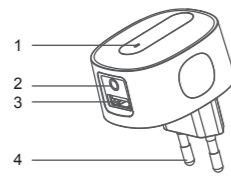


**1. Product Description**

Now you can enjoy both smartphone and tablet music through your home stereo or stand-alone speaker wirelessly, via the Avantree Roxa. Roxa is a simple to use Bluetooth 4.0 home music receiver which incorporates new aptX decoder for less latency, high quality music. Plug Roxa into a wall socket and relax into the music – no need to worry about the Roxa powering off. The extra 1A USB charging port enables you to charge your phone and enjoy music at the same time!

**2. Product Overview**

- (1) LED Indicator
- (2) 3.5 mm audio socket
- (3) 1A USB charging port
- (4) Pin power plug (US / EU / UK Pin optional)



What's in the box:

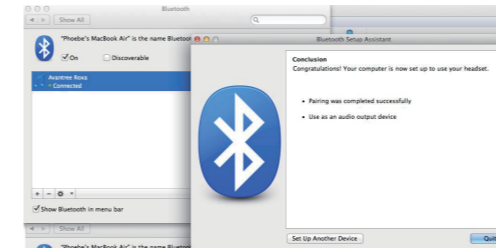
- Avantree Roxa
- 3.5mm to 3.5mm audio cable
- 3.5mm to RCA audio cable
- User manual
- Warranty card

Function	Operation	LED Indicator
Power on	Plug Roxa into standard AC socket	Red LED stays on.
Turn on Bluetooth	Plug 3.5 mm audio cable end into Roxa's 3.5 mm audio socket	Red LED off, and blue LED blinks every 1 second (this lasts for 10 seconds)
Enter pairing mode	Roxa will enter pairing mode automatically when turned on	Blue and red LED lights blink alternately and quickly (this lasts for 2 minutes)
Turn off Bluetooth	Pull the 3.5mm audio cable from Roxa's 3.5 mm audio socket	Blue LED off, red LED stays on

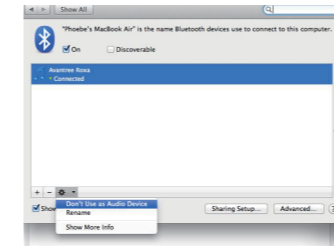
Notes:  
The pairing mode will last 2 minutes. Roxa will enter standby mode automatically if no device can be connected and paired within 2 minutes (if the 3.5 mm cable is still plugged into Roxa's 3.5 mm socket).

**2) Pairing with Bluetooth phone / tablets**  
Please make sure your phone has Bluetooth function and it is available. The pairing procedures are different for different devices. Please refer to your cell phone / tablet / laptop / desktop user manual for further instructions.

**Step 2 – double click Roxa and connect**



**Step 3 – set Roxa as your audio device**



Notes:

- 1) When Roxa is already connected with 2 devices and turned on again, it will connect with these two devices automatically.
- 2) Roxa can only output music from one Bluetooth device. If you want to play music from another Bluetooth device, please pause current device's music first.
- 3) Roxa can only be paired and connected with 1 desktop or laptop a time, due to chipset firmware issues.

**6. Advanced feature – Supply 1A power for other electronics device**

USB port of Roxa can provide DC 5V – 1A for charging other electronic devices. You can charge devices via USB port and stream music at the same time.

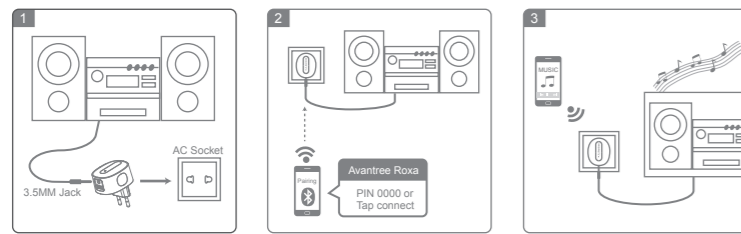


Notes:

- 1) Please use standard USB cable which are compatible with your device.
- 2) The USB port can only provide DC 5V, and the charging current will not exceed 1A.

**3. Setting up your Bluetooth home music receiver**

- (A) The red LED will go on automatically when the device is plugged into a standard AC socket.
- (B) Plug the 3.5 mm audio cable into Roxa's 3.5 mm audio socket, and plug the other end (or 2 x RCA) into the audio input of your home stereo system – Roxa's blue LED will go on. 10 seconds later it will enter into pairing mode – the red and blue LEDs will blink quickly. Pairing mode will last for 2 minutes.
- (C) Paired with Bluetooth phone / tablet / PC or other Bluetooth transmitter.
- (D) After successfully pairing and connect you can enjoy music from your home stereo speaker, and control play-lists via your phone within a 10 meter range.



**4. Pairing with a Bluetooth device (Tutorial online)**

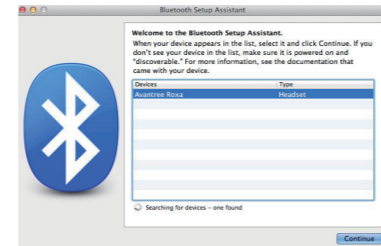
**1) Enter pairing mode**

The general pairing procedures are as follows (taking iPhone as an example):

- (A) Put Roxa and iPhone within 1 meter for pairing.
- (B) Make Roxa into pairing mode (refer to "Enter pairing mode" above)
- (C) From your iPhone home page, tap "settings" "General" "Bluetooth" "On"
- (D) iPhone will auto scan the available Bluetooth devices. Choose "Avantree Roxa" from the list of devices shown, and according to the indication, tap "Connect" or "Yes" or enter password or Pin no. "0000" (for some other Bluetooth devices).
- (E) After pairing successful, complete Blue LED will blink twice every 4 seconds.

**3) Pairing with Mac**

The general pairing procedures please kindly reference below steps:  
Step 1 – search bluetooth device from MacBook



Now you can stream music over to your hi-fi

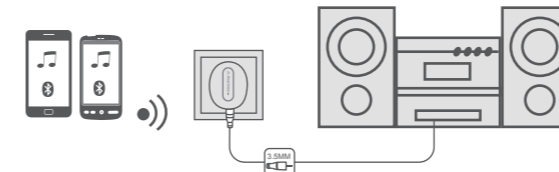
Notes:

- 1) Roxa can remember eight paired devices, when the number of devices exceeds eight, the first one will be replaced.
- 2) If the phone and Roxa over range (normally exceeds 10 meter or above), the Roxa will disconnect and enter standby mode. It will connect automatically if phone and Roxa back to available range within 5 minutes. Or you can select Roxa on the phone.

We find most problems are caused by improper pairing. Please follow the online instructions step-by-step.

**5. Advanced feature – Multipoint for smartphone / tablet**

Roxa can connect with 2 phones or 2 tablets or 1 phone and 1 tablet simultaneously, pls. follow below steps:



- (A) Pair and connect Roxa with device 1 (phone) first.
- (B) Then turn off Bluetooth function on device 1 (phone), and unplug the 3.5 mm audio cable from Roxa, Roxa pair and connect with device 2 (phone). (Details please kindly take reference to 4. Pairing with a Bluetooth device)
- (C) Activate Bluetooth function of device 1 (phone), and operate device 1 (phone) to connect with Roxa.

**6.1 LED indicator**

Status of receiver	LED indicator
Powered on but Bluetooth not activated	Red LED on for long time
Pairing mode	Blue and red LEDs flash alternately and quickly lasts for 2 minutes
Standby mode (no device connected)	Blue LED flashes once every 2 seconds
Standby mode (device connected)	Blue LED flashes twice every 8 seconds
Charging and Bluetooth in standby mode (device connected)	Blue LED flashes twice every 8 seconds
Charging and Bluetooth in standby mode (no device connected)	Blue LED flashes once every 2 seconds

**6.2 F A Qs**

- A) Why can't Roxa be paired with a phone?
  - 1) Please make sure Roxa is in pairing mode.
  - 2) The pairing mode will last 2 minutes, it will enter standby mode automatically if exceeds 2 minutes.
  - 3) Please turn on Roxa's Bluetooth function again to enter pairing mode again.

- B) Why can't Roxa be paired and connect with a laptop?  
Pls. kindly make sure your laptop have Bluetooth function and the bluetooth software support audio profile transmit.
- C) Why can't Roxa automatically connect with the phone after coming back within range?  
If it is out of range, Roxa should connect with the phone automatically. If more than 5 minutes have elapsed, you can connect it by operating your phone.

**7. Product Specification**

- Bluetooth receiver
- Bluetooth V4.0 + EDR
- Support profile: A2DP, AVRCP
- Support decoders: aptX, SBC
- Operation distance: Class 2, 10 Meter
- Audio**
- Output impedance line out: 32Ω
- Total harmonic distortion: 0.6%
- Signal to Noise Ratio: ≥60dB (1KHz,A-WEIGHTED)
- Frequency response: 20 – 20000Hz

- AC power**
- Input voltage: AC100-240V 50/60Hz
- USB output voltage / Current: 5V / 1000mA
- Weight: 45.6g

**9.2. FCC Statement**

This device complies with part 15 of the FCC Rules. Operation is subject to the following two conditions:

- (1) This device may not cause harmful interference, and
- (2) This device must accept any interference received, including interference that may cause undesired operation.

Note: The manufacturer is not responsible for ANY interference, for example RADIO or TV interference, caused by unauthorized modifications to this equipment. Such modifications could void the user's authority to operate the equipment.

**9.3. IC Statement**

This device complies with Industry Canada license-exempt, RSS standard(s). Operation is subject to the following two conditions:

- (1) This device may not cause interference, and
- (2) This device must accept any interference, including interference that may cause undesired operation of the device.

Le présent appareil est conforme aux CNR d'Industrie Canada applicables aux appareils radio exempts de licence. L'exploitation est autorisée aux deux conditions suivantes :

- (1) l'appareil ne doit pas produire de brouillage, et
- (2) l'utilisateur de l'appareil doit accepter tout brouillage radioélectrique subi, même si le brouillage est susceptible d'en compromettre le fonctionnement.

**9.4 FCC RF exposure**

This equipment complies with FCC radiation exposure limits set forth for an uncontrolled environment. This equipment should be installed and operated with minimum distance 20cm between the radiator & your body. This transmitter must not be co-located or operating in conjunction with any other antenna or transmitter.

**9.5. Trademark Statement**

The Bluetooth word mark and logos are owned by the Bluetooth SIG, Inc. Avantree is a trademark owned by Avantronics limited. aptX™ words and logos marked with a ™ or ® are trademarks registered or owned by CSR plc or one of its group companies and may be registered in one or more jurisdictions except that not all such marks are registered in all countries where products are available.

iPhone is the trade mark of Apple inc.

**10. Warranty**

- To avoid any damage or device malfunction, do not drop the device from high places.
- Keep the device away from humidity, water and any other liquid. If the device is exposed to water, moisture and other liquid, do not operate it to avoid any electrical shock, explosion and damage to the device or yourself.
- Do not place or keep this device near any heat source, such as, direct sun light, radiators, stoves or other apparatus which produces heat. It may cause explosion, degrade the performance and/or reduce battery life.
- Do not modify, repair or disassemble the device (Especially battery: It may cause an explosion). Doing so will void the warranty.
- Do not place heavy objects on the device.
- Use only the supplied and approved charger.

- Service must be done by qualified service center or manufacturer.
- Unplug this device when unused for long periods of time or during lightning storms.

CAUTIONS: ELECTRIC SHOCK HAZARD  
The battery used in this device may present a risk of fire or chemical burn if mistreated.



**Bluetooth 4.0 Home Music Receiver ( Roxa )**  
Enjoy outstanding music from home stereo system wirelessly



**User Guide**

**Roxa**

- Size: 45.5\*55.5\*33.5mm

**8. Safety Information**

- To avoid any damage or malfunction of the device, do not drop it from high places.
- Keep device away from humidity, water and any other liquid. If the device is exposed to water, moisture and other liquid, do not operate it to avoid any electrical shock, explosion and damage to the device or yourself.
- Do not place or keep this device near any heat source, such as, direct sun light, radiators, stoves or other apparatus which produces heat. It may cause explosion, degrade the performance and/or reduce battery life.
- Do not modify, repair or disassemble device at discretion (Especially battery: It may cause an explosion). Doing this will avoid the warranty.
- Do not place heavy objects on the device.
- Use only supplied and approved charger.
- Replacement or service must be done by qualified service center or manufacturer.
- Unplug this device when unused for long periods of time or during lightning storms.

CAUTION: ELECTRIC SHOCK HAZARD  
The battery used in this device may present a risk of fire or chemical burn if mistreated.

**9. Declaration of Conformity**

**9.1. EU**  
This product is CE certified according to the provision of the R&TTE Directive (99/5/EC).  
Declare that this product is in compliance with the essential requirements and other relevant provisions of Directive 1999/5/EC.

**Online Tutorial & Technical Support**

For more information about this product and other Avantree Bluetooth products, including the video user guide, product tutorial and online technical support, please refer to [www.avantree.com](http://www.avantree.com) website.

Due to software updates, there could be some changes of operations. Please always refer to Product Tutorial page on Avantree website for the latest features.

Dispose of the packaging and this product in accordance with the latest provisions.



FCC ID: WJ5-BTRC-300  
Z-PKMN-BTRC300-0000