

# **Tag Model T3E User's Manual**

**November 02, 2011**

## Introduction

### Safety and Regulatory Information

FCC ID: UAG-T3E

This device complies with Part 15 of the FCC Rules. Operation is subject to the following two conditions: (1) this Device may not cause harmful interference and (2) this Device must accept any interference received, including Interference that may cause undesired operation.

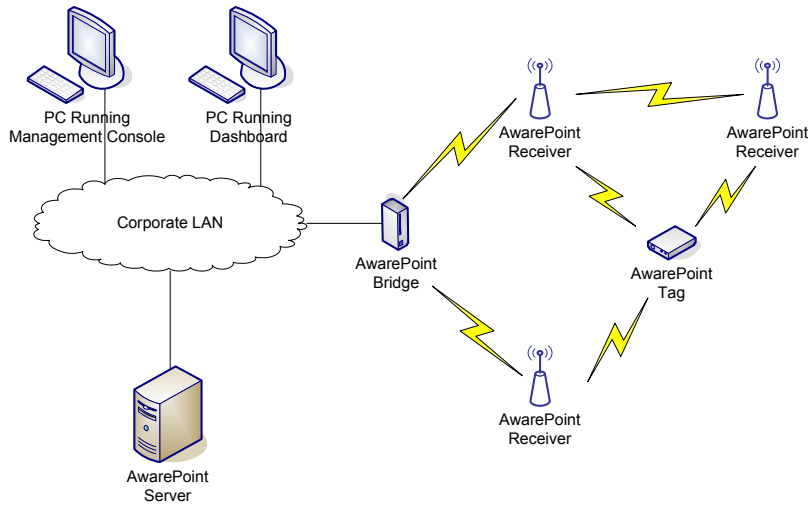
**CAUTION:** Changes or modifications not expressly approved by the party responsible for compliance could void the user's authority to operate the equipment.

### Warnings

- This product is for indoor use only.
- This product is only to be installed by factory trained Awarepoint personnel.
- Do not open the product as there are no user serviceable parts inside and this product is powered at all times.
- Do not use unit if the case is cracked or worn.

### Product Description

The Tag is a wireless device that is located so as to provide environmental information such as the temperature of a refrigeration unit or the humidity of a space. The Tags transmits short messages periodically that include the ID of the device as well as environmental sample data which are received by the Awarepoint sensors. The sensors relay the ID and sample data messages to the bridges via the mesh network created by the plurality of sensors. The bridge communicates with the tags on its wireless link via the sensors. The bridges communicate with the Awarepoint server over an ethernet Interface. Tags, sensors and bridges also periodically check the server for updated configuration information or firmware updates. The tag works with other Awarepoint products as shown in the diagram below.



**Figure 1: Awarepoint Tracking System**

## Product Illustration



**Figure 2: Tag, with temperature probe**

## Installation

### Pre-Installation

Prior to installing the tag, the Awarepoint server, bridges, and sensors must be correctly installed.

### Attaching the tag to an asset

To attach a tag to an asset, you will need to know the asset's type, and optionally manufacturer, model, and serial number.

1. You can use zip ties or double sided tape to attach the tag to the asset.
2. In the system manager, create a new asset type if one does not exist already.
3. In the system manager, create a new asset with the specified manufacturer, model, and unique ID.
4. Drag the tag's MAC address onto the newly created asset.
5. Click Apply