

Tag Model T3X User's Manual

April 18, 2011

Introduction

Safety and Regulatory Information

FCC ID: UAG-T3X

This device complies with Part 15 of the FCC Rules. Operation is subject to the following two conditions: (1) this Device may not cause harmful interference and (2) this Device must accept any interference received, including Interference that may cause undesired operation.

CAUTION: Changes or modifications not expressly approved by the party responsible for compliance could void the user's authority to operate the equipment.

Warnings

- This product is for indoor use only.
- This product is only to be installed by factory trained Awarepoint personnel.
- Do not open the product as there are no user serviceable parts inside and this product is powered at all times.
- Do not use unit if the case is cracked or worn.

Product Description

The Tag is a wireless device that is attached to equipment so that the equipment may be located by the Awarepoint system. The Tags transmits short messages periodically which are received by the Awarepoint sensors. The sensors measures the signal strength of the message transmission carrier and transmits this data (tag ID and signal strength) to the bridge via the mesh network created by the plurality of sensors. The bridge communicates with the tags on its wireless link via the sensors. The bridges communicate with the Awarepoint server over an ethernet Interface. Tags, sensors and bridges also periodically check the server for updated configuration information or firmware updates. The tag works with other Awarepoint products as shown in the diagram below.

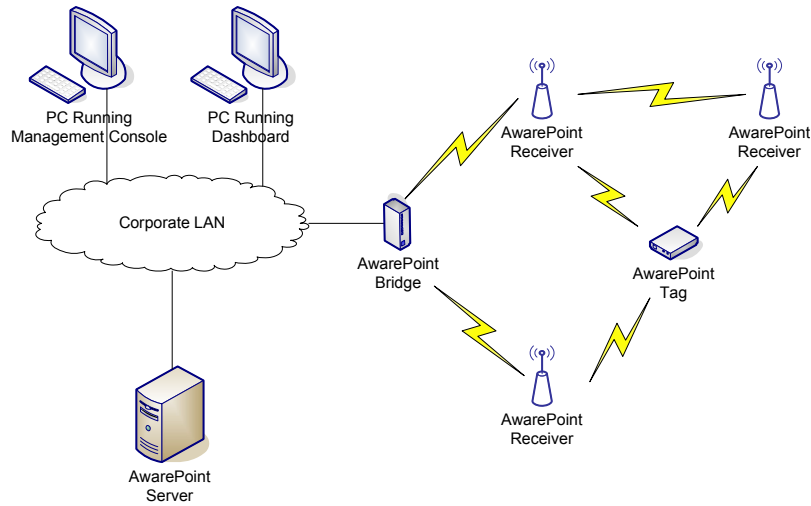


Figure 1: Awarepoint Tracking System

Product Illustration



Figure 2: Tag, with optional strap base

Installation

Pre-Installation

Prior to installing the tag, the Awarepoint server, bridges, and sensors must be correctly installed. In an area that is covered, switch the slider on the tag. This will initialize it to the facility. Next, in the System Manager check that the tag is in the system by viewing the list of tags on the Devices: Tags page.

Attaching the tag to an asset

To attach a tag to an asset, you will need to know the asset's type, and optionally manufacturer, model, and serial number.

1. You can use zip ties or double sided tape to attach the tag to the asset. For zip tie attachment, use the two mounting holes.
2. In the system manager, create a new asset type if one does not exist already.
3. In the system manager, create a new asset with the specified manufacturer, model, and unique ID.
4. Drag the tag's MAC address onto the newly created asset.
5. Click Apply