



User's Manual

MV210 / MV220 / MV230 / MV240



MV200 Series
CDMA 1x EV-DO Rev. A USB Dongle

Please Read this User's Manual Carefully for
Proper and Safe Use of the Product



▪ Copyright

Axisstel Inc. (www.axisstel.com) holds the copyright to this user manual. This user's manual may not be reproduced, distributed or changed in any form without permission from Axisstel Inc.

▪ Registered Trademark

The registered trademarks appearing in this user manual are owned by their respective companies.

▪ Confidential & Proprietary

This user manual is the intellectual property of Axisstel Inc. and its technical material cannot be copied or used without the permission of Axisstel Inc.



Table of Contents

SAFETY NOTICE	4	Templates	16
PRODUCT INTRODUCTION.....	5	Sending SMS.....	16
PRODUCT FEATURES	5	SETTINGS	17
PRODUCT COMPONENTS	6	Internet	17
NAMES OF PARTS	7	Modem.....	18
INSTALLING THE PROGRAM	8	SMS.....	18
DELETING THE PROGRAM	9	ETC	18
INITIAL SETUP	10	MEMO	19
When Using UIM (SIM) Card	10		
When Not Using UIM (SIM) Card	10		
USING INTERNET	13		
USING SMS	14		
InBox	15		
SimInBox.....	15		
SavedBox.....	15		
OutBox	16		
DraftBox	16		



Safety Notice

This safety notice is to help protect the user's safety and prevent any property damage or inconvenience due to accidents. Please use the product properly after thoroughly understanding the following notice.

Please read this manual's notice carefully in order to use the product safely and properly.

Caution

- Do not disassemble, rebuild or repair the device through one's own discretion.
- Do not use the device in areas where the use of mobile phones is prohibited.
- When in hospitals and medical centers, use the device according to rules and regulations.
- Do not use the device on airplanes.
- Keep the device out of the reach of children.
- Do not touch or use the device with wet hands.
- Do not use the device outdoors in weather with thunder and lightning.

Notice

- Be careful because the device could be damaged or altered if it struck or thrown (and dropped).
- If the device malfunctions, be sure to take it to the specified service center.
- Keep the device and PC's USB ports clean.
- Do not use or store with magnetic storage media.
- Do not use or store in extremely hot or cold places or places with extreme temperature changes.
- If the modem is disconnected from the PC while it is on, data could be lost. Shut down all programs and disconnect the modem after the power LED is turned off.
- When running a notebook computer on its battery, the device will use additional power, causing the notebook battery to be consumed somewhat faster.
- When using the modem with a desktop PC, maintain at least 50 cm distance from the wall.



Product Introduction

Thank you for purchasing the Axesstel MV200 Series. The MV200 Series is a CDMA 1x EV-DO Rev. A type USB Data Modem that can freely use wireless internet anytime and anywhere.

This model supports various frequencies according to the model names shown below, and each model has optional USIM support.

- MV210: Supports 450 MHz
- MV220: Supports 800 MHz
- MV230: Supports 1900 MHz
- MV240: Supports 800/1900 MHz



Product Features

General Features

- USIM Support (optional)
- Internet
- Short Message Service (SMS)
- Auto Installation (WHQL certified)
- Operating Temperature: -20 °C ~ +50 °C
- Storage Temperature: -30 °C ~ +80 °C
- Humidity: 5 ~ 95 %

Technical Features

- Internal Type Antenna (Intenna)
- Uses PC power (No Battery / Charges from the USB port)
- Backwards compatible with IS-95 A/B, CDMA2000 EV-DO Rev. A and 1x.
- IS-2000 data rates up to 153.6kbps in forward and reverse CH.
- IS-856 data rates up to 3.1Mbps forward and 1.8Mbps reverse channel
- USB 1.1 interface
- Software interface: IS-707 AT Command set & Qualcomm Extended AT command + Axesstel extended AT Command set
- Max power consumption: < 500mA (24dBm, USB Port Power)
- Standby Output Power: < -61dBm



Data Rate

- Under EVDO Rev. A network
- Downloads: Up to 3.1 Mbps
 - Uploads: Up to 1.8 Mbps

** Note: The data speeds shown above may vary according to the operator's network status.*

Mechanical Features

- LEDs: RSSI and Power indication
- Dimension: 35mm(W) x 92mm(H) x 9.6mm(D)

FCC Compliance Information

This device complies with Part 15 of FCC Rules.

Operation is subject to the following two conditions:

- (1) This device may not cause harmful interference, and
- (2) This device must accept any interference received.

Including interference that may cause undesired operation

Product Components

The MV200 Series product components are as follows.

	Quick installation	USB Extension
MV200 Device	Guide	Cable (optional)



** Note: The pictures in this user manual are only used to demonstrate the modem's functions, so they may be different from what you see on your modem. Please refer to your modem if there are any differences.*



System Requirements

- OS: Microsoft Windows 2000, XP and Vista
(Driver support only; selected Linux versions and MAC Tiger 10.4 & Leopard 10.5)

(1) Recommended Specifications

- CPU: Pentium III 550Mhz or higher
- RAM: 256MB or more
- VGA: Video card with 1024 | 768 resolution and 65536 or more colors
- HDD: 200MB or more hard disk space
- Others: CD-ROM Drive or DVD Drive

(2) Minimum Specifications

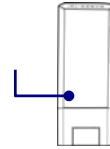
- CPU: Pentium II 300Mhz or higher
- RAM: 128MB or more
- VGA: Video card with 1024 | 768 resolution and 65536 or more colors
- HDD: 100MB or more hard disk space
- Others: CD-ROM Drive or DVD Drive

Names of Parts

Front View

Power LED

RSSI LED

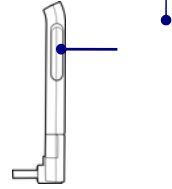


Side View

RF Cable Port

USIM Port

USB Port





LED Operation

The MV200 Series has 2 LEDs, and the LEDs indicate the status of the device as follows.

LED	Color	Description
Power	None	No power supplied
	Red	Power supplied
Data (RSSI)	None	No Signal
Data (RSSI)	Red	Weak signal
	Purple	Medium Signal
	Blue	Good Signal

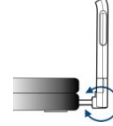
Installing the Program

When first installing the modem on your PC, disable any firewalls in order to install it without problems.

1. Connect the USB dongle to the PC.



** Note: Adjust the MV200 Series' USB port angle of rotation as shown in the picture so that is appropriate for the user environment.*





2. When the device is recognized by the PC, the program will automatically begin installation.



**Note: Depending on your PC's status and specifications, 2 or 3 minutes will be needed to install the program.*

3. When the installation completes successfully, AxessManager will run automatically as shown below.

Modem Connect/Disconnect
Setting
SMS
Internet Connect/Disconnect

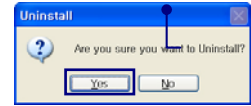
Deleting the Program

The method for deleting the AxessManager program from the PC is as follows.

1. On the taskbar, click [Start] - [Program] - [Axesstel] - [AxessManager MV200] - [Uninstall].



2. When the window appears asking if you want to uninstall, click Yes and the program will be deleted.

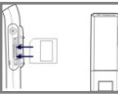




Initial Setup

The initial setup for the product after purchase is as follows. MV200 supports both UIM and Non UIM types.

When Using UIM (SIM) Card

1. Insert properly activated UIM card provided by the company into the UIM port.

2. Connect the USB dongle to the PC.
If you insert a UIM card with a PIN lock set, the Verify PIN window will appear and you must enter the password.

**.Note: After normally entering the PIN password, you can use the internet with AxessManager without any other*

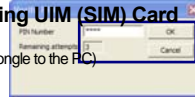
problems. You can enter the PIN up to 3 times, and if you forget the PIN, contact the place of purchase.

3. AxessManager will be popped up
4. After this, follow the below **When Not Using UIM (SIM) Card** section's instruction and complete the initial settings.

When Not Using UIM (SIM) Card

(Connect the USB dongle to the PC)

1. In the AxessManager window, click [Setting].





2. In the Options window, click [New].



- New: Register a new internet service provider.
- Delete: Delete a registered internet service provider.
- Properties: View or modify a registered internet service provider's info.
- Modem: Set the current location info for modem connections.

3. In the New window, enter the internet settings and click [Save].

- Connect Name: Enter the name of the service provider which will appear in the options window.
- Phone: Enter the phone number for modem access. (The default is "#777")

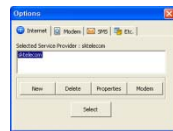
NOTE: The default number is set #777 but depending on the country and the network operator, the set number may be different, so register the product and set it to the number set by the network operator you are using.


- User Name: Enter the User ID used by the network operator if needed.
- Password: Enter the password for internet connections.
- Remember Password: Set the password to be saved and automatically entered when connecting to the internet.





4. Select a network operator registered in the Selected Service Provider list and click the [Select] button.



5. Click the  button to close the Options window. Now the basic settings for connecting to the internet are complete.

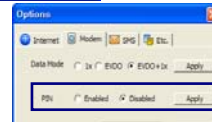
Setting the PIN

You can choose whether to use a PIN password through the following method.

In the Modern tab, go to the PIN section and click Disabled and then click the [Apply] button.

Changing the PIN

Enter the Old Pin and the new PIN that you want, then re-enter the new PIN in the Verify field and click the [Apply] button.





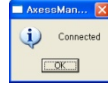
Using Internet

▪ Connecting to the Internet

1. In the AccessManager window, click the [Connect to Internet] icon.



2. As shown below, the program will attempt to connect to the internet and if successful, a notification window will appear. Click [OK].



3. When connected to the internet, the [Connect to Internet] icon will turn blue and the connection time and sent/received data will be displayed.



Note: After connecting to the Internet, web browsers and other such programs can be used the same as when connected through a wired connection.






Disconnecting from the Internet

1. In the Axess-Manager window, click [Disconnect to Internet].
2. As shown below, the connection will be ended and a notification window will appear. Click the [OK] button.
3. When disconnected from the internet, the [Connect to Internet] icon turns purple and the connection time and sent/received data all appear as '0'.

Using SMS

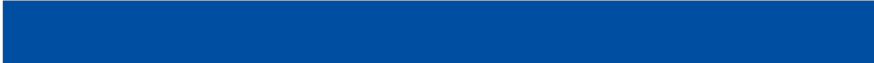
Modem Connect

The method for connecting to the internet is as follows.

1. In the AxessManager window, click the Modem Connect button ().



2. The SMS Icon will become activated.





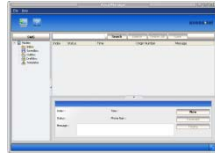
▪ Running the SMS Manager

The method for running the SMS manager is as follows.

1. Click the SMS icon.



2. As shown below, the SMS Manager window appears, which can send or receive SMS messages.



▪ Using the SMS Manager

InBox

In the InBox, you can reply to received messages, send messages and delete messages.



SimInBox

When using an USIM card, all messages are saved on the USIM card, and you can check the received and replied messages in the SimInBox.



SavedBox

In the SavedBox, you can reply to received messages, send messages and delete messages.





OutBox

In the OutBox, you can check messages that have been sent. Also, you can select messages and forward or delete them.



DraftBox

In the DraftBox you can check messages that have not been sent but have been saved. Also, you can select messages and forward or delete them.



Templates

You can enter often-used messages in the Templates section.



Sending SMS

The method for sending SMS messages with the SMS Manager is as follows.

1. In the Message Box, click the [New] button.
2. Enter the receiving number for the SMS and enter the message.



* *Note: You can send a maximum of 10 messages at once with the SMS Manager.*


3. If you check the 'Deliver Report' item and click the [Send] button to send the message, a window will appear with the results.





▪ Disconnecting the Modem

The method for disconnecting the modem is as follows.

1. In the AxessManager window, click the Modem Connect () button.



2. The SMS icon will become deactivated and the modem connection will terminate.



Settings

You can change the settings for using the modem and the internet. While using the modem, click the Setting icon.



Internet

Manage the settings for connecting to the internet in the Internet tab.





Modem

You can set the Data Mode and the user password in the Modem tab.



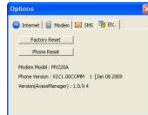
SMS

In the SMS tab, you can choose whether to Auto Erase messages for when the internal memory space is too low.



ETC.

In the ETC. tab, you can reset the device and check the model name and SW version.





Memo

Safety Information

1 . SAFETY INFORMATION FOR FIXED WIRELESS TERMINALS

.POTENTIALLY EXPLOSIVE ATMOSPHERES

Turn your phone OFF when in any area with a potentially explosive atmosphere and obey all signs and instructions. Sparks in such areas could cause an explosion or fire resulting in bodily injury or even death.

INTERFERENCE TO MEDICAL DEVICES

Certain electronic equipment may be shielded against RF signal from your wireless phone. (pacemakers, Hearing Aids, and so on) Turn your phone OFF in health care facilities when any regulations posted in these areas instruct you to do so. RF signals may affect improperly installed or inadequately shielded electronic system in motor vehicles.

.EXPOSURE TO RF ENERGY

Use only the supplied or an approved replacement antenna. Do not touch the antenna unnecessarily when the phone is in use. Do not move the antenna close to, or touching any exposed part of the body when making a call.

SAFETY INFORMATION FOR RF EXPOSURE

Body worn operation

This device was tested in multiple notebook computer configurations with USB port configurations for typical near-body operations with the back of the USB Modem kept 5 mm from body. To maintain compliance with FCC RF exposure requirements it can be used in notebook computers with substantially similar physical dimensions, construction, and electrical and RF characteristics, and that maintain a minimum 5 mm separation distance between the user's body and the back of the USB Modem, including the antenna. The antenna(s) used for this USB Modem must not be co-located or must not operate in conjunction with any other antenna or transmitter within a host device.

SAR INFORMATION

THIS MODEL PHONE MEETS THE GOVERNMENT'S REQUIREMENTS FOR EXPOSURE TO RADIO WAVES.

Your wireless phone is a radio transmitter and receiver. It is designed and manufactured not to exceed the emission limits for exposure to radiofrequency (RF) energy set by the Federal Communications Commission of the U.S. Government. These limits are part of comprehensive guidelines and establish permitted levels of RF energy for the general population. The guidelines are based on standards that were developed by independent scientific organizations through periodic and thorough evaluation of scientific studies. The standards include a substantial safety margin designed to assure the safety of all persons, regardless of age and health. The exposure standard for wireless mobile phones employs a unit of measurement known as the Specific Absorption Rate, or SAR. The SAR limit set by the FCC is 1.6 W/kg. *

Tests for SAR are conducted with the phone transmitting at its highest certified power level in all tested frequency bands. Although the SAR is determined at the highest certified power level, the actual SAR level of the phone while operating can be well below the maximum value. This is because the phone is designed to operate at multiple power levels so as to use only the power required to reach the network. In general, the closer you are to a wireless base station antenna, the lower the power output. Before a phone model is available for sale to the public, it must be tested and certified to the FCC that it does not exceed the limit established by the government adopted requirement for safe exposure. The tests are performed in positions and locations (e.g., at the ear and worn on the body) as required by the FCC for each model. The highest SAR value for this model phone when tested for use at the body is **1.11 W/Kg**. (Body-worn measurements differ among phone models, depending upon available accessories and FCC requirements). While there may be differences between the SAR levels of various phones and at various positions, they all meet the government requirement for safe exposure. The FCC has granted an Equipment Authorization for this model phone with all reported SAR levels evaluated as in compliance with the FCC RF exposure guidelines. SAR information on this model phone is on file with the FCC and can be found under the Display Grant section of <http://www.fcc.gov/oet/fccid> after searching on **FCC ID: PH7MV240**.

Additional information on Specific Absorption Rates (SAR) can be found on the Cellular Telecommunications Industry Association (CTIA) web-site at <http://www.wow-com.com>. * In the United States and Canada, the SAR limit for mobile phones used by the public is 1.6 watts/kg (W/kg) averaged over one gram of tissue. The standard incorporates a substantial margin of safety to give additional protection for the public and to account for any variations in measurements.

U.S.A.

U.S.FEDERAL COMMUNICATIONS COMMISSION
RADIO FREQUENCY INTERFERENCE STATEMENT

INFORMATION TO THE USER

NOTE : This equipment has been tested and found to comply with the limits for a Class B digital device pursuant to Part 15 of the FCC Rules. These limits are designed to provide reasonable protection against harmful Interference in a residential installation This equipment generates, uses, and can radiate radio frequency energy and, if Not installed and used in accordance with the instructions, may cause harmful Interference to radio communications. However, there is no guarantee that interference will not occur in a particular Installation. If this equipment does cause harmful interference to radio or television reception, which can be determined by turning the equipment off and on, the user is encouraged to try to correct the interference by one or more of the following measures:

- *- Reorient or relocate the receiving antenna.
- . Increase the separation between the equipment and receiver.
- *- Connect the equipment into an outlet of a circuit different from that to which the receiver is connected.
- *- Consult the dealer or an experienced radio/TV technician for assistance.

Changes or modification not expressly approved by the party responsible for Compliance could void the user's authority to operate the equipment. Connecting of peripherals requires the use of grounded shielded signal cables.

