

# AXIS 210/211 Network Camera

## User's Manual

## About this Document

This manual is intended for administrators and users of the AXIS 210/211 Network Camera, and is applicable for software release 4.20. It includes instructions for using and managing the AXIS 210/211 on your network. Previous experience of networking will be of use when using this product. Some knowledge of UNIX or Linux-based systems may also be beneficial, for developing shell scripts and applications. Later versions of this document will be posted to the Axis Website, as required. See also the product's online help, available via the Web-based interface.

## Intellectual Property Rights

Axis AB has intellectual property rights relating to technology embodied in the product described in this document. In particular, and without limitation, these intellectual property rights may include one or more of the patents listed at <http://www.axis.com/patent.htm> and one or more additional patents or pending patent applications in the US and other countries.

This product contains licensed third-party software. See the menu item "About" in the product's user interface for more information.

This product contains source code copyright Apple Computer, Inc., under the terms of Apple Public Source License 2.0 (see <http://www.opensource.apple.com/apsl/>). The source code is available from:  
<http://developer.apple.com/darwin/projects/rendezvous/>

## Legal Considerations


Video and audio surveillance can be prohibited by laws that vary from country to country. Check the laws in your local region before using this product for surveillance purposes. This product includes one (1) MPEG-4 decoder license. To purchase further licenses, contact your reseller.

## Electromagnetic Compatibility (EMC)

This equipment generates, uses and can radiate radio frequency energy and, if not installed and used in accordance with the instructions, may cause harmful interference to radio communications. However, there is no guarantee that interference will not occur in a particular installation.

If this equipment does cause harmful interference to radio or television reception, which can be determined by turning the equipment off and on, the user is encouraged to try to correct the interference by one or more of the following measures: Re-orient or relocate the receiving antenna. Increase the separation between the equipment and receiver. Connect the equipment to an outlet on a different circuit to the receiver. Consult your dealer or an experienced radio/TV technician for help. Shielded (STP) network cables must be used with this unit to ensure compliance with EMC standards. If the I/O terminal connector is used, a ferrite core (available e.g. from Axis) should be fitted around the wires in order to ensure compliance with EMC standards.

**USA** - This equipment has been tested and found to comply with the limits for a Class B computing device pursuant to Subpart B of Part 15 of FCC rules, which are designed to provide reasonable protection against such interference when operated in a commercial environment. Operation of this equipment in a residential area is likely to cause interference, in which case the user at his/her own expense will be required to take whatever measures may be required to correct the interference.

**Europe** -  This digital equipment fulfills the requirements for radiated emission according to limit B of EN55022/1998, and the requirements for immunity according to EN55024/1998 residential, commercial, and light industry.

**Japan** - This is a class B product based on the standard of

the Voluntary Control Council for Interference from Information Technology Equipment (VCCI). If this is used near a radio or television receiver in a domestic environment, it may cause radio interference. Install and use the equipment according to the instruction manual.

**Australia** - This electronic device meets the requirements of the Radio Communications (Electromagnetic Compatibility) Standard 1998 AS/NZS 3548.

## Liability

Every care has been taken in the preparation of this manual. Please inform your local Axis office of any inaccuracies or omissions. Axis Communications AB cannot be held responsible for any technical or typographical errors and reserves the right to make changes to the product and manuals without prior notice. Axis Communications AB makes no warranty of any kind with regard to the material contained within this document, including, but not limited to, the implied warranties of merchantability and fitness for a particular purpose. Axis Communications AB shall not be liable nor responsible for incidental or consequential damages in connection with the furnishing, performance or use of this material.

## Trademark Acknowledgments

Boa, Ethernet, Internet Explorer, Linux, Microsoft, Mozilla, Netscape Navigator, OS/2, UNIX, Windows, WWW are registered trademarks of the respective holders. Java and all Java-based trademarks and logos are trademarks or registered trademarks of Sun Microsystems, Inc. in the United States and other countries. Axis Communications AB is independent of Sun Microsystems Inc. UPnP™ is a certification mark of the UPnP™ Implementers Corporation.

## Support

Should you require any technical assistance, please contact your Axis reseller. If your questions cannot be answered immediately, your reseller will forward your queries through the appropriate channels to ensure a rapid response. If you are connected to the Internet, you can:

- download user documentation and firmware updates
- find answers to resolved problems in the FAQ database. Search by product, category, or phrases
- report problems to Axis support by logging in to your private support area
- visit Axis Support at [www.axis.com/techsup/](http://www.axis.com/techsup/)

## Safety Notice - Battery Replacement

The AXIS 210/211 uses a 3.0V CR2032 Lithium battery as the power supply for its internal real-time clock (RTC). Under normal conditions this battery will last for a minimum of 5 years. Low battery power affects the operation of the RTC, causing it to reset at every power-up. A log message will appear when the battery needs replacing.

The battery should not be replaced unless required!

If the battery does need replacing, please observe the following:

- Danger of Explosion if battery is incorrectly replaced
- Replace only with the same or equivalent battery, as recommended by the manufacturer.
- Dispose of used batteries according to the manufacturer's instructions.

AXIS 210/211 User's Manual

Revision 3.0

Part No: 23621

March 2005

Copyright© Axis Communications AB, 2004-2005

# Contents

---

Product Features . . . . .	5
AXIS 211 - Extra Features . . . . .	6
Overview . . . . .	7
Accessing the Camera . . . . .	9
Access From a Browser . . . . .	9
Setting the Password . . . . .	10
Accessing the cameras from the Internet. . . . .	10
Focusing . . . . .	11
The Live View Page. . . . .	12
Video Streams . . . . .	14
Stream Types. . . . .	14
MPEG-4 protocols and communication methods . . . . .	15
How to stream MPEG-4? . . . . .	15
The AXIS Media Control . . . . .	16
Other methods of accessing the video stream. . . . .	16
Configuration . . . . .	18
Accessing the Setup tools . . . . .	18
Overview of the Setup tools . . . . .	19
Video and Image settings. . . . .	21
AXIS Media Control . . . . .	24
Live View Config . . . . .	25
Layout . . . . .	25
HTML Examples. . . . .	28
External Video. . . . .	29
Sequence Mode . . . . .	29
Event Configuration . . . . .	30
Event Servers. . . . .	30
Configuring Event Types . . . . .	31
Motion Detection . . . . .	33
Port Status . . . . .	34
System Options . . . . .	35
Security . . . . .	35
Date & Time . . . . .	36
Network - Basic TCP/IP Settings . . . . .	36
Network - Advanced TCP/IP Settings . . . . .	37
SOCKS . . . . .	38

SMTP (email) .....	38
UPnP™ .....	39
RTP (multicast) MPEG-4 .....	39
Ports & Devices .....	39
LED Settings .....	39
Maintenance .....	39
Support .....	40
Advanced .....	41
The I/O Terminal Connector .....	42
Troubleshooting .....	44
Technical Specifications .....	49
General performance considerations .....	51
Optimizing your system .....	51
Frame rates - Motion JPEG and MPEG-4 .....	52
Bandwidth .....	52
Glossary of Terms .....	54
Index .....	56

## Product Features

---

The AXIS 210 and the AXIS 211 are part of the latest generation of fully featured Axis Network Cameras, all based on the AXIS ARTPEC-2 compression chip. The AXIS 211 features a DC-Iris and support for Power over Ethernet (PoE). All instructions and information in this manual are valid for both cameras unless otherwise stated.

The video streams from the cameras are made available on the network as real-time, full frame rate Motion JPEG and/or MPEG-4 video streams. The cameras include **Video Motion Detection**, which can be used to trigger e.g. image uploads when there is activity in the video image. Uploads can also be scheduled to run at specified times. Security features include IP address filtering and multilevel password protection.

The cameras are equipped with an alarm input and an output, which can be connected to various external devices, e.g. door sensors and alarm bells.



Video can be viewed in various different resolutions. Up to 20 viewers can access a camera simultaneously when using Motion JPEG. If MPEG-4 multicast is used, the number of viewers is unlimited, but each viewer still needs a separate MPEG-4 decoder license. There is one license included in the product, and additional licenses can be purchased separately.

The cameras have their own built-in web server, providing full access to all features through the use of a standard web browser. The built-in scripting tool allows the creation of basic applications. For advanced functionality, the cameras can be accessed via the AXIS HTTP API (more info at [www.axis.com/developer](http://www.axis.com/developer)).

## AXIS 211 - Extra Features

### DC-Iris

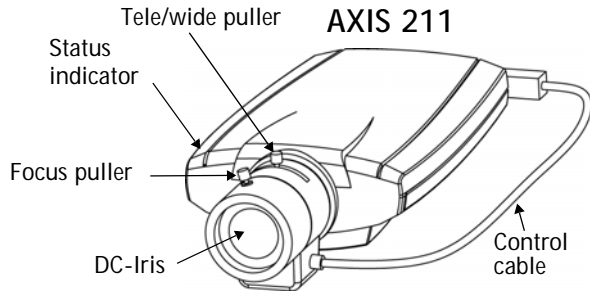
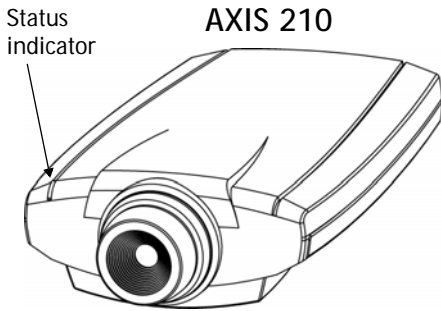
The AXIS 211 features a varifocal DC-Iris, which automatically regulates the amount of light entering the camera. Tele/wide and focus are adjusted manually with the aid of the pullers mounted on the lens.



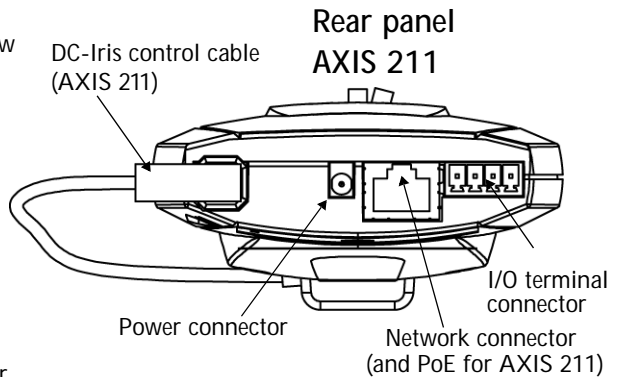
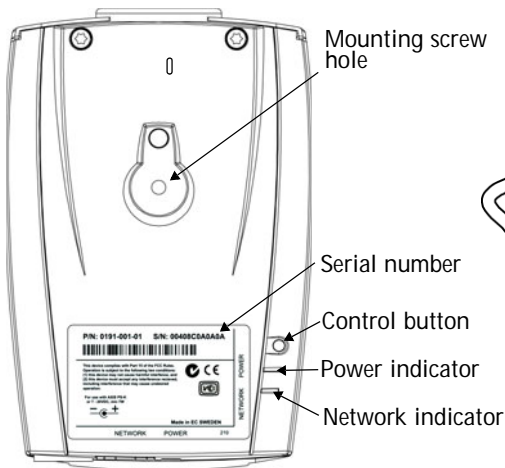
### Power over Ethernet (PoE)

Supporting PoE network transformers conforming to IEEE 802.3af, the AXIS 211 can be powered directly from the network cabling.

## Overview



### Underside



**Power Connector** - For connection of the PS-K power adapter (included).

**I/O Connector** - The I/O terminal connector provides the physical interface to one transistor output, one digital input and an auxiliary connection point for DC power. For more information, see *The I/O Terminal Connector*, on page 42.

**Network Connector** - The camera connects to the network via a standard network connector. Supporting NWAY, the camera detects the speed of the local network segment (10BaseT/100BaseTX Ethernet). This socket can also be used to power the AXIS 211 via PoE (Power over Ethernet).

**Serial Number** - This number is used during installation.

**Control Button** - Press this button to install using the AXIS Internet Dynamic DNS Service (see page 11) or to restore the factory default settings, as described in *Resetting to the Factory Default Settings*, on page 41.

## LED Indicators

After completion of the startup and self test routines, the multi-colored Network, Status, and Power LED indicators flash as follows:

Network	Amber	Steady for connection to 10 Mbit/s network. Flashes for network activity.
	Green	Steady for connection to 100 Mbit/s network. Flashes for network activity.
	Red	Flashes rapid red, together with the Status indicator, for hardware error.
	Unlit	No connection.
Status	Green	Shows steady green for normal operation. Can be configured to flash green at intervals whenever the camera is accessed. See the online help for more information.
	Unlit	When configured for "no flash" on camera access.
	Amber	Shows steady amber during reset to factory default or when restoring settings.
	Red	Slow flash for failed upgrade (see <i>Emergency Recovery Procedure, on page 45</i> ). Rapid flash, together with the Network indicator, for hardware error.
Power	Green	Normal operation.
	Amber	Flashes green/amber during firmware upgrade.



## Accessing the Camera

To use the AXIS 210/211 on your network, it must first be installed. Please see the AXIS 210/211 Installation Guide, supplied with the product, or available from [www.axis.com](http://www.axis.com)

The cameras can be used with most standard operating systems and browsers. The recommended browser is Internet Explorer with Windows, and Mozilla with other operating systems. See also the *Technical Specifications*, on page 49.

- Notes:**
- To view streaming video in Microsoft Internet Explorer, you must set your browser to allow ActiveX controls and allow the AXIS Media Control (AMC) to be installed on your workstation. AMC is required to view MPEG-4 video streams. If your workstation restricts the use of additional software components, the cameras can be configured to use a Java applet for updating JPEG images. Please see the online help for more information.
  - The AXIS 210/211 includes one (1) decoder license for viewing MPEG-4 video streams. This is automatically installed with AMC. The administrator can disable the installation of the MPEG-4 decoder, to prevent unlicensed copies being installed.

### Access From a Browser

1. Start a browser (e.g. Internet Explorer, Mozilla)
2. Enter the IP address or host name of the cameras in the Location/Address field of your browser.
3. If this is the first time the camera is accessed, see *Setting the Password*, on page 10. Otherwise enter your user name and password, as set by the administrator.



4. The camera's Live View page is now displayed in your browser.

**Note:** If the layout of the Live View page has been customized to meet specific requirements, some of the examples and functions featured here may differ from those displayed on your own Live View page.

## Setting the Password

1. When accessing a camera for the first time, the 'Configure Root Password' dialog will be displayed on the screen.
2. Enter a password and then re-enter it, to confirm the spelling. Click OK.
3. The 'Enter Network Password' dialog will appear. Enter the User name: root  
Note: The default administrator user name root is permanent and cannot be deleted.
4. Enter the password as set in step 2 above, and click OK. If the password is lost, the cameras must be reset to the factory default settings. See page 41.
5. If required, click Yes to install the AXIS Media Control (AMC). You will need administrator rights on the computer to do this.



AXIS  
COMMUNICATIONS

### Configure Root Password

User name: root

Password: \*\*\*\*

Confirm password: \*\*\*\*

OK

## Accessing the cameras from the Internet

Once installed, a camera is accessible on your local network (LAN). To access the camera from the Internet you must configure your broadband router to allow incoming data traffic. For security reasons this is usually done on a specific port. Please refer to the documentation for your broadband router for further instructions.

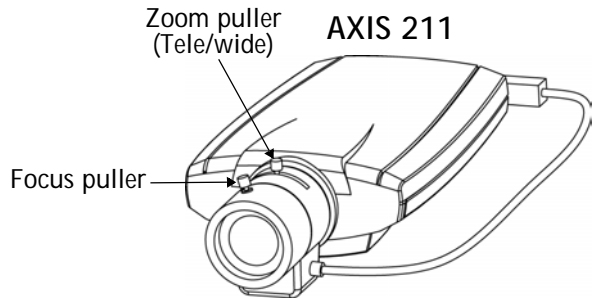
For more information, please visit the AXIS Internet Dynamic DNS Service at [www.axiscam.net](http://www.axiscam.net) or, for Technical notes on this and other topics, visit the Axis Support Web at [www.axis.com/techsup](http://www.axis.com/techsup)

## Focusing

To focus the **AXIS 210**, simply turn the adjustment ring on the lens until the focus is satisfactory.

To focus the **AXIS 211**, follow the instructions below.

1. From the Basic Configuration page in the setup tools, open the Focus adjustment page.
2. Set the DC-Iris to *Disabled* and click **Save**.
3. Unscrew the zoom puller on the lens by turning it anti-clockwise. Adjust the zoom setting as required. Re-tighten the zoom puller.
4. Unscrew the focus puller on the lens. Adjust the focus as required. Re-tighten the focus puller.
5. From the Focus adjustment page, set the DC-Iris to *Enabled* and click **Save**.



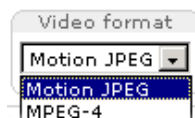
**Note:** The DC-Iris should always be disabled while focusing the camera. This opens the iris to its maximum, which gives the smallest depth of field and thus the best conditions for correct focusing. When the focus is set with this method it will then be maintained in any light conditions.

## The Live View Page

Depending on whether or not the Live View page has been customized, the buttons described below may or may not be visible.



To resize the video image, click the **View Size** buttons: half-size ( $x^{1/2}$ ), full-size ( $x1$ ),  $x2$  or  $x4$ . Note that this does not change the video image's resolution, but simply how it is displayed. Changing the **View size** is not available in Sequence Mode.



The **Video Format** drop-down list allows the video format on the Live View page to be temporarily changed.



The **Output** buttons control the output directly from the Live View page. These buttons are configured under **Setup > Live View Config > Layout**.



**Pulse** - click this button to activate the port for a defined period of time, e.g. to switch on a light for 20 seconds.

**Active/Inactive** - click these buttons to manually start and stop a connected device, e.g. switch a light on/off.



These buttons start and stop the **Sequence Mode**. This mode is created in **Setup > Live View Config > Sequence mode**, and automatically displays the view from 2 or more video sources at set intervals.



From the **Source** list, select the desired external video source. Note that Sequence Mode must be stopped before selecting a source from this list.






The **Action** buttons can trigger an event directly from the Live View page. These are configured under **Setup > Live View Config > Layout**.



The **Snapshot** button saves a snapshot of the video image currently being displayed. Right-click on the video image to save it in JPEG format on your computer. This button is primarily intended for use when the AMC viewer toolbar is not available.

The **AMC viewer toolbar** (AXIS Media Control) is available in **Microsoft Internet Explorer only**. It displays the following buttons:

-  The **Play/Stop** button starts and stops the live video stream.
  
-  The **Snapshot** button saves a snapshot of the video image currently being displayed. The Snapshot function and the target directory for saving snapshots can be configured from the AMC Control Applet in the Windows Control Panel (Internet Explorer only).
  
-  Click the **View Full Screen** button to make the video image fill the entire screen area. No other windows will be visible. Press Esc (Escape) on the computer keyboard to exit full screen.

## Video Streams

---

The AXIS 210/211 provides several different image and video stream formats. The type to use depends on your requirements and on the properties of your network.

The Live View page in the AXIS 210/211 provides access to Motion JPEG and MPEG-4 video streams, as well as to single JPEG images. Other applications and clients can also access these video streams/images directly, without going via the Live View page.

### Stream Types

#### Motion JPEG

This format uses standard JPEG still images for the video stream. These images are then displayed and updated at a rate sufficient to create a stream that shows constantly updated motion.

The Motion JPEG stream uses considerable amounts of bandwidth, but also provides excellent image quality and access to each and every individual image contained in the stream.

Note also that multiple clients accessing Motion JPEG streams can use different image settings.

#### MPEG-4

This is a video compression standard that makes good use of bandwidth, and which can provide high-quality video streams at less than 1 Mbit/s.

- Notes:**
- MPEG-4 is licensed technology. The AXIS 210/211 includes one viewing client license. Installing additional unlicensed copies of the viewing client is prohibited. To purchase additional licenses, contact your Axis reseller.
  - All clients viewing the MPEG-4 stream must use the same image settings.

The MPEG-4 standard provides scope for a large range of different coding tools for use by various applications in different situations, and the AXIS 210/211 provides certain subsets of these tools. These are represented as **Video object types**, which are selected for use with different viewing clients. The supported video object types are:

- **Simple** - sets the coding type to H.263, as used by e.g. QuickTime™.
- **Advanced Simple** - sets the coding type to MPEG-4 Part 2, as used by AMC (AXIS Media Control)

When using MPEG-4 it is also possible to control the bit rate, which in turn allows the amount of bandwidth usage to be controlled. CBR (constant bit rate) is used to achieve a specific bit rate by varying the quality of the MPEG-4 stream. When using VBR (variable bit rate), the quality of the video stream is kept as constant as possible, at the cost of a varying bit rate.

## MPEG-4 protocols and communication methods

To deliver live streaming video over IP networks, various combinations of transport protocols and broadcast methods are employed.

- RTP (Realtime Transport Protocol) is a protocol that allows programs to manage the real-time transmission of multimedia data, via unicast or multicast.
- RTSP (Real Time Streaming Protocol) serves as a control protocol, to negotiate which transport protocol to use for the stream. RTSP is thus used by a viewing client to start a unicast session, see below.
- UDP (User Datagram Protocol) is a communications protocol that offers limited service for exchanging data in a network that uses the Internet Protocol (IP). UDP is an alternative to the Transmission Control Protocol (TCP). The advantage of UDP is that it is not required to deliver all data and may drop network packets when there is e.g. network congestion. This is suitable for live video, as there is no point in re-transmitting old information that will not be displayed anyway.
- Unicasting is communication between a single sender and a single receiver over a network. This means that the video stream goes independently to each user, and each user gets their own stream. A benefit of unicasting is that if one stream fails, it only affects one user.
- Multicast is bandwidth-conserving technology that reduces bandwidth usage by simultaneously delivering a single stream of information to multiple network recipients. This technology is used primarily on delimited networks (intranets), as each user needs an uninterrupted data flow and should not rely on network routers.

## How to stream MPEG-4?

Deciding on the combination of protocols and methods to use depends on your viewing requirements, and on the properties of your network.

### RTP+RTSP

This method (actually RTP over UDP and RTSP over TCP) should be your first consideration for live video, especially when it is important to always have an up-to-date video stream, even if some images do get dropped. This can be configured as multicast or unicast.

Multicasting provides the most efficient usage of bandwidth, especially when there are large numbers of clients viewing simultaneously. Note however, that a multicast broadcast cannot pass a network router unless the router is configured to allow this. It is thus not possible to multicast over e.g. the Internet.

Unicasting should be used for video-on-demand broadcasting, so that there is no video traffic on the network until a client connects and requests the stream. However, if more and more unicast clients connect simultaneously, the AXIS 210/211 will at some point become overloaded. There is also a maximum of 20 simultaneous viewers to be considered.

### RTP/RTSP

This unicast method is RTP tunneled over RTSP. This can be used to exploit the fact that it is relatively simple to configure firewalls to allow RTSP traffic.

### RTP/RTSP/HTTP or RTP/RTSP/HTTPS

These two methods can also be used to traverse firewalls. Firewalls are commonly configured to allow the HTTP protocol, thus allowing RTP to be tunneled.

## The AXIS Media Control

The recommended method of accessing live video (MPEG-4 and/or Motion JPEG) from the AXIS 210/211 is to use the AXIS Media Control (AMC) in Microsoft Internet Explorer in Windows. This ActiveX component is automatically installed on first use, after which it can be configured by opening the AMC Control Panel applet from the Windows Control Panel. Alternatively, right-click the video image in Internet Explorer.

## Other methods of accessing the video stream

Video/images from the AXIS 210/211 can also be accessed in the following ways:

- If supported by the client, the AXIS 210/211 can use Motion JPEG server push to display video. This option maintains an open HTTP connection to the browser and sends data as and when required, for as long as required.
- As single JPEG images in a browser. Enter e.g. the path:  
`http://<ip>/axis-cgi/jpg/image.cgi?resolution=320x240`
- Windows Media Player. This requires AMC and the MPEG-4 viewing client to be installed. The paths that can be used are listed below in the order of preference.
  - Unicast via RTP: `axrtpu://<ip>/mpeg4/media.amp`
  - Unicast via RTSP: `axrtsp://<ip>/mpeg4/media.amp`
  - Unicast via RTSP, tunneled via HTTP: `axrtsphhttp://<ip>/mpeg4/media.amp`
  - Unicast via RTSP, tunneled via HTTPS: `axrtsphhttps://<ip>/mpeg4/media.amp`
  - Multicast: `axrtpm://<ip>/mpeg4/media.amp`

**Note:** <ip> = IP address



## Other MPEG-4 clients

Although it may be possible to use other clients to view the MPEG-4 stream, this is not guaranteed by Axis.

For some other clients, e.g. QuickTime™ the Video Object Type must be set to *Simple*. It may also be necessary to adjust the advanced MPEG-4 settings.

To assess the video stream from e.g. QuickTime™ the following path can be used:

```
rtsp://<ip>/mpeg4/media.amp
```

This path is for all supported methods, and the client will negotiate with the video server to determine exactly which transport protocol to use.

**Note:** <ip> = IP address

## Configuration

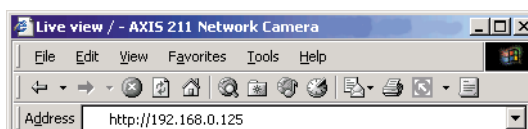
This section describes how to configure the camera, and is intended for product **Administrators**, who have unrestricted access to all the Setup tools, and **Operators**, who have access to the settings for Video & Image, Live View Config and Event Configuration.

The camera is configured under **Setup** from a standard browser (see *Technical Specifications*, on page 49).

### Accessing the Setup tools


Follow the instructions below to access the Setup Tools from a browser.

1. Start your browser and enter the IP address or host name of the camera in the location/address field.





2. The Live View page is now displayed. Click **Setup** to display the Setup tools.

Setup tools

 <p style="text-align: center;"><b>AXIS 211 Network Camera</b></p> <p style="text-align: right;"><a href="#">Live View</a>   <a href="#">Setup</a>   <a href="#">Help</a></p> <ul style="list-style-type: none"> <li>▾ <b>Basic Configuration</b></li> <li style="padding-left: 15px;"><b>Instructions</b></li> <li style="padding-left: 30px;">1. Users</li> <li style="padding-left: 30px;">2. TCP/IP</li> <li style="padding-left: 30px;">3. Date &amp; Time</li> <li style="padding-left: 30px;">4. Video &amp; Image</li> <li style="padding-left: 30px;">5. Focus</li> <li>▸ <b>Video &amp; Image</b></li> <li>▸ <b>Live View Config</b></li> <li>▸ <b>Event Configuration</b></li> <li>▸ <b>System Options</b></li> <li><b>About</b></li> </ul>	<h3 style="margin-top: 0;">Basic Configuration</h3> <p>Before using the AXIS 211 Network Camera, there are certain settings that should be made, most of which require Administrator access privileges. To quickly access these settings, use the numbered shortcuts to the left. All the settings are also available from the standard setup links in the menu.</p> <p>Focus adjustment is best performed from the shortcut shown here, although the DC-Iris setting is also available from the Advanced Image settings.</p> <p>Note that the only required setting is the IP address, which is set on the TCP/IP page. All other settings are optional. Please see the online help for more information.</p> <p><b>Software version:</b> 4.20</p>
---	---

## Video and Image settings

The following descriptions offer examples of the features available in the cameras. For details of each setting, please refer to the online help available from the setup tools. Click  to access the online help.


**AXIS 211 Network Camera**
Live View | Setup | Help

- ▶ Basic Configuration
- ▶ Video & Image
  - Image
  - Overlay Image
  - Advanced
- ▶ Live View Config
- ▶ Event Configuration
- ▶ System Options
- About

### Image Settings

**Image Appearance**

Resolution:  pixels

Compression:  [0..100]

Rotate image:  degrees

Color level:  [0..100] \*

Brightness:  [0..100] (Does not affect Test image)

Contrast:  [0..100] (Does not affect Test image)

\* Changes to color level do not affect Test image (exception 0 = B/W)

**Overlay Settings**

Include overlay image at the coordinates: X  Y

Include date       Include time

Include text:

Text color:       Text background color:

Place text/date/time at  of image

**Video Stream**

Maximum video stream time:  Unlimited

Limited to  [1..]  per session

Maximum frame rate:  Unlimited

Limited to  [1..30] fps per viewer

**Test**

Test settings (using Motion JPEG) before saving.

### Image Appearance

Use these settings to change the image as required.

The configuration of the video image and overlays will affect the camera's overall performance, depending on how it is used and on the available bandwidth. Lower compression improves video image quality, but increases the bandwidth.

The video image can be rotated and also fine-tuned by adjusting the color level, the brightness and the contrast. Please see the online help for further information on these settings.

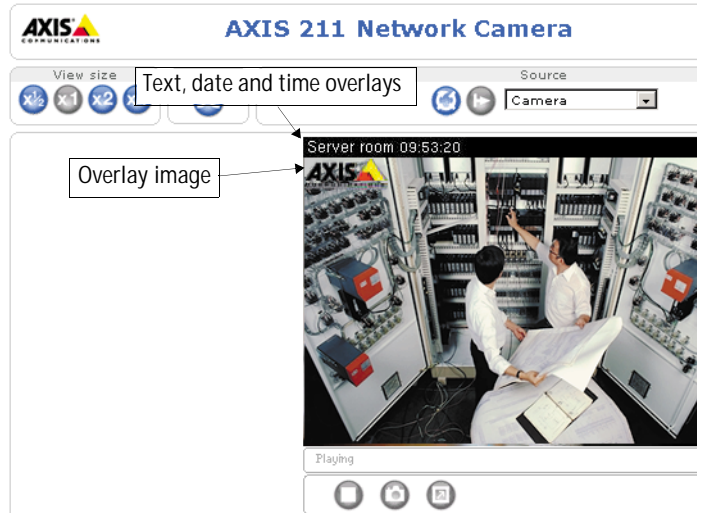
## Overlay Settings

Use these settings to include a) an image as an overlay, and/or b) the date and time, along with text of your own.

Text overlays are all included on one line at the top or bottom of the video image. Image overlays can be placed anywhere in the video image.

To upload an overlay image, see below.

**Note:** If there is information in a monitored area that you do not wish to disclose, you can mask it out by placing an overlay image on top. Setting the overlay image anywhere in the video image using coordinates allows precision detail masking.



## Video Stream

Set the **video stream time** as *unlimited*, by selecting the **Unlimited** radio button, or define a maximum time per session, in seconds, minutes or hours. When the set time has expired, a new stream can be started by refreshing the page in the browser.

The **frame rate** allowed to each viewer can also be limited, to avoid bandwidth problems on the network. To allow the highest available frame rate, select the **Unlimited** radio button.

## Test

For a preview of the image and overlay settings before saving, click **Test**. When satisfied with the settings, click **Save**. Please note that the preview image will be in JPEG format, even though the settings are valid both for Motion JPEG and MPEG-4.

## Overlay Image Settings

An overlay image is an image superimposed over the video image.

Follow these instructions to upload and use an overlay image:

1. To upload the file (the image) to the AXIS 210/211, click the **Browse** button and locate it on your computer or server.
2. Click the **Upload** button and follow the on-screen instructions.
3. The image is now available in the **Use overlay image** drop-down list.
4. Click **Save**.

**Overlay image requirements:**

Image Formats	Image Size
<ul style="list-style-type: none"> <li>Windows 24-bit BMP (full color)</li> <li>Windows 4-bit BMP (16 colors)</li> </ul>	The height and width of the overlay image in pixels must be exactly divisible by 4.

**Overlay image limitations:**

- The maximum overlay image size supported by the camera is 640x480, even when using a lower resolution. The overlay is automatically rescaled along with the image. See also the Technical Specifications, on page 49.
- Note that when a text overlay is also used, this reduces the amount of space available to the overlay image. To keep the text readable at lower resolutions, the text overlay occupies proportionally more and more space, i.e., 16 pixels in height at 640x480, 32 pixels at 320x240 and 64 pixels at 160x120.
- If the overlay is initially positioned so that part of it is outside the video image, it will be relocated so that it appears over the video image, i.e. it is always the entire image that is displayed.

Please refer to the online help for more information. 

**Advanced - Camera Settings**

These pages includes different settings for fine-tuning the video image. Note that the advanced settings available depend on the camera model.

To compensate for the **lighting conditions** the **white balance** and **exposure control** can be adjusted. The **DC-Iris** (AXIS 211 only) should always be enabled except during focusing, or when using a non-DC-Iris lens.

The settings for **Low light behavior** determine how the camera will behave at low light levels. These settings all affect video image quality and are basically a measure of how much noise to allow in the video images.

Please see the online help for further instructions on these settings.

**Advanced - MPEG-4 Settings**

Tools for adjusting the MPEG-4 settings and for controlling the video bit rate.

The MPEG-4 standard provides many different coding tools for various applications in different situations. As most MPEG-4 clients do not support all of these tools, it is usual to instead define and use subsets for different clients or groups of clients. These settings allow you to define the type of viewing client to use.

Adjusting the maximum bit rate and setting it to variable or constant is a good way of controlling the bandwidth used by the MPEG-4 video stream. For more information on these advanced settings, please see the online help. For more information on MPEG-4, see *Video Streams*, on page 14.

## **AXIS Media Control**

The AXIS Media Control (AMC) is installed automatically the first time the camera is accessed from a browser. The AMC control panel can be opened by right-clicking on the video image in the Live View web page. The AMC control panel can be used to configure various video settings. Please see the readme file included in the tool for more information.

# Live View Config

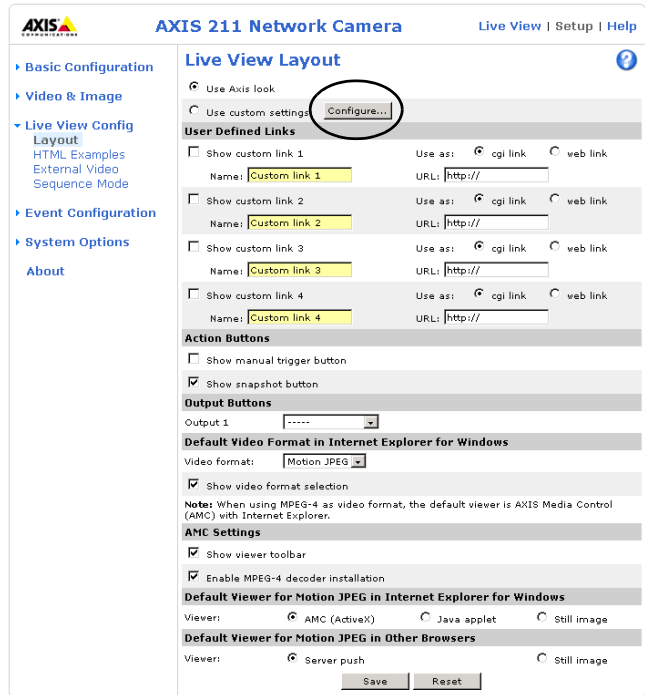
## Layout

These are the tools for deciding the layout of the Live View page.

The layout can be set in 3 ways:

- Use Axis look - the layout is unchanged.
- Use custom settings - modify the Axis look, with your own colors, images etc. Click the Configure button and see below.
- Own Home Page - Upload and use your own custom page as the default web page. Click the Configure button and see below.

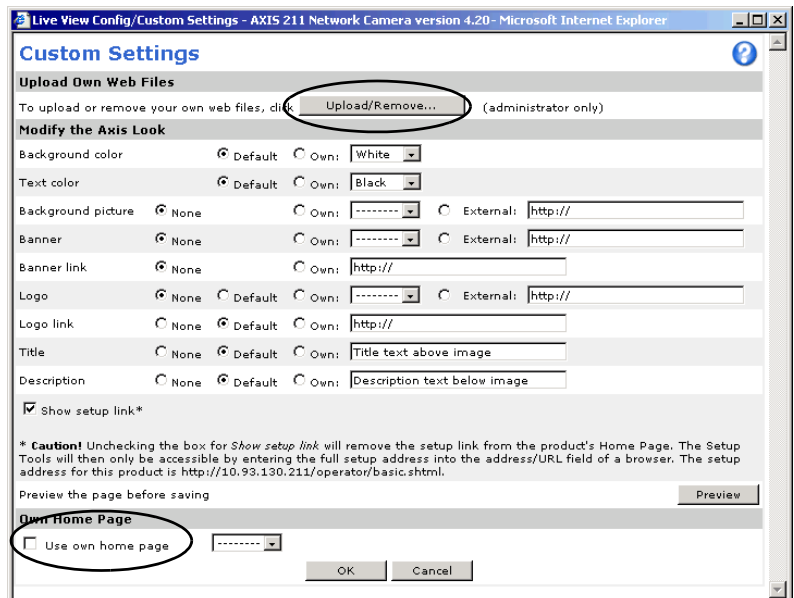
The other settings on this page mainly concern which features (e.g. buttons and links) to include. See page 25 for more information.



## Customizing the default page

The appearance of the default Live View page can be customized to suit your own requirements, or you can upload and use your own home page.

To upload your own files, click the Upload/Remove button and see the instructions below.



## Upload Own Web Files

Your own web files, background pictures, etc., must first be uploaded to the camera in order to be available for selection in the Custom Settings setup dialog. Once uploaded, the files are shown in the drop-down lists.

1. Click the **Upload/Remove** button.
2. Enter the path to the file, e.g. a file located on your workstation or click the **Browse** button.
3. Select the user level for the uploaded file. Setting the user access level means that you have complete control over which pages can be viewed by which users.
4. When the path is shown correctly in the text field, click the **Upload** button.

All uploaded files are shown in the list in the lower section of the page. To remove a file, check the box provided next to it and then click the **Remove** button.

Unchecking the box for **Show setup link** will remove the setup link from the product's Home Page. The Setup Tools will then only be accessible by entering the full setup address into the address/URL field of a browser.

If the setup link is missing, setup can be reached at this URL:  
`http://<ip address>/operator/basic.shtml.`

To use a previously uploaded web page as the default page, check the box, select the page from the drop-down list and click **OK**.



## User-defined Links

Enter a descriptive name and enter the URL in the provided field.

### Example

1. Check **Show Custom Link 1**
2. Enter a descriptive name, e.g. My Website
3. Check the radio button for web link.
4. Enter the web link: e.g. <http://www.example.com> and then click **Save**.

This link will then be shown on the Live View page and will open the specified website.



User-defined CGI links can be used to issue advanced commands via the Axis HTTP API. For more information, see the Developer pages at [www.axis.com/developer](http://www.axis.com/developer)

## Action Buttons

The manual trigger buttons can be used to manually trigger and stop an event from the Live View page. See *Event Configuration*, on page 30.

Enabling the display of the **Snapshot** button allows users to save a snapshot from the video stream by clicking the button. This button is mainly intended for use with browsers other than Internet Explorer, or when otherwise not using AXIS Media Control (AMC) to view the video stream. AMC (an ActiveX control) for Internet Explorer provides its own snapshot button.

## Output Buttons

These buttons can be used to manually activate the output from the Live View page, e.g. to switch a light on and off. There are 2 options for how the output is activated:

- The Pulse button activates the output for a defined period
- Active/Inactive displays 2 buttons, one for each action (on/off)

## Default Video Format in Internet Explorer for Windows

Select the default format to use on the Live View page. Checking the box for Show video format selection displays a drop-down list on the Live View page allowing you to temporarily change the format.

When using MPEG-4 as the video format, the default viewer is AXIS Media Control with Internet Explorer.

**Note:** It is also possible to view Motion JPEG when MPEG-4 is chosen as default, and vice versa.

## AMC (AXIS Media Control) Settings

Checking the Show viewer toolbar box displays the AMC toolbar under the video stream. This toolbar is only available when using AMC. See also *AXIS Media Control*, on page 22.

By checking the Enable MPEG-4 decoder installation box, it is also possible for the Administrator to enable or disable the installation of the MPEG-4 decoder. This is used to prevent the installation of unlicensed copies. Further decoder licenses can be purchased from your Axis dealer.

## Default Viewer for Motion JPEG

Select the appropriate radio button to define the method for viewing moving video images, depending on your browser and settings.

Please see the online help  for more information.

## HTML Examples

You can add live video from your AXIS 210/211 to your own web site. The camera can send Motion-JPEG or MPEG-4 images to up to 20 simultaneous connections, although an administrator can restrict this to fewer. Note that this does not affect or include the number of multicast viewers.

On the HTML examples page, select the required video format. For Motion JPEG, optionally modify the settings for image size, compression, etc., and then click **Update**. The camera then generates the required source code for your configuration. Copy this code and paste it into your own web page code.

If MPEG-4 multicasting is used, the video stream will be available to the viewers connected to the parts of the network where multicast is enabled. Please note that a separate MPEG-4 decoder license is required for each viewer.

## External Video

The camera can also display video images from other Axis network cameras and video servers. These are known as **External Video** sources. Each external video source is available from the drop-down list on the Live View page.

Click the **Add** button to open the External Video Source Setup dialog, which is used to make all the necessary settings. Enter the IP address or host name of the external video source you wish to add. The user can then choose to receive either MPEG-2, MPEG-4 or Motion JPEG video stream.

## Sequence Mode

The Live View page can be configured to rotate through the internal and selected external video sources, in order, or randomly.

Select the desired video sources and enter the time in seconds to display each source (up to 59 minutes). Click **Save**.

The Sequence buttons will appear on the Live View page to enable the viewer to start and stop the sequence mode.

Please see the online help  for more information.

## Event Configuration

An event in the camera is when an **Event Type** is activated and causes certain actions to be performed. The event type is the set of parameters (or conditions) that specifies how and when which actions will be performed. A common event type is when the camera uploads images when an alarm occurs. Many event types use an **Event Server**, to e.g. upload images to.

This section describes how to set up event servers and event types, i.e. how to configure the camera to perform certain actions when events (e.g. alarms) occur.


### Definitions

Event type	A set of parameters describing how and when the camera will perform certain actions	
Triggered Event - see page 31	The circumstances that start an event.	E.g. on a signal from an external device, such as a door switch or a motion sensor.
Scheduled Event - see page 32	The circumstances that start an event.	E.g. at a pre-programmed time.
Action	What occurs when the event triggers.	E.g. the upload of images to an FTP server, email notification, etc.

### Event Servers

Event Servers are used to receive e.g. uploaded image files and/or notification messages. To set up Event server connections in your camera, go to **Setup > Event Configuration > Event Servers** and enter the required information for the required server type.

Server type	Purpose	Information required
FTP Server	<ul style="list-style-type: none"> <li>Receives uploaded images</li> </ul>	<ul style="list-style-type: none"> <li>Descriptive name of your choice</li> <li>Network address (IP address or host name)</li> <li>User Name and Password (for FTP server)</li> <li>Upload path e.g. images/</li> <li>Port number</li> <li>Use passive mode if there is a firewall between the camera and FTP server</li> </ul>
HTTP Server	<ul style="list-style-type: none"> <li>Receives notification messages</li> <li>Receives uploaded images</li> </ul>	<ul style="list-style-type: none"> <li>Descriptive name of your choice</li> <li>URL (IP address or host name)</li> <li>User Name and Password (for HTTP server)</li> <li>Proxy address/Proxy port (if required)</li> <li>Proxy User Name and Password (if required)</li> </ul>
TCP Server	<ul style="list-style-type: none"> <li>Receives notification messages</li> </ul>	<ul style="list-style-type: none"> <li>Descriptive name of your choice</li> <li>Network address (IP address or host name)</li> <li>User Name and Password (for TCP server)</li> <li>Port number</li> </ul>

For details on each setting, please see the online help  available from each web page.

When the setup is complete, the connection can be tested by clicking the **Test** button (the connection test takes approximately 10 seconds).

## Configuring Event Types

An Event Type describes how and when the camera will perform certain actions.

**Example:** If somebody passes in front of the camera and an event that uses motion detection has been configured to act on this, the camera can e.g. record and save images to an FTP server, and/or send a notification email to a pre-configured email address with a pre-configured message. Images can be sent as email attachments.

### Triggered Event

A Triggered event can be activated by e.g:

- a push button connected to the camera's input port
- detected movement in a configured motion detection window
- a manually activated action, e.g. from an action button in the web interface
- on restart (reboot) after e.g. power loss

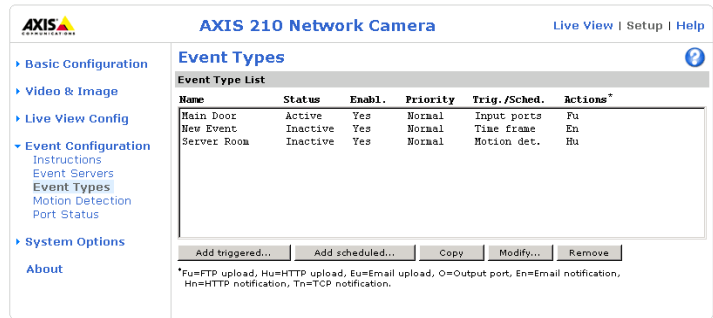
### How to set up a triggered event

This example describes how to set up the camera to upload images when e.g the main door is opened:

1. Click **Add triggered** on the Event types page.
2. Enter a descriptive name for the event, e.g. Main door open.
3. Set the **priority** - High, Normal or Low (see the online help).
4. Set the **Respond to Trigger...** parameters for when the event will be active, e.g. only after office hours.
5. Select the trigger alternative from the **Triggered by...** drop-down list, e.g. select Input ports, for a sensor connected to the door.
6. Set the **When Triggered...** parameters, i.e. define what the camera will do if the main door is opened e.g., upload images to an FTP server.
7. Click **OK** to save the Event in the Event Types list.

Please see the online help  for descriptions of each available option.

**Note:** Up to 10 event types can be configured in the camera, and up to 3 of these can be configured to upload images.



Name	Status	Enabl.	Priority	Trig./Sched.	Actions*
Main Door	Active	Yes	Normal	Input ports	Pa
New Event	Inactive	Yes	Normal	Time frame	En
Server Room	Inactive	Yes	Normal	Motion det.	Ba

## Pre-trigger and Post-trigger buffers

This function is very useful when checking to see what happened immediately before and/or after a trigger, e.g. 30 seconds before and/or after a door was opened. Check the **Upload images** checkbox under **Event Types > Add Triggered... > Triggered by...** to expand the web page with the available options. All uploaded images are JPEG images.

**Include pre-trigger buffer** - images stored internally in the server from the time immediately preceding the trigger. Check the box to enable the pre-trigger buffer, enter the desired length of time and specify the required image frequency.

**Include post-trigger buffer** - contains images from the time immediately after the trigger. Configure as for pre-trigger.

**Notes:**

- Pre-trigger and Post-trigger buffers will be lost if the connection to the event server fails.
- The maximum length of the pre-/post-buffer depends on the video image size and selected frame rate.
- If the pre- or post-buffer is too large for the camera's internal memory, the frame rate will be reduced and individual images may be missing. If this occurs, an entry will be created in the unit's log file.

**Continue image upload (unbuffered)** - enables the upload of video images for a fixed length of time. Specify the length of time for the uploaded recording, in seconds, minutes or hours, or for as long as the trigger is active. Finally, set the desired image frequency to the maximum (the maximum available) or to a specified frame rate. The frame rate will be the best possible, but might not be as high as specified, especially if uploading via a slow connection.

## Scheduled Event

A **Scheduled event** can be activated at preset times, in a repeating pattern on selected weekdays.

Configuration example:

1. Click **Add scheduled** on the **Event types** page.
2. Enter a descriptive name for the event, e.g. "Scheduled email upload."
3. Set the **priority** (High, Normal or Low).
4. Set the **Activation Time** parameters (24h clock) when the event will be active, e.g. start on Sundays at 13.00 with a duration of 12 hours.
5. Set the **When Activated...** parameters, i.e. set what the camera will do at the specified time, e.g. send uploaded images to an email address.
6. Click **OK** to save the Event in the Event Types list.

Please see the online help  for descriptions of each available option.

## Motion Detection

The motion detection feature is used to generate an alarm whenever movement occurs (or stops) in the video image. A total of 10 Include and/or Exclude windows can be configured.

- Included windows target specific areas within the whole video image
- Excluded windows define areas within an Include window that should be ignored (areas outside Include windows are automatically ignored)

Once configured, the motion detection windows will appear in the list of available triggers, for triggering events. See *How to set up a triggered event* above.

**Note:** Using the motion detection feature may decrease the camera's overall performance.

The screenshot displays the 'Motion Detection' configuration page for an AXIS 211 Network Camera. The interface is divided into several sections:

- Navigation Menu (Left):** Includes 'Basic Configuration', 'Video & Image', 'Live View Config', 'Event Configuration' (with sub-items: Instructions, Event Servers, Event Types, Motion Detection, Port Status), 'System Options', and 'About'.
- Header:** Shows 'AXIS 211 Network Camera' and navigation links for 'Live View', 'Setup', and 'Help'.
- Video Feed (Center):** A live video stream of a warehouse interior. A red rectangular window is drawn over a person in a white uniform, indicating a configured motion detection area.
- Configuration Panel (Right):**
  - Radio buttons for 'Configure Included Windows' (selected) and 'Configure Excluded Windows'.
  - A table for 'Windows Names' with 'New' and 'Del' buttons.
  - Sliders for 'Object Size', 'History', and 'Sensitivity'.
  - A 'Save' button.
  - An 'Activity' section for monitoring detected motion.
  - Radio buttons at the bottom for 'View All Windows' (selected) and 'View Selected Window'.

### How to configure Motion Detection

1. Click Motion Detection in the Event Configuration menu.
2. Click the Configure Included Window radio button.
3. Click New.
4. Enter a descriptive name under Window name.
5. Adjust the size (drag the bottom right-hand corner) and position (click on the text at the top and drag to the desired position).
6. Adjust the Object size, History and Sensitivity profile sliders (see table below for details). Any detected motion within an active window is then indicated by red peaks in the Activity window (the active window has a red frame).

7. Click **Save**.

To exclude parts of the Include window, click the **Configure Excluded Windows** button and position the Exclude window as required, within the Include window.

Please see the online help  for descriptions of each available option.

	Object Size	History	Sensitivity
High level	Only very large objects trigger motion detection	An object that appears in the region will trigger the motion detection for a long period	Ordinary colored objects on ordinary backgrounds will trigger the motion detection
Low level	Even very small objects trigger motion detection	An object that appears in the region will trigger motion detection for only a very short period	Only very bright objects on a dark background will trigger motion detection
Default value	Low	Medium to High	Medium to High

### Examples:

- Avoid triggering on small objects in the video image by setting the object size level to high.
- To reduce the number of triggers if there is a lot of movement during a short period of time, select a high history level.
- To only detect flashing light, low sensitivity can be selected. In other cases, a high sensitivity level is recommended.

## Port Status

Under **Event Configuration > Port Status** there is a list showing the status for the camera's input and output. This is for the benefit of **Operators**, who have no access to the **System Options** section.

**Example:** If the Normal state for a push button connected to an input is set to **Open circuit** - as long as the button is not pushed, the state is **inactive**. If the button is pushed, the state of the input changes to **active**.



# System Options

---

## Security

User access control is enabled by default. An administrator can set up other users, by giving these user names and passwords. It is also possible to allow anonymous viewer login, which means that anybody may access the Live View page, as described below:

Users - the user list displays the authorized users and user groups (levels):

Viewer	Provides the lowest level of access, which only allows access to the Live View page.
Operator	An Operator can view the Live View page, create and modify event types and adjust certain other settings. Operators have no access to the System Options.
Administrator	An administrator has unrestricted access to the Setup Tools and can determine the registration of all other users.

User Settings - check the relevant checkboxes to enable:

- **Anonymous viewer login** - allows any viewer direct access to the Live View page.
- **Maximum number of simultaneous viewers** - enter a value here to restrict the number of Motion JPEG viewers accessing the unit. This is useful if you need to save on bandwidth. Note that the limit of 20 users does not affect or include the number of multicast viewers.

### IP Address Filter

The administrator can add up to 256 IP addresses to the **Allowed IP Addresses** list. If the IP address filtering checkbox is checked, only the IP addresses in the list will be allowed access to the camera.

The users from these IP addresses need to be specified in the user list with the appropriate access rights (**User**, **Operator** or **Administrator**).

**Referrals** - to prevent unauthorized clients from including the video stream from the camera into external Web pages, check the **Referrals** checkbox and enter the IP address or Host name of the computer that hosts the Web pages with the included video stream. Several IP addresses/host names can be defined and are separated by semicolons (;). This option is only applicable to Motion JPEG video streams.

- Notes:**
- If the referrals feature is enabled and you wish to also allow normal access to the Live View page, the product's own IP address or host name must be added to the list of allowed referrers.
  - Restricting referrers has no effect on an MPEG-4 video stream. To restrict an MPEG-4 stream, IP address filtering must be enabled.
  - Restricting referrers is of greatest value when not using IP address filtering. If IP address filtering is used, then the allowed referrers are automatically restricted to those allowed IP addresses.

## Date & Time

**Current Server Time** - displays the current date and time (24h clock). The time can be displayed in 12h clock format in the Overlay Images (see below).


**New Server Time** - Select your time zone from the drop-down list. If you want the server clock to automatically adjust for daylight savings time, select the **Automatically adjust for daylight saving time changes**. This adjustment works for all methods.

From the **Time Mode** section, select the preferred method to use for setting the time:

- **Synchronize with computer time** - sets the time from the clock on your computer.
- **Synchronize with NTP Server** - the camera will obtain the time from an NTP server every 60 minutes. Specify the NTP server's IP address or host name.
- **Set manually** - this option allows you to manually set the time and date.

**Note:** Note that if using a host name for the NTP server, a DNS server must be configured under TCP/IP settings. See [Network > TCP/IP](#) below.

**Date & Time Format Used in Images** - specify the formats for the date and time (12h or 24h) displayed in the Live View video streams.

Use the predefined formats or use your own custom date and time formats. See **Advanced File Naming & Date/Time Formats** in the help files  for information on how to create your own file formats.

## Network - Basic TCP/IP Settings

### IP Address Configuration

The camera's IP address can be set automatically via DHCP, or a fixed IP address can be set manually. A host name can be used and there are options for setting up notification of changes in the IP address. DHCP is enabled by default.


- Notes:**
- DHCP is a protocol for automatic IP address assignment on a network. IP address assignment via DHCP may lead to the situation where the IP address changes and you lose contact. Configure the options for notification of IP address change (under **Services**) to receive notification from the video server when the IP address changes.
  - Alternatively, if your DHCP server can update a DNS server, you can access the AXIS 210/211 by host name which is always the same, regardless of the IP address.

## Services

**Options for notification of IP address change** - if the IP address for the video server changes, e.g. automatically by DHCP, you can choose to be notified of the change. Click **Settings...** and enter the required information.

**AXIS Internet Dynamic DNS Service** - If the AXIS 210/211 Video Server has been registered with the Axis Internet Dynamic DNS service and the IP address for the product changes, the service is updated to reflect the change. Check the box to enable/disable automatic updates.

The domain name currently registered at the Axis Internet Dynamic DNS service for your product can at any time be removed. To do this click **Settings...** and follow the instructions.

For more information, please refer to the online help .

## Network - Advanced TCP/IP Settings

### DNS Configuration

DNS (Domain Name Service) provides the translation of host names to IP addresses on your network.

**Obtain DNS server address via DHCP** - automatically use the DNS server settings provided by the DHCP server. Click the **View** button to see the current settings.

**Use the following DNS server address** - enter the desired DNS server by specifying the following:

**Domain name** - enter the domain(s) to search for the host name used by the AXIS 210/211. Multiple domains can be separated by semicolons (;). The host name is always the first part of a Fully Qualified Domain Name, e.g. **myserver** is the host name in the Fully Qualified Domain Name **myserver.mycompany.com** where **mycompany.com** is the Domain name.

**DNS servers** - enter the IP addresses of the primary and secondary DNS servers.

### Host Name Configuration

The AXIS 210/211 can be accessed using a host name, instead of an IP address. The host name is usually the same as the assigned DNS Name.

For more information, please see the online help .

## Link-Local Address

This is enabled by default and assigns the AXIS 210/211 an additional IP address for use with UPnP™. The AXIS 210/211 can have both a Link-Local IP and a static/DHCP-supplied IP address at the same time - these will not affect each other.

## HTTP

The default HTTP port number (80) can be changed to any port within the range 1024-65535. This is useful for e.g. simple security port mapping.

## RTSP


The RTSP protocol allows a connecting client to start an MPEG-4 stream. Enter the RTSP port number to use. The default setting is 554.

## Network Traffic

The default setting is **Auto-negotiate** which means that the correct speed is automatically selected. If necessary, you can set the connection speed by selecting it from the drop-down list.

**Maximum bandwidth** - Specify, in Mbit/s or kbit/s, the maximum bandwidth that the AXIS 210/211 is allowed to use on your network. This is a useful function when connecting the camera to busy or heavily loaded networks. The default setting is **Unlimited**.

**Note:** When using MPEG-4 as the video format, remember that setting a maximum bandwidth value here may create problems for individual video streams if the maximum value is less than the sum of the bit rates set for the video streams.

For more information, please see the online help  .

## SOCKS

SOCKS is a network proxy protocol. The camera can be configured to use a SOCKS server to reach networks on the other side of a firewall/proxy server. This functionality is useful if the camera is located on a local network behind a firewall, but notifications, uploads, alarms, etc., need to be sent to a destination outside the local network (e.g. to the Internet).

## SMTP (email)

Enter the host names or addresses for your primary and secondary mail servers in the fields provided, to enable the sending of event and error email messages from the camera to predefined addresses via SMTP.

## UPnP™

The AXIS 210/211 includes support for UPnP™, which is enabled by default. If also enabled on your computer, the camera will automatically be detected and a new icon will be added to "My Network Places."

**Note:** UPnP must also be enabled on your Windows XP or ME computer. To do this, open the Control Panel from the Start Menu and select Add/Remove Programs. Select Add/Remove Windows Components and open the Networking Services section. Click Details and then select UPnP as the service to add.

## RTP (multicast) MPEG-4

These settings are the IP address, port number, and Time-To-Live value to use for the video stream(s) in multicast MPEG-4 format. Only certain IP addresses and port numbers should be used for multicast streams. For more information, please see the online help.

## Ports & Devices

I/O Ports - the pinout, interface support and the control and monitoring functions provided by this connector are described in *The I/O Terminal Connector*, on page 42.

## LED Settings

The Status indicator LED on the front of the camera can be set to flash at a configurable interval (or to not light up at all) whenever the unit is accessed. For a listing of all LED behavior, see page 8, or the online help.

**Note:** The LED does not flash when the stream is retrieved via MPEG-4 multicast.

## Maintenance

- **Restart** - The camera is restarted without changing any of the settings. Use this method if the unit is not behaving as expected.
- **Restore** - The unit is restarted and most current settings are reset to factory default values. The settings that will not be reset are as follows:
  - the boot protocol (DHCP or static)
  - the static IP address
  - the default router
  - the subnet mask
  - the system time
- **Default** - The default button should be used with caution. Pressing this will return all of the camera's settings to the factory default values (including the IP address)

**Upgrade Server** - See *Upgrading the Firmware*, on page 44.

**Backup** - To take a backup of all of the parameters, and any user-defined scripts, click this button. If necessary, it will then be possible to return to the previous settings, if settings are changed and there is unexpected behavior.

**Restore** - click the **Browse** button to locate the saved backup file (see above) and then click the **Restore** button. The settings will be restored to the previous configuration.

**Note:** Backup and Restore can only be used on the same unit running the same firmware. This feature is not intended for the configuration of multiple units or for firmware upgrades.

## Support

The **support overview** page provides valuable information on troubleshooting and contact information, should you require technical assistance.

**Logs & Reports** - when contacting Axis support, please be sure to provide a valid Server Report with your query.

**View Information** - The **Log file**, the **Server Report** and the **Parameter List** all provide valuable information for troubleshooting and when contacting Axis support.

## Configuration

**Log Level for Log Files** - from the drop-down list, select the level of information to be added to the Log file

**Log Level for Email** - from the drop-down list, select the level of information to send as email and enter the destination email address.

## Resetting to the Factory Default Settings

To reset the camera to the original factory default settings, go to the **System Options > Maintenance** web page (as described in *Maintenance*, on page 39) or use the **Control button** on the underside of the camera (see page 7) as described below:

### Using the Control Button

To reset the camera to the factory default settings using the Control Button:

1. Disconnect the power adapter, or the network cable if using PoE (AXIS 211 only).
2. Press and hold the Control button while reconnecting the power.
3. Keep the Control button pressed until the **Status Indicator** color changes to amber (this may take up to 15 seconds).
4. Release the Control button.
5. When the Status Indicator changes to Green (which may take up to 1 minute), the process is complete and the camera has been reset. The unit will now have the default IP address 192.168.0.90

### Advanced

Scripting is an advanced function that provides the possibility to customize and use scripts. This function is a very powerful tool.

#### Caution!

Improper use may cause unexpected behavior or even cause loss of contact with the unit. If a script does cause problems, reset the unit to its factory default settings. A backup file may be of use to return the unit to its latest configuration.

**Axis strongly recommends that you do not use this function unless you fully understand the consequences.** Note that Axis support does not provide assistance for problems with customized scripts.

For more information, please visit the Developer pages at [www.axis.com/developer](http://www.axis.com/developer)

**Plain Config** - this function is for the advanced user with experience of Axis video server configuration. All parameters can be set and modified from this page. Help is available from the standard help pages.

## The I/O Terminal Connector

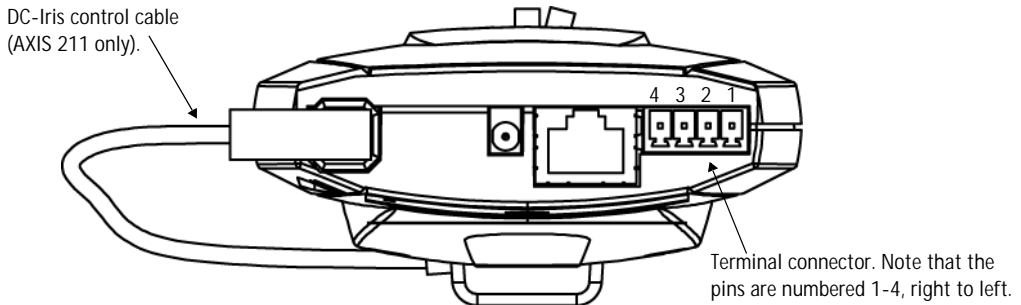
### Pinout and Interface

The 4-pin I/O terminal connector provides the interface to:

- 1 transistor output
- 1 digital input
- auxiliary power and GND

The terminal connector is used in applications for e.g. motion detection, event triggering, time lapse recording, alarm notification via email, image storage to FTP locations, etc.

- **Input** - for connecting e.g. a doorbell. If the doorbell is pressed, the state changes and the input becomes active (shown under **Event Configuration > Port Status**).
- **Output** - connects e.g. an alarm device that can be activated by Output buttons on the **Live View** page, or by an **Event Type**. The output will show as active (**Event Configuration > Port Status**) if the alarm device is activated.



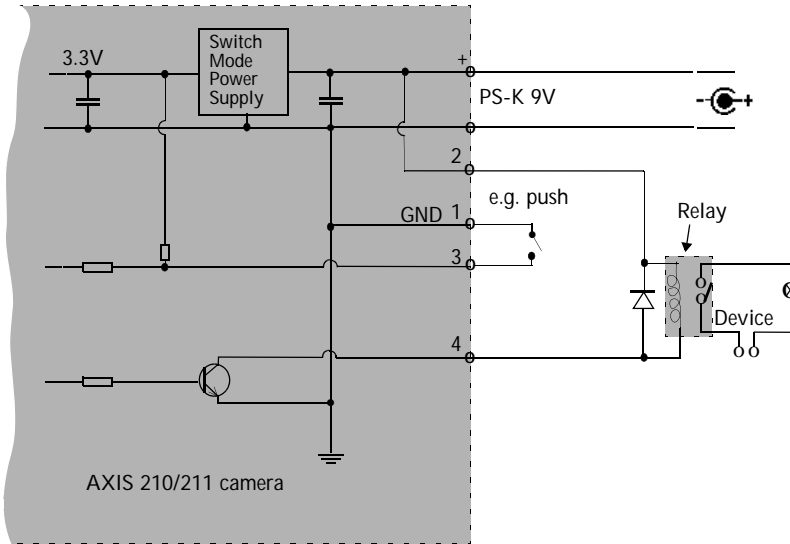
Pin	Function	Description
4	Transistor Output	With a maximum load of 100mA and a maximum voltage of 24V DC, this output has an open-collector NPN transistor with the emitter connected to pin 1 (GND). If used with an external relay, a diode must be connected in parallel with the load, for protection against voltage transients.
3	Digital Input	Connect to GND to activate, or leave floating (or unconnected) to deactivate.
2	Auxiliary DC Power Input	7-20 VDC/min 7W. Electrically connected in parallel with the PS-K power connector, this pin provides an auxiliary connector for mains power to the unit. If the unit is powered via this pin, a fuse should be used (rating: 1A Slow). This pin can also be used to power auxiliary equipment, max 100mA, but note that this is <u>not</u> possible when the AXIS 211 is powered by PoE.
1	GND	



Connect input/output devices to the terminal connector as follows:

1. Loosen the corresponding screw on top of the pin (see above for the correct pin to use).
2. Push the cable into the connector and secure it by fastening the screw.
3. Once devices are connected, connect the terminal connector to the camera, making sure that all cables are securely fastened.

### Schematic Diagram - Terminal Connectors



# Troubleshooting

---

## Checking the Firmware

One of your first actions when troubleshooting a problem should be to check the currently installed firmware version. The latest version may contain a correction that fixes your particular problem. The current firmware version in your camera can be seen on the page **Setup > Basic Configuration**.

## Upgrading the Firmware

Firmware is software that determines the functionality of the camera. When you upgrade the firmware with a file from the Axis Web site, your Axis camera will receive the latest available functionality. Always read the upgrade instructions and release notes available with each new release, before updating the firmware.

**Note:** Preconfigured and customized settings will be saved when the firmware is upgraded (providing the features are available in the new firmware) although this is not guaranteed by Axis Communications. Always read the instructions and release notes available with each new release, before upgrading the firmware.

1. Save the firmware file to your computer. The latest version of the firmware is available free of charge from the Axis Web site at [www.axis.com/techsup](http://www.axis.com/techsup)
2. Go to **Setup > System Options > Maintenance** in the camera's Web pages.
3. In the **Upgrade Server** section, browse to the desired firmware file on your computer. Click **Upgrade**.

### Upgrade Server

Upgrade the AXIS 211 Network Camera with the latest firmware.

Specify the firmware to upgrade to:   and click

**Note:** Do not disconnect power to the unit during the upgrade. The unit restarts automatically after the upgrade has completed. (1-10 minutes.)

- Notes:**
- After starting the upgrade process, always wait at least 5-10 minutes before restarting the camera, even if you suspect the upgrade has failed.
  - Your dealer reserves the right to charge for any repair attributable to faulty upgrading by the user.

## Emergency Recovery Procedure

If power or the network connection to the camera is lost during the upgrade, the process will fail and the unit will become unresponsive. A flashing red Status LED indicates a failed upgrade. To recover the unit, follow the steps below. The serial number is found on the label attached to the bottom of the camera.

1. **Unix/Linux** - From the command line, type the following:  
arp -s <IP address of camera> <Serial number> temp  
ping -s 408 <IP address of camera>

**Windows** - From a command/DOS prompt, type the following:  
arp -s <IP address of camera> <Serial number>  
ping -l 408 -t <IP address of camera>

2. If the unit does not reply within a few seconds, restart it and wait for a reply. Press CTRL+C to stop Ping.
3. Open a browser and type in the camera's IP address. In the page that appears, use the **Browse** button to select the upgrade file to use, e.g. axis210.bin or axis211.bin. Then click the **Load** button to restart the upgrade process.
4. After the upgrade has completed (1-10 minutes), the unit will automatically restart and show a steady green on the Power and Status LEDs and flashing green or amber on the Network LED.
5. Referring to the installation guide, reinstall the camera.

If the emergency recovery procedure does not get the camera up and running again, please contact Axis support at [www.axis.com/techsup/](http://www.axis.com/techsup/)

## Axis Support

If you contact Axis support, please help us to help you solve your problems, by providing the server report, the log file and a brief description of the problem.

**Server Report** - go to **Setup > System Options > Support Overview**. The server report contains important information about the server and its software, as well as a list of the current parameters.

The **Log file** is available from **Setup > System Options > Logs & Reports**. The Log file records events in the unit since the last system restart and can be a useful diagnostic tool when troubleshooting.

## Symptoms, Possible Causes and Remedial Actions

### Problems setting the IP address

When using ARP/Ping.	Try the installation again. The IP address must be set within two minutes after power has been applied to the camera. Ensure the Ping length is set to 408. See the Installation Guide.
The camera is located on a different subnet.	If the IP address intended for the camera and the IP address of your computer are located on different subnets, you will not be able to set the IP address. Contact your network administrator to obtain an appropriate IP address.
The IP address is being used by another device	<p>Disconnect the camera from the network. Run the Ping command. (In a Command/DOS window, type ping and the IP address of the unit).</p> <p>If you receive: <b>Reply from &lt;IP address&gt;: bytes = 32; time = 10 ms.....</b> - this means that the IP address may already be in use by another device on your network. You must obtain a new IP address and reinstall the unit.</p> <p>If you see: <b>Request timed out</b> - this means that the IP address is available for use with your camera. In this case, check all cabling and reinstall the unit.</p>
Possible IP address conflict with another device on the same subnet.	The static IP address in the camera is used before the DHCP server sets a dynamic address. This means that if the same default static IP address is also used by another device, there may be problems accessing the camera. To avoid this, set the static IP address to 0.0.0.0.

### The camera cannot be accessed from a browser

The IP address has been changed by DHCP.	<ol style="list-style-type: none"> <li>1) Move the camera to an isolated network or to one with no DHCP or BOOTP server. Set the IP address again, using the AXIS IP Utility (see the Installation Guide) or the ARP/Ping commands.</li> <li>2) Access the unit and disable DHCP in the TCP/IP settings. Return the unit to the main network. The unit now has a fixed IP address that will not change.</li> <li>3) As an alternative to 2), if dynamic IP address via DHCP or BOOTP is required, select the required service and then configure IP address change notification from the network settings. Return the unit to the main network. The unit will now have a dynamic IP address, but will notify you if the address changes.</li> </ol>
Other networking problems.	Test the network cable by connecting it to another network device, then Ping that device from your workstation. See the instructions above.

### Cannot send notifications, uploads, alarms, etc, to a destination outside the local network

Firewall protection.	The camera can be configured to use a SOCKS server to reach networks on the other side of a firewall/proxy server.
----------------------	--

### Camera is accessible locally, but not externally

Firewall protection.	Check the Internet firewall with your system administrator.
Default routers required.	Check if you need to configure the default router settings.

**Video/Image problems, general**

Image too dark or too light.	Check the video image settings. See the online help on Video and Image Settings.
Missing images in uploads.	This can occur when trying to use a larger image buffer than is actually available. Try lowering the frame rate or the upload period.
Slow image update.	Configuring, e.g. pre-buffers, motion detection, high-resolution images, high frame rates, etc, will reduce the performance of the camera.
Poor performance.	Poor performance may be caused by e.g. heavy network traffic, multiple users accessing the unit, low performance clients, use of features such as Motion Detection, Event handling, Image rotation other than 180 degrees.
Image gradually gets darker or lighter.	When using the camera in locations lit by fluorescent lighting, check in the advanced image settings that the Exposure control is set to Flicker-free.
Image loses focus often.	Disable the DC-Iris (AXIS 211 only) in the settings for Video & Image > Advanced. Focus the camera, following the instructions on page 11. Then enable the DC-Iris again.

**Problems with the MPEG-4 format**

Lower frame rate than expected.	<p>Insufficient light will reduce the frame rate. Adjust the low light behavior settings in the Video &amp; Image &gt; Advanced &gt; Camera settings.</p> <p>Check with the administrator that there is enough bandwidth available. Check also the settings for bit rate control, in the Video &amp; Image &gt; Advanced &gt; MPEG-4 settings. Using an inappropriate video object type can also affect the frame rate. See the online help for more information.</p> <p>Check in the AMC control panel applet (MPEG-4 tab) that video processing is not set to Decode only I frames.</p> <p>Lower the image resolution.</p> <p>Reduce the number of applications running on the client computer.</p>
No MPEG-4 displayed in the client.	<p>Check that the correct network interface is selected in the AMC control panel applet (Network tab).</p> <p>Check that the relevant MPEG-4 connection methods are enabled in the AMC control panel applet (network tab).</p> <p>In the AMC control applet, select the MPEG-4 tab and click the button Set to default MPEG-4 decoder.</p>
No multicast MPEG-4 displayed in the client.	<p>Check with your network administrator that the multicast addresses used by the AXIS 210/211 are valid for your network.</p> <p>Check with your network administrator if there is a firewall preventing viewing.</p>
Multicast MPEG-4 only accessible by local clients.	Check if your router supports multicasting, or if the router settings between the client and the server need to be configured. The TTL (Time To Live) value may need to be increased.
Poor rendering of MPEG-4 images	<p>Color depth set incorrectly on clients. Set to 16-bit or 32-bit color.</p> <p>If text overlays are blurred, or if there are other rendering problems, you may need to enable Advanced Video Rendering from the MPEG-4 tab in the AMC control panel applet.</p> <p>Ensure that your graphics card is using the latest device driver. The latest drivers can usually be downloaded from the manufacturer's web site.</p>
Color saturation is different in MPEG-4 and Motion JPEG.	Modify the settings for your graphics adapter. See the adapter's documentation for more information.
Image degeneration.	Decrease the GOV length, see the online help for more information.

**The Power indicator is not constantly lit**

Faulty power supply.	Check that you are using an AXIS PS-K power supply.
----------------------	---

**The Status and Network indicator LEDs are flashing red rapidly**

Hardware failure.	Contact your Axis dealer.
-------------------	---------------------------

**The Status indicator LED is flashing red and the camera is inaccessible**

A firmware upgrade has been interrupted or the firmware has otherwise been damaged.	See the <i>Emergency Recovery Procedure</i> above.
---	--

**No images displayed on web page**

Problem with AMC. ( <i>Internet Explorer only</i> )	To enable the updating of video images in Microsoft Internet Explorer, set your browser to allow ActiveX controls. Also, make sure that AXIS Media Control (AMC) component is installed on your workstation.
Installation of additional ActiveX component restricted or prohibited	Configure your camera to use a Java applet for updating the video images under Live View Config > Layout > Default Viewer for Internet Explorer. See the online help for more information.

**Poor quality snapshot images**

Screen incorrectly configured on your workstation	In Display Properties, configure your screen to show at least 65000 colors, i.e. at least 16-bit. Using only 16 or 256 colors will produce dithering artifacts in the image.
---	--

**Browser freezes**

Netscape 7.x or Mozilla 1.4 (or later) can sometimes freeze on a slow computer.	Lower the image resolution.
---	-----------------------------

**Problems uploading files**

Limited space.	There is only limited space available for the upload of your own files. Try deleting one or more existing files, to free up space.
----------------	--

**Overlay not displayed**

Total size of image and text overlay exceeds maximum size of 640x480.	Using a text overlay affects the amount of space available to the overlay image. The text overlay occupies proportionally more and more space the lower the resolution, i.e., 16 pixels in height at 640x480, 32 pixels at 320x240 and 64 pixels at 160x120.  Because of this, changing to a lower resolution after configuring an overlay image and a text overlay may cause the total overlay size to exceed the maximum size of 640x480, and no overlay will be displayed.
---	---

**Motion Detection triggers unexpectedly**

Changes in luminance.	Motion detection is based upon changes in luminance in the image. This means that if there are sudden changes in the lighting, motion detection may be mistakenly triggered. Lower the sensitivity setting to avoid problems with luminance.
-----------------------	--

For additional assistance, please contact your reseller or see the support pages on the Axis Website at [www.axis.com/techsup](http://www.axis.com/techsup)

# Technical Specifications

Item	Specification
Models	<ul style="list-style-type: none"> <li>• AXIS 210</li> <li>• AXIS 211</li> </ul>
Video compression	<ul style="list-style-type: none"> <li>• Motion-JPEG, including single snapshot JPEG images</li> <li>• MPEG-4 Part2 (ISO/IEC 14496-2), Profiles: ASP and SP</li> </ul>
Resolutions	<ul style="list-style-type: none"> <li>• 5 resolutions (640x480, 480x360, 320x240, 240x180, 160x120) available from configuration web page</li> <li>• Total 16 resolutions (including PAL/NTSC formats) available via the HTTP API, see <a href="http://www.axis.com/techsup">www.axis.com/techsup</a></li> </ul>
Frame rate	<ul style="list-style-type: none"> <li>• Motion JPEG: Up to 30 fps in all resolutions</li> <li>• MPEG-4: Up to 21 fps for 640x480, up to 30 fps for other resolutions</li> </ul>
Video streaming	<ul style="list-style-type: none"> <li>• Simultaneous Motion JPEG and MPEG-4</li> <li>• Controllable frame rate and total bandwidth</li> <li>• Constant and variable bit rate (MPEG-4)</li> </ul>
Image settings	<ul style="list-style-type: none"> <li>• Compression levels: 11 (Motion JPEG), 23 (MPEG-4)</li> <li>• Rotation: 90°, 180°, 270°</li> <li>• Color and black/white</li> <li>• Overlays: time, date, text, image</li> </ul>
Security	<ul style="list-style-type: none"> <li>• Multiple user levels with password protection</li> <li>• IP address filtering</li> </ul>
Users	<ul style="list-style-type: none"> <li>• 20 simultaneous viewers</li> <li>• Unlimited users using MPEG-4 multicast</li> </ul>
Alarm and event management	<ul style="list-style-type: none"> <li>• Events triggered by built-in multi-window motion detection, external input or according to set schedule</li> <li>• Image uploads via FTP, email and HTTP</li> <li>• Event notification via TCP, email, HTTP and external output</li> <li>• Up to 1200 KB memory available for pre/post alarm image storage (approx. 20 seconds 320x240 video at 4 fps)</li> </ul>
Video features	<ul style="list-style-type: none"> <li>• Electronic Shutter: 2s - 1/12500s</li> <li>• Light sensitivity AXIS 210: 3-10 000 Lux</li> <li>• Light sensitivity AXIS 211: 0.75-500 000 Lux</li> <li>• Image sensor: 1/4" Sony Wfine progressive scan RGB CCD</li> </ul>
Lens (AXIS 210)	Standard CS mount lens. F2.0
Lens (AXIS 211)	<ul style="list-style-type: none"> <li>• Varifocal DC-Iris lens with CS Mount. F1.0, 3.0-8.0mm</li> <li>• Horizontal viewing angle: 27° - 67°</li> <li>• Focus range: 0.2mm to infinity</li> </ul>
Connectors	<ul style="list-style-type: none"> <li>• Ethernet 10BaseT/100BaseTX, RJ-45</li> <li>• Terminal block: 1 alarm input, 1 output transistor (max 24 V, 0.1 A), alternative voltage input</li> </ul>
Power	<ul style="list-style-type: none"> <li>• External power adapter PS-K (included): 9V DC, 9W</li> <li>• Via terminal connector: 7-20V DC, max 5W</li> </ul>

Item	Specification
Processors and memory	<ul style="list-style-type: none"> <li>• CPU: ETRAX-100 LX 32-bit</li> <li>• Video processing and compression: ARTPEC-2 chip</li> <li>• RAM memory - 16 MB</li> <li>• Flash memory - 4 MB</li> </ul>
Power over Ethernet (AXIS 211 only)	Support for Power over Ethernet according to IEEE802.3af standard, including Power classification according to class 0 (max: 12.95W). Connection via RJ-45 network socket.
Operating conditions	<ul style="list-style-type: none"> <li>• Temperature: +5°C (41°F) to +45°C (113°F)</li> <li>• Humidity: 20-80% RHG.</li> </ul>
System integration support	<ul style="list-style-type: none"> <li>• API for software integration available at <a href="http://www.axis.com">www.axis.com</a> includes HTTP API, AXIS Media Control SDK</li> <li>• Event trigger data in video stream</li> <li>• Embedded scripting</li> <li>• Embedded operating system: Linux 2.4</li> </ul>
Minimum web browsing requirements	<ul style="list-style-type: none"> <li>• Pentium III 500 MHz or higher or equivalent AMD</li> <li>• 128 MB RAM</li> <li>• AGP graphics card, DirectDraw, 32 MB video RAM</li> <li>• Windows: XP, 2000, NT 4.0, ME or 98</li> <li>• DirectX 9.0 or later</li> <li>• Internet Explorer 5.x or later</li> </ul> <p>For other operating systems and browsers, see <a href="http://www.axis.com/techsup">www.axis.com/techsup</a></p>
Supported protocols	HTTP, TCP, RTSP, RTP, UDP, IGMP, RTCP, SMTP, FTP, DHCP, UPnP, ARP, DNS, DynDNS, SOCKS
Approvals - EMC	<ul style="list-style-type: none"> <li>• EN55022:1998+A1 (CISPR 22:1997+A1) Class B</li> <li>• EN55024:1998+A1+A2</li> <li>• EN61000-3-2:2000</li> <li>• EN61000-3-3:1995+A1</li> <li>• VCCI:2003, Class B, ITE (CISPR 22:1997+A1:2000, Class B)</li> <li>• C-Tick AS/NZS 3548</li> <li>• FCC part 15, Subpart B, Class B, demonstrated by compliance with EN55022:1998 (CISPR 22:1997) Class B</li> <li>• ICES-003 Class B, demonstrated by compliance with EN 55022:1998, Class B</li> </ul>
Approvals - Safety	<ul style="list-style-type: none"> <li>• EN60950</li> <li>• UL, CSA (PS-K power adapter)</li> </ul>
Dimensions - AXIS 210	<ul style="list-style-type: none"> <li>• HxWxD: 38 x 88 x 146mm (1 1/2 x 3 7/16 x 5 3/4")</li> <li>• Weight: 305g (10 3/4 oz) Power adapter excluded.</li> </ul>
Dimensions - AXIS 211	<ul style="list-style-type: none"> <li>• HxWxD: 38 x 95 x 172mm (1 1/2 x 3 3/4 x 6 15/16")</li> <li>• Weight: 345g (12 3/16 oz) Power adapter excluded</li> </ul>
Complimentary Software	<ul style="list-style-type: none"> <li>• AXIS Media Control (AMC) - ActiveX component software required for Microsoft Internet Explorer, installed automatically on first use.</li> <li>• Optional: AXIS IP Utility - Windows installation.</li> </ul>
MPEG-4 licensing	Licenses for one MPEG-4 encoder and one MPEG-4 decoder included. Additional licenses available from Axis dealers.



## General performance considerations

When setting up your system, it is important to consider how various settings and situations will affect performance. Some factors affect the amount of bandwidth (the bit rate) required, others can affect the frame rate, and some will affect both. If the load on the CPU reaches its maximum, this will also affect the frame rate.

The following factors are among the most important to consider:

- High image resolutions and/or lower compression levels result in larger images. Bandwidth affected.
- Access by large numbers of Motion JPEG and/or unicast MPEG-4 clients. Bandwidth affected.
- Simultaneous viewing of different streams (resolution, compression, etc.) by different clients. Frame rate and bandwidth affected.
- Accessing both Motion JPEG and MPEG-4 video streams simultaneously. Frame rate and bandwidth affected.
- Heavy usage of event settings affects the camera's CPU load. Frame rate affected.
- Enabled motion detection. Frame rate and bandwidth affected.
- Heavy network utilization due to poor infrastructure. Bandwidth affected
- Viewing on poorly performing client PC's lowers perceived performance. Frame rate affected.

## Optimizing your system

To see the bandwidth and frame rate currently required by the video stream, the AXIS 210/211 provides a tool that can be used to display these values directly in the video image.

To do this, special format strings are added as part of a text overlay. Simply add **#r** (average frame rate in fps) and/or **#b** (average bandwidth in kbps) to the overlay.

For detailed instructions, please see the online help for **Video & Image > Overlay Settings**, and the help for **File Naming & Date/Time Formats**.

### Important!

- The figures displayed here are the values as delivered by the camera. If other restrictions are currently in force, (e.g. bandwidth limitation) these values might not correspond to those actually received by the client.
- For Motion JPEG, these values will only be accurate as long as no frame rate limit has been specified.

**Overlay Settings**

Include overlay image at the coordinates:

Include date  Include time

Include text:

## Frame rates - Motion JPEG and MPEG-4

The following table shows typical frame rates in frames/second (fps) for Motion JPEG and MPEG-4 video streams from the AXIS 210/211.

Note that these values are guidelines only - actual values may vary.

Motion JPEG settings:

- Viewing in AMC
- Compression level = 30%

MPEG-4 settings:

- Viewing in AMC
- Compression level = 30%
- Video Object Type = Advanced Simple
- GOV length = 8
- GOV structure = IP\*

Frame rates		
	Motion JPEG	MPEG-4
640x480	30	21
480x360	30	30
320x240	30	30
160x120	30	30

\*Note that setting the GOV structure to use "I-frames only" will increase the frame rate.

## Bandwidth

As there are many factors that affect bandwidth, it is very difficult to predict the required amounts. The settings that affect bandwidth are:

- the image resolution
- the image compression
- the frame rate
- the MPEG-4 object type
- the MPEG-4 GOV structure
- the maximum exposure time.

There are also factors in the monitored scene that will affect the bandwidth. These are:

- the amount of motion
- the image's complexity
- the lighting conditions.

For MPEG-4, if there is only limited bandwidth available, and if this is more important than the image quality, using a constant bit rate (CBR) is recommended. Use a variable bit rate (VBR) if the image quality needs to be maintained at a higher level. If supported on the network, consider also using MPEG-4 multicasting, as the bandwidth consumption will be much lower.

# Glossary of Terms

**ActiveX** - A control (or set of rules) used by a browser. ActiveX controls are often downloaded and installed automatically as required.

**AMC** - AXIS Media Control. The control required for viewing video images in Internet Explorer. Installs automatically on first use.

**API** - Application Programming Interface. The Axis API can be used for integrating Axis products into other applications.

**ARP** - Address Resolution Protocol. Used to associate an IP address to a hardware MAC address. A request is broadcast on the local network to find out what the MAC address is for the IP address.

**ARTPEC** - Axis Real Time Picture Encoder - used for video image compression.

**CCD** - Charge Coupled Device. CCD is one of the two main types of image sensors used in digital cameras. When a picture is taken, the CCD is struck by light coming through the camera's lens. Each of the thousands or millions of tiny pixels that make up the CCD convert this light into electrons.

**CGI** - Common Gateway Interface. A set of rules (or a program) that allows a Web Server to communicate with other programs.

**Client/Server** - Describes the network relationship between two computer programs in which one, the client, makes a service request from another - the server.

**DC-Iris** - This special type of iris is electrically controlled by the Axis camera, to automatically regulate the amount of light allowed to enter.

**DNS** - The Domain Name System (DNS) locates and translates Internet domain names into IP (Internet Protocol) addresses.

**Ethernet** - A widely used networking standard.

**ETRAX** - Axis' own microprocessor.

**Firewall** - A virtual barrier between a LAN (Local Area Network) and other networks, e.g. the Internet.

**FTP** - File Transfer Protocol. Used for the simple transfer of files to and from an FTP-server.

**HAD** - Hole Accumulation Diode. A HAD CCD design allows for more light to reach the imager, which reduces video noise to improve signal-to-noise ratio by up to 6dB (2x better than a standard CCD imager). Particularly effective when shooting in dark situations.

**HTML** - Hypertext Mark-up Language. Used widely for authoring documents viewed in web browsers.

**HTTP** - Hypertext Transfer Protocol. The set of rules for

exchanging files (text, images, sound, video, and other files) on the World Wide Web.

**Intranet** - A private network limited to an organization or corporation. Usually closed to external traffic.

**IP** - Internet-Protocol. See TCP/IP.

**IP address** - A unique number used by a network device, to allow it to be identified and found on the network. The 32-bit IP address is made up of four groups (or quads) of decimal digits separated by periods. An example of an IP address is: 192.168.0.1

**ISMA** - Internet Streaming Media Alliance

**JPEG** - A standard image format, used widely for photographs. Also known as JPG.

**LAN** - A local area network (LAN) is a group of computers and associated devices that typically share common resources within a limited geographical area.

**Linux** - A popular operating system, which is "open source" and practically free of charge.

**Lux** - A standard unit for the measurement of light, where 1 Lux equals the light emitted from a single candle at a distance of one meter.

**Mbit/s** - Megabits per second. A unit for measuring speeds in networks. A LAN might run at 10 or 100 Mbit/s.

**MPEG-4** - A video compression standard that makes good use of bandwidth, and which can provide DVD-quality video streams at less than 1 Mbit/s.

**Multicast** - A bandwidth-conserving technology that reduces bandwidth usage by simultaneously delivering a single stream of information to multiple network recipients.

**NTSC** - National Television Standards Committee. NTSC is the standard format used for televisions in most of North and Central America, and Japan.

**NWAY** - A network protocol that automatically negotiates the highest possible common transmission speed between two devices.

**PAL** - Phase Altering Line. PAL is the standard format used for televisions in most of the world (other than the US, Canada, and Japan).

**Ping** - A small utility used for sending data packets to network resources to check that they are working and that the network is intact.

**Pre/post alarm image** - The images from immediately before and after an alarm.

**Protocol** - A special set of rules governing how two entities will communicate. Protocols are found at many levels of communication, and there are hardware protocols and software protocols.

**Router** - A device that determines the next network point to which a packet should be forwarded on its way to its final destination. A router is often included as part of a network

switch (see below).

**RTP**- Real-Time Transfer Protocol. A transfer protocol designed for delivery of live contents, e.g. MPEG-4.

**Simplex** - In simplex operation, a network cable or communications channel can only send information in one direction.

**SMTP** - A common e-mail protocol.

**Subnet Mask** - An IP address consists of two components: the network address and the host address. "Subnetting" enables a network administrator to further divide the host part of the address into two or more subnets. The subnet mask identifies the subnet to which an IP address belongs.

**Switch** - Whilst a simple hub transmits all data to all devices connected to it, a switch only transmits the data to the device it is specifically intended for.

**TCP/IP** - Transmission Control Protocol/Internet Protocol. A suite of network protocols that determine how data is transmitted. TCP/IP is used on many networks, including the Internet. TCP keeps track of the individual packets of information and IP contains the rules for how the packets are actually sent and received.

**Unicast** - Communication between a single sender and a single receiver over a network. A new connection is established for each new user.

**UPnP™** - An "address" on the network. UPnP is an architecture for peer-to-peer network connectivity of intelligent appliances, wireless devices, and PCs.

**URL** - Uniform Resource Locator. An "address" on the network.

**Varifocal** - A varifocal lens provides a wide range of focal lengths, as opposed to a lens with a fixed focal length, which only provides one.

**WAN** - Wide-Area-Network. Similar to a LAN, but on a larger geographical scale.

**Web server** - A program on a computer (server) providing the resources (e.g. web pages) requested by the user (client).

# Index

---

## A

- Action 30
- Action Buttons 12, 27
- Active/Inactive 12, 27
- Administrator 18
- Administrators 35
- Alarm 33, 42
- AMC 9
- AMC Viewer Toolbar 13
- Auxiliary Power 42
- AXIS Media Control 24

## B

- Backup 40
- Bandwidth 52
- Basic Configuration 19
- Buffer Size 32
- Buffers 32

## C

- CGI links 27
- Configuration 18
- Control Button 7, 41
- Customize 25

## D

- Date & Time 36
- DC Power 42
- Default Viewer 28
- DNS Configuration 37
- DNS Server 37
- Domain Name 37

## E

- Emergency Recovery 45
- Event Servers 30
- Event Types 31
- Events 30
- External Video 29
- External Video Source 12

## F

- Factory Default Settings 41
- Frame rate 22
- FTP Server 30

## H

- Host Name 37
- HTTP API 27
- HTTP Server 30

## I

- I/O Ports 39
- I/O Terminal Block 7, 42
- Include Windows 33
- Input 42
- IP Address Filtering 35

## L

- Live View 12, 18
- Live View Config 25
- Logs & Reports 40

## M

- Motion Detection 33
- MPEG-4 5

## N

- Network Connector 7
- Network Settings 36
- NTP Server 36

## O

- Operators 35
- Output 42
- Output Buttons 12, 27
- Own Web Files 26

## P

- Pinout - I/O connectors 42
- Port Status 34
- Ports & Devices 39
- Post-trigger Buffer 32
- Power Connector 7

Pre-trigger Buffer 32  
Pulse 12, 27

## R

Recovery 45  
Referrals 35  
Restore 39, 40

## S

Scheduled Event 30, 32  
Security 35  
Sequence Mode 12, 29  
Server Time 36  
Services 36  
Setup Tools 19  
Snapshot button 12  
Support 40  
System Options 35  
System Options Overview 20

## T

TCP Server 30  
TCP/IP Settings 36  
Terminal Block 42  
Time Mode 36  
Triggered Event 30  
Troubleshooting 44

## U

Upgrade Server 39  
Uploading web files 26  
User Defined Links 26  
Users 19, 35

## V

Video Stream 22  
View Size 12