



Axon Body 3 Camera User Manual



Models AX1021 and AX1023
Document Revision: DRAFT B
June 2019

Apple, iOS, and Safari are trademarks of Apple, Inc. registered in the US and other countries.

Firefox is a trademark of The Mozilla Foundation registered in the US and other countries.

Google, Google Play, Android, and Chrome are trademarks of Google, Inc.

Microsoft, Azure, Windows, Internet Explorer, and Excel are trademarks of Microsoft Corporation registered in the US and other countries.

Javascript is a trademark of Oracle America, Inc. registered in the US and other countries.

®, Axon, Axon Body 3, Axon Commander, Axon Evidence, Axon Signal, and Axon View are trademarks of Axon Enterprise, Inc., some of which are registered in the US and other countries. For more information, visit www.axon.com/legal.

All rights reserved. ©2019 Axon Enterprise, Inc.

Table of Contents

Introduction	5
Maximum Video Length	5
Important Safety and Health Information	5
Additional Reading.....	5
Getting to Know Your Axon Body 3 Camera	7
Accessories	10
Operating the Axon Body 3 Camera.....	11
Operating Modes	11
Turning on the Camera and Ready (Buffering) Mode	11
Starting Recording (Event) Mode.....	12
Muting Audio Recording.....	12
Adding Markers while Recording.....	13
Lighting the Camera Display.....	13
Battery Status	13
Configuring Your Camera	13
Adjusting Audio Prompt Volume	13
Turning On or Off Camera Lights	14
Turning On or Off Camera Vibrations.....	15
Stealth Mode	15
Using Axon View	16
Pairing Your Axon Body 2 Camera with a Smart Device	17
Other Settings and Functionality	17
Axon Signal.....	17
Button, Notification, and Display Reference Tables	18
Button Actions	18
Camera Display.....	19
Notifications	20
LED Status	21
Operation LED	21
Triad LED (in the field)	21
Triad LED (in an Axon Dock).....	21
Care and Maintenance.....	22
Cleaning the Camera	22
Charging the Battery.....	22
Camera Internal Clock.....	22

Camera Storage.....	23
Replacing the Battery.....	23
Troubleshooting and Other Information	30
Technical Support.....	30
Warranty Policy.....	30
Warnings	30
Radio Waves	30
Compliance Marks	32

Introduction

The Axon Body 3 is a camera system incorporating an audio and video recording device. This camera is designed for use in tough environmental conditions encountered in law enforcement, corrections, military, and security activities. The Axon Body 3 camera is designed to record events for secure storage, retrieval, and analysis to the Axon Evidence (Evidence.com) or Axon Commander services. The recorded events are transferred to your storage solution using the Axon Body 3 Dock. Additionally, the Axon View application enables playback of footage on a smart device for review prior to storing the data.

The Axon Body 3 camera has 2 operating modes; Ready mode and Recording mode. The Ready, or Buffering, mode provides pre-event buffering to capture activities that occur prior to the user activating the Recording, or Event, mode.

Maximum Video Length

The maximum length of an Axon camera recording is 4 hours. In situations where an Axon camera is in Event mode for more than 4 hours, the current video recording stops at 4 hours and a new video recording will start.

Important Safety and Health Information

Read, understand, and follow all warnings and instructions before using this product. The most up-to-date warnings and instructions are available at www.axon.com.

Additional Reading

This manual explains how to operate the Axon Body 3 camera hardware. Other manuals cover additional aspects of the Axon Body 3 system. These documents are available at help.axon.com.

For information on working with uploaded videos and managing Axon Body 3 cameras, including inventory management and agency-wide settings, see the *Axon Evidence User and Administrator Reference Guide*.

For information on installing and setting up Axon Body 3 Docks to transfer information and recharge your camera, see the *Axon Body 3 Dock Installation Manual*.

For instructions on using Axon cameras with a smart device, see the *Axon View for Android Devices User Manual* or the *Axon View for iOS Devices User Manual*.

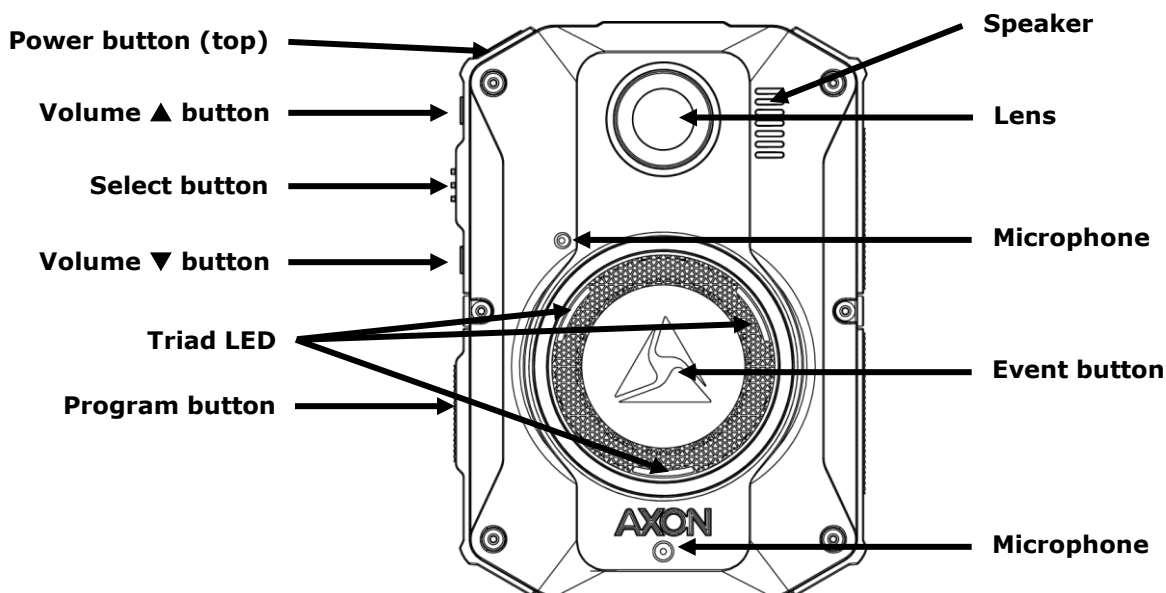
The Axon Academy website explains how to register for and use the Axon Evidence (Evidence.com) website, configure settings, install Evidence Sync software, assign

personnel to cameras, recharge your camera, and transfer video from an Axon device to a computer. Visit academy.axon.com.

Getting to Know Your Axon Body 3 Camera

The Axon Body 3 camera includes physical controls to enable video and audio capture while providing visual, audible, and vibration notifications of the Axon Body 3 camera's state of operation.

The following images show the different components on the Axon Body 3 camera.



Axon Body 3 Camera front

Power button – Turns the camera's power on or off. When off, press to turn on camera. When on, press and hold for 3 seconds to turn camera off. The camera might take several additional seconds to close out of the video if it is powered off before stopping a recording.

Lens – The camera lens.

Speaker – Provides audio notifications.

Volume ▲ button – Used to increase speaker volume, turn off the camera lights, and exit stealth mode.

Select button – Used to mute audio recording, to add markers to the video during recording, and activate Display backlight.

Volume ▼ button – Used to decrease speaker volume and enter and exit stealth mode.

Microphones – For recording audio.

Event button – Used to start and stop recording. Double-press to start recording. Press and hold for 3 seconds to stop recording and return to Ready (buffering) mode.

Triad LED – In the field, can show the camera's operating mode. In an Axon Dock, displays camera status and battery capacity.

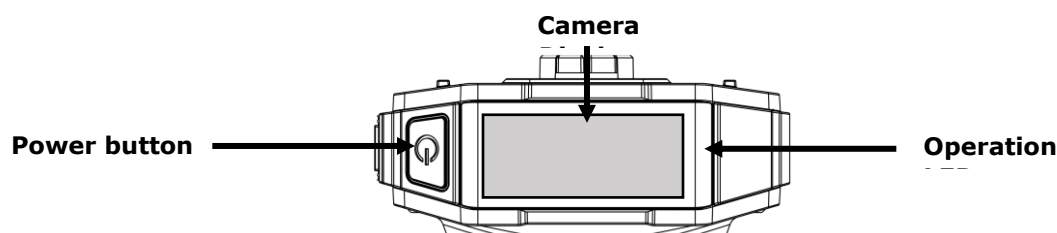
In the field, the Triad LED on the front of the camera can be configured to display the camera's operating mode.

Operating Mode	Triad LED
Ready (Buffering)	Blinking green
Recording	Blinking red

In the Axon Dock, the Triad LED on the front of the camera shows the device status and battery capacity. See the camera display for additional information.

Device Status	Triad LED
Battery is fully charged (> 98%)	Solid green
Battery capacity is at mid-range (33% to 97%)	Solid yellow
Battery capacity is at low-range (< 33%)	Solid red
Uploading data, downloading data, or applying device settings	Spinning yellow (cycling yellow on each Triad LED)
Applying a firmware update - DO NOT remove camera from Axon Dock	Spinning white (cycling white on each Triad LED)
Possible network error. Refer to Troubleshooting section of the Axon Body 3 User Manual or go to help.axon.com .	Blinking red, yellow and green (cycling all colors)
Device error. Refer to device page in Axon Evidence.	Blinking red

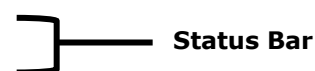
Program button – Used in conjunction with the Event button to activate pairing.

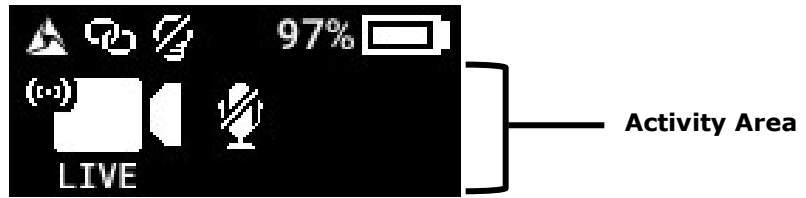


Axon Body 3 Camera top

Camera Display – Shows information on camera status and activity. Different information is shown when the Axon Body 3 camera is in the field and in an Axon Dock. Note that some icons may not be active or displayed at your agency.

The display is divided into a Status Bar and Activity Area.



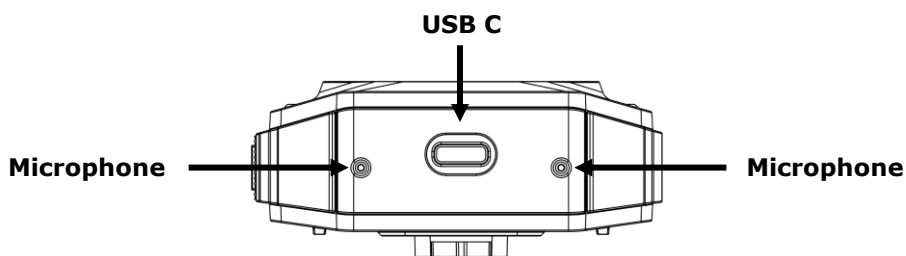
**In the Field****In an Axon Dock**

Status Bar Icon	Description	Status Bar Icon	Description
	Battery capacity		Battery capacity
	Camera paired		Charging
	Lights off		Connected to Axon Evidence for upload and update
	Stealth mode on		
	Connected to Axon Evidence for live streaming		

Activity Area Icon	Description	Activity Area Icon	Description
	Ready (Buffering) mode		Upload in progress
	Microphone off (mute mode)		Updating firmware or settings
	Recording		Assigned officer ID (shown when no other activity is in progress)
	Recording started by Axon Signal broadcast		
	Axon Aware Live Streaming		
	Recording started by gunshot detection		

Operation LED – Shows information about the camera's current operating mode.

Operating Mode	Operation LED
Recording	Blinking red
Ready (Buffering)	Blinking green
Booting up/powering down	Solid red
Mute enabled or Pairing mode	Blinking blue
Axon Aware Live Streaming	Blinking purple
Low battery or error	Blinking yellow
Firmware update (while in an Axon Dock)	Solid white



Axon Body 3 Camera bottom

USB C connector – Used for data transfer and charging when placed in an Axon Dock.

Accessories

The Axon Body 3 camera is designed to work with a variety of Axon mounting systems.

The various mounts that use this system can be used with a wide variety uniforms, and holds the camera to your shirt, patrol vest, jacket, or belt.

In general, Axon mounting system consist of the attachment piece (called the key) on the camera and the attachment receiver (called the lock) on the mount. To lock a camera in place, insert the key of the camera into the lock of the mount and turn it 90 degrees counterclockwise (when you are looking straight at the mount). To release the camera from the mount, turn the camera 90 degrees clockwise.

You can find further information on mounting options on www.axon.com.

Operating the Axon Body 3 Camera

Before using an Axon Body 3 camera, ensure it is fully charged and properly configured. See [Charging the Battery](#) for more information.

Operating Modes

The Axon Body 3 camera system has two operating modes:

1. Ready (Buffering) – turning on the camera and starting pre-event buffering
2. Recording (Event) - event recording

Turning on the Camera and Ready (Buffering) Mode

1. Press the power switch on the camera. The camera provides audio and haptic notification when it is starting up.

With the camera turned on, the starts up and transitions to Ready mode. When Ready begins:

- The Camera Display shows READY
- The Operation LED on top of the camera blinks green
- The camera will be capturing video, but does not record to permanent memory while in Ready mode.

Buffered video duration is 30 seconds by default (00:00:30).

When Recording (Event) mode is activated, the buffered video captured directly before the event is saved and attached to the event in permanent memory. This feature is intended to capture the video of an incident just before a recording begins.

With default settings, the system does not capture audio during camera buffering, so anything recorded in that mode will be video-only.

Ready mode starts only after the Axon Body 3 camera is turned on. The system does not record when the camera is turned off.

Notes:

- An agency can turn off camera buffering. If your agency has deactivated camera buffering, your Axon Body 3 camera will operate the same way as described in this manual, but the camera will not record anything until you double-press the EVENT button.

- An agency can extend the camera buffering duration to 2 minutes total (00:02:00).
- An agency can configure the camera buffering to records audio as well as video.

Starting Recording (Event) Mode

1. To begin recording, double-press the Event button on the camera.
 - Depending on your agency configuration, other events or actions can cause your camera to transition from Ready (buffering) to Recording mode. An example of this is if a device with Axon Signal technology broadcasts a signal.

When your camera starts recording, you will hear 2 beeps and 2 vibrations. The Camera Display shows the recording icon.

The system now records audio as well as video. The buffered video captured directly preceding the event is saved and attached to the event recording (Note: With default settings, the buffered video does not contain audio). The moment Recording mode begins, both video and audio are recorded from the camera and GPS coordinates are recorded. This will continue throughout the duration of the recording until you stop the recording.

The camera provides you with indications that it is in Recording mode:

- At the start of an event and every 2 minutes during an event, the system beeps and vibrates 2 times.
 - The Operation LED on the camera blinks red.
2. To stop recording and return to Ready mode, Press and hold the Event button for 3 seconds.

The system will beep and vibrate once (with a long tone).

3. To turn off the system, press and hold the power switch for 3 seconds.

Muting Audio Recording

If your organization's administrator has configured your Axon Body 3 camera to do so, you can use the Select button to enter mute mode (disable audio recording) while recording video. This feature may be useful in sensitive situations. To enter and exit mute mode:

1. Press and hold the Select button for 3 seconds to mute the audio capture. The Operation LED will blink blue while the camera is muted.
2. Press and hold the Select button another 3 seconds to re-enable the audio recording.

Adding Markers while Recording

The Select button can be used to add a marker while recording video. The marker is shown when the video is replayed in Axon Evidence and documented in the audit trail. Markers are useful for indicating an important event that you want to easily find when replaying the video.

To add a marker to a video while you are recording:

- Press and release the Select button within 1 second.

Lighting the Camera Display

At night and in low-light situations, you can use the Select button to backlight the Camera Display. To backlight the display:

- Double-press the Select button. The Camera Display is backlit for 2 seconds.

Battery Status

The battery capacity for your Axon Body 3 camera is shown in the Camera Display.

Configuring Your Camera

During normal operation an Axon Body 3 camera uses lights, sounds (audio prompts), and vibrations (haptic feedback) to notify you of the camera status. These indicators and notifications are normally managed by your organization but can be configured to allow you to change the setting for your assigned camera. Check with your organization's Axon administrator to learn which configuration settings you can change.

Adjusting Audio Prompt Volume

During normal operation, Axon Body 3 cameras emit beeping sounds, called audio prompts, to notify you of the camera status.

If allowed by your organization, there are several ways you can adjust camera audio prompt volume.

Using Camera Controls

Use the Volume ▲ and Volume ▼ buttons to adjust the volume. The camera provides audio feedback as the volume changes.

Using Axon View

Go to help.axon.com or see the *Axon View for Android Devices User Manual* or the *Axon View for iOS Devices User Manual* for detailed information about using Axon View.

Your Axon Body 3 camera must be turned on and paired with your mobile device. Open Axon View app on your mobile device and go to Settings. Tap Volume and select the volume level. The camera beeps once at the volume that you tapped, or if you tapped Off, the camera does not beep.

Turning On or Off Camera Lights

During normal operation, Axon Body 3 cameras use the LED lights to show the camera status.

For some situations, you may wish to turn off the LED lights for your camera. If allowed by your organization, there are several ways you can turn off and on the camera lights.

Using Camera Controls

- To turn off the camera lights - Press and hold Volume ▲ for 3 seconds, the lights will turn off and the Lights Out icon is shown on Camera Display.
- To turn on the camera lights - Press and hold Volume ▲ for 3 seconds, the lights will turn on and the Lights Out icon is no longer shown on Camera Display.

Using Axon View:

Go to help.axon.com or see the *Axon View for Android Devices User Manual* or the *Axon View for iOS Devices User Manual* for detailed information about using Axon View.

Your Axon Body 3 camera must be turned on and paired with your mobile device. Open Axon View app on your mobile device and go to Settings. Tap the switch to the right of the **Indicator Lights** to change the setting.

Using Axon Evidence:

Go to help.axon.com or see the *Axon Evidence.com User and Administrator Reference Guide* for detailed information about changing device settings.

Note: The updated settings will not take effect until the next time the camera is docked.

Sign in to your Axon Evidence account and go to the Device Profile page for your Axon Body 3 camera. In the Device Settings section, Use the **Indicator Lights** toggle switch to turn the light off or on. Save the new setting.

Turning On or Off Camera Vibrations

During normal operation, Axon Body 3 cameras use vibrations (haptic feedback) to notify you of the camera status.

For some situations, you may wish to turn off the vibrations for your camera. If allowed by your organization, there are several ways you can turn off and on the camera vibrations.

Using Axon View:

Go to help.axon.com or see the *Axon View for Android Devices User Manual* or the *Axon View for iOS Devices User Manual* for detailed information about using Axon View.

Your Axon Body 3 camera must be turned on and paired with your mobile device. Open Axon View app on your mobile device and go to Settings. Tap the switch to the right of the **Vibration** to change the setting.

Using Axon Evidence:

Go to help.axon.com or see the *Axon Evidence.com User and Administrator Reference Guide* for detailed information about changing device settings.

Note: The updated settings will not take effect until the next time the camera is docked.

Sign in to your Axon Evidence account and go to the Device Profile page for your Axon Body 3 camera. In the Device Settings section, Use the **Vibration** toggle switch to turn the light off or on. Save the new setting.

Stealth Mode

For some situations, you may wish to turn off the LED lights, sounds (audio prompts), and vibrations (haptic feedback) on your Axon camera. Turning off all the indicators and notifications is also known as stealth mode.

If allowed by your organization, there are several ways you can enter and exit stealth mode.

Using Camera Controls

- To enter Stealth mode - Press and hold Volume ▼ for 3 seconds. The word STEALTH is briefly shown in Camera Display activity area and an S icon is shown in the Camera Display status bar.

- To exit Stealth mode - Press and hold Volume ▼ or Volume ▲ for 3 seconds. The S icon is no longer shown on Camera Display status bar.

Using Axon View:

Go to help.axon.com or see the *Axon View for Android Devices User Manual* or the *Axon View for iOS Devices User Manual* for detailed information about using Axon View.

Your Axon Body 3 camera must be turned on and paired with your mobile device. Open Axon View app on your mobile device and go to Settings. Tap the switch to the right of the **Stealth Mode** to change the setting.

Using Axon Evidence:

Go to help.axon.com or see the *Axon Evidence.com User and Administrator Reference Guide* for detailed information about changing device settings.

Note: The updated settings will not take effect until the next time the camera is docked.

Sign in to your Axon Evidence account and go to the Device Profile page for your Axon Body 3 camera. In the Device Settings section, Use the **Stealth** toggle switch to turn the light off or on. Save the new setting.

Using Axon View

The Axon View application enables you to replay video and add metadata (title, case ID, and category) to your videos using a smart phone or other smart device.

To download and install Axon View:

1. Use your smart device to search for and download the Axon View application from the Play Store or the App Store.
2. On your smart device, install and open the Axon View application.
3. Follow the on-screen instructions or go to help.axon.com for additional information.

Note: All data is stored on the Axon camera. No videos are stored on your smart device.

Go to help.axon.com or see the *Axon View for Android Devices User Manual* or the *Axon View for iOS Devices User Manual* for information about using Axon View.

Pairing Your Axon Body 2 Camera with a Smart Device

For additional information on using Axon cameras with a smart device, go to help.axon.com or see the *Axon View for Android Devices User Manual* or the *Axon View for iOS Devices User Manual*.

1. Turn on the Axon Body 3 camera.
2. Open Axon View, select a Body 3 camera and tap **Initiate Pairing**.
3. Hold down the **Program** and **Event** buttons for 3 seconds.
4. Wait until you hear three high-pitch tones and the Operation LED is blinking blue.
5. Follow the Axon View on-screen instructions.

Other Settings and Functionality

Your organization's Axon administrator can configure additional settings and functionality (such as video quality, pre-event buffer time, and live streaming) for your Axon Body 3 camera. Check with your Axon administrator for information about which settings and functionality are available for your camera.

Axon Signal

The Axon Body 3 camera is compatible with Axon Signal technology. However, your agency's Axon Evidence administrator must activate the Axon Signal capability for it to work.

When it is active, Axon Signal technology can broadcast a signal that allows your Axon Body 3 camera to transition from Ready to Recording mode automatically. When your camera starts recording, you will see, hear, and feel all the normal start recording notifications.

Axon Signal technology transmissions only allow cameras to start recording. Axon Signal technology does not transmit a signal to end recording. The camera must be stopped manually.

Axon Signal technology cannot turn an Axon system on. If the Axon Body 3 camera is turned off, the camera will not record, even if a device equipped with Axon Signal technology transmits a signal.

Devices equipped with Axon Signal technology have a signal range of approximately 30 feet (9.1 meters) and can be purchased separately from the Axon Body 3 camera.

Button, Notification, and Display Reference Tables

This section has consolidated lists of the Axon Body 3 camera button actions, notifications, camera display icons, and LED indications.

Button Actions

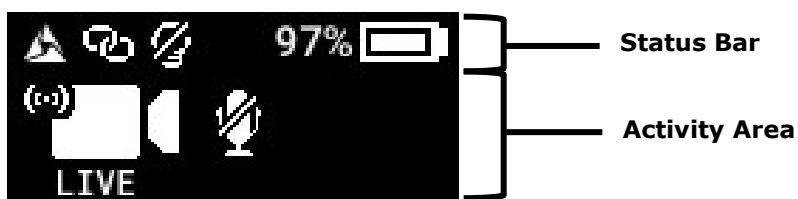
The Axon Body 3 camera has six buttons. The actions associated with each button are described below.

Button	Actions
Power	<ul style="list-style-type: none"> When off, press to turn camera on. Camera enters Ready (Buffering) mode. When on, press and hold for 3 seconds to turn camera off.
Event	<ul style="list-style-type: none"> Start recording from Ready (Buffering) mode = Double-press End recording, enter Ready (Buffering) mode = Press and hold for 3 seconds Activate Pairing mode = Press and hold with Program button for 3 seconds
Volume ▲	<ul style="list-style-type: none"> Increase speaker volume by one level = Single press Turn off or on lights = Press and hold for 3 seconds Exit Stealth mode = Press and hold for 3 seconds*
Volume ▼	<ul style="list-style-type: none"> Decrease speaker volume by one level = Single press Enter Stealth mode = Press and hold for 3 seconds Exit Stealth mode = Press and hold for 3 seconds*
Select	<ul style="list-style-type: none"> Add marker while recording = Single-press Activate Display backlight for 2 seconds = Two presses Enter Mute mode or exit Mute mode while recording = Press and hold for 3 seconds
Program	<ul style="list-style-type: none"> Activate Pairing mode = Press and hold with Event button for 3 seconds

* The camera remembers the previous volume and light settings when exiting Stealth mode.

Camera Display

The display is divided into a Status Bar and Activity Area.



In the Field

Status Bar Icon	Description	Status Bar Icon	Description
	Battery capacity		Battery capacity
	Camera paired		Charging
	Lights off		Connected to Axon Evidence for upload and update
	Stealth mode on		
	Connected to Axon Evidence for live streaming		

In an Axon Dock

Activity Area Icon	Description	Activity Area Icon	Description
	Ready (Buffering) mode		Upload in progress
	Microphone off (mute mode)		Updating firmware or settings
	Recording		Assigned officer ID (shown when no other activity is in progress)
	Recording started by Axon Signal broadcast		
	Axon Aware Live Streaming		
	Recording started by gunshot detection		

Notifications

The Axon Body 3 camera emits sounds called audio prompts to notify you of the device status. The audio prompts are accompanied by a vibration that matches the audio. These prompts usually occur after you perform an action with the body camera.

Operating Mode or Action	Audio Notification	Haptic Notification (vibration)
Powering on	Two short rising-pitch tones	One - long duration
Powering off	Three short lowering-pitch tones	One - long duration
Start recording	Two short tones	Two - short duration
Recording reminder	Two short tones every 2 minutes	Two - short duration every 2 minutes
Stop recording, return to ready	One long tone	One - long duration
Volume up or down	One short tone at new volume	One - short duration
Axon Aware Live Streaming connected	Three short rising-pitch tones	None
Enter or Exit Mute mode (microphone off)	None	Two - long duration
Turn lights on or off	None	Two - short duration
Exit Stealth mode	None	One - long duration
Event marker captured	None	One - short duration
Low battery notifications: 25% battery capacity and every 5% decrease.	Four quick high-pitch tones	One - long duration
Camera enters Pairing mode	Three short rising-pitch tones	Three - short duration

LED Status

Operation LED

The operation LED shows information about the camera's current operating mode.

Operating Mode	Operation LED
Recording	Blinking red
Ready (Buffering)	Blinking green
Booting up/powering down	Solid red
Mute enabled or Pairing mode	Blinking blue
Axon Aware Live Streaming	Blinking purple
Low battery or error	Blinking yellow
Firmware update (while in an Axon Dock)	Solid white

Triad LED (in the field)

In the field, the Triad LED on the front of the camera can be configured to display the camera's operating mode.

Operating Mode	Triad LED
Ready (Buffering)	Blinking green
Recording	Blinking red

Triad LED (in an Axon Dock)

In the Axon Dock, the Triad LED on the front of the camera shows the device status and battery capacity. See the camera display for additional information.

Device Status	Triad LED
Battery is fully charged (> 98%)	Solid green
Battery capacity is at mid-range (33% to 97%)	Solid yellow
Battery capacity is at low-range (< 33%)	Solid red
Uploading data, downloading data, or applying device settings	Spinning yellow (cycling yellow on each Triad LED)
Applying a firmware update - DO NOT remove camera from Axon Dock	Spinning white (cycling white on each Triad LED)
Possible network error. Refer to Troubleshooting section of the Axon Body 3 User Manual or go to help.axon.com .	Blinking red, yellow and green (cycling all colors)
Device error. Refer to device page in Axon Evidence.	Blinking red

Care and Maintenance

This section provides information on cleaning, charging, storage, and replacing the battery for your axon Body 3 camera.

Cleaning the Camera

Use a soft, damp cloth to clean the surface of the Axon Body 3 camera. Do not use harsh cleaners or solvents. You may moisten the cloth with isopropyl alcohol.

Do not immerse the Axon Body 3 camera in water or cleaning solutions.

If the Axon Body 3 camera lens becomes dirty, use a lens blower brush to clean it and then wipe it with a soft cloth if necessary.

If the Axon Body 3 camera display becomes dirty, clean the display is with soapy water and then dry with a soft cloth.

Do not use ammonia-based or similar type window cleaners on the camera lens or camera display.

Do not place the lens under running water or apply jets of water to the camera lens.

Ensure the Axon Body 3 microphone openings are clean and clear of any debris.

Charging the Battery

A fully charged camera battery should provide enough power for approximately 12 hours of normal operation. Recharging a battery after a 12-hour use can take up to 5 hours if you are recharging your Axon Body 3 camera from Axon Dock.

If the battery depletes significantly during use, you will hear 3 quick tones and a long vibration. This message indicates that approximately 25 percent of the battery capacity remains. The message is repeated after every 5 percent decrease in battery capacity.

Always recharge a depleted battery as soon as reasonably possible using an Axon Dock.

Camera Internal Clock

Axon Body 3 cameras should be regularly placed in an Axon Dock to update the camera's internal clock.

Camera Storage

Axon on-officer cameras should not be stored in environments where the temperature is likely to exceed 95 °F (35 °C) (such as under direct sunlight, near heaters, or in a vehicle in extremely hot weather) or exposed to temperatures below –4 °F (–20 °C).

Replacing the Battery

Before you begin, ensure you have the required supplies:



- Lint-free wipes
- T5 Torx driver
- Axon Body 3 with a dead battery
- Replacement Axon Body 3 camera battery

Ensure the camera is powered off.

1. Remove all 6 screws from the back panel of the Axon Body 3 Camera.



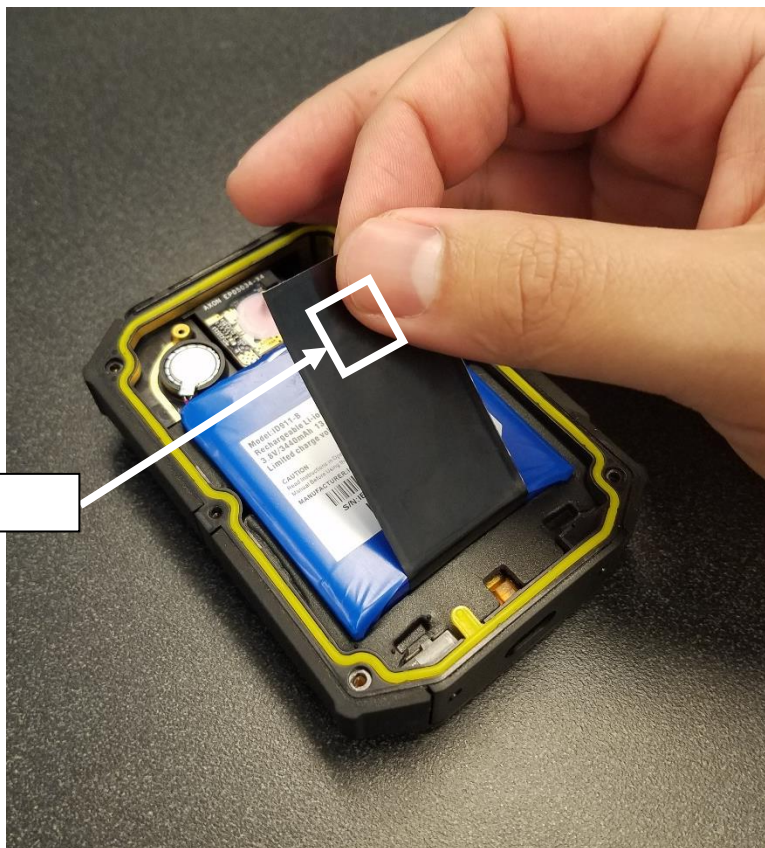
2. Remove the back cover.

Be careful to not smear the thermal paste (shown by the white arrows).



3. Gently peel the black PGS layer off the battery. PGS layer is attached to the battery with a small adhesive patch near the top.

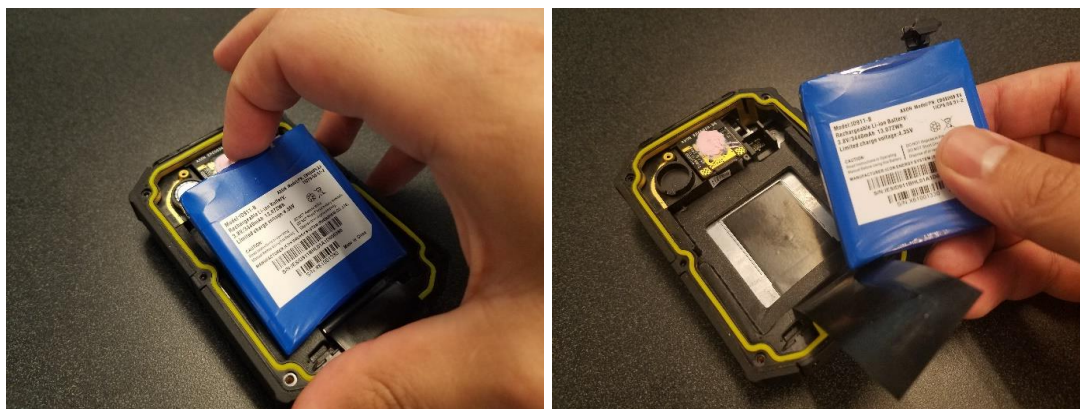
Adhesive patch location



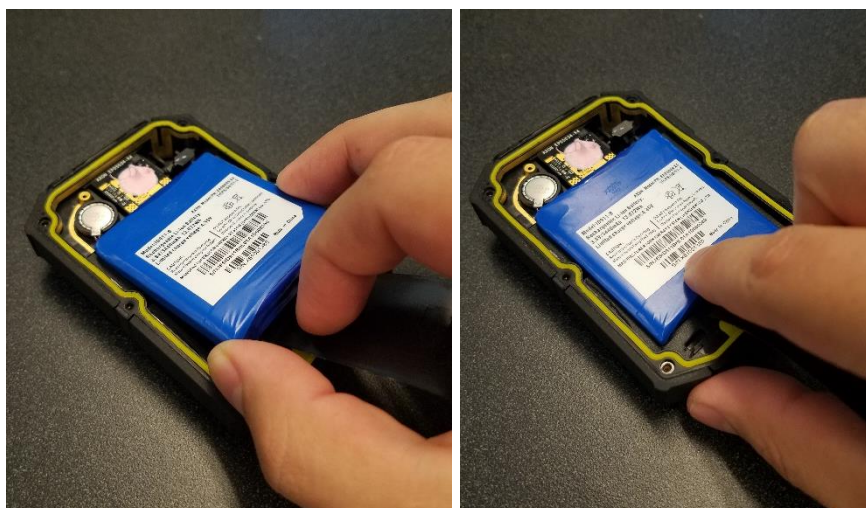
4. Disconnect the battery connector from the main board by lifting it up.



5. Lift battery from top edge to remove from camera.

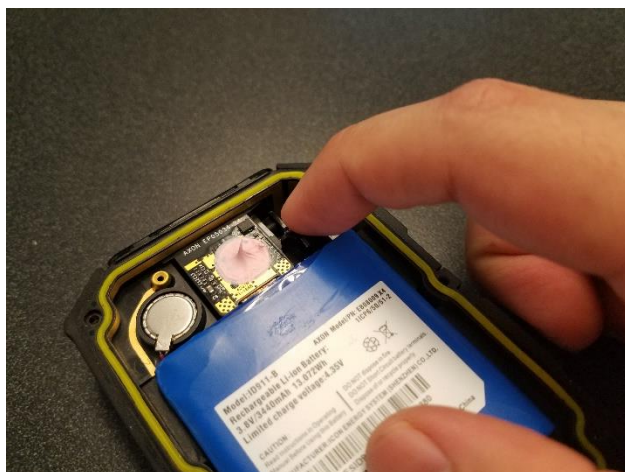


6. Insert top edge of replacement battery into camera and press down bottom edge to secure.

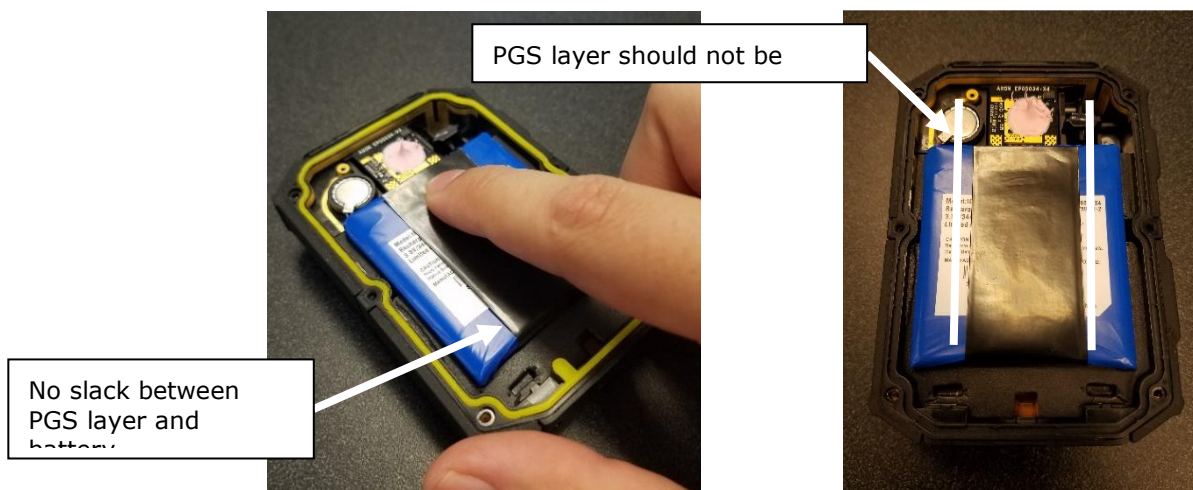


7. Carefully align and press down on battery connector to connect to main board.

Caution: Make sure connector is properly seated before pushing down to avoid damaging internal pins.



8. Re-attach black PGS layer to top of battery by pressing down on adhesive patch. Make sure the PGS layer is pulled taut and not tilted left or right.



9. Inspect yellow gasket to ensure it is properly seated in the groove around the perimeter of the camera.



10. Gently replace back cover and tighten all 6 screws starting with the 2 center screws.

Screws should be tightened to 2.5 in-lbs to ensure a water tight seal.



11. Dispose of the old battery in accordance with your local regulations regarding battery disposal.



Troubleshooting and Other Information

Go to help.axon.com and refer to the Axon Body 3 troubleshooting information.

If you are having trouble with your Axon Body 3 camera, turn the camera off and turn it on again to see if the issue clears.

In situations where the camera is in a frozen state and does not respond to button presses, you can initiate a hard reset of the camera as follows:

- Press and hold the Power and Volume ▼ buttons for approximately 12 seconds until you feel one short vibration. The camera will restart

If the previous actions do not resolve the difficulties, contact Axon Customer Service for additional support.

Technical Support

Visit www.axon.com and view the Support options or call 1-800-978-2737.

Warranty Policy

Axon Enterprise warranty provisions are applicable on all Axon Body 3 system products. See Axon Enterprise's website, www.axon.com, for detailed warranty information.

Warnings

For a full list of the warning associated with this product, see www.axon.com.

Radio Waves

An Axon Body 3 system transmission is in the frequency ranges of 2402 – 2480 MHz, 2412 – 2462 MHz, 5180 – 5210 MHz, 5745 – 5825 MHz, 699 – 716 MHz, 704 – 716 MHz, 777 – 787 MHz, 788 – 798 MHz, 824 – 849 MHz, 826.4 – 846.6 MHz, 1710 – 1755 MHz, 1710 – 1780 MHz, 1712.4 – 1752.6 MHz, 1850 – 1910 MHz, 1852.4 – 1907.6 MHz.

Changes or modifications to the equipment not expressly approved by the manufacturer could void the product warranty and the user's authority to operate the equipment.

Your wireless device is a radio transmitter and receiver. It is designed and manufactured not to exceed the emission limits for exposure to radio frequency (RF) energy set by the Federal Communications Commission (FCC) of the U.S. Government. These limits are part of comprehensive guidelines and establish permitted levels of RF energy for the general population. The guidelines are based on standards that were developed by independent scientific organizations through periodic and thorough evaluation of scientific studies. The standards include a substantial safety margin designed to assure the safety of all persons, regardless of age and health. Before a device model is available for sale to the public, it must be tested and certified to the FCC that it does not exceed the limit established by the government-adopted requirement for safe exposure. This equipment has been tested and found to comply with the limits for a Class B digital device, pursuant to part 15 of the FCC Rules. These limits are designed to provide reasonable protection against harmful interference in a residential installation. This equipment generates, uses and can radiate radio frequency energy and, if not installed and used in accordance with the instructions, may cause harmful interference to radio communications. However, there is no guarantee that interference will not occur in a particular installation. If this equipment does cause harmful interference to radio or television reception, which can be determined by turning the equipment off and on, the user is encouraged to try to correct the interference by one or more of the following measures:

- Reorient or relocate the receiving antenna.
- Increase the separation between the equipment and receiver.
- Connect the equipment into an outlet on a circuit different from that to which the receiver is connected.
- Consult Axon Technical Support for help.

This device complies with part 15 of the FCC Rules. Operation is subject to the following two conditions: (1) This device may not cause harmful interference, and (2) this device must accept any interference received, including interference that may cause undesired operation.

This device complies with Industry Canada licence-exempt RSS standard(s). Operation is subject to the following two conditions: (1) this device may not cause interference, and (2) this device must accept any interference, including interference that may cause undesired operation of the device.

Le présent appareil est conforme aux CNR d'Industrie Canada applicables aux appareils radio exempts de licence. L'exploitation est autorisée aux deux conditions suivantes : (1) l'appareil ne doit pas produire de brouillage, et (2) l'utilisateur de l'appareil doit accepter tout brouillage radioélectrique subi, même si le brouillage est susceptible d'en compromettre le fonctionnement.

This equipment complies with the IC RSS-102 radiation exposure limits set forth for an uncontrolled environment.

Énoncé d'exposition aux rayonnements: Cet équipement est conforme aux limites d'exposition aux rayonnements ioniques RSS-102 Pour un environnement incontrôlé.

Section 8.4 of RSS-GEN

This Device complies with Industry Canada License-exempt RSS standard(s). Operation is subject to the following two conditions: 1) this device may not cause interference, and 2) this device must accept any interference, including interference that may cause undesired operation of the device.

Cet appareil est conforme aux normes d'exemption de licence RSS d'Industrie Canada. Son utilisation est soumise aux conditions suivantes : 1) cet appareil ne doit pas causer de brouillage, et 2) doit accepter tout brouillage, y compris le brouillage pouvant entraîner un fonctionnement indésirable.

Section 8.3 of RSS-GEN

Under Industry Canada regulations, this radio transmitter may only operate using an antenna of a type and maximum (or lesser) gain approved for the transmitter by Industry Canada. To reduce potential radio interference to other users, the antenna type and its gain should be chosen so that the equivalent isotropically radiated power (e.i.r.p.) is not greater than necessary for successful communication.

Conformément à la réglementation d'Industrie Canada, le présent émetteur radio ne peut fonctionner qu'au moyen d'une antenne d'un seul type et d'un gain maximal (ou inférieur) approuvé pour l'émetteur par Industrie Canada. Dans le but de réduire les risques de brouillage radioélectrique pour les autres utilisateurs, il faut choisir le type d'antenne et son gain de sorte que la puissance isotrope rayonnée équivalente (p.i.r.e.) ne dépasse pas celle requise pour établir une communication satisfaisante.

THIS MODEL DEVICE MEETS THE GOVERNMENT'S REQUIREMENTS FOR EXPOSURE TO RADIO WAVES

Compliance Marks



You can view the e-labeling information for the Axon Body 3 camera on the camera display using the following steps:

1. Turn on you Axon Body 3 by pressing the **Power** button.

READY is shown on the camera display when the camera is on.

2. Press **Power** button + **Program** button at the same time.
3. The camera display shows three options: About, Cellular, and Legal.
4. Use the **Volume ▼** or **Volume ▲** button to highlight Legal, and then press the **Select** button.
5. The camera display will automatically scroll the following information. Optionally you can use the **Volume ▼** or **Volume ▲** button to manually scroll through the information.
 - Model: AX1023:
 - FCC ID: X4GS01200
 - IC: 8803A-S01200
 - Contains FCC ID: X4GAB7610
 - Contains IC: 8803A-AB7610
6. Press the **Event** button to return to the normal camera display.