

User Manual

Tablet PC

TW101

FCC ID: 2AEHNAZ15CN

Azpen Shenzhen Mingtel Digital Technology Co., Ltd

2nd Floor Bld.9 Detai Industrial District, No.460

Daland Huarong Rd. Longhua New District

Shenzhen, China

Warning :

This device complies with Part 15 of the FCC Rules. Operation is subject to the following two conditions: (1) this device may not cause harmful interference, and (2) this device must accept any interference received, including interference that may cause undesired operation. changes or modifications not expressly approved by the party responsible for compliance could void the user's authority to operate the equipment.

NOTE: This equipment has been tested and found to comply with the limits for a

Class B digital device, pursuant to Part 15 of the FCC Rules. These limits are

designed to provide reasonable protection against harmful interference in a

residential installation. This equipment generates, uses and can radiate radio

frequency energy and, if not installed and used in accordance with the instructions, may cause harmful interference to radio communications.

However,

there is no guarantee that interference will not occur in a particular installation.

If this equipment does cause harmful interference to radio or television reception,

which can be determined by turning the equipment off and on, the user is

encouraged to try to correct the interference by one or more of the following

measures:

- Reorient or relocate the receiving antenna.
- Increase the separation between the equipment and receiver.
- Connect the equipment into an outlet on a circuit different from that to which the receiver is connected.
- Consult the dealer or an experienced radio/TV technician for help.

NOTE: This device and its antenna(s) must not be co-located or operation in conjunction with any other antenna or transmitter.

Changes or modifications to this unit not expressly approved by the party responsible for compliance could void the user's authority to operate the equipment.

RF Exposure Information:

The SAR limit of USA (FCC) is 1.6 W/kg averaged over one gram of tissue. Device Types TW101 (FCC ID: 2AEHNAZ15CN) has also been tested against this SAR limit.

The highest SAR value reported under this standard during product certification for use when properly worn on the body is 0.917 W/kg. This device was tested for typical body - worn operations with the back of the handset kept 0mm from the body.

The use of belt clips, holsters and similar accessories should not contain metallic components in its assembly.

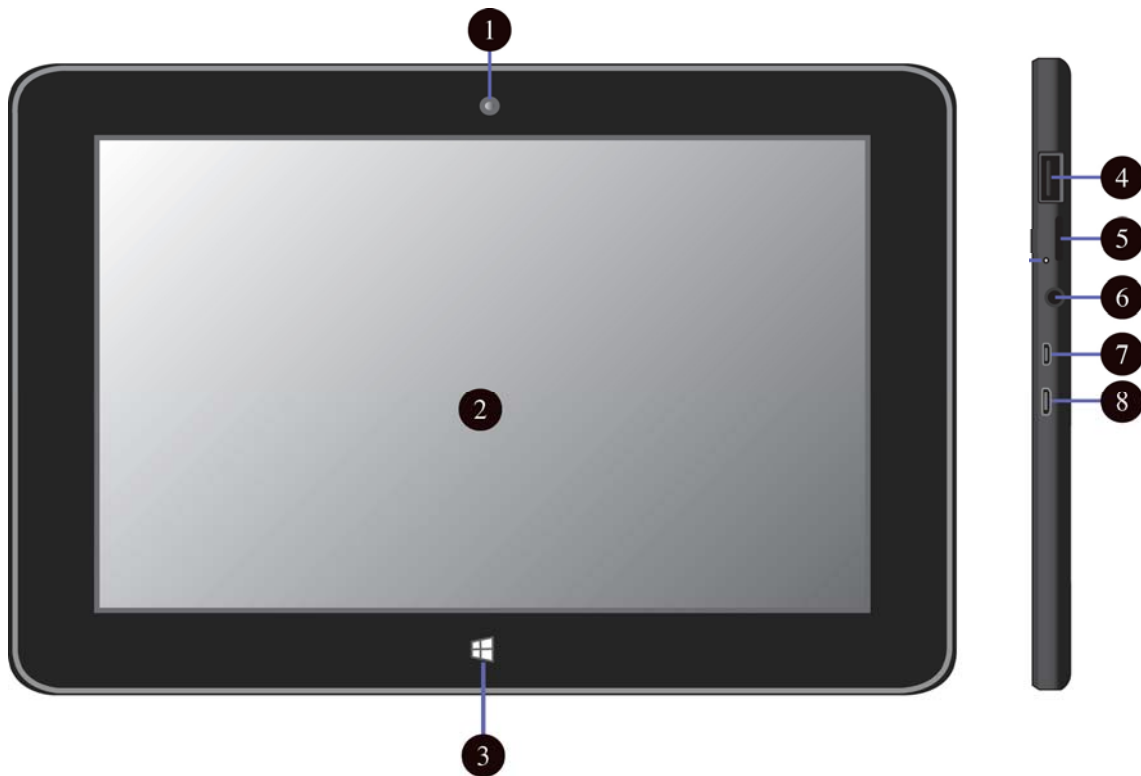
The use of accessories that do not satisfy these requirements may not comply with FCC RF exposure requirements, and should be avoided.

Package contents

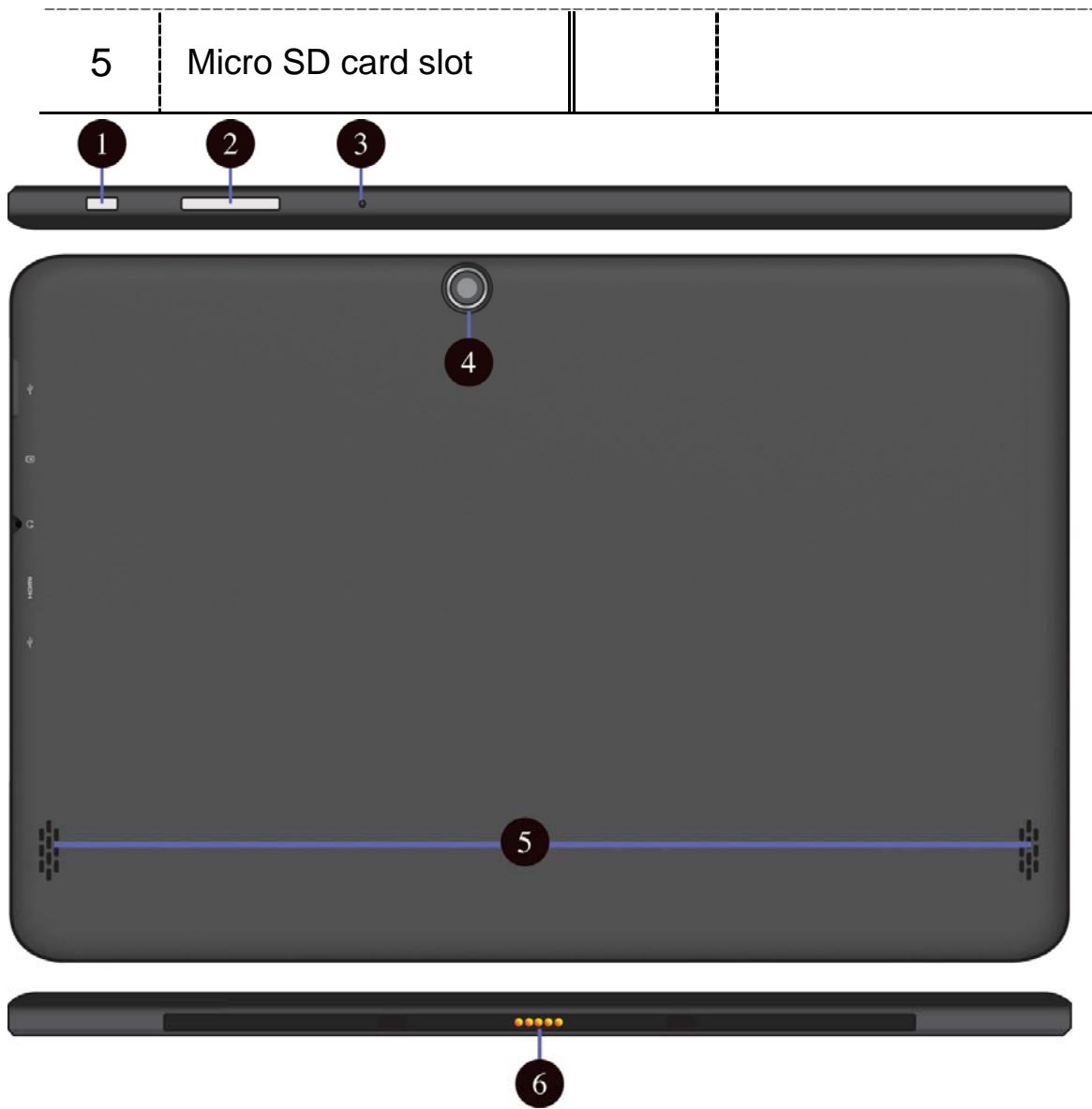
If any of the items is missing or damaged, please contact your dealer immediately:

- One Tablet
- One AC adapter
- One USB cable
- This guide

Tablet layout



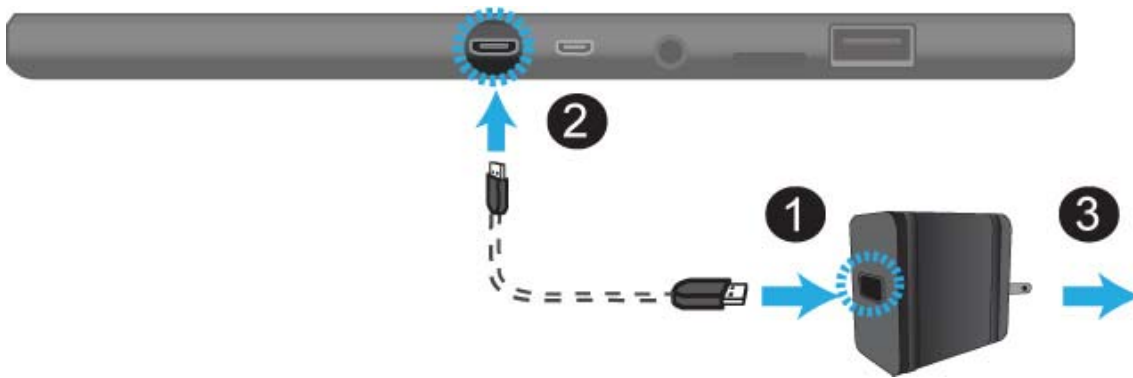
No.	Name	No.	Name
1	Front facing camera	6	Headphone plug
2	Touchscreen	7	Micro HDMI port
3	Windows button	8	Micro USB 2.0 DC IN
4	USB 3.0 port		



No.	Name	No.	Name
1	Power Button	4	Rear facing camera
2	Volume up/down	5	Speaker
3	Microphone	6	Docking port

Charging your tablet

If your tablet is just being unpacked from the box, you need to charge the tablet first. It will take around 4 to 5 hours to be fully charged.

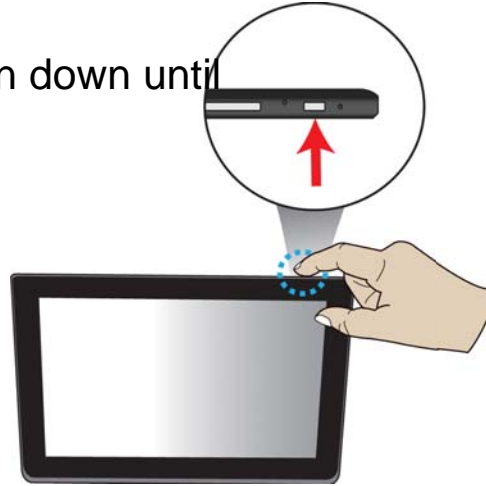


1. Plug the USB head of the cable into the adapter.
2. Plug the micro-USB head of the cable into the micro-USB port on your tablet.
3. Plug the adapter into a wall-socket.

Powering ON/OFF your tablet

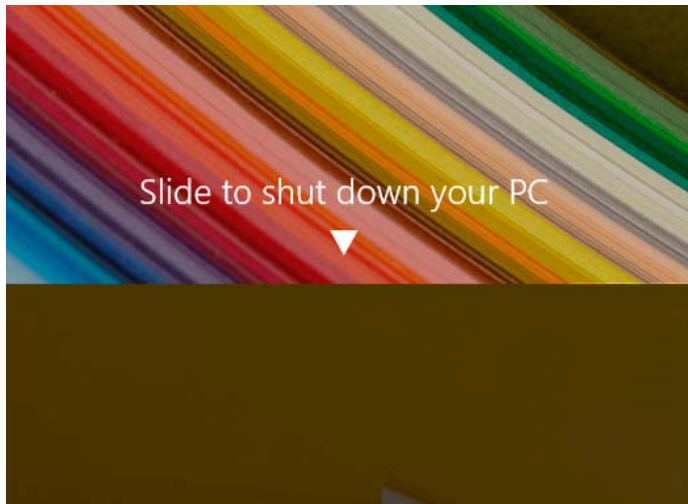
To power on your tablet

Press and hold the power button down until the screen turn on.



To power off your tablet

Press and hold the power button for at least four seconds, and you will see an instruction appears in the middle of the screen, which is as shown below.



Slide your finger on the screen downward, and the system will power off itself.

Inserting a storage card

Your tablet supports micro-SD cards with storage space 32G (Max). You can insert the micro SD card and pull it out without powering down the tablet. To do so, follow the steps below.



Install your Micro SD Card

1. Hold your tablet with front side up.
2. Insert your micro SD card in the direction as shown.

Remove your Micro SD Card

1. Push and release the micro SD card. This will unlock the card.
2. Pull out the micro SD card.

Specifications

Processor	<ul style="list-style-type: none">● Intel Bay Trail-T Z3735 F● Quad core (4C/4T)● 1.33 GHz (Burst to 1.83GHz)● 2MB L2 Cache
Memory	<ul style="list-style-type: none">● DDR3L- 1333● Default 2 GB
Storage	<ul style="list-style-type: none">● Single eMMC up to v5.0● Default 32GB
Wireless	<ul style="list-style-type: none">● Wi-Fi 802.11 b/g/n +BT4.0
Touchscreen	<ul style="list-style-type: none">● 10.1-inch 800 x 1280 LCD● Support 10-points multi-touch
Cameras	<ul style="list-style-type: none">● Front HD camera: 2.0 M● Rear HD camera: 2.0M
Battery	<ul style="list-style-type: none">● 2Cell1S2P● Li-polymer● 7600mAh
Input/Output	<ul style="list-style-type: none">● 1 x micro-USB 2.0port (Type B)● 1 x USB 2.0 port (Type A)● 1 x Mic/head phone jack combo● 1 x Micro-HDMI 1.4a● 1 x micro-SD card slot (Max 32G)● 1 x Digital MIC● 1 x Pogo Pin connector (5-pin)

Speaker&Mic	<ul style="list-style-type: none"> ● Build-in Speaker x 2 ● Internal Digital MIC x 1
AC-Adapter	<ul style="list-style-type: none"> ● DC Output: 5V/2A/10 Watt ● Input Voltage: 100 ~ 240VAC ● Input Frequency: 47 ~ 63Hz
Dimension (mm)	<ul style="list-style-type: none"> ● 268 (W) x 179(H) x 10.75 (D)
Net Weight	<ul style="list-style-type: none"> ● < 650 g (w/o adapter& cable)