



AW-GA800BT 802.11 b/g USB Wireless Module

User Guide

COPYRIGHT

AzureWave Technologies, Inc. All rights reserved. No part of this document may be reproduced, transmitted, transcribed, stored in a retrieval system, or translated into any language in any form or by any means without the written permission of AzureWave Technologies, Inc.

DISCLAIMER

AzureWave provides this document “as is”, without warranty of any kind, neither expressed nor implied, including, but not limited to, the particular purpose. AzureWave may make improvements and/or changes in this document or in the product described in this document at any time. This document could include technical inaccuracies or typographical errors.

TRADEMARKS

AzureWave is a trademark of AzureWave Technologies, Inc. Other names mentioned in this document are trademarks/registered trademarks of their respective owners.

USING THIS DOCUMENT

This document provides detailed user guidelines to provide AzureWave 802.11 b/g USB WLAN Module operation and setting-up. Though every effort has been made to assure that this document is current and accurate, more information may have become available subsequent to the production of this guide. In that event, please contact your AzureWave representative for additional information that may help in the development process.

Contents

Safety statements	2-1
About this guide.....	2-1
AW-GA800BT 802.11 b/g USB WLAN Module specification summary	2-2
Chapter 1 Product Information.....	2-2
1.1 Product overview	2-2
1.2 Features.....	2-2
1.3 LED and antenna port	錯誤! 尚未定義書籤。
1.4 Supported network setup	2-3
1.4.1 Ad-Hoc mode.....	2-3
1.4.2 Infrastructure mode	2-4
1.4.3 Software access point (Soft AP)	2-5
Chapter 2 Installation.....	2-1
2.1 System requirements	2-1
2.2 Hardware Installation.....	2-1
Chapter 3 Wi-Set Wizard	3-2
3.1 Launch Wi-Set Wizard	3-2
3.2 Wi-Setup Wizard Steps.....	3-4
3.3 Station Mode Configuration	3-4
3.3.1 Configure Infrastructure type network.....	3-5
3.3.2 Build Ad-Hoc networking mode network	3-6
3.4 Build Soft AP network	3-8
3.4.1 Normal User.....	3-8
3.4.2 Advanced User	3-11
Chapter 4 RtWLAN: Wireless LAN Management GUI	4-1
4.1 How to Launch RtWLAN	4-2
4.2 Introduction of Main Window.....	4-2
4.3 Station mode.....	4-6
4.3.1 Infrastructure and Ad-Hoc	4-6
4.4 AP mode	4-11
4.5 Windows Zero Configuration.....	4-14
4.5.1 Swap from RtWLAN to Windows Zero Configuration	4-14
4.5.2 Rollback from Windows Zero Configuration to RtWLAN	4-15
Appendix A: Mapping of country and channel plan.....	4-1
Appendix B: Q&A.....	4-4
Appendix C: Release History.....	4-5

Safety statements

FCC Radiation Exposure Statement:

This equipment complies with FCC radiation exposure limits set forth for an uncontrolled environment. This transmitter must not be co-located or operating in conjunction with any other antenna or transmitter.

About this guide

The user guide contains the information you need to install and configure your AzureWave 802.11 b/g USB WLAN Module.

Guide organization

This guide contains the following chapters:

- | Chapter 1: Product Information
This chapter describes the general functionality, features and configuration modes of AzureWave 802.11 b/g USB WLAN Module.
- | Chapter 2: Installation
It is recommended that users should read this chapter before installing both AzureWave 802.11 b/g USB WLAN Module hardware and software. This chapter presents the systematic installation of AzureWave 802.11 b/g USB WLAN Module and antenna, utilities and driver on the support CD.
- | Chapter 3: **W-Set Wizard**
This chapter shows you the setup of wireless network in your office or home. Follow The step-by-step direction, provided by **Wi-Set** wizard, you can have your own wireless local area network up and running very quickly.
- | Chapter 4: Management **GUI**
This chapter teaches you the proper operations of selected mode from W-Set Wizard. The GUI display network status, connection profiles and network traffic to help you monitor and manage the network configuration.

AzureWave 802.11 b/g USB WLAN Module specification summary

Host system connections

Interface	Fully complies with USB 2.0 or 1.1
USB data transfer rate	USB high speed (480Mbps), and full speed (12Mbps)

Chapter 1 Product Information

1.1 Product overview

Thank you for **choosing** AzureWave 802.11 b/g USB WLAN Module.

The AzureWave 802.11 b/g USB WLAN Module is an easy-to-use wireless local area network (WLAN) adapter which is designed for home or office use. Direct Sequence Spread Spectrum (DSSS), Complementary Code Keying (CCK), and Orthogonal Frequency Division Multiplexing (OFDM) base band processing are implemented to support all IEEE 802.11b, and 802.11g data rates. Differential phase shift keying modulation schemes, DBPSK and DQPSK with data scrambling capability, are available, along with complementary code keying to provide data rates of 1, 2, 5.5, and 11Mbps, with long or short preamble. A high-speed Fast Fourier Transform (FFT)/Inverse Fast Fourier Transform (IFFT) combined with BPSK, QPSK, 16QAM and 64QAM modulation of the individual sub-carriers provides data rates of 6, 9, 12, 18, 24, 36, 48 and 54Mbps, with rate-compatible punctured convolution coding with a coding rate of 1/2, 2/3, and 3/4.

The AzureWave 802.11 b/g USB WLAN Module also supports Wake-On-LAN (WOL) function and remote wake-up giving you the convenience to remote log in from other places to this system.

To provide efficient security to your wireless communication, the hardware-based IEEE 802.11i encryption/decryption engine, including 64-bit/128-bit WEP, TKIP, and AES, supports Wi-Fi alliance WPA and WPA2 security.

With these features and many more, AzureWave 802.11 b/g USB WLAN Module is ready to connect you to the world of wireless communication.

1.2 Features

System requirements

The AzureWave 802.11 b/g USB WLAN Module is an on-board component on ASUS motherboard requiring manual installation. Make sure that your system meets the following requirements.

- | ASUS motherboard with AzureWave 802.11 b/g USB WLAN Module on-board solution
- | Minimum 64MB system memory
- | Operating system
 - Station mode : Windows® 2000/XP/Server 2003, Windows XP/Server 2003 x64
 - AP/wireless bridge mode : Windows® 2000/XP/Server 2003
- | Optical drive for utilities and driver installation

Easy hardware installation

Because the AzureWave 802.11 b/g USB WLAN Module comes embedded in motherboard, no hardware installation is necessary. Just connect the antenna, install the driver and utilities from the motherboard support CD and start wireless communication immediately.

54Mbps speed wireless travel

The AzureWave 802.11 b/g USB WLAN Module provides up to five times more data transmission than IEEE 802.11b standards, and breaks the wireless transmission barrier to speed up the internet connection.

Wi-Set Wizard

Easy-use wireless LAN setup wizard helps you to connect with present wireless network. The step-by-step wizard provides a convenient way to facilitate the complex wireless LAN setup process.

Automatic wireless establishment

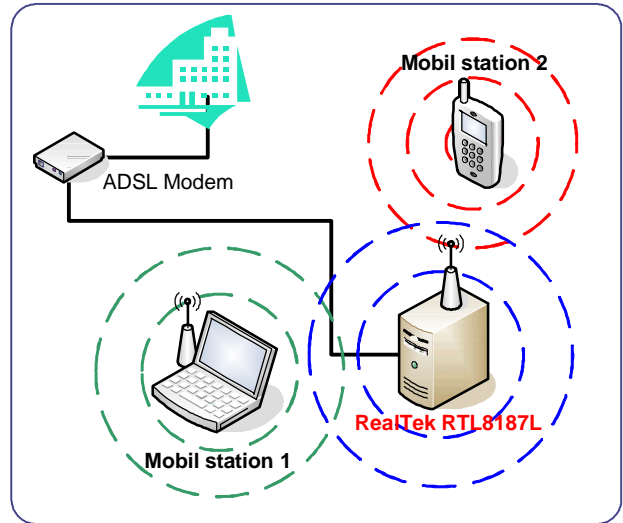
The utility **application** of AzureWaveRTL8187 Wireless LAN USB 2.0 Adapter automatically searches and reports the hot spots around it and the wireless signal quality and WEP capability associated with each hot spot. Then you could connect to the most suitable wireless node

1.3 Supported network setup

You can use AzureWave 802.11 b/g USB WLAN Module in various wireless network configurations. We recommend you to select the most appropriate configuration for your home or office network before setting **it** up.

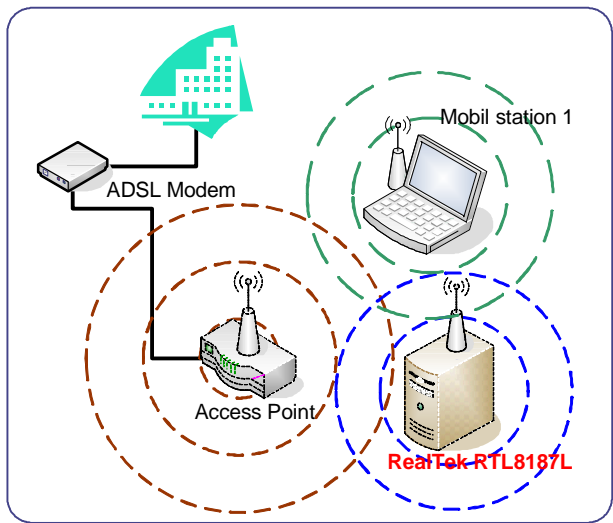
1.3.1 Ad-Hoc mode

Ad-Hoc wireless networks bring together workstations and computers to act as servers to all other users on the network without complex infrastructure, setup or administration. Users on the network can share files, printers. When in ad hoc mode, the AzureWave 802.11 b/g USB WLAN Module connects to another wireless device within its **effective** range and communicates with each other in the same LAN workgroup. Select this configuration when no access point is present in your wireless network.



1.3.2 Infrastructure mode

The biggest difference between infrastructure mode and ad-hoc mode is that it includes an access point. In infrastructure mode, **an** access point establishes the network that provides wireless links in the validating range for clients to communicate with each other or with a wired network to the internet. On an infrastructure network, the access point may manage the bandwidth to maximize utilization. Infrastructure networking has the following advantages over ad-hoc networking:



- 1 Range Extension

Each wireless LAN enabled computer within the range of the access point can communicate with other wireless LAN enabled computers within the valid range of signal from the access point.
- 1 Roaming

A wireless LAN enabled computer can physically move from the operating range of one access point to another without losing connection to the LAN. A quick association “hand-shake” is made between the new access point and the wireless device as the computer traverses from the coverage of one access point to another.
- 1 Wired to wireless LAN connectivity

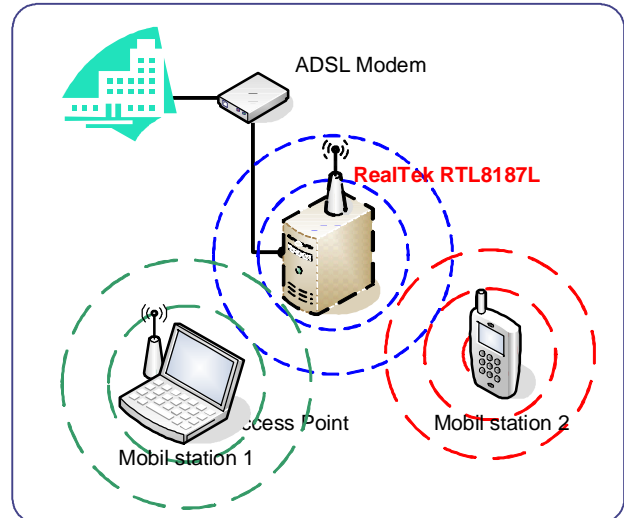
Access point establishes the bridge between wireless LAN and other wired counterparts.

1.3.3 Software access point (Soft AP)

You could configure AzureWave 802.11 b/g USB WLAN Module as a software access point (soft AP). In this mode, the AzureWave 802.11 b/g USB WLAN Module acts as the access point that provides wireless links in the validating range to client stations to the internet.

Your system should satisfy the following two requirements to apply this mode:

- 1 The system you use **already connects to the internet or intranet through another one Ethernet adapter.**
- 1 You are using Windows® 2000, XP or Server2003 operation system



Notice: Windows XP/Server2003 x64 platforms are not supported to have software access point capability.

Chapter 2 Installation

2.1 System requirements

Before installing the AzureWave 802.11 b/g USB WLAN Module, driver and utilities, make sure your system satisfy the following requirements

- | ASUS motherboard with AzureWave 802.11 b/g USB WLAN Module specific slot
- | Intel® Pentium™ 4
- | Minimum 64MB system memory
- | Windows® Operation System
 - Ad-Hoc and infrastructure mode: Windows® 2000, XP and Server 2003
 - Software AP and Wireless Bridge: Windows® XP and Server 2003
- | Optical drive for driver and utilities installation

2.2 Hardware Installation

To complete the hardware installation of AzureWave 802.11 b/g USB WLAN Module, you only need to install the moveable dipolar antenna at the rear of motherboard.

Installing the antenna:

- | Locate the wireless LAN antenna port on the motherboard rear panel.
- | Connect the antenna twist-on connector (female) to the wireless LAN antenna port (male)
- | Place the antenna at an elevated location to enhance your wireless LAN valid coverage.



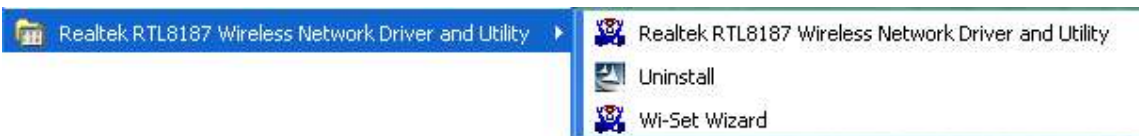
Chapter 3 Wi-Set Wizard

3.1 Launch Wi-Set Wizard

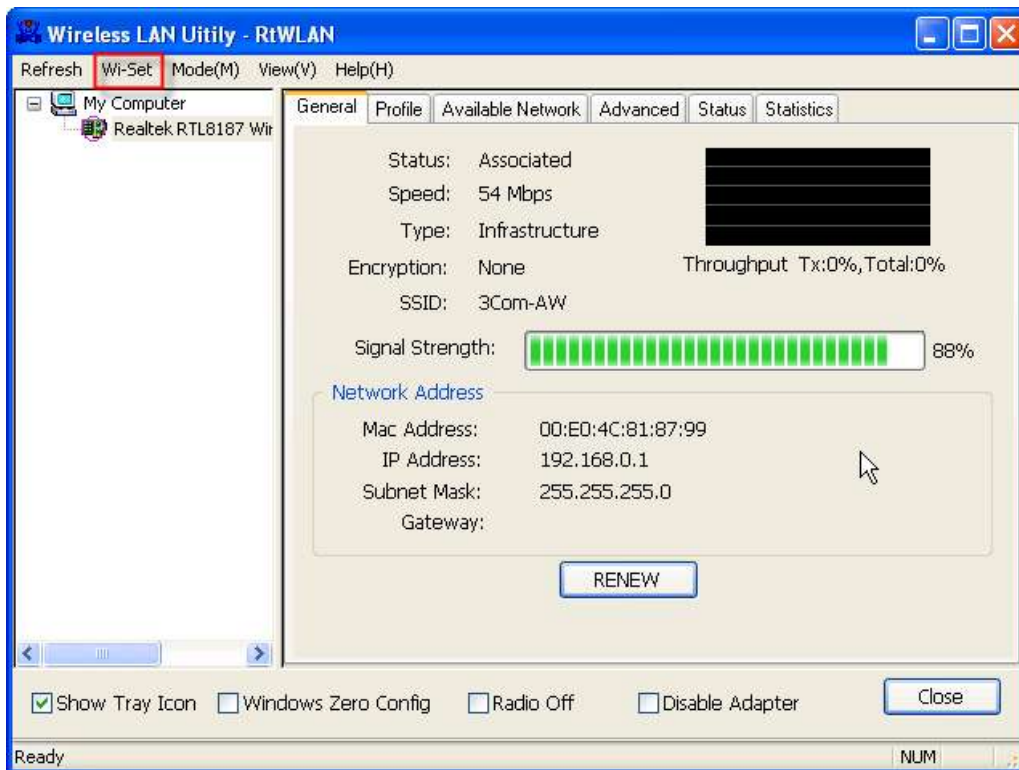
In this section, you will obtain detail instruction in setting wireless configuration by following **Wi-Set Wizard**. Please refer to Chapter 1.4 to understand the network types the AzureWave 802.11 b/g USB WLAN Module supports.

In the first time installation, **Wi-Set Wizard** is executed immediately after installation to help you set the proper wireless configuration.

In addition, you could launch it from either program menu



or **Wireless LAN Management GUI**.



In the following sections, we represent the steps, the convenient and easy wireless set up, in

Wi-Set Wizard.

3.2 Wi-Setup Wizard Steps

Whatever which wireless configuration you would set up, the first scene of Wi-Set Wizard is “**Select Operation Mode**” dialog that shows as right picture. You could select either station or AP mode from the first step.

For Ad-hoc and infrastructure type configuration, you should select Station mode. The software access point configuration could be archived by select AP mode.



- | **Station**

Set the operation mode to be “Station”. Follow steps in section 4.3.

- | **AP**

Set the operation mode to be “Access Point”. Follow steps in section 4.4.

- | **Next**

Go to next step of selected mode.

- | **Cancel**

Give up Wi-Set Wizard. The default wireless configuration will be automatically applied as “Infrastructure” type of Station mode if user won’t set it up here.

3.3 Station Mode Configuration

Two types, infrastructure and ad-hoc types, of station mode are provided here.

- | **Infrastructure**

Configure the wireless as infrastructure type network. Follow steps in 4.3.1 [Build Infrastructure type network.](#)

- | **Ad-Hoc**



Configure the wireless as Ad-Hoc type network. Follow steps in 4.3.2 [Build Ad-Hoc networking mode network](#)

- | **Back**
Go back to previous step – Select Operation Mode.
- | **Next**
Go to next steps of selected type.
- | **Cancel**
Give up Wi-Set Wizard and keep the last configuration.

3.3.1 Configure Infrastructure type network

It is easy to build up infrastructure type network with Wi-Set Wizard. The next step after select infrastructure type network is to select the desired connection.

Select the BSS connection list

Select valid wireless BSS, Infrastructure Basic Service Set, connection nearby your system for connecting. The listed BSS are touchable access point around you. You have to pick one from the list and go to next.



| **SSID list box**

Four fields are shown in the list box to provide access point status.

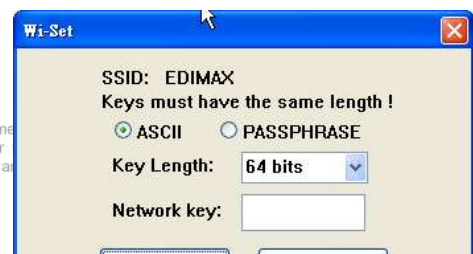
- n SSID: the name of access point
- n Security: the security status of access point. None means security/password is not necessary. WEP means the access point acquire security/password to log in.
- n Channel: the channel this access point applies.
- n Signal: The signal strength; higher mean better.

| **Refresh**

Rescan the IBSS list.

| **Back**

Go back to previous step ~ Select Station Type.



Next

Go to next step of infrastructure type configuration. It is relative the security status of selected access point.

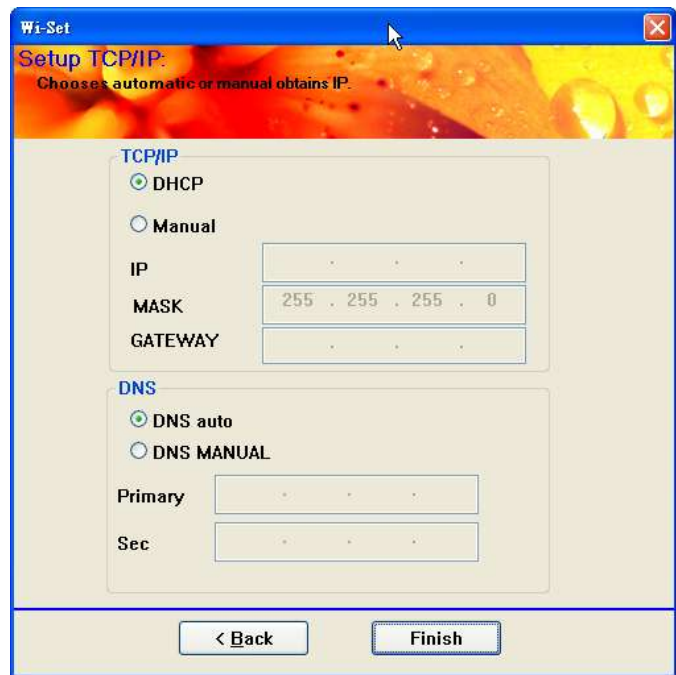
- n None: Setup TCP/IP.
- n WEP: A WEP dialog is pop up before Setup TCP/IP as below picture. You have to input the password/network key to join this access point before setup TCP/IP. The password/network key is defined by the administrator of access point. The invalid network key will stop going to next step.

Cancel

Give up Wi-Set Wizard and keep the last configuration.

Setup TCP/IP

You have to setup the TCP/IP by following the configuration of connect access point. The following setting should match the configuration of access point you join. Please check the setting of it.



Back

Go back to previous step ~ Select the IBSS connection list

Finish

All settings of infrastructure are finished.

3.3.2 Build Ad-Hoc networking mode network

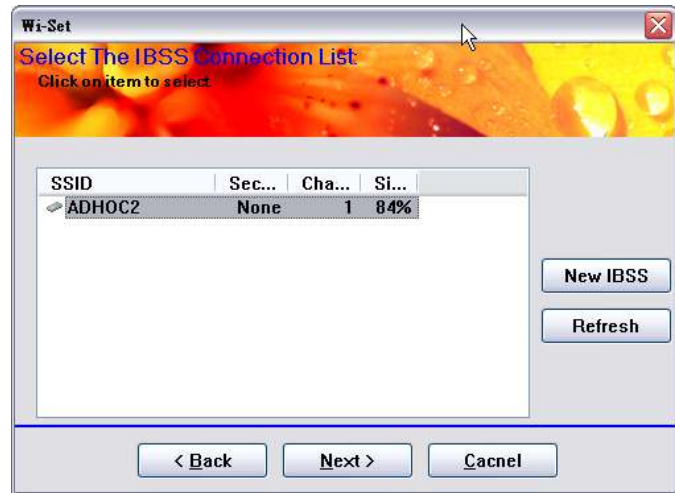
It is easy to build up Ad-Hoc type network with Wi-Set Wizard. The next step after select Ad-Hoc type network is to select the desired connection.

Select The IBSS Connection List

In this step, you could select the present Ad-Hoc station to join. In addition, you could create another Ad-Hoc station by press “New IBSS” button.

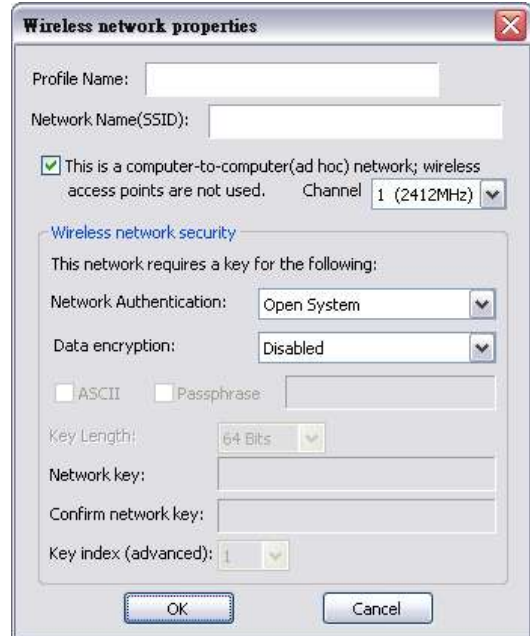
SSID list box

Display all present Ad-Hoc station around this system.



New IBSS

Create a new Ad-Hoc station by the shown-up dialog instead of joining with a present Ad-Hoc node. In this dialog, you could configure network name, applied channel, authentication and encryption rule on this Ad-Hoc node. After creating a new Ad-Hoc node, the steps of build Ad-Hoc network connection is finished.



Refresh

Rescan the Ad-Hoc stations nearby this system.

Back

Go back to previous step ~ Select Station Type.

Next

The wizard will show up the contents of profile. You should set it up to match the security configuration with selected Ad-Hoc station. Then the steps are finished.

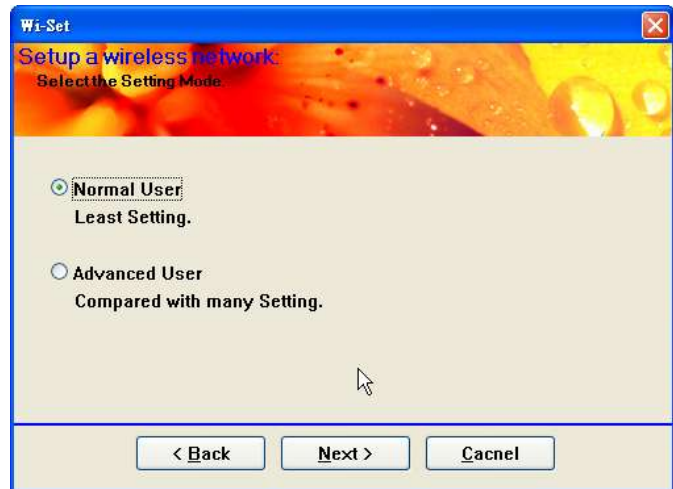
Cancel

Give up Wi-Set Wizard and keep the last configuration.

3.4 Build Soft AP network

Setup a Wireless Network

The setting of Soft AP could settle done by either convenient “**Normal User**” or complex “**Advanced User**” operation.



| **Normal User**

Only basic settings are included in following steps. Less-experience users could apply this kind setup to archive access point setup. Fundamental security setting is included.

| **Advanced User**

You need more security knowledge on wireless network to help you go through following steps. Experienced user could select this kind setup. Advanced security settings are included.

| **Back**

Go back to previous step ~ Select Operation Mode

| **Next**

The next step is dependant on the option user select:

- n Normal User: Please follow steps in 4.4.1 [Normal User](#)
- n Advanced User: Please follow steps in 4.4.2 [Advanced User](#)

| **Cancel**

Give up current Wi-Set Wizard setup and roll back to previous configuration.

3.4.1 Normal User

For normal user mode, the basic security function only request two types network/password key to provide WEP encryption.

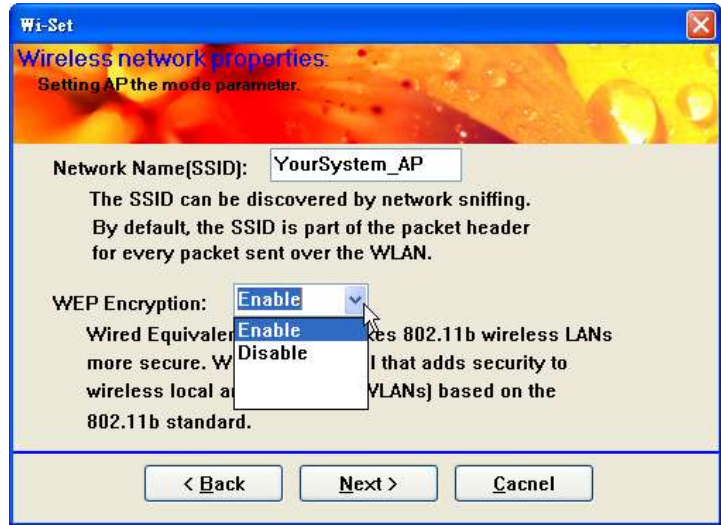
Wireless Network Properties

Network Name (SSID)

The service serve identify of this access point. The length of the self-naming does not exceed 32 characters.

WEP Encryption

- n Enable: The joined wireless station should have same network/password key with this access point.
- n Disable: no network/password key is required for joined wireless station.



Back

Back to previous step ~ Setup a Wireless Network

Next

The next step is dependant on the decision of WEP to be either Enable or Disable.

- n WEP Enable: You should prepare network/password key for WEP. Go to Wireless Network Security.
- n WEP Disable: The access point is set as an opened hot-spot. Anyone could join this access point and connect to internet.

Cancel

Give up current Wi-Set Wizard setup and roll back to previous configuration.

Wireless Network Security

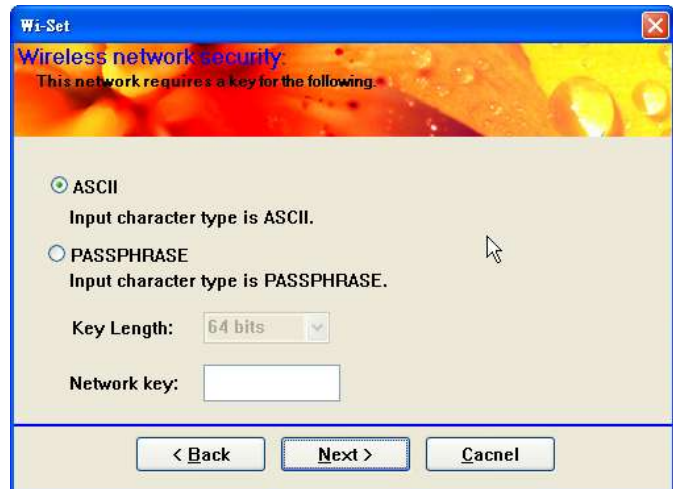
Two types pass key, ASCII and Passphrase, perform security with different level.

ASCII

You should provide either 5 or 8 ASCII characters on **Network key** edit box.

PASSPHRASE

You could input words on **Network Key** edit box.



- n 64 bits: The generated pass key is 64-bits to be company with data packets.
- n 128 bits: The generated pass key is 128-bits to be company with data packets.

Back

Go back to previous step ~ Wireless Network Properties

Next

Go to next step ~ Show Setting Information

Cancel

Give up current Wi-Set Wizard setup and roll back to previous configuration.

Show Setting Information

Back

If you do not satisfy with current setting, you could go back to previous step ~ Wireless Network Security

Next

Confirm the current setting and go to next step ~ Finish.

Cancel

Give up current Wi-Set Wizard setup and roll back to previous configuration.

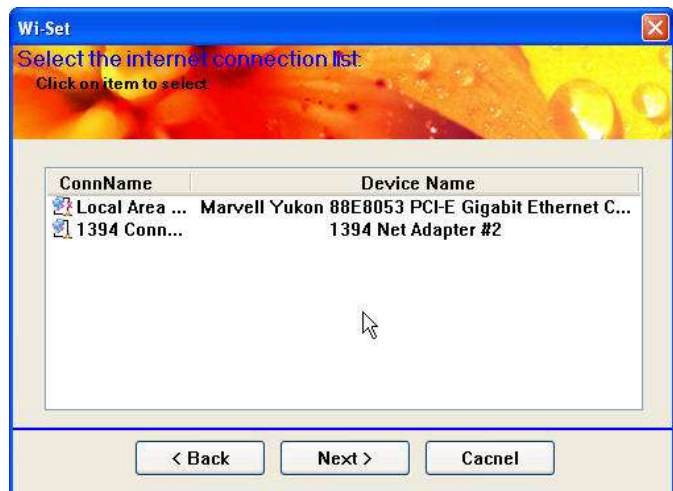


Select the Internet Connection List

This step only shows with multiple network connection system. If there is only one internet connection available, this step is discarded. In this step, you have to select one network connection from the list box. This network connection should be configured to connect internet.

Network List Box

In the list box, you could see all



network connection this system provides. You have to pick one from the list.

Back

Go back to previous step ~ Show Setting Information.

Next

Go to next step, Finish, while the internet connection is selected.

If the status of selected network connection is disconnected, a warning dialog will pop up to inform you that.

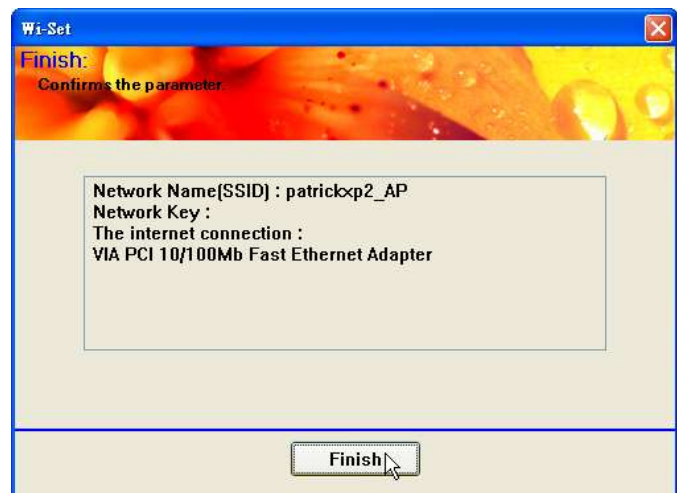
Cancel

Give up current Wi-Set Wizard setup and roll back to previous configuration.

Finish

Finish

Press finish button to close Wi-Set wizard. The wireless configuration is going to be applied within few seconds.



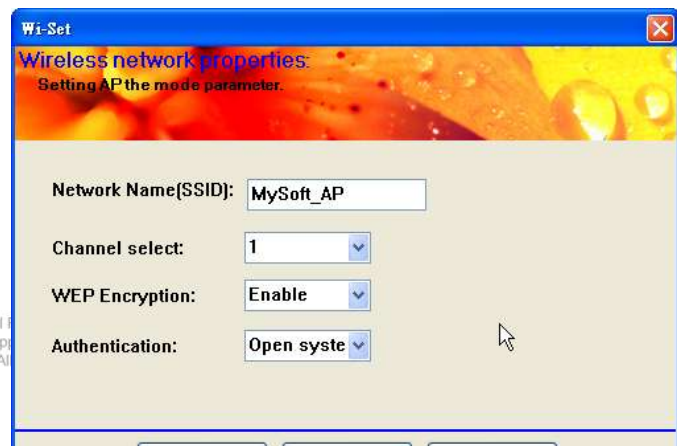
3.4.2 Advanced User

The steps of advanced user provide more detail configuration including channel and authentication

Wireless Network Properties

In this step, you could assign the channel number and authentication mode for the access point.

If the setting of WEP to be “Disable” and



Authentication to be “Open system”, then this access point is opened for free join.

Network Name (SSID)

The service serve identify of this access point. The length of the self-naming does not exceed 32 characters.

Channel select

You could pick one channel from 1 to 11.

WEP Encryption

An encryption system prevents eavesdropping on wireless network traffic.

- n Enable: The joined wireless station should have same network/password key with this access point.

- n Disable: no network/password key is required for joined wireless station.

Authentication

The next generation of Wi-Fi security, Wi-Fi Protected Access, or WPA, will use authentication to verify whether users have access to a particular wireless network.

- n Open system: This access point is without authentication protection with user.

- n Share key: Any station would join this access point should pass with key same as the setting on access point.

Back

Go back to previous step ~ Setup a Wireless Network.

Next

Go to next step. It depends on the setting of WEP and Authentication.

Authentication	Open system	Shared key	WPA-PSK
Encryption	WLAN Security		
WEP	Show Network Setting		n/a
WEP(Disable)			

Cancel

Give up current Wi-Set Wizard setup and roll back to previous configuration.

Wireless Network Security

Two types pass key, ASCII and Passphrase, perform security with different level.

ASCII

You should provide either 5 or 8 ASCII characters on **Network key** edit box.

PASSPHRASE

You could input words on **Network Key** edit box.

- n 64 bits: The generated pass key is 64-bits to be company with data packets.
- n 128 bits: The generated pass key is 128-bits to be company with data packets.

Back

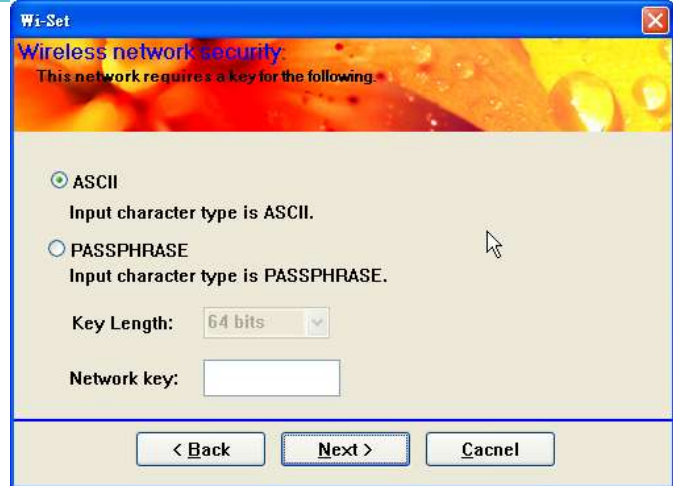
Go back to previous step ~ Wireless Network Properties

Next

Go to next step ~ Show Setting Information

Cancel

Give up current Wi-Set Wizard setup and roll back to previous configuration.



Show Setting Information

Back

If you do not satisfy with current setting, you could go back to previous step ~ Wireless Network Security

Next

Confirm the current setting and go to next step ~ Finish.

Cancel

Give up current Wi-Set Wizard setup and roll back to previous configuration.

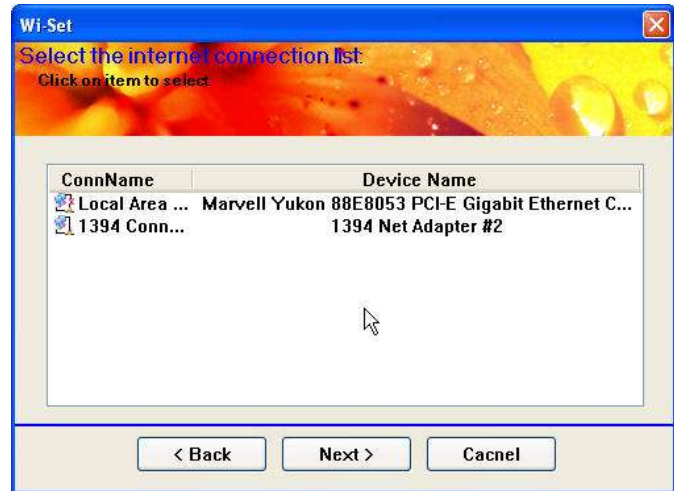


Select the Internet Connection List

This step only shows with multiple network connection system. If there is only one internet connection available, this step is discarded. In this step, you have to select one network connection from the list box. This network connection should be configured to connect internet.

Network List Box

In the list box, you could see all network connection this system provides. You have to pick one from the list.



Back

Go back to previous step ~ Show Setting Information.

Next

Go to next step, Finish, while the internet connection is selected.

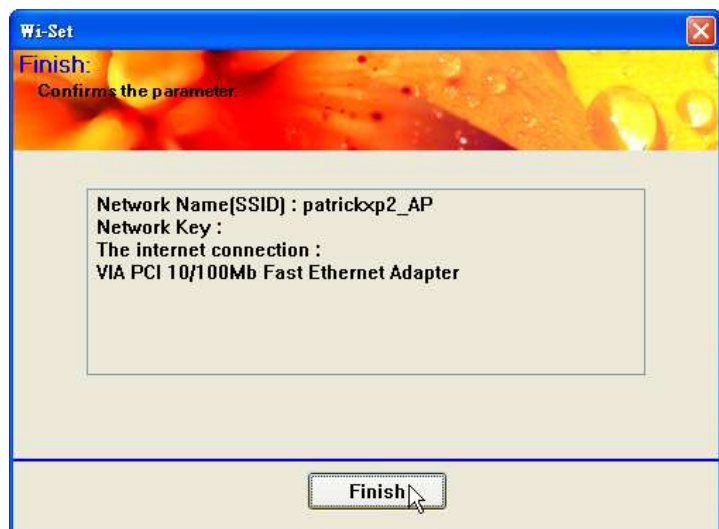
Cancel

Give up current Wi-Set Wizard setup and roll back to previous configuration.

Finish

Finish

Press finish button to close Wi-Set wizard. The wireless configuration is going to be applied within few seconds.

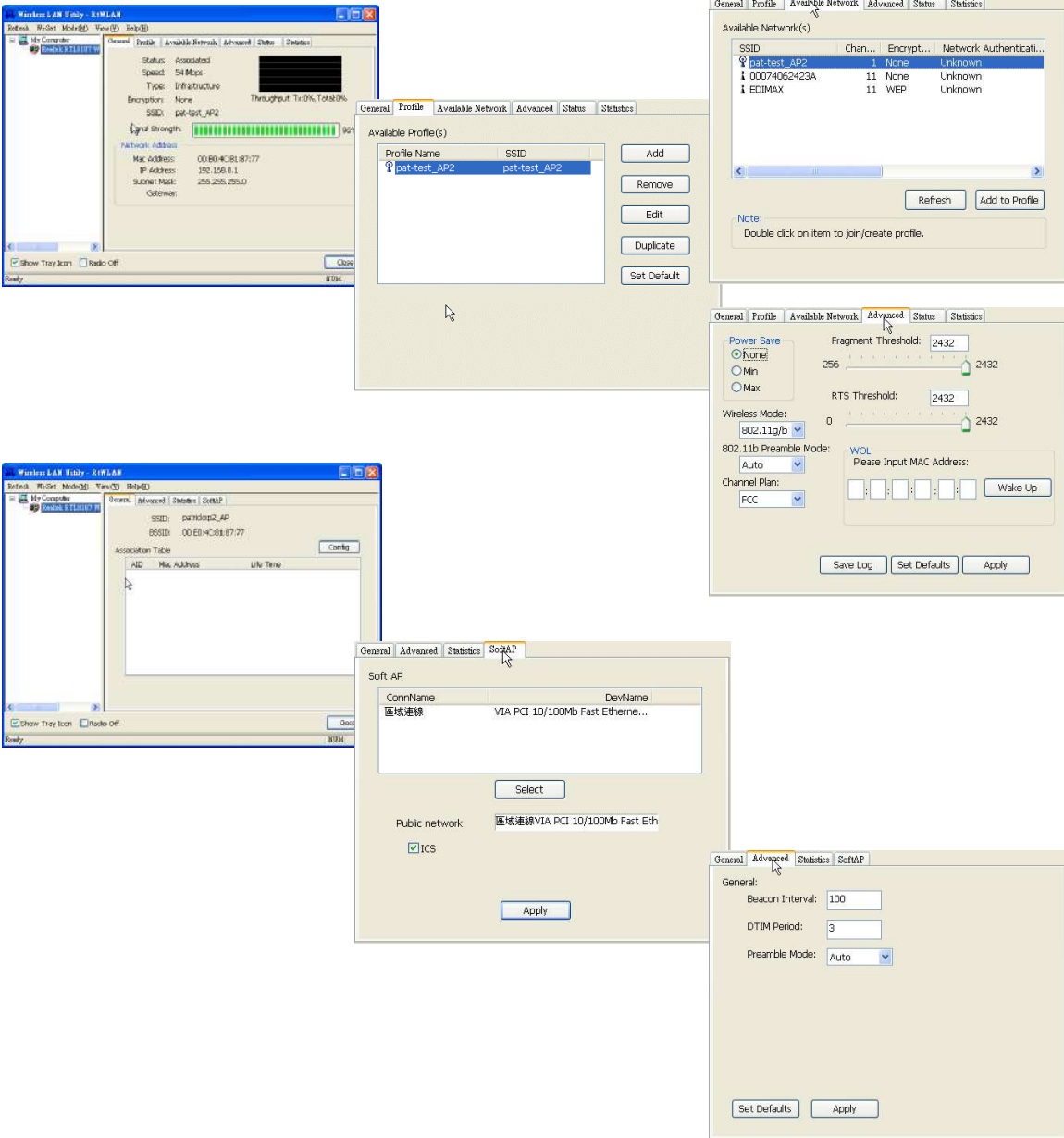




AzureWave
AzureWave Technologies, Inc.



Chapter 4 RtWLAN: Wireless LAN Management GUI



4.1 How to Launch RtWLAN

You could launch **RtWLAN** from either Windows® Program Menu or tray icon. The tray icon is an optional quick launch to be enabled by user.

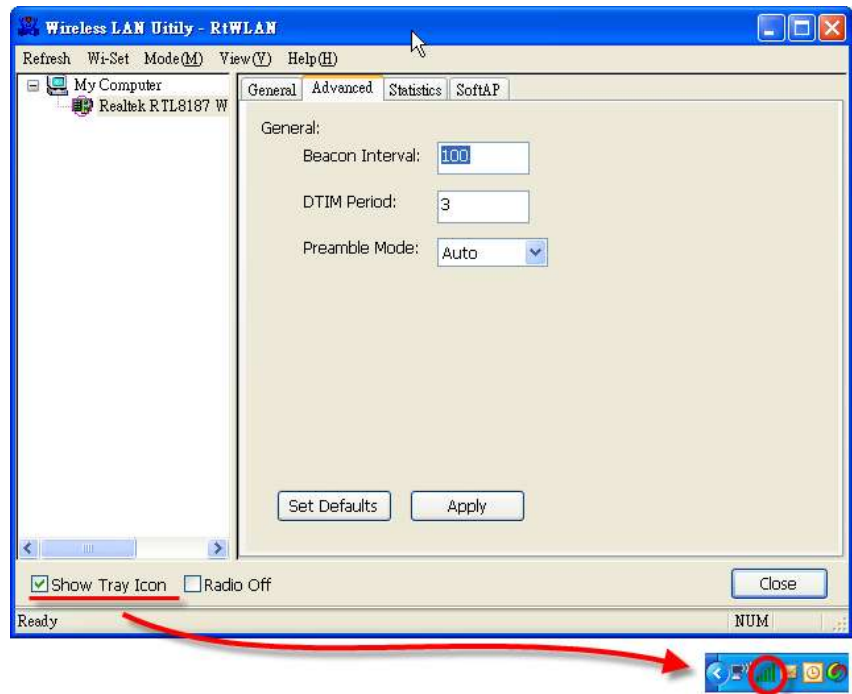
Windows® Program Menu

It is the absolute way to launch **RtWLAN** from program folder.



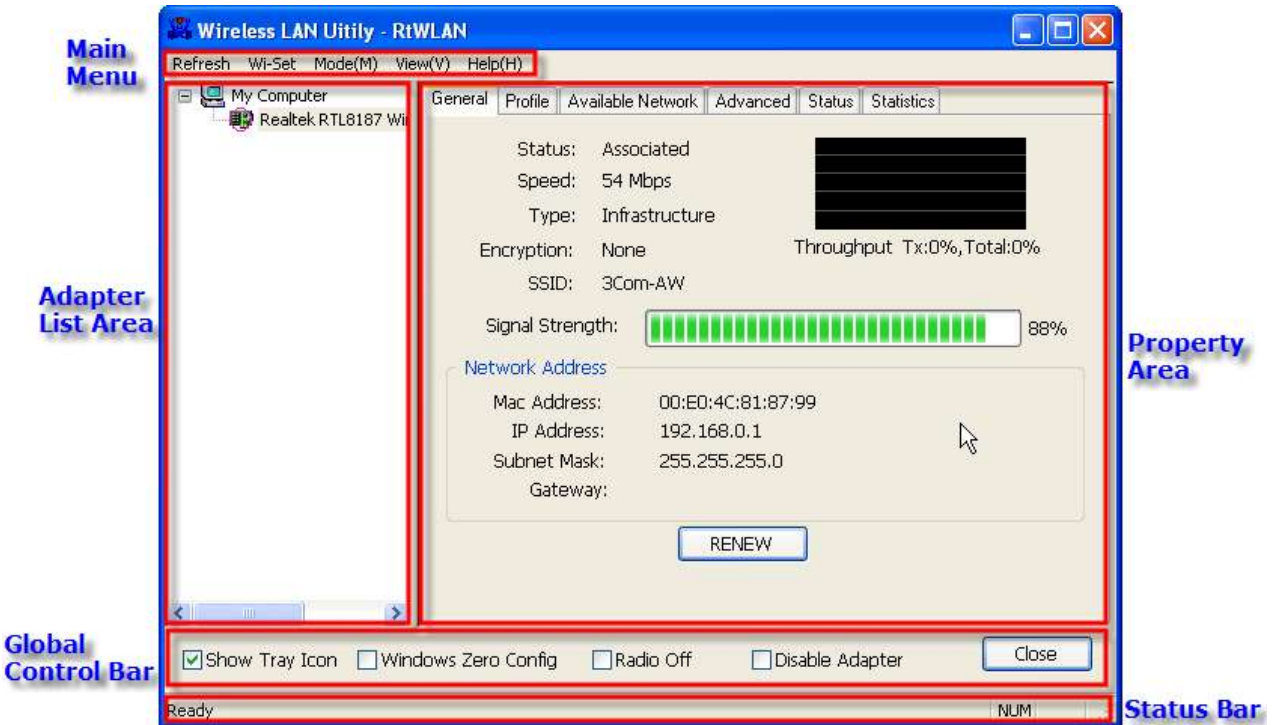
Tray Icon

The tray icon will not be show until you enable the “Show Tray Icon” from **RtWLAN** as the right picture. As the **RtWLAN** icon shown on system tray, you could double click the icon with mouse button to launch it.



4.2 Introduction of Main Window

The main window is assembled with five parts, main menu, adapter list area, properties area, global control bar and status bar. Please read the explanations below before operating the **RtWLAN**.



Main Menu

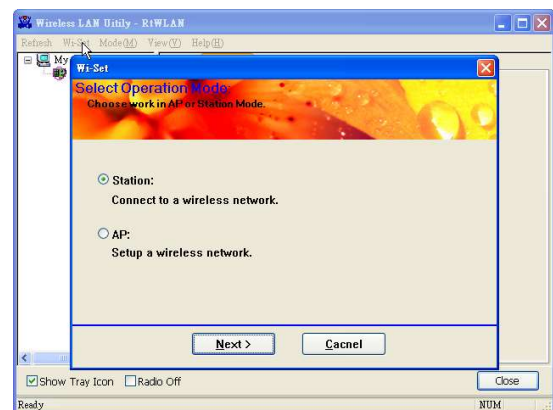
The main menu includes five submenus.

Refresh

As clicking the refresh menu, the contents of adapter list area are re-enumerated and updated.

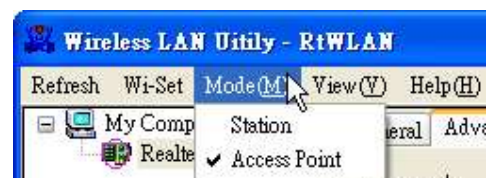
Wi-Set

Quickly launching the Wi-Set Wizard. The convenient quick launching helps you to reprogram the wireless configuration as need.



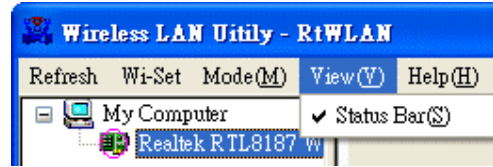
Mode

Quickly switching wireless configuration to be either [Station] or [Access Point]. The item with check mark in front is the current wireless configuration.



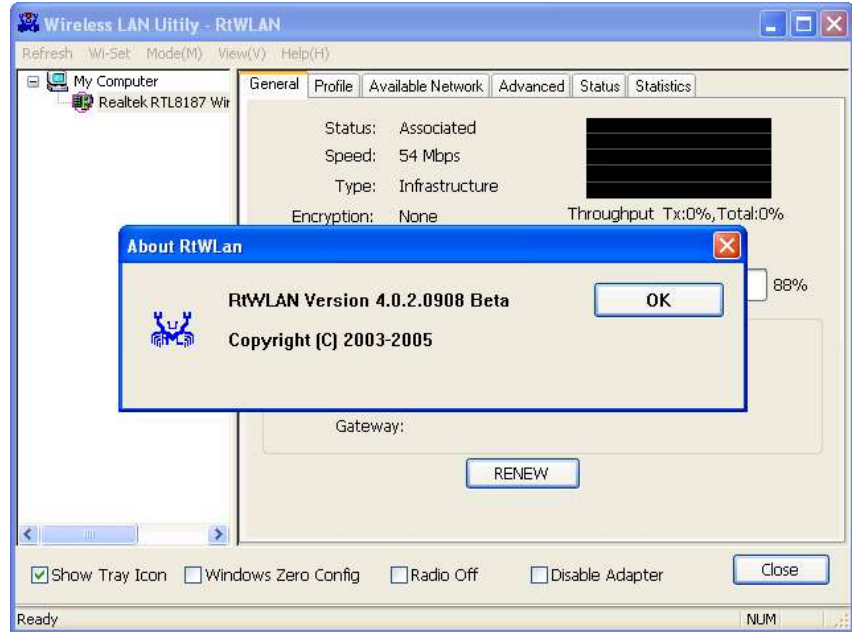
View

Enable/disable the present of status bar. With check mark in front will make the status bar showing up. Otherwise the status bar is hidden.



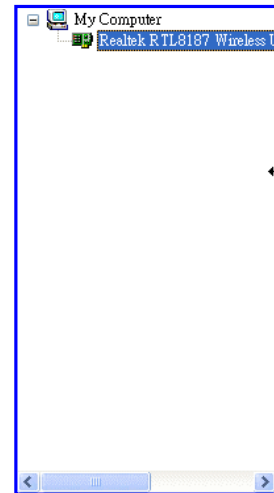
Help

Click the menu item **“About RtWLAN”** to show the about dialog. The about dialog shows you the application version and license information.



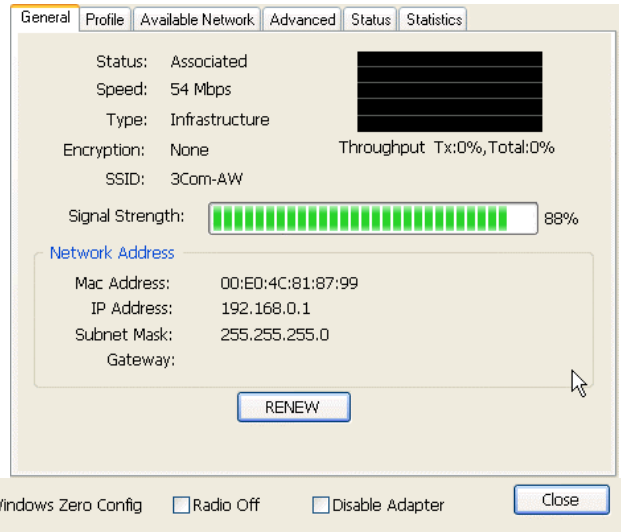
Adapter List Area

This area displays all connected adapters on this system for multiple adapter installations. The easy switch helps user to change the selected adapter by one click. The contents of properties area are dependant on wireless configuration that the selected adapter was set up. For single adapter installed system, the only one adapter is always selected.



Properties Area

The contents of this area are dependent on current wireless configuration. You could know the current configuration through previous explanation of submenu **“Mode”**. The detail contents are described in following wireless configuration sections for both Station and AP mode.



Global Control Bar

Each control items on this bar affects the adapter or management GUI directly.

Show Tray Icon

Making this item to be checked, the management GUI will minimize and stay on the tray icon located at the right down corner of Windows while pressing “Close” button. In other word, management GUI will shut down while pressing “Close” button with unchecked condition.

Windows Zero Config

Help switching to Microsoft Windows ® XP Wireless network configure service if you do not prefer applying RtWLAN as your wireless LAN manager. The detail steps you should follow are described in section 4.5.

Radio Off

Turn off the radio for saving power. While the radio being off, the links with other wireless network nodes are disconnected. User should be care of it while the wireless configuration is in AP mode. The radio off will cause the sub network belong to the AP to disconnect with internet/intranet.

Disable Adapter

Make this wireless LAN adapter being functionless for increasing better system resource management on performance and CPU utilization.

Close

Shutdown or hide the management GUI. The behavior depends on the check box of **“Show Tray Icon”**.

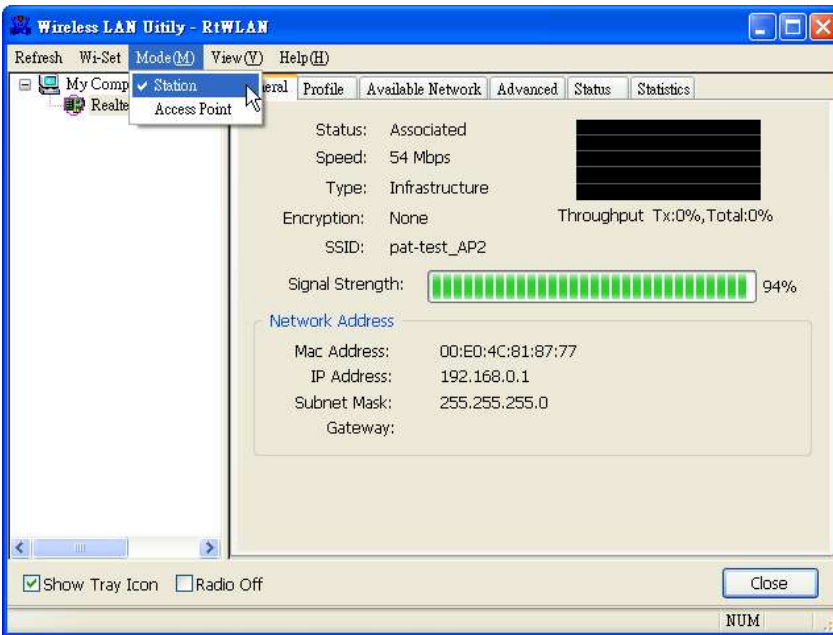
Status Bar



The status bar presents the hints or status of the management GUI.

4.3 Station mode

Two types, Ad-Hoc and infrastructure in station mode could be configured through Wi-Set Wizard. The following two sections explain the operation of management GUI for each type. The following explanations focus on the properties area.

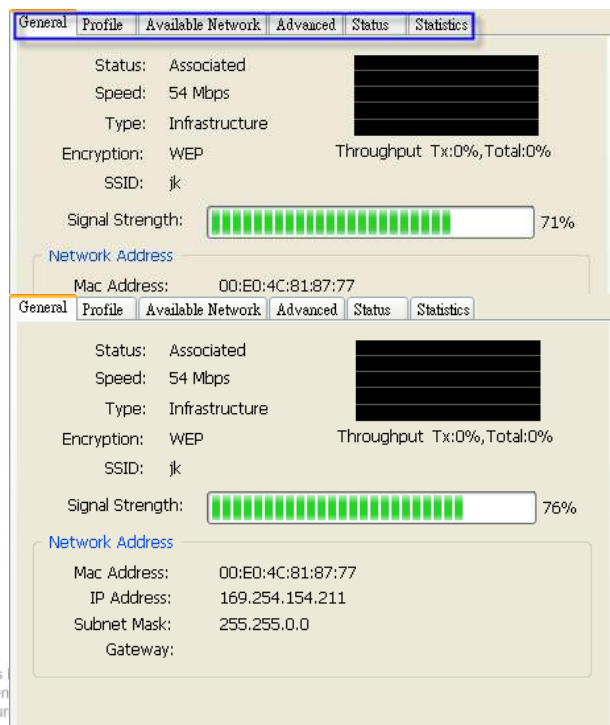


4.3.1 Infrastructure and Ad-Hoc

With both Infrastructure and Ad-Hoc types, the properties should look like the picture beside. Six property pages present different information of current wireless network status.

Reading the following explanations before you reviewing these pages, it could help you to well know the wireless environment around the system.

It is easy use to switch property pages just by left button clicking of mouse the title of each page. The following six sections describe detail information of the opposite page.



General page

This page represents the general information of this adapter.

| **Status**

The connection status with access point this station has.

| **Speed**

Current transition speed in Mbps.(Mega-Bits-Per-Second)

| **Type**

Current wireless LAN configuration type

| **Encryption**

Current encryption mode used

| **SSID**

Name of wireless network

| **Signal Strength**

The average quality of signal pf packets received from wireless network. We recommend connecting access point with over 70% signal strength.

| **Throughput diagram**

Transition (Tx) performance

| **Network Address group**

- n Mac Address: six two-digital number of this adapter
- n IP Address: assigned network address by DHCP server or self-definition in four three-digital number format
- n Subnet Mask: the only valid value is 255.255.255.0
- n Gateway: It comes from connected access point. Your system can not connect internet with this field empty.

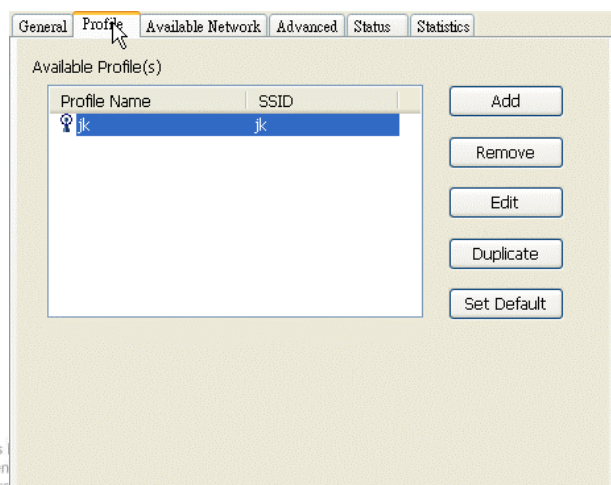
Profile page

This page provides profiles management like add, remove, edit and duplicate just by pressing the button.

| **Available Profile(s)**

The list box shows all the created profiles.

| **Add**



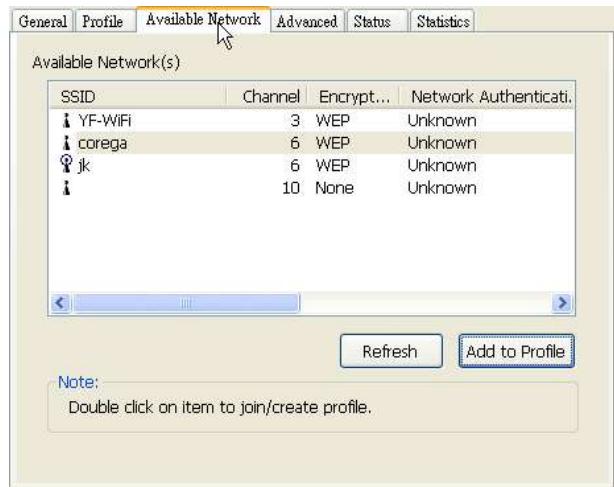
Add a new access point profile by manual input.

- | **Remove**
Remove the selected profile
- | **Edit**
Edit contents of selected profile
- | **Duplicate**
Make copy of selected profile.
- | **Set Default**
Set the selected profile as default selection.

Available Network page

This page presents all access points around this system. And you could pick one of these network connections.

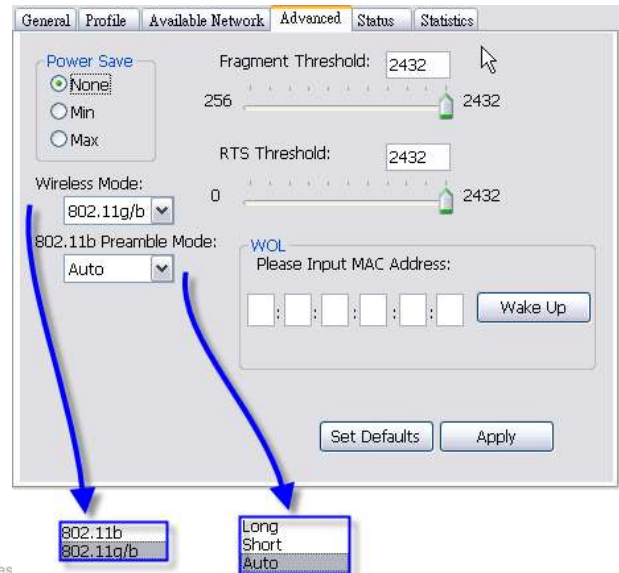
- | **Available Network(s)**
Present network connection around this system
- | **Refresh**
Rescan network connection around this system
- | **Add to Profile**



Create profile for selected network connection in profile list and add it in to profile list.

Advanced page

- | **Power Save**
 - n None: without power save mode
 - n Min: wake up every two time interval to receive packets
 - n Max: wake up every ten time interval to receive packets
- | **Wireless Mode**
 - n 802.11b
 - n 802.11g/b
- | **802.11b Preamble Mode**
 - n Long: higher quality but with lower performance than preamble short mode



- n Short: Normal quality but with higher performance than preamble long mode.
- n Auto: select the proper preamble mode by current signal frame information.
- | **Fragment Threshold**

The threshold of fragment length. Higher threshold increase data transition performance with good signal quality. Poor signal quality results more worst data throughput on high fragment threshold.
- | **RTS Threshold**

Request to send threshold. The request will not send out until the accumulated data over threshold.
- | **WOL (Wake On LAN)**

The wake-on-LAN is applied for remote control purpose. You could wake up a system through network packets. For AzureWave 802.11 b/g USB WLAN Module, only the same adapter on another system could wake it up.

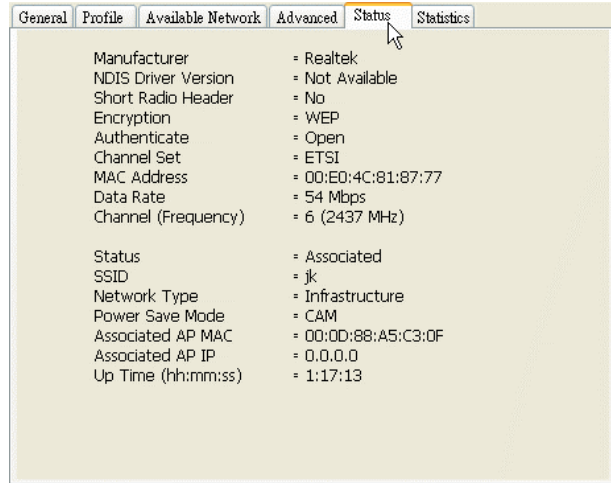
 - n Input MAC Address: the six two-digit numbers of AzureWave 802.11 b/g USB WLAN Module on target system.
 - n Wake Up: press this button to wake it up
- | **Set Defaults**

Restore the default value to be current setting
- | **Apply**

Apply the current setting to GUI

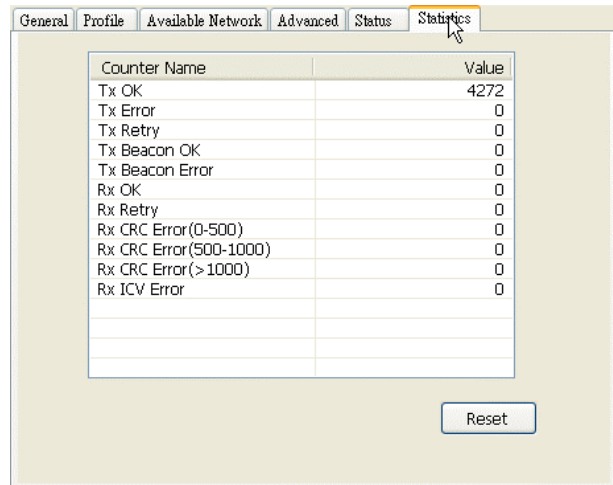
Status page

- | **Manufacturer:** It always is RealTek.
- | **NDIS Driver Version:**
- | **Short Radio Header**
- | **Encryption:** Current encryption mode.
- | **Authenticate:** authentication state
- | **Channel Set:** selected channel plan currently. Please reference Appendix-A with the detail comparisons.
- | **MAC Address:** MAC address of this adapter.
- | **Data Rate:** wireless LAN transition speed
- | **Channel(Frequency):** current channel number
- | **Status:** wireless network status
- | **SSID:** name of connecting access point
- | **Network Type:** indicate current network configuration type
- | **Power Save Mode:** current setting power save mode
- | **Associated AP MAC:** MAC address of connecting access point
- | **Associated AP IP:** IP address of connecting access point
- | **Up Time:** total connection time



Statistics page

You could watch the Tx/Rx status of current wireless connection. It provides a statistic analysis of packet transition.



4.4 AP mode

General Page

In this page, it provides general information of this access point including name, MAC address and list of joined stations.

SSID

The name of this access point is.

BSSID

Six two-digit numbers configure the MAC address of this access point.

Association Table

It is the list of joined station on this access point.

n AID (Association ID)

The AID field is a value assigned by an AP during association that represents 16-bit ID of a station. It is a unique value assigned by AP.

n MAC address

It is the six two-digit numbers that assemble the MAC address of joined station.

n Life Time

It is timer and counts down from 10 minutes whenever the access point connects the station successfully.

Config

A dialog of this access point is shown up for configuration modification except by Wi-Set wizard.

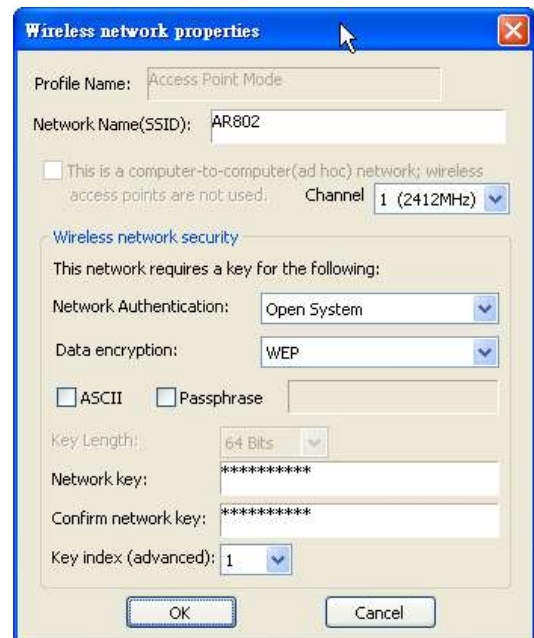
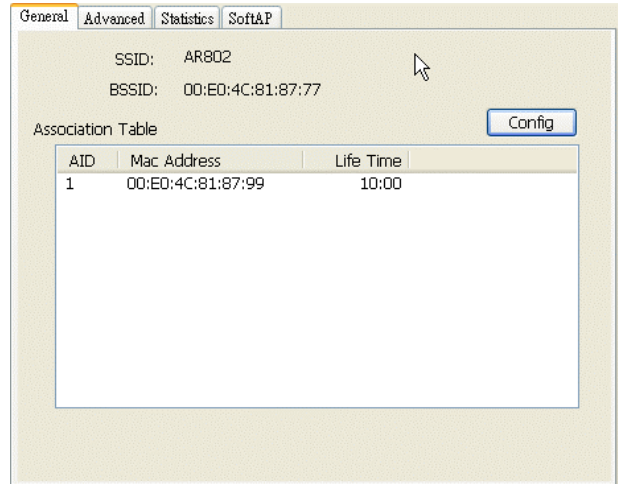
n Network Name (SSID)

Name of the access point searched by other wireless nodes. The length of SSID should be shorter than 32 characters.

n Channel

Select the wireless channel within current channel plan.

n Network Authentication & Data Encryption



Three types authentication:

- l Open System

It is combined with data encryption type to be WEP or disable.

Encryption ~ disabled: you decide to open this access point to every one without network authentication.

Encryption ~ WEP: you decide to setup the basic data encryption with a defined network key.

- l Shared Key + WEP

You decide to apply both authentication and data encryption to prevent illegal login.

- l WPA-PSK + TKIP

The most advance authentication and data encryption could provide best security protection.

- n ASCII

You should provide either 5 or 13 ASCII characters on **Network key** edit box.

- n PASSPHRASE

You could input words on **Network Key** edit box.

- l 64 bits: The generated pass key is 64-bits to be company with data packets.

- l 128 bits: The generated pass key is 128-bits to be company with data packets.

- n Hexadecimal

While both ASCII and PASSPHRASE are not checked, you should input hexadecimal number in the network key box.

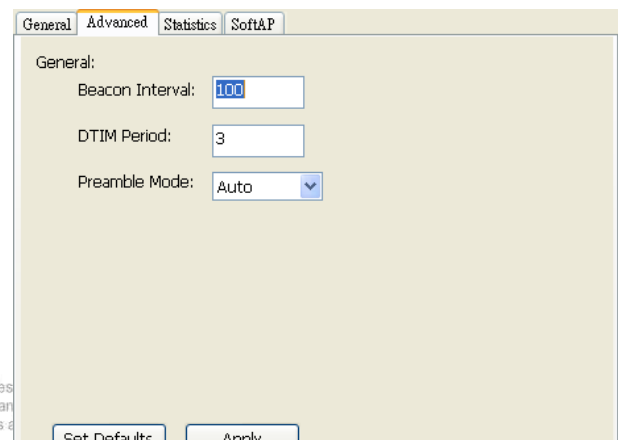
- n Key index (1 ~ 4)

At most four key index to represent the opposite network key.

Advanced Page

In this page, expert could setup the advance characteristics of network packet on transmission.

- l **Beacon Interval**



This field represents the interval between each beacon that this AP sends out. Longer interval may increase the competition of wireless nodes. The maximum value of it is

DTIM Period

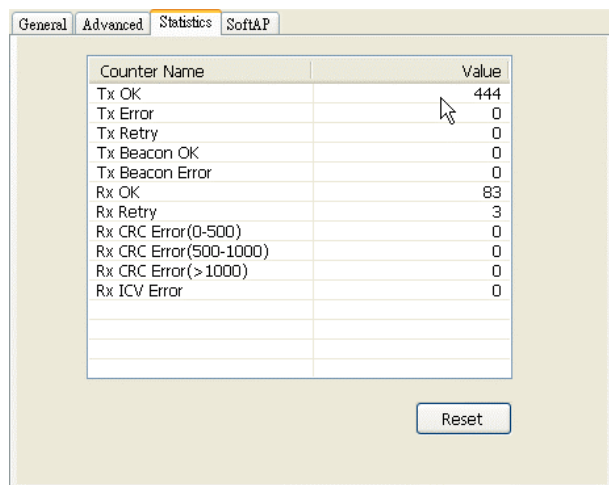
The DTIM Period field indicates the number of Beacon intervals between successive DTIMs.

Preamble Mode

- n Long: higher quality but with lower performance than preamble short mode
- n Short: Normal quality but with higher performance than preamble long mode.
- n Auto: select the proper preamble mode by current signal frame information.

Statistics Page

You could watch the Tx/Rx status of current wireless connection. It provides a statistic analysis of packet transition.



Counter Name	Value
Tx OK	444
Tx Error	0
Tx Retry	0
Tx Beacon OK	0
Tx Beacon Error	0
Rx OK	83
Rx Retry	3
Rx CRC Error(0-500)	0
Rx CRC Error(500-1000)	0
Rx CRC Error(>1000)	0
Rx ICV Error	0

Reset

SoftAP Page

ConnName list box

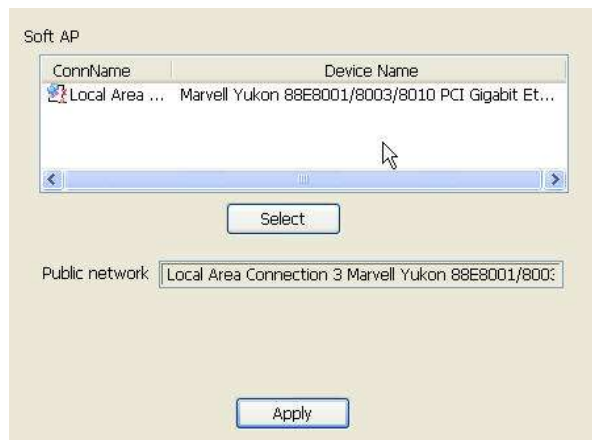
List all network connections on this system. You should pick up one from the listed item(s) if you would connect the network domain, created by Soft AP, to internet/intranet network.

Select

Pick up the desired network connection to public network.

Apply

Execute the current setting.



Soft AP

ConnName	Device Name
Local Area ...	Marvell Yukon 88E8001/8003/8010 PCI Gigabit Et...

Select

Public network: Local Area Connection 3 Marvell Yukon 88E8001/8003

Apply

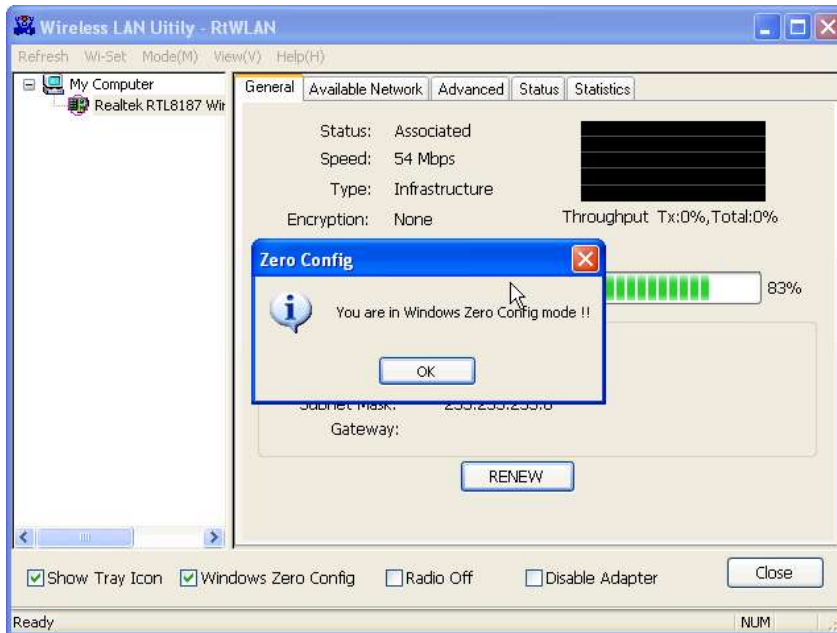
4.5 Windows Zero Configuration

The Windows Zero Configuration is a wireless LAN service that does not provided by Microsoft Windows® until Windows XP. It provides basic and easy on connecting the wireless network. In this chapter, we introduce you the steps to swap between Windows Zero Configuration and RtWLAN. If you prefer Windows Zero Configuration instead through RtWLAN, then you should follow the steps in 4.5.1 to switch to Windows Zero Configuration. In addition, you could rollback to RtWLAN by following the steps in 4.5.2.

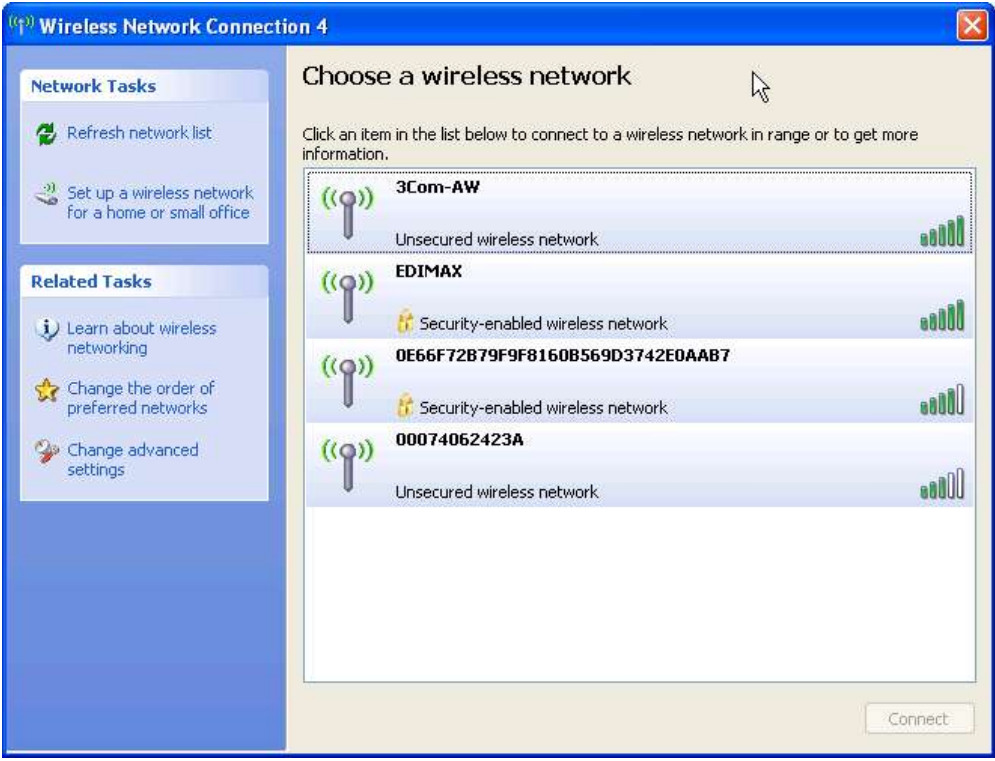
4.5.1 Swap from RtWLAN to Windows Zero Configuration

Five steps are required to archive this operation as following:

Windows Zero Configuration is disabled after installing RtWLAN. You should enable it by making the “Windows Zero Config” item being checked on global control bar. And then a Zero Config dialog is shown up to inform you. Then you have to press OK to confirm the translation.

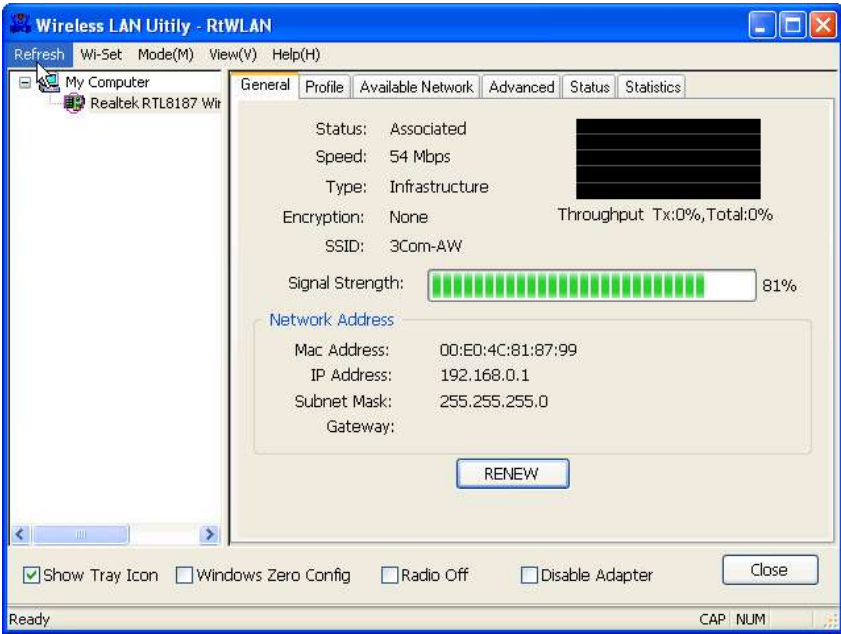


After opening the page of present wireless network, if you see the scene similar to the following figure, then you had been swapped to Windows Zero Configuration successfully. Otherwise, you should check and repeat the previous steps again.



4.5.2 Rollback from Windows Zero Configuration to RtWLAN

If you prefer the RtWLAN instead of Microsoft® Windows Zero Config, please follow the steps to rollback. Open RtWLAN, make the “Windows Zero Config” item on global control bar to be unchecked. After a while, the property area starts to display network connection.





AzureWave
AzureWave Technologies, Inc.



Appendix A: Mapping of country and channel plan

Channels	Country	Channel Set
1~11	Argentina ,Brazil ,Canada ,Colombia ,Mexico ,Taiwan ,United States of America,Yugoslavia	FCC,IC,TAIWAN
1~13	Australia ,Austria ,Bahrain ,Belarus ,Belgium ,Bolivia ,Bulgaria ,Chile ,China ,Costa Rica ,Croatia ,Cyprus ,Czech Republic,Denmark ,Egypt ,Estonia ,Finland ,France2 ,Germany ,Greece ,Hong Kong,Hungary ,Iceland ,India ,Indonesia ,Ireland ,Italy ,Kuwait ,Latvia ,Lebanon , Liechtenstein ,Lithuania ,Luxembourg ,Macedonia, The Former Yugoslav Republic of ,Malaysia ,Morocco ,Netherlands ,New Zealand,Nigeria ,Norway ,Panama ,Paraguay ,Peru ,Philippines ,Poland ,Portugal ,Puerto Rico,Romania ,Russia , Saudi Arabia,Singapore ,Slovakia ,Slovenia ,South Africa,South Korea,Sweden ,Switzerland ,Thailand ,Turkey ,United Arab Emirates,United Kingdom ,Uruguay ,Venezuela	ETSI,MKK1
10 ~ 13	France,Jordan	France
3~9	Isreal	Isreal
1~14	Japan1	MKK1+MKK
14 only	Japan2	MKK
10~11	Spain	Spain

General Specifications

Model Name	AW-GA800BT
Product Description	USB Wireless Module
WLAN Standard	IEEE 802.11b/g, Wi-Fi compliant
Host Interface	USB 2.0
Dimension	35mm x 80mm x 11.7mm (not including SMA connector and pin headers)
Weight	15 g
Operating Conditions	
Voltage	3.3V +/- 5%
Temperature	Operating: 0 ~ 55°C; Storage: -20 ~ 65°C
Humidity	15% ~ 95%
Electrical Specifications	
Frequency Range	2.4 GHz ISM radio band
Number of Channels	802.11b: USA, Canada and Taiwan – 11 (2412~2462MHz) Most European Countries – 13, France – 4, Japan – 14 802.11g: USA, Canada and Taiwan– 11 (2412~2462MHz) Most European Countries – 13, Japan – 14
Modulation	802.11b: CCK(11, 5.5Mbps), DQPSK(2Mbps), BPSK(1Mbps) 802.11g: OFDM
Output Power	802.11b: typical 17 dBm (Peak Power 22.63 dBm) 802.11g: typical 14 dBm (Peak Power 22.64 dBm)
Antenna	SMA connector for external antenna
Receive Sensitivity	802.11b: typical -86dBm at 11Mbps 802.11g: typical -68dBm at 54Mbps
Data Rates	802.11b: 1, 2, 5.5, 11Mbps 802.11g: 6, 9, 12, 18, 24, 36, 48, 54Mbps
Power Consumption	802.11b: TX:500mA; RX:315mA at 3.3V

	802.11g: TX:400mA; RX:315mA at 3.3V
Security	<ul style="list-style-type: none"> u WEP 64-bit and 128-bit encryption u WPA(Wi-Fi Protected Access)
Operating System Compatibility	Windows ME/2000/XP/server 2003/64bit XP
Regulatory	<p>FCC 47 CFR Part 15, Subpart C(Section 15.247), ANSI C63.4-2003</p> <p>CE EN 300 328 V1.6.1/EN 50371</p> <p>DGT LP0002</p> <p>Australia AS/NZS 4268:2003</p> <p>Canada RSS-210</p> <p>Korea</p> <p>India</p>

Appendix B: Q&A

Q:

After applying security setting, why my computer can not connect to the system that configures the AzureWave 802.11 b/g USB WLAN Module as AP mode?

A:

There are several condition could result this issue.

- | Security setting mismatch: please make sure the security and network key are identical to both AP and station side.
- | Station utilizes Windows Zero Configuration to join the Access Point: you could change the WEP to be ASCII or Hexadecimal. The PassPhrase format is not supported by Windows Zero Configuration.

Q:

My notebook cannot browse internet after connecting the AzureWave 802.11 b/g USB WLAN Module. I could see the station on the general page of RtWLAN. What's happened?

A:

It could lose ICS connection. First, you should make sure the access point connect to intranet/internet through another network connection. And then select the network connection as ICS. Please reference the "Soft AP Page" segment in section 4.4.

Appendix C: Release History

Version	Comments	Opposite Package Version
1.2	Update ICS operation of user interface Add Appendix C for release history	10.27 ~
1.1	Update Windows Zero Configuration operations of user interface	10.27 ~
1.0	First formal release	09.27 ~

Federal Communication Commission Interference Statement

This equipment has been tested and found to comply with the limits for a Class B digital device, pursuant to Part 15 of the FCC Rules. These limits are designed to provide reasonable protection against harmful interference in a residential installation. This equipment generates, uses and can radiate radio frequency energy and, if not installed and used in accordance with the instructions, may cause harmful interference to radio communications. However, there is no guarantee that interference will not occur in a particular installation. If this equipment does cause harmful interference to radio or television reception, which can be determined by turning the equipment off and on, the user is encouraged to try to correct the interference by one of the following measures:

- Reorient or relocate the receiving antenna.
- Increase the separation between the equipment and receiver.
- Connect the equipment into an outlet on a circuit different from that to which the receiver is connected.
- Consult the dealer or an experienced radio/TV technician for help.

This device complies with Part 15 of the FCC Rules. Operation is subject to the following two conditions: (1) This device may not cause harmful interference, and (2) this device must accept any interference received, including interference that may cause undesired operation.

FCC Caution: Any changes or modifications not expressly approved by the party responsible for compliance could void the user's authority to operate this equipment.

IMPORTANT NOTE:

FCC Radiation Exposure Statement:

This equipment complies with FCC radiation exposure limits set forth for an uncontrolled environment. This equipment should be installed and operated with minimum distance 20cm between the radiator & your body.

This transmitter must not be co-located or operating in conjunction with any other antenna or transmitter.

IEEE 802.11b or 802.11g operation of this product in the U.S.A. is firmware-limited to channels 1 through 11.

This device is intended only for OEM integrators under the following conditions:

The antenna must be installed such that 20 cm is maintained between the antenna and users, and the transmitter module may not be co-located with any other transmitter or antenna.

As long as 2 conditions above are met, further transmitter test will not be required. However, the OEM integrator is still responsible for testing their end-product for any additional compliance requirements required with this module installed (for example, digital device emissions, PC peripheral requirements, etc.).

IMPORTANT NOTE: In the event that these conditions can not be met (for example certain laptop configurations or co-location with another transmitter), then the FCC authorization is no longer considered valid and the FCC ID can not be used on the final product. In these circumstances, the OEM integrator will be responsible for re-evaluating the end product (including the transmitter) and obtaining a separate FCC authorization.

End Product Labeling

This transmitter module is authorized only for use in device where the antenna may be installed such that 20 cm may be maintained between the antenna and users. The final end product must be labeled in a visible area with the following: “Contains TX FCC ID: TLZ-800BT”.

Manual Information That Must be Included

The OEM integrator has to be aware not to provide information to the end user regarding how to install or remove this RF module in the users manual of the end product which integrate this module.

The users manual for OEM integrators must include the following information in a prominent location “ **IMPORTANT NOTE:** To comply with FCC RF exposure compliance requirements, the antenna used for this transmitter must be installed to provide a separation distance of at least 20 cm from all persons and must not be co-located or operating in conjunction with any other antenna or transmitter.

Industry Canada Statement

Operation is subject to the following two conditions:

- 1) this device may not cause interference and
- 2) this device must accept any interference, including interference that may cause undesired operation of the device

This device has been designed to operate with an antenna having a maximum gain of 2 dBi.

Antenna having a higher gain is strictly prohibited per regulations of Industry Canada. The required antenna impedance is 50 ohms.

To reduce potential radio interference to other users, the antenna type and its gain should be so chosen that the EIRP is not more than required for successful communication.

IMPORTANT NOTE:

IC Radiation Exposure Statement:

This equipment complies with IC radiation exposure limits set forth for an uncontrolled environment. This equipment should be installed and operated with minimum distance 20cm between the radiator & your body.

This transmitter must not be co-located or operating in conjunction with any other antenna or transmitter.

DGT 警語：

經型式認證合格之低功率射頻電機，非經許可，公司、商號或使用者均不得擅自變更頻率、加大功率或變更原設計之特性及功能。

低功率射頻電機之使用不得影響飛航安全及干擾合法通信；經發現有干擾現象時，應立即停用，並改善至無干擾時方得繼續使用。前項合法通信，指依電信法規定作業之無線電通信。低功率射頻電機須忍受合法通信或工業、科學及醫療用電波輻射性電機設備之干擾。

本模組於取得認證後將依規定於模組本體標示審驗合格標籤，並要求平台上標示「本產品內含射頻模組：ID編號」