

深圳必联电子有限公司

SHENZHEN B-LINK ELECTRONICS CO.,LTD.

IEEE 802.11 b/g/n WiFi Module

Model: BL-LWXX Series

Revision:7A

Date:2011.08.06

TEL: +86-0755-28023453

FAX:+86-0755-28029002

EMAIL:he@lefen.net

<http://www.b-link.net.cn>

ADD: NO 37,FuQian Rd, JuTang Community,GuanLan town BaoAn district,ShenZhen, 518110,China

1: Introduction:

BL-LWXX Serives product is a low power, high linear output power, in line with IEEE802.11B / G /N standard, IEEE 802.11i security protocol support, and the standard IEEE 802.11e quality of service 150M USB wireless card, with other meet the standard of wireless devices interconnected, supporting the latest WEP 64/128 bit data encryption, support WPA-PSK/WPA2-PSK, WPA/WPA2 security, wireless transmission rates of up to 150M, 11G is the product of 3 times normal, the All the smart set high gain antenna, can adapt to different working environment, desktop or notebook computer users, and other wireless networking devices need to achieve easy access to the wireless network.

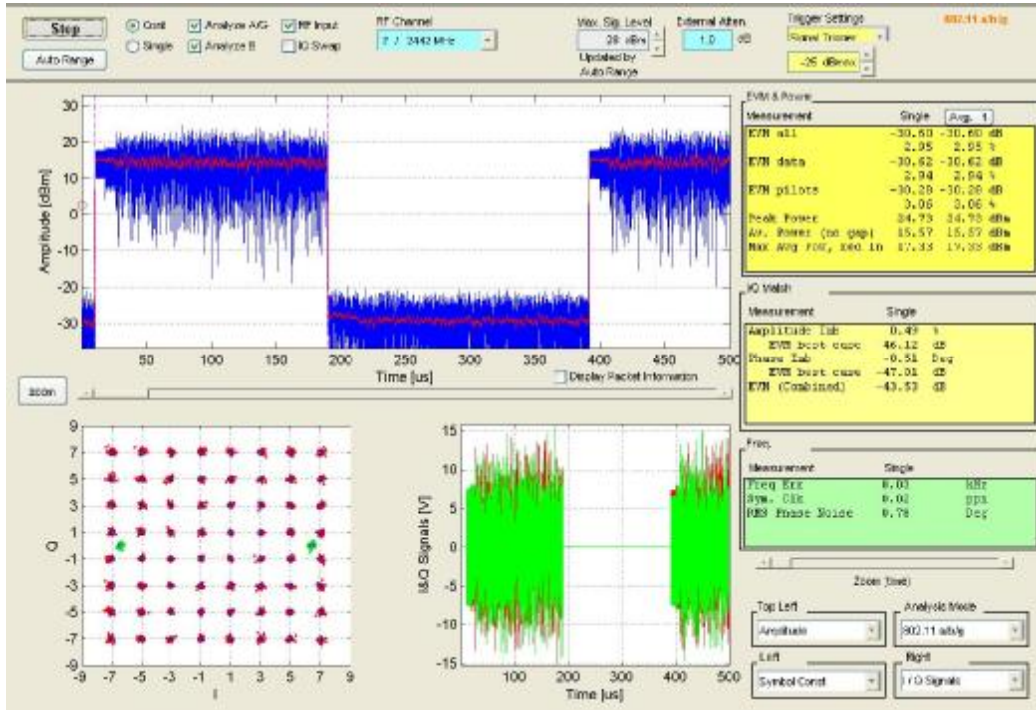
2: Application:

Wireless Internet, network cameras, set-top box GPS, hard disk player, wireless networking equipment and other needs

3: product Features

Project	Description
Supported protocols and standards	IEEE 802.11N IEEE 802.11G, IEEE 802.11B CSMA/CA ACK
Bus Interface	USB1.1 USB2.0
Frequency range	2.4-2.4835GHZ
Data modulation	14
Data modulation	OFDM/DBPSK/DQPSK/CCK
Mode	Infrastructure or Ad-Hoc
Transmission rate	150/54/48/36/24/18/12/9/6/5.5/2/1M
Sensitivity @PER	54/150M:-72dBm@10%PER,11M:-85dBm@8%PER 6M: -88dBm@10%PER , 1M: -90dBm@8%PER
Transmit power	54M/150M:15DBM, 11M:19DBM
Antenna gain	2dbi
LED Instructions	Status Indicator
Transmission distance	Indoor up to 100m, outdoor up to 300 meters (depends on the environments)
Operating System Support	WIN2000/XP/VISTA/LINUX/WINCE/WIN7
Operating voltage	DC 5V +-0.2V
Environment:	Operating temperature:0°C---40°C Work Humidity:10%---90%
Size (L*W*H)	39.4MM*15MM*3MM
Software Version	VER:2.0
IC	RALINK 3070

4: Description of the test parameters



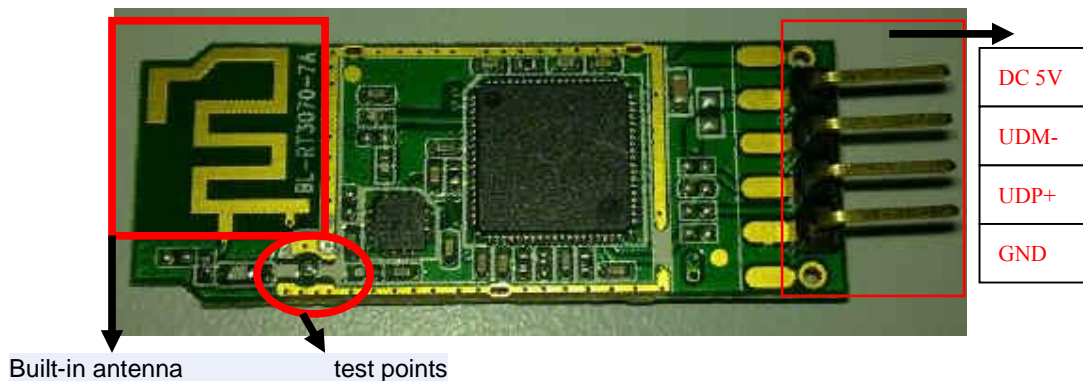
Test Project	Transmit power	EVM	Freq Err	Receiver Sensitivity
Test Data	15.57dbm	-30.6dbm	0.03khz	-72dbm

5: System Support Platform

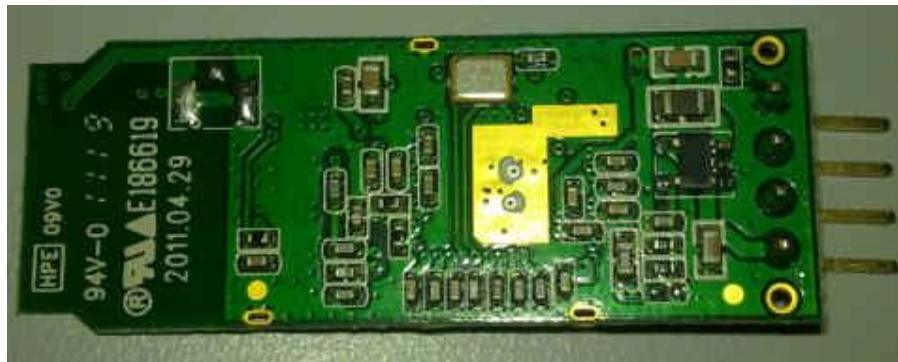
Operating System	CPU Supplier	Drive
WIN2000/XP/VISTA/WIN7	X86 Platform	Support
LINUX2.4/2.6	ARM, MIPSII	Support
WINCE5.0/6.0	ARM ,MIPSII	Support

6: Product pin definition

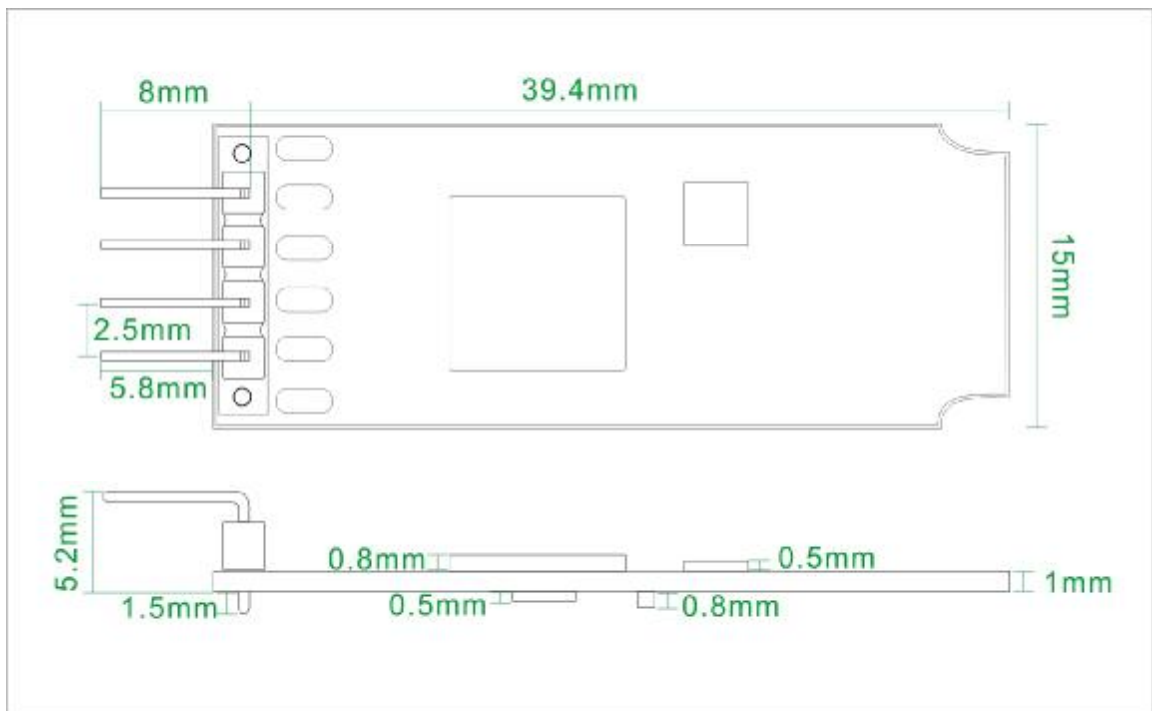
TOP



Bottom



7:Product Size



All dimensional tolerances $\pm 0.2\text{MM}$

FCC ID: X2NBL-LW0XX

This device complies with Part 15 of the FCC Rules. Operation is subject to the following two conditions: (1) this device may not cause harmful interference, and (2) this device must accept any interference received, including interference that may cause undesired operation.

RF warning statement:

The device has been evaluated to meet general RF exposure requirement. The device can be used in portable exposure condition without restriction.

Changes or modifications not expressly approved by the party responsible for compliance could void the user's authority to operate the equipment.

NOTE: This equipment has been tested and found to comply with the limits for a Class B digital device, pursuant to Part 15 of the FCC Rules. These limits are designed to provide reasonable protection against harmful interference in a residential installation. This equipment generates, uses and can radiate radio frequency energy and, if not installed and used in accordance with the instructions, may cause harmful interference to radio communications. However, there is no guarantee that interference will not occur in a particular installation. If this equipment does cause harmful interference to radio or television reception, which can be determined by turning the equipment off and on, the user is encouraged to try to correct the interference by one or more of the following measures:

- Reorient or relocate the receiving antenna.
- Increase the separation between the equipment and receiver.
- Connect the equipment into an outlet on a circuit different from that to which the receiver is connected.
- Consult the dealer or an experienced radio/TV technician for help.