

DVR Hardware Quick Start Guide

Welcome! This guide is the first in a series of quick start guides designed to help get your new Swann smart security system up and running smoothly.

In this guide you will learn how to connect your cameras, HDTV, and other peripherals to the DVR in a few easy steps. Before you start, make sure you have the following:

- High-definition TV (HDTV)
- Internet-connected router

Note: The setup and installation of the SwannOne accessories is covered in the SwannOne Setup (green) QSG

QH850004A120516E | © Swann 2016

SHENZHEN BAICHUAN SECURITY TECHNOLOGY CO., LTD

5th Floor, Building 7, Tangtuo 3rd Industrial Area Shiyuan Town, Baoan District, Shenzhen City, China

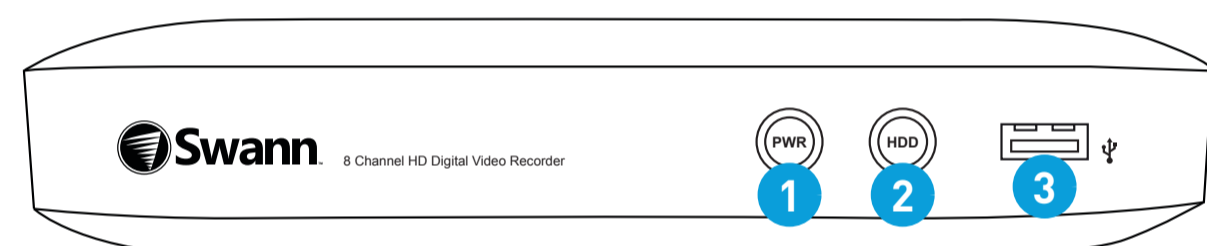


1 Getting to know the DVR

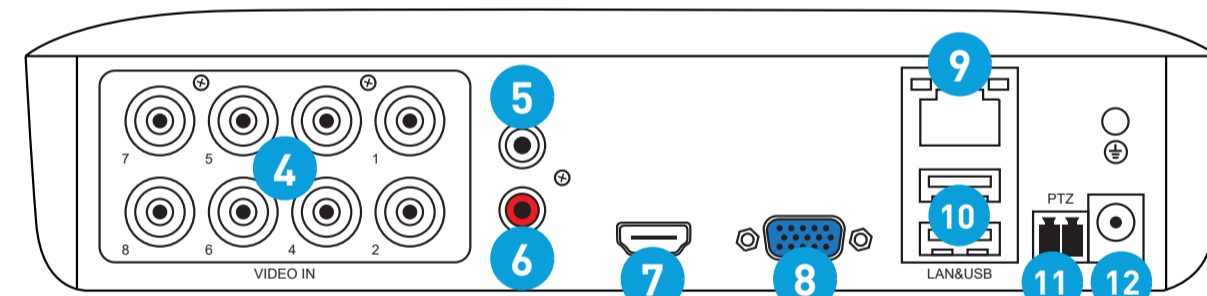
For an overview of the DVR hardware connections, see the reverse side of this guide.

Note: Before installing anything permanently, connect everything up and test the system - just to make sure nothing was damaged during shipping!

Front Panel



Back Panel



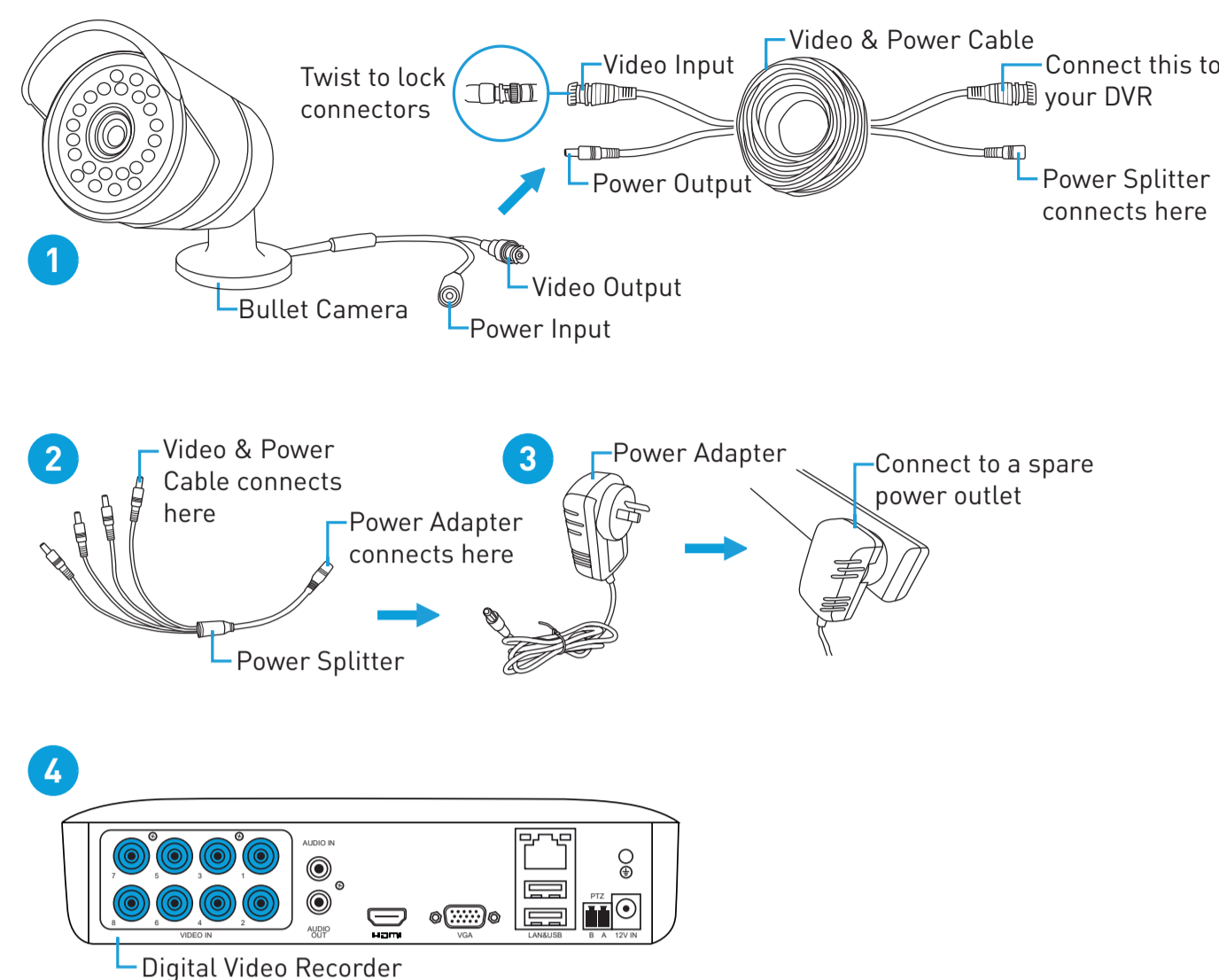
- 1 Power LED
- 2 HDD LED
- 3 USB Port
- 4 Video inputs
- 5 Audio input
- 6 Audio output
- 7 HDMI port
- 8 VGA port
- 9 LAN port
- 10 USB ports
- 11 PTZ Port
- 12 Power input

2 What does this mean?

Here is a quick overview of the various connectors and lights on the DVR:

- Power LED** Lights up when your DVR has power.
- HDD LED** Blinks when the hard drive is active.
- USB port (front)** Connects to your USB flash drive for copying important video files from the DVR's hard drive or upgrading the firmware, if necessary
- Video inputs** This is where you plug in the cables that connect to your cameras
- Audio input** RCA port for connecting a microphone to record sounds nearby
- Audio output** RCA port for connecting speakers
- HDMI port** Connects to your high-definition TV with the HDMI cable
- VGA port** Connects to an additional monitor with a VGA cable (not supplied), if necessary
- LAN port** Connects to your home internet router with the Ethernet cable to enable the DVR to access the internet
- USB ports** Connects to the mouse. The extra USB port can also be used to connect to your USB flash drive for copying important video files from the DVR's hard drive or upgrading the firmware, if necessary
- PTZ port** Connects to a pan, tilt and zoom camera using RS485 connection
- Power input** Connects to the power adapter

3 Connect the cameras

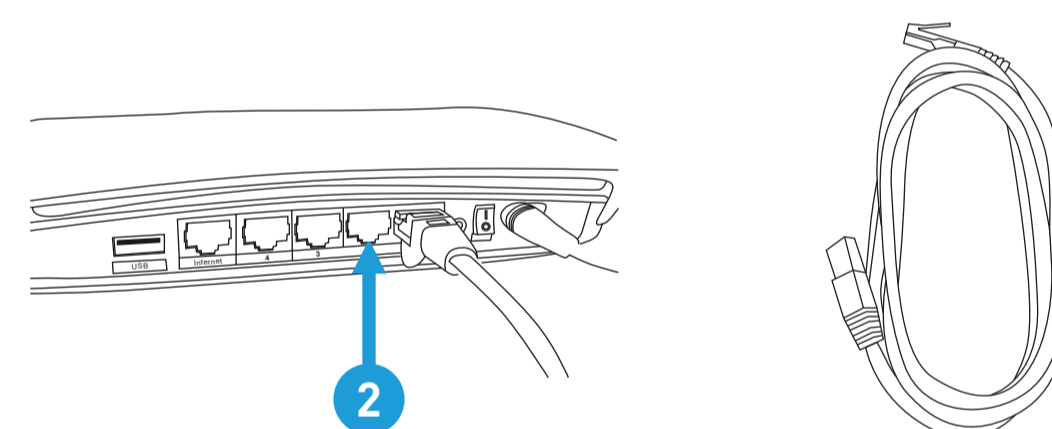
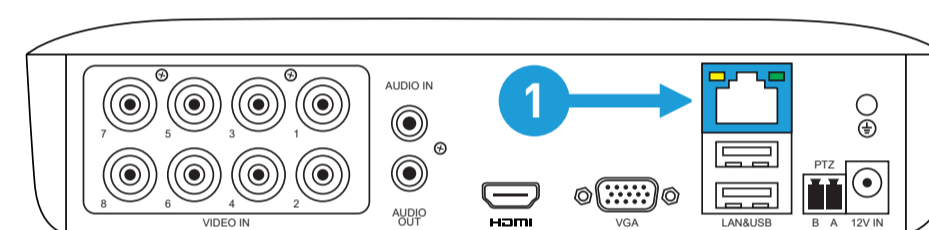


See over the page for a larger version of this diagram.

1. Connect the video output and power input connections on the bullet camera to the corresponding connections on the supplied video & power cable.
2. Connect the supplied power splitter to the other end of the video & power cable. This provides power to multiple cameras using a single power adapter.
3. Connect the other end of the power splitter to the supplied power adapter then connect the power adapter to a spare power outlet.
4. Connect the video output on the video & power cable to each camera input on your DVR. Twist the connection to lock it in place.

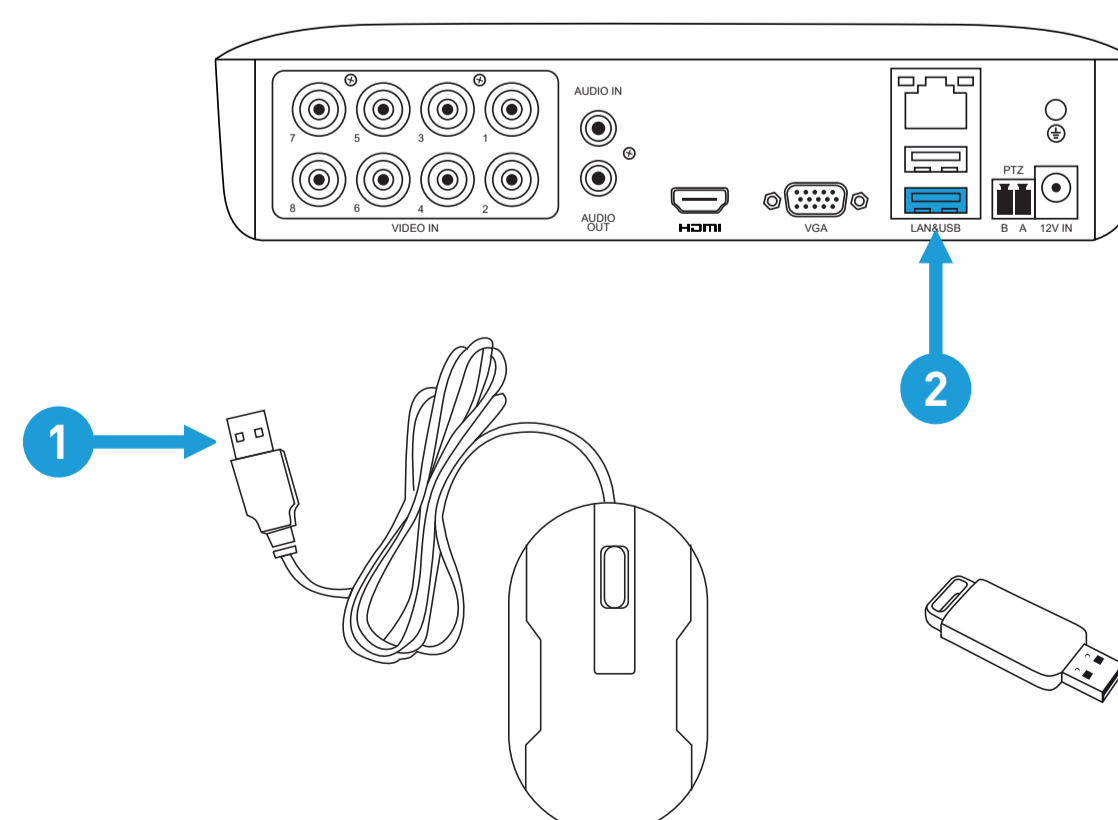
4 Connect to your router

To connect the DVR to the Internet, connect one end of the short Ethernet cable to the LAN port on the back of the DVR, and then connect the other end to a spare port on your Internet-connected router.



5 Connect the mouse

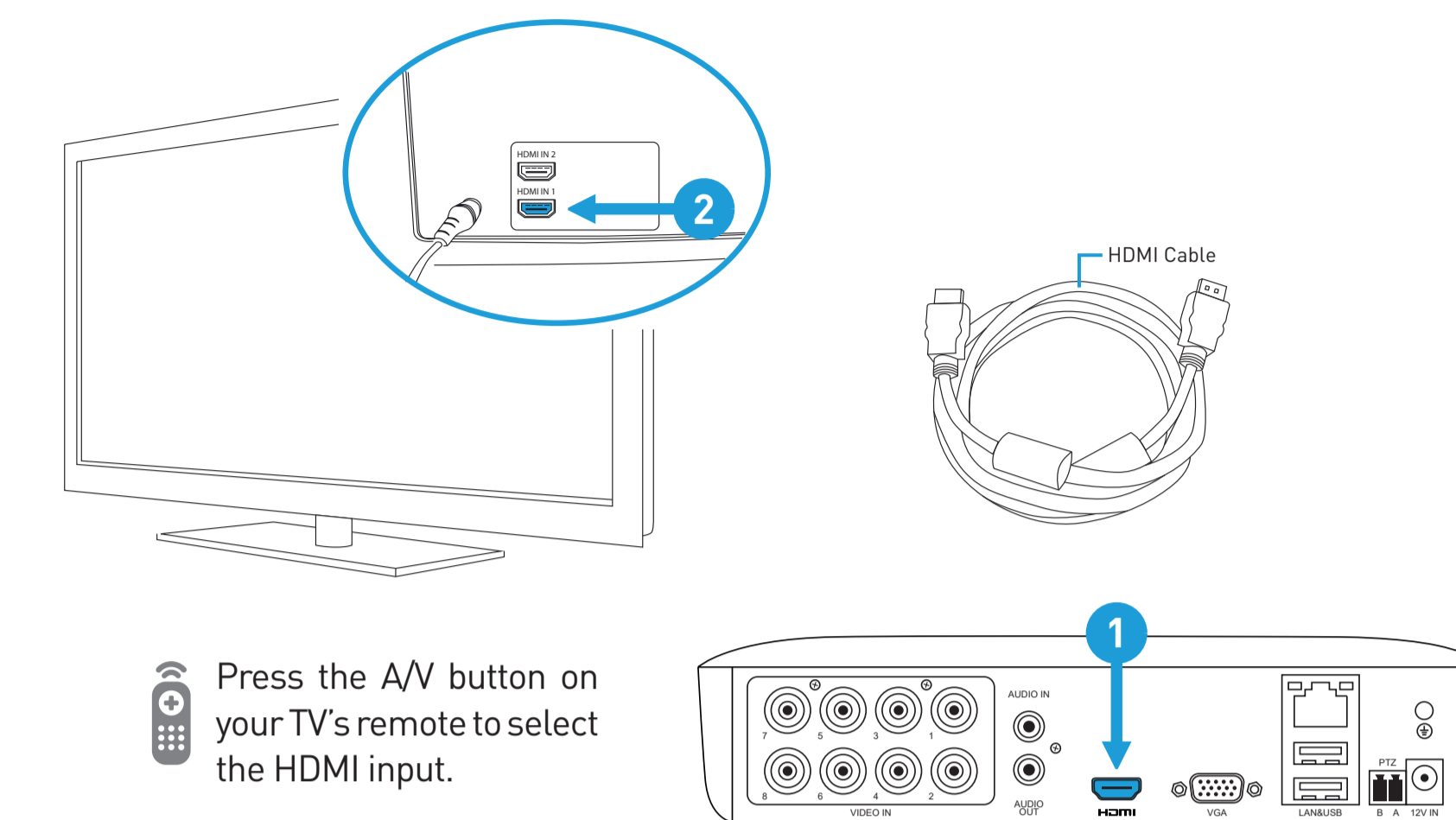
Connect the supplied mouse (1) to the bottom USB port (2). To copy your video recordings and to perform a firmware upgrade, connect a storage device such as a USB flash drive (not included) to the top or front port.



Please note: Bluetooth and wireless mice and trackpad devices are not supported. Not all USB storage devices are supported.

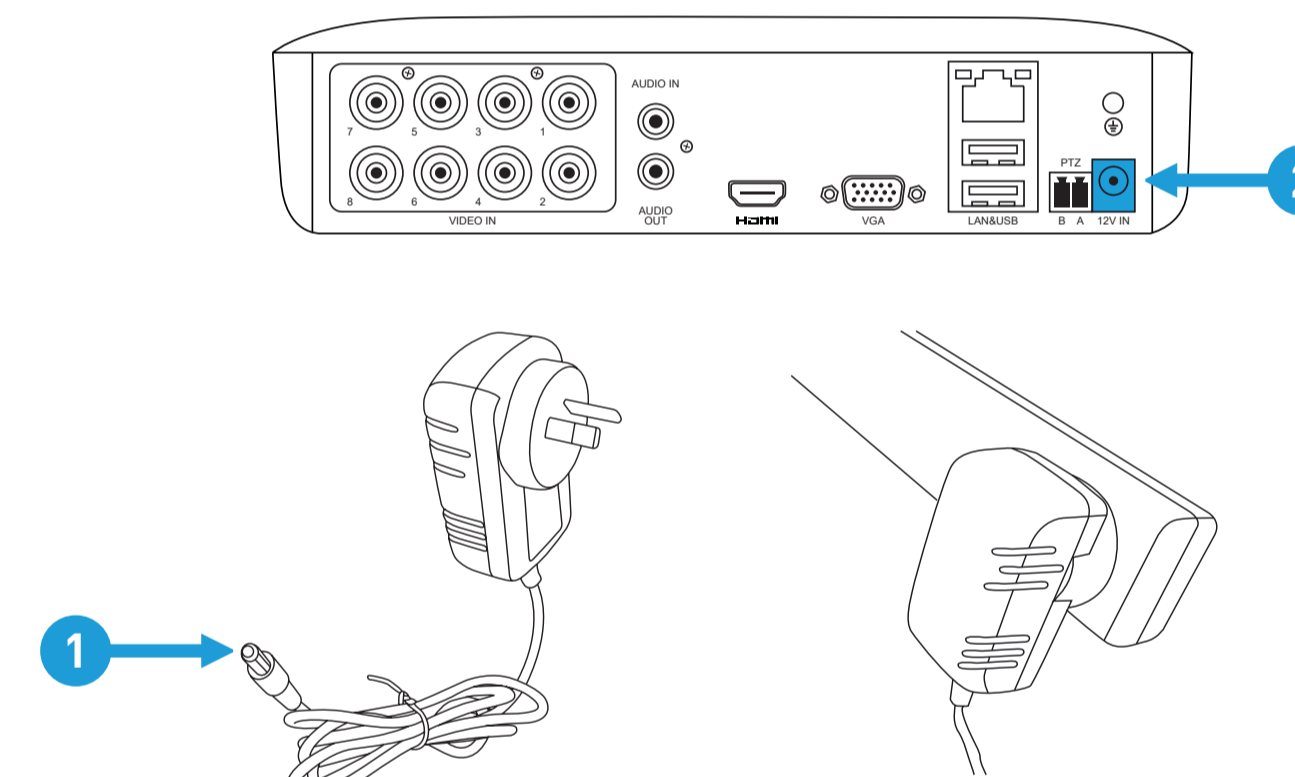
6 Connect to your HDTV

Connect the supplied HDMI cable to the HDMI port (1) on your DVR then connect the other end to a spare HDMI input (2) on your TV. The labels on the back of your TV indicate which input you need to select when your DVR is turned on.



7 Connect the power adapter

Connect the supplied power adapter's power connection (1) to the power input (2) on your DVR first (this will minimise sparking). Connect the power adapter to a power outlet then press the outlet's switch to the on position to supply power.



All connections have now been completed. You should see your DVR on the TV with the Setup Wizard displayed on-screen. Follow the "Setup Wizard" Quick Start Guide (the red coloured guide) to configure your DVR.

FCC Statement

This equipment has been tested and found to comply with the limits for a Class B digital device, pursuant to Part 15 of the FCC Rules. These limits are designed to provide reasonable protection against harmful interference in a residential installation. This equipment generates uses and can radiate radio frequency energy and, if not installed and used in accordance with the instructions, may cause harmful interference to radio communications. However, there is no guarantee that interference will not occur in a particular installation. If this equipment does cause harmful interference to radio or television reception, which can be determined by turning the equipment off and on, the user is encouraged to try to correct the interference by one or more of the following measures:

- Reorient or relocate the receiving antenna.
- Increase the separation between the equipment and receiver.
- Connect the equipment into an outlet on a circuit different from that to which the receiver is connected.
- Consult the dealer or an experienced radio/TV technician for help.

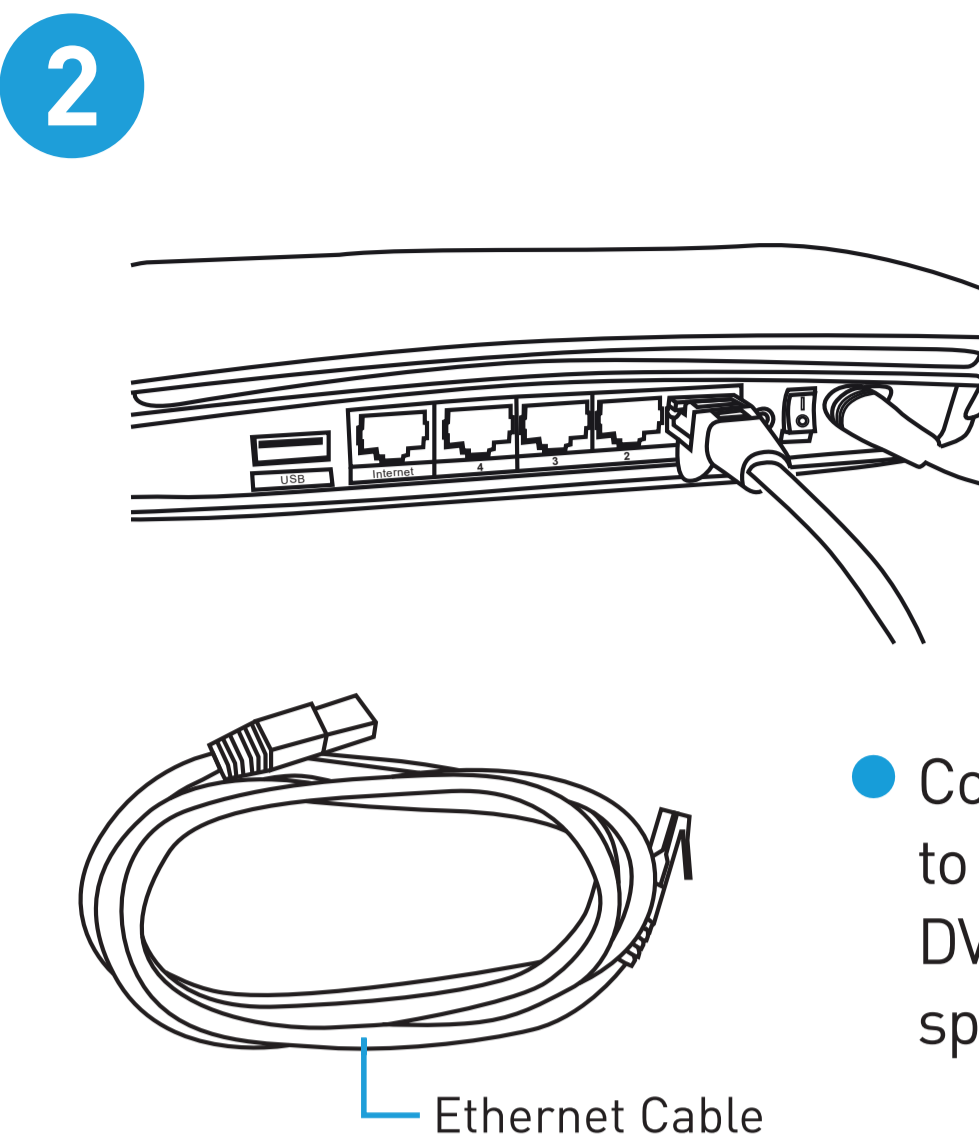
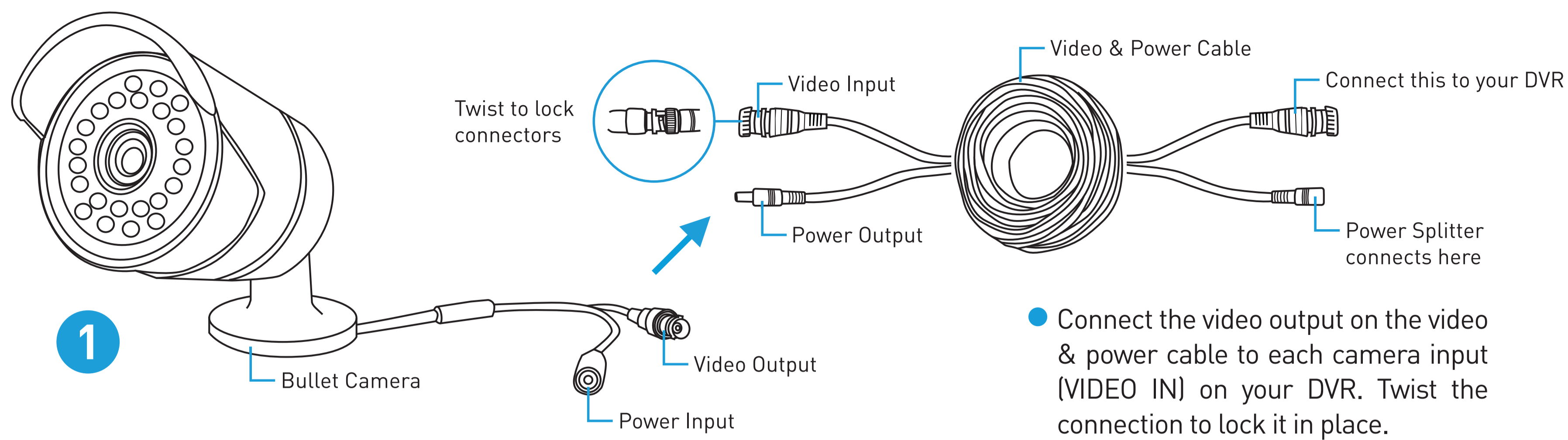
This device complies with part 15 of the FCC Rules. Operation is subject to the following two conditions:

1. This device may not cause harmful interference, and
2. This device must accept any interference received, including interference that may cause undesired operation.

Changes or modifications not expressly approved by the party responsible for compliance could void the user's authority to operate the equipment.

This equipment complies with FCC radiation exposure limits set forth for an uncontrolled environment. This equipment should be installed and operated with minimum distance 20cm between the radiator & your body.

Operating Radio Frequency: 2405MHz ~ 2480MHz



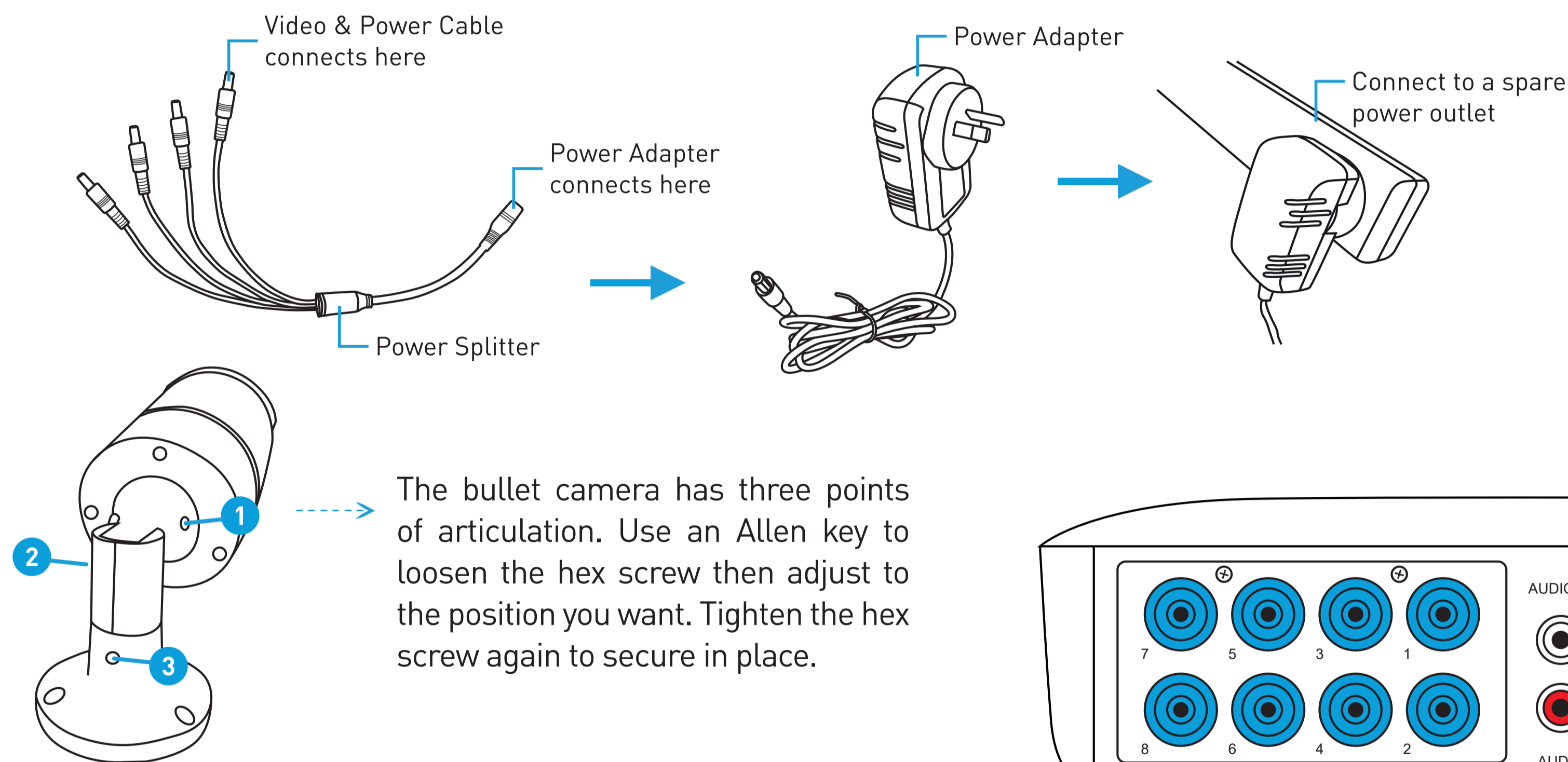
What are the additional connections for?

Audio In Port: For connecting a microphone [the microphone must have its own power source].

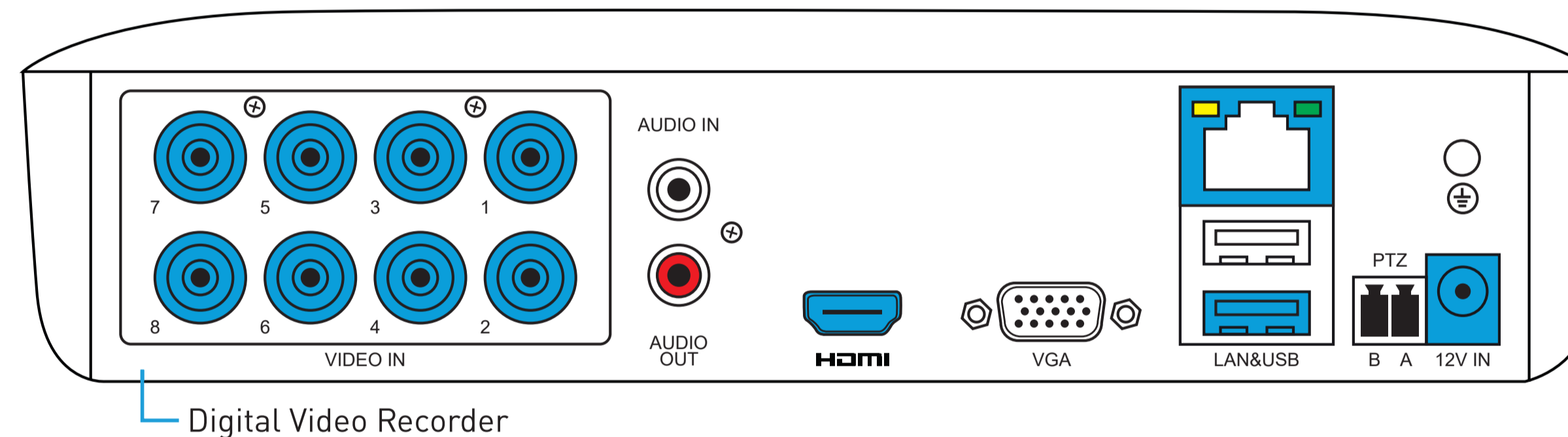
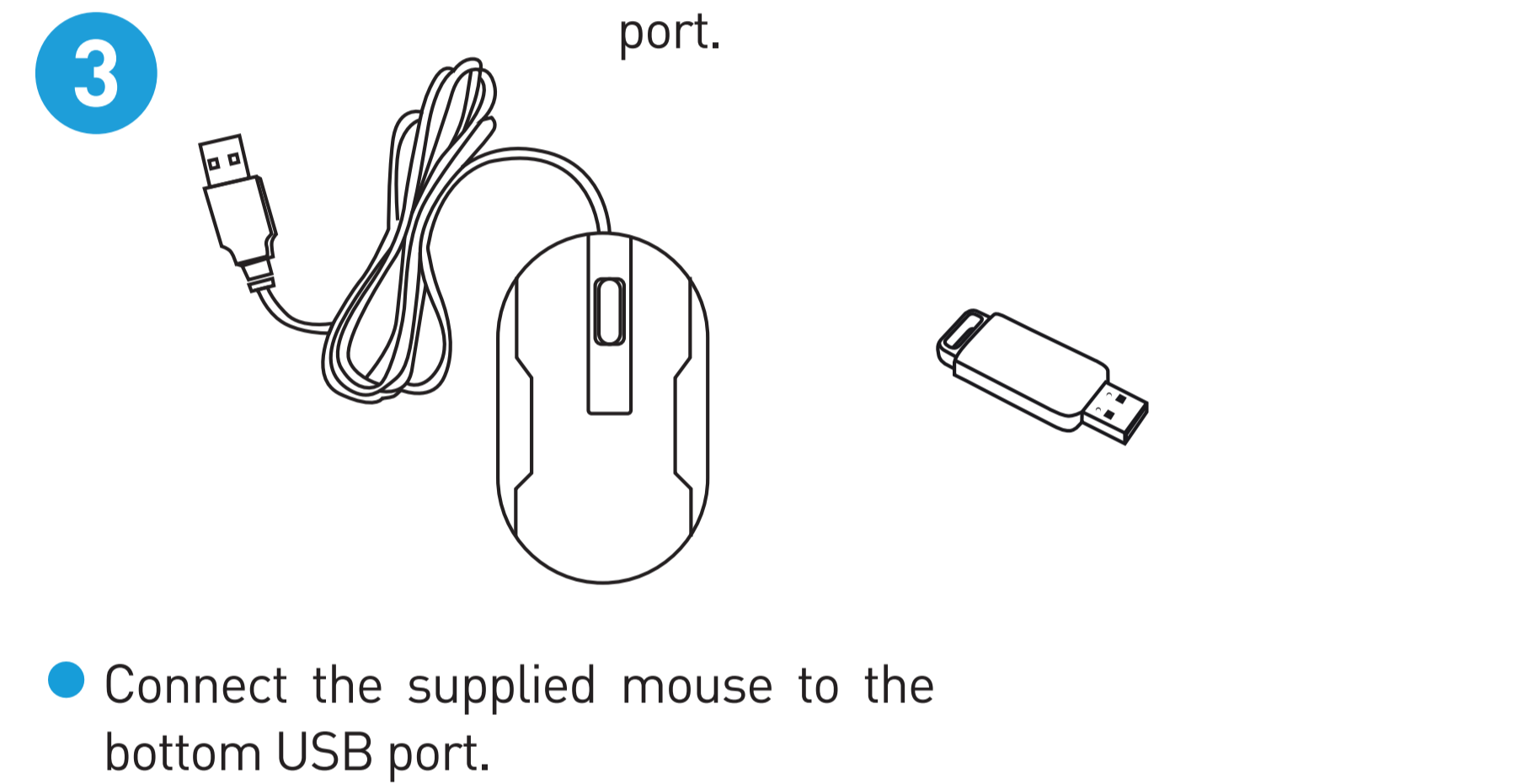
Audio Out Port: For connecting to a stereo or amplifier. This is not required when using the HDMI port.

PTZ Port: For connecting RS-485 compatible devices.

VGA Port: Connect this to your monitor with a VGA input (VGA cable not supplied). This is not required when using the HDMI port.



⚡ Your DVR is designed to ventilate air to keep it at an optimal temperature. Keep your DVR free from obstructions to allow it to ventilate properly.

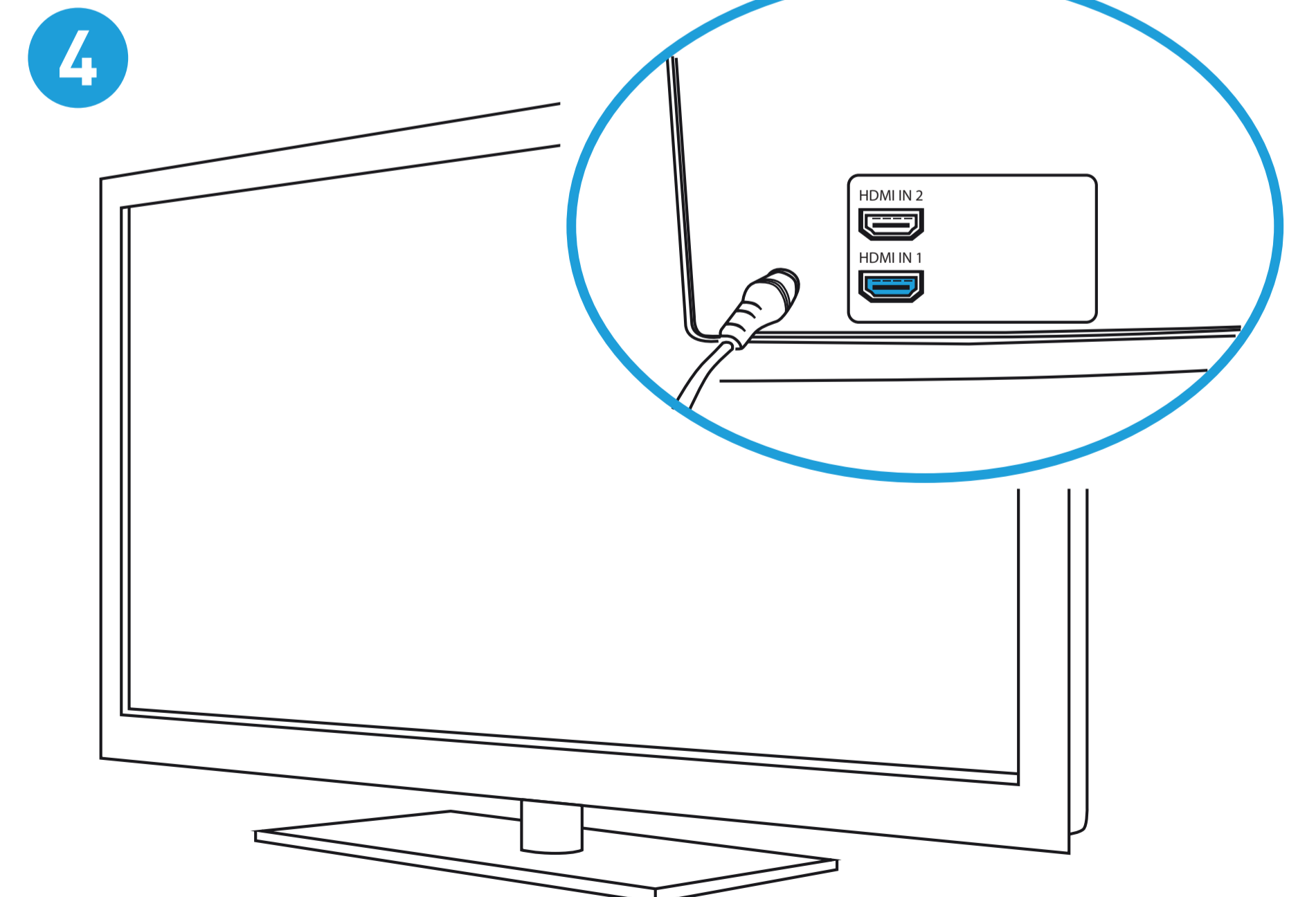
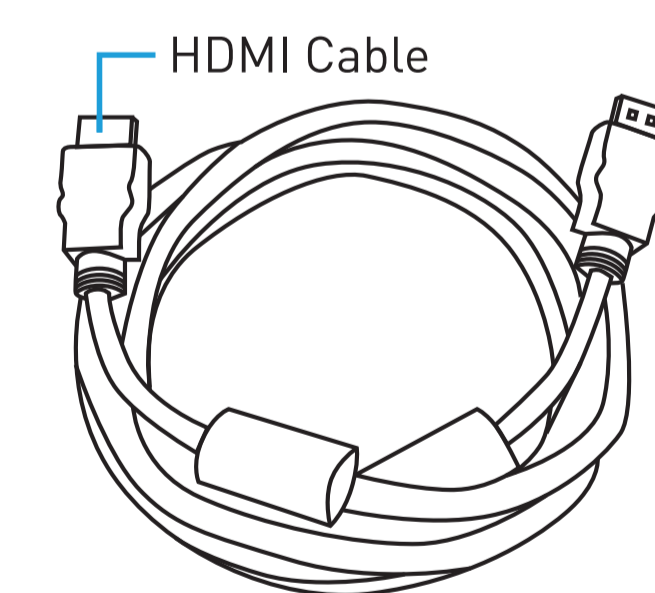


Positioning the bullet camera

To avoid damage, don't position the camera without loosening the hex screws first.

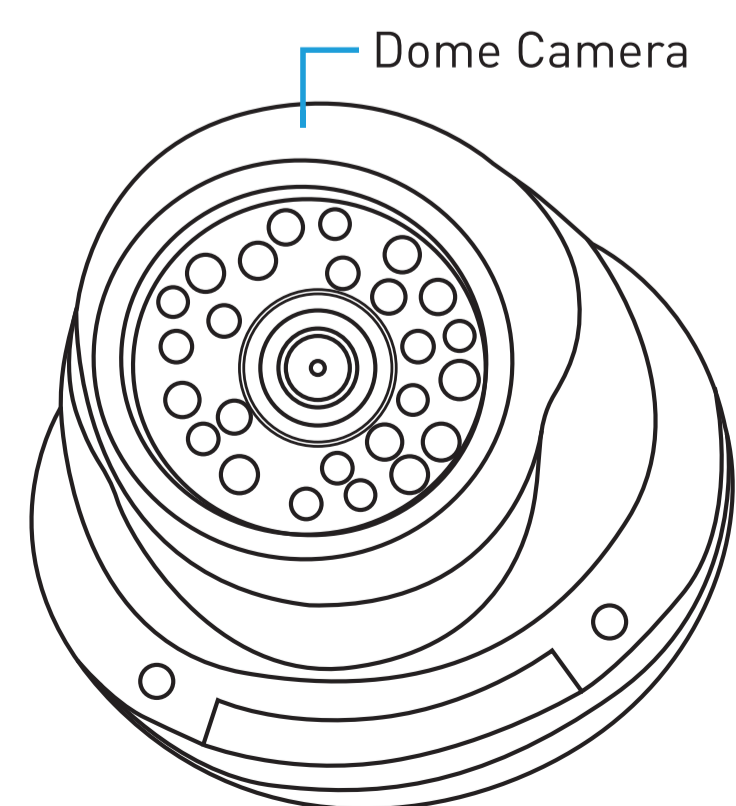
- 1) This enables you to rotate the camera left or right.
- 2) This enables you to position the camera up or down.
- 3) This enables you to rotate the camera stand left or right.

- Connect the supplied power adapter's power connection to the power input (12V IN) on your DVR first (this will minimise sparking). Connect the power adapter to a spare power outlet.



- Connect the supplied HDMI cable to the HDMI port on your DVR then connect the other end to a spare HDMI input on your TV.

📺 Press the A/V button on your TV's remote to select the HDMI input your DVR is connected to.



Mounting and aiming a dome camera

- 1) Loosen the three screws located at the base of the camera then remove the bracket cover and dome cover.
- 2) Using the appropriate screws for the surface you are mounting to, screw the bracket to fasten.
- 3) Replace the dome cover and bracket cover.
- 4) The camera can be aimed in almost any direction. After you've finished adjusting the camera's viewing position, tighten each screw to lock the position in place.

