

Hardware Installation Guide

First!

To start using your NVR, you need the following:

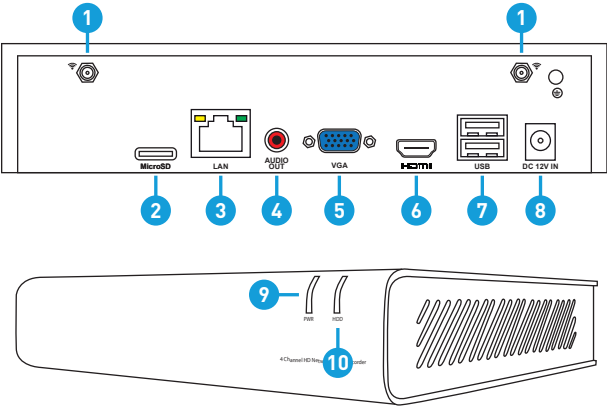
- 1. A high-definition TV capable of displaying 720p or 1080p video.
- 2. A router with a broadband internet connection.
- 3. A mobile device (Android or iOS) to download the AlwaysSafe app.



QH_490_171018GLOBAL | © Swann 2018

Step1

This installation guide will assist you on getting your NVR up and running as soon as possible. To make sure nothing was damaged during shipping, we recommend that you connect everything and try it before you do a permanent installation.

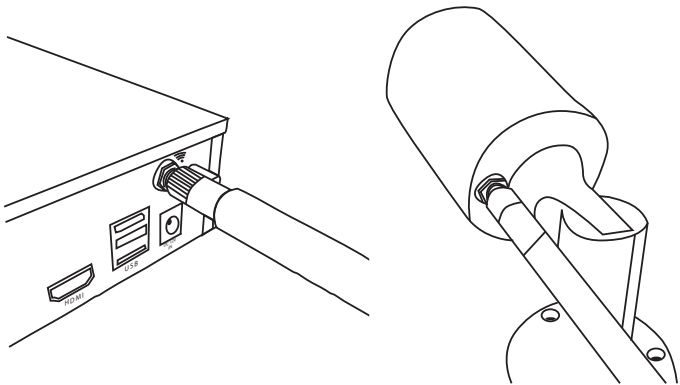


- 1. Antenna Socket
- 2. MicroSD Slot
- 3. Ethernet Port
- 4. Audio Out Port
- 5. VGA Port
- 6. HDMI Port
- 7. USB Ports
- 8. Power Port
- 9. Power LED
- 10. Hard Drive LED

Keep your NVR free from obstructions to maintain optimal temperature.

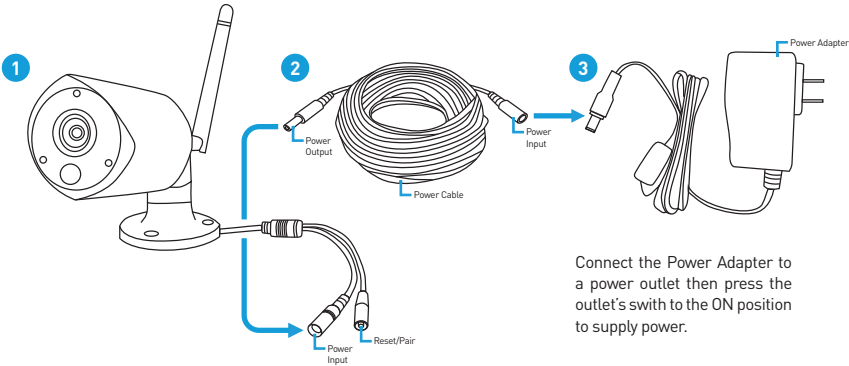
Step 2

Installing the Antennas: Use the two longer antennas on your NVR and the shorter versions for each camera. Turn the antenna base in a clockwise motion to connect. Leave the antennas in a vertical position for best reception.



Step3

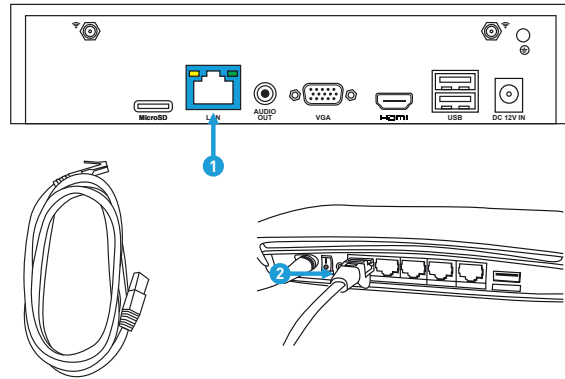
Connect your Cameras: Connect the output on the power cable to the power input on the camera. Repeat this for each camera. Connect the input on the power cable to the power adapter. Repeat this for each power adapter. The reset/pair button is used to restore factory default settings and to pair the camera to your NVR (if network settings are changed).



Connect the Power Adapter to a power outlet then press the outlet's switch to the ON position to supply power.

Step 4

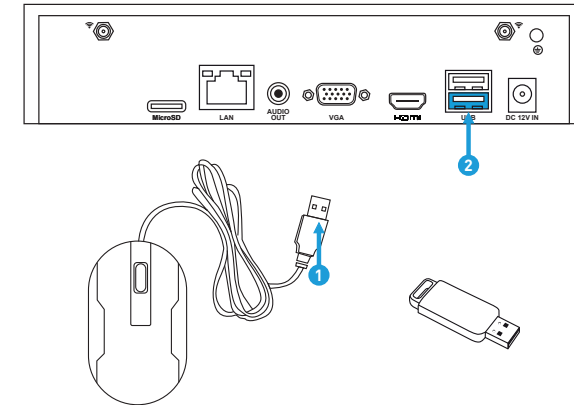
Connect to your Home Network: Connect the supplied Ethernet cable to the Ethernet port (1) on your NVR then connect the other end to a spare port (2) on your router. Don't proceed to the next step until this is done.



5

Step 5

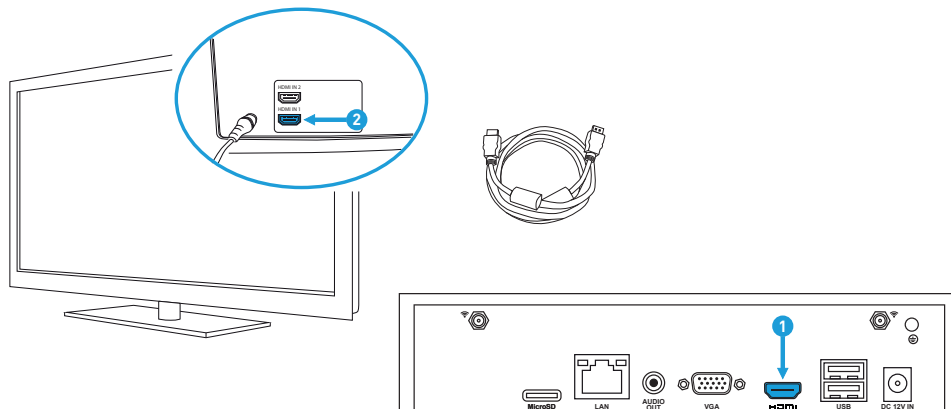
Connect your Mouse: Connect the supplied mouse (1) to the bottom USB port (2). To copy video recordings and to perform a firmware upgrade, connect a USB flash drive (not included) to the top port.



6

Step 6

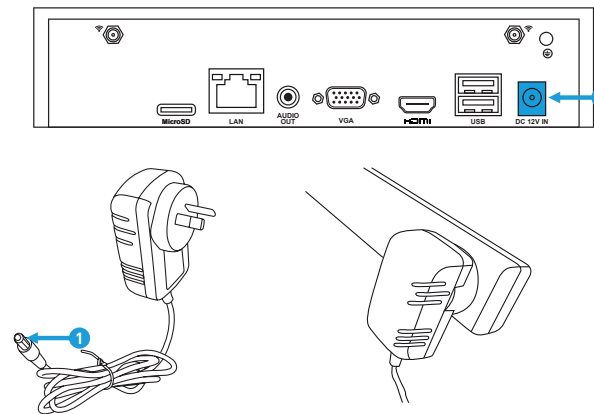
Connect to your TV: Connect the supplied HDMI cable to the HDMI port (1) then connect the other end to a spare HDMI input (2) on your TV. Press the A/V button on your TV's remote to select the HDMI input.



7

Step 7

Connect your Power Adapter: Connect the supplied power adapter's power connection (1) to the power input (2) on your NVR first (to minimize sparking). Connect the power adapter to a power outlet to supply power.



You should see the Wizard displayed. Follow the "Wizard Quick Start Guide" (the red coloured guide) to configure and setup your NVR.

8

Warning:

This device complies with Part 15 of the FCC Rules. Operation is subject to the following two conditions: (1) this device may not cause harmful interference, and (2) this device must accept any interference received, including interference that may cause undesired operation.

changes or modifications not expressly approved by the party responsible for compliance could void the user's authority to operate the equipment.

NOTE: This equipment has been tested and found to comply with the limits for a Class B digital device, pursuant to Part 15 of the FCC Rules. These limits are designed to provide reasonable protection against harmful interference in a residential installation. This equipment generates, uses and can radiate radio frequency energy and, if not installed and used in accordance with the instructions, may cause harmful interference to radio communications. However, there is no guarantee that interference will not occur in a particular installation. If this equipment does cause harmful interference to radio or television reception, which can be determined by turning the equipment off and on, the user is encouraged to try to correct the interference by one or more of the following measures:

- Reorient or relocate the receiving antenna.
- Increase the separation between the equipment and receiver.
- Connect the equipment into an outlet on a circuit different from that to which the receiver is connected.
- Consult the dealer or an experienced radio/TV technician for help.

NOTE: This device and its antenna(s) must not be co-located or operation in conjunction with any other antenna or transmitter

RF Exposure Statement

To maintain compliance with FCC's RF Exposure guidelines, This equipment should be installed and operated with minimum distance of 20cm the radiator your body. This device and its antenna(s) must not be co-located or operation in conjunction with any other antenna or transmitter