

## Technical Support

**For Windows Client & Mac Client, please download the PC software:**

<https://reolink.com/software-and-manual/>

**For advanced setup, please download the user manual:**

<https://reolink.com/software-and-manual/>

**For more troubleshooting, please go to FAQs on our website:**

<https://reolink.com/faqs/>

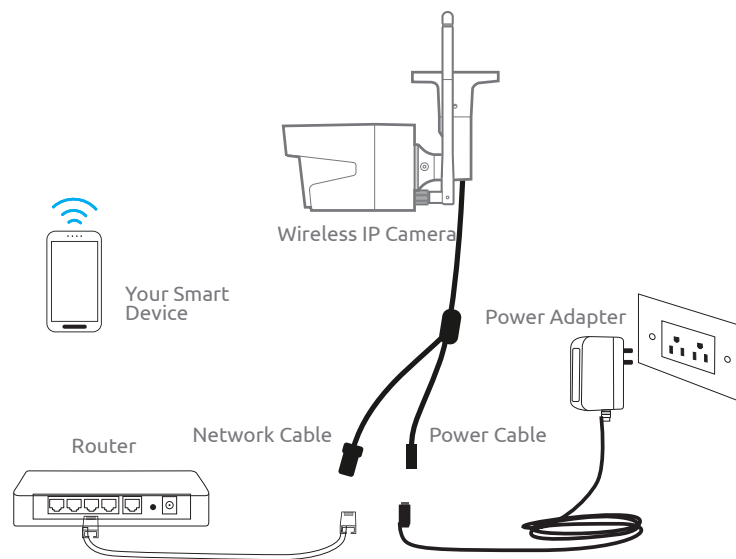
**For other technical support, please contact us at**

[support@reolink.com](mailto:support@reolink.com)

# Wireless IP Camera Quick Start Guide

QG1\_A

## Camera Connection Diagram

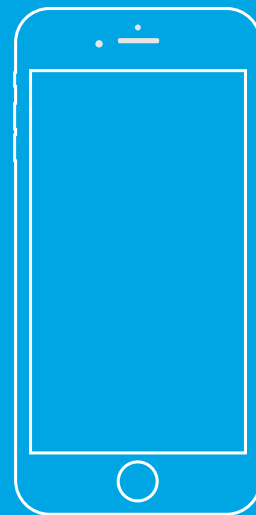


For initial setup, please connect the camera to your router LAN port with an Ethernet cable, and then follow the steps below to set up your camera. Make sure that your camera and your smart devices are in the same network.

This Quick Start Guide is applied to Reolink C1, C1 Pro, C2, RLC-410WS, RLC-411WS, RLC-422W & RLC-423WS.

# 01.

## Access the Camera by Smartphones



## Install Reolink App

There are two ways to get the Reolink App:

1. Search "Reolink" in App Store (for iOS), or Google Play (for Android), download and install the app.
2. Scan the QR code below to download and install the app.



## Add the Device

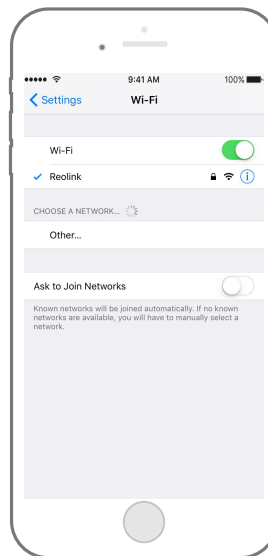
### 1 When in LAN (Local Area Network)

The camera will be automatically added.

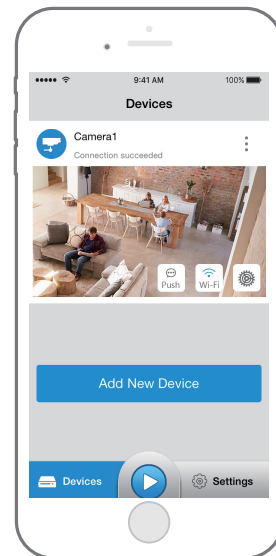
### 2 When in WAN (Wide Area Network)

You need to add the camera either by scanning the QR code on the camera or by entering the UID number manually.

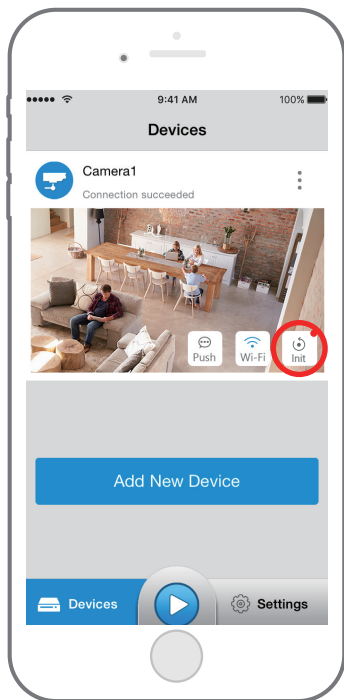
### ① In LAN




1. Connect your smartphone to the WiFi network of your router.



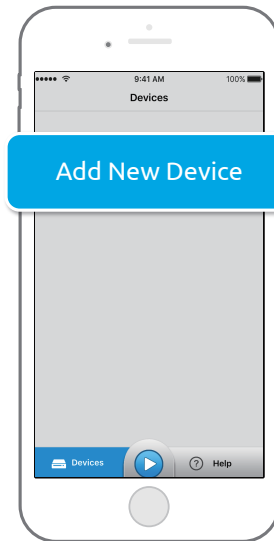
2. Launch Reolink App. The camera will automatically display in the camera list in LAN.



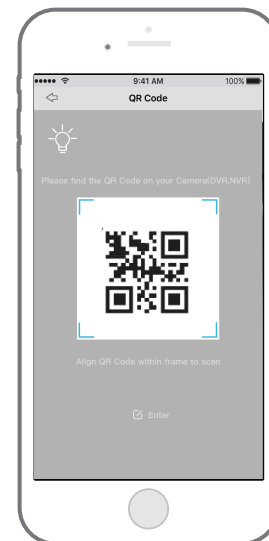
3. Tap  to sync the time and create your password.

4. Start live view or go to "Device Settings" for more configurations.

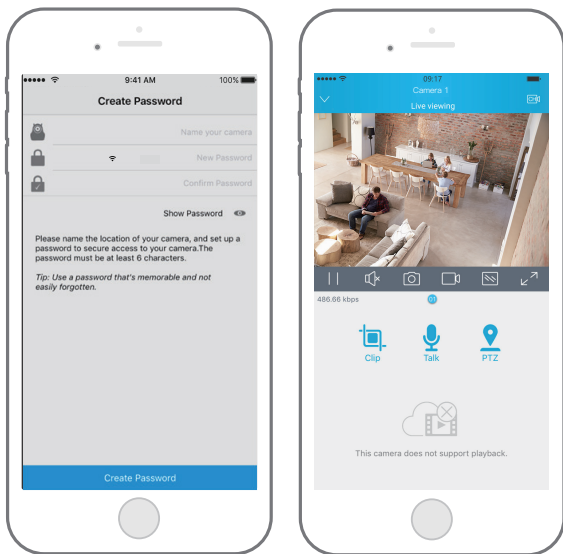
## ② In WAN



1. Click "Add New Device" on the app.



2. Scan the QR code on the camera, and then tap "Login". (There is no password at the factory default status.)



3. Name your camera, create a password, and then start live view.



This icon only displays if the camera supports 2-way audio.



This icon only displays if the camera supports pan & tilt (zoom).

## Wi-Fi Settings



Tap the Wi-Fi settings icon to enter the Wi-Fi settings page.

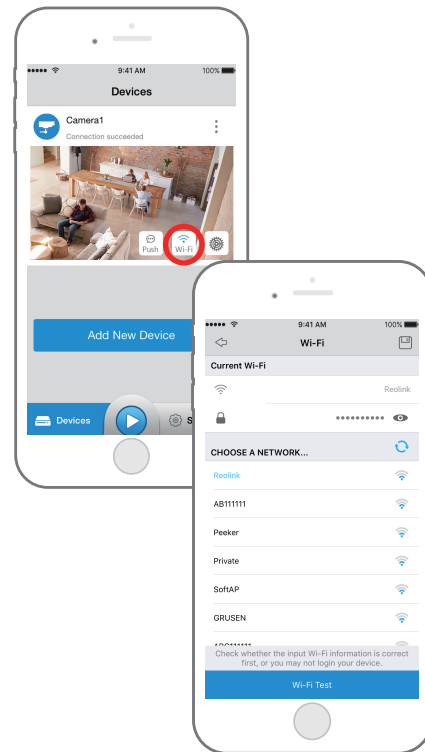
1. Choose the Wi-Fi network you want to join in, enter the password of the Wi-Fi network, and then click "OK".

2. Wi-Fi Test:

a) If the Wi-Fi test succeeds, press the "Save" button to save the settings.

b) If the Wi-Fi test fails, please check your Wi-Fi password and the network connection, and then try again.

3. Remove the Ethernet cable and then you can access the camera via the wireless connection.

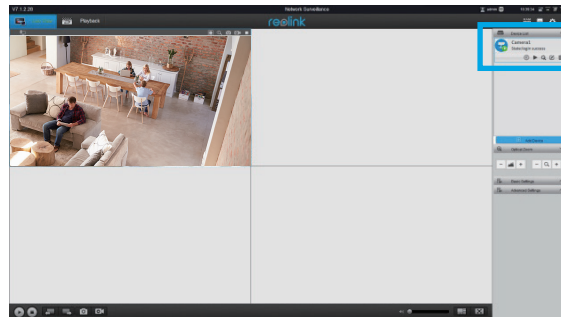


# 02.

## Access the Camera by Computer

### Install Reolink Client

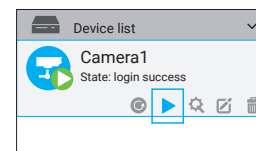
Please install the client software from the recourse CD or download it from our official website: <https://reolink.com/software-and-manual>.



### Start Live View

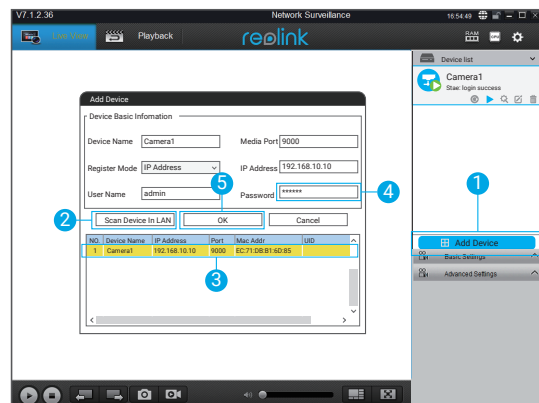
Launch the Reolink Client software on the PC. By default, the client software will automatically search the cameras in your LAN network and display them in the "Device List" on the right-side menu.

Click the "Start" button, and you can view the live streaming now.



## Add the Device

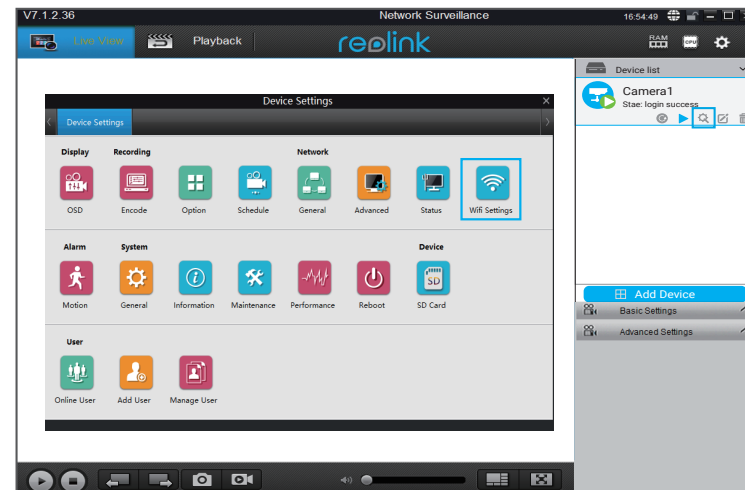
Alternatively, you can manually add the camera to the client. Please follow the steps below.



1. Click "Add Device" on the right-side menu.
2. Click "Scan Device in LAN".
3. Double click on the camera you want to add. The information will be filled in automatically.
4. Input the password for the camera. The default password is blank. If you have created the password on Reolink App, you need to use the password to log in.
5. Click "OK" to log in.

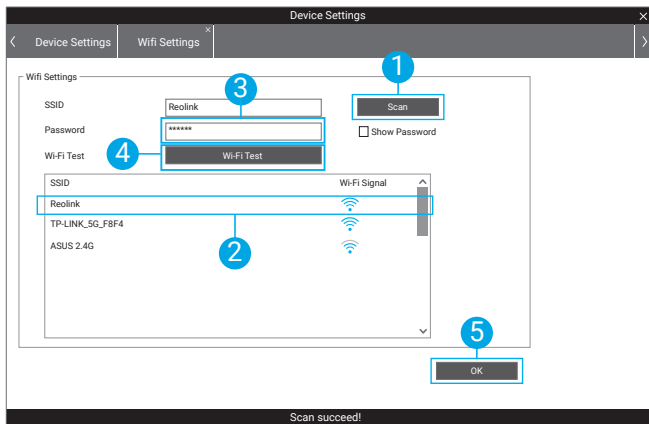
## Wi-Fi Settings

Click the "Basic Settings" button, and go to Network >> Wi-Fi Settings.



Note:

The SD card icon only displays after you've inserted the SD card into your camera.



1. Scan the SSID.
2. Double click the SSID which you choose. Enter the password.
3. Click “Wi-Fi Test” to test the password.
4. Wi-Fi Test
  - a) If the Wi-Fi test succeeds, please go to step 5.
  - b) If the Wi-Fi Test fails, please check your Wi-Fi password and the network connection, and then try again.
5. Click “OK”.

Remove the Ethernet cable and you can access the camera via Wi-Fi on computer now.

## Warning:

This device complies with Part 15 of the FCC Rules. Operation is subject to the following two conditions: (1) this device may not cause harmful interference, and (2) this device must accept any interference received, including interference that may cause undesired operation.

changes or modifications not expressly approved by the party responsible for compliance could void the user's authority to operate the equipment.

NOTE: This equipment has been tested and found to comply with the limits for a Class B digital device, pursuant to Part 15 of the FCC Rules. These limits are designed to provide reasonable protection against harmful interference in a residential installation. This equipment generates, uses and can radiate radio frequency energy and, if not installed and used in accordance with the instructions, may cause harmful interference to radio communications. However, there is no guarantee that interference will not occur in a particular installation. If this equipment does cause harmful interference to radio or television reception, which can be determined by turning the equipment off and on, the user is encouraged to try to correct the interference by one or more of the following measures:

- Reorient or relocate the receiving antenna.
- Increase the separation between the equipment and receiver.
- Connect the equipment into an outlet on a circuit different from that to which the receiver is connected.
- Consult the dealer or an experienced radio/TV technician for help.

NOTE: This device and its antenna(s) must not be co-located or operation in conjunction with any other antenna or transmitter

## RF Exposure Statement

To maintain compliance with FCC's RF Exposure guidelines, This equipment should be installed and operated with minimum distance of 20cm the radiator your body. This device and its antenna(s) must not be co-located or operation in conjunction with any other antenna or transmitter