



GLOBAL (GB/FR/ES/DE/PO/NU/IT)

MECH - LINK COMMUNICATORS

- **Parents and guardians:** Please read this entire instruction sheet before allowing children to play.
- **Parents et tuteurs :** veuillez lire complètement cette notice avant de laisser les enfants jouer.
- **Padres y tutores:** Por favor lean las instrucciones completas antes de entregar el juguete al niño
- **Etern und Erziehungsberechtigte:** Bitte lesen Sie sich die gesamte Anleitung durch, bevor Sie Ihren Kindern erlauben, mit dem Spielzeug zu spielen.
- **Pais:** por favor ler as instruções completas antes de entregar o brinquedo a criança
- **Oniters avoogden:** Geleefde dit instructieblad volledig te lezen alvorens aan het kind toestemming te geven om te spelen.
- **Guides adulti:** Leggere prima di consegnare il prodotto al bambino e conservare per futura referenza.

Each pair in package is linked, and cannot work with a unit from another pack.

DI - In order to protect the environment, please do not dispose of this product with your household waste. Please dispose of it at a designated collection facility in your area.
 FR - Pour protéger l'environnement, ne pas jeter ce produit avec des ordures ménagères; procéder à sa collecte sélective mise en dépôt dans votre région.
 ES - Para proteger el medio ambiente se urges no descharar este producto con la basura normal. Deschararlo en el punto de recogida de residuos especiales de su localidad.
 DE - Um die Umwelt zu schützen, sollte dieses Produkt nicht einfach in den Hausmüll beworfen werden. Besorgen Sie es, wenn Sie das Produkt an den bekannten öffentlichen Recycling-Sammelstellen für gefährliche Abfälle entsorgen lassen. Weitere Details: PL - W celu ochrony środowiska naturalnego prosimy nie wyrzucać tego produktu z odpadkami domowymi. Prosimy wyrzucić go do specjalnie oznaczonych kontenerów w swojej miejscowości.
 PO - Porządko ambiente. Por favor não deite este produto juntamente com o lixo doméstico. Por favor coloque-o num local adequado na sua área de residência.
 NU - Om het milieu te beschermen, gelieve dit product niet bij je gewone huishoudafval te gooien maar breng dit naar het afvalpunt.
 IT- INFORMAZIONI PER GLI UTENTORI APPARECCHI ELETTRICI. Il simbolo del cassonetto barrato segnala che l'apparecchiatura alla fine della propria vita utile non è un rifiuto generico urbano ed è consumatore di energia elettrica ed è pertanto sottile agli speciali di proprio comune di residenza a seguire norme rigorose di smaltimento al momento dell'acquisto di una nuova apparecchiatura di tipo equivalente, in ragione di uno a uno. Il corretto conferimento del rifiuto contribuisce a evitare possibili effetti negativi sull'ambiente e sulla salute. Favorendo inoltre il riciclo dei materiali di cui è composta l'apparecchiatura. Lo smaltimento abusivo del prodotto da parte dell'utente comporta l'applicazione delle sanzioni di cui costituisce normativa di legge. Per maggiori informazioni relativamente alla raccolta dei rifiuti speciali, contattare le autorità locali competenti.



CAUTION: PLEASE READ BEFORE PLAYING WITH TOY - ATTENTION: A LIRE AVANT D'UTILISER LE JOUET - ADVERTENCIA: POR FAVOR LEER ANTES DE JUGAR CON EL JUGUETE
ACHTUNG: BITTE VOR GEBRAUCH DES SPIELZEUGS DURCHLESEN - UWAGA: PROSIMY PRZECZYTAĆ PEWNOŚC UWAG PRZEDCZCZĄC ZABAWĄ - AVISO: POR FAVOR LER ANTES DE BRINCAR COM O BRINQUEDO - VARSCHUWUNG: GELIEBE TE LIZEN ALVORENS MET HET SPEELGOED TE SPELEN - AWFERTUNG: LEGGERE PRIMA D'INIZIARE A GIOCARE

GB - Do not 1) aim to injure anyone, 2) hit anyone with toy, 3) poke anyone with toy, 4) swing toy at anyone, or 5) step on toy as it may result in serious injury. - Be careful not to pinch fingers with hinges part of toy. - FR - Ne pas 1) viser quelqu'un avec le jouet, 2) frapper quelqu'un avec le jouet, 3) piquer quelqu'un avec le jouet, 4) lancer le jouet ou le jeter sur quelqu'un ou 5) marcher sur le jouet car cela pourrait causer de graves blessures. - Faire attention de ne pas se pincer les doigts avec les parties articulées du jouet. - ES - No apuntes a nadie con el juguete 2) No golpees a nadie con el juguete 3) No pisotes a nadie con el juguete 4) No lanzes el juguete 5) No andamines con el juguete. - Ten cuidado de no pellar los dedos con las partes móviles del juguete. - DE - Mit dem Spielzeug 1) auf niemanden zielen, 2) niemanden schlagen, 3) niemanden piksen, 4) niemandem entgegenzuwerfen oder zu stoßen, 5) auf jemandem zu treten. - Niemanden mit dem Spielzeug 2) auf jemanden zu schlagen, 3) jemanden piksen, 4) auf jemandem zu werfen oder zu stoßen, 5) auf jemandem zu treten. - Aufpassen, dass die Finger nicht in den Gelenken des Spielzeugs eingeklemmt werden. - PL - Nie należy 1) celować w nikogo zabawką, 2) uderzać nikogo zabawką 3) popychać nikogo zabawką 4) machać zabawką 5) deptać po zabawkę, ponieważ może to spowodować poważne urazy ciała. - Należy uważać, aby nie przysrzasać palców pomiędzy ruchomymi częściami zabawki - PO - 1) Não apuntes a ninguém com o brinquedo 3) Não pisar a ninguém com o brinquedo 4) Não balançar o brinquedo sobre ninguém 5) Não pisar a ninguém, podendo causar um acidente e estragar-lho. - Ter cuidado de não apertar os dedos com as partes móveis do brinquedo. - NL - Niet 1) Het speelgoed naar iemand richten, 2) Iemand slaan met het speelgoed 3) Iemand pikken met het speelgoed, 4) Het speelgoed naar iemand gooien, of 5) Gaan trappen op het speelgoed. Let op dat je je vingens niet knel tussen de verschillende details van het speelgoed. - IT - Non puntare il giocattolo verso nessuno. 2) Non colpire nessuno con il giocattolo. 3) Non pungere nessuno con il giocattolo. 4) Non lanciare contro nessuno. 5) Prestare attenzione a non pizzicare le dita nelle giunture del giocattolo. 6) Non calpestare il giocattolo. 7) Non lanciare i personaggi contro persone e animali. 8) Non usare i personaggi come oggetti da lanciare. 9) Non usare altri oggetti che non sono previsti da questo giocattolo.

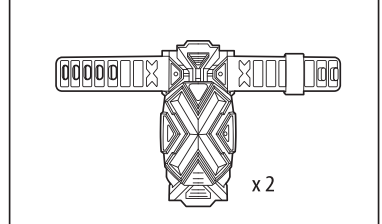
WARNING: CHOKING HAZARD - Small parts. Not for children under 3 years.

AVERTISSEMENT: RISQUE D'ÉTOUFFEMENT - Petites pièces. Ne convient pas aux enfants de moins de 3 ans.

ADVERTENCIA: PELIGRO DE ATRAGANTARSE - Piezas pequeñas. No se recomienda para niños menores de 3 años.

CONTENTS / CONTENU / CONTENIDO / INHALT / CONTEÚDO / INHOUD / CONTENUTO

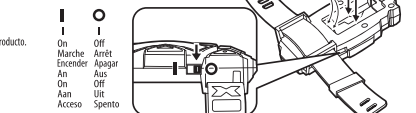
HOW TO REPLACE BATTERIES / COMMENT CHANGER LES PILES / CÓMO CAMBIAR LAS PILAS / ERSETZEN DER BATTERIEN / CÓMO TROCAR AS PILHAS / ZO VERVANG JE DE BATTERIJEN / COME SOSTITUIRE LE BATTERIE



1. Using a small screwdriver (not included) turn the screw counterclockwise to remove. Remove back as shown and place batteries into battery compartment. NOTE: Make sure you use new batteries.
1. Utiliser un petit tournevis (non inclus) et dévisser le couvercle. Retirer le couvercle tel que montré et insérer les piles dans le compartiment à piles. REMARQUE: Il est important d'utiliser des piles neuves.
1. Usando un destornillador pequeño (no incluido), girar en sentido contrario a las agujas del reloj para aflojar. Retirar la tapa como se muestra y colocar las pilas en su compartimento correspondiente. NOTA: Es importante usar pilas nuevas.
1. Die Schraube mit einem kleinen Schraubenzieher (nicht enthalten) gegen den Uhrzeigersinn herausdrehen, um sie zu lösen. Rückseite wie abgebildet entfernen und die Batterien in das Batteriefach einlegen. HINWEIS: Sicherstellen, dass neue Batterien verwendet werden.
1. Utilizar um chave de parafusos (não incluído) girar em sentido contrário as agulhas do relógio para desparafar. Retirar a tampa e colocar as pilhas no seu compartimento. NOTA: Usar sempre pilhas novas.
1. Met een kleine schroevendraaier (niet inbegrepen) de schroef tegen de wijzers van de klok in draaien om de dop te lossen. Verwijder achteraf ook zoals afgebeeld in plaats van batterijen in het batterijvak. OPMERK: altijd nieuwe batterijen gebruiken.
1. Usando un piccolo cacciavite (nonincludo) girare la vite in senso antiorario per rimuoverla. Rimuovere come mostrato e posizionare le batterie nel vano. NOTA: Usare nuove batterie.
2. Insert 4 AAA(1.5 V) batteries making sure you match the + and - indicators.
2. Insérer 4 piles AAA(1.5 V) en faisant attention aux polarités.
2. Colocar 4 pilas AAA(1.5 V) asegurándose de que los indicadores + y - se correspondan.
2. Legen Sie 4 AAA(1.5 V) Batterien gemäß der + und - Anzeige ein.
2. Colocar 4 pilas AAA(1.5 V) com a segurança de que os indicadores + e - correspondam.
2. Pláts 4 AAA(1.5 V) batterien in let op de polariteit + en - in.
2. Inserir 4 AAA (1,5 V) respetando la careta polaridad + / -.
3. Replace battery cover and replace screw with screwdriver. Turn screw clockwise to tighten.
3. Remplacer le couvercle et revisser dans le sens des aiguilles d'une montre pour fermer.
3. Reemplazar la tapa y tornillo con el destornillador. Girar el tornillo.
3. Einschalten und schon kann es losgehen.
3. Bringen Sie die Abdeckung des Batteriebaus wieder an und schrauben Sie die Schraube mit dem Schraubenzieher wieder ein. Ziehen Sie die Schraube im Uhrzeigersinn fest.
3. Colocar a tampa de novo. Girar o destornillador em sentido das agulhas do relógio para apertá-lo.
3. Pláts het batterijdeksel terug. Draai de schroef in de richting van de klok om vast te maken.
3. Rimettere a postoi copertina battete e rimettere la vite con un cacciavite. Girare la vite in senso orario per stringere.

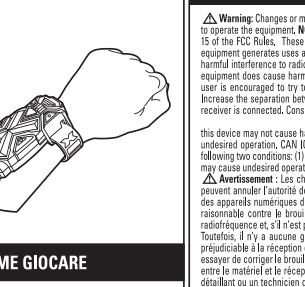
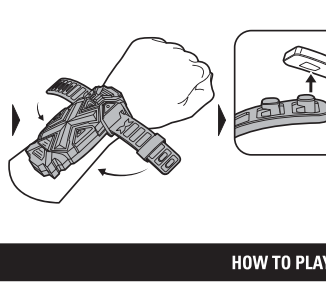
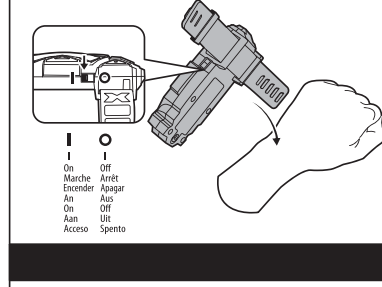
4. Turn the switch to ON and you are ready to play.
4. Positionner le bouton du son sur ON pour jouer.
4. Poner el interruptor en modo Encendido y estará listo para jugar.
4. Einschalten und schon kann es losgehen.
4. For highest production/ battery performance with Earbuds/ earphones.
4. Zet de schakelaar op AAN en je bent klaar te spelen.
4. Spaziate l'interruttore su ON e siete pronti a giocare.
5. Replace with new batteries upon initial use for best product performance.
5. Cambiar las pilas por unas nuevas de la primera utilización.
5. Für höchste Produktleistung/ Batterieperformance mit Earbuds/ earphones.
5. Trocar as pilhas por umas novas para melhorar o funcionamento do produto.
5. Voor optimale productprestaties/ batterijprestaties met oortelefoon/ oortelefoon. 5. Sostituir con nuove batterie dopo l'utilizzo iniziale per ottenere migliori performance.

Adult assembly required. Un adulte doit effectuer l'assemblage. Un adulto debe realizar el ensamblaje. Zusammenbau durch Erwachsene erforderlich. Um adulto deve fazer a montagem. Montage dient door volwassen te gebeuren. E richiesta l'assembaggio da parte di un adulto.



HOW TO PLAY / COMMENT JOUER / CÓMO JUGAR / SO WIRD GESPIELT / CÓMO JOGAR / ZO SPEEL JE / COME GIOCARE

HOW TO PLAY / COMMENT JOUER / CÓMO JUGAR / SO WIRD GESPIELT / CÓMO JOGAR / ZO SPEEL JE / COME GIOCARE



DISCLAIMER / RENONCIATION / DESCARGO DE RESPONSABILIDAD
 Warning: Changes or modifications to this unit not expressly approved by the party responsible for compliance could void the user's authority to operate the equipment. NOTE: This equipment has been tested and found to comply with the limits for a Class B digital device, pursuant to Part 15 of the FCC Rules. These limits are designed to provide reasonable protection against harmful interference in a residential installation. This equipment generates uses and can radiate radio frequency energy and, if not installed and used in accordance with the instructions, may cause harmful interference to radio communications. However, there is no guarantee that interference will not occur in a particular installation. If this equipment does cause harmful interference to radio or television reception, which can be determined by turning the equipment off and on, the user is encouraged to try to correct the interference by one or more of the following measures: Reorient or relocate the receiving antenna. Increase the separation between the equipment and receiver. Connect the equipment into an outlet on a circuit different from that to which the receiver is connected. Consult the dealer or an experienced radio TV technician for help.
 This device complies with Part 15 of the FCC Rules. Operation is subject to the following two conditions: (1) This device may not cause interference, and (2) This device must accept any interference received, including interference that may cause undesired operation of the device.
 This device may not cause harmful interference, and (2) This device must accept any interference received, including interference that may cause undesired operation of the device.
 This device complies with Part 15 of the FCC Rules. Operation is subject to the following two conditions: (1) This device may not cause interference, and (2) This device must accept any interference received, including interference that may cause undesired operation of the device.
 This device complies with Part 15 of the FCC Rules. Operation is subject to the following two conditions: (1) This device may not cause interference, and (2) This device must accept any interference received, including interference that may cause undesired operation of the device.
 This device complies with Part 15 of the FCC Rules. Operation is subject to the following two conditions: (1) This device may not cause interference, and (2) This device must accept any interference received, including interference that may cause undesired operation of the device.
 This device complies with Part 15 of the FCC Rules. Operation is subject to the following two conditions: (1) This device may not cause interference, and (2) This device must accept any interference received, including interference that may cause undesired operation of the device.
 This device complies with Part 15 of the FCC Rules. Operation is subject to the following two conditions: (1) This device may not cause interference, and (2) This device must accept any interference received, including interference that may cause undesired operation of the device.
 This device complies with Part 15 of the FCC Rules. Operation is subject to the following two conditions: (1) This device may not cause interference, and (2) This device must accept any interference received, including interference that may cause undesired operation of the device.
 This device complies with Part 15 of the FCC Rules. Operation is subject to the following two conditions: (1) This device may not cause interference, and (2) This device must accept any interference received, including interference that may cause undesired operation of the device.
 This device complies with Part 15 of the FCC Rules. Operation is subject to the following two conditions: (1) This device may not cause interference, and (2) This device must accept any interference received, including interference that may cause undesired operation of the device.
 This device complies with Part 15 of the FCC Rules. Operation is subject to the following two conditions: (1) This device may not cause interference, and (2) This device must accept any interference received, including interference that may cause undesired operation of the device.
 This device complies with Part 15 of the FCC Rules. Operation is subject to the following two conditions: (1) This device may not cause interference, and (2) This device must accept any interference received, including interference that may cause undesired operation of the device.
 This device complies with Part 15 of the FCC Rules. Operation is subject to the following two conditions: (1) This device may not cause interference, and (2) This device must accept any interference received, including interference that may cause undesired operation of the device.
 This device complies with Part 15 of the FCC Rules. Operation is subject to the following two conditions: (1) This device may not cause interference, and (2) This device must accept any interference received, including interference that may cause undesired operation of the device.
 This device complies with Part 15 of the FCC Rules. Operation is subject to the following two conditions: (1) This device may not cause interference, and (2) This device must accept any interference received, including interference that may cause undesired operation of the device.
 This device complies with Part 15 of the FCC Rules. Operation is subject to the following two conditions: (1) This device may not cause interference, and (2) This device must accept any interference received, including interference that may cause undesired operation of the device.
 This device complies with Part 15 of the FCC Rules. Operation is subject to the following two conditions: (1) This device may not cause interference, and (2) This device must accept any interference received, including interference that may cause undesired operation of the device.
 This device complies with Part 15 of the FCC Rules. Operation is subject to the following two conditions: (1) This device may not cause interference, and (2) This device must accept any interference received, including interference that may cause undesired operation of the device.
 This device complies with Part 15 of the FCC Rules. Operation is subject to the following two conditions: (1) This device may not cause interference, and (2) This device must accept any interference received, including interference that may cause undesired operation of the device.
 This device complies with Part 15 of the FCC Rules. Operation is subject to the following two conditions: (1) This device may not cause interference, and (2) This device must accept any interference received, including interference that may cause undesired operation of the device.
 This device complies with Part 15 of the FCC Rules. Operation is subject to the following two conditions: (1) This device may not cause interference, and (2) This device must accept any interference received, including interference that may cause undesired operation of the device.
 This device complies with Part 15 of the FCC Rules. Operation is subject to the following two conditions: (1) This device may not cause interference, and (2) This device must accept any interference received, including interference that may cause undesired operation of the device.
 This device complies with Part 15 of the FCC Rules. Operation is subject to the following two conditions: (1) This device may not cause interference, and (2) This device must accept any interference received, including interference that may cause undesired operation of the device.
 This device complies with Part 15 of the FCC Rules. Operation is subject to the following two conditions: (1) This device may not cause interference, and (2) This device must accept any interference received, including interference that may cause undesired operation of the device.
 This device complies with Part 15 of the FCC Rules. Operation is subject to the following two conditions: (1) This device may not cause interference, and (2) This device must accept any interference received, including interference that may cause undesired operation of the device.
 This device complies with Part 15 of the FCC Rules. Operation is subject to the following two conditions: (1) This device may not cause interference, and (2) This device must accept any interference received, including interference that may cause undesired operation of the device.
 This device complies with Part 15 of the FCC Rules. Operation is subject to the following two conditions: (1) This device may not cause interference, and (2) This device must accept any interference received, including interference that may cause undesired operation of the device.
 This device complies with Part 15 of the FCC Rules. Operation is subject to the following two conditions: (1) This device may not cause interference, and (2) This device must accept any interference received, including interference that may cause undesired operation of the device.
 This device complies with Part 15 of the FCC Rules. Operation is subject to the following two conditions: (1) This device may not cause interference, and (2) This device must accept any interference received, including interference that may cause undesired operation of the device.
 This device complies with Part 15 of the FCC Rules. Operation is subject to the following two conditions: (1) This device may not cause interference, and (2) This device must accept any interference received, including interference that may cause undesired operation of the device.
 This device complies with Part 15 of the FCC Rules. Operation is subject to the following two conditions: (1) This device may not cause interference, and (2) This device must accept any interference received, including interference that may cause undesired operation of the device.
 This device complies with Part 15 of the FCC Rules. Operation is subject to the following two conditions: (1) This device may not cause interference, and (2) This device must accept any interference received, including interference that may cause undesired operation of the device.
 This device complies with Part 15 of the FCC Rules. Operation is subject to the following two conditions: (1) This device may not cause interference, and (2) This device must accept any interference received, including interference that may cause undesired operation of the device.
 This device complies with Part 15 of the FCC Rules. Operation is subject to the following two conditions: (1) This device may not cause interference, and (2) This device must accept any interference received, including interference that may cause undesired operation of the device.
 This device complies with Part 15 of the FCC Rules. Operation is subject to the following two conditions: (1) This device may not cause interference, and (2) This device must accept any interference received, including interference that may cause undesired operation of the device.
 This device complies with Part 15 of the FCC Rules. Operation is subject to the following two conditions: (1) This device may not cause interference, and (2) This device must accept any interference received, including interference that may cause undesired operation of the device.
 This device complies with Part 15 of the FCC Rules. Operation is subject to the following two conditions: (1) This device may not cause interference, and (2) This device must accept any interference received, including interference that may cause undesired operation of the device.
 This device complies with Part 15 of the FCC Rules. Operation is subject to the following two conditions: (1) This device may not cause interference, and (2) This device must accept any interference received, including interference that may cause undesired operation of the device.
 This device complies with Part 15 of the FCC Rules. Operation is subject to the following two conditions: (1) This device may not cause interference, and (2) This device must accept any interference received, including interference that may cause undesired operation of the device.
 This device complies with Part 15 of the FCC Rules. Operation is subject to the following two conditions: (1) This device may not cause interference, and (2) This device must accept any interference received, including interference that may cause undesired operation of the device.
 This device complies with Part 15 of the FCC Rules. Operation is subject to the following two conditions: (1) This device may not cause interference, and (2) This device must accept any interference received, including interference that may cause undesired operation of the device.
 This device complies with Part 15 of the FCC Rules. Operation is subject to the following two conditions: (1) This device may not cause interference, and (2) This device must accept any interference received, including interference that may cause undesired operation of the device.
 This device complies with Part 15 of the FCC Rules. Operation is subject to the following two conditions: (1) This device may not cause interference, and (2) This device must accept any interference received, including interference that may cause undesired operation of the device.
 This device complies with Part 15 of the FCC Rules. Operation is subject to the following two conditions: (1) This device may not cause interference, and (2) This device must accept any interference received, including interference that may cause undesired operation of the device.
 This device complies with Part 15 of the FCC Rules. Operation is subject to the following two conditions: (1) This device may not cause interference, and (2) This device must accept any interference received, including interference that may cause undesired operation of the device.
 This device complies with Part 15 of the FCC Rules. Operation is subject to the following two conditions: (1) This device may not cause interference, and (2) This device must accept any interference received, including interference that may cause undesired operation of the device.
 This device complies with Part 15 of the FCC Rules. Operation is subject to the following two conditions: (1) This device may not cause interference, and (2) This device must accept any interference received, including interference that may cause undesired operation of the device.
 This device complies with Part 15 of the FCC Rules. Operation is subject to the following two conditions: (1) This device may not cause interference, and (2) This device must accept any interference received, including interference that may cause undesired operation of the device.
 This device complies with Part 15 of the FCC Rules. Operation is subject to the following two conditions: (1) This device may not cause interference, and (2) This device must accept any interference received, including interference that may cause undesired operation of the device.
 This device complies with Part 15 of the FCC Rules. Operation is subject to the following two conditions: (1) This device may not cause interference, and (2) This device must accept any interference received, including interference that may cause undesired operation of the device.
 This device complies with Part 15 of the FCC Rules. Operation is subject to the following two conditions: (1) This device may not cause interference, and (2) This device must accept any interference received, including interference that may cause undesired operation of the device.
 This device complies with Part 15 of the FCC Rules. Operation is subject to the following two conditions: (1) This device may not cause interference, and (2) This device must accept any interference received, including interference that may cause undesired operation of the device.
 This device complies with Part 15 of the FCC Rules. Operation is subject to the following two conditions: (1) This device may not cause interference, and (2) This device must accept any interference received, including interference that may cause undesired operation of the device.
 This device complies with Part 15 of the FCC Rules. Operation is subject to the following two conditions: (1) This device may not cause interference, and (2) This device must accept any interference received, including interference that may cause undesired operation of the device.
 This device complies with Part 15 of the FCC Rules. Operation is subject to the following two conditions: (1) This device may not cause interference, and (2) This device must accept any interference received, including interference that may cause undesired operation of the device.
 This device complies with Part 15 of the FCC Rules. Operation is subject to the following two conditions: (1) This device may not cause interference, and (2) This device must accept any interference received, including interference that may cause undesired operation of the device.
 This device complies with Part 15 of the FCC Rules. Operation is subject to the following two conditions: (1) This device may not cause interference, and (2) This device must accept any interference received, including interference that may cause undesired operation of the device.
 This device complies with Part 15 of the FCC Rules. Operation is subject to the following two conditions: (1) This device may not cause interference, and (2) This device must accept any interference received, including interference that may cause undesired operation of the device.
 This device complies with Part 15 of the FCC Rules. Operation is subject to the following two conditions: (1) This device may not cause interference, and (2) This device must accept any interference received, including interference that may cause undesired operation of the device.
 This device complies with Part 15 of the FCC Rules. Operation is subject to the following two conditions: (1) This device may not cause interference, and (2) This device must accept any interference received, including interference that may cause undesired operation of the device.
 This device complies with Part 15 of the FCC Rules. Operation is subject to the following two conditions: (1) This device may not cause interference, and (2) This device must accept any interference received, including interference that may cause undesired operation of the device.
 This device complies with Part 15 of the FCC Rules. Operation is subject to the following two conditions: (1) This device may not cause interference, and (2) This device must accept any interference received, including interference that may cause undesired operation of the device.
 This device complies with Part 15 of the FCC Rules. Operation is subject to the following two conditions: (1) This device may not cause interference, and (2) This device must accept any interference received, including interference that may cause undesired operation of the device.
 This device complies with Part 15 of the FCC Rules. Operation is subject to the following two conditions: (1) This device may not cause interference, and (2) This device must accept any interference received, including interference that may cause undesired operation of the device.
 This device complies with Part 15 of the FCC Rules. Operation is subject to the following two conditions: (1) This device may not cause interference, and (2) This device must accept any interference received, including interference that may cause undesired operation of the device.
 This device complies with Part 15 of the FCC Rules. Operation is subject to the following two conditions: (1) This device may not cause interference, and (2) This device must accept any interference received, including interference that may cause undesired operation of the device.
 This device complies with Part 15 of the FCC Rules. Operation is subject to the following two conditions: (1) This device may not cause interference, and (2) This device must accept any interference received, including interference that may cause undesired operation of the device.
 This device complies with Part 15 of the FCC Rules. Operation is subject to the following two conditions: (1) This device may not cause interference, and (2) This device must accept any interference received, including interference that may cause undesired operation of the device.
 This device complies with Part 15 of the FCC Rules. Operation is subject to the following two conditions: (1) This device may not cause interference, and (2) This device must accept any interference received, including interference that may cause undesired operation of the device.
 This device complies with Part 15 of the FCC Rules. Operation is subject to the following two conditions: (1) This device may not cause interference, and (2) This device must accept any interference received, including interference that may cause undesired operation of the device.
 This device complies with Part 15 of the FCC Rules. Operation is subject to the following two conditions: (1) This device may not cause interference, and (2) This device must accept any interference received, including interference that may cause undesired operation of the device.
 This device complies with Part 15 of the FCC Rules. Operation is subject to the following two conditions: (1) This device may not cause interference, and (2) This device must accept any interference received, including interference that may cause undesired operation of the device.
 This device complies with Part 15 of the FCC Rules. Operation is subject to the following two conditions: (1) This device may not cause interference, and (2) This device must accept any interference received, including interference that may cause undesired operation of the device.
 This device complies with Part 15 of the FCC Rules. Operation is subject to the following two conditions: (1) This device may not cause interference, and (2) This device must accept any interference received, including interference that may cause undesired operation of the device.
 This device complies with Part 15 of the FCC Rules. Operation is subject to the following two conditions: (1) This device may not cause interference, and (2) This device must accept any interference received, including interference that may cause undesired operation of the device.
 This device complies with Part 15 of the FCC Rules. Operation is subject to the following two conditions: (1) This device may not cause interference, and (2) This device must accept any interference received, including interference that may cause undesired operation of the device.
 This device complies with Part 15 of the FCC Rules. Operation is subject to the following two conditions: (1) This device may not cause interference, and (2) This device must accept any interference received, including interference that may cause undesired operation of the device.
 This device complies with Part 15 of the FCC Rules. Operation is subject to the following two conditions: (1) This device may not cause interference, and (2) This device must accept any interference received, including interference that may cause undesired operation of the device.
 This device complies with Part 15 of the FCC Rules. Operation is subject to the following two conditions: (1) This device may not cause interference, and (2) This device must accept any interference received, including interference that may cause undesired operation of the device.
 This device complies with Part 15 of the FCC Rules. Operation is subject to the following two conditions: (1) This device may not cause interference, and (2) This device must accept any interference received, including interference that may cause undesired operation of the device.
 This device complies with Part 15 of the FCC Rules. Operation is subject to the following two conditions: (1) This device may not cause interference, and (2) This device must accept any interference received, including interference that may cause undesired operation of the device.
 This device complies with Part 15 of the FCC Rules. Operation is subject to the following two conditions: (1) This device may not cause interference, and (2) This device must accept any interference received, including interference that may cause undesired operation of the device.
 This device complies with Part 15 of the FCC Rules. Operation is subject to the following two conditions: (1) This device may not cause interference, and (2) This device must accept any interference received, including interference that may cause undesired operation of the device.
 This device complies with Part 15 of the FCC Rules. Operation is subject to the following two conditions: (1) This device may not cause interference, and (2) This device must accept any interference received, including interference that may cause undesired operation of the device.
 This device complies with Part 15 of the FCC Rules. Operation is subject to the following two conditions: (1) This device may not cause interference, and (2) This device must accept any interference received, including interference that may cause undesired operation of the device.
 This device complies with Part 15 of the FCC Rules. Operation is subject to the following two conditions: (1) This device may not cause interference, and (2) This device must accept any interference received, including interference that may cause undesired operation of the device.
 This device complies with Part 15 of the FCC Rules. Operation is subject to the following two conditions: (1) This device may not cause interference, and (2) This device must accept any interference received, including interference that may cause undesired operation of the device.
 This device complies with Part 15 of the FCC Rules. Operation is subject to the following two conditions: (1) This device may not cause interference, and (2) This device must accept any interference received, including interference that may cause undesired operation of the device.
 This device complies with Part 15 of the FCC Rules. Operation is subject to the following two conditions: (1) This device may not cause interference, and (2) This device must accept any interference received, including interference that may cause undesired operation of the device.
 This device complies with Part 15 of the FCC Rules. Operation is subject to the following two conditions: (1) This device may not cause interference, and (2) This device must accept any interference received, including interference that may cause undesired operation of the device.
 This device complies with Part 15 of the FCC Rules. Operation is subject to the following two conditions: (1) This device may not cause interference, and (2) This device must accept any interference received, including interference that may cause undesired operation of the device.
 This device complies with Part 15 of the FCC Rules. Operation is subject to the following two conditions: (1) This device may not cause interference, and (2) This device must accept any interference received, including interference that may cause undesired operation of the device.
 This device complies with Part 15 of the FCC Rules. Operation is subject to the following two conditions: (1) This device may not cause interference, and (2) This device must accept any interference received, including interference that may cause undesired operation of the device.
 This device complies with Part 15 of the FCC Rules. Operation is subject to the following two conditions: (1) This device may not cause interference, and (2) This device must accept any interference received, including interference that may cause undesired operation of the device.
 This device complies with Part 15 of the FCC Rules. Operation is subject to the following two conditions: (1) This device may not cause interference, and (2) This device must accept any interference received, including interference that may cause undesired operation of the device.
 This device complies with Part 15 of the FCC Rules. Operation is subject to the following two conditions: (1) This device may not cause interference, and (2) This device must accept any interference received, including interference that may cause undesired operation of the device.
 This device complies with Part 15 of the FCC Rules. Operation is subject to the following two conditions: (1) This device may not cause interference, and (2) This device must accept any interference received, including interference that may cause undesired operation of the device.
 This device complies with Part 15 of the FCC Rules. Operation is subject to the following two conditions: (1) This device may not cause interference, and (2) This device must accept any interference received, including interference that may cause undesired operation of the device.
 This device complies with Part 15 of the FCC Rules. Operation is subject to the following two conditions: (1) This device may not cause interference, and (2) This device must accept any interference received, including interference that may cause undesired operation of the device.
 This device complies with Part 15 of the FCC Rules. Operation is subject to the following two conditions: (1) This device may not cause interference, and (2) This device must accept any interference received, including interference that may cause undesired operation of the device.
 This device complies with Part 15 of the FCC Rules. Operation is subject to the following two conditions: (1) This device may not cause interference, and (2) This device must accept any interference received, including interference that may cause undesired operation of the device.
 This device complies with Part 15 of the FCC Rules. Operation is subject to the following two conditions: (1) This device may not cause interference, and (2) This device must accept any interference received, including interference that may cause undesired operation of the device.
 This device complies with Part 15 of the FCC Rules. Operation is subject to the following two conditions: (1) This device may not cause interference, and (2) This device must accept any interference received, including interference that may cause undesired operation of the device.
 This device complies with Part 15 of the FCC Rules. Operation is subject to the following two conditions: (1) This device may not cause interference, and (2) This device must accept any interference received, including interference that may cause undesired operation of the device.
 This device complies with Part 15 of the FCC Rules. Operation is subject to the following two conditions: (1) This device may not cause interference, and (2) This device must accept any interference received, including interference that may cause undesired operation of the device.
 This device complies with Part 15 of the FCC Rules. Operation is subject to the following two conditions: (1) This device may not cause interference, and (2) This device must accept any interference received, including interference that may cause undesired operation of the device.
 This device complies with Part 15 of the FCC Rules. Operation is subject to the following two conditions: (1) This device may not cause interference, and (2) This device must accept any interference received, including interference that may cause undesired operation of the device.
 This device complies with Part 15 of the FCC Rules. Operation is subject to the following two conditions: (1) This device may not cause interference, and (2) This device must accept any interference received, including interference that may cause undesired operation of the device.
 This device complies with Part 15 of the FCC Rules. Operation is subject to the following two conditions: (1) This device may not cause interference, and (2) This device must accept any interference received, including interference that may cause undesired operation of the device.
 This device complies with Part 15 of the FCC Rules. Operation is subject to the following two conditions: (1) This device may not cause interference, and (2) This device must accept any interference received, including interference that may cause undesired operation of the device.
 This device complies with Part 15 of the FCC Rules. Operation is subject to the following two conditions: (1) This device may not cause interference, and (2) This device must accept any interference received, including interference that may cause undesired operation of the device.
 This device complies with Part 15 of the FCC Rules. Operation is subject to the following two conditions: (1) This device may not cause interference, and (2) This device must accept any interference received, including interference that may cause undesired operation of the device.
 This device complies with Part 15 of the FCC Rules. Operation is subject to the following two conditions: (1) This device may not cause interference, and (2) This device must accept any interference received, including interference that may cause undesired operation of the device.
 This device complies with Part 15 of the FCC Rules. Operation is subject to the following two conditions: (1) This device may not cause interference, and (2) This device must accept any interference received, including interference that may cause undesired operation of the device.
 This device complies with Part 15 of the FCC Rules. Operation is subject to the following two conditions: (1) This device may not cause interference, and (2) This device must accept any interference received, including interference that may cause undesired operation of the device.
 This device complies with Part 15 of the FCC Rules. Operation is subject to the following two conditions: (1) This device may not cause interference, and (2) This device must accept any interference received, including interference that may cause undesired operation of the device.
 This device complies with Part 15 of the FCC Rules. Operation is subject to the following two conditions: (1) This device may not cause interference, and (2) This device must accept any interference received, including interference that may cause undesired operation of the device.
 This device complies with Part 15 of the FCC Rules. Operation is subject to the following two conditions: (1) This device may not cause interference, and (2) This device must accept any interference received, including interference that may cause undesired operation of the device.
 This device complies with Part 15 of the FCC Rules. Operation is subject to the following two conditions: (1) This device may not cause interference, and (2) This device must accept any interference received, including interference that may cause undesired operation of the device.
 This device complies with Part 15 of the FCC Rules. Operation is subject to the following two conditions: (1) This device may not cause interference, and (2) This device must accept any interference received, including interference that may cause undesired operation of the device.
 This device complies with Part 15 of the FCC Rules. Operation is subject to the following two conditions: (1) This device may not cause interference, and (2) This device must accept any interference received, including interference that may cause undesired operation of the device.
 This device complies with Part 15 of the FCC Rules. Operation is subject to the following two conditions: (1) This device may not cause interference, and (2) This device must accept any interference received, including interference that may cause undesired operation of the device.
 This device complies with Part 15 of the FCC Rules. Operation is subject to the following two conditions: (1) This device may not cause interference, and (2) This device must accept any interference received, including interference that may cause undesired operation of the device.
 This device complies with Part 15 of the FCC Rules. Operation is subject to the following two conditions: (1) This device may not cause interference, and (2) This device must accept any interference received, including interference that may cause undesired operation of the device.
 This device complies with Part 15 of the FCC Rules. Operation is subject to the following two conditions: (1) This device may not cause interference, and (2) This device must accept any interference received, including interference that may cause undesired operation of the device.
 This device complies with Part 15 of the FCC Rules. Operation is subject to the following two conditions: (1) This device may not cause interference, and (2) This device must accept any interference received, including interference that may cause undesired operation of the device.
 This device complies with Part 15 of the FCC Rules. Operation is subject to the following two conditions: (1) This device may not cause interference, and (2) This device must accept any interference received, including interference that may cause undesired operation of the device.
 This device complies with Part 15 of the FCC Rules. Operation is subject to the following two conditions: (1) This device may not cause interference, and (2) This device must accept any interference received, including interference that may cause undesired operation of the device.
 This device complies with Part 15 of the FCC Rules. Operation is subject to the following two conditions: (1) This device may not cause interference, and (2) This device must accept any interference received, including interference that may cause undesired operation of the device.
 This device complies with Part 15 of the FCC Rules. Operation is subject to the following two conditions: (1) This device may not cause interference, and (2) This device must accept any interference received, including interference that may cause undesired operation of the device.
 This device complies with Part 15 of the FCC Rules. Operation is subject to the following two conditions: (1) This device may not cause interference, and