



wePresent

SharePod

User's Manual

Version: 0.1

Brand Name: Awind INC
Model Name: WHE-100

Table of Contents

1	OVERVIEW	3
2	PACKAGE CONTENTS.....	4
3	PHYSICAL DETAILS.....	4
4	WHAT YOU MIGHT NEED	5
5	WEPRESENT SHAREPOD PAIRING	5
5.1	AUTO PAIRING	5
5.2	MANUAL PAIRING	6
6	WEPRESENT SHAREPOD MIRRORING.....	7
6.1	SHAREPOD MIRRORING	7
6.2	ADVANCED COLLABORATION	8
7	WEB ADMIN	8
7.1	LOGIN ADMIN PAGE	8
7.2	SYSTEM STATUS.....	9
7.3	DEVICE SETUP.....	10
7.4	NETWORK SETUP.....	11
7.5	WiFi SETUP	11
7.6	CHANGE PASSWORDS	12
7.7	RESET TO DEFAULT	13
7.8	FIRMWARE UPGRADE	13
7.9	REBOOT SYSTEM	15
7.10	LOGOUT	15

1 Overview

wePresent SharePod is a unique wireless collaboration solution for HDMI devices and wePresent which connects any HDMI source to wePresent receiver wirelessly and enables the collaboration feature easily for the meeting room and classroom. By connecting the HDMI cable to SharePod, it will mirror the audio/video from supported HDMI device to big screen immediately, no any software installation or complicated configuration required. Furthermore, you can utilize the advance features on wePresent receiver such as the 4-to-1 projection, Annotation, WebSlides and Conference Control for better meeting room/classroom collaboration.

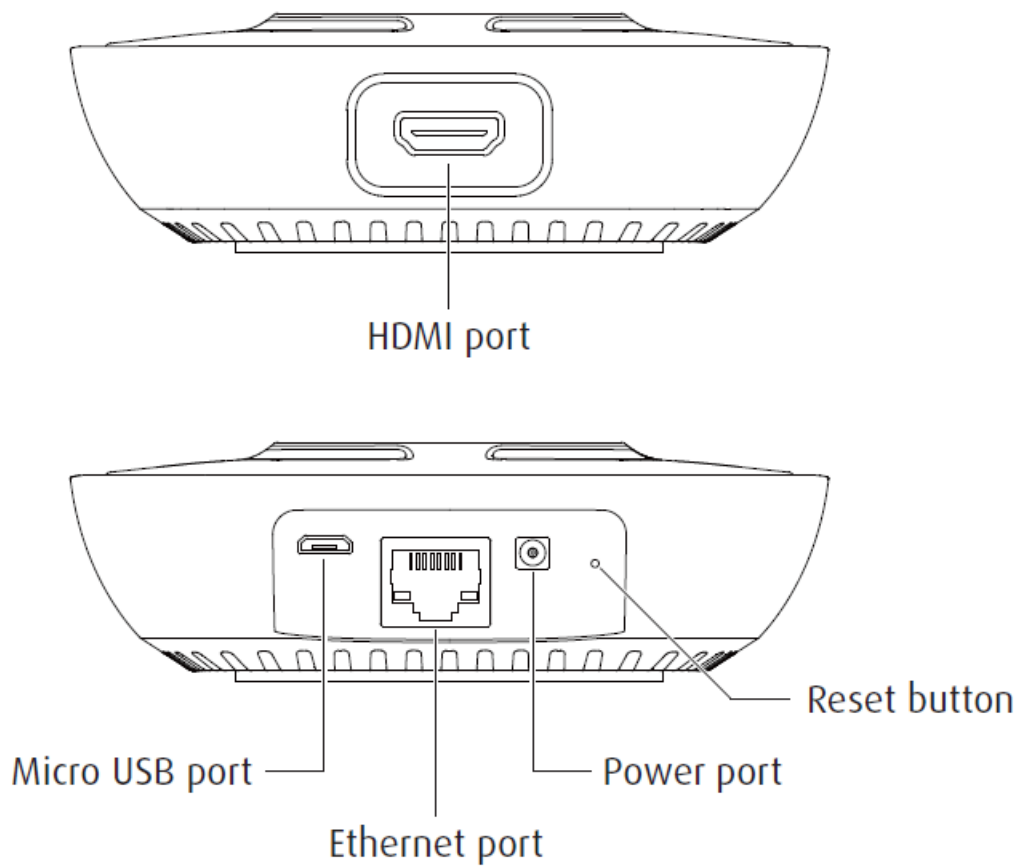
Key Features

- Wireless audio/video mirroring for HDMI video source. (Up to 1080p 30FPS)
- WiFi 802.1a/b/g/n (5G/2.4G WiFi Station Mode)
- Auto Pairing through USB.
- Support wePresent 4-to-1 quadrant projection.
- Support wePresent Conference Control feature.
- Support wePresent WebSlides feature.
- Support wePresent Annotation feature.
- Web Management and Web Firmware Upgrade.

2 Package Contents

- wePresent SharePod device
- Power Adapter (DC +5V, 1.2A)
- Setup Guide
- Warranty Card
- CE DoC

3 Physical Details



	Description
Play/Stop Button	Press button to start/stop mirroring.
HDMI In	HDMI source input.
Micro USB	USB 2.0 port for device pairing.
Ethernet	10/100M RJ-45 port.
Power Jack	Power Jack 5V/1.2A
Reset Button	Press this reset button to execute the hardware reset.

4 What You Might Need

- wePresent receiver device
- Projector/display with VGA/HDMI interface
- HDMI Source device such as Document Camera, Digital Microscope, Laptop, DVD Player.
- Micro USB cable, HDMI Cable

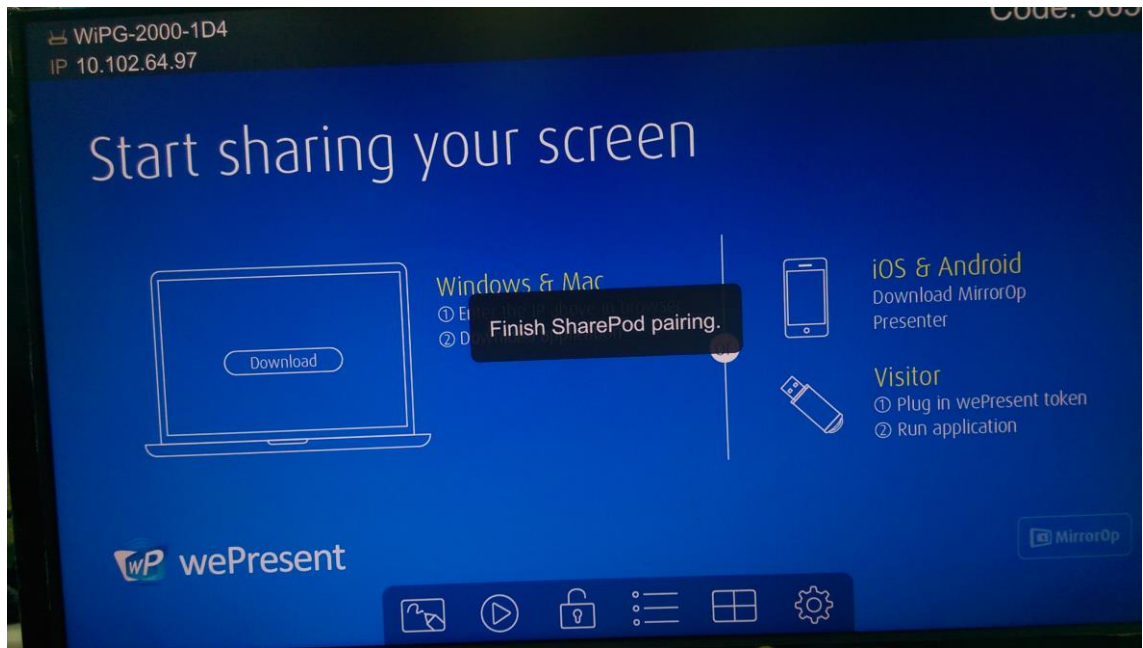
5 wePresent SharePod pairing

5.1 Auto Pairing

Plug in the micro USB cable from SharePod to wePresent receiver, and it will start the pairing automatically. Please wait until you can see the “Pairing successful” message on wePresent receiver screen, and then remove the USB cable to finish the pairing.

Note:

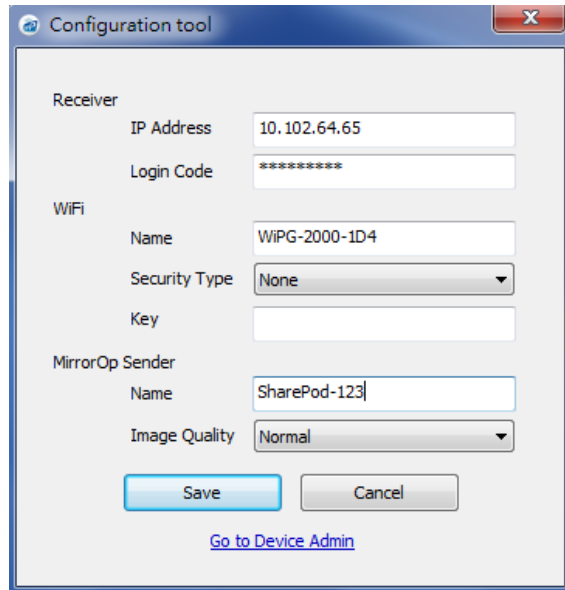
- a. Support wePresent WiPG-1000S, WiPG-1500S, and WiPG-2000S.
- b. Please upgrade the wePresent receiver firmware to the latest version.
- c. It takes around 15 seconds to finish the pairing.



5.2 Manual pairing

1) Plug in the micro USB cable from SharePod to laptop and launch the configuration tool from the CD-ROM disk, then you can configure the pairing information manually as below.

- **Receiver**
 - **IP Address:** the IP address of target wePresent receiver
 - **Login Code:** the login code of target wePresent receiver
- **WiFi**
 - **Name :** the WiFi name of target WiFi Access Point device
 - **Security Type :** WiFi Security type, such as WEP/WPA-PSK/WPA2-PSK
 - **Key :** Security key of target WiFi device
- **MirrorOp Sender**
 - **Sender Name :** The name of SharePod device
 - **Image Quality :** High / Normal
- **<Save>**
- **<Cancel>**
- **<Go to Device Admin>:** Go to SharePod web admin page.



6 wePresent SharePod Mirroring

6.1 SharePod Mirroring

- 1) Power on the SharePod device, it will connect to the target wePresent receiver. The short blinking blue LED indicates the system is trying to connect to target wePresent receiver, and it will switch to long blinking blue LED when it is connected.
- 2) Plug in the HDMI cable to the supported HDMI source device, it will start the mirroring automatically if the wePresent receiver is standby, or you can press the PLAY button to start the mirroring. The blue LED indicates that the system is ready for mirroring and it will switch to red LED when mirroring.

Note:

- a. Please pair the SharePod device with target wePresent receiver before the connection.
- b. Support HDMI 720p, 1080i/1080p.
- c. Not support HDCP.
- d. LED behavior and troubleshooting:

LED	Description	Troubleshooting
Blue	Ready for Mirroring	
Red	Mirroring	

Short Blinking Blue (0.5 sec)	Connecting	Pairing with wePresent receiver again.
Long Blinking Blue (2 sec)	Waiting for HDMI	Check HDMI source.
Short Blinking Red (0.5 sec)	Error (Wrong login code or rejected by Conference Control)	Pair with wePresent receiver again, or disable the Conference Control.
Long Blinking Red (2 sec)	Pairing Mode	

6.2 Advanced Collaboration with wePresent receiver

1) Conference Control:

Choose the SharePod screen from wePresent Web Conference Control page or OSD to start the full screen/4-to-1 projection. The meeting host or teacher can moderate the meeting in an efficient way.

If SharePod is rejected by Conference Control mode while pressing the Play button, the LED will switch to short blinking red LED to notify user.

2) 4-to-1 projection:

Choose the SharePod screen from wePresent Web Conference Control page or OSD to start the 4-to-1 projection.

3) WebSlides:

Broadcast and browse the SharePod screen from WebSlides page, then you can save the screen to local file and make note.

4) Annotation:

Make annotation on SharePod screen from wePresent pen menu (if available) and save the screenshot to local USB driver.

7

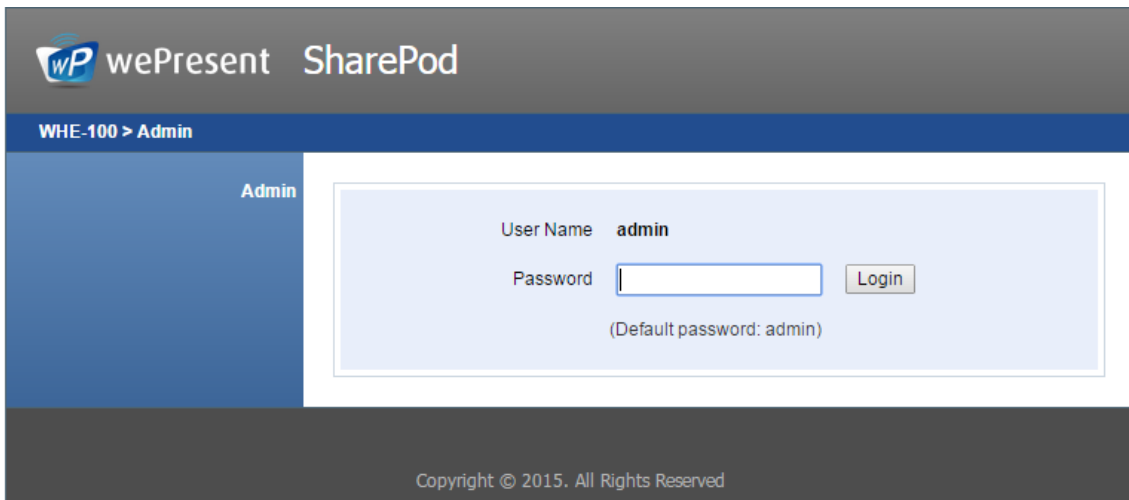
Web Admin

7.1 Login Admin Page

1) Connect the SharePod device to the same network of your laptop, and then open

the browser to visit the SharePod web admin.

- 2) Enter the password to login the admin page. (default password: admin)



wePresent SharePod

WHE-100 > Admin

Admin

User Name admin

Password Login

(Default password: admin)

Copyright © 2015. All Rights Reserved

7.2 System Status

- 1) Click on “System Status” option, it will show current system status.

Model Name: Product model name

Versions:

- **Firmware version no.:** Product firmware version number.

Network Status:

- **IP address :** IP address of SharePod device.
- **Subnet Mask :** subnet mask
- **Default Gateway :** default gateway
- **Wireless MAC address :** wireless MAC address
- **Wire MAC address :** wire MAC address

WiFi Information:

- **WiFi Station Status :** Current status or the connected WiFi AP name.



If there is interference causes WHE-100 to stop the connection to the receiver, it is advised that users to press the button again to resume the connection.

wePresent SharePod

WHE-100 > Admin > System Status Logout »

System Status	Model Name	WHE-100
Device Setup	Versions	
Network Setup	Firmware Version	0.1.0.0
WiFi Setup	Network Status	
Change Passwords	IP Address	10.102.64.160
Reset to Default	Subnet Mask	255.255.255.0
Firmware Upgrade	Default Gateway	10.102.64.1
⏻ Reboot System	Wireless MAC Address	48:A9:D2:59:45:1A
	Wire MAC Address	00:12:5F:00:13:19
	WiFi information	
	WiFi Station Status	Connected (WIPG-2000-1D4)

Copyright © 2015. All Rights Reserved

7.3 Device Setup

- 1) Click on “Device Setup” option, it will show the device setting items,
 - **<Receiver IP Address>**: The IP address of target wePresent receiver
 - **<Login Code>**: The login code of target wePresent receiver.
 - **<Sender Name>**: The name of this SharePod device
 - **<Image Quality>**: Normal / High.

wePresent SharePod

WHE-100 > Admin > Device Setup Logout »

System Status	MirrorOp Setup	Receiver IP Address	<input type="text" value="10.102.64.65"/>
Device Setup		Login Code	<input type="password" value="*****"/>
Network Setup		Sender Name	<input type="text" value="SharePod-319"/>
WiFi Setup		Image Quality	<input type="text" value="Normal"/> ▼
Change Passwords		<input type="button" value="Apply"/> <input type="button" value="Cancel"/>	
Reset to Default			
Firmware Upgrade			
⏻ Reboot System			

Copyright © 2015. All Rights Reserved

7.4 Network Setup

1) Click on “Network Setup” option, it will show the network setting items,

< IP Setup >

- You can select “obtain IP address automatically” or “Use the following IP address” to enter the IP address.

The default setting is as following:

- IP Address: 192.168.100.10.
- Subnet Mask: 255.255.255.0
- Default Gateway: 192.168.100.10
- DNS Server: 192.168.100.10

wePresent SharePod

WHE-100 > Admin > Network Setup Logout

System Status
Device Setup
Network Setup
WiFi Setup
Change Passwords
Reset to Default
Firmware Upgrade
Reboot System

IP Setup

Obtain an IP address automatically Use the following IP address

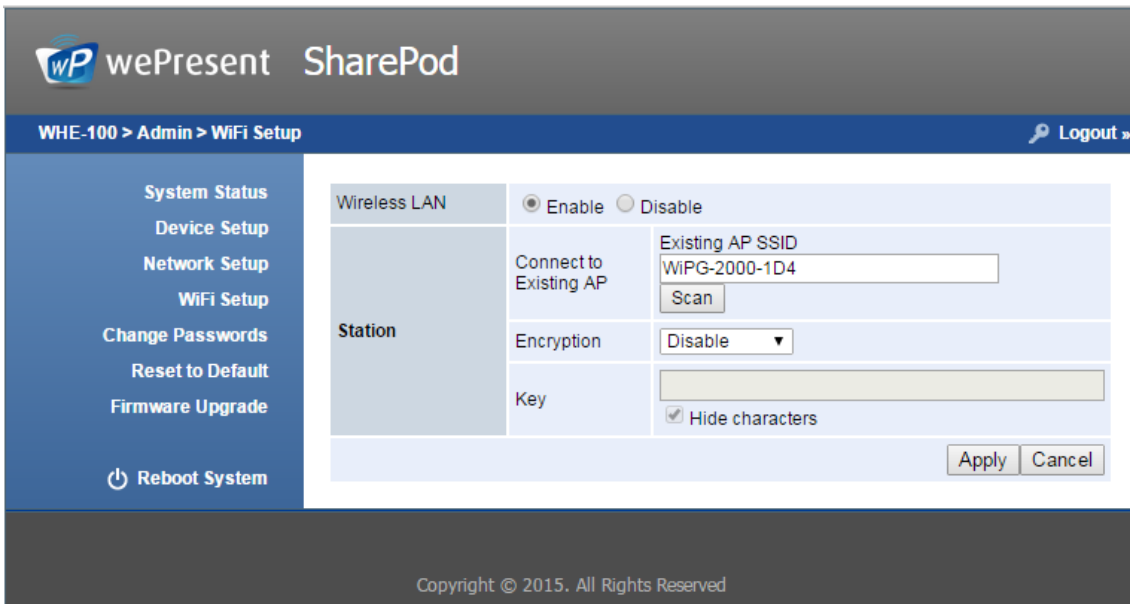
IP Address	192	168	100	11
Subnet Mask	255	255	255	0
Default Gateway	192	168	100	10
DNS Server	192	168	100	10

Apply Cancel

Copyright © 2015. All Rights Reserved

7.5 WiFi Setup

- Wireless LAN: The default setting is “Enable”
- Connect to Existing AP: Press the “Scan” button to scan all available AP devices, and then you can connect to the WiFi AP that you want to connect.
Encryption: Select “Disable” or one of WEP/WPA PSK/WPA2 PSK
Key: If Encryption is enabled, you have to enter a key according to the encryption mode you selected. (If the length of the key entered is not sufficient or too long, a warning message will pop up.)
Note: The Encryption and Key information must be consistent to the existing AP configuration.



Note:

1. The WiFi 5G DFS band is not supported.

7.6 Change Passwords

- 1) Click on “Change Password” option, you can change the password setting for “Admin”.
 - **<Enter New Password>** (Length: up to 8 characters)
 - **<Confirm New Password>**
 - **<Apply>**: Confirm and Save modifications.



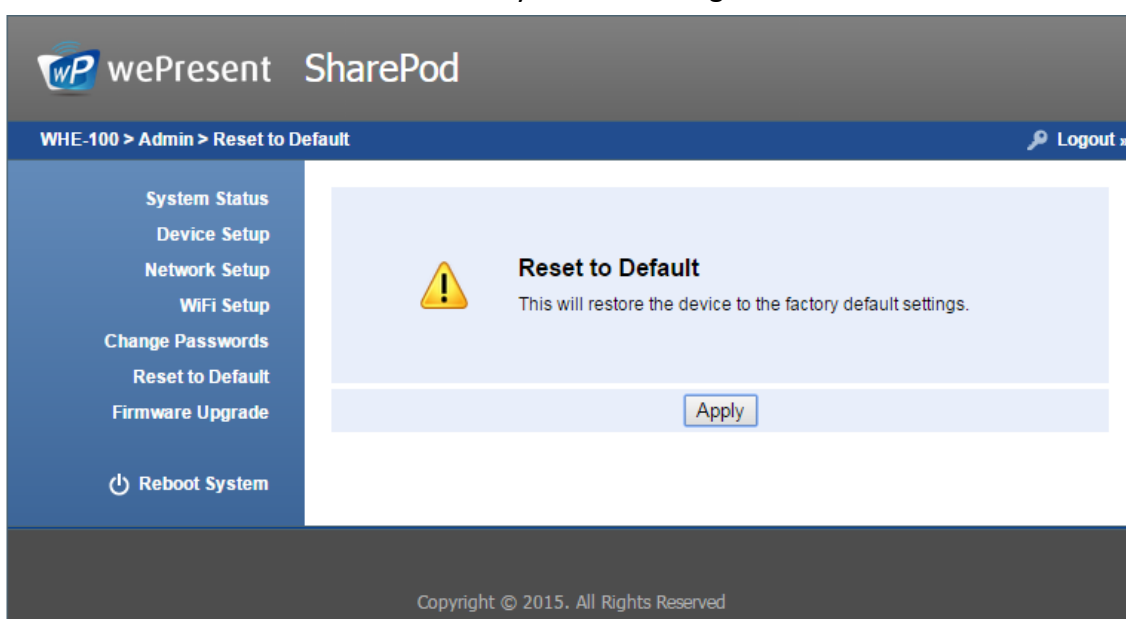
7.7 Reset to Default

1) Click on “Reset to Default” option to restore factory default settings.

<Apply>: Confirm and take action.

***** You can also restore factory default setting from SharePod box reset button. You can find the reset button underneath the box. Please follow below procedures.**

1. Press **[Reset]** button and **Hold**.
2. Turn on wePresent SharePod box.
3. Press more than 10 seconds and relief **[Reset]** button.
4. It will take effect to restore factory default settings.



7.8 Firmware Upgrade

- 1) **<Firmware Version> <Release Date>** You can find the firmware version and release date here.
- 2) **<Check for Update>** you can check the latest firmware on the server.
- 3) Firmware Upgrade
 1. Firstly, you have to get latest firmware image file from your vendor.
 2. Click **<Browse>** to specify file name you want to upgrade.
 3. Click **<Upgrade>** to start.
 4. A warning message shown and count down counter on the screen.
 5. After a few minutes, a complete message shown on the screen.
 6. Restart wePresent SharePod box to take effect.

wePresent SharePod

WHE-100 > Admin > Firmware Upgrade Logout »

- System Status
- Device Setup
- Network Setup
- WiFi Setup
- Change Passwords
- Reset to Default
- Firmware Upgrade
- Reboot System

Firmware Upgrade

Firmware Version	0.1.0.0	<input type="button" value="Check for Updates"/>
Release Date	20150909	

Please stop the projection function first before you apply the Upgrade button!!

File Name 未選擇任何檔案

Copyright © 2015. All Rights Reserved



Please wait while System burns new firmware into your device.

Warning: It needs to take 2-5 minutes to burn the file you transferred into flash memory. **During this period, any interrupt such as shut down or reboot the system will cause system crash!!**

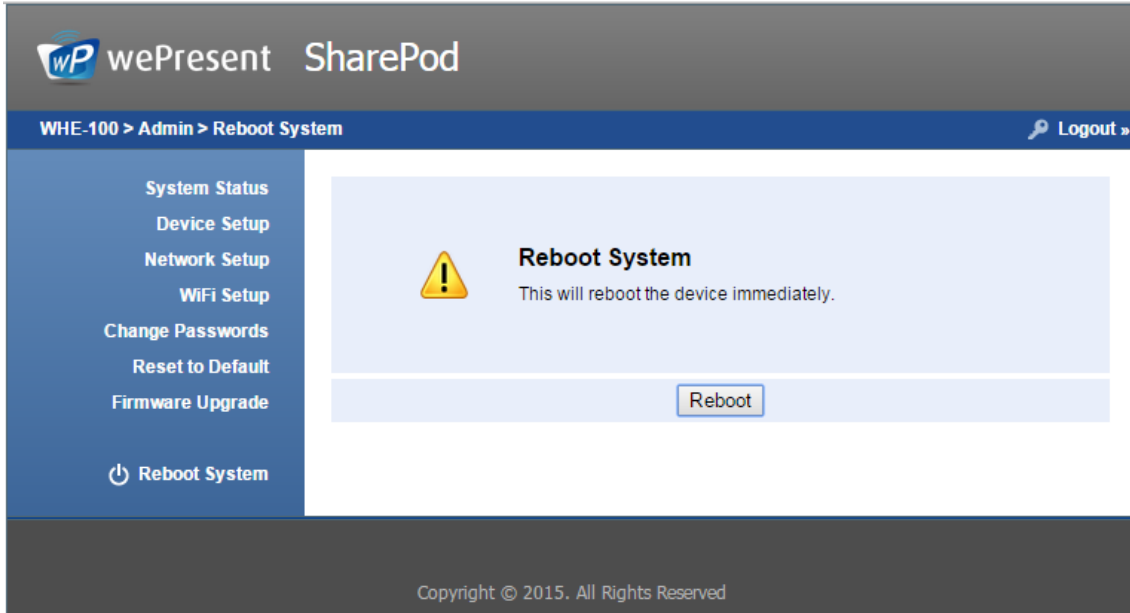
Estimated Time remaining: 4: 30 seconds



Warning: Don't power off wePresent SharePod while firmware upgrade in progress, otherwise you will damage your box and have to return device to your vendor for fixing.

7.9 Reboot System

- 1) Click on “Reboot System” option, you can restart the system
 - ◆ Click on <Reboot >button: reboot system automatically.



7.10 Logout

- 1) Click on “logout” on the up right corner, you can logout the administration webpage and return back to the web management front page.



Federal Communication Commission Interference Statement

This equipment has been tested and found to comply with the limits for a Class B digital device, pursuant to Part 15 of the FCC Rules. These limits are designed to provide reasonable protection against harmful interference in a residential installation. This equipment generates, uses and can radiate radio frequency energy and, if not installed and used in accordance with the instructions, may cause harmful interference to radio communications. However, there is no guarantee that interference will not occur in a particular installation. If this equipment does cause harmful interference to radio or television reception, which can be determined by turning the equipment off and on, the user is encouraged to try to correct the interference by one of the following measures:

- Reorient or relocate the receiving antenna.
- Increase the separation between the equipment and receiver.
- Connect the equipment into an outlet on a circuit different from that to which the receiver is connected.
- Consult the dealer or an experienced radio/TV technician for help.

This device complies with Part 15 of the FCC Rules. Operation is subject to the following two conditions: (1) This device may not cause harmful interference, and (2) this device must accept any interference received, including interference that may cause undesired operation.

This device and its antenna(s) must not be co-located or operating in conjunction with any other antenna or transmitter.

For product available in the USA/Canada market, only channel 1~11 can be operated. Selection of other channels is not possible.

This device is restricted to **indoor** use.

IMPORTANT NOTE:

FCC Radiation Exposure Statement:

This equipment complies with FCC radiation exposure limits set forth for an uncontrolled environment. This equipment should be installed and operated with minimum distance **20cm** between the radiator & your body.