

User Manual - TRANSLATION**Mobile Computer****MC 92N0^{ex} Serie****Type 17-A1A3-..../.....****Type B7-A2A-..../.....****ATEX/IECEX Zone 1****ATEX Zone 2 / 22****UL Class I, II Division 1****UL Class I, II Division 2****UL Class III****ATEX/IECEX Zone 1**

Document No.: 11-A1A2-7D0001 / 357929

Status: 12 November 2013 / Revision 0

Subject to technical changes!

Content	Page
English	1 - 66

1.	Basic security information	3
1.1	Information on this User Manual.....	3
1.1.1	Languages.....	4
1.1.2	Changes in the document.....	4
1.1.3	Handling the product	4
1.2	Intended use.....	4
1.2.1	Exclusive purpose	4
1.2.2	Unintended use	4
1.3	Duties of the operator	5
1.4	Safety information.....	5
1.4.1	General safety information	5
1.5	Maintenance	5
1.5.1	Servicing.....	5
1.5.2	Inspection	5
1.5.3	Repairs	6
1.5.4	Commissioning.....	6
1.6	Protection type, test certificate and standards.....	6
1.7	Warranty.....	6
1.8	Co-applicable documents – Set of documents	8
1.9	Configuration	9
2.	Product description	10
2.1	Definition MC92N0 ^{ex} -IS Version	10
2.2	Definition MC92N0 ^{ex} -NI Version	11
2.3	Operation.....	12
3.	Technical data	13
3.1	Explosion protection IS.....	13
3.2	Explosion protection NI.....	14
3.3	Other applicable standards.....	15
3.4	Features	16
3.4.1	Performance features	16
3.4.2	Physical features	16
3.4.3	User environment	18
3.4.4	Application development	18
3.4.5	Voice and data transmission Wireless LAN.....	19
3.4.6	Voice and data transmission Wireless PAN	20
3.4.7	Headset	20
3.4.8	Data Captur Options.....	20
3.4.9	Decodable barcode types.....	23
3.4.10	RFID Option	24
3.5	Battery	27
3.6	External interfaces.....	28
3.7	Product labelling.....	29
3.8	Laser labels	31
4.	Transport and storage	32
4.1	Transport.....	32
4.2	Storage.....	32
5.	Commissioning	33
5.1	Requirements in potentially explosive atmosphere	34
5.2	First steps.....	35
5.3	Structure.....	35
5.4	Handling accessories	36
5.4.1	Insert battery	37
5.4.2	Change keypad	38
5.4.3	Insert SD card	40
5.4.4	Remove/replace screen protector	41

5.4.5	Holster and cases	42
5.4.6	Headset	43
6.	Operation	44
6.1	Final inspection	44
6.2	Handling	44
6.3	Operation recommendations and requirements	45
6.3.1	Basic safety and health protection requirements	45
6.3.2	Equipment of the laser devices	48
6.3.3	LED Devices	48
6.3.4	Regulatory information for wireless devices	48
6.4	Electromagnetic fields	52
6.4.1	International	52
6.4.2	Handheld devices	53
6.5	Optimise operating times/change energy settings (WEH 6.5.3 only)	54
6.5.1	Automatic shutdown in the case of lengthy standby periods	54
6.5.2	Change display backlight	54
6.5.3	Change keypad background lighting	55
6.5.4	Switch off radio connections	56
6.6	Software versions	56
6.6.1	OEM	56
6.6.2	Storage battery	57
6.6.3	Bluetooth	57
6.6.4	“Fusion”software	58
7.	Faults and troubleshooting	59
7.1	Resetting the MC92N0 ^{ex}	59
7.1.1	Windows Embedded Handheld and Windows CE Devices	59
7.1.2	On a Windows CE 7.0 device	60
7.1.3	Warm boot	60
7.1.4	Cold Boot	60
7.1.5	On a Windows Embedded Handheld 6.5.3 device	61
7.1.6	Warm boot	61
7.1.7	Cold Boot	61
7.1.8	Clean Boot	62
8.	Service, inspection, repair	63
8.1	Service intervals	63
8.2	Inspection	63
8.3	Service and repair work	63
8.3.1	Information on sending in for repairs	63
9.	Disposal	64
10.	Forwarding and packaging information	64
11.	Accessories	65

1. Basic security information

1.1 Information on this User Manual

Read carefully before putting the devices into operation.



The User Manual is a fixed part of the product. It must be kept in the direct vicinity of the device and the installation, operating and service staff must have access to it at all times.

The User Manual contains important information, safety instructions and test certificates which are necessary for the perfect function of the device in operation.

The User Manual is directed at all individuals concerned with the assembly, installation, commissioning and servicing of the product. The applicable guidelines and standards for areas with gas and dust atmosphere (99/92/EC, EN 60079-17, EN 60079-19, IEC 60079-17, IEC 60079-19) must be observed when conducting this work.

Knowledge of the safety and warning information in this User Manual and the strict compliance with it is essential for safe installation and commissioning. Accidents, injuries and material damage can be avoided by circumspect handling and systematically following the instructions.

The figures in this User Manual serve to illustrate the information and descriptions. They are not necessarily completely transferrable and may differ slightly from the actual execution of the device.

Safety and warning information is particularly emphasised in this User Manual and marked by symbols.

DANGER

DANGER describes a directly imminent danger. If not avoided, death or severe injury will be the consequence.

WARNING

WARNING describes a possibly imminent danger. If not avoided, death or severe injury may be the consequence.

CAUTION

CAUTION describes a possibly imminent danger. If not avoided, mild or slight injury may be the consequence.

ATTENTION

ATTENTION describes a possibly damaging situation. If not avoided, the plant or objects in its vicinity may be damaged.



Important information on effective, economic & environmentally compliant handling.

1.1.1 Languages

The original User Manual is written in German. All other available languages are translations of the original User Manual.

The User Manual is available in German and English. If further languages are required, these must be requested from BARTEC or stated on placing an order.

1.1.2 Changes in the document

BARTEC reserves the right to change the content of this document without notification. No warranty is assumed for the correctness of the information. In cases of doubt, the German safety instructions apply because it is not possible to rule out errors of translation or printing. In the case of legal disputes, the "General Terms and Conditions of Business" of the BARTEC Group also apply.

The current versions of the datasheets, operating instructions, certificates and EC declarations of conformity can be downloaded from www.bartec.de under Products and Solutions in the product area "Automation technology" or may be requested directly from BARTEC GmbH.

1.1.3 Handling the product

The product described in this User Manual left the factory in a perfect and tested state in terms of safety. To maintain this state and to achieve a perfect and safe operation of this product, it may only be operated in the manner described by the manufacturer. In addition, the perfect and safe operation of this product requires correct transportation, proper storage and careful operation.

The safe and perfect handling of the Mobile Computer is a prerequisite for its perfect and correct functioning.

1.2 Intended use

1.2.1 Exclusive purpose

The Mobile Computer MC92N0^{ex} is a handheld piece of electrical equipment. It serves the purpose of the mobile recording, processing and radio transmission of data within potentially explosive atmospheres.

It is used exclusively in combination with devices which comply with the requirements placed on the overvoltage category I.

The admissible operating data of the device used must be considered.

1.2.2 Unintended use

Any other use is unintended and may lead to damage and accidents. The manufacturer shall not be liable for any use extending beyond the exclusive purpose.

1.3 Duties of the operator

- The operator undertakes to only permit persons to work with the Mobile Computers who
- ▶ are acquainted with the basic regulations on safety and accident prevention, and who have been inducted in the use of the Mobile Computer;
 - ▶ have read and understood the documentation, the safety chapter and the warnings.

The operator checks that the safety and accident prevention regulations applicable to the respective case of use have been observed.

1.4 Safety information

1.4.1 General safety information

- ▶ Do not dry wipe or clean devices in potentially explosive atmospheres!
- ▶ Do not open devices in potentially explosive atmospheres.
- ▶ General statutory provisions or guidelines on occupational health and safety, accident prevention provisions and environmental protection laws must be heeded, e.g. Operational Safety Ordinance (BetrSichV) and nationally applicable ordinances.
- ▶ Use suitable clothing and shoes with respect to the danger of hazardous electrostatic charges.
- ▶ Avoid heat influences outside the specified temperature range.
- ▶ Protect device from external influences! Do not expose device to caustic/aggressive liquids, vapours or spray. In the case of malfunction or damaged enclosure, remove the device immediately from the potentially explosive atmosphere and bring it to a safe place.

1.5 Maintenance

The pertinent erection and operating provisions for electrical systems must be observed! (e.g. Directive 99/92/EC, Directive 94/9/EC, BetrSichV and nationally applicable ordinances EN 60079-14 and the series DIN VDE 0100)!

Observe the national waste disposal regulations when disposing of the devices.

1.5.1 Servicing

No constant servicing will be necessary if operated correctly under consideration of the assembly instructions and environmental conditions. See Chapter "Service, inspection, repair" in this respect.

1.5.2 Inspection

According to EN 60079-19 and EN 60079-17, the operator of electrical systems in potentially explosive atmospheres is obliged to have these inspected by an electrician to ensure correct condition.

1.5.3 Repairs

Repairs to explosion-protected devices may only be performed by authorised personnel with original spare parts and according to the state of the art. The applicable provisions must be observed in this respect.

1.5.4 Commissioning

It must be checked that all components and documents are available before commissioning.

1.6 Protection type, test certificate and standards

Labels on explosion protection and the test certificate are attached to the device. See Chapter 3 “Technical data” with respect to labelling.

The guidelines and standards applicable to the Mobile Computer for devices and protected systems for intended use in potentially explosive atmospheres are provided in Chapter 3 “Technical data”.

1.7 Warranty

WARNING

No changes or retrofits may be made without the written consent of the manufacturer.

If non-specified components are used, the explosion protection will no longer be guaranteed. In the case of externally procured parts, it is not guaranteed that these have been designed and manufactured in accordance with their load and requisite safety.

- ▶ Contact the manufacturer before any changes or retrofits to receive a release.
Only use original spare and wearing parts.



The manufacturer shall exclusively assume the complete warranty only for spare parts ordered from him.

Our “General Terms and Conditions of Sale and Delivery” shall apply in principle. These shall be made available to the operator on signing of contract at the latest. Warranty and liability claims in the case of injury and damage to property shall be excluded if they are attributable to one or several of the following causes:

Unintended use of the Mobile Computers.

- Incorrect assembly, commissioning, operation and servicing.
- Failure to observe the information in the User Manual with respect to transport, storage, assembly, installation, commissioning, operation and service.
- Independent structural changes.
- Faulty monitoring of parts subject to wear and tear.
- Incorrectly performed repairs.
- Cases of disaster through the impact of foreign bodies and force majeure.

We grant a warranty period of one year starting from the date of delivery from the Bad Mergentheim factory on the Mobile Computers and their accessories (exception: battery 6 months). This warranty covers all parts of the delivery and shall be restricted to the free replacement or repair of the defective parts in our Bad Mergentheim factory. For this purpose, any packaging supplied must be kept where possible. In the case of warranty, the goods must be returned to us after written agreement. There shall be no claim to repair at the sight of erection.

The versions, components, monitors and windows shown in this User Manual are merely examples and may deviate from the actual display.

The information contained herein refers to the explosion-protected version of series MC92N0^{ex}.

This User Manual contains all important information on the subject of explosion protection. The original user manuals and product information of MOTOROLA with information on handling and commissioning are also available. In the case of overlaps, the information in this User Manual shall take priority and shall supersede the information from MOTOROLA.

1.8 Co-applicable documents – Set of documents

BARTEC

- User Manual to the Mobile Computer series MC92N0^{ex} – The use of the explosion-protected version of the Mobile Computer series MC92N0^{ex} is described in this User Manual.
- Technical datasheet for the explosion-protected version of the Mobile Computer series MC92N0^{ex} – This technical datasheet contains the most important explosion-relevant technical data as well as general technical data.

MOTOROLA

The set of documentation of the MC9200 contains information on the respective user requirements and covers the following:

- Quick Start Guide for the MC9200 – The commissioning of the Mobile Computer MC9200 is described in this User Manual.
- User Manual for the MC92N0 – The use of the Mobile Computer MC MC9200 is described in this User Manual.
- Integration Manual for the MC9200 – The setting up of the Mobile Computer MC9200 including accessories is described in this User Manual.

1.9 Configuration

This Manual refers to the following configurations:

Configuration	Ausführung
Wireless	<ul style="list-style-type: none"> ■ WLAN: 802.11 a/b/g/n ■ WPAN: Bluetooth 2.1 EDR
Optional RFID options	<ul style="list-style-type: none"> ■ LF 125 KHz / 134 KHz ■ HF 13,56 MHz ■ UHF (EU) 865,6 bis 867,5 MHz ■ UHF (US) 902 bis 928 MHz
Display	<ul style="list-style-type: none"> ■ 3,7" VGA Color Display
Memory	<ul style="list-style-type: none"> ■ 1 GB RAM / 2 GB Flash Memory
Scanner options	<ul style="list-style-type: none"> ■ 1D- Laser Scanner Normal Range ■ 1D- Laser Scanner Long Range ■ 1D- / 2D- Imager ■ 1D- / 2D-Long Range Imager ■ 1D- / 2D- Imager DPM (Direct Part Marking)
Operating system options	<ul style="list-style-type: none"> ■ Windows WEH 6.5.3 ■ Windows CE 7.0
Keypad options	<ul style="list-style-type: none"> ■ 28 Keypad (Numeric keys can be used direct, Alpha keys and other key functions can be used via function keys) ■ 43 Keypad (Numeric- and Function keys can be used direct, Alpha keys and other key functions can be used via function keys) ■ 53 Keypad (Numeric- and Alpha keys cen be used direct, other key functions can be used via function keys) ■ 53 Keypad with layout for VT Emulation ■ 53 Keypad with layout for 3270 Emulation ■ 53 Keypad with layout for 5250 Emulation



The Emulation software is not part of the device.

Other specific information on the keypad is provided under Technical Data or in the MOTOROLA documentation.

2. Product description

2.1 Definition MC92N0^{ex}-IS Version



The MC92N0^{ex}-IS Mobile Computer is a robust mobile computer designed for industrial use and has been specially modified by BARTEC for use in hazardous (potentially explosive) areas in

- ATEX und IECEx Zone 1
- UL Class I, II Division 1
- UL Class III

This means that the extensive communication and data acquisition options which are already standard in other areas are available to the user in hazardous areas also.

Its ergonomic design and easy operation make it an ideal support in the attainment of fast data availability in enterprise processes. Various versions of keypad are available for manual data capture.

Other data capture options are provided by the integrated 1D or 1D/2D scan engine for capturing barcodes and various optional RFID readers.

The ergonomically mounted scan triggers on the MC92N0^{ex}-IS allow data to be captured easily in one-hand operation. Several technologies are available for data communication with other systems and company divisions.

- Wireless LAN (WLAN),
- Wireless PAN (WPAN) (Bluetooth)
- Ethernet or USB connection through docking station

These modules, which are integrated in the device, allow a seamless transmission of voice and data into the company's network.

Other advantages in use are its sturdy construction, easy-to-read 3.7" VGA colour display with touch technology and highly efficient lithium-ion battery.

A 1 GHz dual-core processor in the MC92N0^{ex}-IS ensures fast process execution. Easy application development is facilitated by the two operating systems, Microsoft Windows WEH 6.5.3 or CE 7.0, in conjunction with the Enterprise Mobility Developer Kits (EMDK) or RohMobile Suite from Motorola.

1 GB RAM and 2 GB flash memory are integrated in the device for storing user-defined applications and data. For larger applications and volumes of data, BARTEC offers SD memory cards.



2.2 Definition MC92N0^{ex}-NI Version



The MC92N0^{ex}-NI Mobile Computer is a robust mobile computer designed for industrial use and has been specially modified by BARTEC for use in hazardous (potentially explosive) areas in

- ATEX Zone 2 / 22
- UL Class I, II Division 2
- UL Class III

This means that the extensive communication and data acquisition options which are already standard in other areas are available to the user in hazardous areas also.

Its ergonomic design and easy operation make it an ideal support in the attainment of fast data availability in enterprise processes. Various versions of keypad are available for manual data capture.

Other data capture options are provided by the integrated 1D or 1D/2D scan engine for capturing barcodes and various optional RFID readers.

The ergonomically mounted scan triggers on the MC92N0^{ex}-NI allow data to be captured easily in one-hand operation. Several technologies are available for data communication with other systems and company divisions.

- Wireless LAN (WLAN),
- Wireless PAN (WPAN) (Bluetooth)
- Ethernet or USB connection through docking station

These modules, which are integrated in the device, allow a seamless transmission of voice and data into the company's network.

Other advantages in use are its sturdy construction, easy-to-read 3.7" VGA colour display with touch technology and highly efficient lithium-ion battery.

A 1 GHz dual-core processor in the MC92N0^{ex}-NI ensures fast process execution. Easy application development is facilitated by the two operating systems, Microsoft Windows WEH 6.5.3 or CE 7.0, in conjunction with the Enterprise Mobility Developer Kits (EMDK) or RohMobile Suite from Motorola.

1 GB RAM and 2 GB flash memory are integrated in the device for storing user-defined applications and data. For larger applications and volumes of data, BARTEC offers SD memory cards.



2.3 Operation

The Mobile Computer MC92N0^{ex} is a handheld electrical device. It serves the purposes of the mobile entry, processing and radio transmission of data within potentially explosive atmospheres.

It is used exclusively in combination with devices which comply with the requirements placed on the overvoltage category I.

The Mobile Computer MC92N0^{ex}-IS, Type 17-A1A.-..../..... have been modified for use in the following potentially explosive atmospheres

- ATEX/IECEX Zone 1
- UL Class I Division 1 Groups C and D
- UL Class II Division 1 Groups F and G
- UL Class III
- ATEX/IECEX Zone 2
- UL Class I Division 2 Groups A, B, C and D
- UL Class II Division 2 Groups F and G

The Mobile Computer MC92N0^{ex}-IS, Type 17-A1A.-..../..... may not be used in the following zones:

- ATEX/IECEX Zone 0
- ATEX/IECEX Zone 21 / 22
- UL Class I Division 1 Groups A and B
- UL Class II Division 1 Groups E
- UL Class II Division 2 Groups E

The Mobile Computer MC92N0^{ex}-NI, Type B7-A2A.-..../..... have been modified for use in the following potentially explosive atmospheres




- ATEX Zone 2
- ATEX Zone 22
- UL Class I Division 2 Groups A, B, C and D
- UL Class II Division 2 Groups F and G
- UL Class III

The Mobile Computer MC92N0^{ex}-NI, Type B7-A2A.-..../..... may not be used in the following zones:





- ATEX/IECEX Zone 0 and 1
- ATEX/IECEX Zone 21
- UL Class I Division 1 Groups A, B, C and D
- UL Class II Division 1 Groups E, F and G
- UL Class II Division 2 Groups E

3. Technical data

3.1 Explosion protection IS

ATEX Zone 1		
Type	17-A1A3-0.../S..... 17-A1A3-R.../S.....	MC92N0 ^{ex} -IS MC92N0 ^{ex} -IS RFID
Ex protection		 II 2G Ex q [ib] IIC T4 Gb
Type	17-A1A3-R..7/S..... 17-A1A3-R..8/S.....	MC92N0 ^{ex} -IS RFID
Ex protection		 II 2G Ex q [ib] IIB T4 Gb
Certificate		PTB 13 ATEX 2019 X
Standards		EN 60079-0:2012 EN 60079-5:2007 EN 60079-11:2012
IECEx Zone 1		
Type	17-A1A3-0.../S..... 17-A1A3-R.../S.....	MC92N0 ^{ex} -IS MC92N0 ^{ex} -IS RFID
Ex protection		Ex q [ib] IIC T4 Gb
Type	17-A1A3-R..7/S..... 17-A1A3-R..8/S.....	MC92N0 ^{ex} -IS RFID
Ex protection		Ex q [ib] IIB T4 Gb
Certificate		IECEx PTB 13.0043X
Standards		IEC 60079-0:2011 Edition 6 IEC 60079-5:2007 Edition 3 IEC 60079-11:2011 Edition 6
ATEX and IECEx Directives		ATEX 94/9/EC EMV 2004/108/EC R&TTE 1999/5/EC
Product labelling		 0044
UL Class I Division 1 and UL Class I, II, III Division 1		
Type	17-A1A1-0.../S..... 17-A1A1-R.../S.....	MC92N0 ^{ex} -IS MC92N0 ^{ex} -IS RFID
Ex protection		Class I Division 1 Groups C and D
Type	17-A1A2-0.../S..... 17-A1A2-R.../S.....	MC92N0 ^{ex} -IS .MC92N0 ^{ex} -IS RFID
Ex protection		Class I Division 1 Groups C and D Class II Division 1 Groups F and G Class III
Certificate USA and Canada		E226123
Standards		USA Standard UL 913, 5 Edition. Canada National Standard C22.2 Nr. 157-92

3.2 Explosion protection NI

ATEX Zone 2/22		
Type	B7-A2A3-0.../S..... B7-A2A4-0.../S..... B7-A2A3-R.../S..... B7-A2A4-R.../S.....	MC92N0 ^{ex} -NI MC92N0 ^{ex} -NI RFID
Ex protection		 II 3G Ex nA IIC T6 Gc  II 3D Ex tc IIIC T80 °C Dc -20 °C ≤ Ta ≤ +50 °C
Certificate		B1-A2A3-7C0001
Type	B7-A2A3-R..7/S..... B7-A2A4-R..7/S..... B7-A2A3-R..8/S..... B7-A2A4-R..8/S.....	MC92N0 ^{ex} -NI RFID
Ex protection		 II 3G Ex nA IIB T6 Gc  II 3D Ex tc IIIB T80 °C Dc -20 °C ≤ Ta ≤ +50 °C
Certificate		B1-A2A3-7C0002
Standards		EN 60079-0:2009 EN 60079-15:2010 EN 60079-31:2009
UL Class I Division 2 and UL Class I, II, III Division 2		
Type	B7-A2A1-0.../S..... B7-A2A1-R.../S.....	MC92N0 ^{ex} -NI MC92N0 ^{ex} -NI RFID
Ex protection		Class I Division 2 Groups A, B, C and D
Type	B7-A2A2-0.../S..... B7-A2A4-0.../S..... B7-A2A2-R.../S..... B7-A2A4-R.../S.....	MC92N0 ^{ex} -NI MC92N0 ^{ex} -NI RFID
Ex protection		Class I Division 2 Groups A, B, C and D Class II Division 2 Groups F and G Class III
Certificate USA and Canada		E321557
Standards		ANSI/ISA 12.12.01, UL 60950, Canada National Standard C22.2 No. 60950-1-07 2nd edition

3.3 Other applicable standards

Electrical safety	
EN 60950-1 / IEC 60950-1	Setting up of IT safety - Part 1. General requirements
UL 60950-1	
CSA C22.2 No. 60950-1	
WLAN / Bluetooth	
EN 300 328	Wideband 2.4 GHz Systems
EN 301 893	Broadband Radio Access (5GHz)
FCC Part 15.247	
FCC Part 15.407	
Canada: RSS-210	
RF Exposure (SAR)	
EN 62311	Assessment of electronic and electrical equipment related to human exposure restrictions for electromagnetic fields (0 Hz - 300 GHz)
EN 50371	Generic standard to demonstrate the compliance of low-power electronic and electrical apparatus with the basic restrictions related to human exposure to electromagnetic fields (10 MHz to 300 GHz)
FCC Part 2	
FCC OET Bulletin 65 Supplement C	
Canada: RSS-102	
EMI/RFI	
EN 301 489-1	EMC Tests on Radio and Telecommunications Terminal Equipment Part 1: Common EMC Requirements
EN 301 489-17	EMC Tests on Radio Equipment and Telecommunications Terminal Equipment Part 17: Bluetooth®, WLAN
EN 55022 Class B	Information Technology Equipment – Radio Disturbance Characteristics - Limits and Methods of Measurement
EN 55024	Information Technology Equipment – Immunity Characteristics - Limits and Methods of Measurement
FCC Part 15	
Canada: RSS-210	
Canada: ICES 003 Class B	
Laser Safety	
IEC Class2 / FDA Class II in Übereinstimmung mit IEC 60825-1 / EN 60825-1	Laser Safety

LED Safety	
IEC / EN 60825-1	Safety of Laser Products - Part 1: Equipment Classification and Requirements
IEC / EN 62471	Photobiological Safety of Lamps and Lamp Systems


3.4 Features

3.4.1 Performance features

CPU	Dual-Core 1 GHz OMAP 4430-Prozessor
Operating system	Windows Embedded Handheld WEH 6.5.3 or Windows CE 7.0
Memory	1 GB RAM; 2 GB Flash
Extension slot	SD card slot with SDHC support (up to 32 GB)
	Optionally extendable with SD card: 1 GB Order number 17-28BE-F006/0002 2 GB Order number 17-28BE-F006/0003 4 GB Order number 17-28BE-F006/0004 8 GB Order number 17-28BE-F006/0005 16 GB Order number 17-28BE-F006/0006 32 GB Order number 17-28BE-F006/0007
Interfaces	RS232 USB

3.4.2 Physical features

Dimensions	in mm/inch	Height x width x depth	
	Gun:	231 x 91 x 193 mm	9.1 x 3.6 x 7.6 inch
	Gun RFID:	231 x 115 x 193 mm	9.1 x 4.5 x 7.6 inch
Dimensions	in mm/inch	Height x width x depth	
	Brick:	231 x 91 x 59 mm	9.1 x 3.6 x 2.3 inch
	Brick RFID:	231 x 115 x 105 mm	9.1 x 4.5 x 4.1 inch
Weight ATEX/IECEX (including battery)	Gun :	approx. 1060 g	approx. 37 oz
	Brick:	approx. 980 g	approx. 34 oz
	Gun RFID:	approx. 1400 g	approx. 49 oz
	Brick RFID:	approx. 1320 g	approx. 46 oz
Weight UL Division 1 (including battery)	Gun :	approx. 830 g	approx. 29 oz
	Brick:	approx. 700 g	approx. 24 oz
	Gun RFID:	approx. 1170 g	approx. 41 oz
	Brick RFID:	approx. 1040 g	approx. 40 oz
Weight UL Division 2 and ATEX Zone 2/22 (including battery)	Depends on version and configuration		
	Gun :	approx. 810 g	approx. 26 oz
	Brick:	approx. 680 g	approx. 22 oz
	Gun RFID:	approx. 850 g	approx. 30 oz

Brick RFID:	approx. 720 g	approx. 26 oz
Display	3,7"-VGA- colour display VGA mode: 480 (width) x 640 pixel (height) QVGA mode: 240 (width) x 320 pixel (height) (Windows CE only)	
Touchscreen	Analogue-resistive glass touchscreen	
Background lighting	LED technology	
Network connections	Ethernet (via charge station); Full-Speed USB, Host or Client	
Interactive sensor technology	Three-axes accelerometer for motion sensor application for dynamic screen orientation, power monitoring and recognition of free fall	
Keypad versions	<ul style="list-style-type: none"> ■ 28 Keypad (Numeric keys can be used direct, Alpha keys and other key functions can be used via function keys) ■ 43 Keypad (Numeric- and Function keys can be used direct, Alpha keys and other key functions can be used via function keys) ■ 53 Keypad (Numeric- and Alpha keys can be used direct, other key functions can be used via function keys) ■ 53 Keypad with layout for VT Emulation ■ 53 Keypad with layout for 3270 Emulation ■ 53 Keypad with layout for 5250 Emulation 	
		
28 Tasten only IS version	43 Tasten only IS version	53 Tasten only IS version



No emulation software is installed on the Mobile Computers with the emulation key version. The customer must order the emulation software separately from Motorola Solutions and its distributors and install it himself.

The devices are modified to suit the selected keypad version. The end user can replace the keypad later himself.

When replacing the keyboard, follow the instructions in this manual.

3.4.3 User environment

Operating temperature Only IS Version type 17-A1A.-...	-20 °C to +40 °C	-4 °F to +104 °F
Operating temperature Only NI Version type B7-A2A.-...	-20 °C to +50 °C	-4 °F to +122 °F
Operating temperature during charging	0 °C to +40 °C	+32 °F to +104 °F
Storage temperature (without battery)	-40 °C to +70 °C	-40 °F to +158 °F
Air humidity	5 % to 95 % (non-condensing)	
Class of protection (EN 60529) Only IS Version type 17-A1A3- ... (ATEX/IECEX Zone 1)	IP 54	
Class of protection (EN 60529) Only IS Version type 17-A1A2- ... (UL Division 1) Only NI Version type B7-A2A.-... (UL Division 2)	IP 64	

3.4.4 Application development

PSDK (Platform Software Development Kit) and EMDK (Enterprise Mobility Developer Kit) is available via the MOTOROLA Solutions Website.	
Available for	<ul style="list-style-type: none"> – C – Java – .Net
Browser support:	
Pocket Browser or “RhoMobile Suite” from MOTOROLA Solutions for application development.	
RhoMobile Suite Toolkit consists of:	<p>Technology-independent applications are prepared using this toolkit. Device type, operating system and screen size no longer play a role.</p> <p>RhoMobile applications run simply on all popular mobile devices used in your company.</p>

<ul style="list-style-type: none"> – RhoStudio – Rhodes. – RhoElements – RhoConnect – RhoHub – RhoGallery 	<p>One tool simplicity for application development, debugging and testing.</p> <p>Open source cross-platform development framework for consumer applications</p> <p>Cross-platform development framework for enterprise applications.</p> <p>A mobile application and integration server for easy backend system integration and synchronization.</p> <p>Hosted services that simplify mobile application development and deployment.</p> <p>An enterprise app store to deploy, manage and secure mobile apps.</p>
<p>Further applications are available from MOTOROLA Solutions, e.g.</p>	<p>Rem Capture</p> <ul style="list-style-type: none"> – for the processing of registration files. <p>Application Launcher</p> <ul style="list-style-type: none"> – for the classification of applications in categories and access regulation for individual applications or operating system. <p>Data Wedge</p> <ul style="list-style-type: none"> – Barcodes in applications can be read such as Excel or Word using. <p>AppCenter</p> <ul style="list-style-type: none"> – to define access regulations for the applications.
<p>RFID</p>	<p>SDK is available for C#</p> <p>Includes all necessary drivers and DLL files for implementation.</p> <p>A RFID demo available in open source to show how to implement the RFID reader in an application.</p>

3.4.5 Voice and data transmission Wireless LAN

WLAN radio module	
Radio standard	Tri Mode IEEE 802.11a/b/g/n
Data rate	IEEE802.11a: up to 54 Mbit/sec. IEEE802.11b: up to 11 Mbit/sec. IEEE802.11g: up to 54 Mbit/sec. IEEE802.11n: up to 65 Mbit/sec.
Frequency range (country-dependent)	IEEE802.11a: 5 GHz IEEE802.11b: 2.4 GHz IEEE802.11g: 2.4 GHz IEEE802.11n: 2.4 GHz and 5 GHz
Operating channels IEEE802.11a IEEE802.11b/g	Channel 8 - 165 5040 MHz - 5825 MHz Channel 1 - 13 2412 MHz - 2472 MHz Channel 14 2484 MHz Japan only The actual operating channels and frequencies are subject to the applicable rules and the certification authorities
Safety	WPA2 Enterprise, 802.1x; EAP-TLS; TTLS (CHAP, MS-CHAP, MS-CHAPv2, PAP oder MD5); PEAP

	(TLS, MSCHAPv2, EAP-GTC); LEAP, EAP-FAST (TLS, MS-CHAPv2, EAP-GTC), WPA2/AES, CCX v4, FIPS 140-2 konform and IPv6
Spread procedure	DSSS (Direct Sequence Spread Spectrum) and Orthogonal Frequency Division Multiplexing
Language support	Voice over IP
Antenna	internal

3.4.6 Voice and data transmission Wireless PAN

Bluetooth	Class II, Version 2.1 with EDR
Maximum Output Power	2.5 mW
Maximum data rate	Up to 2.1 Mbit/s
Maximum range	10 m 32.8 feet
Antenna	Internal chip aerial

3.4.7 Headset

Headset Connector	
Ex protection	Ex ib IIC
U ₀	8,6V
I ₀	354mA
P ₀	479mW
C ₀	930nF
L ₀	460μH

3.4.8 Data Captur Options

Four available configuration possibilities	<ul style="list-style-type: none"> ■ 1D- Standard-Range Laser Scanner (SE965) ■ 1D- Long-Range Laser Scanner (Lorax SE1524) ■ 1D- / 2D- Imager (Blockbuster SE4500-SR) ■ 1D- / 2D- Imager DPM (Direct Part Marking) (Blockbuster SE4500-HD) ■ 1D- / 2D- Long Range Imager (SE4600-LR)
--	--



The various scan engines' maximum ranges depend on the bar code symbology/type and the module width (in mils) used.

3.4.8.1 1D- Standard-Range Laser Scanner (SE965)

SE965 1D scan engine decodes/reads 1D symbols.



Further detailed information on the SE965 can be found in the "User Manual" or "Integrator Guide" from Motorola Solutions.

Available for the MC92N0^{ex} Brick versions.

Laser class	CDRH Class II / IEC Class 2
Decode range with Code 39, 55 mils	bis zu 2,5 m bis zu ca. 100 Inch



The decode range depends on the quality and size of the bar code and on the scan engine's software setting.

Optical resolution	0.005 inch - minimum element width
--------------------	------------------------------------

Skew	± 40° from the vertical
Pitch	± 65° from the starting position
Roll	± 50° from the vertical
Ambient light immunity	86,111 lux
Scan rate	104 (± 12) scans/sec. (bi-directional)
Scan angle	47° ± 3° far range 35° ± 3° medium distance 10° ± 3° near range
Laser energy at 650 nm	1.7 mW peak

3.4.8.2 1D- Long-Range Laser Scanner (Lorax SE1524)

Lorax SE1524 1D scan engine decodes/reads 1D symbols



Other detailed information on the Lorax SE1524 can be found in the Motorola Solutions "User Manual" or "Integrator Guide".

Available for the MC92N0^{ex} Gun version.

Laser class	CDRH Class II / IEC Class 2
Decode range	Up to 13.7 m up to 45 ft.



The decode range depends on the quality and size of the bar code and on the scan engine's software setting.

Ambient light immunity	86,111 lux
Scan rate	35 (± 5) scans/sec. (bi-directional)
Scan angle	13.5° ± 0.7°
Laser energy at 650 nm	1.0 mW nominal value

3.4.8.3 1D-/2D- Imager (Blockbuster SE4500-SR)

SE4500-SR 1D/2D Imager Engine (omni-directional) decodes/reads 1D and 2D symbols



Further detailed information on the SE 4500-SR Blockbuster can be found in the "User Manual" or "Integrator Guide" from Motorola Solutions.

Available for the MC92N0^{ex} Gun and Brick versions.

Laser class	CDRH Class II / IEC Class 2
Decode range, near with code 39, 5 mils	up to approx. 5.3 cm up to approx. 2.1 inches
Decode range, far with code 39, 5 mils	up to approx. 19.1 cm up to approx. 7.5 inches



The decode range depends on the quality and size of the bar code and on the software setting in the scan engine.

Focus distance	From the centre of the scanner window SR --- 19 cm
Resolution	752 x 480 pixels HxV (grey phase)
Rotational tolerance	360°
Angle of inclination	± 60° from the starting position
Skew tolerance	± 60° from the starting position
Ambient light immunity	96,900 lux

Aiming LED (VLD)	655 Nm ± 10 nm
Exposure element (LED)	625 Nm ± 5 nm LEDs (2x)
Field of view	Horizontal 40 ° Vertical 25 °

3.4.8.4 1D-/2D- Imager DPM (Blockbuster SE4500-HD)

SE4500-HD 1D/2D Imager Engine with DPM decodes/reads a wide range of DPM markings on metal, plastic and glass surfaces, including dot peening, laser etching, casting, stamping or moulding.



Further detailed information on the Blockbuster SE 4500-HD can be found in the "User Manual" or "Integrator Guide" from Motorola Solutions.

Available for the MC92N0^{ex} Gun and Brick versions.

Laser class	CDRH Class II / IEC Class 2	
Decode range, near with code 39, 3 mil	up to approx. 4.1 cm	up to approx. 1.6 inches
Decode range, far with code 39, 3 mil	up to approx. 9.7 cm	up to approx. 3.8 inches



The decode range depends on the quality and size of the bar code and on the scan engine's software setting.

Focus distance	From the centre of the scanner window SR --- 19 cm
Resolution	752 x 480 pixels HxV (grey phase)
Roll tolerance	360°
Pitch angle	± 60° from the starting position
Skew tolerance	± 60° from the starting position
Ambient light immunity	96,900 lux
Aiming LED (VLD)	655 Nm ± 10 nm
Exposure element (LED)	625 Nm ± 5 nm LEDs (2x)
Field of view	Horizontal 40 ° Vertical 25 °

3.4.8.5 1D-/2D- Long Range Imager (SE4600-LR)

SE4600-LR 1D/2D Imager Engine (omni-directional) decodes/reads 1D and 2D symbols



Further detailed information on the SE 4600-LR can be found in the "User Manual" or "Integrator Guide" from Motorola Solutions.

Available for the MC92N0^{ex}-NI Gun and Brick versions.

Only available for NI version type B7-A2A4-...

Laser class	CDRH Class II / IEC Class 2	
Decode range, near with code 39, 5 mils	up to approx. 20,32 cm	up to approx. 8 inches
Decode range, far with code 39, 5 mils	up to approx. 9,14 cm	up to approx. 30 feet



The decode range depends on the quality and size of the bar code and on the software setting in the scan engine.

3.4.9 Decodable barcode types

All supported 1D-Barcodes		All supported 2D-Barcodes (only supported with Imager versions)	
1D-Symbol/Codes		2D-Symbol/Codes	
Code 11	Code 39	Aztec	Micro PDF-417
Code 93	Code 128	Australian 4-state	Maxi Code
Codabar	Coupon code	Canadian 4-state	PDF-417
Chinesisch 2 aus 5	Discrete 2 aus 5	Composite AB	QR Code
Interleaved 2 aus 5	Trioptic 39	Composite C	TLC39
EAN-8	EAN-13	Data Matrix	UK 4-state
UPCA	UPCE	Dutch Kix	US Planet
UPC/EAN Zusätze	MSI	Japanese 4-state	US Postnet
Webcode	RSS-14	PDF-417 Macro	USPS 4-state (US4CB)
RSS Limited	RSS Expanded	(Macro) Mikro PDF-417	microQR

3.4.10 RFID Option

Four different RFID options available	LF (Low Frequency) HF (High Frequency) UHF (EU) (Ultra High Frequency) UHF (US) (Ultra High Frequency)
---------------------------------------	---



The maximum read / write ranges of the different RFID readers are dependent on various environmental and ambient conditions and refer in the following to office environment.

- Tag size
- Mounting surface (mtall, wood or different)
- Environment conditions
- Magnetical influence from outside
- Temperature
- Humidity

	
RFID Option with extended reader	RFID Option with extended reader + mounted antenna

3.4.10.1 LF Reader (Einternal Module)



Available for MC92N0^{ex} Gun and Brick
 Not available for ATEX/IECEX Zone 1
 Combination with Scan Engine is not possible!

Nominal writing distance	approx. 5 cm approx. 1.9 inches
Antenna	Integrated as ferrite antenna or air coil antenna
Frequency range	125/134 kHz
Transmitting power	100 mW ± 2dB

Supported standards		
HITAG S256	HDX - RO	EM 4450/4550
HITAG S 2 kbit	HDX (Multipage)	EM4xxx (UNIQUE)
HITAG 1	EM4xxx (UNIQUE)	FDX-B
HITAG 2	FDX-B	BDE
Q5	BDE	ISO 11784/5
ATA5567	ISO 117845	ISO Animal
EM4305	ISO Animal	

3.4.10.2 LF Reader (Extended Module)



Available for MC92N0^{ex} Gun and Brick

Nominal writing distance	approx. 5 cm approx. 1.9 inches
Antenna	Integrated in the extended module as ferrite antenna or air coil antenna
Frequency range	125/134 kHz
Transmitting power	100 mW ± 2dB

Supported standards		
HITAG S256	HDX - RO	EM 4450/4550
HITAG S 2 kbit	HDX (Multipage)	EM4xxx (UNIQUE)
HITAG 1	EM4xxx (UNIQUE)	FDX-B
HITAG 2	FDX-B	BDE
Q5	BDE	ISO 11784/5
ATA5567	ISO 117845	ISO Animal
EM4305	ISO Animal	

3.4.10.3 HF Reader (Extended Module)



Available for MC92N0^{ex} Gun and Brick

Supported standards	HF ISO 15693 e.g. I-Code SLI, Tag-IT HFI, my-d vicinity, STM LRI512 HF ISO 14443 e.g. mifare, mifare Ultra Light, my-d proximity, I-Code 1 (optional)
Nominal reader calibration width	approx. 7 to 12 cm approx. 2.75 to 4.72 inch approx. 1 to 6 cm approx. 0.4 to 2.36 inch (with tags in cheque card format)
Nominal writing distance	approx. 7 to 12 cm approx. 2.75 to 4.72 inch approx. 1 to 6 cm approx. 0.4 to 2.36 inch (with tags in cheque card format)
Antenna	integrated
Frequency range	13.56 MHz
Transmitting power	250 mW ± 2 dB

3.4.10.4 UHF Reader (Extended Module)



Available for MC92N0^{ex} Gun and Brick

Supported standards	EPC Class 1 Gen 2 tag	
Nominal reading range	approx. 30 to 50 cm	approx. 11.8 to 19.6 inch
Nominal writing distance	approx. 30 to 50 cm	approx. 11.8 to 19.6 inch
Antenna	integrated	
Frequency range		
Europe	865.6 to 867.5 MHz (EN302 208)	
USA	902.0 to 928.0 MHz (FCC CFR 47 part 15.247)	
Transmitting power	200 mW ± 2dB	

3.4.10.5 UHF Reader (Extended Module + Mounted Antenna)



Available for MC92N0^{ex} Gun and Brick

ATEX/IECEx protection type: II 2G Ex q [ib] IIB T4 Gb

Supported standards	EPC Class 1 Gen 2 tag	
Nominal reading range	approx. 150 cm	approx. 59 inches
Nominal writing distance	approx. 150 cm	approx. 59 inches
Antenna	external (UPM Raflatac)	
Frequency range		
Europe	865.5 to 867.5 MHz (EN302 208)	
USA	902.0 to 928.0 MHz (FCC CFR 47 part 15.247)	
Transmitting power	200 mW ± 2dB	

3.5 Battery

Battery	(charge only outside hazardous location) Type 17-A1Z0-0001 for Typ 17-A1A3-... Lithium Ions 7.4 V / 2200 mAh Type 17-A1Z0-0002 for Typ 17-A1A2-... Lithium Ions 7.4 V / 2200 mAh Type B7-A2Z0-0006 für Typ B7-A2A4-... Lithium Ions 7.4 V / 2200 mAh
Operating temperature	
– During charging	0 °C to +40 °C +32 °F to 104 °F
– During discharging	-20 °C to +50 °C -4 °F to 122 °F
Storage temperature	-20 °C to +50 °C -4 °F to 122 °F
Relative air humidity	20 % - 95 % (non-condensing)
Backup battery	Ni-MH battery 2.4 V/15 mAh (rechargeable) Integrated in the device and only replaceable in the factory.
Battery performance	8 hours

The battery life depends on various usage factors and on the device settings such as e.g.

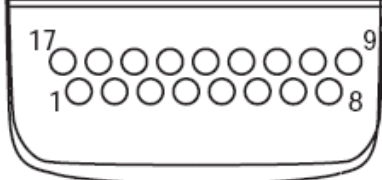


- Use and setting of WLAN / Bluetooth
- Backlighting
- Frequency of scanner utilisation
- Frequency of RFID utilisation
- etc.

3.6 External interfaces

Restrictions:

- The 17-pole data interface should only be used outside the potentially explosive atmosphere and exclusively with the devices stated by the manufacturer!
- The headset connection should only be used outside the potentially explosive atmosphere and exclusively with the devices stated by the manufacturer!

Pin Outs Interface Connector					
PIN	Signal Name	Function	PIN	Signal Name	Function
1	USB_GND	USB	10	Cradle_DET	Grounded with device inside of cradle
2	USB_D_Plus	USB	11	DTR	RS232C
3	TxD	RS232C	12	Not assigned	Not assigned
4	RxD	RS232C	13	Power_IN	12 V / 2.5 A max.
5	DCD	RS232C	14	CTS	RS232C
6	RTS	RS232C	15	USB_5V_DET	USB
7	DSR	RS232C	16	USB_D_Minus	USB
8	GND	Erde, 2.5 A max.	17	EXT_Power_OUT	3.3 V @ 500 mA
9	RI	RS232C			

3.7 Product labelling (sample of UL Division 1 and ATEX/IECEX Zone 1)

MC 92N0 ^{ex} -IS		
A	Warning Laser	
B	Device Marking for UL <small>THIS CLASS B DIGITAL APPARATUS COMPLIES WITH CANADIAN ICES-003. CET APPAREIL NUMÉRIQUE DE LA CLASSE B EST CONFORME À LA NORME NMB-003 DU CANADA. COMPLIES WITH 21CFR1040.10 AND 1040.11 EXCEPT FOR DEVIATIONS PURSUANT TO LASER NOTICE No. 50, DATED JUNE 24, 2007, AND IEC/EN 60825-1:2001, 2007 & IEC/EN 62471:2006</small> <small>WARNING: SUBSTITUTION OF PARTS MAY IMPAIR INTRINSIC SAFETY. TO PREVENT IGNITION OF FLAMMABLE OR COMBUSTABLE ATMOSPHERES, DISCONNECT POWER BEFORE SERVICING. READ, UNDERSTAND AND ADHERE TO THE OPERATIONAL MANUAL. AVOID EXPOSURE. LASER LIGHT IS EMITTED FROM THIS APERTURE.</small> <small>THIS DEVICE CONTAINS AN APPROVED RADIO MODULE. SEE REGULATORY GUIDE FOR PATENT AND RADIO INFORMATION. SEALED! DO NOT OPEN! DO NOT CHARGE IN HAZ.LOC! SEE MANUAL FOR SPECIAL CONDITIONS!</small>	
B	Device Marking for ATEX/IECEX <small>COMPLIES WITH 21CFR1040.10 AND 1040.11 EXCEPT FOR DEVIATIONS PURSUANT TO LASER NOTICE No. 50, DATED JUNE 24, 2007 AND IEC/EN 60825-1:2001,2007 & IEC/EN 62471:2006</small>	
C	Warning Laser 	
D	Type Label	
	for UL 	for ATEX/IECEX

Battery Type 17-A1Z0-0001

A							
A Type Label	<table border="1" style="width: 100%; border-collapse: collapse;"> <tr> <td style="width: 30%;">BARTEC 97980 BAD MERGENTHEIM Germany</td> <td style="width: 40%;">TYPE: 17-A1Z0-0001 LI-ION 7.4 V / 2200 mAh S/N: 100 / 2407 MADE IN KOREA ASSEMBLED IN GERMANY</td> <td style="width: 30%; text-align: right;">EU</td> </tr> <tr> <td colspan="3"> <p>WARNING: MAY EXPLODE IF DISPOSED OF IN FIRE. DO NOT SHORT CIRCUIT OR DISASSEMBLE BATTERY. DO NOT CHARGE THE BATTERY IN HAZARDOUS AREA. BATTERY ONLY IN APPLICABLE WITH DEVICES TYPE OF THE 17-A11* or 17-A1A3.*</p> </td> </tr> </table>	BARTEC 97980 BAD MERGENTHEIM Germany	TYPE: 17-A1Z0-0001 LI-ION 7.4 V / 2200 mAh S/N: 100 / 2407 MADE IN KOREA ASSEMBLED IN GERMANY	EU	<p>WARNING: MAY EXPLODE IF DISPOSED OF IN FIRE. DO NOT SHORT CIRCUIT OR DISASSEMBLE BATTERY. DO NOT CHARGE THE BATTERY IN HAZARDOUS AREA. BATTERY ONLY IN APPLICABLE WITH DEVICES TYPE OF THE 17-A11* or 17-A1A3.*</p>		
BARTEC 97980 BAD MERGENTHEIM Germany	TYPE: 17-A1Z0-0001 LI-ION 7.4 V / 2200 mAh S/N: 100 / 2407 MADE IN KOREA ASSEMBLED IN GERMANY	EU					
<p>WARNING: MAY EXPLODE IF DISPOSED OF IN FIRE. DO NOT SHORT CIRCUIT OR DISASSEMBLE BATTERY. DO NOT CHARGE THE BATTERY IN HAZARDOUS AREA. BATTERY ONLY IN APPLICABLE WITH DEVICES TYPE OF THE 17-A11* or 17-A1A3.*</p>							

Battery Type 17-A1Z0-0002

A							
A Type Label	<table border="1" style="width: 100%; border-collapse: collapse;"> <tr> <td style="width: 30%;">BARTEC D-97980 BAD MERGENTHEIM</td> <td style="width: 40%;">TYPE: 17-A1Z0-0002 LI-ION 7.4 V / 2200 mAh S/N: 100 / 2407 MADE IN KOREA ASSEMBLED IN GERMANY</td> <td style="width: 30%; text-align: right;">US</td> </tr> <tr> <td colspan="3"> <p>ACCESSORY I.S. WHEN USED WITH BARTEC 17-A120 SERIES M.C. WARNING: MAY EXPLODE IF DISPOSED OF IN FIRE. DO NOT SHORT CIRCUIT OR DISASSEMBLE BATTERY. DO NOT CHARGE THE BATTERY IN HAZARDOUS AREA.</p> </td> </tr> </table>	BARTEC D-97980 BAD MERGENTHEIM	TYPE: 17-A1Z0-0002 LI-ION 7.4 V / 2200 mAh S/N: 100 / 2407 MADE IN KOREA ASSEMBLED IN GERMANY	US	<p>ACCESSORY I.S. WHEN USED WITH BARTEC 17-A120 SERIES M.C. WARNING: MAY EXPLODE IF DISPOSED OF IN FIRE. DO NOT SHORT CIRCUIT OR DISASSEMBLE BATTERY. DO NOT CHARGE THE BATTERY IN HAZARDOUS AREA.</p>		
BARTEC D-97980 BAD MERGENTHEIM	TYPE: 17-A1Z0-0002 LI-ION 7.4 V / 2200 mAh S/N: 100 / 2407 MADE IN KOREA ASSEMBLED IN GERMANY	US					
<p>ACCESSORY I.S. WHEN USED WITH BARTEC 17-A120 SERIES M.C. WARNING: MAY EXPLODE IF DISPOSED OF IN FIRE. DO NOT SHORT CIRCUIT OR DISASSEMBLE BATTERY. DO NOT CHARGE THE BATTERY IN HAZARDOUS AREA.</p>							

Battery Type B7-A2Z0-0006

A							
A Type Label	<table border="1" style="width: 100%; border-collapse: collapse;"> <tr> <td style="width: 30%;">BARTEC 97980 Bad Mergentheim Germany</td> <td style="width: 40%;">TYPE: B7-A2Z0-0006 LI-ION 7,4V / 2200 mAh (S) S/N: 1109-0190 WARNING: Do not disassemble, short circuit or dispose of in fire CAUTION: Risk of explosion if battery is replaced by an incorrect type. Dispose of used batteries according to instructions. BATTERY ONLY FOR USE IN DEVICES TYPE: SERIES B7-A2*9, B7-A2*8 and B7-A2*A</td> <td style="width: 30%;"></td> </tr> <tr> <td colspan="3"> <p>Cell origin Korea / Assembled in Korea</p> </td> </tr> </table>	BARTEC 97980 Bad Mergentheim Germany	TYPE: B7-A2Z0-0006 LI-ION 7,4V / 2200 mAh (S) S/N: 1109-0190 WARNING: Do not disassemble, short circuit or dispose of in fire CAUTION: Risk of explosion if battery is replaced by an incorrect type. Dispose of used batteries according to instructions. BATTERY ONLY FOR USE IN DEVICES TYPE: SERIES B7-A2*9, B7-A2*8 and B7-A2*A		<p>Cell origin Korea / Assembled in Korea</p>		
BARTEC 97980 Bad Mergentheim Germany	TYPE: B7-A2Z0-0006 LI-ION 7,4V / 2200 mAh (S) S/N: 1109-0190 WARNING: Do not disassemble, short circuit or dispose of in fire CAUTION: Risk of explosion if battery is replaced by an incorrect type. Dispose of used batteries according to instructions. BATTERY ONLY FOR USE IN DEVICES TYPE: SERIES B7-A2*9, B7-A2*8 and B7-A2*A						
<p>Cell origin Korea / Assembled in Korea</p>							

3.8 Laser labels

In compliance with IEC 60825 and EN 60825, Clause 5 the following information is provided:

<p>DEUTSCH</p> <p>KLASSE 1 KLASSE 1 LASER PRODUKT KLASSE 2 LASERLICHT NICHT IN DEN LASERSTRAHL SEHEN KLASSE 2 LASER PRODUKT</p>	
<p>ENGLISH</p> <p>CLASS 1 CLASS 1 LASER PRODUCT CLASS 2 LASER LIGHT DO NOT STARE INTO BEAM CLASS 2 LASER PRODUCT</p>	<p>FRENCH / FRANÇAIS</p> <p>CLASSE 1 PRODUIT LASER DE CLASSE 1 CLASSE 2 LUMIERE LASER NE PAS REGARDER LE RAYON FIXEMENT PRODUIT LASER DE CLASSE 2</p>
<p>ITALIAN / ITALIANO</p> <p>CLASSE 1 PRODOTTO AL LASER DI CLASSE 1 CLASSE 2 LUCE LASER NON FISSARE IL RAGGIOPRODOTTO AL LASER DI CLASSE 2</p>	<p>PORTUGUESE / PORTUGUÊS</p> <p>CLASSE 1 PRODUTO LASER DA CLASSE 1 CLASSE 2 LUZ DE LASER NÃO FIXAR O RAIOS LUMINOSO PRODUTO LASER DA CLASSE 2</p>
<p>DUTCH / NEDERLANDS</p> <p>KLASSE 1 KLASSE-1 LASERPRODUKT KLASSE 2 LASERLICHT NIET IN STRAAL STAREN KLASSE-2 LASERPRODUKT</p>	<p>DANISH / DANSK</p> <p>KLASSE 1 KLASSE 1 LASERPRODUKT KLASSE 2 LASERLYF SE IKKE IND I STRÅLEN KLASSE 2 LASERPRODUKT</p>
<p>NORWEGIAN / NORSK</p> <p>KLASSE 1 LASERPRODUKT, KLASSE 1 KLASSE 2 LASERLYS IKKE STIRR INN I LYSSTRÅLEN LASERPRODUKT, KLASSE 2</p>	<p>FINNISH / SUOMI</p> <p>LUOKKA 1 LUOKKA 1 LASERTUOTE LUOKKA 2 LASERVALO ÄLÄ TUIJOTA SÄDETTÄ LUOKKA 2 LASERTUOTE</p>

4. Transport and storage

4.1 Transport



Report any transport damage or incomplete deliveries immediately after receipt in writing to the forwarding company and BARTEC GmbH.

Any damage caused through incorrect storage shall not be covered by the warranty provisions of BARTEC GmbH.

4.2 Storage

ATTENTION

Property damage through incorrect storage!

- ▶ Observe storage temperatures.
- ▶ Keep humidity away from the Mobile Computers.

Additional information on the batteries

The batteries of BARTEC (Type 17-A1Z0-0001, 17-A1Z0-0002 and B7-A2Z0-0006) are developed and manufactured in accordance with the highest industrial standards. The operating time or storage period of a battery is restricted, however. The actual life of a battery is influenced by different factors, e.g. hot, cold, rough operating environment and falling from a great height. If a battery is kept longer than six months, the performance may be impaired on a permanent basis. Keep the batteries in a dry, cool place. For longer periods of storage, remove the batteries from the device to prevent self-discharge, rusting of metallic parts and the escape of electrolyte.

Batteries kept for the duration of 6 months or longer should be charged and then discharged again at least every 3 months. If electrolyte has escaped, do not touch the areas affected and dispose of the batteries as prescribed. Replace the battery if the operating time has shortened considerably.

The standard warranty period for all BARTEC batteries is 6 months, whereby it is irrelevant whether the battery was acquired separately or was contained in the scope of delivery of the MC92N0^{ex}.

5. Commissioning

Before you assemble the device, make sure that all components and documents exist.

Scope of delivery: 1 x MC92N0^{ex}
 1 x Lithium-ion battery 7.4 V / 2200 mAh
 1 x Screen protector
 1 x Stylus
 1 x User Manual

Optional: **Authorised accessories from BARTEC:**

- SD card
- Replacement stylus
- Battery 7.4 V / 2200 mAh
- Charging station
- Cradle
- Screen protector
- Leather holster

DANGER

Avoid electrostatic charging in potentially explosive atmosphere.
There is a risk of fatal injury in an explosive atmosphere!

- ▶ Do not wipe or clean the devices with a dry cloth.
- ▶ Wear suitable clothing and shoes.
- ▶ Do not use rubber gloves or similar.

DANGER

Unintended use endangers explosion protection.
There is a risk of fatal injury in an explosive atmosphere!

- ▶ Do not make any changes to the Mobile Computer.
- ▶ In the case of functional disturbances or damage to the enclosure, the device should be removed immediately from the potentially explosive atmosphere to a safe place. Remove battery to decommission the device!
- ▶ Do not use any battery replicas or batteries from other manufacturers.

5.1 Requirements in potentially explosive atmosphere

Mobile Computer

1. The Mobile Computer may not be opened.
2. Do not use, swap or replace any non-specified components.
3. Do not retrofit any components to the internal plugs or slots.
4. Protect the Mobile Computer from impact!
5. Do not expose the Mobile Computer to caustic/aggressive liquids, vapours, mists!
6. Avoid the impact of moisture outside the specifications.
7. Avoid thermal impact outside the specified temperature range.
8. Use the 17-pole data interface only outside the potentially explosive atmosphere and exclusively with the devices specified by the manufacturer!
9. Use the headset connection only outside the potentially explosive atmosphere and exclusively with the devices specified by the manufacturer!

Battery

1. The battery may not be opened.
2. Only charge the battery outside the potentially explosive atmosphere.
Only use the battery for the purpose listed in this User Manual. Is only suitable for the Mobile Computer MC92N0^{ex}-IS.
Battery type 17-A1Z0-0001 is only suitable for MC92N0^{ex}-IS (type 17-A1A3-...../.....)
Battery type 17-A1Z0-0002 is only suitable for MC92N0^{ex}-IS (type 17-A1A2-...../.....)
Battery type B7-A2Z0-0006 is only suitable for MC92N0^{ex}-NI (type B7-A2A1-...../..... and B7-A2A2-...../..... and B7-A2A4-...../.....)
3. There is a danger of burning if used incorrectly. Do not expose the battery to temperatures of more than +50 °C (122 °F).
4. Battery acid may escape from the cells and cause burning in the case of damage.
5. Defective batteries must be disposed of immediately, whereby the provisions on battery disposal applicable in the respective region must be observed.
6. The battery may explode if it catches fire!
7. Do not short circuit the battery!

Accessories

1. Only install or replace accessories outside the potentially explosive atmosphere.
2. Use accessories exclusively which have been tested or certified by BARTEC for this purpose.
3. The end user can replace the SD card, screen protector, keypad and leather holster himself.

5.2 First steps

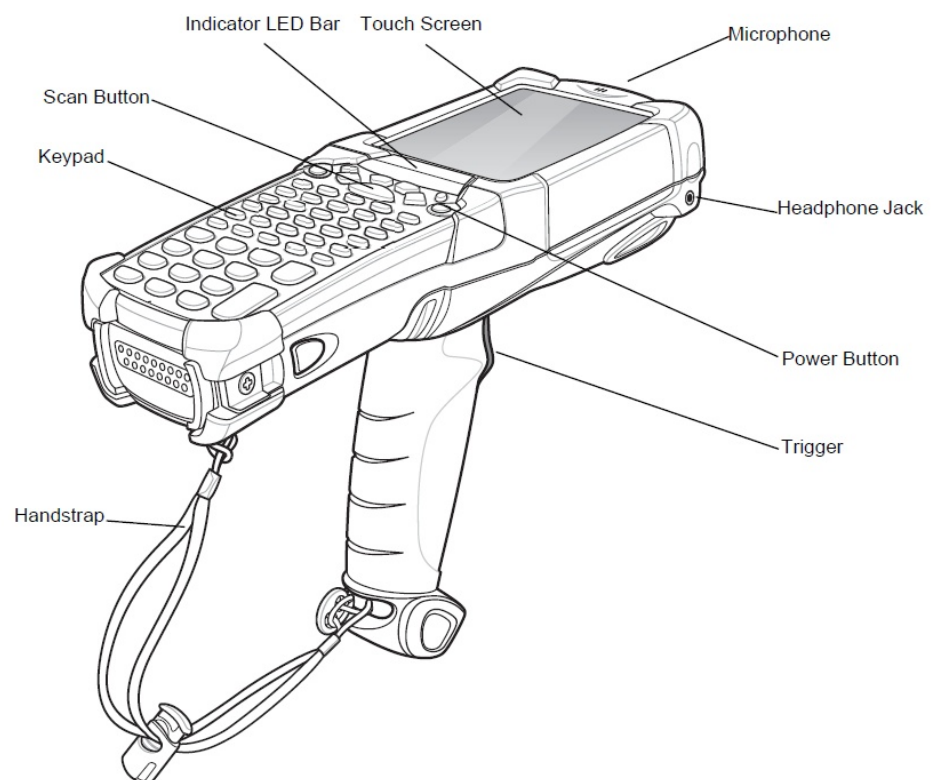
- Unpack the Mobile Computer.
- Insert the battery into the Mobile Computer.
- Charge the battery on the cradle.
- Switch on the Mobile Computer.

Optional:

- Charge the battery in a charger.
- Insert a SD card.
- Remove/replace screen protector.

The individual steps are explained on the following pages.

5.3 Structure



5.4 Handling accessories

DANGER

Non-certified accessories endanger explosion protection.

There is a risk of fatal injury in an explosive atmosphere!

- ▶ Only use original accessories from BARTEC /MOTOROLA.

Only permitted outside the potentially explosive atmosphere:

- ▶ Charge battery.
- ▶ Insert/replace SD card.
- ▶ Remove/replace screen protector.



Further information is also provided by the MOTOROLA documentation.

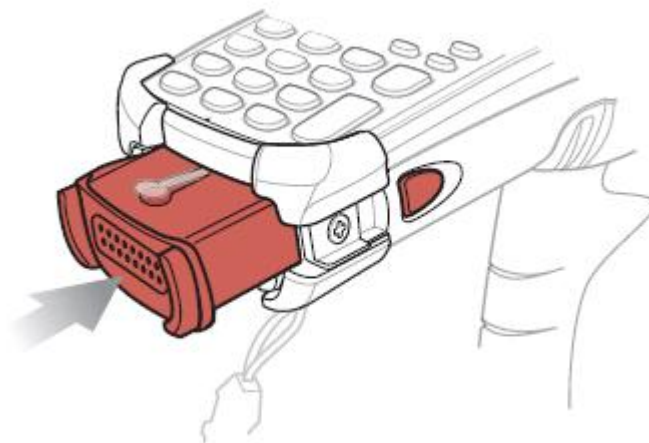
5.4.1 Insert battery

Depending on configuration, the MC92N0^{ex}-IS is supplied with a 7.4 V / 2200 mAh battery.

Available types	Order number	Charge time
Battery (EU) for ATEX/IECEX Lithium-ion battery 7.4 V / 2200 mAh	17-A1Z0-0001	Less than 8 hours
Battery (US) for UL Division 1 Lithium-ion battery 7.4 V / 2200 mAh	17-A1Z0-0002	Less than 8 hours
Battery for UL Division 2, ATEX Zone 2/22 Lithium-ion battery 7.4 V / 2200 mAh	B7-A2Z0-0006	Less than 8 hours

Work steps:

1. Charge the battery only outside hazardous areas.
2. Use only batteries which have been tested or certified by BARTEC for this purpose.
3. Insert the battery with the battery contacts facing forwards into the battery compartment under the keypad.
4. Make sure that the battery's charging contacts agree with the charging contacts in the battery compartment.
5. Push the battery into the battery compartment until it locks into place.



5.4.2 Change keypad

The MC92N0^{ex} has interchangeable modular keypads.

Danger

Non-certified accessories endanger explosion protection.
There is a risk of fatal injury in an explosive atmosphere!

- ▶ It must be ensured that only original keypads are used in safety-oriented operation.
- ▶ The use of imitation keypads from other manufacturers will render the type of ignition protection ineffective and there will then be a risk of fire or explosion.

Only permitted outside the potentially explosive atmosphere:

- ▶ The keypad may only be changed outside the hazardous area!
- ▶ Follow proper ESD precautions to avoid damaging the SD card. Proper ESD precautions include, but are not limited to, working on an ESD mat and ensuring that the operator is properly grounded.

ATTENTION

Incorrect handling may cause damage to property!

- ▶ Power off the MC92N0^{ex} before start of change parts.
- ▶ Put the MC92N0^{ex} into suspend mode before you remove the battery. Failure to properly remove the battery may cause the MC92N0^{ex} to cold boot and potential loss of data.

If the MC92N0^{ex} is in suspend mode, press the Power button to wake the device. Wait for the MC92N0^{ex} to fully awake from suspend mode.

1. Turn off the MC92N0^{ex}
2. Remove the battery. (see chapter 5.4.1 Insert/Remove battery)
3. Take out the screws at the top edge of the keypad.

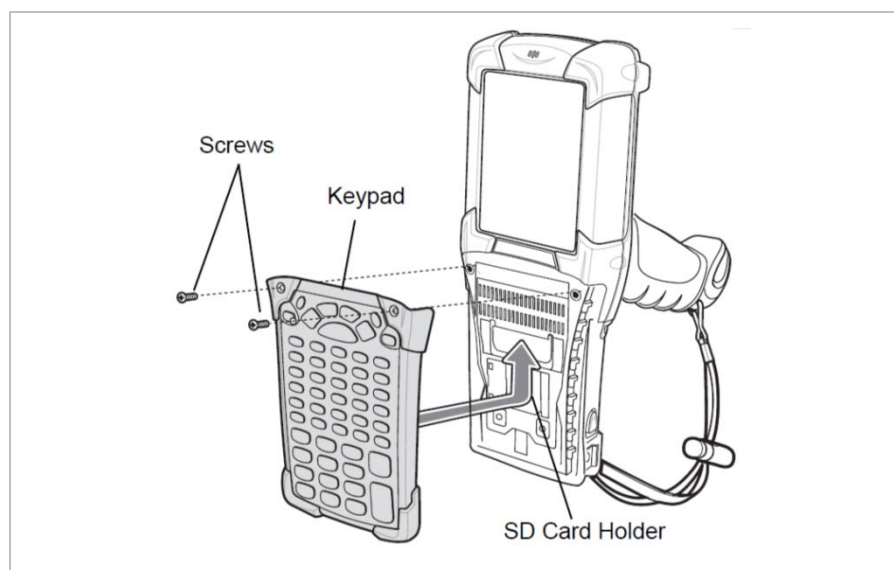


Figure: Removing the keypad

4. Pull the keypad downwards in the direction of the arrow and then forwards to take it out of the MC92N0^{ex}.
5. Check that the contacts and seals are clean and in good condition.
6. Snap on the keypad in the direction of the arrow (see Figure: Installing the keypad) and push it upwards until the boreholes for the screws are over the threaded sleeves.

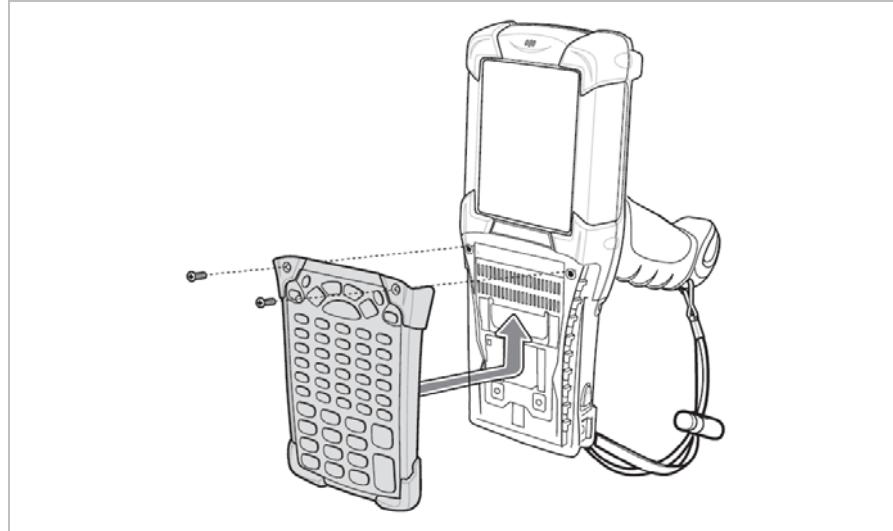


Figure: Installing the keypad

7. Check that the keypad is mounted correctly.



Figure: Keypad mounted correctly

Figure: Keypad mounted incorrectly

8. Push the keypad in the direction of the arrow (see Figure: Installing the keypad) until the boreholes on the keypad are positioned over the threaded holes on the enclosure.

ATTENTION

Incorrect handling may cause damage to property!

- ▶ Do not apply more than 0.452 NM or 4 in-lbs of torque when tightening the keypad screws.

9. After the exchange of the keyboard a cold boot (see chapter 7.1.4 Cold Boot) must be performed.
10. The current drivers are installed on the unit and initialized automatically by the cold boot.

5.4.3 Insert SD card

ATTENTION

Damage to the SD card through electrostatic discharges!

- ▶ Use an antistatic base.
- ▶ Ensure that the operator is correctly earthed.

Use only specified SD cards

1 GB	Order number 17-28BE-F006/0002
2 GB	Order number 17-28BE-F006/0003
4 GB	Order number 17-28BE-F006/0004
8 GB	Order number 17-28BE-F006/0005
16 GB	Order number 17-28BE-F006/0006
32 GB	Order number 17-28BE-F006/0007

Work steps

To install the SD card:

1. Only install or replace the SD card outside the potentially explosive atmosphere.
2. Only use SD cards which have been tested and certified by BARTEC for this purpose.
3. If the MC92N0^{ex} is in standby mode, press the red Power button to activate the device.
4. Press the red Power button to suspend the MC92N0^{ex}.
5. Remove the battery
6. Remove the two keypad screws and slide the keypad down and lift off (see chapter 5.4.2 Change keypad).
7. Lift the SD card retaining door.
8. Position the SD card, with the contacts down, into the SD card holder (shown in Figure: Inserting the SD card below). The SD card corner notch fits into the holder only one way.
9. Snap the retaining door closed.

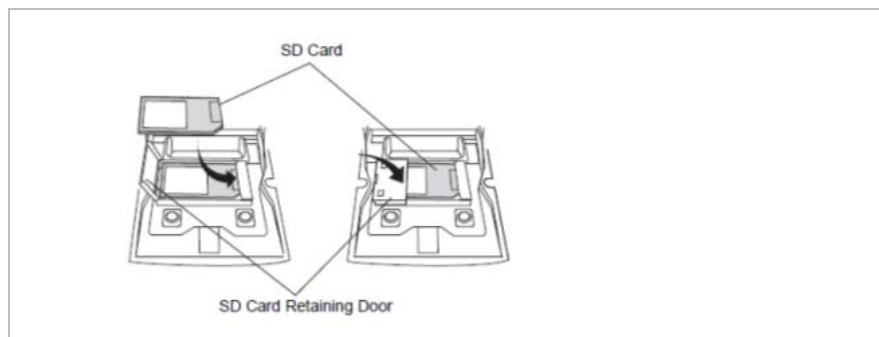


Figure: Inserting the SD card

10. Replace the keypad and re-attach using the two screws (see chapter 5.4.2 Change keypad)
11. Perform a warm boot that the Keypad is recognized by the system.

ATTENTION

Incorrect handling may cause damage to property!

- ▶ Do not apply more than 0.452 NM or 4 in-lbs of torque when tightening the keypad screws.

5.4.4 Remove/replace screen protector

The screen protector protects the touchscreen and improves the user friendliness of the device. With its relatively hard surface, the screen protector offers a mechanical protection against scratches for example and reduces disturbing light reflections.

 **Danger**

Use of a screen protector changes the Ex protection type of the MC92N0^{ex} to IIB. There is a risk of explosion when you use the MC92N0^{ex} in combination with screen protector in hazardous area with gas group IIC.

- ▶ Use of screen protector change the Ex protection type of the MC92N0 from IIC to IIB.

ATTENTION

Incorrect handling may cause damage to property!

- ▶ Use a screen protector so as not to impair the device warranty.
- ▶ Only use screen protector (Type 17-A1Z0-0003) from BARTEC.
- ▶ Observe the installation instructions for the screen protector.
- ▶ Do not use any sharp objects to remove the screen protector!

Display protection foil	
Ex protection	Ex IIB

Work steps

1. Only remove or replace the screen protector outside the potentially explosive atmosphere.
2. Clean the display carefully from any dust or dirt.
3. Lift a corner of the screen protector and remove it from the display.
4. Remove half of the thin cover film of the display protector and position the display protector and position the display protector on your display. Be aware that the display protector should be placed in the middle of your display.
5. Squeeze down the display protector lightly with a credit card from one side to the other on your display. At the same time remove the rest of the thin cover film. Smooth out existing bubbles with your credit card.

6. Attach the screen protector in accordance with the “Screen protector installation instructions”.



You can order screen protector from your customer consultant or from BARTEC. Installation instructions for the screen protector are part of the delivery scope. Part number: 17-A1Z0-0003 screen protector, pack of 5.



Sample picture

5.4.5 Holster and cases

BARTEC offers holsters to protect the MC92N0^{ex} series. The holsters are available in different versions that all variants can be protected.

Danger

Non-certified accessories endanger explosion protection.

There is a risk of fatal injury in an explosive atmosphere!

- ▶ It must be ensured that only original holsters and cases are used in safety-oriented operation.
- ▶ The use of holster or cases made of other materials as leather will render the type of ignition protection ineffective and there will then be a risk of fire or explosion.

ATTENTION

Incorrect handling may cause damage to property!

- ▶ Use only holster or cases what are made of leather.


Leather holster with ining

- for MC 92N0^{ex}-K RFID 03-9809-0023
- for MC 92N0^{ex}-G RFID 03-9809-0024
- for MC 92N0^{ex}-G and MC 92N0^{ex}-K with belt clip and turned part 03-9809-0026
- Turned part for holster 03-9809-0027

Leather holster with ining and keypad protection foil

- for MC 92N0^{ex}-K RFID 03-9809-0019
- for MC 92N0^{ex}-G RFID 03-9809-0020
- for MC 92N0^{ex}-G and MC 92N0^{ex}-K with belt clip and turned part 03-9809-0022
- Turned part for holster 03-9809-0027

5.4.6 Headset

 **Danger**

Headset what are not compliant to the saftey data of the headset connector endanger a risk of explosion.
 There is a risk of fatal injury in an explosive atmosphere!

► It must be ensured that only headset s in use what are compliant to the technical data of the headset connector.
 The safety orienttaded data can be found in the EC-type-Examination Certificate or in the chapter for the technical data in this manual.

Saftey orienttaded Headset Connector data:	
Ex protection	Ex ib IIC
U ₀	8,6V
I ₀	354mA
P ₀	479mW
C ₀	930nF
L ₀	460µH

6. Operation

The operator using an electric system in an potentially explosive environment must keep the accompanying operation equipment in a good condition, operate and monitor it correctly and conduct the requisite services and repairs. Before commissioning the devices, it must be checked that all components and documents are available.

6.1 Final inspection

The following aspects must be checked before putting the device into operation:

- ▶ Is there any damage to the display, scanner window or enclosure?
- ▶ Is the battery used certified?
- ▶ Is the battery compartment cover closed?
- ▶ Does the screen protector (if used) have the requisite certification?
- ▶ Is the SD card specified for the MC92N0^{ex}-IS?

6.2 Handling

Optimum standby position



Right:

The Mobile Computer is protected from damage.



Wrong:

The Mobile Computer can be damaged by objects on the surface or may fall down.

6.3 Operation recommendations and requirements

6.3.1 Basic safety and health protection requirements

Consult your local health and safety officer to ensure that you are acquainted with the safety regulations in your company which serve to protect employees at the work place.

6.3.1.1 Ergonomic recommendation

The following recommendations should be considered for everyday work at the workplace:

- Avoid one-sided, constantly repetitive movements.
- Body posture should be as neutral as possible.
- Avoid exercising great force.
- Keep objects which are used frequently within a functional distance.
- Adjust the working height to the body height and type of work.
- Erect objects without vibration.
- Avoid the exercise of direct pressure.
- Ensure that tables and chairs are adjustable.
- There must be sufficient room for body movements.
- Ensure that the working environment is suitable.
- Optimise workflows.
- Alternate between the left and right hand as frequently as possible when conducting repetitive tasks.

6.3.1.2 Vehicle installation

RF signals may impair incorrectly installed or inadequately shielded electronic systems in vehicles (including safety systems). If you have any questions on your vehicle, get in touch with the manufacturer or a sales person. You can also learn from the manufacturer whether additional equipment has been fitted to the vehicle. An airbag has a strong impact. Do NOT place objects, such as installed or portable radio equipment, in the area above the airbag or in the area of deployment of the airbag. If the radio equipment was not correctly installed in the vehicle, severe injuries may result if the airbag is triggered. Position the device within good range. Ensure that you have access to the device without having to take your eye off the road.



It is not permitted to connect a warning device which leads to horn sounds or light signals when receiving a call in road traffic.

Road traffic safety

Do not take any notes and do not use the device when driving. Making a list of to-do's or browsing through the address book when driving has a negative influence on safe driving. When driving on the roads, you must primarily think of your safety and that of the other road users. You should therefore concentrate completely on the road. Check the legal provisions on the use of wireless devices in road traffic of the respective region. Always observe these. If you use a wireless device during driving, rely on your good judgment and remember the following:

1. Become acquainted with the wireless device and its functions such as the shortcut dialing or dial repetition. These functions may prove to be useful if you would like to make a call without taking your eye off the road.
2. Where possible, use hands-free equipment.
3. Let your dialogue partner know that you are behind the steering wheel. Where necessary, discontinue the call in dense traffic or poor weather conditions. Rain, sleet, snow, ice and even very dense traffic represent dangers.
4. Dial the required numbers carefully and estimate the traffic situation. Make your calls when you have brought your car to a stop or before you leave. Plan your calls such that they can be made when the car is parked. If you really must make a call during the trip, only dial a part of the number, check the road and look in the rear view mirror and then dial the rest of the number.
5. Do not succumb to stressful and emotional telephone conversations which could take your attention from the road. Let your dialogue partner know that you are in a car and refrain from conversations which could take your attention away from the road.
6. Call for help using your mobile device if necessary. Dial the emergency services (9-1-1 in the USA and 1-1-2 in Europe) or other local emergency service numbers in the event of fire, accidents or medical emergencies. Remember that these calls are free of charge on the wireless device! The call can be made independently of security code or networks with or without the SIM card.
7. Help your fellow humans in emergency situations with your mobile device. If you witness a serious accident, crime or other emergency, call the emergency service (9-1-1 in the USA and 1-1-2 in Europe) or another local emergency service number because you could be the one who needs help next time.
8. Call the breakdown service or a special mobile radio number for support if you encounter problems on the road. If you pass a car with a breakdown, which does not represent a serious impediment to traffic, pass traffic lights which do not function, a traffic accident with slight damage and without injured people or a possibly stolen car, please get in touch with the road police or another special mobile radio number for support.
9. "The mobile communication industry requests you to give safety priority when using your device/telephone."

6.3.1.3 Information for the use of wireless devices

Heed all warnings referring to the use of wireless devices.

6.3.1.4 Safety in aircraft

Switch off the wireless device when asked to do so by the ground staff and by employees of the airline. If your device has a flight mode or a similar function, find out about its correct use from the aircraft staff.

6.3.1.5 Safety in hospitals

Wireless devices emit radio frequencies and can cause disturbances to medical technical electrical devices. Wireless devices should be switched off on request when you are in hospitals, clinics or health establishments. This is intended to avoid any possible interference with sensitive medical equipment.

6.3.1.6 Heart pacemakers

Manufacturers recommend that a minimum distance of 15 cm be observed between a wireless handheld device and a pacemaker to avoid potential interference. This guideline is in line with independent research results and recommendations of Wireless Technology Research.

- Wearers of heart pacemakers
- Persons with heart pacemakers should ALWAYS keep at least 15 cm away from the activated device.
- The device may not be worn by these persons in the breast pocket.
- The device should be held to the ear which is furthest away from the heart pacemaker.
- If you have reason to assume that interference has arisen, you should SWITCH OFF the device immediately.

6.3.1.7 Hearing aids

The wireless device may cause disturbances to hearing devices. Get in contact with the manufacturer of your hearing device in the case of disturbances to ask about possible solutions.

- The device may not be worn in the breast pocket of these persons.
- The device should be held to the ear which is furthest away from the heart pacemaker.
- If you have reason to assume that interference has arisen, you should SWITCH OFF the device immediately.

6.3.1.8 Other medical equipment

Ask your doctor or the manufacturer of the medical device to determine whether putting the wireless product into operation impairs the medical device.

6.3.2 Equipment of the laser devices

Devices from BARTEC / MOTOROLA equipped with lasers complies with 21CFR1040.10 and 1040.11 except for deviations pursuant to Laser Notice No. 50, dated June 24, 2007, EN60825-1: 2007 and IEC60825-1 (Ed. 2.0)

The laser classification is marked on one of the labels on the device.

Class 1 Laser devices are not considered to be hazardous when used for their intended purpose.

Class 2 laser scanners use a low power, visible light diode. As with any very bright light source, such as the sun, the user should avoid staring directly into the light beam.

Momentary exposure to a Class 2 laser is not known to be harmful.

CAUTION

Use of controls, adjustments or performance of procedures other than those specified herein may result in hazardous laser light exposure.

6.3.3 LED Devices

Complies with IEC/EN60825-1:2001 & IEC/EN62471:2006.

6.3.4 Regulatory information for wireless devices



The use of wireless devices is possibly forbidden or restricted. This applies primarily on board aircraft, in hospitals, in the vicinity of explosive substances or under other hazardous conditions. If you are not sure which regulations apply to the use of the device, ask permission before switching it on.

Radio Modules

The device contains approved radio module(s). These module(s) are identified below.

BARTEC / Motorola radio module supporting WLAN 802.11 a/b/g/n and Bluetooth.

Type(s): 21-148603-0B

Bluetooth® Wireless Technology

This is an approved Bluetooth® product. For more information or to view End Product Listing, please visit <https://www.bluetooth.org/tpg/listings.cfm>

Country Roaming

This device incorporates the International Roaming feature (IEEE802.11d) which will ensure the product operates on the correct channels for the particular country of use.

Ad-Hoc Operation (5 GHz Band)

Ad-Hoc operation is limited to Channels 36-48 (5150 - 5250 MHz). Use of this band is restricted to Indoor Use Only, any other use will make the operation of this device illegal.

Frequency of Operation – FCC and IC

5 GHz Only

The use in the UNII (Unlicensed National Information Infrastructure) band 1 5150 -5250 MHz band is restricted to Indoor Use Only; any other use will make the operation of this device illegal.

Industry Canada Statement

Caution: The device for the band 5150-5250 MHz is only for indoor usage to reduce potential for harmful interference to co-Channel mobile satellite systems. High power radars are allocated as primary users (meaning they have priority) of 5250-5350 MHz and 5650-5850 MHz and these radars could cause interference and/or damage to LE-LAN devices.

Avertissement: Le dispositif fonctionnant dans la bande 5150-5250 MHz est réservé uniquement pour une utilisation à l'intérieur afin de réduire les risques de brouillage préjudiciable aux systèmes de satellites mobiles utilisant les memes canaux.

Les utilisateurs de radars de haute puissance sont désignés utilisateurs principaux (c.-à-d., qu'ils ont la priorité) pour les bands 5250-5350 MHz et 5650-5850 MHz et que ces radars pourraient causer du brouillage et/ou des dommages aux dispositifs LAN-EL.

2.4 GHz Only

The available channels for 802.11 b/g operation in the US are Channels 1 to 11. The range of channels is limited by firmware.

Radio Frequency Interference Requirements - FCC



Note: This equipment has been tested and found to comply with the limits for a Class B digital device, pursuant to Part 15 of the FCC rules. These limits are designed to provide reasonable protection against

harmful interference in a residential installation. This equipment generates, uses and can radiate radio frequency energy and, if not installed and used in accordance with the instructions, may cause harmful interference to radio communications. However there is no guarantee that interference will not occur in a particular installation. If this equipment does cause harmful interference to radio or television reception, which can be determined by turning the equipment off and on, the user is encouraged to try to correct the interference by one or more of the following measures:

- Reorient or relocate the receiving antenna.
- Increase the separation between the equipment and receiver.
- Connect the equipment into an outlet on a circuit different from that to which the receiver is connected.
- Consult the dealer or an experienced radio/TV technician for help.

FCC Note according to 15.21

Any changes or modifications not expressly approved by the party responsible for compliance could void the user's authority to operate the equipment.

Radio Transmitters (Part 15)

This device complies with Part 15 of the FCC rules. Operation is subject to the following two conditions:

- (1) this device may not cause harmful interference, and
- (2) this device must accept any interference received, including interference that may cause undesired operation.

Radio Frequency Interference Requirements - Canada

This Class B digital apparatus complies with Canadian ICES-003.

Cet appareil numérique de la classe B est conforme à la norme NMB-003 du Canada.

Radio Transmitters

This device complies with RSS 210 of Industry & Science Canada. Operation is subject to the following two conditions:

- (1) this device may not cause harmful interference and
- (2) this device must accept any interference received, including interference that may cause undesired operation.

Le présent appareil est conforme aux CNR d'Industrie Canada applicables aux appareils radio exempts de licence. L'exploitation est autorisée aux deux conditions suivantes:

- (1) l'appareil ne doit pas produire de brouillage, et
- (2) l'utilisateur de l'appareil doit accepter tout brouillage radioélectrique subi, même si le brouillage est susceptible d'en compromettre le fonctionnement.

Label Marking: The Term "IC:" before the radio certification only signifies that "Industry Canada" technical specifications were met.

Country approvals

Regulatory markings, subject to certification, are applied to the device signifying the radio(s) is/are approved for use in the following countries: United States, Canada, Japan, China, S. Korea, Australia, and Europe.

Detailed information on the test symbol for other countries is provided in the EC declaration of conformity.

- **Note:** For 2.4-GHz-products: Europe covers, Belgium, Bulgaria, Denmark, Germany, Estonia, Finland, France, Greece, Great Britain, Ireland, Iceland, Italy, Latvia, Liechtenstein, Lithuania, Luxembourg, Malta, Netherlands, Norway, ~~Austria~~, Poland, Portugal, Romania, Sweden, Switzerland, Slovakia, Slovenia, Spain, Czech Republic, Hungary and Cyprus.

⚠ WARNING

Operation of the device without regulatory approval is illegal.

Radio Transmitters

For RLAN Devices:

The use of 5 GHz RLAN's, for use in Canada, have the following restrictions:

- Restricted Band 5.60 – 5.65 GHz

This device complies with RSS 210 of Industry Canada. Operation is subject to the following two conditions:

- (1) this device may not cause harmful interference and
- (2) this device must accept any interference received, including interference that may cause undesired operation.

Ce dispositif est conforme à la norme CNR-210 d'Industrie Canada applicable aux appareils radio exempts de licence. Son fonctionnement est sujet aux deux conditions suivantes:

- (1) le dispositif ne doit pas produire de brouillage préjudiciable, et
- (2) ce dispositif doit accepter tout brouillage reçu, y compris un brouillage susceptible de provoquer un fonctionnement indésirable.

Label Marking: The Term "IC:" before the radio certification only signifies that Industry Canada technical specifications were met.

**Compliance Information Statement
(Declaration of Conformity Procedure)**

Responsible Party:
BARTEC US Corp

Address:
600 Century Plaza Drive
Suite C160
Houston, TX 77073
USA

Telephone:
+ 1 281 214 8542

Type of Equipment:
Mobile Computer



Model Name:
MC92N0ex IS / MC92N0ex NI

FCC ID: TBUMC92N0EX

6.4 Electromagnetic fields

6.4.1 International

Reducing RF Exposure – Use Properly

Only operate the device in accordance with the instructions supplied.

International

The device complies with internationally recognized standards covering human exposure to electromagnetic fields from radio devices. For information on “International” human exposure to electromagnetic fields refer to the BARTEC and Motorola Declaration of Conformity (DoC) at <http://www.motorolasolutions.com/doc>.

For further information on the safety of RF energy from wireless devices – see <http://responsibility.motorolasolutions.com/index.php/downloads/>, located under Wireless Communications and Health.

Europe

Handheld Devices

This device was tested for typical body-worn operation. Use only BARTEC Motorola tested and approved belt-clips, holsters, and similar accessories to ensure EU Compliance.

US and Canada

Co-located statement

To comply with FCC RF exposure compliance requirement, the antenna used for this transmitter must not be co-located or operating in conjunction with any other transmitter/antenna except those already approved in this filling.

Handheld Devices

This device was tested for typical body-worn operation. Use only BARTEC Motorola tested and approved belt-clips, holsters, and similar accessories to ensure FCC Compliance. The use of third-party belt-clips, holsters, and similar accessories may not comply with FCC RF exposure compliance requirements, and should be avoided.



The MC92N0^{ex} should only be worn on the body when switched off.

6.4.2 Handheld devices

To comply with the FCC guidelines for high frequency devices, the aerial of the transmitter should be used in the direct vicinity of, or in an operation unit with, other transmitters/aerials with the exception of those approved in this document.

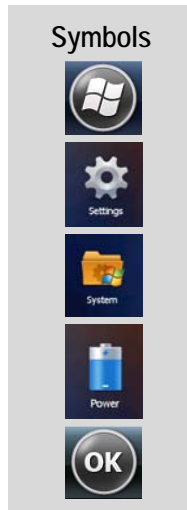
SD card

The SD card slot provides a secondary, non-volatile memory. The slot is located at the side of the MC92N0^{ex} (see figure). Further information is provided in the documentation supplied with the card. Observe the manufacturer's recommendations on use.

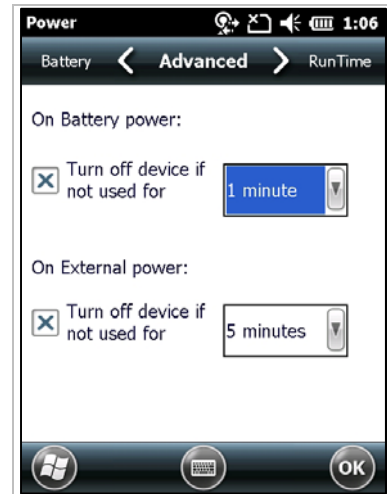
6.5 Optimise operating times/change energy settings (WEH 6.5.3 only)

Factory settings of the MC92N0^{ex} for the WWAN and WLAN radio devices: ON.

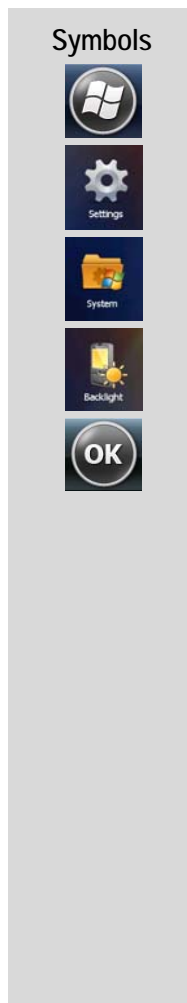
6.5.1 Automatic shutdown in the case of lengthy standby periods



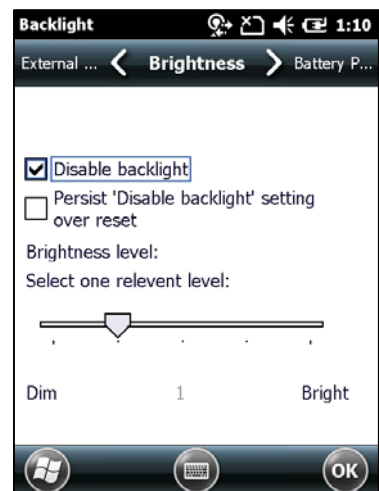
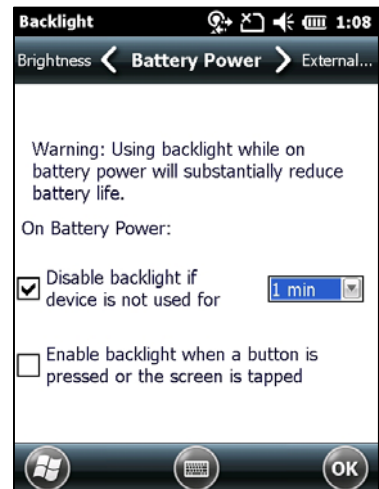
- In the start menu under:
- > Settings symbol
 - > System symbol
 - > Power symbol
 - > Advanced tab
 - > Activate "Turn off device if not used for" box and select a value from the dropdown list.
 - > Confirm selection with "OK".



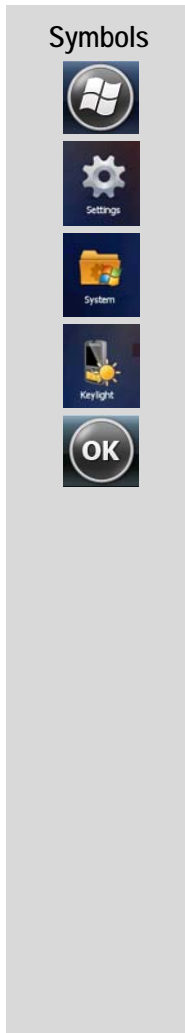
6.5.2 Change display backlight (increases the operating time of the battery)



- In the start menu under:
- > Settings symbol
 - > System symbol
 - > Backlight symbol
 - > Battery Power tab
 - > Activate "Disable backlight if device is not used for" box and select a value from the dropdown list.
 - > Brightness tab
 - > Select Disable backlight option. The brightness of the backlight can be regulated with a controller.
 - > Confirm selection with "OK".



6.5.3 Change keypad background lighting (increases the operating time of the battery)



In the start menu under:

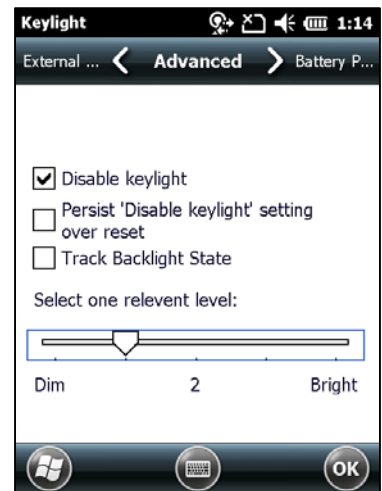
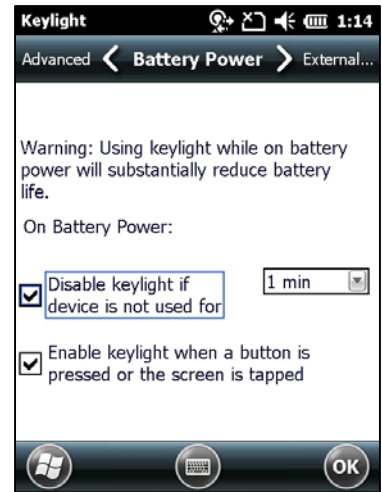
- > Settings symbol
- > System symbol
- > Keypad symbol
- > Battery Power tab

Activate "Disable keypad if device is not used for" option and select a value from the dropdown list.

- > Advanced tab

Select "Disable keypad" option. The brightness of the backlight can be regulated with a controller or switched off.

- > Confirm selection with "OK".

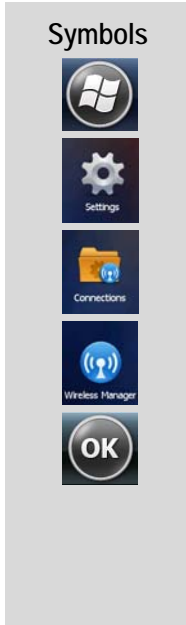


6.5.4 Switch off radio connections



Products with Bluetooth® Wireless technology:

This device is an approved Bluetooth® product. Further information is available at <http://www.bluetooth.org/tpg/listings.cfm> Manufacturer: MOTOROLA



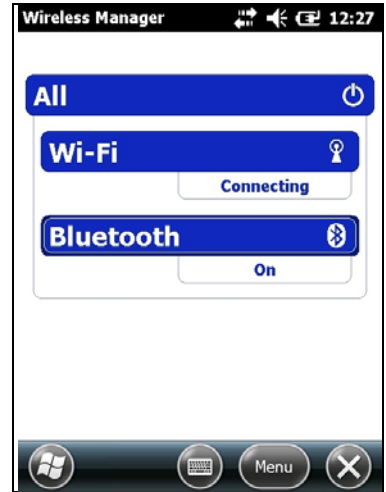
Windows Mobile 6.5.3 devices have a simple and central possibility in the form of the Wireless Manager to deactivate and configure all wireless functions of the device.

In the start menu under:

- > Settings symbol
- > System symbol
- > Connections symbol
- > Wireless Manager symbol

Activate/deactivate wireless connection:

- > activate respective button.
- > All button



Wireless connections depend on the configuration.

6.6 Software versions

Existing software versions and operating systems in the MC92N0^{ex}:

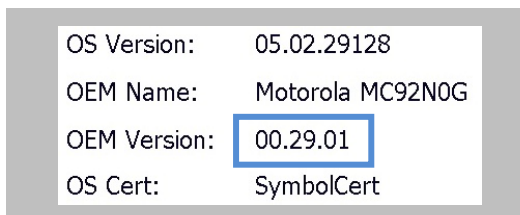
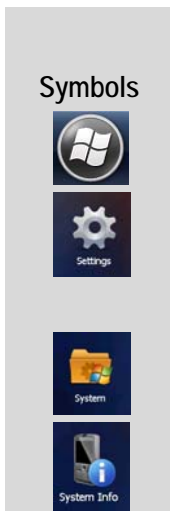


The software is not relevant to the explosion protection of the device. See the MOTOROLA documentation for further information.

6.6.1 OEM

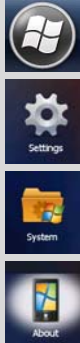
In the start menu under:

- > Settings symbol
- > System symbol
- > System Info symbol
- > System tab



6.6.2 Storage battery

Symbols

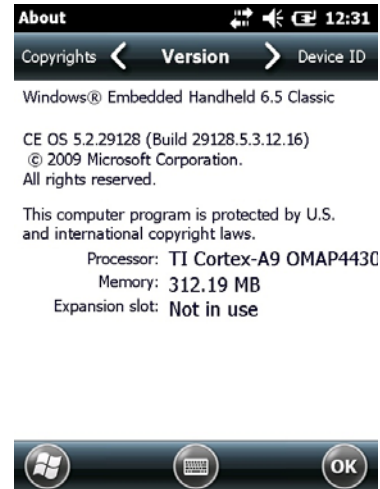


In the start menu under:

- > Settings symbol
- > System symbol
- > About symbol
- > Version tab

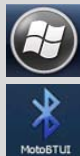
Windows® Embedded Handheld 6.5 Classic
CE OS 5.2.29128 (Build 29128.5.3.12.16)
© 2009 Microsoft Corporation.
All rights reserved.

The last part of the build number contains storage battery number.



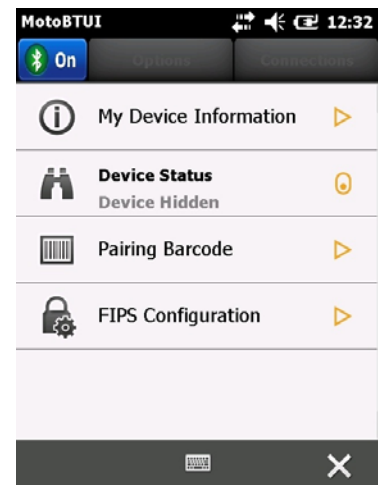
6.6.3 Bluetooth

Symbols



In the start menu under:

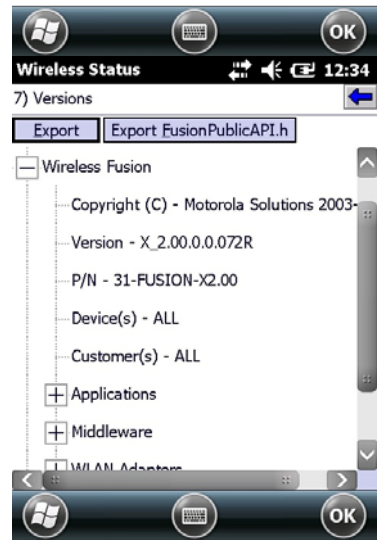
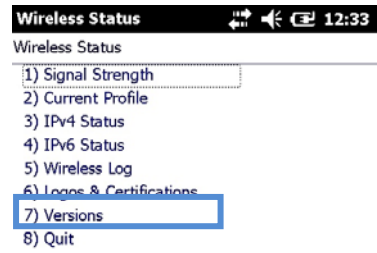
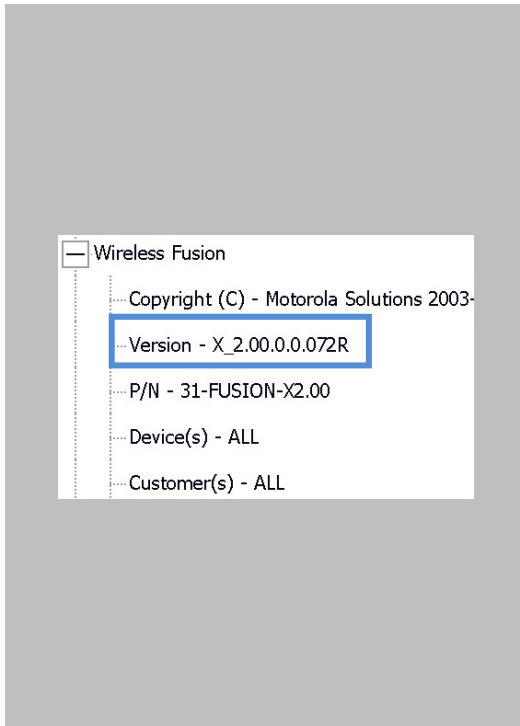
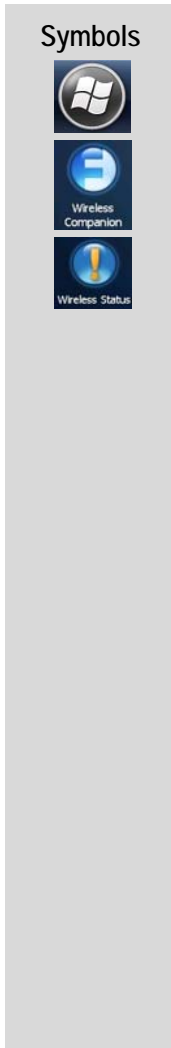
- > Moto BT UI Information symbol
- > My Device Information symbol



The MC92N0^{ex} with Bluetooth technology uses either the StoneStreet Bluetooth stack or the Microsoft Bluetooth stack. To write an application that uses the StoneStreet One Bluetooth stack APIs refer to the Motorola Solutions Enterprise Mobility Developer Kit (EMDK) Help. Further information is provided in the MOTOROLA “User Manual on Integration”.

6.6.4 "Fusion" software

- In the start menu under:
- > Wireless Companion symbol
 - > Wireless Status symbol
 - > Point 7 "Versions"



7. Faults and troubleshooting

DANGER

There is a risk of fatal injury in an explosive atmosphere!

- ▶ Examine defective devices and any accessories only outside the potentially explosive atmosphere.



Information on fault rectification is provided in the User Manual or the Integration Manual from MOTOROLA.

<http://www.motorola.com/Business/US-EN/Enterprise+Mobility>
on the MOTOROLA website.

MOTOROLA website for the MC 9200 manuals for the non-Ex protected version

- Support
- Mobile Computer, Barcode Scanners & RFID => Get Product Manuals
- Product Manuals
- Mobile Computers
- MC 9200
- Click on “More” to obtain the complete list.

7.1 Resetting the MC92N0^{ex}

7.1.1 Windows Embedded Handheld and Windows CE Devices

If the applications stop working while the MC92N0^{ex} is used, it is recommendable to reboot the device.

There are two re-booting functions: warm boot and cold boot. If these types of rebooting don't help, the MC92N0^{ex} operating system can be reset to the factory defaults by a clean boot.

- A warm boot starts the MC92N0^{ex} again and shuts down all running programs.
- A cold boot also restarts the MC92N0^{ex}, but erases all stored records and entries in RAM. Data saved in flash memory or a memory card is not lost. In addition it returns formats, preferences and other settings to the factory default settings.
- A clean boot restores the operating system to the factory defaults.

WARNING

Incorrect handling may cause damage to property!

Data stored in the flash memory or on a memory card is not lost. First perform a warm boot. The MC92N0^{ex} is re-started and all stored data records and entries are preserved. If the MC92N0^{ex} still does not respond after a warm boot, perform a cold boot.

7.1.2 On a Windows CE 7.0 device

 **WARNING**

Incorrect handling may cause damage to property!

Do not hold down any key, other than the Power button during a reset. Performing a cold boot restores formats, preferences and other settings to the default settings.



Any data previously synchronized with a computer can be restored during the next ActiveSync operation.

7.1.3 Warm boot

Executing a warm boot

Hold down the Power button for approximately five seconds. As soon as the MC92N0^{ex} starts to perform a warm boot release the Power button.

7.1.4 Cold Boot

Executing a cold boot

A cold boot restarts the MC92N0^{ex} and erases all user stored records and entries that are not saved in flash memory (Application and Platform folders) or a memory card. Never perform a cold boot unless a warm boot does not solve the problem.

To perform a cold boot:

10. Press the red Power button. The PowerKey Action window appears.
11. Tap Safe Battery Swap.
12. Press the primary battery release on the MC92N0^{ex} to partially eject the battery from the MC92N0^{ex}. (described in chapter 5.4.1 Insert battery)
13. While the battery is partially released, simultaneously press and release the handle trigger and the Power button.
14. Push the battery to fully re-insert it in the MC92N0^{ex}. One audible click can be heard as the battery is fully inserted.
15. The MC92N0^{ex} reboots.
16. Calibrate the screen. See Calibrating the Screen in the Motorola User Guide to calibrate the MC92N0^{ex} screen.

7.1.5 On a Windows Embedded Handheld 6.5.3 device

WARNING

Incorrect handling may cause damage to property!

Do not hold down any key, other than the Power button during a reset. Performing a cold boot restores formats, preferences and other settings to the default settings.

Any data previously synchronized with a computer can be restored during the next ActiveSync operation.

Data saved in flash memory or a memory card is not lost. Perform a warm boot first. This restarts the MC92N0^{ex} and saves all stored records and entries. If the MC92N0^{ex} still does not respond, perform a cold boot.



7.1.6 Warm boot

Executing a warm boot

Hold down the Power button for approximately five seconds. As soon as the MC92N0^{ex} starts to perform a warm boot release the Power button.

7.1.7 Cold Boot

Executing a cold boot

A cold boot restarts the MC92N0^{ex} and erases all user stored records and entries that are not saved in flash memory (Application and Platform folders) or a memory card. Never perform a cold boot unless a warm boot does not solve the problem.

To perform a cold boot:

17. Press the red Power button. The PowerKey Action window appears.
18. Tap Safe Battery Swap.
19. Press the primary battery release on the MC92N0^{ex} to partially eject the battery from the MC92N0^{ex}. (described in chapter 5.4.1 Insert battery)
20. While the battery is partially released, simultaneously press and release the handle trigger and the Power button.
21. Push the battery to fully re-insert it in the MC92N0^{ex}. One audible click can be heard as the battery is fully inserted.
22. The MC92N0^{ex} reboots.

7.1.8 Clean Boot

 **WARNING**

Incorrect handling may cause damage to property!

Do not hold down any key, other than the Power button during a reset. Performing a cold boot restores formats, preferences and other settings to the default settings.

A clean boot resets the MC92N0^{ex} to the factory default settings. All data in the Application folder is retained. You must download the Clean Boot Package file from the Support Central web site by Motorola

23. Download the Clean Boot Package from the Motorola Support Central. Follow the instructions included in the package for installing the package onto the MC92N0^{ex}.
24. Press the red Power button. The PowerKey Action window appears.
25. Tap Safe Battery Swap.
26. Press the primary battery release on the MC92N0^{ex} to partially eject the battery from the MC92N0^{ex}. (described in chapter 5.4.1 Insert battery)
27. While the battery is partially released, simultaneously press and release the trigger and the Power button.



After you insert the battery you have two seconds to press the trigger or left scan button.

28. Push the battery to fully re-insert it in the MC92N0^{ex}. One audible click can be heard as the battery is fully inserted.
29. Press and hold the trigger.
30. Connect the MC92N0^{ex} to AC power using the CAM or insert the MC92N0^{ex} into a powered cradle.
31. The MC92N0^{ex} updates and then re-boots.
32. The calibration screen appears.

8. Service, inspection, repair

Commissioning and service of Mobile Computers may be conducted exclusively by trained and qualified staff! The staff is familiar with the installation, assembly, commissioning and operation of the Mobile Computers, has been informed about the risks and has the qualifications necessary for this work.

8.1 Service intervals

The mechanical state of the device should be regularly checked. The service intervals will depend on the ambient conditions. We recommend that a service be conducted at least once a year. Regular servicing is not necessary if the device is correctly operated in accordance with the installation instructions and under appropriate consideration of the ambient conditions.

DANGER

Prevent electrostatic charging in potentially explosive atmospheres.
There is a risk of fatal injury in an explosive atmosphere!

- ▶ Do not dry wipe or clean devices.

8.2 Inspection

According to EN 60079-17 and EN 60079-19, the owner/operator of electrical plants in potentially explosive atmospheres is obliged to have these plants checked by an electrician to ensure that they are in a correct condition.

8.3 Service and repair work

In addition to Directive 99/92/EC, the standards EN 60079-17 and EN 60079-19 also apply to the servicing and repair as well as the testing of accompanying operating devices.

Work connected with assembly/dismantling, operation and servicing may only be conducted by trained specialists. All statutory requirements and other binding guidelines on occupational health and safety, accident prevention and environmental protection must be observed.

8.3.1 Information on sending in for repairs

The following information is required for the repair.

- Series number of the device (see manufacturer's label)
- Model number or product name (see manufacturer's label)
- Software type and version number (see Chapter 6.7)



Please read through the handling guidelines for the RMA process before you send in a defective device for repair. Then complete the RMA form (Return Merchandise Authorization), sign it and send it to our "Returns Centre".

E-Mail: services@bartec.de
Fax: +49 7931 597-119

We cannot guarantee the processing within the contractually agreed period for any returns received by us without RMA number.

The handling guidelines and the RMA form are available for download from our website:

<http://www.bartec.de>
> Quality and culture
> RMA form

If you have any questions, please send us an e-mail or give us a call.

E-Mail: services@bartec.de
Telephone: +49 7931 597-444

9. Disposal

The Mobile Computers contain metallic and plastic parts and electronic components.



The statutory requirements for electrical scrap must be observed for disposal, e.g. disposal by an authorised disposal company.













10. Forwarding and packaging information

ATTENTION

Sensitive devices! Damage may be caused by incorrect packaging!

► Use original packaging for transport.

11. Accessories

Mobile Computer - Accessories for series MC 92N0 ^{ex} -IS		BARTEC order number
	Spare Battery for MC 92N0 ^{ex} -IS ATEX/IECEX Zone 1 - 7.4 V/2200 mAh, Lithium ion battery	17-A1Z0-0001
	Spare Battery for MC 92N0 ^{ex} -IS Class I, II, III Division 1 Groups A, B, C, D, F and G - 7.4 V/2200 mAh, Lithium ion battery	17-A1Z0-0002
	Expanded Memory - recommended ATP Industrial Grade SD card with 1 GB - recommended ATP Industrial Grade SD card with 2 GB - recommended ATP Industrial Grade SD card with 4 GB - recommended ATP Industrial Grade SD card with 8 GB - recommended ATP Industrial Grade SD card with 16 GB	17-28BE-F006/0002 17-28BE-F006/0003 17-28BE-F006/0004 17-28BE-F006/0005 17-28BE-F006/0006
	Protective Display Foil - 5 pcs	17-A1Z0-0003
	Keypad with overlay (green) ATEX/IECEX Zone 1 Class I, II, III Division 1 Groups A, B, C, D, F and G - with 28 keys - with 43 keys - with 53 keys - with 53 keys for VT emulation - with 53 keys for 3270 emulation - with 53 keys for 5250 emulation	05-0080-0388 05-0080-0389 05-0080-0390 05-0080-0391 05-0080-0392 05-0080-0393
	Single Slot Cradle Set for non-hazardous area Docking station for communication with PC - for data synchronization - for software installation Including: - RS232 connection cable Cradle <-> PC - USB connection cable Cradle <-> PC - Charging compartment for Lithium-Ion battery - Power supply unit and line cord (EU)	05-0079-0018
	4-Slot Ethernet Cradle Set for non-hazardous area - 4-slot ethernet cradle - Power supply - DC line cord AC Line cord - 3 wired - EU AC Line cord - 3 wired - US	03-9849-0026 03-9911-0021 03-9919-0010 03-9609-0011 03-9609-0021
	4-Slot Charging Cradle Set for non-hazardous area - 4-slot charging cradle - Power supply - DC Line cord AC Line cord - 3 wired - EU AC Line cord - 3 wired - US	03-9849-0052 03-9911-0021 03-9919-0010 03-9609-0011 03-9609-0021
	Spare Stylus for MC 92N0 ^{ex} series - 10 pcs per package - 3 pcs pro package, grey, with tether	03-9849-0021 03-9849-0043
	Spare Hand Strap Set for MC 92N0 ^{ex} series Gun - 3 pcs per package for MC 92N0 ^{ex} series Brick - 5 pcs per package - 1 pcs holder for hand strap	03-9849-0049 03-9849-0050 03-9849-0056
	Leather Holster To clip on the belt For use in hazardous area. - for MC 92N0 ^{ex} series RFID - for MC 92N0 ^{ex} series RFID - for MC 92N0 ^{ex} series Gun and Brick with belt clip and turned part	03-9809-0010 03-9809-0023 03-9809-0024 03-9809-0026 03-9809-0027
	Turned part for holster	