

BPR1000 Mobile Router Quick Installation Guide

1. Verify Package Contents

The BPR1000 Mobile Router package should contain the items Listed below .
If any of the items are missing please contact your Reseller .

- **BPR1000 Router**



- **Ethernet Cable**



- **DC 5V/2A Power Adapter**



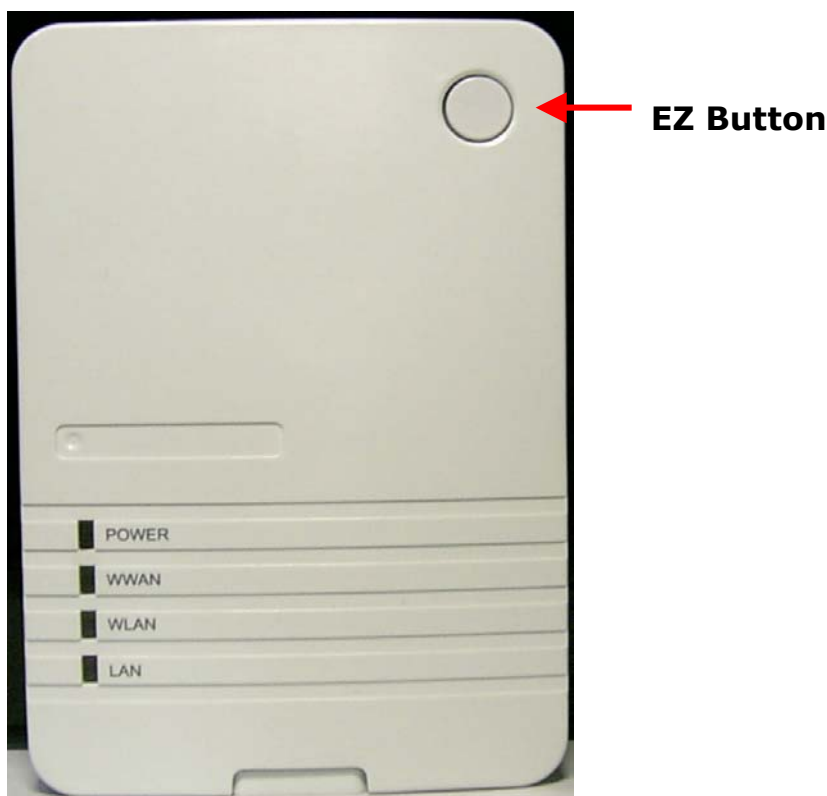
- **User Guide on CD-ROM**



- **Quick Installation Guide**

2. Connections and LEDS

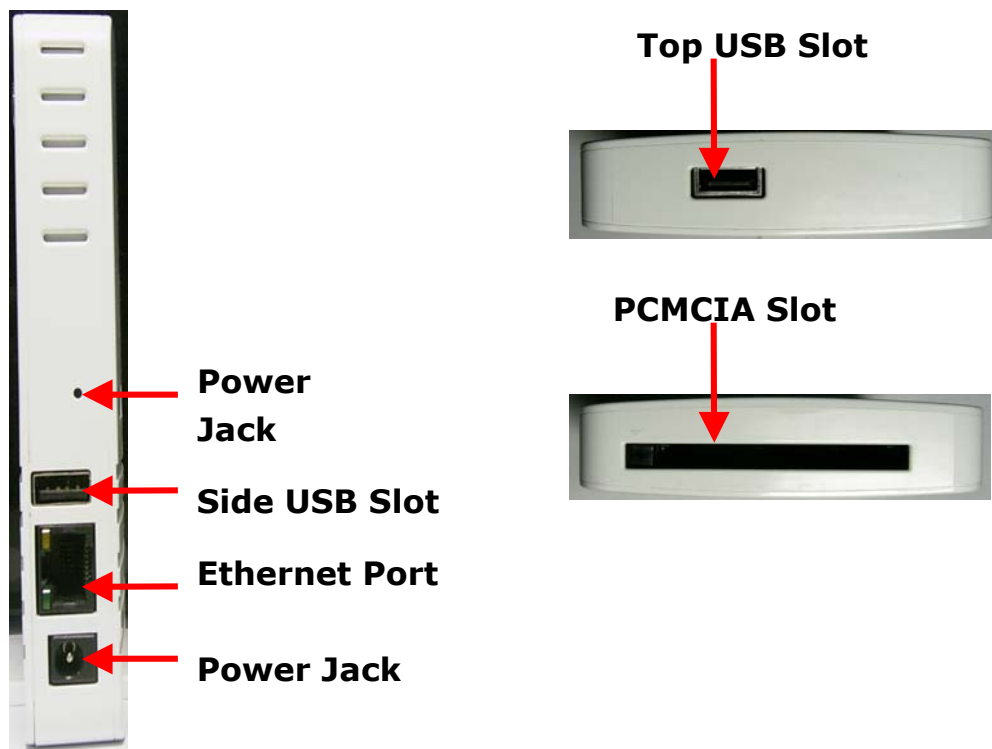
The following figures show the various connectors and status LED indicators on the BPR1000 Mobile Router .



Following table is for WWAN status.

WWAN LED Color	Activity	State
None	None	No Data Card Inserted or No Internet Connection
Green + Red	Always On	System Initialization State
Green	Always On	High Speed Internet Connection
Green	Flash at Same Time	Low Speed Internet Connection
Red	Always On	Card Error

BCM BPR1000-PU/BPR1000-U/MOR600-N



The BPR1000 have two models can be choose, the one is BPR1000-PCMCIA + USB the other one is BPR1000-2USB.

Note: For the BPR1000-2USB model, the two USB slots can not be activated at same time. If you plug in two data cards in Side USB slot and Top USB slot just only data card of Side USB will be activate.

3. Getting Start

Before you Begin , make sure that your compatible 32-bit Data Card with broadband service.(Subject to services and Service terms available from your carries) .

A : Insert Data card to PC card slot

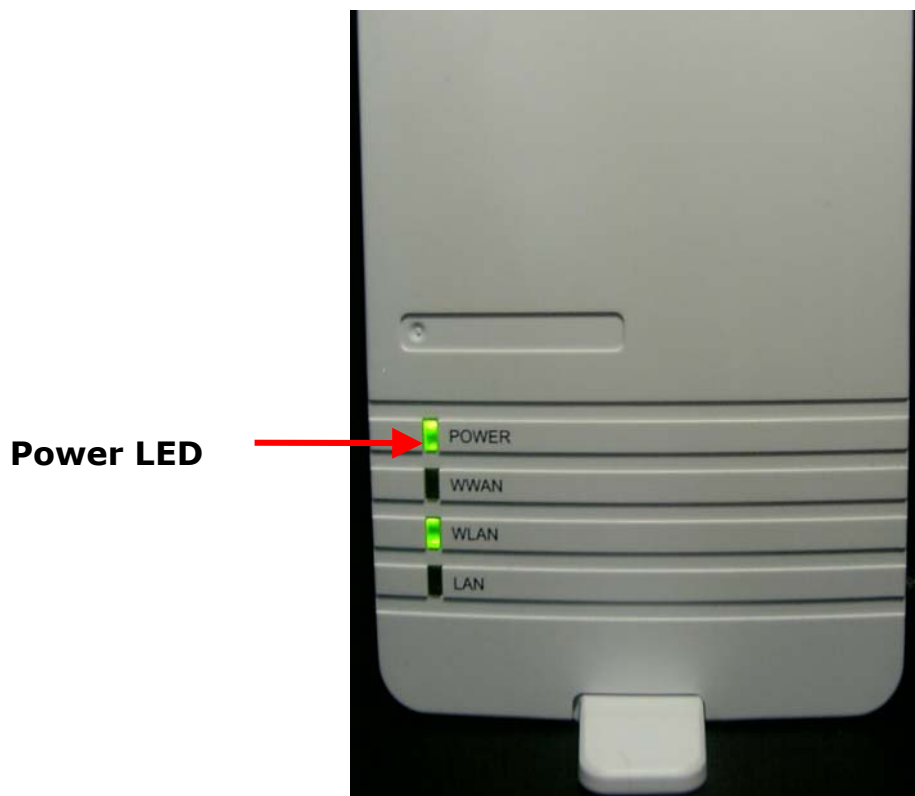


B : Plug in power adapter



BCM BPR1000-PU/BPR1000-U/MOR600-N

When connect the power adapter to back panel power Jack ◦ The power LED Will Turn ON to indicate power has been applied.



C : Check WWAN LED

When Power ON the BPR1000, The BPR1000 Will Auto to detect and initial Your Date Card ◦ Then status LED Will Flash ON and OFF One by one as BPR1000 Performs initialization and Internet connection process ◦ BPR1000 Will Auto Configured properly for your Internet Service Account ◦ It Will take a few minutes ◦

When Complete, the status LED Will illuminate Green ◦ Please refer the below Status LED Activity table for each State ◦

LED Color	Activity	State
None	None	No Data Card Inserted or No Internet Connection
Green + Red	Always On	System Initialization State
Green	Always On	High Speed Internet Connection
Green	Flash at Same Time	Low Speed Internet Connection

BCM BPR1000-PU/BPR1000-U/MOR600-N

Red	Always On	Card Error
-----	-----------	------------

5

V 0.1

4. **Congratulation! You have Connected With Wireless Internet**

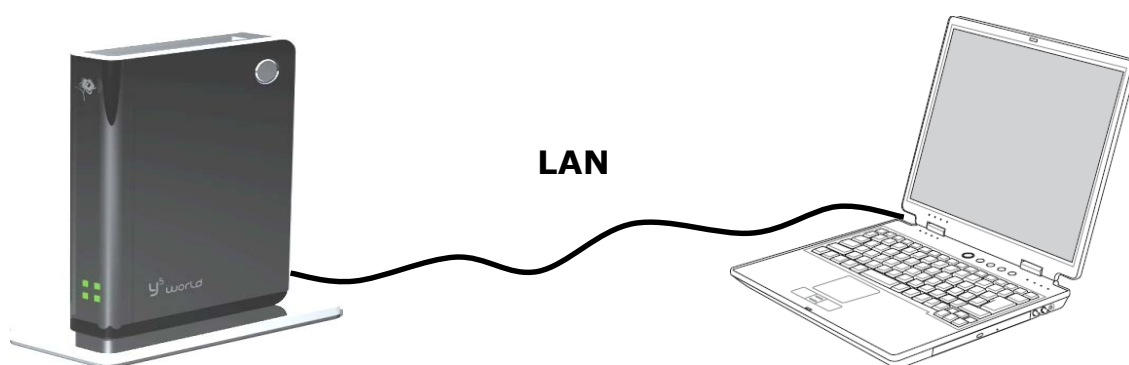
BPR1000 is PnP for your Data card. It Will Auto Configuration and enable the wireless Lan. If you have to any problem or need more advance feature Setting . Please refer the step 5 for more detail.

5. Setting in Web page

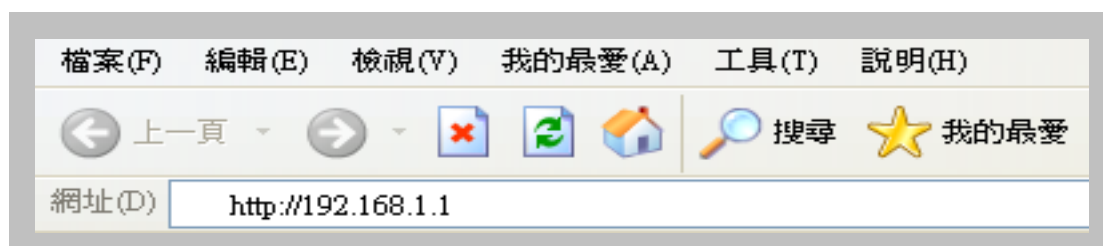
6

V 0.1

A : Connect your PC/Notebook to BPR1000



B : Open your browser Such as IE or Netscape and type Press Enter
<http://192.168.1.1> in address bar.

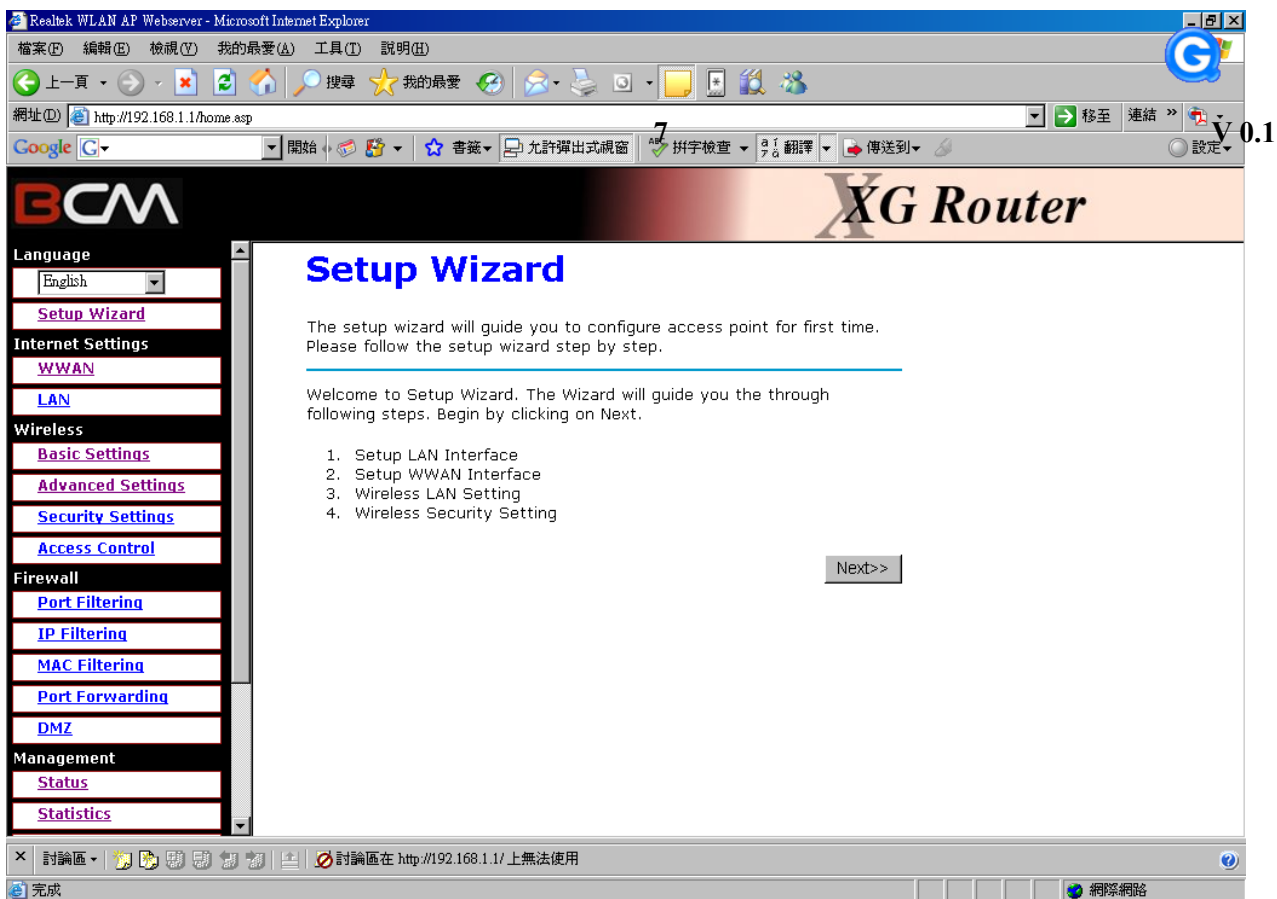


And then you will see the authentication page as below. The default Username / Password is admin / admin.

BCM BPR1000-PU/BPR1000-U/MOR600-N

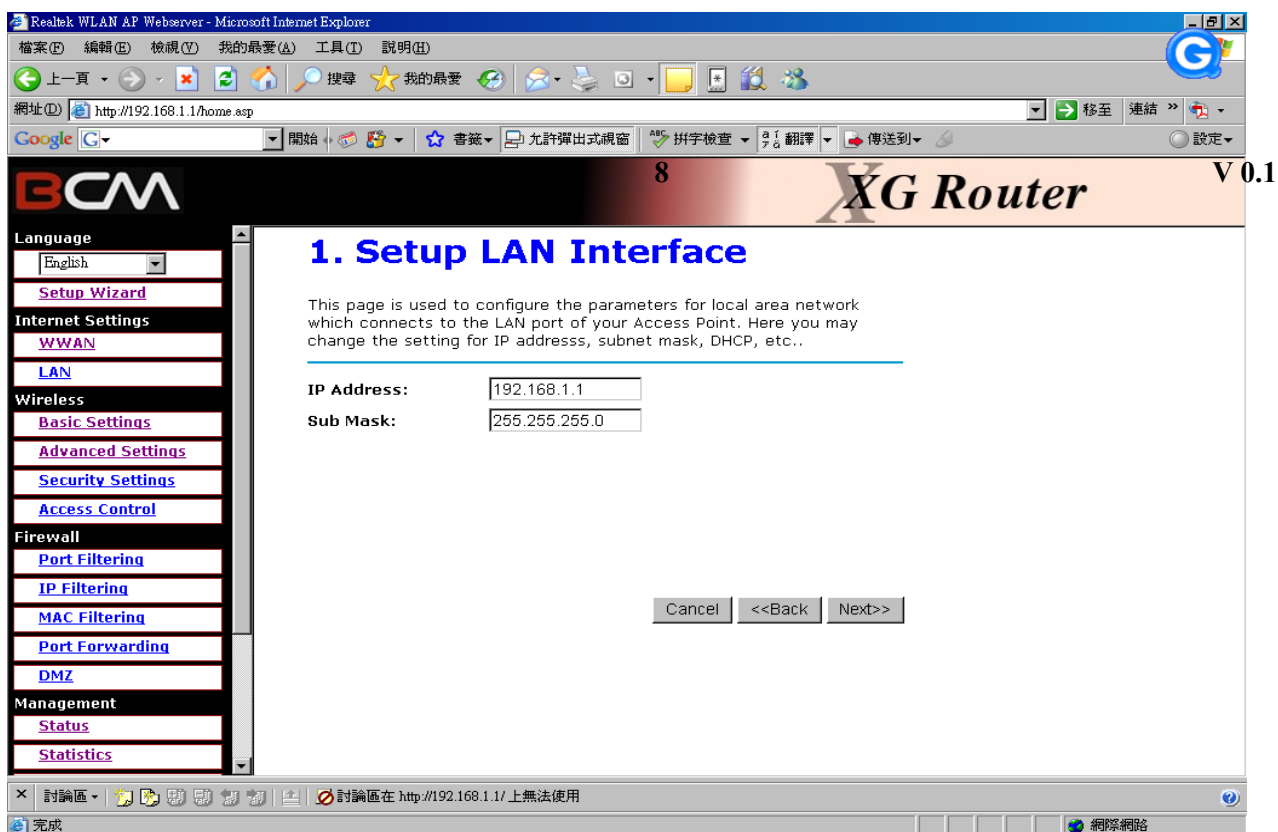


C : Once logged in the following screen is displayed



D : Click Next for LAN Networking Setting

BCM BPR1000-PU/BPR1000-U/MOR600-N



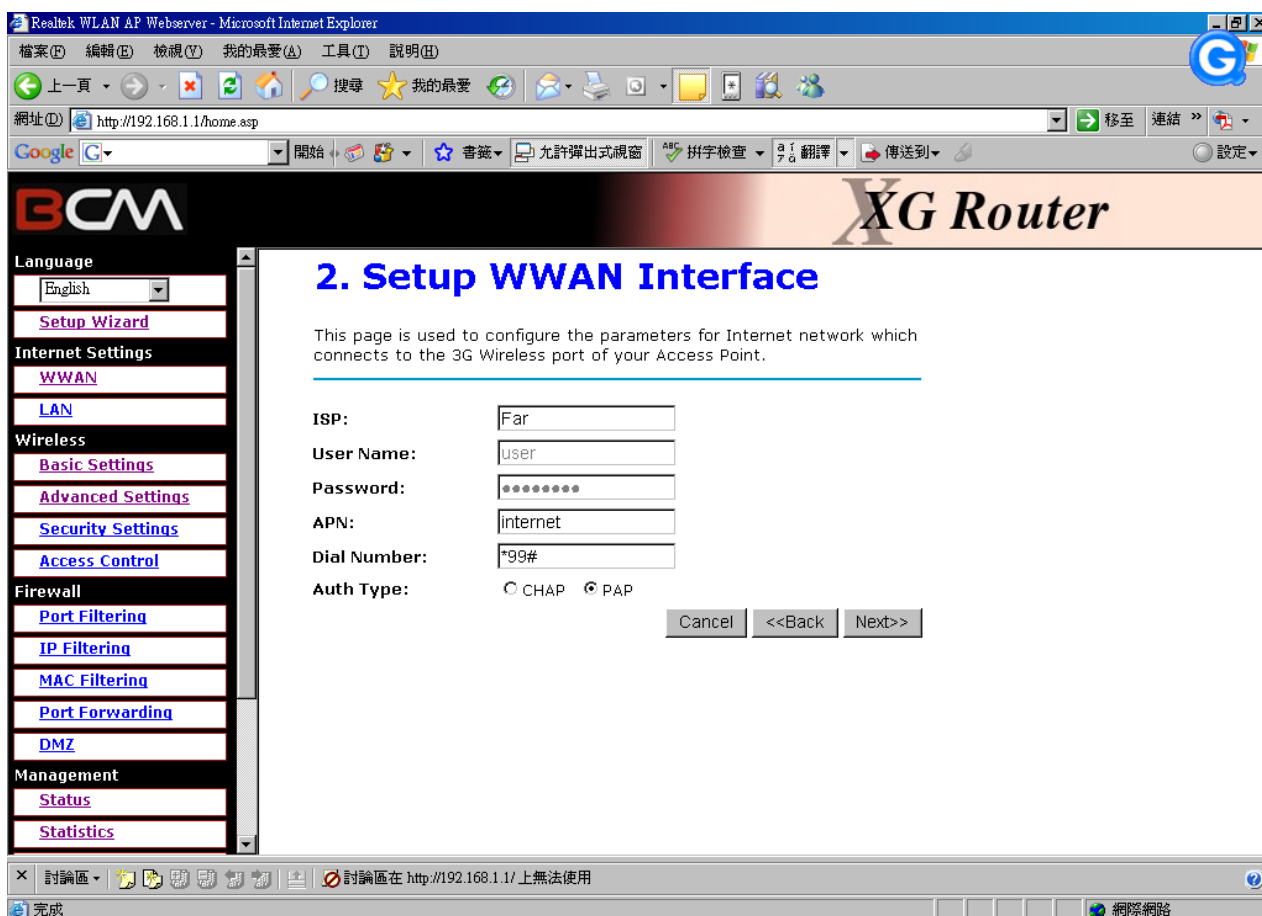
IP Address : The IP Address of the LAN . The default IP address is 192.168.1.1

Sub Mask : The subnet mask of the Lan

Domain Name : Enter Domain Name if need.

E : Click Next for WWAN Networking Setting

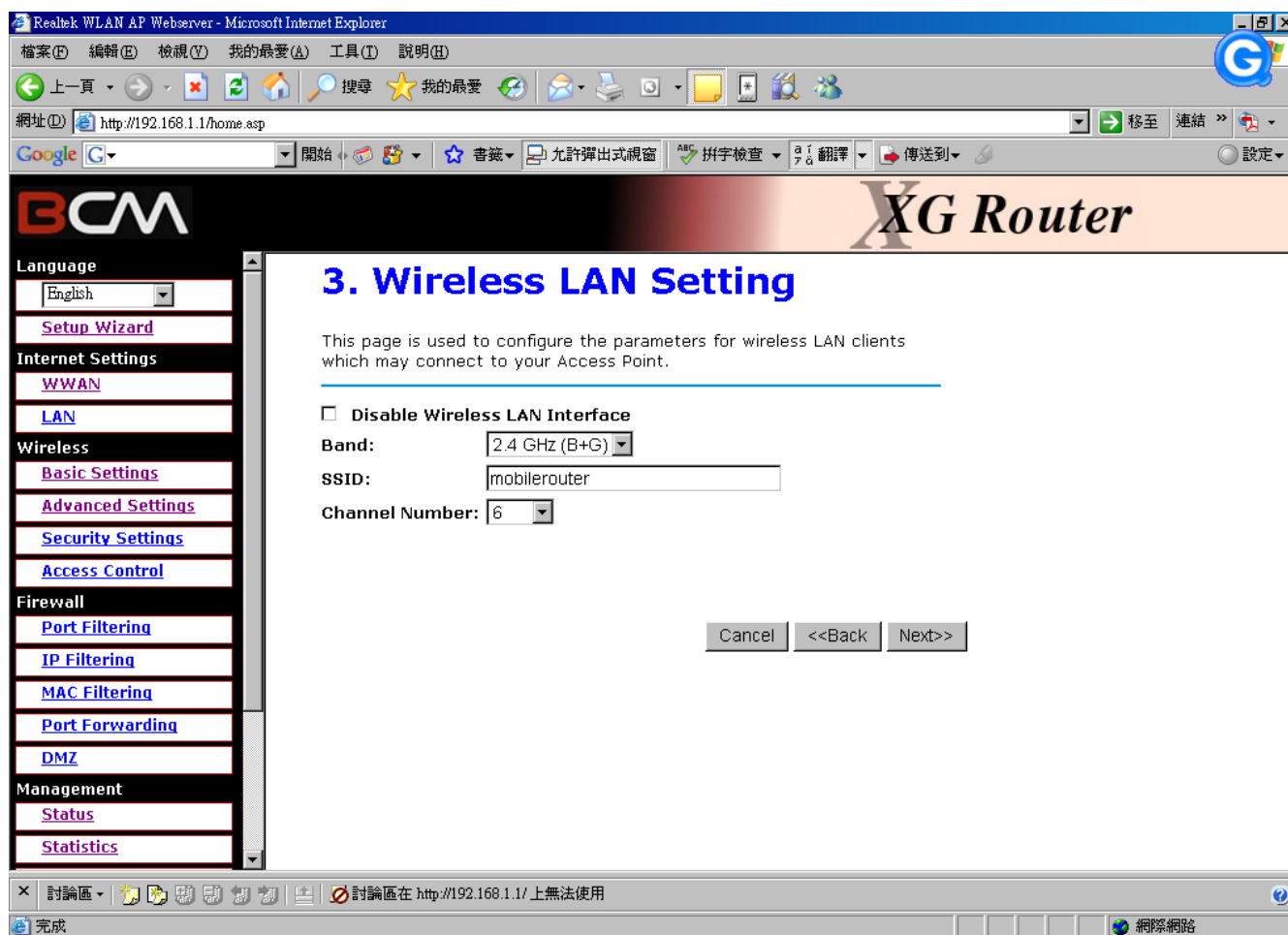
BCM BPR1000-PU/BPR1000-U/MOR600-N



Note : The WWAN fields may not be necessary for your connection. The information on this page will only be used when your service provider requires you to enter User Name and Password to connect to the broadband Network. **Please Refer to your data card documentation or service provider for addition information.**

- ISP** : Specific a Name for your recognition.
- User Name** : Enter the new User Name for your Data card connection.
- Password** : Enter the new Password for your Data card connection.
- APN** : Enter the name of your service Provider Network.
- Dial Number** : The default is *99#. This field should not be altered except when required by your service provider.
- Auth type** : Default is PAP, if you need to input Username / Password you should choose CHAP.

F : Click Next for wireless network setting

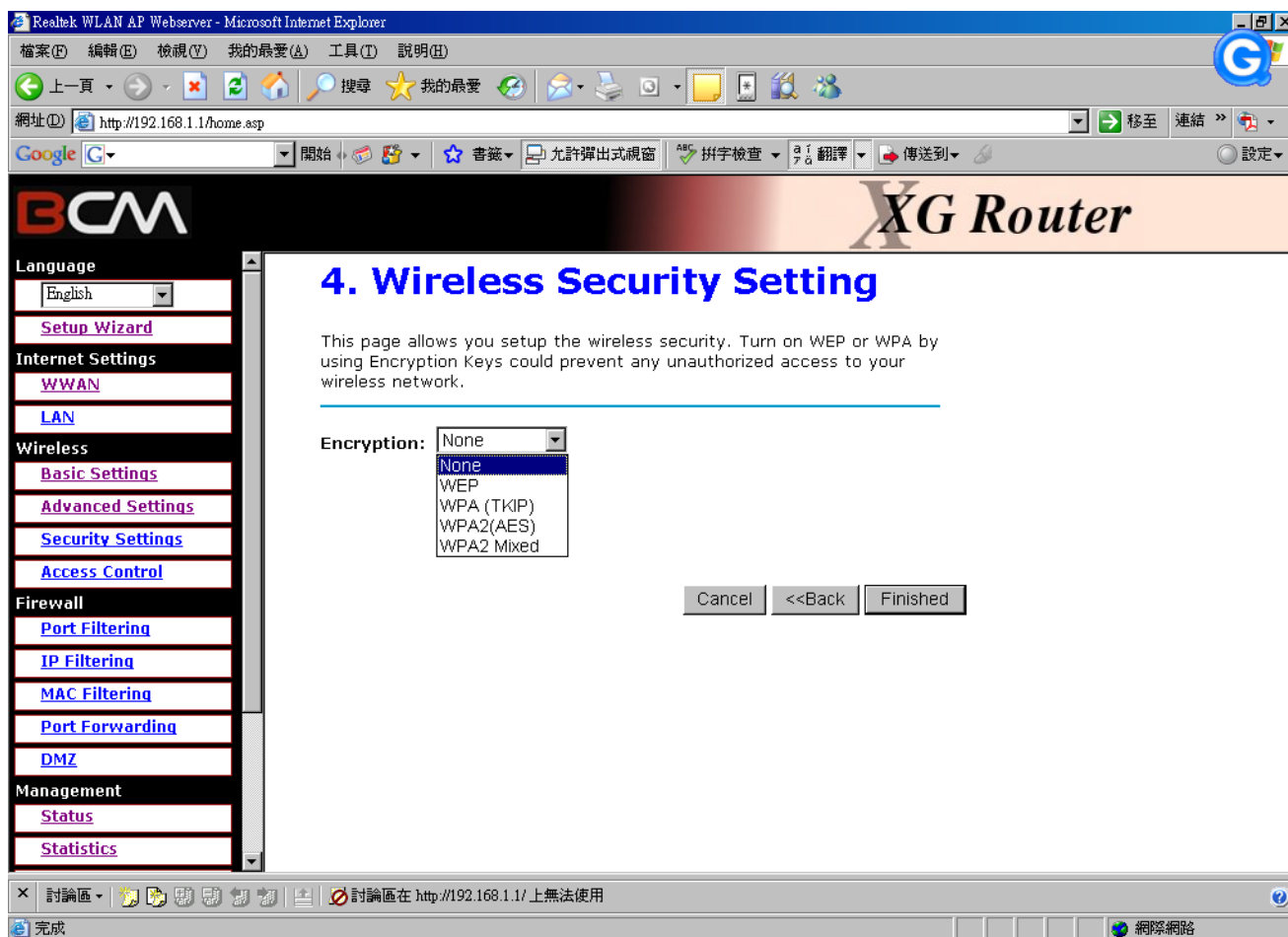


Disable Wireless LAN Interface : Click check button to disable Wireless LAN interface.

Band : You can choose one of 2.4 GHz (B) , 2.4 GHz (G) or 2.4 GHz (B+G). The default is 2.4 GHz (B+G).

SSID : Enter your SSID name in the field provided. SSID names Can contain up to 32 ASCLL characters.

Channel Number : Indicates the channel setting for the Mobile Router. By default the channel is set to 6. The Channel can be changed to fit the channel setting for an existing wireless network or to customize the wireless network.

G : Click Next for Wireless Security setting

- SSID** : Enter your SSID name in the field provided. SSID names Can contain up to 32 ASCLL characters.
- Encryption** : You may select from five levels of encryption to secure your wireless Network : None; WEP; WPA(TKIP); WPA2(AES) or WPA2 Mixed .

H : Click Finished complete your setting.

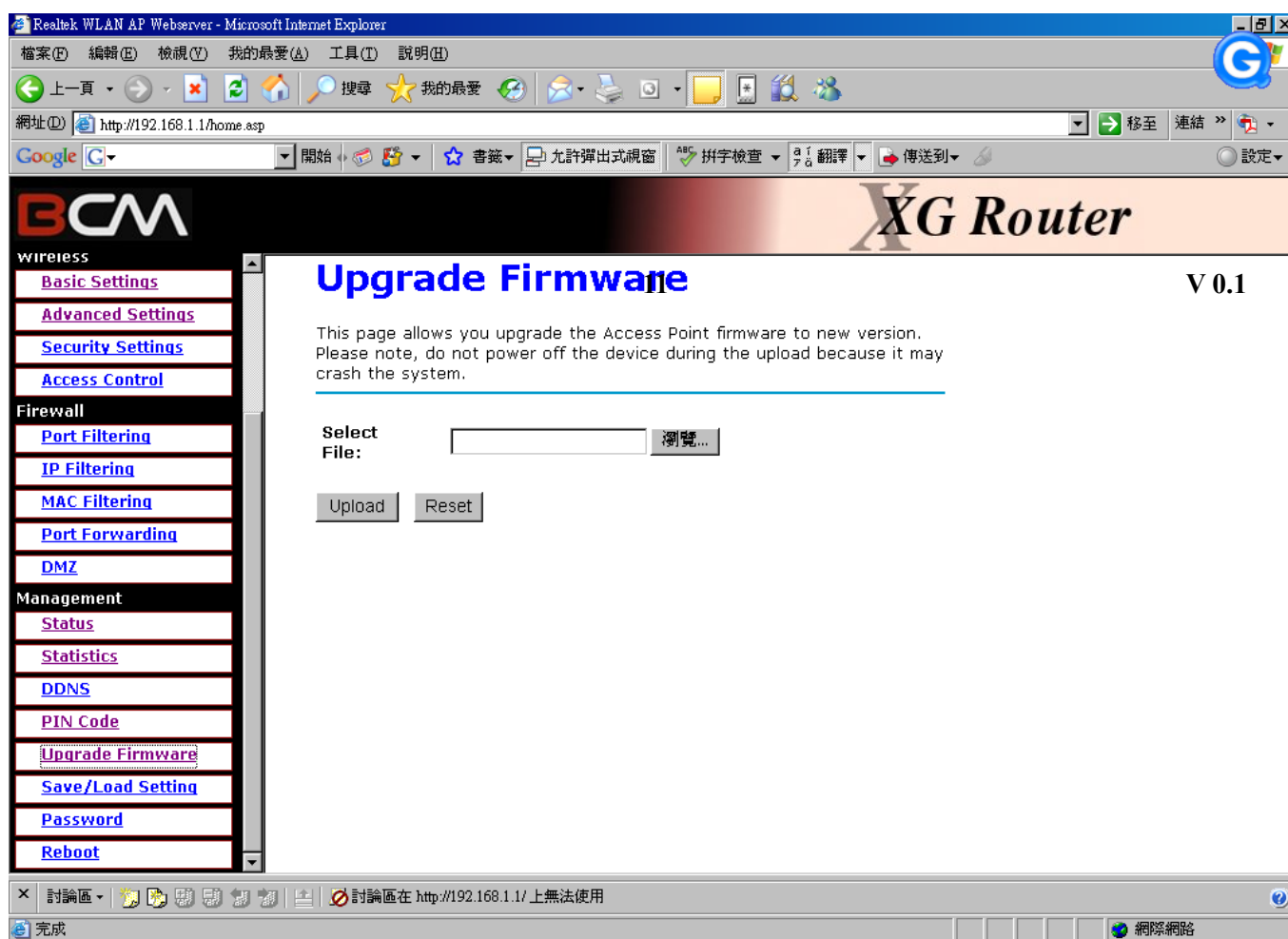
6. Firmware Upgrade

11

V 0.1

Please follow the below step to upgrade your MOR600 firmware.

A: Click Management → Upgrade Firmware item in left menu. You can see the following page.



B: Choose the new firmware in your PC HDD directory. Then Click Upload. BPR1000 will do the firmware upgrade. Once the upgrade was complete. The BPR1000 will auto reboot and system can work again.

BCM BPR1000-PU/BPR1000-U/MOR600-N

產品: Mobile Router

根據交通部低功率管理辦法規定:

第十二條 經型式認證合格之低功率射頻電機，非經許可、公司、商號或使用者均不得擅自變更頻率，加大功率或變更原設計之特性及功能。

第十四條 低功率射頻電機之使用不得影響飛航安全及干擾合法通信；經發現有干擾現象時，應立即停用，並改善至無干擾時方得繼續使用。前項合法通信，指依電信規定作業之無線電信。低功率射頻電機須忍受合法通信或工業、科學及醫療用電波輻射性電機設備之干擾。

You are cautioned that changes or modifications not expressly approved by the party responsible for compliance could void your authority to operate the equipment.

1. This transmitter must not be co-located or operating in conjunction with any other antenna or transmitter.
2. This equipment complies with FCC RF radiation exposure limits set forth for an uncontrolled environment. This equipment should be installed and operated with a minimum distance of 20 centimeters between the radiator and your body.

"The antenna(s) used for this device must be installed to provide a separation distance of at least 20 cm from all persons and must not be co-located or operating in conjunction with any other antenna or transmitter."

This equipment has been tested and found to comply with the limits for a class B digital device, pursuant to part 15 of the FCC Rules. These limits are designed to provide reasonable protection against harmful interference in a residential installation.

This equipment generates, uses and can radiate radio frequency energy and, if not installed and used in accordance with the instructions, may cause harmful interference to radio communications. However, there is no guarantee that interference will not occur in a particular installation. If this equipment does cause harmful interference to radio or television reception, which can be determined by turning the equipment off and on, the user is encouraged to try to correct the interference by one or more of the following measures:

- Reorient or relocate the receiving antenna.
- Increase the separation between the equipment and receiver.
- Connect the equipment into an outlet on a circuit different from that to which the receiver is connected.
- Consult the dealer or an experienced radio/TV technician for help.