

KEYPADS

ACCESS CONTROL KEYPADS FOR INDOOR AND OUTDOOR USE



PRIMARY APPLICATIONS



SHOWN ABOVE

Standard Indoor Keypad (LEFT) and Weather-Resistant, Outdoor Keypad (RIGHT)

DESCRIPTION

BEA's Keypads offer field-proven reliability and cost effective solutions anywhere access control is desired. These keypads are designed for basic access or code control for up to four individual devices. They are ideal for integration into security systems with electromagnetic locks, electric strikes, restricted access elevators or gates and other types of equipment requiring on/off or momentary control inputs.

All programming is completed entirely from the keypad. Non-volatile memory means codes and instructions will remain with power removed.

FEATURES & BENEFITS

- Allows for up to 120 individual user codes
- Codes can be one to six digits in length with repeats
- Input trigger for security or other open circuit contact
- Keypress feedback acknowledgment is indicated by a yellow LED
- 4 independent output and 4 independent timers assignable by code
- 3 additional outputs with accessory board (sold separately)
- Available in standard indoor or weather-resistant outdoor models

RELATED REQUEST TO EXIT PRODUCTS



R2E-100



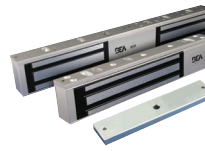
FLY KIT



BR3 LOGIC MODULE



ACTUATORS



MAGLOCKS



ELECTRIC STRIKES

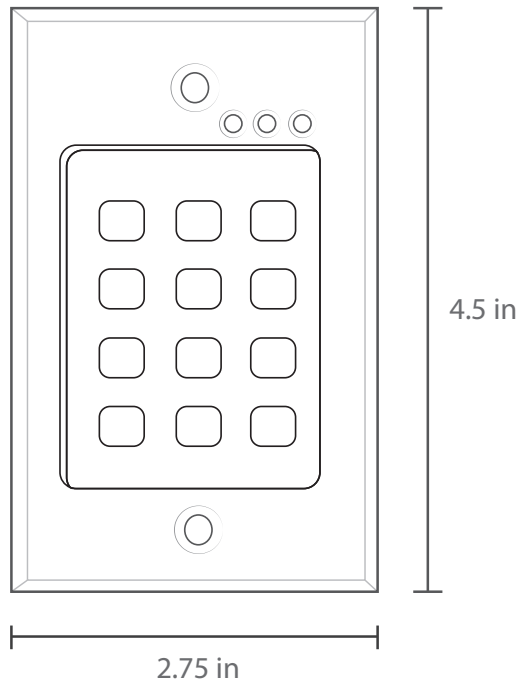


POWER SUPPLIES

TECHNICAL SPECIFICATIONS

Faceplate Dimensions	Single - 2.75 in x 4.5 in x .44 in
Materials	Brushed aluminum faceplate
Current	8 mA @ 12 VDC; 35 mA with relay energized 16 mA @ 24 VDC; 45 mA with relay energized 21 mA @ 12 VDC; 74 mA with relay energized 43 mA @ 24 VDC; 91 mA with relay energized
Time Range (user adjustable)	1 to 90 s
Output	Main relay: 5 A @ 24 VDC with 10 A Surge Outputs 2, 3 & 4 are 50 mA (-V) output
Relay	Form C relay; timed output or toggle (latch)
Voltage	12 to 24 V AC/DC (no jumper required)
Operating Temperature	-20°F to +130°F

DIMENSIONAL DRAWINGS



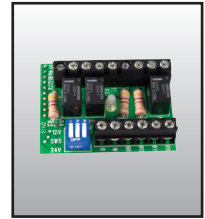
PRODUCT FAMILY



10KEYPAD
STANDARD INDOOR
KEYPAD



10KEYPADWR
WEATHER-RESISTANT,
OUTDOOR KEYPAD



10ARB
ACCESSORY
BOARD

