



SECURITY & ACCESS SOLUTIONS

**PRICE BOOK #7
JANUARY 2019**



INTRO

FEATURED NEW PRODUCTS / PACKAGES... 2
 WARRANTY INFORMATION 3
 TERMS AND CONDITIONS 4-7
 CONTACT 8

SENSORS

BEAMBOX 9
 FALCON FAMILY 9
 FLY KIT 10
 FOCUS FAMILY 10
 IS40 FAMILY 10
 LZR-H100 11
 LZR-I30 / LZR-S600..... 11
 LZR-WIDESCAN 11
 MICROCELL 12
 PHOENIX EX / XL 12
 QUADSCAN I 13
 R2E-100..... 13
 SPARROW 13
 SUPERSCAN-T I / SUPERSCAN-T II 14

ELECTROMAGNETIC LOCKS

UL LISTED..... 14
 UL LISTED DELAYED EGRESS 15
 UL LISTED GATELOCKS..... 15
 CABINET LOCK 15
 ACCESSORIES 16

ELECTRIC STRIKES

CYLINDRICAL UNIVERSAL 17
 RIM EXIT 17

SECURITY BUTTONS

ACCESS CONTROL PUSH BUTTON 17
 PNEUMATIC PUSH BUTTON..... 17-18
 PIEZO BUTTON 18

KNOWING ACT DEVICES

LPR-36 18-19
 MAGIC SWITCH FAMILY 19-20
 PANTHER FAMILY 21
 ROUND FAMILY..... 22
 SQUARE FAMILY 23-24
 VESTIBULE..... 25
 JAMB 25
 BOLLARDS..... 26
 KEYSWITCHES 26
 UNIVERSAL KEYPADS..... 27

WIRELESS

900 MHZ TRANSMITTERS & RECEIVER 27
 433 MHZ TRANSMITTERS & RECEIVERS.... 28
 300 MHZ TRANSMITTERS & RECEIVER 28

LOGIC MODULES

BR2-900..... 29
 BR3-X 29
 MC25 29
 LE21 29
 LO21 29

LOOP DETECTORS

MATRIX FAMILY 30

PACKAGES

ACCESS CONTROL 30
 LOW ENERGY REACTIVATION 31
 SECURITY SPECIFIC PUSH PLATE..... 31
 RESTROOM KIT 32
 EMERGENCY ADD-ON KIT..... 32

ADDITIONAL PRODUCTS

JAMB CAM..... 32
 LED SIGNAL LIGHTS 33
 POWER SUPPLIES & TRANSFORMERS 33
 ACCESSORIES 34



BR3-X
3-relay advanced logic
module
page 28



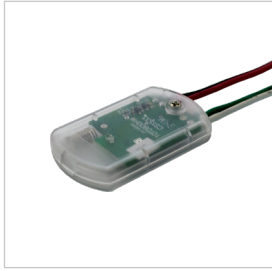
BR2-900
2-relay logic module
with built-in 900 MHz
wireless technology
page 28



MOUNTING BOX EBA
4.75 inch square
surface mount box with
easy battery access
page 22



**SLIM-LINE UNIVERSAL
KEYPAD**
Rated for indoor /
outdoor use
page 26



**900 MHZ TOUCHLESS
RETROFIT TRANSMITTER**
Two-to-four wire
upgrade for touchless
actuators
page 26

FEATURED
NEW PACKAGES



RESTROOM KIT
page 31



EMERGENCY ADD-ON KIT
page 31



ACCESS CONTROL PACKAGES
page 29



PUSH PLATE PACKAGE
455-900
page 30



PUSH PLATE PACKAGE
6R-900
page 30



PUSH PLATE PACKAGE
4755-900
page 30

GENERAL

BEA warrants that all sensor products sold will be free from defects in workmanship and materials during the warranty period. The warranty period shall extend for thirty-six (36) months from the date of sale on Sensors. Electric Strikes have a 5 year warranty. Magnetic locks and activation push plates carry a lifetime warranty. Key cylinders are 1 year.

Within this warranty period, BEA, at its sole option, will replace (FOB Pittsburgh) the goods in question at no charge subject to provisions as described below.

The warranty period for a replacement will continue for the remainder of the original 36-month period. For example, if a 14-month old unit is returned under warranty, its replacement will still be under warranty for the remaining 22 months from the date of the original sale.

PROCEDURE

All warranty returns will be processed through the Pittsburgh location. Prior to returning items for warranty purposes customers are encouraged to contact BEA, Inc. by fax, phone, or the email address listed below. To speed up the RMA process, please be prepared to answer the following questions:

- Company Name & Address or Account # (AR#)
- Serial number
- Item name

Units returned to BEA should be properly packaged and shipped freight prepaid to:

BEA, Inc.
100 Enterprise Drive
Pittsburgh, PA 15275-1213

BEA reserves the right to refuse packages damaged due to improper packing.

A packing list should be included with each package and contain the following information:

- Customer Name
- Address (where repair/replacement should be shipped)
- Customer reference such as P.O. #, Job name, etc.
- Date of Shipment
- RMA # if provided by BEA
- List of Units Returned
- Description of Problem

If you purchase BEA products from an authorized third party, please submit all warranty claims through that party.

OUT OF WARRANTY

Items returned with an expired warranty will not be repaired or replaced.

Note: If an item is determined to be out-of-warranty, it will be discarded without notice.

To help avoid returning out-of-warranty items, customers are encouraged to contact the After Sales Service Department by fax, phone, or the email address listed below.

To determine status, BEA will require:

- Company Name & Address or Account #
- Serial number
- Item name

The required information is generally listed on the circuit board inside the product housing. If the product does not have a serial number on the circuit board, use the number from the product housing.

Note: Products that have no serial number label will be treated as out-of-warranty.

BEA will confirm the warranty status when the product is returned and may update the status based on the visual inspection of the actual item.

LIMITATIONS

This warranty is void if a defect is caused by error, negligence or inappropriate use by the customer or third party, including but not limited to:

- Damage caused by improper electrical connections
- Damage caused by defects in other manufacturer's equipment
- Damage caused by fire, lightening, vandalism, acts of God
- Damage caused by water (weather protection accessories are available)
- Rebuilt, re-manufactured or repaired units by the customer or third party

The warranty is also void on any unit that has been tampered with, modified or otherwise taken apart by non-BEA personnel.

Batteries are not covered under the BEA Warranty Policy.

If a customer account has any outstanding invoices over 90 days, our 2-week guaranteed turnaround will not apply.

If you have any questions about our warranty program, please contact our Customer Service Sales Team at:

Phone: 800.523.2462
Fax : 888.523.2463
customerservice@BEAinc.com

All sales are made by BEA only upon the following terms, conditions and submission of a written purchase order. Any additional or different terms or conditions set forth in any purchase order or similar communication are hereby rejected and shall not be binding or effective unless expressly agreed to in writing by an authorized representative of BEA. Any purchase order executed after the effective date of this price book provides acceptance to our terms and conditions.

1. PRICES

- A. All prices are subject to change without notice and are not guaranteed. All orders will be shipped at prices in effect at time of shipment.
- B. Prices stated do not include any sales, use or excise tax or any other tax, duty or charge which is now in effect or may be hereafter imposed by any Federal, State or other authority. All such taxes, duties or other charges shall be paid by customer unless the customer shall provide to us an exemption certificate acceptable to the appropriate authorities.

2. FREIGHT

- A. All goods are invoiced FOB shipping point and responsibility will not be accepted for damages or pilferage. These claims should be submitted with proper documents to the delivering carrier.
- B. BEA's standard policy is to pay ground freight charges on all orders \$750 net price or above except for Bollards. Distributor must be current on their account to receive prepaid freight.
- C. All shipments billed to a distributor's UPS shipping account shall not be charged a handling fee.
- D. Product is shipped by the carrier of our choice. If higher freight charges are incurred from customers specifying a carrier of route or their choice the additional cost will be added to that customer's invoice.

3. TERMS OF PAYMENT

Payments are due in net 30 days from date of invoice.

4. ORDERS AND ACKNOWLEDGMENTS

- A. The Company reserves the right to refuse orders which may be submitted without pricing or attached quote and all required information. Exception is made if BEA has on file the customer's written approval allowing BEA to process orders and refrain from short paying invoices because of any pricing discrepancies.
- B. Acknowledgments are copies of your orders and should be checked by you. If something does not agree with your understanding, BEA should be notified at once.
- C. If our customer shall become overdue on its account or otherwise defaults in any payment to us or if its financial condition shall at any time seem to us otherwise inadequate to warrant further shipment on an open account basis, we shall have the right, without liability, to refuse to accept any or all orders, to cancel any and all orders, to delay shipments to the customer, or to require advance payment before accepting or shipping any orders. All orders and all shipments are subject to approval by our Credit Department.
- D. ALL SALES ARE FINAL.

5. ORDER CHANGES

Any changes made to special order items that occur 3 days or more after the order entry date will carry a longer lead time and may be charged a handling fee. The customer will be given the option of having the entire order shipped at a later date or the changed items shipped freight collect with the same discount as the original order.

6. MINIMUM ORDERS

No invoice will be priced for less than \$50.00 net plus shipping charges.

7. SHIPMENTS

- A. Upon delivery of shipments to the carrier, title to, and the risk of loss or damage in transit for, such shipments passes to our customer.
- B. Orders will be filled to the extent of our stock on hand and any balance forwarded as soon as possible.
- C. Shipping schedules are estimates only which cannot be guaranteed because of the nature of our products and material, labor and manufacturing conditions beyond our reasonable control. Under no circumstances shall we be responsible for any inability or delay in meeting shipping schedules or for any loss or damage (whether direct or consequential) resulting there from.
- D. All goods are packed in quantities which our experience has shown to be the most convenient and suitable.

8. CLAIMS

Claims on prices must be submitted within thirty days from date of invoice. Price claims must be submitted in writing to: BEA Inc. Attn: security@BEAinc.com

9. RETURNED GOODS

No products may be returned without our prior written authorization. If a product return is authorized, our Customer Service representative will provide you with a Return Merchandise Authorization form (RMA) for the returnable products. The RMA form must accompany the shipment of the returned products to us. If products were defective or were shipped in error a credit at the invoice price will be issued or replacement products will be shipped only after a thorough inspection of the returned products has been made by our representative and such inspection confirms that the products were defective or shipped in error. Please return defective products in their original packaging. We have no obligation to agree to the return of non-defective products properly shipped. If, in our discretion, we agree to the return of non-defective, properly shipped products: (a) you will be issued a credit based on the price in effect when the products are returned or at the invoice price, whichever is lower, less the cost of return freight; (b) after 30 days a restocking charge of 25% may be applied.

10. CANCELLATIONS

Cancellations will not be accepted on goods that are not regular stock (special order), which are in the process of being manufactured, or ready for shipment.

11. MATERIAL AND FINISHES

- A. Specifications, weights, dimensions and descriptions are actual or careful estimates but are not guaranteed and are subject to change without notice.
- B. We reserve the right to furnish materially equivalent substitutes for materials which cannot be obtained in sufficient quantities due to existing shortages.
- C. Although we apply the finest protective coatings available to the plated surface of our products, brass, bronze, and other antique finishes have their limitations, and in time the protective lacquer may deteriorate from exposure to weather, perspiration, extremes of climate, frequency of use or other factors. Tarnishing or excessive wear of these finishes is, therefore, not a defect, but a normal process which is unavoidable. Therefore, unless a specific product warranty includes an extended warranty, the finish will not be repaired or replaced under our warranty for tarnishing or wear of finishes.

12. LIMITED WARRANTY

We issue different warranties for different products so that the warranty will match the performance of each product. We grant to our customers the same warranty granted to the ultimate consumer. The specific details of the warranty relating to each of the products to which these terms and conditions apply will be found with the product and in our product catalog. THIS WARRANTY IS IN LIEU OF ALL OTHER WARRANTIES, EXPRESS AND IMPLIED. OUR LIABILITY TO OUR CUSTOMER IS LIMITED TO THAT STATED IN EACH SUCH WARRANTY AND UNDER NO CIRCUMSTANCES WILL WE BE LIABLE TO OUR CUSTOMERS FOR INCIDENTAL OR CONSEQUENTIAL DAMAGES.

For more information concerning any specific warranty contact us at:

Customer Service - BEA, Inc.
100 Enterprise Drive
Pittsburgh, PA 15275-1213
800.523.2462

13. PATENT INDEMNITY

We agree to defend any suit or proceeding brought against our customer so far as based on a claim that our products, or any part thereof, made solely to our specifications and furnished to our customer constitute an infringement of any U.S. patent, if notified promptly in writing and given authority, information and assistance at our expense for the defense of same, and we shall pay all damages and costs awarded therein, against our customer, in case our products, or any part thereof is in such suit held to constitute infringement and their use is enjoined, we will, at our expense and discretion, either procure for our customer the right to continue using the products or replace same with non-infringing products, or modify them so they become non-infringing, or remove such products and refund the purchase price (less depreciation, prorated from the purchase date). The foregoing states our entire liability for patent infringement by our products or any part hereof.

14. DEFAULT

If our customer is in default under any order with us or any of our affiliated divisions or companies, or if we at any time shall not be satisfied with our customer's financial conditions or responsibility, we shall have the right, without prejudice to any other legal remedy, of suspending deliveries until such default or condition is remedied.

15. ASSIGNMENT

Our customer shall not assign its orders nor any of its rights or obligations there under without our prior written consent.

16. APPLICABLE LAW

These Terms and Conditions of Sale and any subsequent sales agreements between BEA and the customer shall be construed in accordance with the laws of the Commonwealth of Pennsylvania.

17. WAIVER AND MODIFICATION

No waiver or modification of any of the terms and conditions contained herein shall be effective unless such waiver or modification is in writing and signed by an authorized representative at our offices in Pittsburgh, Pennsylvania.

UNILATERAL MINIMUM ADVERTISED PRICE (UMAP)

In order to maintain and further enhance BEA, Inc's brand name, we are implementing a unilateral policy announcing a minimum advertised price standards for products marketed and sold in the United States effective January 1, 2019.

The Unilateral Minimum Advertised Price (UMAP) is BEA's suggested advertised price as set forth with our current trade price list. Please contact your BEA sales representative for the current UMAP price list. BEA distributors, dealers, retailers and business individuals selling into the United States shall not advertise below BEA's UMAP. Any advertising that contains a price lower than the UMAP will be in violation of this policy. This includes but is not limited to catalog and e-commerce internet retailers using BEA's distribution channels. This includes a price that is displayed on a "checkout" or "shopping cart" page.

Under the policy, BEA reserves the right to examine any product being advertised for compliance with the UMAP policy. Any seller that violates the policy will have 48 hours from notice, in writing of the violation, to correct the advertised pricing for the product(s) not in compliance. Continued non-compliance or violation of the policy will result in suspension of all shipments of such products to the seller for a period of three (3) months. Any subsequent violation of the policy by the same seller will result in BEA discontinuing all sales and shipment of BEA products to the seller and the seller shall be prohibited from further use of BEA's trademarks.

BEA's distribution partners shall provide a copy of the policy to all their dealers to provide notice that the policy will apply to those dealers. Upon receipt of the notice from BEA that a dealer has violated the policy, the distribution partner shall not be authorized to supply the specified products to such dealer for the specified period. This policy applies to all related terms, such as, but not limited to discounts or percentages off, free product, rebates and discount structures for existing or future purchases. Quantity and bundling offers are permitted as long as the advertised price does not violate the UMAP policy.

The UMAP policy does not cover point-of-sale signs, stickers, hangtags, or bar codes and similar markings on products or product packaging which merely states the retail prices at which BEA products may be purchased. The UMAP Policy will not apply to products being discounted, temporarily discounted or preapproved specials after thirty (30) days from the date of the BEA notice to the distributors and dealers.

The UMAP Policy does not apply in any way to your actual selling prices, the retail sales prices for any and all BEA products remain wholly within your discretion. BEA does not seek, nor will it accept, any agreement or assent from you respecting this policy, either now or at any future time. This policy is being established by BEA unilaterally and therefore is not subject to negotiation. BEA reserves the right at any time and for any reason to modify this policy, to establish new or different policies to discontinue any or all such policies. This Policy shall remain in effect until modified or terminated by BEA. BEA believes that its policy is clear and unambiguous. Should you have any questions regarding the policy, please direct them to BEA USA at 800-523-2462.

Order Details – Send Orders to
BEA, Inc.
100 Enterprise Drive
Pittsburgh, PA 15275-1213

Orders can be emailed to: orders@BEAinc.com
Orders can be faxed to: 888.523.2462

CUSTOMER SERVICE

Phone: 800.523.2462
Email: orders@BEAinc.com

TECHNICAL SUPPORT

Phone: 800.407.4545
Email: tech_services@BEAinc.com

SALES SUPPORT

Phone: 800.523.2462
Email: orders@BEAinc.com

WEBSITE

BEA's website www.BEAinc.com is the place to go for all your product information needs. Easy to navigate menus allow simple and fast access to the latest on new and existing products. Catalog information and instruction manuals are all accessible and updated on our website.

NON-CATALOGED ITEMS

Some items are available in additional finishes. Contact Security Inside Sales for pricing and delivery options.

BEAMBOX

- Nine pre-configured settings including presence only and motion + presence detection
- Three rows of five infrared spots
- Preset patterns include presence only and motion + presence configurations
- Adjustable manually or with the BEA Remote Control
- Power: 12 – 24 VAC / VDC



Part Number	Description	Case Quantity	List Price
10BEAMBOX	Uses a 3 x 5 matrix of infrared spots, 15 total Monitoring capable	-	\$672

COLIBRI

- Variable sensitivity adjustment for indoor and outdoor environments
- Microwave motion sensor with rotational angle adjustment
- Compact size provides flexibility in mounting



Part Number	Description	Case Quantity	List Price
10COLIBRI	Unidirectional motion sensor for off-door applications	-	\$252

FALCON FAMILY

- Motion sensor with the ability to discriminate between vehicular and pedestrian traffic
- Three directional detection options and able to ignore parallel traffic
- Economical alternative to a loop detector
- Adjustable manually or with the BEA Remote Control
- 33 ft of pre-wired cable (1 Relay Output)
- Power: 12 – 24 VAC / VDC



Part Number	Description	Case Quantity	List Price
10FALCON	11.5 ft – 23 ft mounting height	6	\$469
10FALCONXL	Industrial low mount motion sensor 6.5 ft – 11.5 ft mounting height	6	\$469
10FALCONW	Falcon Wide - Industrial microwave motion sensor with extended width pattern 11.5 ft – 21 ft mounting height	6	\$489
10FALCONEX100	Falcon EX - Industrial motion sensor encased in an explosion-proof/flame-proof housing. Includes 100 ft cable 11.5 ft – 23 ft mounting height	-	\$1,499
10FALCONEXXL100	Falcon EX XL - Industrial motion sensor encased in an explosion-proof/flame-proof housing. Includes 100 ft cable 6.5 ft – 11.5 ft mounting height	-	\$1,499
10FALCONEXW100	Falcon EX Wide - Industrial motion sensor with extended width pattern encased in an explosion-proof / flame-proof housing. Includes 100 ft cable 11.5 ft – 21 ft mounting height	-	\$1,499
20.5365	ACCESSORY - cable for Falcon, 100 ft	-	\$84
35.1240	ACCESSORY - cable for Falcon, 33 ft	-	\$50



FLY KIT

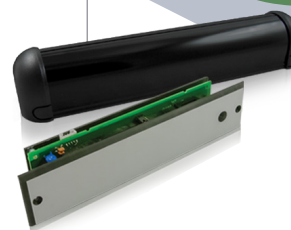
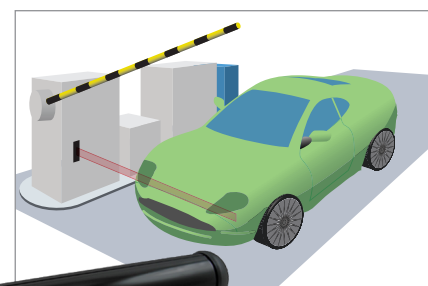
- Compact, cost effective, passive infrared (PIR) sensor
- Accurate, field adjustable detection zone
- Multiple mounting options (surface or recessed ceiling)
- 0° to 180° mounting angle
- Power: 12 – 24 VAC / VDC



Part Number	Description	Case Quantity	List Price
10FLYKITB	FLY Kit - black (1) 10FLYBLK PIR FLY sensor (1) 10FSABLK surface adapter (1) 10FCABLK ceiling adapter	24	\$104
10FLYKITBERT	FLY Kit - black with extended relay hold time (1) 10FLYBLKERT PIR FLY sensor (1) 10FSABLK surface adapter (1) 10FCABLK ceiling adapter	24	\$104

FOCUS FAMILY

- Multi-purpose Infrared sensor for use in applications such as dock status alerts, pinch-point safety detection, drive through windows and sidelight protection
- Adjustable detection range of 2 – 8 ft
- Power: 12 – 24 VAC / VDC

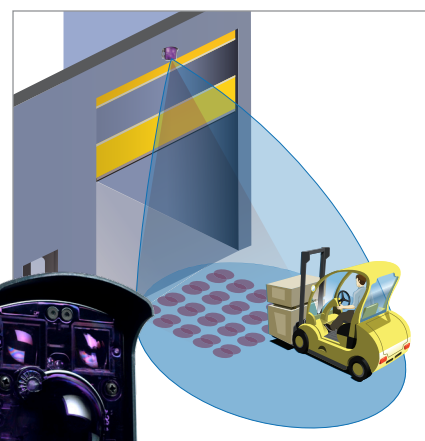


Part Number	Description	Case Quantity	List Price
10FOCUS	Surface mounted, distance measuring active infrared presence sensor	12	\$268
10FOCUS2	Recess-mounted active infrared presence sensor	24	\$268

IS40 FAMILY

- IS40 / XL combines microwave motion detection with infrared presence detection
- IS40P provides presence detection in a NEMA 4 rated enclosure
- IS40 / XL can detect both moving and motionless objects (with learn time)
- 33 ft of pre-wired cable (2 Relay Outputs)
- Adjustable manually or with the BEA Remote Control
- Power: 12 – 24 VAC / VDC

NEMA4
RATED ENCLOSURE



Part Number	Description	Case Quantity	List Price
10IS40	Dual technology industrial sensor utilizing microwave motion and active infrared presence detection Mounting Height: 11.5 ft – 16 ft	6	\$574
10IS40XL	Dual technology industrial sensor utilizing microwave motion and active infrared presence detection Mounting Height: 6.5 ft – 11.5 ft	6	\$574
10IS40P	Active infrared presence sensor offering 40 unique spots of detection Mounting Height: 8 ft – 16 ft	6	\$470
35.1195	ACCESSORY - cable for IS40 and IS40P, 33 ft	-	\$42

LZR®-H100

- Ideal for applications where cutting ground for loops is prohibited or impossible
- Two relays allow for activation via motion or presence
- Ability to detect vehicle trajectory during approach and depart
- Maximum detection field of 9.6 m × 9.6 m (32 ft × 32 ft)

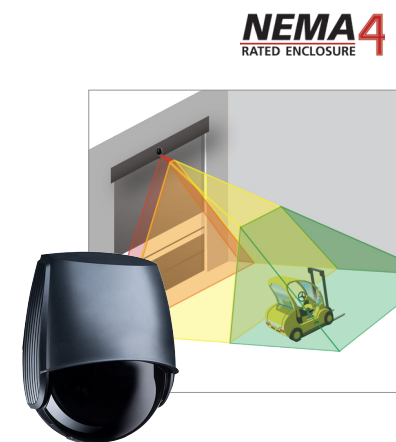
Part Number	Description	Case Quantity	List Price
10LZRH100	NEW - LASER scanner designed for gate and barrier applications - Horizontal mount	6	\$1,568



LZR®-WIDESCAN

- Ideal for replacing costly / labor-intensive induction loop and pull cord solutions
- Can be installed left or center mount
- Promotes energy savings by reducing false detections / unnecessary door cycling helping to regulate HVAC
- Two visible LASER alignment spots ensure accurate pattern placement

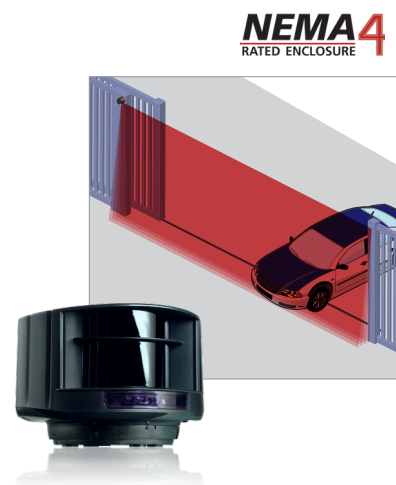
Part Number	Description	Case Quantity	List Price
10LZRWIDESCAN	NEW - LASER scanner for motion, safety and presence detection. Can be mounted left or center	-	\$1,500
10.1311	ACCESSORY - LZR-WIDESCAN Adapter Plate Kit	-	\$21



LZR®-I30 / LZR®-S600

- Provides four LASER-based curtains of presence detection
- Three reference LED spots assist in set up to ensure precise alignment of sensor field
- 33 ft of pre-wired cable (2 Relay Outputs)
- Adjustable with the BEA Remote Control (required)
- Power: 12 – 35 VDC

Part Number	Description	Case Quantity	List Price
10LZRI30	LASER scanner for industrial automation; up to 30 ft × 30 ft coverage	6	\$1570
10LZRS600	LASER scanner for building automation and perimeter protection; up to 82 ft × 82 ft coverage	6	\$1,764
35.1242	ACCESSORY - 10-conductor heavy duty cable for 10LZRI30 and 10LZRS600, 33 ft harness	-	\$43
10LBA	ACCESSORY - LZR bracket for ceiling, horizontal or pole mounting	-	\$43



MICROCELL

- Detection Range: 3 ft – 15 ft
- Power: 12 – 24 VAC / VDC

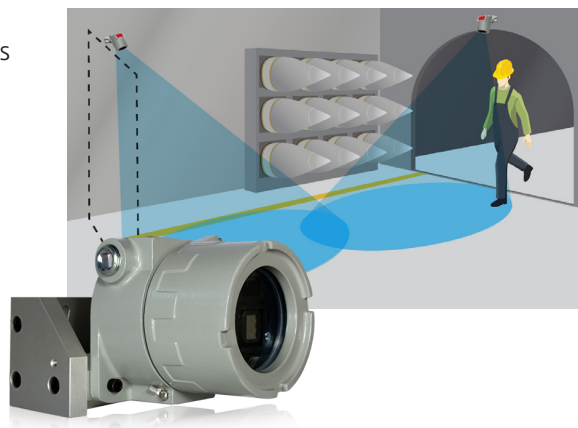
Part Number	Description	Case Quantity	List Price
10MICROCELL1S	Single beam kit - (1) emitter, (1) receiver, (1) 10MICRO-CONTROL control box with 15ft Cable NEMA 4 rated	24	\$154
10MICROCELL1SL	Single safety beam kit - includes control box and (1) emitter / (1) receiver with 30 ft of cable	24	\$167
10MICROCELL1D	Double beam kit - (2) emitter, (2) receiver, (1) 10MICROCONTROL control box with 15ft Cable NEMA 4 rated	24	\$209
10MICROCELL1DL	Double safety beam kit - includes control box and (2) emitters / (2) receivers with 30 ft of cable	24	\$226
10MICROCONTROL	Microcell control box	-	\$93



PHOENIX EX FAMILY

- Motion sensor encased in an explosion-proof/flame-proof housing
- Three directional detection options and able to ignore parallel traffic
- Integrated tamper switch and resistors enable monitoring for security systems
- Ideal for intrusion detection applications
- Separate Order Form required
- Power: 12 – 24 VAC / VDC

Part Number	Description	Case Quantity	List Price
10PHOENIXEX	NEW - Phoenix EX - Motion sensor encased in an explosion-proof/flame-proof housing. Includes 100 ft cable 11.5 ft – 23 ft mounting height	-	\$2,099
10PHOENIXEXXL	NEW - Phoenix EX XL- Motion sensor encased in an explosion-proof/flame-proof housing. Includes 100 ft cable 6.5 ft – 11.5 ft mounting height	-	\$2,099
10PHOENIXEXW	NEW - Phoenix EX Wide - Motion sensor with extended width pattern encased in an explosion-proof / flame-proof housing. Includes 100 ft cable 11.5 ft – 21 ft mounting height	-	\$2,099



QUADSCAN I

- Active infrared safety sensor with 200% more coverage than a SuperScan-T I and the same effective coverage area as a SuperScan-T II
- Additional modules can be added (4 Modules, 6 @ 24 VDC, or 108 inches max)
- All modules are master modules. Only one module to stock!
- Contact your BEA Sales Representative before purchasing to qualify the application
- Power: 12 – 24 VAC / VDC



Part Number	Description	Case Quantity	List Price
10QUADSCANI	1 module, 34.5 inches end cap to end cap	6	\$336
10QUADSCANICUSTOM	1 module, custom length minimal size is 14 inches	6	\$350

R2E-100

- Active infrared sensor that mounts on or above the door frame with pattern placed in front of the door handle
- Rejects false detection for parallel traffic or objects slid under the door
- Optional alarm can be sounded when door is open or Maglock is activated
- 20 in – 48 in detection range with three inputs
- UL / ULC Listed
- Power: 12 – 24 VAC / VDC

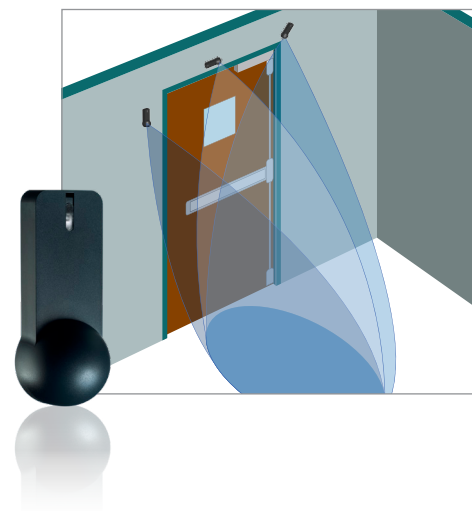


Part Number	Description	Case Quantity	List Price
10R2E-100	UL / ULC Listed, active infrared request-to-exit sensor specifically designed for access control applications	24	\$132

SPARROW

- K-Band microwave motion detection with motion tracking technology
- Unidirectional and bidirectional detection of both people and vehicles
- Microwave angle rotates from -180° – $+180^{\circ}$
- IP64 enclosure
- Adjustable detection zones up to a maximum of 20 ft x 30 ft
- Power: 12 – 24 VAC / VDC
- Adjustable manually or with the BEA Remote Control (recommended)

Part Number	Description	Case Quantity	List Price
10SPARROW	Variable mount motion sensor	-	\$370



SUPERSCAN-T I / SUPERSCAN-T II

- Can be mounted horizontal or vertical
- Low profile design reduces accidental damage
- Power: 12 – 24 VAC / VDC
- Capable of external monitoring

Part Number	Description	Case Quantity	List Price
10SSTI	Door mounted, active infrared safety sensor	6	\$280
10SSTI40	For 42 inch door (SuperScan length is 40 inches)	6	\$300
10SSTI42	For 44 inch door (SuperScan length is 42 inches)	6	\$315
10SSTI48	For 50 inch door (SuperScan length is 48 inches)	6	\$325
10SSTICUSTOM	For custom length SuperScan	6	\$336
10SSTII	1 Master, 1 Slave, 34.5 inch end cap to end cap (for 36 inch doors)	6	\$448
10SSTII40	1 Master, 1 Slave, 40 inch end cap to end cap (for 42 inch doors)	6	\$470
10SSTII42	1 Master, 1 Slave, 42 inch end cap to end cap (for 44 inch doors)	6	\$480
10SSTII44	1 Master, 1 Slave, 44 inch end cap to end cap (for 46 inch doors)	6	\$492
10SSTII48	1 Master, 1 Slave, 48 inch end cap to end cap (for 50 inch doors)	6	\$515
10SSTICUSTOM	1 Master, 1 Slave, custom length (24.5 inch minimum for 36 inch doors)	6	\$548
10SSTMASTER	SuperScan-T I Master module only	-	\$250
10SSTSLAVE	SuperScan-T I Slave module only	-	\$184
10SSQD	SuperScan-T quick disconnect	-	\$42



ELECTROMAGNETIC LOCKS - UL LISTED

- Available for single doors and double doors without center mullion
- Available with or without a door position switch. Suffix DS for additional door position switch option.
- Adjustable re-lock time delay (0 s – 90 s)
- Lock Status Sensor (Bond Sensor) and Visual LEDs
- **For use with Independent UL Listed Power Supply***
- Power: 12 / 24 VDC



Part Number	Description	Case Quantity	List Price
10MAGLOCK1UL	1200 lb - UL Listed single Maglock	4	\$325
10MAGLOCK1ULDS	1200 lb - UL Listed single Maglock (1) Door Status Sensor	4	\$339
10MAGLOCK3UL	600 lb - UL Listed single Maglock	10	\$305
10MAGLOCK3ULDS	600 lb - UL Listed single Maglock (1) Door Status Sensor	10	\$325
10MAGLOCK5UL	1200 lb - UL Listed double Maglock	2	\$779
10MAGLOCK5ULDS	1200 lb - UL Listed double Maglock (2) Door Status Sensors	2	\$785
10MAGLOCK6UL	600 lb - UL Listed double Maglock	5	\$495
10MAGLOCK6ULDS	600 lb - UL Listed double Maglock (2) Door Status Sensors	5	\$499

ELECTROMAGNETIC LOCKS - UL LISTED DELAYED EGRESS

- Includes: UL Maglock, Keyswitch, sounder and signage
- 1200 lb holding force
- Detection and alarm for low voltage supply condition (< 8V)
- Selectable 30-second door prop alarm
- Built in Fire Alarm Panel Interface Resistor (on FACP screw terminal)
- Synchronize pairs of doors using communications connector
- Selectable panic bar or door pressure alarm
- Up to 15 seconds unlock time
- UL 294 Listed
- Field selectable voltage
- ***For use with independent UL Listed Power Supply***
- Power: 12 / 24 VDC Selectable



Part Number	Description	Case Quantity	List Price
10MAGDE1	Delayed Egress Maglock for single out-swinging doors	4	\$1,110

ELECTROMAGNETIC LOCKS - UL LISTED GATELOCKS

- Available in a front mount model and a side mount model
- Adjustable re-lock time delay (0 s – 90 s)
- Lock Status Sensor (Bond Sensor)
- ***For use with Independent UL Listed Power Supply***
- Power: 12 / 24 VDC Selectable



Part Number	Description	Case Quantity	List Price
10GL1200R	1200 lb - Weather-resistant multi-purpose Maglock with 3/4 inch conduit fitting for front mounting	4	\$410
10GL1200SR	1200 lb - Weather-resistant multi-purpose Maglock without conduit fitting for side mounting	4	\$395

CABINET LOCK

- Designed for access control in low holding force applications such as pharmaceutical and retail cabinets / drawers
- Power: 12 / 24 VDC Selectable

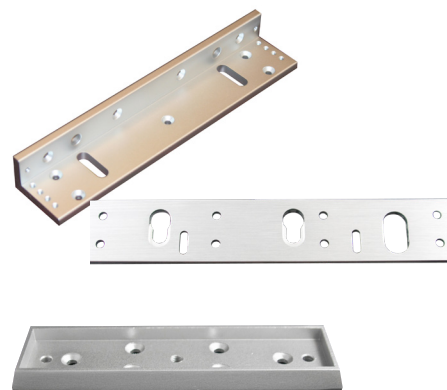


Part Number	Description	Case Quantity	List Price
10MAGLIFELOCK9	80 lb - mini mag cabinet lock 12 / 24 VDC	-	\$120

ELECTROMAGNETIC LOCKS - ACCESSORIES

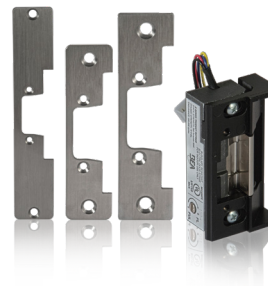
- Brackets, filler plates and spacers for BEA Maglocks

Part Number	Description	Case Quantity	List Price
10LZBRMAG1UL	ACCESSORY - (1) L Bracket & (1) Z Bracket for 10MAGLOCK1UL	10	\$64
10LZBRMAG3UL	ACCESSORY - (1) L Bracket & (1) Z Bracket for 10MAGLOCK3UL	10	\$52
MAG5LZUL	ACCESSORY - (2) L Brackets & (2) Z Brackets for 10MAGLOCK5UL	-	\$120
MAG6LZUL	ACCESSORY - (2) L Brackets & (2) Z Brackets for 10MAGLOCK6UL	-	\$93
10FILLER14UL	ACCESSORY - 0.25 inch filler bar for UL Maglocks	-	\$14
10FILLER12UL	ACCESSORY - 0.50 inch filler bar for UL Maglocks	-	\$16
10FILLER34UL	ACCESSORY - 0.75 inch filler bar for UL Maglocks	-	\$19
10FILLER58UL	ACCESSORY - 0.625 inch filler bar for UL Maglocks	-	\$21
10SPACER1UL	ACCESSORY - 0.25 inch vertical spacer for use with 1200 lb UL Maglocks	-	\$27
10SPACER3UL	ACCESSORY - 0.25 inch vertical spacer for use with 600 lb UL Maglocks	-	\$27
10RIMHOUSING1UL	ACCESSORY - Armature housing for use with 1200 lb UL Maglocks	-	\$36
10RIMHOUSING3UL	ACCESSORY - Armature housing for use with 600 lb UL Maglocks	-	\$36
10UBRACKETUL	ACCESSORY - Bracket for mounting a Maglock armature to a glass door	-	\$55
10LZBRGATE1200	ACCESSORY - Bracket includes (1) L&Z Bracket for models 10GL1200R & 10GL1200SR	-	\$66
50.0334	ACCESSORY - Screw pack for 10MAGLOCK1UL	-	\$11
50.0335	ACCESSORY - Screw pack for 10MAGLOCK3UL	-	\$11
50.0336	ACCESSORY - Signage for 10MAGDE1	-	\$55
50.0340	ACCESSORY - Cover Plate Only with DS Switch for 10MAGLOCK1ULDS	-	\$20
50.0341	ACCESSORY - Cover Plate Only with DS Switch for 10MAGLOCK3ULDS	-	\$11
50.0342	ACCESSORY - Cover Plate Only with DS Switch for 10MAGLOCK5ULDS	-	\$28
50.0343	ACCESSORY - Cover Plate Only with DS Switch for 10MAGLOCK6ULDS	-	\$17



ELECTRIC STRIKE - CYLINDRICAL UNIVERSAL

- Combines the three most used lock types for hollow metal, aluminum and wood door frames
- Accepts 0.50 inch or 0.625 inch latch projections - a perfect compliment for narrow style aluminum frames
- UL 294 listed
- Power: 12 – 24 VAC, 12 / 24 VAC / VDC



Part Number	Description	Case Quantity	List Price
10STRIKECU	UL / ULC Listed Universal Cylindrical Electric Strike with three faceplates for aluminum, hollow metal and wood frame installations	-	\$230

ELECTRIC STRIKE - RIM EXIT

- Conventional keeper design promotes even load distribution in the detection range event of a forced entry
- UL / ULC Listed for up to 1500 lb of static strength
- UL 294 listed
- Rugged, brushed stainless steel (32D)
- Power: 11 – 16 VAC, 12 / 24 VAC / VDC



Part Number	Description	Case Quantity	List Price
10STRIKERE	UL / ULC Listed surface mounted electric strike for Rim Exit device	-	\$490

ACCESS CONTROL PUSH BUTTON

- Illumination can be adjusted to bright or low light for improved visibility in poorly lit areas
- Momentary switch, no delay
- Input Power: 10 A at 125 / 250 VAC



Part Number	Description	Case Quantity	List Price
10ACPBS1	2 in x 4 in button "Push to Exit" text, green illuminated	24	\$55

PNEUMATIC PUSH BUTTON

- Adjustable hold time security button
- Input Power: 2.5 A 12 – 24 VAC / VDC



Part Number	Description	Case Quantity	List Price
10ACPBDA1	Jamb plate Oversized 2 inch RED button, "Push to Exit" text	-	\$385
10ACPBDA2	Single gang plate Oversized 2 inch RED button, "Push to Exit" text	-	\$389

Part Number	Description	Case Quantity	List Price
10ACPBDA3	Jamb plate Standard 1 5/8 inch RED button, "Push to Exit" text	-	\$385
10ACPBDA4	Single jamb plate Standard 1 5/8 inch RED button, "Push to Exit" text	-	\$389
10ACPBDA5	Jamb plate Oversized 2 inch BLUE button, Handicap logo	-	\$385
10ACPBDA6	Single gang plate Oversized 2 inch BLUE button, Handicap logo	-	\$389
10ACPBDA7	Jamb plate Standard 1 5/8 inch BLUE button, Handicap logo	-	\$385
10ACPBDA8	Single jamb plate Standard 1 5/8 inch BLUE button, Handicap logo	-	\$389
10ACPBDA9	Jamb plate Oversized 2 inch GREEN button, "Push to Exit" text	-	\$385
10ACPBDA10	Single gang plate Oversized 2 inch GREEN button, "Push to Exit" text	-	\$389
10ACPBDA11	Jamb plate Oversized 1 5/8 inch GREEN button, "Push to Exit" text	-	\$385
10ACPBDA12	Single gang plate Oversized 1 5/8 inch GREEN button, "Push to Exit" text	-	\$389



PIEZO BUTTON

- Uses piezoelectric technology to convert pressure on the button to a DRY contact relay pulse with no moving parts
- 1 to 40 second, user-adjustable output hold time
- Heavy duty construction
- Input Power: 12 to 24 V DC (auto-sensing)

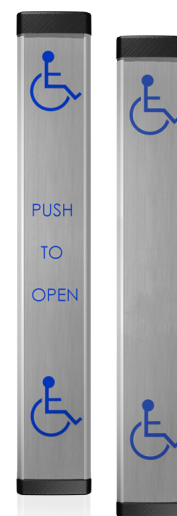
Part Number	Description	Case Quantity	List Price
10PIEZO241	Single gang piezo button for request to exit and access control packages	-	\$199
10BOX24SGSM	ACCESSORY - 2.75 in x 4.5 in single gang surface mount box	10	\$25



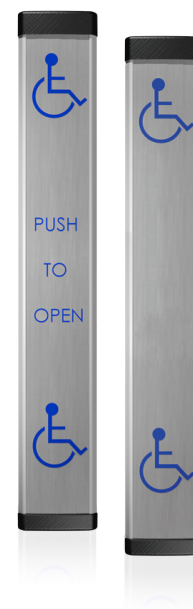
LPR36 - FULL LENGTH ACTUATOR

- Weather-resistant, stainless steel construction
- Membrane switches provide quiet and reliable activation
- Entire surface provides activation from any angle
- Exceeds California Building Code Section 1117B.6
- Can be mounted on a wall or to a BEA Bollard
- 6 in (W) x 36 in (H) x 1 in (D)

Part Number	Description	Case Quantity	List Price
10LPR36-HW	36 inch vertical actuation bar, Hardwired only (Text & Logo)	2	\$505
10LPR36L-HW	36 inch vertical actuation bar, Hardwired only (Logo Only)	2	\$505



Part Number	Description	Case Quantity	List Price
10LPR36-433	36 inch vertical actuation bar, 433 MHz Wireless (Text & Logo)	2	\$535
10LPR36L-433	36 inch vertical actuation bar, 433 MHz Wireless (Logo Only)	2	\$535
10LPR36-300	36 inch vertical actuation bar, 300 MHz Wireless (Text & Logo)	2	\$540
10LPR36L-300	36 inch vertical actuation bar, 300 MHz Wireless (Logo Only)	2	\$540
10LPR36-900	36 inch vertical actuation bar, 900 MHz Wireless (Text & Logo)	2	\$545
10LPR36L-900	36 inch vertical actuation bar, 900 MHz Wireless (Logo Only)	2	\$545
10LPRCAPKIT	ACCESSORY - Top and bottom replacement caps for the LPR36	-	\$25
10WCK433	ACCESSORY - Wireless conversion kit Converts Hardwired to 433 Wireless	-	\$38
10WCK900	ACCESSORY - Wireless conversion kit Converts Hardwired to 900 Wireless	-	\$75



MAGIC SWITCH - MS08

- Utilizes microwave motion technology
- Adjustable from 4 in – 24 in
- Can be configured for “Pulse” or “Toggle” use
- Microwave cell can be mounted behind drywall
- Comes with both single gang and double gang faceplates
- Power: 12 – 24 VAC / VDC

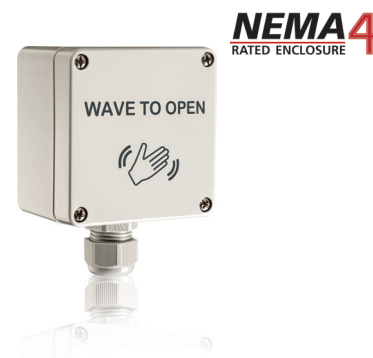
Part Number	Description	Case Quantity	List Price
10MS08U	MS08 Magic Switch microwave cell with both single & double gang black faceplate (Text and Logo)	24	\$247
10MS08UCUSTOM	MS08 Magic Switch microwave cell with custom faceplate - choose faceplate from the list below	24	\$247
70.5268	ACCESSORY - Single gang WHITE faceplate (Text and Logo)	-	\$11
70.5269	ACCESSORY - Double gang WHITE faceplate (Text and Logo)	-	\$11
70.5270	ACCESSORY - Single gang CREAM faceplate (Text and Logo)	-	\$11
70.5271	ACCESSORY - Double gang CREAM faceplate (Text and Logo)	-	\$11
70.5272	ACCESSORY - Single gang BLACK faceplate (plain)	-	\$11
70.5273	ACCESSORY - Double gang BLACK faceplate (plain)	-	\$11
70.5274	ACCESSORY - Single gang WHITE faceplate (plain)	-	\$11
70.5275	ACCESSORY - Double gang WHITE faceplate (plain)	-	\$11
70.5276	ACCESSORY - Single gang CREAM faceplate (plain)	-	\$11
70.5277	ACCESSORY - Double gang CREAM faceplate (plain)	-	\$11
70.5278	ACCESSORY - Single gang BLACK faceplate (Handicap logo only)	-	\$11
70.5279	ACCESSORY - Double gang BLACK faceplate (Handicap logo only)	-	\$11
10BOXDGSM	ACCESSORY - Double gang surface mount box	10	\$31
10BOX24SGSM	ACCESSORY - Single gang surface mount box	10	\$25



MAGIC SWITCH - MS09

- Utilizes microwave motion technology
- 4 in – 24 in detection range
- Can be configured for “Pulse” or “Toggle” use
- NEMA 4 / IP65 rated housing
- Power: 12 – 24 VAC / VDC

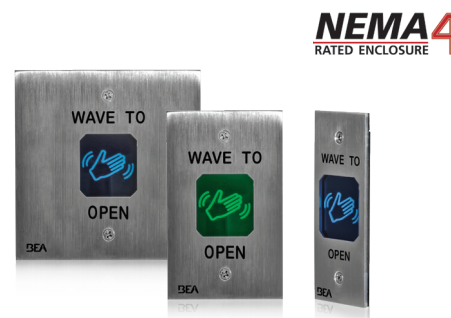
Part Number	Description	Case Quantity	List Price
10MS09L	MS09 Magic Switch microwave cell single gang white faceplate (Logo only)	-	\$279
10MS09TL	MS09 Magic Switch microwave cell single gang white faceplate (Text & Logo)	-	\$279



MAGIC SWITCH - MS11

- Utilizes microwave motion technology
- 2 in – 24 in detection range
- Can be configured for “Pulse” or “Toggle” use
- NEMA 4 / IP65 rated housing
- Audible and visual alert indications of activation
- Power: 12 – 24 VAC / VDC

Part Number	Description	Case Quantity	List Price
10MS11D	MS11 Magic Switch microwave cell double gang, 4.5 in x 4.5 in (Text and Logo)	36	\$305
10MS11S	MS11 Magic Switch microwave cell single gang, 4.5 in x 2.75 in (Text and Logo)	36	\$285
10MS11J	MS11 Magic Switch microwave cell Jamb, 4.5 in x 1.68 in (Text and Logo)	36	\$285
10MS11DW	White powder-coated MS11 Magic Switch microwave cell double gang, 4.5 in x 4.5 in (Text and Logo)	36	\$315
10MS11SW	White powder-coated MS11 Magic Switch microwave cell single gang, 4.5 in x 2.75 in (Text and Logo)	36	\$295
10MS11JW	White powder-coated MS11 Magic Switch microwave cell Jamb, 4.5 in x 1.68 in (Text and Logo)	36	\$295
10BOXDGSM	ACCESSORY - Double gang, surface mount box	-	\$31
10BOX24SGSM	ACCESSORY - Single gang, surface mount box	-	\$25
10BOXJAMBST	ACCESSORY - 1.5 in x 4.75 in jamb surface mount box Hardwired solutions only	98	\$10.50



MAGIC SWITCH - MS21

- Utilizes capacitance technology
- Short range detection zone reduces unwanted activations
- Touchless design reduces the spread of bacteria, disease and contamination
- Stainless steel faceplate reduces deterioration and damage caused by liquids and cleaning agents
- Power: 12 – 24 VAC / VDC

Part Number	Description	Case Quantity	List Price
10MS21HR1	6 inch round (Text & Logo)	12	\$178
10MS21HR	6 inch round (Text only)	12	\$178
10MS21HRL	6 inch round (Logo only)	12	\$178
10MS21HS1	4.75 inch square (Text & Logo)	12	\$178
10MS21HS	4.75 inch square (Text only)	12	\$178
10MS21HSL	4.75 inch square (Logo only)	12	\$178
20.2007	ACCESSORY - MS21 isolation module and PCBA Harness	-	\$31



PANTHER PLATES

- Easy mount wireless push plates integrated with a 433 or 900 MHz Transmitter
- All-active surface made of durable stainless steel
- Aesthetically pleasing slim-line profile with no visible mounting holes
- Housing can be directly installed to any flat surface using standard screws
- Can be used to cover any existing single or double gang boxes
- Power: 12 V A23 Battery



Part Number	Description	Case Quantity	List Price
10EMR6	Panther 6 inch round slim profile push plate assembly Blue "Push to Open" text With integrated 433 MHz transmitter	16	\$160
10EMR61	Panther 6 inch round slim profile push plate assembly Blue handicap logo and blue "Push to Open" text With integrated 433 MHz transmitter	16	\$160
10EMR6L	Panther 6 inch round slim profile push plate assembly Handicap logo only With integrated 433 MHz transmitter	16	\$160
10EMS475	Panther 4.75 inch square slim profile push plate assembly Blue "Push to Open" text With integrated 433 MHz transmitter	16	\$160
10EMS4751	Panther 4.75 inch square slim profile push plate assembly Blue handicap logo and blue "Push to Open" text With integrated 433 MHz transmitter	16	\$160
10EMS475L	Panther 4.75 inch square slim profile push plate assembly Blue handicap logo With integrated 433 MHz transmitter	16	\$160
10EMR475	Panther 4.75 inch round slim profile push plate assembly Blue "Push to Open" Text With integrated 433 MHz transmitter	16	\$160
10EMR4751	Panther 4.75 inch round slim profile push plate assembly Blue handicap logo and blue "Push to Open" text With integrated 433 MHz transmitter	16	\$160
10EMR475L	Panther 4.75 inch round slim profile push plate assembly Blue handicap logo With integrated 433 MHz transmitter	16	\$160
10EMR6-900	Panther 6 inch round slim profile push plate assembly Blue "Push to Open" text With integrated 900 MHz transmitter	16	\$175
10EMR61-900	Panther 6 inch round slim profile push plate assembly Blue handicap logo and blue "Push to Open" text With integrated 900 MHz transmitter	16	\$175
10EMR6L-900	NEW - Panther 6 inch round slim profile push plate assembly Handicap logo only With integrated 900 MHz transmitter	16	\$175
10EMS475-900	NEW - Panther 4.75 inch square slim profile Push Plate assembly Blue "Push to Open" text With integrated 900 MHz transmitter	16	\$175
10EMS4751-900	NEW - Panther 4.75 inch square slim profile Push Plate assembly Blue handicap logo and blue "Push to Open" text. With integrated 900 MHz transmitter	16	\$175
10EMS475L-900	NEW - Panther 4.75 inch square slim profile push plate assembly Blue handicap logo With integrated 900 MHz transmitter	16	\$175
10EMR475-900	NEW - Panther 4.75 inch round slim profile push plate assembly Blue "Push to Open" Text With integrated 900 MHz transmitter	16	\$175
10EMR4751-900	NEW - Panther 4.75 inch round slim profile push plate assembly Blue handicap logo and blue "Push to Open" text. With integrated 900 MHz transmitter	16	\$175
10EMR475L-900	NEW - Panther 4.75 inch round slim profile push plate assembly Blue handicap logo With integrated 900 MHz transmitter	16	\$175
15.5039	ACCESSORY - 433 MHz Transmitter board (Printed Circuit Board) PCB for Panther Plate	-	\$42
15.5142	ACCESSORY - PCB Battery CR2032 for Panther 900	-	\$52

PUSH PLATES - 6 INCH ROUND

- Stainless steel push plates

Part Number	Description	Case Quantity	List Price
10PBR1	6 inch round stainless steel plate Blue handicap logo and "Push to Open" text	20	\$63
10PBR	6 inch round stainless steel plate Blue "Push to Open" text	20	\$63
10PBRLL	6 inch round stainless steel plate Blue handicap logo only	20	\$63
10PBR1AL	6 inch round stainless steel plate Blue alternative accessibility logo only	20	\$63
10PBR10	6 inch round stainless steel plate Plain face	20	\$63
10ESCUTCHEON	ACCESSORY - Stainless steel mounting option used in place of mounting box	10	\$122
10BOX6RNDISM	ACCESSORY - 6 inch round surface mount box	42	\$42
10BOX6RNDIFM	ACCESSORY - 6 inch round flush mount box	30	\$42
10WRRND6	ACCESSORY - Weather Ring for 6 inch round box	-	\$5
10PBBRACKET	ACCESSORY - Surface mount kit (6 inch round and 4.75 inch square)	45	\$15
10PBBRACKETCA	ACCESSORY - Clear anodized surface mount kit (6 inch round and 4.75 inch square)	72	\$15
30.0385	ACCESSORY - Cherry Switch, plunger type, SPDT, 15 A	-	\$5
30.0388	ACCESSORY - Cherry Switch, DPDT, 15 A	-	\$30



PUSH PLATES - 4.5 INCH ROUND

- Stainless steel push plates

Part Number	Description	Case Quantity	List Price
10PBR451	4.5 inch round stainless steel plate Blue handicap logo and "Push to Open" text	20	\$54
10PBR45	4.5 inch round stainless steel plate Blue "Push to Open" text	20	\$54
10PBR45LL	4.5 inch round stainless steel plate Blue handicap logo only	20	\$54
10PBR4510	4.5 inch round stainless steel plate Plain face	20	\$54
10ESCUTCHEON45	ACCESSORY - Stainless steel mounting option (used in place of mounting box)	10	\$122
10BOX45RNDISM	ACCESSORY - 4.5 inch round surface mount box	54	\$29
10BOX45RNDIFM	ACCESSORY - 4.5 inch round flush mount box	36	\$29
10WRRND45	ACCESSORY - Weather ring for 4.5 inch round box	-	\$5
10BRINGC	ACCESSORY - Dress plate for 4.5 inch round push plate	10	\$12.50



PUSH PLATES - 6 INCH SQUARE

- Stainless steel push plates

Part Number	Description	Case Quantity	List Price
10PBS61	6 inch square stainless steel plate Blue handicap logo and "Push to Open" text	20	\$63
10PBS6	6 inch square stainless steel plate Blue "Push to Open" text	20	\$63
10PBS6LL	6 inch square stainless steel plate Blue handicap logo only	20	\$63
10PBS610	6 inch square stainless steel plate Plain face	20	\$63
10BOX6SQSM	ACCESSORY - 6 inch square surface mount box	26	\$42
10BOX6SQFM	ACCESSORY - 6 inch square flush mount box	18	\$42
30.0385	ACCESSORY - Cherry Switch, plunger type, SPDT, 15 A	-	\$5
30.0388	ACCESSORY - Cherry Switch, DPDT, 15 A	-	\$30



PUSH PLATES - 4.75 INCH SQUARE

- Stainless steel push plates

Part Number	Description	Case Quantity	List Price
10PBS1	4.75 inch square stainless steel plate Blue handicap logo and "Push to Open" text	20	\$63
10PBS	4.75 inch square stainless steel plate Blue "Push to Open" text	20	\$63
10PBSE	4.75 inch square stainless steel plate Blue "Push to Exit" text	20	\$63
10PBSLL	4.75 inch square stainless steel plate Blue handicap logo only	20	\$63
10PBS1AL	4.75 inch square stainless steel plate Blue alternative accessibility logo only	20	\$63
10PBS10	4.75 inch square stainless steel plate Plain face	20	\$63
10PBS1B	4.75 inch square stainless steel plate Blue plate with White handicap logo and "Push to Open" text	20	\$63
10PBS1BB	4.75 inch square stainless steel plate BHMA Finish 605, Bright Brass Blue handicap logo and "Push to Open" text	20	\$210
10PBS1SB	4.75 inch square stainless steel plate BHMA Finish 606, Satin Brass Blue handicap logo and "Push to Open" text	20	\$210
10BOX475SQSMEBA	NEW ACCESSORY - 4.75 inch square surface mount box with easy battery access	-	\$42
10BOX475SQSM	ACCESSORY - 4.75 inch square surface mount box	42	\$40
10BOX475SQFM	ACCESSORY - 4.75 inch square flush mount box	24	\$40
10WRSQ475	ACCESSORY - Weather Ring for 4.75 inch square box	-	\$5
10PBBRACKET	ACCESSORY - Surface mount kit 6 inch round and 4.75 inch square	-	\$15
10PBBRACKETCA	ACCESSORY - Clear anodized surface mount kit 6 inch round and 4.75 inch square	-	\$15



PUSH PLATES - 4.5 INCH SQUARE

- Stainless steel push plates

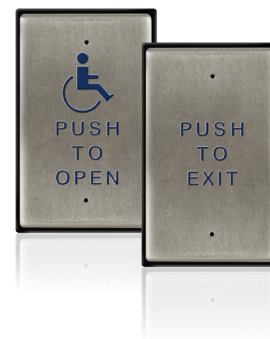
Part Number	Description	Case Quantity	List Price
10PBS45	4.5 inch square stainless steel plate Blue "Push to Open" text	20	\$58
10PBS451	4.5 inch square stainless steel plate Blue handicap logo and "Push to Open" text	20	\$58
10PBS45LL	4.5 inch square stainless steel plate Blue handicap logo only	20	\$58
10PBS451AL	4.5 inch square stainless steel plate Blue alternative accessibility logo only	20	\$58
10PBS4510	4.5 inch square stainless steel plate Plain face	20	\$58
10PBS45B	4.5 inch square blue stainless steel plate White "Push to Open" text	20	\$58
10PBS451B	4.5 inch square blue stainless steel plate White handicap logo and "Push to Open" text	20	\$58
10PBS2GBLK	4.5 inch square stainless steel plate Black "Push to Open" text	20	\$58
10PBS45POD	4.5 inch square stainless steel plate Black "Press to Operate Door" text	20	\$58
10BOX45SQSM	ACCESSORY - 4.5 inch square surface mount box	45	\$29
10BOXDGSM	ACCESSORY - Double gang surface mount box	-	\$31
10BOX45SQFM	ACCESSORY - 4.5 in x 4.5 in flush mount box	-	\$29



PUSH PLATES - SINGLE GANG

- Stainless steel push plates

Part Number	Description	Case Quantity	List Price
10PBO241	2.75 in x 4.5 in single gang stainless steel plate Blue handicap logo and "Push to Open" text	20	\$65
10PBO24E	2.75 in x 4.5 in single gang stainless steel plate Blue "Push to Exit" text	20	\$65
10PBO24L	2.75 in x 4.5 in single gang stainless steel plate Blue handicap logo only	20	\$65
10PBO2410	2.75 in x 4.5 in single gang stainless steel plate Plain Face	20	\$65
10BOX24SGSM	ACCESSORY - Single gang surface mount box	-	\$25



PUSH PLATES - VESTIBULE

- Stainless steel push plates

Part Number	Description	Case Quantity	List Price
10PBDGP1	4 in x 4 in stainless steel dual Push Plate for vestibule Includes adapter ring, two separate Push Plates with blue handicap logo Arrow and Blue "Push to Open" Text on one back plate **Requires (2) 10TD433PB3V or (2) 10TD900PB Transmitters**	20	\$88
10BOX475SQSM	ACCESSORY - 4.75 inch square surface mount box	42	\$40
10BOX475SQFM	ACCESSORY - 4.75 inch square flush mount box	24	\$40



PUSH PLATES - JAMB

- Stainless steel push plates

Part Number	Description	Case Quantity	List Price
10PBJ1	1.5 in x 4.75 in jamb plate Blue handicap logo and "Push to Open" text	20	\$55
10PBJ	1.5 in x 4.75 in jamb plate Blue "Push to Open" text	20	\$55
10PBJE	1.5 in x 4.75 in jamb plate Blue "Push to Exit" text	20	\$55
10PBJL	1.5 in x 4.75 in jamb plate Blue handicap logo only	20	\$55
10PBJ10	1.5 in x 4.75 in jamb plate Plain face	20	\$55
10PBJ1B	1.5 in x 4.75 in blue jamb plate White handicap logo and "Push to Open" text	20	\$55
10PBJLB	1.5 in x 4.75 in blue jamb plate White handicap logo only	20	\$55
10PBJM1	1.5 in x 4.75 in jamb plate Blue handicap logo and "Push to Open" text Includes microswitch with 2-stud touch points	20	\$55
10PBJML	1.5 in x 4.75 in jamb plate Blue handicap logo only Includes microswitch with 2-stud touch points	20	\$55
10PBJMS1	1.75 in x 4.75 in jamb plate Blue handicap logo and "Push to Open" text Includes microswitch with 2-stud touch points	40	\$55
10PBJMSLL	1.75 in x 4.75 in jamb plate Blue handicap logo only Includes microswitch with 2-stud touch points	40	\$55
10PJSREV	Jamb 1.75 X 4.5 Braille/PUSH TO SLOW text	-	\$58
10BOXJAMBSM	ACCESSORY - 1.5 in x 4.75 in jamb surface mount box (for use with 10TD433PB3V transmitter)	56	\$10.50
10BOXJAMBFM	ACCESSORY - 1.5 in x 4.75 in jamb flush mount box (for use with 10TD433PB3V transmitter)	48	\$10.50
10BOXJAMBST	ACCESSORY - 1.5 in x 4.75 in jamb surface mount box Hardwired solutions only	98	\$10.50



PUSH PLATE - BOLLARDS

- Available in Silver, Bronze and Black
- Powder coated carbon steel post construction
- ABS high impact polymer cap provides a path for wireless transmission
- Can accommodate 4.5 inch and 4.75 inch square, 4.5 inch round and Vestibule Plate



Part Number	Description	Case Quantity	List Price
10BOLLARDBLK	Black Bollard 42 in (H) X 6 in (W) X 4 in (D)	1	\$340
10BOLLARDBRZ	Bronze Bollard 42 in (H) X 6 in (W) X 4 in (D)	1	\$340
10BOLLARDSLV	Silver Bollard 42 in (H) X 6 in (W) X 4 in (D)	1	\$340
WOH	Add WOH Option to any Bollard (No Holes in Bollard - Price for ALL FINISHES)	1	\$330
50.5320	NEW ACCESSORY - Hardware pack for Bollard (includes LARGER compression bolts, undercut screws and washers)	-	\$37.50
70.5022	NEW ACCESSORY - U Shaped Bollard Mounting Bracket (bracket only) - LARGER SCREW HOLES	-	\$70
50.0073	ACCESSORY - Shelf for Transmitter	-	\$1.25
70.0195	ACCESSORY - Bollard Cap	-	\$50

KEYSWITCHES

- Access control switch plate

Part Number	Description	Case Quantity	List Price
10KEYSWITCHONF	Keyswitch, On/Off, single gang (cylinder not included)	24	\$90
10KEYSWITCHMOM	Keyswitch, momentary, single gang (cylinder not included)	24	\$90
10JAMBSWITCHONF	Jambswitch, On/Off (cylinder not included)	24	\$90
10JAMBSWITCHMOM	Jambswitch, momentary (cylinder not included)	24	\$90
10COMBOPLATE	Maintained Contact Keyswitch and Push Plate Switch Combination Option 1: The Keyswitch and the Push Plate can be set up to work independently of each other Option 2: The Keyswitch can turn the Push Plate On & Off, providing an economical solution to secure the door after hours	20	\$212
10COMBOPLATEMOM	Momentary Contact Keyswitch & Push Plate Switch Combination Option 1: The Keyswitch and the Push Plate can be set up to work independently of each other Option 2: The Keyswitch can turn the Push Plate On & Off, providing an economical solution to secure the door after hours	20	\$212
10CYLINDERKD	Mortise cylinder 1 1/8 in US26D Standard Cam Schlage C Keyway Keyed Different	-	\$28
10CYLINDERKA	Mortise cylinder 1 1/8 in US26D Standard Cam Schlage C Keyway Keyed Alike	-	\$28



UNIVERSAL KEYPAD FAMILY

- Access control keypads for indoor and outdoor use (IP66 rated)
- Accepts up to 1,010 individual user codes (zone 1: 1,000, zone 2: 10)
- Power: 12 – 24 VAC / VDC (DO NOT EXCEED 30 VDC or 24 VAC)

Part Number	Description	Case Quantity	List Price
10KEYPADU	NEW - Universal Indoor / Outdoor Keypad	-	\$207
10KEYPADUSL	NEW - Slim-line Universal Indoor / Outdoor Keypad	-	\$207



900 MHZ WIRELESS

- Performs up to 500 ft line of sight
- Works through Low-E glass
- Up to four separate wireless receivers can be activated by a single transmitter
- Built-in signal strength on receiver
- Built-in low battery transmitter indicator
- A maximum of 75 transmitters can be programmed to one receiver
- Transmits a unique rolling code each time the switch is closed
- NEMA 4 rated handheld transmitters available
- Receiver Power: 12 – 24 VAC / VDC
- Transmitter Power: Flag Connector: 2 AAA Batteries, Handhelds: One 3 V Battery
- Convenient belt clip accessory available for the industrial handheld transmitter series

NEMA4
RATED ENCLOSURE



Part Number	Description	Case Quantity	List Price
10RD900	900 MHz digital receiver	100	\$62
10TD900HH1	900 MHz digital handheld transmitter - 1 button	100	\$63
10TD900HH2	900 MHz digital handheld transmitter - 2 button	100	\$76
10TD900HH3	900 MHz digital handheld transmitter - 3 button	100	\$78
10TD900HH4	900 MHz digital handheld transmitter - 4 button	100	\$80
10TD900HH1U	NEW - Universal 900 MHz digital handheld transmitter - 1 button	100	\$66
10TD900INDHH1	900 MHz handheld NEMA 4 rated industrial transmitter - 1 button	100	\$68
10TD900INDHH2	900 MHz handheld NEMA 4 rated industrial transmitter - 2 button	100	\$81
10TD900INDHH3	900 MHz handheld NEMA 4 rated industrial transmitter - 3 button	100	\$83
10TD900INDHH4	900 MHz handheld NEMA 4 rated industrial transmitter - 4 button	100	\$85
10TD900PB	900 MHz digital flag connector transmitter for use with ALL activation push plates (2) AAA Batteries	100	\$60
10TD900TR	NEW - 900 MHz digital touchless retrofit transmitter 12 / 24 VAC	-	\$65
10BELTCLIP	ACCESSORY - belt clip compatible with the industrial handheld transmitter	-	\$7.50
30.5124	ACCESSORY - 3 V Lithium coin battery	-	\$5

433 MHZ WIRELESS

- Up to four separate wireless receivers can be activated by a single transmitter
- A maximum of 100 transmitters can be programmed to one receiver
- Transmits a unique rolling code each time the switch is closed
- Receiver Power: 12 – 24 VAC / VDC
- Transmitter Power: Flag Connector: One 9 V Battery, Handhelds: One 3 V Battery



Part Number	Description	Case Quantity	List Price
10RD433	433 MHz digital receiver	100	\$59
10RD433EH	433 MHz digital receiver with extended hold time Maintains activation for as long as signal is received	100	\$59
10TD433HH1	433 MHz digital handheld transmitter - 1 button	100	\$53
10TD433HH2	433 MHz digital handheld transmitter - 2 button	100	\$69
10TD433HH3	433 MHz digital handheld transmitter - 3 button	100	\$71
10TD433HH4	433 MHz digital handheld transmitter - 4 button	100	\$73
10TD433PB9V	433 MHz digital flag connector transmitter for ALL activation Push Plates except Jamb and Vestibule	100	\$53
10TD433PB3V	433 MHz digital flag connector transmitter for Jamb and Vestibule activation push plates only	100	\$53
30.5124	ACCESSORY - 3 V Lithium replacement battery for 10TD433PB3V	-	\$5
70.0261	ACCESSORY - 9 V Lithium replacement battery for 10TD433PB9V	-	\$8

300 MHZ WIRELESS

- Offers over 1,000 unique codes using DIP switches
- Flag connectors plug directly into BEA activation push plates
- 10 position access code DIP switch set up
- Receiver Power: 12 – 24 VAC / VDC
- Transmitter Power: See below

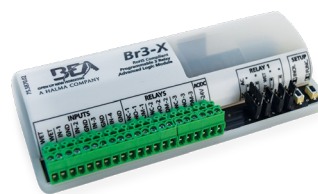


Part Number	Description	Case Quantity	List Price
10R300	300 MHz analog receiver	50	\$86
10T300HH	300 MHz analog handheld transmitter 1 Button (with case and clip)	25	\$71
10T300HHDBL	300 MHz analog handheld transmitter 2 Buttons (with case and clip)	25	\$67
10T300HH4	300 MHz analog handheld transmitter 4 Buttons (with case and clip)	25	\$71
10T300PB	300 MHz analog flag connector transmitter for ALL activation plates except Jamb and Vestibule 9 V Battery	25	\$61
10T300MINIPB	300 MHz analog flag connector transmitter for Jamb and Vestibule Plates only 12 V Battery	25	\$71
10T300KEYCHAIN	300 MHz Analog key chain transmitter 3 buttons, 12 V Battery	25	\$71

BR3 FAMILY LOGIC MODULES

- 12 and 13 function, programmable 3 relay logic modules

Part Number	Description	Case Quantity	List Price
10BR3X	NEW - Programmable 3 relay advanced logic module with 13 unique functions including day / night (24 hr) and normally locked / normally unlocked restroom modes	50	\$121



BR2-900 LOGIC MODULES

- 2 relay logic module with built-in 900 MHz wireless technology

Part Number	Description	Case Quantity	List Price
10BR2-900	NEW - Programmable 3 relay logic module with 12 unique functions commonly used for time delay	50	\$164
10TD900HH1U	NEW - Universal 900 MHz digital handheld transmitter - 1 button	100	\$66



LOGIC MODULES

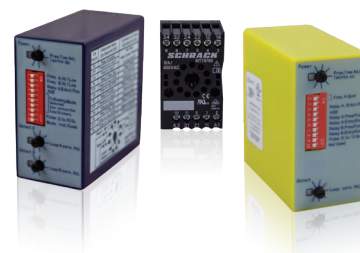
- Single function

Part Number	Description	Case Quantity	List Price
10MC25	Delay on make / delay on break time delay module ideal for use when either a magnetic lock or electric strike is installed on an automatic door	25	\$96
10LE21	Lock out module for low energy doors that inhibit approach-side SuperScan-T sensors on automatic doors when used manually	-	\$52



MATRIX FAMILY

- Induction loop detectors for vehicular traffic
- Ideal solution for Parking Barrier Control, Motorized Gates & Doors, Vehicle Access Control & Industrial Control Systems
- Automatic Sensitivity Boost increases the sensitivity upon detection
11-PIN CONFIGURATION IS COMPATIBLE WITH ALL COMPETITIVE SOCKETS
- Power: 12 – 24 VAC / VDC, 110 – 120 VAC



Part Number	Description	Case Quantity	List Price
10MATRIXD110	110 – 120 VAC, Dual loop detector	50	\$200
10MATRIXD1224	12 – 24 VAC / VDC, Dual loop detector	50	\$200
10MATRIXIIS110	110 – 120 VAC, Single or dual loop detector	50	\$170
10MATRIXIIS1224	12 – 24 VAC / VDC, Single or dual loop detector	50	\$170
10MATRIX-3-D	12 – 24 VAC / VDC, Dual loop detector	50	\$200
10MATRIX-3-S	12 – 24 VAC / VDC, Single loop detector	50	\$170
10MATRIXHARN	11-pin matrix harness, 72 in (6 ft) length	-	\$12
70.0262	ACCESSORY - 11-pin socket based DIN rail	-	\$7.60

ACCESS CONTROL PACKAGES

- Available for single doors
- Provided wiring diagrams - makes installation easier
- Power: 12 – 24 VDC



Part Number	Description	Case Quantity	List Price
10ACP12	(1) 10PS12-24 Power Supply - UL filtered and regulated (1) 10MAGLOCK1UL 1200 lb UL Listed Maglock (1) 10R2E Request-to-Exit sensor (1) 10ACPBSS1 "Push to Exit" button (1) 10BR3 Logic Module (1) Wiring diagram	1	\$605
10ACP6	(1) 10PS12-24 Power Supply - UL filtered and regulated (1) 10MAGLOCK3UL 600 lb UL Listed Maglock (1) 10R2E Request-to-Exit sensor (1) 10ACPBSS1 "Push to Exit" button (1) 10BR3 Logic Module (1) Wiring diagram	1	\$585
10ACP12F	(1) 10PS12-24 Power Supply - UL filtered and regulated (1) 10MAGLOCK1UL 1200 lb UL Listed Maglock (1) 10FLYKITB Request-to-Exit sensor (1) 10ACPBSS1 "Push to Exit" button (1) 10BR3 Logic Module (1) Wiring diagram	1	\$605
10ACP6F	(1) 10PS12-24 Power Supply - UL filtered and regulated (1) 10MAGLOCK3UL 600 lb UL Listed Maglock (1) 10FLYKITB Request-to-Exit sensor (1) 10ACPBSS1 "Push to Exit" button (1) 10BR3 Logic Module (1) Wiring diagram	1	\$585
10ACP12DS	(1) 10PS12-24 Power Supply - UL filtered and regulated (1) 10MAGLOCK1ULDS 1200 lb UL Listed Maglock DS (1) 10R2E-100 Request-to-Exit sensor (1) 10ACPBSS1 "Push to Exit" button (1) 10BR3 Logic Module (1) Wiring diagram	1	\$624
10ACP6DS	(1) 10PS12-24 Power Supply - UL filtered and regulated (1) 10MAGLOCK3ULDS 600 lb UL Listed Maglock DS (1) 10R2E-100 Request-to-Exit sensor (1) 10ACPBSS1 "Push to Exit" button (1) 10BR3 Logic Module (1) Wiring diagram	1	\$624
10ACP12FDS	(1) 10PS12-24 Power Supply - UL filtered and regulated (1) 10MAGLOCK1ULDS 1200 lb UL Listed Maglock DS (1) 10FLYKITB Request-to-Exit sensor (1) 10ACPBSS1 "Push to Exit" button (1) 10BR3 Logic Module (1) Wiring diagram	1	\$604
10ACP6FDS	(1) 10PS12-24 Power Supply - UL filtered and regulated (1) 10MAGLOCK3ULDS 600 lb UL Listed Maglock DS (1) 10FLYKITB Request-to-Exit sensor (1) 10ACPBSS1 "Push to Exit" button (1) 10BR3 Logic Module (1) Wiring diagram	1	\$604

LOW ENERGY REACTIVATION PACKAGES

- All-in-one reactivation packages for low energy doors

Part Number	Description	Case Quantity	List Price
LE PACKAGE 6 SECURITY	(1) 10SSTI - SuperScan-T door mounted safety sensor - Master only 34.5 inches end cap to end cap (13 inch minimum) (1) 10BR3 - Br3 Programmable 3 relay logic module (1) 10SWITCH75 - Magnetic door position switch 0.50 inch gap, NO/NC, SPDT, 0.44 inch diameter, flush mount	1	\$530



SECURITY SPECIFIC PUSH PLATE PACKAGES

- Convenient packages built with BEA's most popular push plates

Part Number	Description	Case Quantity	List Price
PUSH PLATE 45S-433	(2) PBS451 - square push plates (2) 10BOX45SQSM - surface mount boxes (2) 10TD433PB3V - 3 V 433 MHz transmitter (1) 10RD433 - 433 MHz receiver	1	\$344
PUSH PLATE 45S-900	(2) PBS451 - square push plates (2) 10BOX45SQSM - surface mount boxes (2) 10TD900PB - 900 MHz transmitter (1) 10RD900 - 900 MHz receiver	1	\$377
PUSH PLATE 45S-HW	(2) PBS451 - square push plates (2) 10BOX45SQSM - surface mount boxes HARDWIRED SOLUTION ONLY	1	\$176
PUSH PLATE 45S-BR900	(2) PBS451, (2) 10BOX45SQSM, (2) 10TD900PB & (1) 10BR2-900	1	\$485
PUSH PLATE 475S-433	(2) PBS1 - square push plates (2) 10BOX475SQSM - surface mount boxes (2) 10TD433PB3V - 3 V 433 MHz transmitter (1) 10RD433 - 433 MHz receiver	1	\$385
PUSH PLATE 475S-900	(2) PBS1 - square push plates (2) 10BOX475SQSM - surface mount boxes (2) 10TD900PB - 900 MHz transmitter (1) 10RD900 - 900 MHz receiver	1	\$399
PUSH PLATE 475S-HW	(2) PBS1 - square push plates (2) 10BOX475SQSM - surface mount boxes HARDWIRED SOLUTION ONLY	1	\$215
PUSH PLATE 475S-BR900	(2) PBS1, (2) 10BOX475SQSM, (2) 10TD900PB & (1) 10BR2-900	1	\$498
PUSH PLATE 475S-EBA	(2) PBS1, (2) 10BOX475SQSMEBA, (2) 10TD900PB & (1) 10RD900	1	\$399
PUSH PLATE 6R-433	(2) PBR1 - round push plates (2) 10BOX6RNDISM - surface mount boxes (2) 10TD433PB3V - 3 V 433 MHz transmitter (1) 10RD433 - 433 MHz receiver	1	\$385
PUSH PLATE 6R-900	(2) PBR1 - round push plates (2) 10BOX6RNDISM - surface mount boxes (2) 10TD900PB - 900 MHz transmitter (1) 10RD900 - 900 MHz receiver	1	\$403
PUSH PLATE 6R-BR900	(2) PBR1, (2) 10BOX6RNDISM, (2) 10TD900PB & (1) 10BR2-900	1	\$498
PUSH PLATE JAMB-900	(2) PBJ1, (2) 10BOXJAMBSM, (2) 10TD900PB, (1) 10RD900	1	\$319
PUSH PLATE JAMB-433	(2) PBJ1, (2) 10BOXJAMBSM, (2) 10TD433PB3V, (1) 10RD433	1	\$292
VESTIBULE PACKAGE 433	(1) 10PBDGP1 - vestibule plate (3) 10BOX475SQSM - surface mount boxes (2) 10PBS1 Square Push Plates (4) 10TD433PB3V - 3 V 433 MHz transmitter (2) 10RD433 - 433 MHz receiver	1	\$695
VESTIBULE PACKAGE 900	(1) 10PBDGP1 - vestibule plate (3) 10BOX475SQSM - surface mount boxes (2) PBS1 Square Push Plates (4) 10TD900PB - 900 MHz transmitter (2) 10RD900 - 900 MHz receiver	1	\$745



RESTROOM KIT

- For single occupancy normally locked / normally unlocked restrooms

Part Number	Description	Case Quantity	List Price
10RESTROOMKIT	(1) 10PTLBUTTON - "Push to Lock" Button (1) 10LEDSOUNDER - Occupied Indicator (1) 10BR3X - 3-Relay Logic Module (1) 10SWITCH1084 - Door Position Switch	-	\$260
10BR3X	Programmable 3 relay advanced logic module with 12 unique functions including day / night (24 hr) and normally locked / normally unlocked restroom modes	50	\$121
10PTLBUTTON	ACCESSORY - "Push to Lock" Button	-	\$64
10LEDSOUNDER	ACCESSORY - Occupied Indicator	-	\$116
10SWITCH1084	ACCESSORY - Door Position Switch	-	\$11



EMERGENCY ADD-ON KIT

- For single occupancy restrooms
- Meets building codes requiring an emergency request system

Part Number	Description	Case Quantity	List Price
10EMERGENCYKIT	(1) 10EBUTTONCOMBO - "Push for Emergency Assistance" Button + Indicator (LED + Sounder) (1) 10ARS - "Assistance Required" Signal (1) 70.5675 - Emergency Signage (FR/EN)	-	\$499
10EBUTTONCOMBO	ACCESSORY - "Push for Emergency Assistance" Button + Indicator (LED + Sounder)	-	\$286
10ARS	ACCESSORY - "Assistance Required" Signal	-	\$194
70.5675	ACCESSORY - Emergency Signage (FR/EN)	-	\$14



LED SIGNAL LIGHTS

- Warning indication solutions when coupled with BEA sensors and BEA logic modules
- Column Light series - 18 – 30 VDC, field wired
- Traffic Light series - 15 – 30 VDC, field wired
- Modular Light series - 12 – 30 VDC, field wired

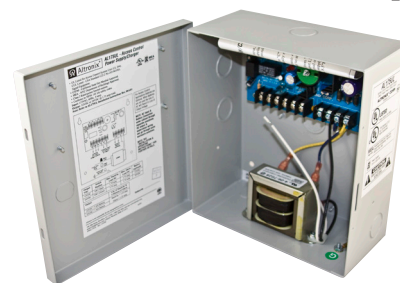
Part Number	Description	Case Quantity	List Price
10LIGHTC-Y	LED Column Signal Light - yellow with PNP inputs	-	\$129
10LIGHTC-R	LED Column Signal Light - red with PNP inputs	-	\$129
10LIGHTC-G	LED Column Signal Light - green with PNP inputs	-	\$129
10LIGHTC-RA	LED Column Signal Light - red with PNP inputs and audible alarm	-	\$207
10LIGHTC-YA	LED Column Signal Light - yellow with PNP inputs and audible alarm	-	\$207
10LIGHTD-RG	LED Traffic Signal Light - double light with red and green indicators, field wired	-	\$308
10LIGHTS-G	LED Traffic Signal Light - single light with green indicator, field wired	-	\$178
10LIGHTS-R	LED Traffic Signal Light - single light with red indicator, field wired	-	\$178
10LIGHT-TG	LED Modular Signal Light - single color unit (green)	-	\$127
10LIGHT-TR	LED Modular Signal Light - single color unit (red)	-	\$127
10LIGHT-TW	LED Modular Signal Light - single color unit (white)	-	\$127
10LIGHT-TY	LED Modular Signal Light - single color unit (yellow)	-	\$127
10LIGHT-TBASE	LED Modular Signal Light base with 2 m, 8-wire integral cable	-	\$84
10LIGHT-A	TI70 audible module; standard voltage, 12 – 30 VDC, black	-	\$126
10LIGHTBRACKET	Lighting and indicator bracket - S/S, Right angle, 2.72 in x 1.77 in x 2.40 in	-	\$31
10LIGHTBRACKET-TL70	LED Signal Light Bracket - 30mm, 12 gauge SS, curved mounting	-	\$31



POWER SUPPLIES AND TRANSFORMERS

- UL Listed Power Control unit
- Can be ordered with optional battery backup systems to power devices in the case of power loss
Batteries not available from BEA
- Contact BEA for additional Power Supply options

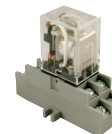
Part Number	Description	Case Quantity	List Price
10PS12-24	Input 115 VAC / 60 Hz, Output 12 VDC / 24 VDC, 1.75 A	-	\$270
10PS12-24D	With battery backup circuit: Input 115 VAC / 60Hz, Output 12 VDC / 24 VDC	-	\$290
10PSVR5T	24 VAC or 24 VDC Power Conversion Module	-	\$260
10PSMDR2024	Meanwell power supply - 100 – 240 VAC / 24 DC output	-	\$75
1012VAC*	12 VAC (20 VA) transformer with mounting feet	-	\$21
1024VAC*	24 VAC (40 VA) transformer with mounting feet NOT SUITABLE FOR USE WITH 10KEYPADU	-	\$21
1024VACGRAINGER*	24 VAC (40 VA) Class I transformer with mounting bracket *Not recommended to power UL / ULC tested maglocks	-	\$29



ACCESSORIES

- BEA's line of supplemental door accessories

Part Number	Description	List Price
10DOORSWITCH	ACCESSORY - On/Off/Hold Open Switch	\$37
10INDBRACKET	ACCESSORY - Heavy duty powder coated steel extension bracket Adjustable from 20 in – 36 in	\$168
10MINIBRACKET	ACCESSORY - Short adjustable mounting bracket Adjustable from 6 in – 10 in	\$84
10LBA	ACCESSORY - Laser LZR bracket for ceiling, horizontal or pole mounting	\$43
10LE21	ACCESSORY - Low Energy Lock Out module	\$52
10REL12VAC	ACCESSORY - DPDT isolation relay, 12 VAC only	\$35
10REL12VDC	ACCESSORY - DPDT isolation relay, 12 VDC only	\$35
10REL24V	ACCESSORY - DPDT isolation relay, 24 VAC only	\$27
10REL24VDC	ACCESSORY - DPDT isolation relay, 24 VDC only	\$28
10REMOTE	ACCESSORY - BEA universal remote control Easily adjust BEA overhead sensors without the use of a ladder. One remote can be used for multiple sensors	\$60
10SPOTFINDER	ACCESSORY - Active infrared spot finder LED indicators illuminate when spot finder detects infrared light Can be used on any active infrared emitting device	\$49
10SWITCH75	ACCESSORY - Miniature magnetic door position switch 0.50 inch gap, NO / NC, SPDT 0.44 inch diameter, flush mount	\$11
10SWITCH1076	ACCESSORY - Miniature magnetic door position switch 0.75 to 2 inch gap, NO / NC, SPDT 0.875 inch diameter, flush mount	\$39
10SWITCH1084	ACCESSORY - Miniature magnetic door position switch 2 inch gap, NO, SPDT surface mount with terminal strip	\$11
10SWITCH1277	ACCESSORY - Miniature magnetic door position switch 0.50 inch gap, NO / NC, SPDT 0.375 inch diameter, flush mount	\$25
30.5580	ACCESSORY - Miniature magnetic door position switch 0.75 inch gap, NO, SPST 0.375 inch diameter, flush mount	\$12.50
50.5283	ACCESSORY - Miniature magnetic door position switch 0.75 inch gap, NO, SPST, flush mount	\$25





SECURITY & ACCESS CONTROL LINE CARD

SENSORS

Microwave

- NEMA 4 / IP65 Rated
- Explosion Proof

Passive Infrared

Active Infrared

Request-to-Exit

Laser

Induction Loops

ELECTROMAGNETIC LOCKS

80 lb Cabinet Lock

UL Listed

- Single & Double
- 600 lb & 1200 lb
- With Door Position Switch
- NEMA 4 Rated Gatelocks
- Delayed Egress Lock Kit

ELECTRIC STRIKES

Rim Exit

Cylindrical Universal

ACCESS CONTROL

Logic Modules

Keypads

Keyswitches

Comboplates

Piezo

Pneumatic Push Buttons

Request-to-Exit Buttons

ACTIVATION PLATES

Touchless Plates

Push Plates

- 36" Vertical Plate
- 4.5" / 4.75" / 6" Square
- 4.5" / 6" Round
- Single Gang

- Jamb Style

- Vestibule

Packages Available!

WIRELESS

Receivers & Transmitters

- 300 MHz
- 433 MHz
- 900 MHz

LOW ENERGY SAFETY

ADA Compliant Door

Packages

ACCESSORIES

Bollards

Mounting Boxes

Mounting Brackets

LED Signal Lights

Power Supplies

In addition to offering a complete line of security and access control devices that create safer and smarter environments, BEA is recognized for world-class customer service and technical support with decades of experience in the industry.

**WITH EAST AND WEST COAST WAREHOUSE LOCATIONS
97% OF ORDERS SHIP SAME DAY!**

BEA, Inc.

100 Enterprise Drive,

Pittsburgh, PA 15275

www.BEAinc.com

T: 800.523.2462

F: 888.523.2462

orders@BEAinc.com