

**USER MANUAL – MODELS 6002NA/V1/V2/ & 7002xx**  
**QUESTIONS? EMAIL US AT INFO@BEDJET.COM OR CALL 401-404-5250**  
**WE ARE HERE TO HELP – PLEASE CALL US FOR ADVICE!**



## Bed Climate Comfort System with Remote Control & Bluetooth App



**This device is for residential home use only. It is not intended to be used in commercial, industrial, or human medical settings.**

**READ AND SAVE THESE INSTRUCTIONS**  
**READ CAREFULLY BEFORE ATTEMPTING TO ASSEMBLE,**  
**INSTALL, OPERATE OR MAINTAIN THE PRODUCT DESCRIBED.**  
**PROTECT YOURSELF AND OTHERS BY OBSERVING ALL**  
**SAFETY INFORMATION. FAILURE TO COMPLY WITH**  
**INSTRUCTIONS COULD RESULT IN PERSONAL INJURY AND/OR**  
**PROPERTY DAMAGE!**

**RETAIN INSTRUCTIONS FOR FUTURE REFERENCE.**

**SAVE THESE INSTRUCTIONS**



**USER MANUAL – MODELS 6002NA/V1/V2/ & 7002xx**  
**QUESTIONS? EMAIL US AT [INFO@BEDJET.COM](mailto:INFO@BEDJET.COM) OR CALL 401-404-5250**  
**WE ARE HERE TO HELP – PLEASE CALL US FOR ADVICE!**

## Letter from the President:

Thank you for your purchase of the BedJet. We wanted you to know who we are. Our company is not a division of a massive multinational consumer appliance company or funded by big corporate capital.

We are a true American start-up company based in Rhode Island, full of bright eyed inventors, engineers and gadget nerds who are part of the community of Makers. We simply love creating and sharing awesome new technology and our company was fully self-funded out of our own pockets as well as contributions from our very first customers.


We come from diverse technical backgrounds in the Aerospace, Medical Device, Automotive and Defense industries. My own technical background came out of being an engineer on the NASA space suit program, responsible for some of the cooling and heating and climate control life support components. Our goal is cross-pollination of technologies out of these technologically sophisticated industries into the Bedroom and the creation of devices which are delightful, therapeutic and luxurious.

Along the way we believe it is also possible to build a profitable company while doing right by our customers and showing them love and appreciation. We want to be a company that deals with each of our customers as if they were our neighbors. We also understand that the BedJet is a luxury product and that there are many in the world who cannot afford such luxuries. In recognition of that, a portion of the proceeds from every BedJet goes to charities for the less fortunate, who do not have the benefit of enjoying such products themselves.

We ask that you please give us the opportunity to right any issues you may experience with our product and we promise to put your needs and interests first. If you love your BedJet, please do spread the word for us among your friends and family, as we do not have the marketing budgets of the big consumer appliance companies.

Finally, in support of my personal commitment to your satisfaction, I offer you my own contact information. If our BedJet team or Customer Care associates fail to meet your expectations in any way, please don't hesitate to reach out to me directly. You have my personal commitment to set things right.

With the deepest regard and appreciation for you, our customer,



Mark Aramli  
President & Chief BedJetter


Office of the President:  
[maramli@bedjet.com](mailto:maramli@bedjet.com)  
+1.401.404.5250 ext. 102



## **IMPORTANT INSTRUCTIONS**

**DANGER: TO REDUCE RISKS OF BURNS, ELECTRIC SHOCK, FIRE AND PERSONAL INJURY, THIS PRODUCT MUST BE USED IN ACCORDANCE WITH THE FOLLOWING INSTRUCTIONS**

### **WARNING**

- **DO NOT** place body parts directly into or in front of the air nozzle exhaust when used on high heat setting
- **WARNING – DO NOT** use this heated bed system with an infant, a disabled person, a person with diminished capacity or anyone insensitive to heat, such as a person with very poor blood circulation
- **DO NOT** use with children or persons with mental or sensory handicaps or who cannot understand these warnings
- **DO NOT** use for medical, oxygen, or wet environments
- **DO NOT** cover 

### **PERSONAL INJURY COULD OCCUR**

1. Read all instructions before using this device.
2. **WARNING** – Do not use this heated bed system with any other heated – blanket, comforter, quilt, sheet, mattress pad, mattress, foot warmer, throw blanket or similar heated bedding.
3. Let power cord hang free – Do not place between mattress and foundation. Do not allow the cord to be pinched.
4. Use this device only as described in this manual. Any other use not recommended by the manufacturer may cause fire, electrical shock, or injury to persons.
5. Do not operate device unattended. Turn off or unplug when not in use.
6. **DO NOT OPERATE MORE THAN ONE BEDJET ON SAME BEDROOM AC-POWER CIRCUIT WITHOUT ADJUSTING DUAL MODE SWITCH LOCATED ON REAR OF DEVICE TO “DUAL ZONE ON, LOW POWER” FOR REDUCED POWER, OR DEVICES MAY EXCEED CIRCUIT BREAKER CAPACITY AND CAUSE POWER DISTRUPTION OR ELECTRICAL HAZARD.**
7. This appliance has a polarized plug (one blade is wider than the other). To reduce the risk of electric shock, this plug is intended to fit in a polarized outlet only one way. If the plug does not fit fully in the outlet, reverse the plug. If it still does not fit, contact a qualified electrician. Do not attempt to defeat this safety feature.



**USER MANUAL – MODELS 6002NA/V1/V2/ & 7002xx**  
**QUESTIONS? EMAIL US AT INFO@BEDJET.COM OR CALL 401-404-5250**  
**WE ARE HERE TO HELP – PLEASE CALL US FOR ADVICE!**

8. Always plug this device directly into a wall outlet/receptacle. Never use with an extension cord or relocatable power tap (outlet/power strip).
9. Do not operate this device with a damaged cord or plug or after the device malfunctions or has been dropped or damaged in any manner. Return device to authorized service facility for examination, electrical or mechanical adjustment or repair.
10. To disconnect device, make sure device is not currently operating in heat or cool mode, turn Power Switch to OFF, then remove plug from outlet.
11. Always unplug device when not in regular use. Unplug power cord before servicing or moving the device.
12. Do not insert or allow fingers or foreign objects to enter any ventilation or exhaust opening as it may cause an electric shock, fire, or damage the device. Do not block or tamper with the device in any manner while it is in operation.
13. To prevent a possible fire, do not block air intakes or exhaust in any manner. Do not place unit on soft surfaces, like a bed, where openings may become blocked.
14. This device has hot and arcing or sparking parts inside. Do not use the BedJet in areas where gasoline, paint, or flammable liquids are used or stored. It must NOT be used in potentially dangerous locations such as flammable, explosive, chemical-laden or wet atmospheres. This device is intended for residential bedroom use ONLY.
15. This device is not intended for use in wet or damp locations. This device is **NOT INTENDED** for use in bathrooms, laundry areas and similar indoor locations. Do not use this heater in the immediate surroundings of a bath, a shower or a swimming pool. Never locate the device where it may fall into a bathtub or other water container. Do not immerse BedJet in water.
16. This device is not intended for use as a room air heater.
17. Do not use device outdoors.
18. Keep the cord away from heated surfaces.
19. Do not operate where aerosol (spray) products are being used or where oxygen is being administered.
20. Do not run cord under carpeting. Do not cover cord with throw rugs, runners, or similar coverings. Do not route cord under furniture or appliances. Arrange cord away from traffic area and where it will not be tripped over.
21. Check your BedJet cord and plug connections:
  - a) Faulty wall outlet connections or loose plugs can cause the outlet or plug to overheat. Be sure the plug fits tight in the outlet.
  - b) Heaters draw more current than small appliances, overheating of the outlet may occur even if it has not occurred with the use of other appliances.



**USER MANUAL – MODELS 6002NA/V1/V2/ & 7002xx**  
**QUESTIONS? EMAIL US AT INFO@BEDJET.COM OR CALL 401-404-5250**  
**WE ARE HERE TO HELP – PLEASE CALL US FOR ADVICE!**

- c) During use check frequently to determine if your plug outlet or faceplate is HOT!
  - d) If so, discontinue use of the heater and have a qualified electrician check and/or replace the faulty outlets.
22. For household use only
23. Children of less than 3 years should be kept away unless continuously supervised. Children aged from 3 years and less than 8 years shall only switch on/off the appliance provided that it has been placed or installed in its intended normal operating position and they have been given supervision or instruction concerning use of the appliance in a safe way and understand the hazards involved.
24. Children aged from 3 years and less than 8 years shall not plug in, regulate and clean the appliance or perform user maintenance.
25. Children should be supervised to ensure that they do not play with the appliance.
- 26. CAUTION — Some parts of this product can become very hot and cause burns. Particular attention has to be given where children and vulnerable people are present.**
27. Heater must not be located immediately below a socket outlet.
28. If the supply cord is damaged, it must be replaced by the manufacturer, its service agent or similarly qualified persons in order to avoid a hazard.
29. This appliance is not intended for use by persons (including children) with reduced physical, sensory or mental capabilities, or lack of experience and knowledge, unless they have been given supervision or instruction concerning use of the appliance by a person responsible for their safety.

**WARNING: REDUCE THE RISK OF FIRE OR ELECTRIC SHOCK – DO NOT USE THIS DEVICE WITH ANY SOLID STATE SPEED CONTROL DEVICES.**

**SAVE THESE SAFETY INSTRUCTIONS**



**USER MANUAL – MODELS 6002NA/V1/V2/ & 7002xx**  
**QUESTIONS? EMAIL US AT INFO@BEDJET.COM OR CALL 401-404-5250**  
**WE ARE HERE TO HELP – PLEASE CALL US FOR ADVICE!**

## **THIS DEVICE IS A DOUBLE INSULATED PRODUCT: SERVICING OF DOUBLE-INSULATED PRODUCTS**

In a double-insulated product, two systems of insulation are provided instead of grounding. No grounding means is provided on a double-insulated product, nor is a means for grounding to be added to the product. Servicing a double-insulated product requires extreme care and knowledge of the system, and is to be done only by qualified service personnel. Replacement parts for a double-insulated product must be identical to the parts they replace. A double-insulated product is marked with the words DOUBLE INSULATION or DOUBLE INSULATED. The symbol (square within a square) is also able to be marked on the product.

## **MANUFACTURER INFORMATION:**

**BEDJET LLC**  
**217 Goddard Row**  
**Newport, RI 02840 USA**  
**Phone: +1-401-404-5250**  
**Email: info@bedjet.com**



## Product Overview

The patented BedJet® is a forced air cooling, heating and climate comfort system designed just for your bed at home. BedJet technology utilizes a gentle flow of air blown directly into your bedding to provide rapid cooling and heating comfort. The BedJet® attaches as an accessory device to any size bed, any type mattress and works with your existing bedding. The BedJet® base unit is intended to be installed underneath the bed, or at the foot of the bed. The BedJet® product cools and heats your bed while keeping all electricity safely out of your bed where it belongs. Convenient bedside controls include a RF remote control and a Bluetooth connected smartphone App, available for android and iPhone devices.

Cooling is achieved by powered ventilation of the bed, utilizing fresh room temperature air to disperse accumulated body moisture and heat out from under the sheets. Cooling mode is most effective when the room ambient air temperature is below 79 °F(27°C). BedJet® cooling is not a replacement for room air conditioning in extremely hot climates and may not be highly effective if room ambient temperatures are over 80 °F(27°C).

Heating of the airflow in the base unit is achieved via a unique patent pending ceramic stone heating element. These advanced technology ceramic stone heating elements have been specially engineered to gently heat the air flow while maintaining internal element surface temperatures below the burning flashpoint of air born dust and lint. This prevents any noticeable “electric heater” odor from the BedJet®, which is commonly experienced with ordinary room space heaters using electric coils and fans.

The BedJet’s specially engineered ceramic stone heating element also represents the highest level of technological safety for an air heating device. Under any possible malfunction or misuse condition, the ceramic stones will never get hot enough to melt the BedJet casing or cause ignition of flammable materials. The heated air outlet temperatures are safe, about the same temperature as your household HVAC register and less than the cabin heat temperature of your automobile. While warmth will be felt in the air delivery hose, the external BedJet case is cool the touch under any heat setting.

These technological innovations were developed by the BedJet® engineering team to ensure the highest level of safety for our product and its new home as an extension of your bed.



## Pre-Installation Checklist

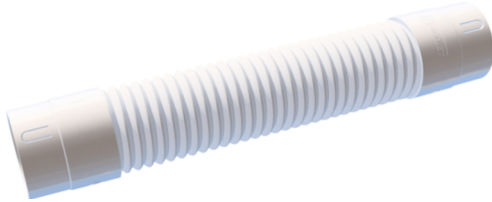
Before attempting installation of the BedJet, please verify the following standard parts list from your BedJet package:



Adjustable height mattress mount with qty. 2 pre-installed sheet clamps and qty. 4 height extending links



Air Nozzle



Air Hose with fabric liner, stretchable, compressible and bendable



BedJet base unit



Radio wireless remote control with A23 alkaline battery





**USER MANUAL – MODELS 6002NA/V1/V2/ & 7002xx**  
**QUESTIONS? EMAIL US AT INFO@BEDJET.COM OR CALL 401-404-5250**  
**WE ARE HERE TO HELP – PLEASE CALL US FOR ADVICE!**

***Proper Assembly Required:***

The BedJet is required to be installed onto a bed for proper operation. All parts included are required to be fully assembled and installed onto the BedJet as part any operation. Do not operate the BedJet without the included Air hose and Air Nozzle installed onto the BedJet. Do not attempt to use the BedJet with air delivery accessories or air delivery components not approved or supplied by BEDJET, LLC. Install only qualified air delivery components supplied by BEDJET, LLC onto the BedJet.

***Bedding Requirements & JetConvect™ Theory of Operation:***

The BedJet JetConvect™ air technology sends air directly into your sleeping layer. The BedJet requires a typical top sheet or comforter to be used in bed for proper cooling and warming operation. A quality top sheet or comforter must always be used to help trap and distribute the BedJet air flow within the bed. Requirements for the top sheet or comforter are very simple, just use any bedding material type (cotton, cotton blends, microfiber, etc) with a 250thread count weave or higher. Alternatively the BedJet AirComforter™ accessory may be used as a replacement for a typical top sheet or comforter (see Dual Zone Installation).

Use of loosely knit low quality top sheets with thread count below 250, or loose knit top sheet weaves such as jersey knit or flannel, or performance “cooling” top sheets will result in sub-optimal BedJet experience. Use of loose knit blankets with no top sheet or no comforter will result in sub-optimal experience. **Using this type of bedding will allow the BedJet air to escape at the bottom of the bed near the nozzle and only cool/warm your feet instead of the whole bed.**

***Air Delivery Preferences:***

The BedJet JetConvect™ technology warms and cools via quiet injection of air into your bedding. Some users enjoy the feeling of ventilation and movement air around their body and consider it delightful. Other users may only wish to feel cooled or warmed and prefer to minimize the movement of air under the sheets or around the body.

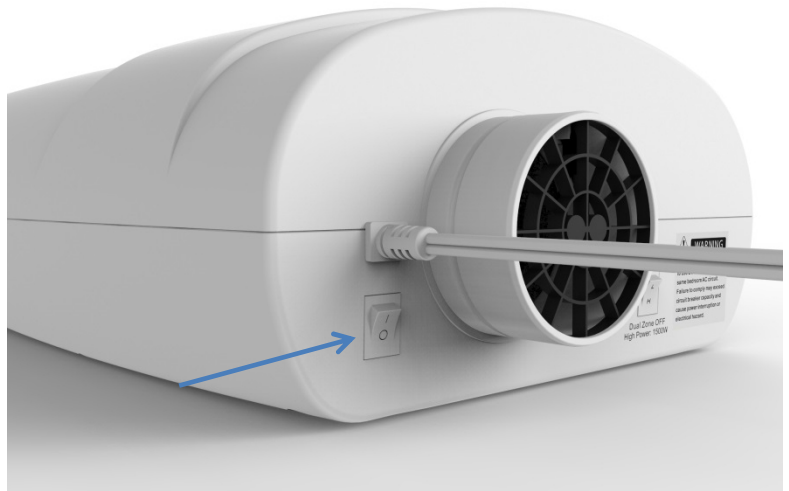
The BedJet accommodates both types of operation, depending on user preference. See Cooling & Heating sections for more detail.



# System Overview

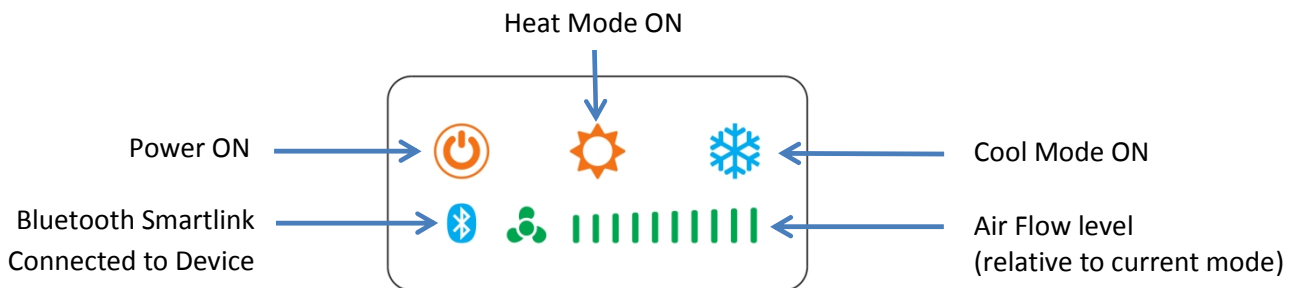
## ***BedJet Power Switch***

The ON/OFF power switch is located directly below the power cord at the rear of the unit to the left of the air exhaust port. Plug the unit in, switch the unit on and within 5 seconds a single beep should be heard and the orange Power ON LED on the BedJet Status Display (see below) will light. This signifies the BedJet is in stand-by mode and ready to accept commands from the wireless remote control or link to a Bluetooth enabled smart device. The BedJet uses very little power when in standby mode.



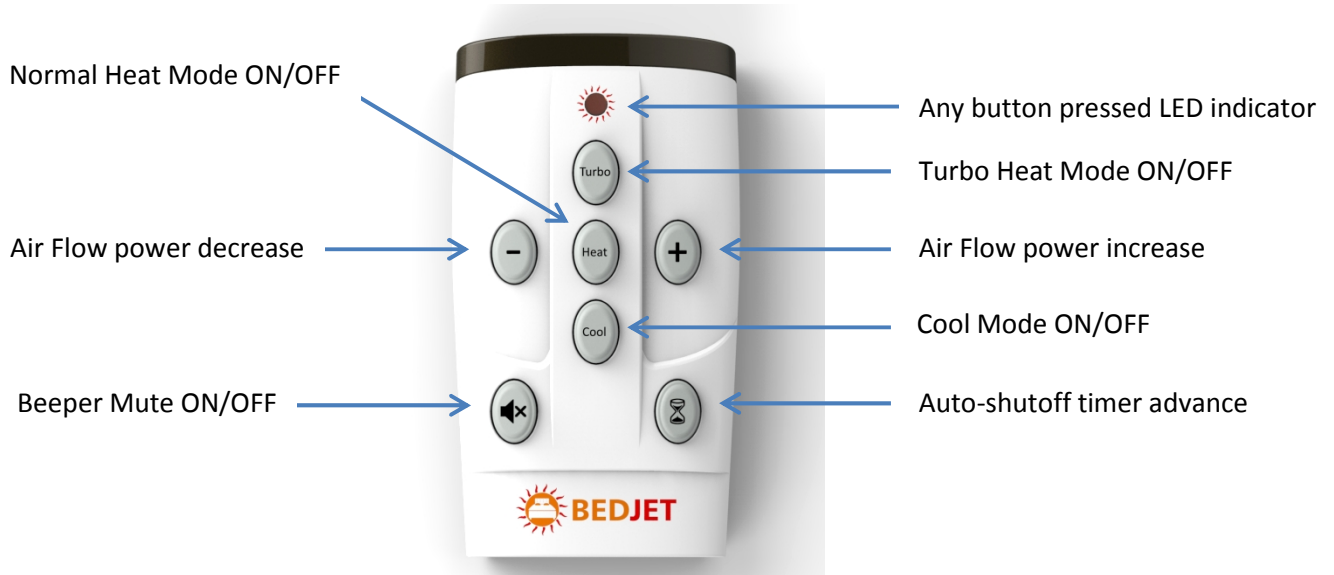
## ***BedJet Status Display:***

Located on top of the BedJet, the Status Display gives information on current mode setting of the BedJet. This is not a control panel. Controlling the BedJet is performed via the wireless remote or Bluetooth smartphone/tablet App.



**USER MANUAL – MODELS 6002NA/V1/V2/ & 7002xx**  
**QUESTIONS? EMAIL US AT INFO@BEDJET.COM OR CALL 401-404-5250**  
**WE ARE HERE TO HELP – PLEASE CALL US FOR ADVICE!**

***BedJet Wireless Remote Control:***



**REMOTE CONTROL OPERATION OF BEDJET:** The wireless remote control and Bluetooth smart device App are the only methods of commanding operation of the BedJet. The BedJet main power switch needs to be ON and the Power ON LED light on main display lit for the remote control or Bluetooth device to operate the BedJet. There are no external operating mode buttons on the BedJet base unit.

**BEDJET REMOTE CONTROL SYNC TO BEDJET:** The wireless remote control needs to be paired to your BedJet in order to correctly operate. This is normally done at the factory prior to delivery. If BedJet is powered on (verified by Power LED on BedJet display) and wireless remote control buttons are pressed (verified by LED indicator on remote) but the BedJet does not activate, then re-pair the remote control to BedJet with the following procedure:

To pair your remote control to your BedJet, make sure BedJet is powered OFF for 10 seconds. Turn BedJet switch ON while simultaneously pressing and holding the COOL Button on remote control until the BedJet Power ON indicator lights. BedJet will make 3 fast beeps to indicate successful pairing to remote. The pairing is permanent until a new remote control is paired.

**BATTERY:** The battery is an A23 type alkaline battery, commonly available and used frequently in garage door opener remote controls. When needing replacement, the battery may still light the LED on remote but be too weak for transmit. If remote control has previously worked properly and then stops functioning, replace the battery.



**USER MANUAL – MODELS 6002NA/V1/V2/ & 7002xx**  
**QUESTIONS? EMAIL US AT INFO@BEDJET.COM OR CALL 401-404-5250**  
**WE ARE HERE TO HELP – PLEASE CALL US FOR ADVICE!**

### ***BedJet Dual Zone Switch***

The BedJet Dual Zone switch sets the maximum allowable air flow and power utilized by the BedJet in any heat mode. In Turbo Heat Mode, the BedJet can consume a large amount of power for an electrical appliance, up to 1440 watts.



**Any installation with two BedJet devices on the same household AC branch circuit or two BedJets on the same bed must have the Dual Zone Switch set ON to LOW Power 800W, in order not to exceed AC circuit Amp capacity.** The Dual Mode ON Low Power setting reduces the available airflow and heating power by approximately 50% in the Turbo heat mode, and 20% in regular heat mode in order that two BedJet’s being used simultaneously on the same AC bedroom circuit will not exceed AC circuit capacity. This is still plenty of power to warm the bed quickly.

Installations where only one BedJet is used on the same household branch AC Circuit and one BedJet device is installed on the bed should set the Dual Zone Switch OFF to HIGH power 1500W to enjoy the full power heating comfort of the system. **Users with single or twin size beds should set the Dual Zone Switch to LOW Power.**

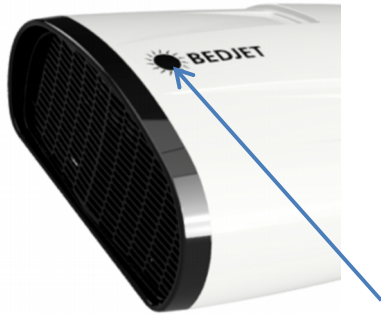
Installations where only one BedJet is used on the same household branch AC Circuit and one BedJet device is installed on the bed should set the Dual Zone Switch OFF to HIGH power 1500W to enjoy the full power heating comfort of the system. **Users with single or twin size beds should set the Dual Zone Switch to LOW Power.**



**WARNING:** Failure to comply with the correct Dual Zone Switch setting with more than one BedJet installed on the same AC branch circuit may result in overloaded electrical circuit, electrical hazard or personal injury. Never use more than one BedJet on the same household AC circuit or same bed without setting Dual Zone switch to LOW Power.



## ***Maintenance***



The only maintenance required for the BedJet is periodic inspection and cleaning of the lifetime washable air intake filter. The lifetime washable intake filter is designed to keep dust, lint, pet hair, etc. out of the BedJet air flow stream.

**Inspect and clean the filter every 3 months or when visually dirty (or more frequently if shedding pets are near or around BedJet):** Press the round BedJet logo and pull air intake grill open to access filter, remove the mesh filter and clean under household running water. Reinstall filter when dry and close the air intake grill until it snaps back in place.

## **Installation: Single Zone BedJet**

Use the following instructions for a single zone BedJet installation. A single zone BedJet installation is a single BedJet installed on any size bed, resulting in heating or cooling of the entire bed as a single temperature zone. Settings on medium or low may allow only half sections of the bed to be heated or cooled if desired (see Step #3). All required items and components for the single zone installation are included in the BedJet box.

### ***BedJet Installation Checklist:***

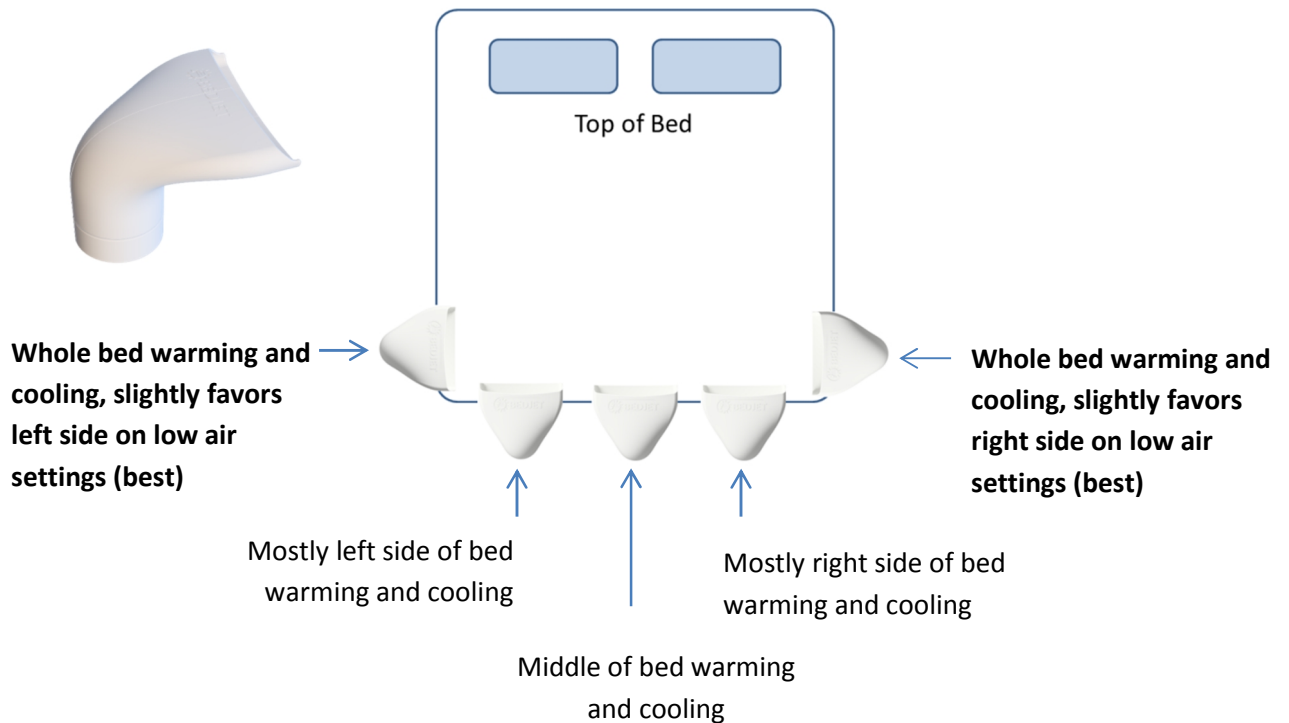
Before installing BedJet under the Bed, assemble all parts and become familiar with BedJet operation while the Status Display is still easily viewable:

- 1) Make sure battery is installed in remote control, the amber LED on remote control should turn on when any button is pressed. Weak, flickering LED indicates low battery.
- 2) **Adjust the BedJet Dual Mode Switch according to your installation type (see page 12). THIS IS VERY IMPORTANT.**

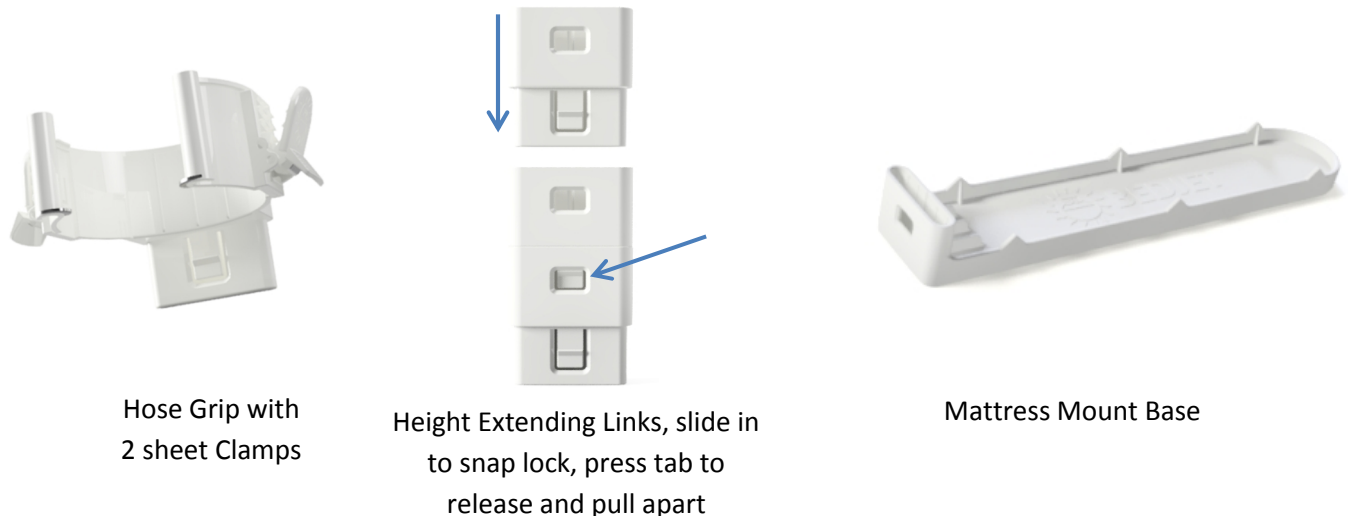


**USER MANUAL – MODELS 6002NA/V1/V2/ & 7002xx**  
**QUESTIONS? EMAIL US AT INFO@BEDJET.COM OR CALL 401-404-5250**  
**WE ARE HERE TO HELP – PLEASE CALL US FOR ADVICE!**

- 3) Determine best Air Nozzle location near the bottom of the bed per your personal heating and cooling zone preferences on the chart below and limitations of your bedframe. It's good to experiment with these over a few nights to learn what works best for you. **For installations using AirComforter, please consult instructions found in the AirComforter package, available Nozzle locations will be different than shown below.**



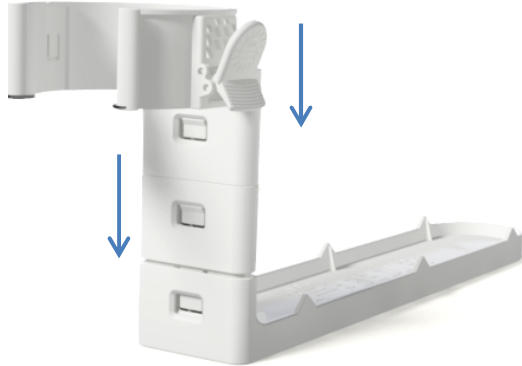
- 4) Locate parts for adjustable Hose Mattress Mount assembly. The adjustable Hose Mattress Mount comes in multiple pieces:





**USER MANUAL – MODELS 6002NA/V1/V2/ & 7002xx**  
**QUESTIONS? EMAIL US AT INFO@BEDJET.COM OR CALL 401-404-5250**  
**WE ARE HERE TO HELP – PLEASE CALL US FOR ADVICE!**

- 5) Assemble Hose Mattress Mount using the Height Extending links as shown below. All parts should snap together, thicker mattresses will require more Height Extender links:



- 6) Slide the Mattress Mount base under your mattress directly underneath the location identified in step #3 for the Air Nozzle. The Mattress Mount will be used to secure the Air Hose and Air Nozzle assembly against the side of the bed. Slide the Mattress Mount base as deeply as possible under the mattress until the Mattress Mount is flush against the mattress.



- 7) Assemble Air Nozzle onto the Air Hose. Stretch and compress the Air Hose, note how it can be expanded, contracted and bent to retain any desired shape.

- 8) **Push the fabric section of Air Hose** onto Mattress Mount Hose Grip. Grip will stretch open to accept the hose. Remove or add Mattress Mount Height Extending Links to adjust height of the Hose Grip so that bottom of the Air Nozzle rests on the top of the mattress. The Hose Grip can be flush against the plastic hose cuff or very close to it – both installation methods shown in photo are good. When finished, the Air Nozzle should be resting on and project onto the mattress surface. Add Height Links if Air Nozzle flops off mattress too easily.



- 9) Place BedJet on the floor near the bottom of the bed directly beneath the Mattress Mount, the intake should be facing towards the bed. Assemble the Air Hose onto air output port of BedJet.



**USER MANUAL – MODELS 6002NA/V1/V2/ & 7002xx**  
**QUESTIONS? EMAIL US AT INFO@BEDJET.COM OR CALL 401-404-5250**  
**WE ARE HERE TO HELP – PLEASE CALL US FOR ADVICE!**

10) If using the AirComforter, please consult the instructions in the AirComforter package for installation of the Air Nozzle into the AirComforter sheet. If you are using your own sheets, cover the Air Nozzle with your sheets or comforter. The Air Nozzle must be covered by a sheet or comforter in order to distribute the air throughout the bed. Twin sheet clamps are located on Mattress Mount to hold your sheets in place over the nozzle so they are not pulled off easily when turning over in bed. If bedding sheets are not typically tucked in around the nozzle, the sheet clamps are highly recommended to be used.



11) Plug BedJet in AC power outlet (do not use power strip) and switch on. Power switch is located directly below power cord. BedJet makes single beep on successful power ON, and the remote control can now be used.



12) The Remote Control should already be synchronized with BedJet on delivery. However, if pressing remote control center buttons does not activate BedJet after power ON, try synchronizing the Remote Control per instructions on page 11. If still not working, replace the battery.

13) Familiarize yourself with turning on and off the various operating modes while the Status Display of BedJet is visible before the BedJet is pushed under the Bed.

14) The ideal BedJet final installation location is under the bed. This product is designed to be an extension of your bed and has been electrically approved as safe for this installation. The BedJet requires 7 inches clearance and will fit under nearly all beds with standard frames. Some bedframes with low hanging side rails may look like they cannot fit the BedJet underneath, but this is just the side rail and the under mattress area may still have 7 inches height clearance. In these cases, the bed frame may be lifted up and the BedJet placed underneath. As long as the mattress or frame does not rest on the BedJet and the 3" hose can clear the low side rail, the installation is acceptable.



15) When installing under the bed, adjust the location of the BedJet exhaust port to be as close as possible to the Air Nozzle. Best location is for the exhaust port to be directly under the Air Nozzle so that it can be reached with only a single 90 degree bend in hose. The best setup will minimize the length of Air Hose and minimize the number of bends.





**USER MANUAL – MODELS 6002NA/V1/V2/ & 7002xx**  
**QUESTIONS? EMAIL US AT [INFO@BEDJET.COM](mailto:INFO@BEDJET.COM) OR CALL 401-404-5250**  
**WE ARE HERE TO HELP – PLEASE CALL US FOR ADVICE!**

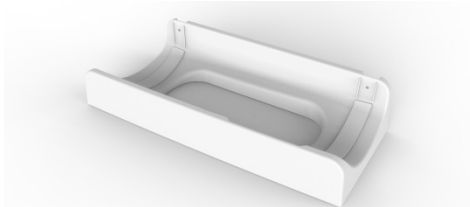
Compress excess length in the Air Hose so that only the shortest length needed is used. Compress the hose length not needed nearest the BedJet exhaust, and leave the hose completely expanded going to the Air Nozzle. Straighten the Air Hose as much as possible for the most efficient operation.

**HELP – WILL IT WORK WITH MY ARTICULATED BED FRAME?**

The BedJet is articulated bed frame approved. It will work fine underneath adjustable bed frames, provided care is taken to make sure that the BedJet and Air Hose are installed in a location where the full range of frame articulation will not crush either component. This may require fully extending the Air Hose to move BedJet further away from the Air Nozzle/Mattress mount location than shown here.

**HELP – CAN'T FIT THE BEDJET UNDER THE BED?**

For situations where the BedJet cannot fit under the bed, we offer the vertical mount BedJet stand that allows you tuck the BedJet neatly against the foot of the bed, out of the way and taking up a tiny 6.5" by 17" footprint. The accessory can be ordered from [bedjet.com](http://bedjet.com):



**HELP – POWER CORD ISN'T LONG ENOUGH?**

For situations where the BedJet power cord cannot conveniently reach a power outlet, we offer users a low cost 4-foot Air Hose extension, giving 8-feet total hose length. The Air Hose extension will allow you to place the BedJet nearly anywhere under the bed or around the bed to be closer to the power outlet. You can order the hose extension at [www.bedjet.com](http://www.bedjet.com)

**PLEASE EMAIL AT [INFO@BEDJET.COM](mailto:INFO@BEDJET.COM) OR CALL US WITH ANY  
INSTALLATION RELATED QUESTIONS. WE ARE HERE TO HELP!**



## BedJet Operating Modes

**Note: Basic operating functions are supported by the standard wireless remote control. Utilize the Bluetooth linked BedJet App from your smartphone or tablet computer to unlock advanced features.**

- The BedJet main power switch (under the power cord) must be turned ON for the remote control to function. Once the power switch is ON, the BedJet will beep once to indicate successful boot-up of the internal microcontroller. The BedJet is now in standby mode.
- Activate the BedJet by pressing the desired Turbo, Heat or Cool mode button on the remote once. A single beep confirms an ON command.
- Deactivate BedJet into standby by pressing the same mode button a second time. A double beep confirms a mode OFF command.
- While active in any given cooling/heating mode, pressing a different mode button will switch cooling/heating modes without shutoff of the BedJet. The BedJet will beep once to indicate the mode change. Please note when changing from heating to cooling mode it will take some number of minutes for the air exhaust temperature to become cool.
- Adjust the Air Flow using the “+” or “-“ buttons on the remote to increase or decrease the Air Flow to the bed. More Air Flow means more heating/cooling, less Air Flow means less heating/cooling power. The BedJet will beep once for each increase/decrease. Each increase/decrease increments 5% of allowable Air Flow range for each mode, thus pressing 20 times gets you from full power to lowest power for any given mode. Press and hold the buttons for rapid increase or decrease.
- Press the Auto-Shutoff Timer Advance button to increase the time left on the Auto-Shutoff function above the default time settings (see table below).
- Press the Mute button on remote control to silence all beeps. Press again to reactivate beep acknowledgement of remote commands.



**USER MANUAL – MODELS 6002NA/V1/V2/ & 7002xx**  
**QUESTIONS? EMAIL US AT INFO@BEDJET.COM OR CALL 401-404-5250**  
**WE ARE HERE TO HELP – PLEASE CALL US FOR ADVICE!**

***Operating Mode Summary & Auto-Shutoff Times***

Remote Control Mode	Air Flow Adjustable Range Specific to Mode	Air Output Regulated Temperature	Auto-Shutoff Default Time	Auto-Shutoff Timer Remote Control Button	Max.Increased Auto-Shutoff Time
<b>Turbo (Heat)</b>	Very High to Moderate Air	109 °F 43 °C	5 minutes	⌚ +1 minutes	10 minutes
<b>Heat via wireless remote</b>	Moderate to Very Low Air	104 °F 40°C	20 minutes	⌚ +20 minutes	1 hour @ >50% Air 2 hours @ <50% Air 4 Hours @ < 20% Air
<b>Heat via Bluetooth smart remote App*</b>	Moderate to Very Low Air	72 to 104 °F 29 to 40°C	20 minutes	⌚ +20 minutes	Up to 12 hours*
<b>Cool</b>	Moderate to Very Low Air	Room temperature from floor	10 hours	⌚ 30 minutes	12 hours

\*Please note 12-hour auto-shutoff operation on warming mode requires use of the BedJet Bluetooth App on your smartphone or tablet

***Cooling Mode Information & Tips for Better Enjoyment***

Cooling mode has a default Auto-Shutoff time of 10 hours. The first press of the hourglass button on the wireless remote will reduce the default Auto-Shutoff time to 30 minutes and then each additional press of the hourglass button shall increase time by an additional 30 minutes.

The BedJet cools you via powered ventilation of fresh ambient temperature air directly into the bed. This powered ventilation gently wicks away the body heat and body moisture that gets trapped in the bed by your mattress and bed covers. This method of in-bed cooling has been demonstrated by infra-red cameras to provide the most rapid removal of body heat and body moisture from a bed of any product available on the market today.

BedJet cooling is not a replacement for zero air conditioning in extremely hot or humid bedroom environments, but will enable reduced air conditioning thermostat settings to save money on utility bills. **Ambient bedroom air temperature must generally be below 79 °F (26 °C) for cooling mode to be effective.**

**For night sweats, also try using the BedJet App to set the BedJet heat mode to its lowest temperature settings. For most this will provide some cooling while also helping dry the bed.**



**USER MANUAL – MODELS 6002NA/V1/V2/ & 7002xx**  
**QUESTIONS? EMAIL US AT INFO@BEDJET.COM OR CALL 401-404-5250**  
**WE ARE HERE TO HELP – PLEASE CALL US FOR ADVICE!**

***HELP – FEET TOO COLD?***

Try using Heat mode at the lowest temperature settings, starting at 72 degrees or more (using “Heat Set” menu in App). This will provide gentler cooling. Try locating the Air Nozzle at different locations around the bed. Try placing the Air Nozzle ABOVE your top sheet, and then placing another top sheet or comforter over the Air Nozzle, creating a sandwich layer for the air to flow above your body but not in your sleep layer. The very best solution if you experience cold feet is use of the AirComforter. It dramatically improves the distribution of air away from your feet. Of course, there are always socks.... 😊

***HELP – DON’T LIKE FEELING THE AIR BLOWING UNDER THE COVERS?***

Don’t locate the Air Nozzle to blow directly into your sleeping layer (under your top sheet). Use the same solution as above, run the Air Nozzle above your top sheet instead of below it and make sure you have another tightly knit layer of bedding above the Air Nozzle to guide the air through the sandwiched layer. An even better solution is use of the AirComforter, which dramatically improves distribution of the air and reduces the feeling of air movement.

***HELP - COOLING FELT ONLY ON YOUR FEET AND NOT ON BODY?***

The BedJet requires a good quality top sheet or comforter of generally 250 thread count or higher to keep the cooling air trapped and circulating in the bed. This condition results from use a top sheet that is not compatible with the BedJet, or use of no top sheet at all and just a loose knit blanket. At 100% airflow your bed should have nearly all of your bedding ballooning slightly off the bed and air flow will be felt exiting at the very top of the bed from under the top sheet. You should be able to feel the cooling air on your torso. If this is not occurring, then your top sheet is too breathable or too low a thread count. Performance “cooling” sheets, highly breathable loose knit sheets, jersey knit type sheets and blankets without any top sheet let all the air out at the bottom of the bed before it can circulate to the top of bed properly. **Solution: change top sheet types or utilize the BedJet AirComforter.**

**Tips for Better Cooling Enjoyment**

- More Air Flow isn’t always cooler -- experiment with the full range of Air Flow to find the perfect settings for your unique set of bedding.
- Experiment with different Air Nozzle locations to see what works best for you
- Expect the sheets to balloon up a bit on high airflows. If this bothersome, place a pillow half in and half out of the sheets at the top of the bed. This will “unseal” your bedding from the air and allow it to deflate back down.
- **For customers primarily interested in cooling performance, the AirComforter accessory is a highly recommended BedJet add-on that improves the cooling mode performance significantly**
- Always place another layer of bedding over the AirComforter (blanket or comforter or quilt), it performs better with some weight on it



**USER MANUAL – MODELS 6002NA/V1/V2/ & 7002xx**  
**QUESTIONS? EMAIL US AT INFO@BEDJET.COM OR CALL 401-404-5250**  
**WE ARE HERE TO HELP – PLEASE CALL US FOR ADVICE!**

## ***Heating Mode Information & Tips for Better Enjoyment***

Basic heating mode functions are available via the wireless remote control. Operation using only the wireless remote control is limited to 1 to 4 hours continuous warming as a safety feature (depending on Air Flow setting, set page 19). Utilize the Bluetooth smart remote App with a smartphone or tablet to activate advanced features including:

- Warming auto-shutoff time extension to 12 hours using lower temperature settings
- Customized warming air temperatures(72 to 104 °F)
- Presets for night-sweat drying modes
- See Bluetooth App instructions for more information.



### **Turbo Heat:**

This mode is best used as a pre-heater for warming your bed very quickly before getting into bed, or for single short bursts while in bed. Turbo Heat pumps the maximum amount of heat into the bed with the maximum amount of airflow and can warm the temperature of your bedding by up to 30 °F (17°C) above ambient in just five minutes. **This mode has a very short default Auto-Shutoff time of 5 minutes**, as the warmth generated and noise levels are too powerful for extended use or comfortable sleeping. Each press of the hourglass button on the wireless remote will extend Auto-Shutoff by 1 additional minute, to maximum of 10 minutes.

- Do not continuously re-cycle the BedJet into Turbo-Heat mode while in bed.
- Do not place body parts directly into or in front of Air Nozzle in TurboHeat mode
- **TURBO HEAT MODE IS SOFTWARE LIMITED TO 10 MINUTES OPERATION OUT OF EVERY 30 MINUTES. ATTEMPTS TO CONTINUE OPERATION BEYOND THIS LIMIT WILL CAUSE AUDIBLE BEEPING AND BEDJET WILL DEFAULT TO REGULAR HEAT MODE.**

### **Heat (Normal)**

This mode is suitable for gentle warming over extended periods and can be used while sleeping. This mode has a default Auto-Shutoff time of 20 minutes. Each press of the hourglass button on the wireless remote will extend Auto-Shutoff by an additional 20 minutes, to a maximum of 1 hour. For Auto-Shutoff heating operation extended to a full 12 hours, you must use custom Heat Set mode on Bluetooth App using your smartphone or tablet. The Bluetooth App is the only method to operate the BedJet in an all-night 12 hour heating mode.



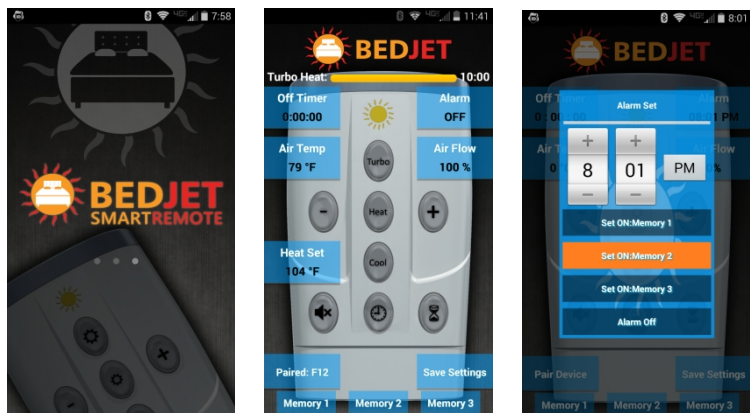
**USER MANUAL – MODELS 6002NA/V1/V2/ & 7002xx**  
**QUESTIONS? EMAIL US AT INFO@BEDJET.COM OR CALL 401-404-5250**  
**WE ARE HERE TO HELP – PLEASE CALL US FOR ADVICE!**

**Tips for Better Warming Enjoyment:**

- 1) Try using the Turbo-Heat mode as a pre-heater five to ten minutes before you get into bed. Turbo-heat can make your bedding feel like it just came out of the dryer in only 3 minutes. Get in with as few clothes on as you can and enjoy the cuddly warmth directly on your skin. Don't be shy and wiggle around, it feels great!
- 2) Hate getting out of a warm shower on cold winter days? Dry off briefly, or don't dry off at all – but in either case, run into the bed, turn on Turbo-Heat mode and enjoy the powerful dry heating luxury. It's like giant hair dryer for your whole body! Trust us on this one, it sounds silly but it feels wonderful.
- 3) The highest settings of normal Heat will become too warm for most people after some period of time in the bed. Experiment with lower settings and work your way up to what feels comfortable.
- 4) Just like your home central HVAC forced air heat, the BedJet heating modes can lower the local humidity in the bed. For individuals who suffer from dry itchy skin in the winter, extended duration use of the BedJet heating while in bed may contribute to the dryness. Use moisturizer (your partner will love your soft skin!) or better yet, use the BedJet as a toasty pre-heater before getting in bed, or short burst heat when needed while in bed, rather than for extended periods while you sleep. **Sleep science says that you achieve deeper sleep by not having long-duration external heat sources in the bed while trying to sleep.**

 **Bluetooth Smart Remote App: USE THE APP & UNLOCK ADVANCED FUNCTIONS NOT AVAILABLE WITH STANDARD WIRELESS REMOTE**

The BedJet comes standard with integrated Bluetooth 4.0 for connection to Android and iPhone smart devices. The BedJet Smart Remote App provides more intelligent remote control capabilities than the standard wireless remote. These include one-touch memory functions, a programmable turn-on time setting, customizable heat temperatures and



extension of auto-shutoff heat mode times to a full 12 hours. You can even program the BedJet to wake you up in the morning with a cool blast of air! Real time information is displayed on the App on Air Flow power setting, Air Flow temperature, and time remaining to Auto-shutoff.





**USER MANUAL – MODELS 6002NA/V1/V2/ & 7002xx**  
**QUESTIONS? EMAIL US AT INFO@BEDJET.COM OR CALL 401-404-5250**  
**WE ARE HERE TO HELP – PLEASE CALL US FOR ADVICE!**

**Android Instructions:**

Download the BedJet App from the Google Play Store. Once the BedJet is powered on, run the BedJet App and press the blue window on the bottom left of main screen that says “Pair”. On following screen press Search, the local BedJet device should show up on the list. Press the device ID and the pairing should begin. The Bluetooth symbol on the BedJet Status Display will light once the Bluetooth link is active with your smart device.

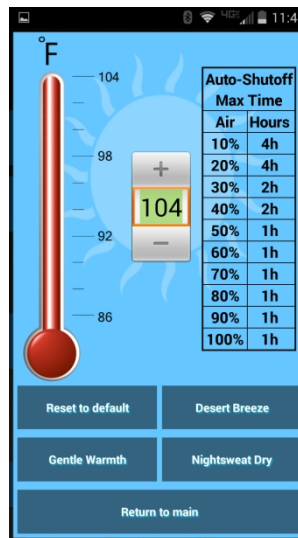
**iOS Instructions (iPhone, iPad, iPod Touch):**

Download the BedJet App from the iTunes Store. Once the BedJet is powered on, run the BedJet App and press the blue window on the bottom left of main screen that says “Pair”. On following screen press Search, the local BedJet device should show up on the list. Press the device ID and the pairing should begin. The Bluetooth symbol on the BedJet Status Display will light once the Bluetooth link is active with your smart device. **FOR APPLE PRODUCTS, BLUETOOTH PAIRING TO THE BEDJET MUST BE DONE VIA THE BEDJET APP, THE BLUETOOTH CONNECTION WILL NOT PAIR IF YOU TRY TO CONNECT THROUGH THE BLUETOOTH GENERAL CONTROL PANEL OF YOUR APPLE SMARTPHONE OR TABLET.**

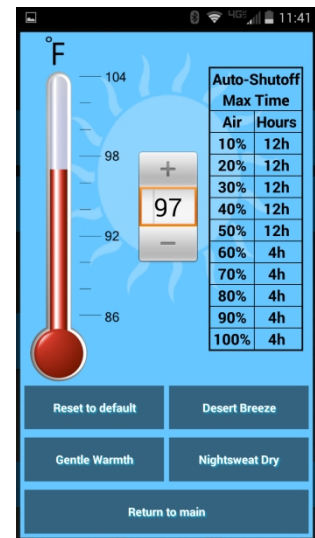
**Accessing 12-Hour Auto-Shutoff Heating Time with the App:**



1) Press “Heat Set” while heat mode is on



1) Lower temperature set point



3) Available auto-shutoff times will increase in table



## BedJet v2 Model

**V2** Sleep-Inducing  
Biorhythm  
Temperature  
Technology

The BedJet v2 incorporates the same cooling and heating features as the standard BedJet, but with upgraded intelligence and improved features accessed exclusively through the Bluetooth smart device App. BedJet v2 models are labeled with an identifying v2 sticker. Additional features include:

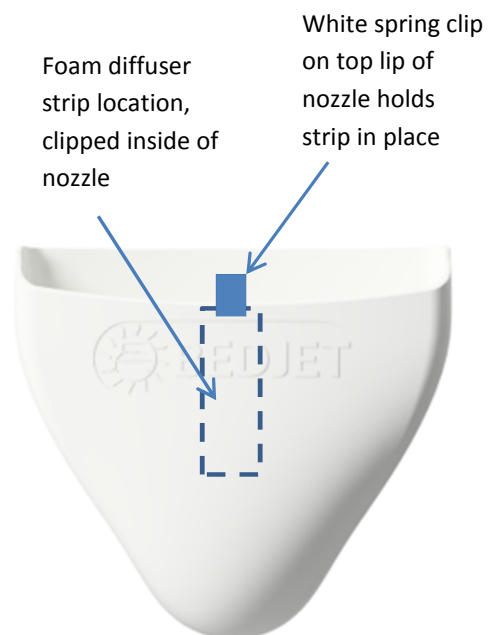
- Programmable heating/cooling settings vs. time, allowing you to create custom sleep temperature profiles over the course of the night and into the morning
- Ambient bedroom temperature sensing and programmable actions based on room temp.
- BedJet v2 operating firmware can be updated via smartphone link to keep your BedJet up to date with the latest improvements.

**Upon first pairing, BedJet Bluetooth App will identify your BedJet as a v2 model and provide instructions on how to utilize the biorhythm sleep temperature technology features.**

## Aromatherapy Accessory Kit

Optional aromatherapy diffuser kits are available for the BedJet. These kits provide a convenient means for diffusing essential oils into the air exhaust of the BedJet. The aromatherapy kit consists of Qty. 8 essential oil diffuser strips (1" x 3" long, black foam) and a spring clip for mounting the diffuser strips inside of the BedJet air nozzle.

- 1) Place 3-5 drops of essential oil into the **very middle** of a 1 inch by 3 inch long foam diffuser strip. You can adjust this to personal preference, but do not soak the strip.
- 2) Clip the diffuser strip to the inside of the air exhaust nozzle per the diagram right (see dashed lines), using the clip to clamp the strip to the top lip of the nozzle. The diffuser strip should hang freely inside the nozzle.
- 3) Turn on BedJet air. Best essential oil diffusion performance is achieved using warm air.
- 4) Use different diffuser strips for different essential oil types. Strips can be washed with dish soap and reused. While visible oil may remain in diffuser strip, essential scents may be depleted and require re-application.





## AirComforter Sheet + Dual Zone Temps

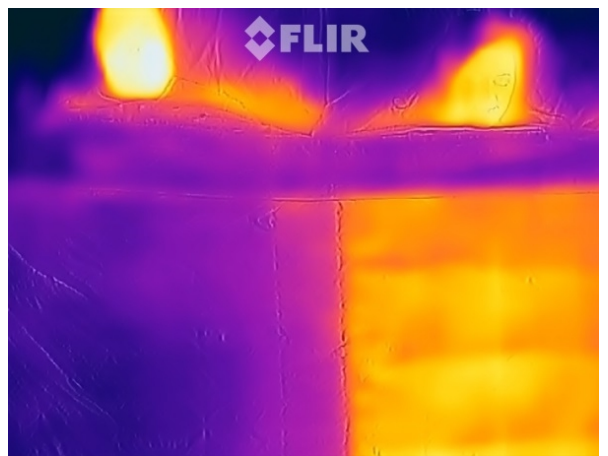
The AirComforter sheet (optional accessory) is a high quality super-soft 100% cotton bedding layer for use with one or two BedJet base units. The AirComforter sheet contains two separate hollow cavities which BedJet Air Nozzles plug into. Each hollow cavity gently distributes the warming or cooling air to one half of the bed. **The AirComforter replaces your normal bedding top sheet** and works underneath blankets, quilts, or regular comforters. Unlike electric blankets, the BedJet is just pure, soft cotton and can be washed over and over again.

When operating with a BedJet, the AirComforter looks wonderfully puffy, luxurious and down filled, but it's actually only filled with conditioned air from the BedJet, making it one of the softest and lightest comforters ever created! The AirComforter sheet can be used in the following configurations:

**Single BedJet:** One BedJet is installed on the bed and the BedJet's heating and cooling power is directed to mostly that half of the bed. The AirComforter cavity on the other side of the bed receives no air and will look and feel just like an ordinary top sheet. Significantly improves cooling experience and performance.

**Dual BedJets:** Two BedJet units are used, one installed on each side of the bed. Each BedJet can be independently controlled to warm or cool each side of the bed for very high temperature gradients (see right).

**The AirComforter can be purchased from retailers carrying the BedJet, or at [www.bedjet.com](http://www.bedjet.com). The AirComforter dramatically improves the performance of the BedJet in cooling mode.**



## Specifications

The BedJet has been designed to operate as a safe extension of your bed. This product has been rigorously tested by an accredited 3<sup>rd</sup> party testing lab to be qualified as a safe electric appliance. The BedJet complies with the following safety and product standards:

- Underwriters Laboratories 962: Powered Furniture, Indirectly Heated & Cooled Beds (6002NA)
- Underwriters Laboratories 499: Heating Appliances (6002NA)
- Canada CSA Standard 22.2 No 64 (6002NA)
- European CE and Australia SSA (Model 7002xx only)

This device complies with Part 15 of the FCC Rules. Operation is subject to the following two conditions: (1) this device may not cause harmful interference, and (2) this device must accept any interference received, including interference that may cause undesired operation.

This equipment has been tested and found to comply with the limits for a Class B digital device, pursuant to Part 15 of the FCC Rules. These limits are designed to provide reasonable protection against harmful interference in a residential installation. This equipment generates, uses and can radiate radio frequency energy and, if not installed and used in accordance with the instructions, may cause harmful interference to radio communications.

However, there is no guarantee that interference will not occur in a particular installation. If this equipment does cause harmful interference to radio or television reception, which can be determined by turning the equipment off and on, the user is encouraged to try to correct the interference by one or more of the following measures:

- Reorient or relocate the receiving antenna.
- Increase the separation between the equipment and receiver.
- Connect the equipment into an outlet on a circuit different from that to which the receiver is connected.
- Consult the dealer or an experienced radio/TV technician for help.

Warning: Changes or modifications to this unit not expressly approved by the party responsible for compliance could void the user's authority to operate the equipment.

This device complies with Industry Canada license-exempt RSS standard(s). Operation is subject to the following two conditions: (1) this device may not cause interference, and (2) this device must accept any interference, including interference that may cause undesired operation of the device.



# Troubleshooting

Use this guide to address problems with your BedJet Product. If problems cannot be resolved, please contact Customer Service at info@bedjet.com or +1.401.404.5250. Do not return any product requiring service without first obtaining Return Authorization Number (RMA) and shipping instructions.

## BedJet Audible Notifications – What does the BEEP mean?

Issue	Indication	Recommendation
1 Beep	<ul style="list-style-type: none"> <li>• BedJet switched on</li> <li>• Cooling/heating mode ON command received from the remote control or App</li> <li>• Air Flow increase/decrease command received from remote control or App</li> </ul>	<ul style="list-style-type: none"> <li>• This is normal operation</li> </ul>
2 Beeps	<ul style="list-style-type: none"> <li>• Cooling/heating mode OFF command received from the remote control or App</li> </ul>	<ul style="list-style-type: none"> <li>• This is normal operation</li> </ul>
3 Beeps	<ul style="list-style-type: none"> <li>• Remote control learning/pairing function has been successfully accomplished</li> </ul>	<ul style="list-style-type: none"> <li>• This indicates successful learning/pairing of a remote control to the BedJet</li> <li>• Remote control has not been learned if 3 beeps are not made</li> </ul>
4 Beeps	<ul style="list-style-type: none"> <li>• User is over-cycling the Turbo-Heat mode by running it more than 10 minutes out of every 30 minutes. This over-cycling is caused by turning the Turbo-Heat back on over and over again after shutoff, or constantly advancing the auto-shutoff timer.</li> </ul>	<ul style="list-style-type: none"> <li>• Follow the instructions on Turbo-Heat mode. Stop trying to over-cycle this setting. While the BedJet machine can handle operating in this mode continuously, over-cycling will not be comfortable for a person in the bed due to the very high levels of warming.</li> </ul>
5 Beeps	<ul style="list-style-type: none"> <li>• A system monitoring error has occurred</li> <li>• The BedJet will be non-functional until resolved</li> <li>• <b>CHECK POWER LED FOR BLINKING LIGHT, THE # OF BLINKS IN SEQUENCE WILL BE AN ERROR CODE.</b></li> </ul>	<ul style="list-style-type: none"> <li>• See diagnostic table below</li> <li>• Call BedJet technical support after checking Power LED for blinking light error code (count the blinks)</li> </ul>



**USER MANUAL – MODELS 6002NA/V1/V2/ & 7002xx**  
**QUESTIONS? EMAIL US AT INFO@BEDJET.COM OR CALL 401-404-5250**  
**WE ARE HERE TO HELP – PLEASE CALL US FOR ADVICE!**

**Diagnose & Fix**

Issue	Possible Causes	Action
Every LED light on BedJet blinking, OR FAN LED rolling back and forth – BedJet not operable	<ul style="list-style-type: none"> <li>• A firmware update was started and not completed, the BedJet is still waiting complete download of new firmware.</li> </ul>	<ul style="list-style-type: none"> <li>• Re-Connect to the BedJet using the Bluetooth App and re-start the firmware update</li> </ul>
Remote control will not operate BedJet	<ul style="list-style-type: none"> <li>• Dead battery in remote</li> <li>• Remote control has a unique code identifier and may need to be re-paired to your BedJet</li> </ul>	<ul style="list-style-type: none"> <li>• Make sure remote control LED lights when button pressed, if not then replace battery</li> <li>• Re-pair remote control to BedJet with learning function on page 11</li> </ul>
Remote control commands are not acknowledged with a beep anymore	<ul style="list-style-type: none"> <li>• Beeper mute may have been accidentally turned on</li> </ul>	<ul style="list-style-type: none"> <li>• Press Mute button on remote control to unmute beeper</li> </ul>
BedJet keeps shutting off without a shutoff command being given or beep; BedJet POWER LED is ON and NOT flashing and BedJet can be restarted normally.	<ul style="list-style-type: none"> <li>• This is normal. Once turned on, every mode has an automatic shutoff timer. Please see page 19 for these auto-shutoff time limits.</li> </ul>	<ul style="list-style-type: none"> <li>• Shutoff Timer can be advanced within certain limits using timer advance button</li> </ul>
<b>BedJet Power LED is flashing, all other LED lights are off and unit will no longer operate, BedJet beeps 5 times</b>	<ul style="list-style-type: none"> <li>• The BedJet microprocessor has discovered a monitoring error within the system. This does not always mean your BedJet is malfunctioning and typically may occur if you rapidly change modes or airflow while at the same time obstructing inlets or outlets.</li> <li>• The number of blinks the Power LED shows is an error code</li> </ul>	<ul style="list-style-type: none"> <li>• Shut the BedJet off for 10 seconds and restart. If this does not solve the problem, or if the problem occurs again, contact BedJet support and record the number of flashes from the Power LED.</li> <li>• Check to make sure air filter is clean and there are no air inlet or outlet obstructions</li> <li>• UPDATE FIRMWARE ON V2 MODELS</li> </ul>
BedJet Heat delivered warm air but then while still in heat mode is blowing cold air	<ul style="list-style-type: none"> <li>• In addition to real time microprocessor control of the heat, the BedJet contains multiple mechanical thermal overhear switches for your protection. They are extremely sensitive and may have disabled the heater unit. They are self-resetting but remain open until power is removed and the unit is allowed to cool off. They may have been triggered by inlet or outlet blockages.</li> </ul>	<ul style="list-style-type: none"> <li>• Switch off BedJet and unplug for 5 minutes. Plug back in, run on cool mode for 1 minute and then attempt to operate the heat mode. This will help reset the thermal overhear switch.</li> <li>• Check air filter to make sure it is clean, make sure there are no inlet or outlet obstructions</li> <li>• If this does not solve the issue, contact BedJet support.</li> <li>• If the above solves the issue but the problem repeats again later then contact BedJet support</li> </ul>



**USER MANUAL – MODELS 6002NA/V1/V2/ & 7002xx**  
**QUESTIONS? EMAIL US AT INFO@BEDJET.COM OR CALL 401-404-5250**  
**WE ARE HERE TO HELP – PLEASE CALL US FOR ADVICE!**

**Diagnose & Fix Continued**

Issue	Possible Causes	Action
BedJet is on but cooling/heating or air flow not felt in bed	<ul style="list-style-type: none"> <li>• Check to make sure Air Nozzle and Air Hose are properly installed on bed, they can shift and move over time.</li> <li>• Check to make sure the bedding/sheets are not bunched up directly in front of Air Nozzle</li> <li>• Low quality top sheets with too low thread count in sheets, or use of jersey knit type loose knit top sheet will allow air to escape before spreading through entire bed</li> <li>• Too heavy a blanket load</li> </ul>	<ul style="list-style-type: none"> <li>• Adjust Air Nozzle and Hose so that Air Nozzle extends at least 1 inch onto the top of the mattress</li> <li>• Pull bedding/sheets flatter so they can allow the air to flow through the bed</li> <li>• Make sure top layer sheet or comforter is used over Air nozzle and is 250 thread count or higher</li> <li>• Use AirComforter accessory</li> </ul>
DUAL ZONE AIRCOMFORTER BedJet is on but it's not cooling or heating very well	<ul style="list-style-type: none"> <li>• Check to make sure Air Nozzle is properly installed with AirComforter, they can shift and move over time.</li> </ul>	<ul style="list-style-type: none"> <li>• Make sure AirComforter elastic opening is fully installed around Air Nozzle and pulled down as far on the Air Hose as possible. The Air Comforter elastic opening should be reaching the sheet clamps.</li> </ul>
BedJet cool mode is on, user feels the air but is not experiencing cooling	<ul style="list-style-type: none"> <li>• Room temperature needs to be below 79 degrees F for cooling mode to be effective</li> <li>• Air Flow setting may need adjustment</li> </ul>	<ul style="list-style-type: none"> <li>• Make sure room ambient air temperature is below 79 degrees.</li> <li>• Adjust air flow up and down through full range to see if cooling is improved</li> </ul>
BedJet is on heat mode but after 1 minute operation Air Flow feels only slightly warm and not hot	<ul style="list-style-type: none"> <li>• Extreme cold ambient air temperature and too high an Air Flow setting</li> </ul>	<ul style="list-style-type: none"> <li>• If the room air temperature is extremely cold, the BedJet may not be able to fully warm up the air at very high air flow settings</li> <li>• Try turning down Air Flow and the output air temperature should increase to normal</li> <li>• If this does not correct the issue then contact BedJet support</li> </ul>



## Warranty – North American Customers

BEDJET LLC gives to the original purchaser (“the purchaser”) of a new BedJet (“the product”) this limited express warranty which covers any defects in materials or workmanship in the product under normal use. Except for this limited express warranty and any implied warranties under applicable law, BEDJET LLC makes no express or implied representations or warranties, either in this document or in any of its instruction manuals, product packaging, or other materials accompanying or used in conjunction with sale or marketing of the product.

### DURATION OF WARRANTY

This limited express warranty, and any implied warranties (including implied warranties of merchantability and fitness for a particular purpose) on the product **will be for two (2) years from the documented date of purchase**, as noted below. Coverage terminates if the purchaser sells, disposes of, or otherwise transfers the product.

1. **During year one (1)** following the documented date of purchase, BEDJET LLC will repair or replace any product or part(s) that are defective in either materials or workmanship to include parts, labor, and delivery back to the purchaser at the expense of BEDJET LLC. Delivery charges are covered under this warranty only for the continental United States.
2. **During year two (2)** following the documented date of purchase, BEDJET LLC will repair or replace any product or part(s) that are defective in either materials or workmanship to include parts and labor at the expense of BEDJET LLC. Return delivery and handling shall be billed to the purchaser. Payment for shipping and handling must be made at time of issuance of Return Authorization Number.

### EXCLUSIONS OF COVERAGE

This limited express warranty is conditioned upon proper use of the product by the purchaser. Any problem with the product that is caused by abuse, misuse, and operation contrary to or inconsistent with the written instructions or an act of God (such as a flood) is not covered. BEDJET LLC does not have any obligations if our inspection reveals that the product has been altered, modified, damaged, subjected to or involved in an accident, disassembled, repaired or attempted to be repaired by someone other than us, or used in a manner inconsistent with its intended purpose.

Indirect, special, incidental or consequential damages (including any lost revenues, loss of use or lost profits) are not recoverable under the warranty, or with respect to the sale or use of the product. In no event will our entire liability to you exceed the purchase price actually paid by you for the product, or any defective portion thereof, whichever is less. This limitation does not apply to any claims for personal injury. Also, because some states do not allow, or restrict, limitations of incidental or consequential damages, some or all the foregoing may not apply to you.

### What Are Your Rights Under State Law and Other Considerations?

This warranty, and any unresolved claims and disputes between you and BEDJET LLC shall be governed by and subject to the laws (exclusive of conflict-of-law provisions) of the State of Rhode Island, which shall also be the exclusive venue and jurisdiction for all such claims and disputes. All claims against BEDJET LLC must be brought within three (3) months from the time they arise. As some states do not allow, or restrict, limitations on how long an implied warranty lasts, some or all of the foregoing may not apply to you. This warranty gives you specific legal rights, and you may also have other rights that vary from state to state. Other than as expressly set forth above, BEDJET LLC does not authorize any agent or representative to assume any obligation or liability here under. **IF YOU DO NOT AGREE WITH THE ABOVE TERMS YOU MAY RETURN YOUR PRODUCT FOR A FULL REFUND WITHIN 30 DAYS AFTER PURCHASE.**

