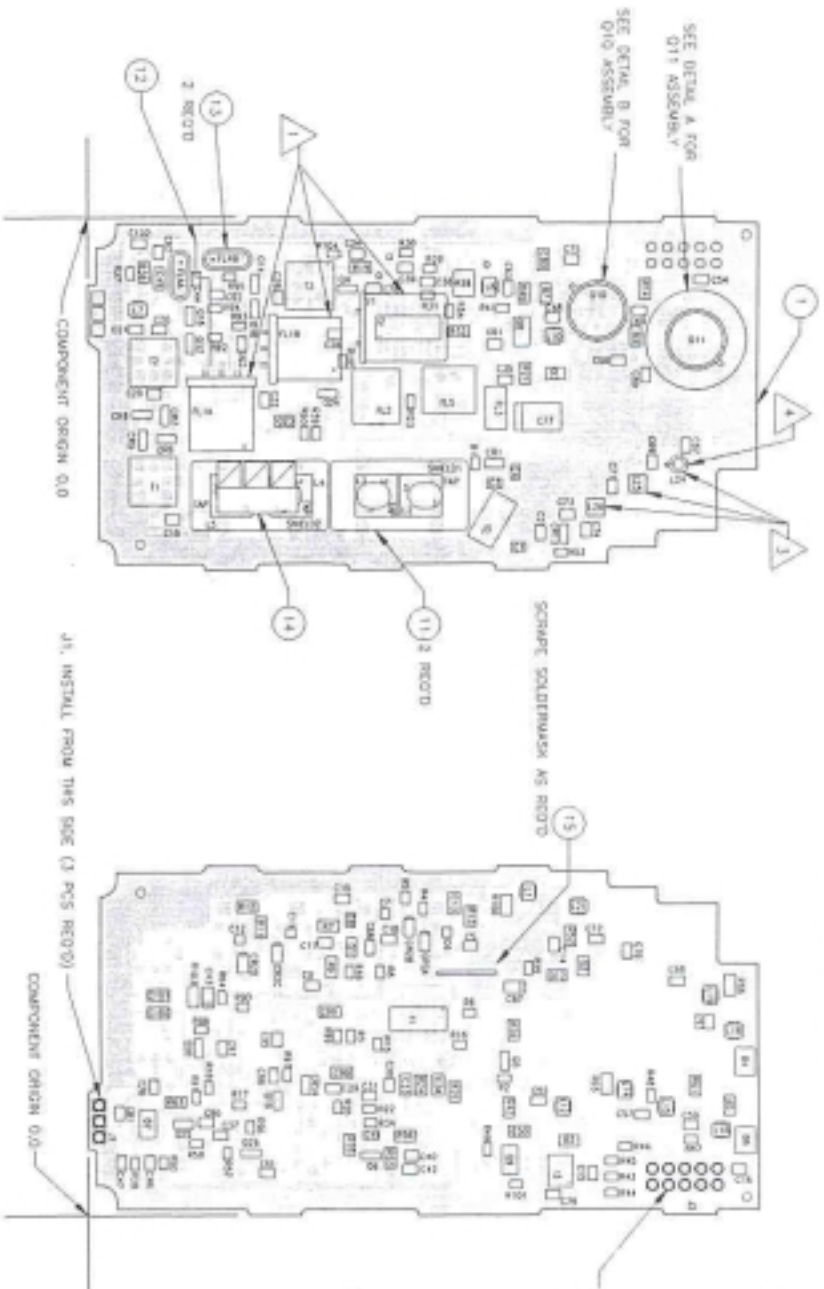
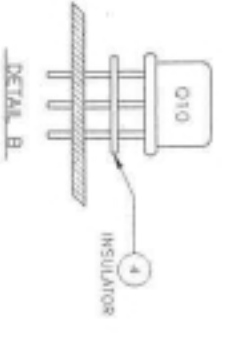
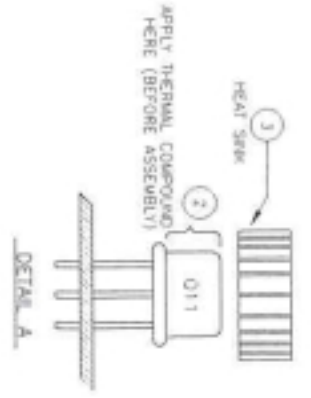


FCC ID: K95GPH51



J1. INSTALL FROM THIS SIDE (2 PCS REVD)
COMPONENT ORIGIN 0.0

J2. INSTALL FROM THIS SIDE
(10 PCS REVD)



- NOTES: UNLESS OTHERWISE SPECIFIED:
- ▲ AFFIXING FOLDED DOWN PARTS:
 - Y1: USE FOAM TAPE IMA 10
 - FL1B: USE FOAM TAPE IFA 9
 - FL1A: USE FOAM TAPE IMA 8
 - 2. UNMOUNTED PADS ARE RESERVED FOR ALTERNATE USE.
 - ▲ MOUNT COILS FLUSH TO BOARD SURFACE.
 - ▲ COMPONENT ORIENTATION IS CRITICAL.
 - 5. TOP SOLDERPASTE LAYER (0009-5705-907) IS AT REV. B AND BOTTOM SOLDERPASTE LAYER (0009-5705-906) IS AT REV. B

5 WATT RX/TX BOARD (NEW REVISION)

200-08293-0000
200-08293-0030

EPH
EPI

(USE NEW REVISION DRAWING AND SCHEMATIC)

SYMBOL	OLD PART NO.	NEW PART NO.	DESCRIPTION	A	UM	EPH	EPI
B	2	013-00173-0000	2502-2022-300	FERRITE BEAD	EA	1.00	1.00
B	3	013-00173-0000	2502-2022-300	FERRITE BEAD	EA	1.00	1.00
B	4	013-00172-0000	2502-2022-200	FERR BEAD SRFC MT	EA	1.00	1.00
B	5	013-00173-0000	2502-2022-300	FERRITE BEAD	EA	1.00	1.00
B	7	013-00173-0000	2502-2022-300	FERRITE BEAD	EA	1.00	1.00
C	1	106-00072-0034	1553-5237-767	CAP CH 68PFNPO/50V	EA	1.00	.
C	1	106-00072-0038	1553-5237-783	CAP CH 82PFNPO/50V	EA	.	1.00
C	2	106-00072-0058	1553-5525-314	CAP CR CH 5.1PF	EA	1.00	.
C	2	106-00072-0089	1553-5313-522	CAP CH8.2PFNPO/50V	EA	.	1.00
C	3	106-00072-0046	1553-5237-788	CAP CH 1PF NPO/50V	EA	.	1.00
C	3	106-00072-0053	1553-5237-754	CAP CR CH 3.0PF	EA	1.00	.
C	4	106-05102-0016	1553-5313-582	CAP CH 1K NPO/50V	EA	1.00	1.00
C	5	106-00072-0020	1553-5237-798	CAP CH 20PFNPO/50V	EA	.	1.00
C	5	106-00072-0028	1553-5313-520	CAP CH 36PFNPO/50V	EA	1.00	.
C	6	106-00116-0049	1564-2042-549	CAP CHIP PORCELAIN	EA	1.00	.
C	6	106-00116-0053	1564-2042-553	CAP CHIP PORCELAIN	EA	.	1.00
C	7	106-00116-0049	1564-2042-549	CAP CHIP PORCELAIN	EA	1.00	.
C	7	106-00116-0053	1564-2042-553	CAP CHIP PORCELAIN	EA	.	1.00
C	8	106-05102-0047	1553-5237-733	CAP CH 1K X7R/50V	EA	1.00	1.00
C	9	106-05102-0016	1553-5313-582	CAP CH 1K NPO/50V	EA	1.00	1.00
C	10	106-05102-0047	1553-5237-733	CAP CH 1K X7R/50V	EA	1.00	1.00
C	11	106-00116-0049	1564-2042-549	CAP CHIP PORCELAIN	EA	1.00	.
C	11	106-00116-0053	1564-2042-553	CAP CHIP PORCELAIN	EA	.	1.00
C	12	106-00116-0049	1564-2042-549	CAP CHIP PORCELAIN	EA	1.00	.
C	12	106-00116-0053	1564-2042-553	CAP CHIP PORCELAIN	EA	.	1.00
C	13	106-04104-0047	1553-5237-780	CH 100KX7R/50V	EA	1.00	1.00
C	14	106-05102-0016	1553-5313-582	CAP CH 1K NPO/50V	EA	1.00	1.00
C	15	106-05102-0016	1553-5313-582	CAP CH 1K NPO/50V	EA	1.00	1.00
C	16	106-05103-0046	1553-5237-794	CAP CH 10K X7R/50V	EA	1.00	1.00
C	17	106-05102-0016	1553-5313-582	CAP CH 1K NPO/50V	EA	1.00	1.00
C	18	106-05102-0047	1553-5237-733	CAP CH 1K X7R/50V	EA	1.00	1.00
C	19	106-05102-0047	1553-5237-733	CAP CH 1K X7R/50V	EA	1.00	1.00
C	20	106-00072-0012	1553-5313-582	CAP CH10PF NPO/50V	EA	1.00	.
C	20	106-00072-0014	1553-5237-779	CAP CH12PF NPO/50V	EA	.	1.00
C	21	106-00072-0024	1553-5237-762	CAP CH 22PFNPO/50V	EA	.	1.00
C	21	106-00072-0032	1553-5237-769	CAP CH 47PFNPO/50V	EA	1.00	.
C	22	106-00072-0006	1553-5313-508	CAP CH5.6PFNPO/50V	EA	.	1.00
C	22	106-00072-0010	1553-5313-551	CAP CH8.2PFNPO/50V	EA	1.00	.
C	23	106-00072-0010	1553-5313-551	CAP CH8.2PFNPO/50V	EA	1.00	.
C	23	106-00072-0024	1553-5237-762	CAP CH 22PFNPO/50V	EA	.	1.00
C	24	106-05102-0047	1553-5237-733	CAP CH 1K X7R/50V	EA	1.00	1.00
C	25	106-05102-0047	1553-5237-733	CAP CH 1K X7R/50V	EA	1.00	1.00
C	26	106-04104-0047	1553-5237-780	CH 100KX7R/50V	EA	1.00	1.00
C	29	106-05103-0046	1553-5237-794	CAP CH 10K X7R/50V	EA	1.00	1.00
C	29	106-05103-0046	1553-5237-794	CAP CH 10K X7R/50V	EA	1.00	1.00
C	30	106-05121-0016	1553-5313-503	CAP CH120PFNPO/50V	EA	1.00	1.00
C	31	106-00072-0042	1553-5237-701	CAP CH 33PFNPO/50V	EA	1.00	1.00
C	33	106-04473-0048	1553-5237-782	CAP CH 47K X7R/50V	EA	1.00	1.00
C	34	106-04473-0048	1553-5237-782	CAP CH 47K X7R/50V	EA	1.00	1.00
C	35	106-05121-0016	1553-5313-503	CAP CH120PFNPO/50V	EA	1.00	1.00
C	38	106-05581-0046	1553-5525-317	CH 560PF 7R/50V	EA	1.00	1.00
C	39	106-05121-0016	1553-5313-503	CAP CH120PFNPO/50V	EA	1.00	1.00
C	40	106-05580-0016	1553-5237-767	CAP CH 56PFNPO/50V	EA	1.00	1.00
C	41	106-05122-0047	1553-5525-318	CAPCH1200PFX7R/50V	EA	1.00	1.00
C	42	106-05222-0046	1553-5525-301	CAP CH 2.2KX7R/50V	EA	1.00	1.00
C	45	106-04104-0047	1553-5237-780	CH 100KX7R/50V	EA	1.00	1.00
C	46	106-00072-0018	1553-5237-777	CAP CH 18PFNPO/50V	EA	1.00	.
C	46	106-00072-0024	1553-5237-762	CAP CH 22PFNPO/50V	EA	.	1.00
C	47	106-05102-0047	1553-5237-733	CAP CH 1K X7R/50V	EA	1.00	1.00
C	48	106-05102-0047	1553-5237-733	CAP CH 1K X7R/50V	EA	1.00	1.00
C	49	106-00072-0026	1553-5237-783	CAP CH 27PFNPO/50V	EA	1.00	.

5 WATT RX/TX BOARD (NEW REVISION)

200-06293-0000
200-05293-0030
PAGE 2EPH
EPI

SYMBOL	OLD PART NO.	NEW PART NO.	DESCRIPTION	A	UM	EPH	EPI
C	49	106-00072-0024	1553-5237-762	CAP CH 22PFNPO/50V	EA	.	1.00
C	50	096-01186-0062	1552-8463-121	CAP 1.0UF 16V 20%	EA	1.00	1.00
C	51	106-05102-0047	1553-5237-733	CAP CH 1K X7R/50V	EA	1.00	1.00
C	52	106-00072-0032	1553-5237-769	CAP CH 47PFNPO/50V	EA	1.00	.
C	52	106-00072-0034	1553-5237-767	CAP CH 56PFNPO/50V	EA	.	1.00
C	53	106-00072-0036	1553-5237-789	CAP CH 68PFNPO/50V	EA	1.00	1.00
C	54	106-05102-0047	1553-5237-733	CAP CH 1K X7R/50V	EA	1.00	1.00
C	55	106-04104-0047	1553-5237-780	CH 100KX7R/50V	EA	1.00	1.00
C	56	106-05102-0047	1553-5237-733	CAP CH 1K X7R/50V	EA	1.00	1.00
C	57	106-00072-0032	1553-5237-769	CAP CH 47PFNPO/50V	EA	1.00	.
C	57	106-00072-0034	1553-5237-767	CAP CH 56PFNPO/50V	EA	.	1.00
C	58	106-00072-0036	1553-5237-789	CAP CH 68PFNPO/50V	EA	1.00	.
C	58	106-00072-0035	1553-5237-783	CAP CH 82PFNPO/50V	EA	.	1.00
C	59	106-00072-0036	1553-5237-789	CAP CH 68PFNPO/50V	EA	1.00	.
C	59	106-00072-0038	1553-5237-783	CAP CH 82PFNPO/50V	EA	.	1.00
C	60	106-05102-0047	1553-5237-733	CAP CH 1K X7R/50V	EA	1.00	1.00
C	61	106-04104-0047	1553-5237-780	CH 100KX7R/50V	EA	1.00	1.00
C	62	106-00072-0032	1553-5237-769	CAP CH 47PFNPO/50V	EA	1.00	1.00
C	63	106-00072-0024	1553-5237-762	CAP CH 22PFNPO/50V	EA	1.00	.
C	63	106-00072-0026	1553-5237-763	CAP CH 27PFNPO/50V	EA	.	1.00
C	64	106-00072-0032	1553-5237-769	CAP CH 47PFNPO/50V	EA	1.00	.
C	64	106-00072-0034	1553-5237-767	CAP CH 56PFNPO/50V	EA	.	1.00
C	65	106-00072-0032	1553-5237-769	CAP CH 47PFNPO/50V	EA	1.00	.
C	65	106-00072-0036	1553-5237-789	CAP CH 68PFNPO/50V	EA	.	1.00
C	66	106-00072-0024	1553-5237-762	CAP CH 22PFNPO/50V	EA	1.00	.
C	66	106-00072-0026	1553-5237-763	CAP CH 27PFNPO/50V	EA	.	1.00
C	67	106-00072-0012	1553-5313-552	CAP CH10PF NPO/50V	EA	.	1.00
C	67	106-00072-0060	1553-5313-517	CAP CR CH 7.5PF	EA	1.00	.
C	68	106-00072-0059	1553-5313-522	CAP CH5.2PFNPO/50V	EA	1.00	1.00
C	69	106-00072-0014	1553-5237-779	CAP CH12PFNPO/50V	EA	1.00	.
C	69	106-00072-0073	1553-5237-773	CAP CH 24PFNPO/50V	EA	.	1.00
C	70	106-00072-0058	1553-5525-314	CAP CR CH 5.1PF	EA	1.00	.
C	70	106-00072-0059	1553-5313-522	CAP CH5.2PFNPO/50V	EA	.	1.00
C	71	106-00072-0014	1553-5237-779	CAP CH12PFNPO/50V	EA	1.00	.
C	71	106-00072-0073	1553-5237-773	CAP CH 24PFNPO/50V	EA	.	1.00
C	72	106-00072-0000	1553-5525-315	CAPCH1.80PFNPO/500V	EA	1.00	1.00
C	73	106-00072-0010	1553-5313-551	CAP CH8.2PFNPO/50V	EA	.	1.00
C	73	106-00072-0012	1553-5313-552	CAP CH10PF NPO/50V	EA	1.00	.
C	74	106-00072-0034	1553-5237-767	CAP CH 56PFNPO/50V	EA	1.00	.
C	74	106-00072-0036	1553-5237-783	CAP CH 82PFNPO/50V	EA	.	1.00
C	75	106-05102-0016	1553-5313-582	CAP CH 1K NPO/50V	EA	1.00	1.00
C	76	106-05102-0047	1553-5237-733	CAP CH 1K X7R/50V	EA	1.00	1.00
C	77	096-01186-0064	1552-8463-113	CAP 10UF 16V 20%	EA	1.00	1.00
C	78	106-05103-0046	1553-5237-794	CAP CH 10K X7R/50V	EA	1.00	1.00
C	79	106-04272-0046	1553-5313-574	CAP CH 2.7KX7R/50V	EA	1.00	1.00
C	80	106-04104-0047	1553-5237-780	CH 100KX7R/50V	EA	1.00	1.00
C	81	106-05102-0047	1553-5237-733	CAP CH 1K X7R/50V	EA	1.00	1.00
C	87	096-01186-0062	1552-8463-121	CAP 1.0UF 16V 20%	EA	1.00	1.00
C	88	106-00072-0034	1553-5313-523	CAP CH4.7PFNPO/50V	EA	1.00	1.00
C	89	106-00072-0068	1553-5237-751	CAP CH0.5PFNPO/50V	EA	1.00	1.00
C	90	106-04104-0047	1553-5237-780	CH 100KX7R/50V	EA	1.00	1.00
C	91	106-00072-0012	1553-5313-552	CAP CH10PF NPO/50V	EA	1.00	1.00
C	92	106-05102-0047	1553-5237-733	CAP CH 1K X7R/50V	EA	1.00	1.00
C	93	106-05102-0047	1553-5237-733	CAP CH 1K X7R/50V	EA	1.00	1.00
C	107	106-00072-0012	1553-5313-552	CAP CH 10PF NPO/50V	EA	1.00	.
C	108	106-00072-0014	1553-5237-779	CAP CH 12PFNPO/50V	EA	1.00	.
CR	1	007-06418-0000	4824-2047-300	PIN DIODE	EA	1.00	1.00

5 WATT RX/TX BOARD (NEW REVISION)

200-08293-0000
200-08293-0030
PAGE 3EPH
EPI

SYMBOL	OLD PART NO.	NEW PART NO.	DESCRIPTION	A	UM	EPH	EPI	
CR	2	007-04134-0000	4809-2047-100	VARACTOR SET OF 4	EA	1.00	1.00	
CR	6	007-06188-0000	4824-2008-600	DIO HOT CARRIER	EA	1.00	1.00	
CR	7	007-06188-0000	4824-2008-600	DIO HOT CARRIER	EA	1.00	1.00	
CR	8	007-06188-0000	4824-2008-600	DIO HOT CARRIER	EA	1.00	1.00	
CR	9	007-06188-0000	4824-2008-600	DIO HOT CARRIER	EA	1.00	1.00	
CR	13	007-08418-0000	4824-2047-300	PIN DIODE	EA	1.00	1.00	
CR	14	007-06226-0001	4824-2021-600	SOT23 DIO NMBD362	EA	1.00	1.00	
FL	1	017-00096-0000	2706-2022-600	XTAL FLTR 16.9MHZ	EA	1.00	.	
FL	1	017-00237-0000	2706-2092-900	FLTR XTAL 14.0 MHZ	EA	.	1.00	
FL	2	017-00106-0000	2700-2011-200	FLTR CR 455KHZ	EA	1.00	1.00	
FL	3	017-00137-0000	2701-2047-600	DISCRIMINATOR CER.	EA	1.00	1.00	
I	2	120-03193-0000	3134-2005-600	IC FMIF MC33570	EA	1.00	1.00	
I	3	120-03473-0000	3134-2082-200	OP AMP	EA	1.00	1.00	
PM	1	009-08293-0010	1700-8707-310	PCBD RXTX	A	EA	1.00	1.00
PM	4	091-00320-0000	3106-2001-200	INSUL TO-5	EA	1.00	1.00	
PM	5	076-01456-0001	5400-2027-601	ADAPTOR W/FIN	A	EA	1.00	1.00
PM	6	016-01124-0002	1601-2000-603	FOAM TAPE .38W	IN	0.35	0.35	
PM	9	016-01124-0002	1601-2000-603	FOAM TAPE .38W	IN	0.35	0.35	
PM	10	016-01124-0002	1601-2000-603	FOAM TAPE .38W	IN	0.50	0.50	
PM	11	047-06735-0001	2906-2001-601	CAN DUAL COIL	EA	2.00	2.00	
PM	12	047-06707-0001	2906-2029-401	GROUND LUG XSTR	EA	1.00	1.00	
PM	14	026-00027-0000	6016-0000-001	WIRE CU18AWG TIN	IN	0.18	.	
PM	14	026-00037-0000		WIRE CU38AWG TIN	IN	.	0.18	
J	1	030-01396-0001	2108-2017-401	SOCKT MINATURE SPRG	EA	3.00	3.00	
J	2	030-01395-0001	2108-2017-401	SOCKT MINATURE SPRG	EA	3.00	3.00	
J	3	030-00417-0000	2108-2017-300	25 DGR CONN RCPTBL	EA	1.00	1.00	
L	1	019-02660-0048	1809-2013-648	INDUCT SURF MT	EA	1.00	.	
L	1	019-02660-0049	1809-2013-649	INDUCT SURFACE MT	EA	.	1.00	
L	2	019-02701-0001	1800-2048-101	MOLDED INDUCT	EA	1.00	1.00	
L	3	019-02701-0002	1800-2048-102	MOLDED INDUCTOR	EA	1.00	1.00	
L	4	019-02701-0002	1800-2048-102	MOLDED INDUCTOR	EA	1.00	1.00	
L	5	019-02701-0000	1800-2048-100	MOLDED INDUCTOR	EA	1.00	1.00	
L	7	019-02660-0050	1809-2013-650	INDUCT SURF MT	EA	1.00	1.00	
L	8	019-02660-0045	1809-2013-645	INDUCT SURF MT	EA	1.00	.	
L	8	019-02660-0046	1809-2013-646	INDUCT SURF MT	EA	.	1.00	
L	10	019-02660-0045	1809-2013-645	INDUCT SURF MT	EA	.	1.00	
L	10	019-02660-0047	1809-2013-647	INDUCT SURF MT	EA	1.00	.	
L	11	019-02660-0003	1809-2013-603	INDUCT SURFACE MT	EA	1.00	1.00	
L	12	019-02660-0044	1809-2013-644	INDUCT SURF MT	EA	1.00	1.00	
L	14	019-02660-0003	1809-2013-603	INDUCT SURFACE MT	EA	1.00	1.00	
L	16	019-02660-0044	1809-2013-644	INDUCT SURF MT	EA	1.00	1.00	
L	17	019-02660-0013	1809-2013-613	INDUCT SURFACE MT	EA	1.00	1.00	
L	18	019-02404-0003	1801-2048-003	COIL 3T	EA	1.00	1.00	
L	21	019-02660-0030	1809-2013-630	INDUCT SM 1.5 10%	EA	1.00	1.00	
L	22	019-02404-0005	1801-2048-005	4TX.070 24AWG	EA	1.00	.	
L	22	019-02717-0004	1801-2023-304	COIL 4TX.100 #24	EA	.	1.00	
L	23	019-02404-0003	1801-2048-003	COIL 3T	EA	1.00	.	
L	23	019-02717-1403	1801-2023-300	COIL 3TX.114 #24	EA	.	1.00	
L	24	019-02717-2004	1801-2023-307	COIL 4TX.120 #24	EA	1.00	1.00	
L	25	019-02717-4204	1801-2023-305	COIL 4TX.142 #24	EA	.	1.00	
L	25	019-02717-4804	1801-2023-306	COIL 4TX.148 #24	EA	1.00	.	
L	26	019-02717-4204	1801-2023-305	COIL 4TX.142 #24	EA	1.00	.	
L	26	019-02717-4804	1801-2023-306	COIL 4TX.148 #24	EA	.	1.00	
Q	1	007-00940-0000	4823-2025-300	XSTR RF NPN	EA	1.00	1.00	

5 WATT RX/TX BOARD (NEW REVISION)

200-08293-0000
200-08293-0030
PAGE 4EPH
EPI

SYMBOL	OLD PART NO.	NEW PART NO.	DESCRIPTION	A	UM	EPH	EPI
Q	2	007-08084-0017	4823-2010-817	XSTR NPN 47K, 47K	EA	1.00	1.00
Q	3	007-08084-0015	4823-2010-818	TSTR DIGITAL 90	EA	1.00	1.00
Q	4	007-00529-0000	4823-2026-400	XSTR NPN MMBTH24	EA	1.00	1.00
Q	6	007-00187-0002	4823-3741-401	XSTR SOT-23 2N5089	EA	1.00	1.00
Q	7	007-00539-0000	4823-1367-900	XSTR MMBTH10	EA	1.00	1.00
Q	8	007-00907-0000	4823-2008-300	XSTR BFG17	EA	1.00	1.00
Q	9	007-00936-0000	4823-2046-600	PUR MOSFET N-CHNL	EA	1.00	1.00
Q	10	007-00545-0000	4804-2009-000	XSTR RF PWE 2N6255	EA	1.00	1.00
Q	11	007-00538-0000	4804-2008-900	XSTR RF POWER	EA	1.00	1.00
Q	12	007-08064-0014	4823-2010-814	XSTR PNP 4.7K, 10K	EA	1.00	1.00
Q	12	007-00943-0000	4823-2025-300	XSTR RF NPN	EA	1.00	1.00
R	1	130-08334-0013	4724-0334-233	RES CH 330K TW 5%	EA	1.00	1.00
R	2	130-05101-0023	4718-5237-313	RES CH 100 EW 5%	EA	1.00	1.00
R	3	130-05101-0023	4718-5237-313	RES CH 100 EW 5%	EA	1.00	1.00
R	4	130-05124-0013	4724-0124-233	RES CH 120K EW 5%	EA	1.00	1.00
R	5	130-05124-0013	4724-0124-233	RES CH 120K TW 5%	EA	1.00	1.00
R	7	130-05271-0023	4718-5237-317	RES CHIP 270EW5%	EA	1.00	1.00
R	7	130-05511-0023	4718-5317-149	RES CHIP 510 EW 5%	EA	1.00	1.00
R	8	130-05103-0013	4724-0103-233	RES CH 10K TW 5%	EA	1.00	1.00
R	9	130-05221-0023	4718-5237-323	RES CHIP 220 EW 5%	EA	1.00	1.00
R	10	130-05103-0013	4724-0103-233	RES CH 10K TW 5%	EA	1.00	1.00
R	11	130-05124-0023	4718-5237-369	RES CHIP 120KEW5%	EA	1.00	1.00
R	12	130-05124-0023	4718-5237-369	RES CHIP 120KEW5%	EA	1.00	1.00
R	13	130-05103-0023	4718-5237-310	RES CH 10K EW 5%	EA	1.00	1.00
R	14	130-09003-0000	4728-0019-945	RES CH 0.10 10% QS	EA	1.00	1.00
R	19	130-05274-0023	4718-5237-344	RES CHIP 270KEW5%	EA	1.00	1.00
R	20	130-05472-0023	4718-5237-303	RES CHIP 4.7KEW5%	EA	1.00	1.00
R	21	130-05101-0023	4718-5237-313	RES CH 100 EW 5%	EA	1.00	1.00
R	22	130-05753-0013	4724-0753-233	RES CH 75K TW 5%	EA	1.00	1.00
R	23	130-05202-0013	4724-0202-233	RES CH 2K TW 5%	EA	1.00	1.00
R	24	130-05202-0023	4718-5317-151	RES CHIP 2K EW 5%	EA	1.00	1.00
R	25	130-05473-0023	4718-5237-324	RES CHIP 47KEW5%	EA	1.00	1.00
R	26	130-05152-0023	4718-5237-319	RES CHIP 1.5KEW5%	EA	1.00	1.00
R	26	130-00272-0002	4719-2046-002	RES VARI 2K	EA	1.00	1.00
R	29	130-05392-0013	4724-0392-233	RES CH 3.9K TW 5%	EA	1.00	1.00
R	30	130-05471-0013	4724-0471-233	RES CH 470 TW 5%	EA	1.00	1.00
R	31	130-05154-0013	4724-0154-233	RES CH 150K TW 5%	EA	1.00	1.00
R	32	130-05684-0023	4718-5237-334	RES CHIP 680KEW8%	EA	1.00	1.00
R	33	130-05474-0023	4718-5237-336	RES CHIP 470KEW5%	EA	1.00	1.00
R	34	130-05913-0013	4724-0913-233	RES CH 91K TW 5%	EA	1.00	1.00
R	35	130-05204-0023	4718-5237-382	RES CHIP 200KEW5%	EA	1.00	1.00
R	36	130-05682-0023	4718-5237-381	RES CHIP 6.8KEW8%	EA	1.00	1.00
R	37	130-05202-0013	4724-0202-233	RES CH 2K TW 5%	EA	1.00	1.00
R	38	130-05151-0013	4724-0151-233	RES CH 150 TW 5%	EA	1.00	1.00
R	39	130-05101-0013	4724-0101-233	RES CH 100 TW 5%	EA	1.00	1.00
R	40	130-05102-0023	4718-5237-301	RES CH 1K EW 5%	EA	1.00	1.00
R	41	130-05271-0013	4724-0271-233	RES CH 270 TW 5%	EA	1.00	1.00
R	42	130-05100-0023	4718-5237-347	RES CH 10 EW 5%	EA	1.00	1.00
R	43	130-05202-0012	4724-0202-223	RES CH 2K TW 2%	EA	1.00	1.00
R	44	130-05753-0012	4724-0753-223	RES CH 75K TW 2%	EA	1.00	1.00
R	45	130-05753-0012	4724-0753-223	RES CH 75K TW 2%	EA	1.00	1.00
R	46	130-05202-0012	4724-0202-223	RES CH 2K TW 2%	EA	1.00	1.00
R	47	130-08022-0033	4728-0229-335	RES CHIP 2.2QW 5%	EA	1.00	1.00
R	48	130-05022-0033	4728-0229-336	RES CHIP 2.2QW 5%	EA	1.00	1.00
R	49	130-05101-0043	4729-0101-336	RES CHIP 100 HW	EA	1.00	1.00
R	50	130-05030-0033	4729-0030-336	RES CH 3.0 QW 5%	EA	1.00	1.00
R	52	130-06621-0033	4728-0621-336	RES CHIP 620 QW	EA	1.00	1.00
R	53	130-08334-0013	4724-0334-233	RES CH 330K TW 5%	EA	1.00	1.00
R	54	130-05102-0013	4724-0102-233	RES CH 1K TW 5%	EA	1.00	1.00
R	55	130-05220-0023	4718-5399-912	RES CHIP 22 5% EW	EA	1.00	1.00
R	56	130-05103-0023	4718-5237-310	RES CHIP 10K EW 5%	EA	1.00	1.00
R	57	130-05103-0023	4718-5237-310	RES CHIP 10K EW 5%	EA	1.00	1.00
R	58	130-05103-0023	4718-5237-310	RES CHIP 10K EW 5%	EA	1.00	1.00
R	59	130-05511-0023	4718-5317-149	RES CHIP 510 EW 5%	EA	1.00	1.00
R	60	130-05221-0023	4718-5237-323	RES CHIP 220 EW 5%	EA	1.00	1.00
R	61	130-05000-0015	4724-0500-009	RES CHIP 0 TW	EA	1.00	1.00
R	62	130-05000-0015	4724-0500-009	RES CHIP 0 TW	EA	1.00	1.00

5 WATT RX/TX BOARD (NEW REVISION)

200-08293-0000
200-08293-0030
PAGE 6

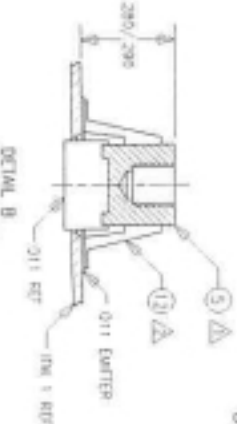
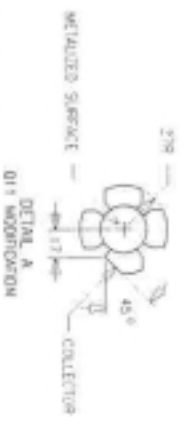
EPH
EPI

SYMBOL	QTY	OLD PART NO.	NEW PART NO.	DESCRIPTION	A	UM	EPH	EPI
R	102	130-05104-0013	4724-0104-233	RES CH 100K TW 5%	EA	1.00	1.00	
R	103	130-05473-0013	4724-0473-233	RES CH 47K TW 5%	EA	1.00	1.00	
REF	1	300-08293-0010	0008-5707-310	ASY EPH 5W R/T BD	RF	X	X	
REF	2	002-08293-0010	0007-5707-310	SCH EPH 5W R/T BD	RF	X		
REF	2	002-08293-0030	0007-5707-330	SCH EPI R/T BD	RF		X	
T	1	019-08135-0000	1800-2013-200	XFMR MIXER	EA	1.00	1.00	
T	2	019-08134-0000	1800-2048-300	XFMR IF T	EA	1.00		
T	2	019-08144-0000	1800-2093-100	MIXER INTSTGE TRSN	EA		1.00	
T	3	019-08133-0000	1800-2048-200	XFMR IF	EA	1.00		
T	3	019-08145-0000	1800-2093-200	TRANSFORMER IF	EA		1.00	
Y	1	044-00152-0000	2301-2011-600	XTAL 17.355MHZ	EA	1.00		
Y	1	044-00157-0000	2301-2095-200	14.455 MHZ QTZ XTL	EA		1.00	

SEE DETAIL A FOR 011 WOOD/GALVAN
SEE DETAIL B FOR 011 ASSEMBLY



FOC ID: K96GPH51



NOTES: UNLESS OTHERWISE SPECIFIED:

- ▲ SOLDER ANGLE (SEE 5) TO METALLIZED SURFACE OF 011
- ▲ SOLDER "FEET" OF GND USE 180V (2) TO CENTER LEADS OF 011 2 PINS
- ▲ AIRBORNE FOLDED COPPER PARTS
- ▲ USE FLOW TAP (10) (BRAND LEADS GND FROM BOTTOM OF PACK)
- ▲ USE FLOW TAP (10) (BRAND LEADS GND FROM BOTTOM OF PACK)
- ▲ ALL REFERENCE DESIGNATORS ARE PRECEDED BY THE NO. 10
- ▲ MOUNT COAX FLUSH TO BOARD SURFACE

▲ -DIMS ONLY. SOLDER FEELS TO VIA CONNECTED TO PINS OF 12

5 WATT RX/TX BOARD (FLEX)

200-08830-0000

EPH

SYMBOL	CLD PART NO.	NEW PART NO.	DESCRIPTION	A	UM	EPH
B	2	013-00173-0000	2502-2022-300	FERRITE BEAD	EA	1.00
B	3	013-00173-0000	2502-2022-300	FERRITE BEAD	EA	1.00
B	4	013-00172-0000	2502-2022-200	FERR BEAD SRFC MT	EA	1.00
B	5	013-00173-0000	2502-2022-300	FERRITE BEAD	EA	1.00
B	7	013-00173-0000	2502-2022-300	FERRITE BEAD	EA	1.00
C	1	106-00072-0034	1553-5237-767	CAP CH 56PFNPO/50V	EA	1.00
C	2	106-00072-0058	1553-5525-314	CAP CR CH 5.1PF	EA	1.00
C	3	106-00072-0053	1553-5237-754	CAP CR CH 3.0PF	EA	1.00
C	4	106-05102-0016	1553-5313-582	CAP CH 1K NPO/50V	EA	1.00
C	5	106-00072-0025	1553-5313-520	CAP CH 36PFNPO/50V	EA	1.00
C	6	106-00116-0049	1564-2042-549	CAP CHIP PORCELAIN	EA	1.00
C	7	106-00116-0049	1564-2042-549	CAP CHIP PORCELAIN	EA	1.00
C	8	106-05102-0047	1553-5237-733	CAP CH 1K X7R/50V	EA	1.00
C	9	106-05102-0016	1553-5313-582	CAP CH 1K NPO/50V	EA	1.00
C	10	106-05102-0047	1553-5237-733	CAP CH 1K X7R/50V	EA	1.00
C	11	106-00116-0049	1564-2042-549	CAP CHIP PORCELAIN	EA	1.00
C	12	106-00116-0049	1564-2042-549	CAP CHIP PORCELAIN	EA	1.00
C	13	106-04104-0047	1553-5237-780	CH 100KX7R/50V	EA	1.00
C	14	106-05102-0016	1553-5313-582	CAP CH 1K NPO/50V	EA	1.00
C	15	106-05102-0016	1553-5313-582	CAP CH 1K NPO/50V	EA	1.00
C	16	106-05103-0046	1553-5237-794	CAP CH 10K X7R/50V	EA	1.00
C	17	106-05102-0016	1553-5313-582	CAP CH 1K NPO/50V	EA	1.00
C	18	106-05102-0047	1553-5237-733	CAP CH 1K X7R/50V	EA	1.00
C	19	106-05102-0047	1553-5237-733	CAP CH 1K X7R/50V	EA	1.00
C	20	106-00072-0012	1553-5313-582	CAP CH 10PF NPO/50V	EA	1.00
C	21	106-00072-0031	1553-5525-320	CAP CH 39PFNPO/50V	EA	1.00
C	22	106-00072-0010	1553-5313-551	CAP CH 8.2PFNPO/50V	EA	1.00
C	24	106-05102-0047	1553-5237-733	CAP CH 1K X7R/50V	EA	1.00
C	25	106-05102-0047	1553-5237-733	CAP CH 1K X7R/50V	EA	1.00
C	26	106-05104-0078	1553-5525-316	CAP CH 100KZ5U/50V	EA	1.00
C	28	106-05103-0046	1553-5237-794	CAP CH 10K X7R/50V	EA	1.00
C	29	106-05103-0046	1553-5237-794	CAP CH 10K X7R/50V	EA	1.00
C	30	106-05121-0016	1553-5313-503	CAP CH 120PFNPO/50V	EA	1.00
C	31	106-00072-0042	1553-5237-701	CAP CH 33PFNPO/50V	EA	1.00
C	32	106-05102-0047	1553-5237-733	CAP CH 1K X7R/50V	EA	1.00
C	33	106-04473-0048	1553-5237-782	CAP CH 47K X7R/50V	EA	1.00
C	34	106-04473-0048	1553-5237-782	CAP CH 47K X7R/50V	EA	1.00
C	35	106-05121-0016	1553-5313-503	CAP CH 120PFNPO/50V	EA	1.00
C	37	106-05103-0046	1553-5237-794	CAP CH 10K X7R/50V	EA	1.00
C	38	106-05661-0046	1553-5525-317	CH 560PF 7R/50V	EA	1.00
C	39	106-05121-0016	1553-5313-503	CAP CH 120PFNPO/50V	EA	1.00
C	40	106-05660-0016	1553-5237-767	CAP CH 56PFNPO/50V	EA	1.00
C	41	106-05122-0047	1553-5525-318	CAP CH 1200PPX7R/50V	EA	1.00
C	42	106-05222-0046	1553-5525-301	CAP CH 2.2KX7R/50V	EA	1.00
C	43	096-01186-0052	1552-6463-121	CAP 1.0UF 16V 20%	EA	1.00
C	44	106-00072-0016	1553-5313-504	CAP CH 15PFNPO/50V	EA	1.00
C	45	106-04104-0047	1553-5237-780	CH 100KX7R/50V	EA	1.00
C	46	106-00072-0018	1553-5237-777	CAP CH 18PFNPO/50V	EA	1.00
C	47	106-05102-0047	1553-5237-733	CAP CH 1K X7R/50V	EA	1.00
C	48	106-05102-0047	1553-5237-733	CAP CH 1K X7R/50V	EA	1.00
C	49	106-00072-0025	1553-5237-763	CAP CH 27PFNPO/50V	EA	1.00
C	50	096-01186-0052	1552-6463-121	CAP 1.0UF 16V 20%	EA	1.00
C	51	106-05102-0047	1553-5237-733	CAP CH 1K X7R/50V	EA	1.00
C	52	106-00072-0032	1553-5237-769	CAP CH 47PFNPO/50V	EA	1.00
C	53	106-00072-0036	1553-5237-789	CAP CH 68PFNPO/50V	EA	1.00
C	54	106-05102-0047	1553-5237-733	CAP CH 1K X7R/50V	EA	1.00
C	55	106-04104-0047	1553-5237-780	CH 100KX7R/50V	EA	1.00
C	56	106-05102-0047	1553-5237-733	CAP CH 1K X7R/50V	EA	1.00
C	57	106-00072-0032	1553-5237-769	CAP CH 47PFNPO/50V	EA	1.00
C	58	106-00072-0036	1553-5237-789	CAP CH 68PFNPO/50V	EA	1.00
C	59	106-00072-0036	1553-5237-789	CAP CH 68PFNPO/50V	EA	1.00
C	60	106-05102-0047	1553-5237-733	CAP CH 1K X7R/50V	EA	1.00
C	61	106-04104-0047	1553-5237-780	CH 100KX7R/50V	EA	1.00
C	62	106-00072-0032	1553-5237-769	CAP CH 47PFNPO/50V	EA	1.00
C	63	106-00072-0024	1553-5237-762	CAP CH 22PFNPO/50V	EA	1.00
C	64	106-00072-0032	1553-5237-769	CAP CH 47PFNPO/50V	EA	1.00
C	65	106-00072-0032	1553-5237-769	CAP CH 47PFNPO/50V	EA	1.00
C	66	106-00072-0024	1553-5237-762	CAP CH 22PFNPO/50V	EA	1.00
C	67	106-00072-0060	1553-5313-517	CAP CR CH 7.5PF	EA	1.00
C	68	106-00072-0069	1553-5313-522	CAP CH 5.2PFNPO/50V	EA	1.00
C	69	106-00072-0014	1553-5237-779	CAP CH 12PFNPO/50V	EA	1.00
C	70	106-00072-0058	1553-5525-314	CAP CR CH 5.1PF	EA	1.00

5 WATT RX/TX BOARD (FLEX)

200-08830-0000
PAGE 2

EPH

SYMBOL	OLD PART NO.	NEW PART NO.	DESCRIPTION	A	UM	EPH
C	71	106-00072-0014	1553-5237-779	CAP CH12PFNPO/50V	EA	1.00
C	72	106-00072-0000	1553-5525-315	CAPCH1.80FNPO/500V	EA	1.00
C	73	106-00072-0012	1553-5313-552	CAP CH10PF NPO/50V	EA	1.00
C	74	106-00072-0034	1553-5237-757	CAP CH 56PFNPO/50V	EA	1.00
C	75	106-05102-0016	1553-5313-582	CAP CH 1K NPO/50V	EA	1.00
C	76	106-05102-0047	1553-5237-733	CAP CH 1K X7R/50V	EA	1.00
C	77	096-01185-0064	1552-5463-113	CAP 10UF 16V 20%	EA	1.00
C	78	106-05103-0046	1553-5237-794	CAP CH 10K X7R/50V	EA	1.00
C	79	106-05272-0047	1553-5525-302	CAPCH2700PFX7R/50V	EA	1.00
C	80	106-04104-0047	1553-5237-780	CH 100KX7R/50V	EA	1.00
C	81	106-05102-0047	1553-5237-733	CAP CH 1K X7R/50V	EA	1.00
C	82	106-05103-0046	1553-5237-794	CAP CH 10K X7R/50V	EA	1.00
C	83	106-05103-0046	1553-5237-794	CAP CH 10K X7R/50V	EA	1.00
C	87	096-01185-0062	1552-5463-121	CAP 1.0UF 16V 20%	EA	1.00
C	88	106-00072-0004	1553-5313-523	CAP CH4.7PFNPO/50V	EA	1.00
C	89	106-00072-0058	1553-5525-314	CAP CR CH 5.1PF	EA	1.00
C	90	106-05104-0078	1553-5525-316	CAP CH 100KZ5U/50V	EA	1.00
C	91	106-00072-0004	1553-5313-523	CAP CH4.7PFNPO/50V	EA	1.00
C	92	106-05102-0047	1553-5237-733	CAP CH 1K X7R/50V	EA	1.00
C	93	106-05102-0047	1553-5237-733	CAP CH 1K X7R/50V	EA	1.00
C	94	106-05102-0047	1553-5237-733	CAP CH 1K X7R/50V	EA	1.00
C	95	106-05102-0047	1553-5237-733	CAP CH 1K X7R/50V	EA	1.00
C	96	106-05103-0046	1553-5237-794	CAP CH 10K X7R/50V	EA	1.00
C	97	106-05103-0046	1553-5237-794	CAP CH 10K X7R/50V	EA	1.00
C	98	106-05102-0047	1553-5237-733	CAP CH 1K X7R/50V	EA	1.00
C	99	106-05103-0046	1553-5237-794	CAP CH 10K X7R/50V	EA	1.00
C	100	106-05103-0046	1553-5237-794	CAP CH 10K X7R/50V	EA	1.00
C	107	106-00072-0012	1553-5313-552	CAP CH 10PF NPO/50V	EA	1.00
C	108	106-00072-0014	1553-5237-779	CAP CH 12PFNPO/50V	EA	1.00
C	109	106-00078-0010	1553-5525-341	CAP CERAMIC CHIP	EA	1.00
C	110	106-00078-0010	1553-5525-341	CAP CERAMIC CHIP	EA	1.00
C	111	106-00078-0010	1553-5525-341	CAP CERAMIC CHIP	EA	1.00
C	112	106-00078-0010	1553-5525-341	CAP CERAMIC CHIP	EA	1.00
C	113	106-05102-0047	1553-5237-733	CAP CH 1K X7R/50V	EA	1.00
C	114	106-05102-0047	1553-5237-733	CAP CH 1K X7R/50V	EA	1.00
CR	1	007-06418-0000	4824-2047-300	PIN DIODE	EA	1.00
CR	2	007-04134-0000	4809-2047-100	VARACTOR SET OF 4	EA	1.00
CR	6	007-06188-0000	4824-2008-600	DIO HOT CARRIER	EA	1.00
CR	7	007-06188-0000	4824-2008-600	DIO HOT CARRIER	EA	1.00
CR	8	007-06188-0000	4824-2008-600	DIO HOT CARRIER	EA	1.00
CR	9	007-06188-0000	4824-2008-600	DIO HOT CARRIER	EA	1.00
CR	13	007-06418-0000	4824-2047-300	PIN DIODE	EA	1.00
CR	14	007-06228-0001	4824-2021-600	SOT23 DIO MMBD352	EA	1.00
FL	1	017-00396-0000	2705-2022-600	XTAL FLTR 16.9MHZ	EA	1.00
FL	2	017-00108-0000	2700-2011-200	FLTR CR 455KHZ	EA	1.00
FL	3	017-00137-0000	2701-2047-600	DISCRIMINATOR CERL	EA	1.00
FL	4	017-00143-0000	2705-2022-600	XTAL FLTR, 16.9MHZ	EA	1.00
FL	4	017-00144-0000	2700-2022-900	CER FILTER, 455KHZ	EA	1.00
I	1	123-04066-0003	3134-2048-900	IC ANA/DIG SW	EA	1.00
I	2	120-03193-0000	3134-2005-500	IC FMIF MC3357D	EA	1.00
I	3	120-03473-0000	3134-2082-200	OP AMP	EA	1.00
ITM	1	008-08830-0000	1700-5706-400	PCBD SW30/12.5 R/T	A EA	1.00
ITM	4	091-00320-0000	3105-2001-200	INSUL TO-5	EA	1.00
ITM	5	075-01455-0001	5400-2027-501	ADAPTOR W/FN	A EA	1.00
ITM	8	016-01124-0002	1601-2000-903	FOAM TAPE .38W	IN	0.35
ITM	9	016-01124-0002	1601-2000-903	FOAM TAPE .38W	IN	0.35
ITM	10	016-01124-0002	1601-2000-903	FOAM TAPE .38W	IN	0.50
ITM	11	047-06735-0001	2508-2001-601	CAN DUAL COIL	EA	2.00
ITM	12	047-06707-0001	2508-2029-401	GROUND LUG XSTR	EA	1.00
ITM	14	047-04977-0002	2640-4000-202	PNGR STOCK .500	EA	1.00
ITM	15	047-10467-0001	2508-2029-701	SHIELD 30/12.5 RT	EA	1.00
ITM	16	025-00027-0000	6018-0000-001	WIRE CU3&AWG TIN	IN	0.18
J	1	030-01386-0001	2109-2017-401	SCKT MINATURE SPRG	EA	3.00
J	2	030-01386-0001	2109-2017-401	SCKT MINATURE SPRG	EA	10.00
J	3	030-00417-0000	2105-2017-300	20 DGR CONN RCPTBL	EA	1.00
L	1	019-02660-0048	1809-2013-648	INDUCT SURF MT	EA	1.00

5 WATT RX/TX BOARD (FLEX)

200-08830-0000
PAGE 3

EPH

SYMBOL	OLD PART NO.	NEW PART NO.	DESCRIPTION	A	UM	EPH
L	2	019-02701-0001	1800-2048-101	MOLDED INDUCT	EA	1.00
L	3	019-02701-0002	1800-2048-102	MOLDED INDUCTOR	EA	1.00
L	4	019-02701-0002	1800-2048-102	MOLDED INDUCTOR	EA	1.00
L	5	019-02701-0003	1800-2048-100	MOLDED INDUCTOR	EA	1.00
L	7	019-02660-0050	1808-2013-650	INDUCT SURF MT	EA	1.00
L	8	019-02660-0045	1808-2013-645	INDUCT SURF MT	EA	1.00
L	10	019-02660-0047	1808-2013-647	INDUCT SURF MT	EA	1.00
L	11	019-02660-0003	1808-2013-603	INDUCT SURFACE MT	EA	1.00
L	12	019-02660-0044	1808-2013-644	INDUCT SURF MT	EA	1.00
L	14	019-02660-0003	1808-2013-603	INDUCT SURFACE MT	EA	1.00
L	16	019-02660-0044	1808-2013-644	INDUCT SURF MT	EA	1.00
L	17	019-02660-0013	1808-2013-613	INDUCT SURFACE MT	EA	1.00
L	18	019-02404-0003	1801-2048-003	COIL 3T	EA	1.00
L	21	019-02660-0030	1808-2013-630	INDUCT 5M 1.5 10%	EA	1.00
L	22	019-02404-0005	1801-2048-005	4TX.070 24AWG	EA	1.00
L	23	019-02404-0003	1801-2048-003	COIL 3T	EA	1.00
L	24	019-02717-2004	1801-2023-307	COIL 4TX.120 #24	EA	1.00
L	25	019-02717-4804	1801-2023-306	COIL 4TX.146 #24	EA	1.00
L	26	019-02717-4204	1801-2023-305	COIL 4TX.142 #24	EA	1.00
Q	1	007-00943-0000	4823-2025-300	XSTR RF NPN	EA	1.00
Q	2	007-08064-0017	4823-2010-817	XSTR NPN 47K, 47K	EA	1.00
Q	3	007-08064-0016	4823-2010-815	TSTR DIGITAL 30	EA	1.00
Q	4	007-00529-0000	4823-2006-400	XSTR NPN MM8TH24	EA	1.00
Q	5	007-00942-0000	4823-2046-700	XSTR P-CH MOSFET	EA	1.00
Q	6	007-00187-0002	4823-3741-401	XSTR SOT-23 2N5089	EA	1.00
Q	7	007-00539-0000	4823-1367-900	XSTR MM8TH10	EA	1.00
Q	8	007-00907-0000	4823-2008-300	XSTR BFG17	EA	1.00
Q	9	007-00936-0000	4823-2046-600	PUR MOSFET N-CHNL	EA	1.00
Q	10	007-00545-0000	4804-2009-000	XSTR RF PWE 2N6255	EA	1.00
Q	11	007-00538-0000	4804-2008-900	XSTR RF POWER	EA	1.00
Q	12	007-08064-0014	4823-2010-814	XSTR PNP 4.7K, 10K	EA	1.00
Q	13	007-00943-0000	4823-2025-300	XSTR RF NPN	EA	1.00
Q	14	007-00982-0000	4823-2020-600	MSFET TETRODE N-CH	EA	1.00
Q	15	007-00982-0000	4823-2020-600	MSFET TETRODE N-CH	EA	1.00
Q	16	007-00982-0000	4823-2020-600	MSFET TETRODE N-CH	EA	1.00
Q	17	007-00982-0000	4823-2020-600	MSFET TETRODE N-CH	EA	1.00
Q	18	007-00982-0000	4823-2020-600	MSFET TETRODE N-CH	EA	1.00
Q	19	007-00982-0000	4823-2020-600	MSFET TETRODE N-CH	EA	1.00
Q	20	007-00982-0000	4823-2020-600	MSFET TETRODE N-CH	EA	1.00
Q	23	007-08064-0017	4823-2010-817	XSTR NPN 47K, 47K	EA	1.00
Q	24	007-00903-0000	4823-2025-100	2N7002 MOSFET	EA	1.00
Q	25	007-00982-0000	4823-2020-600	MSFET TETRODE N-CH	EA	1.00
Q	26	007-00982-0000	4823-2020-600	MSFET TETRODE N-CH	EA	1.00
R	1	130-05334-0013	4724-0334-233	RES CH 330K TW 5%	EA	1.00
R	2	130-05101-0013	4724-0101-233	RES CH 100 TW 5%	EA	1.00
R	3	130-05101-0013	4724-0101-233	RES CH 100 TW 5%	EA	1.00
R	4	130-05124-0013	4724-0124-233	RES CH 120K TW 5%	EA	1.00
R	5	130-05124-0013	4724-0124-233	RES CH 120K TW 5%	EA	1.00
R	7	130-05511-0023	4718-5317-149	RES CHIP 510 EW 5%	EA	1.00
R	8	130-05103-0013	4724-0103-233	RES CH 10K TW 5%	EA	1.00
R	9	130-05221-0023	4718-5237-323	RES CHIP 220 EW 5%	EA	1.00
R	10	130-05103-0013	4724-0103-233	RES CH 10K TW 5%	EA	1.00
R	11	130-05124-0023	4718-5237-359	RES CHIP 120KEW5%	EA	1.00
R	12	130-05124-0023	4718-5237-359	RES CHIP 120KEW5%	EA	1.00
R	13	130-05103-0023	4718-5237-310	RES CH 10K EW 5%	EA	1.00
R	14	130-09003-0000	4728-0019-945	RES CH 0.10 10% GS	EA	1.00
R	15	130-05273-0013	4724-0273-233	RES CH 27K TW 5%	EA	1.00
R	16	130-05222-0013	4724-0222-233	RES CH 2.2K TW 5%	EA	1.00
R	17	130-05104-0013	4724-0104-233	RES CH 100K TW 5%	EA	1.00
R	18	130-05301-0013	4724-0301-233	RES CH 300 TW 5%	EA	1.00
R	19	130-05183-0023	4718-5237-378	RES CHIP 18KEW5%	EA	1.00
R	20	130-05472-0023	4718-5237-303	RES CHIP 4.7KEW5%	EA	1.00
R	21	130-05101-0013	4724-0101-233	RES CH 100 TW 5%	EA	1.00
R	22	130-05753-0013	4724-0753-233	RES CH 75K TW 5%	EA	1.00
R	23	130-05202-0013	4724-0202-233	RES CH 2K TW 5%	EA	1.00
R	24	130-05202-0023	4718-5317-151	RES CHIP 2K EW 5%	EA	1.00
R	25	130-05473-0013	4724-0473-233	RES CHIP 47K TW 5%	EA	1.00
R	26	130-05152-0023	4718-5237-319	RES CHIP 1.5KEW5%	EA	1.00
R	28	133-00271-0008	4719-2046-208	RES VAS 2.2K 100V	EA	1.00
R	29	130-05392-0013	4724-0392-233	RES CH 3.9K TW 5%	EA	1.00
R	30	130-05471-0013	4724-0471-233	RES CH 470 TW 5%	EA	1.00
R	31	130-05154-0013	4724-0154-233	RES CH 150K TW 5%	EA	1.00

5 WATT RX/TX BOARD (FLEX)

200-08830-0000
PAGE 4

EPH

SYMBOL	OLD PART NO.	NEW PART NO.	DESCRIPTION	A	UM	EPH
R	32	130-05684-0023	4718-6237-334	RES CHIP 680KEW5%	EA	1.00
R	33	130-05474-0023	4718-6237-336	RES CHIP 470KEW5%	EA	1.00
R	34	130-05913-0013	4724-0913-233	RES CH 91K TW 5%	EA	1.00
R	35	130-05204-0023	4718-6237-382	RES CHIP 200KEW5%	EA	1.00
R	36	130-05682-0013	4724-0682-233	RES CHIP 6.6K TW 5%	EA	1.00
R	37	130-05202-0013	4724-0202-233	RES CH 2K TW 5%	EA	1.00
R	38	130-05151-0013	4724-0151-233	RES CH 150 TW 5%	EA	1.00
R	39	130-05101-0013	4724-0101-233	RES CH 100 TW 5%	EA	1.00
R	40	130-05102-0023	4718-6237-301	RES CH 1K EW 5%	EA	1.00
R	41	130-05271-0013	4724-0271-233	RES CH 270 TW 5%	EA	1.00
R	42	130-05100-0023	4718-6237-347	RES CH 10 EW 5%	EA	1.00
R	43	130-05202-0012	4724-0202-223	RES CH 2K TW 2%	EA	1.00
R	44	130-05753-0012	4724-0753-223	RES CH 75K TW 2%	EA	1.00
R	45	130-05753-0012	4724-0753-223	RES CH 75K TW 2%	EA	1.00
R	46	130-05202-0012	4724-0202-223	RES CH 2K TW 2%	EA	1.00
R	47	130-05022-0033	4728-0229-335	RES CHIP 2.2CW 5%	EA	1.00
R	48	130-05022-0033	4728-0229-335	RES CHIP 2.2CW 5%	EA	1.00
R	49	130-05101-0043	4729-0101-335	RES CHIP 100 HW	EA	1.00
R	50	130-05030-0033	4728-0030-335	RES CH 3.0 CW 5%	EA	1.00
R	51	130-05473-0013	4724-0473-233	RES CH 47K TW 5%	EA	1.00
R	52	130-05621-0033	4728-0621-335	RES CHIP 620 CW	EA	1.00
R	53	130-05334-0013	4724-0334-233	RES CH 330K TW 5%	EA	1.00
R	54	130-05102-0013	4724-0102-233	RES CH 1K TW 5%	EA	1.00
R	55	130-05220-0023	4718-6388-912	RES CHIP 22.5% EW	EA	1.00
R	56	130-05103-0023	4718-6237-310	RES CHIP 10K EW 5%	EA	1.00
R	57	130-05103-0013	4724-0103-233	RES CHIP 10K TW 5%	EA	1.00
R	58	130-05103-0013	4724-0103-233	RES CHIP 10K TW 5%	EA	1.00
R	59	130-05811-0013	4724-0511-233	RES CHIP 510 TW 5%	EA	1.00
R	60	130-05221-0013	4724-0221-233	RES CHIP 220 TW 5%	EA	1.00
R	64	130-05184-0013	4724-0184-233	RES CH 180K TW 5%	EA	1.00
R	65	130-05473-0013	4724-0473-233	RES CH 47K TW 5%	EA	1.00
R	66	130-05104-0013	4724-0104-233	RES CH 100K TW 5%	EA	1.00
R	81	130-05104-0013	4724-0104-233	RES CH 100K TW 5%	EA	1.00
R	82	130-05104-0013	4724-0104-233	RES CH 100K TW 5%	EA	1.00
R	83	130-05104-0013	4724-0104-233	RES CH 100K TW 5%	EA	1.00
R	84	130-05104-0013	4724-0104-233	RES CH 100K TW 5%	EA	1.00
R	85	130-05104-0013	4724-0104-233	RES CH 100K TW 5%	EA	1.00
R	86	130-05104-0013	4724-0104-233	RES CH 100K TW 5%	EA	1.00
R	87	130-05104-0013	4724-0104-233	RES CH 100K TW 5%	EA	1.00
R	88	130-05104-0013	4724-0104-233	RES CH 100K TW 5%	EA	1.00
R	89	130-05152-0013	4724-0152-233	RES CH 1.5K TW 5%	EA	1.00
R	90	130-05104-0013	4724-0104-233	RES CH 100K TW 5%	EA	1.00
R	91	130-05104-0013	4724-0104-233	RES CH 100K TW 5%	EA	1.00
R	92	130-05104-0013	4724-0104-233	RES CH 100K TW 5%	EA	1.00
R	93	130-05104-0013	4724-0104-233	RES CH 100K TW 5%	EA	1.00
R	94	130-05104-0013	4724-0104-233	RES CH 100K TW 5%	EA	1.00
R	95	130-05104-0013	4724-0104-233	RES CH 100K TW 5%	EA	1.00
R	96	130-05104-0013	4724-0104-233	RES CH 100K TW 5%	EA	1.00
R	97	130-05104-0013	4724-0104-233	RES CH 100K TW 5%	EA	1.00
R	98	130-05104-0013	4724-0104-233	RES CH 100K TW 5%	EA	1.00
REF	1	200-08830-0000	0008-5705-400	SW 30/12.5 RT ASY	RF	X
REF	2	002-08830-0000	0007-5705-400	SCH SW 30/12.5 RT	RF	X
T	1	019-08135-0000	1800-2013-200	XFMR MIXER	EA	1.00
T	2	019-08134-0000	1800-2048-300	XFMR IF T	EA	1.00
T	3	019-08133-0000	1800-2048-200	XFMR IF	EA	1.00
Y	1	044-00152-0000	2301-2011-600	XTAL 17.365MHZ	EA	1.00

