

# **VIEW 1**

## **user manual**

## Table of Contents

<b>Safety Information</b> .....	<b>4</b>
<b>Appearance and Key Function</b> .....	<b>6</b>
<b>Introduction</b> .....	<b>8</b>
<b>Call Functions</b> .....	<b>9</b>
<b>Contacts</b> .....	<b>11</b>
<b>Camera</b> .....	<b>18</b>
<b>Photos</b> .....	<b>20</b>

<b>Music .....</b>	<b>22</b>
<b>Alarm Clock.....</b>	<b>23</b>
<b>FM Radio.....</b>	<b>24</b>
<b>Google Play™ Store.....</b>	<b>25</b>
<b>Settings .....</b>	<b>26</b>
<b>Storage .....</b>	<b>31</b>
<b>Regulatory Information .....</b>	<b>32</b>

# Safety Information

Please carefully read the items below:

## **Use Safely**

Do not use the phone in situations where it might cause danger.

## **Transportation Safety**

Please observe all transportation laws and regulations.

Please drive with both hands on the wheel.

**DO NOT TEXT AND DRIVE**

## **Hospitals**

Please follow limitations.

Please turn off your mobile phone when near medical instruments.

## **Airports**

Remember to follow all airport and flight safety regulations.

Please do not use your phone during flight.

**Toxic Chemicals**

Do not use your mobile phone around fuels or chemicals.

**Hazard**

Do not use in hazardous areas where explosions may occur.

**Accessories and Batteries**

Use only Blu authorized batteries and accessories.

**Backup**

Remember to keep a written record of all important information.

**Water**

Your phone is not waterproof. Keep it away from water and liquids.

**SOS Emergency Calls**

Make sure your mobile phone is switched on and in a service area. In home screen, tap the phone key and dial 911 and send.

## Appearance and Key Function



**1. Volume up/down key**

**2. Power key**

**3. Receiver**

**4. Front camera**

**5. Led**

**6. Home key**

**7. Flashlight**

**8. Rear camera**

# Introduction

## Installation of the SIM Cards

**Note:** Please keep the SIM card out of the reach of children. The SIM card and its contacts are easily damaged due to scratching or bending. Please be cautious when carrying, installing or taking out the SIM cards. **SIM:** Contact your cellular phone service provider directly to obtain the SIM card.

### To insert SIM cards:



1. Remove the rear cover. Insert the SIM card.
2. Insert the MicroSD card. (*For additional storage capacity*)
3. Replace the rear cover of the phone and power on.

**MicroSD card Slot**

**SIM Slot**



## **Power On and Off**

---

**On** - Please ensure the SIM card has been properly inserted into the phone. Long press the Power key to switch on the phone.

**Off** - In standby mode, long press on Power key until an options menu appears. Select Power Off in the menu and confirm

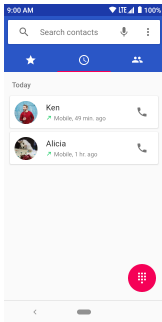
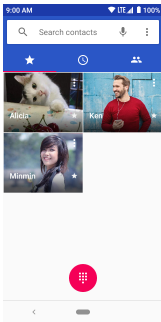
## **Security**

---

You may set a security lock feature as a security measure for the phone. For further information regarding password locks, password revision and other functions please enter into the security option in system settings.

# **Call Functions**

At the dial keyboard, enter the phone number and then click the dial key. If dialing an extension, you may click the dial pad icon in the bottom of the screen to open the interface and enter the number of the extension. You may also press and hold the 0 key to add a (+) sign when adding an international dialing prefix.



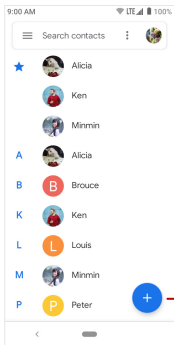
## **Call history**

Every telephone number called and received will be saved in the history. All numbers in the history can be dialed directly by clicking the CALL BACK on the screen. When the number appears on the list, click it to view details.

## **Call Options**

There are different options that can be used in the history and dialing interface. You may press the MORE while in the dial interface and adjust speed dial and call settings.

In the dialing interface, you may press the search button to browse through contacts list or set default contact resources.



## Contacts

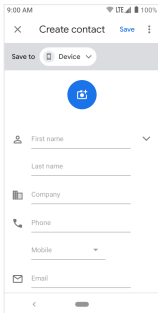
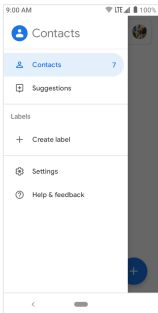
**Enter:** Click on the applications menu and select contacts.

- The default display is the phone contacts and SIM card contacts.
- The contacts are organized alphabetically by default.

Click the Search icon to enter the contact search interface.

- Any numbers or letters associated with any of the contacts
- saved in the list will be shown in the search results.

**Add Contact**

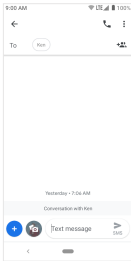


## **Add New Contact**

1. Click the add contact icon (+) to add contact.
2. You may enter different contact details which include adding a picture, name, telephone number, group, address, and email among other options.
3. Click to finish and save contact.

# Messages

You may use this function to exchange text messages and multimedia messages with your family and friends. The messages to and from the same contact or phone number will be saved into a single conversation so you may see the entire message history conveniently.



## **Send an SMS**

---

Application Menu » Messaging » New message (or shortcut icon)

1. Click to enter recipient (You may enter contacts from contact book or enter a new number)
2. Compose Message
3. Send

## **Send an MMS**

---

When creating message, the default message style is SMS. The message will automatically convert to MMS when adding an attachment.

1. Click the attachment icon in the messaging interface.
2. Click to add attachments and create an MMS message.

# Internet Browser

## **Menu Functions**

---

### Backward

- After browsing through multiple pages, this option will return the user to the previous page.

### Forward

- After browsing through multiple pages, this option will move to a web page after the current page.

### Windows

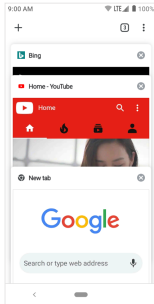
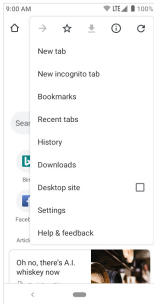
- You may view all windows open by clicking the windows icon in the upper right part of the browser.

### Pentacle icon

- Click ☆ to make the current URL as a saved Bookmark.

### Bookmark

- Click Bookmarks to opened saved bookmarks.

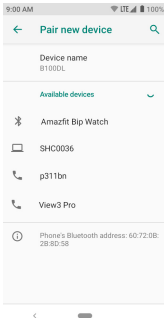


**Find on page:** Search current page.

**Share ...:** Select to share the current page.

**History:** Show your browsing history and view the most visited pages.

**Settings:** Contains a variety of browser settings.



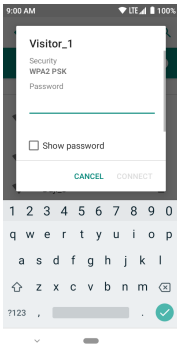
## Bluetooth & Wi-Fi

Bluetooth is a short-range wireless communications technology that devices can use to exchange information and connect to different types of devices which include headsets and other devices.

### Power on Bluetooth

- 1) Settings » Bluetooth and select to power on Bluetooth.
- 2) The Bluetooth icon will appear in the notification bar. Click "Pair new device" and the phone will start to scan for all devices within range.
- 3) In Bluetooth settings all the devices found will displayed in the list under the icon.





## **Power on Wi-Fi**

---

1) Settings » Network & Internet » Wi-Fi and select ON to power on Wi-Fi

2) Click on the desired Wi-Fi network to be connected.

*Unsecured networks can be connected to directly - secured networks require a password or credentials prior to connection.*

# Camera

## Camera

---

**Prior to use:** Insert SD card before using the camera or video camera. All photos or videos taken by the phone are typically stored in the memory card for large storage capacity of images.

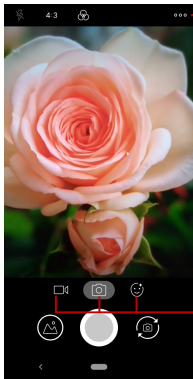
### Open Camera

1. Applications Menu » Camera
2. Switch to video mode if you want to record videos.
3. Switch to Face beauty mode if you want to take beautified photo of people.

**Note:** *You may place a camera shortcut icon on any of the screens*

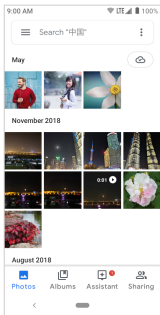
### Take Pictures

1. Aim the object that the picture will be taken.
2. Press the “Shutter” button on the screen.
3. After taking the picture, the file will be saved in the camera’s gallery folder.
4. You can view the photos by clicking the preview box button.
5. You may adjust various settings for the camera by pressing Menu while in the camera interface.



**Settings**

**Select between  
Camera & Video & Face Beauty**



# Photos

## Open Images

---

Applications Menu » Photos

## Share Pictures

---

You may share pictures by sending them through different types of installed applications. You may also send pictures through the MMS message function by composing a message and attaching the picture. Any image can also be sent via the Bluetooth function by selecting Bluetooth equipment that has been paired.

## **Adjust Image**

---

Press Menu and Edit to adjust images

You may select from different effects that may include: Vintage, Black and White, Instant, Latte, Litho, X-Process, Crop, Rotate, Mirror, Straighten, Vignette, Contrast, Exposure, Auto color, Shadows, Vibrancy, among other settings that can be used to adjust picture images.

## **View Images**

---

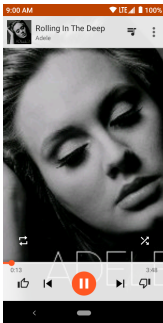
In the picture interface, click on an album to view images

In the photo album, scroll the picture towards left to view the next picture or towards right to view the previous one.

## **Crop Pictures**

---

If you want to adjust the size of the picture, use the crop tools. Once the arrow appears, pinch your fingers in or out to adjust the size. If you want to adjust the image and keep its proportion, please hold down any of the four corners of the image and adjust accordingly.



# Music

## Open Music

---

Application Menu »Play Music

## Search Music

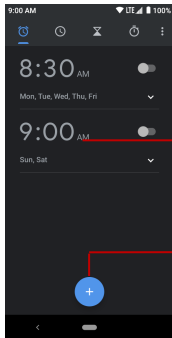
---

You may choose to search for music from media folder through artist name, song name, album name. **The following formats are available:** AMR, MIDI, MP3, WAV, and OGG.

Song Status

Track Controls

# Alarm Clock



1. Click on the Clock icon in the application menu
2. Click set alarm button and enter the alarm clock set interface where you may delete and edit alarms

**Click to edit alarms**

**Click to add alarms**



# FM Radio

## **FM Radio**

Through this function, you may listen to FM radio on the device. The FM radio uses the wired headphones as an antenna in order to receive signal. Before using this function, connect the original equipment headphones that came with the phone.

## **Open FM Radio**

Press the FM radio icon to open the application.

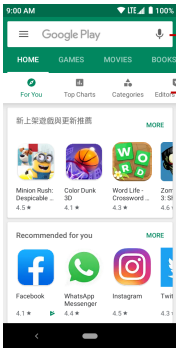
## **FM Radio as Background**

Click on the Home key to move the FM radio to the background.



# Google Play™ Store

Google Play™ allows you to download music, movies, and even games. Click the Play icon to sign in with your Google™ account.



Search and select between different Play Store categories

# Settings



## Network & Internet

- **Settings » Network & Internet » Wi-Fi** to power on. When on, the Wi-Fi will automatically search for available networks. Any unsecured network can be used directly and any secured network requires a password or credentials prior to connection.
- **Settings » Network & Internet » SIM cards** to power on. When insert two cards, click to set cellular data, calls, SMS messages
- Tethering, Portable Hotspot, VPN, APN
- Airplane Mode

***Note:** When in flight mode, all network connections will turn off automatically.*



## Connected devices

- **Settings » Connected devices » Bluetooth** to power on. Once on, the Bluetooth will automatically scan for any nearby open equipment.



### **Apps & notifications**

- Manage applications - Manage and delete installed applications.
- Running services - Press the 'Force Stop' button to stop any of the services listed and removes from the running services list.



### **Battery**

- General power usage



### **Display**

- Brightness, Auto rotating screen, Wallpaper, Screen Timeout



### **Sound**

This option sets the phone tone settings for receiving calls and notifications. Some of the settings include:

- Vibrate, volume, ring tones, ring tones notification, dial touchpad, and haptic feedback and tones



## Storage

- View the phone memory usage.



## Security & location

Set up screen locks: Use slide, pattern, PIN or password to lock the screen.

- Pattern: The first time there will be simple unlock instructions and examples. Click “next step” to continue the security pattern step.
- PIN: Enter PIN number to unlock the screen.
- Password: Use password to unlock the screen

**Note:** *You may stop the security feature at any time.*

- Mobile Network Location - Use wireless services to find locations in applications.
- When using the GPS, power on to set satellite positioning for accuracy.



## Users & Accounts

- Add accounts, include Exchange、Google™、IMAP、Personal (IMAP)、Personal (POP3)、POP3



## Accessibility

- Power button ends call and auto rotate screen
- Speak Passwords and large text



## Google™

- Some settings of Google™ services, this services about Ads, Location, Nearby, Search & Now, Security and Set up nearby device

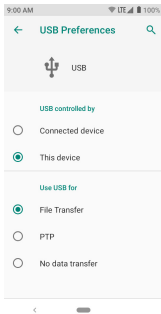
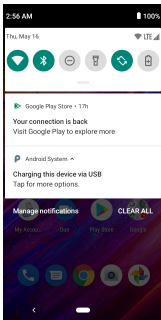


## System

- Language – Change the language of the phone.
- Keyboard Settings – Haptic vibration, Haptic tones, Capitalizing, Speech Input, Inputting words, Predictive text function, Auto-Text, Input keyboard method
- Backup Data – Will back up all application data, WLAN passwords, and other settings to Google's servers
- Restore to Factory Settings - Clear all data stored on the phone.
- Date and Time adjustment.

- Select Date Format - There are 3 kinds of formats you can choose from: Month-Day-Year, Day-Month-Year and Year-Month-Day, and Year-Month-Day which is the default setting
- Phone information status and firmware updates

# Storage



Connect the phone with the USB cable provided. Once connected, a connection notification will appear. In the connection mode interface, select "File Transfer" to be able to transfer files. Other storage options are also available.

Some system settings, hardware, and UI options may vary depending on final version.

# Regulatory Information

## **FCC Rules Compliance**

---

### **(United States Federal Communications Commission)**

This mobile phone complies with part 15 of the FCC Rules. Operation is subject to the following two conditions: (1) This device may not cause harmful interference, and (2) this device must accept any interference received, including interference that may cause undesired operation.

This mobile phone has been tested and found to comply with the limits for a Class B digital device, pursuant to Part 15 of the FCC Rules. These limits are designed to provide reasonable protection against harmful interference in a residential installation. This equipment generates uses and can radiate radio frequency energy and, if not installed and used in accordance with the instructions, may cause harmful interference to radio communications. However, there is no guarantee that interference will not occur in a particular installation if this equipment does cause harmful interference to radio or television reception, which can be determined by turning the equipment off and on, the user, is encouraged to try to correct the interference by one or more of the following measures:

- Reorient or relocate the receiving antenna.
- Increase the separation between the equipment and receiver.



- Connect the equipment into an outlet on a circuit different from that to which the receiver is connected.
- Consult the dealer or an experienced radio/TV technician for help.

Changes or modifications not expressly approved by the party responsible for compliance could void the user's authority to operate the equipment. The antenna(s) used for this transmitter must not be co-located or operating in conjunction with any other antenna or transmitter.

### **RF Exposure Information (SAR)**

---

This mobile phone meets the government's requirements for exposure to radio waves.

This phone is designed and manufactured not to exceed the emission limits for exposure to radio frequency (RF) energy set by the Federal Communications Commission of the U.S. Government.

The exposure standard for wireless mobile phones employs a unit of measurement known as the Specific Absorption Rate, or SAR. The SAR limit set by the FCC is 1.6W/kg - Tests for SAR are conducted using standard operating positions accepted by the FCC with the

phone transmitting at its highest certified power level in all tested frequency bands. Although the SAR is determined at the highest certified power level, the actual SAR level of the phone while operating can be well below the maximum value. This is because the phone is designed to operate at multiple power levels so as to use only the power required to reach the network. In general, the closer you are to a wireless base station antenna, the lower the power output.

The highest SAR value for the model phone as reported to the FCC when tested for use at the ear is 1.12 W/kg and when near the body, as described in this user guide, is 1.44 W/kg (*near the body measurements differ among phone models, depending upon available accessories and FCC requirements.*) While there may be differences between the SAR levels of various phones and at various positions, they all meet the government requirement.

The FCC has granted an Equipment Authorization for this model phone with all reported SAR levels evaluated as in compliance with the FCC RF exposure guidelines.

SAR information on this model phone is on file with the FCC and can be found under the Display Grant section [www.fcc.gov/oet/ea/fccid](http://www.fcc.gov/oet/ea/fccid) after searching - **FCC ID: YHLBLUB100DL.**

For body worn operation, this phone has been tested and meets the FCC RF exposure guidelines for use with an accessory that contains no metal and the positions the handset a

minimum of 1.5cm from the body. Use of other accessories may not ensure compliance with FCC RF exposure guidelines.

### **Safety precautions for power supply unit**

---

#### **Use the correct external power source**

A product should be operated only from the type of power source indicated on the electrical ratings label. If you are not sure of the type of power source required, consult your authorized service provider or local power company. For a product that operates from battery power or other sources, refer to the operating instructions that are included with the product.

This product should be operated only with the following designated power supply unit(s).

Travel charger: Input: 100-240V, 50/60Hz, 0.15A. Output: 5V, 1000mA

#### **Handle battery packs carefully**

This product contains a Lithium-ion battery. There is a risk of fire and burns if the battery pack is handled improperly. Do not attempt to open or service the battery pack. Do not disassemble, crush, puncture, short circuit the external contacts or circuits, dispose of in fire or water, or expose a battery pack to temperatures higher than 113°F (45°C). The operating temperature for the phone is 0°F (0°C) to 113°F (45°C).

***Warning: Danger of explosion if battery is incorrectly replaced.***

To reduce risk of fire or burns, do not disassemble, crush, puncture, short circuit the external contacts, expose to temperature above 113°F (45°C), or dispose of in fire or water. Replace only with specified batteries. Recycle or dispose of used batteries according to the local regulations or reference guide supplied with your product.

Take extra precautions

- Do not disassemble or open crush, bend or deform, puncture or shred.
- Do not short circuit a battery or allow metallic conductive objects to contact battery terminals.
- The phone should only be connected to products that bear the USB-IF logo or have completed the USB-IF compliance program.
- Do not modify or remanufacture, attempt to insert foreign objects into the battery, immerse or expose to water or other liquids, expose to fire, explosion or other hazard.
- Battery usage by children should be supervised.
- Only use the battery for the system for which it is specified.
- Only use the battery with a charging system that has been qualified with the system per CTIA Certification Requirement for Battery System Compliance to IEEE1725. Use of an

unqualified battery or charger may present a risk of fire, explosion, leakage or other hazard.

- Replace the battery only with another battery that has been qualified with the system per this standard, IEEE-Std-1725. Use of an unqualified battery may present a risk of fire, explosion, leakage or other hazard.
- Promptly dispose of used batteries in accordance with local regulations.
- Avoid dropping the phone or battery. If the phone or battery is dropped, especially on a hard surface, and the user suspects damage, take it to a service center for inspection.
- Improper battery use may result in a fire, explosion or other hazard.
- If the battery leaks:
  - o Do not allow the leaking fluid to come in contact with skin or clothing. If already in contact, flush the affected area immediately with clean water and seek medical advice.
  - o Do not allow the leaking fluid to come in contact with eyes. If already in contact, DO NOT rub; rinse with clean water immediately and seek medical advice.
  - o Take extra precautions to keep a leaking battery away from fire as there is a danger of ignition or explosion.

## **Hearing Aid Compatibility (HAC) for Wireless Telecommunication Devices**

**This phone has a HAC rating of M3/T4.**

### ***What is hearing aid compatibility?***

The Federal Communications Commission has implemented rules and a rating system designed to enable people who wear hearing aids to more effectively use these wireless telecommunications devices. The standard for compatibility of digital wireless phones with hearing aids is set forth in American National Standard Institute (ANSI) standard C63.19. There are two sets of ANSI standards with ratings from one to four (four being the best rating): an "M" rating for reduced interference making it easier to hear conversations on the phone when using the hearing aid microphone, and a "T" rating that enables the phone to be used with hearing aids operating in the tele-coil mode thus reducing unwanted background noise.

### ***How will I know which wireless phones are hearing aid compatible?***

The Hearing Aid Compatibility rating is displayed on the wireless phone box. A phone is considered Hearing Aid Compatible for acoustic coupling (microphone mode) if it has an "M3" or "M4" rating. A digital wireless phone is considered Hearing Aid Compatible for inductive coupling (tele-coil mode) if it has a "T3" or "T4" rating.

### **Additional Information**

---

The information provided in this user manual is subject to change without notice and BLU Products reserves the right to modify the manual at any given time. BLU Products has made every effort to ensure that this user manual is accurate and disclaims responsibility and liability for any inaccuracies or omissions. BLU Products makes no commitment to keep current the user manuals, however, does reserve the right to make improvements to the user manual at any given time without notice.

Google, Google Play and other marks are trademarks of Google LLC