

**C6L**

**USER MANUAL**

FCC ID: YHLBLUC6L

# Table of Contents

Safety Information .....	4
Appearance and Key Function.....	7
Introduction.....	9
Call Functions .....	11
Notifications Bar.....	13
Contacts .....	15
Messaging .....	17
Bluetooth & Wi-Fi.....	18
Downloads .....	22
Opera Mini .....	23

Gmail .....	22
Play Store.....	23
Camera.....	24
Music .....	27
FM Radio .....	29
Sound Recorder.....	30
File Manager .....	32
Calendar.....	32
Alarm Clock .....	34
Settings .....	35
Storage .....	40
Troubleshooting .....	41

# Safety Information

Please carefully read the terms below:

## Use Safely

Do not use the phone in situations where it might cause danger.

## Transportation Safety

Please observe all transportation laws and regulations.

Please drive with both hands on the wheel.

**PLEASE DRIVE RESPONSIBLY - DO NOT TEXT AND DRIVE**

## Hospital Safety

Please follow hospital rules and limitations.

Please turn off your mobile phone when near medical instruments.

## Airport Safety

Remember to follow all airport and flight safety regulations.

Please do not use your phone during flight.

## Chemical Warning

Do not use your mobile phone around fuels or chemicals.

## **Temperature Warning**

Do not subject your phone to extreme temperature conditions.

## **Water Hazard**

Your phone is not waterproof. Keep your phone away from water or liquid to avoid damage.

## **Emergency Calls**

Make sure your mobile phone is switched on and in a service area. In home screen, tap the phone key and dial the emergency number.

## **Accessories and Batteries**

Use only Blu authorized batteries and accessories.

## **Information Backup**

Remember to keep a written record of all important information.

## **Battery Safety and Precautions**

- For better performance and longer battery life, it is recommended that you charge the battery fully before using the mobile phone for the first time.
  - The optimum performance of a new battery is typically achieved after two or three complete charge cycles.
- Note:** Keep in mind that continuous overcharging will affect long term battery life.
- While charging, keep the mobile phone out the reach of children.
  - Store the battery in a cool and dry place away from direct sunlight and water.

- Do not expose batteries to extreme temperatures (below -20°C or above 60°C .
- Immediately stop using the battery if it produces an odor, cracks and leaks, overheats, distorts or has any other type of physical damage.
- Avoid using the charger near or around liquids. If the charger comes in contact with water or any liquids, immediately unplug it from the outlet to reduce the risk of overheating, charger malfunction, electric shock or fire.

**Warning:** Please be careful with the disposal of used batteries. Do not throw away batteries with daily waste. Please follow local environmental laws and guidelines for proper waste disposal.

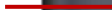
### **Cleaning and Maintenance**

- Avoid using the handset and accessories in excessively moist areas to avoid malfunction.
- Use a soft, dry cloth to clean the handset, battery and charger.
- Do not use alcohol, thinner, benzene or any other solvent to clean the handset.

# Appearance and Key Function



**Rear Camera**



**Flash**



**BLU**

**Speaker**





# Introduction

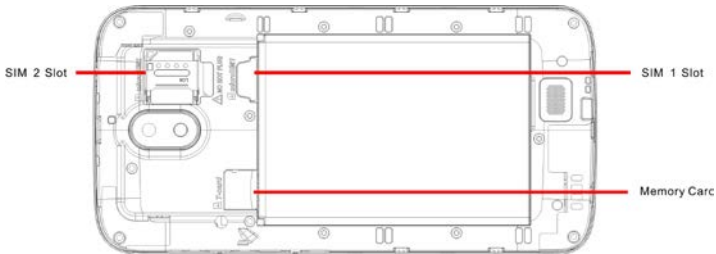
## Installation of the SIM Card

---

**Warning:** Please keep the SIM card out of the reach of children. The SIM card and its contact are easily damaged due to scratching or bending. Please use caution when carrying, installing or taking out the SIM card. **NB:** Please contact your cellular phone service provider directly to obtain your SIM card.

### **To insert SIM card:**

1. Remove the rear cover. Insert the SIM card.
2. Insert the SD card. (For additional storage capacity)
3. Insert the battery, replace the rear cover, and power on phone.



## **Power On and Off**

**On** - Please ensure the SIM card has been properly inserted into the phone. Long press the Power key to switch the phone on.

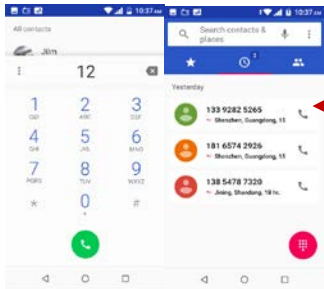
**Off** - In standby mode, long press on Power key until an options menu appears. Select Power Off in the menu and confirm in the pop-up prompt to switch off the phone.

## **Security**

You may set a security lock feature as a security measure for the phone. For further information regarding password locks, password revision and other functions please enter into the security option in system settings.

## Call Functions

At the dial keyboard, enter the phone number and then click the dial key. If dialing an extension, you may click the dial pad icon in the bottom of the screen to open the interface and enter the number of the extension. You may also press and hold the 0 key to add a (+) sign when adding an international dialing prefix.



Call Log History

## **Call Logs**

---

Every telephone number called and received will be saved in the phones call log. All numbers in the call log can be dialed directly by clicking the dial icon on the screen. When the number appears on the list, click it to view details. To clear the call logs, press the menu key and select delete. You may remove one or multiple calls.

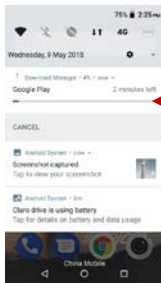
## **Call Options**

---

There are different options that can be used in the call log and dialing interface. You may press the menu key while in the dial interface and adjust call settings. In the call logs, you may press browse through contacts list or set default contact resources.

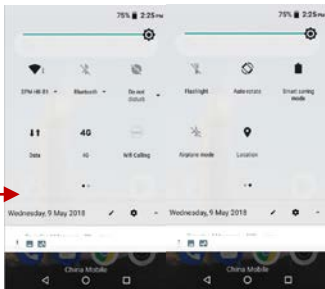
# **Notifications Bar**

The notification bar is located on the top of the screen which contains useful and important information regarding your phone and the applications that are installed. On the notification bar, several icons will appear such as signal bar, battery indicator, data indicator, Bluetooth and Wi-Fi. You may slide the notification bar down with your finger to display any pending notifications or actions.



Pending  
Notifications and  
Applications

Quick  
Notification  
Settings



## Notification Settings

---

The notification settings window provides shortcuts to different phone settings for quick access. Click on any of the shortcut notification icons to power on or off.

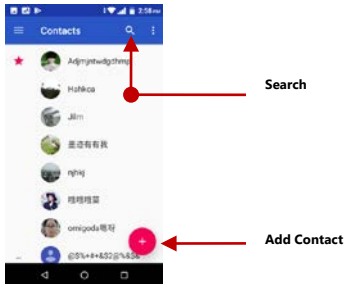
**Note:** To clear notifications, drag down the notification bar and click the clear notification icon on the upper right hand part of the screen (3 horizontal lines). The notification settings menu is located by dragging down the notification bar and is located on the upper right hand part of the screen next to the clear notification icon.

# Contacts

**Enter:** Click on the applications menu and select contacts.

- The default display is the phone contacts.
- The contacts are organized alphabetically by default.

After signing in to your Google account, Google contacts will be displayed in sync.



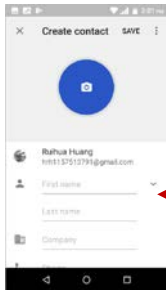
Click the Search icon to enter the contact search interface. Any numbers or letters associated with any of

the contacts saved in the list will be shown in the search results.

## **Add New Contact**

---

- Click the add contact icon (+) to add contact.
- Save your contacts to your Google account.
- You may enter different contact details which include adding a picture, name, telephone number, group, address, and email among other options.
- Click to save contact.



**Contact  
information entry  
field**



## **Delete Contact**

---

- Click on the Contacts icon to enter the phonebook.
- Click the menu key to access the Contacts menu.
- Click on Delete Contact and scroll to select which contact(s) you wish to delete.

**Note:** You may also search for an individual contact in the phonebook. Once the contact is found click the contact name to enter the contact profile, press the menu key to bring up the contact menu and select delete to eliminate from the phonebook.

## **Messaging**

You may use this function to exchange text messages and multimedia messages with your family and friends. The messages to and from the same contact or phone number will be saved into a single conversation so you may see the entire message history conveniently.

### **Send an SMS**

---

Application Menu » Messaging » New message (or shortcut icon)

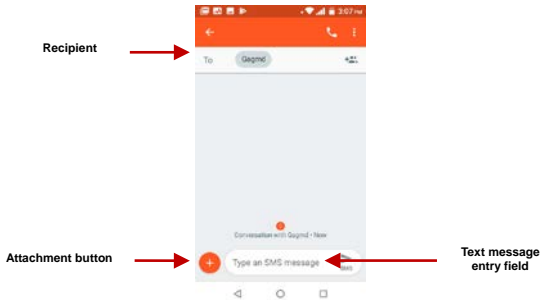
- Click the contact icon to enter text message recipient
- Compose Text Message and click Send

### **Send an MMS**

---

When creating message, the default message style is SMS.

- Click the attachment icon in the messaging interface.
- Click to add attachments and create an MMS message.



## Bluetooth & Wi-Fi

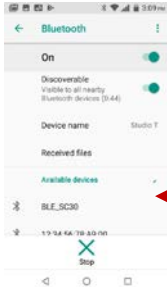
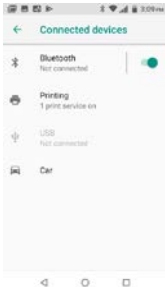
Bluetooth is a short-range wireless communications technology that devices can use to exchange information and connect to different types of devices which include headsets and other devices.

### **Power on Bluetooth**

---

Settings » Connected devices and select to power on Bluetooth.

- The Bluetooth icon will appear in the notification bar. The Bluetooth will then start to scan for all devices within its range and will display all available devices in a list.
- In Bluetooth settings, all the devices found will displayed in a list.



**Note: The maximum detecting time of the phone is 2 minutes.**

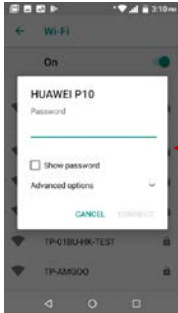
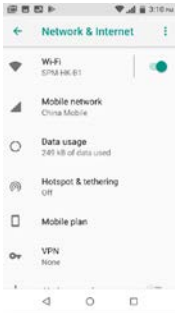
**List of available Bluetooth devices**

## **Power on Wi-Fi**

Settings » Network & Internet and select ON to power on Wi-Fi

- Click on the desired Wi-Fi network to be connected.

**Note:** Unsecured networks can be connected to directly - secured networks require a password or credentials prior to connection.

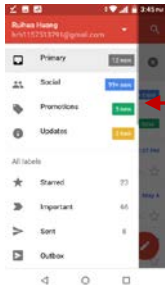


List of available networks  
and the network  
connection screen

# Gmail

Gmail is Google's free email service. To access the Gmail program, click the applications menu and click on the Gmail icon and either sign in with your existing account or create a new one.

**Note:** In order to keep accounts streamlined with Google services, your Gmail account user name and password will be used for some Google programs which include: Google Play Store, Google Drive, Google +, Google Photos, and Google Wallet.



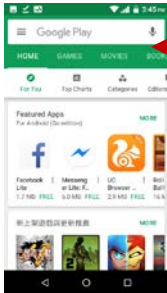
The Gmail inbox is separated by default in three different categories.

These categories include primary inbox, social inbox where all your Facebook, Twitter, and social media emails are separated to and your Promotions inbox where all your commercial emails are separated.

You may add or delete other categories in Gmail settings

# Play Store

Google Play allows you to download music, movies, and games directly to your device. To access the Google Play Store, click on the applications menu and then the Play Store icon.



**Search and select between  
different Play Store  
categories**

# Camera

**Prior to use:** Insert SD card before using the camera or video camera. All photos or videos taken by the phone are typically stored in the memory card for large storage capacity of images and videos.

## Open Camera

Click the Applications Menu » Camera

→ Switch to video mode if you want to record videos.

**Note:** *You may place a camera shortcut icon on any of the screens*

## Take Pictures

Aim the object that the picture will be taken.

- Press the Shutter button on the screen to capture image.
- After taking the picture, the file will be saved in the cameras gallery folder.
- You can view the photos by clicking the preview box button.

You may adjust various settings for the camera by slide right into the settings menu while in the camera interface. When in the standard camera mode, you can switch to video to record or click the gallery preview box.





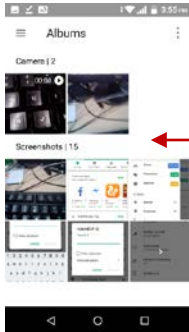
**Slide right into camera  
Options**

**Select between  
Camera & Video**

# Gallery

## Open Images

Applications Menu » Gallery



**Pictures and videos  
are stored in  
separate albums**

## **Share Pictures**

---

You may share pictures by sending them through different types of installed applications. You may also send pictures through the MMS message function by attaching a picture and also via Bluetooth.

## **Adjust Image**

---

Press Menu and select edit to adjust images. You may select from different effects that may include: Vintage, Black and White, Instant, Latte, Litho, X-Process, Crop, Rotate, Mirror, Straighten, Vignette, Contrast, Exposure, Auto color, Shadows, and Vibrancy.

## **Crop Pictures**

---

Click menu and crop to adjust the size of the picture. Once the picture appears, pinch your fingers in or out to adjust the size. To keep proportion, hold down any of the four corners of the image and adjust.

# **Music**

## **Open Music**

---

Application Menu » Music



## Search Music

You may choose to search for music from media folder through artist name, song name, album name. **The following formats are available:** AMR, MIDI, MP3, WAV, and OGG.

# FM Radio

## **FM Radio**

---

Through this function, you may listen to FM radio on the device. The FM radio uses the wired headphones as an antenna in order to receive signal. Before using this function, connect the original equipment headphones that came with the phone.

## **Open FM radio**

---

Press the FM Radio icon to open the application.

Click to scan FM channels automatically then click to add any of your favorite radio stations.



### **FM Radio as Background**

Click on the Home key to move the FM Radio to the background.

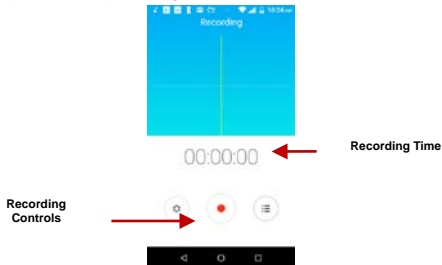
## **Sound Recorder**

You may send any recorded audio via Bluetooth or MMS and also have the option to make any recorded audio the phones default ring tone. The recorder uses MP3,3GPP and AMR format.

## Record

---

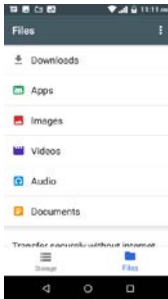
- Keep the phone's microphone near the sound source.
- Click the record button to record the audio.
- Click the stop button to stop recording the audio.



**Note:** All recordings are typically saved in the SD card folder.  
Please ensure the SD card is installed prior to recording.

# File Go

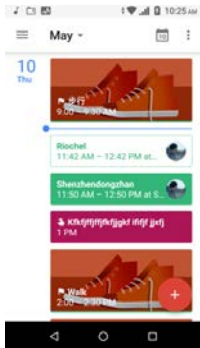
The file manager allows you to organize your stored phone files conveniently and efficiently through one program.



# Calendar



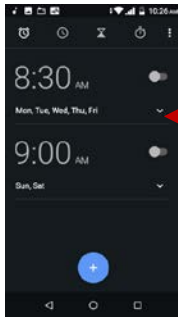
The calendar helps keep track of your life's most important moments in one application.



# Alarm Clock

Click on the Clock icon then click the alarm tab to enter the alarm clock interface.

This option allows you to add and edit alarms.



Click to add, edit or delete alarms

# Settings

## Wireless & Networks

---



### Wi-Fi

- **Settings » Wi-Fi** to power on. When on, the Wi-Fi will automatically search for available networks. Any unsecured network can be used directly and any secured network requires a password or credentials prior to connection.



### Bluetooth

- Power on Bluetooth. Once on, Bluetooth will automatically scan for any nearby open devices.
- Click to connect device.



### Data Usage

- Mobile and Wi-Fi Data Usage

### More Wireless & Networks

- Tethering, Portable Hotspot, VPN, APN
- Airplane Mode

**Note:** When in flight mode, all network connections will turn off automatically.



## Audio Profiles

This option sets the phone ring tone settings for receiving calls and notifications. Some of the settings include:

- Vibrate, volume, ring tones, ring tones notification, dial touchpad, and haptic feedback and tones



## Display

- Brightness, Auto rotating screen, Wallpaper, Screen Timeout



## Storage

- View the phone memory usage



## Battery

- General power usage



## Apps

- Manage applications - Manage and delete installed applications
- Running Applications- Press the 'Force Stop' button to stop any of the applications listed and removes from the running apps list.



## Location

- High Accuracy – Use GPS, Wi-Fi and Mobile Networks
- Battery Saving – Use Wi-Fi and Mobile Networks
- Device Only – Use GPS only to determine location

**Note:** GPS is dependent on phone hardware.



## Security

Set up basic screen locks: Use slide, pattern, PIN or password to lock the screen.

- Pattern: The first time there will be simple unlock instructions and examples. Click “next step” to continue the security pattern step
- PIN: Enter PIN number to unlock the screen
- Password: Use password to unlock the screen

*You may stop the security feature at any time.*

## Set up SIM card PIN lock

- SIM card PIN (Personal Identification Number) is used to prevent unauthorized use of SIM card.

To change a blocked PIN code, you will need to unlock the SIM lock then go to the Change Password screen. The phone will automatically prompt you enter the old PIN code and ask to enter a new PIN code twice. The phone will then prompt you that the change was successful. If you enter the PIN incorrectly three

times, the SIM and PIN codes will be automatically locked. You will need the PUK code to unlock the phone which is available through your service provider. If you enter the PUK code incorrectly 10 times, the SIM card will be permanently locked. Please see your service provider for a new SIM card

- Password visible – Make the password visible when it's typed
- Use security credentials - Allow applications to visit security credentials or other credentials



### Language and Input

- Language – Change the language of the phone
- Custom Dictionary - Add or delete words to the custom dictionary



### Backup & Reset

- Backup Data – Will back up all application data, WLAN passwords, and other settings to Google's servers
- Restore to Factory Settings - Clear all data stored

---

## System



### Date & Time

- Date and Time adjustment.
- Select Date Format - There are 3 kinds of formats you can choose from: Month-Day-Year,

Day-Month-Year and Year-Month-Day, and Year-Month-Day which is the default setting



### **Schedule Power On & Off**

- Schedule power on and off



### **Accessibility**

- Power button ends call and auto rotate screen
- Speak Passwords and large text



### **Printing**

- You may print files via Cloud Ready printers.  
(Please check Google Cloud Print website for printer compatibility information)



### **Developer Options**

If the phone does not display Developer options press “build number” seven (7) times in the about phone tab in settings.

- The developer option gives access to USB Debugging and other developer options

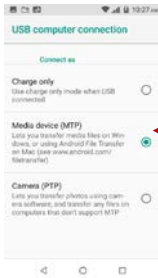


### **About Device**

- Phone information status and firmware updates

# Storage

Connect the phone with the USB cable provided. Once connected, a connection interface will appear. In the connection mode interface, select one of the available options to transfer files to your computer.



**You may select to transfer files through MTP. For pictures or images, select PTP**



# Troubleshooting

Below is a list of common problems that may occur when using your mobile phone. Try these easy troubleshooting steps to resolve any type of issues you may encounter.

## **The phone does not power on**

- Press and hold the power key until the startup sequence appears on the display.
- Check the battery level and ensure there is sufficient charge.

## **The phone does not respond after several minutes**

- Remove and insert the battery – If the phone has an internal battery, please press and hold the power button.

## **The phone powers off by itself**

- Check if the screen lock of the phone is enabled.
- Check if the phone needs to be charged.

## **The battery won't charge**

- Check if the battery is already fully charged.
- Make sure that the battery is inserted correctly.
- Ensure that the battery being used is a BLU approved battery.
- Double check if the charger connector is properly connected to the phone.

**Note:** Connect charger only after the battery has been inserted.

### **The standby time is too short**

- Please keep in mind that standby time relates directly to phone usage (Internet, Text, Voice Calls, Maps, etc.).
- Batteries typically have to be replaced after a year of use.

### **The phone cannot connect to the network (Voice or Data)**

- Verify if you have active service with your service provider.
- Contact your local network service provider and verify if you are within its network coverage area.

### **The phone displays a SIM Error**

- Make sure the SIM is properly inserted and in its intended slot.
- Make sure that the SIM card is not damaged or scratched.

### **The PIN code was entered incorrectly three times**

- The SIM card will lock and you will need to enter the PUK code (PIN Unlock Code). Please contact your local service provider to obtain the PUK.

### **I cannot make calls**

- Make sure that the number you dialed is correct and the dial key has been pressed.
- Use the full national area code when dialing out of your area or when abroad, use country-specific international access codes.

### **I cannot receive calls**

- Make sure that your phone is connected to a network.
- Check the phones Call Divert and Call barring settings (Check with your service provider for these

settings and codes)

#### **The caller ID does not display on incoming calls**

- Contact your local network service provider and verify you have the caller ID feature enabled on your account or verify if the caller may have blocked his number from appearing.

#### **The caller cannot leave a voicemail message**

- Contact your local network service provider and verify if the voicemail service is active on your account or check if the network is busy.

#### **The phone does not connect to the internet**

- Ensure with your service provider that your account has the appropriate internet/data plan enabled.
- Ensure internet APN settings are configured (Carrier dependent).

#### **Text Messages cannot be Sent / Received**

- Ensure text messaging is enabled with your service provider.
- Ensure APN settings are configured (Carrier dependent).

The information provided in this user manual is subject to change without notice and BLU Products reserves the right to modify the manual at any given time. BLU Products has made every effort to ensure that this user manual is accurate and disclaims responsibility and liability for any inaccuracies or omissions.

**Note:** Some software, user interface, and internal elements may vary depending on final version.

This device complies with part 15 of the FCC rules. Operation is subject to the following two conditions: (1) this device may not cause harmful interference, and (2) this device must accept any interference received, including interference that may cause undesired operation.

NOTE: The manufacturer is not responsible for any radio or TV interference caused by unauthorized modifications or changes to this equipment. Such modifications or changes could void the user's authority to operate the equipment.

NOTE: This equipment has been tested and found to comply with the limits for a Class B digital device, pursuant to part 15 of the FCC Rules. These limits are designed to provide reasonable protection against harmful interference in a residential installation. This equipment generates uses and can radiate radio frequency energy and, if not installed and used in accordance with the instructions, may cause harmful interference to radio communications. However, there is no guarantee that interference will not occur in a particular installation. If this equipment does cause harmful interference to radio or television reception, which can be determined by turning the equipment off and on, the user is encouraged to try to correct the interference by one or more of the following measures:

- Reorient or relocate the receiving antenna.
- Increase the separation between the equipment and receiver.
- Connect the equipment into an outlet on a circuit different from that to which the receiver is connected.
- Consult the dealer or an experienced radio/TV technician for help.

Any changes or modifications not expressly approved by the party responsible for compliance could void the user's authority to operate this equipment.

The SAR limit of USA (FCC) is 1.6 W/kg averaged over one gram of tissue. Device types Smart phone (FCC ID: YHLBLUC6L) has also been tested against this SAR limit.

The highest SAR value reported under this standard during product certification for use when properly worn on the body is 0.778 W/kg and for head is 0.428 W/kg and for hotspot is 1.068 W/kg . Simultaneous RF exposure is 1.068W/Kg.

. This device was tested for typical body - worn operations with the back of the handset kept 10mm from the body.

To maintain compliance with FCC RF exposure requirements, use accessories that maintain a 10mm separation distance between the user's body and the back of the handset. The use of belt clips, holsters and similar accessories should not contain metallic components in its assembly. The use of accessories that do not satisfy these requirements may not comply with FCC RF exposure requirements, and should be avoided.