

Elite 4.7 HD User Manual

Table of Contents

1. Phone Safety Information	1
2. About the Phone	3
3. Before Using.....	5
4. Getting Started	8
4.1 Power On/Off.....	8
4.2 Home Screen.....	9
4.3 Touch Screen.....	9
4.4 Customizing Different Screens	10
4.5 Keyboard Text Input	11
5. Communication	12
5.1 Placing a Call.....	12
5.2 Messaging	13
6. Multimedia	13

6.1 Camera	13
6.1.1 Framing.....	13
6.2 Video	15
6.2.1 Video Recorder.....	15
6.2.2 Video Player	15
6.3 Music Player	16
6.4 Gallery.....	17
7. Network Connection.....	18
7.1 Wi-Fi.....	18
7.2 Bluetooth.....	19
7.2.1 Sending Files	19
7.2.2 Receiving Files	19
7.2.3 SD Card Storage and Transfer	20
7.2.4 USB Cable Connection	20
7.2.5 Airplane Mode.....	21

1. Phone Safety Information

Failure to comply with the following precautions may be dangerous or illegal. Please carefully read the terms below:

Use Safely

Do not use your mobile phone where it is forbidden or where it might cause a disturbance or danger.

Transportation Safety

Please observe all transportation laws and regulations.

Please drive with both hands – DO NOT TEXT AND DRIVE.

Hospitals

Please follow limitations.

Please turn off your mobile phone when near medical instruments.

Airports

Please follow all flight safety regulations and do not use your phone during flight.

Toxic Chemicals

Do not use your mobile phone around fuels or chemicals.

Explosion Area

Please observe related limitations and do not use your mobile phone around an area where explosions may occur.

Accessories and Batteries

Please use only Blu authorized accessories and batteries.

Waterproof

Your mobile phone is not waterproof. Please keep it away from water.

Backup

Please remember to make a backup or keep a written record of all important information saved in your mobile phone.

Connect to other devices

Please read the user manual of the device to get more detailed security instructions before connecting to other devices and do not connect to unmatched product.

SOS Emergency Calls

Make sure your mobile phone is switched on and in a service area. In home screen, tap the phone key and dial 911 and send.

2. About the Phone

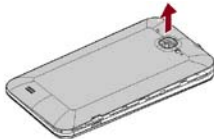


Key	Function
Home	Press the Home key to return to the Home screen. Press and hold the Home key to bring up recent applications
Menu	Press the Menu key to open a list of actions and settings you may access from the current screen
Back	From within a menu, press the back key to return to the previous screen or to dismiss a dialog box. When the onscreen keyboard is open, press the back key to close the onscreen keyboard
Search	From the Home screen, press the key to search for items on the phone or the web
Volume	Press keys to adjust the volume

3. Before Using

Insert the SIM card:

1. Turn the phone off and remove the rear cover and battery.



(1)



(2)

2. Insert the SIM card correctly in the SIM card slot



(3)

3. Insert the battery and rear cover of the mobile phone



(4)



(5)

Note: The SIM Card is a small object. Please keep it out of the reach of children to avoid any accidents. Do not touch the metal surface of the SIM card and keep it away from electromagnets to avoid damage and loss of the data. You will not be able to connect to the network provider if the SIM card is damaged.

Insert the SD Memory Card:

1. Power off the phone and remove the rear cover and battery.
2. Insert the memory card into the slot at the bottom.



3. Insert the battery and the rear cover and power on the phone.

Note: Please use the battery and accessories that came with the phone.

Charging the Phone

1. Connect the charger to an electrical socket.
2. Connect the charger to the charging port of the phone. When the charge starts, an animated icon will indicate that the phone is charging.
3. When the charge is complete, the animated battery icon stops.
4. Disconnect the charger from the power socket and the phone.

Note: Slight heating during charging is normal.

4. Getting Started

4.1 Power On/Off

- To power on:

Long press **Power Key** to turn your phone on. If you have a security lock set up, please enter the code or pattern to unlock the phone.

- To power off:

Long press the **Power Key** and a menu will appear. Select "Power off" to power off the phone.

- To unlock:

After an extended standby, the phone hibernates and the screen darkens to conserve battery. To unlock, press the **Power key** and drag the lock icon rightward.



4.2 Home Screen

The Home screen is your starting point to access all the features on your phone. It displays application icons, widgets, shortcuts, and may be customized with different wallpaper. At the top of the screen, the status bar displays the time, the status of your phone and notification icons.

4.3 Touch Screen

The main way to control Android features is by using your finger to touch icons, menu items, applications, and other items on the touch screen.

- **Press:** To select items such as applications, settings icons, or to type letters and symbols, simply press them with your finger.
- **Long Press:** Press & Hold an item on the screen by pressing it and keeping it pressed until it vibrates. You may customize the Home screen pressing an empty area on the screen and keep it pressed until a menu opens.
- **Drag:** Touch & Hold an item until it vibrates and move your finger on the screen until you reach the desired position. You may also drag items on the home screen to reposition them.
- **Swipe or Slide:** To swipe or Slide, quickly move your finger across the surface of the screen without holding (so the item isn't dragged instead).

- **Double Tap:** Tap quickly twice on a webpage or map to zoom in or out. For example, you may double-tap a browser to zoom in. Once zoomed, that section will fit the width of the screen.
- **Pinch:** In some applications such as Maps, Browser, and items from the gallery, you may zoom in and out by placing two fingers on the screen at once and pinching them together (to zoom out) or spreading them apart (to zoom in).
- **Screen Rotation:** Place the phone upright and rotate counter-clockwise to rotate the screen. This feature may be turned on and off.

4.4 Customizing Different Screens

Adding Items:

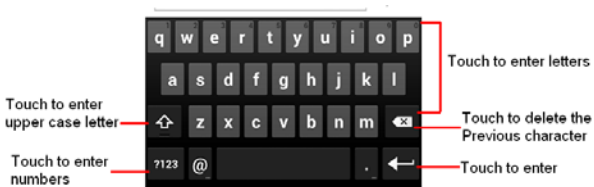
1. Press and hold the item you want to add until it vibrates.
2. Drag the item to a new location on the screen or pause item at the edge of the screen to drag the item onto a different screen pane.
3. Select your desired location and lift your finger to add icon or widget.

Removing Items:

1. Press and hold the item you want to remove until it vibrates.
2. At the top of the screen a trash bin icon will appear.
3. Drag the item to the trash bin icon.
4. When the icon turns red lift your finger to delete the item.

4.5 Keyboard Text Input

You may touch a text field to enter text or to open the Android keyboard. To adjust onscreen keyboard settings, you may go to **Settings > Language & input > Android keyboard**



5. Communication

5.1 Placing a Call

- Press the **Phone** icon on the Home screen or the **Phone** tab from the Call Log menu.
- Enter the phone number.
- Press the phone icon to place the call.



5.2 Messaging

You may use this function to exchange text messages and multimedia messages with your family and friends. The messages to and from the same contact or phone number will be saved into a single conversation so you may see the entire message history conveniently.

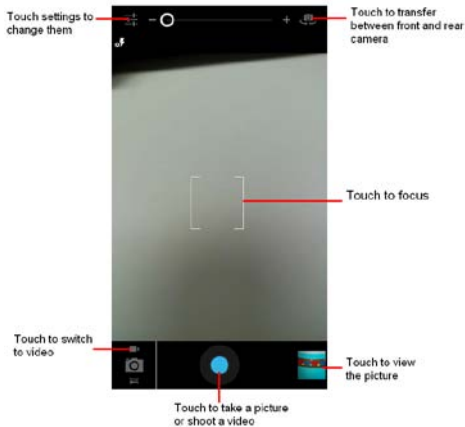
6. Multimedia

6.1 Camera


The camera is a combination of a camera and a camcorder that you may use to shoot pictures and record videos.

6.1.1 Framing

- You may adjust your exposure, flash, and other settings or leave them on automatic setting.
- Frame the person, subject, or item on screen.
- Touch the shutter icon on screen to take a picture. The picture will be saved automatically on the SD Card.



6.2 Video

To record a video press home key and touch application tab. Once in the application menu, search for the **Camcorder** icon and select it. You may also press the  icon and toggle to video mode from the **Camera** menu.

6.2.1 Video Recorder

- Adjust the video quality and other settings or leave it on automatic.
- Frame the person, subject, or item on screen.
- Press the video icon to start recording.
- Press the stop video icon to stop shooting. An image from your most recent video is displayed as a thumbnail at the bottom right.

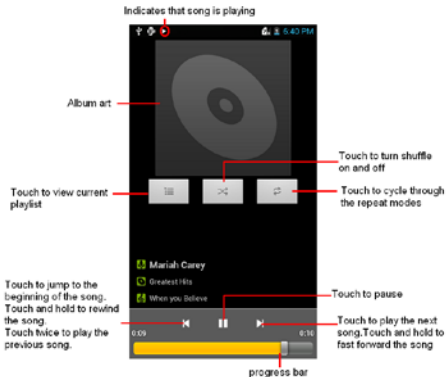
6.2.2 Video Player

Press the Home key, touch application tab and select the **Video** icon to play videos.



6.3 Music Player

Use the Music player to listen to music and other downloaded or recorded audio.



6.4 Gallery

The Gallery will display pictures and videos including those taken with camera and

those that have been downloaded from the web or via USB. You may share your picture through MMS, Bluetooth, and other programs. Press the Gallery icon in the launcher to view albums of your pictures and videos.

7. Network Connection

Your phone can connect to a variety of different networks and devices which include mobile networks for voice and data transmission, Wi-Fi data networks, and Bluetooth devices such as headsets. You may also connect your phone to a computer and transfer files from your computer to your phone's SD card and share your phone's mobile data connection via USB or as a portable Wi-Fi hot spot.

7.1 Wi-Fi

Wi-Fi is a wireless networking technology that can provide internet access at a distance of up to 100 meters depending on the Wi-Fi router and surroundings. You may configure the Wi-Fi as follows:

- Home-> Menu -> System Settings -> Wi-Fi and select to power on Wi-Fi.
- The phone will scan for available Wi-Fi networks and display the results. Any secured networks found will be indicated with a lock icon.

- Press a network to connect to it. If the network is open, you will be prompted to confirm that you want to connect to that network. If the network is secured, you will be prompted to enter a password or credentials.

7.2 Bluetooth

Bluetooth is a short-range wireless communications technology that devices can use to exchange information or connect to.

7.2.1 Sending Files

- Home -> Menu->System Settings-> Bluetooth and select to power on Bluetooth.
- Enter file manager to select the file and long press it. Select: Send -> Bluetooth.
- Press Scan for Devices and the phone will scan and display all of the available Bluetooth devices in range.
- Select the device in the list to pair them.

7.2.2 Receiving Files

- Home-> Menu-> System Settings-> Bluetooth, check Bluetooth to turn it on. Ensure the Bluetooth discoverable is on.
- After paired, the phone will receive the file. The file received will automatically

save to the Bluetooth file folder on the SD card.

7.2.3 SD Card Storage and Transfer

You may connect your phone to a computer via USB cable to transfer music, pictures, and other files between your phone's SD card and the computer.

When connecting your phone to computer and mounting its SD card, you must follow your computer's instructions for connecting and disconnecting USB devices to avoid damaging or corrupting files on your SD card.

7.2.4 USB Cable Connection

1. Use the USB cable that came with your phone and to connect the phone to a USB port on your computer. You receive a notification that the USB is connected.
2. Open the notification panel and select USB.
3. Press turn on USB storage in the screen that opens to confirm that you want to transfer files. When the phone is connected as USB storage, the screen indicates that USB storage is in use and you receive a notification. You can now copy files to and from the SD card.

During this time you can't access the SD card from your phone, so you can't use applications that rely on the SD card such as Camera, Gallery and Music.

7.2.5 Airplane Mode

Some locations may require you to turn off your phone's mobile, Wi-Fi, and Bluetooth wireless connections. All of these wireless connections may be turned off at once by placing your phone in Airplane mode.

1. Press & hold the power button.
2. Select Airplane mode.

FCC Regulations:

● This mobile phone complies with part 15 of the FCC Rules. Operation is subject to the following two conditions: (1) This device may not cause harmful interference, and (2) this device must accept any interference received, including interference that may cause undesired operation.

● This mobile phone has been tested and found to comply with the limits for a Class B digital device, pursuant to Part 15 of the FCC Rules. These limits are designed to provide reasonable protection against harmful interference in a residential installation. This equipment generates, uses and can radiated radio frequency energy and, if not installed and used in accordance with the instructions, may cause harmful interference to radio communications. However, there is no guarantee that interference will not occur in a particular installation. If this equipment does cause harmful interference to radio or television reception, which can be determined by turning the equipment off and on, the user is encouraged to try to correct the interference by one or more of the following measures:

- Reorient or relocate the receiving antenna.
- Increase the separation between the equipment and receiver.
- Connect the equipment into an outlet on a circuit different from that to which the receiver is connected.
- Consult the dealer or an experienced radio/TV technician for help.

Changes or modifications not expressly approved by the party responsible for compliance could void the user's authority to operate the equipment.

▶ **RF Exposure Information (SAR)**

This model phone meets the government's requirements for exposure to radio waves.

This phone is designed and manufactured not to exceed the emission limits for exposure to radio frequency (RF) energy set by the Federal Communications Commission of the U.S. Government.

The exposure standard for wireless mobile phones employs a unit of measurement known as the Specific Absorption Rate, or SAR. The SAR limit set by the FCC is 1.6W/kg. *Tests for SAR are conducted using standard operating positions accepted by the FCC with the phone transmitting at its highest certified power level in all tested frequency bands. Although the SAR is determined at the highest certified power level, the actual SAR level of the phone while operating can be well below the maximum value. This is because the phone is designed to operate at multiple power levels so as to use only the power required to reach the network. In general, the closer you are to a wireless base station antenna, the lower the power output.

The highest SAR value for the model phone as reported to the FCC when tested for use at the ear is 0.789 (Head SAR)W/kg and when worn on the body, as described in this user guide, is 1.108 (Body SAR)W/kg (Body-worn measurements differ among phone models, depending upon available enhancements and FCC requirements.)

While there may be differences between the SAR levels of various phones and at various positions, they all meet the government requirement.

The FCC has granted an Equipment Authorization for this model phone with all reported SAR levels evaluated as in compliance with the FCC RF exposure guidelines. SAR information on this model phone is on file with the FCC and can be found under the Display Grant section of <http://www.fcc.gov/oet/fccid> after searching on FCC ID: YHLBLUELITE47HD.

For body worn operation, this phone has been tested and meets the FCC RF exposure guidelines for use with an accessory that contains no metal and the positions the handset a minimum of 1.0 cm from the body. Use of other enhancements may not ensure compliance with FCC RF exposure guidelines. If you do not use a body-worn accessory and are not holding the phone at the ear, position the handset a minimum of 1.0 cm from your body when the phone is switched on.