

# Life 8

user manual

# Table of Contents

Safety Information.....	3
Appearance and Key Function.....	4
Introduction.....	5
Call Functions.....	6
Notification Bar.....	7
Contacts.....	8
Messaging.....	9
Bluetooth & Wi-Fi.....	10
Downloads.....	12
Internet Browser.....	12
Gmail.....	13
Play Store.....	14
Camera.....	15
Gallery.....	16
Music.....	17
FM Radio.....	17
Sound Recorder.....	18
File Manager.....	19
Calendar.....	20
Alarm Clock.....	20
Settings.....	21
Storage.....	24

# Safety Information

Please carefully read the terms below:

## Use Safely

Do not use the phone in situations where it might cause danger.

## Transportation Safety

Please observe all transportation laws and regulations.

Please drive with both hands on the wheel.

**DO NOT TEXT AND DRIVE**

## Hospital Safety

Please follow hospital rules and limitations.

Please turn off your mobile phone when near medical instruments.

## Airport Safety

Remember to follow all airport and flight safety regulations.

Please do not use your phone during flight.

## Chemical Warning

Do not use your mobile phone around fuels or chemicals.

## Temperature Warning

Do not subject your phone to extreme temperature conditions.

## Water Hazard

Your phone is not waterproof. Keep it away from water and liquids.

## Emergency Calls

Make sure your mobile phone is switched on and in a service area.

In home screen, tap the phone key and dial the emergency number.

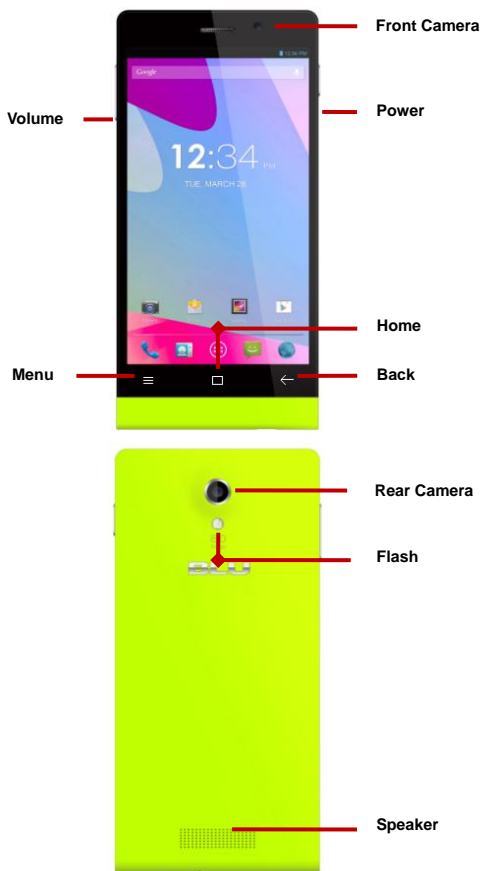
## Accessories and Batteries

Use only Blu authorized batteries and accessories.

## Information Backup

Remember to keep a written record of all important information.

# Appearance and Key Function



# Introduction

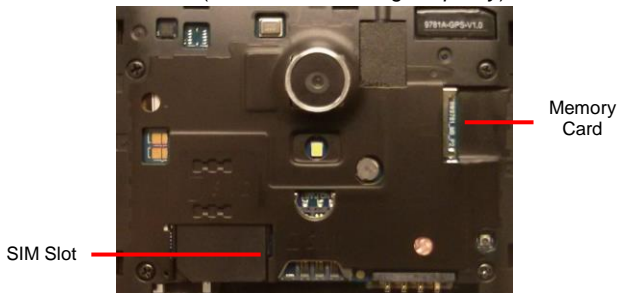
## Installation of the SIM Card

---

**Note:** Please keep the SIM card out of the reach of children. The SIM card and its contact are easily damaged due to scratching or bending. Please use caution when carrying, installing or taking out the SIM card. **SIM:** Contact your cellular phone service provider directly to obtain the SIM card.

### **To insert SIM card:**

1. Remove the rear cover. Insert the SIM card.
2. Insert the SD card. (For additional storage capacity)



3. Insert the battery, replace the rear cover, and power on phone.

## Power On and Off

---

**On** - Please ensure the SIM card has been properly inserted into the phone. Long press the Power key to switch on the phone on.

**Off** - In standby mode, long press on Power key until an options menu appears. Select Power Off in the menu and confirm in the pop-up prompt to switch off the phone.

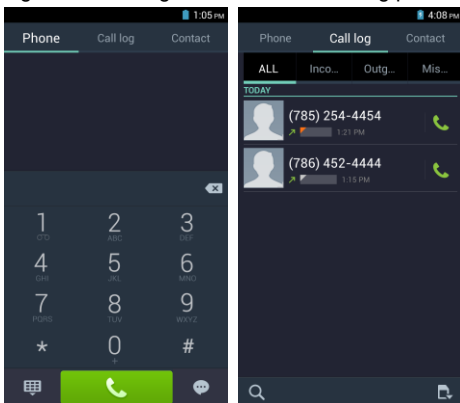
## Security

---

You may set a security lock feature as a security measure for the phone. For further information regarding password locks, password revision and other functions please enter into the security option in system settings.

# Call Functions

At the dial keyboard, enter the phone number and then click the dial key. If dialing an extension, you may click the dial pad icon in the bottom of the screen to open the interface and enter the number of the extension. You may also press and hold the 0 key to add a (+) sign when adding an international dialing prefix.



---

## Call Logs

Every telephone number called and received will be saved in the phones call log. All numbers in the call log can be dialed directly by clicking the dial icon on the screen. When the number appears on the list, click it to view details. To clear the call logs, press the menu key and select delete. From the clear logs menu, select the calls that you wish to remove. You may remove one or multiple calls.

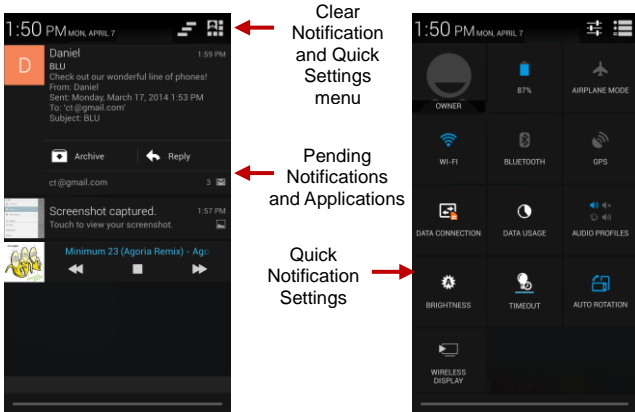
---

## Call Options

There are different options that can be used in the call log and dialing interface. You may press the menu key while in the dial interface and adjust speed dial and call settings. In the call logs, you may press the search button to browse through contacts list or set default contact resources.

# Notification Bar

The notification bar is the status bar located on the top of the screen which contains useful and important information regarding your phone and the applications that are installed. On the notification bar, several icons will appear such as signal bar, battery indicator, data indicator, Bluetooth and Wi-Fi. You may slide the notification bar down with your finger to display any pending notifications or actions.



## Notification Settings

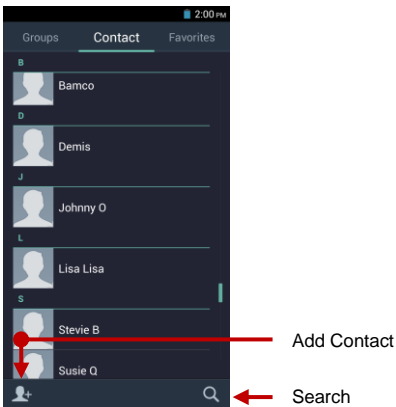
The notification settings window provides shortcuts to different phone settings for quick access. Click on any of the shortcut notification icons to power on or off.

**Note:** To remove pending notifications, drag down the notification bar and click the clear notification icon on the upper right hand part of the screen (3 horizontal lines). The notification settings menu is located by dragging down the notification bar and is located on the upper right hand part of the screen next to the clear notification icon.

# Contacts

**Enter:** Click on the applications menu and select contacts.

- The default display is the phone contacts and SIM card contacts.
- The contacts are organized alphabetically by default.



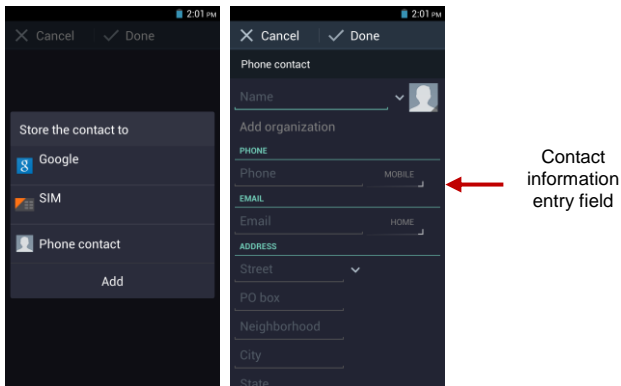
Click the Search icon to enter the contact search interface.

- Any numbers or letters associated with any of the contacts saved in the list will be shown in the search results.

## **Add New Contact**

1. Click the add contact icon (+) to add contact.
2. Select to save your contacts to the Google account, the phone or the SIM card.
3. You may enter different contact details which include adding a picture, name, telephone number, group, address, and email among other options.
4. Click to finish and save contact.





## Delete Contact

---

1. Click on the Contacts icon to enter the phonebook.
2. Click the menu key to access the Contacts menu.
3. Click on Delete Contact and scroll to select which contact you wish to delete.

**Note:** You may also search for an individual contact in the phonebook. Once the contact is found click the contact name to enter the contact profile, press the menu key to bring up the contact menu and select delete to eliminate from the phonebook.

# Messaging

You may use this function to exchange text messages and multimedia messages with your family and friends. The messages to and from the same contact or phone number will be saved into a single conversation so you may see the entire message history conveniently.

## Send an SMS

---

Application Menu » Messaging » New message (or shortcut icon)

1. Click the contact icon to enter text message recipient
2. Compose Text Message and click Send

### **Send an MMS**

---

When creating message, the default message style is SMS. The message will automatically convert to MMS when adding an attachment or when surpassing 10 pages of SMS messages.

1. Click the attachment icon in the messaging interface.
2. Click to add attachments and create an MMS message.



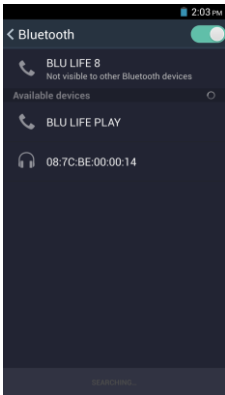
## **Bluetooth & Wi-Fi**

Bluetooth is a short-range wireless communications technology that devices can use to exchange information and connect to different types of devices which include headsets and other devices.

### **Power on Bluetooth**

---

- 1) Settings » Bluetooth and select to power on Bluetooth.
- 2) The Bluetooth icon will appear in the notification bar. The Bluetooth will then start to scan for all devices within its range and will display all available devices in a list.
- 3) In Bluetooth settings, all the devices found will displayed in a list.



List of available  
Bluetooth devices

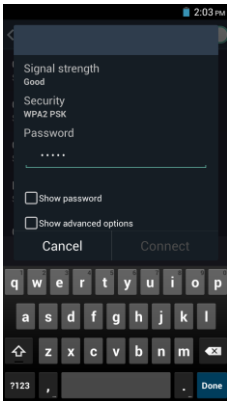
**Note:** The maximum  
detecting time of the  
phone is 2 minutes.

## Power on Wi-Fi

---

- 1) Settings » Wi-Fi and select ON to power on Wi-Fi
- 2) Click on the desired Wi-Fi network to be connected.

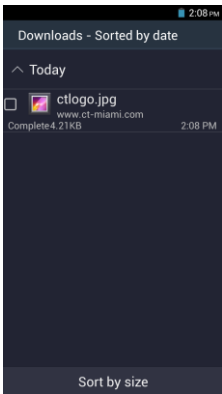
**Note:** Unsecured networks can be connected to directly - secured networks require a password or credentials prior to connection.



List of available networks and  
the network connection screen

# Downloads

The download section of the phone keeps sorted all of the files that have been downloaded on the phone. The section can display the download by date or by size. To clear the file from the list, click on the box to the left of the file and then select the delete icon.



← List of available  
downloads sorted by  
date

# Internet Browser

## Menu Functions

---

### Backward

- This option will return the user to the previous page.

### Forward

- This option will move to a web page after the current page.

### Windows

- View all windows open by clicking the windows icon in the browser.

### Bookmarks

- Click the save to Bookmarks option to save the current URL to Bookmarks.

## More

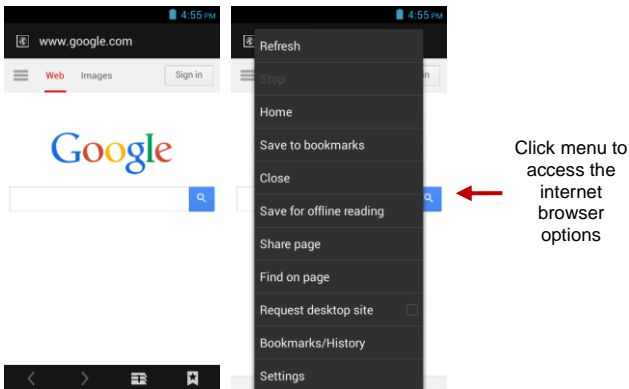
Find on page: Search current page.

Share page: Select to share the current page.

Save for offline reading: Saves page for offline reading.

Bookmarks/History: Show your browsing history and view the most visited pages.

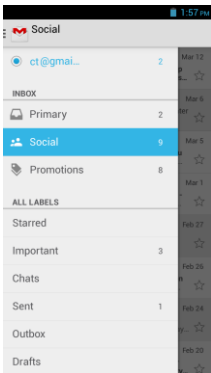
Settings: Contains a variety of browser settings.



## Gmail

Gmail is Google's free email service. To access the Gmail program, click the applications menu and click on the Gmail icon and either sign in with your existing account or create a new one.

**Note:** In order to keep accounts streamlined with Google services, your Gmail account user name and password will be used for some Google programs which include: Google Play Store, Google Drive, Google +, Google Photos, and Google Wallet.



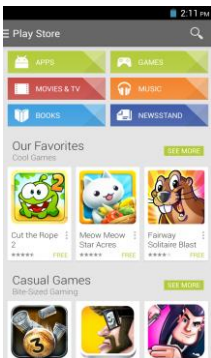
The Gmail inbox is separated by default in three different categories.

These categories include primary inbox, social inbox where all your Facebook, Twitter, and social media emails are separated to and your Promotions inbox where all your commercial emails are separated.

You may add or delete other categories in Gmail settings

## Play Store

Google Play allows you to download music, movies, and games directly to your device. To access the Google Play Store, click on the applications menu and then the Play Store icon.



Search and select between different Play Store categories

# Camera

## Camera

---

**Prior to use:** Insert SD card before using the camera or video camera. All photos or videos taken by the phone are typically stored in the memory card for large storage capacity of images and videos.

### Open Camera

1. Applications Menu » Camera
2. Switch to video mode if you want to record videos.

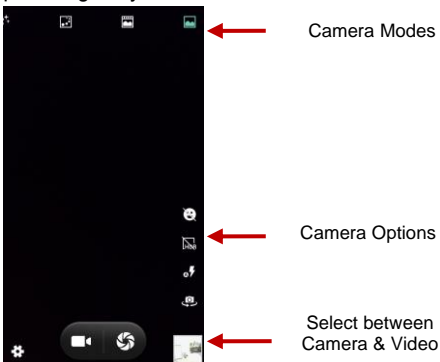
**Note:** You may place a camera shortcut icon on any of the screens

### Take Pictures

1. Aim the object that the picture will be taken.
2. Press the “Shutter” button on the screen.
3. After taking the picture, the file will be saved in the cameras gallery folder.
4. You can view the photos by clicking the preview box button.

You may adjust various settings for the camera by pressing Menu while in the camera interface.

When in the camera viewfinder mode, you can switch to video or photos’ gallery.

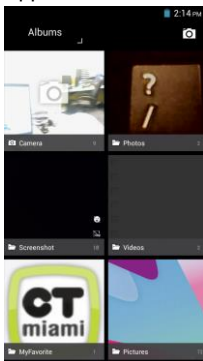


# Gallery

## Open Images

---

Applications Menu » Gallery



Pictures and videos  
are stored in  
separate albums

## Share Pictures

---

You may share pictures by sending them through different types of installed applications. You may also send pictures through the MMS message function by attaching a picture and also via Bluetooth.

## Adjust Image

---

Press Menu and select edit to adjust images: You may select from different effects that may include: Vintage, Black and White, Instant, Latte, Litho, X-Process, Crop, Rotate, Mirror, Straighten, Vignette, Contrast, Exposure, Auto color, Shadows, Vibrancy, among other settings that can be used to adjust picture images.

## Crop Pictures

---

Click menu and crop to adjust the size of the picture. Once the picture appears, pinch your fingers in or out to adjust the size. To keep an images proportion, please hold down any of the four corners of the image and adjust accordingly.

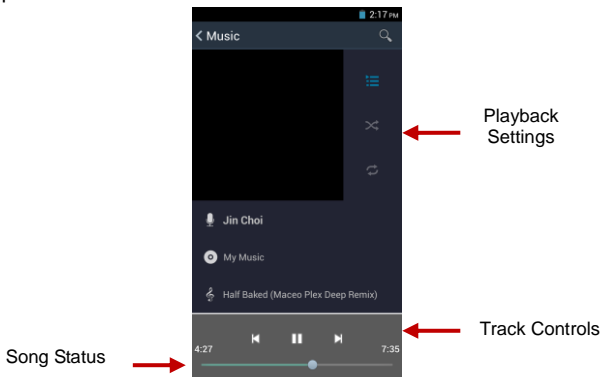


# Music

## Open Music

---

Application Menu » Music



## Search Music

---

You may choose to search for music from media folder through artist name, song name, album name. **The following formats are available:** AMR, MIDI, MP3, WAV, and OGG.

# FM Radio

## FM Radio

---

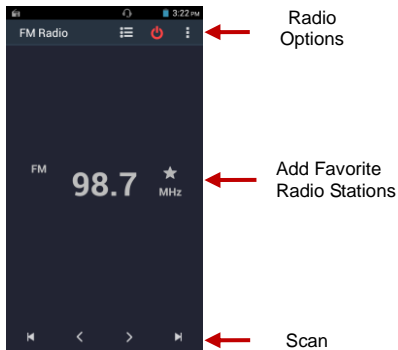
Through this function, you may listen to FM radio on the device. The FM radio uses the wired headphones as an antenna in order to receive signal. Before using this function, connect the original equipment headphones that came with the phone.

## Open FM radio

---

Press the FM Radio icon to open the application.

1. Click "Search" automatic scans of FM channels.
2. Click to add favorite radio stations.



## **FM Radio as Background**

Click on the Home key to move the FM Radio to the background.

# Sound Recorder

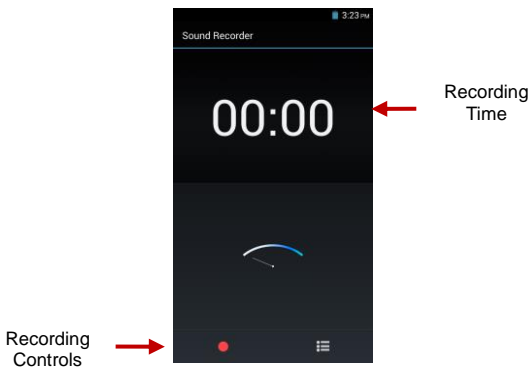
The Sound Recorder can record voice or any audio.

You may send any recorded audio via Bluetooth or MMS and also have the option to make any recorded audio the phones default ring tone.

The recorder uses AMR, 3GPP and OGG format.

## **Record**

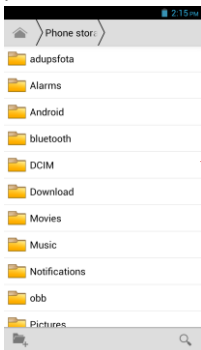
- Keep the phone's microphone near the sound source.
- Click the record button to record the audio.
- Click the stop button to stop recording the audio.



**Note:** All recordings are typically saved in the SD card folder by default. Please ensure the SD card is installed prior to recording.

## File Manager

The file manager allows you to search and organize your stored phone files conveniently and efficiently through one program.

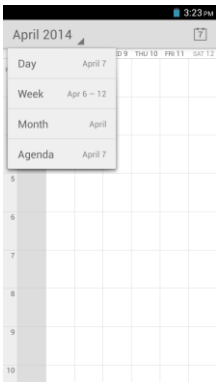


Scroll and search through the File Manager for stored phone files.

You may also search or add new folders from the File Manager interface

# Calendar

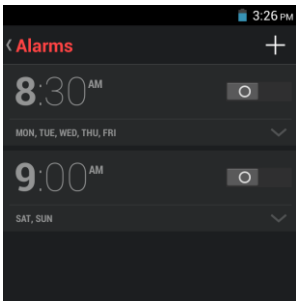
The calendar helps keep track of your life's most important moments in one application



Long press the specific day or hour you wish to enter a new event to

# Alarm Clock

Click on the Clock icon then click the alarm tab and enter the alarm clock set interface where you may add and edit alarms.



Click to add, edit or delete alarms

# Settings



## Call Settings

- Set Voice call and other call settings



## Wi-Fi

- **Settings » Wi-Fi** to power on. When on, the Wi-Fi will automatically search for available networks. Any unsecured network can be used directly and any secured network requires a password or credentials prior to connection.



## Bluetooth

- Press the switch to power on Bluetooth. Once on, Bluetooth will automatically scan for any nearby open devices.



## Data Usage

- Mobile and Wi-Fi Data Usage

## More Wireless & Networks

- Tethering, Portable Hotspot, VPN, APN
- Airplane Mode

**Note:** *When in flight mode, all network connections will turn off automatically.*



## Audio Profiles

This option sets the phone ring tone settings for receiving calls and notifications. Some of the settings include:

- Vibrate, volume, ring tones, ring tones notification, dial touchpad, and haptic feedback and tones



## Display

Brightness, Auto rotating screen, Wallpaper, Screen Timeout



## Storage

- View the phone memory usage.



## Battery

- General power usage



## Apps

- Manage applications - Manage and delete installed applications.
- Running Applications- Press the 'Force Stop' button to stop any of the applications listed and removes from the running apps list.



## Location Access

- Mobile Network Location - Use wireless services to find locations in applications.
- Power on GPS to set satellite positioning for increased accuracy.



## Security

Set up screen locks: Use slide, voice unlock, pattern, PIN or password to lock the screen.

- Pattern: The first time there will be simple unlock instructions and examples. Click "next step" to continue the security pattern step.
- PIN: Enter PIN number to unlock the screen.
- Password: Use password to unlock the screen

*You may stop the security feature at any time.*

### Set up SIM card PIN lock

- SIM card PIN (Personal Identification Number) is used to prevent unauthorized use of SIM card.

To change a blocked PIN code, you will need to unlock the SIM lock then go to the Change Password screen. The phone will automatically prompt you enter the old PIN code and ask to enter a new PIN code twice. The phone will then prompt you that the change was successful. If you enter the PIN incorrectly three times, the SIM and PIN codes will be automatically locked. You will need the PUK code to unlock the phone which is available through your service provider. If you enter the PUK code incorrectly 10 times, the

SIM card will be permanently locked. Please see your service provider for a new SIM card.

- Password visible – Make the password visible when it's typed.
- Use security credentials - Allow applications to visit security credentials or other credentials.

### **Language and Input**

- Language – Change the language of the phone.
- Custom Dictionary - Add or delete words to the custom dictionary.
- Keyboard Settings – Haptic vibration, Haptic tones, Capitalizing, Speech Input, Inputting words, Predictive text function, Auto-Text, Input keyboard method

### **Backup & Reset**

- Backup Data – Will back up all application data, WLAN passwords, and other settings to Google's servers
- Restore to Factory Settings - Clear all data stored on the phone.

### **Date & Time**

- Date and Time adjustment.
- Time Zone - Select Time Zone according to where your location.
- Select Date Format - There are 3 kinds of formats you can choose from: Month-Day-Year, Day-Month-Year and Year-Month-Day, and Year-Month-Day which is the default setting

### **Schedule Power On & Off**

- Schedule power on and off

### **Accessibility**

- Power button ends call and auto rotate screen
- Speak Passwords and large text

## Developer Options

If the phone does not display Developer options press “Build number” seven (7) times in the about phone tab in settings.

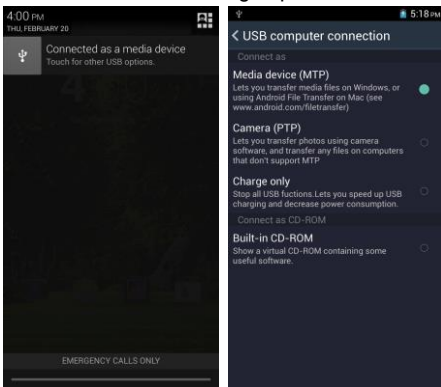
- The developer options gives access to USB Debugging and other developer options

## About Phone

- Phone information status and firmware updates

# Storage

Connect the phone with the USB cable provided. Once connected, a connection interface will appear. In the connection mode interface, select MTP and turn on from the connection screen to be able to transfer files. Other storage options are also available.



Some system settings, hardware, and UI options may vary depending on final phone version.



# FCC Regulations:

This mobile phone complies with part 15 of the FCC Rules.

Operation is subject to the following two conditions: (1) This device may not cause harmful interference, and (2) this device must accept any interference received, including interference that may cause undesired operation.

This mobile phone has been tested and found to comply with the limits for a Class B digital device, pursuant to Part 15 of the FCC Rules. These limits are designed to provide reasonable protection against harmful interference in a residential installation. This equipment generates, uses and can radiated radio frequency energy and, if not installed and used in accordance with the instructions, may cause harmful interference to radio communications. However, there is no guarantee that interference will not occur in a particular installation. If this equipment does cause harmful interference to radio or television reception, which can be determined by turning the equipment off and on, the user is encouraged to try to correct the interference by one or more of the following measures:

- Reorient or relocate the receiving antenna.
- Increase the separation between the equipment and receiver.
- Connect the equipment into an outlet on a circuit different from that to which the receiver is connected.
- Consult the dealer or an experienced radio/TV technician for help.

## **FCC Note:**

Caution: Changes or modifications not expressly approved by the party responsible for compliance could void the user's authority to operate the equipment.

# RF Exposure Information (SAR)

This phone is designed and manufactured not to exceed the emission limits for exposure to radio frequency (RF) energy set by the Federal Communications Commission of the United States.

During SAR testing, this device was set to transmit at its highest certified power level in all tested frequency bands, and placed in positions that simulate RF exposure in usage against the head with no separation, and near the body with the separation of 10 mm. Although the SAR is determined at the highest certified power level, the actual SAR level of the device while operating can be well below the maximum value. This is because the phone is designed to operate at multiple power levels so as to use only the power required to reach the network. In general, the closer you are to a wireless base station antenna, the lower the power output.

The exposure standard for wireless devices employing a unit of measurement is known as the Specific Absorption Rate, or SAR. The SAR limit set by the FCC is 1.6W/kg.

This device is complied with SAR for general population /uncontrolled exposure limits in ANSI/IEEE C95.1-1992 and had been tested in accordance with the measurement methods and procedures specified in IEEE1528. This device has been tested and meets the FCC RF exposure guidelines when tested with the device directly contacted to the body.

The FCC has granted an Equipment Authorization for this model phone with all reported SAR levels evaluated as in compliance with the FCC RF exposure guidelines. SAR information on this model phone is on file with the FCC and can be found under the Display Grant section of [www.fcc.gov/oet/ea/fccid](http://www.fcc.gov/oet/ea/fccid) after searching on FCC ID: YHLBLULIFE8.

For this device, the highest reported SAR value for usage against the head is 0.65 W/kg, for usage near the body is 1.08 W/kg.

While there may be differences between the SAR levels of various phones and at various positions, they all meet the government requirements.

SAR compliance for body-worn operation is based on a separation distance of 10 mm between the unit and the human body. Carry this device at least 10 mm away from your body to ensure RF exposure level compliant or lower to the reported level. To support body-worn operation, choose the belt clips or holsters, which do not contain metallic components, to maintain a separation of 10 mm between this device and your body.

RF exposure compliance with any body-worn accessory, which contains metal, was not tested and certified, and use such body-worn accessory should be avoided.