

# **Star 4.0**

## **User Manual**

# Table of Contents

Safety Information .....	3
Appearance and Key Function.....	4
Introduction .....	5
Call Functions .....	6
Contacts .....	7
Messaging .....	8
Internet Browser .....	9
Bluetooth .....	10
Camera .....	11
Gallery .....	12
Music.....	13
Sound Recorder .....	14
Alarm Clock.....	15
FM Radio.....	15
Settings .....	16
Storage.....	19

# Safety Information

Please carefully read the terms below:

## **Use Safely**

Do not use your mobile phone where it might cause danger.

## **Transportation Safety**

Please observe all transportation laws and regulations.

Please drive with both hands on the wheel.

**DO NOT TEXT AND DRIVE**

## **Hospitals**

Please follow limitations.

Please turn off your mobile phone when near medical instruments.

## **Airports**

Please follow all flight safety regulations and do not use your phone during flight.

## **Toxic Chemicals**

Do not use your mobile phone around fuels or chemicals.

## **Explosion Hazard**

Please observe related limitations and do not use your mobile phone around an area where explosions may occur.

## **Accessories and Batteries**

Please use only Blu authorized batteries and accessories.

## **Backup**

Please remember to keep a written record of all important information.

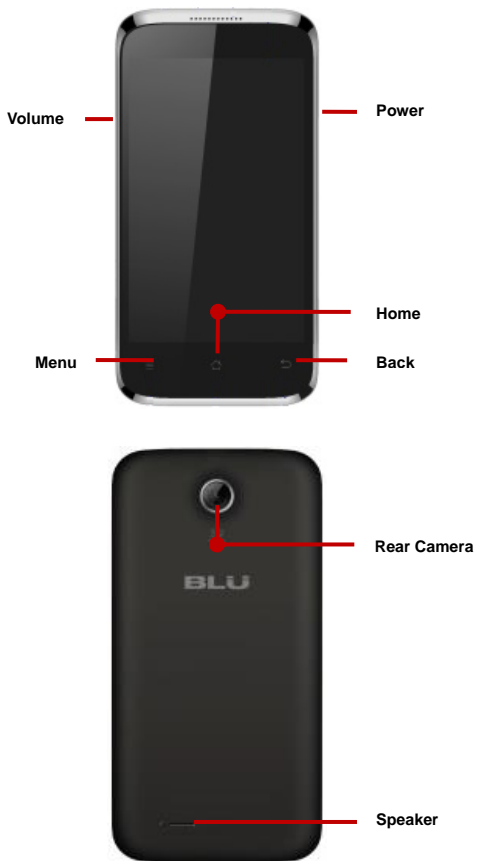
## **Water**

Your phone is not waterproof. Keep it away from water and liquids.

## **SOS Emergency Calls**

Make sure your mobile phone is switched on and in a service area. In home screen, tap the phone key and dial 911 and send.

# Appearance and Key Function



# Introduction

## Installation of the SIM Card

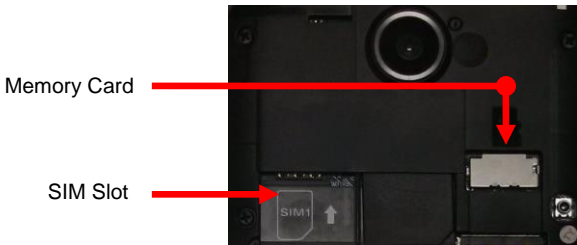
---

Please install the SIM card before using your phone.

**Note:** Please keep the SIM card out of the reach of children. The SIM card and its contact are easily damaged due to scratching or bending. Please be cautious when carrying, installing or taking out the SIM card. *Please contact your cellular phone service provider directly to obtain the SIM card.*

### **To insert SIM card:**

1. Switch off the mobile phone and remove the rear cover and battery. Insert the SIM card.
2. Insert the SD card. (*For additional storage capacity*)



3. Insert the battery and replace the rear cover of the mobile phone.

## Power On and Off

---

**On** - Please ensure the SIM card has been properly inserted into the phone. Long press the Power key to switch on the phone on.

**Off** - In standby mode, long press on Power key until an options menu appears. Select Power Off in the menu and confirm in the pop-up prompt to switch off the phone.

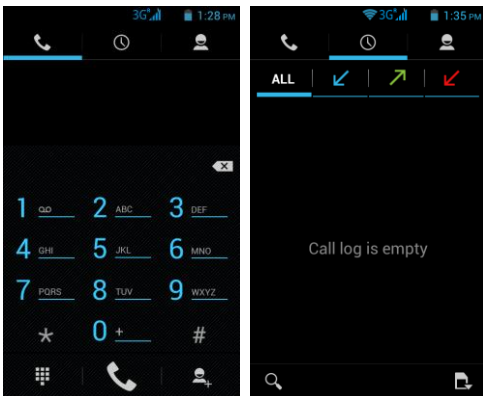
## Security

---

You may set a security lock feature as a security measure for the phone. For further information regarding password locks, password revision and other functions please enter into the security option in system settings.

# Call Functions

At the dial keyboard, enter the phone number and then click the dial key. If dialing an extension, you may click the dial pad icon in the bottom of the screen to open the interface and enter the number of the extension. You may also enter an input number and call contacts through speed dial.



## **Call Logs**

Every telephone number called and received will be saved in the phones call log. All numbers in the call log can be dialed directly by clicking the dial icon on the right side of the screen. When the number appears on the list, click it to view details.

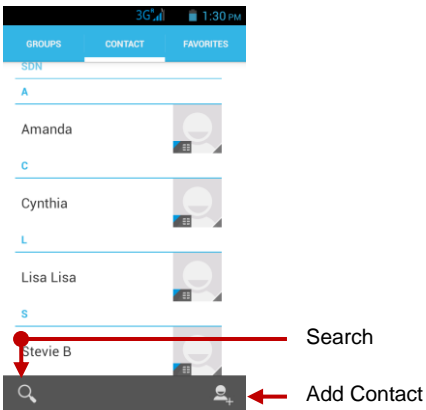
## **Proximity Sensor**

The proximity sensor determines how far away an object is from the device. During the call or when your place the phone close to the ear, the backlight will turn off automatically this conserves battery and prevents inadvertently touching.

# Contacts

**Enter:** Click on the applications menu and select contacts

- The default display is the phone contacts and SIM card contacts
- The contacts are organized alphabetically by default.



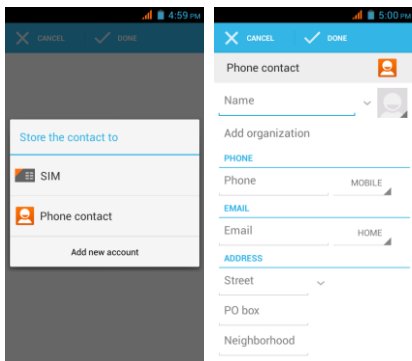
Click the Search icon to enter the contact search interface.

- Any numbers or letters associated with any of the contacts saved in the list will be shown in the search results.
- If there were no matches for the inputted contact, the interface will display no contacts found.

## **Add New Contact**

---

1. Click (+) icon to add contact.
2. Select to save contacts to phone or SIM card.
3. You may edit contact picture, name, telephone number, group, address, and email among other options.
4. Click to finish and save contact.



# Messaging

You may use this function to exchange text messages and multimedia messages with your family and friends. The messages to and from the same contact or phone number will be saved into a single conversation so you may see the entire message history conveniently.

## **Send an SMS**

---

Application Menu » Messaging » New message  
(or use shortcut icon)

1. Click to enter recipient (You may enter contacts from contact book or enter a new number)
2. Compose Message
3. Send

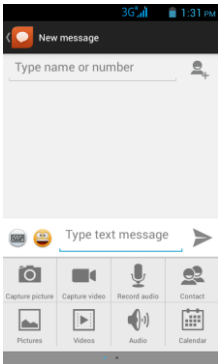
## **Send an MMS**

---

When creating message, the default message style is SMS. The message will automatically convert to MMS when adding an attachment.

1. Click the Paperclip icon in the messaging interface.
2. Click "Attach" to add the following attachments.





Attachment  
Type for MMS  
Message

# Internet Browser

## Menu Functions

---

### Backward

- After browsing through multiple pages, this option will return the user to the previous page.

### Forward

- After browsing through multiple pages, this option will move to a web page after the current page.

### Windows

- You may view all windows open by clicking the windows icon in the upper right part of the browser.

### Bookmarks

- Click the save to Bookmarks option to make the current URL as a saved Bookmark.
- Click Bookmarks/History to opened saved bookmarks.

### More

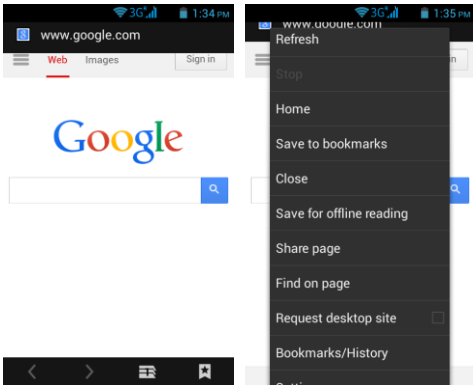
Find on page: Search current page.

Share page: Select to share the current page.

Save for offline reading: Saves page for offline reading.

Bookmarks/History: Show your browsing history and view the most visited pages.

Settings: Contains a variety of browser settings.



## Bluetooth

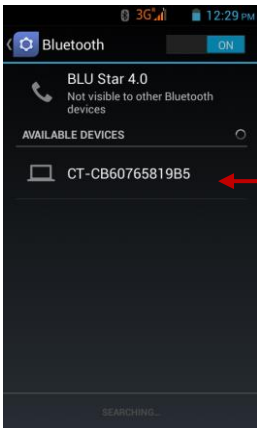
Bluetooth is a short-range wireless communications technology that devices can use to exchange information and connect to different types of devices which include headsets, car kits, and other devices.

### **Power on Bluetooth**

---

- 1) Settings » Bluetooth and select to power on Bluetooth.
- 2) The Bluetooth icon will appear grey in the in the notification bar. Click “scan for devices” and the phone will start to scan for all devices within range.
- 3) In Bluetooth settings all the devices found will displayed in the list under the icon.

**Note:** *The maximum detecting time of the phone is 2 minutes.*



List of available devices

# Camera

## Camera

---

**Prior to use:** Install memory card before using the camera or video camera. All photos or videos taken by the phone are typically stored in the memory card for large storage capacity for images.

### Open Camera

1. Applications Menu » Camera
2. Switch to video mode if you want to record videos.

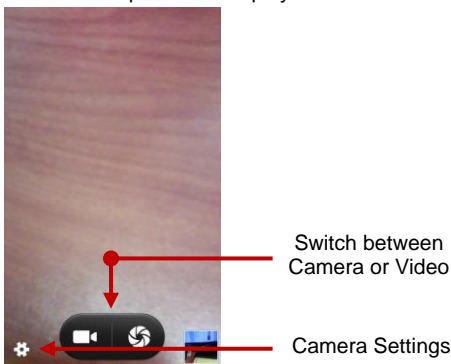
**Note:** You may place a camera shortcut icon on any of the screens

### Take Pictures

1. Aim the object that the picture will be taken.
2. Press the “Shutter” button on the screen.
3. After taking the picture, the file will be saved in the camera’s gallery folder.
4. You can view the photos by clicking the preview box button.

You may adjust various settings for the camera by pressing Menu while in the camera interface.

When in the camera viewfinder mode, you can switch to video or photos' gallery. On the camera viewfinder mode, you will find the display the preview of the previous picture taken. Click the "preview box" and the photo will display in full screen.



# Gallery

## Open Images

---

Applications Menu » Gallery

## **Share Pictures**

You may share pictures by sending them through Gmail or the E-mail application. You may also send pictures through the MMS message function by composing a message and attaching the picture. Any image can also be sent via the Bluetooth function by selecting Bluetooth equipment that has been paired.

## Adjust Image

---

Press Menu and Edit to adjust images

You may select from different effects that include: Vintage, Black and White, Instant, Latte, Litho, X-Process, Crop, Rotate, Mirror, Straighten, Vignette, Contrast, Exposure, Auto color, Shadows, Vibrancy, among other settings that can be used to adjust picture images.

## **View Images**

In the picture interface, click on an album to view images

In the photo album, scroll the picture towards left to view the next picture or towards right to view the previous one.

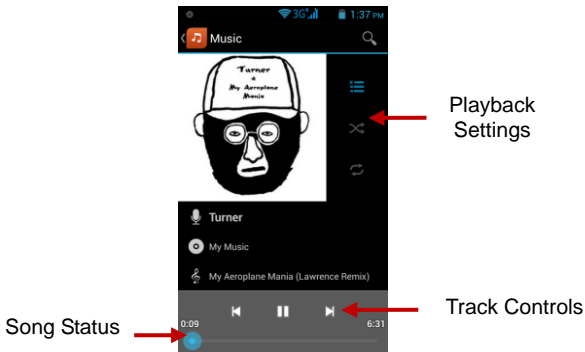
## **Crop Pictures**

1. If you want to adjust the size of the picture, use the crop tools. Once the arrow appears, pinch your fingers in or out to adjust the size.
2. If you want to adjust the image and keep its proportion, please hold down any of the four corners of the image and adjust accordingly.

# Music

## **Open Music**

Application Menu » Music



## Search Music

---

You may choose to search for music from media folder through artist name, song name, album name. **The following formats are available:** AMR, MIDI, MP3, WAV, and OGG.

# Sound Recorder

The Sound Recorder can record voice or any audio.

You may send any recorded audio via Bluetooth or MMS and also have the option to make any recorded audio the phones default ring tone.

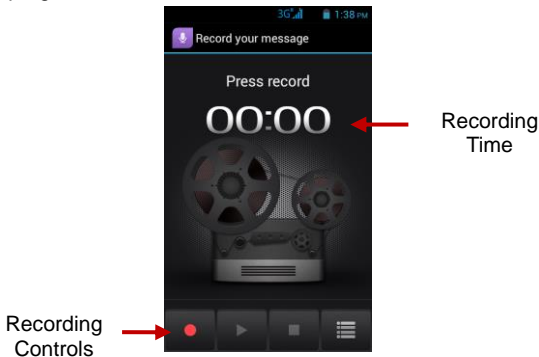
**Notice:** *The recorder uses AMR, 3GPP and OGG format.*

## Record

---

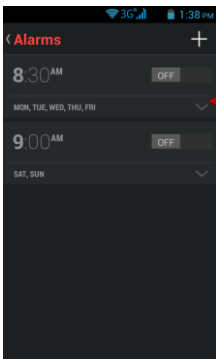
- Keep the phone's microphone near the voice source.
- Click the record button to record the audio.
- Click the stop button to stop recording the audio.

All recordings will be saved in my recording folder in the default music program.



# Alarm Clock

1. Click on the Clock icon in the application menu
2. Click set alarm button and enter the alarm clock set interface where you may add and edit alarms



Click to add, edit or delete alarms

# FM Radio

## **FM Radio**

---

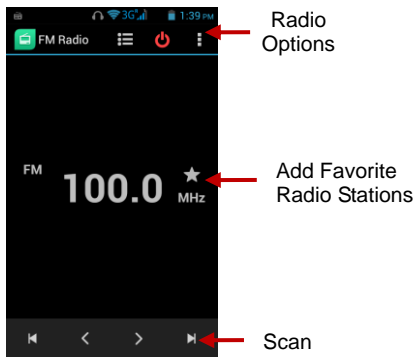
Through this function, you may listen to FM radio on the device. The FM radio uses the wired headphones as an antenna in order to receive signal. Before using this function, connect the original equipment headphones that came with the phone.

## **Open FM radio**

---

Press the FM Radio icon to open the application.

1. Click “Search” automatic scans of FM channels.
2. Click to add favorite radio stations.



## FM Radio as Background

Click on the Home key to move the FM Radio program to the background.

# Settings

## Wi-Fi

- **Settings » Wi-Fi** to power on. When on, the Wi-Fi will automatically search for available networks. Any unsecured network can be used directly and any secured network requires a password or credentials prior to connection.

## Bluetooth

- Press the switch to power on Bluetooth. Once on, the Bluetooth will automatically scan for any nearby open equipment.

## Data Usage

- Mobile and Wi-Fi Data Usage



## More Wireless

- VPN
- Tethering & Portable hotspot
- Airplane Mode

**Note:** *When in flight mode, all network connections will turn off automatically.*

## Audio Profiles

This option sets the phone tone settings for receiving calls and notifications. Some of the settings include:

- Vibrate, volume, ring tones, ring tones notification, dial touchpad, and haptic feedback and tones

## Display

Brightness, Auto rotating screen, Wallpaper, Screen Timeout

## Storage

- View the phone memory usage.

## Battery

- General power usage

## Apps

- Manage applications - Manage and delete installed applications.
- Running services - Press the 'Stop' button to stop any of the services listed and removes from the "running services" list.

## Location Access

- Use wireless - Use wireless services to find locations in applications.

## Security

Set up screen locks: Use slide, face/voice unlock, pattern, PIN or password to lock the screen.

- Pattern: The first time there will be simple unlock instructions and examples. Click "next step" to continue

the security pattern step.

- PIN: Enter PIN number to unlock the screen.
- Password: Use password to unlock the screen

*You may stop the security feature at any time.*

### **Set up SIM card PIN lock**

- SIM card PIN (Personal Identification Number) is used to prevent unauthorized use of SIM card.

To change a blocked PIN code, you will need to unlock the SIM lock then go to the Change Password screen. The phone will automatically prompt you enter the old PIN code and ask to enter a new PIN code twice. The phone will then prompt you that the change was successful. If you enter the PIN incorrectly three times, the SIM and PIN codes will be automatically locked. You will need the PUK code to unlock the phone which is available through your service provider. If you enter the PUK code incorrectly 10 times, the SIM card will be permanently locked. Please see your service provider for a new SIM card.

- Password visible – Make the password visible when it's typed.
- Use security credentials - Allow applications to visit security credentials or other credentials.
- Install the encrypted certificate.

### **Language and Input**

- Language – Change the language of the phone.
- Custom Dictionary - Add or delete words to the custom dictionary.
- Keyboard Settings – Haptic vibration, Haptic tones, Capitalizing, Speech Input, Inputting words, Predictive text function, Auto-Text, Input keyboard method

### **Backup & Reset**

- Backup Data – Will back up all application data, WLAN passwords, and other settings to Google's servers
- Restore to Factory Settings - Clear all data stored on the

phone.

## **Date & Time**

- Automation - Use date and time provided by Network.
- Date and Time adjustment.
- Time Zone - Select Time Zone according to where your location.
- Select Date Format - There are 3 kinds of formats you can choose from: Month-Day-Year, Day-Month-Year and Year-Month-Day, and Year-Month-Day which is the default setting

## **Schedule Power On & Off**

- Schedule power on and off

## **Accessibility**

- Power button ends call
- Speak Passwords
- Web accessibility

## **Developer Options**

If the phone does not display Developer options, to access: Press “Build number” seven (7) times in the about phone tab in settings.

- The developer options gives access to USB Debugging and other developer options

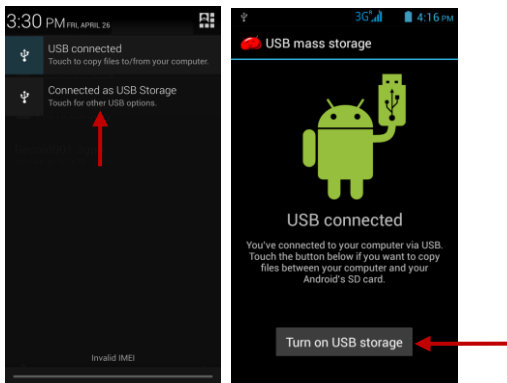
## **About Phone**

- Phone information status and firmware updates

# Storage

Connect the phone with the USB cable provided. Once connected, a

connection interface will appear. Once in the connection mode interface, select USB mass storage and turn on from the connection screen to be able to transfer files.



Some system settings and UI options may vary depending on final SW version.

## FCC Regulations:

This mobile phone complies with part 15 of the FCC Rules. Operation is subject to the following two conditions: (1) This device may not cause harmful interference, and (2) this device must accept any interference received, including interference that may cause undesired operation.

This mobile phone has been tested and found to comply with the limits for a Class B digital device, pursuant to Part 15 of the FCC Rules. These limits are designed to provide reasonable protection against harmful interference in a residential installation. This equipment generates, uses and can radiated radio frequency energy and, if not installed and used in accordance with the instructions,

may cause harmful interference to radio communications. However, there is no guarantee that interference will not occur in a particular installation. If this equipment does cause harmful interference to radio or television reception, which can be determined by turning the equipment off and on, the user is encouraged to try to correct the interference by one or more of the following measures:

- Reorient or relocate the receiving antenna.
- Increase the separation between the equipment and receiver.
- Connect the equipment into an outlet on a circuit different from that to which the receiver is connected.
- Consult the dealer or an experienced radio/TV technician for help.

**FCC Note:**

Caution: Changes or modifications not expressly approved by the party responsible for compliance could void the user's authority to operate the equipment.

# RF Exposure Information (SAR)

This phone is designed and manufactured not to exceed the emission limits for exposure to radio frequency (RF) energy set by the Federal Communications Commission of the United States.

During SAR testing, this device was set to transmit at its highest certified power level in all tested frequency bands, and placed in positions that simulate RF exposure in usage against the head with no separation, and near the body with the separation of 10 mm. Although the SAR is determined at the highest certified power level, the actual SAR level of the device while operating can be well below the maximum value. This is because the phone is designed to operate at multiple power levels so as to use only the power required to reach the network. In general, the closer you are to a wireless base station antenna, the lower the power output.

The exposure standard for wireless devices employing a unit of measurement is known as the Specific Absorption Rate, or SAR. The SAR limit set by the FCC is 1.6W/kg.

This device is complied with SAR for general population /uncontrolled exposure limits in ANSI/IEEE C95.1-1992 and had been tested in accordance with the measurement methods and procedures specified in IEEE1528. This device has been tested and meets the FCC RF exposure guidelines when tested with the device directly contacted to the body.

The FCC has granted an Equipment Authorization for this model phone with all reported SAR levels evaluated as in compliance with the FCC RF exposure guidelines. SAR information on this model phone is on file with the FCC and can be found under the Display Grant section of [www.fcc.gov/oet/ea/fccid](http://www.fcc.gov/oet/ea/fccid) after searching on FCC ID: YHLBLUSTAR40.

For this device, the highest reported SAR value for usage against the head is 0.61 W/kg, for usage near the body is 1.43 W/kg.

While there may be differences between the SAR levels of various phones and at various positions, they all meet the government requirements.

SAR compliance for body-worn operation is based on a separation distance of 10 mm between the unit and the human body. Carry this device at least 10 mm away from your body to ensure RF exposure level compliant or lower to the reported level. To support body-worn operation, choose the belt clips or holsters, which do not contain metallic components, to maintain a separation of 10 mm between this device and your body.

RF exposure compliance with any body-worn accessory, which contains metal, was not tested and certified, and use such body-worn accessory should be avoided.