

User Guide

1. For your safety	1
2. Learn about the phone	2
● Overview	2
● Function Keys	2
3. Before using	2
● Insert Micro SIM cards and SD card	2
● Charge the Battery	4
4. Getting started.....	4
● Basic Function	4
● Home screen.....	4
● Touch screen	6
5. Communication	7
● Make a call	7
● Ongoing call.....	8
● Incoming call	8
● Send a Message	8
6. Multimedia.....	9
● Camera	9
● Gallery	11
● Music	12
7. Connection.....	12
● Airplane mode	13
● WLAN.....	13
● Bluetooth.....	13
● USB	14
8. Advanced Features	14
● Do not disturb.....	14
● Private space	14
● Super screenshot.....	15
● Extreme mode	17
9. Operation	17
● Smart gestures	18
● Suspend option	19
10. Warnings and notes	19

1. For your safety

Please read this manual before using the cell phone to ensure safe and proper use.



SWITCH OFF IN HOSPITALS

Please abide by relevant provisions or regulations. Please turn off your mobile phone near medical equipment.



SWITCH OFF WHEN REFUELING

Don't use the phone at a refueling point. Don't use near fuel or chemicals.



MICRO SIM CARDS AND SD CARD ARE PORTABLE

Keep your phone, phone parts and accessories out of children's reach.



BATTERY

Please do not destroy or damage the battery, it can be dangerous and cause fire.

Please do not throw battery in fire to avoid hazard.

When battery cannot be used, please dispose in safe environment.

Do not try to dismantle the battery.

If the battery or the charger is broken or old, please stop using them, and replace with certified genuine battery



USE QUALITY EQUIPMENT

Use authorized equipment to avoid danger



ROAD SAFETY COMES FIRST

Give full attention while driving, Park before using your phone. Please follow traffic rules of local city town.



INTERFERENCE

All wireless devices may be susceptible to cause interference, which could affect performance.

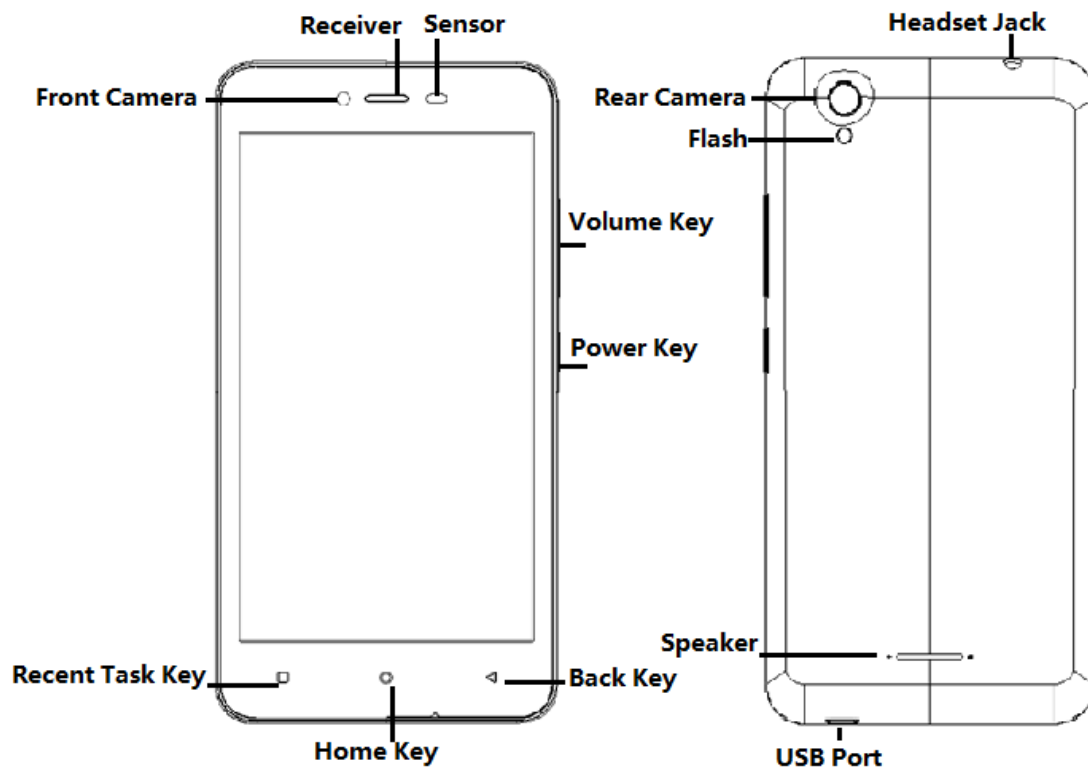


SWITCH OFF IN AIRCRAFT

Wireless devices can cause interference in aircraft. It's not only dangerous but also illegal to use mobile phone in an aircraft.

2. Learn about the phone

Overview



Function Keys

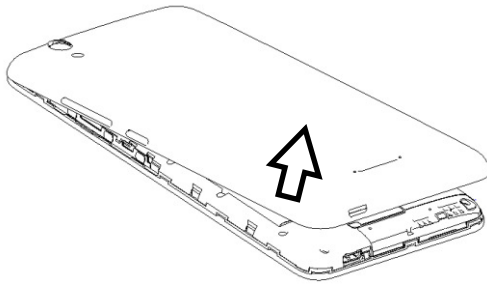
Keys	Function
Power key	a) Press to turn on/off the screen. b) Press and hold to power off the phone or reboot.
Volume key	Press to adjust the volume of device.
Recent task key	Tap to open the list of recently used apps. Shake the phone to clean all of recently used apps. Click the circle button to clean all of recently used apps.
Home key	Tap to return to Home screen.
Back key	Tap to return to the previous screen.

3. Before using

The phone is a Dual SIM mobile that allows you to use two mobile networks.

Insert Micro SIM cards and SD card

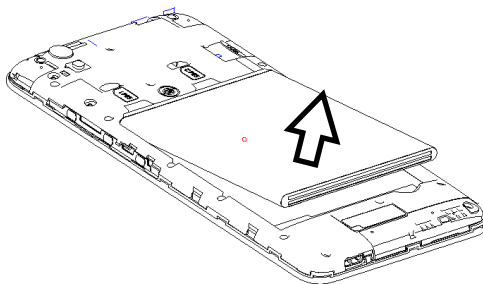
1. Switch off the mobile phone. Then remove the cover as shown in the figure.



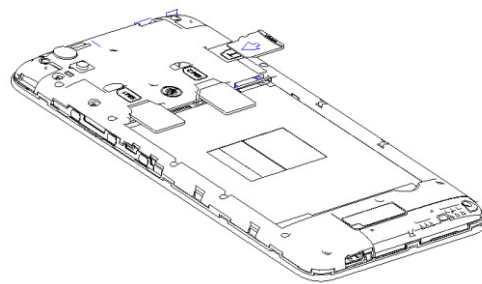
✓ **Note:** Please start from the bottom left while removing the cover, and flip it up at the bottom.

2. Remove the battery and insert the Micro SIM and SD cards to the card slots correctly.

①

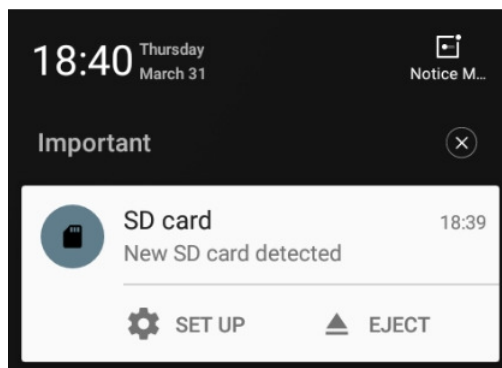


②



✓ **Note:** SD card can be used as internal storage.

Option 1: Notification Center --> tap the notice to set up --> Use as internal storage --> Format as internal storage



Option 2: Settings --> Advanced settings-->Storage & USB

3. Put back the battery and cover.

✓ **Note:**

- Micro SIM cards and SD card do not support hot plugging.
- Do not remove the cards while the device is transferring data. Doing so may cause data to be lost or damage to the cards and device.
- The Micro SIM card and SD card are small parts. Please keep away from Children to avoid swallowing the card by accident.
- Please do not touch the metal surface of Micro SIM and SD cards and keep them

away from electromagnetic field to avoid damaged data.

Charge the Battery

Charge the battery before using it. Connect the USB cable to the USB power adaptor, and then plug the end of the USB cable into the USB Port.



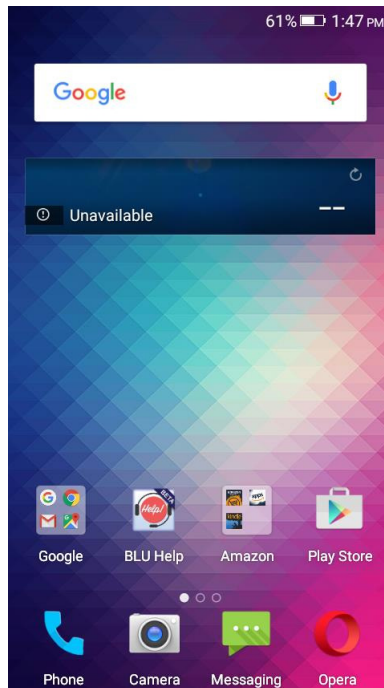
4. Getting started

Basic Function

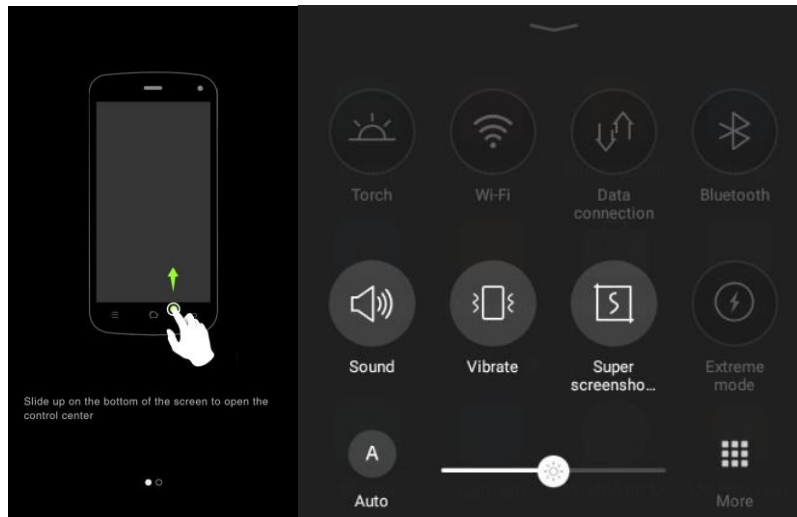
- Turn on the phone
Press and hold the power key for a while to turn on the phone.
- Turn off the phone
Long press the power key until a menu shows. Choose “Power off” to turn off the phone.
- Restart the phone
Long press the power key until a menu shows. Choose “Reboot” to restart the phone.
- Lock the screen
Option 1: Press the power key to turn off the screen and lock it
Option 2: In the Home screen, double tap the screen to lock it.
Option 3: The screen will auto lock if you don't use the phone for a while.
- Unlock the screen
Press the power key, and then slide to top for unlocking.

Home screen

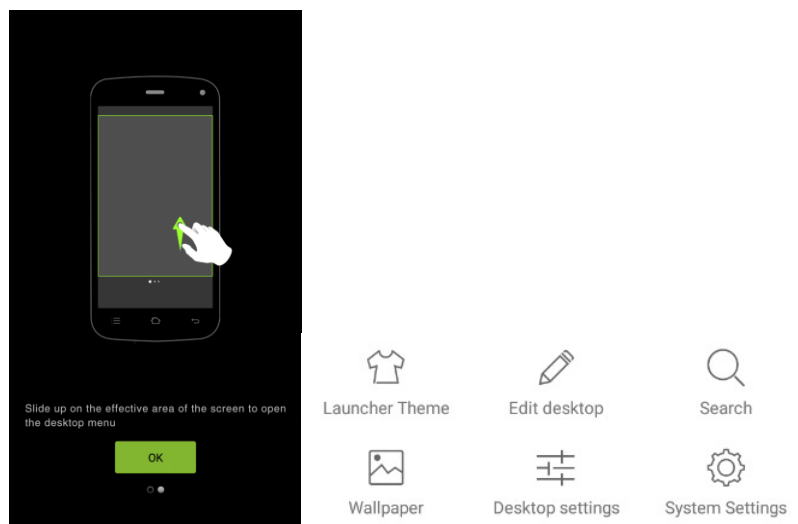
The Home screen is your starting point to access all the features on your phone. It displays application icons, widgets, and other features. You can customize the Home screen with different wallpaper and display the items you want.



- Status Bar
At the top of the screen, it displays the time, signal, battery information, and icons for notifications that you've received.
- Notification Center
Option 1: Swipe down from the top edge to see more detail of the new notification, such as messaging, missed call, Wi-Fi network available etc. Tap the notification and drag to left or right to delete it.
Option 2: **Settings --> Notification and control center --> Notification Center**
 - Notice management
 - Card display notifications in lockscreen
 - Notification access
 - Display network speed
- Control Center
Option 1: Slide up on the bottom of the screen to open the control center.
Option 2: **Settings --> Notification and control center --> Control Center**
In the control center, it's a quick access to Torch, Wi-Fi, Data connection, Bluetooth, Sound, Vibrate, Super screenshots and Extreme mode. Tap "More", and then drag to adjust the icons in control center.



- Desktop Menu
Slide up on the effective area of the screen to open the desktop menu. You can change the Launcher Theme & Wallpaper, Edit desktop. It's a quick access to Desktop settings, System settings and Search.



- Move an application
Touch & hold the icon you want to move. Drag the icon to move or cross at the edge of the screen to move into another screen.
- Uninstall an application
Touch & hold the icon you want to uninstall. On the top of the icon will appear "x". Tap it to uninstall.
- Creating a folder
Drag an icon on the top of another one to create a folder. Open the folder and then tap the folder name to rename it.

Touch screen

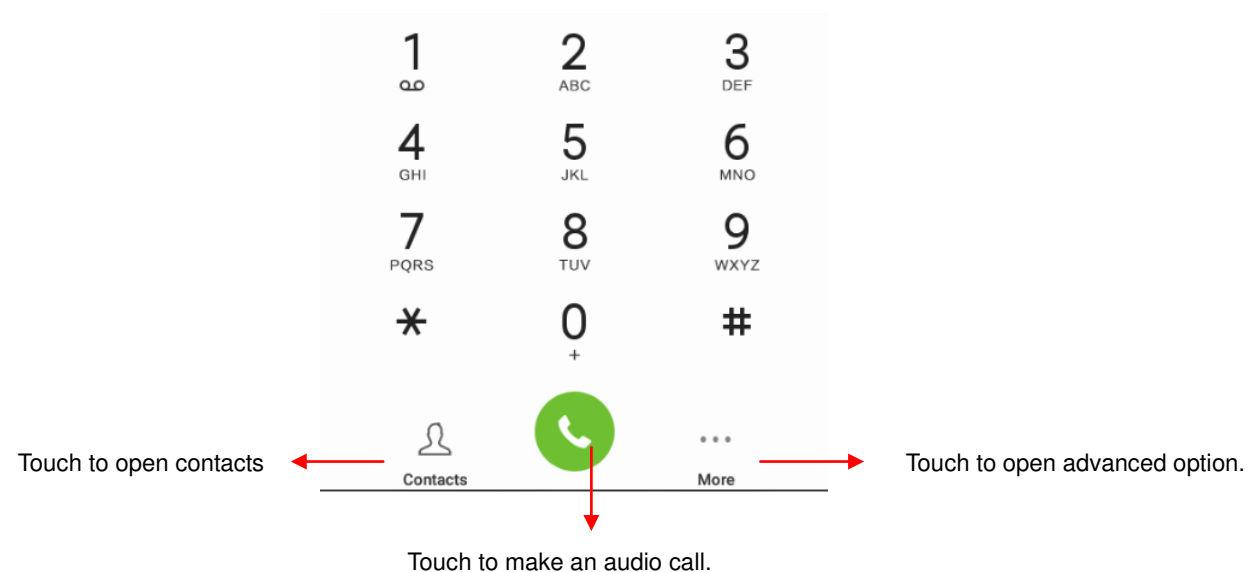
The way to control mobile phone is using your finger on touch icons, buttons, menu items, the onscreen keyboard, and other items on the touch screen.

- **Touch:** To act on items on the screen, such as application and settings icons, to type letters and symbols using the onscreen keyboard, or to press onscreen buttons, you simply touch them with your finger.
- **Touch & hold:** Touch & hold an item on the screen by touching it and not lifting your finger until an action occurs.
- **Drag:** Touch & hold an item for a moment and then, without lifting your finger, move your finger on the screen until you reach the target position. You can drag items on the Home screen to reposition them and you can drag to open the Notification Center.
- **Swipe or slide:** To swipe or slide, quickly move your finger across the surface of the screen, without pausing when you first touch (so you don't drag an item instead). For example, you slide the screen up or down to scroll a list, and in the same way Calendar views you can swipe quickly across the screen to change the range of time visible.
- **Pinch:** In some applications (Such as Maps and Gallery) you can zoom in and out by placing finger and thumb on the screen at same time and pinching them out together (to zoom out) or spreading them apart (to zoom in).
- **Rotate the screen:** On most screens, the orientation of the screen rotates with the phone as you turn it from upright to its side and back again. You can turn this feature on and off.

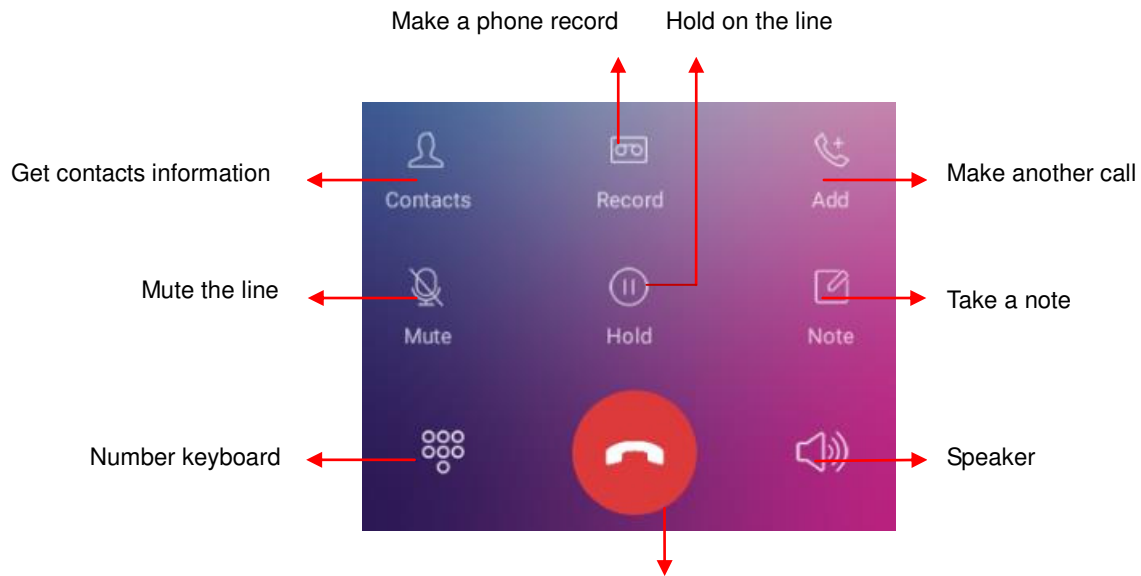
5. Communication

Make a call

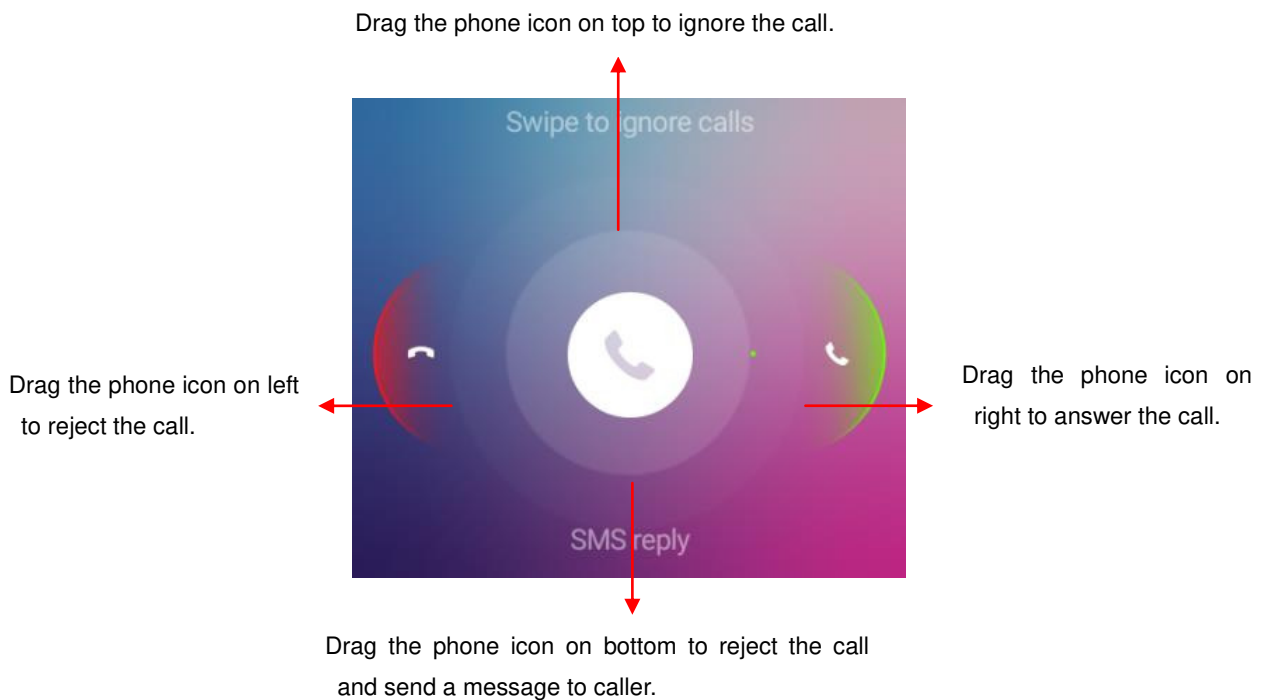
- Touch the phone icon on the Home screen.
- Enter the phone number you want to dial.
- Touch the phone icon to dial the number that you entered.



🚦 Ongoing call



🚦 Incoming call



✓ **Note:**

You can make an emergency call without SIM cards if the locations are available for the network service. But you should not rely on it for emergencies. It's also depends on the local mobile network operator. For more information, please contact with operator.

🚦 Send a Message

You can use this phone to exchange text messages and multimedia messages with your friends on their mobile phones. The messages come to and from the same contact or phone number will be visible into a single conversation, so you can see your entire message history with a person conveniently.

Enter text

- Tap the text field to see onscreen keyboard.
- Tap the keys on the keyboard to type; the characters you've entered appear in a strip above the keyboard. With suggestions for the word you are typing to the right.
- Use the Delete key to erase characters to the left of the cursor.
- When you're finished typing, press back to close the keyboard.

Choose an input language and keyboard mode

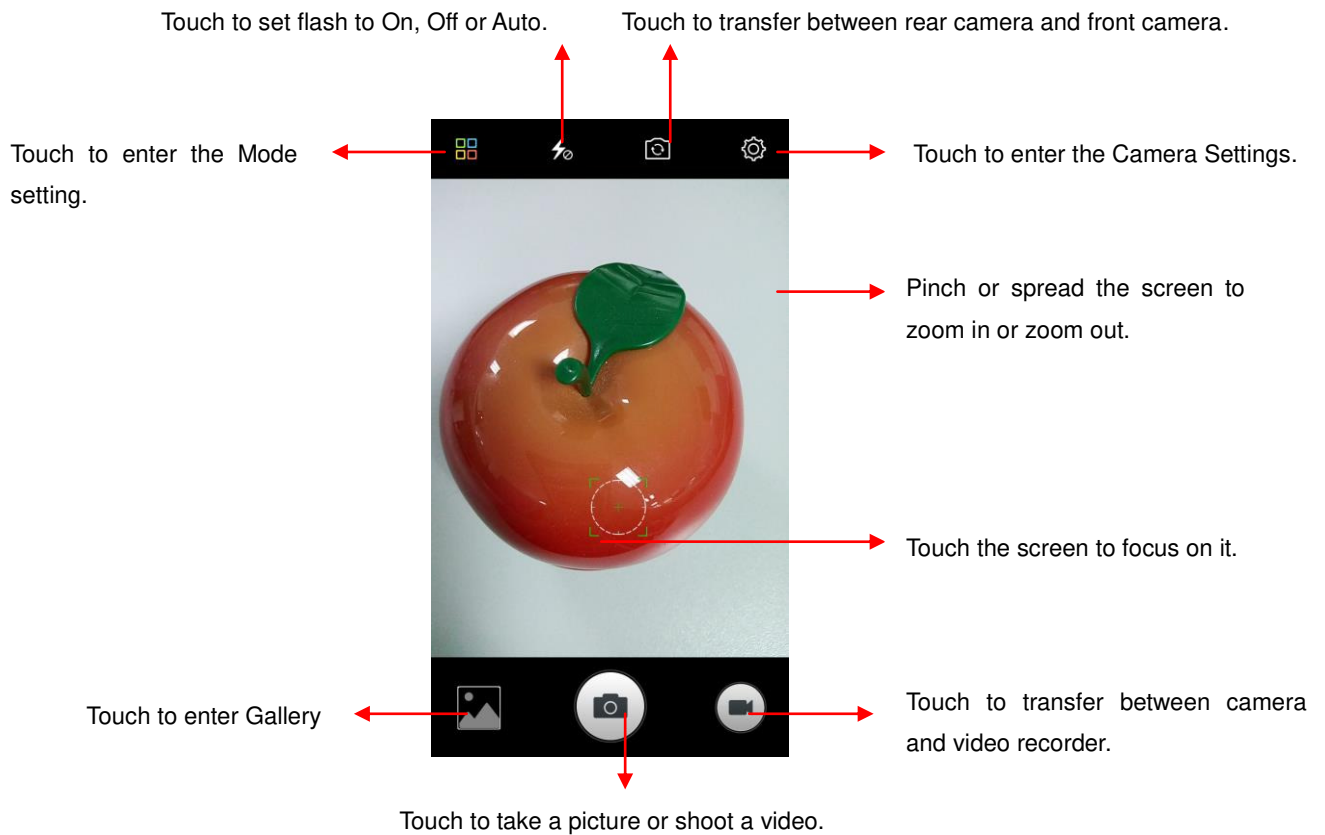


6. Multimedia

Camera

Camera is a combination of camera and camcorder that you use to shoot and share pictures and videos. Tap the image on the camera screen where should focus on. You can also change camera setting like transfer front and rear camera, adjust the exposure on this screen.

Take a photo



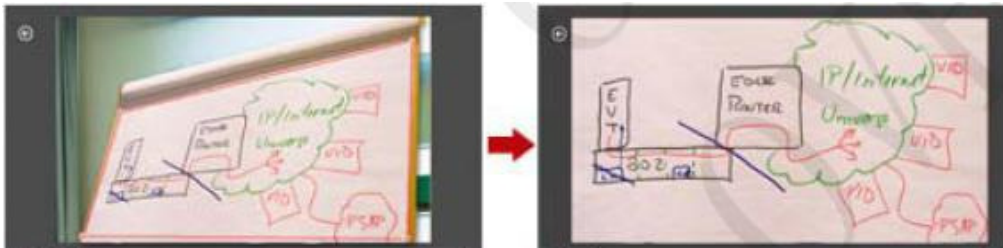
- **Normal Mode** - Take a perfect photo.
- **Face Beauty Mode** - DIY your face with Smoother, Whitening, Slimming, Enlarger. Drag the slider to adjust it.
- **Filter Mode** - Multiple filters can select from Normal, Light gray, B&W, Aestheticism, Plain, Memory, Nostalgia, Years and Classical.
- **HDR Mode** - Improve the effect of bright and dark portions at the same time. For Rear camera only.



- **Panorama Mode** - Press camera button and move the phone on one direction slowly. For Rear camera only.
- **Night Mode** - Through nightscape noise reduction, we see the thing as it actually is. For Rear camera only.



- **PicNote Mode** - Intelligent crop and optimize the text photo once shooting. For Rear camera only.



- **Smart Scan Mode** - Align QR/Bar code within frame to scan.
- **GIF Mode** – Shooting multiple images to form a simple animation.
- **Mood photo Mode** - Easy to shoot a good photo like Polaroid. You can select a filter and write down your mood.

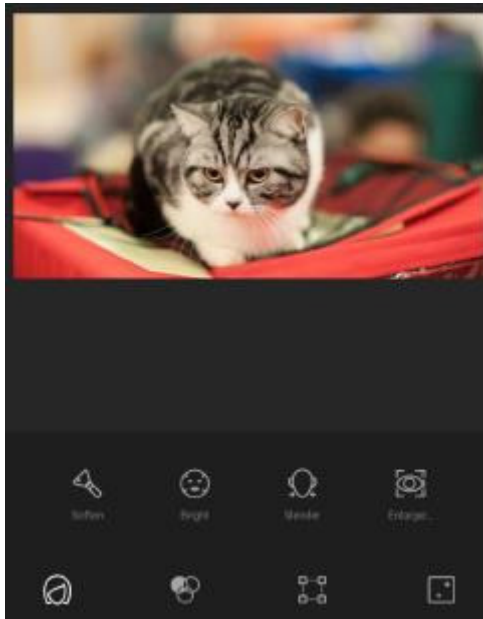
Shoot a Video

- Tap video icon to switch it for video capturing mode.
- Adjust the quality and other settings if you wish or leave them on automatic mode.
- Point the lens to frame the scene where you want to start.
- Touch the Start Video icon. Camera starts shooting the video.
- Touch Stop video icon to stop shooting. An image from your most recent video is displayed as a thumbnail at the bottom left.

Gallery

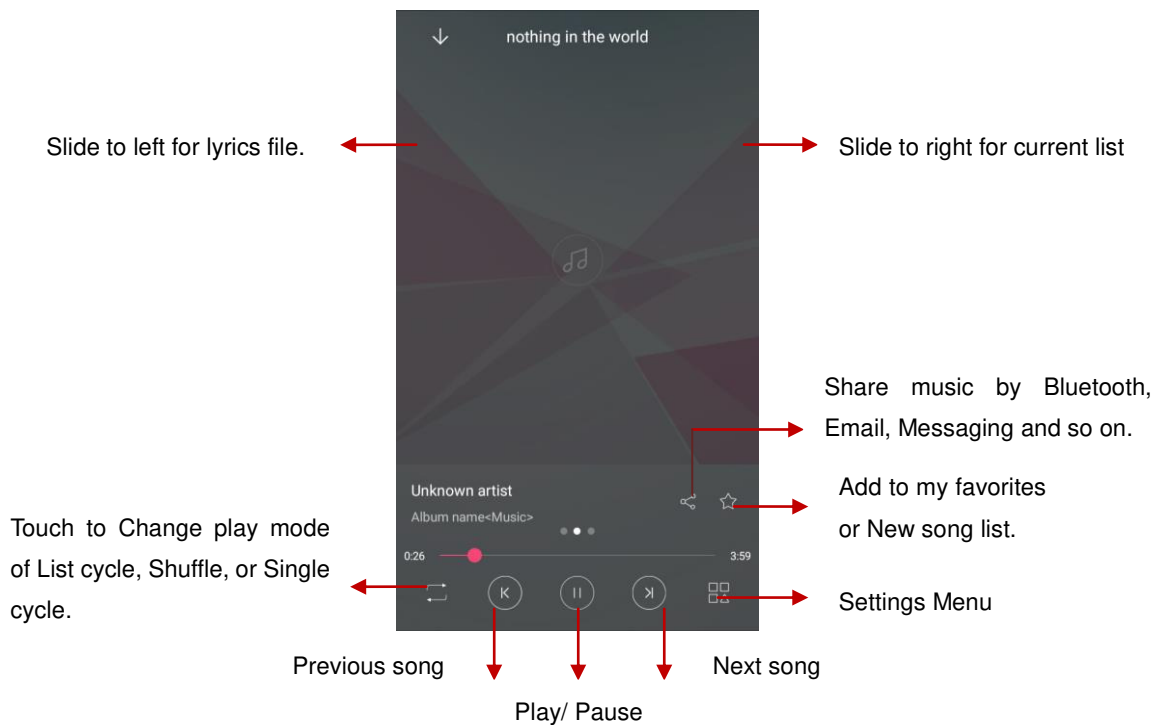
Touch the Gallery icon in the Launcher to view albums of your pictures and videos which you've taken from camera. You may share the pictures and videos with your friends by Messaging, Email, Bluetooth and so on.

- To encrypt a picture: Touch "Encrypt" while you are browsing a picture. The picture will be encrypted and hide into Private Album.
- To View Private Album: **Gallery--> Slide down with two fingers to enter private album**
- To beautify a picture: Tap "Beautify" and then choose the options to improve photo.



🎵 Music

You can use Music player to organize and listen to music and other audio files that you transfer to your phone from your computer.



7. Connection

Your phone can connect to a variety of networks and devices, including mobile networks for voice and data transmission, WLAN data networks, and Bluetooth devices, such as headsets. You can also connect your phone to a computer, to transfer files from your phone storage, and share your phone's mobile data connection via USB or as a portable

WLAN hotspot.

Airplane mode

Option1: **Settings-->More-->Airplane mode** to turn it on

Option2: Swipe up from the bottom edge to open control center-->More--> Airplane mode
Some locations like Airplane may require you to turn off your phone's Cellular network, WLAN, and Bluetooth wireless connections. You can turn off all these wireless connections at once by placing your phone on Airplane mode.

WLAN

WLAN is a wireless networking technology that can provide internet access at distance of up to 100 meters, depending on the WLAN router and your surroundings. You can configure the WLAN as follow:

- **Settings-->WLAN**, check **WLAN** to turn it on.
- Enter **WLAN**. The phone scans for available WLAN networks and displays the names of those it finds. Secured networks are indicated with a Lock icon. The phone will auto login to the network if you have previously connected.
- Touch a network to connect to it.
If the network is open, you are prompted to confirm that you want to connect to that network by touching connect. If the network is secured, you're prompted to enter a password or other credentials.

Bluetooth

Bluetooth is a short-range wireless communications technology that devices can use to exchange information over a distance of about 10 meters. The most common Bluetooth devices are headphones for making calls or listening to music, hands-free kits for cars, and other portable device, including laptops and cell phones.

To send a file

- **Settings--> Bluetooth**, check **Bluetooth** to turn it on.
- Enter **File Explorer** to select a file, Select **More--> Share--> Bluetooth**.
- Touch **Scan for devices**, the phone will scan for and display the names of all available Bluetooth devices in range.
- Touch the names of the other device in the list to pair them. After pairing the file will be sent.

To receive a file

Settings--> Bluetooth, check **Bluetooth** to turn it on. Ensure your Bluetooth has been connected within visibility time.

You can receive files from the devices which are paired with yours. The file you received will be saved to the "**Bluetooth**" folder in the File Explorer.

To connect to a Handsfree device

- Turn on the Handsfree device, make it in a searchable state;

- **Settings-->Bluetooth**, Select “**Search for devices**”;
- After searching for the Handsfree device, Select it in the list to pair.
- After pairing, you can use the Handsfree device to listen to music, video and receive call.

USB

You can connect the phone to your computer with a USB cable to transfer music, pictures, and other files.

Turn on USB connection

1. Connect the phone to your computer with a USB cable.
2. In notification center, tap **USB for charging** to open USB connection.
3. Choose the USB options.

Charge only, connected as a USB for charging.

File copy, Transfer music, videos, documents and other documents (MTP).

View photos, Browse photos in DCIM and Pictures file folder (PTP).

Install driver - If you are unable to connect, select this item and install the drive to the computer.

✓ **Note:**

Do not disconnect the USB cable from the phone when you are transferring files. Doing so may cause data lose or phone damage.

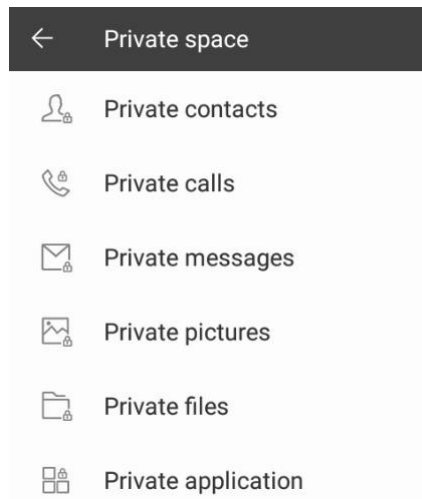
8. Advanced Features

Do not disturb

When Do Not Disturb is enabled calls and alerts that arrive while locked will be silenced. Except the apps which can be allowed to disturb. A moon icon will appear in the status bar. You can add rules or do priority allows to important notice, SMS, Call, and Repeated Calls.

Private space

In home screen or file explorer, double fingers to slide down to view encrypted files.



🚩 Super screenshot

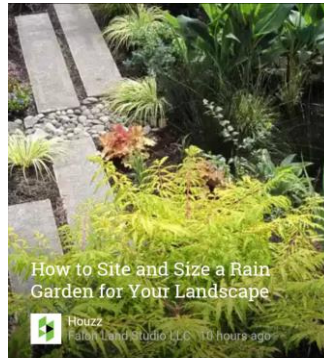
In the control center,tap to access Super screenshots. Super screenshots includes Normal screenshots, Long screenshots and Part screenshots. To view on: **File Explorer --> Phone Storage --> Screenshots**

- Normal screenshots
Capture 1 page in screenshots.



Rain gardens are growing in popularity as an environmentally friendly way to infiltrate stormwater into the home landscape. They have great potential to decrease overall demand on municipal sewer systems and are a cost-effective means of effectively managing storm runoff on site.
There are many different ways of creating rain gardens, and the first step is to determine where

- Long screenshots
Capture 10 pages at most in screenshots. It's easy for you to save conversations in commutation tools, articles in website and so on.



Rain gardens are growing in popularity as an environmentally friendly way to infiltrate stormwater into the home landscape. They have great potential to decrease overall demand on municipal sewer systems and are a cost-effective means of effectively managing storm runoff on site.

There are many different ways of creating rain gardens, and the first step is to determine where you'll put yours and how big it will be. In this series, we'll explore the basics of designing a rain garden. You can use it to guide a DIY installation or to gain a fuller understanding of rain garden best practices.

[View original article with high res images](#)



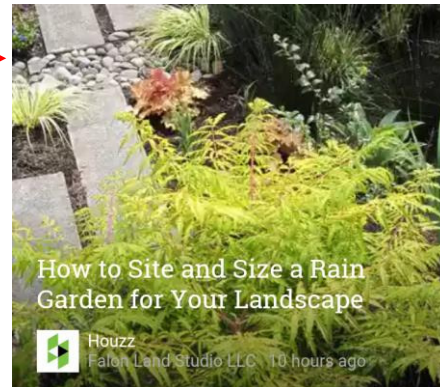
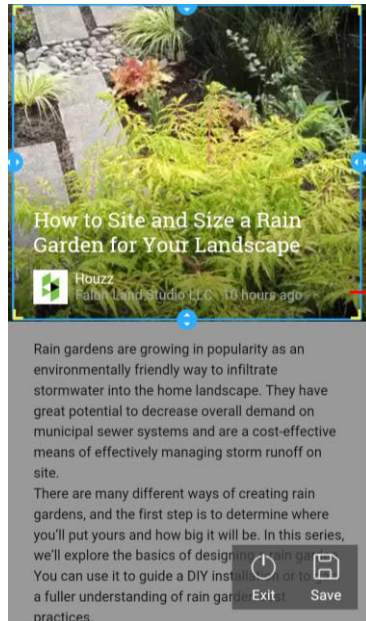
by *Anne Roberts Gardens, Inc.* | See large photo

What is a Rain Garden? Rain gardens are planted areas that are designed to capture and slowly allow rainwater and stormwater runoff to infiltrate the landscape. They use natural processes to slow, filter and soak up stormwater, recharging the groundwater and contributing to the overall water quality of our communities.

[Upgrade to the full Houzz experience](#)

by *Banyon Tree Design Studio* | See large photo

- Part screenshots
Capture part size in screenshots. You can adjust the size with square on the screen.



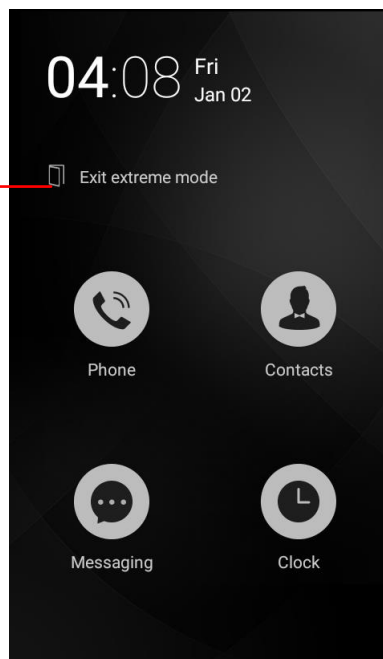
🚩 Extreme mode

Extreme mode lets mobile phone enter the minimalist desktop to extend standby time. But only phone, contacts, messaging and clock can be used during this time.

Access to extreme mode

- 1) Home screen-->Control center-->Tap Extreme mode
- 2) Settings--> Advanced settings --> Manage battery --> Power manager-->Tap Extreme power saving mode

Tap to exit the extreme mode



9. Operation

Smart gestures

Settings-->Advanced settings--> Smart gestures to turn it on.

The smart gestures system supports a variety of experience and control, through gesture can be more convenient operation, some of the smart gesture functions will not work while flip cover is closed.

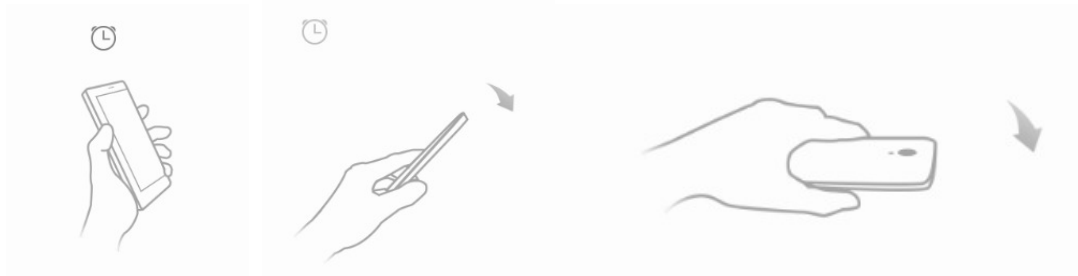
- Pause alarm

Settings--> Advanced settings--> Smart gestures -->Select Pause alarm

Flip back the phone to pause the on-going alarm.

①

②



- Smart vibration remind

Settings--> Advanced Settings--> Smart Gestures-->Select Smart vibration remind

Phone vibrate to remind the unread message or missed call notification in sleep mode.


①

②



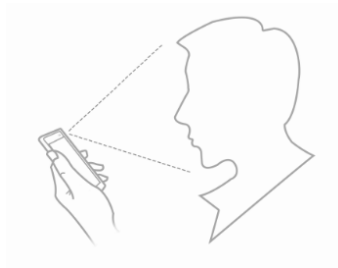
- Smart bright screen

Settings--> Advanced settings--> Smart gestures-->Select Smart bright screen

When front camera detects you are viewing screen, the screen can be maintained normally. Enable this function, the status bar will display this icon .

The following scenario, the function maybe failed:

- User doesn't face on the screen
- The light is too strong or too dark
- Front camera is used by other applications



- Double click wake

Settings--> Advanced settings --> Smart gestures -->Select Double click wake

In sleep screen, quick double tapping can wake up the mobile phone.

①



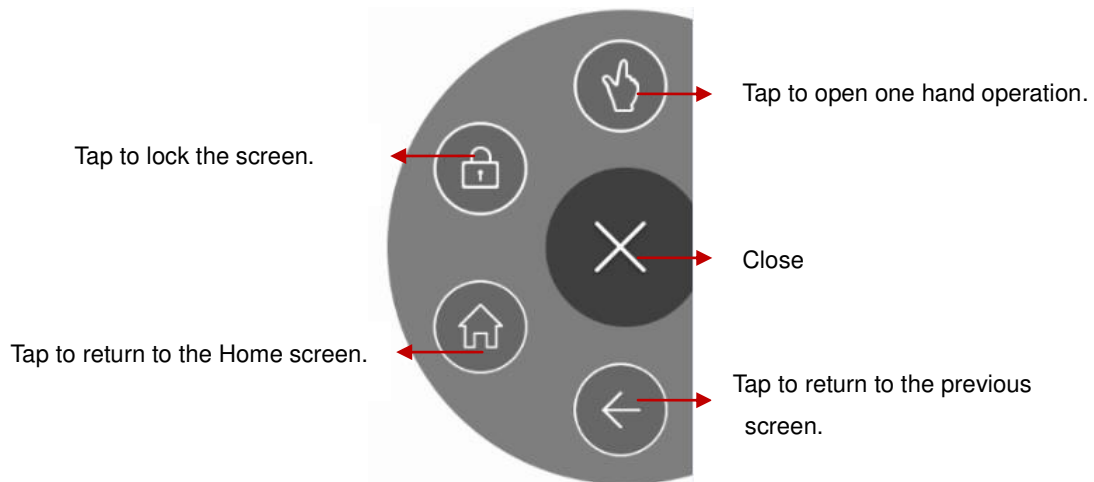
②



Suspend option

It's a quick access to lock the screen, return to Home screen or previous screen, and one hand operation. Long press can hide it in the notification bar.

Settings--> Advanced settings--> Suspend option to turn it on.



10. Warnings and notes

Operational Warnings

IMPORTANT INFORMATION ON SAFE AND EFFICIENT OPERATION. Read this information before using your phone. For the safe and efficient operation of your phone, observe these guidelines:

Potentially explosive at atmospheres: Turn off your phone when you are in any areas with a potentially explosive atmosphere, such as fueling areas (gas or petrol stations, below deck on boats), storage facilities for fuel or chemicals, blasting areas and areas near electrical blasting caps, and areas where there are chemicals or particles (Such as metal powders, grains, and dust) in the air.

Interference to medical and personal Electronic Devices: Most but not all electronic

equipment is shielded from RF signals and certain electronic equipment may not be shielded against the RF signals from your phone.

Audio Safety: This phone is capable of producing loud noises which may damage your hearing. When using the speaker phone feature, it is recommended that you place your phone at a safe distance from your ear.

Other Media Devices, hospitals: If you use any other personal medical device, consult the manufacture of your device to determine if it is adequately shielded from external RF energy. Your physician may be able to assist you in obtaining this information. Turn your phone OFF in health care facilities when any regulations posted in these areas instruct you to do so. Hospitals or health care facilities may be using equipment that could be sensitive to external RF energy.

Product statement on handling and use: You alone are responsible for how you use your phone and any consequences of its use.

You must always switch off your phone wherever the use of a phone is prohibited. Use of your phone is subject to safety measures designed to protect users and their environment. Always treat your phone and its accessories with care and keep it in a clean and dust-free place

Do not expose your phone or its accessories to open flames or lit tobacco products.

Do not expose your phone or its accessories to liquid, moisture, or high humidity.

Do not drop, throw, or try to bend your phone or its accessories

Do not use harsh chemicals, cleaning solvents, or aerosols to clean the device or its accessories.

Do not attempt to disassemble your phone or its accessories; only authorized personnel must do so.

Do not expose your phone or its accessories to extreme temperatures, minimum 32°F and maximum 113°F (0°C to 45°C).

Battery: Your phone includes an internal lithium-ion or lithium-ion polymer battery. Please note that use of certain data applications can result in heavy battery use and may require frequent battery charging. Any disposal of the phone or battery must comply with laws and regulations pertaining to lithium-ion or lithium-ion polymer batteries.

Faulty and damaged products: Do not attempt to disassemble the phone or its accessory. Only qualified personnel must service or repair the phone or its accessory. If your phone or its accessory has been submerged in water, Punctured, or subjected to a severe fall, do not use it until you have taken it to be checked at an authorized service center.

FCC Regulations:

This mobile phone complies with part 15 of the FCC Rules. Operation is subject to the following two conditions: (1) This device may not cause harmful interference, and (2) this device must accept any interference received, including interference that may cause undesired operation.

This mobile phone has been tested and found to comply with the limits for a Class B digital device, pursuant to Part 15 of the FCC Rules. These limits are designed to provide reasonable protection against harmful interference in a residential installation. This equipment generates, uses and can radiated radio frequency energy and, if not installed and used in accordance with the instructions, may cause harmful interference to radio communications. However, there is no guarantee that interference will not occur in a particular installation. If this equipment does cause harmful interference to radio or television reception, which can be determined by turning the equipment off and on, the user is encouraged to try to correct the interference by one or more of the following measures:

- Reorient or relocate the receiving antenna.
- Increase the separation between the equipment and receiver.
- Connect the equipment into an outlet on a circuit different from that to which the receiver is connected.
- Consult the dealer or an experienced radio/TV technician for help.

FCC Note:

Caution: Changes or modifications not expressly approved by the party responsible for compliance could void the user's authority to operate the equipment.

RF Exposure Information (SAR)

This phone is designed and manufactured not to exceed the emission limits for exposure to radio frequency (RF) energy set by the Federal Communications Commission of the United States.

During SAR testing, this device was set to transmit at its highest certified power level in all tested frequency bands, and placed in positions that simulate RF exposure in usage against the head with no separation, and near the body with the separation of 10 mm. Although the SAR is determined at the highest certified power level, the actual SAR level of the device while operating can be well below the maximum value. This is because the phone is designed to operate at multiple power levels so as to use only the power required to reach the network. In general, the closer you are to a wireless base station antenna, the lower the power output.

The exposure standard for wireless devices employing a unit of measurement is known as the Specific Absorption Rate, or SAR.

The SAR limit set by the FCC is 1.6W/kg.

This device is complied with SAR for general population /uncontrolled exposure limits in ANSI/IEEE C95.1-1992 and had been tested in accordance with the measurement methods and procedures specified in IEEE1528.

The FCC has granted an Equipment Authorization for this model phone with all reported SAR levels evaluated as in compliance with the FCC RF exposure guidelines. SAR information on this model phone is on file with the FCC and can be found under the Display Grant section of www.fcc.gov/oet/ea/fccid after searching on FCC ID: YHLBLUSTMLTE.

For this device, the highest reported SAR value for usage against the head is 1.11 W/kg, for usage near the body is 0.97 W/kg.

While there may be differences between the SAR levels of various phones and at various positions, they all meet the government requirements.

SAR compliance for body-worn operation is based on a separation distance of 10 mm between the unit and the human body. Carry this device at least 10 mm away from your body to ensure RF exposure level compliant or lower to the reported level. To support body-worn operation, choose the belt clips or holsters, which do not contain metallic components, to maintain a separation of 10 mm between this device and your body.

RF exposure compliance with any body-worn accessory, which contains metal, was not tested and certified, and use such body-worn accessory should be avoided.

ISED Notice

This device complies with Innovation, Science and Economic Development Canada license-exempt RSS standard(s). Operation is subject to the following two conditions:

- (1) this device may not cause interference, and
- (2) this device must accept any interference, including interference that may cause undesired operation of the device.

Le présent appareil est conforme aux CNR Innovation, Sciences et Développement économique Canada applicables aux appareils radio exempts de licence. L'exploitation est autorisée aux deux conditions suivantes:

- (1) l'appareil ne doit pas produire de brouillage, et
- (2) l'utilisateur de l'appareil doit accepter tout brouillage radioélectrique subi, même si le brouillage est susceptible d'en

This Class B digital apparatus complies with Canadian ICES-003.
Cet appareil numérique de la classe B est conforme à la norme NMB-003 du Canada.

IC: 11492A-STMLTE

ISED Radiation Exposure Statement

This EUT is compliance with SAR for general population/uncontrolled exposure limits in RSS-102 and had been tested in accordance with the measurement methods and procedures specified in IEEE 1528 and IEC 62209. This equipment should be installed and operated with minimum distance 1.0 cm between the radiator and your body. This device and its antenna(s) must not be co-located or operating in conjunction with any other antenna or transmitter.

Cet appareil est conforme aux limites d'exposition DAS incontrôlée pour la population générale de la norme CNR-102 d'Industrie Canada et a été testé en conformité avec les méthodes de mesure et procédures spécifiées dans IEEE 1528 et IEC 62209. Cet appareil doit être installé et utilisé avec une distance minimale de 1.0 cm entre l'émetteur et votre corps. Cet appareil et sa ou ses antennes ne doivent pas être co-localisés ou fonctionner en conjonction avec tout autre antenne ou transmetteur.