

User Manual  
for  
Smartphone  
BLU  
Studio 5.0

# Content

<b>Get Started</b> .....	<b>3</b>
Insert SIM card.....	3
Insert Memory card .....	3
Charge the Battery or Connect to a Computer .....	4
<b>Keys and Parts</b> .....	<b>5</b>
<b>Lock and Unlock the Screen</b> .....	<b>6</b>
<b>Make it yours</b> .....	<b>7</b>
<b>Add Widgets and more icons to Home Screen</b> .....	<b>8</b>
Add widgets and icons to home screen .....	8
Rearrange or remove widgets and icons on your Home screen .....	8
<b>Enter Launcher</b> .....	<b>9</b>
Open and Switch Applications .....	9
Switch to Recently Used Application.....	9
<b>Make a Call</b> .....	<b>10</b>
<b>Call Log</b> .....	<b>11</b>
<b>Reject a Call by Sending a Busy Message</b> .....	<b>12</b>
<b>Add a Contact</b> .....	<b>12</b>
<b>Send and Receive Message(s)</b> .....	<b>13</b>
<b>Browse the Web</b> .....	<b>15</b>
<b>Enjoy Music</b> .....	<b>16</b>
<b>Download Applications From Android Market</b> .....	<b>17</b>
<b>Manage Applications/ Move to SD card</b> .....	<b>18</b>
<b>Maintenance &amp; Safety</b> .....	<b>19</b>

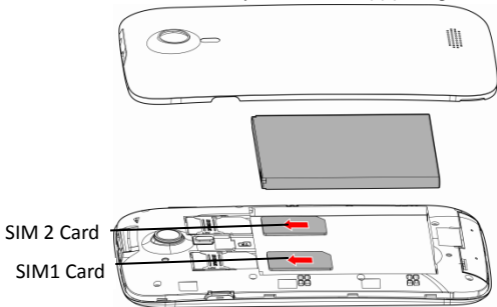
## Get Started

### Insert SIM card

The phone is a Dual SIM mobile phone allowing you to use the facility of two networks.

To insert SIM card(s):

1. Switch off the mobile phone and remove the rear cover and battery.
2. Insert the SIM card correctly in the card slot(s) (See figure below)

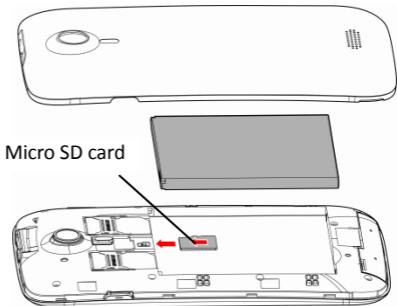


3. Finally insert the battery and replace the rear cover of the mobile phone.

### Insert Memory card

1. Power off the mobile phone and remove the rear cover and battery.
2. Insert the Micro SD card into the slot.
3. Finally insert the battery and the rear cover of the mobile phone.

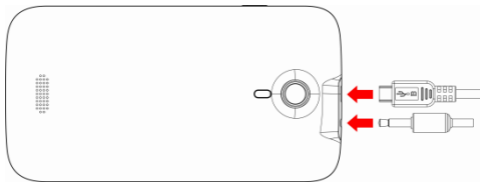
Note: Use only compatible memory cards for use with this device. Incompatible memory cards may damage the card or the device and corrupt the data stored in the card.



### **Charge the Battery or Connect to a Computer**

You can charge your battery using the charger or connect the shielded USB cable (supplied with this phone) to the computer.

Note: Please use the specific battery, otherwise it may cause explosion.



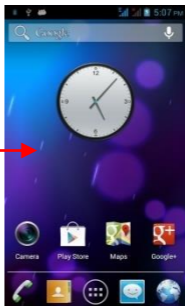
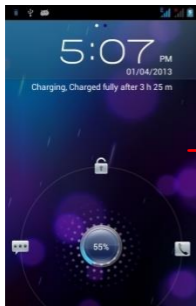
## Keys and Parts

The smart phone gives you marvelous feelings to experience on Camera, Video recorder, FM radio, Music and Sound recorder. Let you install various APPs, games, and more (supports APK format) by downloading from Android Market.



## Lock and Unlock the Screen

Press power button to enter Sleep mode and meanwhile the screen will be locked; press power button again to wake up and then drag the fingerprint up to unlock.



## Make it yours

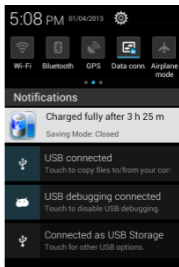
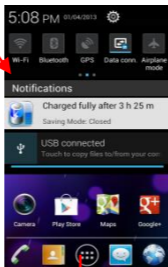
1) Home screen: It is your starting point to access all the features on your phone. It displays application icons, widgets, shortcuts, and other features.

2) Notification Bar: At the top of the screen, the Status bar displays the time, status, and notifications. If there is a new message, missed call or something in the notification bar, you can drag it down to open notification panel and click the desired one to have a view. When you finished, you can close it by dragging the panel up or pressing "Back".

3) Launcher: Touch the Launcher icon at the bottom of the screen to view all installed applications.

Home screen

Notification Bar



Launcher

## Add Widgets and more icons to Home Screen

### Add widgets and icons to home screen

Enter Launcher and long press and hold an application till the screen vibrates, and then release your finger hold.

### Rearrange or remove widgets and icons on your Home screen

a). Long press and hold the widget or icon you want to move. Once the phone vibrates, don't release your hold on the icon. Drag the widget or icon to a new location on the screen. b) . Press and hold on an icon till the phone vibrates, and drag the widgets or icon to remove!

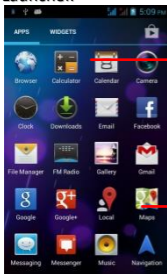




## Enter Launcher

### Open and Switch Applications

The Launcher holds icons for all of the applications on your phone, including any application that you downloaded from Android Market or other sources. On the Home screen, touch the Launcher Icon to open the main menu. Press Home icon or Back icon to close the Launcher.

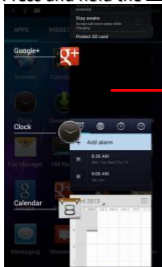


Slide the Launcher left or right to bring more icons into view.

Touch an application to open it.


### Switch to Recently Used Application

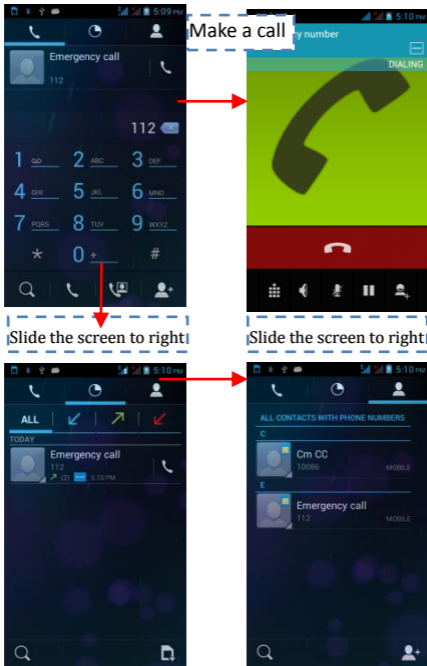
Press and hold the  icon for a few seconds.



Touch to open the application

## Make a Call

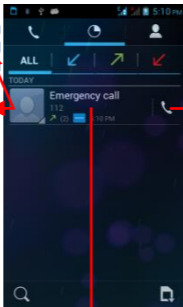
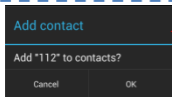
On the start screen choose  and enter a complete phone number to make a call.



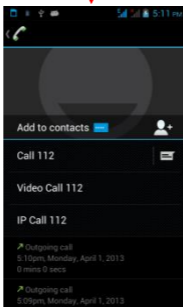
## Call Log

In call log options, you can Make a call, add new contact and send message etc.

Short press this place to add the new Contact.




Touch the icon to dial out.



## Reject a Call by Sending a Busy Message

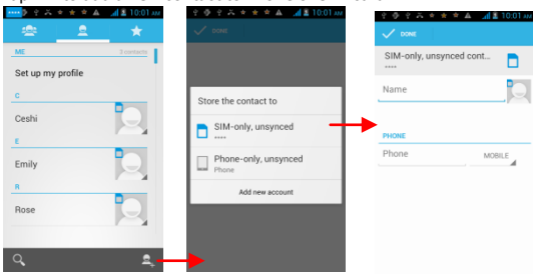
While there is an incoming call, you are inconvenient to accept the call, and then you can send a busy message for rejecting the call.

Drag the circle up to , some busy messages will show on the screen, short tap any of them to send out.

## Add a Contact

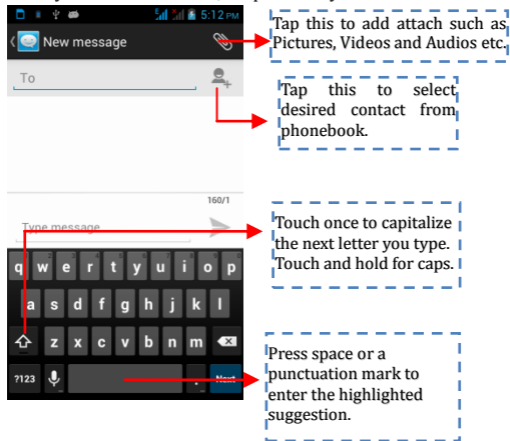
Tap  and enter Contacts and then add a contact (see figure below.)

Tap “+” to add a new contact to Phone or SIM card.



## Send and Receive Message(s)

Enter **Messaging**, and then compose new message. You touch a text field where you want to enter text, to open the keyboard.

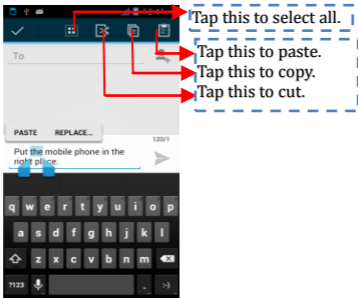


a. When you are composing a new text message, you can select text for cutting or copying. The selected text is highlighted in blue.

- Touch the text field or portion that contains text. (see the below figure)

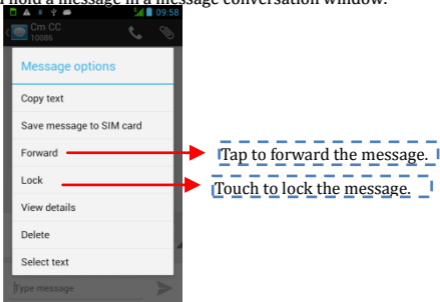
You can select all contexts, copy, cut and paste.

b. When a new message comes, you can read by dragging notification panel and click the message, or entering **Message** to read it directly.



1. Long press one of the all message thread, you can delete the message thread.

2. Touch and hold a message in a message conversation window.



3. Touch **Forward** in the menu that opens.

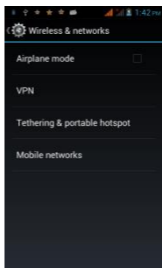
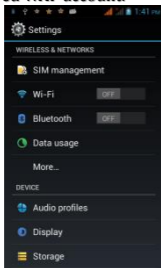
4. Add a contact.

5. Touch Send icon to send the message.

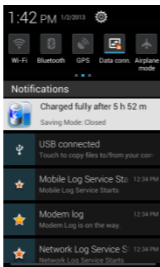
## Browse the Web

a. Set up Internet/Data connection

Enter Settings > Wireless & networks> More, scroll down to find out Mobile network, and then enter "Access Points Names, choose the desired WAP account.



b. Switch on Data connection or WiFi

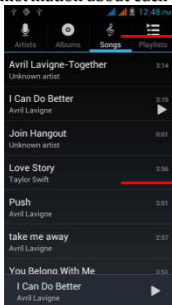


To browse the web, you need switch on Data connection.

If there is WiFi around, you can switch on WiFi to use it browse the web. Some may need password. It supports hotspot function. You can connect the communication via Bluetooth.

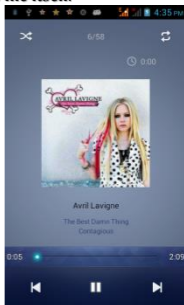
## Enjoy Music

When you copy music to your SD card, the Music player searches the card for music files and builds a catalog of your music, based on information about each file that is stored in the file itself.



Touch a tab to view your library in one of four ways.

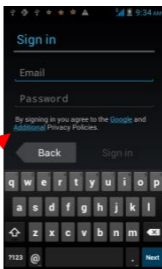
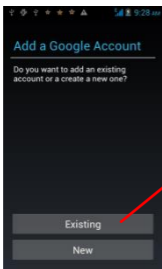
Touch to open the album, songs or playlist.



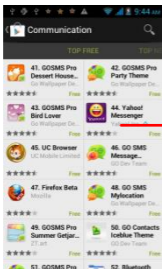


# Download Applications From Android Market

a. Add a Google account



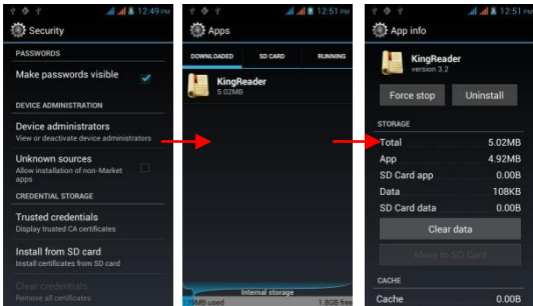
b. Enter Android Market (Play Store) and download apps.



## Manage Applications/ Move to SD card

Enter Setting >Apps, then manage the applications.

As you install downloaded Apps, you need switch on “Unknown sources” in Security settings.



## Maintenance & Safety

Please read and observe the following information for safe and proper use of your phone and to prevent damage. Also, keep the user guide in an accessible place at all the times after reading it.

### 1. After sales service

Kindly refer to the Warranty Card provided in the sales package box.

### 2. Charger and Adapter Safety

Charger and adapter are designed for indoor use only.

### 3. Battery Information and Care

- Please use the specific battery, otherwise it will cause explosion.
- Please dispose of your battery properly.
- Do not disassemble or short-circuit the battery.
- Keep the battery's metal contacts clean.
- Recharge the battery after long periods of non-use to maximize battery life.
- Battery life will vary due to usage patterns and environmental conditions.
- The self-protection function of the battery cuts the power of the phone when its operation is in an abnormal status. In this case, remove the battery from the phone, reinsert it, and turn the phone on.

### 4. General Notice

Using a damaged battery or placing a battery in your mouth may cause serious injury.

- Do not place items containing magnetic components such as a credit card, phone card, bank book, or subway ticket near your phone. The magnetism of the phone may damage the data stored in the magnetic strip.
- Talking on your phone for long period of time may reduce call quality due to heat generated during use.
- When the phone is not used for a long period time, store it in a safe place with the power cord unplugged.
- Using the phone in proximity to receiving equipment (i.e. TV or Radio) may cause interference to the phone.

- Do not immerse your phone in water. If this happens, remove the battery and take it to an Authorized Service Center.
- Do not paint your phone.
- The data saved in your phone might be deleted due to careless use, repair of the phone, or upgrade of the software. Please backup your important phone numbers. (Ring tones, text messages, voice messages, picture, and videos could also be deleted.) The manufacturer is not liable for damage due to the loss of data.
- Do not turn your phone on or off when the phone is close to your ear.

## FCC Regulations:

This mobile phone complies with part 15 of the FCC Rules. Operation is subject to the following two conditions: (1) This device may not cause harmful interference, and (2) this device must accept any interference received, including interference that may cause undesired operation.

This mobile phone has been tested and found to comply with the limits for a Class B digital device, pursuant to Part 15 of the FCC Rules. These limits are designed to provide reasonable protection against harmful interference in a residential installation. This equipment generates, uses and can radiated radio frequency energy and, if not installed and used in accordance with the instructions, may cause harmful interference to radio communications. However, there is no guarantee that interference will not occur in a particular installation. If this equipment does cause harmful interference to radio or television reception, which can be determined by turning the equipment off and on, the user is encouraged to try to correct the interference by one or more of the following measures:

- Reorient or relocate the receiving antenna.
- Increase the separation between the equipment and receiver.
- Connect the equipment into an outlet on a circuit different from that to which the receiver is connected.
- Consult the dealer or an experienced radio/TV technician for help.

Caution: Changes or modifications not expressly approved by the party responsible for compliance could void the user's authority to operate the equipment.

## RF Exposure Information (SAR)

This phone is designed and manufactured not to exceed the emission limits for exposure to radio frequency (RF) energy set by the Federal Communications Commission of the United States, Industry Canada of Canada.

During SAR testing, this device was set to transmit at its highest certified power level in all tested frequency bands, and placed in positions that simulate RF exposure in usage against the head with no separation, and near the body with the separation of 10 mm. Although the SAR is determined at the highest certified power level, the actual SAR level of the device while operating can be well below the maximum value. This is because the phone is designed to operate at multiple power levels so as to use only the power required to reach the network. In general, the closer you are to a wireless base station antenna, the lower the power output.

The exposure standard for wireless devices employing a unit of measurement is known as the Specific Absorption Rate, or SAR. The SAR limit set by the FCC is 1.6W/kg, and 1.6W/kg by Industry Canada.

This device is complied with SAR for general population /uncontrolled

exposure limits in ANSI/IEEE C95.1-1992 and Canada RSS 102, and had been tested in accordance with the measurement methods and procedures specified in OET Bulletin 65 Supplement C, and Canada RSS 102. This device has been tested, and meets the FCC, IC RF exposure guidelines when tested with the device directly contacted to the body.

The FCC has granted an Equipment Authorization for this model phone with all reported SAR levels evaluated as in compliance with the FCC RF exposure guidelines. SAR information on this model phone is on file with the FCC and can be found under the Display Grant section of [www.fcc.gov/oet/ea/fccid](http://www.fcc.gov/oet/ea/fccid) after searching on FCC ID: YHLBLUSTUDIO50.

For this device, the highest reported SAR value for usage against the head is 0.62 W/kg, for usage near the body is 1.37W/kg.

While there may be differences between the SAR levels of various phones and at various positions, they all meet the government requirements.

SAR compliance for body-worn operation is based on a separation distance of 10 mm between the unit and the human body. Carry this device at least 10 mm away from your body to ensure RF exposure level



compliant or lower to the reported level. To support body-worn operation, choose the belt clips or holsters, which do not contain metallic components, to maintain a separation of 10 mm between this device and your body.

RF exposure compliance with any body-worn accessory, which contains metal, was not tested and certified, and use such body-worn accessory should be avoided.