

# **STUDIO 7.0 II**

**USER MANUAL**

## Table of Contents

<b>Safety Information</b> .....	<b>4</b>
<b>Appearance and Key Function</b> .....	<b>7</b>
<b>Introduction</b> .....	<b>9</b>
<b>Call Functions</b> .....	<b>12</b>
<b>Getting Started</b> .....	<b>13</b>
<b>Personalize your Home screen</b> .....	<b>14</b>
<b>Contacts</b> .....	<b>14</b>
<b>Messaging</b> .....	<b>17</b>

<b>Connectivity</b> .....	<b>19</b>
<b>Browser</b> .....	<b>21</b>
<b>Gmail</b> .....	<b>23</b>
<b>Play Store</b> .....	<b>24</b>
<b>Gallery</b> .....	<b>26</b>
<b>Music</b> .....	<b>27</b>
<b>FM Radio</b> .....	<b>28</b>
<b>Calendar</b> .....	<b>30</b>
<b>Alarm Clock</b> .....	<b>31</b>

## Safety Information

Please carefully read the terms below:

### Use Safely

Do not use the phone in situations where it might cause danger.

### Transportation Safety

Please observe all transportation laws and regulations.

Please drive with both hands on the wheel.

**PLEASE DRIVE RESPONSIBLY - DO NOT TEXT AND DRIVE**

### Hospital Safety

Please follow hospital rules and limitations.

Please turn off your mobile phone when near medical instruments.

### Airport Safety

Remember to follow all airport and flight safety regulations.

Please do not use your phone during flight.

### **Chemical Warning**

Do not use your mobile phone around fuels or chemicals.

### **Temperature Warning**

Do not subject your phone to extreme temperature conditions.

### **Water Hazard**

Your phone is not waterproof. Keep it away from water and liquids.

### **Emergency Calls**

Make sure your mobile phone is switched on and in a service area. In home screen, click the phone key and dial the emergency number.

### **Accessories and Batteries**

Use only Blu authorized batteries and accessories.

### **Information Backup**

Remember to keep a written record of all important information.

### **Battery Safety and Precautions**

- For better performance and longer battery life, it is recommended that you charge the battery fully before using the mobile phone for the first time.
- The optimum performance of a new battery is typically achieved after two or three complete charge cycles.

**Note:** Keep in mind that continuous overcharging will affect long term battery life.

- While charging, keep the mobile phone out the reach of children.
- Store the battery in a cool and dry place away from direct sunlight and water.
- Do not expose batteries to extreme temperatures (below -8°C (18°F) or above 43°C (110°F).
- Immediately stop using the battery if it produces an odor, cracks and leaks, overheats, distorts or has any other type of physical damage.
- Avoid using the charger near or around liquids. If the charger comes in contact with water or any liquids, immediately unplug it from the outlet to reduce the risk of overheating, charger malfunction, electric shock or fire.

**Warning:** Please be careful with the disposal of used batteries. Do not throw away batteries with daily waste. Please follow local environmental laws and guidelines for proper waste disposal.

### **Cleaning and Maintenance**

- Avoid using the handset and accessories in excessively moist areas to avoid malfunction.
- Use a soft, dry cloth to clean the handset, battery and charger.
- Do not use alcohol, thinner, benzene or any other solvent to clean the handset.

## Appearance and Key Function







# Introduction

## Installation of the SIM Card

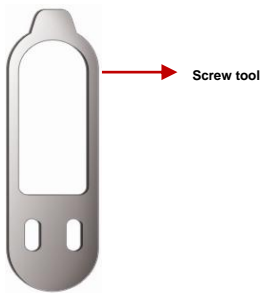
---

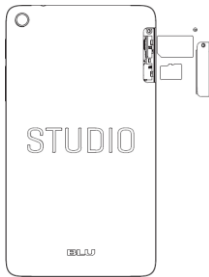
**Warning:** Please keep the SIM card out of the reach of children. The SIM card and its contact are easily damaged due to scratching or bending. Please use caution when carrying, installing or taking out the SIM card.

**NB:** The phone uses a Standard SIM card. Please make sure to obtain one directly from your mobile phone service provider.

### **To insert SIM card:**

1. Use screw tool open the card slot cover.
2. Insert the SIM card.
3. Insert the SD card. (For additional storage capacity).
4. Replace the card slot cover, and power on phone.





### **Power On and Off**

**On** - Please ensure the SIM card has been properly inserted into the phone. Long press the Power key to switch the phone on.

**Off** - In standby mode, long press on Power key until an options menu appears. Select Power off.

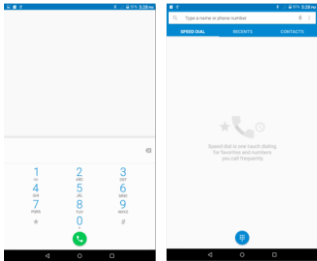
### **Lock Screen**

You may set a password to the lock screen setting as security measure for the phone. For further

information regarding password locks, please enter to the lock screen option in system settings and select on in the password option.

## Call Functions

At the dial keyboard, enter the phone number and then click the dial key.



## **Call Logs**

---

Every telephone number called and received will be saved in the phone's call log. When the number appears on the list, click it to view more info. The number can be dialed by clicking CALL BACK. Click DETAILED to view details. To clear the call logs, press the delete icon on the top right corner.

## **Proximity Sensor**

---

The proximity sensor determines how far away an object is from the device. During the call or when you place the phone close to the ear, the backlight will turn off automatically which conserves battery and prevents inadvertent touching.

# **Getting Started**

## **Signing In**

---

Sign in with a Google account to download apps, back up contacts and more. You can sign in when you set up your phone or you can sign in at any time afterwards.

### **To sign in after you've already set up your phone**

1. In the Main menu list, click Settings, and then click Accounts.
2. Click Add account > Google.
3. If you already have a Google account, input directly. If you don't have a Google account yet, click Create one.
4. Follow the instructions to sign in with or create your account.

# Personalize your Home screen

## **Add**

---

Long press the blank area from home screen, you can add Widgets, Wallpapers and System settings. Or touch the Main menu icon, touch and hold an application or a widget to activate the Move mode, and drag the item to any Home screen as you prefer.

## **Reposition**

---

Touch and hold the item to be repositioned to activate the Move mode, drag the item to the desired position and then release. You can move items both on the Home screen and the Favorite tray. Hold the icon on the left or right edge of the screen to drag the item to another Home screen.

## **Remove**

---

Touch and hold the item to be removed to activate the Move mode, select remove icon.

# Contacts

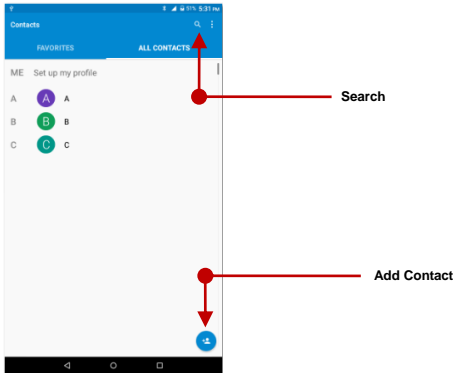
**Enter:** Select Main menu, then select Contacts.

- The default display is the phone contacts and SIM card contacts.
- The contacts are organized alphabetically by default.

**Contacts** –Click a name to edit, call or chat.

**Groups** – Select the option icon on top right corner, then click Groups. Get to your Groups and create new

ones from here.



- Click the Search icon to enter the contact search interface
- Any numbers or letters associated with any of the contacts saved in the list will be shown in the search results.

## Add New Contact

---

- Click the add contact icon (+) to add contact.

- You may enter different contact details which include adding a picture, name, number, address, and email among other options.



The screenshot shows the 'Add new contact' interface. At the top, there's a blue header with a checkmark and the text 'Add new contact'. Below this, there's a dropdown menu for 'Tablet' with a person icon. The 'Name' field is highlighted with a blue underline. Below it is 'Add organization'. The 'PHONE' section has a 'Phone' field with a 'MOBILE' dropdown. The 'EMAIL' section has an 'Email' field with a 'HOME' dropdown. The 'ADDRESS' section includes 'Street', 'PO box', 'Neighborhood', 'City', 'State', 'ZIP code', and 'Country' fields, with a 'WORK' dropdown for the country. At the bottom of the form is a button labeled 'ADD ANOTHER FIELD'.

← Contact information entry field

**Note: Saving your contacts to your Google account facilitates both storage and synchronization with multiple entries across different handsets and tablets. When syncing your Gmail with a new phone, all your stored Google contacts are automatically synced with the new phone.**



## **Delete Contact**

---

- Click on the Contacts icon to enter the phonebook.
- Press the Option icon on the top right corner, then select Delete contact.
- Select the contact you want to delete, click OK to delete.

## **Import Contacts**

---

The phone allows you to import contacts to synchronize information between different storage types that include the SIM card, Google account and your Tablet.

### **To synchronize and import contacts:**

1. Press the Contacts icon to enter the phonebook.
2. Press the Option icon and select import contacts from SIM.
3. Select the source account you want to import the contacts from. Once selected follow the instructions to sign into the account to add the account to your phone and import the accounts contacts.

# **Messaging**

You may use this function to exchange text messages and multimedia messages with your family and friends. The messages to and from the same contact or phone number will be saved into a single conversation so you may see the entire message history conveniently.

## **Send an SMS**

---

Click on the Messaging icon

Click the (+) add recipient icon to enter text message recipient

- Compose Text Message and click to send.

### **Send an MMS**

---

When creating message, the default message style is SMS.

- Click the attachment icon in the messaging interface.
- Click to add attachments and create an MMS message.



# Connectivity

Bluetooth is a short-range wireless communications technology that devices can use to exchange information and connect to different types of devices which include headsets and other devices.

## Power on Bluetooth

---

Settings » Bluetooth and select to power on Bluetooth.

- The Bluetooth icon will appear in the notification bar. The Bluetooth will then start to scan for all devices within its range and will display all available devices in a list.



← List of available Bluetooth devices

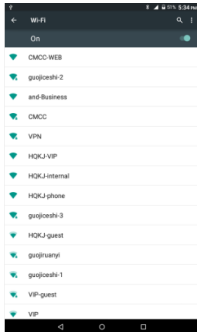
## Power on Wi-Fi

---

Settings » Wi-Fi and select ON to power on Wi-Fi

- Click on the desired Wi-Fi network to be connected.

**Note:** Unsecured networks can be connected to directly - secured networks require a password or credentials prior to connection.



List of available  
networks and the  
network connection  
screen

# Browser

## Menu Functions

---

### Home

Enter into Home site.

### Close

This option will add to favorites

### Save for offline reading

The

### Share Page

This menu option shares the webpage

### Find on Page

This menu option finds texts on the page.

### Request desktop site

This menu option pins to start

### New tab

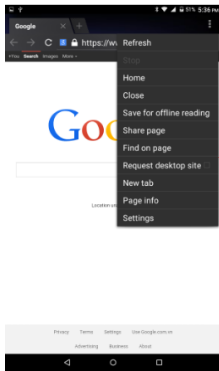
This

### Page info

This menu option displays recent webpage activity.

### Settings

This menu option displays internet explorer settings

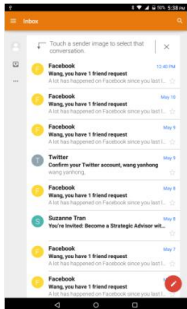


**Click Option icon to access the internet browser options**

# Gmail

Gmail is Google's free email service. To access the Google account, click the applications menu and click on the Gmail icon and either sign in with your existing account or create a new one.

**Note:** In order to keep accounts streamlined with Google services, your Google account user name and password may be used for some Google programs.

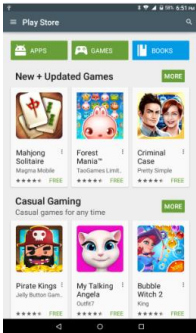


The Gmail inbox is separated in different categories

Scroll Gmail to view different categories.

# Play Store

Play Store allows you to download applications, programs and games directly to your device. Access the Play Store and search the specific category.



Search and select between different Store categories



# Camera

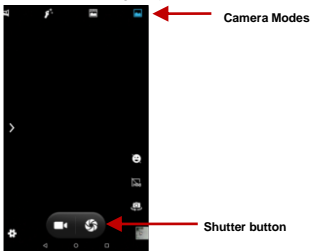
**Prior to use:** Insert SD card before using the camera or video camera. All photos or videos taken by the phone should be stored in the memory card for large storage capacity of images and videos.

Click the Main Menu » Camera

## Take Pictures

Aim at the object that the picture will be taken.

- Press the Shutter button on the screen to capture image.
- After taking the picture, the file will be saved in the default save location.

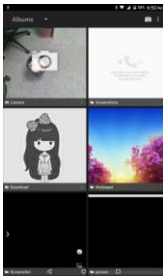


# Gallery

## Open Images

---

Click on the Photos icon



Pictures are stored in separate albums

## Share Pictures

---

You may share pictures by sending them through different types of installed applications. You may also send pictures through the MMS message function by attaching a picture and also via Bluetooth.

## Adjust Image

---

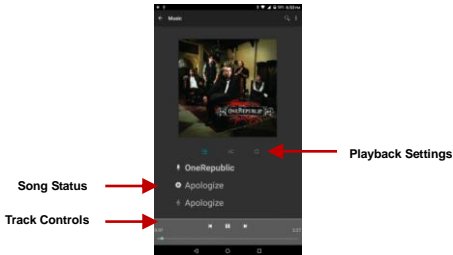
Press Edit icon to adjust images. You may select from different effects that may include: Crop, Rotate, and Fix.

# Music

## Open Music

---

Application Menu » Music



## **Search Music**

---

You may choose to search for music from media folder through artist name, song name, album name among other options.

# **FM Radio**

## **FM Radio**

---

Through this function, you may listen to FM radio on the device. The FM radio uses the wired headphones as an antenna in order to receive signal. Before using this function, connect the original equipment headphones that came with the phone.

## **Open FM radio**

---

Press the FM Radio icon to open the application.

Click to scan FM channels automatically then click to add any of your favorite radio stations.



**Add Favorite  
Radio Stations**

**Scan**

## **FM Radio as Background**

Click on the Back or Home key to move the FM Radio to the background.

# Calendar

The calendar helps keep track of your life's most important moments in one application.



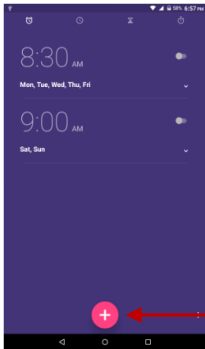
Click the (+) button to enter a new event

Click the calendar button to change views

# Alarm Clock

In settings, click on Alarm to enter the alarm clock settings

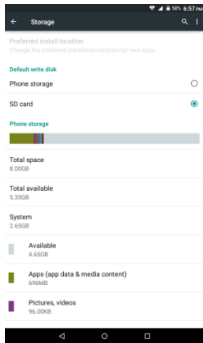
This option allows you to add and edit alarms.



Click to add alarms

# Storage Sense

Storage Sense allows you to organize your default storage settings. You may select between storage on your device or your SD card. You may also configure your storage based on different categories you can choose from which include Music, videos, photos, applications, and new downloads.





# Troubleshooting

Below is a list of common problems that may occur when using your mobile phone. Try these easy troubleshooting steps to resolve any type of issues you may encounter.

## **The phone does not power on**

- Press and hold the power key until the startup sequence appears on the display.
- Check the battery level and ensure there is sufficient charge.

## **The phone powers off by itself**

- Check if the screen lock of the phone is enabled.
- Check if the phone needs to be charged.

## **The battery won't charge**

- Check if the battery is already fully charged.
- Ensure that the battery being used is a BLU approved battery.
- Double check if the charger connector is properly connected to the phone.

**Note:** Connect charger only after the battery has been inserted.

## **The standby time is too short**

- Please keep in mind that standby time relates directly to phone usage (Internet, Text, Voice Calls, Maps, etc.).
- Batteries typically have to be replaced after a year of use.

### **The phone cannot connect to the network (Voice or Data)**

- Verify if you have active service with your service provider.
- Contact your local network service provider and verify if you are within its network coverage area.

### **The phone display a SIM Error**

- Make sure the SIM is properly inserted and in its intended slot.
- Make sure that the SIM card is not damaged or scratched.

### **The PIN code was entered incorrectly three times**

- The SIM card will lock and you will need to enter the PUK code (PIN Unlock Code). Please contact your local service provider to obtain the PUK.

### **I cannot make calls**

- Make sure that the number you dialed is correct and the dial key has been pressed.
- Use the full national area code when dialing out of your area or when abroad, use country-specific international access codes.

### **I cannot receive calls**

- Make sure that your phone is connected to a network.
- Check the phones Call Divert and Call barring settings (Check with your service provider for these settings and codes)

### **The caller ID does not display on incoming calls**

- Contact your local network service provider and verify you have the caller ID feature enabled on your account or verify if the caller may have blocked his number from appearing.

### **The caller cannot leave a voicemail message**

- Contact your local network service provider and verify if the voicemail service is active on your account or check if the network is busy.

### **The phone does not connect to the internet**

- Ensure with your service provider that your account has the appropriate internet/data plan enabled.
- Ensure internet APN settings are configured (Carrier dependent).

### **Text Messages cannot be Sent / Received**

- Ensure text messaging is enabled with your service provider.
- Ensure text APN settings are configured (Carrier dependent).

The information provided in this user manual is subject to change without notice and BLU Products reserves the right to modify the manual at any given time. BLU Products has made every effort to ensure that this user manual is accurate and disclaims responsibility and liability for any inaccuracies or omissions.

**Note:** Some software, user interface, or components may vary depending on final version.

## **Regulatory Information**

---

### **FCC Regulations:**

This device complies with part 15 of the FCC Rules. Operation is subject to the following two conditions: (1) This device may not cause harmful interference, and (2) this device must accept any interference received, including interference that may cause undesired operation.

This device has been tested and found to comply with the limits for a Class B digital device, pursuant to Part 15 of the FCC Rules. These limits are designed to provide reasonable protection against harmful interference in a residential installation. This equipment generates, uses and can radiated radio frequency energy and, if not installed and used in accordance with the instructions, may cause harmful interference to radio communications. However, there is no guarantee that interference will not occur in a particular installation. If this equipment does cause harmful interference to radio or television reception, which can be determined by turning the equipment off and on, the user is encouraged to try to correct the interference by

one or more of the following measures:

- Reorient or relocate the receiving antenna.

- Increase the separation between the equipment and receiver.

- Connect the equipment into an outlet on a circuit different from that to which the receiver is connected.

- Consult the dealer or an experienced radio/TV technician for help.

Caution: Changes or modifications not expressly approved by the party responsible for compliance could void the user's authority to operate the equipment.

## FCC RF Exposure Information (SAR)

This device is designed and manufactured not to exceed the emission limits for exposure to radio frequency (RF) energy set by the Federal Communications Commission of the United States.

During SAR testing, this device is set to transmit at its highest certified power level in all tested frequency bands, and placed in positions that simulate RF exposure in usage against the head and near the body. Although the SAR is determined at the highest certified power level, the actual SAR level of the while operating can be well below the maximum value. This is because the device is designed to operate at multiple power levels so as to use only the power required to reach the network. In general, the closer you are to a wireless base station antenna, the lower the power output.

The exposure standard for wireless employs a unit of measurement known as the Specific Absorption Rate, or SAR. The SAR limit set by the FCC is 1.6W/kg.

The FCC has granted an Equipment Authorization for this model device with all reported SAR levels evaluated as in compliance with the FCC RF exposure guidelines. SAR information on this model device is on file with the FCC and can be found under the Display Grant section of [www.fcc.gov/oet/ea/fccid](http://www.fcc.gov/oet/ea/fccid) after searching on FCC ID: YHLBLUSTUDIO7II.

For this device, the highest reported SAR value for usage against the head is 0.44 W/kg, for usage near the body is 1.18 W/kg.

While there may be differences between the SAR levels of various devices and at various positions, they all meet the government requirement.

#### IC Notice

This device complies with Industry Canada license-exempt RSS standard(s). Operation is subject to the following two conditions:

- (1) this device may not cause interference, and
- (2) this device must accept any interference, including interference that may cause undesired operation of the device.

Le présent appareil est conforme aux CNR d'Industrie Canada applicables aux appareils radio exempts de licence. L'exploitation est autorisée aux deux conditions suivantes:

- (1) l'appareil ne doit pas produire de brouillage, et
- (2) l'utilisateur de l'appareil doit accepter tout brouillage radioélectrique subi, même si le brouillage est susceptible d'en

This Class B digital apparatus complies with Canadian ICES-003.

Cet appareil numérique de la classe B est conforme à la norme NMB-003 du Canada.

### IC Radiation Exposure Statement

This EUT is compliance with SAR for general population/uncontrolled exposure limits in IC RSS-102 and had been tested in accordance with the measurement methods and procedures specified in IEEE 1528 and IEC 62209. This device and its antenna(s) must not be co-located or operating in conjunction with any other antenna or transmitter.

Cet appareil est conforme aux limites d'exposition DAS incontrôlée pour la population générale de la norme CNR-102 d'Industrie Canada et a été testé en conformité avec les méthodes de mesure et procédures spécifiées dans IEEE 1528 et IEC 62209. Cet appareil et sa ou ses antennes ne doivent pas être co-localisés ou fonctionner en conjonction avec tout autre antenne ou transmetteur.

### **Additional Information**

---

The information provided in this user manual is subject to change without notice and BLU Products reserves the right to modify the manual at any given time. BLU Products has made every effort to ensure that this user manual is accurate and disclaims responsibility and liability for any inaccuracies or omissions. BLU Products makes no commitment to keep current the user manuals, however, does reserve the right to



make improvements to the user manual at any given time without notice.