

pidion

[www.mypidion.com](http://www.mypidion.com)

- Please read the following warnings before using the product.
- Shapes and colors of the images shown in this manual may differ from the actual products.
- Contents of the manuals may differ based on the software version of products or conditions of the wireless provider.

## BM-150R Series Manual



This manual is protected by Copyright Laws.

This manual has been produced by Bluebird Soft Inc. Please note that there may be editorial mistakes or possible omission of information.

Programs embedded in the product are legally protected. Unauthorized copying, transferring, or deletion is strictly prohibited.

There may be a few operational problems caused by the application environment, application program, or other surrounding machinery.

This product generates, uses and can radiate radio frequency energy and if not installed and used in accordance with the instructions, it may cause harmful interference to radio communications. Service related to human security is not provided as there may be a possibility of confusion in the electric waves of the product.

### Registered Trademark



PIDION is a Leading Brand in the mobile industry. Bluebird Soft Inc. is a trusted global company which represents high technology and is currently registered worldwide with its PIDION trademark legally protected by law.

### Information to the User



**Changes or modifications not expressly approved by the manufacturer could void the user's authority to operate the equipment.**

This equipment has been tested and found to comply with the limits for a Class B digital device, pursuant to part 15 of the FCC Rules. These limits are designed to provide reasonable protection against harmful interference in a residential installation. This equipment generates, uses and can radiate radio frequency energy and, if not installed and used in accordance with the instructions, may cause harmful interference to radio communications. However, there is no guarantee that interference will not occur in a particular installation.

If this equipment does cause harmful interference to radio or television reception, which can be determined by turning the equipment off and on, the user is encouraged to try to correct the interference by one more of the following measures:

Reorient or relocate the receiving antenna.

Increase the separation between the equipment and receiver.

Connect the equipment into an outlet on a circuit different from that to which the receiver is connected.

Consult the dealer or an experienced radio/TV technician for help.

## Knowing the product

### FCC RF EXPOSURE INFORMATION

*WARNING! Read this information before using your phone*

In August 1996 the Federal Communications Commission (FCC) of the United States with its action in Report and Order FCC 96-326 adopted an updated safety standard for human exposure to radio frequency (RF) electromagnetic energy emitted by FCC regulated transmitters. Those guidelines are consistent with the safety standard previously set by both U.S. and international standards bodies. The design of this phone complies with the FCC guidelines and these international standards.

**CAUTION** : Use only the supplied or an approved antenna. Unauthorized antennas, modifications, or attachments could impair call quality, damage the phone, or result in violation of FCC regulations. Do not use the phone with a damaged antenna. If a damaged antenna comes into contact with the skin, a minor burn may result. Please contact your local dealer for replacement antenna.

#### **Body-worn Operation**

This device was tested for typical body-worn operations with the back of the phone kept 1.5 cm. from the body.

SAR compliance for body-worn operation is restricted to belt-chips, holsters or similar accessories that have no metallic component in the assembly.

The SAR limit of USA (FCC) is 1.6 W/kg averaged over one gram of tissue.

BM-150R Device(FCC ID: SS4BM150R) has also been tested against this SAR limit. The highest SAR value reported under this standard during product certification for use at the ear 0.724 W/kg and when properly worn on the body is 1.27 W/kg.

#### **WARNING**

Any changes or modification not expressly approved by the party responsible could void the users' authority to operate the device.

## Declaration of Conformity

I hereby declare that the product.

<b>Model</b>	BM-150R
<b>Type</b>	PDA

Satisfies all the technical regulations applicable to the product within the scope of Council Directives 99/5/EC, 89/336/EEC, and 73/23/EEC:

<b>Radio</b>	ETSI EN 301 511 / ETSI EN 300 328
<b>EMC</b>	ETSI EN 301 489-1/7/17, EN 55022, EN 55024
<b>Safety</b>	EN 60950-1
<b>Health</b>	Council Rec. 99/519/EC

All essential radio test suites have been carried out.

**NOTIFIED BODY :** EMCert Dr.Rasek  
– Address  
Boelwiese 5, 91320 Ebermannstadt, Germany,  
Identification Number: 0678

**MANUFACTURER or AUTHORISED REPRESENTATIVE :**

– Address:  
Bluebird Soft., Inc.  
558-5, Sinsa-dong, Kangnam-gu, Seoul, Korea

This declaration is issued under the sole responsibility of the manufacturer and, if applicable, his authorized representative.

**POINT OF CONTRACT:**

<b>Company</b>	Bluebird Soft., Inc.
<b>Phone number</b>	+82-2-548-0740
<b>Fax number</b>	+82-2-548-0870

CE 0678

## Table of Contents

### I. Getting Started

- 1. Activating Your Phone ..... 4
- 2. Synchronize with ActiveSync ..... 5

### II. Understanding Your Phone

- 1. Features of Your Phone ..... 6
- 2. What's in the box? ..... 7
- 3. Closed View of Your Phone ..... 8
- 4. Install/Remove the Battery ..... 9
- 5. MiniSD Memory Card ..... 9
- 6. Battery & LED status ..... 10

### III. Learning the Basics

- 1. Powering On/Off the Phone ..... 11
- 2. Resetting Your Phone ..... 11
- 3. Starting your PDA ..... 12
- 4. Using the Stylus ..... 12
- 5. Entering Text ..... 13

### IV. Call Functions

- 1. Turning the Phone  
Functions On/Off ..... 15
- 2. Phone Program ..... 16
- 3. Calling and Receiving ..... 17
- 4. Contacts ..... 18

### V. Camera

- Using the Camera ..... 19

### VI. DMB

- 1. Opening & Closing ..... 20
- 2. Screen Configuration ..... 21
- 3. Operation Guide ..... 22
- 4. Capture Screen ..... 23
- 5. Setting ..... 24

### VII. Changing Your Settings

- 1. Personal Tab ..... 25
- 2. System Tab ..... 27
- 3. Connections Tab ..... 30

### VIII. Information

- 1. Safety Information ..... 33
- 2. Troubleshooting ..... 34
- 3. Customer Service ..... 35
- 4. Service Center Information ..... 36

- Certification of Quality ..... 38

- Authenticity of Facts ..... 39

## I. Getting Started

### 1. Activating Your Phone



#### [Remove the Battery]

1. Push down using both thumbs to remove battery cover.



2. Raise the battery by using the groove on the lower part to remove the battery.



#### [Insert the SIM Card]

Insert the SIM card with its gold contacts face down. Its cut off corner should match the cut off corner in the slot.



#### [Remove the SIM Card]

To remove the SIM card, lightly slide it away from slot.



#### [Install the Battery]

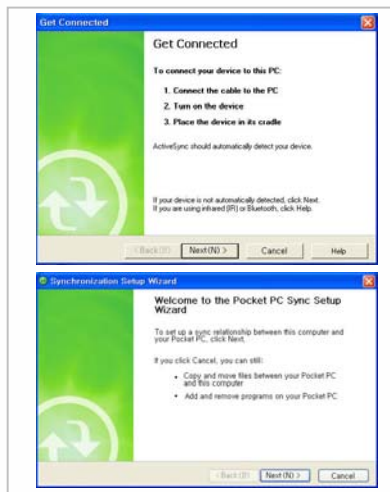
1. Put the battery in line with the left part of the PDA and then push the right part to lock.  
2. Put the projected part of the cover on top of the groove in the back and then push carefully with both thumbs.



The plug-in SIM card and its contacts can be easily damaged by scratches or bending. Use caution when inserting or removing the card and keep all SIM cards out of reach of children.

## I. Getting Started

### 2. Synchronize with ActiveSync



#### 1. Installing Microsoft ActiveSync on Your PC

Install the Microsoft ActiveSync from the supplied Getting Started CD.

You can also download the latest version of ActiveSync from the Microsoft website.

#### 2. Connecting the PDA to Your PC

After installation connect the PDA to the PC according to the following instructions:

- ① Connect the cable to the PC
- ② Turn on the PDA
- ③ Connect the cable to the PDA

If connected properly, the wizard for the setup synchronization will start.

(If the connecting cable is moving or loose, it may cause an automatic stop of the Active Sync or re-synchronization. Please re-connect the cable again.)

#### 3. Setting up a Partner Relationship

- Standard Partner Relationship: Proceed according to the explanation of the wizard for setting up synchronization.
  - Besides standard functions, data such as favourites, address, schedule, work, and incoming mail will all be synchronized with the latest information maintained.
  - Guest Partner Relationship : Choose 'Cancel' while proceeding with Wizard to set up synchronization.
- Fundamental functions such as copying or transferring of data in between the PC and PDA, program installation, and so forth may be used.



This is based on Microsoft ActiveSync 4.2 English Version. If you use a different version, it may differ from the instructions of the manual.

You may download the most recent version from the Microsoft website in case you lose the CD bundle.

## II. Understanding Your Phone

### 1. Features of Your Phone

Division	Specification
GSM	Quad Band (850/900/1800/1900 MHz) GPRS Multislot Class 12, Class B
CDMA	Single Band (Cellular, KPCS Band) CDMA 1x, EVDO
WLAN	Frequency: 2,402MHz ~ 2,480MHz Number of channels: 13 Antenna power: 10mW and less Modulation type: G1D, D2D Used certified module (SWL-2560S)
Bluetooth	Frequency: 2,402MHz ~ 2,480MHz Number of channels: 79 Antenna power: 0.01mW and less Modulation type: F1D

The FCC ID SS4BM150R can only support GSM.

The GPRS/EDGE and WLAN can not be operated simultaneously .

Division	Specification
CPU	Intel PXA270 520MHz
OS	Windows Mobile 5.0
Memory	RAM: 64MB, ROM: 512MB
Display	Select from the following. 3.5" QVGA 240x320 Touch Screen 3.5" VGA 480x640 Touch Screen
Communication	Select from the following. GSM & WLAN(802.11b/g), CDMA 1x & WLAN(802.11b/g), CDMA 1x-EVDO & WLAN(802.11b/g)
Bluetooth	Bluetooth 1.2 Class 2
DMB	T-DMB
Slot	MiniSD
USB	1.1 Client / Host
Camera	1.3M Pixel
Battery	1,230mAh Li-on
Dimension	72(W) x 134(L) x 18.5(T) mm
Interface	IrDA Port, 24Pin Port
Operation Temperature	4° to 122° F/-20° to 50° C
Environment	1.2m concrete drop



## II. Understanding Your Phone

### 2. What's in the box?



[Main Body]



[Stylus Pen]



[Standard Battery]



[USB Cable]



[Earphones]



[Adaptor]



Thank you for purchasing a PIDION Product. Please make sure all the above components are included.

The pictures and photos in this manual may slightly differ due to model compositions.

(When purchasing extra accessories please go to your nearest dealer.)

## II. Understanding Your Phone

### 3. Closed View of Your Phone



## II. Understanding Your Phone

### 4. Install/Remove the Battery



#### [Install the Battery]

1. Put the battery in line with the left part of the PDA and then push the right part to lock.



2. Put the projected part of the cover on top of the groove in the back and then push carefully with both thumbs.



#### [Remove the Battery]

1. Push down using both thumbs to remove the cover.  
2. Raise the battery by using the groove on the lower part to remove the battery.

### 5. MiniSD Memory Card



Make sure that the gold plate terminal of the memory card is pointed towards the back when inserting into the MiniSD slot. For removal push the exposed part of the memory card. It will pop out.

- Frequent insertion/removal of the memory card, or applying too much force to it, may cause the product to malfunction.
- Important data should always be saved on the computer. The company will not take any responsibility for the loss of data on this product.
- Card removal and turning the power off/on using the memory card may result in loss of data or cause the memory card and PDA to malfunction.
- If the memory card cannot be removed easily, instead of removing it with force, inquire to the service center for its removal, or ask for an exchange or refund of the product.



We strongly recommend that you use the adapter which was purchased with the product for charging the battery. However, the 24 pin charger of an ordinary mobile phone may also be used to charge the PDA battery. (Due to the characteristics of a standard charger, there may be small discharge of electricity despite the charger being fully charged.)

## II. Understanding Your Phone

### 6. Battery & LED status

#### [ Hours for Charging & Use ]

Charge on a connection from the USB	Approximately 4 hours
Charge on a connection to the Adapter	Approximately 2 hours
Maximum hours of use when charged	Standby: 15 hours Phone call: 5 hours 30 minutes

#### [ Battery Charge LED ]

While Charging	After Charging
Orange	Green

#### [ Radio Function LED ]

Division	WLAN	Bluetooth	DMB	Phone
In Use	Blue	Blue	Blue	Amber
Standby	-	-	-	Blinking Slowly
Searching		-	-	Blinking Quickly

#### [ Safety Notice for Using the Battery ]

- Batteries are expendable products and with regular use over time they will lose their ability to fully charge.
- The battery may overheat from its application environment.
- If the fully charged battery lasts only half the time from its originally purchased state, you should purchase a new battery. (Batteries have a 6 month period guarantee.)
- The time that a battery may last may differ according to the lighting of the monitor, temperature, length of its use, etc.
- Battery exhaustion may be considerably faster in areas where Bluetooth, wireless Internet, or phones cannot be used. (Bluetooth, wireless Internet, and phone functions should be turned off when these functions are not in use. This will help save the battery.)
- Leaving the battery on the re-charger after it has been recharged, will not damage the battery.
- If the cables to the main body are not properly connected, the lights on the main body may not come on during the recharging process. Always check and make sure that all cables are connected properly.
- Do not remove the battery while it is in use. This may result in damage of data and the PDA may be initialized.
- If the battery is not sufficiently charged, the PDA may turn off while in use. Always check and make sure that the battery your using has been sufficiently charged.



If the battery is running low on power, a warning notice may appear on the monitor with a warning sound.  
Charging and usage hours may differ from that of the manual, according to the user's application environment.  
New batteries are not charged, therefore you must fully charge the battery before use.

### III. Learning the Basics

#### 1. Powering On/Off the Phone



The power button is located on the right side of the product.

The power button should be pressed shortly.

If the power button is pushed for more than 3 seconds, the LCD Back Light will turn On/Off.

Even when the power is turned off, if the GSM modem is turned on the PDA will also power on automatically so you can answer the phone.

Remove Battery Cover



#### 2. Resetting Your Phone

##### <Soft Reset>

##### Exemplary Situations

When memory conversion is not processed smoothly due to long hours of program use, or when there is an unexpected error resulting in a clash between programs, and so forth. (This function is equivalent to rebooting the PC)

##### Process Method

Press the reset button located at the back of the body using the Stylus Pen.

##### ⚠ Safety Precautions

All unsaved files will be lost and programs currently in use will be shut down when the screen is initialized.

##### <Hard Reset>

##### Send Key + OK Key + Reset Button

##### ⚠ Safety Precautions

All data will be lost and all programs will be initialized as they were when first purchased. Please note that all addresses, schedules, and information saved in the memory of the PDA will be lost when processing hard reset.

### III. Learning the Basics

#### 3. Starting your PDA



1. Turn the PDA power on.
2. Windows Mobile Logo will appear.
3. Touch the cross mark on the screen and follow it.
4. Proceed by following the instructions on the screen.
5. After finishing the setting, the 'today' screen will appear.



If the cross mark is not accurately pressed, the same screen may appear repeatedly.  
Please use only the Stylus Pen and refrain from using pins or sharp objects.  
(Using sharp objects may cause damage to the LCD monitor.)

#### 4. Using the Stylus

The provided Stylus pen may be used to directly process a program and input information on the touch screen.

##### Pressing

This means using the Stylus pen by pressing it one time to open, close, or cancel something.  
(This is equivalent to pushing the right button of the mouse when using the computer.)

##### Dragging

Upon choosing an item, you can select the area of the item from the list by using the Stylus pen.  
(This is equivalent to mouse drag when using the computer)

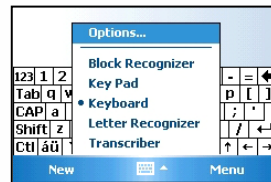
##### Pressing for a While/Few Seconds

If you want to see extra functions of the chosen item(s), push the Stylus pen for a few seconds to see the pop-up menu screen.  
(This is equivalent to clicking the right button on the mouse when using the computer.)

### III. Learning the Basics

#### 5. Entering Text

##### [ Selecting Text Input Mode ]

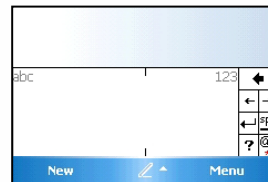


There are five different character input methods available.

They are:

1. Block Recognizer
2. Built-in Numeric Keypad
3. Keyboard
4. Letter Recognizer
5. Transcriber

##### [ Block Recognizer ]



This input method uses the traditional writing area box split in the middle.

The left side is used to write letters and the right side is for number entry.

Symbols and common functions are located in other smaller boxes located in the right of the writing box area.

##### [ Built-in Numeric Keypad ]

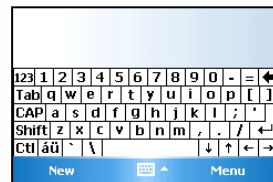


Using Keypad, you can type letters, punctuation, numbers, and other Special characters into text entry fields or other applications available on your PDA.

### III. Learning the Basics

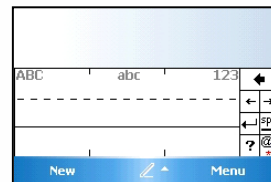
#### 5. Entering Text

##### [ Keyboard ]



This input method displays an on-screen keyboard that can be used to input characters by tapping the screen using the stylus pen.

##### [ Letter Recognizer ]



This option allows you to enter text using your own handwriting.

The screen is divided into three different areas. A capital letter area, small letter area, and a number area.

Characters are entered by printing letters in each area. The character is then analyzed and typed on the screen automatically.

##### [ Transcriber ]



The transcriber option is similar to the letter recognizer, except instead of entering characters into a designated area, you can enter entire words and sentences using your own handwriting.

Transcriber supports both printing and cursive writing styles and then automatically types the information on the screen.



## IV. Using the Phone

### 1. Turning the Phone Functions On/Off

#### [ Using the Key ]



End Key

If the end key is pushed for more than 3 seconds, the Phone Functions will turn On/Off.

#### [ Using Wireless Manager ]



Touch this part or select **[Wireless Manager]** from **[Start]→[Settings]→[Connections]** tabs

Touch this part to turn On/Off.



Please refrain from using the phone while driving or walking. This is very dangerous and may be illegal in your country.

## IV. Using the Phone

### 2. Phone Program

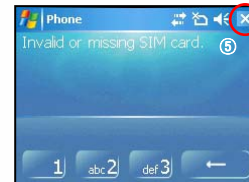
[ Key ]



[ 'Today' screen ]



[ 'Phone' Screen ]



#### Method of Operation

- ① Press **Send Key** on the PDA.
- ② Press **Left Soft Key**
- ③ Touch [**Phone**] on the lower part of the 'Today' screen.

#### Exit Method

- ④ Press **End Key** on the PDA.
- ⑤ Touch the [**X**] button on the upper right part of the 'phone' screen.



Please refrain from using the phone while driving or walking. This is very dangerous and may be illegal in your country.

## IV. Using the Phone

### 3. Calling and Receiving



#### Calling

1. Call the number by using the PDA keypad input screen, and then press Send Key.
2. Push the **[Talk]** button by using the keypad on the screen.

#### Receiving

1. Press Send Key on the PDA.
2. Touch the **[Answer]** button on the lower left part of the screen.

#### Refuse Calls

- Touch the **[Ignore]** button on the lower right part of the screen to refuse a call. (Pressing the volume controller on the left side of the PDA will only mute the bell.)

#### Finishing the Call

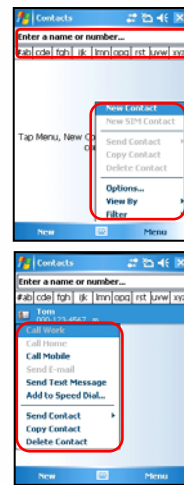
1. Press End Key on the PDA.
2. Touch the **[Finish]** button appearing on the phone screen.



Please refrain from using the phone while driving or walking. This is very dangerous and may be illegal in your country.

## IV. Using the Phone

### 4. Contacts



#### Using Contacts

- ① Contacts may be searched by inputting the name/number or by touching the tab button.
- ② Contacts Menu
  - New Contact : Register new contact
  - Copy/Delete Contact : The chosen contact will be copied/deleted.
  - View By : Contacts will be indicated according to name/company.
  - Filter : Filter mode can be inputted to show only relevant items.
- ③ Various options can be used by touching the contact for a few seconds.
  - Calling a company/home/mobile number: Calls will be made to the enlisted numbers.
  - Sending E-mails: E-mails may be sent to the enlisted e-mail address.
  - Sending Text Messages : Text messages may be sent to the enlisted numbers.

#### Registration of New Contacts

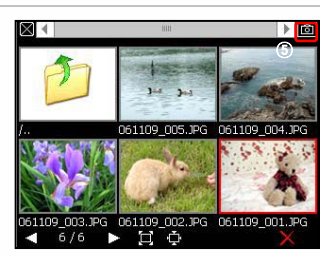
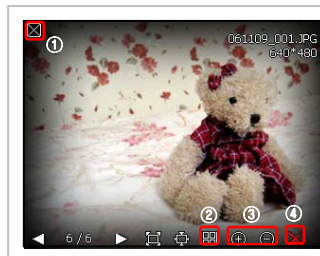
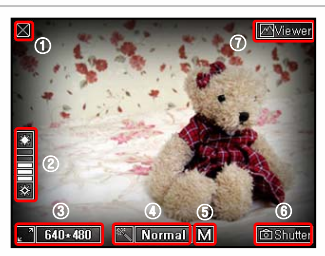
1. Register new contacts by touching [New Contact].
2. Input the name and occupation into the appropriate office columns.



Please refrain from using the phone while driving or walking. This is very dangerous and may be illegal in your country.

## V. Camera

### Using the Camera



Press either the Camera Key on the right side of the product, or launch **[Start]→[Programs]→[Camera]**


#### Set Screen

- ① Close Camera Program
- ② Adjust Brightness
- ③ Set Resolutions: 320\*240~1280\*960
- ④ Special Effects: Normal, Gray, Sepia, Negative
- ⑤ Image Quality Setup : High, Medium, Low
- ⑥ Photograph
- ⑦ Photo Album

Press the viewer button on the upper right hand corner of the screen.

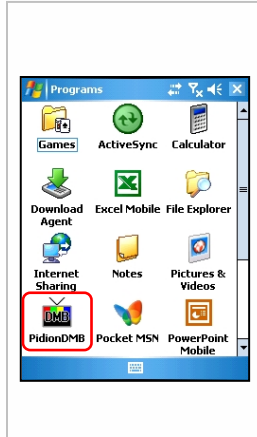
#### Set Screen

- ① Close the Photo Album
- ② Brief View
- ③ Zoom In/Zoom Out
- ④ Delete
- ⑤ Move to camera mode

 **If the battery does not have enough power, the camera might automatically turn off or may not start. It will automatically power off if it is not used for more than 1 minute. The camera will automatically exit when operating the DMB. The Camera and DMB cannot be processed simultaneously.**

## VI. DMB

### 1. Opening & Closing



You can watch and listen to terrestrial DMB and radio.

#### How to open

[Start]→[Program]→[PidionDMB]

#### How to close

1. Closing the program is identical to the process for other programs.

- (Press the "X" button at the upper right corner of the program window.)
2. The program closes when the "OK" button of the keypad is pressed.

Fully extend the antenna for reception when viewing terrestrial DMB broadcasts, and when not viewing, collapse and insert the antenna within the main unit.



If executing other programs while running the DMB program, normal program operation is not guaranteed.

Avoid DMB viewing while performing activities such as driving or walking, as doing so can be dangerous.

Applying excessive force to the antenna can result in its damage. If opening the camera during DMB operation, the DMB broadcast automatically ends, as simultaneous running of the camera and DMB function is not possible.

## VI. DMB

### 2. Screen Configuration

[ Vertical Mode ]



[ Horizontal Mode ]



Upper Display Area

DMB Status Display

Control Menu Display



If executing other programs while running the DMB program, normal program operation is not guaranteed.  
Avoid DMB viewing while performing activities such as driving or walking, as doing so can be dangerous.  
Applying excessive force to the antenna can result in its damage.

## VI. DMB

### 3. Operation Guide



When opening the DMB program, the message "The player is being closed due to initialization failure. Check the player installation file again and retry." may appear. In such cases, the DMB program can be used normally once again, after removing any unnecessary programs that may have been installed in the screen on the same day. Such problems can result due to limitations of Microsoft Windows Mobile 5.0, and thus, maintaining a non-excessive quantity of installed programs is recommended.



Icon	Name	Description
	Left/Right	Change channels.
	Up/Down	Adjust volume.
	Toggle	Set screen size.
	Setting	Set DMB options.
	Capture	Save screen shots.
	Full Screen	Enlarge screen size to full.
	TV Mode	Switch from Radio Mode to TV Mode.
	Radio Mode	Switch from TV Mode to Radio Mode.
	Mute	Mute volume regardless of level.
	Volume Bar	Adjust volume.

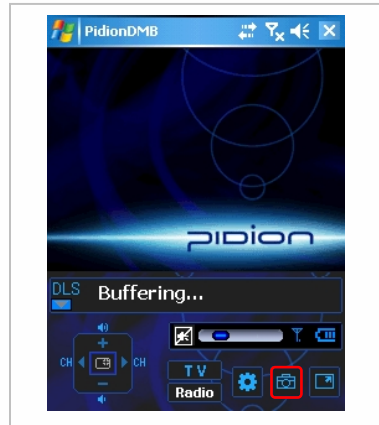


If executing other programs while running the DMB program, normal program operation is not guaranteed. Avoid DMB viewing while performing activities such as driving or walking, as doing so can be dangerous. Applying excessive force to the antenna can result in its damage.




## VI. DMB

### 4. Capture Screen

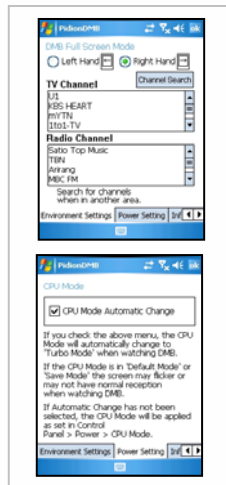


Division	Description
Capture Type	Press the capture icon.
Folder to save	Within the My Documents folder.
File Attributes	File Name: Date and time of capture
	File Extension: JPEG
	Capture Size: 320 x 240

 If executing other programs while running the DMB program, normal program operation is not guaranteed.  
Avoid DMB viewing while performing activities such as driving or walking, as doing so can be dangerous.  
Applying excessive force to the antenna can result in its damage.

## VI. DMB

### 5. Setting



Screen	Name	Description
DMB Full Screen Mode <input type="radio"/> Left Hand <input checked="" type="radio"/> Right Hand	Full Screen Mode	Set orientation to left hand or right hand in full screen mode.
<input type="button" value="Channel Search"/>	DMB TV/Radio Channel Search	Perform an automatic search of the current region for TV/radio channels that can be added.
<b>TV Channel</b> J1 KBS HEART MYTN Ito1-TV <b>Radio Channel</b> Satio Top Music TEN Arirang MBC FM	DMB TV/Radio Channel List	Lists divided by TV and radio channels that are results of a channel search; double-click any entry to view.
<input checked="" type="checkbox"/> CPU Mode Automatic Change	CPU Mode Automatic Change	When checked, the turbo mode is engaged automatically when viewing DMB broadcasts to facilitate smooth viewing.



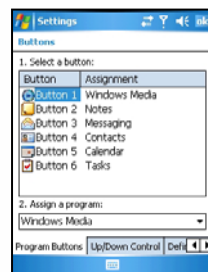
**If executing other programs while running the DMB program, normal program operation is not guaranteed.**  
**Channel searching times can be prolonged in areas that do not receive DMB broadcasting or in locations where reception is weak.**  
**In addition, the reception of DMB broadcasting may be impossible in areas where radio waves are blocked, such as basements and interiors of certain buildings.**

## VII. Changing Your Settings

### 1. Personal Tab



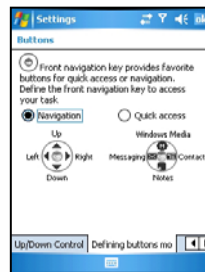
#### [ Buttons ]



[Start] → [Settings] → [Personal] → [Buttons]

**Method of changing the shortcut key allocation program:** Choose the button that you want to set up, then choose the program you need from the allocation program below.

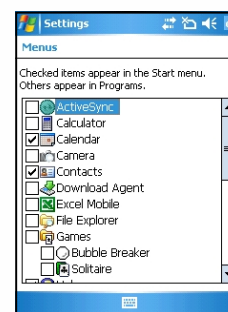
**Programs you can choose:** Aside from the basic programs, you can institute personally installed programs.



**Defining Buttons mode:** Front navigation key provides favorite buttons for quick access or navigation.



#### [ Menu ]



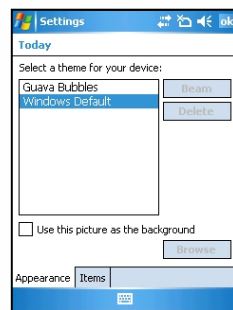
[Start] → [Settings] → [Personal] → [Menu]

Programs that can be used will appear on the check list. The checked icon will appear on the title bar of the start menu. (You may check up to 7 items.)

This is used for setting up the start menu of the title bar.

## VII. Changing Your Settings

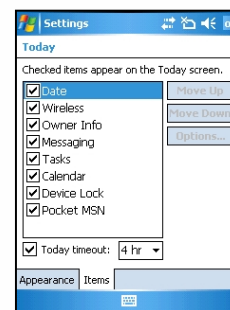
### 1. Personal Tab



You may choose the skin and the surrounding screen according to your taste.

[Start] → [Settings]  
→ [Personal] → [Today]

The skin file (\*.TSK) will appear on the background image setup after it has been printed into 'My Documents'.



Choose the categories that appear on the [today]screen.

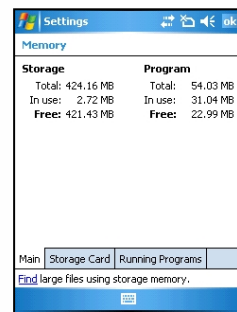
[Start] → [Setting]  
→ [Personal] → [Today]

It will appear on the 'Today' screen according to the order that it appeared on the screen. This order may be changed by moving it up or down.

## VII. Changing Your Settings

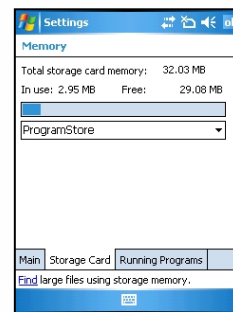
### 2. System Tab

#### [ Memory ]

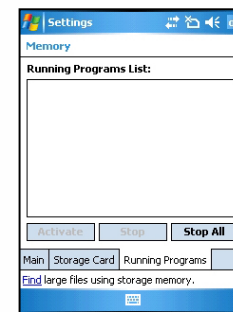


[Start]→[Settings]  
→[System]→[Memory]

This shows the current status of the memory (the memory used and remaining).



This indicates the present condition of the Program Store (Used Capacity, Remaining Capacity), and the Mini SD memory card that is inserted into the PDA.

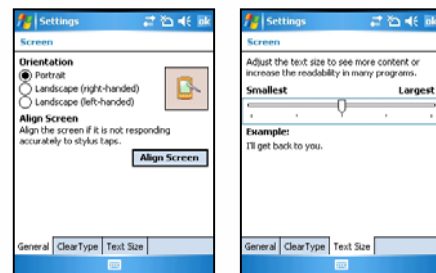


This indicates the current operating program lists, so you may choose to stop all or part of the programs.

## VII. Changing Your Settings

### 2. System Tab

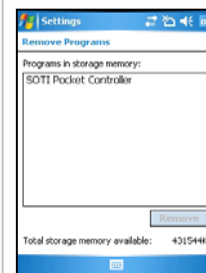
#### [ Screen ]



[Start]→[Settings]→[System]→[Screen]

The screen may be converted to portrait or landscape (right-handed, left-handed). You may readjust the stylus point by pressing the **[Align Screen]**. The text size that appears on the screen may be adjusted in 5 stages.

#### [ Remove Programs ]



This indicates the list of programs installed personally or by a group.

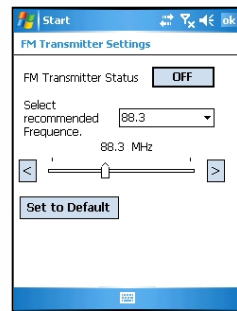
[Start]→[Settings]  
→[System]→[Remove Programs]

Choose the program that needs to be deleted from the list and press **[Remove]** for an automatic deletion.

## VII. Changing Your Settings

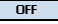
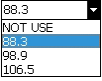
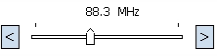

### 2. System Tab

#### [FM Transmitter]



[Start]→[Settings]  
→[System]→[FM Transmitter]

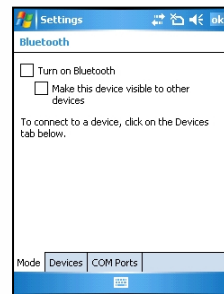
The FM Transmitter can be used to listen to music files in a PDA via a car stereo.

Screen	Name	Description
	Power On/Off	When power is on: ON When power is off: OFF
	Recommended frequency Selection	88.3 / 98.9 / 106.5 MHz Select from 3 recommended frequencies. (Select "NOT USE" if none of the 3 recommended frequencies are to be used.)
	Frequency Selection	Use the left/right buttons to select a frequency within the range of 88 ~ 108 MHz.
	Initialization	Return to default settings.

## VII. Changing Your Settings

### 3. Connections Tab

#### [ Bluetooth ]



Setup for the communication of Bluetooth equipment.

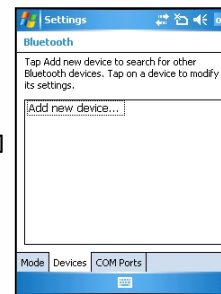
[Start]→[Settings]  
→[Connections]→[Bluetooth]

Turn on Bluetooth : Setup as Use/Non-use.

(The removal of this function when not in use may prolong the life of the battery.)

Make this device visible to other devices :

This enables the search of BM-500 from other devices.



It scans the surrounding Bluetooth device and conducts pairing.

#### Bluetooth Setup Method

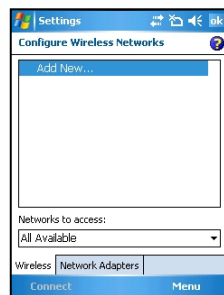
1. On touching the [Add new device...], it will scan the surrounding Bluetooth device.
2. Select the device to connect and press [Next].
3. Input the pass key to setup for a secured connection and then choose [Next].  
(Check the relevant device manuals, as the pass key for each device is different.)
4. Check the indicated name and see whether the connecting operation is correct. Then select [End].
5. The process has been successfully completed when the model no. and icon of the product appears on the screen.

 The pairing method may be different for each Bluetooth device. Please check the manual.



## VII. Changing Your Settings

### 3. Connections Tab



Set Up Wireless LAN through Wi-Fi.

[Start]→[Settings]  
→[Connections]→[Wi-Fi]

Wireless LAN Setup sets up the network card environment which connects it to the surrounding AP through the setting up of the wireless LAN.

#### Set Up Method for Wireless LAN

1. If you turn on Wi-Fi from Wireless Manager, it will search the AP within the vicinity and show it on the screen.

2. Choose the AP from the wireless network list indicated and press [Connect].

– If the AP information cannot be received please set it up manually.

1. Touch [Add New...] from the Configure Wireless Networks window.

2. Input the AP name of [Network name]. Then check the AP setup content.

3. Press [Finish].

4. The AP name will appear on the screen list.

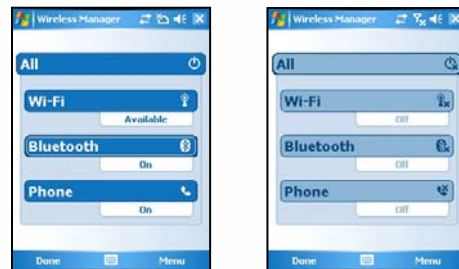
5. The process will be completed by pressing [Connect].

## VII. Changing Your Settings

### 3. Connections Tab



#### [ Wireless Manager ]

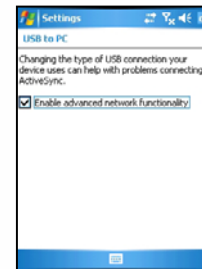


[Start]→[Settings]→[Connections]→[Wireless Manager]

By touching [All], you may start 3 functions at the same time. [Wi-Fi], [Bluetooth], [Phone] may be turned on or off separately. When turning on these functions, a detailed setup is possible through the [Settings] that appears on the lower part of the screen. Also, turning off the [Menu] button on the lower right of the screen may be used to set up individual settings.



#### [ USB-PC Connect ]



You may set up the sync environment with the PC.

[Start]→[Settings]

→[Connections]→[USB to PC]

If you decide to uncheck [Enable advanced network functionality], the PC will not synchronize.

If ActiveSync does not synchronize after a right connection to the PC, please recheck the checking status.

## VIII. Information



Please abide by these instructions as they will ensure safe and proper use of the product.

### 1. Safety Information

#### 1. Safety Instructions for Recharging Batteries

- If the main body of the product or the battery has been submerged under water, do not attempt to dry it by heater or microwave. (Wet PDA or battery changes the label color. Malfunction with colored label can not be serviced under warranty service.)
- Please make sure objects such as necklaces or rings are not placed near the battery connection terminal (the metal plate parts) which may transfer electricity to it.
- When using a battery after it has not been used for a long period of time, you should leave it in room temperature after fully recharging it. Extended periods of not using the battery will affect its capacity and durability.
- Even if the battery has been recharged, its possible hours of use may shorten due to the lowering of electric voltage.
- Please use only the instructed type of battery and adapter. Do not use any products of the PDA for any other purpose other than those specified in the users manual.  
(If these instructions are not followed, it might result in an explosion of the product and may shorten the lifespan of the battery, PDA, or adapter.)

#### 2. Safety Warnings for Use of the Phone

- Using the phone while driving (bicycles, automobiles, motorcycles, etc.), walking, climbing, and so forth is strictly prohibited.

#### 3. Other Instructions

- Data may be damaged due to careless use of the customer or during the process of repair. It is vital that such data is separately kept, as the company will not take any responsibility for damages of these accounts.
- Upon malfunctions, do not reconstruct or dismantle the product. Immediately send these components to the Customer Service Center.
- Please turn off the power in explosive areas (in planes or hospitals) as there may be danger due to electronic wave problems.
- Please stop using the PDA and consult a medical expert in case of any allergic reactions to the product.
- Please do not dye or paint any part of the PDA. This may damage the product.
- High temperatures or high humidity may damage the product.
- The screen may be damaged if sharp objects such as pins, nails or pens are used instead of the Stylus Pen.
- Please avoid vibrations or shocks. When not in use, please place in a safe spot after unplugging the power cable.
- Place the adapter in a firm position so it will not move. If smoke or an irregular sound comes from the PDA, immediately turn it off, unplug it, and separate the adapter plug. Also remove the adapter plug in case of thunder and lightning.
- There will be no service offered relating to human security, as there may be a possibility of confusion in the electric waves of the product.

## VIII. Information

### 2. Troubleshooting

Q : What should I do if the PDA gets wet?

A : First, remove the battery from the PDA and lay it out to dry. If it does not operate properly after being dried, then the main board or other components may need to be exchanged. Please visit your nearest customer service center.

Q : The PDA Power does not come on.

A : Recharge for a certain amount of time and check it again. If it still does not power on, please visit your nearest customer service center for advice.

Q : The PDA does not recharge.

A : Check whether the adapter of the PDA and PC has been connected properly and wipe the charge terminal if needed. If it still does not operate properly, please visit your nearest customer service center for advice.

Q : Calling and receiving calls are not smooth and the connection is frequently cut short while talking on the phone.

A : The electronic wave condition might be unstable. Move to a different area and try again.

Q : Voice reverberates while talking on the phone.

A : Adjust the volume or try again after moving to a different area.

Q : The PDA has been over heated.

A : Such conditions may arise due to long hours of using the phone, game, or internet. However, this will not effect the functions of the product.

Q : The battery life span seems to have shortened.

A : Batteries are expendable products. Each time you use it the life span of each new recharge will slowly become shorter and shorter till it is no longer capable of being recharged anymore.

## VIII. Information

For any enquires of problems or inconveniences while using the product please call +82-2-1588-1380.

### 3. Customer Service

#### [Before Requesting After-Sales Service]

- Please backup all the data in your PDA before requesting customer service.
- We do not backup products registered at the customers service center. Therefore, we are not responsible for any damage or loss of data.

#### [Bluebird Soft Customer Service]

- Phone : +82-2-1588-1380
- Fax : +82-2-548-0870
- E-Mail : [gcs@bluebird.co.kr](mailto:gcs@bluebird.co.kr)
- Address : Customers Service Center 2<sup>nd</sup> Floor,  
558-8, Sinsa-dong Gangnam-gu Seoul, Korea
- < Hours >
- Mon.-Fri. : 9 A.M. ~ 6 P.M. (GMT Time: +9 Hours)
- Sat. : 9 A.M. ~ 2 P.M.
- We are not open on Sundays and National Holidays.

#### [Registering for After-Sales Service]

- According to company rules, registering for customer service requires prepaid postal or delivery service, or visitation.
- If you have purchased the product through any store other than Bluebird Soft, you have to be registered as a user in order to request customer service.
- In order to be registered as a user, call Bluebird Soft Inc. Call center number: +82-2-1588-1380.
- When you register for customer service, you need to attach the purchase receipt with the product.
- If you also post your name, contact number, address, and the problematic symptoms, the product will go through a faster and more efficient examination.
- You can either ask for service from the company you purchased it from, or talk directly to customers service at Bluebird Soft Inc.
- Do not intentionally damage the label on the product.
- Customers may have disadvantages if the label is damaged.
- If you have to return the product to Bluebird Soft Inc., you need to put it in a safely packed box.
- We do not warrant you for the damages incurred during transportation. Please use the original box of the product and bubble wrap it.
- Transport the product safely. Bluebird Soft Inc. is not responsible for any components lost during the transportation.

## VIII. Information

### 4. Service Center Information

#### [ Regulations on Free/Charging Repairs ]

Type of Customer Damage		Contents of Compensation	
		Within the Term of Guarantee	After term of guarantee
When requesting important repairs within 10 days of purchase		Exchange or Repayment	
Requesting important repairs within 1 month since purchase date		Exchange or Repair Free of Charge	
An important repair is needed after 1 month of exchange		Exchange or Repair Free of Charge	
When it is impossible to exchange within 1 month		Repayment	
Possible Repairs	The same problem occurs 3 times	Repair Free of Charge	Charged Repair
	The same problem occurs 4 times	Exchange or Repayment	Charged Repair
	5 problems in all different parts		
Impossible Repairs	When the manufacturer has lost the product in which the customer has requested for a repair	Exchange or Repayment	Exchange after depreciation of the fixed price.
	When it is impossible to repair within 1 month.		
	Impossible to exchange.	Repayment	Exchange after adding 10% to the depreciated price of the fix price (the highest price-purchased price).

Abiding to the Regulations of Customer Damage Repayment, Terms of Component Possession: 3 years

Exchange will be made to the same product. If an exchange for the same product is impossible, then it will be exchanged for a similar product. However, there should be a repayment if the customer does not want an exchange for a similar product. Repayment amount should be the amount written in the receipt. If the price on the receipt is higher than the price, than the usual price will be used as a standard, considering that other incidental expenses had been added to the higher price.

## VIII. Information

### 4. Service Center Information

#### **Charged Service**

1. If it is not a default, it will be charged when requesting for after-sales service.
  - Service request due to inappropriate use of the customer
  - Loss of a PIN number
  - Use of programs that might effect the program (over-clock, forceful changes in the input of the system, personal developments)
2. Default due to a mistake on the part of the customer
  - Default due to inappropriate or careless use of the product (dropping, submersion under water, shock, damage, unreasonable operations, etc).
  - Default due to a repair or unauthorized technician.
  - Default caused intentionally or by carelessness of the customer.
  - Default due to the use of fraudulent parts or components.
3. Other cases
  - Default due to nature (fire, damage due to sea wind, flood damage, etc.).
  - Expendable parts have exhausted there life (batteries, antenna, or other component parts).
4. Regulations of treatment after charged service
  - If the same default occurs on the part that had been repaired within a 2 months(60 days) period, it will be provided with free of charge repair service.

#### **There will be no returning of goods or repayment upon the following situation:**

Removal of the sealing of the product if it had been sealed.

If the product has been damaged due to careless use by the customer or due to a natural disaster (floods, rain, fire, etc.).

Loss of product or other components (CD, diskette, manual, connecting cables, etc).

Damage to the product after 10 days of purchase, the product will either be exchanged or provided with after-sales service (note, returning of goods or repayment is not allowed).

## Certificate of Guarantee

Name of Product	PDA	Name of Model	BM-150R
Date of Purchase		Manufacture Number	
Place of Purchase		Term of Guarantee	1 year from purchase

Thank you for purchasing a product from Bluebird Soft Inc.

If a circumstance arises where you lose a receipt or the certificate of guarantee, then the term of guarantee will be calculated 3 months (certified by the number of the manufacture, a certificate of inspection) after the date of manufacture.

In case of accessories (such as batteries), only those that match the sales list managed by the service center will be eligible for customer service.

A repair or an exchange of batteries that does not match the sales list of the service center due to the carelessness of the customer will be fully charged.

### < Guarantee of the Product >

1. Due to the regulations of the customer damage compensation, Bluebird Soft Inc. (hereafter Bluebird) will guarantee the products as follows:
2. If Bluebird had been notified of the defaults within the term of the guarantee and the extent of guarantee, Bluebird will repair or exchange those products according to the guarantee policies.
3. If Bluebird cannot repair or exchange defaulted products that had been sent within the term of the guarantee, but falls within the coverage of the guarantee policies, Bluebird will compensate for the products.
4. Bluebird does not have any responsibility to repair, exchange, or repay products until the customer returns the defaulted product. The exchanged product will be provided with one that has a quality equal to that of the brand new product.
5. Bluebird will guarantee those products that are from countries in which Bluebird rightfully distributed the guaranteed products.
6. Bluebird products may include parts, composition, accessories, and materials that have the same capability as a brand new product.
7. If it is a software product, guaranteed service will be offered only in cases where the programming commands cannot be launched. Bluebird cannot guarantee that the product will never stop or there will never be an error when using the product.



### Authenticated Facts

Name of Authenticator : Bluebird Soft Inc.  
Name of Product : Wireless product for the wireless data communication system  
Name of Model : BM-150R  
Date of Production : 2007. .  
Manufacturer/Country : Bluebird Soft Inc./ Republic of Korea  
Authenticator Identification : BBS