



# **HM45**

## USER MANUAL

- Before using, please read and follow the user warnings.
- In the manual the component's shape and color can be different from the actual model.
- The information in the manual can vary depending on the software version and your mobile carrier.



## **FCC Compliance Information**

This equipment has been tested and found to comply with the limits for a Class A digital device, pursuant to part 15 of the FCC Rules.

These limits are designed to provide reasonable protection against harmful interference when the equipment is operated in a commercial environment. This equipment generates, uses, and can radiate radio frequency energy and, if not installed and used in accordance with the instruction manual, may cause harmful interference to radio communications. Operation of this equipment in a residential area is likely to cause harmful interference in which case the user will be required to correct the interference at his own expense.

## FCC Compliance Information

This device complies with Part 15 of FCC Rules. Operation is subject to the following two conditions:

- (1) the device may not cause interference, and
- (2) the device must accept any interference, including interference that may cause undesired operation of this device.

For body-worn operation, this device has been tested and meets the FCC RF exposure guidelines when used with an accessory that contains no metal and that positions the handset a minimum of 1.5cm from the user's body.

**NOTE: THE GRANTEE IS NOT RESPONSIBLE FOR ANY CHANGES OR MODIFICATIONS NOT EXPRESSLY APPROVED BY THE PARTY RESPONSIBLE FOR COMPLIANCE. SUCH MODIFICATIONS COULD VOID THE USER'S AUTHORITY TO OPERATE THE EQUIPMENT.**

- This user manual is copyright protected.
- This user manual has been created by the bluebird software co. We have done our best not to create typos, editing errors, and leaving out any information. Please understand if there are any inconveniences.
- This product's program is legally protected. Illegal copying, transmitting, or erasing of the program is prohibited
- This product's partial functions might have problems from the environment, user program, and other machines.
- This wireless equipment cannot service related to safety of human lives due to possible signal interference.

REGISTERED



PIDION as the future mobile's leading global brand, expresses with reliability, representativeness, and image of advanced technology. It is a registered trademark from the global brand of Bluebird Soft. and is copyright protected.

NOTICE TO USERS

MODEL TYPE	NOTICE TO USERS
Class B Device (Household Information and Communication Device)	This device has qualified the electromagnetic wave suitable registration and can be used as a household device at a residential area as well as any other areas.

※ PLEASE READ THE WARNING SIGNS BEFORE USING THIS PRODUCT.

<b>Notice Before Using the Device</b> -----	<b>2</b>	<b>Connecting ActiveSync</b> -----	<b>19</b>
<b>Precautions Before Using the Battery</b> -----	<b>4</b>	Installing on PC -----	19
<b>About the Product</b> -----	<b>5</b>	Using ActiveSync -----	21
Checking components -----	5	Connecting ActiveSync -----	24
Getting to know your device's each part -----	6	<b>Using the Barcode Reader</b> -----	<b>25</b>
<b>Learning Basics</b> -----	<b>8</b>	Using the Barcodes -----	25
Insert/Remove the battery -----	8	Scanning with Barcodes -----	25
Insert/Remove the USIM card -----	12	Checking Barcodes -----	26
Insert/Remove the MicroSD card -----	13	<b>Device Specifications</b> -----	<b>27</b>
Charging with Cradle -----	16	<b>Q &amp; A</b> -----	<b>28</b>
Turning On -----	17	<b>Service Center</b> -----	<b>29</b>
Soft Reset -----	17	<b>Warranty Certificate</b> -----	<b>31</b>
Hard Reset -----	18		
Using the Stylus Pen -----	18		

## Notice Before Using Device

This information is for your own safety. Please observe the following precautions

- This device is qualified of electromagnetic wave human safety standards. For your own safety please use the authenticated devices only from the head company. If not the case, we cannot guarantee your safety.
- Do not press the power button or the power adapter/ cord when the device is wet. There is a danger of electrical shock.
- Do not remodel, take apart, or repair the device. Please refer to your customer service center. If not the case, you will not be able to get your free repair service.
- Please follow instructions when using the batter.
- Do not use your device at an explosive danger zone.
- In case your device is wet, do not put your device in heaters, microwaves, or etc to dry- there is a risk of explosion or it can be the cause of malfunction. (Please note there is a label in the device that changes color when it gets wet. In this case your will not be able to get your free repair service.)
- Do not use your device on-board an airplane or in hospitals.
- Please backup your device's inner data and information. During the repair or upgrade, there is a slight possibility of your data being erased. (Ring tones, text/voice message, characters will be reset.)

- Please refrain from using your device while driving. If you are in an unavoidable situation, stop your vehicle or use your hand free kit.
- Do not use in places of high temperature and high humidity. The following can be the causes of malfunction: getting wet from the rain, spilling drinks, and taking it in with you at the sauna (high temp.) In these cases, you cannot receive your free repair service.
- Do not place credit cards, phone cards, bankbook, and tickets next to the device. The device's magnetism can damage the listed item's information.
- Please avoid impacts or vibrations. When not using the device unplug the power cord and place it at a safe place where it will not drop.
- Do not place your device at a dusty place. Keep your power cord away from any heating devices. Unplug the power cord when cleaning. If there are any dusts or residue clean the power cords pins thoroughly.
- When not using a battery for long periods, please charge it and leave in at room temperature. Even a charged battery's voltage will decrease over time.
- Do not paint your device. It can damage your screen or your device's exterior. Also, the paint can peel off and trigger allergies. If there is a allergic reaction please seek medical advice.

## Precautions Before Using Battery

These are safety precautions in order to prevent a dangerous accident. Please use the battery correctly and carefully observe the instructions.

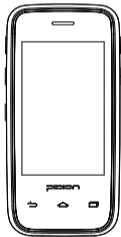
- If the battery is taken apart by impact, applied heat, submersion, or hole-drilling, there is a risk of a dangerous explosion. Please keep away from children and animals.
- Leaving the battery in a hot car or enclosed space where there is direct sunlight, can deform or break down the battery.
- Please take precaution in not letting necklaces, coins and etc touch the battery's terminal (metal part). Do not give an impact on the battery by a sharp object or an animal. There is a risk of explosion.
- Please use only the designated battery for the device. If the original battery is not used, the device's life may decrease and there is a risk of explosion. (In this case you cannot receive the free repair service)
- When charging the battery you must use the supplied standard power adapter. If the original adapter is not used the battery life may decrease and may explode. (In this case you cannot receive the free repair service)



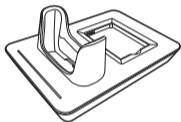
## 1. Checking components

The images in this User's Manual may not reflect the color and shape of the actual product.

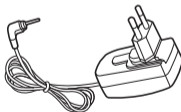
(Please contact the Customer Care Center if you wish to purchase any additional or optional products.)



[ Main set ]



[ Desktop Cradle ]



[ Adaptor ]



[ Battery ]



[ USB cable ]



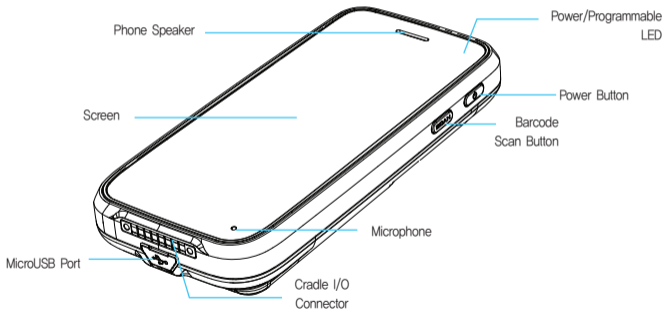
[ Battery Cover ]

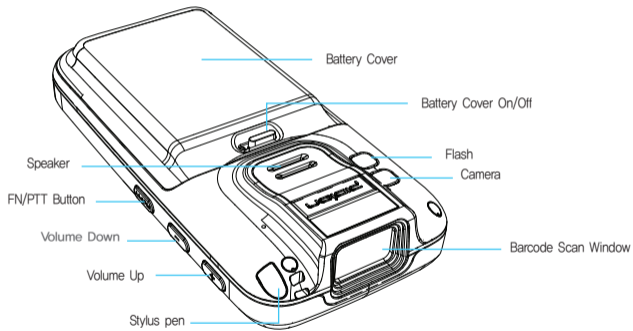


[ Stylus Pen ]

# Getting to know your Device

## 2. Getting to know your device's each part



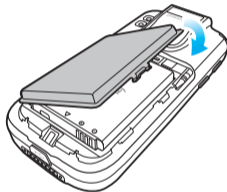


## 1. Insert/Remove the battery

### 1-1. Insert the battery



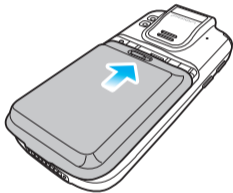
① Push the battery to the direction of the arrow,



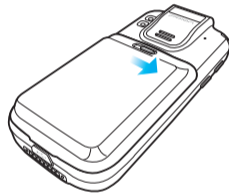
② Push down the battery protect cover to the direction of arrow,



Only use the supplied adapter to charge your battery.



③ Push the battery cover to the direction of the arrow.



④ Lock the battery cover sliding the 'LOCK' to the right.

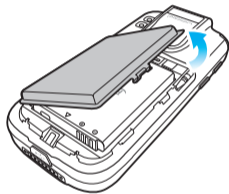
## 1-2. Removing the battery



① Unlock the battery cover sliding the 'LOCK' to the left,



② Slide down the battery cover to remove,



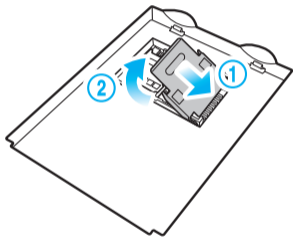
③ Lift up the battery protect cover .



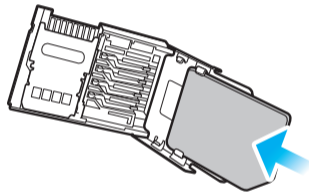
④ Lift up the battery from the top of the battery.

## 2. Insert/Remove the USIM card

### 2-1. Insert the USIM card



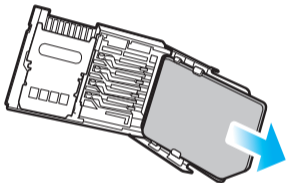
① Push the USIM card holder to (◀ OPEN), direction then lift up.



② Place the USIM card on the holder then push down the holder.



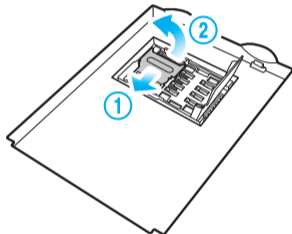
## 2-3. Removing the USIM card



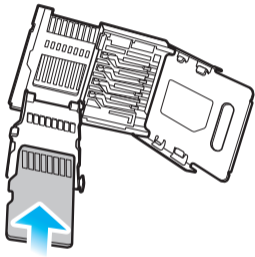
Push the top of the USIM card and slide it out from the holder.

## 3. Insert/Remove the MicroSD Card

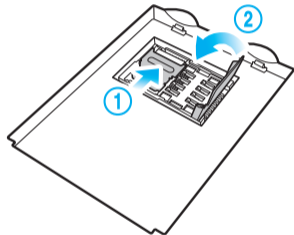
### 3-1. Insert the MicroSD Card



① Open the storage card holder by lifting up the flap.

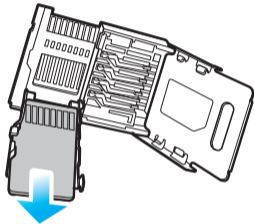


② Insert the microSD card into the storage card holder with its gold contacts facing out.



③ Lock the storage card holder by pushing it down into place.

## 3-2. Remove the MicroSD card

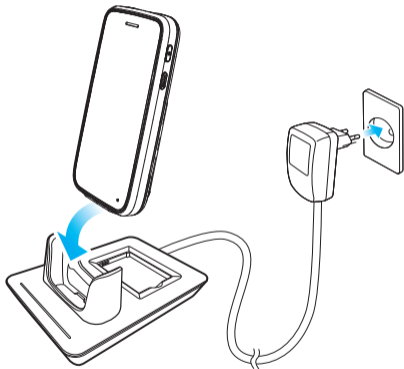


With the USIM card and storage card compartment opened, lift the storage card holder flap to open it,

## 3-3. Precautions using the MicroSD Card

- The SD card can break if you frequently slide in/out or put or excessively put too much force,
- If the card is removed while being used or being turned off, the data can be lost or malfunction,
- Please back up important data. We are not responsible for the lost data,
- If the memory card does not slide out, do not remove by force. After removing the card at the repair center, exchange your device or get a refund,

## 4. Charging with Cradle



As you see in the picture, connect the adapter with the power cable to charge the PDA.

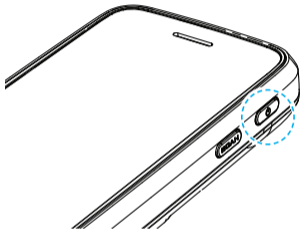
### Power Charging Light

Charging	Orange
Charged	Green



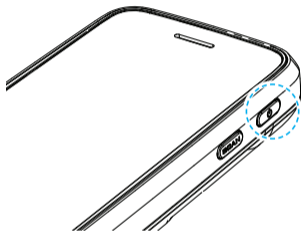
- When the device's battery is low, it may warn you with a ring and a message.
- The charging time can vary depending on the environment. A new battery is only partially charged. Please charge fully before using.

## 5. Turning On



- The **[Power]** button in on the side.
- To turn your device on you must press the shortly.
- After purchasing your device or hard resetting, the booting process can take some time. We apologize for the inconvenience.

## 6. Soft Reset



- Please soft reset if your device freezes or has an unexpected error.
- It is very similar to rebooting your computer. Any information not saved will not be lost.

## 7. Hard Reset

Please refer to the OS.



- Please use this function when your device does not react to the soft reset. It will go back to the factory state.
- When doing the hard reset, everything will be erased. Please do it at your own risk.
- We are not responsible for any information being erased. Before you hard reset, please back up your data.

## 8. Using the stylus Pen

The supplied stylus pen is used to run programs or inputting on the touch screen.



### Pressing

Pressing means to open, run, and cancel any items.

### Pulling

Using the stylus pen you can select multiple items as much as needed. (it is similar to the mouse drag on the PC)

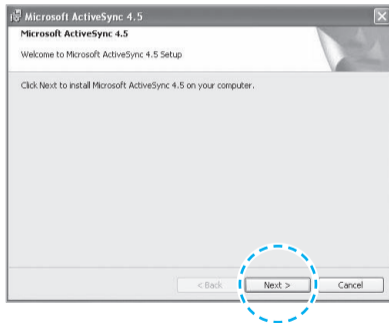
### Holding Down

If you want to see further details of the selected item, hold down on the item and a popup will appear. ( it is similar to the mouse right click on the PC)

## 1. Installing on PC

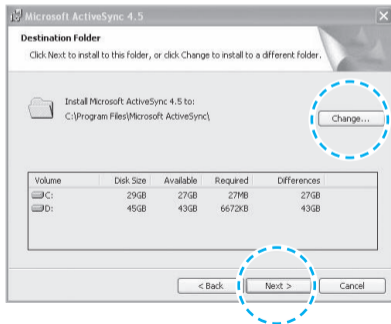
- **[Microsoft ActiveSync 4.5]** version.
- The functions and the layout can be different if you use different version.
- **[Microsoft ActiveSync]** can be updated through the Microsoft Homepage.
- **[Windows Vista]** users need to install **[Windows Mobile Device Center]**.

- ① After connecting to the Microsoft homepage, download and install **[Microsoft ActiveSync]**.

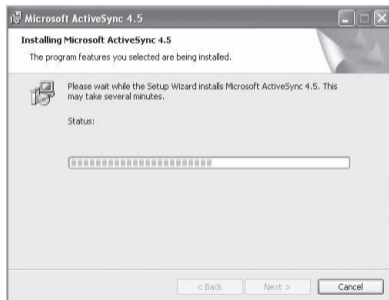


# Connecting ActiveSync

- ② On the window about the license terms, press <I> accept the license terms> ->On the [Client information] window, input <I>User name> ->Specify where you want to install.



- ③ [Microsoft Active Sync] can be installed when it is ready to install.



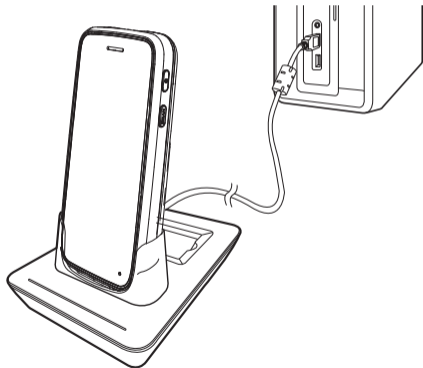
- ④ [Microsoft ActiveSync] is installed.



## 2. Using ActiveSync

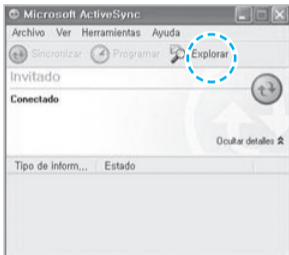
- You can see a Windows Mobile version on the display and it can be different according to the version.
- **[Microsoft ActiveSync]** can be used when the device is plugged into a notebook or pc. You can transfer files by syncing it. You can also install/uninstall new programs.
- The USB cable is sold separately. Please contact the service center for more details. [Code : 12132]

① You can connect with the Cradle.

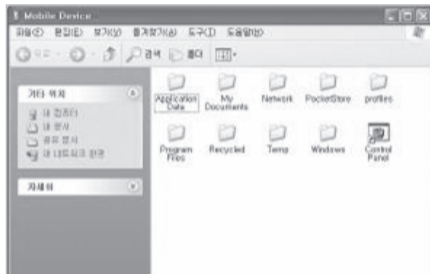


# Connecting ActiveSync

- ② If the device and computer are successfully connected, Microsoft ActiveSync will automatically start. Please select the <Search> button.



- ③ In the <Mobile device> folder, you can check the photos, music, and documents stored in the device and move it to the computer.



## [Precautions using ActiveSync]

- **When "unknown USB device" can pop up**, when the device is turning on while connected to the <Micro USB Cable>. If you reconnect the device from the <Micro USB Cable> the ActiveSync will run properly.
- **If in ActiveSync, the state "connecting..." is continued for a long period of time**, disconnect the device from the <Micro USB Cable>. In [ActiveSync] press FILE ► **CONNECTION SETTINGS** ► Select <Allow USB connection> ► Press [OK]. Reconnect the device.
- **If you have reconnected several times and still "unknown USB device" pops up**  
In certain cases the computer's USB host has gone wrong leading to connection failure.  
Remove the device from the <Micro USB Cable> and reboot the computer. Reconnect the device to the cable and it will run properly.

- **The device not running after removing the battery while device on.**

For this to be avoided, do not remove the battery while the device is on. You must press the [Power] button or the [Shut Down] button with the stylus pen in order for the Windows Mobile to [turn off] correctly.

If in a case where you have removed the battery while the device is on, hold the [Reset] button + [OK] button to hard reset.

Please note if you hard reset, all the data in the memory will be erased.

## 3. Connecting ActiveSync

If you select [**Advanced Network Function Use**] you can connect various Surrounding USB devices to your PDA device.

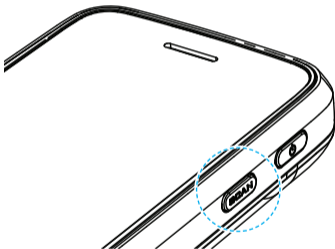
Your device and the surrounding devices can you used when connected with the <**USB Cable**>.



If you use the function [**USB-PC Connect**] your device's battery consumption will be high. If you are not using the function [**USB-PC Connect**] disconnect to save your battery consumption.

## 1. Using the Barcodes

Press the [Barcode Scan] button on the side or front of the device to start scanning barcodes.



## 2. Scanning Barcodes

In order to scan accurately, you must scan with the correct angle 10cm away.



If you are using Barcodes with special programs, please contact the manufacturing company.

## 3. Checking Barcodes



Start ► Memo

The barcode's information will appear if you press the **[Create New]** button in <Memo>.

If you scan a barcode while <Memo> is open, the barcode will be automatically saved in <Memo>.

If you scan when <Memo> is not opened, it will not be saved. To do this, press the **[Menu]** button in **[Create New]** and **[Paste]** to save.

## Physical Characteristics

Dimensions (W x H x D)	64.8 x 134.5 x 18.9 mm / 2.5 x 5.3 x 0.7 inch
Weight	Including standard battery : 195g
Display	3.5-inch widescreen capacitive Touch Display, 800x480 pixels
Keypad	Keys emulated on the TouchScreen 3 Programmable-function keys
Standard Battery	Rechargeable, 3.7V, 1,500mAh, Li-ion
Extended Battery	(optional) Rechargeable, 3.7V, 3,000mAh, Li-ion
Expansion Slot	Customer-accessible MicroSD slot for removable memory cards up to 32G
SIM Slot	1 SIM
Audio	Speaker, MIC Phone with noise cancellation, Bluetooth headset profile
Camera	3M Pixel auto focus with Ultra bright LED flash

## Data Capture

Barcode Scanner	Optional, 1D&PDF417 Laser Class II or 1D&2D CMOS Imager
-----------------	---

## Performance Characteristics

CPU	1GHz
OS	Android
Memory	1GB RAM / 16GB ROM
Interface	USB 2.0 Client via microUSB connector

## User Environment Characteristics

Operating temp	-20°C to 60°C / -4°F to 140°F
Storage Temp	-25°C to 70°C / -13°F to 158°F
Humidity	95% non-condensing
Durability	TankSmith™ Technology, 1.2m/4ft drop per MIL-STD 810G; IP54 Sealing

## Communication options

WWAN Radio	Optional, 3.8G GSM HSPA+/HSUPA or CDMA EVDO Rev. A
WLAN Radio	Optional, IEEE 802.11 a/b/g/n
WPAN Radio	Optional, Bluetooth Class II V2.1

**Q Water went into my device. What do I do?**

**A** First, remove your battery from the device and dry them in a dry place. After drying for a period of time try turning it on. If it still does not turn on, the main-board or other parts needs to be replaced. Please refer to your service center.

**Q It won't turn on.**

**A** The program may be damaged. Please try resetting your device. If it still doesn't work, refer to your service center.

**Q It won't charge.**

**A** Make sure the power cable and your device has been connected correctly. Try cleaning your charging terminals. If it still doesn't work, your battery life might be finished or it can be a broken battery. (The battery warranty is 6 menthes)

**Q How do I get the repair service?**

**A** You can send via a delivery service to the headquarters. When sending the package make sure you pay for the shipping fee in advance. When the repair is finished the headquarters will be covering the shipping fee.

**Q My battery drains very quickly.**

**A** The battery can be drained quickly when the Wi-Fi or Bluetooth is turned on. If it drains quickly regardless of using the options above, please purchase another battery.

- ※ If you have done the above and the device still does not work, please refer to the service center.
- ※ After the 1 year warranty the repair service will be charged.



## Before Requesting After-Sales Service

- Before asking for after-sales service, please back up the data from the terminal.
- We do not back up data from the products received in the Customer Care Center. Therefore, we assume no responsibility for loss/deletion of data.

## Bluebird Soft Customer Service

- FAX : +82-2-548-0870
- E-Mail : mookseven@bluebird.co.kr
- Address : Customers service center, SSang-young IT twintower B 703, Sangdaewon-dong 442-5, Joongwon-gu, Sungnam-si, Keonggi-do, Korea

## Operating hours

- Mon.-Fri. : 9:30 A.M. ~ 6:30 P.M. (GMT Time: +9 Hours)
- The center is closed on Saturdays, Sundays and holidays.

## Registering for After-Sales Service

- We receive the products for after-sales service through mail, delivery service and hand carry only in principle.
- If you bought the product from any party other than the authorized dealer, you need to register the product before asking for after-sales service.
- Please enclose an evidence of purchasing or the receipt to the product for after-sales service.
- Please enclose the name, telephone number, address and symptom for prompt service.
- You can ask for after-sales service through the dealer or the Customer Care Center in the head office.
- Do not intentionally damage the label on the product.
- Damaged label may result in a disadvantage to the customer.
- When you return the product to Bluebird Soft for service, please put the product in a protective box.
- No warranty will not be provided for any damage occurring during delivery. We recommend you to use the box and protective cover supplied with the product.
- Make sure to deliver the product in a safe way. Bluebird Soft assumes no responsibility for loss of the product during delivery.

## Charged Service

1. If it is not a default, it will be charged when requesting for after-sales service.
  - Service request due to inappropriate use of the customer
  - Loss of a PIN number
  - Use of programs that might effect the program (over-clock, forceful changes in the input of the system, personal developments)
2. Default due to a mistake on the part of the customer
  - Default due to inappropriate or careless use of the product (dropping, submersion under water, shock, damage, unreasonable operations, etc).
  - Default due to a repair or unauthorized technician.
  - Default caused intentionally or by carelessness of the customer.
  - Default due to the use of fraudulent parts or components.
3. Other cases
  - Default due to nature (fire, damage due to sea wind, flood damage, etc.).
  - Expendable parts have exhausted there life (batteries, antenna, or other component parts).

4. Regulations of treatment after charged service
  - If the same default occurs on the part that had been repaired within a 2 months(60 days) period, it will be provided with free of charge repair service.

### **There will be no returning of goods or repayment upon the following situation**

- Removal of the sealing of the product if it had been sealed.
- If the product has been damaged due to careless use by the customer or due to a natural disaster (floods, rain, fire, etc.).
- Loss of product or other components (CD, diskette, manual, connecting cables, etc).
- Damage to the product after 10 days of purchase, the product will either be exchanged or provided with after-sales service (note, returning of goods or repayment is not allowed).

Thank you for purchasing a product from Bluebird Soft Inc.

- If a circumstance arises where you lose a receipt or the certificate of guarantee, then the term of guarantee will be calculated 3 months (certified by the number of the manufacture, a certificate of inspection) after the date of manufacture.
- In case of accessories (such as batteries), only those that match the sales list managed by the service center will be eligible for customer service.
- A repair or an exchange of batteries that does not match the sales list of the service center due to the carelessness of the customer will be fully charged.

Name of Product	Handheld Mobile Computer
Name of Model	HM45
Date of Purchase	
Manufacture Number	
Place of Purchase	
Term of Guarantee	1 year from purchase

## Warranty

1. Bluebird Soft Inc. (hereinafter referred to as Bluebird) provides the warranty service for its products in compliance with the regulations on compensation for damage of customer.
2. Upon receiving a notification on a defect of its product within the range of warranty during the warranty period, Bluebird will repair or replace the defective product according to its warranty policy.
3. If the defective product within the range of warranty is not repairable or replaceable, Bluebird shall refund the purchasing price within a designated period from the date of receiving a notice of defect.
4. Bluebird assumes no responsibility for repairing, replacement or refund until it receives the defective product from the customer. The replacement shall be equivalent to a new product in the aspect of performance.
5. Warranty of Bluebird is valid in the countries where the Bluebird products are distributed by Bluebird. (Contract for additional warranty service like field service)
6. Bluebird products may contain the recycled products, components or materials equivalent to new products in the aspect of performance.
7. This warranty is applied to software products only when the programming commands are not executed. Bluebird does not guarantee interruption-free or error-free performance.

# Bluebird

## Customer Service Center

Working hours

Weekdays (9:30am ~ 6:30pm)

Saturdays and Sundays Closed

Phone Number: 1588-1380

Address: Customers service center, SSang-  
young IT twintower B 703, Sangdaewon-dong  
442-5, Joongwon-gu, Sungnam-si, Keonggi-do,

Customer Service Center 1588-1380 we will do our best to satisfy your needs.