



APPENDIX H

: USER'S MANUAL

Smart BLU Manual



BnCOM Co., Ltd.

[Contents]

- **Prior to use**
 - Discover packing**
 - Connect to PC**

- **How to use**
 - Install program**
 - Connect device**
 - Connect bluetooth**
 - Automatic connection**
 - Set the class**
 - Select language**
 - Switch Hot key**

- **Appendix**
 - Specification and characteristic**
 - Useful information**
 - Safety advice**
 - Guide to PL(Product liability)**
 - Guarantee certificate**

Prior to use

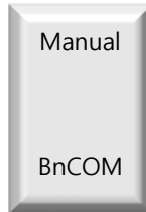
Applying Smart BLU Bluetooth technology PC Connected to a device that is used as a PC product.

[packing content]

Smart BLU (dongle) 1EA



User Manual 1EA



[Connect to PC]

Smart BLU products used with a PC connected to the PC's USB port is used by mounting.

If you are using a USB Hub as a matter of sometimes does not work, so if, PC USB, please use the direct connection to.

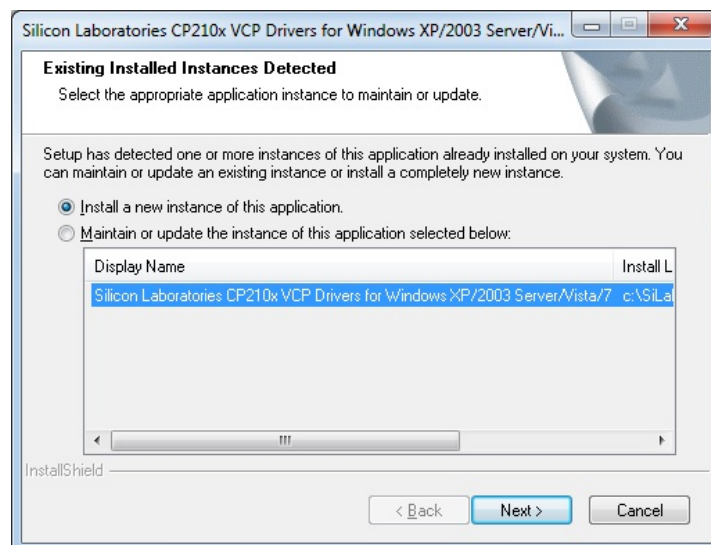
How to use

[How to install program]

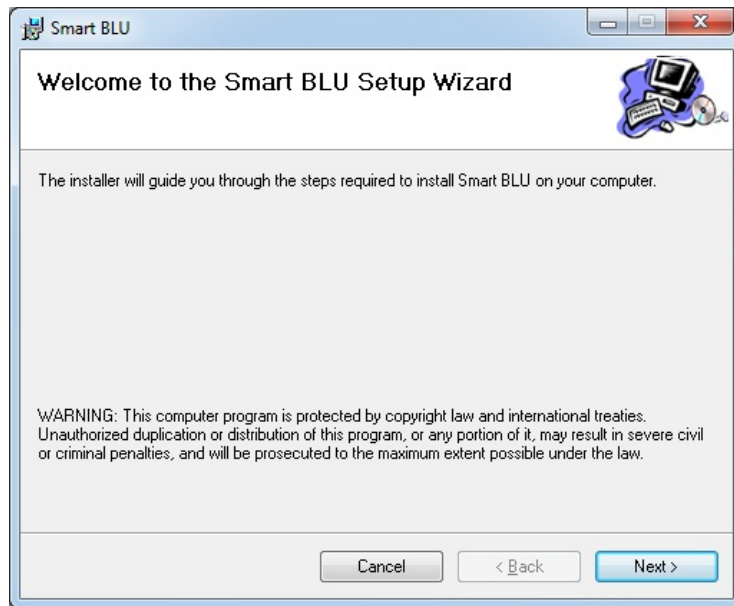
Insert CD into PC as the picture hereunder indicates then the program starts automatically. Some PC may not start program automatically. If so, click install file in CD.



Install program after installing driver first. Push driver and the picture below will show up. Now push "Next" button to install.



Push program button then the picture below will show up.



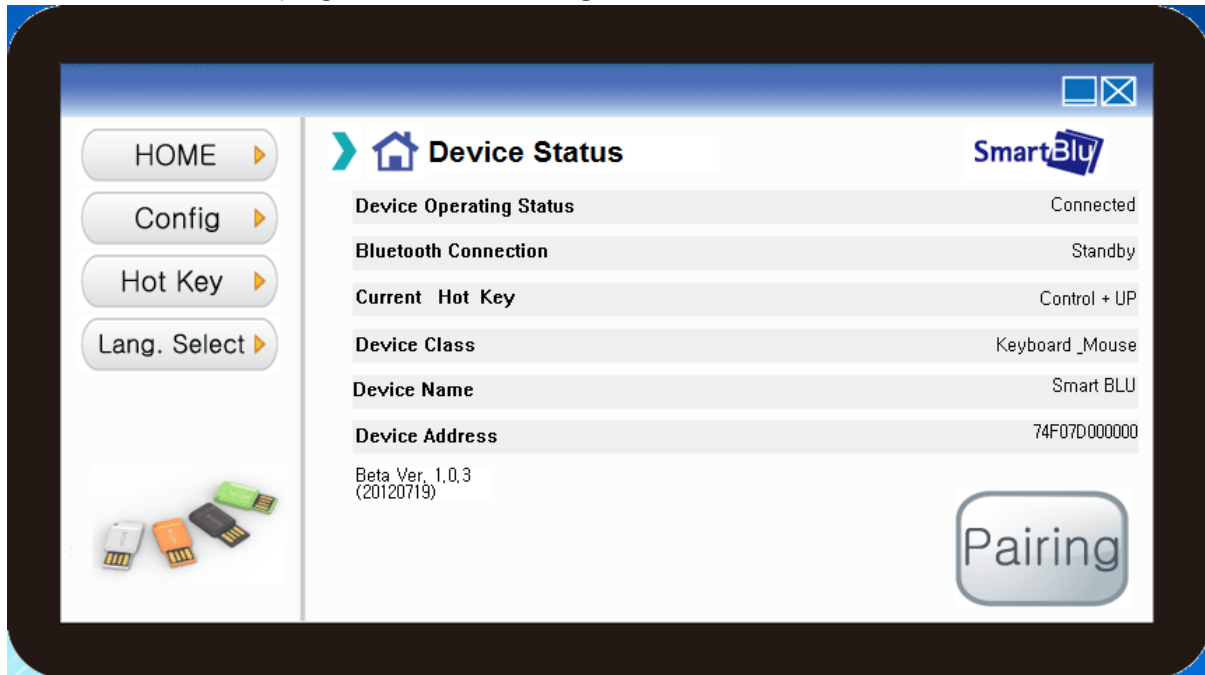
Push "Next" button to install

[Connecting devices]

Icon will appear on the screen upon completion of installation.



Click the icon to start program as follows (Dongle must be connected)



- Device is in operation

Dongle connection will be indicated. If connected properly. "connected" will be indicated. If not connected. "unconnected" will be indicated.

- Connecting bluetooth

Indicate connection to Bluetooth. Unless choosing "automatic connection" dongle will always be on the "waiting" status. In case of waiting for connection "waiting" will be indicated. When connected "connected" sign will show up.

- Current Hot Key

Use for changed control PC and smart

- Choosing a device

User can choose one of the three: keyboard, mouse, or keyboard & mouse.

Choose one of the above that fits to the class of smart device. See manual of the smart device to choose right one.

- Device name

User can change Smart BLU. Smart BLU is named when shipping out from factory.

User may change the name with any name user likes to change.

- Address of the device

Indicated address is MAC Address of Smart BLU

[Specification and characteristics]

Specific Bluetooth	Version 3.0
Support Profile	HID Profile
Frequency range	2.402 ~ 2.480 GHz (79 channel)
Radio range	Up to 10m
Operating temperature	-10 ~ 60 degree
Modulation system	GFSK

[Useful Information]

1. Operating method and available functions varies depending on the species of smart phone.

Refer to the manual of the equipment

2. Smart BLU may not be connected well to smart phones. In such a case, distance between two equipment may be too far to connect, or smart phone may not match to Smart BLU.

3. Smart BLU does not support music streaming of smart phone, multi media, and audio related functions.

4. Radio interference from other equipment may cause malfunction or noise, etc.

Bluetooth may raise radio interference with low power wireless equipment such as any industrial, scientific, medical equipment, microwave oven, wireless lan which use same range of radio frequency, Keep minimum 5m off Bluetooth equipment to avoid radio interference.

5. User environment may cause malfunction or noise. In case user's body disturbs transmission of signal, equipment may malfunction or make noise. In case a part of user's body like a hand touch data sink or transmitting part of smart phones or Smart BLU, user may face malfunction . Depending on the location of Smart BLU such as wall side, corner, partition that blocks radio transmission, Smart BLU may not be connected well.

[safety advice]

- Be careful when connecting to PC
 - . Connect only to USB port of PC
 - . Placing under hot temperature or heating Smart BLU may cause break down or explosion
 - . Keep off from water. Parts or circuit may damage Smart BLU.
 - . Protect Smart BLU from children or pet who may be biting or sucking.
- Use publicly approved equipment
 - . Unless using equipment publicly approved, safety and performance of the equipment will not be guaranteed.
- User should not modify, dismantle or repair by himself
 - . Repair should be done by service center.
 - . Free repairing after-service will not be available in case equipment was modified, dismantled, or repaired before user visit service center.
- Do not operate near microwave oven or wireless lan.
 - . Same range of radio may cause malfunction or damage to performance.

**** As wireless operation of Smart BLU may cause radio interference, do not use for a service that is related to safety of human life.**

[PL(Product liability) for customers]

Type of customer claims		After-service / Compensation	
		Within guarantee period	Alter guarantee period
Troubles in performance and functions while using in normal conditions (within period when parts are available)	Major repair within 10 days from purchasing	Replace with new product or reimbursement	Not applicable
	Major repair within a month from purchasing	Replace with new product	
	Major repair of replaced product within a month	Reimbursement of price	
	Product unable to replace		
	defect	Free repair	
	Defect after repair	Replace or reimburse	
	Defect repeated 4 times		
	Unable to repair		
	Unable to repair in lack of parts		Reimburse 110% of remaining value after depreciation
	Lost by service center of repairable product		
Damage during transportation or installation	replace	Not applicable	
소비자의 고의 및 과실로 인한 고장 발생 시	In case of repairable	Repair with charge	Repair with charge
	In case un-repairable in lack of parts	Replace with new product at repairing price	

[Guarantee certificate]

Smart BLU				
Customer	Name		Tel	
	Address			
Serial No				
Date of purchase			Sales agent address / Tel.	
Year	Month	day		
Guarantee period	1 year form the date of purchasing			

- Terms and conditions for after-service

Customer is entitled to get free after-service for 1 year form the date of purchasing in case of breakdown while using the equipment, However, in case the breakdown happened by mistakes of the customer or by a natural disaster, after-service will be charged to the customer.

Customer should show this guarantee certificate which indicate purchasing date when customer need to get after-service. Keep this certificate without fail.

1. Quality of smart BLU shall be guaranteed as per guaranteed certificate.
2. Put purchasing date on the guarantee certificate to get free after-service for one year.

- Free after-service

1. Free after-service is guaranteed for a breakdown or disorder that happened while using in normal condition during free service period.
2. Guarantee period shall be halved in case of using in heavy duty for business.

- After-service with repairing charge

After-service for the following cases shall be charged to customers even during free-service period:

1. Breakdown due to contamination
2. Breakdown or disorder due to drop down of the equipment.
3. Disorder or deforming caused by thinner, Benzene, other oily solution.
4. Breakdown caused by repairing with parts that are not publicly approved.
5. Breakdown of parts or lost of parts due to dismantle by user.
6. Breakdown by repairing unauthorized person other than engineers from authorized service center.
7. Breakdown by a natural disaster.
8. Breakdown cause by not following "safety advice" in the manual.
9. End of part'life

10. Other case of breakdown caused by mistakes of a user

A/S and technical support

Customer service : 070-8274-8901 (Mon ` Fri 09:00 ~ 18:00)

Address : 4th floor Sumir Bldg 974-5 Dangjeong-dong, Gunpo city, Kyoungki-do

BnCOM Co., Ltd

Communication Commission Interference Statement

This equipment has been tested and found to comply with the limits for a Class B digital device, pursuant to part 15 of the FCC Rules. These limits are designed to provide reasonable protection against harmful interference in a residential installation. This equipment generates, uses and can radiate radio frequency energy and, if not installed and used in accordance with the instructions, may cause harmful interference to radio communications.

However, there is no guarantee that interference will not occur in a particular installation. If this equipment does cause harmful interference to radio or television reception, which can be determined by turning the equipment off and on, the user is encouraged to try to correct the interference by one more of the following measures:

- Reorient or relocate the receiving antenna.
- Increase the separation between the equipment and receiver.
- Connect the equipment into an outlet on a circuit different from that to which the receiver is connected.
- Consult the dealer or an experienced radio/TV technician for help.

WARNING!

Changes or modifications not expressly approved by the manufacturer could void the user's authority to operate the equipment.

Note: The manufacturer is not responsible for any Radio or TV interference caused by unauthorized modifications to this equipment. Such modifications could void the user's authority to operate the equipment.

FCC NOTICE TO USERS

This device complies with Part 15 of the FCC Rules. Operation is subject to the following two conditions: (1) this device may not cause harmful interference, and (2) this device must accept any interference received, including interference that may cause undesired operation.

Any changes or modifications not expressly approved by the party responsible for compliance could void the authority to operate equipment.

IMPORTANT NOTE

According to the KDB447498 (3)(b)(c), The output power is lower than 25 mW for any simultaneous transmitting antenna for which stand-alone SAR evaluation is not required. This equipment complies with FCC radiation exposure. Any change to the antenna or the device could result in the device exceeding the RF exposure requirements and void user's authority to operate the device