

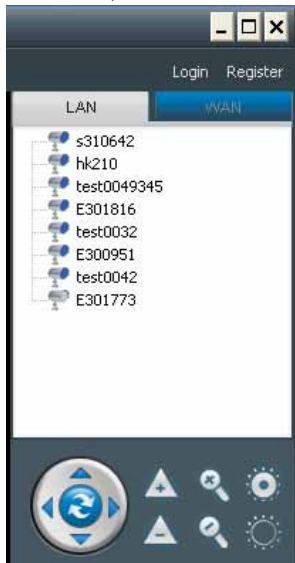
# Plug and Play IP Camera



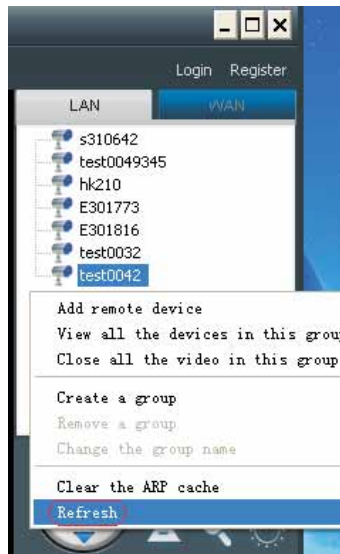
## 1 Getting Started

### 1.1 How do I view the local area network camera video?

Click on the right list area in the main LAN (see Figure 1), if the list area of the camera node, select the blank area to click the right mouse button in the pop-up menu, select "Refresh" menu (Figure 2) to help the camera fast on-line, if there is a camera node, double-click the camera ID. If you are prompted to request camera video failure! ", Check out the FAQ help.



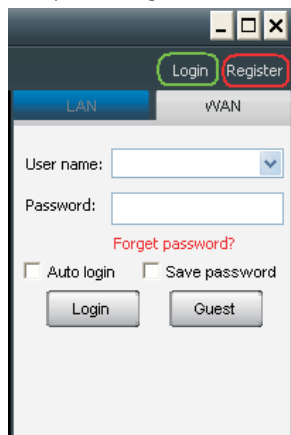
(Picture 1)



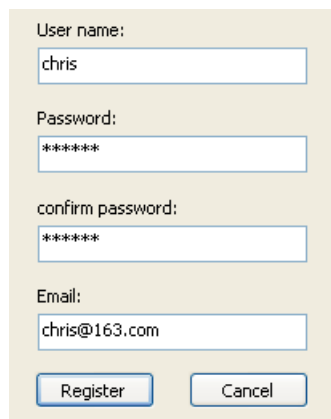
(Picture 2)

### 1.2 How to watch Internet video camera?

Click "Internet" in the area of the main list on the right (Figure 3), enter "User Name" and "password" and click "Login" button to log on to the Internet. If there is no user name, please click the upper right corner of the "Register" button pop-up application for the account dialog box (Figure 4), enter a custom user name and password, click "Register" button to complete the registration.

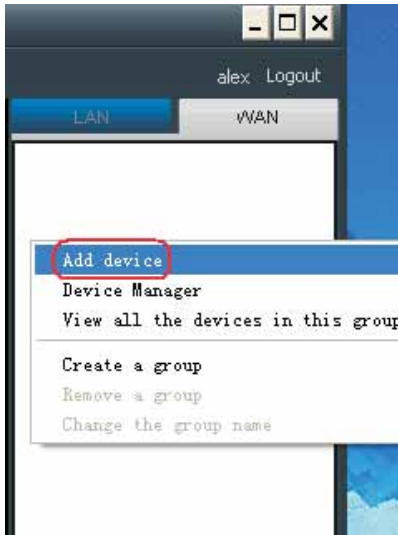


(Picture 3)



(Picture 4)

Right click on the Internet blank area in the pop-up menu, select "Add Device" menu (Figure 5), pop-up "Server Manager" dialog box (Figure 6), fill in the pop-up box "device alias, device ID, device watch the password. "



(Picture 5)

A screenshot of a 'Server Manager' dialog box. It has a title bar with a close button. The main content area contains several fields: 'Device aliases:' (text input), 'Device ID:' (text input with an asterisk), 'Device Access Password:' (text input with an asterisk), and a section titled 'Device administrator' which is currently unchecked. This section includes 'Device Manager Password:' (text input with an asterisk), 'Set watch device password:' (text input with an asterisk), 'Set watch device password(verify):' (text input with an asterisk), and 'Watch permission:' (dropdown menu showing 'Allow watch'). At the bottom are 'OK' and 'Cancel' buttons.

(Picture 6)

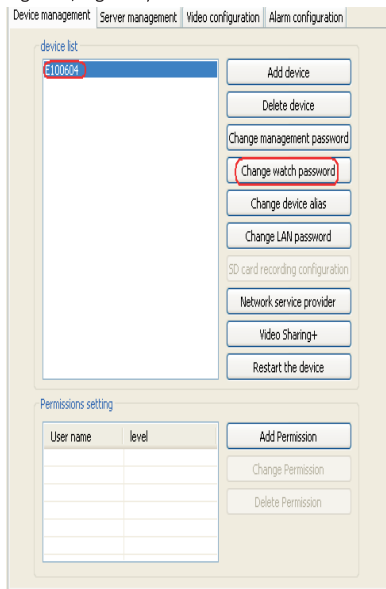
Such as user device administrator (Figure 6) above "Device Manager" before the check mark, fill "alias equipment, device ID, Device Manager Password, equipment, watch the password, visibility (Figure 7).

A screenshot of the 'Server Manager' dialog box, similar to Picture 6 but with the 'Device administrator' checkbox checked. All other fields and the 'Watch permission' dropdown are the same as in Picture 6. The 'OK' and 'Cancel' buttons are at the bottom.

(Picture 7)

For the Internet a blank area, click the right mouse button and select the "Device Manager" in the pop-up menu, pop-up

box (Figure 7) to modify the viewing password viewing password in the "Server Manager" box, select "Modify" (such as Figure 8, Figure 9)

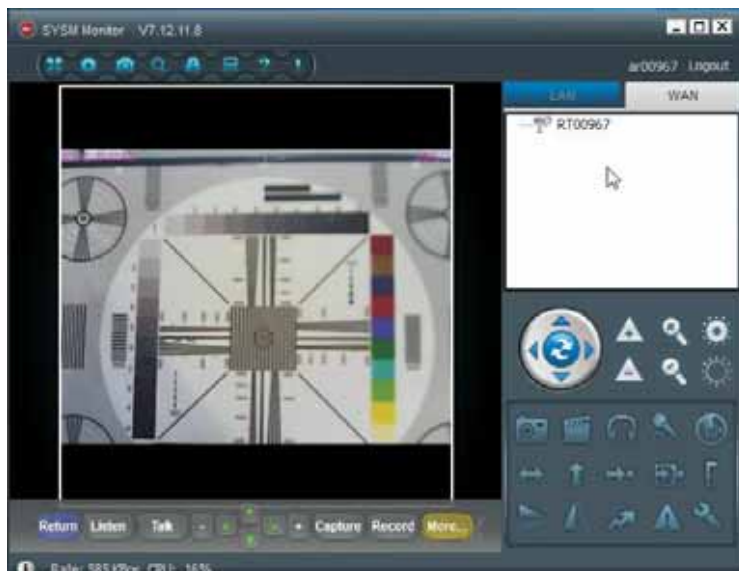


(Picture 8)



(Picture 9)

Double-click the camera ID, and watch the video (Figure 10). The blue camera line, the red camera video is already open, Gray said the cameras offline.



(Picture 10)

## 2. Overview

Thank you for using our monitoring software.

This manual is designed to allow users to better prepared to use our monitoring platform, system installation manual is divided into Features, FAQ sections. Through the manual, you can learn how to use this monitoring platform.

## **2.1 Intellectual Property Rights**

Company of the platform and related products, with completely independent intellectual property rights, without permission, any person or company for any reason the theft of the company's products or reproduced information document related to the company's products.

## **2.2 The main application**

Teller machine, bank teller, supermarkets, factories, cafes and other network monitoring

Nursing homes, kindergartens, schools provide remote monitoring services

Intelligent Access Control System

Intelligent Building, Intelligent Community Management System

Electricity power stations, telecommunication base station unattended system

Outdoor equipment, monitoring and management

Bridges, tunnels and crossroad traffic monitoring system

Pipeline monitoring, warehouse monitoring

24-hour surveillance of the Road Traffic

Remote monitoring of forests, water, and river resources

.....

## **2.3 Technical Support and Services**

In the course, if you encounter any technical problems, you can contact your local dealer. If your problem can not be resolved immediately, he will refer the question to reflect the company technical department to ensure the fastest solution to your problem. You can also try to resolve the following ways:

- 1) Follow the prompts to download the latest version to upgrade.
- 2) in the Company's website "Frequently Asked Questions page to find your answer.
- 3) contact through the website of the Company's customer service phone company staff.

## **3.the installation wizard**

### **3.1 Hardware installation instructions**

To see if the device in the box accessories are complete, the accessories shown in Figure 1-1: user manual, stand, camera, antenna, cable, screws and fixed plastic disc, the power supply.

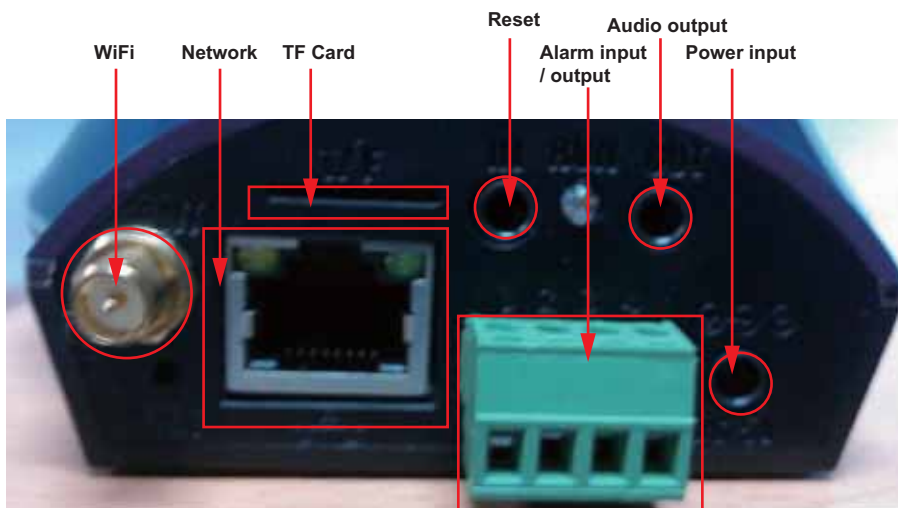


Picture 1-1

### 3.2, complete view device accessories, equipment, accessories installation

(Hint: behind the camera port as shown in Figure 1-2):

- (1) camera antenna is mounted at the WiFi interface, and then a port of the network cable connected to the cable interface, a port of the network cable connected to the router port; For Reset button is for reset the IP camera setting.
- (2) For the use of the audio output device, the audio cable plugged into the audio output port;
- (3) Finally, the power cord is connected to the power of the camera back-end interface.



Picture 1-2

The above accessories are installed, as shown in Figure 1-3



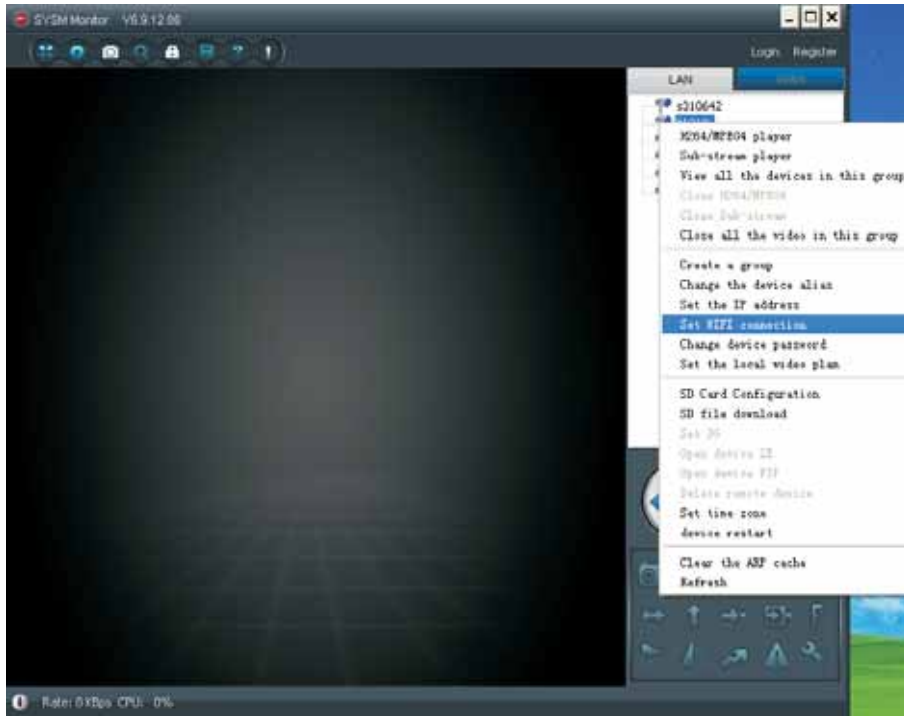
Picture 1-3

The router power cord, camera power cord plugged into the power plug on the power, then the power LED will light up; equipment green network indicator will light (if unchanged light can be re-inserted normal power supply, or check the switch or router). Then turn on the computer camera software installation,

### 3.3 software to install the graphics process

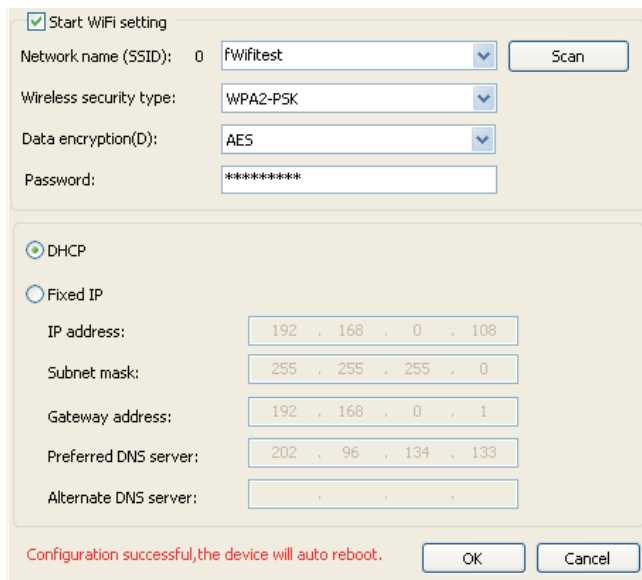
1, the PC software settings

Double-click the desktop shortcut to open the software, in the right side of the software interface with the mouse to click on the "LAN" "LAN" space below the right mouse button menu, click "Refresh" to search all devices within the LAN, click on the appropriate devices, right-select set up a wireless (wifi), shown in Figure 3-1 appears:



Picture 3-1

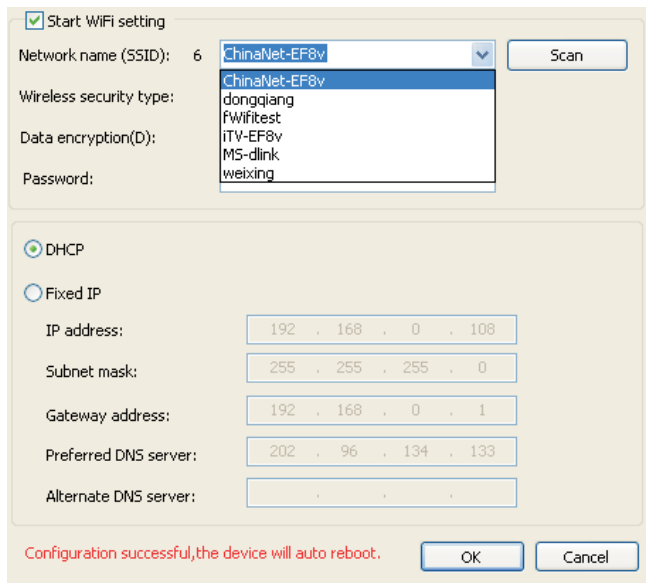
Then the pop-up window in Figure 3-2, click on the diagram block diagram of the 3-2 top of the start wifi settings, Figure box is ticked, then click on the right of the frame on the "Search" (Figure 3-2)



Picture 3-2



Click Search, the next drop-down list (Figure 3-3) to find their own wireless wifi enter the password to match, or according to its own network, to choose their own IP is automatically obtain or manually enter. Select OK after the device restarts. (Hint: this time will be connected to unplug the cable behind the camera)

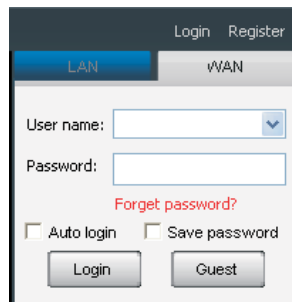


Picture 3-3

After the device reboots, there will be longer on the list to see the equipment online, this time is finished viewing the wireless LAN.

PC-side remote viewing

Internet option (Figure 3-5) in the list on the right to open the device software interface



Picture 3-5

Tip: the base of each device has a corresponding user name and password

Click on the software interface to the upper right corner of the Internet, using the user name and password for network logon, they can log on to the device; another can also use the upper-right corner of the screen "Register" to register log on (see Figure 3-6)



User name:

Password:

confirm password:

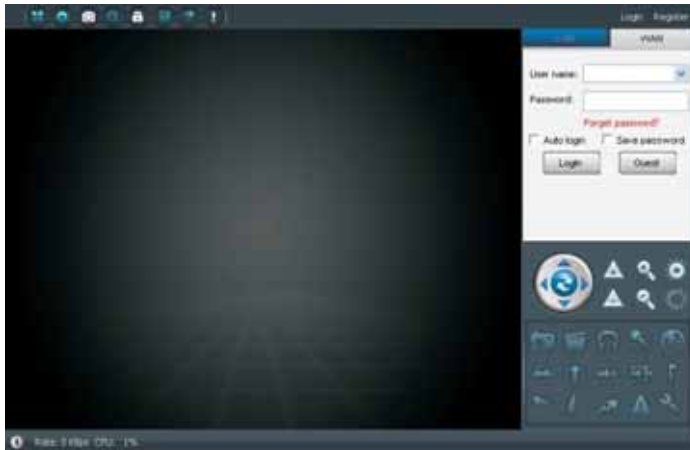
Email:

Picture 3-6

## 4、login screen

### 4.1 Login

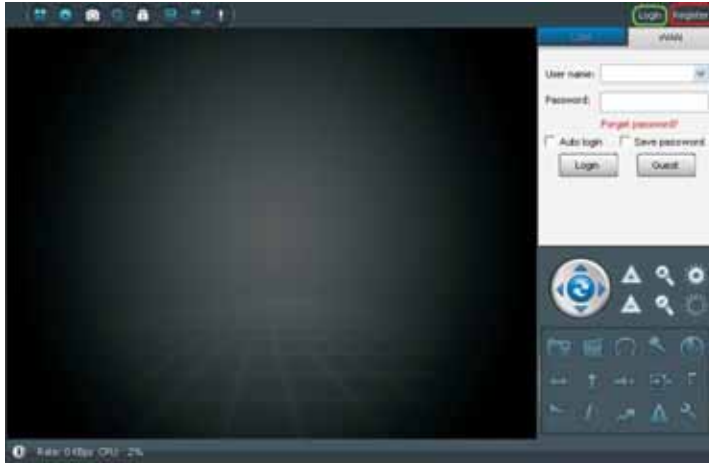
Click on the shortcut on the desktop pop-up monitoring software interface, click the upper right corner of the screen "Login" in the login box, enter the user name and password, click to sign in.. If there is no user name can click the "Register" and follow the prompts to apply.



Exit: To close this software, click on the top right corner of the Close button in the pop-up prompt box, choose "Yes" button



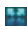



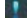
Cancellation: After logging in, if you want to switch other users must log off to switch users. Click on the upper right corner of the "canceled" and then enter the user name and password to login



#### 4.2 Menu

There are eight buttons in the upper left corner of the software, from left to right: full screen, set the camera management, query, modify password operation log query, help, equipment change notification. Click on the different function buttons can be set accordingly. Figure:



- 1)  Full screen.
- 2)  Settings: you can login to the system, monitoring and management-related settings
- 3)  The operation log query.
- 4)  Help: Click to pop up the help file, help to more quickly use the software.
- 5)  Device change notification

Note: in later chapters related functions will continue as detailed.

#### 4.3 The Change Password

Internet successful login, click "Change Password" button on the menu bar, pop-up window, enter the original logon password and new password to modify.

Old login password:

New login password:

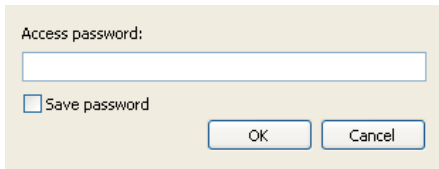
Verify:

### 5、 local area network camera

Used to display all online camera in the LAN, and they are grouped, browse settings.

### 5.1 LAN cameras browse

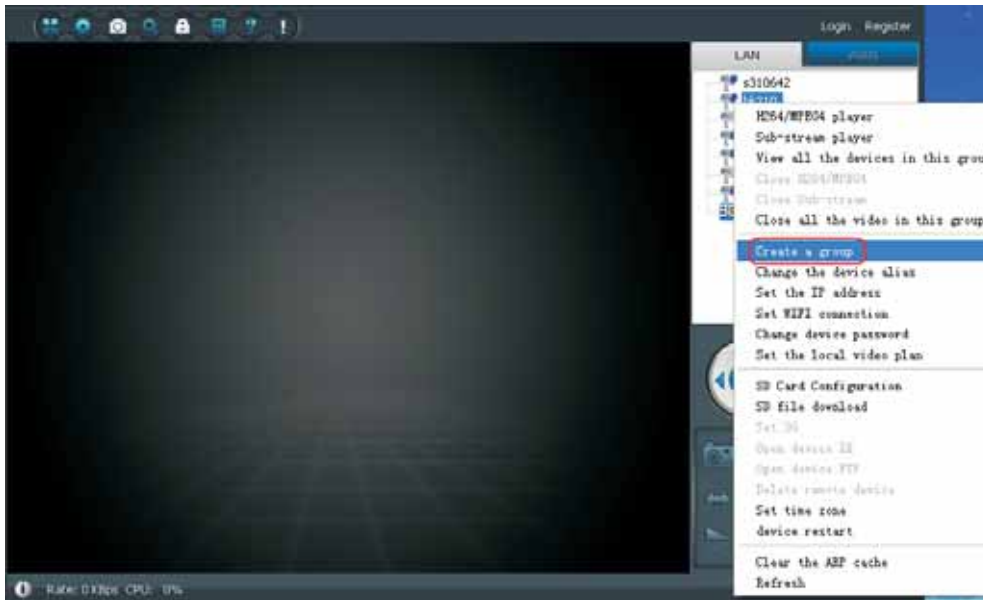
Start the monitoring software, all the cameras within the LAN will automatically appear in the local area network list can be monitored by double-clicking the device name specified equipment; LAN browsing devices need to enter the access password, the device default access password is "123456"; the user can modify



In the pop-up window, enter the correct access password (check the Save Password, then the next time you visit, do not need to re-enter the password), you can start browsing.

### 5.2 Group Management

Blank space in the "LAN" column, right-click the device name at the bottom displays the following menu.



LAN camera grouping method:

1) Add the group: Click to add grouping in the right-click menu, enter a suitable name for the group in the pop-up interface, you can. You want to delete the packet you can right-click the group name and click the "Delete group" to display the pop-up box.

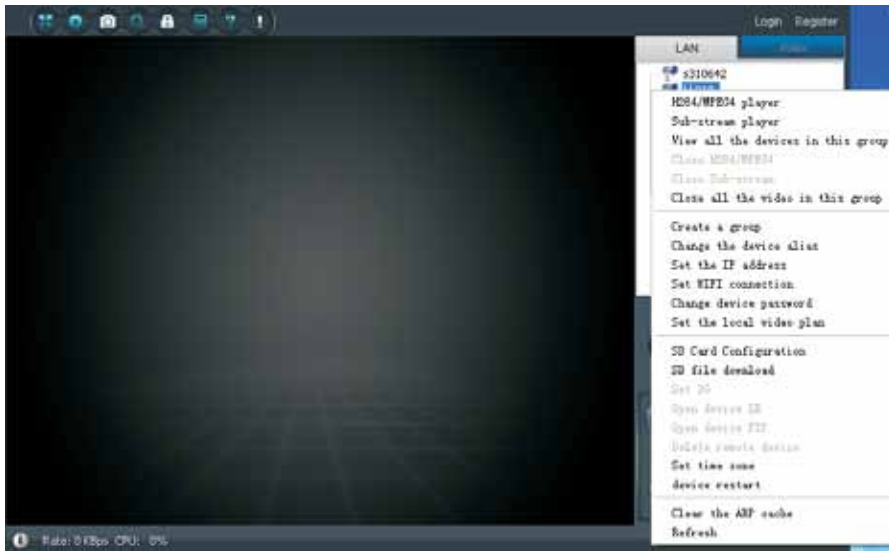
Please enter a new name:

OK Cancel

2) to add the camera to the appropriate grouping: select the camera ID, hold down the left button of the camera to drag it to the packet, release the left mouse button.

### 5.3 LAN camera settings

All cameras within the LAN can be set accordingly, right-click the need to set the camera ID, click on the appropriate options in the pop-up display box set



Including: MPEG4, playback, M-JPEG playback, modify the camera alias, set the camera IP, and modify the camera password.

- 1) MPEG4 player, M-JPEG playback: Yes, you can select playback while browsing.
- 2) modify the camera alias: set a friendly name for the local area network cameras. Figure

Please enter a new name:

OK Cancel

Set the camera IP: specify a particular IP address for LAN cameras, or automatically re-assign IP addresses do not need to set up, under normal circumstances.

**IP Address information**

DHCP  
 Fixed IP

IP address:

Subnet mask:

Gateway address:

Preferred DNS server:

Mac address:

LAN port:  ( 5000 ~ 10000 )

Network operator:  ▼

Only use the device in the LAN

**Device Status**  
 Login Successful

modify the camera access password: Modify the LAN cameras local access password to prevent unauthorized access. Enter the old access password (default: 123456) and the new password you can.

Old password(Default password 123456):

New password:

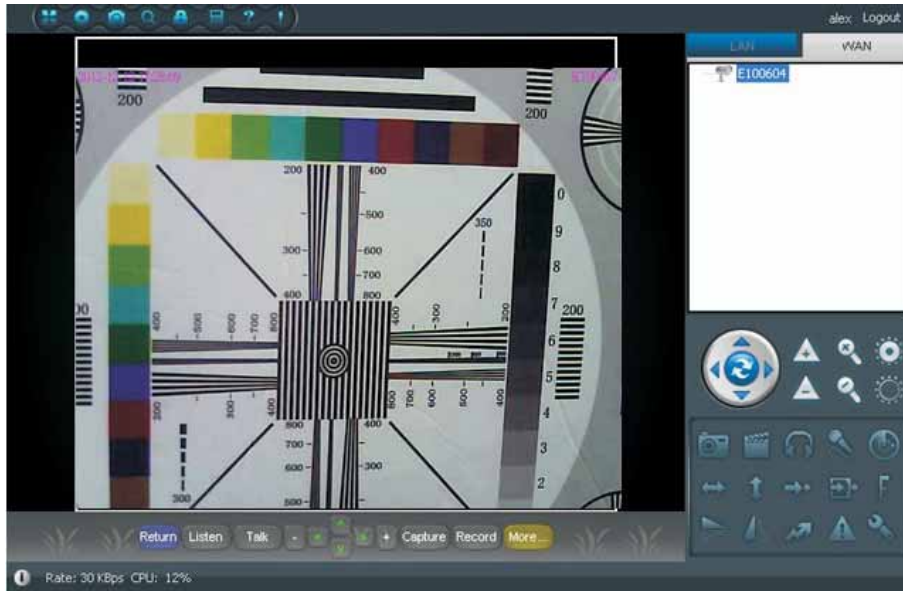
Verify:

## 6. Internet camera

Used to display the current users to add network surveillance cameras, and they are grouped, browse, modify, delete.

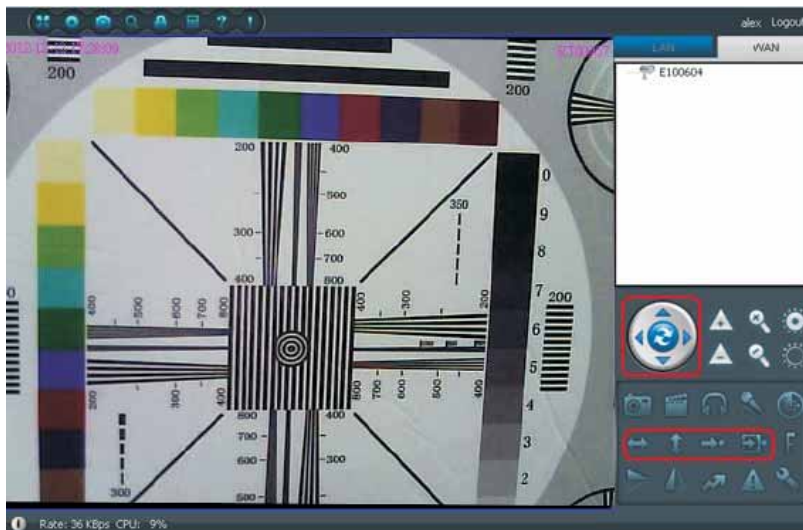
### 6.1 Internet cameras browse

Monitoring software, the login is successful, the Internet will automatically display just installed the device ID, double click on device ID can browse the video image. The left mouse button double-click the video image, the function buttons on the right into the color, can be related operations



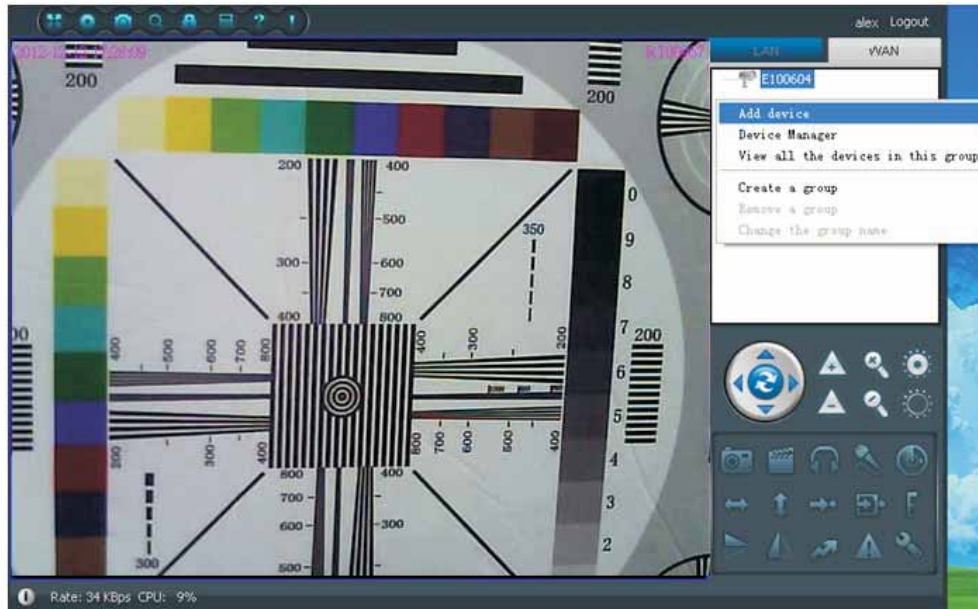
- Note:
- 🟢 Said camera online, you can monitor;
  - 🔴 That the camera is not on the line, not monitoring.
  - 🟡 Said camera is being accessed to monitor

PTZ camera machine, you can also PTZ control, adjust the camera up and down orientation.



## 6.2 Internet camera add

If you want the other devices via the Internet, such as field offices or equipment of foreign friends, you need to manually add the device. Bar in Internet camera, right click the device name the bottom of the blank pop-up display box, you can add grouping, grouping delete, modify the name for the group, add cameras, browse the group and all cameras.



Add camera, enter the ID number of the remote cameras, adding after the success of double-click the ID number on the remote to browse:

### 6.3 Group Management

Internet camera grouping method:

Add groups: see Figure 5.2 Click the add grouping in the context menu, in the pop-up interface, enter the appropriate name for the group as you want to remove grouping can right-click the group name in the pop-up display box, click the "Delete grouping can.

The screenshot shows a dialog box titled 'Group name:'. It contains a text input field for entering a group name. Below the input field are two buttons: 'OK' and 'Cancel'.

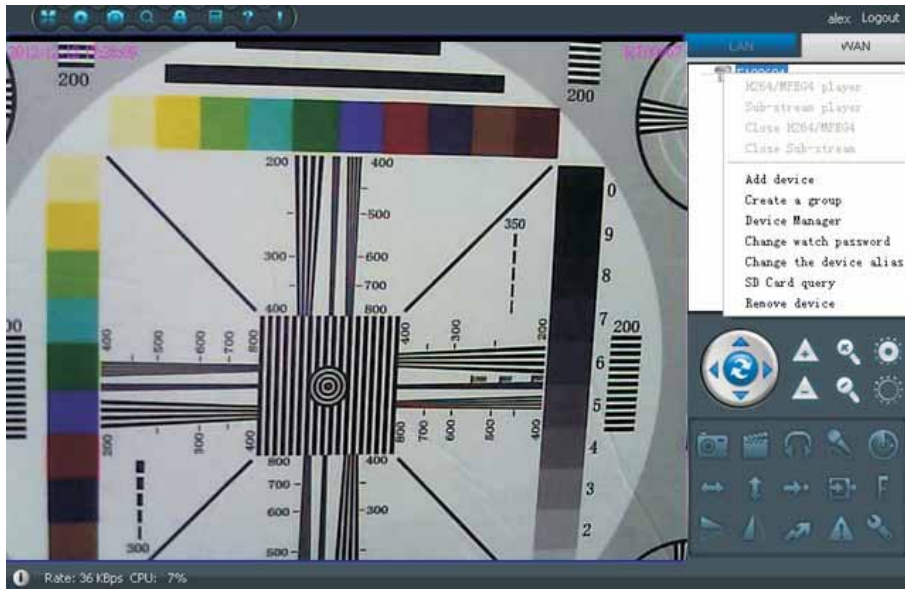
Add cameras to the group: select the camera ID, hold down the left button of the camera to drag it to the packet, release the left mouse button.

### 6.4 Internet Camera settings

All cameras within the Internet can be set accordingly, right-click the need to set the camera ID, click on the appropriate



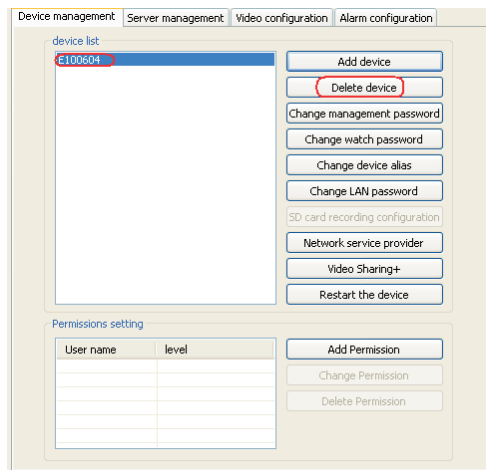
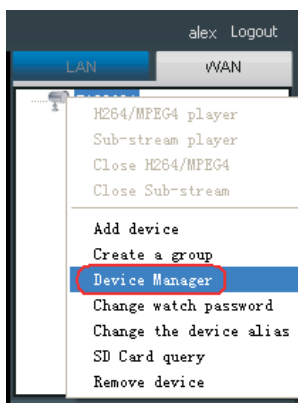
options in the pop-up display box set:



Including: MPEG4, playback, M-JPEG playback, modify the camera alias, delete functions.

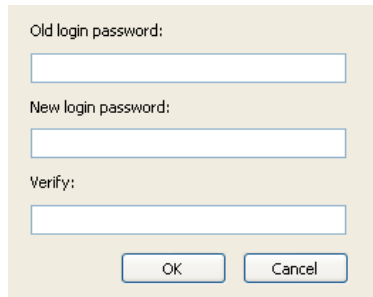
- 1) MPEG4 player, M-JPEG playback: Yes, you can select playback while browsing.
- 2) modify the camera alias: set a friendly name for the Internet camera.

3) Delete the camera: do not want to view the video of the specified device, it can be deleted, click the "Delete camera. In the pop-up display box click "Yes" to delete



## 6.5 Change Password

Internet successful login, click "Change Password" button on the menu bar, pop-up window, enter the original login password and new password to modify.



A dialog box for changing a password. It contains three text input fields labeled "Old login password:", "New login password:", and "Verify:". At the bottom, there are two buttons: "OK" and "Cancel".

## 7. Video surveillance

Video monitoring capabilities can open the video, listen to, video, capture, set the operation.

### 7.1 function menu

Some function buttons such as: Listening to capture in the lower right corner of the software angle, to speak, to start recording, set, close, etc... Click on the different function buttons can be the corresponding function. Figure:



Optical zoom



Digital zoom



Aperture switch



Capture: capture pictures and browsing of video images can be saved.







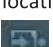






Beginning of the video: browsing video image recording and save.



Listen: you can hear the sound of browsing video camera acquisition.



Speech: You can talk through the microphone and camera on the computer next.

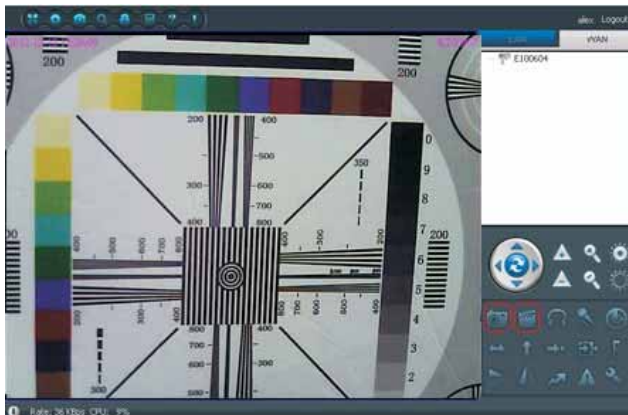
-  Set motion detection area
-  Level cruise start and stop.
-  Vertical cruise start and stop.
-  Move to the preset position, and mobile surveillance camera to the specified preset number location.
-  Set preset position, the current video current position as the corresponding preset number.
-  Set the PTZ speed
-  Flip Vertical
-  Mirror
-  Cruise line
-  The alarm log
-  Setting the parameters

### 7.2 video capture

On the monitoring screen monitor while browsing, video or photograph, and can be saved to the local computer.

The operation of the video: click the start recording button in the function menu, the system will start recording and save it to the specified directory.

Capture operation: click the capture button in the function menu, you can save the current video image into a JPG image and saved to the specified directory



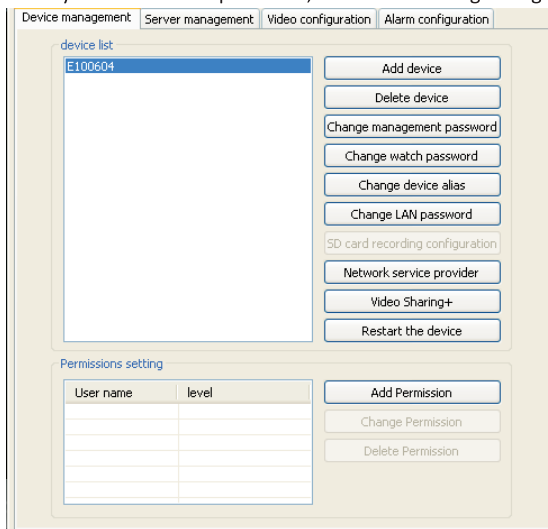
### 7.3 parameter settings

Click the Settings button in the function menu will pop up as shown below interface, camera motion detection sensitivity parameters, adjust the settings.



## 8. camera management

Click on the upper left corner of the camera button , pop-up camera interface include: add cameras, camera to delete, modify, manage passwords, modify the viewing password, modify the device alias, modify the LAN access password, SD card recording configuration, ..... and so on.



- 1) Add camera: You can add the need to manage the camera
- 2) Delete the camera: remove now manages the camera. Click on the camera management ----- delete the camera option in the pop-up box, click "OK" button to delete..