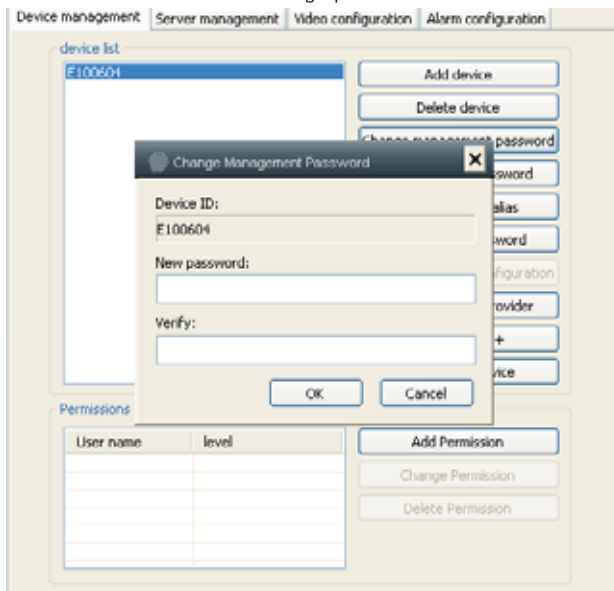


- 1) to modify the authentication method: modify camera access to other people (details please see 8.3).
- 2) to modify the management password: enter the old admin password in the pop-up display box, point to the same attached to the instructions on the login password can be modified and a new password.

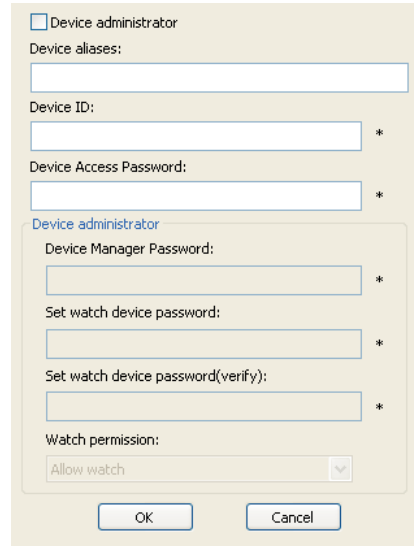


- 1) to modify the camera alias: set a friendly name for the camera.

Right click on the Internet blank area in the pop-up menu, select "Add Device" menu (Figure 5), pop-up "Server Manager" dialog box (Figure 6), fill in the pop-up box "device alias, device ID, device watch the password. "

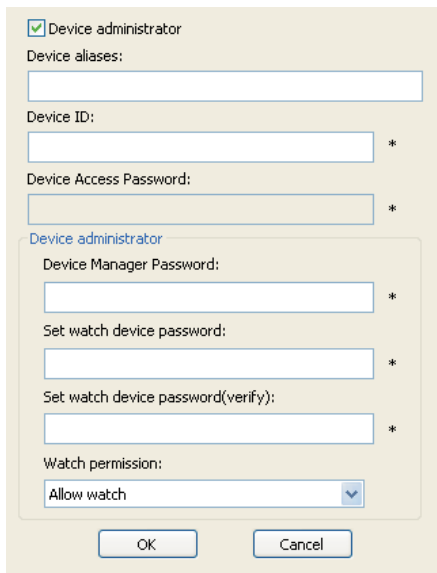


(Picture 5)



(Picture 6)

Such as user device administrator (Figure 6) above "equipment manager" before the check mark fill "alias equipment, device ID, Device Manager Password, equipment, watch the password, visibility (Figure 7)

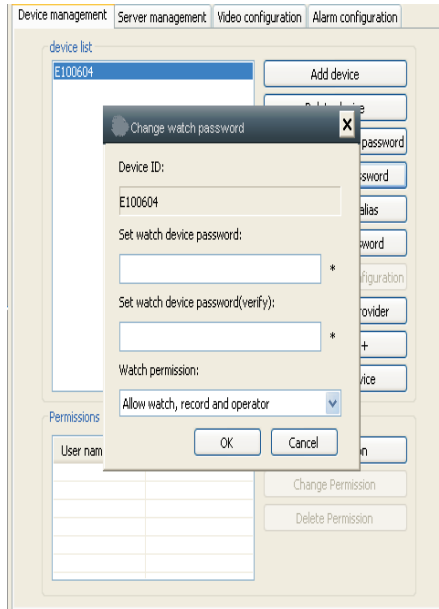


Picture 7

For the Internet a blank area, click the right mouse button and select the "Device Manager" in the pop-up menu, pop-up box (Figure 7) to modify the viewing password viewing password in the "Server Manager" box, select "Modify" (such as Figure 8, Figure 9)

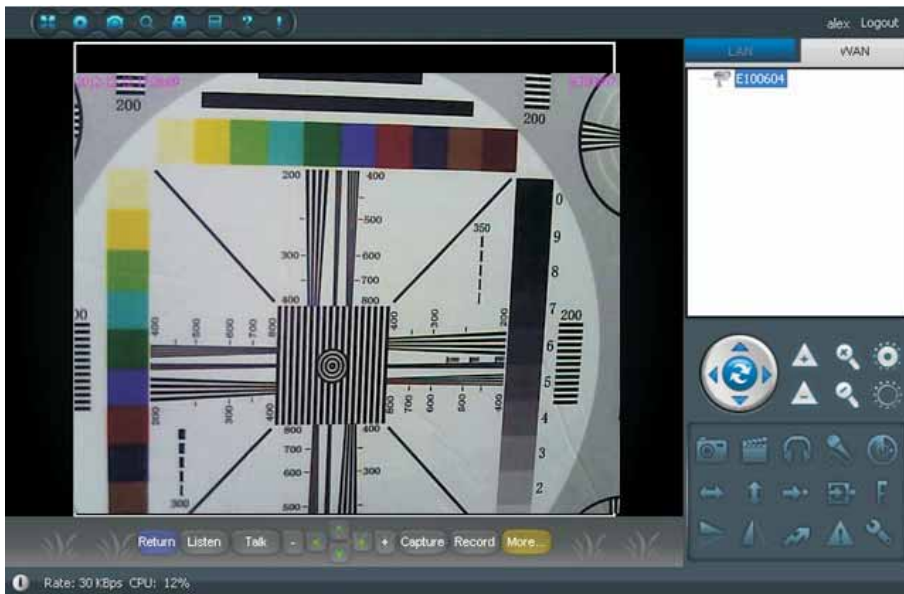


Picture 8



Picture 9

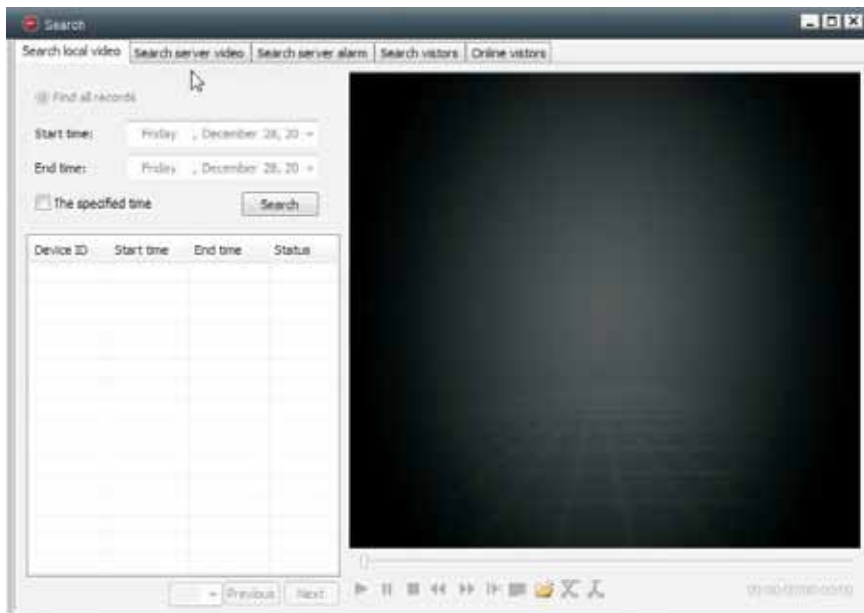
Double-click the camera ID, and watch the video (Figure 10). The blue camera line, the red camera video is already open, Gray said the cameras offline



Picture 10

9. inquiry function

Click the Query button () function to query the local video server video query, the server alarm query, access to records inquiries, online visitors



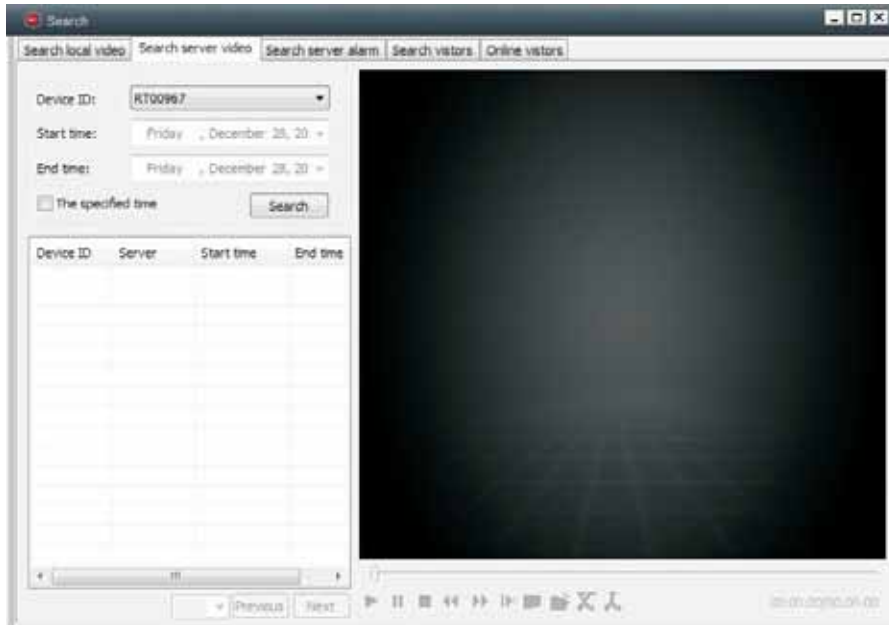
9.1 local video query

According to the conditions of the query video recordings on a local or server, and can double-click the video recording for video playback.

Note: video playback support for pause, slow down, fast forward, drag the progress bar and other operations.

9.2 server video query

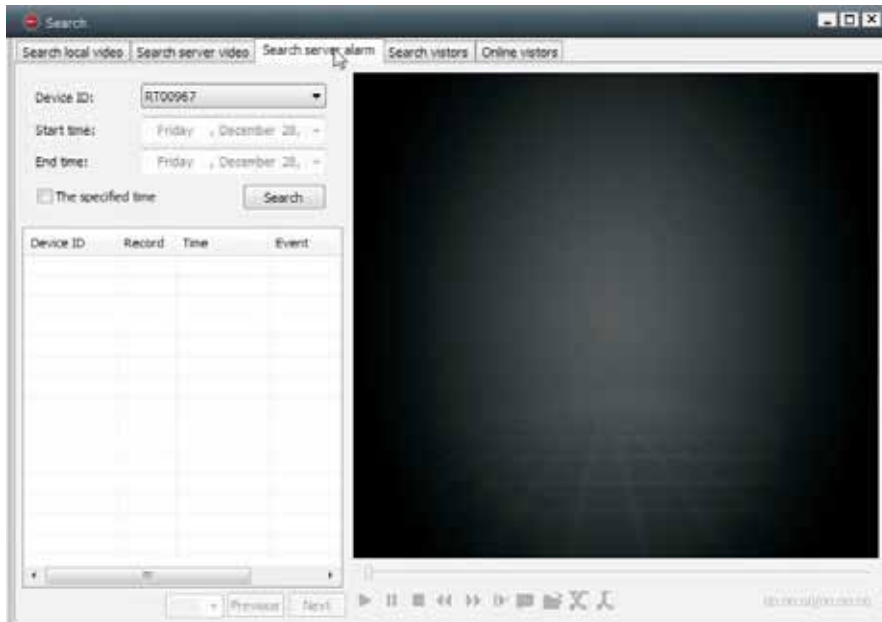
According to the conditions of the query on the server video recording and can double-click the video recording for video playback, as shown below:



Note: the server-related functions only in the opening of the server service after.

9.3 server, alarm queries

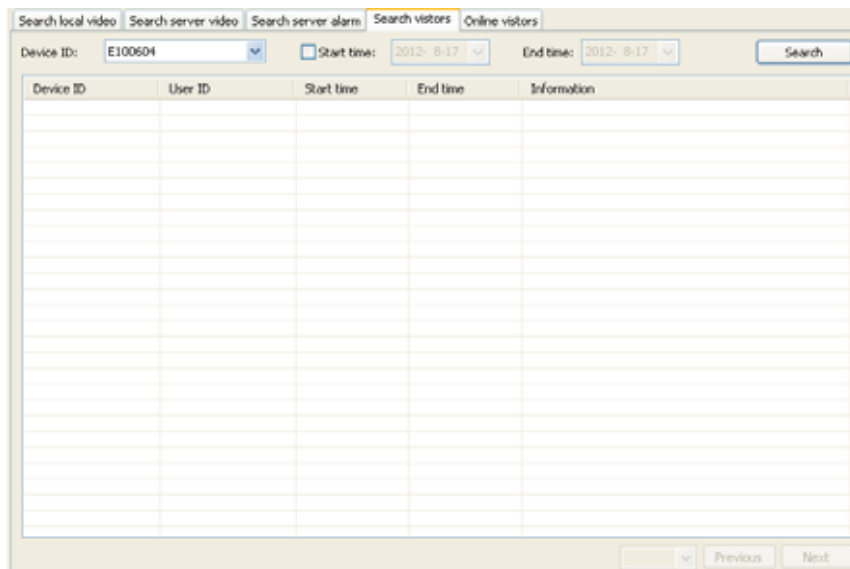
When the device when an alarm occurs, the system will automatic recording and save it to the service area. According to the conditions of the query on the server video recording and can double-click the video recording for video playback, as shown below:



Note: the server-related functions only in the opening of the server service after

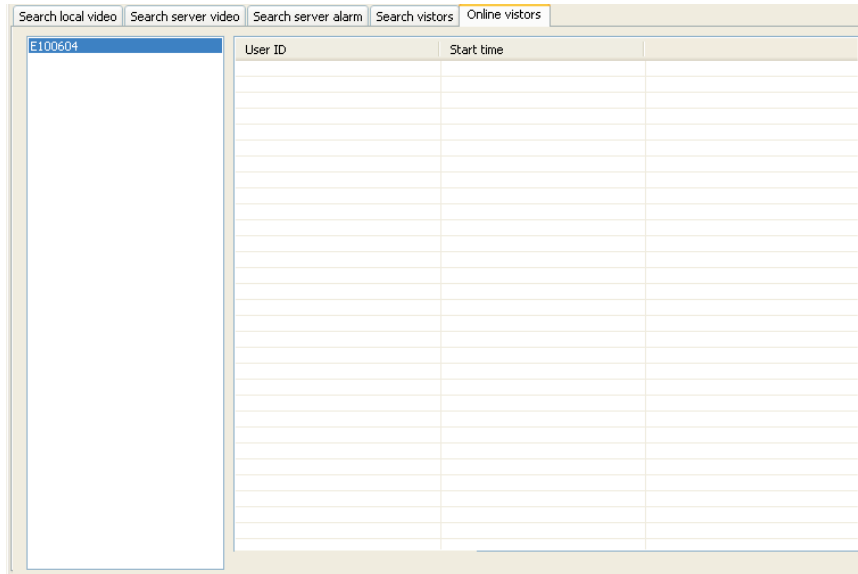
9.4 access to records query

Can specify camera query access to records in the specified time period, as shown below:



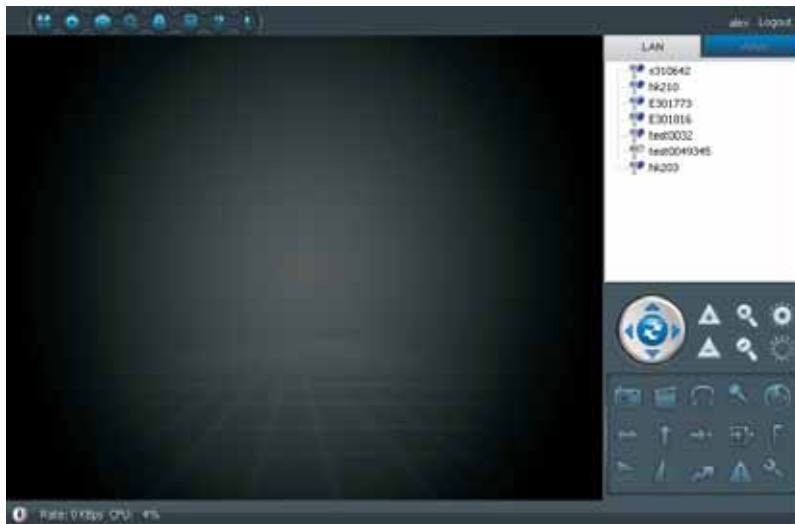
9.5 online visitors

Can query the specified camera now which users are browsing, as shown:

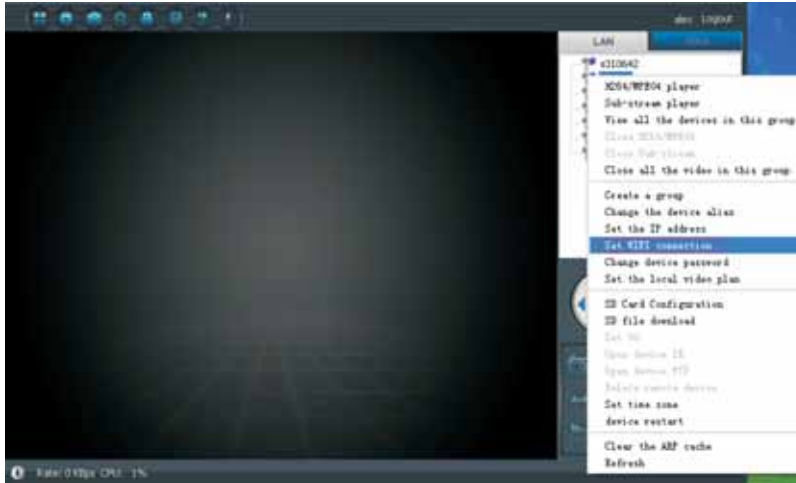


10. Wireless Configuration

A. Connect wireless devices, where the connection is a LAN using a wired connection to the computer, so that our client can see the equipment in the LAN. (LAN equipment automatically appear). As shown below:...



Right-click the device id will appear as shown below option, and select (set up a wireless (Wifi))



6) Choose to set up a wireless IP to set up a wireless connection information box appear as shown below.:

Start WiFi setting

Network name (SSID): 0

Wireless security type:

Data encryption(D):

Password:

DHCP

Fixed IP

IP address:

Subnet mask:

Gateway address:

Preferred DNS server:

Alternate DNS server:

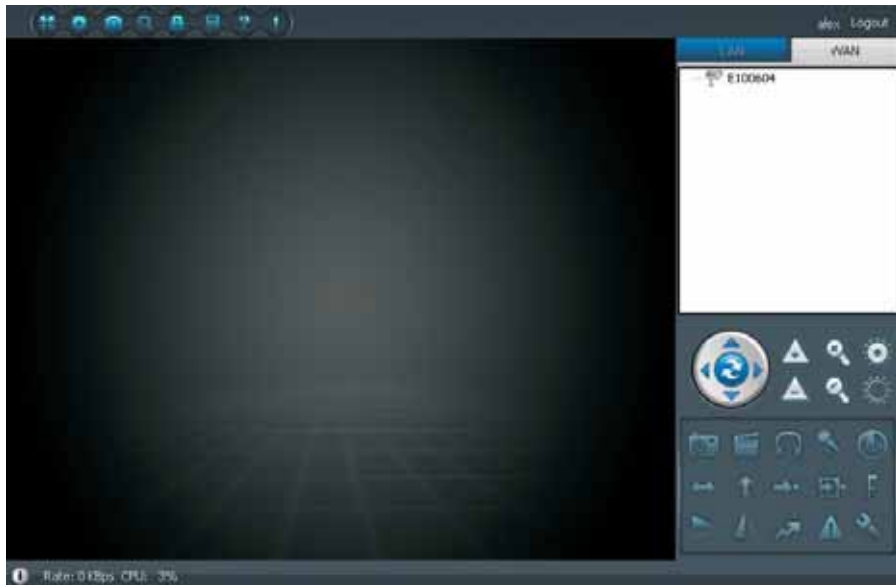
Configuration successful,the device will auto reboot.

- (1) Select start the wifi settings.
- (2) Click to refresh you want to connect the wifi connection point (ssid).
- (3) the type of wireless security, click on the wifi details view you want to connect to wifi what type shown below.
- (4) select the corresponding data encryption.
- 5 Enter the wifi connection password.

Note: wifi connection is successful, the cable network may exist to refresh less than the wireless device, unplug the network cable of the device to restart.

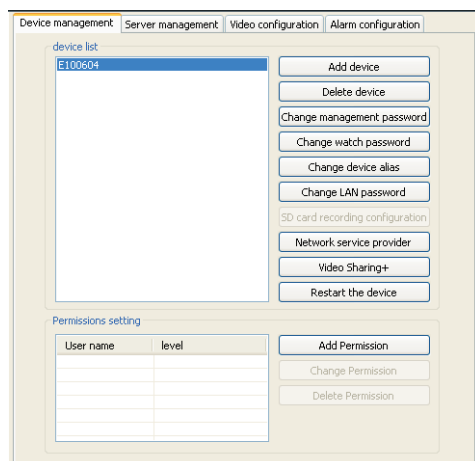
11、 Internet video server

1, the first access to the Internet, as shown below:



2, Click on the toolbar the third button () appears as shown below:

Camera Management: refers to their own devices, you must add their own equipment prior to the server video, the video server can only be recording their own equipment, the equipment is a list of cameras.



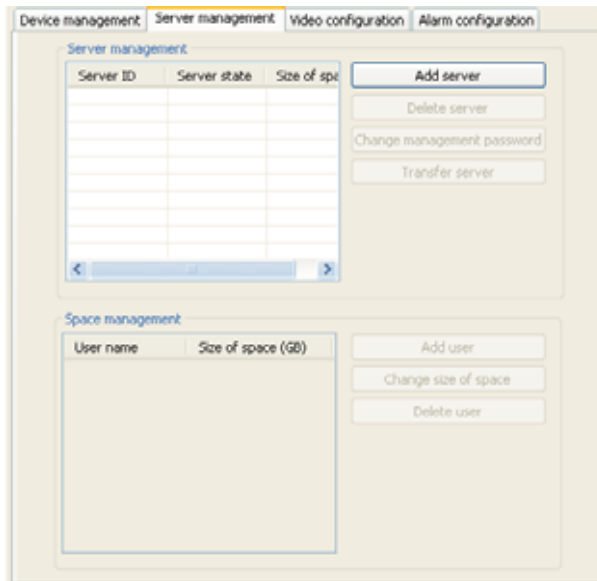
Server Manager: Click the Server Manager as shown below:

1) Add the server, enter the name and password you are buying a video server to add the video server.

Completed as shown below shows, the server ID, server status (online, online, offline not online), size (the size of a video

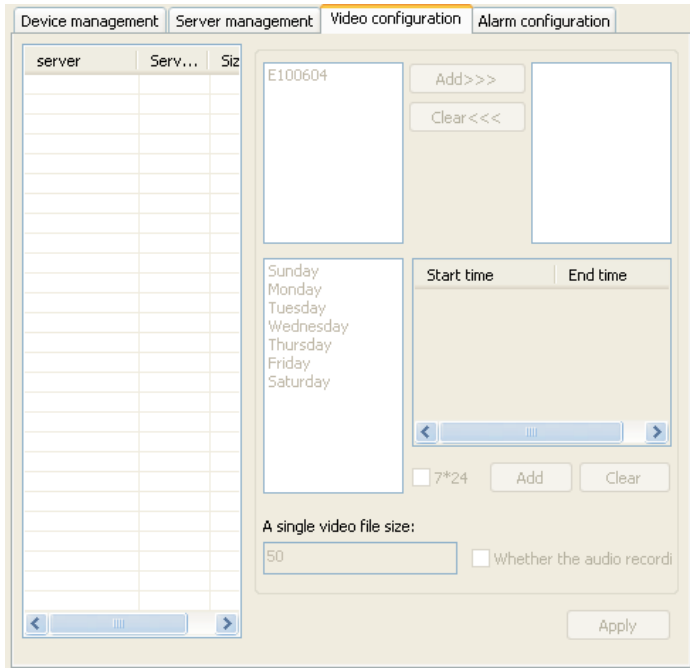
server that you are buying)

- 2) Delete the server will delete all information, including your video on your chosen server.
- 3) modify administrative passwords, proposed to amend the initialization password before using.
- 4) transfer the server, server to another user.
- 5) the lower right corner, add a user, a portion of the video server space allocated to another user.
- 6) modify the information, and modify another user's space.
- 7) delete users, delete users one of the allocated space.



Server Manager: Click the Server Manager as shown below:

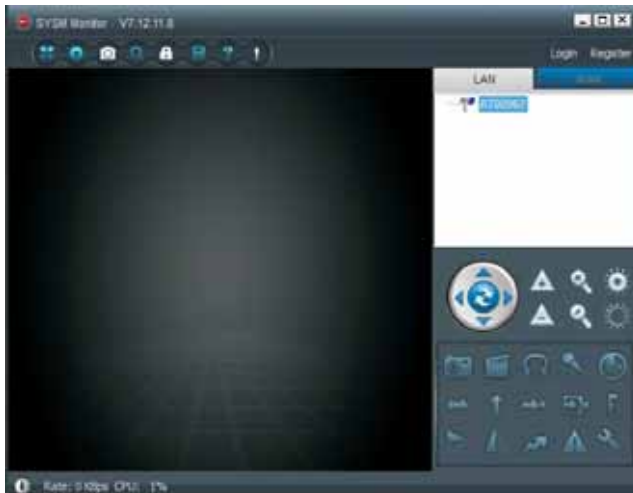
- 1) Add the server, enter the name and password you are buying a video server to add the video server. Completed as shown below shows, the server ID, server status (online, online, offline not online), size (the size of a video server that you are buying)
- 2) Delete the server will delete all information, including your video on your chosen server.
- 3) modify administrative passwords, proposed to amend the initialization password before using.
- 4) transfer the server, server to another user.
- 5) the lower right corner, add a user, a portion of the video server space allocated to another user.
- 6) modify the information, and modify another user's space.
- 7) delete users, delete users one of the allocated space.



12. Local area network video server

Local area network video server is not connect outside the network video server on the LAN equipment video. The video server can connect power cable.

1 following the instructions in the video server (hkmsr1) will be displayed in the list of the client's LAN.



Right-click the video server will be the following diagram as shown in the menu:

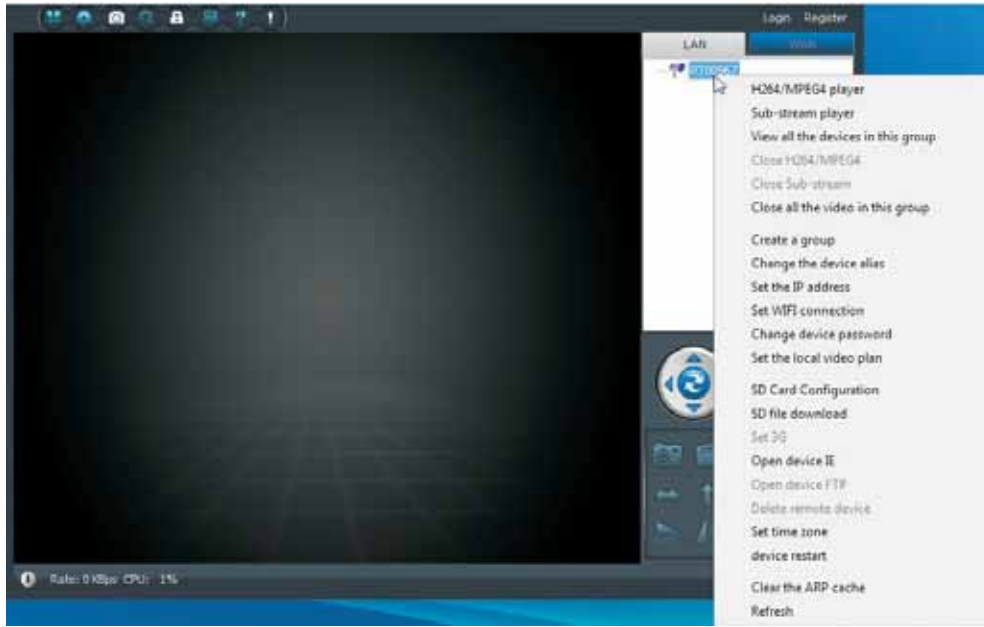
Query video recording (and playback of video recordings)

Recording scheme (set the device to the video program)

Modify the access password (local area network access password)

Set the time zone (set your current server time zone, the first run-time must be set in China, select Area 8 on it)

Video operation to open the device the IE (in IE)



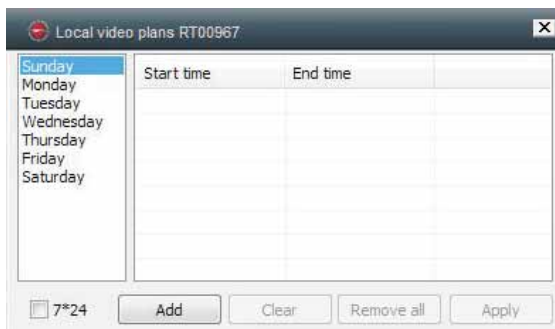
Set local video record plan, as shown below:

(1):click right button on the device

(2):select " Set the local video plan"

(3): No. 3 Click Add to select the day it within a recording time of a video.

(4): add finished, click Apply to save the current video equipment plan set.

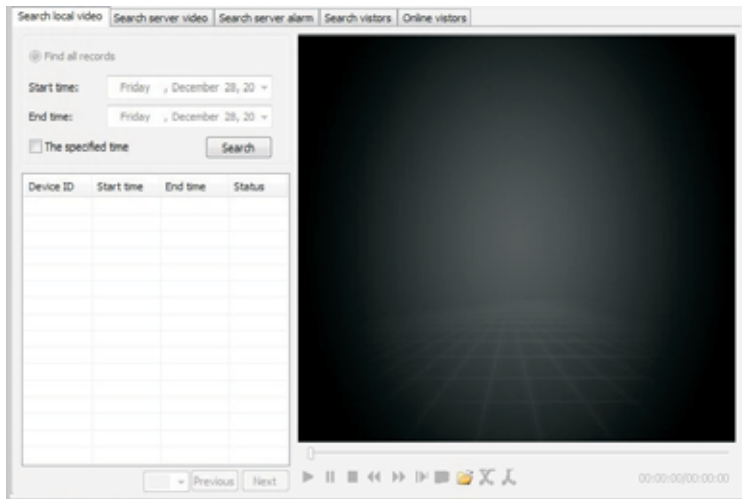


Click the query video recording, as shown below:

No. 1 Device ID: select the camera you want to query.

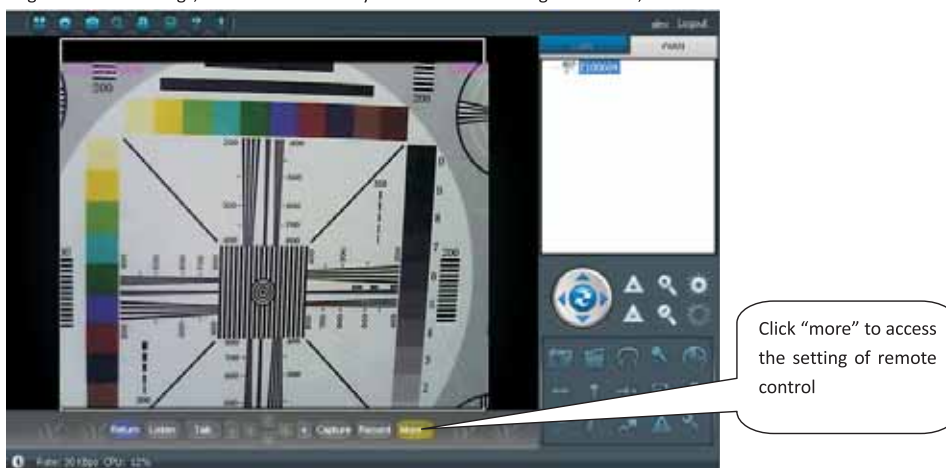
No. 2 query: Click query, query the current video recording equipment.

No. 3 in the video recording device, double-click a record playback.

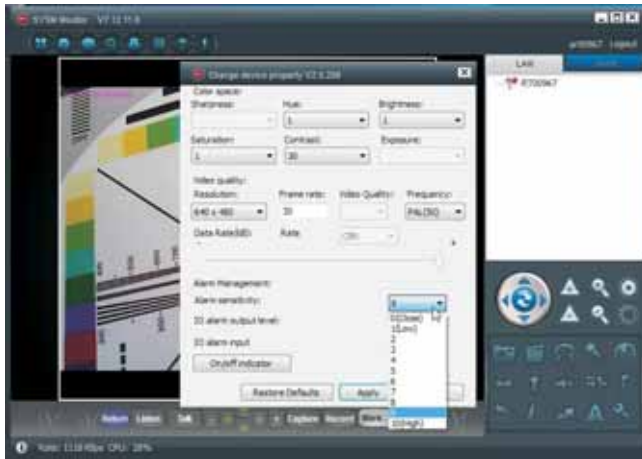


13.1 Regional alarm set

Regional alarm settings, browse the camera you want to set the regional alarm, as shown below:



Click the "motion detection area", to set the detection area, as shown below:
Alarm sensitivity: 0-10, 0 means close.



Application: To determine the settings you have done
 Close: Quit the setup

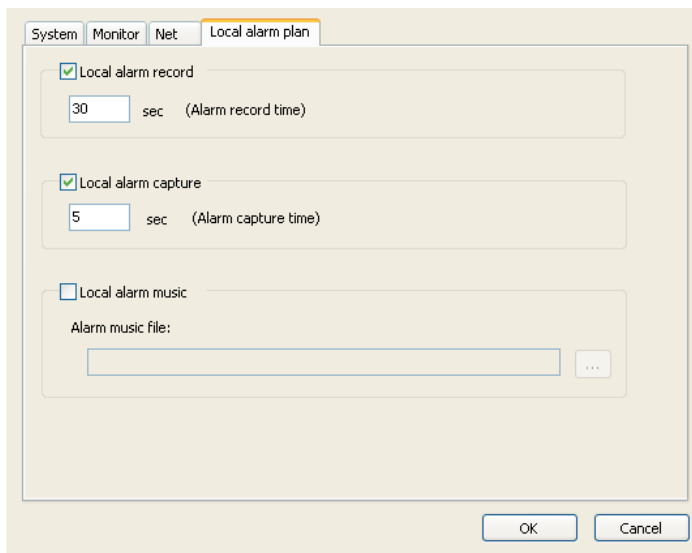
13.2 local alarm plan set

Click (Settings), select the local alarm schemes, as shown below:

Local alarm recording: whether the video when the alarm

Local alarm capture: alarm time interval when snap

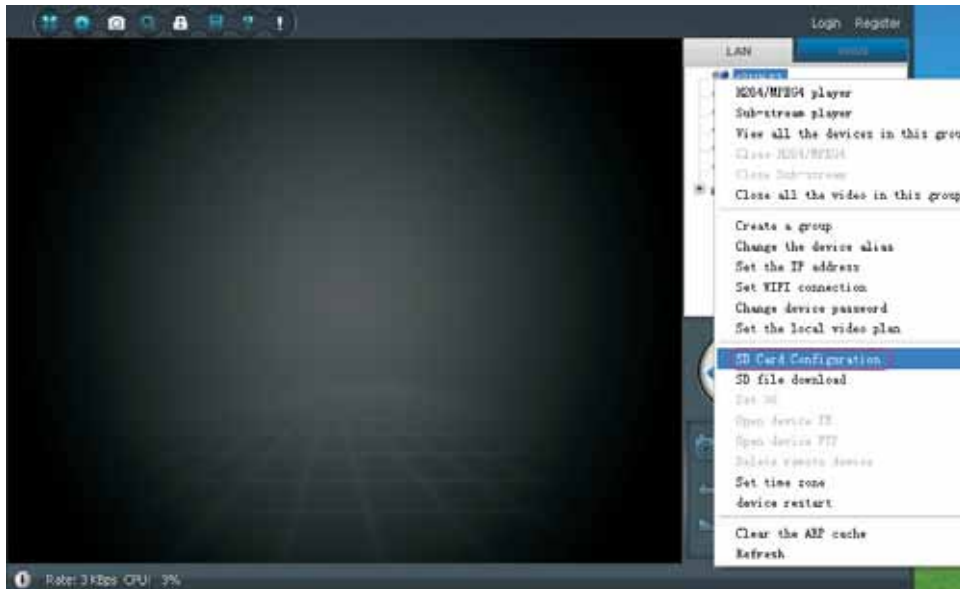
Local alarm music: audible alarm



14 SD card operation

14.1 SD card configuration

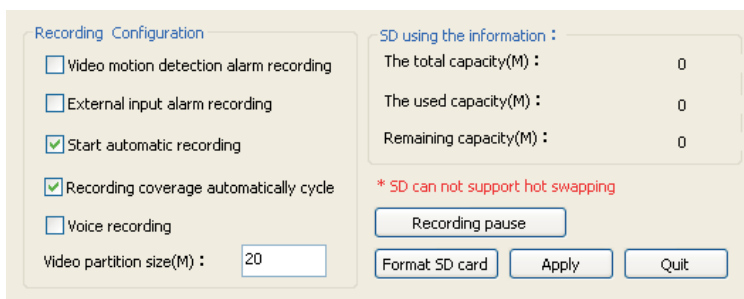
Right-click the camera ID, select the SD card video settings. As shown below:



1 Select the video configuration you need

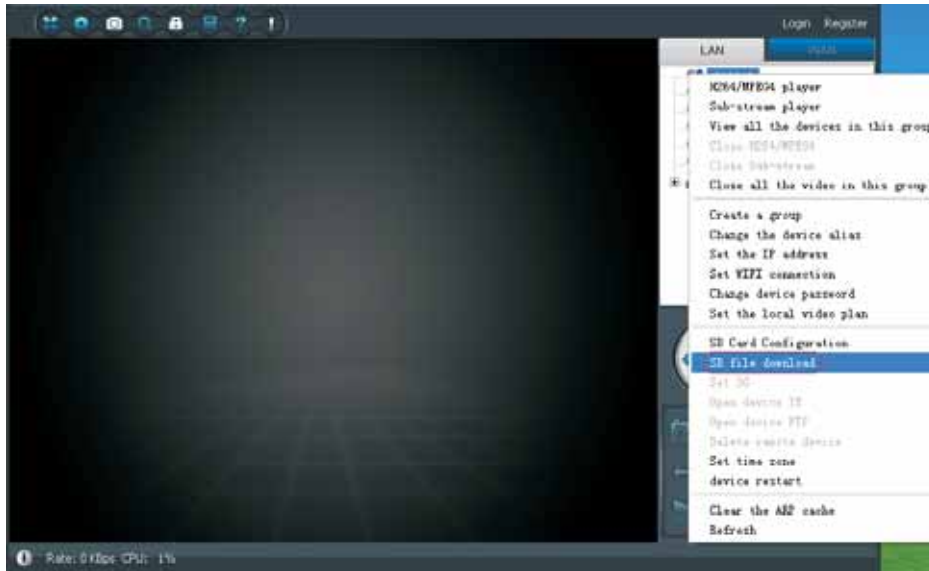
2.SD use information

(Note that the SD card does not support hot-plug)



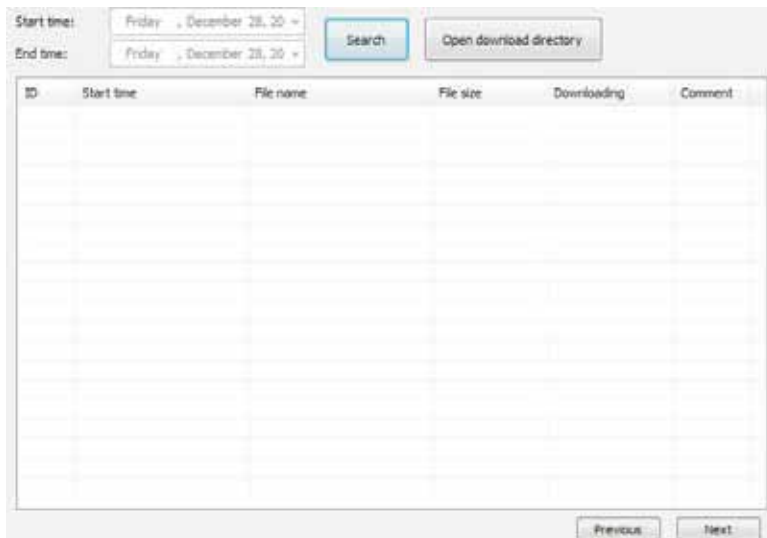
14.2 SD card video file to download

Right-click the camera ID, select the SD card video settings. As shown below:



Click Find to obtain the file directory on the SD card

Double-click the file you want to download, and supports up to three file downloads..



A. Frequently Asked Questions

1、 network latency

Answer: because the uplink speed of the video delay and IP Camera side, the download speed of the PC browser-side, the video resolution is closely related; In this case, please let our technical staff is an IP Camera, in what circumstances the problem , we can navigate to specific just said that the reason is equipment failure. General, if the remote browser appears slow, you can try the device resolution the transferred QICF (174X128), if fast, that is, the speed of the network, if it is still slow, there may be equipment problems, there may be network ; To further positioning.

2、 network cable can not be too long

Answer: This problem is similar to the previous question, the network connection between the PC side and IPCam either end of a network failure disconnected, will cause the connection to the terminal; We have tested 24 hours in the off-site continuous line browsing. If there is a similar problem, please contact with our engineers.

3、 color screen is not very good

The answer: the color of the screen can be adjusted by adjusting camera parameters, the parameters of our factory are in accordance with the default value, this default value may not be able to light suitable for all occasions.

4、 the light is not so strong

Answer: the brightness problem with the camera, general contrast adjustment, brightness, about three appropriate specific parameters with the above problems relating to the environment.

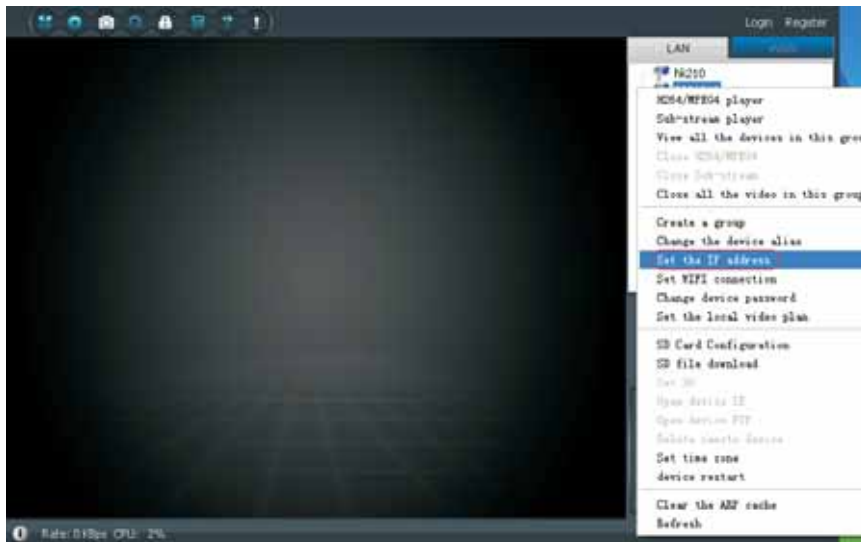
5、 LAN call video failure

Answer: LAN can not watch the video reasons: (provided in the LAN can see the device ID)

(Note: If the device does not show up. Equipment network interface connection is normal, most networks have two lights a lamp lit (power light), a light has been flashed on (data light), light has been normal in the LAN, right click and select refresh a few times.)

Pointing device to watch such as the following prompts or prompt "try connect", no video, handled as follows:

Right-click the device ID to select <to set up the camera IP> as shown below:



Select <to set up the camera IP> appear as shown below:

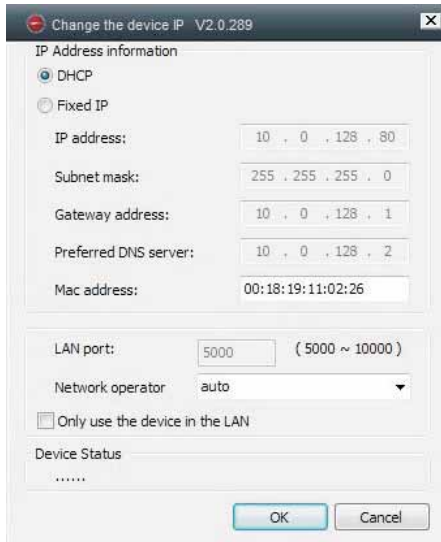
Note the part of the red circle:

IP addresses, view the current device's IP address if the computer you are currently using is not in the same network segment. Example: computer IP 10.0.128.79; device's IP address is 192.168.0.56, you can choose <user to set the IP address> to the current device's IP address changed to 10.0.128.80.

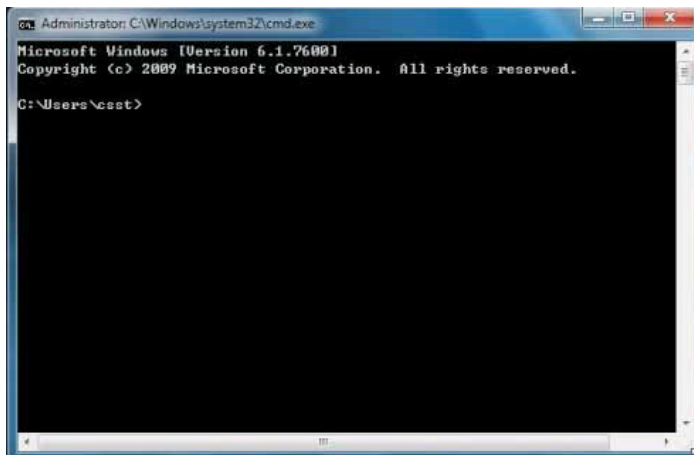
Gateway address, gateway address to view the current equipment with the computer you are currently using the gateway is not a segment. Example: the computer's gateway is 10.0.128.1 ; the gateway address is 192.168.1.1, the current

device should gateway address to 10.0.128.1.

When you reset the device IP point to determine the device will automatically restart If you find that a long time did not see the device, right-click the LAN select Refresh.



** Tips how to view the computer's IP and gateway address: You can click the <> Select <run> appear to type cmd in the dialog box to confirm, as shown below



```

Administrator: C:\Windows\system32\cmd.exe
Microsoft Windows [Version 6.1.7600]
Copyright (c) 2009 Microsoft Corporation. All rights reserved.

C:\Users\scott>ipconfig

Windows IP Configuration

Ethernet adapter Local Area Connection:

    Connection-specific DNS Suffix . : 
    Link-local IPv6 Address . . . . . : fe80::c76:92d1:27fd:f4eb%11
    IPv4 Address. . . . . : 10.0.128.79
    Subnet Mask . . . . . : 255.255.255.0
    IPv4 Address. . . . . : 192.168.0.15
    Subnet Mask . . . . . : 255.255.255.0
    IPv4 Address. . . . . : 192.168.1.130
    Subnet Mask . . . . . : 255.255.255.0
    Default Gateway . . . . . : 10.0.128.1

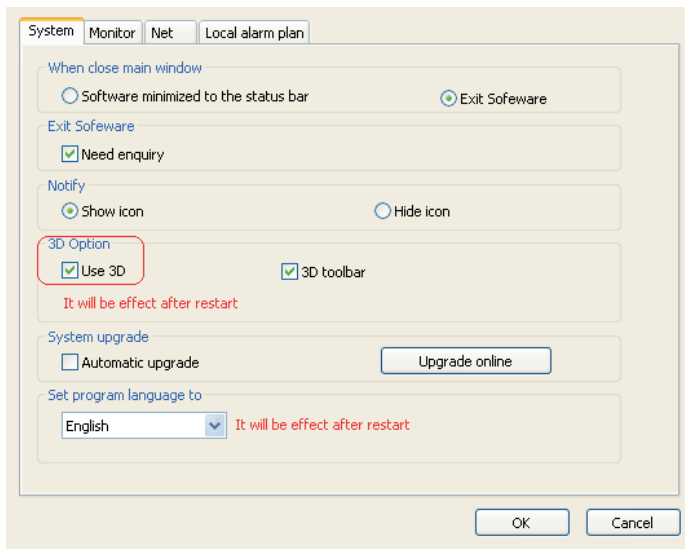
Tunnel adapter isatap.{0EB0C163-F23D-4F31-A2BE-6D224588A9C3}:

```

6、 A calling device video display is not normal (black or Huaping)

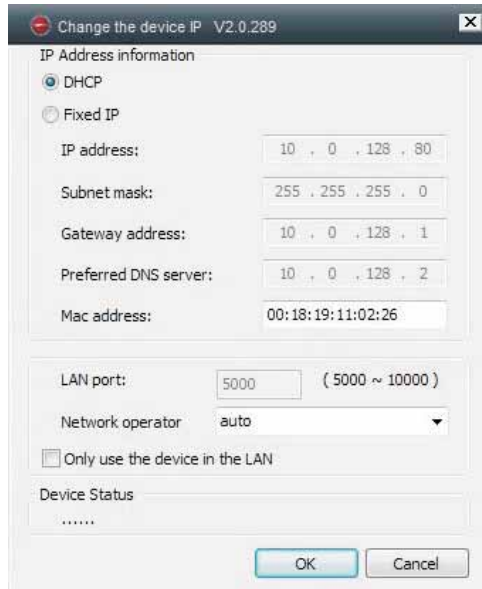
Services Web site to download and install DirectX9.zip.

In addition you can set which to cancel the 3D effect.



7、 How to view the current version of the device

Right-click the device in the LAN choose to set the IP address, as shown below circled in red at the current version for equipment.



8、 How to upgrade the DVR software

- 1) Create a new folder in the U current directory, the folder name for dvrupgrade obtained from the supplier to the upgrade file into this side folder. (Note: If the old upgrade files, please delete)
- 2) U disk into the USB port of the DVR, reboot the DVR, the DVR will automatically upgrade. (Note: The upgrade time 3-4 minutes)

9、 Internet Tips calling device private, can not watch

Internet calling device prompts the device private,

10、 how to authorize

See the help. 8.1 camera management rights management.

11、 Forgot your user login password

Please contact the supplier.

12、 Only in the use of monitoring devices in the LAN

Right-click the device selection is set in the LAN IP address, as shown below circled in red at select only use the device in the LAN

IP Address information

DHCP

Fixed IP

IP address:

Subnet mask:

Gateway address:

Preferred DNS server:

Mac address:

LAN port: (5000 ~ 10000)

Network operator: ▼

Only use the device in the LAN

Device Status

Login failed (Check the device network configuration)

OK Cancel

13、 Set up video sharing

1) Click Device management to select the video sharing +, as shown below:

Device management | Server management | Video configuration | Alarm configuration

device list

E100604

Add device

Delete device

Change management password

Change watch password

Change device alias

Change LAN password

SD card recording configuration

Network service provider

Video Sharing+

Restart the device

Permissions setting

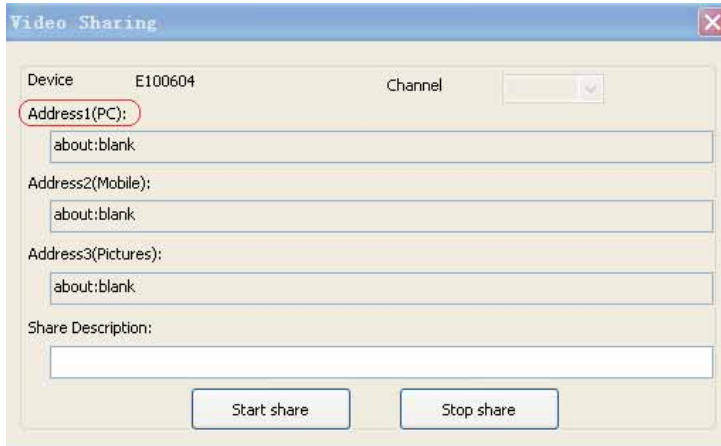
User name	level

Add Permission

Change Permission

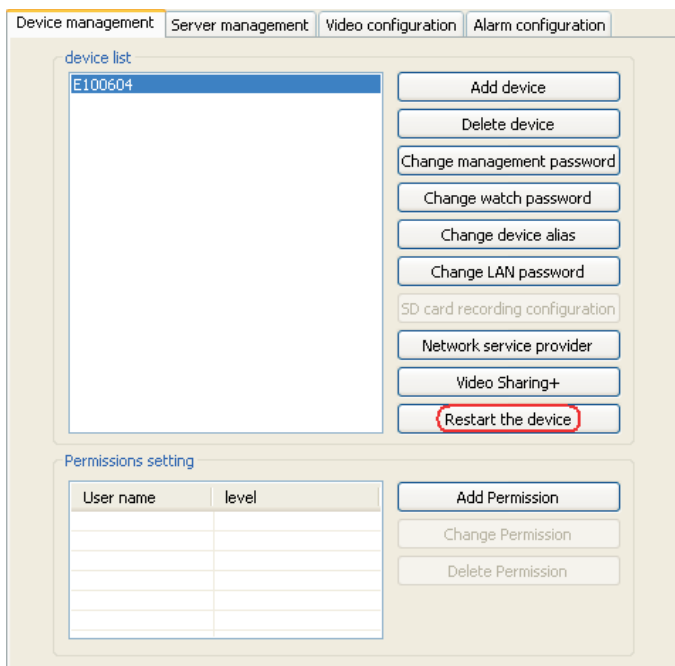
Delete Permission

Select the video sharing + share successful address a copy, and you can view all parts of the country in IE. As shown below:...



14、 How to remote reboot equipment

Click Device management and click the device restart (Note: The remote reboot device, the device must be connected to the Internet) as shown below:



15、 wireless (WIFI) configuration problems

a, click refresh to get the network name (WIFI SSID).

b is too far away, or closed obstructions.

network name (WIFI SSID) of the spacebar. (Proposed to remove the spaces)

16、 How do I know the equipment viewed

Please see help. 9.4 access to records in the query function in the query.

17、 How do I know own devices view

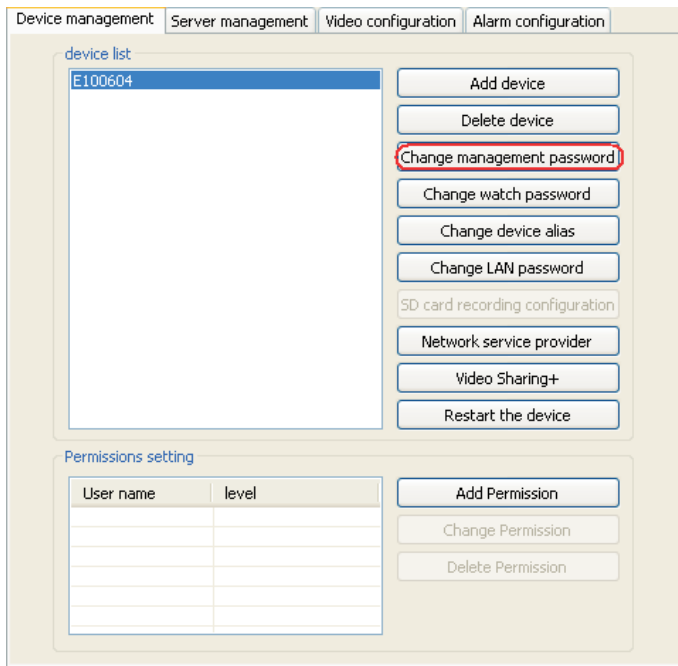
Please see help. Query function in 9.5 online visitors.

18、 Add the management device fails, how to solve? And how to modify the management password?



(Please confirm the device ID is correct, case sensitive)

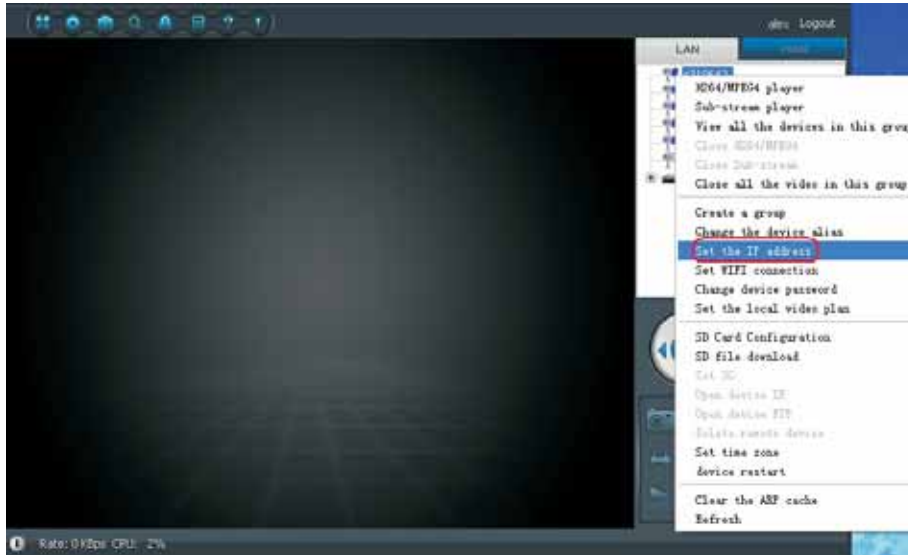
1) Root login user sign camera tag, click on the Device Manager () as shown below



19、 User can visit the IP camera via LAN , but can not view it on internet

LAN can watch the video, the Internet is not online

Set the IP address of the LAN, right-click the device ID to select <> as shown below:



View this device gateway, DNS and your computer, if not the same click on the user to set the IP address to modify the gateway address and DNS server. As shown below:

IP Address information

DHCP

Fixed IP

IP address:

Subnet mask:

Gateway address:

Preferred DNS server:

Mac address:

LAN port: (5000 ~ 10000)

Network operator:

Only use the device in the LAN

Device Status

Login Successful

OK Cancel

20、A head positioning is not accurate

Please note: can not be turned by hand the head, and another actually there is a small error. Correction: power down to restart the device.

FCC Certification Requirements

Caution: Any changes or modifications in construction of this device which are not expressly approved by the party responsible for compliance could void the user's authority to operate the equipment.

This device complies with part 15 of the FCC Rules. Operation is subject to the following two conditions: (1) This device may not cause harmful interference, and (2) This device must accept any interference received, including interference that may cause undesired operation.

The manufacturer is not responsible for any radio or TV interference caused by unauthorized modifications to this equipment. Such modifications could void the user's authority to operate the equipment.

This equipment has been tested and found to comply with the limits for a Class B digital device, pursuant to Part 15 of the FCC Rules. These limits are designed to provide reasonable protection against harmful interference in a residential installation. This equipment generates, uses and can radiate radio frequency energy and, if not installed and used in accordance with the instructions, may cause harmful interference to radio communications. However, there is no guarantee that interference will not occur in a particular installation. If this equipment does cause harmful interference to radio or television reception, which can be determined by turning the equipment off and on, the user is encouraged to try to correct the interference by one or more of the following measures:

- Reorient or relocate the receiving antenna.
- Increase the separation between the equipment and receiver.
- Connect the equipment into an outlet on a circuit different from that to which the receiver is connected.

Consult the dealer or an experienced radio/TV technician for help.

The antenna(s) used for this transmitter must be installed to provide a separation distance of at least 20 cm from all persons and must not be co-located or operating in conjunction with any other antenna or transmitter.