

Wireless LAN Card
WLI-PCM
User's Manual

Before Operation	1
Installation	2
Windows98/95 Settings	3
WindowsNT4.0 Settings	4
Installing Client Manager	5
Connection to Network	6
Troubleshooting	7
When You Want To...	8
Appendix	9

Thank you for purchasing MELCO INC.'s wireless LAN card (WLI-PCM). This manual describes precautions for handling of the wireless LAN card. Read this carefully before using the wireless LAN card to ensure correct operation.

Precautions for radio wave

- Never use the WLI-PCM near the magnetic field around a microwave oven or in an area where static electricity and/or radio noise is generated. The radio waves may not be transmitted in these areas.
 - * When the WLI-PCM is used near a wireless printer buffer (MELCO INC.'s RYP-G or similar products by other manufacturers) that use radio waves at around 2.4 GHz, the processing speed of both devices may be affected.
- As the WLI-PCM has been approved for conformity to the engineering standards, the following may be regarded unlawful.
 - Disassembling/remodeling the WLI-PCM
 - Removing the approval label attached to the rear of the WLI-PCM

- All rights for this manual are owned by MELCO INC. No part of this manual may be transmitted, reproduced, or revised without permission from MELCO INC.
- Product names of other companies used in this manual are trademarks or registered trademarks of the respective companies. Trademark symbols (™, ®, ©, etc.) are not indicated in this manual.
- Specifications, design, and other descriptions included in this manual are subject to change without notice.
- This manual is carefully prepared, however, feel free to contact your nearest sales representative if you have any questions or problems.
In addition, note that MELCO INC. shall not be liable for any expenses incurred due to damage or loss arising from the use of the WLI-PCM, although MELCO INC. has been advised of the possibility of such damage.



Be sure to follow the instructions given below for your safety.

Follow the instructions described here to avoid harming yourself, other people, and property, and to ensure safety. Be sure to read and understand them thoroughly before using this product. This manual contains instructions concerning general operation of the computer to which this product is connected as well as those concerning the product.




Please take note that our warranty will not cover any failures and problems of the computer, any losses and failures of data, or failures and problems of this product caused by misuse.







■ SIGNS AND SYMBOLS USED IN THIS MANUAL

Warning signs;

 WARNING	Failure to follow the instructions shown with this sign may result in a hazard or the serious injury of the user.
 CAUTION	Failure to follow the instructions shown with this sign may result in the injury of the user or property damage.

Symbols;

Specific instructions are given in or around , , and .

	This indicates warnings and cautions. (Ex.  , Exercise care to avoid an electric shock.)
	This indicates prohibited matters. (Ex.  , Do not disassemble.)
	This indicates compulsory rules. (EX.  , Disconnect the plug from the receptacle.)

WARNING



Turn off the power to the computer and peripheral devices immediately and unplug them if any liquid or foreign substance gets into the device.

Unplugging

If you continue using them under such circumstances, a short circuit resulting in a fire or an electric shock may occur.



Keep dry

Never use this product near water or in humid areas, such as a bathroom.

Failure to follow this instruction may cause fire, electric shock, and/or mechanical damage.



Compulsory

Adults knowledgeable about this product must attend and supervise children using the electrical appliances.



Compulsory

Keep the internal components, cables and connectors of the electrical appliances out of the reach of children.

Children may be injured if they touch them.



Compulsory

Be sure to observe instructions by manufacturers of personal computers and peripherals when installing and using this product.



No
disassembly

Do not disassemble or modify the product.

It may cause a fire or an electric shock.



Unplugging

Turn off the power to the computer and peripheral devices immediately and unplug them if smoke or an unpleasant smell is generated.

If you continue using them under such circumstances, a short circuit resulting in a fire or an electric shock may occur.



Unplugging

Turn off the power to the computer and peripheral devices immediately and unplug them if you drop the product or it receives a severe physical shock.

If you continue using them under such circumstances, a short circuit resulting in a fire or an electric shock may occur.



CAUTION



Prohibited

Never touch this product with wet hands.

It may cause an electric shock when the power plugs of personal computers and peripheral devices are connected to the AC outlet. If the plug is not connected, mechanical failure may occur.



Compulsory

Touch something made of metal (a door knob or aluminum window frame, for example) and release static electricity before touching the product to avoid damage caused by static electricity.

Static electricity generated from the human body may damage the product.



Compulsory

Back-up any important data on your computer (hard disk, etc.) onto appropriate media such as an MO disk or floppy disk before making any environment changes, for example, when installing/removing this product or installing the required software.

Having back-up data files can minimize the loss if the data on the personal computer is deleted or damaged due to incorrect operation or mechanical failure. Note that MELCO INC. shall not be liable for any damages due to loss or damage of digital data.



Be sure to create back-up files on other media (floppy disk, MO disk, etc.) for your data on the hard disk.

Compulsory

MELCO INC. recommends that you create two back-up copies of data before and after the original data is updated for any critical data. Data may be deleted or damaged when:

- Incorrect operation is performed.
- Data is affected by static electricity or electrical noise.
- Hardware is mechanically damaged or repaired.
- Your computer is turned on immediately after being turned off.
- The battery is expired because the device is not used for a long time.
- Hardware is damaged in a natural disaster.

Note that MELCO INC. shall not be liable for any damages arising from loss or damage of digital data in any cases.



Never turn off or reset the computer or other devices while accessing data storage devices such as the hard disk, MO drive, or floppy disk drive.

Prohibited

Doing so may delete or damage data. Note that MELCO INC. shall not be liable for any damages arising from loss or damage of digital data in any cases.



Never turn off or reset the computer or other devices while any software is running.

Prohibited

Doing so may delete or damage data. Note that MELCO INC. shall not be liable for any damages arising from loss or damage of digital data in any cases.



Prohibited

Do not place the product in the following areas.

Placing the product in the following areas will cause an electric shock, a fire or a failure.

- Area where strong magnetic fields are generated: It causes a failure.
- Area where static electricity is generated: It causes a failure.
- Unstable area: The unit may fall or drop and cause an injury or failure.
- Area where the temperature or humidity does not conform to the operation environment specified in the manual of the computer, or area where condensation occurs: It causes a failure.
- Area where the product is in direct sunlight: It causes a failure or deformation.
- Area in the proximity of fire or which contains hot air: It causes a failure or deformation.
- Area where a short circuit is likely to occur: It causes a failure or electric shock.

Table of Contents

1 Before Operation 8

Using this manual 8

Product outline 11

Contents of package and section names 13

Setup flow 14

2 Installation 15

Before installing the WLI-PCM 16

Installing the WLI-PCM 21

3 Windows98/95 Settings 24

Check before installation 24

Driver installation 26

Checking after installation 40

Removing the WLI-PCM 47

Uninstalling the driver 48

Preparing for connection to network 49

4 WindowsNT4.0 Settings 60

Driver installation 60

Changing settings 70

Checking after installation 72

Installing the ESS ID Driver 73

Preparing for connection to network 76

5 Installing Client Manager 79

Installation 79

Uninstallation 82

6 Connection to Network 83

Connection to network 83

Checking connection to network 91

Connection to other computers 97

7 Troubleshooting 99

8 When You Want To... 112

Change target access point 112

Check connection using PING command 114

Assign IP address 115

Check MAC address 116

9 Appendix 118

Terminology 118

Product specifications 123

1

Before Operation


This chapter contains important information you should fully understand before starting operation. Be sure to carefully read the following pages.

Using this manual


This manual is created according to the following editorial points. Please remember these points when using this manual.

■ Editorial points


CAUTION mark

 **Caution** Describes cautions when handling the WLI-PCM. If these instructions are not observed, injuries or mechanical damage may occur.

NOTE mark

 **Note** Describes supplementary information or items which should be understood when handling the WLI-PCM.

REFERENCE mark

 **Reference** Indicates page(s) containing related information.

NEXT mark

 **Next** Indicates page(s) containing the next step is described.

COLUMN mark



Provides convenient tips.

■ Terminology

- Descriptions enclosed by double quotation marks " " are software or dialog box names.
- This product (Wireless LAN Card WLI-PCM) is generally referred to as "the WLI-PCM".
- A computer equipped with the WLI-PCM is generally referred to as the "wireless LAN PC".

Continued on next page

- All operation procedures are described assuming the following drive configuration.
 A: 3.5-inch floppy disk drive
 C: Hard disk drive
 D: CD-ROM drive

■ Handling precautions

The WLI-PCM is a high-precision device. Be sure to read this manual carefully to ensure correct operation.

MELCO INC. shall not be liable for any failures or problems of the computer, or any failures and problems of the access point caused by misuse.

Wired LAN and wireless LAN

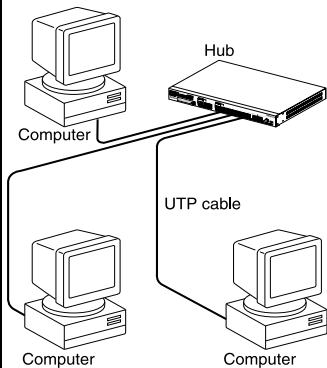
The following terms are used in this manual to distinguish between a 10BASE-T/100BASE-TX LAN connected by cables and a LAN using no cables.

Wired LAN LAN connected by cables

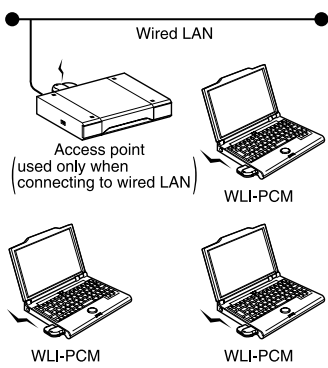
Wireless LAN LAN using wireless communication

Note that these are not general terms and are used only for descriptions in this manual.

Typical configuration of a wired LAN



Typical configuration of a wireless LAN



Continued on next page

ESS-ID

The ESS-ID is an identification code required for communication in a wireless LAN.

The same ESS-ID must be set to the access point and the wireless LAN PC to enable communication.

Note The ESS-ID is upper/lower case sensitive and can consist of up to 32 alphanumeric characters including the under bar (_). The factory default ESS-ID for the WLI-PCM is "RoamLAN".

The factory default is effective when using the WLI-PCM in a network consisting of only wireless LAN PC's, however, this may allow unauthorized access by an external computer equipped with the same model LAN card. We recommend that you change the ESS-ID to your own personal ID.

DS channel

Select the DS channel from channels A, B, or C.

Selecting a channel sets the frequency used to transfer data.

Note The target access point and the wireless LAN PC must be set to the same DS channel to enable access.

Product outline

Features and operating environment of the WLI-PCM are described below.

■ Features

The WLI-PCM is a wireless LAN card for use in computers equipped with a PC card slot (type II).

The main features are listed below.

- 2.4 GHz low power data communication system (certification not required).
- Direct sequence spread spectrum (DS-SS) technology ensures high noise resistance.
- Diversity antenna (2 built-in antennas, with data received by the more sensitive of these).
- IEEE802.11 compliant, with a data rate of 2 Mbps even on a wireless LAN.
- Effective range of 150 ft indoors or 450 ft outdoors (may vary depending on operating environment).
- ESS ID prevents unauthorized access.

Continued on next page

Wireless LAN network configuration

Network configurations for wireless LANs can be classified into two main groups.

- Wireless LAN only network
- Wired and wireless LAN network

Typical configurations of each type are described below.

■ Wireless LAN only network

One wireless LAN card is required for each computer. All LAN cards must have the same ESS-ID to enable communication.

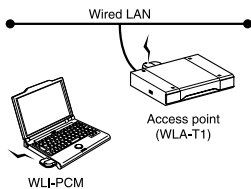
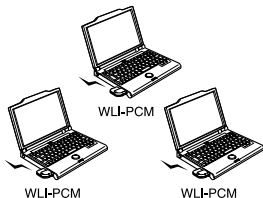
Note The factory default ESS-ID can be used, however, we recommend that you change the default to ensure security.

Reference Refer to "ESS-ID" on page 10 for details.

■ Wired and wireless LAN network

MELCO INC.'s access point WLA-T1 (provided separately) is required to connect a wireless LAN to a wired LAN. Computers on the wireless LAN communicate with those on the wired LAN via the access point.

Caution Access is only possible when the wireless LAN is configured using MELCO INC.'s wireless LAN products (Access Point WLA-T1, Wireless LAN ISA Bus Board WLI-ISA, and WLI-PCM).



■ Operating environment

IBM AT compatible computer equipped with a PC card slot (type II)

Operating system

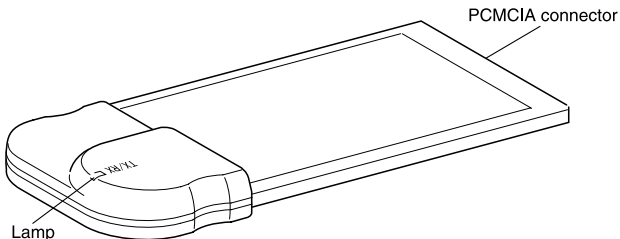
Windows 98/95, WindowsNT4.0

* The ACPI feature in Windows98 is not supported.

Contents of package and section names

The items listed below are included in the package. Please check the package and contact your nearest sales representative if any items are missing.

WLI-PCM 1



Name	Function
PCMCIA connector	Terminal connected to the PCMCIA slot of the computer. Never touch the terminal with your bare hands. Touching the terminal may cause a malfunction.
Lamp	Lights green or red when sending or receiving data respectively.

LAN Card Utility for WLI-PCM disk (3.5" floppy disk)..... 1

User's Manual (this manual) 1

Note Be sure to read any additional information sheets provided in the package.

Disk back-up

Be sure to back-up the "LAN Card Utility for WLI-PCM" disk, and use the back-up disk to install the utility.

Setup flow

Follow the procedures below to connect the WLI-PCM. Read the entire operation flow carefully and understand it before starting setup.

Read this manual carefully.

1 Check contents of package. Page 13

2 Install WLI-PCM to computer. Page 15

3 Install appropriate driver. Page 26 / Page 60

Windows98/95 Page26

WindowsNT4.0 Page60

4 Install Client Manager. Page 76

5 Connection to network. Page 80

If any problem occurs, refer to "Troubleshooting". Page 96

Setup completed.

2

Installation

This chapter describes the procedure to insert the WLI-PCM into your computer. If you are using Windows98/95, check that the 32-bit PC card driver is installed.

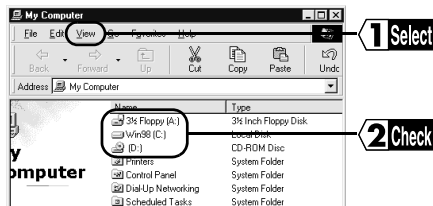


Drive configuration

Check the drive configuration of your computer before installing the driver.

1 Double-click the My Computer icon.

2 Select View → Details.



Check the drive names listed in the window.

Note the drive names listed here. These will be required in the following steps.

e.g. The drive configuration for the example screen shown above

A: Floppy disk drive

C: Hard disk drive

D: CD-ROM drive

Next

When using Windows98/95, go to "Before installing the WLI-PCM" on page 16.

When using WindowsNT4.0, go to "Installing the WLI-PCM" on page 21.

Before installing the WLI-PCM

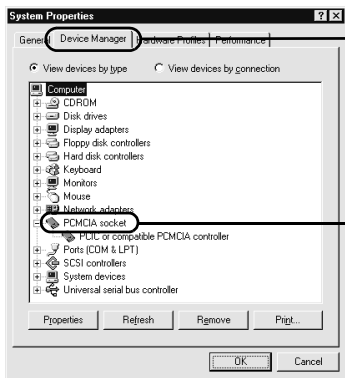
When you are using Windows98/95, be sure to check that the 32-bit PC card driver is correctly installed before inserting the WLI-PCM into the computer.

Checking 32-bit PC card driver

The 32-bit PC card driver must be installed in order to install the WLI-PCM driver. Follow the procedure below to check that the 32-bit PC card driver is installed.

The procedure described below is for Windows98. Note that different windows appear for Windows95.

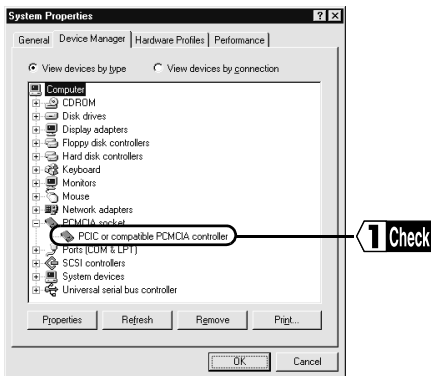
- 1 Click the Start button and select Settings → Control Panel.
- 2 Double-click the System icon.
- 3 Click the Device Manager tab and then the + mark on the left of "PCMCIA socket".



Note The device names listed for "PCMCIA socket" vary on some computers.

Continued on next page

- 4 Check that no marks indicating a problem ("!" or "X") are displayed for any of the devices listed for "PCMCIA socket".



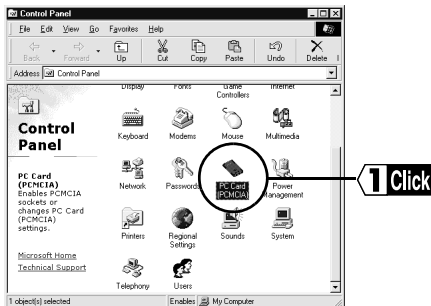
Next

If an error mark is displayed, go to "Troubleshooting for PC card driver" on page 18.

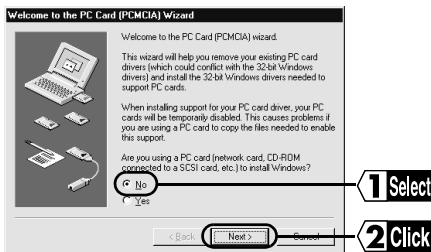
If no error marks are displayed, go to "Installing the WLI-PCM" on page 21.

Troubleshooting for PC card driver

- 1 If an error mark ("!" or "X") is displayed for any of the devices listed for "PCM-CIA socket" in the "System Properties" dialog box, double-click the PC Card icon in the Control Panel window.

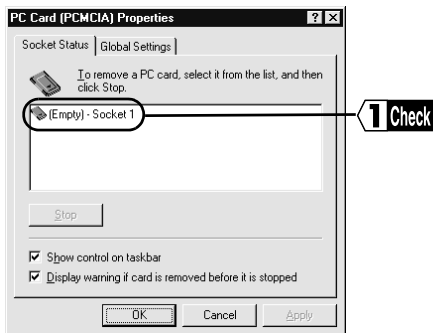


- 2 Select No and click the Next button.



Continued on next page

The following screen (PC Card (PCMCIA) Properties window) may appear instead of the screen shown in step 2 (PC card (PCMCIA) Wizard). In this case, follow the steps below.



Check the status of the sockets.

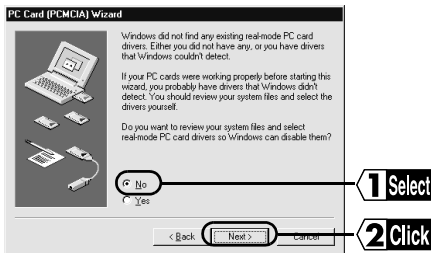
- The "Empty" socket is available.

Next Go to "Installing the WLI-PCM" on page 21.

- Sockets without an "Empty" mark cannot be used.

Next Refer to the instruction manual for your computer or consult the manufacturer.

3 Select No and click the Next button.



Continued on next page

4 Click the Finish button.

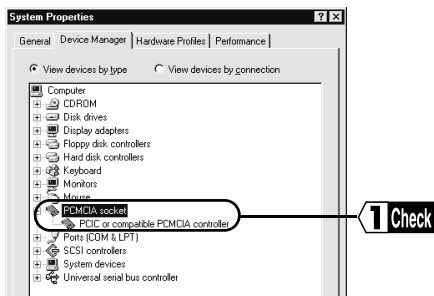


5 Click the Yes button.



The 32-bit card driver can be installed after the computer is restarted.

6 Check the PC card driver, following the steps described in "Checking 32-bit PC card driver" on page 16.



If the PC card driver cannot be installed, refer to the instruction manual for your computer or consult the manufacturer.


Next Go to "Installing the WLI-PCM" on page 21.

Installing the WLI-PCM

The installation position varies depending on the model of your computer. Be sure to refer to the manual provided by the manufacturer

■ Precautions before installing the LAN card

If your computer is equipped with a power management function that automatically cuts power supply to the computer when it is left idle for a certain period, turn the function off. The WLI-PCM cannot be used if the power management function starts.


 **Reference** Refer to the manual provided for the computer for details on the power management function.

■ Precautions when installing the LAN card

- Be sure to follow the handling instructions in the manuals provided with your computer and peripheral equipment.
- Remove dust from connectors.
- Never touch the connectors of the WLI-PCM.
- Carefully check the direction of the connectors when installing the WLI-PCM to your computer. The connector may be damaged if it is forced.

■ Precautions when removing the LAN card

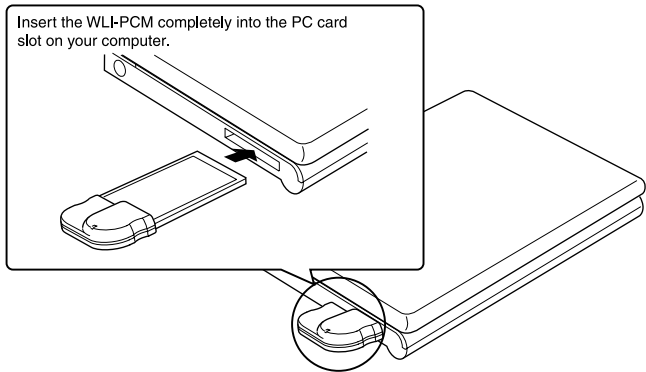
The LAN card can be inserted and removed with the computer turned on, provided Windows98/95 is running. Refer to "Removing the WLI-PCM" on page 47.

 **Next** When installing the WLI-PCM to a notebook computer, go to "Installation to a notebook computer" on page 22.

Installation to a notebook computer

Follow the steps below when installing the WLI-PCM to a notebook computer.

Note When using Windows98/95, the WLI-PCM can be installed and removed with the computer turned on. However, be sure to turn the computer off when using WindowsNT4.0.



When your computer is equipped with two card slots

As the WLI-PCM has a protruding section for the built-in antenna, the upper slot may be blocked when the lower one is occupied with the WLI-PCM. Place the WLI-PCM in the upper slot.

Next

When using Windows98/95, go to "Windows98/95 Settings" on page 24.

When using WindowsNT4.0, go to "WindowsNT4.0 Settings" on page 60.

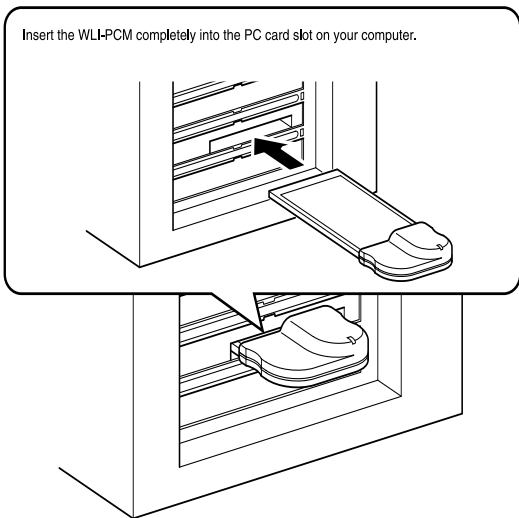
Installation to a desktop computer (when using WLI-ISA)

The PCMCIA/ISA board included with the WLI-ISA must be installed in a desktop computer before installing the WLI-PCM.

Reference Refer to "WLI-ISA Install Guide" included with the WLI-ISA for installation procedures for the PCMCIA/ISA board.

Note When using Windows98/95, the WLI-PCM can be installed and removed with the computer turned on. However, be sure to turn the computer off when using WindowsNT4.0.

Refer to the illustration below to install the WLI-PCM to a desktop computer.



Caution Avoid any impact or force on the antenna section. This may affect operation of the WLI-PCM.

Next

When using Windows98/95, go to "Windows98/95 Settings" on page 24.

When using WindowsNT4.0, go to "WindowsNT4.0 Settings" on page 60.

3

Windows98/95 Settings

This chapter describes the setting procedures for the WLI-PCM when using Windows98/95.

Check before installation

Caution Be sure to check that the WLI-PCM is inserted correctly before installing the driver.

The following window appears when the WLI-PCM is inserted correctly.

Note Turn the computer on if it is off.

Windows98

The Add New Hardware Wizard appears on the screen.



Next Go to "Windows98" on page 26.

Caution If the above wizard does not appear, refer to "Add New Hardware Wizard does not appear when the WLI-PCM is inserted (Windows98/95). Or, an error mark "!" appears next to "MELCO WLI-PCM 802.11 Network Adapter"." on page 100.

Continued on next page

Windows95

Different screens may appear depending on the version of Windows95. Work through the wizard windows displayed when Windows95 starts.

When Update Device Driver Wizard appears



The above window appears for version "4.00.950 B" or "4.00.950 C".

Next Go to "When using Windows95 version 4.00.950 B or 4.00.950 C" on page 31.

Caution If the above wizard does not appear, refer to "Add New Hardware Wizard does not appear when the WLI-PCM is inserted (Windows98/95). Or, an error mark "!" appears next to "MELCO WLI-PCM 802.11 Network Adapter"." on page 100.

When New Hardware Found window appears



The above window appears for version "4.00.950" or "4.00.950a".

Next Go to "When using Windows95 version 4.00.950 or 4.00.950a" on page 36.

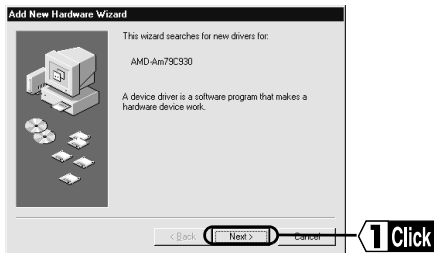
Caution If the above wizard does not appear, refer to "Add New Hardware Wizard does not appear when the WLI-PCM is inserted (Windows98/95). Or, an error mark "!" appears next to "MELCO WLI-PCM 802.11 Network Adapter"." on page 100.

Driver installation

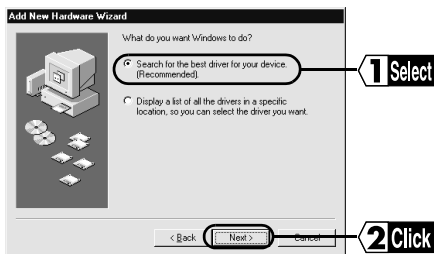
Work through the messages displayed by the Add New Hardware Wizard (page 24) to install the driver.

Windows98

- 1 Click the Next button.



- 2 Select "Search for the best driver for your device. (Recommended)." and click the Next button.



- 3 Insert the "LAN Card Utility for WLI-PCM" disk into the floppy disk drive.

Continued on next page

4 Select "Floppy disk drives" and click the Next button.

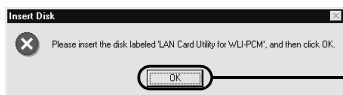


5 Click the Next button.



Follow the steps below if requested to insert the "LAN Card Utility for WLI-PCM" disk.

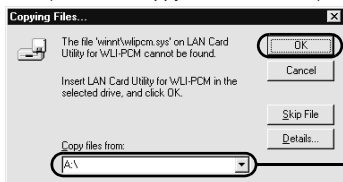
Click the OK button.



1 Click

Note The error message "The file winnt\wlipcm.sys' on LAN Card Utility for WLI-PCM cannot be found" appears.

Change "C:\WINDOWS\CATROOT" shown in the "Copy files from:" field to "A:\" (when the floppy disk drive is "A") and click the OK button.



2 Click

1 Enter

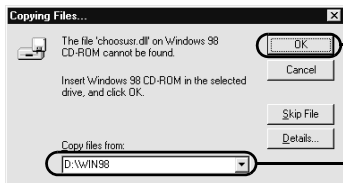
A window prompting you to insert the Windows98 CD-ROM may appear. Follow the steps below before proceeding to step 6.

Set the Windows98 CD-ROM in the CD-ROM drive and click the OK button.



1 Click

Enter "D:\WIN98" (when CD-ROM drive is "D") and click the OK button.



2 Click

1 Enter

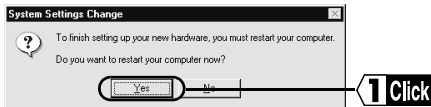
Continued on next page

6 Click the Finish button.



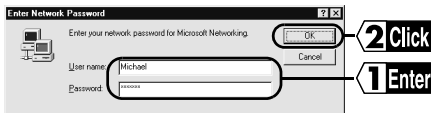
7 Eject the "LAN Card Utility for WLI-PCM" disk from the floppy disk drive.

8 Click the Yes button.



9 The computer restarts.

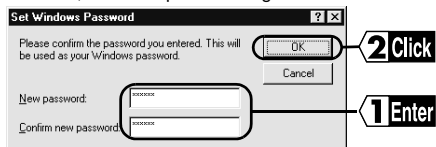
10 Enter your user name and password, and click the OK button.



This completes driver installation.
Check that the WLI-PCM is operating correctly.

Continued on next page

The Set Windows Password window may appear when you click the OK button on the Enter Windows Password window. If it does, enter the password again and click the OK button.



Note If the error message "The DHCP client could not obtain an IP address" appears, consult the network administrator and set the IP address.

Next Go to "When using Windows98 or Windows95 version 4.00.950 B / 4.00.950 C" on page 40.

When using Windows95 version 4.00.950 B or 4.00.950 C

- 1 Insert the “LAN Card Utility for WLI-PCM” disk into the floppy disk drive.
- 2 Click the Next button.



3

Windows98/95 Settings

- 3 Click the Finish button.

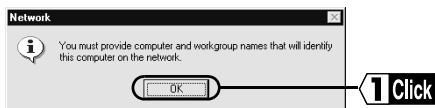


Continued on next page

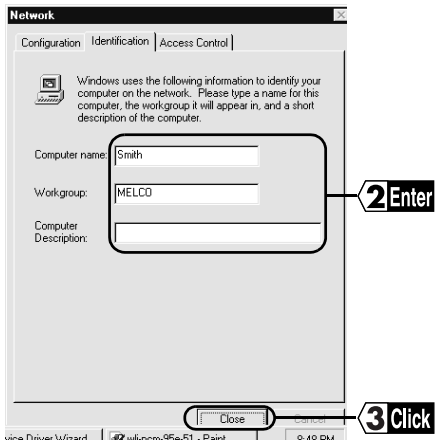
The following Network window may appear when you click the Finish button.

Follow the steps below before proceeding to step 4.

Click the OK button.



Enter the Computer name, Workgroup, and Computer Description, and click the Close button.



Reference Refer to "Identification window of Windows98/95" on page 121, for details of the computer name, workgroup, and computer description

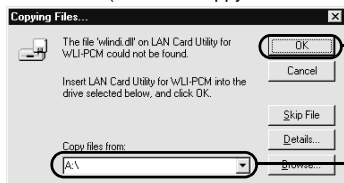
Continued on next page

Follow the steps below if requested to insert the "LAN Card Utility for WLI-PCM" disk.



Note The error message "The file winnt\wlipcm.sys' on LAN Card Utility for WLI-PCM cannot be found" appears.

Change "C:\WINDOWS\OPTIONS\CABS" shown in the "Copy files from:" field to "A:\\" (when the floppy disk drive is "A") and click the OK button.

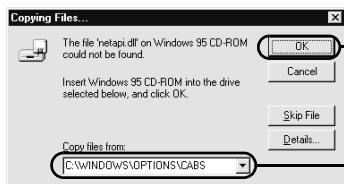


A screen prompting you to insert the Windows95 CD-ROM may appear. Follow the steps below before proceeding to step 4.

Set the Windows95 CD-ROM in the CD-ROM drive and click the OK button.

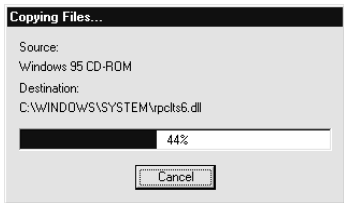


Change "A:\\" shown in the "Copy files from:" field to "C:\WINDOWS\OPTIONS\CABS" (when Windows95 is installed on "C") and click the OK button.



Continued on next page

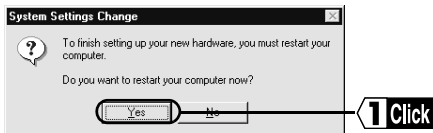
4 Files are copied.



Note Dialog boxes may appear to notify you of the version of the files being copied. Click the Yes button to use the existing file.

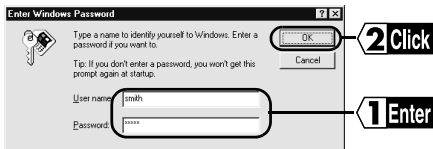
5 Eject the “LAN Card Utility for WLI-PCM” disk from the floppy disk drive.

6 Click the Yes button.



7 Windows95 restarts.

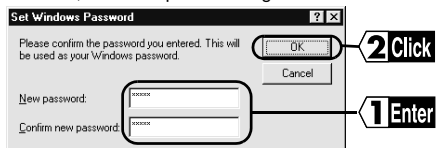
8 Enter your user name and password, and click the OK button.



This completes driver installation.
Check that the WLI-PCM is operating correctly.

Continued on next page

The Set Windows Password window may appear when you click the OK button on the Enter Windows Password window. If it does, enter the password again and click the OK button.

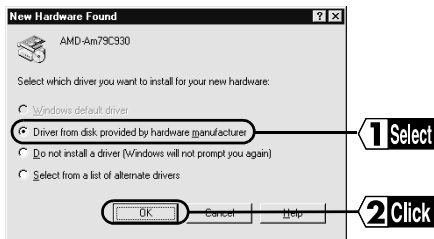


Note If the error message "The DHCP client could not obtain an IP address" appears, consult the network administrator and set the IP address.

Next Go to "When using Windows98 or Windows95 version 4.00.950 B / 4.00.950 C" on page 40.

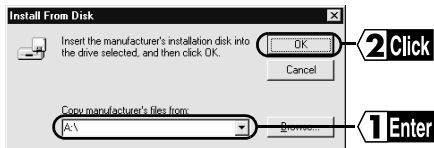
When using Windows95 version 4.00.950 or 4.00.950a

- 1 Select "Driver from disk provided by hardware manufacturer" and click the OK button.



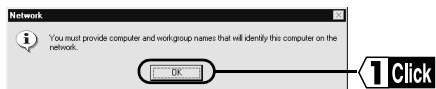
- 2 Insert the "LAN Card Utility for WLI-PCM" disk into the floppy disk driver.

- 3 Enter "A:\\" (when floppy disk drive is "A") and click the OK button.

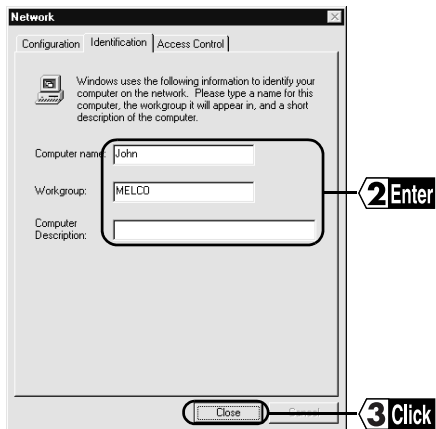



Continued on next page

The following Network window may appear when you click the OK button. Follow the steps below before proceeding to step 4. Click the OK button.



Enter the Computer name, Workgroup, and Computer Description, and click the Close button.

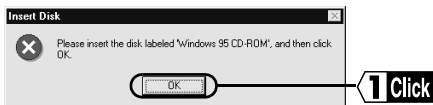


 **Reference** Refer to "Identification window of Windows98/95" on page 121, for details of the computer name, workgroup, and computer description.

- 4 A message prompting you to insert the Windows95 CD-ROM or floppy disk appears.

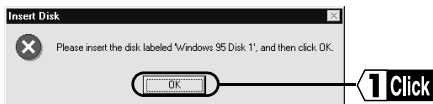
CD-ROM

Insert the Windows95 CD-ROM into the CD-ROM drive and click the OK button.



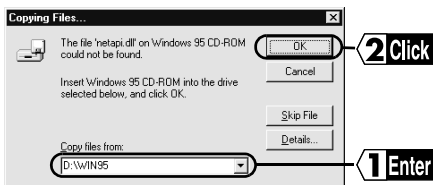
Floppy disk

Insert the designated floppy disk into the floppy disk drive and click the OK button.



Note Insert the appropriate floppy disk as instructed by each screen.

- 5 Change "A:\:" shown in the "Copy files from:" field to "D:\WIN95" (when the CD-ROM drive is "D") and click the OK button.

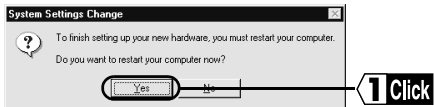


Note If Windows95 is pre-installed and the computer does not have a CD-ROM drive, enter "C:\WINDOWS\OPTIONS\CABS" (when Windows95 is installed on the C drive).

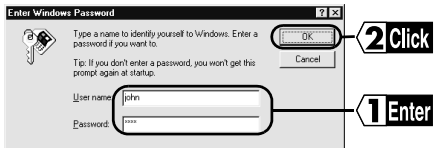
- 6 Eject the "LAN Card Utility for WLI-PCM" disk from the floppy disk drive.

Continued on next page

7 Click the Yes button and restart Windows95.

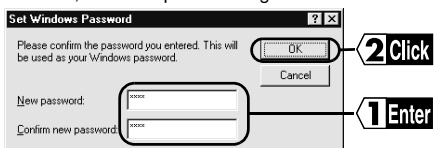


8 Enter your user name and password, and click the OK button.



This completes driver installation.
Check that the WLI-PCM is operating correctly.

The Set Windows Password window may appear when you click the OK button on the Enter Windows Password window. If it does, enter the password again and click the OK button.



Note If the error message "The DHCP client could not obtain an IP address" appears, consult the network administrator and set the IP address.

Next Go to "When using Windows95 version 4.00.950 or 4.00.950a" on page 36.

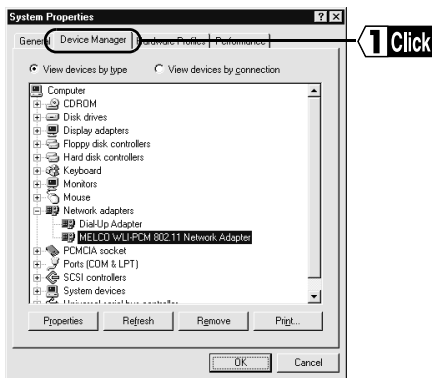
Checking after installation

After installing the driver, follow the steps below to check that the WLI-PCM is operating correctly.

Note Different screens may appear after installation depending on the version of Windows95.

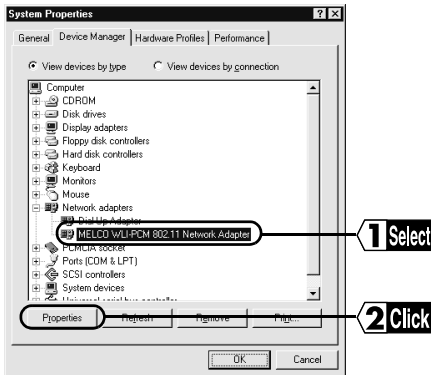
When using Windows98 or Windows95 version 4.00.950 B / 4.00.950 C

- 1 Click the Start button and select Settings → Control Panel.
- 2 Double-click the System icon.
- 3 Click the Device Manager tab.



Continued on next page

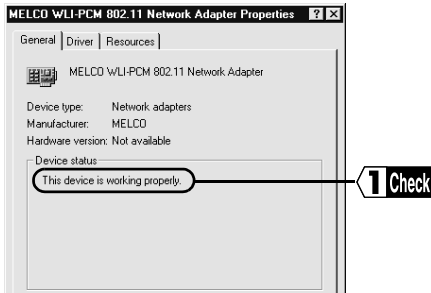
- 4 Select "MELCO WLI-PCM 802.11 Network Adapter" and click the Properties button.



Note

- If "MELCO WLI-PCM 802.11 Network Adapter" is not listed, click the + mark on the left of "Network adapters".
- "PCMCIA card service" may be included in "Other devices", however, this does not imply any problem.

- 5 Check that the message "This device is working properly" is displayed for Device status.



Caution If the above message is not displayed, the WLI-PCM is not operating correctly. Uninstall and re-install the driver, referring to "Add New Hardware Wizard does not appear when the WLI-PCM is inserted (Windows98/95). Or, an error mark "!" appears next to "MELCO WLI-PCM 802.11 Network Adapter"." on page 100.

Continued on next page

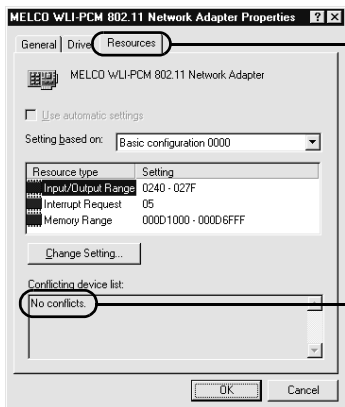
6 Click the Driver tab.



1 Click

Note When using Windows95, the message "The driver file is not required or installed for this device" appears. However, this does not imply any problem.

7 Click the Resource tab and check that "No conflicts." is displayed in the Conflicting device list.

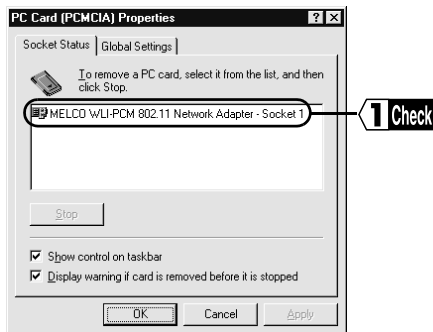


1 Click

2 Check

Continued on next page

- 8 Click the Start button and select Settings → Control Panel.
- 9 Double-click the PC Card (PCMCIA) icon.
- 10 Check that "MELCO WLI-PCM 802.11 Network Adapter" is displayed for Socket Status.



Caution When the above message does not appear, the WLI-PCM is not operating correctly. Refer to "Add New Hardware Wizard does not appear when the WLI-PCM is inserted (Windows98/95). Or, an error mark "!" appears next to "MELCO WLI-PCM 802.11 Network Adapter"." on page 100.

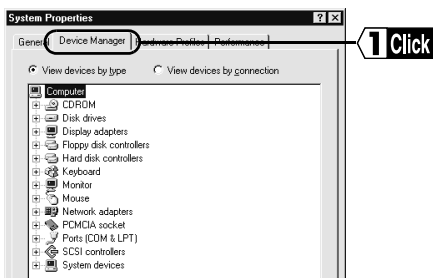
Next

When the WLI-PCM is operating correctly, go to "Preparing for connection to network" on page 49.

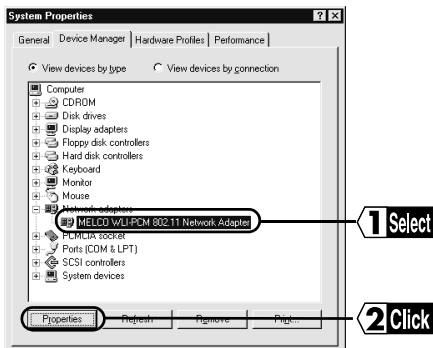
When the WLI-PCM is not operating correctly, go to "Add New Hardware Wizard does not appear when the WLI-PCM is inserted (Windows98/95). Or, an error mark "!" appears next to "MELCO WLI-PCM 802.11 Network Adapter"." on page 100.

When using Windows95 version 4.00.950 or 4.00.950a

- 1 Click the Start button and select Settings → Control Panel.
- 2 Double-click the System icon.
- 3 Click the Device Manager tab.



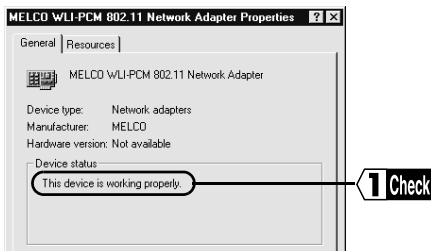
- 4 Select "MELCO WLI-PCM 802.11 Network Adapter" and click the Properties button.



Note If "MELCO WLI-PCM 802.11 Network Adapter" is not listed, click the + mark on the left of "Network adapters".

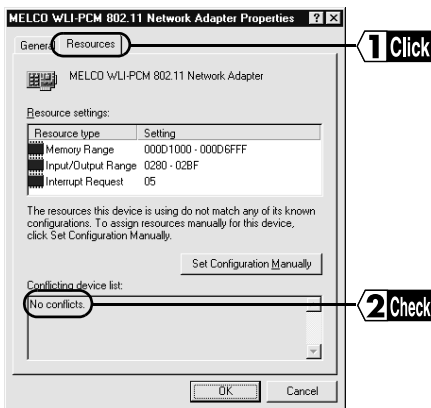
Continued on next page

- 5 Check that the message "This device is working properly" is displayed for Device status.



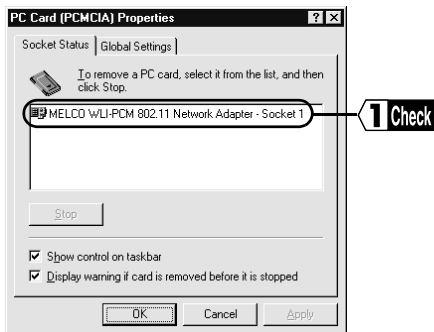
Caution If the above message is not displayed, the WLI-PCM is not operating correctly. Uninstall and re-install the driver, referring to "Add New Hardware Wizard does not appear when the WLI-PCM is inserted (Windows98/95). Or, an error mark "!" appears next to "MELCO WLI-PCM 802.11 Network Adapter." on page 100.

- 6 Click the Resources tab.
Check that "No conflicts." is displayed in the Conflicting device list.



Continued on next page

- 7 Click the Start button and select Settings → Control Panel.
- 8 Double-click the PC Card (PCMCIA) icon.
- 9 Check that "MELCO WLI-PCM 802.11 Network Adapter" is displayed for Socket Status.



Caution When the above message does not appear, the WLI-PCM is not operating correctly. Uninstall and re-install the driver, referring to "Add New Hardware Wizard does not appear when the WLI-PCM is inserted (Windows98/95). Or, an error mark "!" appears next to "MELCO WLI-PCM 802.11 Network Adapter"." on page 100.

Next

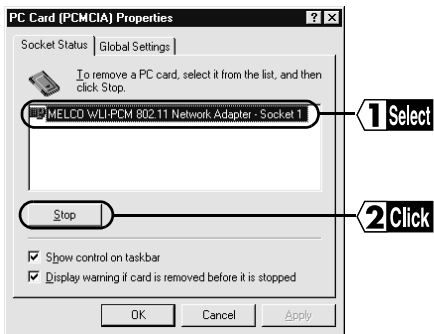
When the WLI-PCM is operating correctly, go to "Preparing for connection to network" on page 49.

When the WLI-PCM is not operating correctly, go to "Add New Hardware Wizard does not appear when the WLI-PCM is inserted (Windows98/95). Or, an error mark "!" appears next to "MELCO WLI-PCM 802.11 Network Adapter"." on page 100.

Removing the WLI-PCM

Follow the steps below to remove the WLI-PCM while Windows98/95 is running.

- 1 Click the Start button and select Settings → Control Panel.
- 2 Double-click the PC Card (PCMCIA) icon.
- 3 Select "MELCO WLI-PCM 802.11 Network Adapter" and click the Stop (Windows98) or Finish (Windows95) button.



- 4 When the following dialog box appears, click the OK button.

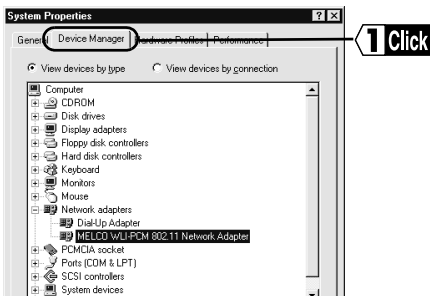


- 5 Remove the WLI-PCM.

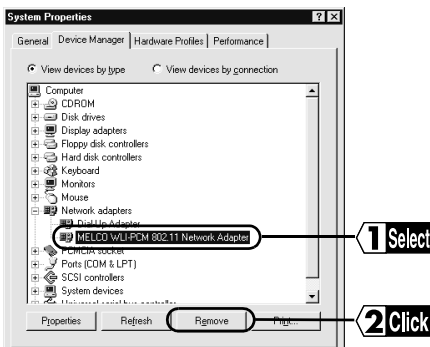
Uninstalling the driver

Follow the steps below to uninstall the driver.

- 1 Click the Start button and select Settings → Control Panel.
- 2 Double-click the System icon.
- 3 Click the Device Manager tab.




- 4 Select "MELCO WLI-PCM 802.11 Network Adapter" and click the Remove button.



Note If "MELCO WLI-PCM 802.11 Network Adapter" is not listed, click the + mark on the left of "Network adapters".

Preparing for connection to network

After checking that the WLI-PCM is operating correctly, you can try connecting to the network. Refer to the procedure below to make the required settings for the computer to be connected. Screens from Windows98 are used in this example.

 **Reference** Refer to the manual provided for Windows98/95 for details.

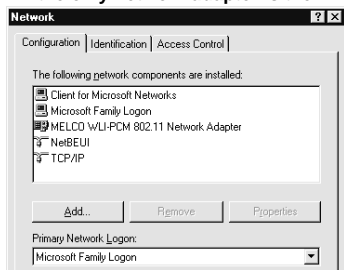
The following is required for all computers.

- Check NetBEUI, TCP/IP, and Microsoft Network Client
- Add File and printer sharing for Microsoft Networks
- Check computer name and workgroup name
- Set sharing
- TCP/IP setting

Checking NetBEUI, TCP/IP, and Microsoft Network Client

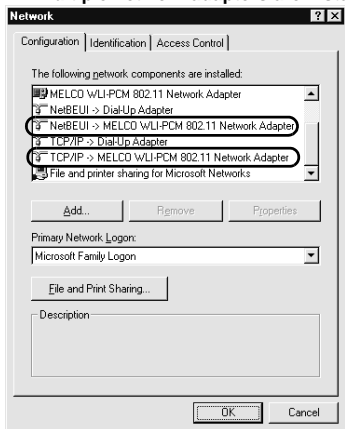
- 1 Click the Start button and select Settings → Control Panel.
- 2 Double-click the Network icon.
- 3 Check that "NetBEUI", "TCP/IP", and "Microsoft Network Client" are listed in "The following network components are installed:". When using Windows98, check that "Microsoft Network Client" is selected for Primary Network Logon.

■ If the only network adapter is the WLI-PCM



Continued on next page

■ If multiple network adapters are installed



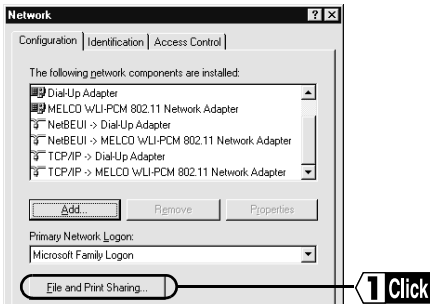
"NetBEUI -> MELCO WLI-PCM 802.11 Network Adapter" and "TCP/IP -> MELCO WLI-PCM 802.11 Network Adapter" appear in "The following network components are installed:". However, this does not imply any problem.

Caution When the network adapters are not listed as shown above add Microsoft Network Client, NetBEUI, and TCP/IP, referring to "Adding Microsoft Network Client (page 57)", "Adding NetBEUI (page 58), and "Adding TCP/IP (page 59).

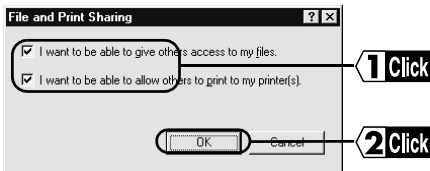
Next Go to "Adding File and printer sharing for Microsoft Networks" on page 51.

Adding File and printer sharing for Microsoft Networks

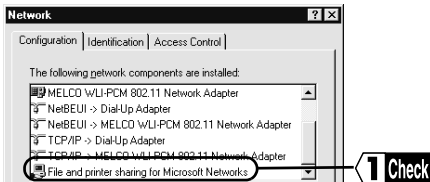
- 1 Click the File and Print Sharing... button.



- 2 Check "I want to be able to give others access to my files" and "I want to be able to allow others to print to my printer(s)", and click the OK button.



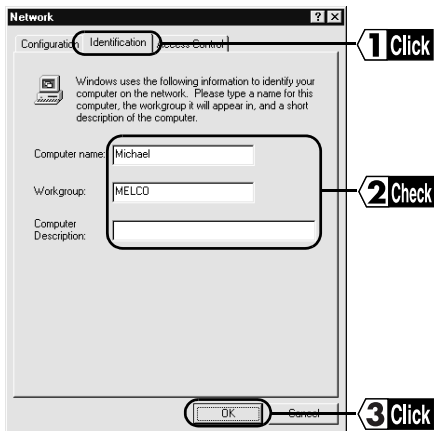
- 3 File and printer sharing for Microsoft Networks is added.



Next Go to "Checking computer name and workgroup name" on page 52.

Checking computer name and workgroup name

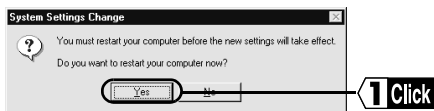
- 1 Click the Identification tab (Windows98) or User Information tab (Windows95). Check the Computer name, Workgroup, and Computer Description, and click the OK button.



Caution The same workgroup must be assigned to all the computers included in the network.

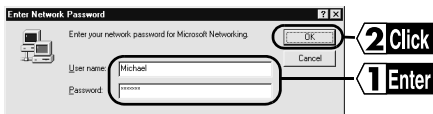
Reference Refer to "Identification window of Windows98/95" on page 121, for details of the computer name, workgroup, and computer description.

- 2 Click the Yes button to restart Windows98/95. The Enter Network Password window appears.



Continued on next page

- 3 Enter your user name and password, and click the OK button.



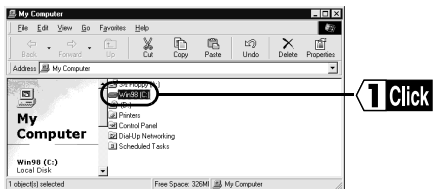
Caution Be sure to enter your user name and password whenever this window appears, or you will not be able to access the network.

- Next** Go to "Sharing settings" below.

Sharing settings

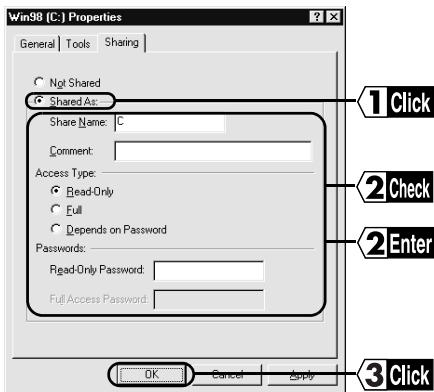
Make settings for sharing drives and folders. The example here describes the procedure for sharing the C drive in My Computer.

- 1 Double-click the My Computer icon on the desk top.
- 2 Click the icon for the C drive with the right mouse button and select Sharing.



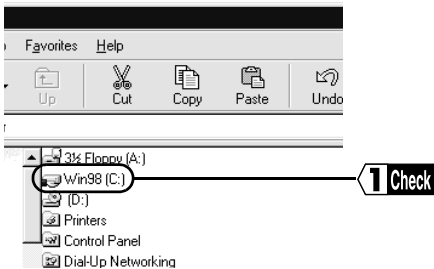
Continued on next page

- 3 Select "Shared As:", and check or change Share Name, Comment, Access Type, and Password. Click the OK button.



Reference Refer to "Sharing in Windows98/95" on page 120, for details of Share Name, Comment, Access Type, and Password.

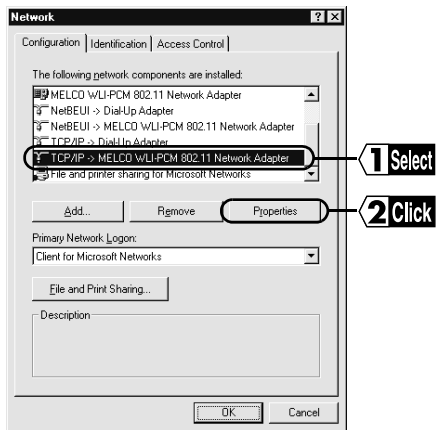
- 4 The icon for the C drive changes as shown below.



Next Go to "Setting TCP/IP" on page 55.

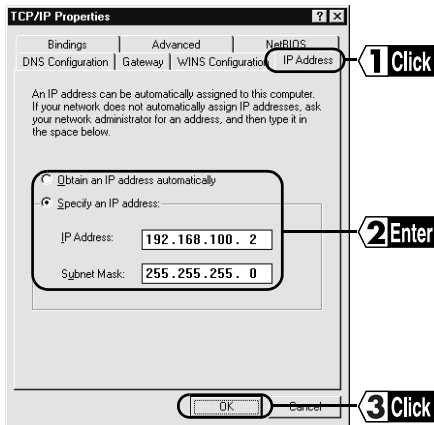
Setting TCP/IP

- 1 Click the Start button and select Settings → Control Panel.
- 2 Double-click the Network icon.
- 3 Select "TCP/IP" and click the Properties button.



Continued on next page

4 Click the IP address tab. Set the IP address and click the OK button.



Note Refer to "Assign IP address" on page 115 for IP address settings.

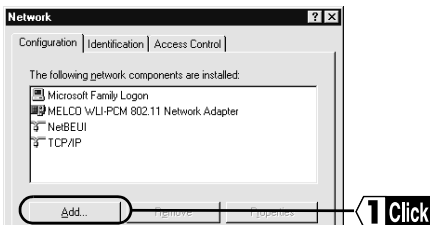
Caution Contact the network administrator and check the IP address.

Windows98/95 restarts and TCP/IP settings are completed.

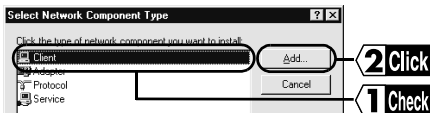
Next Go to "Installing Client Manager" on page 79.

Adding Microsoft Network Client

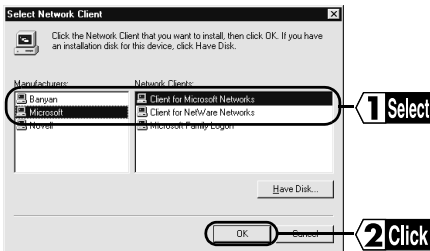
- 1 Click the Start button and select Settings → Control Panel.
- 2 Double-click the Network icon.
- 3 Click the Add button.



- 4 Select "Client" and click the Add button.



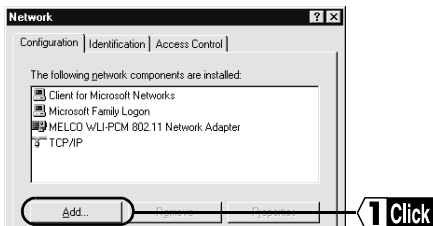
- 5 Select "Microsoft" for Manufacturer and "Microsoft Network Client" for Network Clients, and click the OK button to return to the Network screen (step 3).



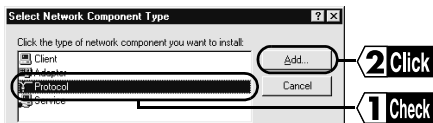
Next Go to "Checking NetBEUI, TCP/IP, and Microsoft Network Client" on page 49.

Adding NetBEUI

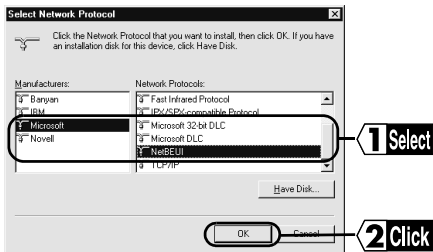
- 1 Click the Start button and select Settings → Control Panel.
- 2 Double-click the Network icon.
- 3 Click the Add button.



- 4 Select "Protocol" and click the Add button.



- 5 Select "Microsoft" for Manufacturer and "NetBEUI" for Network Clients, and click the OK button to return to the Network screen (step 3).



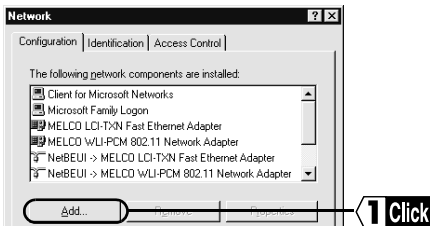
Next Go to "Checking NetBEUI, TCP/IP, and Microsoft Network Client" on page 49.

Adding TCP/IP

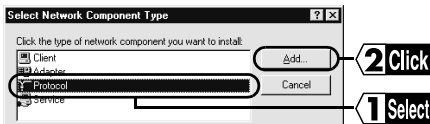
Follow the steps below when TCP/IP is not already on your computer.

1 Click the Start button and select Settings → Control Panel → Network.

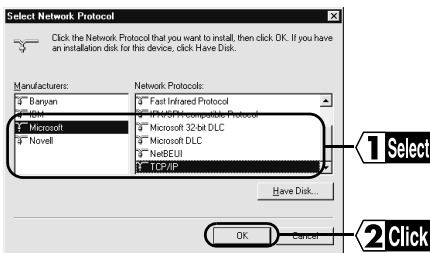
2 Click the Add button.



3 Select "Protocol" and click the Add button.



4 Select "Microsoft" for Manufacturer and "TCP/IP" for Network Protocol, and click the OK button.



5 The Network window (step 2) appears.

Next Go to "Checking NetBEUI, TCP/IP, and Microsoft Network Client" on page 49.

4

WindowsNT4.0 Settings

This chapter describes the setting procedures for the WLI-PCM when using WindowsNT4.0.

Driver installation

Before installing driver

Caution

- Check that the WLI-PCM is correctly inserted into your computer.
- The PC card driver for WindowsNT4.0 must be operating correctly. Select Control Panel → Devices and check that the status for "pcmcia" is "start".
- The WLI-PCM cannot be inserted or removed with the computer on. There is no resume function for WindowsNT4.0.

The installation procedure for the driver differs depending on the operating environment of your computer. Select the applicable case.

Next

When installing the driver to a computer with WindowsNT4.0 already set up, go to "When WindowsNT4.0 is already set up" on page 61.

When installing the driver during WindowsNT4.0 setup, go to "When WindowsNT4.0 is to be set up" on page 69.

When WindowsNT4.0 is already set up

Different procedures apply depending on whether the driver has been installed before, when WindowsNT4.0 is already set up.

Next

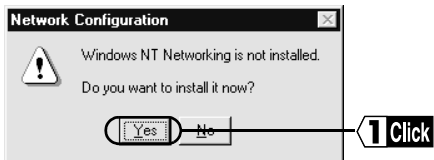
When installing the driver for the first time, go to "When installing driver for first time" below.

* When a LAN card driver has been installed before, go to "When LAN card driver has been installed before" on page 66.

When installing driver for first time

Follow the steps below when installing the driver for the first time after setting up WindowsNT4.0.

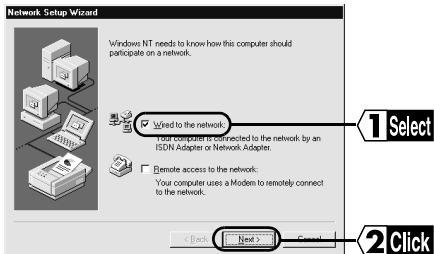
- 1 Start WindowsNT4.0 and log-on as "administrator".
- 2 Click the Start button and select Settings → Control Panel.
- 3 Double-click the Network icon.
- 4 Click the Yes button. The message "Please wait while WindowsNT prepares Network Setup..." is displayed.



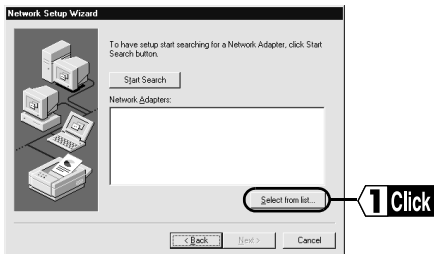
Caution If the above message does not appear, go to step 4 in "When LAN card driver has been installed before" on page 66.

Continued on next page

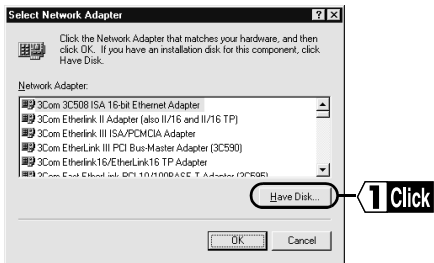
5 Select "Wired to the network" and click the Next button.



6 Click the Select from list... button.

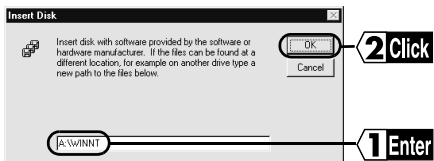


7 Click the Have Disk... button.

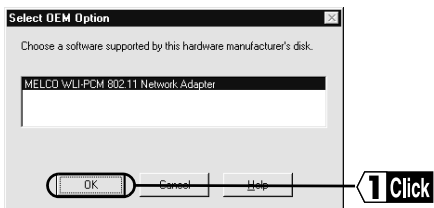


Continued on next page

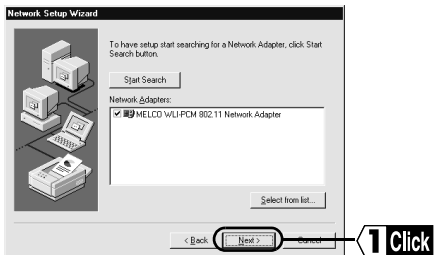
- 8 Insert the "LAN Card Utility for WLI-PCM" disk into the floppy disk drive.
- 9 Enter "A:\WINNT" (when the floppy disk drive is "A") and click the OK button.



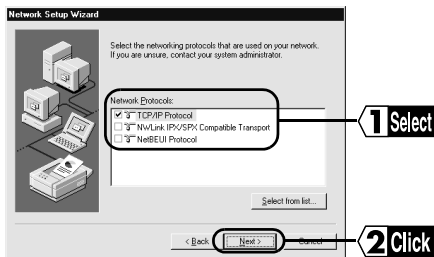
- 10 Click the OK button.



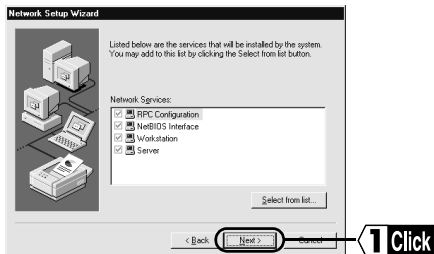
- 11 Click the Next button.



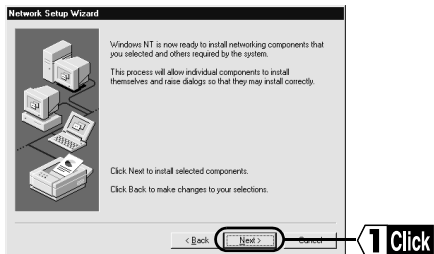
- 12 Select the network protocol to be used for the network and click the Next button.



- 13 Click the Next button.



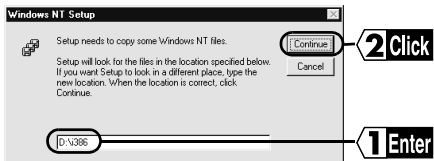
- 14 Click the Next button.



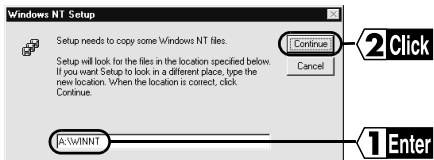
Continued on next page

15 Set the WindowsNT CD-ROM in the CD-ROM drive.

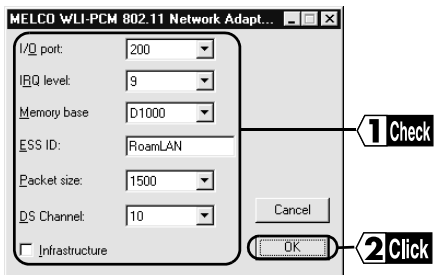
16 Enter "D:\I386" (when the CD-ROM drive is "D") and click the Continue button.



17 Enter "A:\WINNT" (when the floppy disk drive is "A") and click the Continue button.



18 The current settings for the WLI-PCM (IRQ level, I/O port address, Memory base) are displayed. Check the settings and click the OK button.



When the message "This IRQ level (I/O port address, Memory base) is used by another board. Please select another value." appears, change the settings.

Setting items

ESS-ID: To be set later from Client Manager

DS channel: Do not change.

Packet size: Maximum packet size (usually set to 1500)

Infrastructure: Delete the check mark if present.

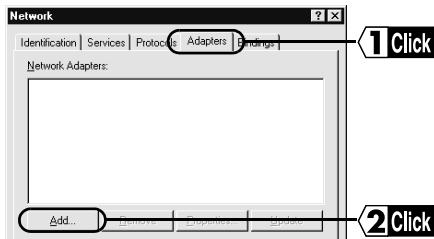
Install the driver as instructed by the wizards.

Next Go to "Changing settings" on page 70.

When LAN card driver has been installed before

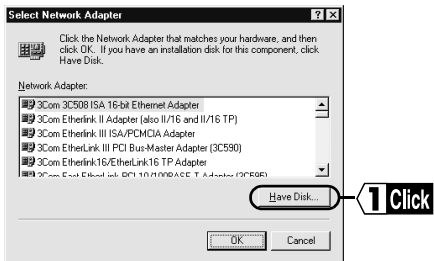
Follow the steps below when WindowsNT4.0 is already set up and a driver has been installed before.

- 1 Start WindowsNT4.0 and log-on as administrator'.
- 2 Click the Start button and select Settings → Control Panel.
- 3 Double-click the Network icon.
- 4 Click the Adapters tab and the Add button.



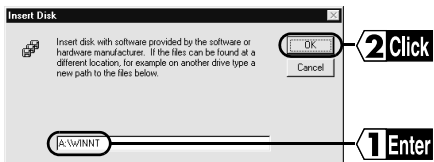
Continued on next page

5 Click the Have Disk... button.

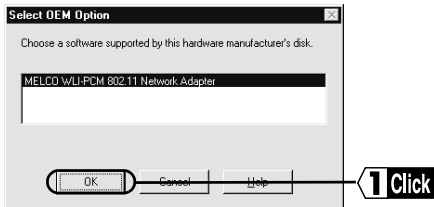


6 Insert the "LAN Card Utility for WLI-PCM" disk into the floppy disk drive.

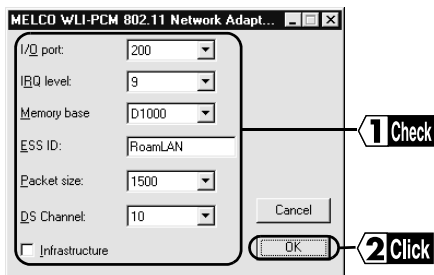
7 Enter "A:\WINNT" (when the floppy disk drive is "A") and click the OK button.



8 Click the OK button.



- 9 The current settings for the WLI-PCM (IRQ level, I/O port address, Memory base) are displayed. Check the settings and click the OK button.



When the message "This IRQ level (I/O port address, Memory base) is used by another board. Please select another value." appears, change the settings.

Setting items

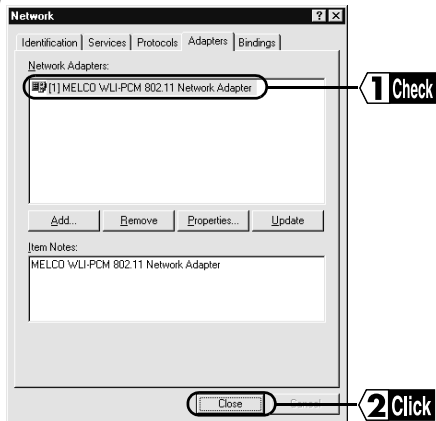
ESS-ID: To be set later by Client Manager

DS channel: Do not change.

Packet size: Maximum packet size (usually set to 1500)

Infrastructure: Delete the check mark if present.

10 "MELCO WLI-PCM 802.11 Network Adapter" is added. Click the OK button.



Install the driver as instructed by the wizards.

Next Go to "Changing settings" on page 70.

When WindowsNT4.0 is to be set up

Refer to the following items when installing the driver during WindowsNT4.0 setup. Follow the setup procedures described in the WindowsNT4.0 manual.

Select the driver

Specify the driver name "MELCO WLI-PCM 802.11 Network Adapter". Refer to steps 6 to 11 in "When installing driver for first time" (page 61)" for details.

WLI-PCM settings

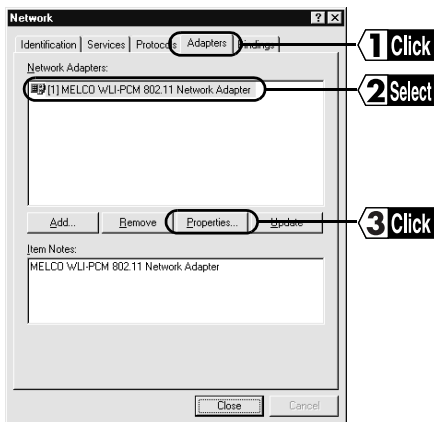
Check the current settings for the WLI-PCM (IRQ level, I/O port address, Memory base) and click the OK button.

Next Go to "Changing settings" on page 70.

Changing settings

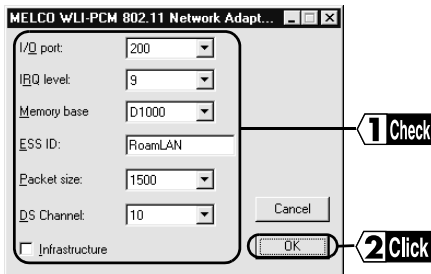
Follow the steps below to change the settings for the WLI-PCM (IRQ level, I/O port address, Memory base).

- 1 Start WindowsNT4.0 and log-on as administrator'.
- 2 Click the Start button and select Settings → Control Panel.
- 3 Double-click the Network icon.
- 4 Click the Adapters tab. Select "MELCO WLI-PCM 802.11 Network Adapter" and click the Properties button.



Continued on next page

- 5 The current settings for the WLI-PCM (IRQ level, I/O port address, Memory base) are displayed. Change the settings as required and click the OK button.



Setting items

ESS-ID: To be set later from Client Manager

DS channel: Do not change.

Packet size: Maximum packet size (usually set to 1500)

Infrastructure: Delete the check mark if present.

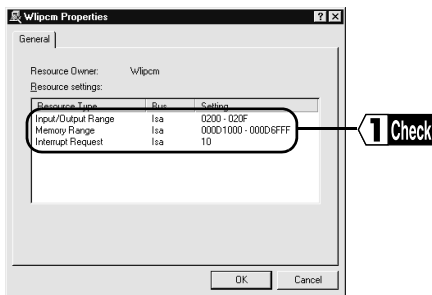
- 6 Restart the computer to activate the new settings.

Next Go to "Checking after installation" on page 72.

Checking after installation

WindowsNT4.0 has a standard diagnosis program that checks whether the WLI-PCM is set correctly. Follow the steps below to perform this check.

- 1 Click the Start button and select Programs → Administrative Tools (Common) → WindowsNT Diagnostics.
- 2 Click the Resources tab.
- 3 Click Devices.
- 4 Select "Wlipcm" from the Device list, and click the Properties button.
- 5 Check that "Input/Output Range", "Memory Range", and "Interrupt Request" are displayed.



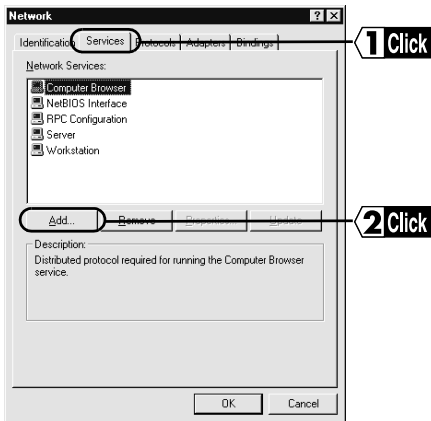
If no settings are displayed or "Wlipcm" is not listed in the Device list, change the resource settings. Also, check that the WLI-PCM is installed correctly.

Next Go to "Installing the ESS ID Driver" on page 73.

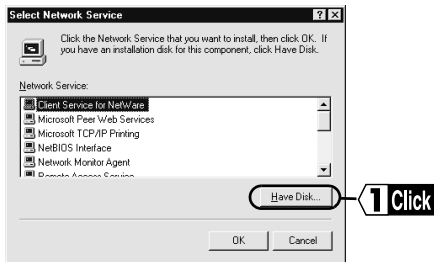
Installing the ESS ID Driver

The ESS ID driver must be installed before you can use the WLI-PCM. Follow the procedure below to install the driver.

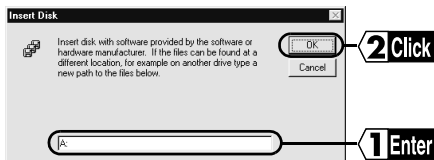
- 1 Click the Start button and select Settings → Control Panel.
- 2 Double-click the Network icon.
- 3 Click the Services tab and then click the Add... button.



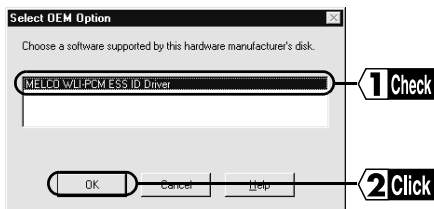
4 Click the Have Disk... button.



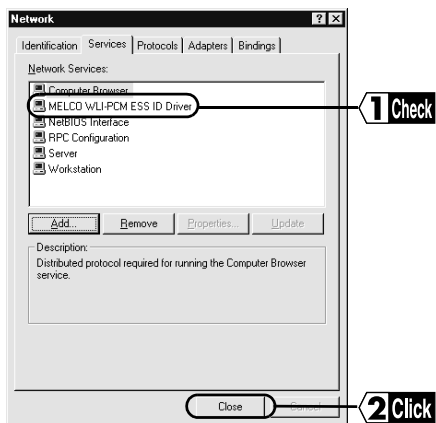
5 Enter "A:" (when the floppy disk drive is "A") and click the OK button.



6 Check that "MELCO WLI-PCM ESS ID Driver" is displayed and then click the OK button.



- 7 Check that the MELCO WLI-PCM ESS ID Driver is installed and then click the Close button.



The message "Do you want to restart your computer now?" is displayed. Click Yes to restart.

- Next** Go to "Preparing for connection to network" on page 76.

Preparing for connection to network

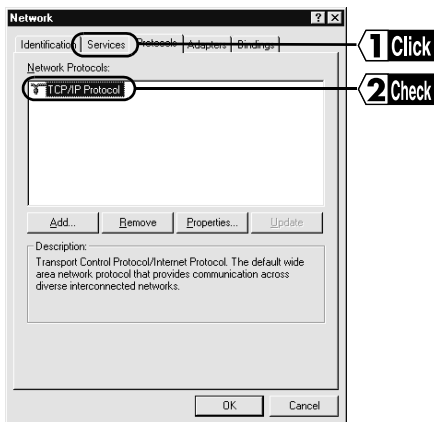
After checking that the WLI-PCM is operating correctly, you can try connecting to the network.

The following is required for all computers.

- Checking TCP/IP
- Setting TCP/IP

Checking TCP/IP

- 1 Click the Start button and select Settings → Control Panel.
- 2 Double-click the Network icon.
- 3 Click the Protocol tab and check that "TCP/IP Protocol" is listed in the Network Protocols column.

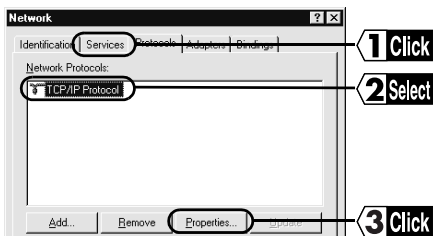


Note If "TCP/IP Protocol" is not listed, add it, referring to "Adding TCP/IP" on page 78.

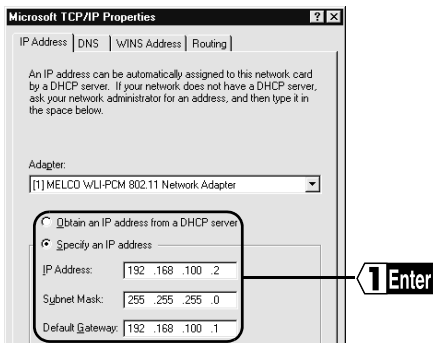
Next Go to "Setting TCP/IP" on page 77.

Setting TCP/IP

- 1 Click the Start button and select Settings → Control Panel.
- 2 Double-click the Network icon.
- 3 Click the Protocol tab. Select "TCP/IP Protocol" and click the Properties button.



- 4 Set the IP address and click the OK button.



Note Refer to "Assign IP address" on page 115 for IP address settings.

Caution Contact the network administrator to check the IP address setting.

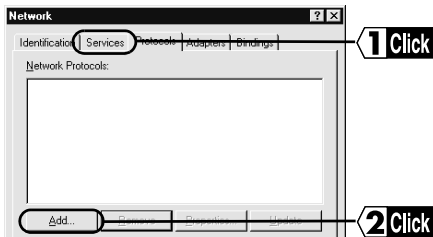
- 5 WindowsNT4.0 restarts and TCP/IP settings are completed.

Next Go to "Installing Client Manager" on page 79.

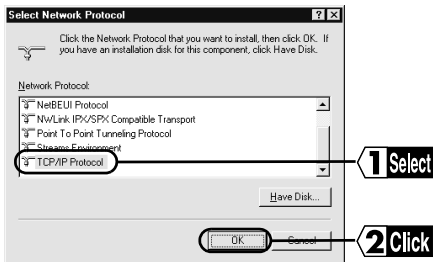
Adding TCP/IP

Follow the steps below when TCP/IP is not already on your computer.

- 1 Click the Start button and select Settings → Control Panel → Network.
- 2 Double-click the Network icon.
- 3 Click the Protocol tab and the Add button.



- 4 Select "TCP/IP Protocol" and click the OK button.



- 5 The Network window (step 2) appears.

Next Go to "Checking TCP/IP" on page 76.

5

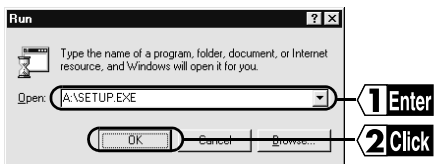
Installing Client Manager

Client Manager is required to search for the access point and change settings for the WLI-PCM. This chapter describes the procedures for installing and uninstalling Client Manager.

Installation

Follow the steps below to install Client Manager to all computers using the WLI-PCM.

- 1 Insert the "LAN Card Utility for WLI-PCM" disk into the floppy disk drive.
- 2 Click the Start button and select Run....
- 3 Enter the path for "setup.exe" on the "LAN Card Utility for WLI-PCM" disk and click the OK button.



e.g.: A:\setup.exe (when the floppy disk drive is "A")

- 4 Quit any other applications that are running and click the OK button.

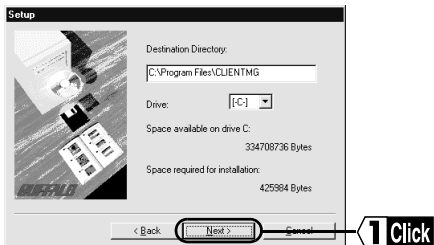


Continued on next page

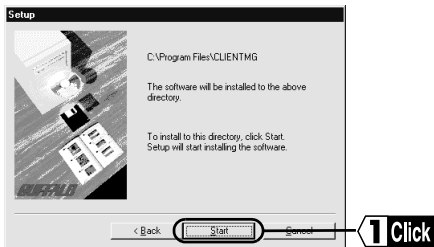
5 Click the Next button.



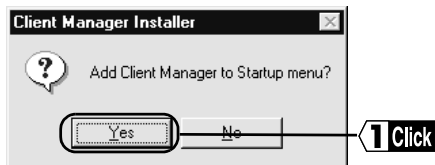
6 Check the destination directory for Client Manager and click the Next button. If you want to change the directory, enter a new path and click the Next button.



7 Check the destination directory again and click the Start button. Files are copied to the specified directory.



- 8 Click the Yes button. Client Manager is registered in the Startup menu.



Note Click No when you do not want to add Client Manager to the Startup menu.

- 9 Click the OK button to complete installation.

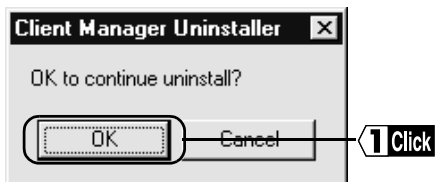


Next Go to "Connection to Network" on page 83.

Uninstallation

Follow the steps below to uninstall Client Manager.

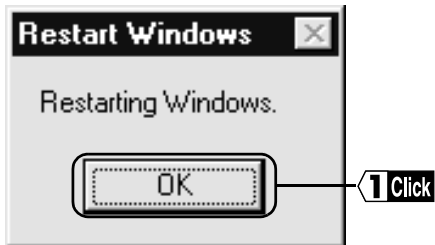
- 1 Click the Start button and select Programs → MELCO WLI-PCM Utility → Uninstall Client Manager.
- 2 Click the OK button. Client Manager is removed, and related files and icons are automatically deleted.



- 3 Click the OK button. Uninstallation of Client Manager is completed.



- 4 Click the OK button. The computer restarts.



6

Connection to Network

After all required settings for the computer are completed, you can try connecting to the network. This chapter describes how to access the network, check signal and communication conditions, and select the target computer on the network.

Connection to network

Follow the steps below to access the network.

There are two types of connection: direct connection between wireless LAN PC's and connection to a computer on a wired LAN via an access point (available separately). The setting procedures vary depending on the connection type. Select the appropriate procedure for your operating environment.

Connection between wireless LAN PCs

The factory default ESS-ID (RoamLAN) can be used for connection between wireless LAN PCs, however, we recommend that you change the ESS-ID to ensure further security.

When adjacent companies build networks using the same (factory default, for example) ESS-ID, their networks may be inadvertently connected and confidential information may leak. It is safer to configure the network using an access point (MELCO INC.'s WLA-T1) with a unique identification code automatically assigned.

Caution If you change the ESS-ID, be sure to change that of the destination computer. Computers with different ESS-IDs cannot be connected. Contact the administrator for the ESS-ID.

Note Refer to "ESS-ID" on page 10.

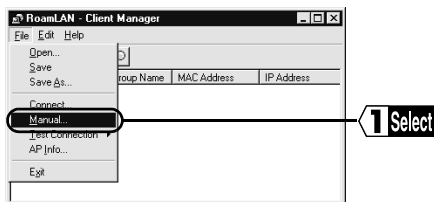
Continued on next page

- 1 Click the Start button and select Programs → MELCO WLI-PCM Utility → Client Manager.

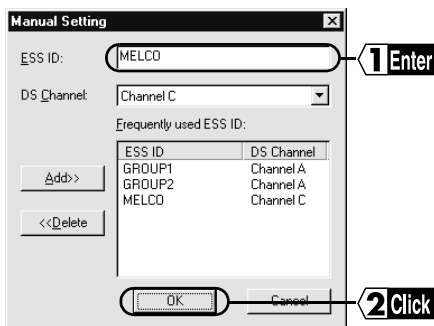
If the following icon is displayed in the task tray on the screen, you can double-click this icon to start Client Manager.



- 2 Select File → Manual....



- 3 Enter the ESS-ID, select the DS channel and click the OK button.
If the desired ESS-ID is registered in the Frequently Used ESS ID list, select it from there and click the OK button.



Note Click the Add button after entering the ESS-ID to register it as a frequently used ESS-ID. Select any unused ESS-IDS in the list and click the Delete button to delete it.

Caution The ESS-ID is upper/lower case sensitive and can consist of up to 32 alphanumeric characters, including the under bar (_).

Connection to a wireless LAN PC with the same ESS-ID is completed.

Next Go to "Checking connection to network" on page 91.

Connection to wired LAN PC using access point

Access point information files must be obtained from the network administrator before connecting to the network.

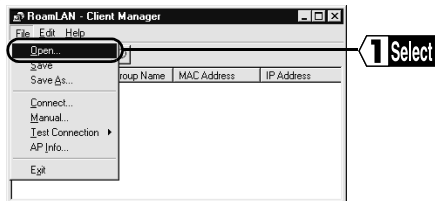
Note Refer to "When access point information is not available" on page 88 to acquire the information files.

- 1 Click the Start button and select Programs → MELCO WLI-PCM Utility → Client Manager.

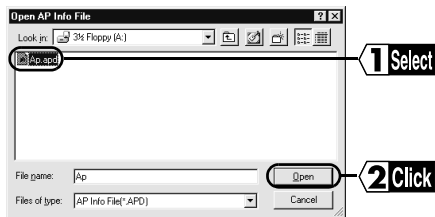
If the following icon is displayed in the task tray on the screen, you can double-click this icon to start Client Manager.



- 2 Select File → Open.



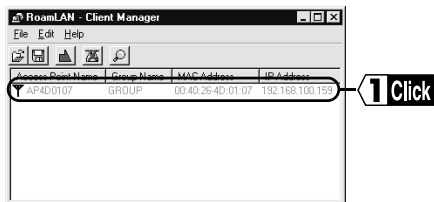
- 3 Select the access point information file and click the Open button.



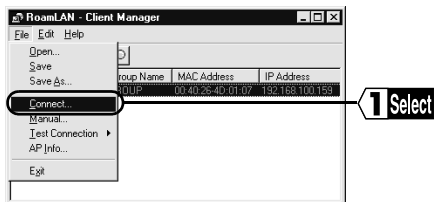
Note Contact the network administrator to check the file to be selected.

Continued on next page

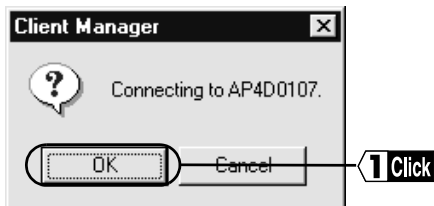
- 4 The access point appears in the list in gray. Select the target access point.



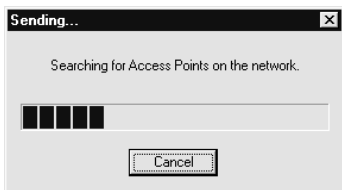
- 5 Select Open → Connect....



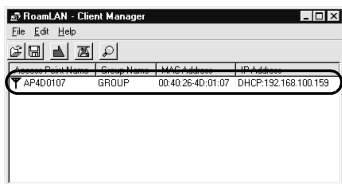
- 6 Click the OK button.



7 The ESS-ID is changed and access points are searched automatically.



8 Connection to the access point is completed.



Note The access point in the list turns from gray to black and an antenna mark (Y) appears when your computer is connected to the access point.

Reference Refer to "The access point cannot be accessed using Client Manager (access point is displayed in gray even when it is found)." on page 106 if the access point in the list does not change to black.

Next Go to "Checking connection to network" on page 91.



When access point information is not available

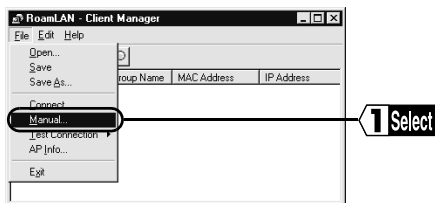
You need to enter the ESS-ID if the access point information file is not available. Contact the network administrator to check the ESS-ID before connecting to the network.

- 1 Click the Start button and select Programs → MELCO WLI-PCM Utility → Client Manager.

If the following icon is displayed in the task tray on the screen, you can double-click this icon to start Client Manager.

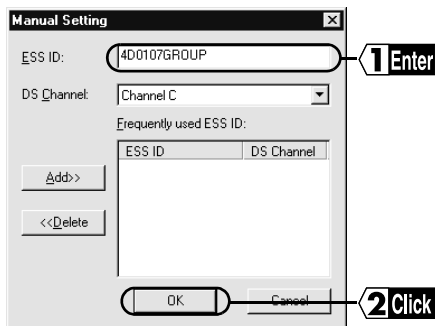


- 2 Select File → Manual...



- 3 Enter the ESS-ID, select the DS channel for the target access point and click the OK button.

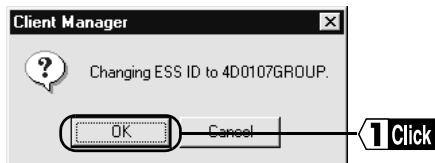
If the desired ESS-ID is registered in the Frequently Used ESS ID list, select it from there and click the OK button.



Note Contact the network administrator to check the ESS-ID.

Caution The ESS-ID is upper/lower case sensitive and can consist of up to 32 alphanumeric characters, including the under bar (_).

- 4 Click the OK button.
The ESS-ID is changed.

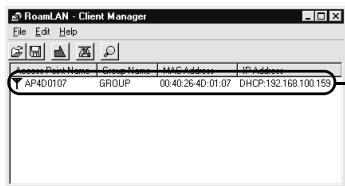


- 5 The ESS-ID is changed and the access point is searched automatically.



Continued on next page

- 6 Connection to the access point is completed.
The access point is displayed.



Note The access point in the list turns from gray to black and an antenna mark (Y) appears when your computer is connected to the access point.

Reference Refer to "The access point cannot be accessed using Client Manager (access point is displayed in gray even when it is found)." on page 106 if the access point in the list does not change to black.

Checking connection to network

This section describes the methods for checking the connection between wireless LAN PCs and between the WLI-PCM and an access point.

Connection between wireless LAN PCs

The PING command is used to check the connection between wireless LAN PCs. Executing the PING command checks that the IP packet reaches the destination correctly.

Note The TCP/IP protocol must be installed to execute the PING command.

- 1 Click the Start button and select Programs → MS-DOS Prompt.
If you are using WindowsNT4.0, select Programs → Command Prompt.
- 2 Enter the PING command as shown below (when the hard disk drive is "C").
C:\>ping XXX.XXX.XXX.XXX
Where "XXX.XXX.XXX.XXX" is the IP address of the target destination.
e.g. When the IP address of the target destination is "192.168.100.123"
C:\>ping 192.168.100.123
- 3 If the devices are connected correctly, the following is displayed.
Pinging 192.168.100.123 with 32 bytes of data:

```
Reply from 192.168.100.123:bytes=32 time=1ms TTL=32
Reply from 192.168.100.123:bytes=32 time<10ms TTL=32
Reply from 192.168.100.123:bytes=32 time=4ms TTL=32
Reply from 192.168.100.123:bytes=32 time<10ms TTL=32
```

If they are not connected correctly, a condition specific error message such as "Request timed out" or "Destination host unreachable" appears. In this case, refer to "Communication between wireless LAN PCs is impossible. No reply is returned when executing the PING command to a wireless LAN PC." on page 109.

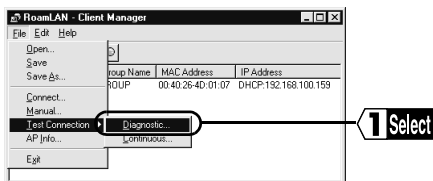
Note Connection to the access point cannot be checked by executing the PING command from a wireless LAN PC.

Next Go to "Connection to other computers" on page 97.

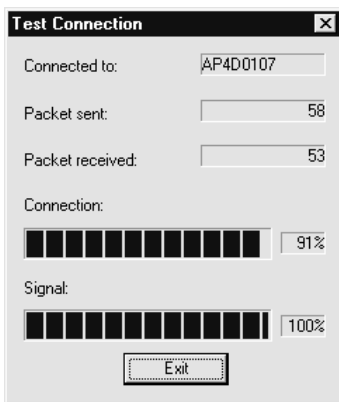
Checking connection between the WLI-PCM and an access point

Client Manager is used to check connection conditions between the WLI-PCM and an access point.

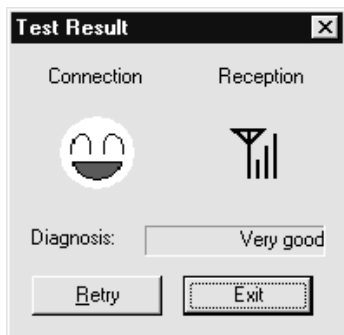
- 1 Click the Start button and select Programs → MELCO WLI-PCM Utility → Client Manager.
- 2 Select the access point, and then File → Test Connection → Diagnostic....



- 3 Check the connection.











4 The result of the test is displayed.



Next Go to "Results of test" on page 94.


Results of test

The connection and signal conditions are shown as the results of the connection test. The symbols used and their meanings are shown below.

Connection		Signal		Results	
	Very good		Very good	Acceptable	No communication problems
	Good		Good		
	Bad		Poor		
	Very bad		Bad	Not acceptable	Communication conditions are unstable
		No Signal!	Communication impossible		

Take any of the following actions when the diagnosis result is "not acceptable".

1. Move the wireless LAN PC closer to the access point.
2. Request the access point administrator to change the location of the access point.
3. Eliminate obstacles between the wireless LAN PC and the access point.
4. Check that there is no source of interference such as a microwave oven near the access point or wireless LAN PC.

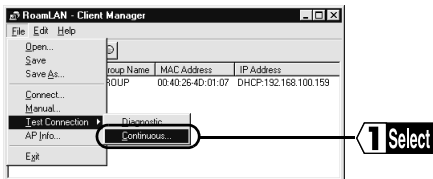
 **Next** Go to "Connection to other computers" on page 97.



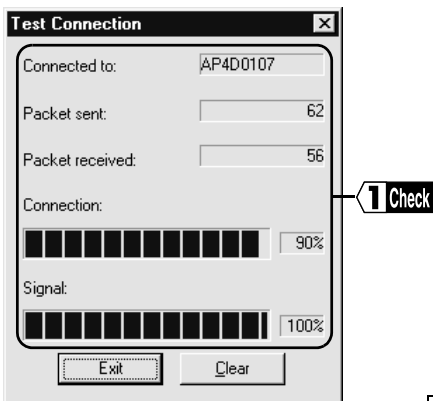
When installing the access point for the first time

Follow the steps below when installing the access point for the first time.

- 1 Move the access point to the desired location.
- 2 Click the Start button and select Programs → MELCO WLI-PCM Utility → Client Manager.
- 3 Select the access point, and then File → Test Connection → Continuous....



- 4 Check the number of sent packets and received packets, and percentage indicating the connection and signal conditions.



Continued on next page

- 5** Move the client to check the effective communication range.
 - 6** Determine the location of the access point where the best communication conditions are ensured.
-

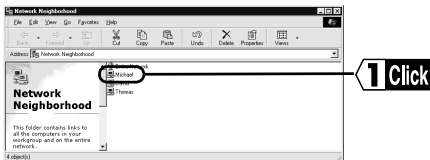
Connection to other computers

When the computer is connected to the network, try connecting to a wireless LAN PC or wired LAN PC.

Screens from Windows98 are used in this example.

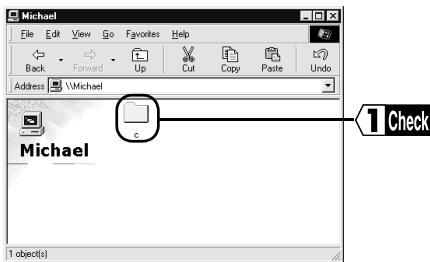
1 Double-click the Network Neighborhood icon.
Computers connected Peer to Peer are listed.

2 Double-click the icon of the target computer.



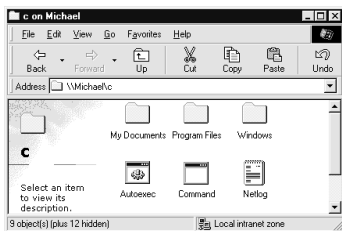
Reference Refer to "Computers are not listed after double-clicking the Network Neighborhood icon" on page 103.

3 The drive(s) set to be shared (page 53) are listed.
Double-click the desired drive.



Continued on next page

4 The contents of the selected drive are displayed and you can access the desired folder.



Next Computers with a WLI-PCM mounted can be connected to other computers on the same wireless or wired LAN. You can now operate your computers in a comfortable environment using both the wireless and wired LANs.

7

Troubleshooting

This chapter describes problems that may occur during operation, and possible causes and solutions for these problems.

The computer does not recognize the WLI-PCM.

Possible cause

The WLI-PCM is not inserted into the PC card slot on the computer.

Solution

Check the direction of the WLI-PCM and insert it again.

Possible cause

The PC card slot on the computer is faulty.

Solution

- If your computer has two slots, insert the WLI-PCM to the other slot.
- If you have another computer, insert the WLI-PCM to that computer to locate the cause of the problem.

The WLI-PCM does not operate correctly.

Possible cause

The computer's power management function is activated.

Solution

Turn the power management function off. Refer to the instruction manual provided with the computer for details.

Add New Hardware Wizard does not appear when the WLI-PCM is inserted (Windows98/95). Or, an error mark "!" appears next to "MELCO WLI-PCM 802.11 Network Adapter".

Possible cause

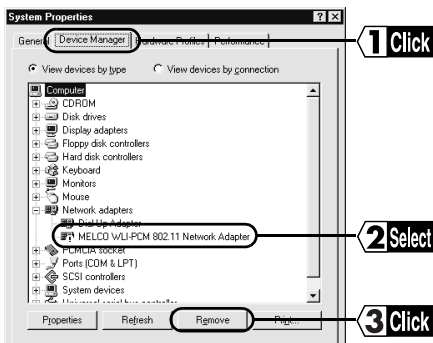
- The driver is not installed correctly.
- "!" mark appears next to "MELCO WLI-PCM 802.11 Network Adapter" in the "Network Adapters" list on the Device Manager window called by pressing the Start button and selecting Settings → Control Panel → System → Device Manager.

Solution

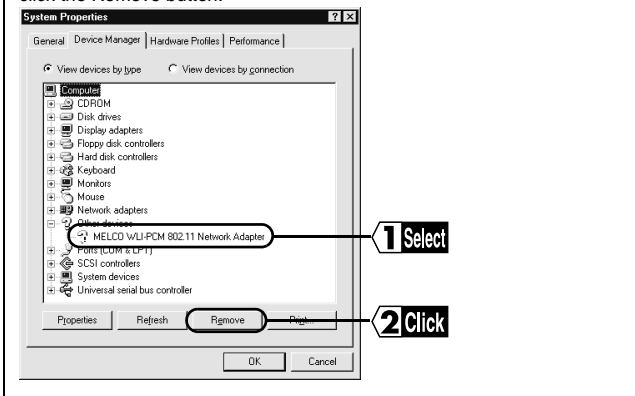
Follow the steps below to uninstall and re-install the driver.

⚠ Caution Check that the WLI-PCM is inserted to the PC card slot on the computer.

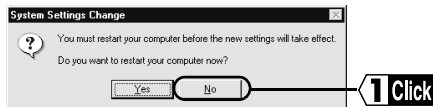
- 1 Click the Start button and select Settings → Control Panel.
- 2 Double-click the System icon.
- 3 Click the Device Manager tab.
Select "MELCO WLI-PCM 802.11 Network Adapter" in the "Network Adapters" list, and click the Remove button.



"MELCO WLI-PCM 802.11 Network Adapter" may be included in "Other devices". If so, select "MELCO WLI-PCM 802.11 Network Adapter" and click the Remove button.



4 Click the No button.



5 Double-click the Network icon.

6 If "MELCO WLI-PCM 802.11 Network Adapter" is displayed, remove it.

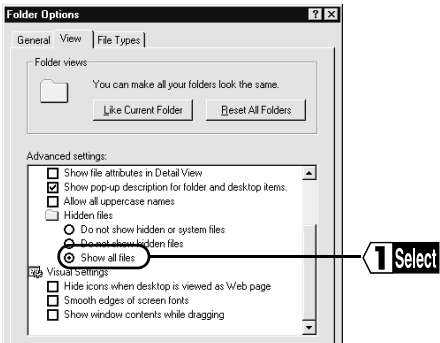
Continued on next page

7 Click the OK button.

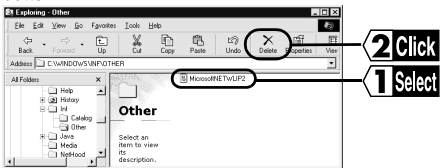
Note Click the No button if the message "Restart computer now?" appears.

Note If you are using Windows98, follow the steps below.

1. Click the Start button and select Programs → Explorer.
2. Select View → Folder Options and click the View tab.
3. Check "Show all files" and click the OK button.



4. Select "C:\Windows\INF\OTHER\MicrosoftNetwlp2.inf" and click the Delete button.



8 Exit Windows98/95 and turn the computer off.

9 Remove the WLI-PCM.

Check the PC card driver referring to "Checking 32-bit PC card driver" on page 16. Then re-install the driver following the steps in "Driver installation" on page 26.

Next Go to "Checking 32-bit PC card driver" on page 16.

Computers are not listed after double-clicking the Network Neighborhood icon

Possible cause

The password was not entered when Windows98/95 started.

Solution


Be sure to enter your user name and password when starting Windows98/95. If you forget your password, enter a different user name. In this case, you do not have to enter the password. If you enter a new password, the new user name and password are registered in the computer.

Possible cause

The TCP/IP is configured, but the IP address is not correct.

Solution

Check that the IP address is set correctly.

 **Reference** Refer to "Assign IP address" on page 115.

Possible cause

The driver is not installed correctly.

Solution

Check that the driver is installed correctly.

When using Windows98/95, refer to "Checking after installation" on page 40.

When using WindowsNT4.0, refer to "Checking after installation" on page 72.

Possible cause

The computer cannot communicate with the access point or wireless LAN PC because the ESS-ID is not correct.

Solution

Check the ESS-ID, referring to "Checking connection to network" on page 91.

Computers are not listed after double-clicking the Network Neighborhood icon (continued)

Possible cause

It takes too long to search the network and list the connected computers.

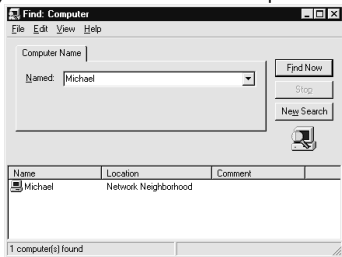
Solution

Search for the connected computers as follows.

- (1) Click the Start button and select Find → Computer...
- (2) Enter the name of the target computer and click the Find Now button.



- (3) Double-click the icon of the computer found to access it.



Possible cause

The workgroup is not set correctly.

Solution

Check the settings for the workgroup.

Computers are not listed after double-clicking the Network Neighborhood icon (continued)

Possible cause

Network settings are not correct.

Solution

Check the protocol, workgroup name, and sharing settings.

When using Windows98/95, refer to "Preparing for connection to network" on page 49.

When using WindowsNT4.0, refer to "Preparing for connection to network" on page 76.

Possible cause

TCP/IP is not installed or configured correctly.

Solution

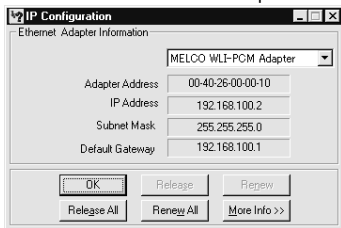
Check the TCP/IP settings again.

■Windows98/95

1. Click the Start button and select Run....

Enter "WINIPCFG" in the window displayed and click the OK button.

2. Select "MELCO WLI-PCM Adapter" and check the IP address.



If the IP address is not correct, refer to "Setting TCP/IP" on page 55.

Continued on next page

■ WindowsNT4.0

1. Click the Start button and select Programs → Command Prompt.
2. Enter "IPCONFIG" and press the RETURN key.
3. Check that the correct IP address is displayed for "IP Address" under "WLI-PCM Adapter".

Ethernet adapter wlipcm1	
IP address	:192.168.100.188
Subnet Mask	:255.255.255.0
Default Gateway	:192.168.100.1

If the IP address is not correct, refer to "Setting TCP/IP" on page 77.

Possible cause

The drive is not installed correctly.

Solution

Refer to "Add New Hardware Wizard does not appear when the WLI-PCM is inserted (Windows98/95)" and then re-install the driver.

The access point cannot be accessed using Client Manager (access point is displayed in gray even when it is found).

Possible cause

The driver is not installed correctly.

Solution

Check that the driver is installed correctly. Also, check that the lamp on the WLI-PCM is lit.

When using Windows98/95, refer to "Checking after installation" on page 40.

When using WindowsNT4.0, refer to "Checking after installation" on page 72.

The access point cannot be accessed using Client Manager (access point is displayed in gray even when it is found). (continued)

Possible cause

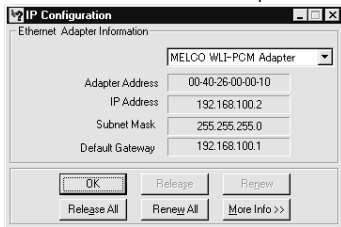
TCP/IP is not installed or configured correctly.

Solution

Check the TCP/IP settings again.

■Windows98/95

1. Click the Start button and select Run....
Enter "WINIPCFG" in the window displayed and click the OK button.
2. Select "MELCO WLI-PCM Adapter" and check the IP address.



If the IP address is not correct, refer to "Setting TCP/IP" on page 55.

■WindowsNT4.0

1. Click the Start button and select Programs → Command Prompt.
2. Enter "IPCONFIG" and press the RETURN key.
3. Check that the correct IP address is displayed for "IP Address" under "WLIPCM Adapter".

Ethernet adapter wlipcm1	
IP address	:192.168.100.188
Subnet Mask	:255.255.255.0
Default Gateway	:192.168.100.1

If the IP address is not correct, refer to "Setting TCP/IP" on page 77.

The access point cannot be accessed using Client Manager (access point is displayed in gray even when it is found). (continued)

Possible cause

The ESS-ID of the target access point is not entered correctly.

Solution

The ESS-ID is upper/lower case sensitive. Check the ESS-ID of the access point again, referring to the user's manual of the WLA-T1 (available separately).

Possible cause

Communication with the access point is not possible due to poor signal reception.

Solution

Shorten the distance between the WLI-PCM and access point, or remove any obstacles between them, and re-try communication.

Possible cause

The access point has not completed starting.

Solution

It takes 1 ~ 2 minutes for the access point to start after power is supplied. Wait for 2 minutes or longer before attempting connection after turning the access point on.

Change target access point

Solution

Refer to "Change target access point" on page 112.

Communication between wireless LAN PCs is impossible. No reply is returned when executing the PING command to a wireless LAN PC.

Possible cause

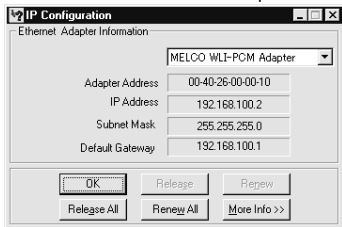
TCP/IP is not installed or configured correctly.

Solution

Check the TCP/IP settings again.

■Windows98/95

1. Click the Start button and select Run....
Enter "WINIPCFG" in the window displayed and click the OK button.
2. Select "MELCO WLI-PCM Adapter" and check the IP address.



If the IP address is not correct, refer to "Setting TCP/IP" on page 55.

■WindowsNT4.0

1. Click the Start button and select Programs → Command Prompt.
2. Enter "IPCONFIG" and press the RETURN key.
3. Check that the correct IP address is displayed for "IP Address" under "WLI-PCM Adapter".

Ethernet adapter wlipcm1	
IP address	:192.168.100.188
Subnet Mask	:255.255.255.0
Default Gateway	:192.168.100.1

If the IP address is not correct, refer to "Setting TCP/IP" on page 77.

Communication between wireless LAN PCs is impossible. No reply is returned when executing the PING command to a wireless LAN PC. (continued)

Possible cause

TCP/IP is configured, but the IP address is not correct.

Solution

Check that the IP address is set correctly.

 **Reference** Refer to "Assign IP address" on page 115.

Possible cause

The driver is not installed correctly.

Solution

Check that the driver is installed correctly. Also, check that the lamp on the WLI-PCM is lit.

When using Windows98/95, refer to "Checking after installation" on page 40.

When using WindowsNT4.0, refer to "Checking after installation" on page 72.

Possible cause

The ESS-ID is different from the target computer.

Solution

The ESS-ID is upper/lower case sensitive. Check the ESS-ID for your computer and the target computer.

 **Reference** Refer to "Connection to Network" on page 83.

Communication between wireless LAN PCs is impossible. No reply is returned when executing the PING command to a wireless LAN PC. (continued)

Possible cause

Communication with the access point is not possible due to poor signal reception.

Solution

Shorten the distance between the WLI-PCM and access point, or remove any obstacles between them, and re-try communication.


No reply is received when the wireless LAN PC executes the PING command to the access point (WLA-T1).

Possible cause

The access point specifications do not permit a reply to a PING command executed from wireless LAN PC. (A reply is only received if the PING command is executed from a wired LAN PC.)

Solution

Perform connection test using Client Manager to check connection conditions between the wireless LAN PC and access point.

 **Reference** Refer to "Checking connection between the WLI-PCM and an access point" on page 92.

Don't understand settings in the TCP/IP dialog box.

Solution

Contact the network administrator to check the TCP/IP settings (IP address, presence of DHCP server, etc.). Also, refer to "Assign IP address" on page 115.

8

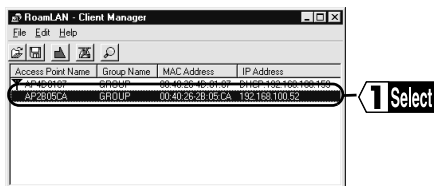
When You Want To...

This chapter describes how to change the target access point and check the MAC address.

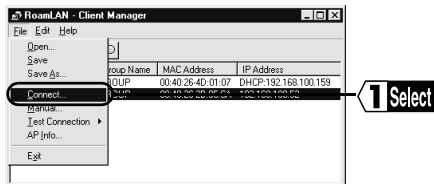
Change target access point

When you move from one cell to another in a wireless network, the target access point must be changed. Follow the steps below to change the target access point.

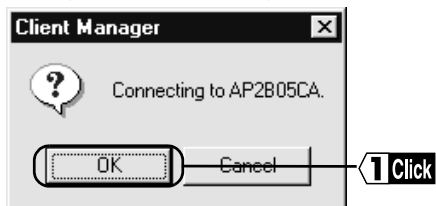
- 1 Click the Start button and select Programs → MELCO WLI-PCM Utility → Client Manager.
- 2 Select the target access point at the destination.



- 3 Select File → Connect...



- 4** Click the OK button.
The target access point is changed.



Check connection using PING command


Follow the steps below to execute the PING command and check that the IP packet reaches the destination correctly.

 **Note** The TCP/IP protocol must be installed to execute the PING command.

- 1 Click the Start button and select Programs → MS-DOS Prompt.
If you are using WindowsNT4.0, select Programs → Command Prompt.
- 2 Enter the PING command as shown below (when the hard disk drive is "C").
C:\>ping XXX.XXX.XXX.XXX
Where "XXX.XXX.XXX.XXX" is the IP address of the target destination.
e.g. When the IP address of the target destination is "192.168.100.123"
C:\>ping 192.168.100.123
- 3 If the devices are connected correctly, the following is displayed.
Pinging 192.168.100.123 with 32 bytes of data:

```
Reply from 192.168.100.123:bytes=32 time=1ms TTL=32
Reply from 192.168.100.123:bytes=32 time<10ms TTL=32
Reply from 192.168.100.123:bytes=32 time=4ms TTL=32
Reply from 192.168.100.123:bytes=32 time<10ms TTL=32
```

If they are not connected correctly, a condition specific error message such as "Request timed out" or "Destination host unreachable" appears. In this case, refer to "Communication between wireless LAN PCs is impossible. No reply is returned when executing the PING command to a wireless LAN PC." on page 109.

 **Note** Connection to the access point cannot be checked by executing the PING command from a wireless LAN PC.

Assign IP address

An IP address must be set for each computer and other devices on the TCP/IP network. There are several rules to observe when assigning an IP address to a computer on the network.

■ Rule 1

The same address cannot be assigned to multiple devices on a single network. The IP address of each device must be unique.

<Example>

Computer A: 192.168.1.1 (255.255.255.0)

Computer B: 192.168.1.2 (255.255.255.0)

Computer C: 192.168.1.3 (255.255.255.0)

⋮

Computer X: 192.168.1.254 (255.255.255.0)

Note The code in the brackets is the sub net mask. If the IP address is set to "192.168.x.x", the sub net mask should be "255.255.255.0".

■ Rule 2

You cannot assign the network start address (XXX.XXX.XXX.0) or end address (XXX.XXX.XXX.255) to a device on the network. The network number is included in the IP address, and communication is impossible if the network number is different.

<Example>

If the sub net mask is "255.255.255.0", devices are regarded to be on the same network when the first 3 elements of the IP address are the same. The IP address represents the network number when the 4th element of the address is "0".

Network A: 192.168.1.0 (network 192.168.1)

Network B: 192.168.2.0 (network 192.168.2)

Network C: 192.168.15.0 (network 192.168.15)

Network D: 192.168.133.0 (network 192.168.133)

Network E: 192.168.202.0 (network 192.168.202)

Networks A through E are recognized as different networks and intercommunication is impossible.

Continued on next page

IP addresses in network A are as follows.

192.168.1.0: Not available for use as IP address (used as the network number.)

192.168.1.1 ~ 192.168.1.254: IP address

192.168.1.255: Not available for use as IP address (used as the broadcast packet)

When the sub net mask of network A is "255.255.255.0", for example, "192.168.1.1" can communicate with "192.168.1.2", but cannot communicate with "192.168.2.1".

■Rule 3

The following IP addresses are generally used for a LAN.

192.168.0.0 ~ 192.168.255.255 (255.255.255.0)

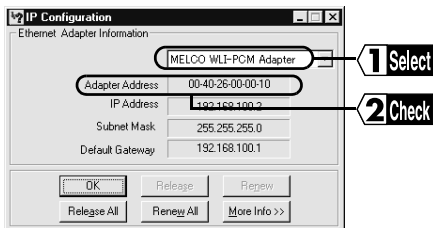
There are a large number of detailed books about TCP/IP available that you can refer to. Be sure to consult your network administrator, if possible, before assigning IP addresses.

Check MAC address

Windows98/95

When TCP/IP is installed, follow the steps below to check the MAC address.

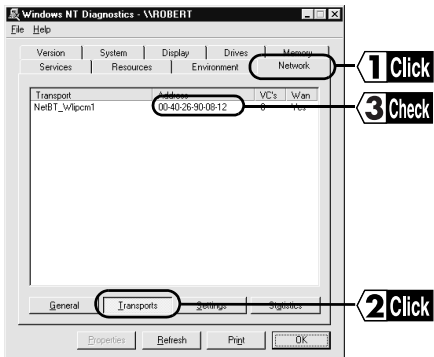
- 1 Click the Start button and select Run....
- 2 Enter "WINIPCFG.EXE" and click the OK button.
The "IP Configuration" dialog box appears.
- 3 Select "MELCO WLI-PCM Adapter". The MAC address is shown in the Adapter Address field.



WindowsNT4.0

Follow the steps below to check the MAC address.

- 1 Click the Start button and select Programs → Administrative Tools (Common) → WindowsNT Diagnostics.
- 2 Click the Network tab and then the Transports button.



9

Appendix

This chapter contains definitions of special terms and the specifications of the WLI-PCM.

Terminology

Networking terms used in this manual are defined below.

■ESS-ID

An identification code to classify computers on the wireless LAN into groups. Computers can directly communicate with each other on the wireless LAN if they have the same ESS-ID (i.e. they are in the same group) and are using the same DS channel. Note that communication is possible only in the same group with the same ESS-ID assigned. The ESS-ID is upper/lower case sensitive and can consist of up to 32 alphanumeric characters, including the under bar (_).

■I/O port address (Input/Output)

A port for communicating information between the CPU and peripheral devices. An I/O port address is assigned to each device in order to determine which port is used by which device.

■IRQ (Interrupt Request)

Requests from all peripheral devices connected to your computer are processed by the CPU, however, the CPU cannot estimate when a request is sent from which device. If the CPU monitors all devices continuously, the monitoring time becomes longer than the processing time, reducing performance. Therefore, each device requests an "interruption" via an IRQ number with an urgent task for the CPU. The CPU recognizes which device is requesting the interruption by its IRQ number and processes the task. After the task is processed, the CPU resumes its normal process.

■LAN (Local Area Network)

A network constructed in a relatively small area such as a single building or campus. Generally based on a data rate of 10 ~100 Mbps.

■MAC address (Media Access Control Address)

Unique physical address assigned to a network card.

The MAC address consists of 6 bytes; the first half is the vendor code and the latter half is the user code. The vendor code is controlled and assigned by the IEEE, while network card manufacturers assign a unique number for the user code. Therefore, the MAC address assigned to your card is not used anywhere else in the whole world. Frames transmitted using Ethernet are based on this address.

■Microsoft network client

Client software for using server services, such as Windows98/95/NT4.0. The protocol used is generally "NetBEUI".

■NetBEUI protocol

Network transport protocol for small- and medium-size LANs. NetBEUI is equivalent to the transport and network protocol of the OSI protocol model. Integrating NetBEUI and NetBIOS ensures an effective communication system in a workgroup LAN. This protocol is supported by Windows98/95/NT4.0.

■Peer to Peer connection

Communication between computers of the same level, performed via LAN or WAN. Different from the server-client system, all computers on the network can allow other users to access and use their resources. In regard to wireless LANs in particular, this connection refers to the direct communication between wireless LAN cards without using access points.

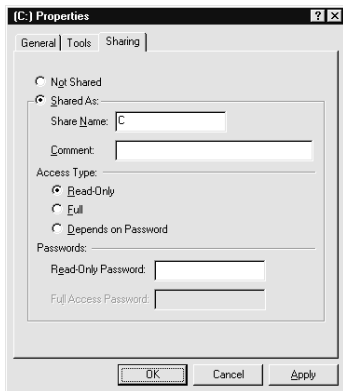
■TCP/IP (Transmission Control Protocol / Internet Protocol)

A protocol corresponding to the network level and transport level of the OSI reference model. This protocol is defined by RFC. Therefore, different terminals can communicate with each other using TCP/IP.

- Includes general application protocols such as TELNET and FTP.
- TCP/IP is the standard protocol for the Internet.

■ Sharing in Windows98/95

Click the icon of the drive to be shared with the right mouse button and click the Sharing tab. The window shown below appears.



Window descriptions

- | | |
|-----------------------|--|
| Not shared: | Check this option to cancel sharing for the drive. |
| Shared As: | Check this option to share the drive. |
| Share Name: | The shared drive name can be changed. |
| Access Type: | Check an option to determine the operation allowed to users. |
| Read Only: | Check this option to make the drive a read-only disk. |
| Full: | Check this option to allow users to write and read data in the drive. |
| Depends on Password: | Check this option to determine operation permission according to the password. |
| Password: | Password for "Access Type". |
| Read-Only Password: | Sets the password for reading only. |
| Full Access Password: | Sets the password for both reading and writing. |

■ User name and password for Windows98/95

When installing the driver and restarting the computer, a dialog box prompting you to enter the network password appears.

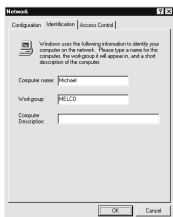
- When using a network, enter the user name and password.
- The user name and password should be set during Windows98/95 setup. When you log in for the first time, enter the user name and password determined during the setup. The password does not need to be entered.
- Multiple users can use a single computer by switching the environment. Each user can log in by entering a new user name and password.

■ Identification window of Windows98/95

Window

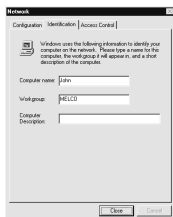
Windows98

Double-click the Network icon and click the Identification tab. The following window appears.



Windows95

Double-click the Network icon and click the Identification tab. The following window appears.



Window descriptions

- | | |
|-----------------------|---|
| Computer name: | Name identifying each computer on the network. A unique name is assigned to each computer. |
| Workgroup: | Name classifying computers on the network. Assign the same name to all the computers when they do not need to be separated into groups. |
| Computer Description: | Supplementary description of the computer. This field may be left blank. |

■ Access point

Device required for a wireless LAN PC to access a computer on a wired LAN. The ESS-ID of the target access point is required when the wireless LAN PC is connected to the access point.

■ Client

Computer that receives services. The client can use the information and services provided by the server.

■ Protocol

Procedures and rules for transmitting data between terminals on a network. For example, when two computers are communicating with each other, several requirements for communication must be determined, such as which one sends what message first, how the other one receives the message and replies to it, the data format, and measures for communication errors. These requirements ensure correct data communication.

■ Resources (system resource)

Generic term for the IRQ, I/O port address, etc. assigned to peripheral devices connected to computers (mouse, keyboard, etc.), LAN board, and LAN card.

Product specifications

Refer to the following table for production specifications.

Conforming standards	ARIB STD-33A (low power data communication system standards)
	IEEE802.11 (wireless LAN standard protocol)
Transmission method	DS-SS (IEEE802.11 compliant), half-duplex
Max. distance between terminals	450 ft outdoors, 150 ft indoors (may vary depending on operating environment)
Compatible computers	IBM AT compatible equipped with PC card slot (type II)
Frequency range	2400 ~ 2483.5 MHz
Data transmission rate	2 Mbps / 1 Mbps (automatically switched)
Security	ESS-ID
Operating voltage	4.5 ~ 5.5 V
Power consumption	Sending 500 mA (Typ)
	Receiving 320 mA (Typ)
Operating temperature	32 ~ 104 °F
Storage temperature	14 ~ 140 °F
Weight	53 g
Dimensions	123.7 (W) x 54 (L) x 4.9 (H) mm (2 1/8" (W) x 3 7/8" (L) x 1/8" (H)) *Not including 11.2 mm antenna
Max. number of wireless terminals	253 (recommended limit of 32)

Note Please refer to the product catalogue or access MELCO INC.'s home page (<http://www.melcoinc.com/>) for the latest product information and applicable models.

Notice

The information in this manual is subject to change without notice.

NEITHER TECHWORKS (DELAWARE), INC. (THE DISTRIBUTOR) NOR MELCO INC. (THE MANUFACTURER) SHALL BE LIABLE FOR TECHNICAL OR EDITORIAL ERRORS OR OMISSIONS CONTAINED HEREIN: OR FOR INCIDENTAL OR CONSEQUENTIAL DAMAGES RESULTING FROM THE FURNISHING, PERFORMANCE OF USE OF THIS MANUAL.

This manual contains information protected by copyright. No part of this manual may be photocopied or reproduced in any form without prior written consent from MELCO INC.

(c) 1998-1999 MELCO INC.

All rights reserved. Printed in Japan.

Windows and Windows NT are trademarks of Microsoft Corporation.

Federal Communications Commission Notice

This equipment has been tested and found to comply with the limits for a Class B digital device, pursuant to Part 15 of the FCC Rules. These limits are designed to provide reasonable protection against harmful interference in a residential installation. This equipment generates, uses, and can radiate radio frequency energy and, if not installed and used in accordance with the instructions, may cause harmful interference to radio communications. However, there is no guarantee that interference will not occur in a particular installation. If this equipment does cause harmful interference to radio or television, which can be determined by turning the equipment off and on, the user is encouraged to try to correct the interference by one or more of the following measures:

- Reorient or relocate the receiving antenna.
- Increase the separation between the equipment and the receiver.
- Connect the equipment into an outlet on a circuit different from that to which the receiver is connected.
- Consult the dealer or an experienced radio/TV technician for help.

Modifications

The FCC requires the user to be notified that any changes or modifications made to this device that are not expressly approved by MELCO INC. (the manufacturer) may void the user's authority to operate the equipment.

**Manufactured by:
MELCO INC. (Japan)
<http://www.melcoinc.com/>**

WLI-PCM User's Manual

18 June, 1999 First revision

PY00-25025-DM10-01