

User Manual
Buffalo AirStation™
Wireless USB 2.0 Adapter
WLI-U2-KG54A1

BUFFALO



Wireless USB 2.0 Adapter

Installation & Configuration

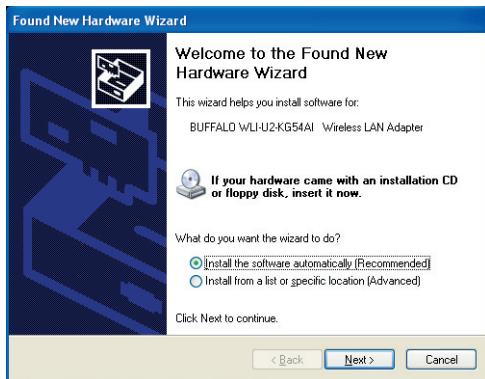
1. *Installing the Wireless USB 2.0 Adapter:*

- ▶ **Insert the USB Adapter into your Laptop or Desktop PC as shown. USB ports may be located on the rear, front or side of your PC depending on the design. If there are multiple ports, choose the port that is free of interference to maximize antenna reception.**



2. Device Discovery:

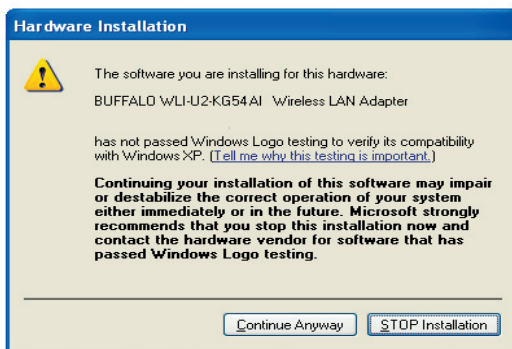
- ▶ **Once inserted, Windows will automatically discover the presence of new hardware. Various popup clouds will appear from the Windows taskbar. During this time, allow Windows and the Wireless USB Adapter to communicate. The process should take about one minute.**



Click Next if the Found New Hardware Wizard appears as shown above.

3. Wireless Adapter Driver Installation:

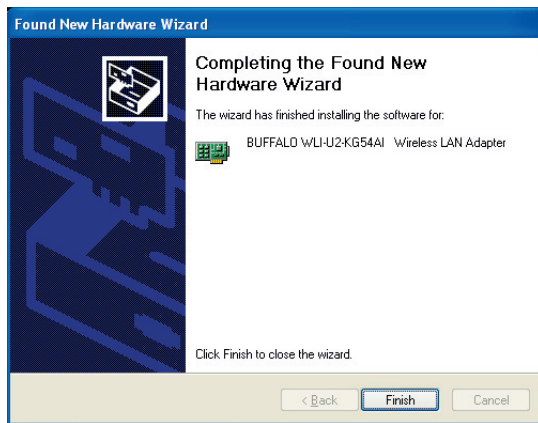
- ▶ **In Windows XP or 2000, the following dialog box may appear as drivers are installed. If so click Yes or Continue Anyway to finish installing the necessary drivers.**



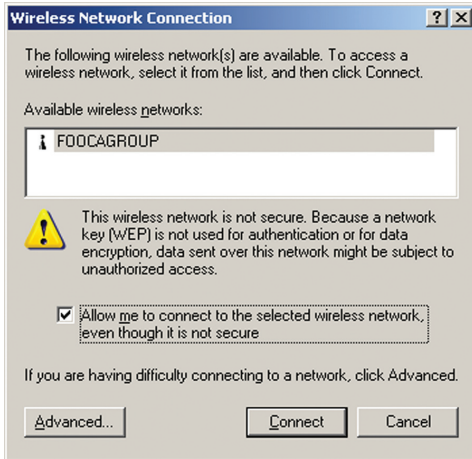
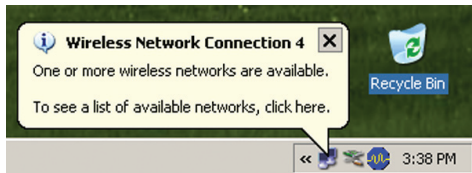
Windows 98SE/ME/2000 users should skip to page 9.

4. Completing Driver Installation for Windows XP:

- ▶ **When the driver has completed installing on a Windows XP PC click Finish.**



If you wish to use Windows Wireless Zero Configuration Service click No on the new dialog box and go on to page 6. Otherwise, click Yes on the new dialog box that will appear to install Buffalo's Client Manager and go on to page 12.



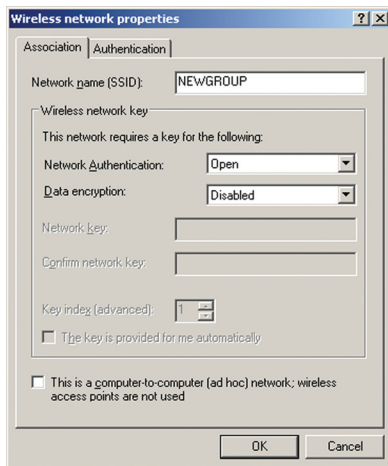
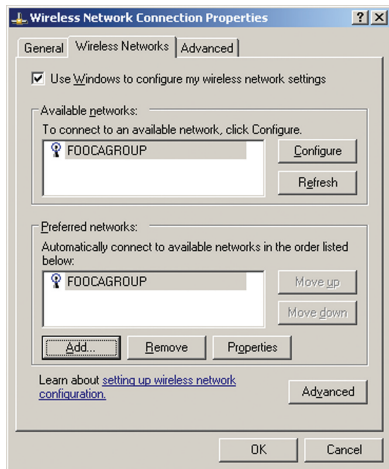
3. Configuring Wireless Zero Configuration Service:

► If the **Wireless Zero Configuration Service** is activated, Windows will scan for available wireless access points once the **Wireless PCI Adapter** is properly installed. If Windows detects one or more access points, a networking icon appears on the task bar. One or more wireless networks are available appears as a caption accompanying the icon.

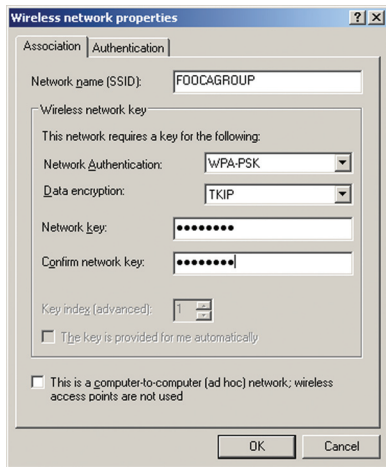
■ **Note:** If the **Wireless Zero Configuration Service** is not functioning, select **Start>Control Panel>Administrative Tools>Services**. Select **Automatic** in the **Startup Type** field of **Wireless Zero Configuration Service** to enable the **Wireless Zero Configuration Service**. The default value of **Wireless Zero Configuration Service** is **Automatic**.

► **Right click the networking icon in the taskbar and select View Available Wireless Networks to display a list of available wireless networks. Select an access point network name or SSID and click the Connect button to establish a connec-**

Using Wireless Zero Configuration Service



- ▶ **Click the Advanced button to enter an SSID network name or WEP/WPA encryption key, if either is necessary. To add an SSID network name that is not**



▶ To configure a WEP/WPA encryption key, select the appropriate wireless network and click the Configure button.

▶ From the pull down menu, select the appropriate Network Authentication and Data Encryption for the wireless network. Enter and confirm the Network Key and Key Index. Click the OK button when finished.

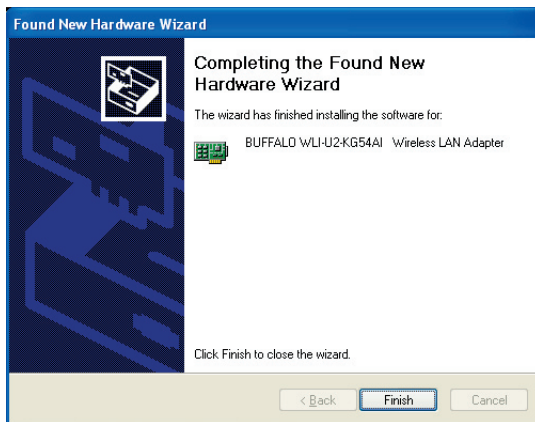
■ Note: Buffalo Technology recommends that users of the Wireless Zero Configuration Service upgrade to the latest version freely available at: <http://www.microsoft.com>.

For advanced support in using Window's XP's Wireless Zero Configuration Service, refer to the Buffalo Support Web Site: <http://www.buffalotech.com/wireless/support>

Skip to Page 12 if you are not using Windows XP or prefer not to use Windows XP's Wireless Zero Configuration Service.

4. Completing Driver Installation for Windows 98SE/ME/2000:

- ▶ **When the driver has completed installing on a Windows XP PC click Finish.**



Click Yes on the new dialog box that will appear to install Buffalo's Client Manager.

Placeholder

Placeholder

Client Manager

Use Client Manager to configure your wireless network. Use Client Manager to survey and connect to available access points, enable and use WEP/WPA encryption, and create connection profiles.

■ **Note: Client Manager does not function properly if the Windows XP Wireless Zero Configuration Service is enabled.**

Installing Client Manager

▶ **Once the InstallShield Wizard launches, click the Next button to begin the software installation.**