

User Manual - AirStation Draft-N WZR2-G300N

NFINITI™ Wireless Router & AP



Introduction	3
Initial Setup	4
Configuration Tool Login	8
Connecting Wireless Clients	10
Using the Configuration Tool	11
AOSS	15
Router/Access Point Mode Switch	17
Encryption and Security	18
Connecting to an Existing Network.	23
Specifications	24
Troubleshooting	27
Glossary	30
FCC Information	37
Warranty	43
Contact Information (USA).	44
Contact Information (Europe).	45
GPL Information (USA).	46
GPL Information (Europe).	47

Work and play - further and faster! Your AirStation Nfiniti combines Ethernet networking with extended wireless range and speed. It offers excellent compatibility with most wireless clients, giving superb performance with Wireless-N, Wireless G, and legacy Wireless-B clients. For best overall performance, use with Buffalo Technology Nfinity wireless clients.

System Requirements:

- A high-speed (Broadband) Internet connection or existing local area connection.
- A computer with a network connection (wired or wireless) and a good web browser. The screenshots in this manual were taken with Firefox, but Netscape and Internet Explorer are also supported in versions 4.5 or later, and Safari 1.0 and later are supported with Macintosh OS X 10.2 and later.

Package Contents:

- WZR2-G300N AirStation with built-in antennas
- AC adapter
- CAT5 LAN cable
- Utility CD with Manual
- Quick Setup Guides
- Warranty Statement

Begin by finding a good place to set up your router/access point. Some things to consider:

- You'll need to be able to plug your internet connection into it, so it should go within reach of the LAN cable from your DSL or Cable modem. You'll also want a power outlet nearby.
- Keep the access point as central in your work area as possible. Signal strength and speed fall off with distance.
- Higher is often better. For instance, set it up on the top shelf of a bookcase rather than the bottom one, if possible.

Do you need a password or other information to log in to your internet connection?

Many DSL connections require information like global IP address, subnet mask, default gateway address, DNS server address, or PPPoE parameters in order to connect. Cable modems usually don't require extra information. If you have a DSL internet connection, make sure that you have any necessary information handy before you continue. Your Internet Service Provider can give you this information if you don't know it.

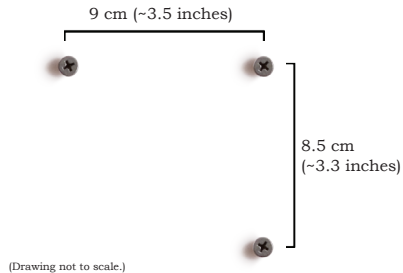


Your AirStation may be placed horizontally or mounted vertically on a wall.



The antennas will usually work best if oriented vertically.

For wall mounting, screw three screws into the wall as shown below.



Connecting your AirStation



To initially configure your router, you'll use a wired connection to your computer. Once you've connected to the internet through the router, you may switch to a wireless connection if desired.

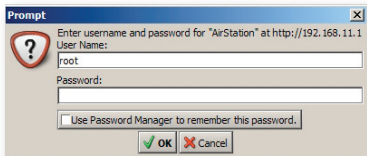
The computer used to configure the AirStation should be set to obtain an IP address automatically using a DHCP server (this is the default). The WZR2-G300N has a default LAN IP address of 192.168.11.1 and Subnet Mask of 255.255.255.0.

1. Power down the Cable or DSL modem and the computer which will be used to configure the AirStation router.
2. Plug the Cable or DSL modem's Ethernet cable into the AirStation's WAN port. Initially, you may need to unplug this cable from your computer, hub or other router.
3. Plug the provided Ethernet cable into a LAN port on the AirStation and plug the other end into your computer's Ethernet adapter (NIC).
4. *Important: turn everything on in the correct order!!* Power on your cable or DSL modem and wait one full minute, then power on the AirStation router and wait one full minute, and finally power on the computer which will be used to configure the AirStation.



Launch a web browser on the computer that you're using to configure the AirStation.

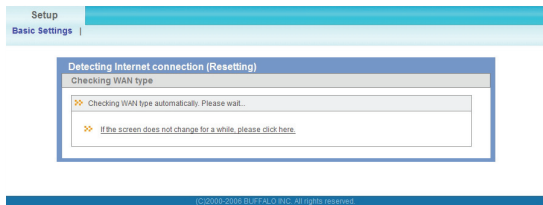
Enter *192.168.11.1* into the URL field. Naturally, if you change your AirStation's IP address, you'll have to enter the new address instead.



A window will open, prompting you to enter a User ID and Password.

Enter *root* as the User name and leave the password field *blank*.

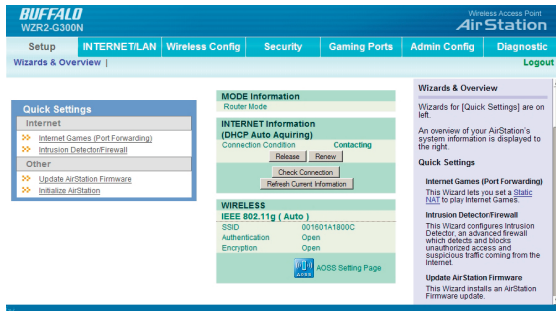
Your AirStation's SmartRouter technology will determine the type of internet connection you have automatically, and ask you for any needed information. If your ISP assigns IPs automatically (most cable providers do), their DHCP server will give your router an IP address. If additional login information is required to connect to the internet, the wizard will ask for it. Enter any required login information if asked. Contact your DSL provider for any missing login information.



Congratulations! You are now connected to the internet. Open a familiar web page to make sure everything is working correctly.



Connecting Wireless Clients to the Access Point

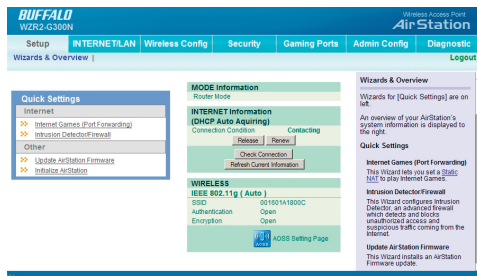


To connect wireless devices to the AirStation, you may either enter the SSID and encryption key manually, or you can use AOSS. For more information on AOSS, see pages 14 and 15.

Consult your wireless clients' manuals for instructions on configuring them manually. You can get SSID and encryption information from the AirStation's

initial setup screen, as shown above. By default, encryption is *not enabled* ("open").

If you prefer to use encryption and/or a different SSID, you may change these default settings under the *Wireless Config* Tab.



You can get back to the Setup page from anywhere in the configuration screens by clicking on the *Setup* tab in the top left corner. From here, you can rerun the Internet Connection Wizard, change your wireless SSID and channel, and choose your encryption type under Basic Settings. The *Wireless* section shows your SSID and encryption settings.

You can also configure *port mapping* for your internet games, configure your *Firewall*, update your AirStation's firmware, and reset your AirStation to factory settings. As you explore the configuration tool, you'll see that context sensitive help is available on the right side of each page.

The menus in the Configuration Tool let you change your AirStation's settings. To navigate settings, choose a *category* at the top of the page and then a *submenu* below. Settings will appear on the left, help files on the right. This example shows the Internet/LAN category with the DHCP submenu item selected.

Category
Tabs

Individual
Settings

The screenshot displays the Buffalo AirStation configuration interface. At the top, there are navigation tabs for 'Internet/LAN', 'Wireless Config', 'Security', 'Gaming Ports', 'Admin Config', and 'Diagnostic'. The 'Internet/LAN' tab is selected, and within it, the 'DHCP Lease-IPv4' sub-tab is active. The main content area is titled 'DHCP Lease Settings' and includes sections for 'Add Client Information' with input fields for IP and MAC addresses, and 'Current DHCP Client Information' with a table listing client details. A 'HELP' button is visible next to the 'Current DHCP Client Information' section. On the right side, a help panel provides instructions for manual IP assignment and client information editing.

Submenus

Help and
Instructions

The following pages show examples of some screens from the configuration utility.