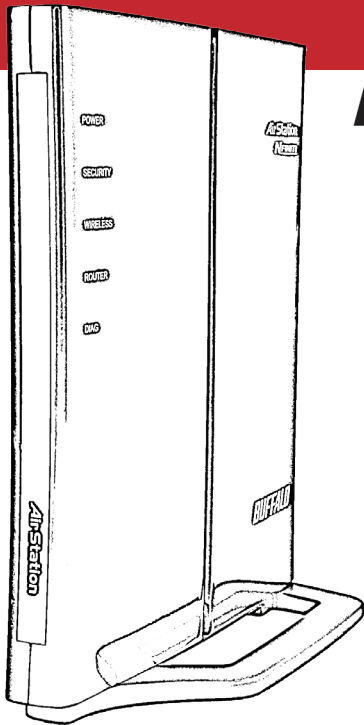


User Manual - AirStation WHR-G300N

NFINITI™ Wireless N Router & AP



Introduction	3
Initial Setup	4
Configuration Tool Login	8
Connecting Wireless Clients	10
Using the Configuration Tool	11
AOSS	15
Router/Access Point Mode Switch	17
Encryption and Security	18
Connecting to an Existing Network.	23
Specifications	24
Troubleshooting	27
Glossary	30
FCC Information	37
Warranty	43
Contact Information (USA).	44
Contact Information (Europe).	45
GPL Information (USA).	46
GPL Information (Europe).	47

Work and play - further and faster! Your AirStation Nfiniti combines Ethernet networking with extended wireless range and speed. It offers excellent compatibility with most wireless clients, giving superb performance with Wireless-N, Wireless G, and legacy Wireless-B clients. For best overall performance, use with Buffalo Technology Nfiniti wireless clients.

System Requirements:

- A high-speed (Broadband) Internet connection or existing local area connection.
- A computer with a network connection (wired or wireless) and a web browser. The screenshots in this manual were taken with Firefox, but current versions of other browsers such as Internet Explorer also work fine. On Macs, Safari 1.0 and later are supported with Macintosh OS X 10.28 and later.

Package Contents:

- WHR-G300N AirStation with built-in antennas
- AC adapter
- CAT5 LAN cable
- Screws for wall mounting
- Utility CD with Manual
- Quick Setup Guide
- Warranty Statement

Begin by finding a good place to set up your router/access point. Some things to consider:

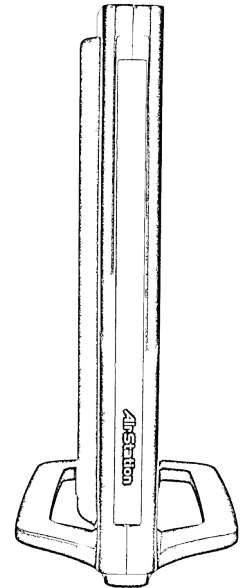
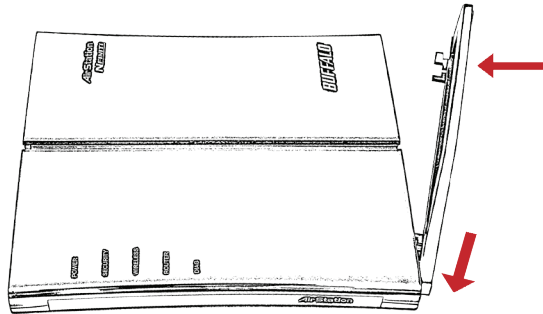
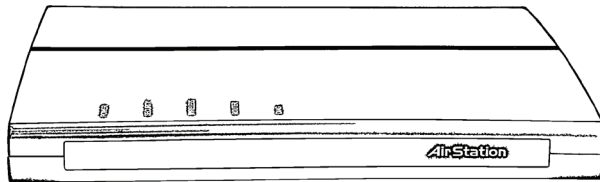
- You'll need to be able to plug your internet connection into it, so it should go within reach of the LAN cable from your DSL or Cable modem. You'll also want a power outlet nearby.
- Keep the access point as central in your work area as possible. Signal strength and speed fall off with distance.
- Higher is often better. For instance, set it up on the top shelf of a bookcase rather than the bottom one, if possible.

Do you need a password or other information to log in to your internet connection?

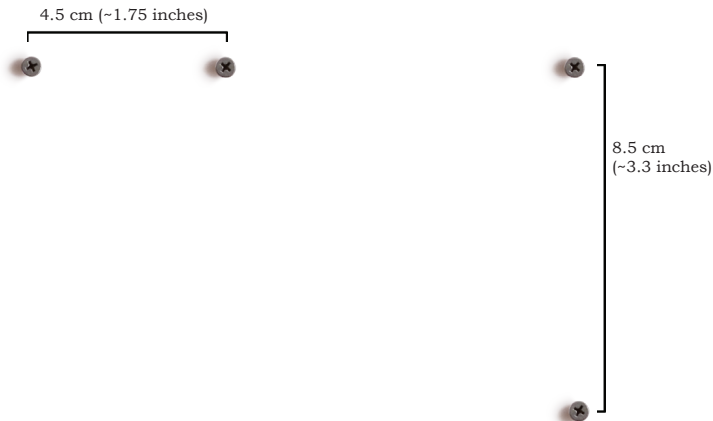
Many DSL connections require information like global IP address, subnet mask, default gateway address, DNS server address, or PPPoE parameters in order to connect. Cable modems usually don't require extra information. If you have a DSL internet connection, make sure that you have any necessary information handy before you continue. Your Internet Service Provider can give you this information if you don't know it.

Placing Your AirStation

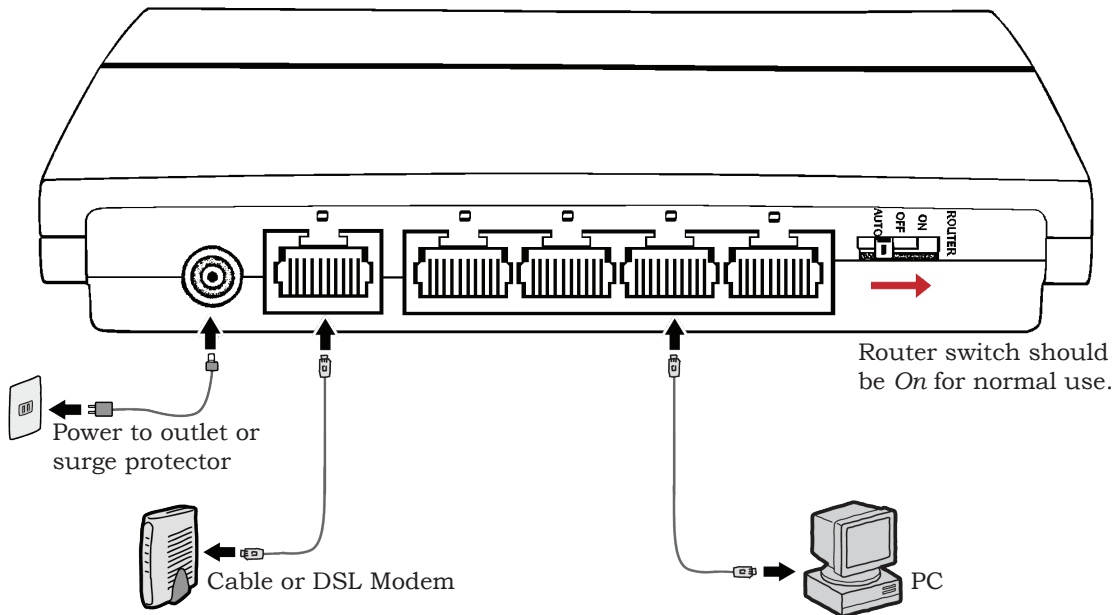
Your AirStation may be placed horizontally, or vertically with its stand attached. You can also mount it on the wall.



For wall mounting, screw two of the included wall-mounting screws into the wall in either of the configurations shown below. Slots on the back of the AirStation will fit over a pair of screws in either configuration.



Connecting your AirStation



To initially configure your AirStation, you'll use a wired connection to your computer. Once you've connected to the internet through the router, you may switch to a wireless connection if desired.

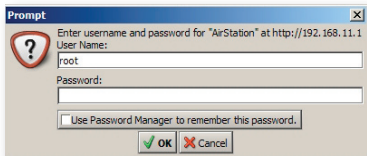
The computer used to configure the AirStation should be set to obtain an IP address automatically using a DHCP server (this is the default). The WHR-G300N has a default LAN IP address of 192.168.11.1 and Subnet Mask of 255.255.255.0.

1. Power down the Cable or DSL modem and the computer which will be used to configure the AirStation router.
2. Plug the Cable or DSL modem's Ethernet cable into the AirStation's WAN port. Initially, you may need to unplug this cable from your computer, hub or other router.
3. Plug the provided Ethernet cable into one of the four LAN ports on the AirStation and plug the other end into your computer's Ethernet adapter (NIC).
4. *Important: turn everything on in the correct order!!* Power on your cable or DSL modem and wait one full minute, then power on the AirStation and wait one full minute, and finally power on the computer which will be used to configure the AirStation.



Launch a web browser on the computer that you're using to configure the AirStation.

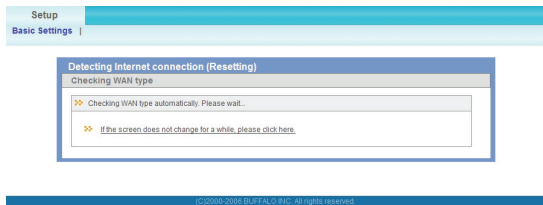
Enter *192.168.11.1* into the URL field. Naturally, if you change your AirStation's IP address, you'll have to enter the new address instead.



A window will open, prompting you to enter a User ID and Password.

Enter *root* as the User name and leave the password field *blank*.

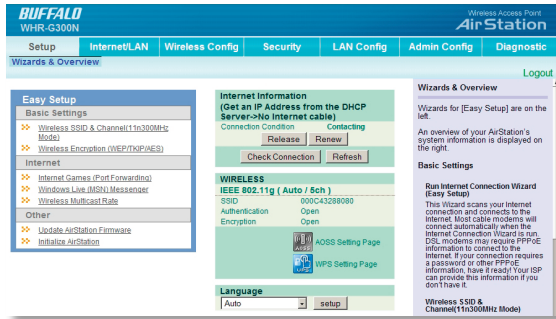
Your AirStation's SmartRouter technology will determine the type of internet connection you have automatically, and ask you for any needed information. If your ISP assigns IPs automatically (most cable providers do), their DHCP server will give your router an IP address. If additional login information is required to connect to the internet, the wizard will ask for it. Enter any required login information if asked. Contact your DSL provider for any missing login information.



Congratulations! You are now connected to the internet. Open a familiar web page to make sure everything is working correctly.



Connecting Wireless Clients to the Access Point

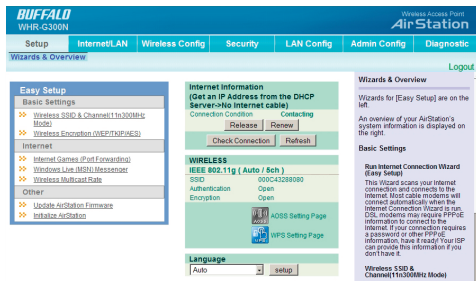


To connect wireless devices to the AirStation, you may either enter the SSID and encryption key manually, or you can use AOSS. For more information on AOSS, see pages 14 and 15.

Consult your wireless clients' manuals for instructions on configuring them manually. You can get SSID and encryption information from the AirStation's

initial setup screen, as shown above. By default, encryption is *not enabled* ("open").

If you prefer to use encryption and/or a different SSID, you may change these default settings under the *Wireless Config* Tab.



You can get back to the Setup page from anywhere in the configuration screens by clicking on the *Setup* tab in the top left corner. From here, you can rerun the Internet Connection Wizards, change your wireless SSID and channel, and choose your encryption type under Basic Settings. The *Wireless* section shows your SSID and encryption settings.

You can also configure *port forwarding* for your internet games, configure your *UPnP settings*, update your AirStation's firmware, and reset your AirStation to factory settings. As you explore the configuration tool, you'll see that context sensitive help is available on the right side of each page.

The menus in the Configuration Tool let you change your AirStation's settings. To navigate settings, choose a *category* at the top of the page and then a *submenu* below. Settings will appear on the left, help files on the right. This example shows the Internet/LAN category with the LAN submenu item selected.

Category
Tabs

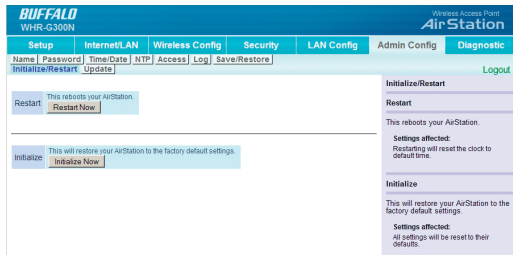
Individual
Settings

The screenshot displays the Buffalo AirStation configuration interface. At the top, there are navigation tabs for 'Setup', 'Internet/LAN', 'Wireless Config', 'Security', 'LAN Config', 'Admin Config', and 'Diagnostic'. Below these, a sub-menu bar includes 'Internet', 'PPPoE', 'DNS', 'LAN', 'NAT', and 'Route'. The 'LAN' sub-menu is selected. The main content area is divided into two columns. The left column contains configuration fields for 'LAN Side IP Address' (IP Address: 192.168.11.1, Subnet Mask: 255.255.255.0), 'DHCP Server Function' (checked 'Enable'), 'DHCP IP Address Pool' (192.168.11.2 for up to 64 addresses), and 'LAN Side IP Address (For IP Unnumbered)' (IP Address: 192.168.11.1, Subnet Mask: 255.255.255.0). There are 'Advanced Settings' and 'Display' checkboxes, and an 'Apply' button at the bottom. The right column contains 'LAN Side Ethernet Settings' with instructions on configuring LAN IP, Subnet Mask, and local DHCP Server settings. It also includes a 'Note' about existing LAN configurations and a 'LAN Side IP Address' section with instructions on setting a unique IP address.

Submenus

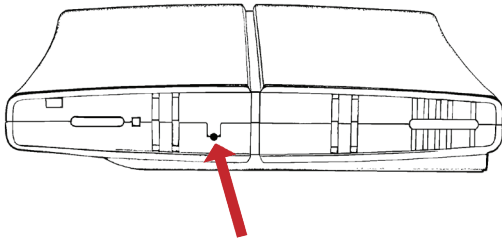
Help and
Instructions

The following pages show examples of some screens from the configuration utility.

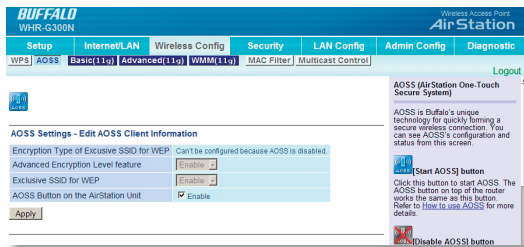


The Initialize/Restart page can be reached by choosing the *Admin Config* category tab and then clicking on the *Initialize/Restart* submenu.

Click *Restart Now* from this page to restart your AirStation. Click *Initialize Now* to restore your AirStation to factory defaults and restart it.



You may also initialize your AirStation by holding down the *Reset* button on the bottom for 3 seconds with a straightened-out paper-clip or similar object.



You can get to this page by selecting the *Wireless Config* category and choosing the AOSS submenu.

The blue AOSS button at the top left of the page has the same function as the physical AOSS button on the top of the router: it initiates the AOSS process.

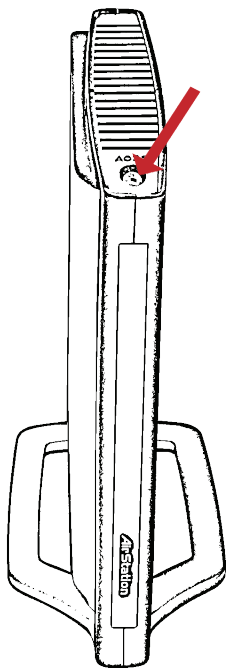
If all your clients support AOSS, it's very simple to set them up. Press the AOSS

button on the router, or the one on this page, and then push the AOSS button on the client device.

Each client device will have to be set up separately. Wait for each AOSS process to finish before starting the next one.

You can also activate AOSS by pushing the button on the top of your AirStation (see page 16). Consult your client device's documentation for the location of its AOSS button.

If you've used AOSS to configure some wireless clients, and now want to add other wireless clients that don't support AOSS to your network, this screen will give you the information you need to connect them manually.



AOSS (AirStation One-Touch Secure System) is a simple system for configuring your wireless network securely. If your router and your client device are installed and both support AOSS, then making a secure wireless connection between them is very easy.

Push the AOSS button on the top of your router and hold it in for a few seconds. The AOSS light will begin to flash amber. You now have two minutes to push the AOSS button on your client device and finish the connection.

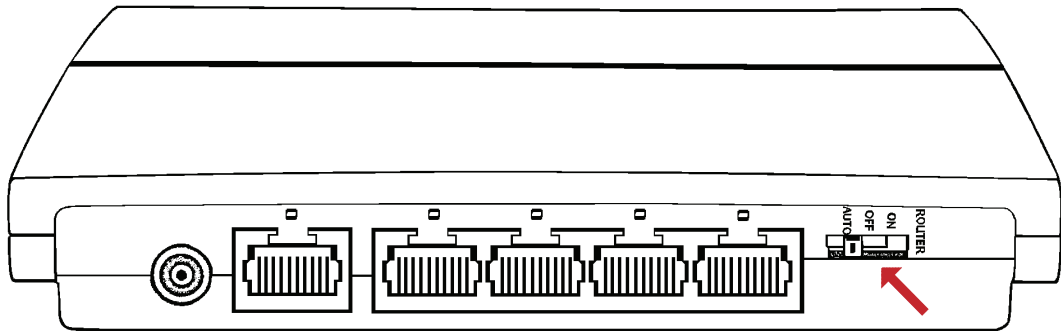
An AOSS compatible standalone client device will probably have a little red button labeled “AOSS” on it. Push the button! About 15 seconds later, you’ll have a secure network connection.

If your client device is a PC card, CardBus, or PCI adaptor, the AOSS button will probably be in its *Client Manager Software*. Check your client device’s user manual for instructions on where to push or click the AOSS button.

After you’ve pressed both buttons, it will take about 15 seconds for the connection to complete. When it’s finished, the AOSS light will glow a solid amber. You now have a secure network connection!

Some things to keep in mind with AOSS:

- Only one AOSS wireless client adapter can be configured with the AOSS router at a time. The buttons will need to be re-pressed to connect each additional AOSS wireless client adapter.
- It is not necessary to AOSS client devices that have already been configured via AOSS, unless significant changes have been made to the wireless network.
- Do not attempt to configure two separate AOSS networks at the same time, as it may cause undesired configurations.
- If an undesired client has connected via AOSS, it can be disconnected from within the WHR-G300N's advanced configuration menus.
- Even if your client device doesn't officially support AOSS, you may still be able to use AOSS if you install Buffalo's Client Manager software on your computer. It works with most client devices, including many made by other manufacturers. You can download it from www.buffalotech.com.

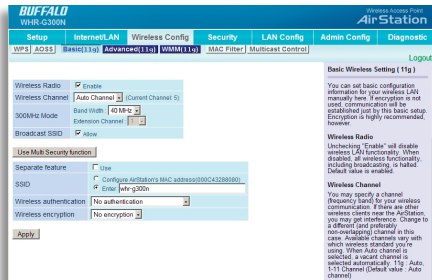


This AirStation supports quickly changing the product from a full wireless router to a simple access point.

Put your Airstation into Access Point Mode by moving the “ROUTER” switch on the bottom of your AirStation from ON to OFF. This changes the default IP address of the AirStation from 192.168.11.1 to 192.168.11.100, and DHCP, NAT, and the WAN port are disabled. All router functionality is disabled, and the WHR-G300N becomes a simple access point.

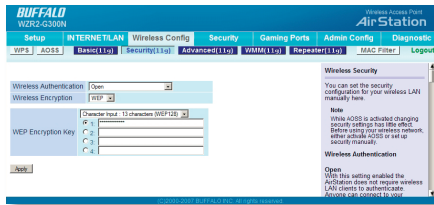
With the switch in the AUTO position, the AirStation serves as a 5 port switch, with IP addressing handled by an external UPnP DHCP server. You will need an external UPnP DHCP server to use this mode, or manually assign all IP addresses.

To use the AirStation as a normal wireless router, this switch must be the (ON) position.



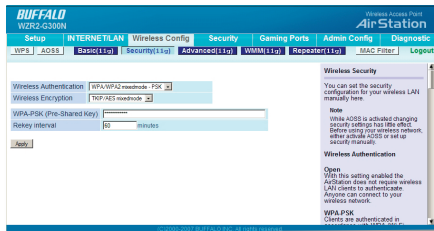
By default, encryption is not enabled on the AirStation unless you used AOSS to perform your setup. Anyone within range can easily connect to your wireless network. This might not be what you want.

Buffalo recommends enabling encryption and setting a password for access to your network. This is easy to configure from within the AirStation's configuration tool. From the opening page, select *Wireless Config* Tab, select the *Basic* submenu.



Many kinds of encryption are available. WEP works with almost everything. WPA2-PSK is much more secure. Choose the strongest method of encryption that works with all of your wireless devices.

If you must use WEP, it is available under “Wireless Encryption”.



Enter a network key (“password”) for this connection. Write down your password and put it in a safe place. You will not be able to connect wireless devices to your network without this password.