

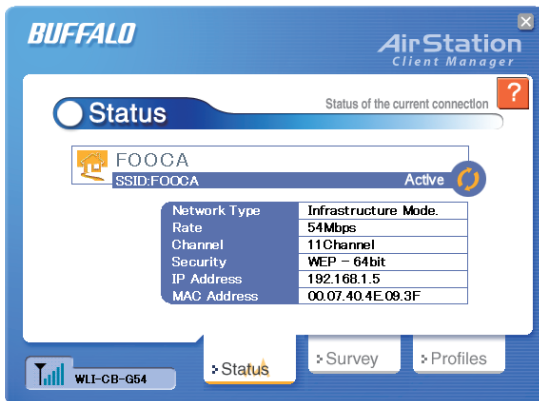
▶ On the Wireless LAN Connection Screen, leave the 'acquire IP automatically' checked unless your wireless adapter is set with a static IP address.

- Use the pull down menu to select your Access Point's security and then enter the appropriate WEP or WPA key(s) into the table. Select 'No Encryption' if you do not require encryption.

■ NOTE: For more information about using WEP and WPA, please refer to the documentation that came with your Access Point/Wireless Router

- If you would like to save these settings as a stored profile, leave the 'Save settings as a profile' box checked.

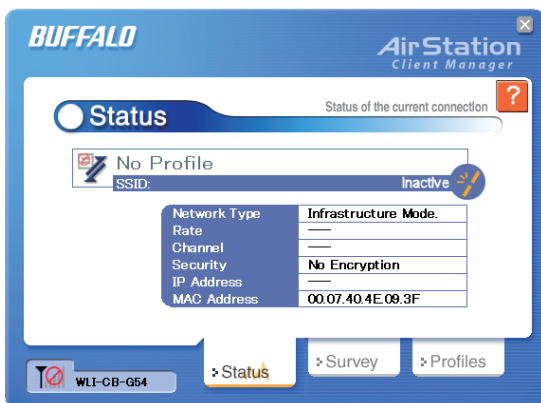
- Click on 'Connect'



▶ The status screen will now show details of your connection. You may now close the AirStation Client Manager - you will stay connected. At any time you would like to change settings, re-launch Client Manager.

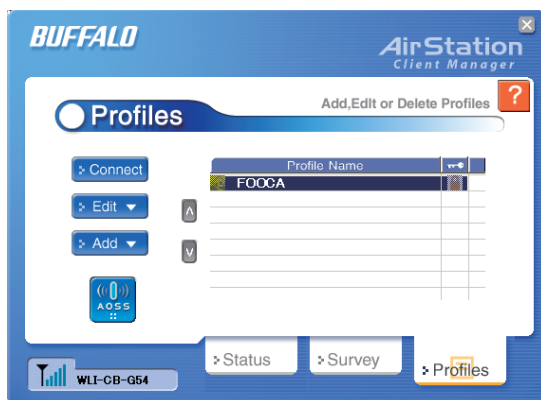
Buffalo AOSS Supplement: Connecting to your Wireless LAN using AOSS (Client Manager)

■ NOTE: AOSS (AirStation One Touch Secure System) automatically creates a secure connection to your AOSS Access Point. You must have a Buffalo AOSS enabled Access Point or Router to use AOSS within client manager.

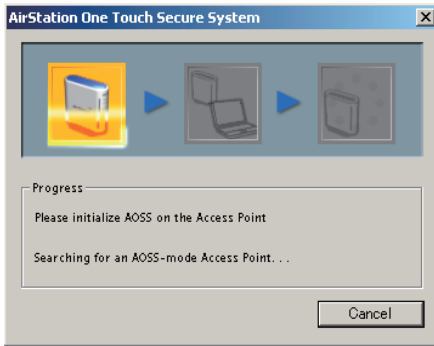


▶ Access Client Manager by right clicking on the Icon in your System 'Tray', or by launching **Programs => Buffalo => AirStation Utility => Client Manager2.**

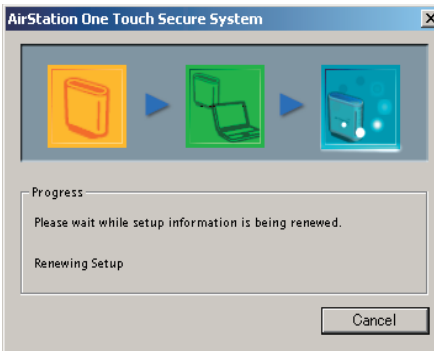
▶ From the Main Status Screen, Select the 'Profiles' tab.



▶ Click on the **AOSS** button to initiate your AOSS session.



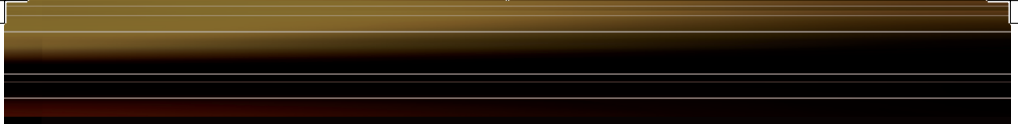
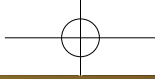
► You will receive a message prompting you to initiate AOSS on your Access Point - This is typically done by Pressing the **AOSS** button on the Access Point. Do this now if you have not previously done so.



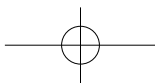
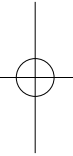
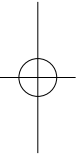
► AOSS will locate the Access Point and automatically configure a secure connection, using the highest security level available for the two devices.



► A confirmation page will appear momentarily. You are now connected and can close client manager without losing your connection. If you wish to change settings, relaunch Client Manger.



MEMO

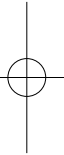




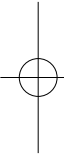
Buffalo Technology Technical Support

▶ Web	USA	http://www.buffalotech.com/wireless
	EUROPE	http://www.buffalo-technology.com
	CHINA	http://www.buffalo-china.com
	TAIWAN	http://www.buffalo-tech.com.tw
	KOREA	http://www.buffalotech.co.kr

FCC Compliance Statement - This device complies with Part 15 of the FCC Rules. Operation is subject to the following two conditions: (1) This device may not cause harmful interference, and (2) this device must accept any interference received, including interference that may cause undesired operation.



R&TTE Compliance Statement - This equipment complies with all the requirements of the DIRECTIVE 1999/5/EC OF THE EUROPEAN PARLIAMENT AND THE COUNCIL of 9 March 1999 on radio equipment and telecommunication terminal equipment and the mutual recognition of their conformity (R&TTE). See the user manual for the complete statement.



Copyright © 2004 Buffalo Technology, Inc. All Rights Reserved.

Buffalo Technology (USA) Inc., is part of BUFFALO INC., the global manufacturers of IT peripherals, including memory, networking, and multimedia products, inside many of the world's computers. All trademarks are property of their respective owners.

Buffalo Inc. declares that WLI-USB-B11 (FCC ID: FDI-09101793-0) is limited in [CH1~CH11 by specified firmware controlled in U.S.A.

Federal Communication Commission Interference Statement

This equipment has been tested and found to comply with the limits for a Class B digital device, pursuant to Part 15 of the FCC Rules. These limits are designed to provide reasonable protection against harmful interference in a residential installation. This equipment generates, uses and can radiate radio frequency energy and, if not installed and used in accordance with the instructions, may cause harmful interference to radio communications. However, there is no guarantee that interference will not occur in a particular installation. If this equipment does cause harmful interference to radio or television reception, which can be determined by turning the equipment off and on, the user is encouraged to try to correct the interference by one of the following measures:

- Reorient or relocate the receiving antenna.
- Increase the separation between the equipment and receiver.
- Connect the equipment into an outlet on a circuit different from that to which the receiver is connected.
- Consult the dealer or an experienced radio/TV technician for help.

FCC Caution: To assure continued compliance, any changes or modifications not expressly approved by the party responsible for compliance could void the user's authority to operate this equipment.

This device complies with Part 15 of the FCC Rules. Operation is subject to the following two conditions: (1) This device may not cause harmful interference, and (2) this device must accept any interference received, including interference that may cause undesired operation.

IMPORTANT NOTE:

FCC Radiation Exposure Statement:

This equipment complies with FCC radiation exposure limits set forth for an uncontrolled environment. This equipment should be installed and operated with minimum distance 20cm between the radiator & your body.

This transmitter must not be co-located or operating in conjunction with any other antenna or transmitter.