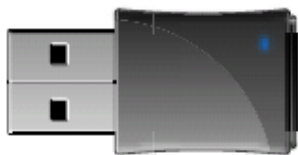


***User Manual - AirStation WLI-UC-GN***  
***Wireless N USB Adapter/Router***

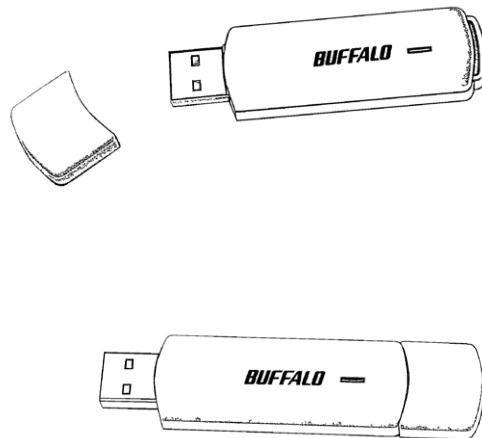


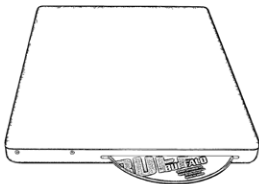
Introduction.....	3
Installation .....	4
Using Windows Zero Config.....	7
Using Client Manager 3.....	8
Using AOSS .....	9
Router Mode .....	12
Connecting Your Nintendo DS® .....	14
Connecting Your Nintendo Wii® .....	16
Connecting Your Sony PSP® .....	19
Connecting Your Sony Playstation 3® .....	21
Specifications.....	23
FCC/CE Information.....	24
Contact Information.....	38

Congratulations on your purchase! The AirStation WLI-UC-GN Turbo G wireless USB Adapter connects your notebook computer or desktop PC to a 2.4 GHz 802.11g or b network. It can also serve as an access point for connecting AOSS compatible wireless devices to your existing network.

## Package Contents

- WLI-UC-GN USB Adapter
- Utility CD with Manual
- Quick Setup Guide
- Warranty Statement

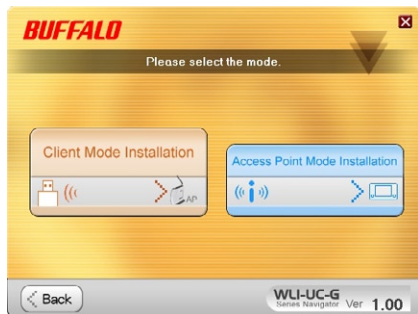




Insert the AirNavigator CD into the CD-ROM drive of your computer. Do not insert the USB key into a USB port yet.

This window will open on your desktop.  
Select *Begin Installation*.





The WLI-UC-GN may be installed as either a wireless client or a wireless router.

Choose *Client Mode Installation* if you want to add a wireless client to your computer, allowing it to connect to existing wireless networks. Turn to the next page for instructions on Client Mode Installation.

Choose *Access Point Mode Installation* if you want to configure the WLI-UC-GN as a simple wireless access point for connecting AOSS-compatible devices such as game consoles. Access Point Mode Installation instructions continue on page 12.




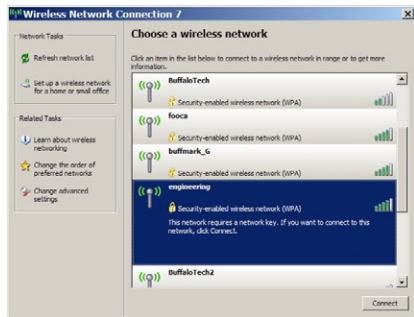
To install drivers and use the wireless connection tool built-in to Windows, click *Install*.

Included on the disk is Buffalo's Client Manager 3 software. To install it, click the checkbox beside it in the Software Option List and then click *Install*. Client Manager 3 includes the option of automatically connecting to AOSS or WPS devices.

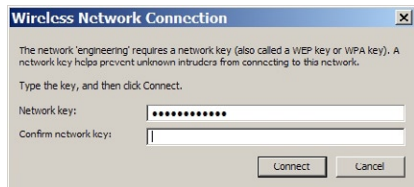


Click *Next* to step through the installation wizards. When the wizard asks you to insert your device, plug the AirStation WLI-UC-GN in to a USB port on your computer. Drivers will install automatically, and if you checked its box, Client Manager 3 will install as well. When the wizard is complete, click *Finish*.


To use Windows' built-in wireless utility, click on its icon  in the systray. Zero Config will open.

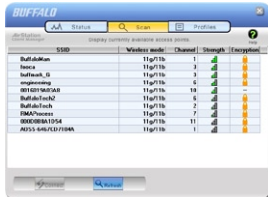


All available wireless networks will be listed. Click on your network to highlight it and then click *Connect*.



If your network requires a network key or password to connect, enter it twice. Click Connect. When the wireless icon in the systray changes to , you are connected to the wireless network.

If you installed Buffalo's Client Manager 3 software, then you will use it to connect instead of Windows Zero Config. Click on its  icon in the systray to open Client Manager.



Click on one of the three buttons up top to navigate to the three different sections of Client Manager. The *Scan* tab shows a list of available wireless networks. Highlight one and click *Connect* at the bottom to connect to that network.

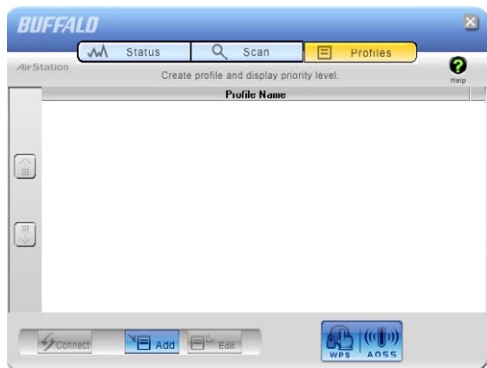


The *Status* tab shows information about your current wireless connection.




The *Profiles* tab lets you create, store, and prioritize common wireless connections. The AOSS button is also located here.





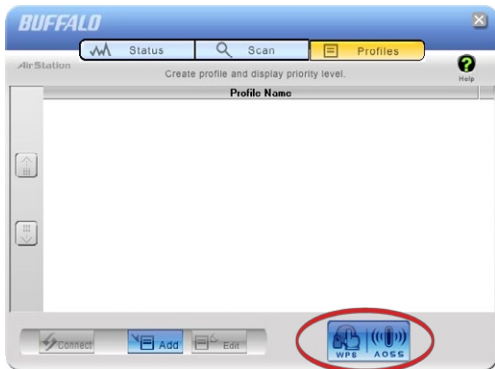
then AOSS will let you connect the WLI-UC-GN to your wireless network, easily and securely.

Your router or access point must support AOSS to use it. If you would rather configure your wireless connection manually, select the *Scan* tab in Client Manager to scan for available networks.

Start Client Manager by double clicking on the black antenna icon  in your systray, or by launching it from your Start Menu: Programs >> Buffalo >> AirStation Utility >> ClientManager3.

**AOSS** (AirStation One-Touch Secure System) is a simple system for connecting wireless clients to an access point while enforcing the most secure possible connection encryption type. Users no longer need to worry about choosing the proper security protocols, IP addresses, or SSID. AOSS determines the optimal connection and configures itself in seconds.

Your WLI-UC-GN has its AOSS button in the Client Manager software. If your router or access point supports AOSS,



- From the Status Screen, select the *Profiles* tab.
- Initiate AOSS by clicking the blue AOSS button on the Client Manager's screen. The AOSS wizard will appear.
- Now, press the AOSS button on your access point. Hold it down until the AOSS LED on the access point begins to flash (1-3 seconds).



Once AOSS is complete (about 30 seconds), the connection is archived as a profile for later use. To minimize Client Manager to the system tray, click the 'X' in the top right corner.

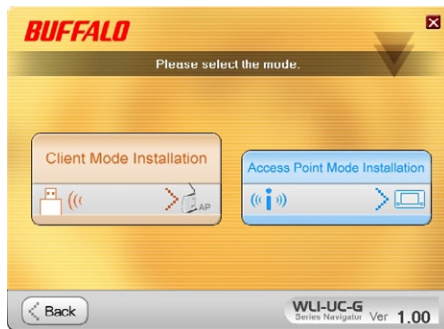
## Notes:

AOSS will scan for an AOSS partner for about two minutes. If it times out before finding one, just press the AOSS buttons again.

Output power is reduced to 25% of normal during AOSS for security reasons. If you're having trouble making an AOSS connection, temporarily move the devices closer together.

AOSS will automatically use the highest level of security available for all currently connected wireless devices.

If you have trouble connecting with AOSS, temporarily disable all personal firewalls on your PC, such as ZoneAlarm or Microsoft Personal Firewall. These programs may be re-enabled after AOSS has finished. Also, make sure that any other wireless client manager software (including Windows XP's Zero Configuration Service) is disabled before using Client Manager.




Besides its wireless client capability, the WLI-UC-GN can function as a wireless access point. If your computer already has a connection to the internet, and you want to connect AOSS-compatible devices wirelessly, then choose *Access Point Mode* during installation. Note: If you have firewall or antivirus software running on the computer, temporarily disable it before continuing.



Click *Install* to continue. Continue clicking *Next* to step through the installation wizard. When the program asks for your device, plug the WLI-UC-GN into a USB port on the computer and click *Next*, *OK*, and *Finish*.

## Using Your AirStation as an Access Point



Many kinds of AOSS devices can be connected to the AirStation WLI-UC-GN in access point mode. Right click on the  icon to open the window shown at left. Click or push the AOSS button for the device you want to connect to start AOSS. Then, click on the AOSS button in this window. AOSS will set up your connection automatically.

In the following examples, we'll show how to connect several common gaming consoles to the AirStation wirelessly.



The DS® uses separate wireless connections for each game. You will need to do these steps for each game that you play wirelessly.

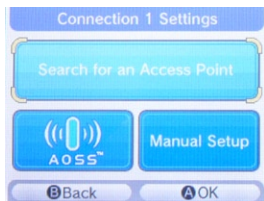
Turn on your DS®. Click on *Wi-Fi Settings*. The location of this may vary depending on what game you're in.



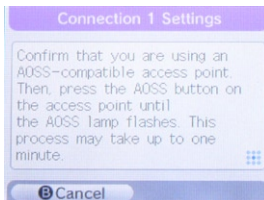
Click on *Nintendo Wi-Fi Connection Settings*.



Click on any of the 3 available connections.



Click on AOSS.



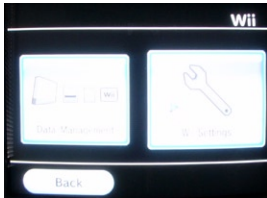
You'll see this screen. Now, click the AOSS button on your desktop (see page 13).



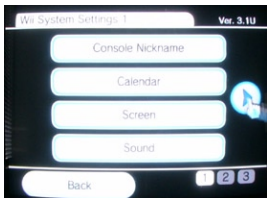
Your DS® is now connected to the network. Click *OK* to run a connection test.



Turn on your Wii®. Click on *Wii Options*, in the bottom left corner of the main menu.

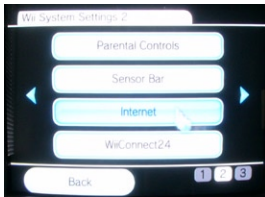


Click on *Wii Settings*.

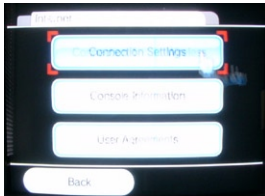


Click on the right arrow for more options.

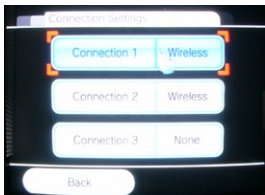




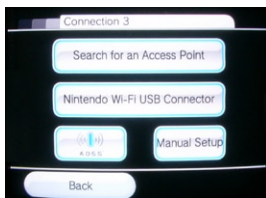
Click on *Internet*.



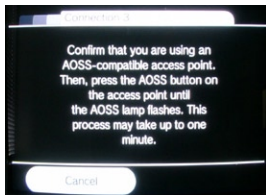
Click on *Connection Settings*.



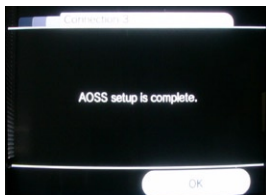
Click on any of the three available connections. If the connection you're using has settings already saved, clear them.



Click on A.O.S.S.



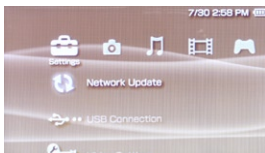
When you see this screen, click the A.O.S.S. button on your PC's desktop (page 13 for more info).



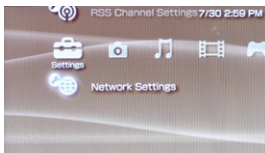
Your Wii® is now connected to the network. Click *OK* to run a connection test.



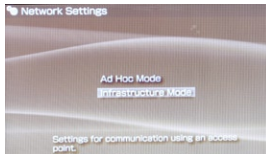
Turn on your PSP®.



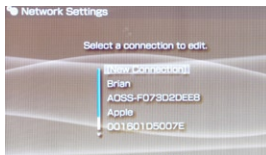
PSP firmware version 2.0 or later is required to use AOSS. Update your PSP firmware if necessary.



Select *Network Settings*.



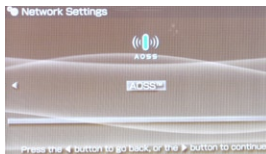
Choose *Infrastructure Mode*.



Choose *New Connection*.



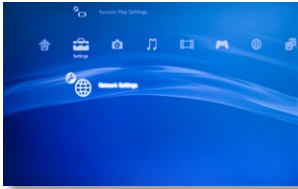
Choose *Automatic*.



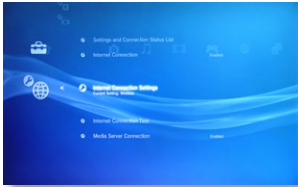
Select AOSS. Click the AOSS button on your PC's desktop (see page 13 for more info).

In about a minute, the devices will form a secure connection.

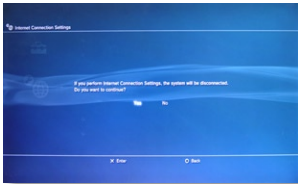




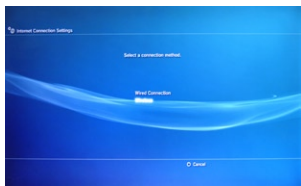
Turn on your Playstation 3® without a game inserted and navigate to *Network Settings*.



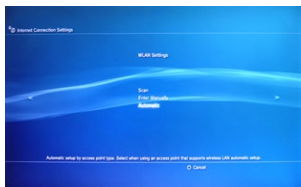
Open *Internet Connection Settings*.



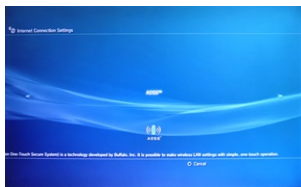
Select *Yes* to continue.



Choose *Wireless*.



Choose *Automatic*.



Press the "X" button on your controller to initiate A.O.S.S. Then, click the A.O.S.S. button on your PC's desktop (page 13 for more info on this).



In about a minute, the devices will form a secure connection.

Standards Compliance:	IEEE802.11g/IEEE802.11b/IEEE802.11nDraft2.0
Access Modes:	Infrastructure (Client Mode/AP Mode) Ad-hoc (Client Mode)
Communication Protocol:	OFDM, DSSS, CCK
Frequency Range:	2412 - 2464MHz (Channels 1 - 11)
Security:	WPA-PSK (TKIP,AES), WPA2-PSK (TKIP, AES)*, 128/64-bit WEP *Software Access Point mode does not support WPA2-PSK.
Interface:	USB 2.0
Dimensions:	0.67x 1.34" x 0.33" (17 x 34 x 8.5 mm)
Weight:	~0.19 ounces (4 grams)
Operating Environment:	32° - 104° F; 20-80% non-condensing
OS Support:	Windows® XP, Windows® Vista

### Federal Communication Commission Interference Statement

This equipment has been tested and found to comply with the limits for a Class B digital device, pursuant to Part 15 of the FCC Rules. These limits are designed to provide reasonable protection against harmful interference in a residential installation. This equipment generates, uses and can radiate radio frequency energy and, if not installed and used in accordance with the instructions, may cause harmful interference to radio communications. However, there is no guarantee that interference will not occur in a particular installation. If this equipment does cause harmful interference to radio or television reception, which can be determined by turning the equipment off and on, the user is encouraged to try to correct the interference by one of the following measures:

- Reorient or relocate the receiving antenna.
- Increase the separation between the equipment and receiver.
- Connect the equipment into an outlet on a circuit different from that to which the receiver is connected.
- Consult the dealer or an experienced radio/TV technician for help.

FCC Caution: Any changes or modifications not expressly approved by the party responsible for compliance could void the user's authority to operate this equipment.

This device complies with Part 15 of the FCC Rules. Operation is subject to the following two conditions: (1) This device may not cause harmful interference, and (2) this device must accept any interference received, including interference that may cause undesired operation.



**IMPORTANT NOTE: FCC Radiation Exposure Statement:** This equipment complies with FCC radiation exposure limits set forth for an uncontrolled environment. End users must follow the specific operating instructions for satisfying RF exposure compliance. To maintain compliance with FCC RF exposure compliance requirements, please follow operation instructions as documented in this manual. The USB dongle transmitter is approved for use in typical laptop computers. To comply with FCC RF exposure requirements, it should not be used in other devices or certain laptop and tablet computer configurations where the USB connectors on the host computer are unable to provide or ensure the necessary operating configurations intended for the device and its users or bystanders to satisfy RF exposure compliance requirements.

SAR compliance has been established in typical laptop computers with USB slot, and product could be used in typical laptop computer with USB slot. Other applications like handheld PCs or similar devices have not been verified and may not comply with related RF exposure rule and such use shall be prohibited.

The availability of some specific channels and/or operational frequency bands are country dependent and are firmware programmed at the factory to match the intended destination. This firmware setting is not accessible by the end user.

## **Industry Canada statement IC: 6102A-019**

This device complies with RSS-210 of the Industry Canada Rules. Operation is subject to the following two conditions: (1) This device may not cause harmful interference, and (2) this device must accept any interference received, including interference that may cause undesired operation.

### **IMPORTANT NOTE:**

Radiation Exposure Statement:

This equipment complies with IC radiation exposure limits set forth for an uncontrolled environment. End users must follow the specific operating instructions for satisfying RF exposure compliance. To maintain compliance with IC RF exposure compliance requirements, please follow operation instruction as documented in this manual.

**Taiwan:**

SAR compliance has been established in typical laptop computer(s) with CardBus slot, and product could be used in typical laptop computer with CardBus slot. Other application like handheld PC or similar device has not been verified, may not comply with related RF exposure rules, and such use shall be prohibited.

**Europe - EU Declaration of Conformity:**

This device complies with the essential requirements of the R&TTE Directive 1999/5/EC. The following test methods have been applied in order to prove presumption of conformity with the essential requirements of the R&TTE Directive 1999/5/EC.

- EN60950-1:2006

Safety of Information Technology Equipment

- EN 62311:2008

Assessment of electronic and electrical equipment related to human exposure restrictions for electromagnetic fields(0 Hz-300 GHz).

- EN 300 328 V1.7.1 (2006-10)

Electromagnetic compatibility and Radio spectrum Matters (ERM); Wideband Transmission systems; Data transmission equipment operating in the 2,4 GHz ISM band and using spread spectrum modulation techniques; Harmonized EN covering essential requirements under article 3.2 of the R&TTE Directive.

- EN 301 489-1 V1.8.1: (2008-04)

Electromagnetic compatibility and Radio spectrum Matters (ERM) — ElectroMagnetic Compatibility (EMC) standard for radio equipment and services — Part 1: Common technical requirements.

- EN 301 489-17 V1.3.2: (2008-04)







Electromagnetic compatibility and Radio spectrum Matters (ERM) — ElectroMagnetic Compatibility (EMC) standard for radio equipment — Part 17: Specific conditions for 2,4 GHz wideband transmission systems, 5 GHz high performance RLAN equipment and 5,8 GHz Broadband Data Transmitting Systems.

This device is a 2.4 GHz wideband transmission system (transceiver), intended for use in all EU member states and EFTA countries, except in France and Italy where restrictive use applies.

In Italy the end-user should apply for a license at the national spectrum authorities in order to obtain an authorization to use the device for setting up outdoor radio links and/or for supplying public access to telecommunications and/or network services.

This device may not be used for setting up outdoor radio links in France and in some areas the RF output power may be limited to 10 mW EIRP in the frequency range of 2454 - 2483.5 MHz. For detailed information the end-user should contact the national spectrum authority in France.

# CE 0560 ⓘ

 Česky [Czech]	<p>[<i>Jméno výrobce</i>] tímto prohlašuje, že tento [<i>typ zařízení</i>] je ve shodě se základními požadavky a dalšími příslušnými ustanoveními směrnice 1999/5/ES.</p>
 Dansk [Danish]	<p>Undertegnede [<i>fabrikantens navn</i>] erklærer herved, at følgende udstyr [udstyrets typebetegnelse] overholder de væsentlige krav og øvrige relevante krav i direktiv 1999/5/EF.</p>
 Deutsch [German]	<p>Hiermit erkläre [<i>Name des Herstellers</i>], dass sich das Gerät [<i>Gerätetyp</i>] in Übereinstimmung mit den grundlegenden Anforderungen und den übrigen einschlägigen Bestimmungen der Richtlinie 1999/5/EG befindet.</p>
 Eesti [Estonian]	<p>Käesolevaga kinnitab [<i>tootja nimi = name of manufacturer</i>] seadme [<i>seadme tüüp = type of equipment</i>] vastavust direktiivi 1999/5/EÜ põhinõuetele ja nimetatud direktiivist tulenevatele teistele asjakohastele sätetele.</p>
 English	<p>Hereby, [<i>name of manufacturer</i>], declares that this [<i>type of equipment</i>] is in compliance with the essential requirements and other relevant provisions of Directive 1999/5/EC.</p>
 Español [Spanish]	<p>Por medio de la presente [<i>nombre del fabricante</i>] declara que el [<i>clase de equipo</i>] cumple con los requisitos esenciales y cualesquiera otras disposiciones aplicables o exigibles de la Directiva 1999/5/CE.</p>

<b>el</b> Ελληνική [Greek]	ΜΕ ΤΗΝ ΠΑΡΟΥΣΑ <i>[name of manufacturer]</i> ΑΠΛΩΝΕΙ ΟΤΙ <i>[type of equipment]</i> ΣΥΜΜΟΙΦΩΝΕΤΑΙ ΠΡΟΣ ΤΙΣ ΟΥΣΙΩΔΕΙΣ ΑΠΑΙΤΗΣΕΙΣ ΚΑΙ ΤΙΣ ΛΟΙΠΕΣ ΕΧΕΤΙΚΕΣ ΑΠΑΙΤΗΣΕΙΣ ΤΗΣ ΟΔΗΓΙΑΣ 1999/5/ΕΚ.
<b>fr</b> Français [French]	Par la présente <i>[nom du fabricant]</i> déclare que l'appareil <i>[type d'appareil]</i> est conforme aux exigences essentielles et aux autres dispositions pertinentes de la directive 1999/5/CE.
<b>it</b> Italiano [Italian]	Con la presente <i>[nome del costruttore]</i> dichiara che questo <i>[tipo di apparecchio]</i> è conforme ai requisiti essenziali ed alle altre disposizioni pertinenti stabilite dalla direttiva 1999/5/CE.
<b>lv</b> Latviski [Latvian]	Ar šo <i>[name of manufacturer / izgatavotāja nosaukums]</i> deklare, ka <i>[type of equipment / iekārtas tips]</i> atbilst Direktīvas 1999/5/EK būtiskajām prasībām un citiem ar to saistītajiem noteikumiem.
<b>lt</b> Lietuvių [Lithuanian]	Šiuo <i>[manufacturer name]</i> deklaruoją, kad šis <i>[equipment type]</i> atitinka esminius reikalavimus ir kitas 1999/5/EB Direktyvos nuostatas.
<b>nl</b> Nederlands [Dutch]	Hierbij verklaart <i>[naam van de fabrikant]</i> dat het toestel <i>[type van toestel]</i> in overeenstemming is met de essentiële eisen en de andere relevante bepalingen van richtlijn 1999/5/EG.
<b>mt</b> Malti [Maltese]	Hawnhekk, <i>[isem tal-manifattur]</i> , jiddikjara li dan <i>[il-mudell tal-prodott]</i> jikkonforma mal-htigijiet essenzjali u ma provvedimenti oħrajn rilevanti li hemm fid Direttiva 1999/5/EC.

<b>[hu]</b> Magyar [Hungarian]	Alulírott, [gyártó neve] nyilatkozom, hogy a [...] típus/ megfelelő a vonatkozó alapvető követelményeknek és az 1999/5/EC irányelv egyéb előírásainak.
<b>[pl]</b> Polski [Polish]	Niniejszym [nazwa producenta] oświadczam, że [nazwa wyrobu] jest zgodny z zasadniczymi wymogami oraz pozostałymi stosownymi postanowieniami Dyrektywy 1999/5/EC.
<b>[pt]</b> Português [Portuguese]	[Nome do fabricante] declara que este [tipo de equipamento] está conforme com os requisitos essenciais e outras disposições da Directiva 1999/5/CE.
<b>[sl]</b> Slovensko [Slovenian]	[Ime proizvajalca] izjavlja, da je ta [tip opreme] v skladu z bistvenimi zahtevami in ostalimi relevantnimi določili direktive 1999/5/ES.
<b>[sk]</b> Slovensky [Slovak]	[Meno výrobcu] týmto vyhlasuje, že [typ zariadenia] spĺňa základné požiadavky a všetky príslušné ustanovenia Smernice 1999/5/ES.
<b>[fi]</b> Suomi [Finnish]	[Valmistaja = manufacturer] vakuuttaa täten että [type of equipment = laitteen tyyppimerkintä] tyyppinen laite on direktiivin 1999/5/EY olleiden vaatimusten ja sitä koskevien direktiivin muiden ehtojen mukainen.
<b>[sv]</b> Svenska [Swedish]	Härmed intygar [företag] att denna [utrustningstyp] står i överensstämmelse med de väsentliga egenskapskrav och övriga relevanta bestämmelser som framgår av direktiv 1999/5/EG.

**FC** Tested to comply  
With FCC Standards  
FOR HOME OR OFFICE USE  
FCC ID:FDI-09102006-0



xxxxx / POSTEL / xxxx  
xxxx

 인증번호:  
BUF-WLIUCGN01



Complies with  
IDA Standards  
DA10.412

ETA-xxx/xxxx  
No.ESD-xxxxxxx  
CMII:xxxxxxxxx





© Buffalo Technology (USA), Inc. Buffalo Technology, Buffalo Technology logo and AOSS logo are registered trademarks of Buffalo Technology (USA), Inc. The names and logos of other companies mentioned herein belong to their respective owners. “Nintendo” is a registered trademark of Nintendo of America Inc. Nintendo owns extensive intellectual property rights in all of its products, including video game systems, game titles, characters, game software, graphics, artwork, and screen shots. Nintendo also retains rights in content on Nintendo’s web sites, including articles, artwork, screen shots and other files. Trademarks and copyrights for third-party games and characters are owned by the companies that market or license those products. “SONY” is a registered trademark of Sony Corporation, Inc. Any other product names, service names or logos of SONY used are trademarks or registered trademarks of Sony Corporation or any of its affiliates. Windows is a registered trademark of Microsoft Corporation in the United States and other countries.

## ADDRESS

Buffalo Technology (USA), Inc.  
11100 Metric Blvd, Suite 750  
Austin, TX 78758

## GENERAL INQUIRIES

Email: [sales@buffalotech.com](mailto:sales@buffalotech.com)

## TECHNICAL SUPPORT

North American Technical Support by phone is available 24 hours a day, 7 days a week. (USA and Canada).

Toll-free: (866) 752-6210

### ADDRESS

Buffalo Technology UK Ltd.  
2 Bracknell Beeches, Old Bracknell Lane  
Bracknell, Berkshire, RG12 7BW  
United Kingdom

### GENERAL INQUIRIES

Email: [sales@buffalo-technology.com](mailto:sales@buffalo-technology.com)

### TECHNICAL SUPPORT

Buffalo Technology provides technical support in English, German, French, Italian, and Spanish. For opening hours and relevant telephone numbers, please go to


[www.buffalo-technology.com/contact](http://www.buffalo-technology.com/contact)

## NCC Regulatory Information

經型式認證合格之低功率射頻電機，非經許可，公司、商號或使用者均不得擅自變更頻率、加大功率或變更原設計之特性及功能。

低功率射頻電機之使用不得影響飛航安全及干擾合法通信；經發現有干擾現象時，應立即停用，並改善至無干擾時方得繼續使用。前項合法通信，指依電信法規定作業之無線電通信。低功率射頻電機須忍受合法通信或工業、科學及醫療用電波輻射性電機設備之干擾。

### Note:

1. 本模組於取得認證後將依規定於模組本體標示審驗合格標籤
2. 系統廠商應於平台上標示「本產品內含射頻模組： CCXXXXYYyyZzW」字樣