

**AirStation 11g 125Mbps □
WirelessLAN USB Adapter**



Congratulations on your purchase! The AirStation WLI-U2-KG125S Turbo G wireless USB 2.0 Adapter connects your notebook computer or desktop PC to a 2.4ghz 802.11g or b network.

System Requirements

- A compatible G or B band access point.
- A PC running Windows XP, 2000, ME, or 98se that has a USB 2.0 port.

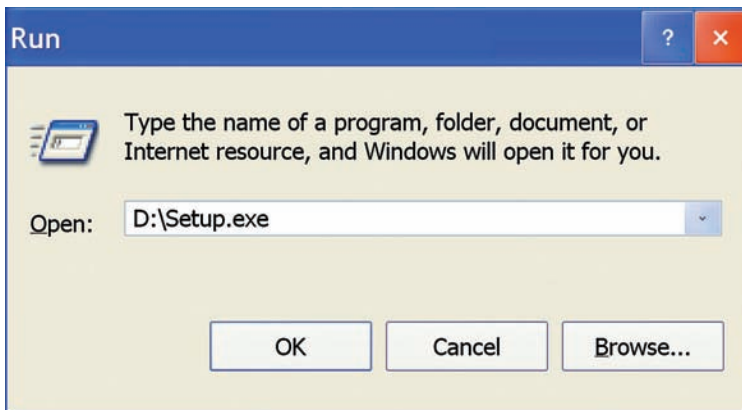
Package Contents

- WLI-U2-KG125S USB Adapter
- Utility CD with Manual
- Quick Setup Guide
- Warranty Statement

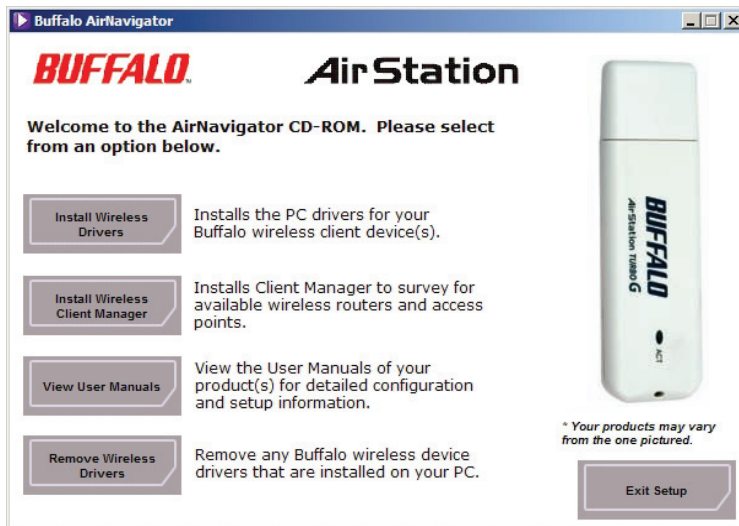
Getting Started.....	4
Installing Drivers.....	5
Installing with Windows XP.....	7
Installing with Windows 98, Me, 2000.....	8
Installing Client Manager	11
Using Client Manager	14
AOSS	21
Wireless Zero Config.....	25
Specifications.....	28
Troubleshooting/FAQ	29
FCC/CE Information	32
Contact Information.....	50

1. Installing Drivers:

Insert the AirNavigator CD into the CD-ROM drive of the PC. Do not insert the USB key into a USB port yet.

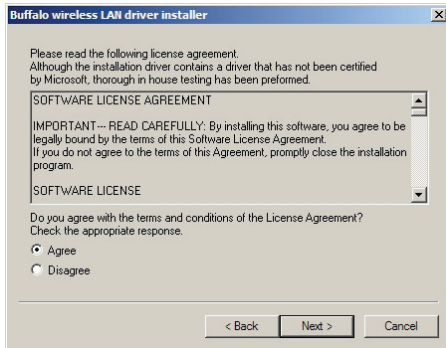


If setup.exe does not launch automatically, click *Start* and select *Run*. Enter *D:\Setup.exe* in the Open field, where *D:* is the letter assigned to your CD-ROM. Click *OK* to launch the wizard.

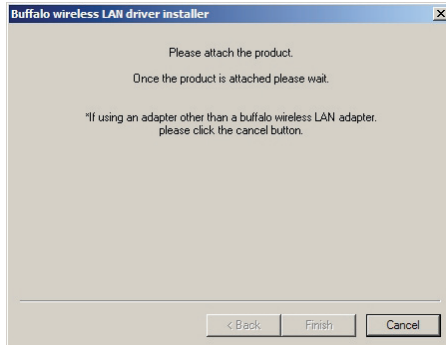


Select *Install Wireless Drivers*.
Click *Next*.

AirNavigator - Installing Drivers



The Software License Agreement will appear. Select *Agree* and then click *Next*.



If you have Windows XP on your PC, turn to page 7 to install your adapter. If you are using Windows 98se, Me, or 2000, turn to page 8.

2. Installing the Wireless USB Adapter with Windows XP*:



Plug the Wireless USB Adapter or stand into an available USB port on your PC. The Found New Hardware Wizard will launch automatically.

If this screen doesn't appear, remove the Wireless USB Adapter and restart the notebook. Reinsert the Wireless USB Adapter once the notebook has rebooted.

If the wizard doesn't run automatically, select *Install the software automatically*, and click *Next*, then *Finish*.

* If you're using Windows 98se, Me, or 2000, turn to page 8 for alternate instructions.

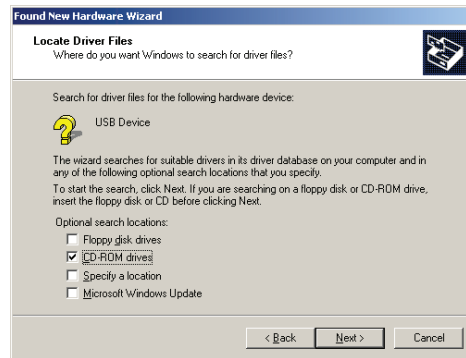
2. Installing the Wireless USB Adapter with Windows 98se/Me/2000:



Power on the notebook PC and let it boot into Windows. Plug the Wireless USB Adapter into an available USB port on your PC. The Found New Hardware Wizard will launch automatically.

If this screen doesn't appear, remove the Wireless USB Adapter and restart the notebook. Reinsert the Wireless USB Adapter once the notebook has rebooted.

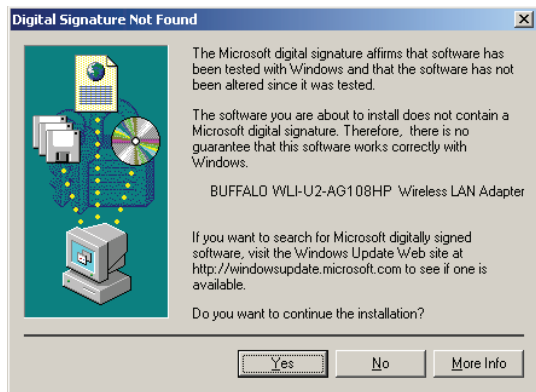
Select *Install the software automatically*. Click the *Next* button.



Insert the AirNavigator CD. Click *Next* at the Welcome to the Found New Hardware Wizard. Select *Search for a suitable driver for my device*. Click *Next* to continue.

Check only the CD-ROM drives checkbox, and clear any other checkboxes that are selected. Click *Next* to continue.

Windows will display a driver you can use with the Wireless USB Adapter.
Click *Next*.



In Windows 2000, if the *Digital Signature Not Found* page opens as shown, click *Yes* to continue the installation process.

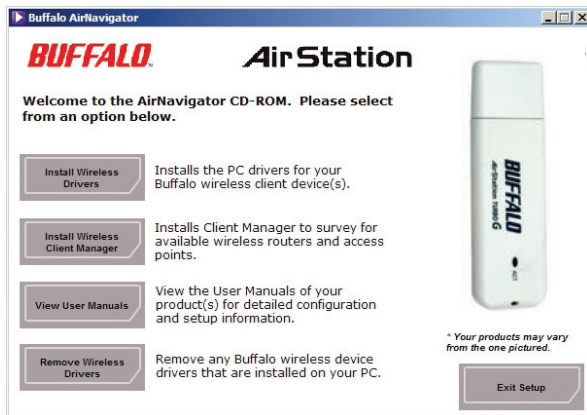
When the Wireless USB Adapter is successfully installed, click *Finish*. Restart your computer if prompted.

See the next page to install the Client Manager.

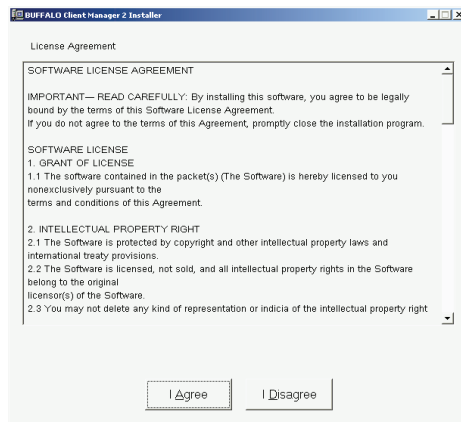
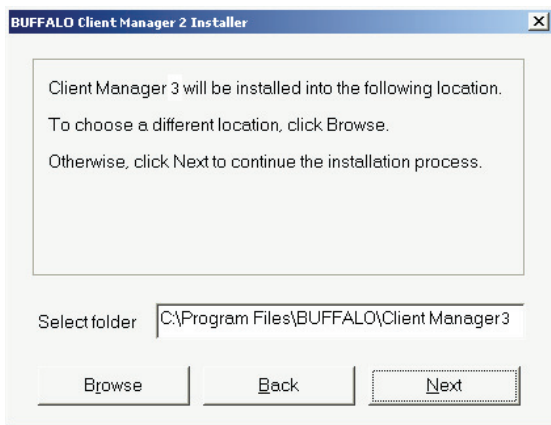
3. Installing Client Manager

Client Manager lets you configure your wireless network, survey and connect to available access points, enable and use WEP encryption, initiate AOSS, and create connection profiles.

Note: During Installation, Client Manager disables Windows XP's Zero Configuration Tool. If you have Windows XP, and you don't want to install or use Client Manager, turn to page 25 to use the built in Windows Zero Configuration Tool instead.



Insert the AirNavigator CD. The AirNavigator dialog box should open automatically. If it does not, click *Start*, then *Run*, and enter *D:\Setup.exe* in the "Open" field, where D: is the letter assigned to your CD-ROM drive. Click the *OK* button. Select *Install Client Manager* to launch the InstallShieldWizard.

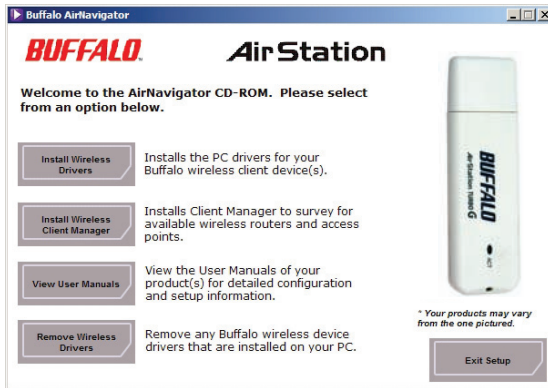


Once the Installer Wizard launches, click the *Next* button to begin the software installation.

Press *I Agree* to accept the license agreement and continue the installation process.



Press the *OK* button to finish and close the installation program.



Press the *Exit Setup* button to close the AirNavigator installation utility.

The Buffalo Client Manager is now installed and running; clicking on its icon (the black antenna icon) will allow you to begin using it.



You may use Client Manager to configure your wireless network manually. Client Manager consists of the Status page, the Survey page, and the Profiles page. You can access each page by clicking the corresponding button at the top of Client Manager. Several dialog boxes are also available. You can access the Edit Profile dialog box, New Profile dialog box, IP Configuration dialog box, or WEP Configuration dialog box using the Client Manager pages. You may also initiate AOSS (page 21).

Status Page



Click *Status* to open this page. By default, this page is displayed when you start Client Manager. Details of connection status are displayed.

This page only displays connection information; no changes to settings are made here.

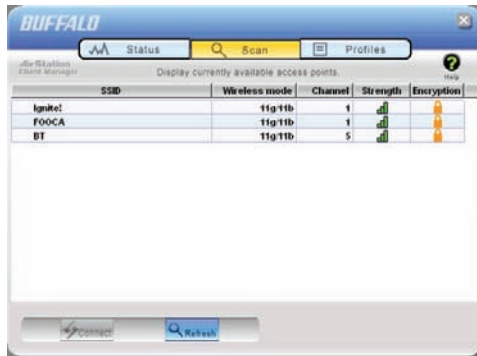
This page includes the following components:

- **Adapter Name** – Displays the part number of the wireless adaptor that is being used.

- **Network Type** – Displays whether network is in Ad-Hoc or Infrastructure mode.
- **Rate** – The speed of communication between wireless devices. If the Client Manager is not connected to a remote wireless device (access point or another client), no rate will be displayed.
- **Channel** – The channel that the two wireless clients are using for communication. If the Client Manager is not connected to a remote wireless device, no channel will be displayed. Channels 1-11 may be used.
- **Security** – The type of encryption in use. If the Client Manager is not connected to a remote wireless device, then 'No Encryption' will be displayed.
- **IP Address** – The IP address of the machine the Client Manager is installed on. If the Client Manager is not connected to a network with DHCP, then no IP address will be displayed.
- **MAC Address** – The MAC address of the wireless client device inside the computer Client Manager is installed on. If no wireless device is present in the computer, then no MAC Address will be displayed.
- **Signal Strength** – Displays the signal strength of the peak signal level the wireless adapter receives from the wireless device to which it is connected. Next to the signal level is the wireless hardware being used for this measurement.

Click the *Scan* button to open this page. Here, you can survey the area, display available access points, and connect to available access points.

This page includes the following components:

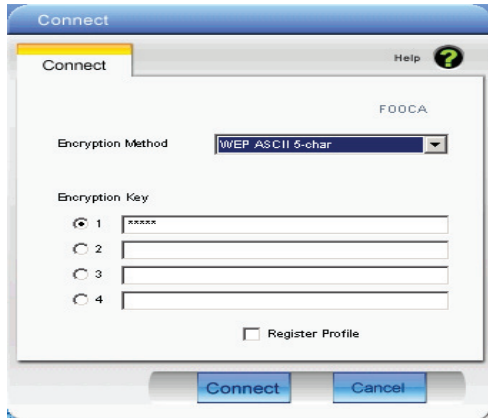


- **SSID** – The SSID is the “name” of a wireless network. Each wireless device on a network must use identical SSIDs to successfully communicate.
- **Wireless Mode** – Displays available modes for each available remote wireless device.
- **Channel** – Displays the wireless channel used by each available network.
- **Strength** – Displays the relative signal strength of the wireless networks.
- **Encryption** – Displays whether the wireless network is using any sort of encryption.

Click *Connect* to connect to a highlighted SSID, or *Refresh* to update the list of available wireless devices.

Manual Configuration - Encryption

This dialog will open. If you are not using encryption, just click *Connect* to connect to your network.



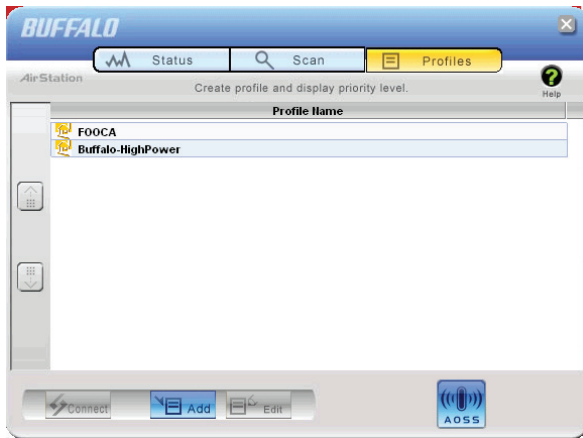
If your AP uses encryption, the correct encryption type should already be selected automatically in the *Encryption Method* drop down list. Only change this setting if necessary.

The *Encryption Key* field is where the actual key for the wireless network should be entered. Some wireless networks allow you to enter multiple keys; four separate fields are available for this. If your network only uses one encryption key, then please use the first field (#1) to enter your key.

The *Register Profile* option will store this wireless network in your profiles. You will then automatically connect to this network when inside its range. This is recommended if you plan on using this wireless network again.

Press the *Connect* button once you have entered your encryption information.

Profiles Page



Click the *Profiles* tab to open this page. Use this page to access your profiles. Profiles allow you to save the information associated with a specific wireless network so you can quickly and easily connect to that network when you are in that location. The Profiles page allows you to add, delete, and edit your profiles, as well as import and export data.

- **Connect** – Click the *Connect* button to connect to the selected profile and return to the Status page.
- **Edit** – Click the *Edit* button to edit the selected profile's settings. The Edit button also allows you to delete profiles that are no longer used or required.
- **Add** – Click the *Add* button to add a profile manually. You will need important information such as SSID, encryption settings, and network type.

New Profile Dialog Box

The screenshot shows a 'Profile Information' dialog box with the following fields and options:

- Display Icon:** Buffalo (with a dropdown arrow)
- Select Profile:** Radio buttons for **Wireless** (selected) and **Wired**
- Profile Name:** Buffalo-HighPower
- Network Type:** Infrastructure Mode (dropdown menu)
- SSID:** Buffalo-HighPower
- Channel:** Auto-Channel (dropdown menu)
- Encryption Method:** WEP ASCII 6-char (dropdown menu)
- Transmission Key:** 1
- Encryption Key:** *****
- Set AP to exclusive connection.
- Buttons:** OK, Cancel

- **Select Profile** – Select whether the profile is for a wireless or wired connection.
- **Profile Name** – Enter the name you want to associate with the new profile.
- **Network Type** – Select the network mode you want to associate with the new profile. Select *Infrastructure* if your network consists of both wired and wireless devices that communicate through a central device, such as an access point. Select *Ad-hoc* if your network consists of only wireless devices that communicate with each other directly.
- **Network Name SSID** – Enter the *SSID* of your network. The SSID is the name of your wireless network. All wireless

devices on a network must use identical SSIDs to successfully associate with other devices on the network. MYSSID is an example of a valid SSID.

- **Channel** – *Auto-Channel* is recommended for most profiles. If you are making an Ad-hoc connection, or connecting to a network that doesn't broadcast its SSID, you may have to set the wireless channel manually here.
- **Encryption Method** – Displays the types of encryption available. Once encryption is selected, you will be required to enter an Encryption Key. For the Transmission Key Number, 1 is recommended.
- **OK** – Click *OK* to save your specifications and return to the Profiles page.

Advanced Profile Options

- **Network Tab** – Displays the network information tab. A static IP can be specified for this wireless profile here. It is not recommended to change any of these settings unless specified by an administrator.
- **Browser Tab** – Displays settings to change your browser preferences for this wireless profile. A specific home page can be specified when connected to this wireless profile as can specific proxy server addresses.
- **Printers Tab** – Displays the printers tab. A specific default printer can be associated to this profile. Thus, when connected to this profile, a specific printer will be used as the default printer.
- **OK** – Click the *OK* button to save your specifications and return to the Profiles page.



- **AOSS Icon** – To automatically add the USB wireless client to your network, just click this icon and then hold down the AOSS button on your wireless router for a few seconds.


Turn to the next page for more on using AOSS.

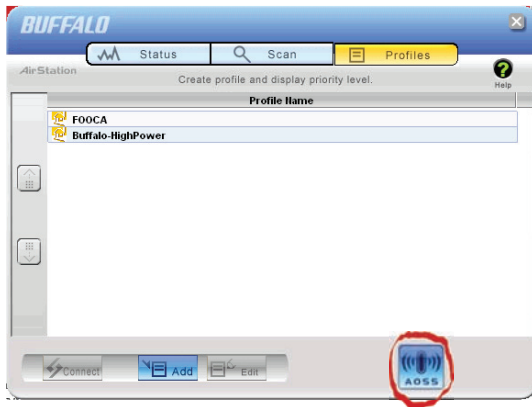


AOSS (AirStation One-Touch Secure System) is a simple system for connecting wireless clients to an access point while enforcing the most secure possible connection encryption type. Users no longer need to worry about choosing the proper security protocols, IP addresses, or SSID. AOSS determines the optimal connection and configures itself in seconds.

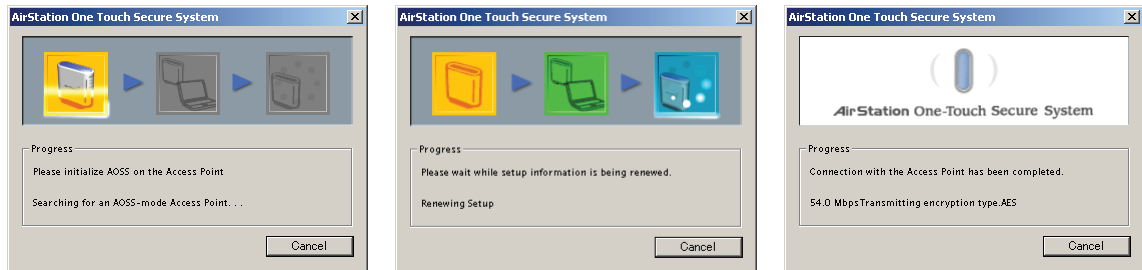
Your router or access point must support AOSS to use it.

Your WLI-U2-KG125S has its AOSS button in the Client Manager 3 software. If your router or access point supports AOSS, then AOSS will let you connect the WLI-U2-KG125S to your wireless network, easily and securely.

Start Client Manager by double clicking on the black antenna icon  in your System Tray, or by launching the Client Manager from your Start Menu: Programs >> Buffalo >> AirStation Utility >> Client Manager.



- From the Status Screen, select the *Profiles* tab.
- Initiate AOSS by clicking the blue AOSS button on the Client Manager's screen. The AOSS wizard will appear.
- Now, press the AOSS button on your access point. Hold it down until the AOSS LED on the access point begins to flash (1-3 seconds).



Once AOSS is complete (about 30 seconds), the connection is archived as a profile for later use. To minimize Client Manager to the system tray, click the 'X' in the top right corner.

Notes:

AOSS will scan for an AOSS partner for about two minutes. If it times out before finding one, just press the AOSS buttons again.

Output power is reduced to 25% of normal during AOSS for security reasons. If you're having trouble making an AOSS connection, temporarily move the devices closer together.

AOSS will automatically use the highest level of security available for all currently connected wireless devices.

If you have trouble connecting with AOSS, temporarily disable all personal firewalls on your PC, such as ZoneAlarm or Microsoft Personal Firewall. These programs may be re-enabled after AOSS has finished. Also, make sure that any other wireless client manager software (including Windows XP's Zero Configuration Service) is disabled before using Client Manager 3.

Wireless Zero Configuration Service (Windows XP)

Windows XP offers the Wireless Zero Configuration Service to support 802.11a, 802.11b and 802.11g wireless networking. This service automatically polls the area for available wireless access points. If an available wireless access point is found, Windows attempts to connect to the access point. If no available wireless access points are found, you must manually add the access points.

Note: The Wireless Zero Configuration Service and Client Manager do not function properly together. If you want to use Client Manager, disable the Wireless Zero Configuration Service.

Enabling the Wireless Zero Configuration Service

Select Start»Control Panel»Administrative Tools»Services to open the Services window. Select Automatic in the Startup Type field of Wireless Zero Configuration Service to enable the Wireless Zero Configuration Service.

Note: Windows XP's default setting for Wireless Zero Configuration Service is "Automatic" (on).

Disabling the Wireless Zero Configuration Service

Select Start»Control Panel»Administrative Tools»Services to open the Services window. Select Disabled in the Startup Type field of Wireless Zero Configuration Service to disable the Wireless Zero Configuration Service.

Using Wireless Zero Configuration:

Normally, Windows XP will scan for available wireless access points once the Wireless Notebook Adapter is installed. If Windows detects an access point, a networking icon appears on the task bar. One or more wireless networks are available appears as a caption accompanying the icon.

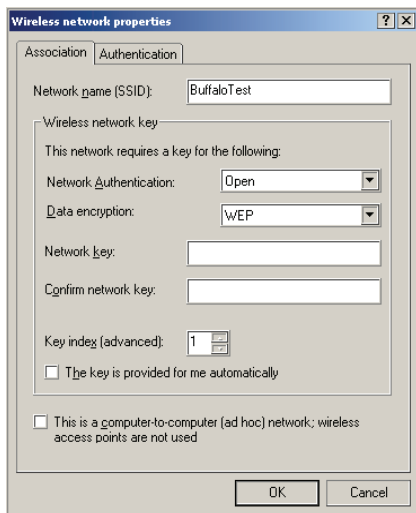
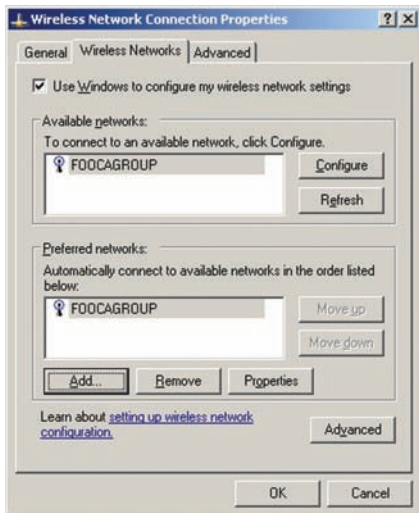
Notes: If Wireless Zero Configuration is not running, click Start>Control Panel>Administrative Tools>Services. Select *Automatic* in the Startup Type field of the Wireless Zero Configuration Service to start it.

If you don't want to use Wireless Zero Config and would rather use Buffalo's client utility, or if you have a Windows 98 or 2000 computer, turn to page 11.

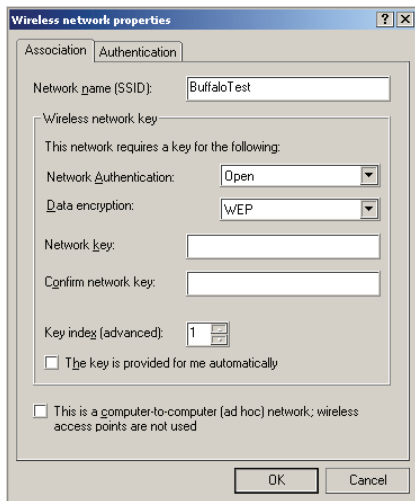
Right click the networking icon in the taskbar and select *View Available Wireless Networks* to display a list of available wireless networks. Select a network and click *Connect*.

If the network that you are connecting to is unsecured, you may need to check the box allowing you to connect to an unsecured network.





Click the *Advanced* button to enter an SSID network name or WEP/WPA encryption key manually. To add an SSID network name that is not listed, click the *Add* button.



To enter an encryption key, select the appropriate wireless network and click the *Configure* button.

From the pull down menu, select the appropriate type of Data encryption for the wireless network. Enter and confirm the Network Key (encryption key). Click the *OK* button when finished.

Wireless LAN Interface

Standards Compliance	IEEE802.11g, IEEE802.11b
Communication Protocol	Direct Sequence Spread Spectrum (DS-SS), Half Duplex
Frequency Range	2.412-2.472Ghz
Transmission Rate	802.11g: 1, 2, 5.5, 11, 18, 24, 36, 48, 54Mbps 125* Mode: 13, 20, 27, 40, 54, 80, 110, 125Mbps
Access Mode	Infrastructure mode, Ad-Hoc mode
Security	128/64 Bit WEP, WPA, 802.1x, WPA-PSK, TKIP, AES

Others

Interface	USB 2.0 (Compatible USB 1.1)
Power Consumption	460mA (max)
Environmental Operation	0-55°C, 20-80% (non-condensing)
Dimensions	4.1 x 1.1 x 0.5 inches (103 x 29 x 12 mm)
OS Support	Windows XP, 2000, Me, 98se

Use this section to locate answers to frequently asked questions.

What should I do if I already have a version of Client Manager on my PC?

Update your Client Manager to the version on the CD. If you do not update your Client Manager, there could be a loss of functionality, as some versions of Client Manager will not work properly with the Wireless USB Adapter. Before updating Client Manager, you must uninstall all previous versions of Client Manager. To update your Client Manager, load the Air Navigator CD and select Install Client Manager.

Why won't all my network clients work?

Some operating systems support only a limited number of network clients.

Windows 98/Me: These operating systems support only four network clients. If you install more than four network clients, only the first four clients you install will work.

Will Client Manager support all operating systems?

Client Manager and the AirStation Wireless USB Adapter currently support only Windows 98/ME/2000/XP. They do not currently support Windows NT, Mac OS, or Linux.

Why won't Client Manager function properly?

In Windows XP, the Wireless Zero Configuration Service conflicts with Client Manager. Normally, Zero Config is disabled when Client Manager is installed, but other software may turn it back on. You may disable Wireless Zero Config manually. Click 'Start»Control Panel»Administrative Tools»Services' to open the Services window. Select 'Disabled' in the Startup Type field of Wireless Zero Configuration Service to disable the Wireless Zero Configuration Service.

I have more than one Air Navigator CD. Do I need more than one CD?

No. You receive the same Air Navigator CD with each Buffalo Technology access point and wireless adapter. Just use the most recent CD for installing any Buffalo Technology wireless products.

* 54 Mbps is the maximum wireless signal rate derived from IEEE Standard 802.11a and 802.11g specifications. 125 Mbps is the maximum wireless signal rate derived from using channel bonding technology when used with supported devices. Actual data throughput will vary depending upon network conditions and environmental factors, including volume of network traffic, building materials and construction, and network overhead.

Federal Communication Commission Interference Statement

This equipment has been tested and found to comply with the limits for a Class B digital device, pursuant to Part 15 of the FCC Rules. These limits are designed to provide reasonable protection against harmful interference in a residential installation. This equipment generates, uses and can radiate radio frequency energy and, if not installed and used in accordance with the instructions, may cause harmful interference to radio communications. However, there is no guarantee that interference will not occur in a particular installation. If this equipment does cause harmful interference to radio or television reception, which can be determined by turning the equipment off and on, the user is encouraged to try to correct the interference by one of the following measures:

- Reorient or relocate the receiving antenna.
- Increase the separation between the equipment and receiver.
- Connect the equipment into an outlet on a circuit different from that to which the receiver is connected.
- Consult the dealer or an experienced radio/TV technician for help.

FCC Caution: To assure continued compliance, (example - use only shielded interface cables when connecting to computer or peripheral devices). Any changes or modifications not expressly approved by the party responsible for compliance could void the user's authority to operate this equipment.

This device complies with Part 15 of the FCC Rules. Operation is subject to the following two conditions: (1) This device may not cause harmful interference, and (2) this device must accept any interference received, including interference that may cause undesired operation.

IMPORTANT NOTE:

FCC RF Radiation Exposure Statement:

This equipment complies with FCC radiation exposure limits set forth for an uncontrolled environment. End users must follow the specific operating instructions for satisfying RF exposure compliance. □
This transmitter must not be co-located or operating in conjunction with any other antenna or □
transmitter. □
This equipment has been SAR-evaluated for use in laptops (notebooks) with USB port configuration. □
□

R&TTE Compliance Statement

This equipment complies with all the requirements of the DIRECTIVE 1999/5/EC OF THE EUROPEAN PARLIAMENT AND THE COUNCIL of 9 March 1999 on radio equipment and telecommunication terminal Equipment and the mutual recognition of their conformity (R&TTE). The R&TTE Directive repeals and replaces in the directive 98/13/EEC (Telecommunications Terminal Equipment and Satellite Earth Station Equipment) As of April 8, 2000.

Safety

This equipment is designed with the utmost care for the safety of those who install and use it. However, special attention must be paid to the dangers of electric shock and static electricity when working with electrical equipment. All guidelines of this manual and of

the computer manufacturer must therefore be allowed at all times to ensure the safe use of the equipment.

EU Countries intended for use

The ETSI version of this device is intended for home and office use in Austria, Belgium, Denmark, Finland, France (with Frequency channel restrictions), Germany, Greece, Iceland, Ireland, Italy, Luxembourg, Norway, The Netherlands, Portugal, Spain, Sweden, Switzerland and United Kingdom.

The ETSI version of this device is also authorized for use in EFTA member states Iceland, Liechtenstein, Norway and Switzerland.

EU Countries Not intended for use

None.

Potential restrictive use

France: Only channels 10,11,12, and 13.

U.S.A: Limited in CH1~CH11 for 2.4 GHz by specified firmware.



Federal Communication Commission Declaration of Conformity (DoC) Statement

Model No: WLI-U2-KG125S

AirStation High Power Dual A+G SmartRouter

Buffalo Inc.

15, Shibata Hondori 4-chrome

Minami-ku, Nagoya 457-8520

Japan

01181-52-241-7980

This equipment has been tested and found to comply with the limits for a Class B digital device, pursuant to Part 15 of the FCC rules. These limits are designed to provide reasonable protection against harmful interference in a residential installation. This equipment generates, uses, and can radiate radio frequency energy and, if not installed and used in accordance with the instructions, may cause harmful interference to radio communications. However, there is no guarantee that interference will not occur in a particular installation. If this equipment does cause harmful interference to radio or television reception, which can be determined by turning the equipment off and on, the user is encouraged to try to correct the interference by

one or more of the following measures:

- Reorient or relocate the receiving antenna.
- Increase the separation between the equipment and receiver.
- Connect the equipment into an outlet on a circuit different from that to which the receiver is connected.
- Consult the dealer or an experienced radio/TV technician for help.

This device complies with Part 15 of the FCC Rules. Operation is subject to the following two conditions: (1) This device may not cause harmful interference, and (2) This device must accept any interference received, including interference that may cause undesired operation.

Caution:

Any changes or modifications not expressly approved by the party responsible for product compliance could void the user's authority to operate the equipment.

Caution:

Exposure to radio frequency radiation (below is for portable device)

SAR compliance has been established in typical laptop computer(s) with USB port, and product could be used in typical laptop computer with USB port. Other application like handheld PC or similar device has not been verified and may not compliance with related RF exposure rule and such use shall be prohibited.

Caution Exposure to radio frequency radiation (below is for portable device)

To comply with FCC RF exposure compliance requirements, this device must not be colocated or operating in conjunction with any other antenna or transmitter.

b. Industry Canada Portion

Canada Regulatory Compliance Statement

This Class B digital apparatus complies with Canadian ICES-003.

Cet appareil numérisé de la classe B est conforme à la norme NMB-003 du Canada.

For Customers in Canada

This device complies with RSS 210 of Industry Canada (IC).

Operation is subject to the following two conditions:

- (1) this device may not cause interference, and
- (2) this device must accept any interference, including interference that may cause undesired operation of this device.

L' utilisation de ce dispositif est autorisée seulement aux conditions suivantes :

- (1) il ne doit pas produire de brouillage et
- (2) l' utilisateur du dispositif doit être prêt à accepter tout brouillage radioélectrique reçu, même si ce brouillage est susceptible de compromettre le fonctionnement du dispositif.

Exposure to radio frequency radiation (below statement applied to mobile or portable device)
The installer of this radio equipment must ensure that the antenna is located or pointed such that it does not emit RF field in excess of Health Canada limits for the general population; consult Safety Code 6, obtainable from Health Canada's website at www.hc-sc.gc.ca/rpb.

c. EU Portion

European Community Declaration of Conformity with Regard to the R&TTE Directive
1999/5/EC

The following standards were applied: (Omni)

- Radio: EN 300-328 v1.6.1 (2.4-GHz operation)
- WLI-U2-KG125S is 2.4GHz product.
- EMC: EN 301.489-1 v1.4.1, EN 301.489-17 v1.2.1
- Safety: IEC 60950 (1999 3rd Edition with Amend. 1,2,3,4) & EN 60950 (2000)

The following CE mark is affixed to the device:



Note: This equipment is intended to be used in all EU and EFTA countries. Outdoor use may be restricted to certain frequencies and/or may require a license for operation. For more details, contact your customer service representative.

This equipment complies with FCC radiation exposure limits set forth for an uncontrolled environment. End users must follow the specific operating instructions for satisfying RF exposure compliance. This transmitter must not be co-located or operating in conjunction with any other antenna or transmitter.

Member States shall ensure that the manufacturer or the person responsible for placing the apparatus on the market provides information for the user on the intended use of the apparatus, together with the declaration of conformity to the essential requirements. Where it concerns radio equipment, such information shall be sufficient to identify on the packaging and the instructions for use of the apparatus the Member States or the geographical area within a Member State where the equipment is intended to be used and shall alert the user by the marking on the apparatus referred to in Annex VII, paragraph 5, to potential restrictions or requirements for authorization of use of the radio equipment in certain Member States.

Declaration of Conformity with Regard to the R&TTE Directive 1999/5/EC

Česky

[Czech]

Buffalo Technology Inc. tímto prohlašuje, že tento AirStation WLI-U2-KG125S je ve shodě se základními požadavky a dalšími příslušnými ustanoveními směrnice 1999/5/ES.

Dansk

[Danish]

Undertegnede Buffalo Technology Inc. erklærer herved, at følgende udstyr AirStation WLI-U2-KG125S overholder de væsentlige krav og øvrige relevante krav i direktiv 1999/5/EF.

Deutsch

[German]

Hiermit erklärt Buffalo Technology Inc. dass sich das Gerät AirStation WLI-U2-KG125S in Übereinstimmung mit den grundlegenden Anforderungen und den übrigen einschlägigen Bestimmungen der Richtlinie 1999/5/EG befindet.

Eesti

[Estonian]

Käesolevaga kinnitab Buffalo Technology Inc. seadme AirStation WLI-U2-KG125S vastavust direktiivi 1999/5/EÜ põhinõuetele ja nimetatud direktiivist tulenevatele teistele asjakohastele sätetele.

English Hereby, Buffalo Technology Inc. declares that this AirStation WLI-U2-KG125S is in compliance

with the essential requirements and other relevant provisions of Directive 1999/5/EC.

Español

[Spanish]

Por medio de la presente Buffalo Technology Inc. declara que el AirStation WLI-U2-KG125S cumple con los requisitos esenciales y cualesquiera otras disposiciones aplicables o exigibles de la Directiva 1999/5/CE.

Ελληνική

[Greek]

ΜΕ ΤΗΝ ΠΑΡΟΥΣΑ Buffalo Technology Inc. ΔΗΛΩΝΕΙ ΟΤΙ AirStation WLI-U2-KG125S ΣΥΜΜΟΡΦΩΝΕΤΑΙ ΠΡΟΣ ΤΙΣ ΟΥΣΙΩΔΕΙΣ ΑΠΑΙΤΗΣΕΙΣ ΚΑΙ ΤΙΣ ΛΟΙΠΕΣ ΣΧΕΤΙΚΕΣ ΔΙΑΤΑΞΕΙΣ ΤΗΣ ΟΔΗΓΙΑΣ 1999/5/ΕΚ.

Français

[French]

Par la présente Buffalo Technology Inc. déclare que l'appareil AirStation WLI-U2-KG125S est conforme aux exigences essentielles et aux autres dispositions pertinentes de la directive 1999/5/CE.

Italiano

[Italian]

Con la presente Buffalo Technology Inc. dichiara che questo AirStation WLI-U2-KG125S è conforme ai requisiti essenziali ed alle altre disposizioni pertinenti stabilite dalla direttiva 1999/5/CE.

with the essential requirements and other relevant provisions of Directive 1999/5/EC.

Español

[Spanish]

Por medio de la presente Buffalo Technology Inc. declara que el AirStation WLI-U2-KG125S cumple con los requisitos esenciales y cualesquiera otras disposiciones aplicables o exigibles de la Directiva 1999/5/CE.

Ελληνική

[Greek]

ΜΕ ΤΗΝ ΠΑΡΟΥΣΑ Buffalo Technology Inc. ΔΗΛΩΝΕΙ ΟΤΙ AirStation WLI-U2-KG125S ΣΥΜΜΟΡΦΩΝΕΤΑΙ ΠΡΟΣ ΤΙΣ ΟΥΣΙΩΔΕΙΣ ΑΠΑΙΤΗΣΕΙΣ ΚΑΙ ΤΙΣ ΛΟΙΠΕΣ ΣΧΕΤΙΚΕΣ ΔΙΑΤΑΞΕΙΣ ΤΗΣ ΟΔΗΓΙΑΣ 1999/5/ΕΚ.

Français

[French]

Par la présente Buffalo Technology Inc. déclare que l'appareil AirStation WLI-U2-KG125S est conforme aux exigences essentielles et aux autres dispositions pertinentes de la directive 1999/5/CE.

Italiano

[Italian]

Con la presente Buffalo Technology Inc. dichiara che questo AirStation WLI-U2-KG125S è conforme ai requisiti essenziali ed alle altre disposizioni pertinenti stabilite dalla direttiva 1999/5/CE.

Latviski

[Latvian]

Ar šo Buffalo Technology Inc. deklarē, ka AirStation WLI-U2-KG125S atbilst Direktīvas 1999/5/EK būtiskajām prasībām un citiem ar to saistītajiem noteikumiem.

Lietuvių

[Lithuanian]

Šiuo Buffalo Technology Inc. deklaruoją, kad šis AirStation WLI-U2-KG125S atitinka esminius reikalavimus ir kitas

1999/5/EB Direktyvos nuostatas.

Nederlands

[Dutch]

Hierbij verklaart Buffalo Technology Inc. dat het toestel AirStation WLI-U2-KG125S in overeenstemming is met de essentiële eisen en de andere relevante bepalingen van richtlijn 1999/5/EG.

Malti

[Maltese]

Hawnhekk, Buffalo Technology Inc. , jiddikjara li dan AirStation WLI-U2-KG125S jikkonforma mal-ħtiġijiet essenzjali u ma provvedimenti oħrajn relevanti li hemm fid-Dirrettiva 1999/5/EC.

Magyar

[Hungarian]

Alulírott, Buffalo Technology Inc. nyilatkozom, hogy a AirStation WLI-U2-KG125S megfelel a vonatkozó

alapvető követelményeknek és az 1999/5/EC irányelv egyéb előírásainak.

Polski

[Polish]

Niniejszym, Buffalo Technology Inc. , deklaruje, że AirStation WLI-U2-KG125S spełnia wymagania zasadnicze oraz stosowne postanowienia zawarte Dyrektywie 1999/5/EC.

Português

[Portuguese]

Buffalo Technology Inc. declara que este AirStation WLI-U2-KG125S está conforme com os requisitos essenciais e outras disposições da Directiva 1999/5/CE.

Slovensko

[Slovenian]

Buffalo Technology Inc. izjavlja, da je ta AirStation WLI-U2-KG125S v skladu z bistvenimi zahtevami in ostalimi relevantnimi določili direktive 1999/5/ES.

Slovensky

[Slovak]

Buffalo Technology Inc. týmto vyhlasuje, že AirStation WLI-U2-KG125S spĺňa základné požiadavky a všetky príslušné ustanovenia Smernice 1999/5/ES.

Suomi

[Finnish]

Buffalo Technology Inc. vakuuttaa täten että AirStation WLI-U2-KG125S tyyppinen laite on direktiivin

1999/5/EY oleellisten vaatimusten ja sitä koskevien direktiivin muiden ehtojen mukainen.

Svenska

[Swedish]

Härmed intygar Buffalo Technology Inc. att denna AirStation WLI-U2-KG125S står i överensstämmelse med de väsentliga egenskapskrav och övriga relevanta bestämmelser som framgår av direktiv 1999/5/EG.

**이 기기는 가정용으로 전자파적합등록을 한 기기로서
주거지역에서는 물론 모든 지역에서 사용할 수 있습니다.**

Taiwan Regulatory Compliance Statement

第十二條

經型式認證合格之低功率射頻電機，非經許可，公司、商號或使用者均不得擅自變更頻率、加大功率或變更原設計之特性及功能。

第十四條

低功率射頻電機之使用不得影響飛航安全及干擾合法通信；經發現有干擾現象時，應立即停用，並改善至無干擾時方得繼續使用。

前項合法通信，指依電信規定作業之無線電信。低功率射頻電機須忍受合法通信或工業、科學及醫療用電波輻射性電機設備之干擾。

在 5.25-5.35 兆赫頻帶內操作之無線資訊傳輸設備,限於室內使用。

Federal Communication Commission Interference Statement

This equipment has been tested and found to comply with the limits for a Class B digital device, pursuant to Part 15 of the FCC Rules. These limits are designed to provide reasonable protection against harmful interference in a residential installation. This equipment generates, uses and can radiate radio frequency energy and, if not installed and used in accordance with the instructions, may cause harmful interference to radio communications. However, there is no guarantee that interference will not occur in a particular installation. If this equipment does cause harmful interference to radio or television reception, which can be determined by turning the equipment off and on, the user is encouraged to try to correct the interference by one of the following measures:

- Reorient or relocate the receiving antenna.
- Increase the separation between the equipment and receiver.
- Connect the equipment into an outlet on a circuit different from that

to which the receiver is connected.

- Consult the dealer or an experienced radio/TV technician for help.

FCC Caution: Any changes or modifications not expressly approved by the party responsible for compliance could void the user's authority to operate this equipment.

This device complies with Part 15 of the FCC Rules. Operation is subject to the following two conditions: (1) This device may not cause harmful interference, and (2) this device must accept any interference received, including interference that may cause undesired operation.

IMPORTANT NOTE:

FCC Radiation Exposure Statement:

This equipment complies with FCC radiation exposure limits set forth for an uncontrolled environment.

This device complies with FCC RF Exposure limits set forth for an uncontrolled

environment, under 47 CFR 2.1093 paragraph (d)(2).

This transmitter must not be co-located or operating in conjunction with any other antenna or transmitter.

This equipment has been SAR-evaluated for use in laptops (notebooks) with USB port configuration.

Buffalo declares that WLI-U2-KG125S (FCC ID: FDI-09102019-0) is limited in CH1~CH11 for 2.4 GHz by specified firmware controlled in U.S.A.

ADDRESS

Buffalo Technology (USA), Inc.
4030 West Braker Lane, Suite 120
Austin, TX 78759-5319

GENERAL INQUIRIES

Email: sales@buffalotech.com

TECHNICAL SUPPORT

North American Technical Support by phone is available 24 hours a day, 7 days a week. (USA and Canada).

Toll-free: (866) 752-6210

ADDRESS

Buffalo Technology (Europe), Inc.
176 Buckingham Avenue,
Slough, Berkshire, SL1 4RD
United Kingdom

GENERAL INQUIRIES

Email: sales@buffalo-technology.com

TECHNICAL SUPPORT

Technical Support in Europe is available between the hours of 9am-6pm (GMT) Monday to Thursday and 9am-4:30pm (GMT) Friday for this product. Customers in Europe can obtain Technical Support using the following information:

E-mail: helpdesk@buffalo-technology.ie | Web: www.buffalo-technology.com