

# Contents

<b>Chapter 1 - Product Overview .....</b>	<b>4</b>
Features .....	4
300 Mbps High Speed Mode.....	4
System Requirements.....	5
Package Contents.....	5
Hardware Overview.....	5
<b>Chapter 2 - Installation.....</b>	<b>6</b>
Installing Wireless Drivers.....	6
Installing Utility .....	10
<b>Chapter 3 - Connect to a Wireless Network.....</b>	<b>13</b>
Automatic Secure Setup (AOSS/WPS (PBC) ) .....	13
Windows 7/Vista (Client Manager V) .....	14
Windows XP/2000 (Client Manager 3).....	15
Automatic Secure Setup (WPS (PIN) ) .....	16
Windows 7/Vista (Client Manager V) .....	16
Windows XP (Client Manager 3).....	20
Manual Setup (Client Manager) .....	22
Windows 7/Vista (Client Manager V) .....	22
Windows XP/2000 (Client Manager 3).....	25
Windows Vista (WLAN AutoConfig) .....	27
Windows XP (Wireless Zero Configuration).....	30

## **Chapter 4 - Client Manager ..... 31**

---

Software Overview .....	31
Using Client Manager V for Windows 7/Vista .....	31
Opening and Closing Client Manager .....	31
Main Screen.....	32
Automatic Secure Setup and Advanced Setup .....	33
SSID / WPS-PIN selection .....	34
Searching Wireless Access Points.....	35
Wireless Network Information .....	36
WPS-PBC / AOSS selection .....	37
Wireless Status .....	38
Wireless LAN Diagnostic .....	40
Profile List .....	41
Wireless Properties.....	42
Network Properties .....	43
Browser Properties .....	44
Printer Properties .....	45
Using Client Manager 3 with Windows XP / 2000 .....	46
Status.....	47
Scan.....	49
Connect.....	50
Profiles .....	51
Profile Information (Basic).....	52
Profile Information (Network) .....	54
Profile Information (Browser) .....	55
Profile Information (Printers).....	56
System Tray Menu .....	57
Option Menu .....	58

## **Chapter 5 - Trouble Shooting ..... 60**

---

The Computer does not recognize the WLI-UC-G300HP Wireless Adapter.....	60
Cannot connect to the network wirelessly.....	60
You forgot the AP's SSID, Encryption KEY, or Password.....	60
The link speed is slower than 300 Mbps (Maximum link speed is only 144Mbps).....	61
Other Tips.....	61

## **Appendix ..... 64**

---

300 Mbps Mode settings .....	64
Specifications .....	65
Removing the device from the computer .....	66
Windows Vista/XP.....	66
Windows 2000 .....	66
Uninstalling the Software .....	66
Uninstalling the Drivers .....	66
TCP/IP Settings in Windows .....	67
Windows 7 .....	67
Windows Vista .....	68
Windows XP.....	69
Antenna Information.....	70
FCC / CE / R&TTE Information .....	71
Environmental Information .....	76
Warranty Information.....	77
Contact Information (USA / Canada).....	78
Contact Information (Europe).....	79

# Chapter 1 - Product Overview

## Features

---

With support for current Wireless-N, Wireless-G, and Wireless-B standards, the AirStation can transfer data to and from all standard 2.4 GHz wireless network devices.

AOSS (AirStation One-touch Secure System) and WPA (Wi-Fi Protected Setup) make connection with wireless devices easier.

AirStation is equipped with following security features.

- WPA-PSK (TKIP/AES)
- WPA2-PSK (TKIP/AES)
- WEP (128/64bit)

Thanks to a movable antenna, you can enjoy a comfortable radio environment without moving your laptop computer.

You can verify the reception at 3 levels with LED display.

## 300 Mbps High Speed Mode

---

300 Mbps is the link speed when using 2 channel Wireless-N mode. It represents actual wireless data speeds, including overhead. Because the overhead is not available for user data transfer, usable wireless throughput will be substantially slower.

## System Requirements

---

Computer should be IBM/PC compatible (OADG specification) with a USB 2.0 port and a CD-ROM drive. \*

\*This product does not support computers equipped with dual processors (computers with two physical CPUs). Computers with Dual core CPU's are supported.

\*AirStation does not support Windows Vista (32 bit) Standby mode.

Compatible OS

Windows 7 (32 bit / 64 bit) / Vista (32 bit) / XP / 2000

\*Service Pack 2 or later is required for Windows XP.

\*Service Pack 4 and Internet Explorer 5.5 or later are required for Windows 2000.

## Package Contents

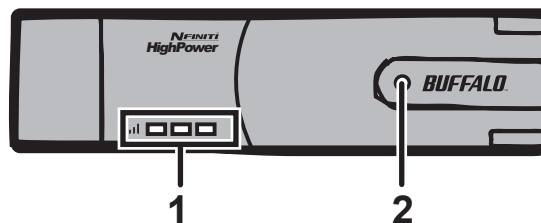
---

The following items are included with your AirStation. If any of the items are missing, please contact your vender.

- WLI-UC-G300HP ..... 1
- USB cable ..... 1
- Air Navigator CD..... 1
- Quick Setup Guide..... 1

## Hardware Overview

---



- 1** Signal LED (Green)      You can check the strength of reception of this unit by looking at the number of LED lights lit. (Maximum of 3 lights illuminated)
- 2** ACT LED (Blue)        Flashes when sending/receiving data.

# Chapter 2 - Installation

## Installing Wireless Drivers

---

Follow the instruction below to install drivers. Do not connect the unit to your computer yet.

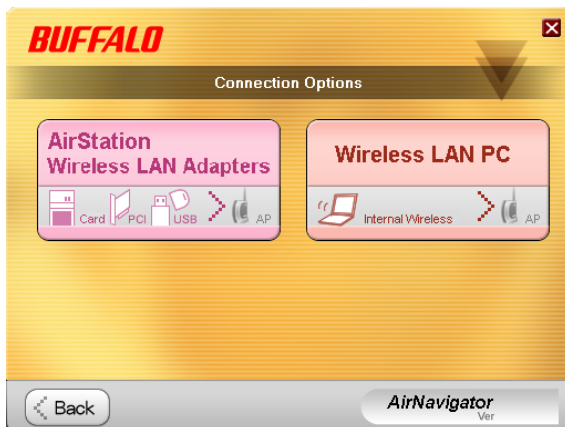
- 1 Boot your computer and insert AirNavigator CD. The AirNavigator Setup Wizard will launch automatically.

Note: If the AirNavigator Setup Wizard doesn't launch, double click [My Computer] > CD-ROM drive icon > [AirNavi.exe] to launch manually.

- 2 Click [Begin Installation].



- 3 Click [AirStation Wireless LAN Adapters].



4



Disable any firewalls, and click [Next].

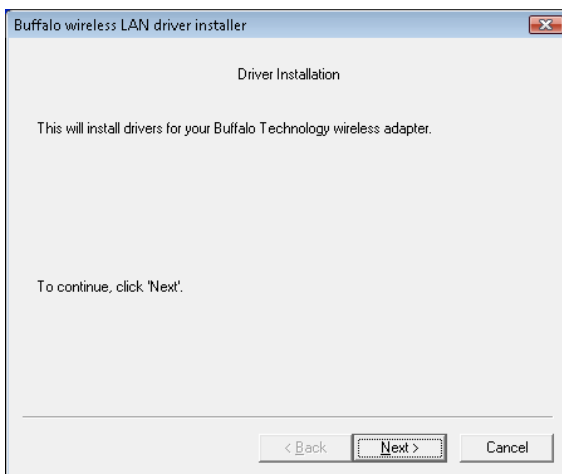
5



Click [Install].

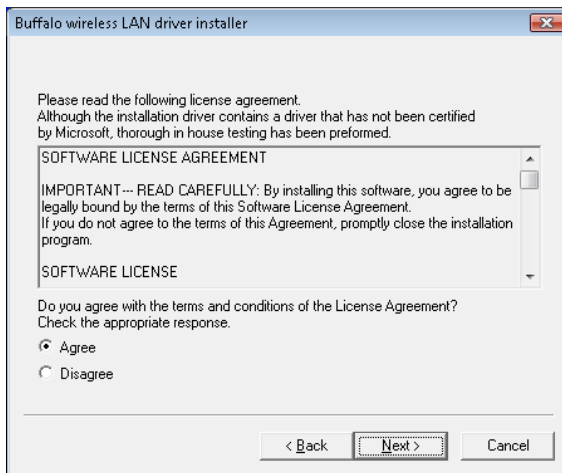
- Note:
- If you insert the check mark into the check box for Install Wireless Client Manager, you can install Client Manager as well as drivers.
  - Refer to the instructions on page 11 to install Client Manager after installing drivers.

6



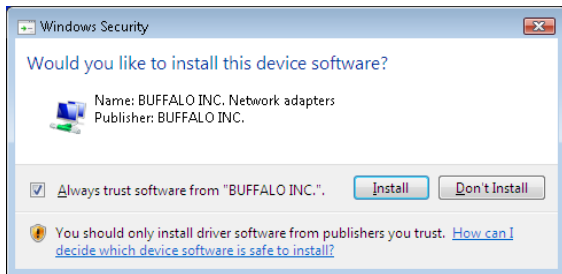
Click [Next].

7



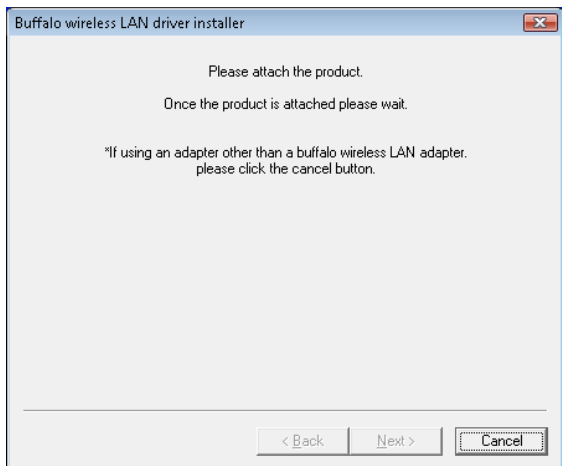
Read the license agreement, select [Agree], then click [Next].

8



When the screen to the left is displayed, put a check mark next to "Always trust software from BUFFALO INC.," and click [Install].

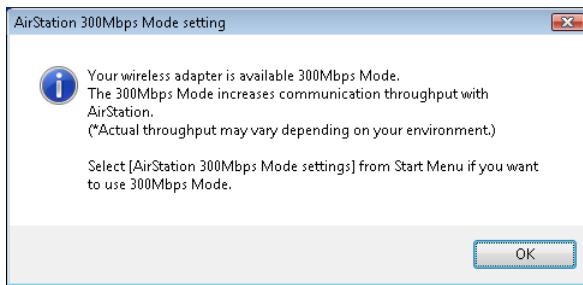
9



When the screen to the left is displayed, attach the AirStation to your computer. Drivers will be installed automatically.

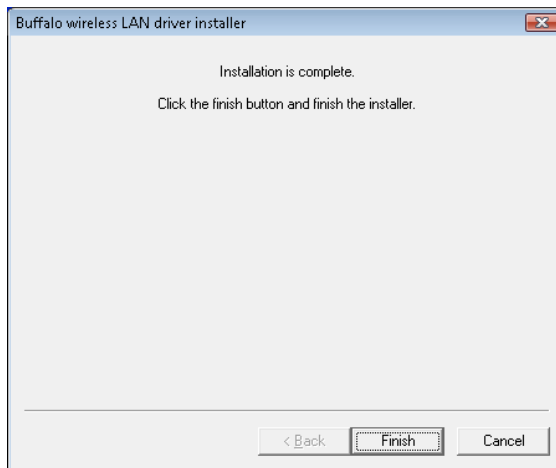


10



Click [OK].

11



After the drivers are installed, the screen at left will be displayed. Click [Finish].

Note: If you checked the box to Install Wireless Client Manager (page 8), then the installation screen for Client Manager will be displayed after this screen. Follow the instructions on the screen to install Client Manager.

Drivers are now installed.

## Installing Utility

---

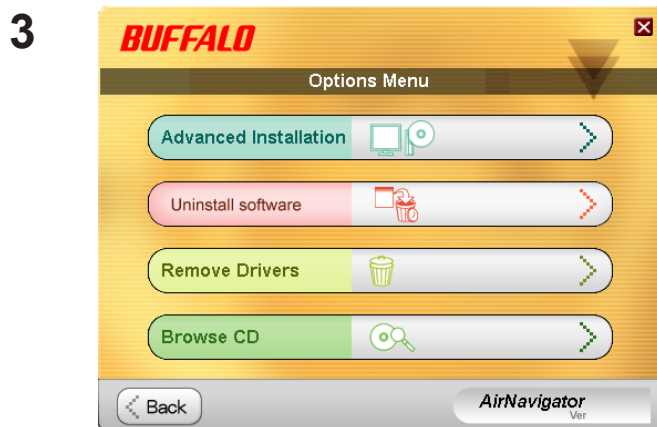
Follow the procedure below to install *Client Manager*.

- 1 Boot your computer and insert the AirNavigator CD. The AirNavigator Setup Wizard will launch automatically.

Note: If AirNavigator Setup Wizard is not displayed, double click [My Computer] icon > CD-ROM drive icon > [AirNavi.exe].



Click [Options].



Click [Advanced Installation].

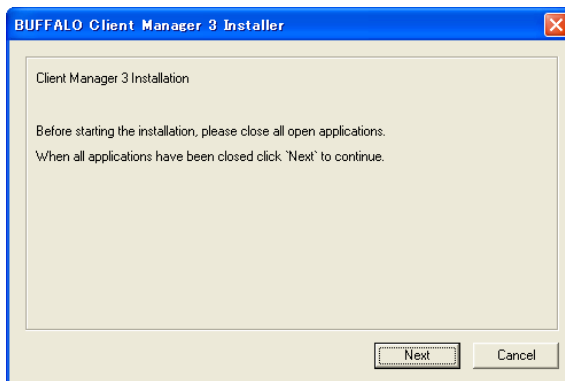
4



Check the box for [Install Wireless Client Manager] and click [Install].

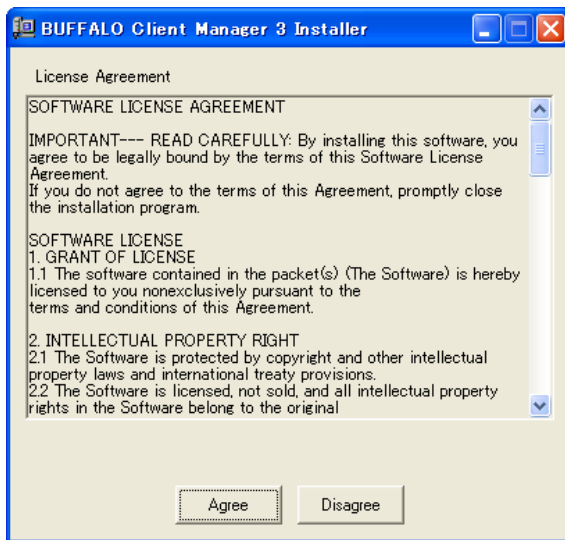
Note: Use Client Manager V with Windows Vista or Client Manager 3 with Windows XP/2000.

5



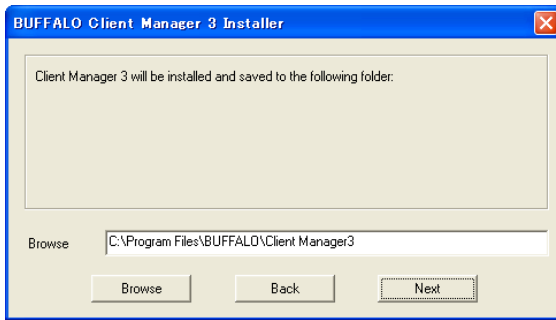
Click [Next].

6



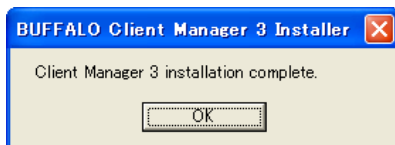
Read the license agreement and select [Agree].

7



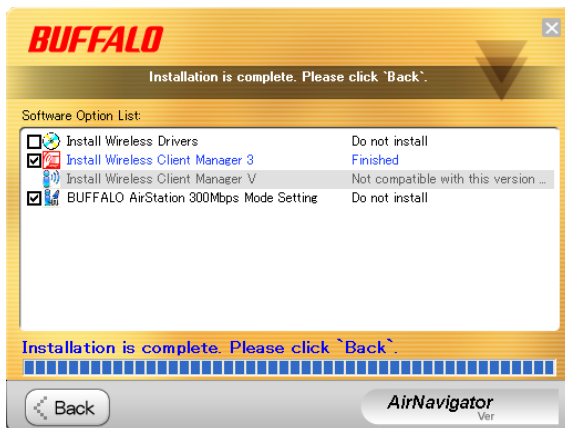
Click [Next].

8



Click [OK].

9



Click [Back].

10



Click [X] at the top right corner of the window to close it.

Client Manager is now installed.

# Chapter 3 - Connect to a Wireless Network

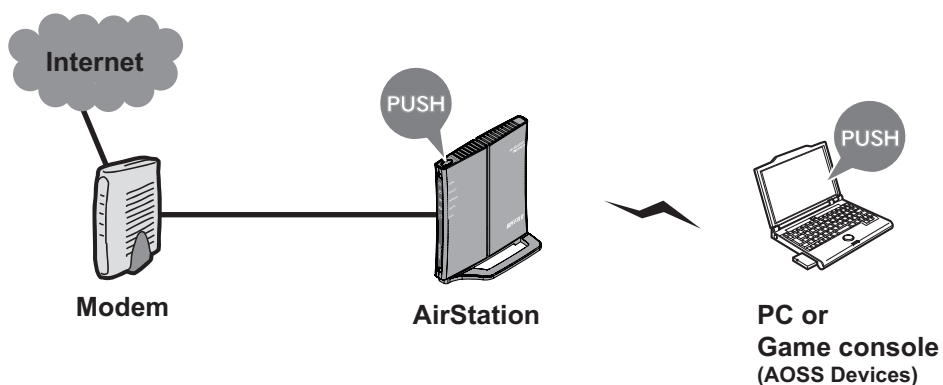
## Automatic Secure Setup (AOSS/WPS (PBC) )

---

AOSS and WPS are systems which enables you to automatically configure wireless LAN settings. Just pressing the buttons will connect wireless devices and complete security settings. Utilize this system to connect to wireless devices, computers, or game machines which support AOSS or WPS.



AOSS (AirStation One-Touch Secure System) is technology developed by BUFFALO. WPS was created by the Wi-Fi Alliance.

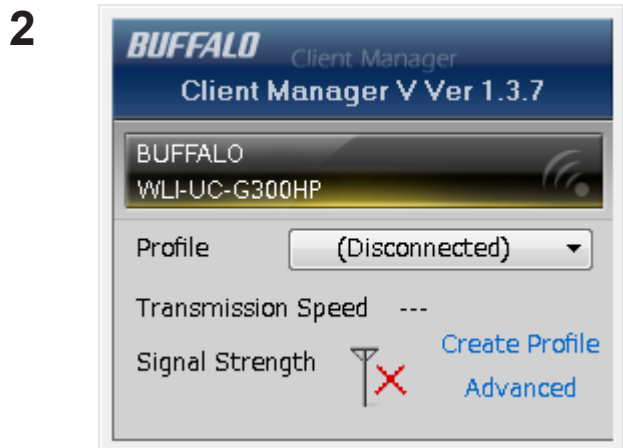


You need to have Client Manager V and Client Manager 3 installed from the CD attached to this unit in advance to connect using AOSS/WPS (PBC). (page 11)

## Windows 7/Vista (Client Manager V)

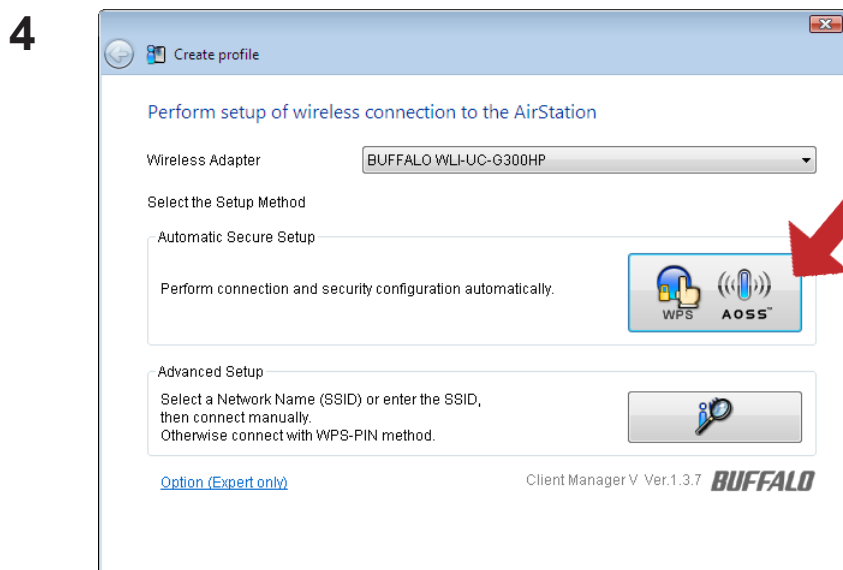
If you are using Windows 7/Vista, use the included Client Manager V software to connect wirelessly with AOSS/WPS(PBC).

1 Click [Start] > [All Programs] > [BUFFALO] > [AirStation Utility] > [Client Manager V].



2 When the screen at left is displayed, click [Create Profile].

3 When the message "A Program needs your permission to continue" appears, click [Continue].



4 When the screen shown at left is displayed, click the [WPS AOSS] button.

Follow the instructions displayed on the screen.


After you configured and if the message "Connection has been Completed" is displayed on Client Manager V, then you have completed the connection by AOSS/WPS (PBC).

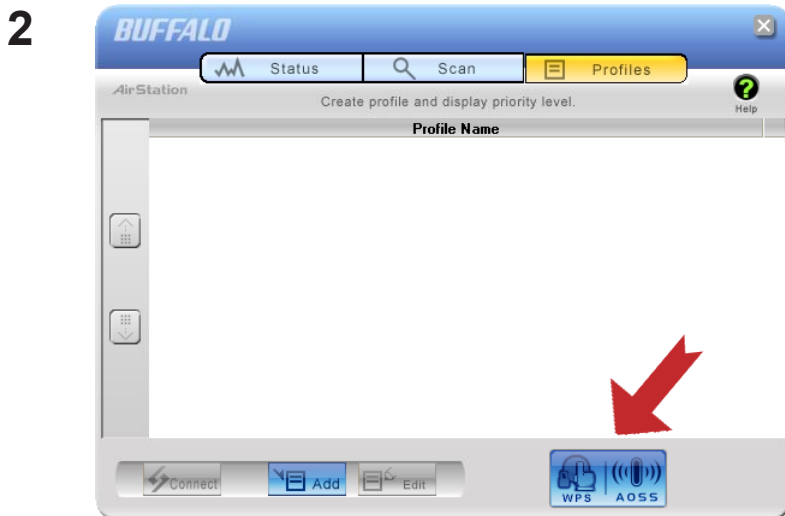
(If "Set Network Location" screen is displayed, select "Home", "Work", or "Public location" depending on the environment in which the AirStation will be used.

## Windows XP/2000 (Client Manager 3)

If you are using Windows XP, use the included Client Manager 3 software to connect wirelessly with AOSS/WPS.

Note: Windows 2000 does not support wireless connection using WPS (PBC). (It uses AOSS wireless connection instead).

1 Right click on the icon  in the system tray, and select [Profile].



When the screen shown at left is displayed, click [WPS AOSS] button.

Follow the instructions displayed on the screen.

You have completed the AOSS/WPS (PBC) connection when the message "Security setup and connection have been Completed" is displayed in Client Manager 3.

## Automatic Secure Setup (WPS (PIN) )

---

WPS (Personal Identification Number) uses the mechanism which register the unique number generated by the utility program (Client Manager) included with this product to an access point and connect wirelessly. Use this feature when connecting to an access point which supports WPS (PIN).

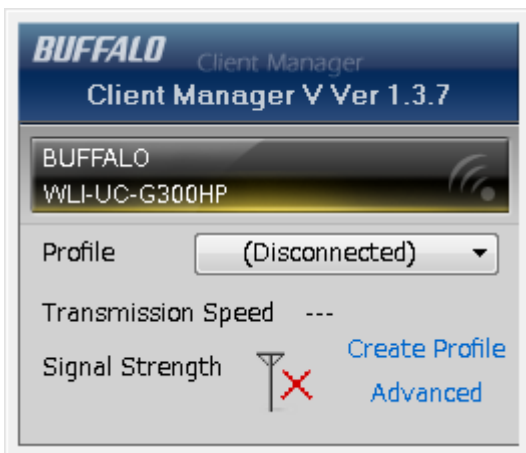
You need to have Client Manager V and Client Manager 3 installed from the CD attached to this unit in advance in order to connect wirelessly using WPS (PIN). (page 11)

### Windows 7/Vista (Client Manager V)

If you are using Windows 7/Vista, use Client Manager which comes with this package and follow the procedure below to connect wirelessly with WPS (PIN).

**1** Click [Start] > [All Programs] > [BUFFALO] > [AirStation Utility] > [Client Manager V].

**2**

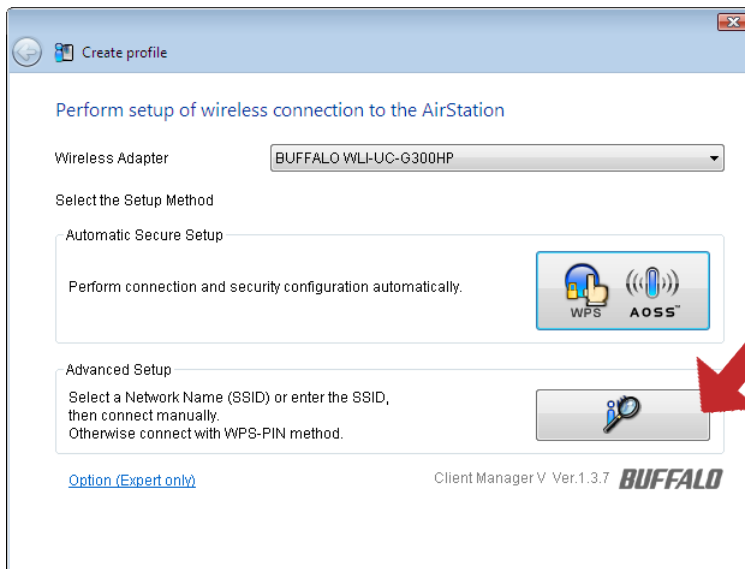


When the screen on the left is displayed, click [Create Profile] button.

**3** When the message "A Program needs your permission to continue", click [Continue].

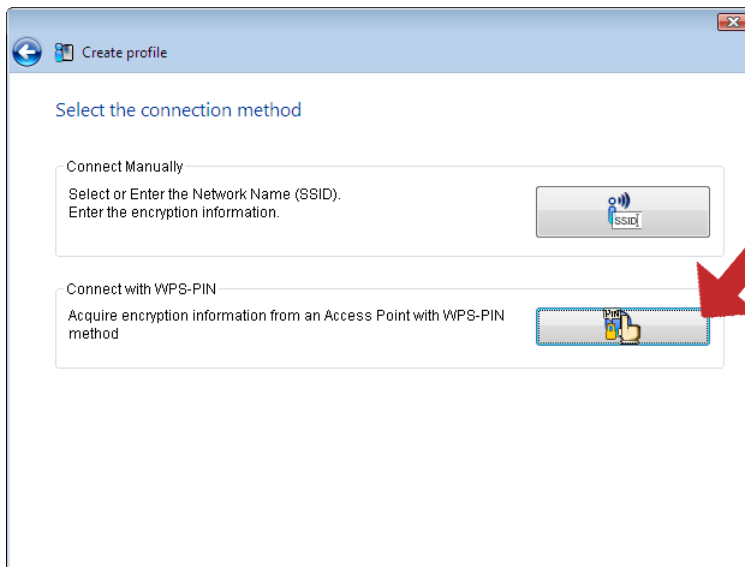


4



When the screen which looks like the illustration on the left displayed, click [Advanced Setup] button.

5



When the screen which looks like the illustration on the left displayed, click [WPS-PIN] button.

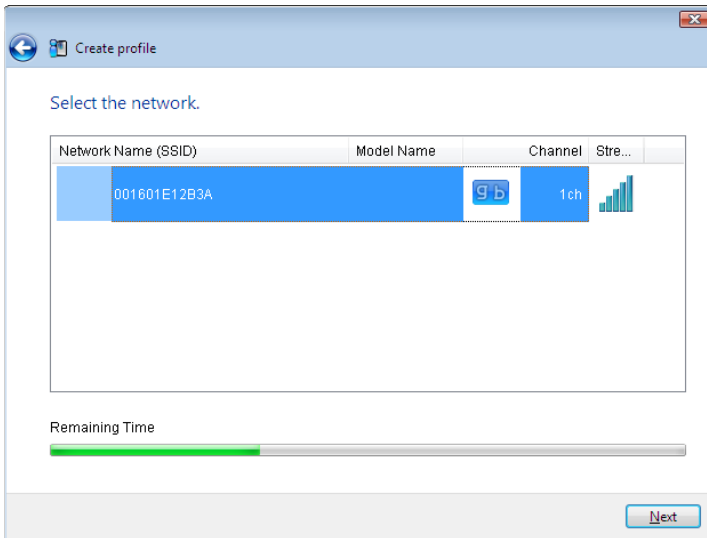
6



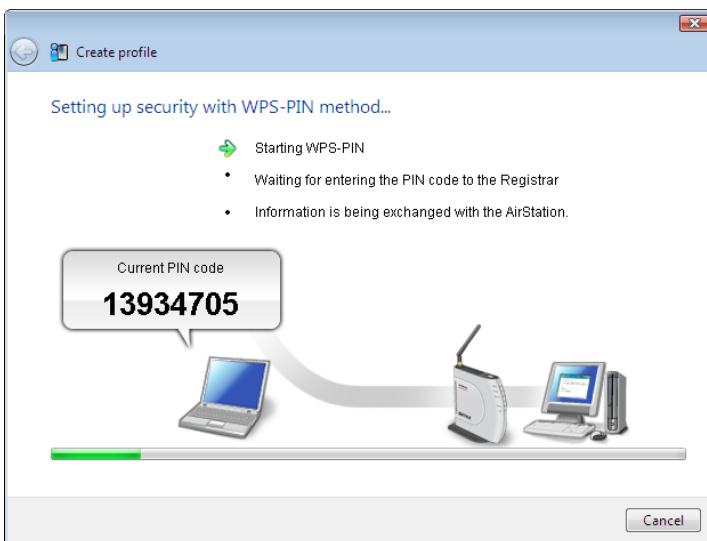
When the PIN code is displayed, write it down.

After you write the PIN code down on a piece of paper, click [Next].

7



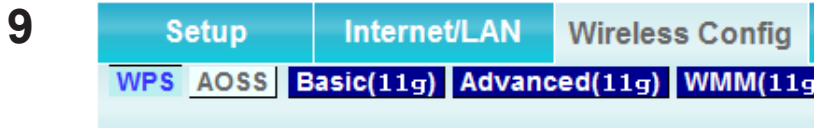
Select the access point you are going to connect, and click [Next].



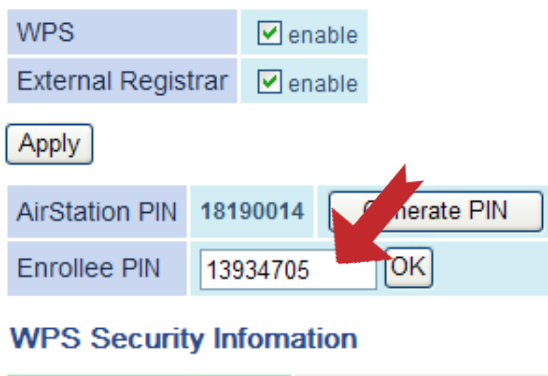
This screen will be displayed.

- 8 Use an administrative computer which is connected to an access point with a wire in order to login to that access point. The screen to enter the PIN code will be displayed.

Note: If the access point you are trying to connect is the AirStation, click [Wireless Config]> [WPS] on the TOP of the configuration screen. The screen to enter the PIN code will be displayed.



On the configuration screen of the access point, enter the PIN code you write down in step 6.



Note: If the access point you are trying to connect is the AirStation, enter the PIN code in [Enrollee PIN] and click [OK].

Follow the instructions displayed on the screen to configure.


You have completed the connection with WPS (PIN) after you configured and when the message "Connection has been Completed" is displayed in Client Manager V.

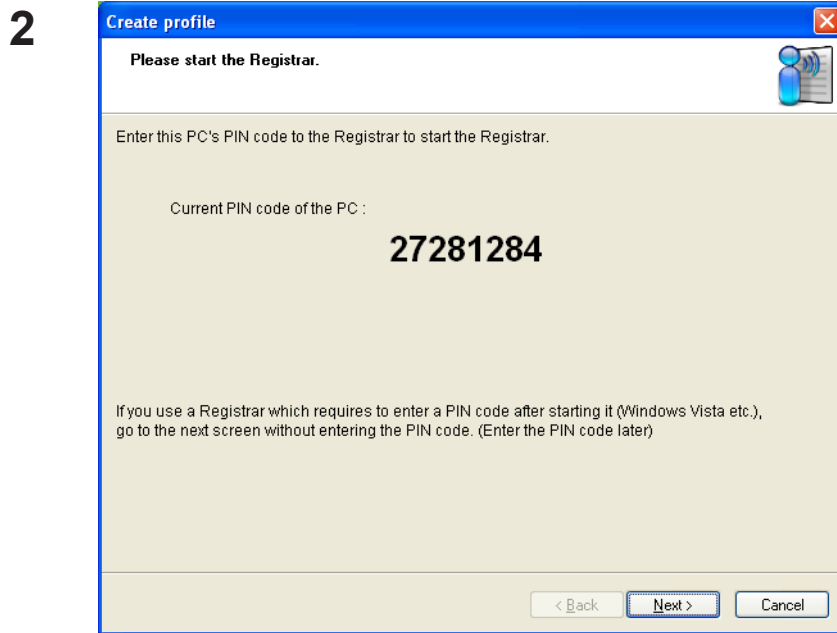
(If "Set Network Location" screen is displayed, select "Home", "Work", or "Public location" depending on the environment in which the AirStation will be used.)

## Windows XP (Client Manager 3)

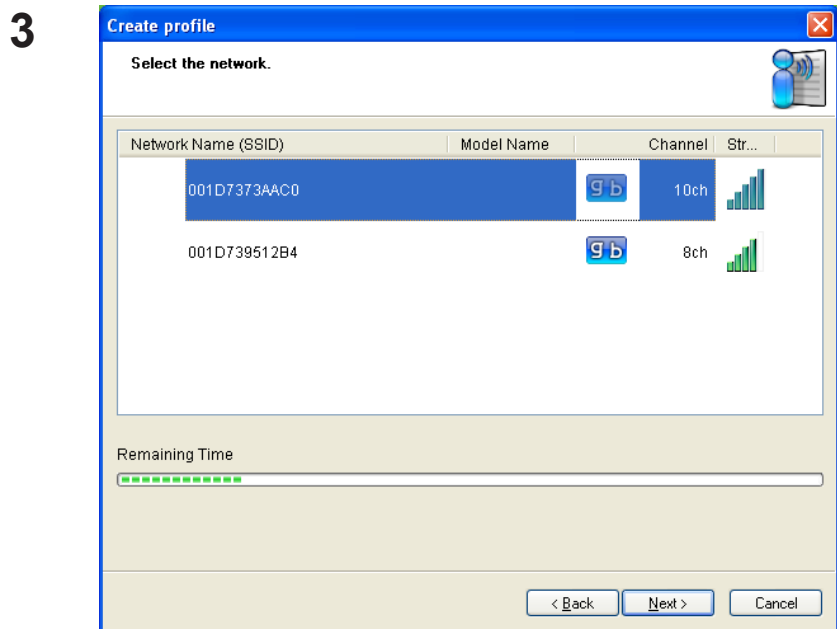
If you are using Windows XP, use Client Manager 3 which comes with this package and follow the procedure below to connect wirelessly with WPS (PIN).

Note: Windows 2000 does not support WPS (PIN).

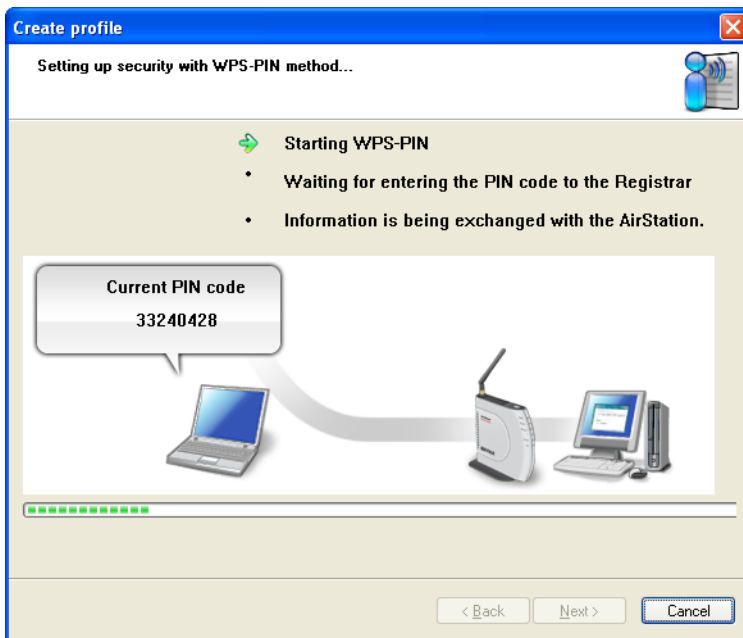
- 1 Right click on the icon  displayed in the system tray, and select [Easy Connection] > [WPS PIN Code type].



When the PIN code is displayed, write it down. Then, click [Next].



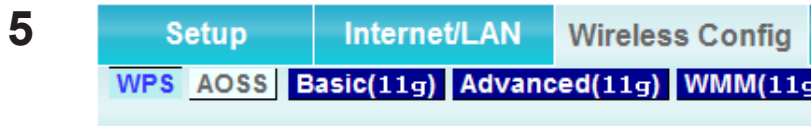
Select the access point you are going to connect, and click [Next].



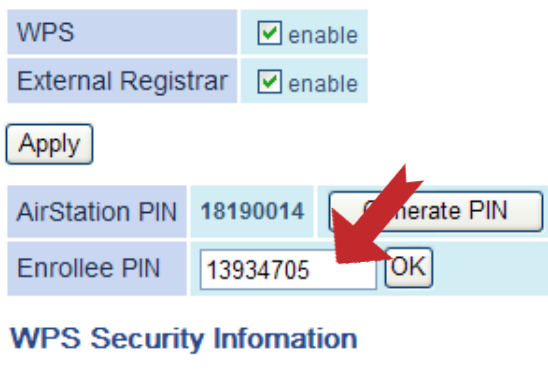
This screen will be displayed.

- 4 Use a computer with a wired Ethernet connection to log in to the access point. The screen to enter the PIN code will be displayed.

Note: If the access point you are trying to connect is a Buffalo AirStation, click [Wireless Config] > [WPS] on the TOP of the configuration screen. The screen to enter the PIN code will be displayed.



On the configuration screen of the access point, enter the PIN code you wrote down in step 2.



Note: If the access point you are trying to connect is a Buffalo AirStation, enter the PIN code in [Enrollee PIN] and click [OK].

Follow the instructions displayed on the screen to configure. When "Connection has been completed" is displayed, you are connected.

## Manual Setup (Client Manager)

---

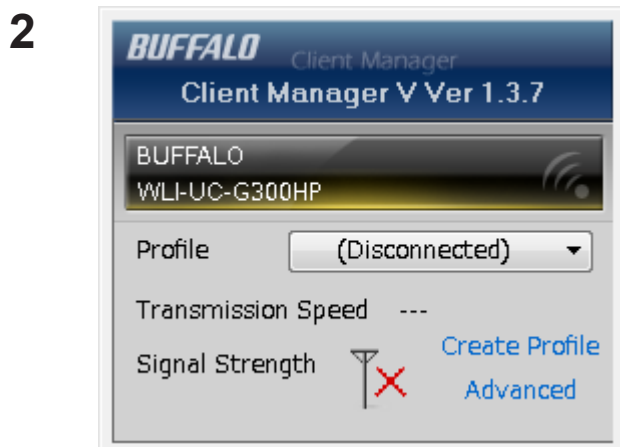
You may also connect to an Access point manually, without using AOSS/WPS. The procedure varies depending on the version of Windows used.

First, install Client Manager from the included CD. (page 11)

### Windows 7/Vista (Client Manager V)

With Windows 7/Vista, use Client Manager V to connect wirelessly.

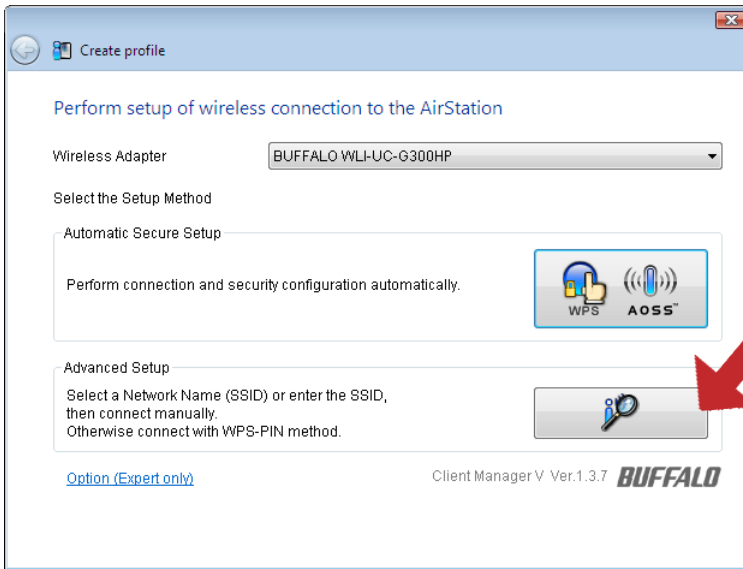
**1** Click [Start] > [All Programs] > [BUFFALO] > [AirStation Utility] > [Client Manager V].



When this screen is displayed, click [Create Profile].

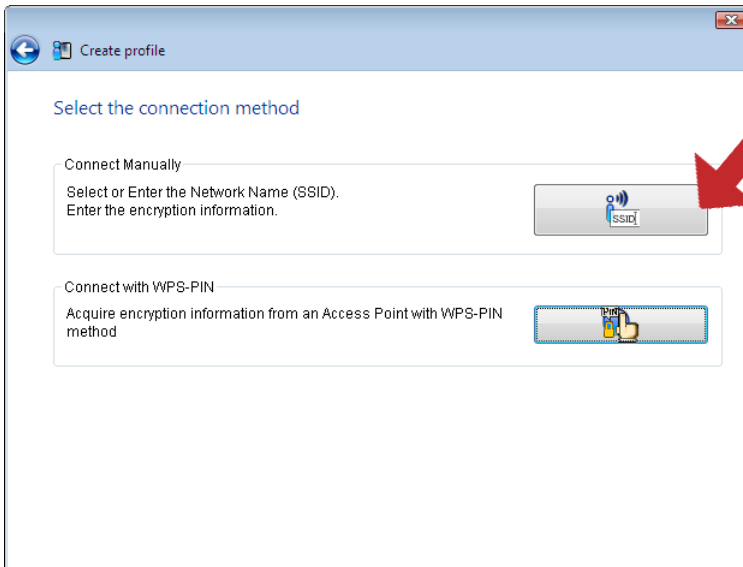
**3** When the message "A Program needs your permission to continue", click [Continue].

4



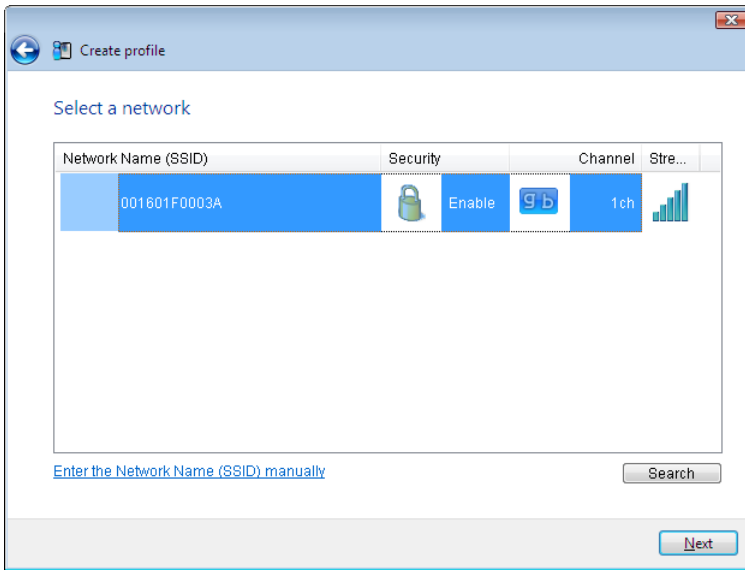
Click [Advanced Setup].

5



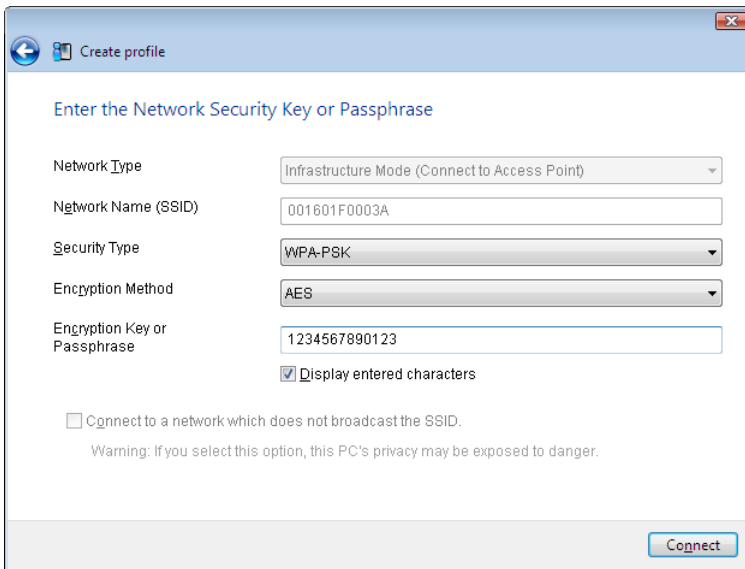
Click [Connect Manually].

6



Select your access point, and click [Next].

7




Enter your [Encryption Key] (passphrase) and click [Connect].

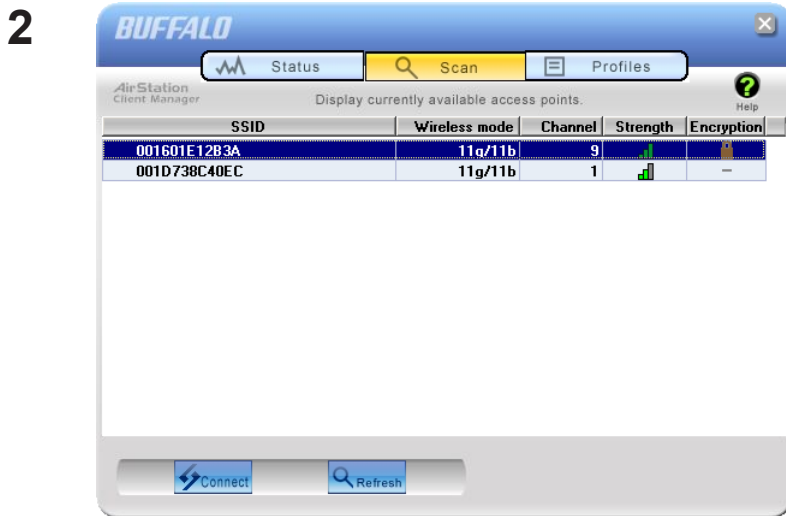
Follow the instructions in the wizard to connect. When "Connection Complete" is displayed, setup is completed. If "Set Network Location" is displayed, then select "Home", "Work", or "Public location" depending on the environment in which the AirStation will be used.



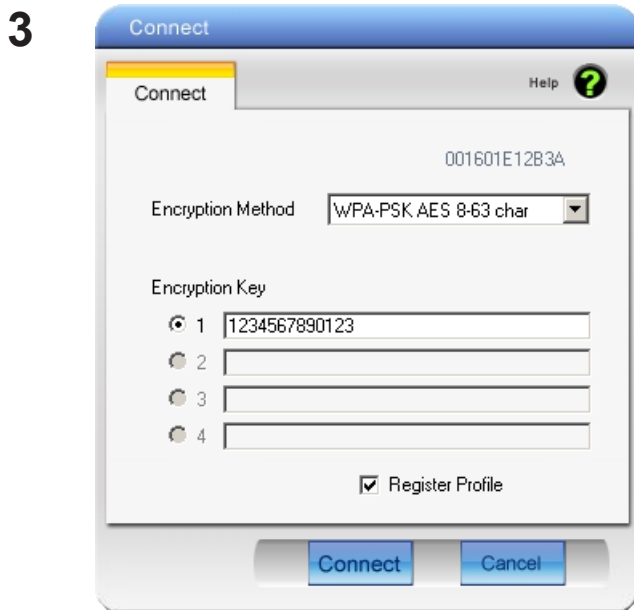
## Windows XP/2000 (Client Manager 3)

Client Manager 3 is a wireless connection utility for Windows XP/2000.

1 Right click on the  icon in the system tray, and select [Scan].



Select the access point that you are going to connect to and click [Next].



Choose your [Encryption Method] and enter an [Encryption Key]. Click [Connect].


Follow the instructions on the screen to connect.

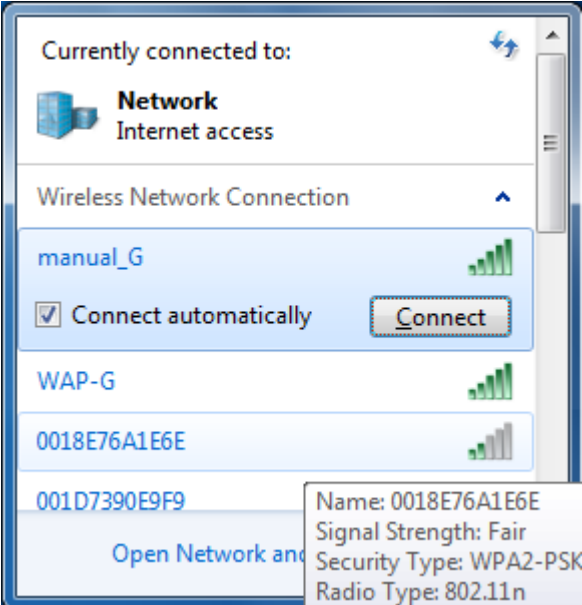
## Manual Setup (Windows Utility)


You can connect to an access point without installing or using Client Manager. Windows includes a built-in wireless utility. The procedure varies depending on the version of Windows used.

### Windows 7 (WLAN AutoConfig)

With Windows 7, use WLAN AutoConfig to connect to the AirStation.

- 1 Click on the network icon  in the system tray.

- 2  Select the target AirStation's name and click [Connect]. If you will be connecting to this device in the future, checking [Connect automatically] is recommended.

- 3  Enter the encryption key and click [OK].

Follow the instructions on the screen to connect.

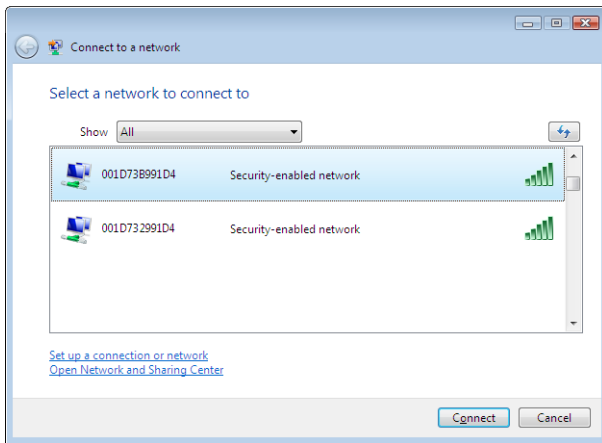
## Windows Vista (WLAN AutoConfig)

You can use WLAN AutoConfig to connect to a wireless Access Point:

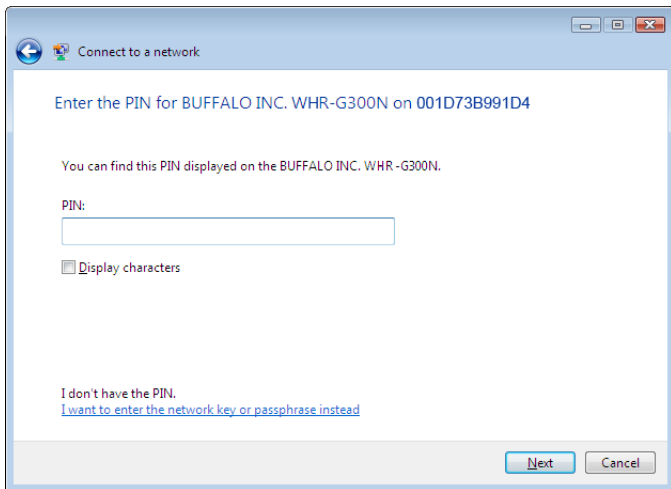
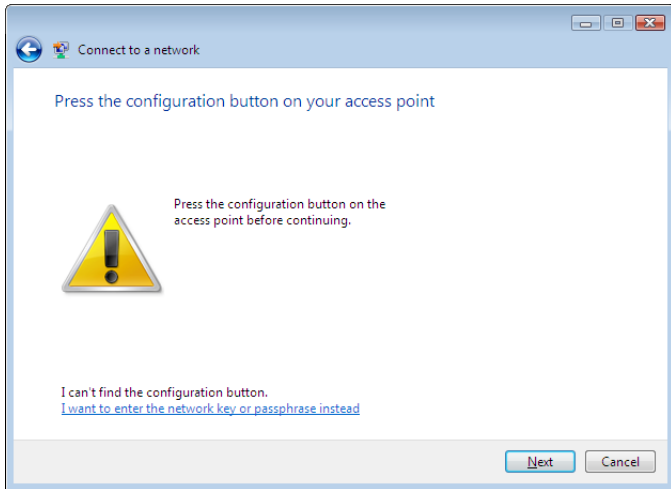
**1** Right click on the wireless network icon in the system tray.

**2** Click [Connect to a network].

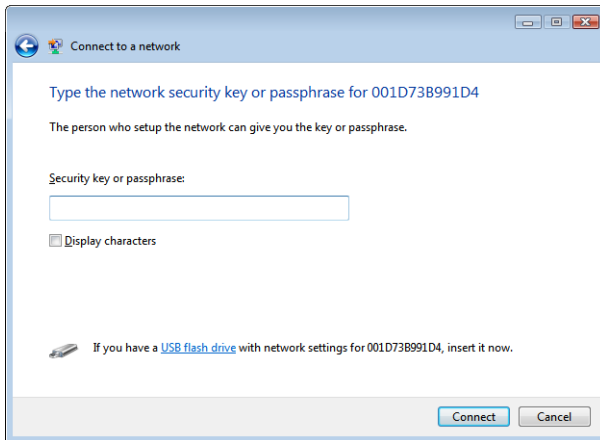
**3** Select your wireless network and click [Connect].



If the screen below is displayed, click “I want to enter the network key or passphrase instead”.  
(Otherwise, go to step 4)



4



Enter the encryption key and click [Connect].

Follow the instructions displayed on the screen to finish configuration. If the “Set Network Location” screen is displayed, select “Home”, “Work”, or “Public location” depending where you’re using the AirStation.

## Windows XP (Wireless Zero Configuration)

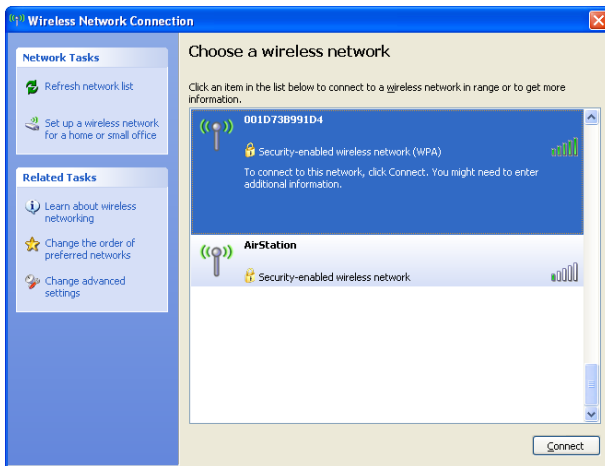
Windows XP includes a built-in utility to connect to your wireless Access Point.

Note: If Client Manager 3 is installed on your computer, then Windows Zero Config is disabled. Uninstall Client Manager 3 to use Windows Zero Config, or just use Client Manager 3 to connect to the AirStation.

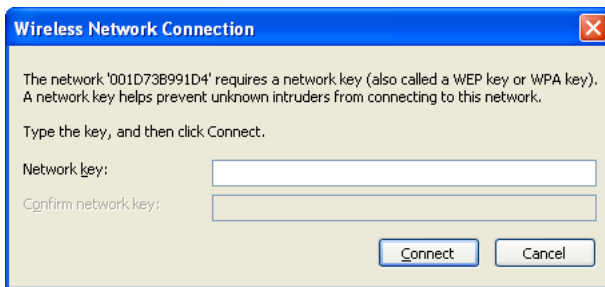
**1** Right click on the wireless network icon in the system tray.

**2** Click [View Available Wireless Networks].

**3** Select a wireless network to connect to and click [Connect].



**4** Enter the encryption key (passphrase) and click [Connect].



Follow the instructions on the screen to connect.

# Chapter 4 - Client Manager

## Software Overview

---

Client Manager is utility software used to connect to an access point on the network or to verify the connection between an access point and your computer. It is included with this device.

Note: There are two versions of Client Manager with this unit, "V" and "3".  
Client Manager V supports Windows 7/Vista.  
Client Manager 3 supports Windows XP/2000.

## Using Client Manager V for Windows 7/Vista

---

### Opening and Closing Client Manager

- When you install Client Manager, it will be added to your Startup folder and will automatically launch with Windows. If Client Manager does not launch automatically, click [Start] > [All Programs] > [BUFFALO] > [AirStation Utility] > [ClientManager V] .
- Right click on the icon of Client Manager in the system tray and click [Exit] to close Client Manager. The appearance of Client Manager according to its connection status:



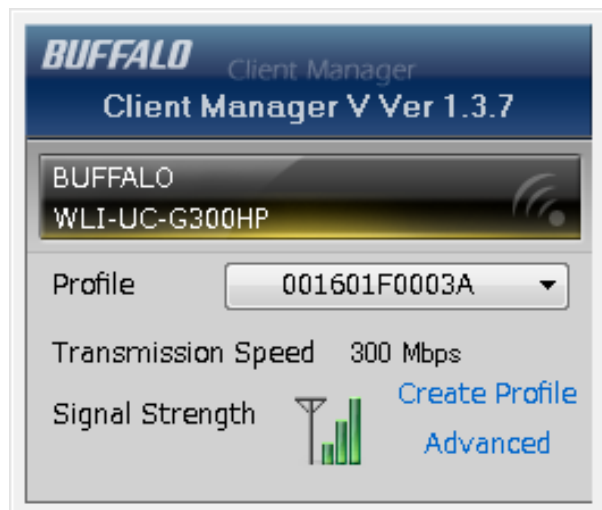
No wireless connection.



Communicating via an access point.

## Main Screen

The Main screen displays the current connection status. You can perform the following operations from this screen.

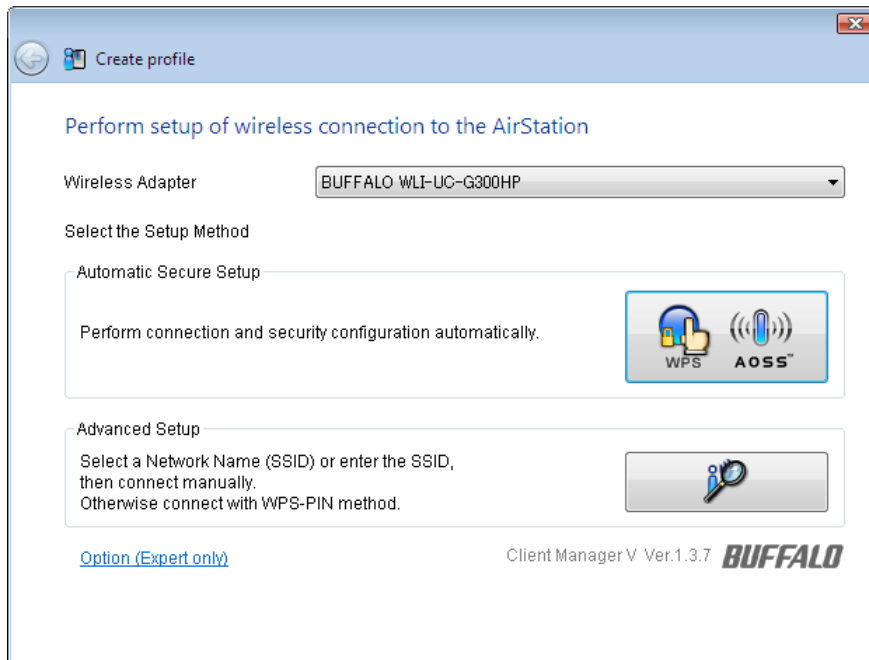


Parameter	Meaning
Profile	Displays information about the current connection points. If you have multiple connection points, you can switch among them.
Transmission Speed	Displays the current connection speed.
Signal Strength	Displays the current signal strength.
Create Profile	Click this to display the Automatic Secure Setup and Advanced Setup screen (page 33).
Advanced	Click this to display the Wireless Status screen.



## Automatic Secure Setup and Advanced Setup

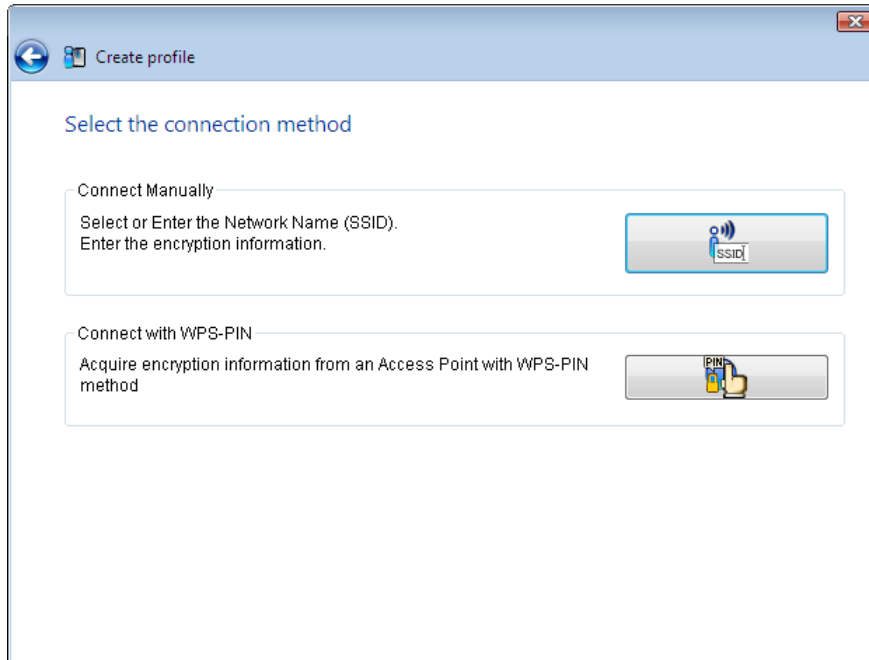
There are two ways to connect to an access point: automatic or manual. In the following wizard, automatic setup will be referred to as “AOSS/WPS” and manual setup will be referred to as “Advanced Setup”.



Parameter	Meaning
Wireless Adapter	Displays names of currently used wireless devices.
Automatic Secure Setup	Clicking this will search for an AOSS or WPS compatible access point to connect to automatically.
Advanced Setup	Click this to configure your wireless settings manually. It will display the SSID/WPS-PIN selection screen (page 34).
Option (Expert only)	Click this to specify whether you use AOSS or WPS (PBC) for connection in Automatic Secure Setup. It displays the WPS-PBC/AOSS selection screen (page 37).

## SSID / WPS-PIN selection

This screen lets you select whether to connect to an access point by specifying the SSID or by entering a WPS PIN.




---

### Parameter

### Meaning

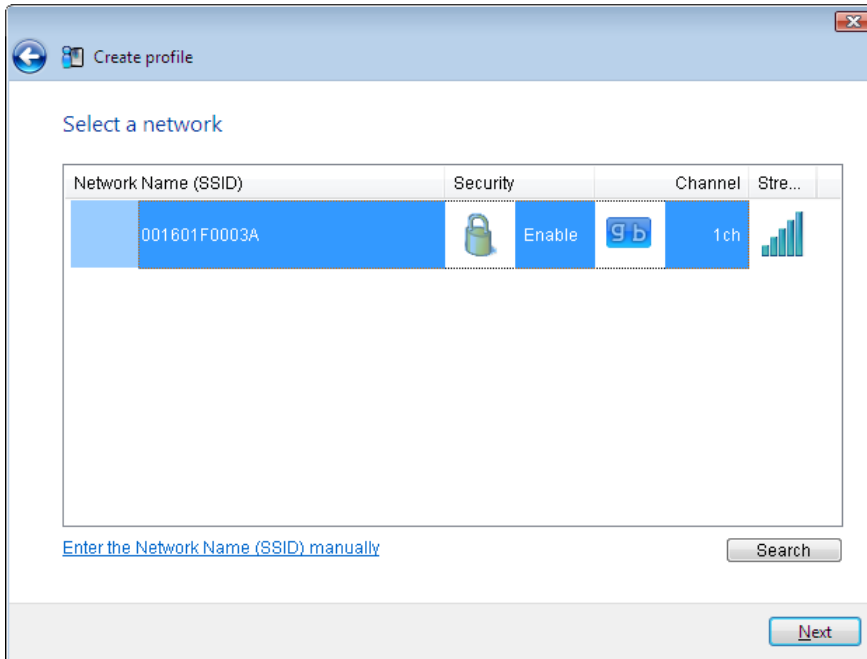
---

Connect Manually	Specify SSID of an access point and configure connection settings. Click here to display the Searching Wireless Access Points screen (page 35).
Connect with WPS-PIN	Click this to connect to a wireless access point by entering its WPS PIN.

---

## Searching Wireless Access Points

The screen to list available wireless access points in your area. You can select an access point and enter network information manually to connect.



Parameter	Meaning
Network Name (SSID)	Displays the SSID of each available access point.
Security	Displays whether or not the access point uses encryption.
Channel	Displays the wireless channel used by an access point.
Strength	Displays the signal strength of an access point.
Enter the Network Name (SSID) manually	Click this to enter an SSID manually and display the Wireless Network Information screen (page 36).
Search	Click here to search for available access points again.
Next	Click this to display the Wireless Network Information screen (page 36).

## Wireless Network Information

Configure wireless connection settings.

The screenshot shows a 'Create profile' dialog box with the following fields and options:

- Network Type:** Infrastructure Mode (Connect to Access Point)
- Network Name (SSID):** [SSID]
- Security Type:** Open
- Encryption Method:** No Encryption
- Encryption Key or Passphrase:** [Not enter]
- Display entered characters
- Connect to a network which does not broadcast the SSID.

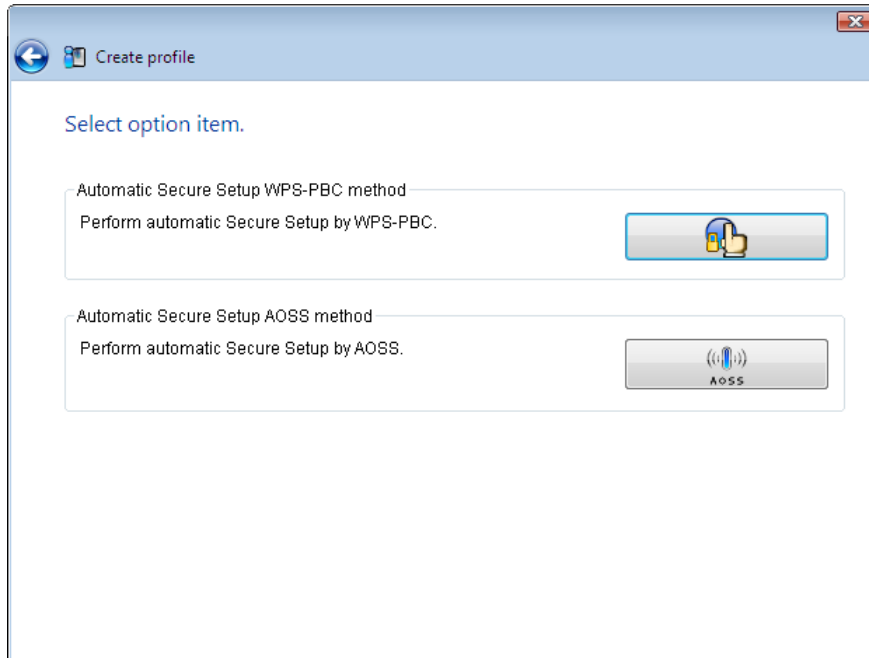
Warning: If you select this option, this PC's privacy may be exposed to danger.

Connect

Parameter	Meaning
Network Type	Select a type of connection.
Network Name (SSID)	Enter the SSID of an access point.
Security Type	Select the security type of the selected access point.
Encryption Method	Select the encryption method of the selected access point.
Encryption Key or Passphrase	Enter the encryption key for the access point.
Connect to a network which does not broadcast the SSID	Check this box to connect to a hidden SSID that is not broadcast.
Connect	Connect to the access point.

## WPS-PBC / AOSS selection

You may automatically connect to an access point by WPS (PBC) or AOSS.



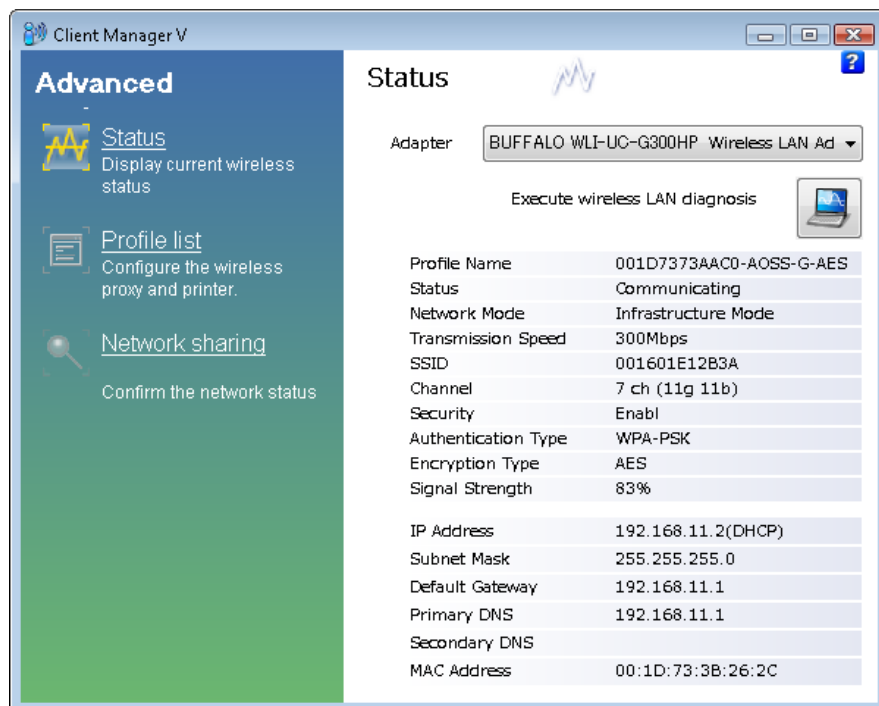
---

Parameter	Meaning
Automatic Secure Setup WPS-PBC method	Click this to automatically connect to an access point that supports WPS (PBC).
Automatic Secure Setup AOSS method	Click this to automatically connect to an access point that supports AOSS.

---

## Wireless Status

This screen displays the current connection status.



Parameter	Meaning
Adapter	Displays the name of the current wireless client.
Execute wireless LAN diagnostics	Opens the Wireless LAN Diagnoses wizard (page 40).
Profile Name	Displays the current profile name.
Status	Displays the current transmission status.
Network Mode	Displays the current network mode.
Transmission Speed	Displays the current transmission speed.
SSID	Displays SSID of the currently connected access point.
Channel	Displays the wireless channel currently used.

---

<b>Parameter</b>	<b>Meaning</b>
Security	Displays whether encryption is currently enabled or not.
Authentication Type	Displays the type of authentication currently used.
Encryption Type	Displays the type of encryption currently used.
Signal Strength	Displays the current signal strength.
IP Address	Displays the IP address assigned to your wireless client.
Subnet Mask	Displays the subnet mask assigned to your wireless client.
Default Gateway	Displays the default gateway address.
Primary DNS	Displays the primary DNS address.
Secondary DNS	Displays the secondary DNS address.
MAC Address	Displays the MAC address of your wireless client.

---

## Wireless LAN Diagnostic

On the Wireless LAN Diagnostic screen, you can check signal strength and quality.

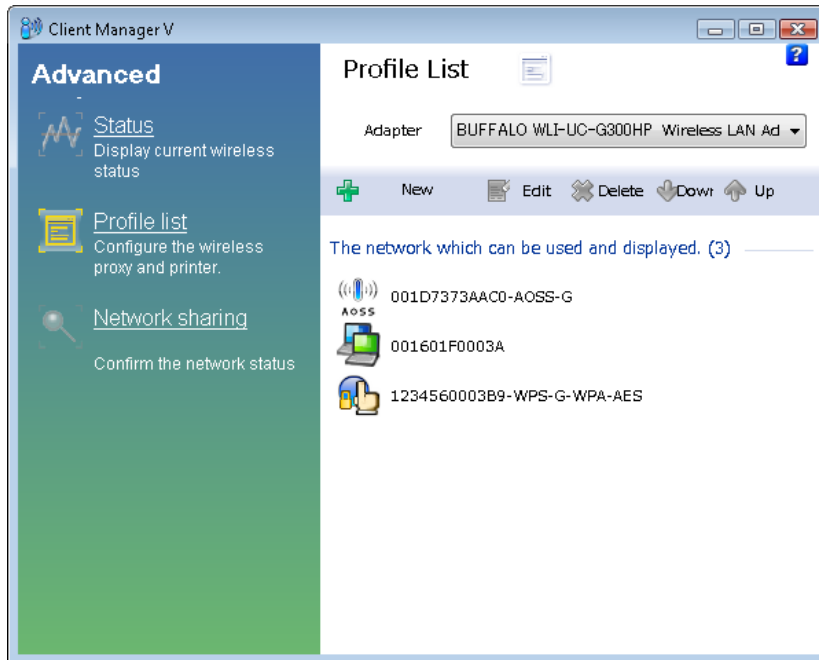


Parameter	Meaning
Adapter	Displays the name of the wireless client currently in use.
Connection status	<p>Displays signal strength (dBm), link rate (Mbps), and signal quality (%) in 1 minute intervals.</p> <p>There are the following restrictions.</p> <ul style="list-style-type: none"> <li>Some items may not be displayed depending on your wireless device.</li> <li>Signal strength and quality displays may vary depending on wireless devices.</li> </ul> <p>These graphs should not be used to compare different wireless devices. Use this information to check wireless status for the same wireless device.</p>
Usage of each channel	<p>The 11b/11g displays usage of each channel on 2.4 GHz.</p> <p>This unit does not display 11a usage (does not support 5 GHz).</p> <p>The color expresses the signal strength of an access point. Closer to red means stronger signal, and closer to blue means weaker signal.</p>



## Profile List

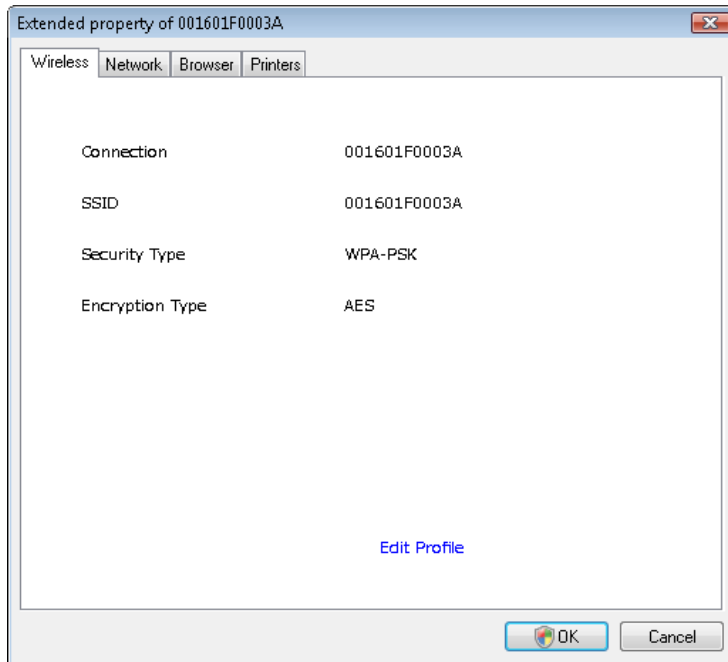
Create a new profile or edit an existing profile.



Parameter	Meaning
Adapter	Displays the name of the wireless client which is currently used.
New	Create a new profile. Click this to display the Automatic Secure Setup and Advanced Setup screen (page 33).
Edit	Edit the selected profile. Click this to display the Extended properties (Wireless) screen (page 42).
Delete	Delete the selected profile.
Down	Lower the priority of the selected profile.
Up	Raise the priority of the selected profile.

## Wireless Properties

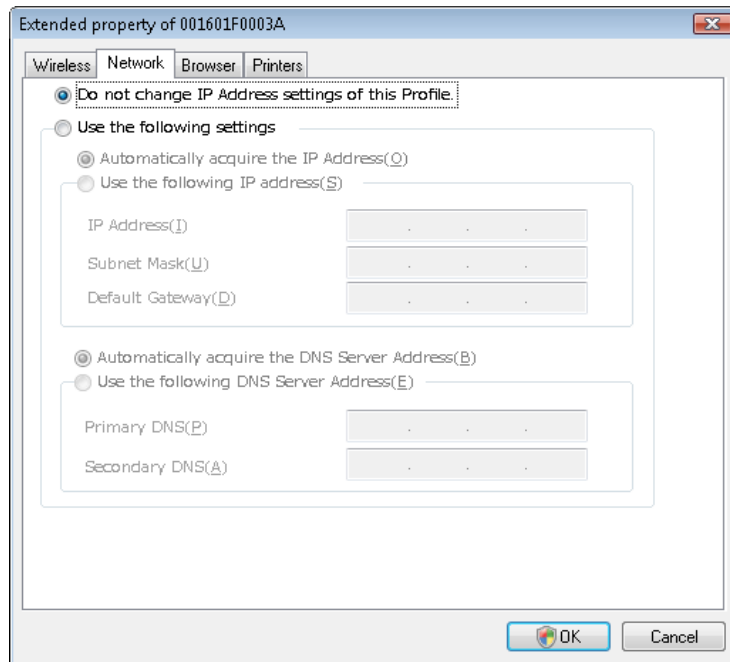
Current wireless settings.



Parameter	Meaning
Connection	Displays the current profile name.
SSID	Displays the SSID of the current connection.
Security Type	Displays the security type you are using for the current connection.
Encryption Type	Displays the encryption type you are using for the current connection.
Edit Profile	Click this to edit the wireless settings.

## Network Properties

By default, your client's IP address is set automatically by DHCP. You may configure it manually from this screen.




---

### Parameter

### Meaning

Do not change IP Address settings of this Profile

Select to keep your current TCP/IP network setting without any changes. This is the recommended setting.

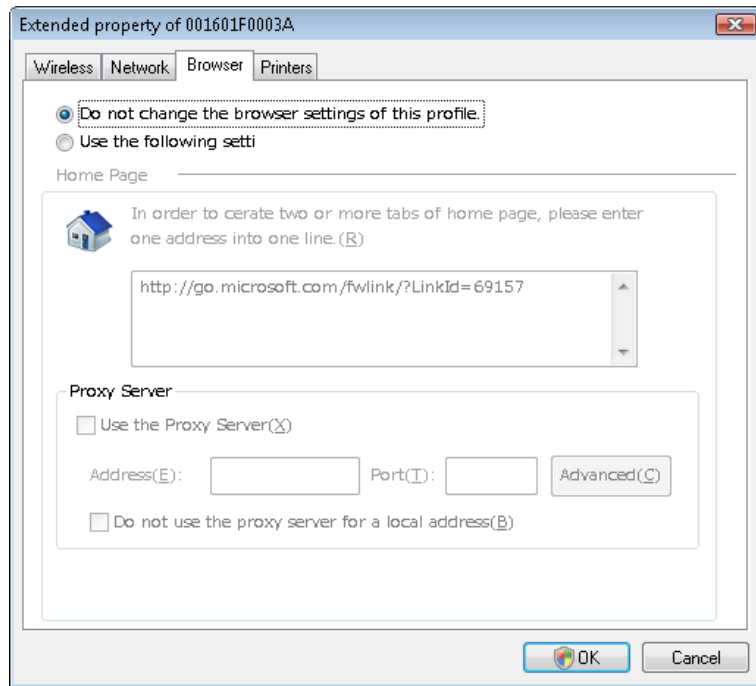
Use the following settings

Select this option to change your TCP/IP network settings. For expert users only.

---

## Browser Properties

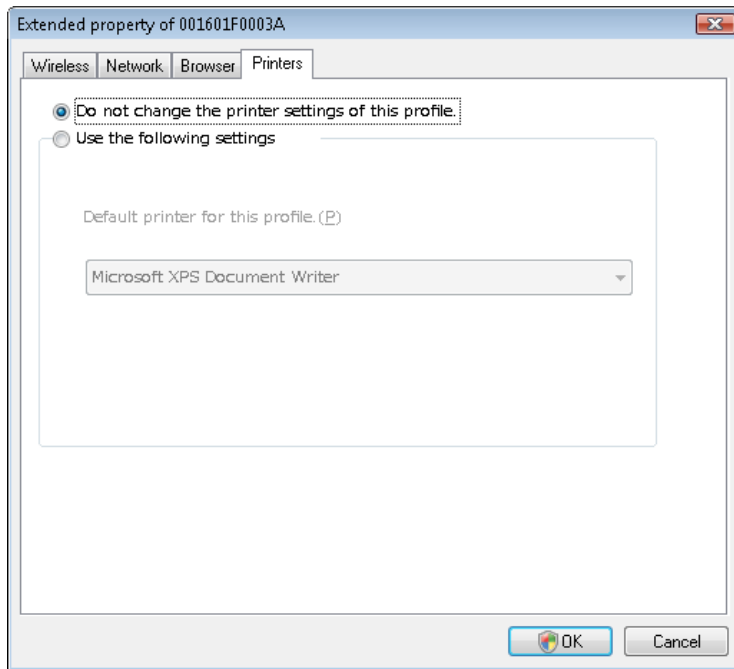
Configure Internet Explorer settings for wireless connections.



Parameter	Meaning
Do not change the browser settings of this Profile	Select to keep the current Internet Explorer settings.
Use the following settings	Select this option to configure the Internet Explorer Home Page and Proxy Server settings while connected wirelessly.

## Printer Properties

Configure the printer used while connected to an access point wirelessly.



---

Parameter	Meaning
-----------	---------

---

Do not change the printer settings of this Profile	Select to keep your current printer settings.
--	---

Use the following settings	Select to use a different default printer while connected wirelessly.
----------------------------	---

---

## Using Client Manager 3 with Windows XP / 2000

---

- When you install Client Manager, it will be added to your Startup folder and will automatically start with Windows. To launch Client Manager manually, click [Start] > [All Programs] > [BUFFALO] > [AirStation Utility] > [ClientManager 3] .
- Right click on the Client Manager icon in the system tray and click [Exit] to close Client Manager. The Client Manager icon will change appearance according to its connection status:



: No wireless client installed



: Not connected to an access point



: Transmitting to an access point with TKIP/AES encryption



: Transmitting to an access point with WEP, or not encrypted



: Transmitting in ad-hoc mode (not supported with this wireless client)



: Authenticating

## Status

The Status screen displays the current connection status.



Parameter	Meaning
Profile	Current connection profile name.
SSID	SSID of the currently connected access point.
Adapter Name	Name ame of the wireless client currently in use.
Network Type	Current network mode.
Transmission Speed	Current transmission speed.
Channel	Current wireless channel.
Security	Displays whether security is currently enabled or not.
IP Address	The IP address assigned to this unit.

---

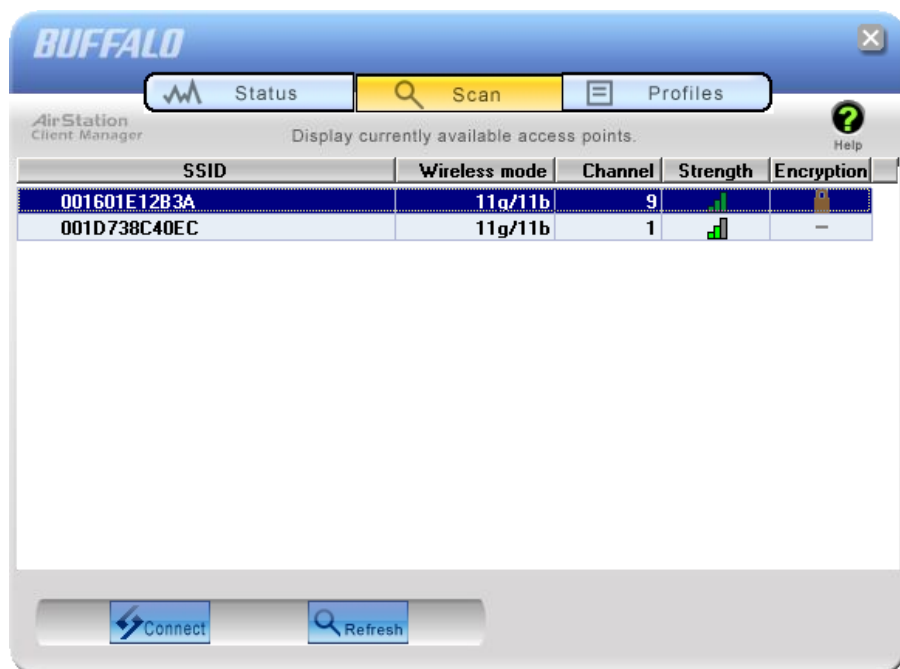
<b>Parameter</b>	<b>Meaning</b>
MAC Address	MAC address of this unit.
Duration	Elapsed duration of the current wireless connection.
Signal Strength	Current signal strength.
Reconnect	Click to reconnect the most recent connection.

---



## Scan

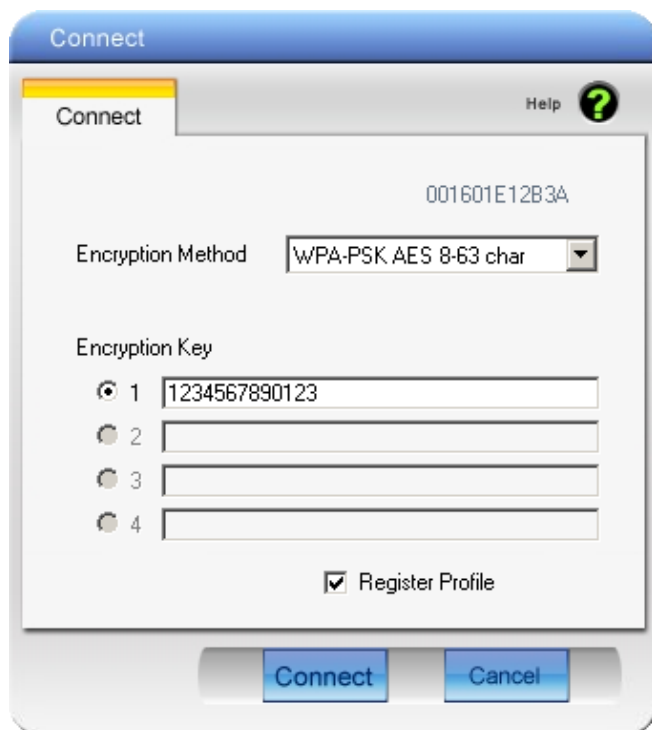
Scan and display nearby access points.



Parameter	Meaning
SSID	SSID of access point.
Wireless mode	Wireless type (such as 11a and 11g) of the access point.
Channel	Wireless channel of the access point.
Strength	Reception strength of each access point.
Encryption	Displays if security is used by the access point.
Connect	Click this to display the Connect screen (page 50).
Refresh	Click here to search for available access points again.

## Connect

Configure connection to an access point.



Parameter	Meaning
Encryption Method	Type of encryption used by the access point.
Encryption Key	Enter the access point's encryption key (passphrase).
Register Profile	Check to register this connection as a profile.