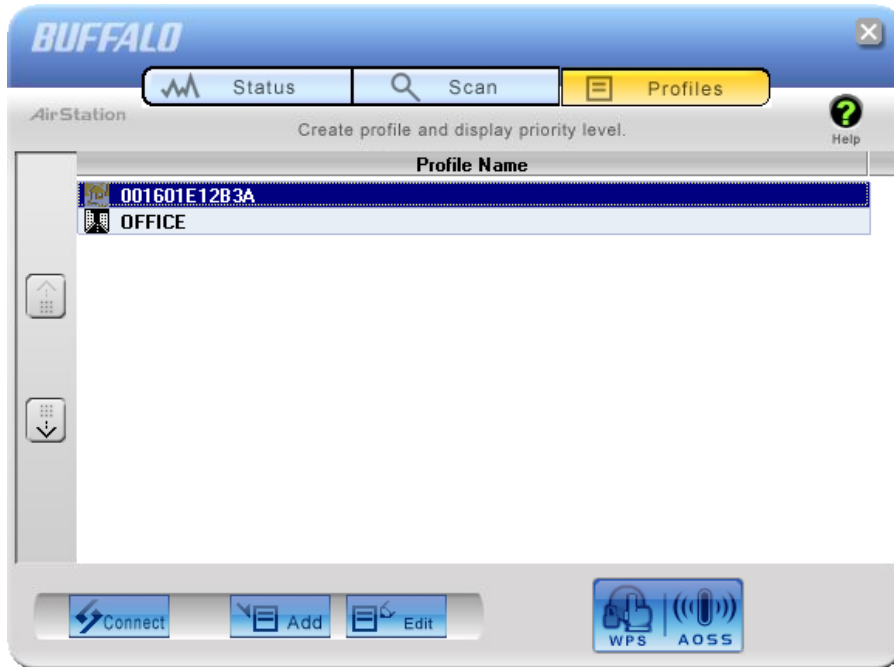


Profiles

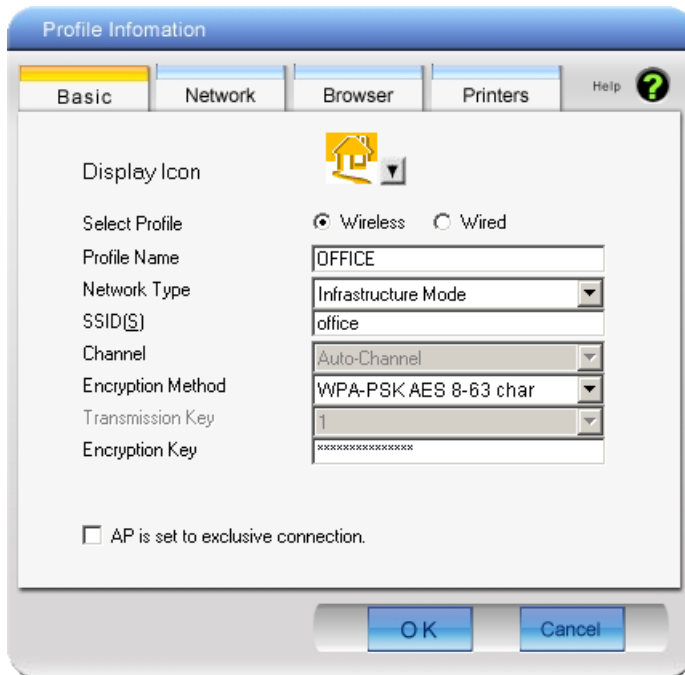
Connect to an access point or edit a profile.



Parameter	Meaning
Connect	Selecting a profile and clicking this button will connect to an access point using a stored profile.
Add	Click this to add a new profile. It will display the Profiles Information screen (page 52).
Edit	Click this to edit or delete information in a profile.
WPS AOSS	Click this button to have AOSS/WPS (PBC) automatically set security. After connection, a profile based on these settings will be created.
802.1x Profiles	This button is displayed when Client Manager is operating in Business Mode. Click to configure 802.1x authentication.

Profile Information (Basic)

Configure your profile settings.

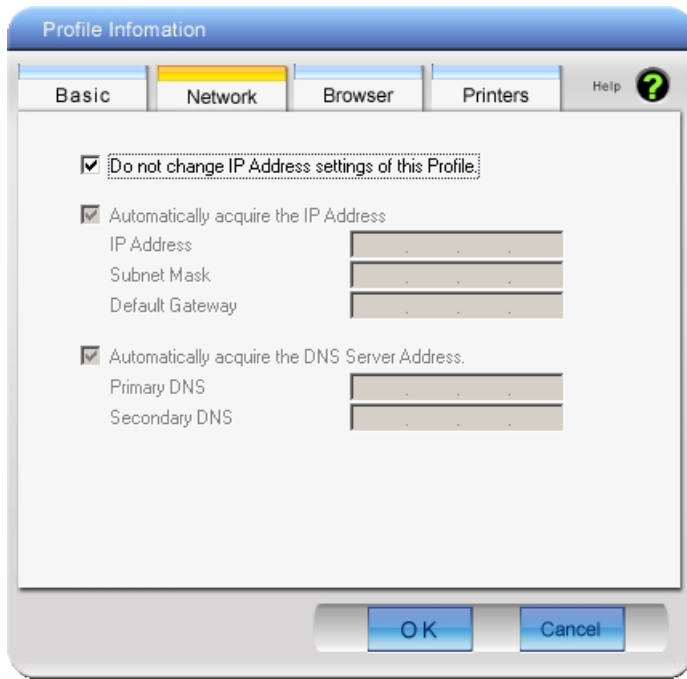


Parameter	Meaning
Display Icon	Select an icon to display on the profile from the list.
Select Profile	Connection may be wireless or wired (Ethernet). For use with the AirStation, select Wireless.
Profile Name	Enter a name for the profile.
Network Type	Select infrastructure mode to connect to an access point (recommended), or ad-hoc mode to connect directly to another wireless client.
SSID	Select the SSID of the wireless access point that the profile will connect to.
Channel	Choose the wireless channel. In Infrastructure Mode, the channel is automatically configured.

Parameter	Meaning
Encryption Method	Select the encryption method used by the wireless access point.
Transmission Key	If WEP is used for the Encryption Method, 4 passphrases may be entered. Use of the first (at least) is recommended.
Encryption Key	Enter the encryption key (passphrase) for the access point.
AP is set to exclusive connection	Check if the access point's SSID is not broadcast.

Profile Information (Network)

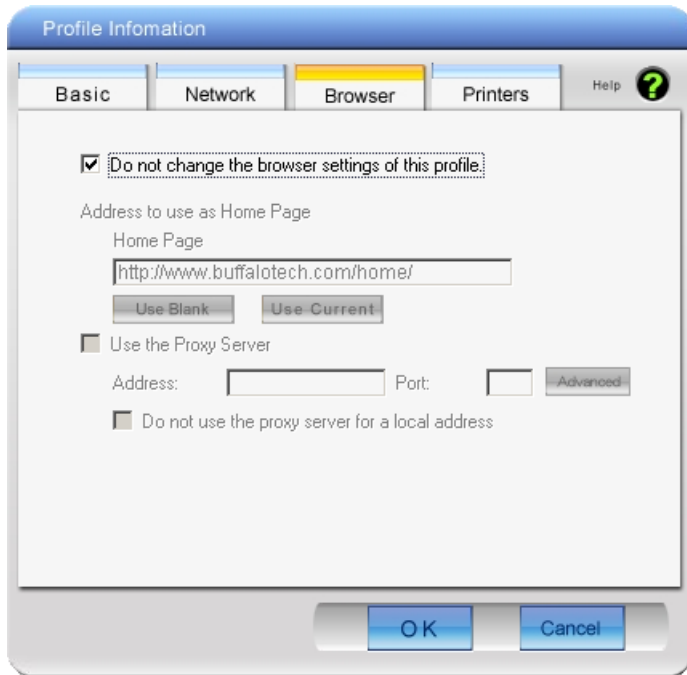
The profile's IP address and subnet mask may be manually assigned.



Parameter	Meaning
Do not change IP Address settings of this Profile	Check to keep using current TCP/IP network settings.
Automatically acquire the IP Address	Check to automatically acquire the IP address from a DHCP server when connecting wirelessly.
Automatically acquire the DNS Server Address	Check to automatically acquire the DNS server address from a DHCP server when connecting wirelessly.

Profile Information (Browser)

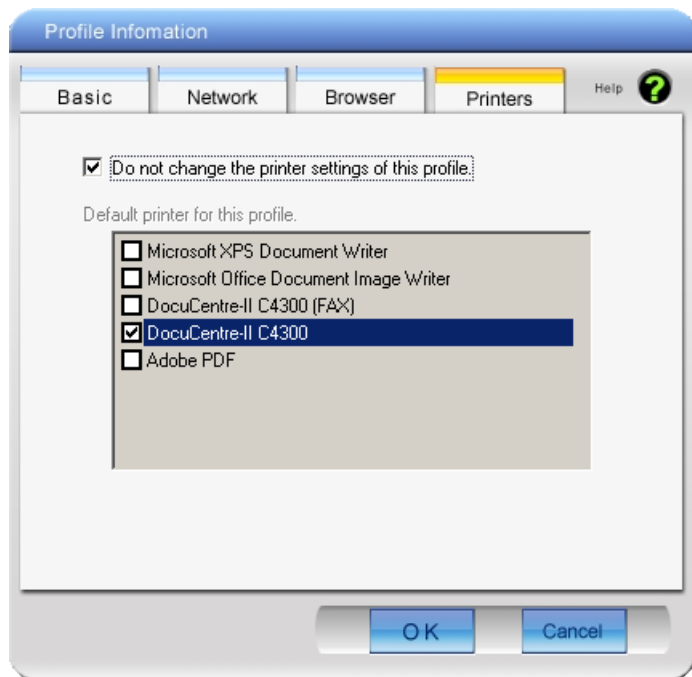
Configure your Internet Explorer settings when connecting wirelessly.



Parameter	Meaning
Do not change the browser settings of this Profile	Check to use current Internet Explorer settings when connecting wirelessly. Uncheck to use any of the settings below.
Address to use as Home Page	To use a different home page in Internet Explorer when connecting wirelessly, enter it here.
Use the Proxy Server	To use a proxy server for Internet Explorer when connecting wirelessly, enter its IP address and a port number and check the box.
Do not use the proxy server for a local address	If checked, the proxy server will not be used for local addresses.

Profile Information (Printers)

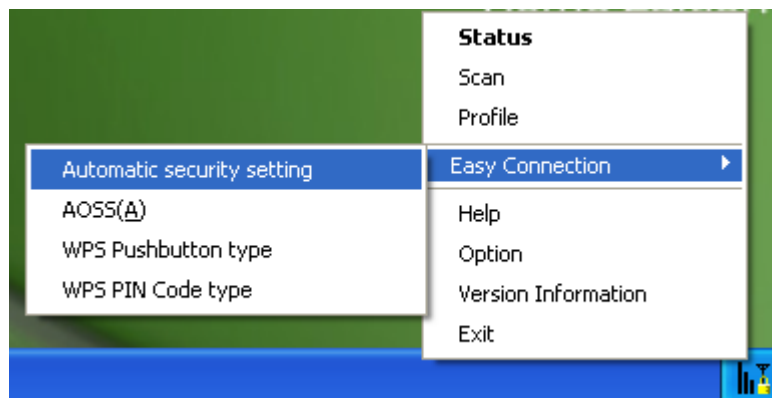
Configure the printer that your computer uses when connected wirelessly.



Parameter	Meaning
Do not change the printer settings of this Profile	Select this option to use a different printer when connecting wirelessly.

System Tray Menu

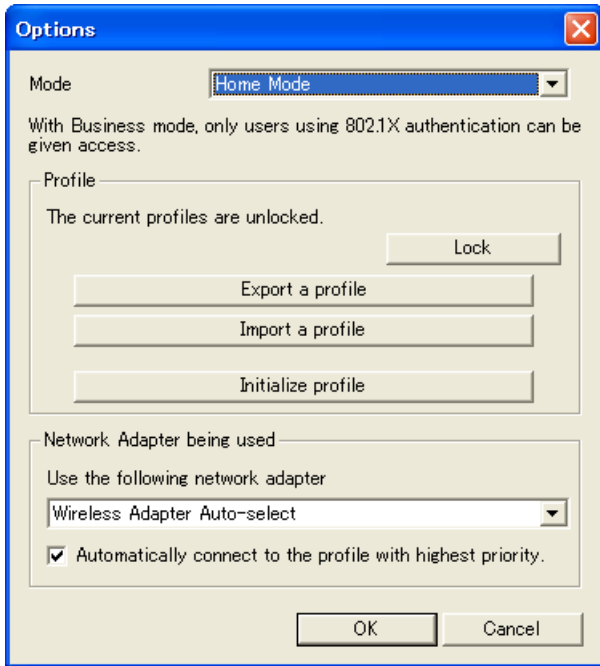
Right-click on the Client Manager icon in the system tray to display the following choices.



Parameter	Meaning
Status	Displays the Status screen (page 47).
Scan	Displays the Scan screen (page 49).
Profile	Displays the Profiles screen (page 51).
Easy Connection	Runs Automatic Secure Setup, using one of the following connection methods: AOSS, WPS(PBC), or WPS(PIN).
Help	Displays Client Manager Help.
Option	Displays the Options menu screen (page 58).
Version Information	Displays Client Manager version information.
Exit	Exits Client Manager.

Option Menu

Configure Client Manager options.



Parameter	Meaning
Mode	Switch between Client Manager’s operating modes. If you select “ <i>Business Mode</i> ”, the button to configure 802.1x authentication appears on the Profiles screen (Page 51). “ <i>Home Mode</i> ” is recommended.
Lock	If you click this, you will not be able to add new profiles or edit existing profiles. To lock or unlock, enter the password (8 - 63 characters).
Export a profile	Click this to save the currently registered profile information. To save profile information, enter the password (8 - 63 characters).
Import a profile	Click this to import a saved profile into Client Manager. You’ll need to enter the password for the profile to continue.

Parameter	Meaning
Initialize profile	Click this to initialize profile information. Before initializing profile information, unlock the unit.
Use the following network adapter	Select a network adaptor to use in Client Manager. " <i>Wireless Adapter Auto-select</i> " is recommended for most users.
Automatically connect to the profile with highest priority	If checked, it will attempt to connect to the profile with highest priority as assigned on the Profile screen (page 51). Checked is recommended for most users.

Chapter 5 - Trouble Shooting

The Computer does not recognize the WLI-UC-G300HP Wireless Adapter.

- Make sure this unit is connected to a USB port on your computer.
- If your computer has multiple USB ports, connect to a different USB port.
- Refer to page 7 "Install Wireless Drivers", and reinstall drivers for this unit.

Cannot connect to the network wirelessly.

- Refer to chapter 3 to connect this unit to an access point wirelessly.
- Configure the same SSID, encryption method, and encryption key for each wireless device. These settings must match those of your wireless access point.
- move your wireless devices closer to the access point.
- Restart your access point.

You forgot the AP's SSID, Encryption KEY, or Password.

Try to connect wirelessly with AOSS or WPS (PBC) if your access point supports either of them (chapter 3, page 15).

Ask your network administrator for SSID and encryption settings if the access point does not support AOSS/WPS (PBC).

The link speed is slower than 300 Mbps (Maximum link speed is only 144Mbps).

The default setting for 300 Mbps mode on the AirStation is "off". Refer to "300 Mbps Mode settings" on page 64 to turn on 300 Mbps mode.

Other Tips

Issue:

When using the Windows wireless connection manager, I cannot connect to my wireless router. I receive a "Cannot configure wireless network" error message when scanning for available wireless networks.

Answer:

Another wireless client software may be installed on your computer that is taking control of the wireless client adapter away from the Windows connection manager. Either switch to the other software or use Add/Remove Programs to remove the conflicting client software. After rebooting, the Windows connection manager should be able to connect to the available wireless networks.

Issue:

When I attempt to connect to my wireless router, I receive an error message indicating that security settings on my computer do not match the settings on the router.

Answer:

Manually enter the correct security key and encryption type into the Windows connection manager.

To enter the security key in Windows XP:

Go to the View Available Wireless Networks and select change Advanced Settings. Click on the Wireless Networks tab. There will be a list of networks to which you have previously connected. Highlight the network name (SSID) of the wireless router and select Properties. Enter the correct encryption key and select correct the encryption type as configured on the wireless router.

Go to the Connect to Network, right-click on the name of the network and click Properties. Highlight the name of your network and go to Properties. Enter the correct encryption key and select correct the encryption type as configured on the wireless router.

Issue:

What can I do if my wireless connection drops randomly or seems slow?

Answer:

There are many environmental factors that may affect this behavior. First, ensure the issue is not range related by locating the wireless router and the client in closer proximity and check whether the connection drops continue.

In some cases, interference from other wireless networks or sources such as 2.4 GHz wireless phones may impact performance. To work around this scenario, change the wireless channel used by your wireless router.

Log in to the wireless router with your browser. Click on the [Wireless Configuration]. If an Auto-Channel option is available, attempt to use this option to remedy the problem. If Auto-Channel is unavailable, manually select an alternate channel.

Issue:

Though I am able to successfully make a connection with my wireless router, I am unable to access the Internet with my web browser.

Answer:

First, power off the Cable or DSL modem, the wireless router, and then your computer. Pressing the power button or simply unplugging the devices can power off the modem and wireless router devices. Then after verifying that the modem is connected to the wireless router with a cable to the WAN port, power on the modem and wait two minutes. Turn on the wireless router and then the computer. Verify whether an Internet connection is available.

If, after these steps, an Internet connection is still unavailable, power off the Cable or DSL modem and computer again and directly connect your computer to the Cable or DSL modem with a cable between the computer and the port on the modem. Power on the modem and wait two minutes. Power on the computer and again check for an Internet connection.

If an Internet connection is not available with a direct connection to the computer, please call the Internet Service Provider who installed the modem.

If an Internet connection is available with a direct connection to the computer, please call our customer support line.

Issue:

Where can I download the latest drivers, firmware and instructions for my Buffalo wireless products?

Answer:

The latest drivers and firmware with installation instructions are available online at www.buffalotech.com

Appendix

300 Mbps Mode settings

By default, the AirStation's 300 Mbps mode is disabled. Use the following procedure to enable it if desired.

1. Click [Start] > [All Programs] > [BUFFALO] > [AirStation Utility] > [AirStation 300Mbps Mode Setting] and launch the utility software.
If you are using Windows 7 or Vista and see the message "A program needs your permission to continue", click [Continue].
2. When the message "Now start the step wizard of 300Mbps Mode" is displayed, click [Next].
3. Click [Next].
4. When the message "Select of wireless adapter" appears, select this unit and click [Next].
5. Select "Use 300Mbps Mode (40MHz)", and click [Next].
6. When the message "Setting of wireless adapter is complete" is displayed, click [Finish the setup].

If you still cannot establish a 300 Mbps connection, check the settings for your access point.

Specifications

Wireless LAN Interface	
Standard Compliance	IEEE802.11b / IEEE802.11g / IEEE802.11n
Transmission Method	Direct Sequence Spread Spectrum (DSSS), OFDM, MIMO
Frequency Range	2,412 - 2,462 MHz (Channels 1 - 11)
Transmission Rate	802.11b/g: 54, 48, 36, 24, 18, 12, 9, 6, 11, 5.5, 2, 1 Mbps 802.11n: 20 MHz BW (Long GI) 130, 117, 104, 78, 52, 39, 26, 13 Mbps (2 stream) 65, 58.5, 52, 39, 26, 19.5, 13, 6.5 Mbps (1 stream) (Short GI) 144.4, 130, 115.5, 86.7, 57.8, 43.3, 28.9, 14.4 Mbps (2 stream) 65, 72.2, 57.8, 43.3, 28.9, 21.7, 14.4, 6.5 Mbps (1 stream) 40 MHz BW (Long GI) 270, 243, 216, 162, 108, 81, 54, 27 Mbps (2 stream) 135, 121.5, 108, 81, 54, 40.5, 27, 13.5 Mbps (1 stream) (Short GI) 300, 270, 240, 180, 120, 90, 60, 30 Mbps (2 stream) 150, 135, 120, 90, 60, 45, 30, 15 Mbps (1 stream)
Access Mode	Infrastructure Mode
Security	WPA2 (TKIP/AES), WPA-PSK (TKIP/AES), 128/64bit WEP
Other	
Power Supply	5.0 V Bus powered
Power Consumption	2500 mW (Max)
Dimensions	26 mm x 15 mm x 100 mm (1.0 x 0.6 x 9.91 cm.)
Weight	30 g (31.18 g.)
Operating Environment	0-40 C (32-104°F) , 20-80 % (non-condensing)


Removing the device from the computer

Windows Vista/XP

If you use Windows 7 / Vista / XP, just unplug it.

Windows 2000

If you use Windows 2000, follow the procedure described below.

1. Click the icon () displayed in the system tray.
2. Click [Safely remove BUFFALO WLI-UC-G300HP Wireless LAN Adapter].
3. Click [OK].
4. Unplug this unit.

Uninstalling the Software

To uninstall the software, follow the procedure described below.

1. Insert AirNavigator CD.
When you insert CD, AirNavigator Setup Wizard will launch automatically.
If AirNavigator Setup Wizard is not displayed, double click [My Computer] icon > CD-ROM drive icon > [AirNavi.exe].
2. Click [Options].
3. Click [Uninstall software].
4. Follow the instructions on the screen to delete the Utility software.

Uninstalling the Drivers

To remove the AirStation wireless client drivers, follow the procedure described below.

1. Insert AirNavigator CD.
When you insert CD, AirNavigator Setup Wizard will launch automatically.
If AirNavigator Setup Wizard is not displayed, double click [My Computer] icon > CD-ROM drive icon > [AirNavi.exe].
2. Click [Options].
3. Click [Remove Drivers].
4. Follow the instructions on the screen to remove drivers.

TCP/IP Settings in Windows

Windows 7

To configure TCP/IP in Windows 7, follow the procedure below.

- 1** Click [Start] > [Control Panel] > [Network and Internet].
- 2** Double click [Network and Sharing Center].
- 3** Click [Change Adapter Settings] on the left side menu.
- 4** Right click on [Local Area Connection], then click [Properties].
- 5** If the message “Windows needs your permission to continue” appears, click [Continue].
- 6** Select [Internet Protocol Version 4 (TCP/IPv4)] then click [Properties].
- 7** To have DHCP set your IP address settings automatically, check [Obtain an IP address automatically] and [Obtain DNS server address automatically].

To set your IP address settings manually, enter values for each settings. Example:

If the router’s IP address is	192.168.11.1,
IP address	192.168.11.80
Subnet mask	255.255.255.0
Default gateway	192.168.11.1
Preferred DNS server	192.168.11.1
Alternate DNS server	blank

- 8** Click [OK].

Windows Vista

To configure TCP/IP in Windows Vista, follow the procedure below.

- 1** Click [Start] > [Settings] > [Control Panel].
- 2** Double click [Network and Sharing Center].
- 3** Click [Manage network connections] on the left side menu.
- 4** Right click on [Local Area Connection], then click [Properties].
- 5** When the message [Windows needs your permission to continue], click [Continue].
- 6** Select [Internet Protocol Version 4 (TCP/IPv4)], then click [Properties].
- 7** To have DHCP set your IP address settings automatically, check [Obtain an IP address automatically] and [Obtain DNS server address automatically].

To set your IP address settings manually, enter values for each settings. Example:

If the router's IP address is 192.168.11.1,	
IP address	192.168.11.80
Subnet mask	255.255.255.0
Default gateway	192.168.11.1
Preferred DNS server	192.168.11.1
Alternate DNS server	blank

- 8** Click [Close].

Windows XP

To configure TCP/IP in Windows XP, follow the procedure below.

- 1** Click [Start] > [Settings] > [Control Panel].
- 2** Double click [Network].
- 3** Right click on [Local Area Connection], then click [Properties].
- 4** Select [Internet Protocol (TCP/IP)], then click [Properties].
- 5** To have DHCP set your IP address settings automatically, check [Obtain an IP address automatically] and [Obtain DNS server address automatically].

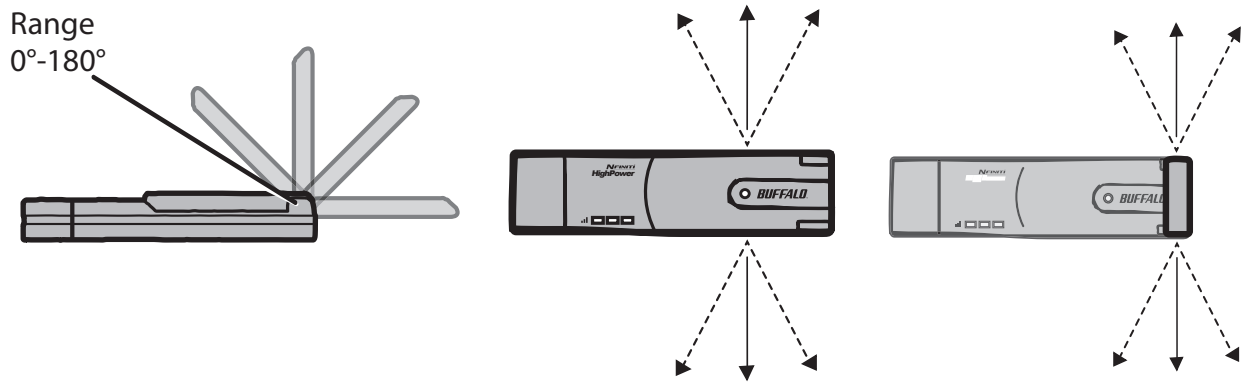
To set your IP address settings manually, enter values for each settings. Example:.

If the router's IP address is 192.168.11.1,	
IP address	192.168.11.80
Subnet mask	255.255.255.0
Default gateway	192.168.11.1
Preferred DNS server	192.168.11.1
Alternate DNS server	blank

- 6** Click [Close].

Antenna Information

The WLI-UC-G300HP has a flexible antenna that may be used in different positions. Adjust the angle for the best signal as needed. Turning the unit so that the wireless AP is directly to one side of the WLI-UC-G300HP will probably give the strongest signal.



FCC / CE / R&TTE Information

Federal Communication Commission Interference Statement

This equipment has been tested and found to comply with the limits for a Class B digital device, pursuant to Part 15 of the FCC Rules. These limits are designed to provide reasonable protection against harmful interference in a residential installation. This equipment generates, uses and can radiate radio frequency energy and, if not installed and used in accordance with the instructions, may cause harmful interference to radio communications. However, there is no guarantee that interference will not occur in a particular installation. If this equipment does cause harmful interference to radio or television reception, which can be determined by turning the equipment off and on, the user is encouraged to try to correct the interference by one of the following measures:

- Reorient or relocate the receiving antenna.
- Increase the separation between the equipment and receiver.
- Connect the equipment into an outlet on a circuit different from that to which the receiver is connected.
- Consult the dealer or an experienced radio/TV technician for help.

FCC Caution:

Any changes or modifications not expressly approved by the party responsible for compliance could void the user's authority to operate this equipment.

This device complies with Part 15 of the FCC Rules. Operation is subject to the following two conditions: (1) This device may not cause harmful interference, and (2) this device must accept any interference received, including interference that may cause undesired operation.

Important Note - FCC Radiation Exposure Statement:

This equipment complies with FCC radiation exposure limits set forth for an uncontrolled environment. End users must follow the specific operating instructions for satisfying RF exposure compliance. To maintain compliance with FCC RF exposure compliance requirements, please follow operation instruction as documented in this manual.

This transmitter must not be co-located or operating in conjunction with any other antenna or transmitter.

SAR compliance has been established in typical laptop computer(s) with USB slot, and product could be used in typical laptop computer with USB slot. Other application like handheld PC or similar device has not been verified and may not compliance with related RF exposure rule and such

use shall be prohibited.

The availability of some specific channels and/or operational frequency bands are country dependent and are firmware programmed at the factory to match the intended destination. The firmware setting is not accessible by the end user.

Industry Canada Statement:

This device complies with RSS-210 of the Industry Canada Rules. Operation is subject to the following two conditions:

- (1) This device may not cause harmful interference, and
- (2) this device must accept any interference received, including interference that may cause undesired operation.

Important Note - Radiation Exposure Statement:

This equipment complies with Canada radiation exposure limits set forth for an uncontrolled environment. End users must follow the specific operating instructions for satisfying RF exposure compliance. To maintain compliance with Canada RF exposure compliance requirements, please follow operation instruction as documented in this manual.

This transmitter must not be co-located or operating in conjunction with any other antenna or transmitter.

Taiwan:

SAR compliance has been established in typical laptop computer(s) with a CardBus slot, and product could be used in typical laptop computer with a CardBus slot. Other application like handheld PC or similar device has not been verified, may not comply with related RF exposure rules, and such use shall be prohibited.

Europe - EU Declaration of Conformity:

This device complies with the essential requirements of the R&TTE Directive 1999/5/EC. The following test methods have been applied in order to prove presumption of conformity with the essential requirements of the R&TTE Directive 1999/5/EC:

EN60950-1: (2006)

Safety of Information Technology Equipment

EN62311 : (2008)

Assessment of electronic and electrical equipment related to human exposure restrictions for electromagnetic fields (0 Hz – 300 GHz)

EN 300 328 V1.7.1: (2006-10)

Electromagnetic compatibility and Radio spectrum Matters (ERM); Wideband Transmission systems; Data transmission equipment operating in the 2,4 GHz ISM band and using spread spectrum modulation techniques; Harmonized EN covering essential requirements under article 3.2 of the R&TTE Directive

EN 301 489-1 V1.8.1: (2008-04)

Electromagnetic compatibility and Radio Spectrum Matters (ERM); ElectroMagnetic Compatibility (EMC) standard for radio equipment and services; Part 1: Common technical requirements

EN 301 489-17 V2.1.1 (2009-05)

Electromagnetic compatibility and Radio spectrum Matters (ERM); ElectroMagnetic Compatibility (EMC) standard for radio equipment; Part 17: Specific conditions for Broadband Data Transmission Systems

This device is a 2.4 GHz wideband transmission system (transceiver), intended for use in all EU member states and EFTA countries, except in France and Italy where restrictive use applies.

In Italy the end-user should apply for a license at the national spectrum authorities in order to obtain authorization to use the device for setting up outdoor radio links and/or for supplying public access to telecommunications and/or network services.

This device may not be used for setting up outdoor radio links in France and in some areas the RF output power may be limited to 10 mW EIRP in the frequency range of 2454 – 2483.5 MHz. For detailed information the end-user should contact the national spectrum authority in France.

CE 0560 ⚠

Česky [Czech]

Buffalo Technology Inc. tímto prohlašuje, že tento WLI-UC-G300HP / WLI-UC-G300HP-V1 je ve shodě se základními požadavky a dalšími příslušnými ustanoveními směrnice 1999/5/ES.

Dansk [Danish]

Undertegnede Buffalo Technology Inc. erklærer herved, at følgende udstyr WLI-UC-G300HP / WLI-UC-G300HP-V1 overholder de væsentlige krav og øvrige relevante krav i direktiv 1999/5/EF.

Deutsch [German]

Hiermit erklärt Buffalo Technology Inc., dass sich das Gerät WLI-UC-G300HP / WLI-UC-G300HP-V1 in Übereinstimmung mit den grundlegenden Anforderungen und den übrigen einschlägigen Bestimmungen der Richtlinie 1999/5/EG befindet.

Eesti [Estonian]

Käesolevaga kinnitab Buffalo Technology Inc. seadme WLI-UC-G300HP / WLI-UC-G300HP-V1 vastavust direktiivi 1999/5/EÜ põhinõuetele ja nimetatud direktiivist tulenevatele teistele asjakohastele sätetele.

English

Hereby, Buffalo Technology Inc., declares that this WLI-UC-G300HP / WLI-UC-G300HP-V1 is in compliance with the essential requirements and other relevant provisions of Directive 1999/5/EC.

Español [Spanish]

Por medio de la presente Buffalo Technology Inc. declara que el WLI-UC-G300HP / WLI-UC-G300HP-V1 cumple con los requisitos esenciales y cualesquiera otras disposiciones aplicables o exigibles de la Directiva 1999/5/CE.

Ελληνική [Greek]

ΜΕ ΤΗΝ ΠΑΡΟΥΣΑ Buffalo Technology Inc. ΔΗΛΩΝΕΙ ΟΤΙ WLI-UC-G300HP / WLI-UC-G300HP-V1 ΣΥΜΜΟΡΦΩΝΕΤΑΙ ΠΡΟΣ ΤΙΣ ΟΥΣΙΩΔΕΙΣ ΑΠΑΙΤΗΣΕΙΣ ΚΑΙ ΤΙΣ ΛΟΙΠΕΣ ΣΧΕΤΙΚΕΣ ΔΙΑΤΑΞΕΙΣ ΤΗΣ ΟΔΗΓΙΑΣ 1999/5/ΕΚ.

Français [French]

Par la présente WLI-UC-G300HP / WLI-UC-G300HP-V1 déclare que l'appareil [type d'appareil] est conforme aux exigences essentielles et aux autres dispositions pertinentes de la directive 1999/5/CE.

Italiano [Italian]

Con la presente Buffalo Technology Inc. dichiara che questo WLI-UC-G300HP / WLI-UC-G300HP-V1 è conforme ai requisiti essenziali ed alle altre disposizioni pertinenti stabilite dalla direttiva 1999/5/CE.

Latviski [Latvian]

Ar šo Buffalo Technology Inc. deklarē, ka WLI-UC-G300HP / WLI-UC-G300HP-V1 atbilst Direktīvas 1999/5/EK būtiskajām prasībām un citiem ar to saistītajiem noteikumiem.

Lietuvių [Lithuanian]

Šiuo Buffalo Technology Inc. deklaruoja, kad šis WLI-UC-G300HP / WLI-UC-G300HP-V1 atitinka esminius reikalavimus ir kitas 1999/5/EB Direktyvos nuostatas.

Nederlands [Dutch]

Hierbij verklaart Buffalo Technology Inc. dat het toestel WLI-UC-G300HP / WLI-UC-G300HP-V1 in overeenstemming is met de essentiële eisen en de andere relevante bepalingen van richtlijn 1999/5/EG.

Malti [Maltese]

Hawnhekk, Buffalo Technology Inc., jiddikjara li dan WLI-UC-G300HP / WLI-UC-G300HP-V1 jikkonforma mal-ħtiġijiet essenzjali u ma provvedimenti oħrajn rilevanti li hemm fid-Dirrettiva 1999/5/EC.

Magyar [Hungarian]

Alulírott, Buffalo Technology Inc. nyilatkozom, hogy a WLI-UC-G300HP / WLI-UC-G300HP-V1 megfelel a vonatkozó alapvető követelményeknek és az 1999/5/EC irányelv egyéb előírásainak.

Polski [Polish]

Niniejszym Buffalo Technology Inc. oświadcza, że WLI-UC-G300HP / WLI-UC-G300HP-V1 jest zgodny z zasadniczymi wymogami oraz pozostałymi stosownymi postanowieniami Dyrektywy 1999/5/EC.

Português [Portuguese]

Buffalo Technology Inc. declara que este WLI-UC-G300HP / WLI-UC-G300HP-V1 está conforme com os requisitos essenciais e outras disposições da Directiva 1999/5/CE.

Slovensko [Slovenian]

Buffalo Technology Inc. izjavlja, da je ta WLI-UC-G300HP / WLI-UC-G300HP-V1 v skladu z bistvenimi zahtevami in ostalimi relevantnimi določili direktive 1999/5/ES.

Slovensky [Slovak]

Buffalo Technology Inc. týmto vyhlasuje, že WLI-UC-G300HP / WLI-UC-G300HP-V1 spĺňa základné požiadavky a všetky príslušné ustanovenia Smernice 1999/5/ES.

Suomi [Finnish]

Buffalo Technology Inc. vakuuttaa täten että WLI-UC-G300HP / WLI-UC-G300HP-V1 tyyppinen laite on direktiivin 1999/5/EY oleellisten vaatimusten ja sitä koskevien direktiivin muiden ehtojen mukainen.

Svenska [Swedish]

Härmed intygar Buffalo Technology Inc. att denna WLI-UC-G300HP / WLI-UC-G300HP-V1 står i överensstämmelse med de väsentliga egenskapskrav och övriga relevanta bestämmelser som framgår av direktiv 1999/5/EG.

根據 NCC 低功率電波輻射性電機管制辦法：

第十二條：

經型式認證合格之低功率射頻電機，非經許可，公司、商號或使用者均不得擅自變更頻率、加大功率或變更原設計之特性及功能。

第十四條：

低功率射頻電機之使用不得影響飛航安全及干擾合法通信；經發現有干擾現象時，應立即停用，並改善至無干擾時方得繼續使用。前項合法通信，指依電信法規定作業之無線電通信。低功率射頻電機須忍受合法通信或工業、科學及醫療用電波輻射性電機設備之干擾。

이 기기는 가정용으로 전자파적합등록을 한 기기로서 주거지역에서는 물론 모든 지역에서 사용할 수 있습니다 .

해당 무선설비는 전파혼신 가능성이 있으므로 인명안전과 관련된 서비스는 할 수 없음

법에 의해 전방향 전파발사 및 동일한 정보를 동시에 여러 곳으로 송신하는 점 - 대 - 다지 점 서비스에의 사용은 금지되어 있습니다 .

Environmental Information

- The equipment that you have purchased has required the extraction and use of natural resources for its production.
- The equipment may contain hazardous substances that could impact health and the environment.
- In order to avoid the dissemination of those substances in our environment and to diminish the pressure on the natural resources, we encourage you to use the appropriate take-back systems.
- The take-back systems will reuse or recycle most of the materials of your end life equipment in a sound way.
- The crossed-out wheeled bin symbol invites you to use those systems.



- If you need more information on the collection, reuse and recycling systems, please contact your local or regional waste administration.

Warranty Information

Buffalo Technology (Buffalo Inc.) products come with a two-year limited warranty from the date of purchase. Buffalo Technology (Buffalo Inc.) warrants to the original purchaser the product; good operating condition for the warranty period. This warranty does not include non-Buffalo Technology (Buffalo Inc.) installed components. If the Buffalo product malfunctions during the warranty period, Buffalo Technology/(Buffalo Inc.) will, replace the unit, provided the unit has not been subjected to misuse, abuse, or non-Buffalo Technology/(Buffalo Inc.) authorized alteration, modifications or repair.

All expressed and implied warranties for the Buffalo Technology (Buffalo Inc) product line including, but not limited to, the warranties of merchantability and fitness of a particular purpose are limited in duration to the above period.

Under no circumstances shall Buffalo Technology/(Buffalo Inc.) be liable in any way to the user for damages, including any lost profits, lost savings or other incidental or consequential damages arising out of the use of, or inability to use the Buffalo products.

In no event shall Buffalo Technology/(Buffalo Inc.) liability exceed the price paid for the product from direct, indirect, special, incidental, or consequential damages resulting from the use of the product, its accompanying software, or its documentation. Buffalo Technology (Buffalo Inc.) does not offer refunds for any product.

@ 2003-2010 Buffalo Technology (Buffalo, Inc.)

Contact Information (USA / Canada)

Buffalo Technology USA Inc.
11100 Metric Blvd, Suite 750
Austin, TX 78758-4018

GENERAL INQUIRIES

Monday through Friday

8:30am-5:30pm CST

Direct: 512-794-8533 | **Toll-free:** 800-456-9799 | **Fax:** 512-794-8520 |

Email: sales@buffalotech.com

TECHNICAL SUPPORT

North American Technical Support by phone is available 24 hours a day, 7 days a week. (USA and Canada).

Toll-free: (866) 752-6210 | Email: info@buffalotech.com

Contact Information (Europe)

Buffalo Technology UK LTD
176 Buckingham Avenue,
Slough, Berkshire, SL1 4RD
United Kingdom

GENERAL INQUIRIES

Email: sales@buffalo-technology.com

TECHNICAL SUPPORT

Phone (UK only): 08712 50 12 60*

Phone: +353 61 70 80 50

Email: sales@buffalo-technology.com

*Calls cost 8.5p per minute

Technical Support Operating Hours

Monday - Friday (GMT)

9:00 AM - 6:00 PM Monday-Thursday

9:00 AM - 4:30 PM Friday

At Buffalo Technology, we constantly update our software and firmware. For the most recent software, firmware, driver, and technical whitepaper releases available, please visit the Buffalo Technology website: www.buffalotech.com.