

Recommended Installation Procedure:

(for pit lid installation)

1. Using the four machine screws and lock-nuts with the nylon inserts provided, attach CellinK™ to CellinK side of Mounting Bracket. Ensure to mount CellinK as space allows, either normal position or 90° offset.

(See Fig 1 for normal mounting or Fig 2 for 90° offset mounting)

2. Insert Antenna Coax Cable and Antenna Base through pre-drilled hole in Pit Lid.

(See Fig 3)

3. Slide Spacer over Antenna Coax Cable and Antenna Base.

(See Fig 3)

4. Feed Antenna Coax Cable through center hole on Antenna side of Mounting Bracket and, using the two Antenna Mounting screws provided, attach Mounting Bracket to Antenna Base. Ensure that Antenna Mounting Screws are fed into the CENTER holes on Antenna Base. Also, ensure that Mounting Bracket is positioned as to allow for proper clearance between the CellinK and the Pit wall, Meter/RTR, and other pit contents.

(See Fig 3)

5. Connect Antenna Coax Cable to CellinK Coax connector and wrap with Coax Cable Sealing Tape. Ensure to cover all exposed metal of Coax connector and compress tape tightly to provide proper water-proofing.

(See Fig 3)

6. Connect RTR cable to CellinK RTR Cable (Black Connector).

(See Cable Connecting Procedure)

7. Connect Battery cable to CellinK Battery Cable (White Connector).

(See Cable Connecting Procedure)

8. Mount RTR to Meter Body and secure in place with seal screw.

9. Return pit lid to pit. Ensure all pit contents have proper clearance - no equipment should be “forced” into position. Also, ensure no cables are pinched between lid and pit.

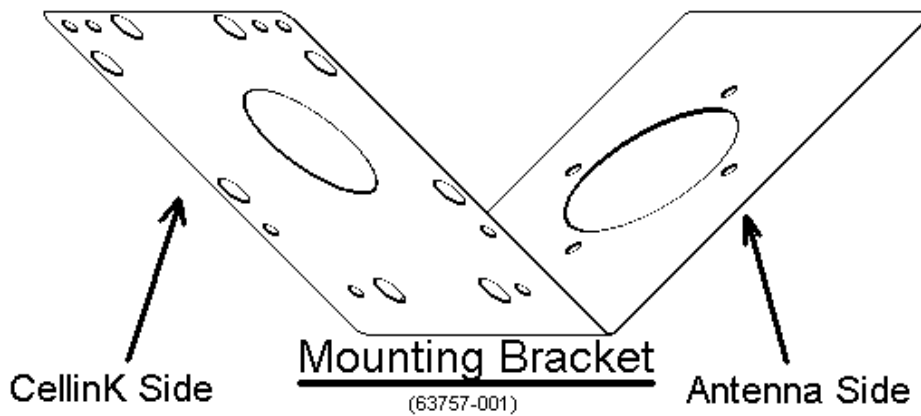
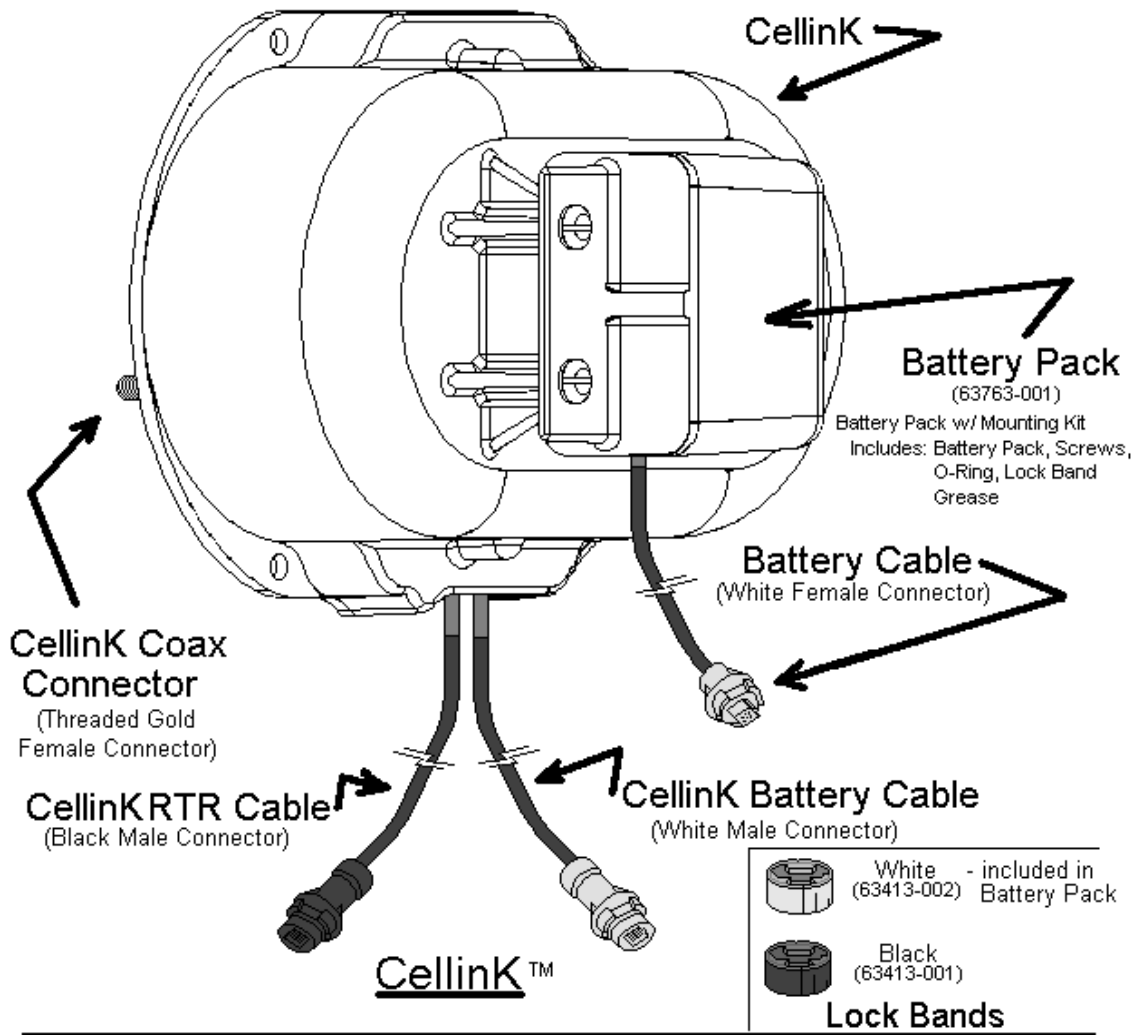
FCC ID: GIF4545

This device complies with Part 15 of the FCC Rules. Operation is subject to the following two conditions: (1) This device may not cause harmful interference, and (2) this device must accept any interference received, including interference that may cause undesired operation

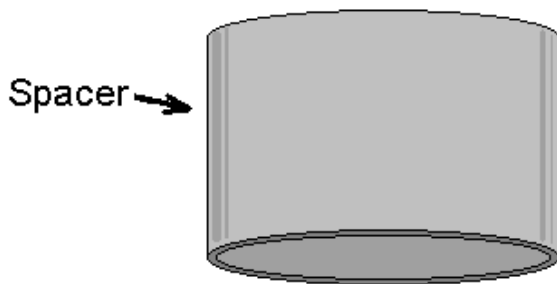
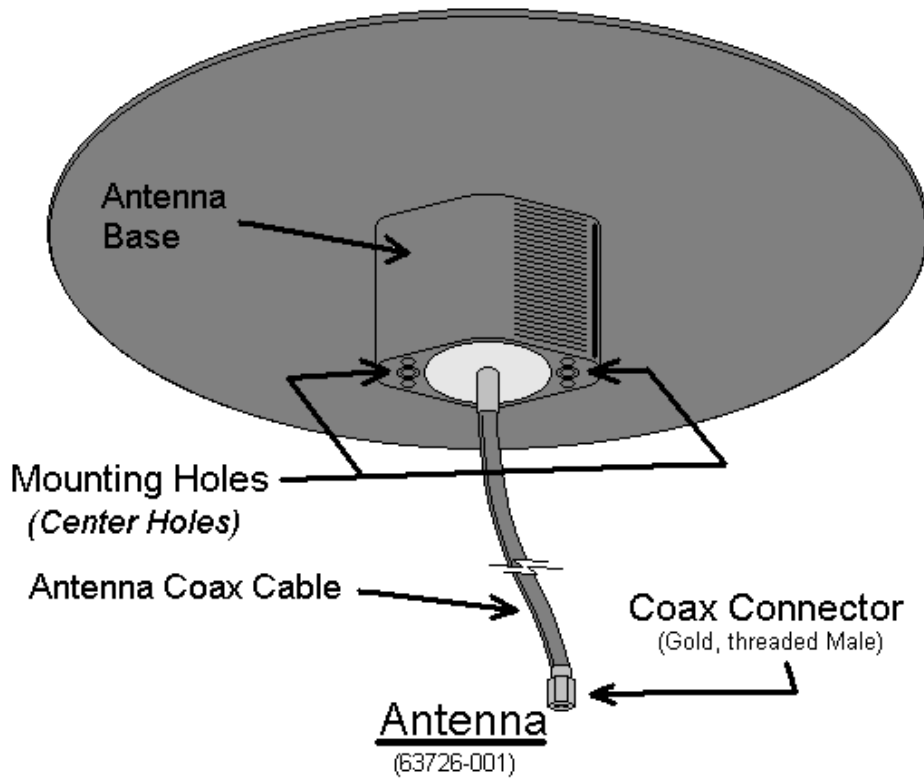
!WARNING!

Any modifications to the unit, unless expressly approved by the party responsible for compliance, could void the user's authority to operate the equipment.

This product is intended to be installed, operated, and used only by properly trained professionals, in accordance with FCC rules and regulations.



PARTS



Mounting Screws (2 x 1")
(2 x 2")

Antenna Mounting Kit
(63762-001)



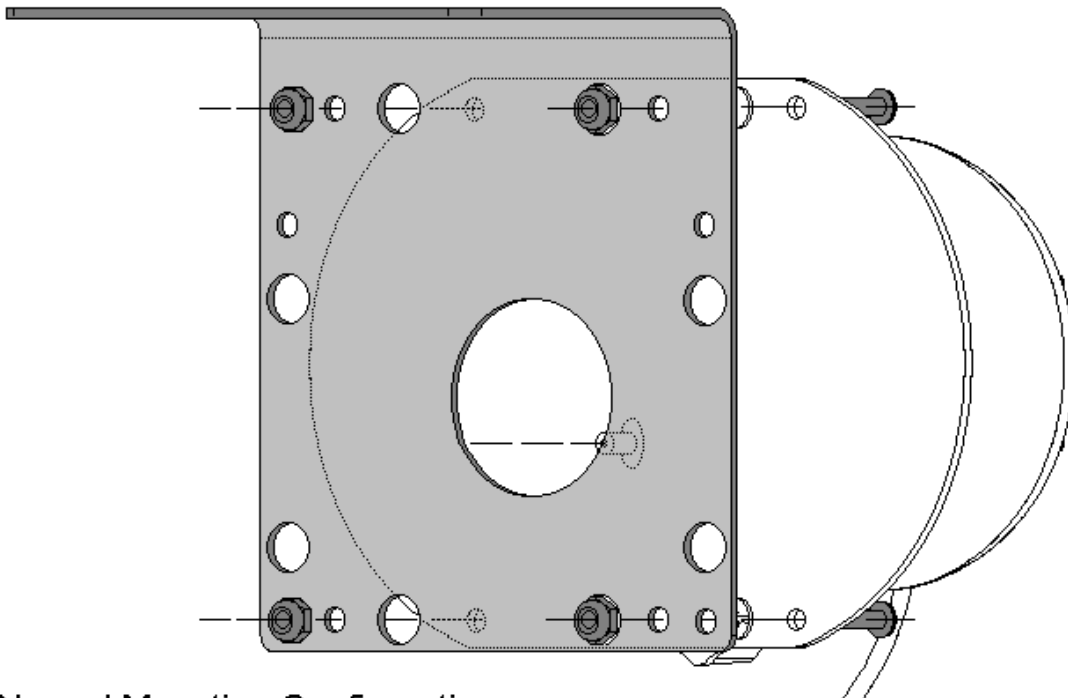
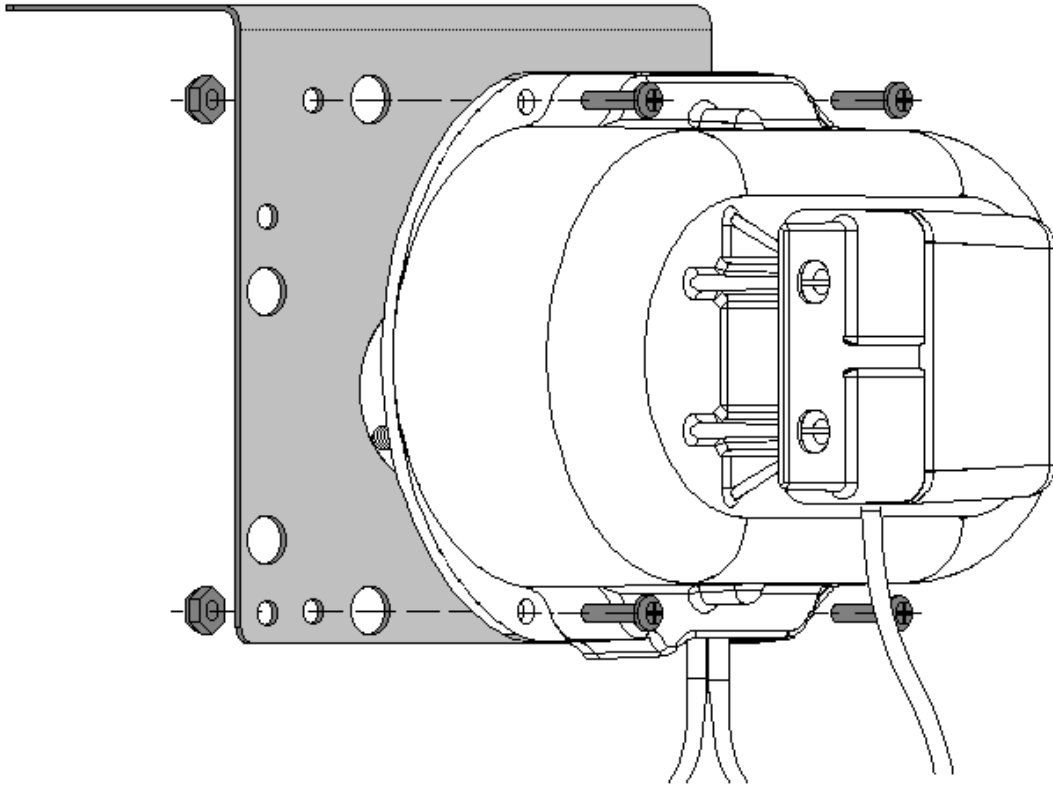
Lock-nuts with Nylon Inserts
(x4)



Mounting Screws (x 4)

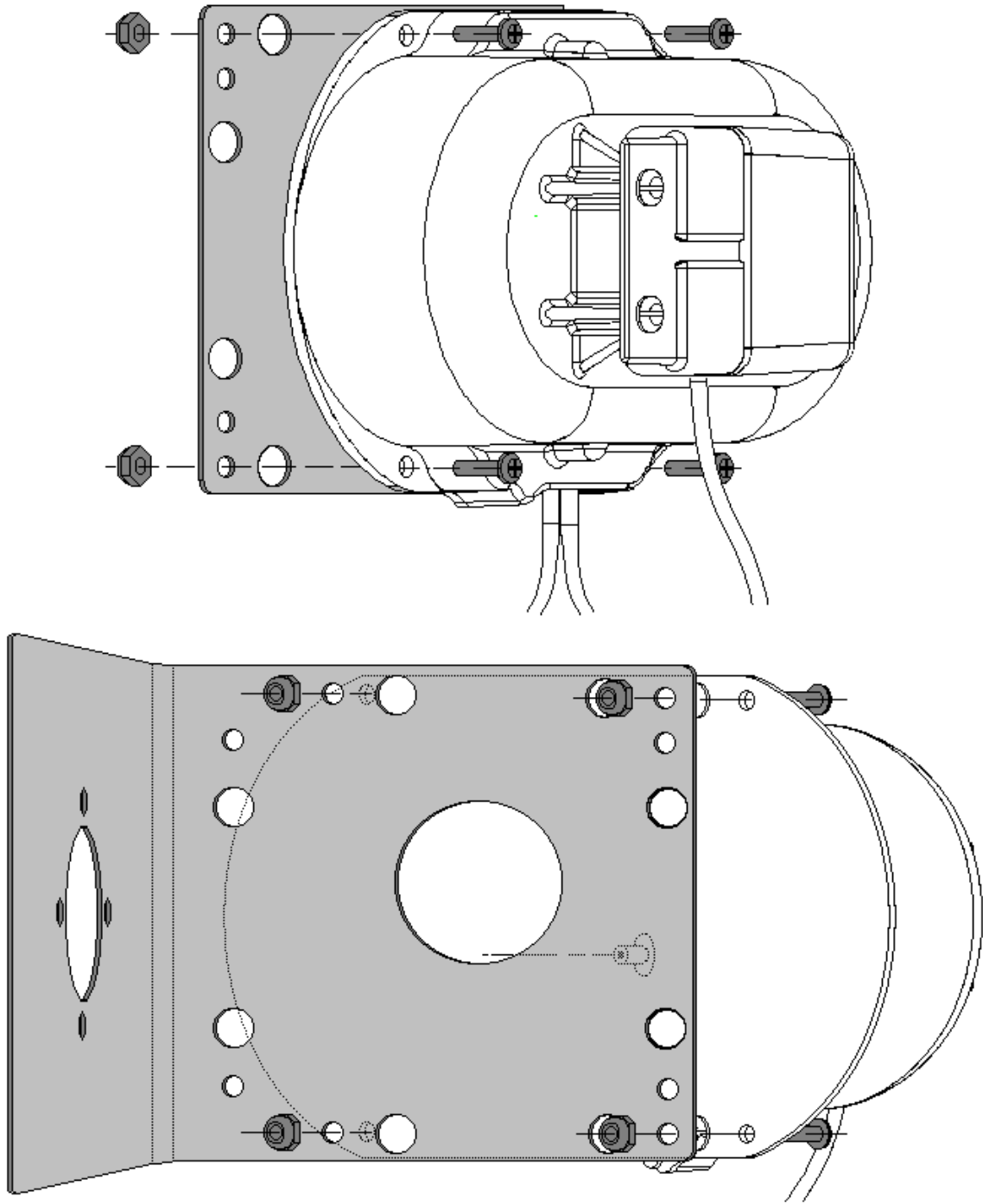
CellinK Mounting Kit
(63765-001)

PARTS

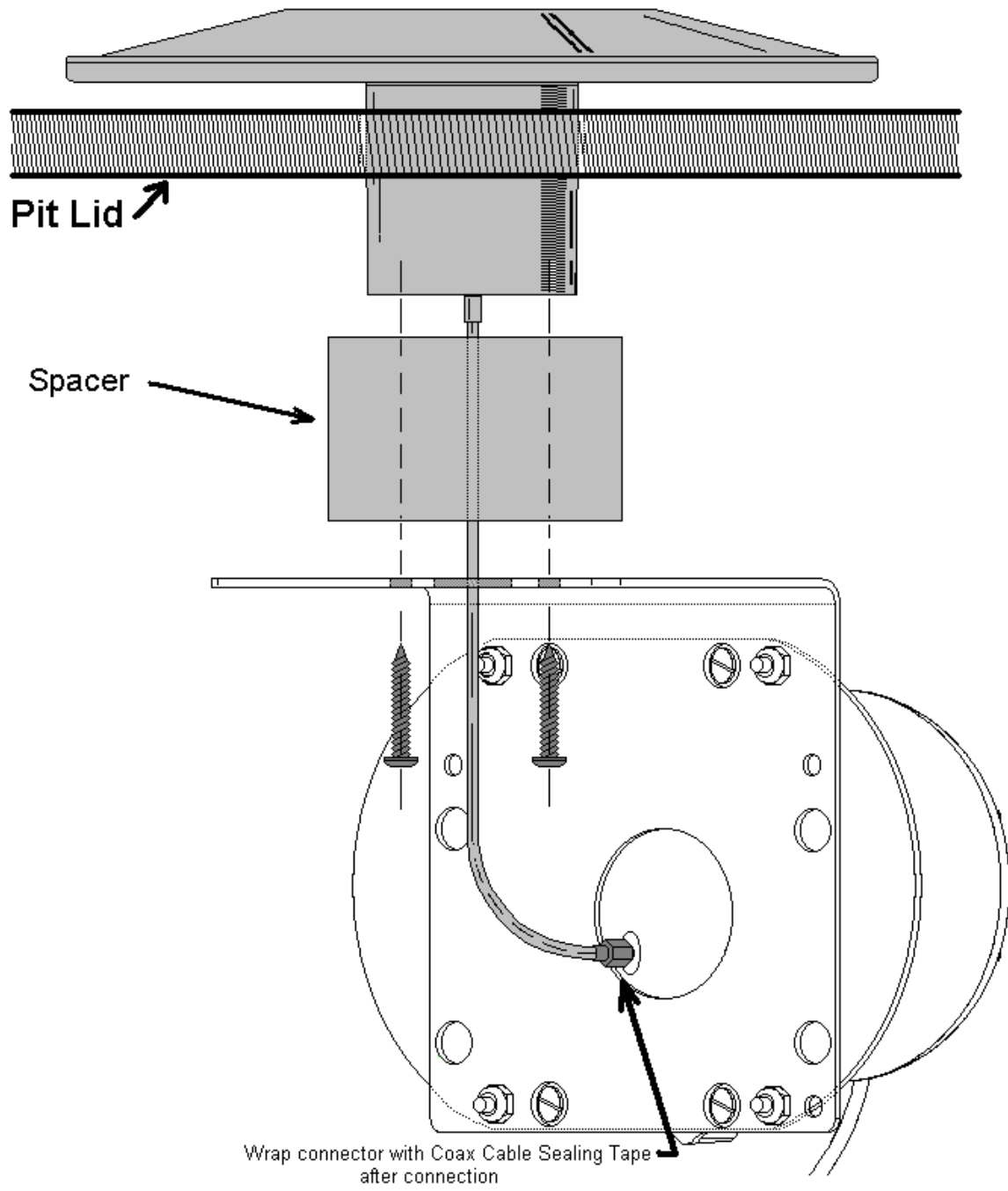


Normal Mounting Configuration

Figure 1



90° Offset Configuration
Figure 2



Antenna Mounting
Figure 3

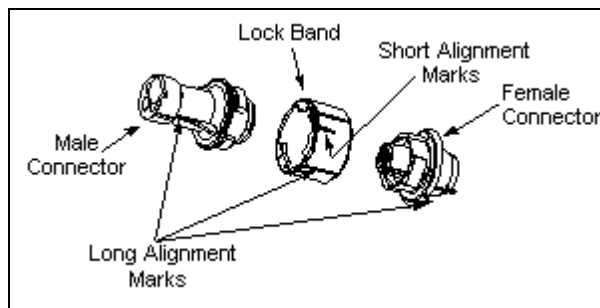
Cable Connector Procedure

Installation Instructions:

The following instructions are to assist you in the connection process if necessary. Keep all parts clean prior to assembly. Any dirt or water within the connector enclosure can cause corrosion of the contacts which will reduce connector life.

When connecting the components, ensure the terminal cavity of the Male Connector contains an ample amount of grease. The connectors should be shipped from the factory with the appropriate quantity, but if the connectors are being replaced or repaired, some volume of grease may have been displaced. In that case, or if the connector was inadvertently shipped without grease, then before connecting first apply grease from the small tube in the kit into the terminal cavity for the male connector. The tube contains the correct quantity of grease to use, so be sure to dispense all of it into the connector. A pliers may be helpful to assist in squeezing out the last quantity of grease.

1. Drop the Lock Band onto the Female Connector with the Short Alignment Mark up and position the band so that the Long Alignment Mark is lined up with the Alignment Mark at the base of the Female Connector.
2. Insert the Male Connector into the female connector, again lining up the Long Alignment Marks on each component. The insertion operation may require significant force to displace the excess grease from the connector cavity.
3. With the connector halves forced together, turn the locking band to align its Short Alignment Mark with the Long Alignment Marks on the connector halves. It may require a pliers to rotate the band to its final position. A clicking sound should be heard when the band achieves its final and correct position.



FCC ID: GIF4545

This device complies with Part 15 of the FCC Rules. Operation is subject to the following two conditions: (1) This device may not cause harmful interference, and (2) this device must accept any interference received, including interference that may cause undesired operation

!WARNING!

Any modifications to the unit, unless expressly approved by the party responsible for compliance, could void the user's authority to operate the equipment.

This product is intended to be installed, operated, and used only by properly trained professionals, in accordance with FCC rules and regulations.