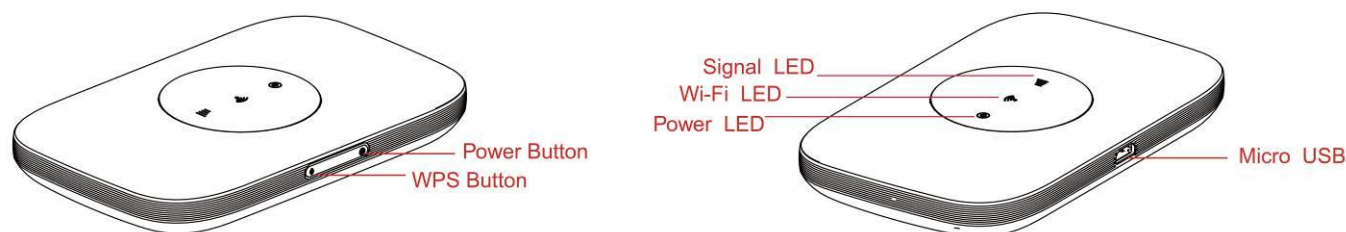


# R700 User Manual

## Interface



Button	Illustrate
Power Button	Long press over 5 seconds to power on and long press to power off
WPS Button	Press to active the WPS
Reset	The Reset button is on the opposite side of the machine. If you forget Administrator password or Wireless network key, you can press the Reset key to restore factory default settings.

## LED Indication

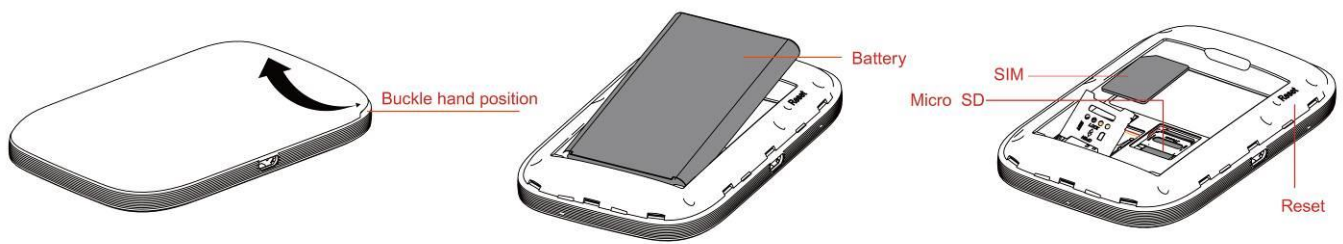
Indicator	Color	Working Status	
Power LED	Amber	Charging	Blink: Turn on-0.5s Turn off-0.5s
	Blue	Battery High(100%-50%) or Charge Completed	
	Green	Battery Middle (50%-10%)	
	Red	Blink: Battery too low nearly shutdown (<10%)	
Purple	Blink: New SMS		
Signal LED	Blue	Solid: Register to LTE(not connect) Blink: Connected to LTE network	Blink: Turn on-0.2s Turn off-0.1s
	Red	Solid: No Service/Device Error	
Wi-Fi LED	Blue	Solid: No Client Blink: Client is activated	
		Blink: WPS is activated	

# Installation

---

Follow the diagram to install the SIM card and SD card

---



Tips: Always switch the device off and disconnect the charger before removing the battery.

1. Remove the back cover and battery;
2. Insert the SIM card and SD card. Ensure that the contact area on the card is facing down and that the beveled corner on the card is facing the beveled corner on the holder.
3. Align the battery contacts with the battery compartment connectors, and insert the battery. Replace the back cover lastly.

# Charge

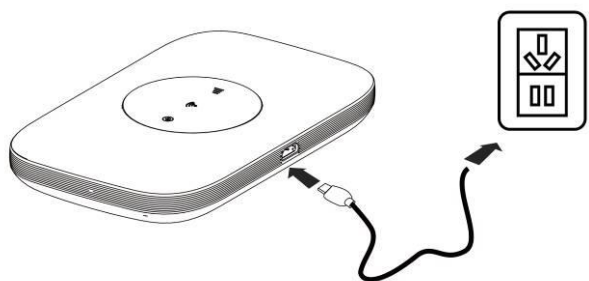
---

Your battery has been partially charged at the factory. If the device indicates a low charge, do the following:

1. Connect the charger to a wall outlet.
2. Connect the USB charger plug to your device' s USB port.
3. When the device indicates a full charge, disconnect the charger from the device, then from the wall outlet.

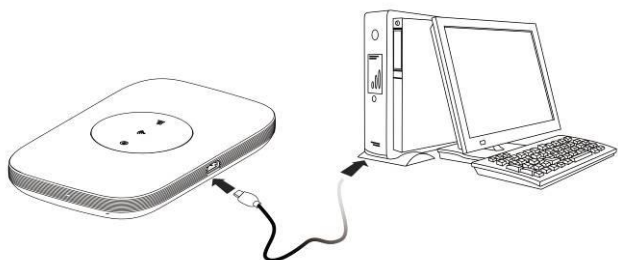
## One : Using charge adapter

---



## Two : Using USB port

---



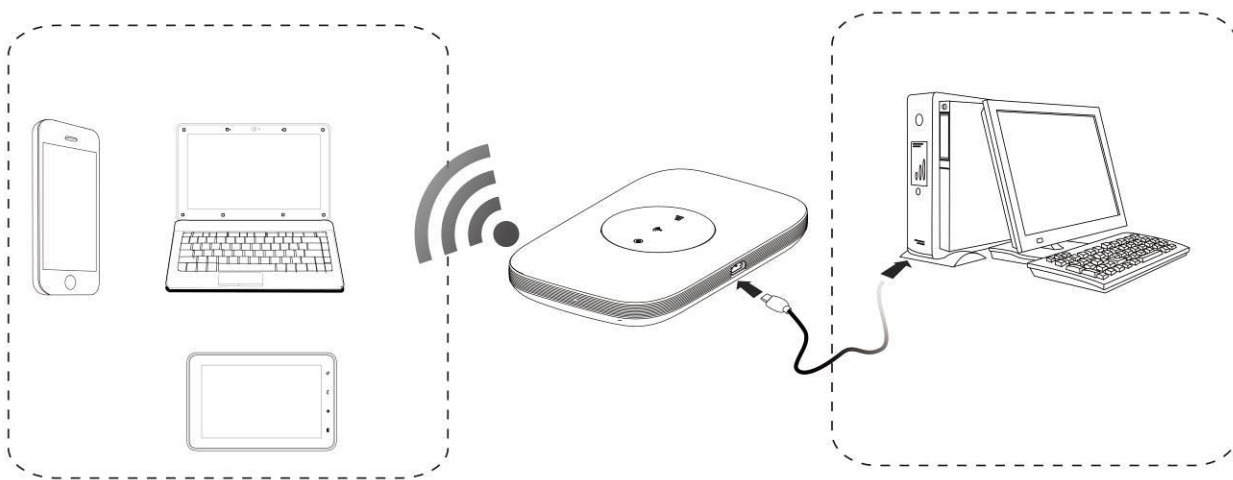
## R700 Usage

---

R700 support 4G networks. Insert the SIM card, Wi-Fi devices and the computer can access the Internet through R700, enjoy high-speed network services. Smart phones, tablet computers, game consoles and other Wi-Fi devices can be connected with the R700 Wi-Fi connection for Internet access.

Computers & laptops etc may be connected to the R700 via USB cable for Internet Access.

**R700 computer for the first time via a USB connection, you need to follow the prompts to install the driver**

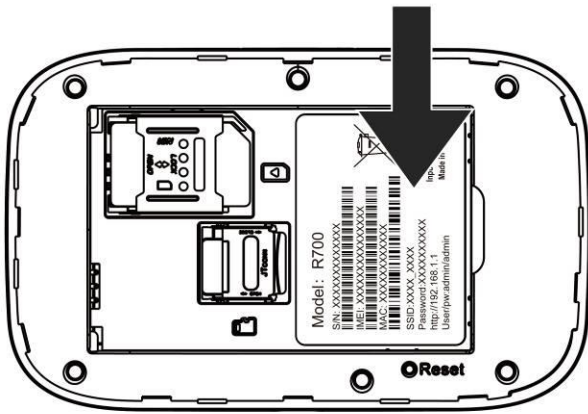


## Wi-Fi wireless Internet access

---

In order for a Wi-Fi device to establish a connection with the R700 for the first time, you will need to select the R700 SSID (Wi-Fi name) & enter the relevant Wi-Fi password, which you may find in the following ways:

**Method one: on the nameplate view the default SSID and Wi-Fi passwords**

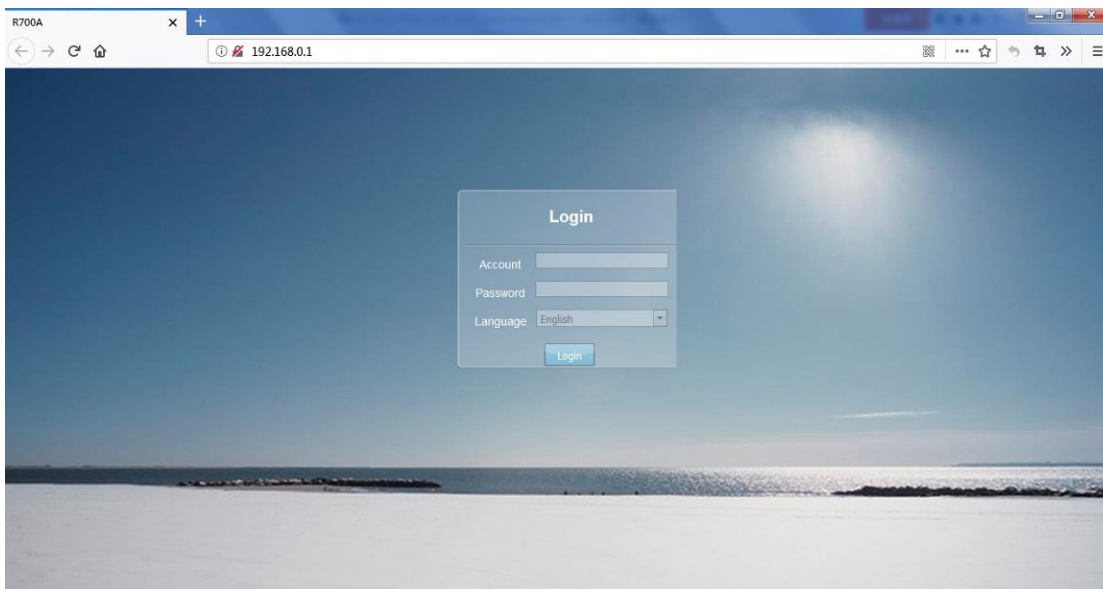


## Method Two: Login management page view

1. Computer, open your browser, input <http://192.168.0.1> and enter.

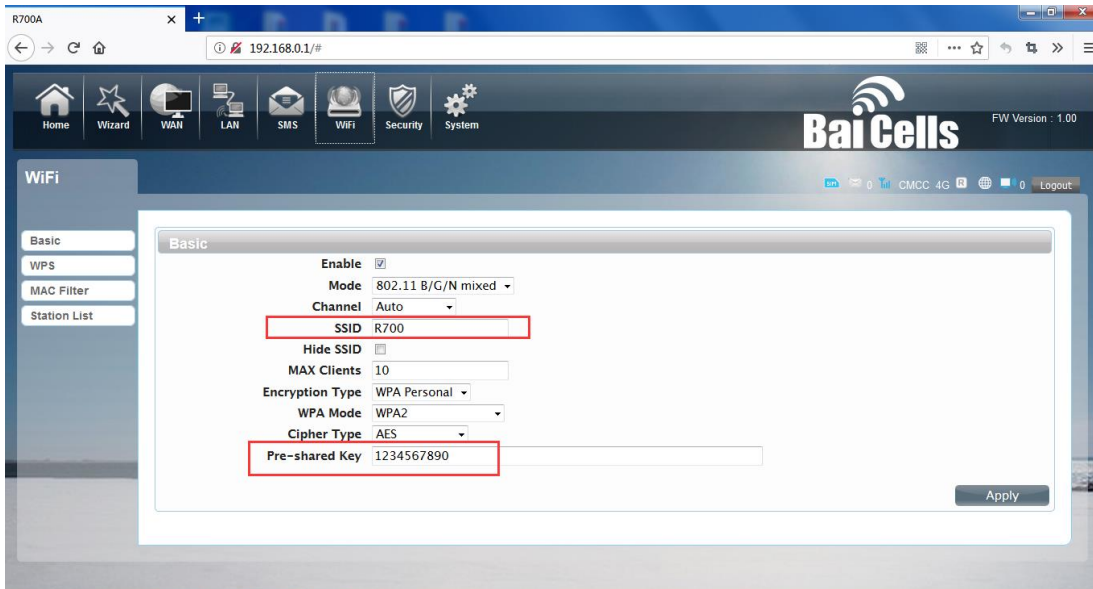
- The default Account is: **admin**
- The default Password is: **admin**

Enter the Account and Password, login administration pages



2. Enter the Wi-Fi menu; view the default SSID and Wi-Fi password

- The default SSID is: **R700**
- The default Wi-Fi Password is: **1234567890**

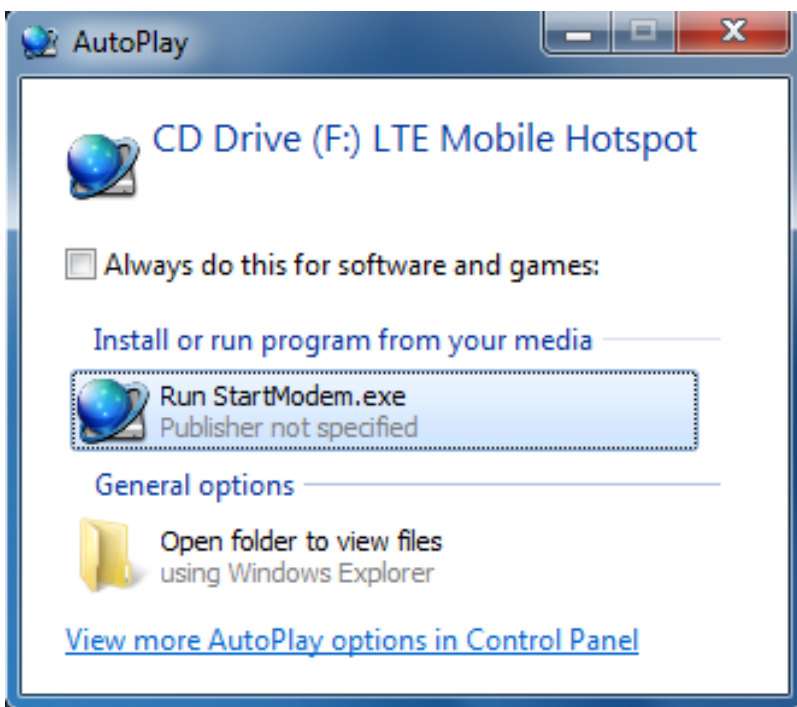
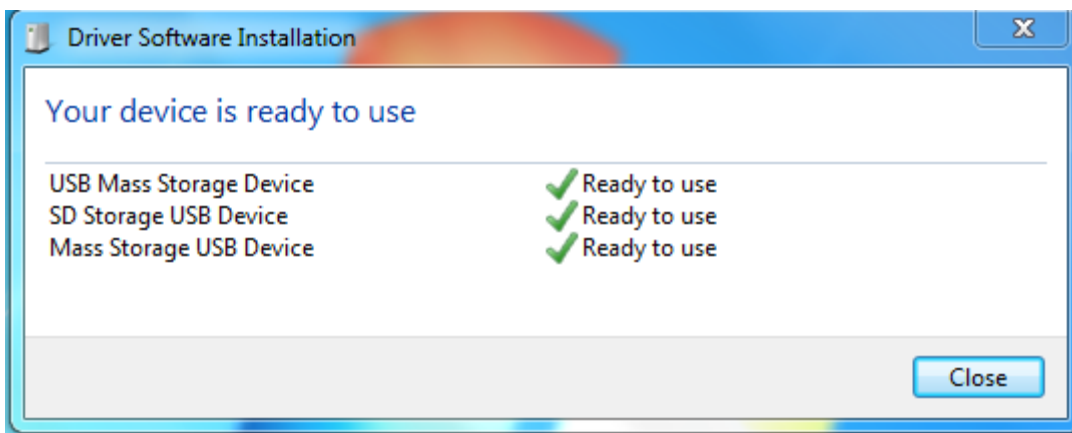
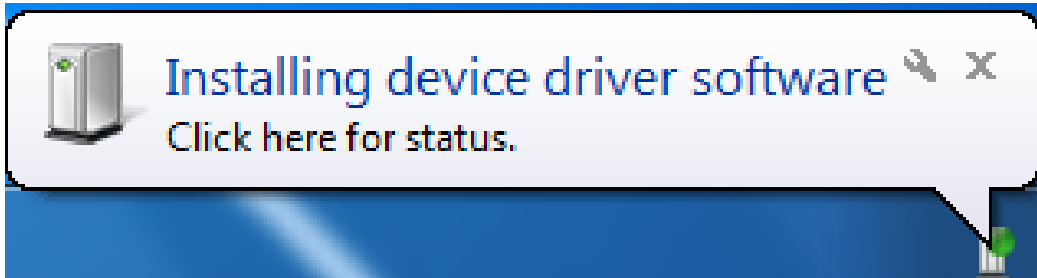



★ Recommend that you start using R700 administration pages after setting a convenient landing memorizing SSID and a higher safety factor Wi-Fi passwords

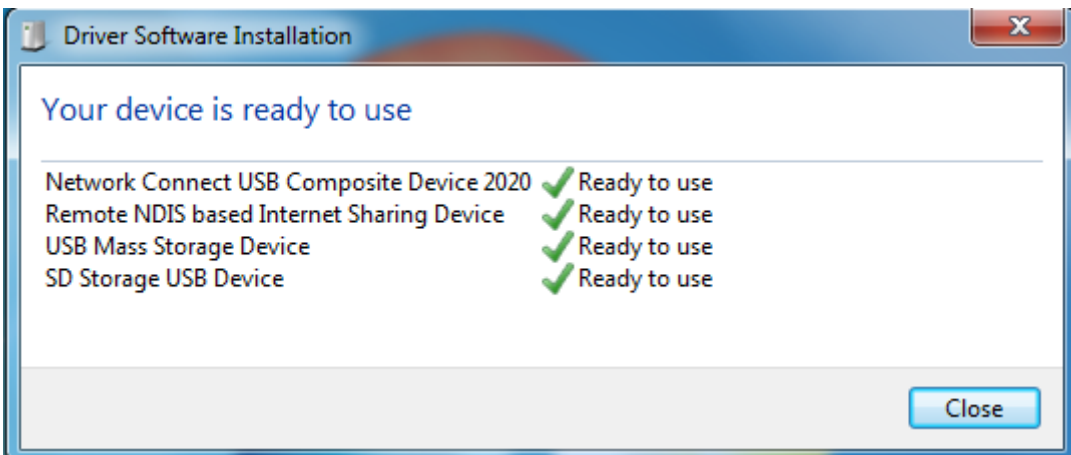
# Install the driver and connecting the device

## USB Connection: Windows 7 for example

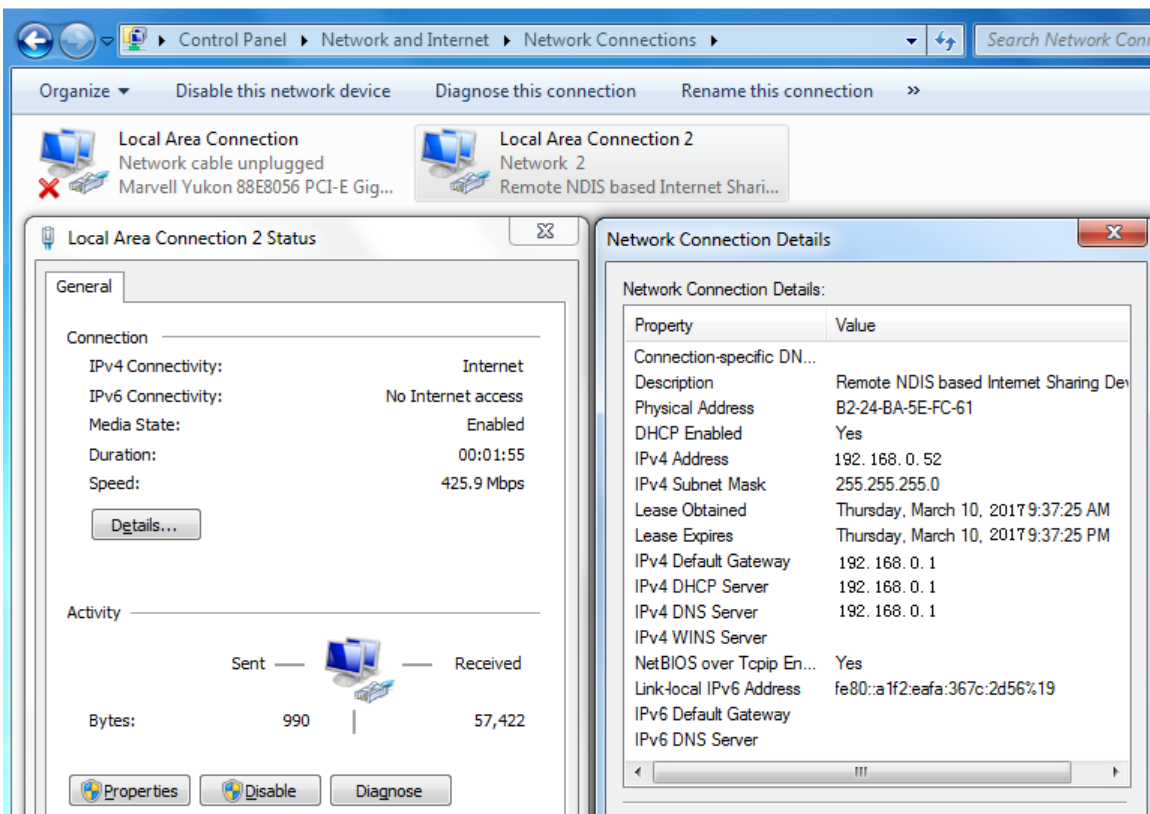
1. Keep R700 powering on, Plug the device into your computer, it will shows like the following pictures step by step.



2. Double-click the  Run StartModem.exe, wait for the installation to complete

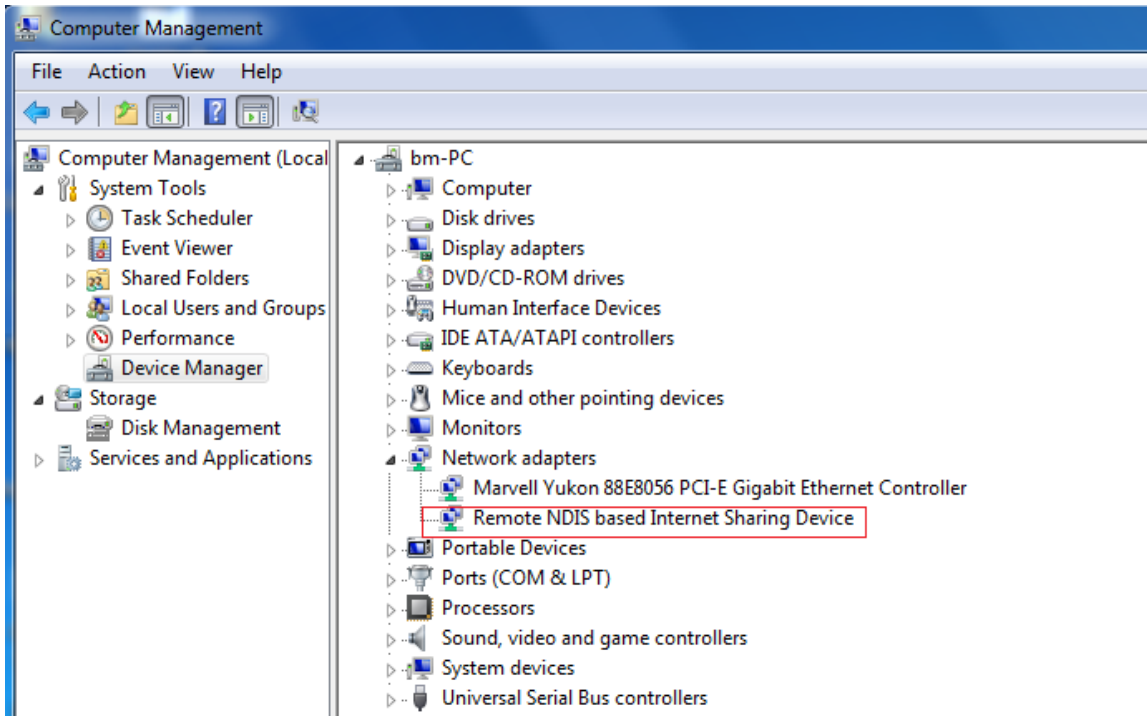


3. Check the network card is installed correctly, like the following pictures



Or,



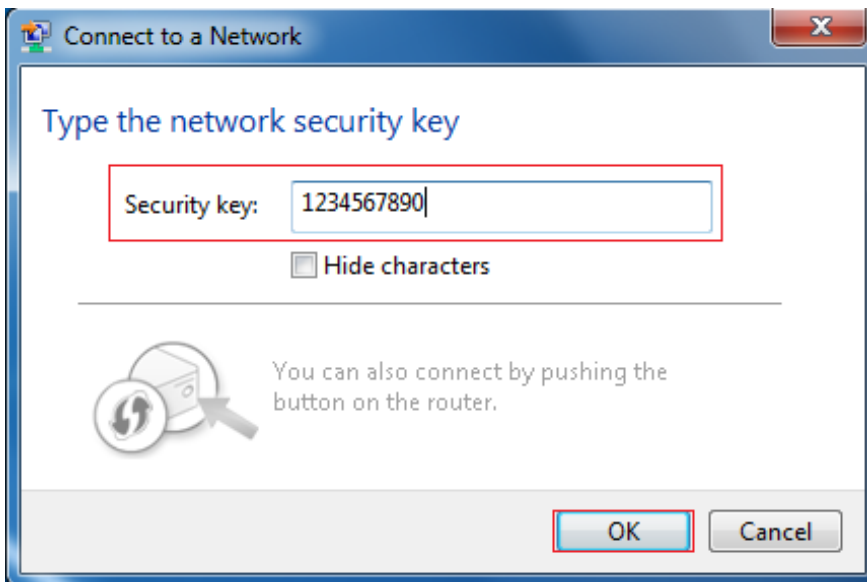


**Establish Wi-Fi connection: you must ensure that the computer equipped with a wireless network card. If the computer showed the presence of Wi-Fi connectivity, the wireless LAN is available. Otherwise, you need to check your wireless network card is working properly.**

1. In the Wi-Fi list, select the SSID consistent with R700 Wi-Fi, click Connect



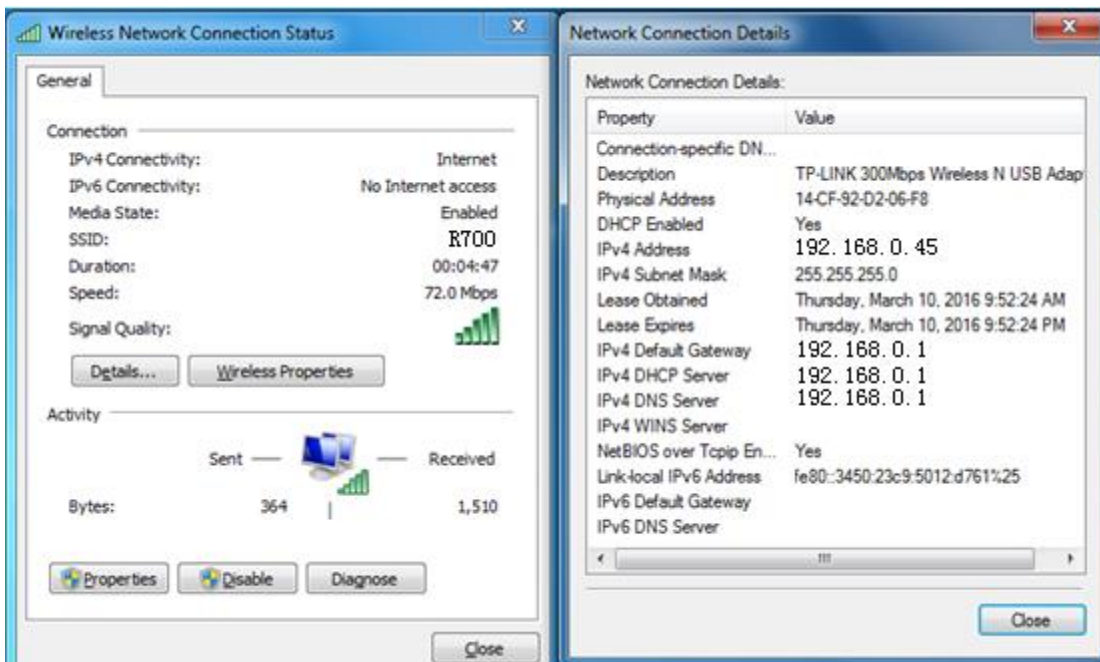
2. Enter the correct Wi-Fi password, click OK



3. Wait a moment, Wi-Fi connection is displayed next to the name, Wi-Fi connection is successful

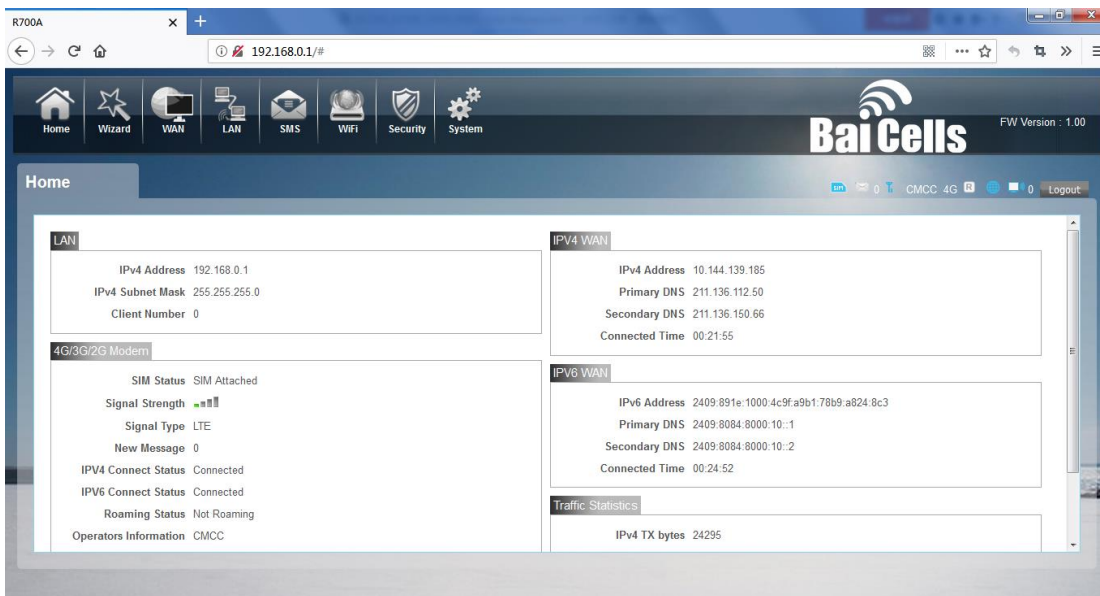


4. Check the network card is installed correctly, like the following pictures



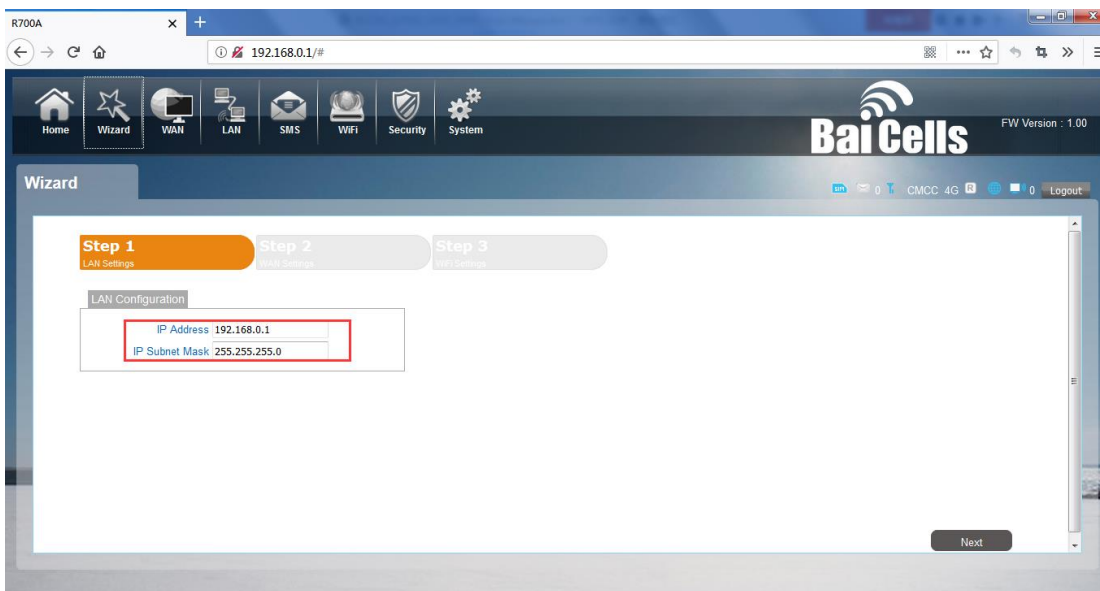
# WebUI

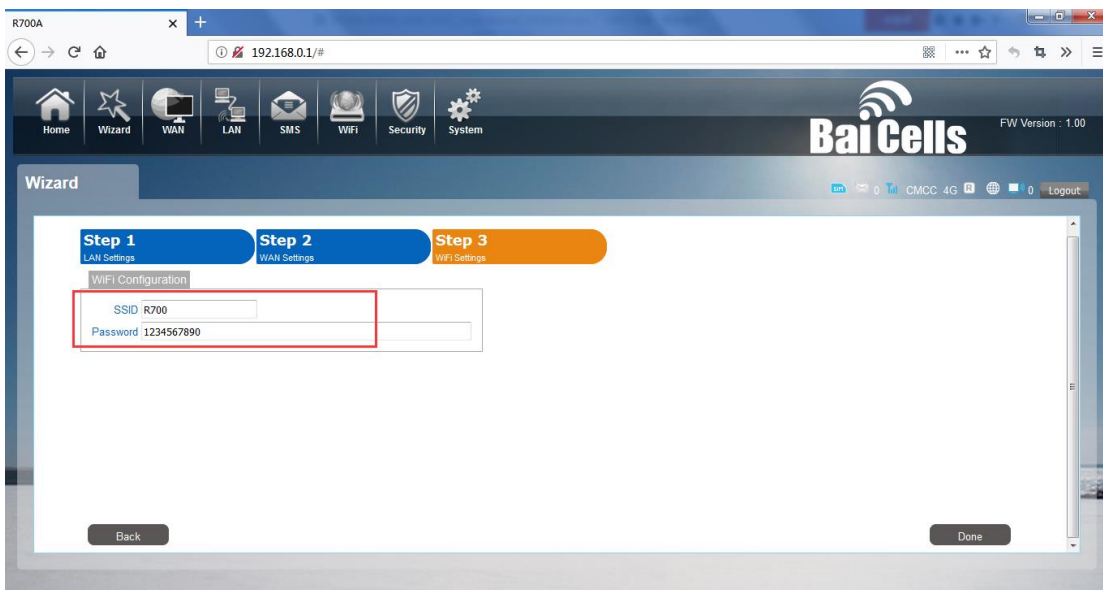
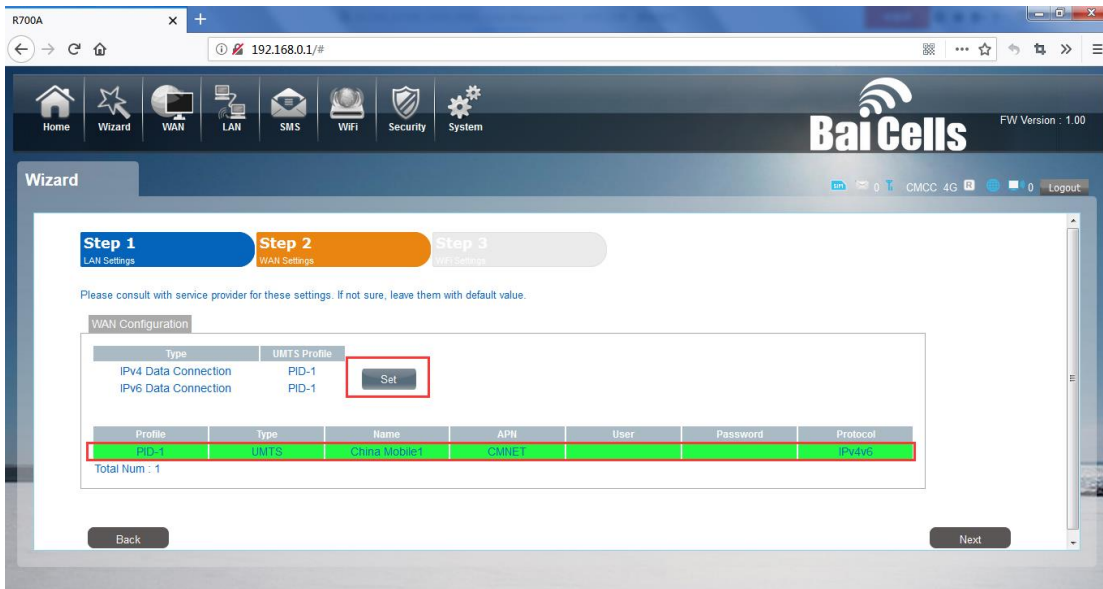
## ●Home



First part of the main display settings and network status information, such as IP address, SIM card status, type and quality of the network signal, whether it is roaming, with or without a new message, and traffic statistics, and system uptime, and so on.

## ●Wizard

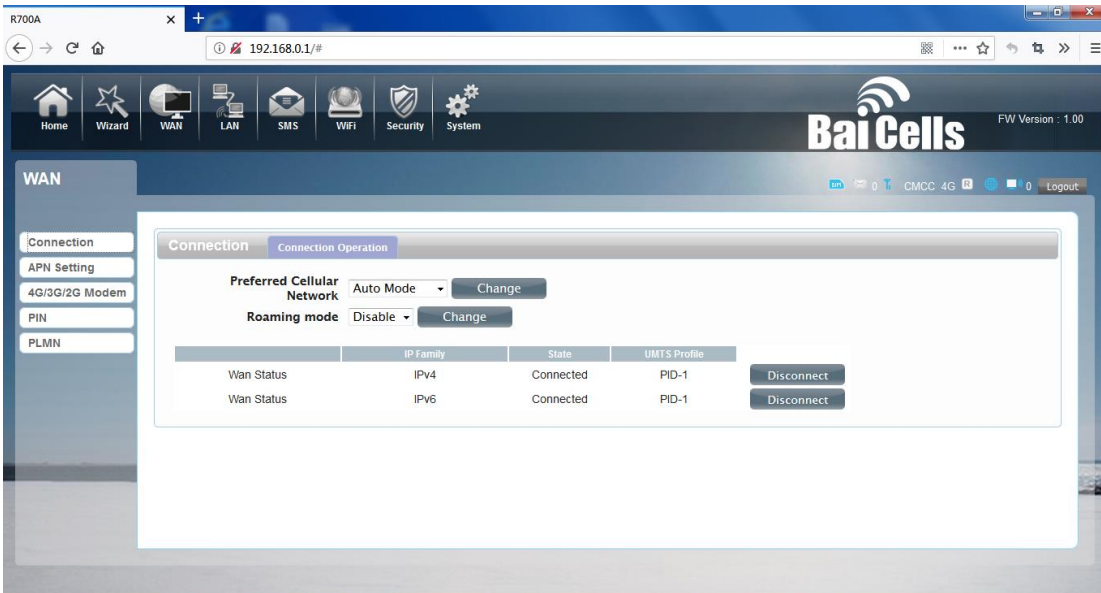




You can quickly change the LAN configuration, set the APN, and change the SSID /password through the wizard function.

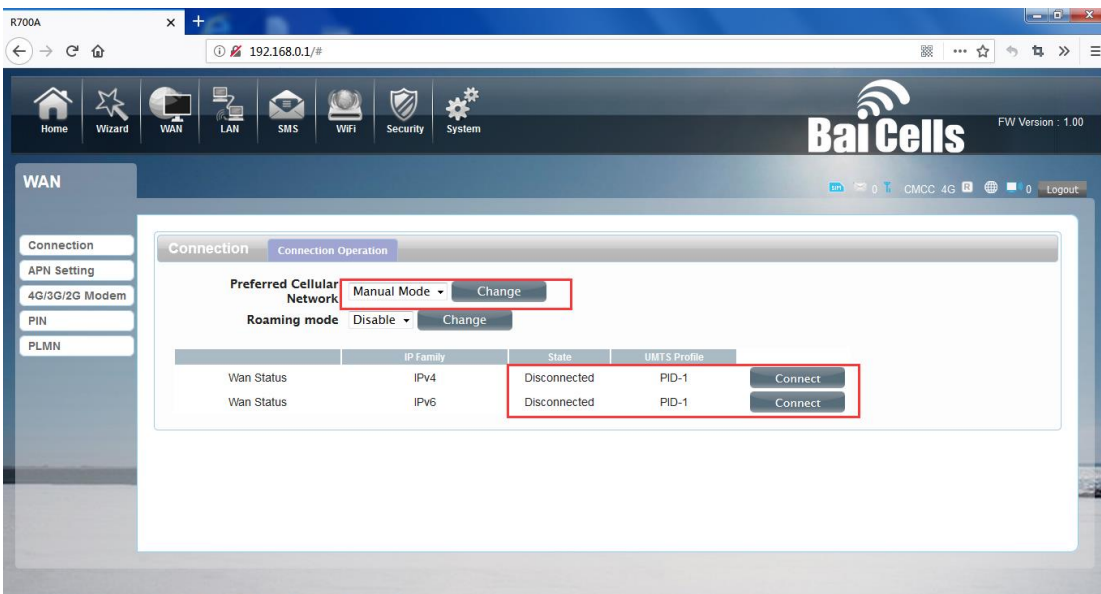
## ●WAN

### 1. Connection

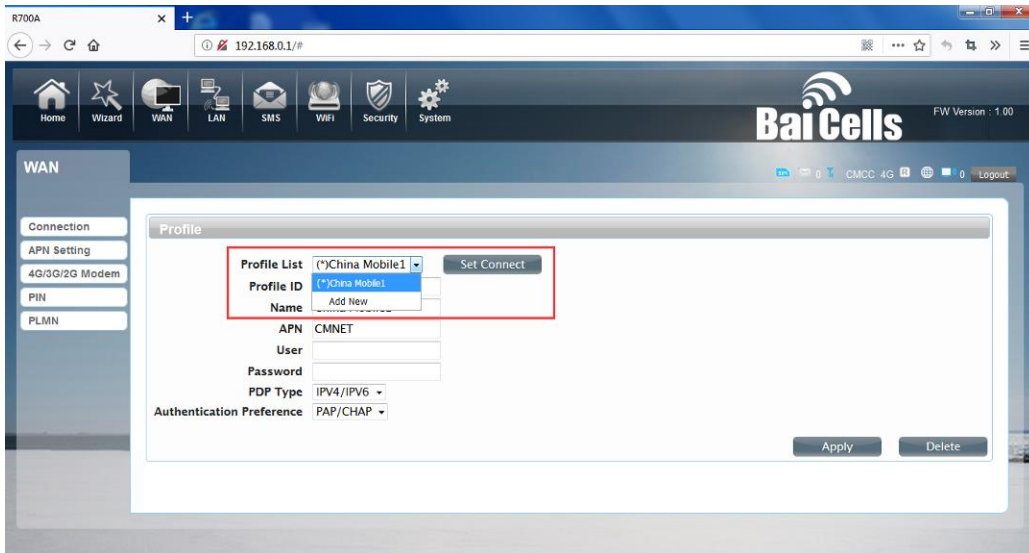


### Dialing Mode:

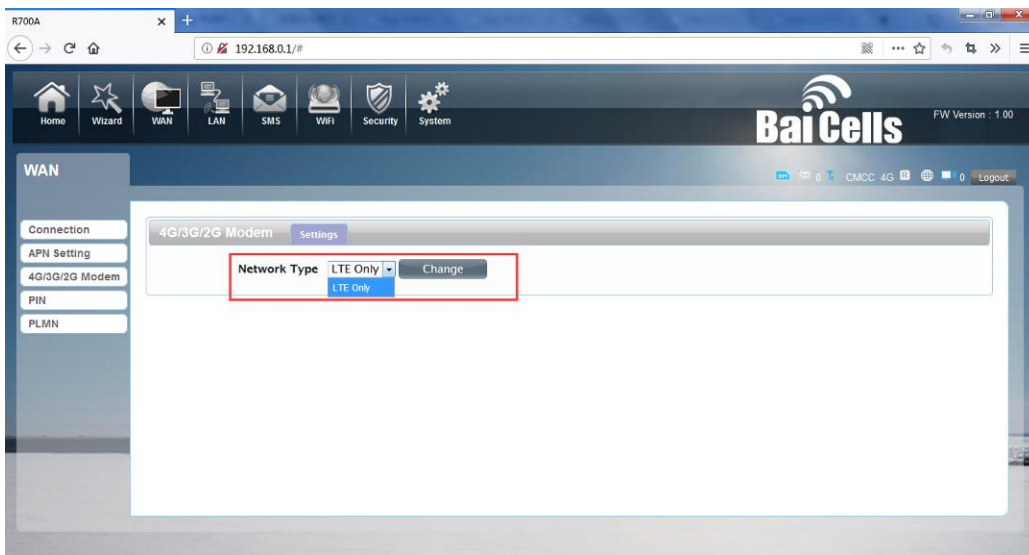
Select the Auto Mode, after you turn on R700 without additional operations, the device will automatically connect to the network; select the Manual Mode, you need to manually connect to the network after opening the R700 management page.



**2. APN Setting:** You can customize the network configuration or manually add the new APN and set default APN.

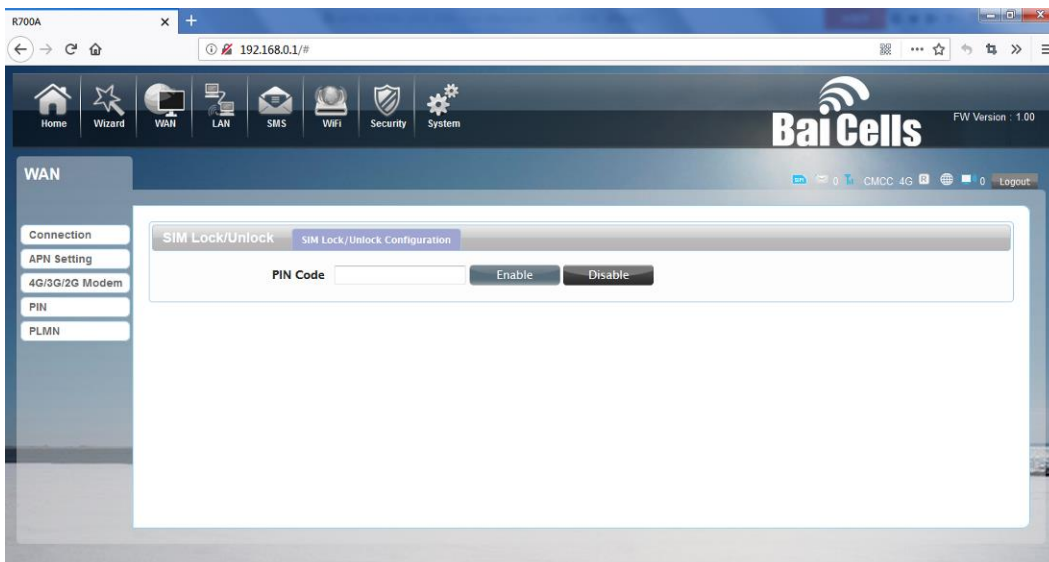


### 3. 4G Modem



There is a type of network can be chose, LTE only is using only 4G.

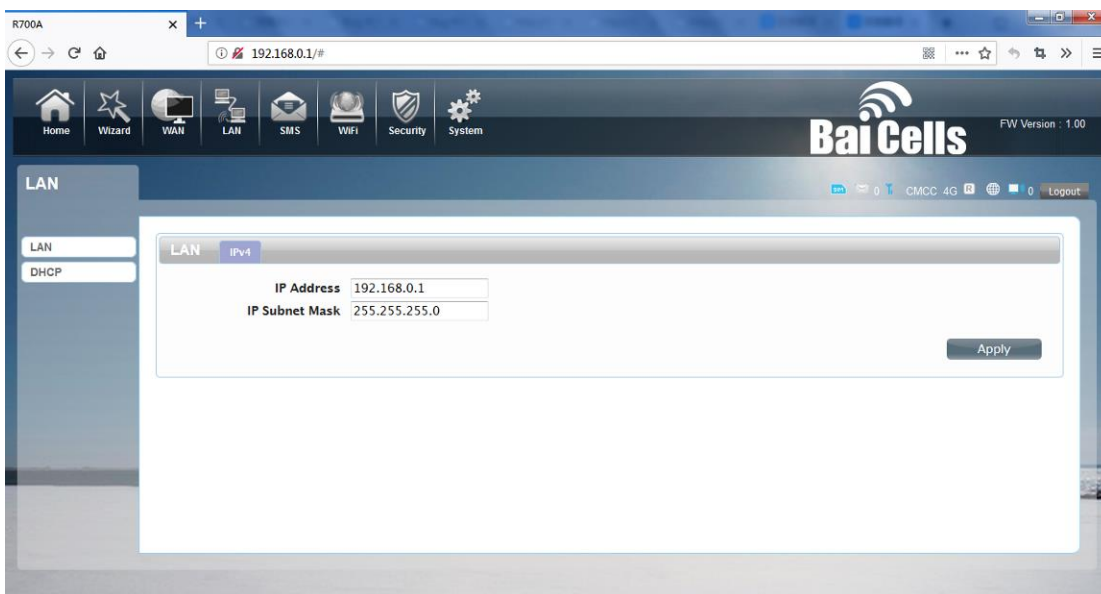
### 5. PIN



Open your PIN, if you reboot the device, you need to login management page, and the page will prompted to enter the correct PIN code, you can use the SIM card. PIN / PUK code supplied with the SIM card provided by your carrier, please consult your carrier.

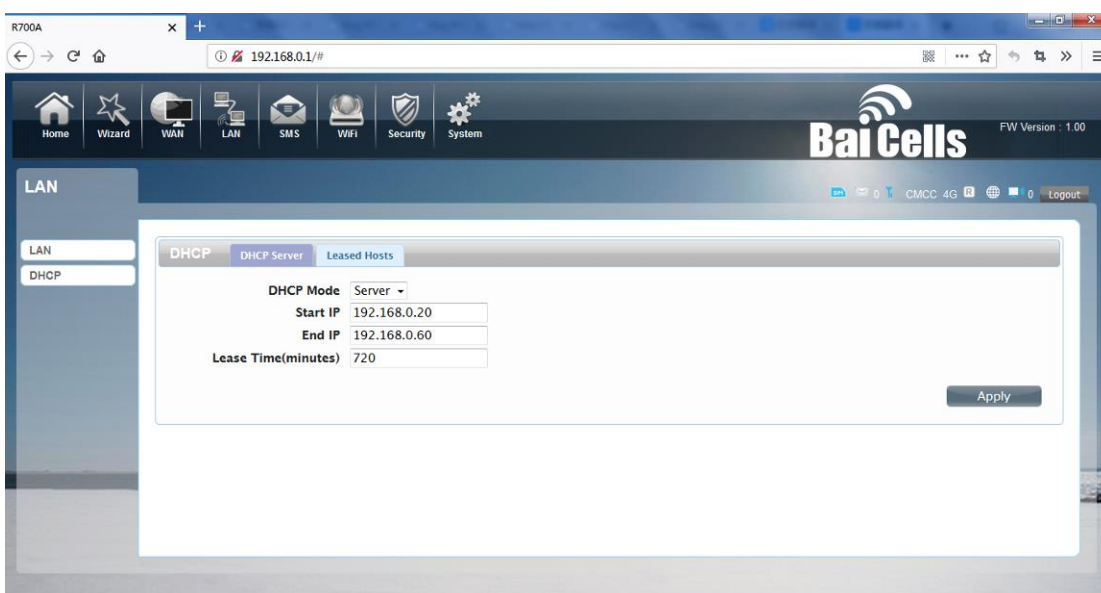
## ●LAN

### 1. LAN



We can change IP address in this page.

### 2. DHCP

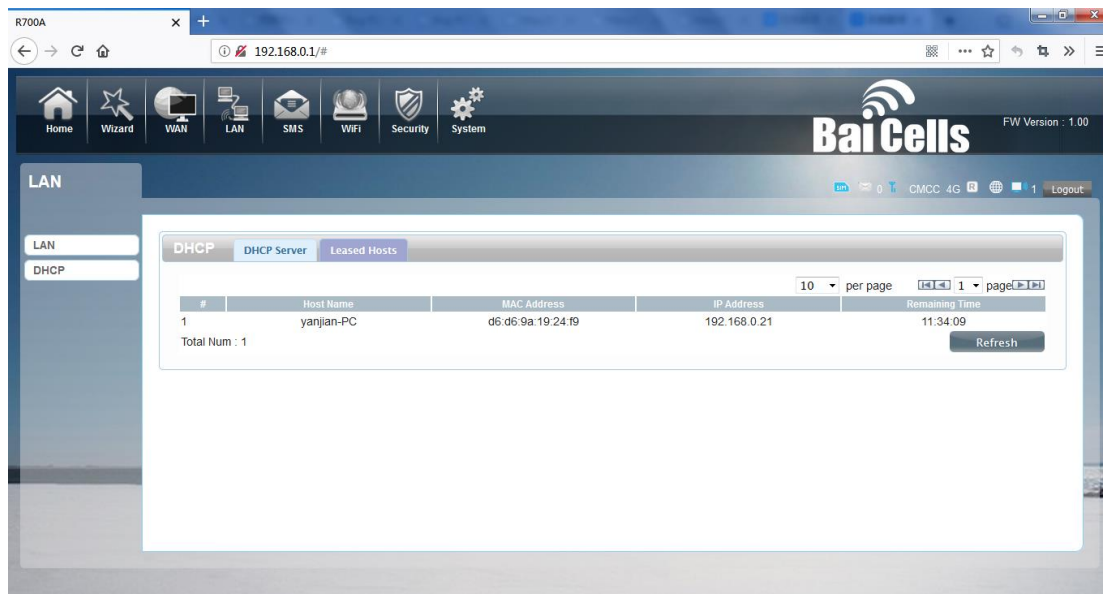


DHCP Mode: Select the server mode, the device can be done using a DHCP server; choose None, which is off the server function.



Start / End IP address: Changing DHCP assigned IP and IP segments.

Lease Time: Each is assigned a time to use the IP

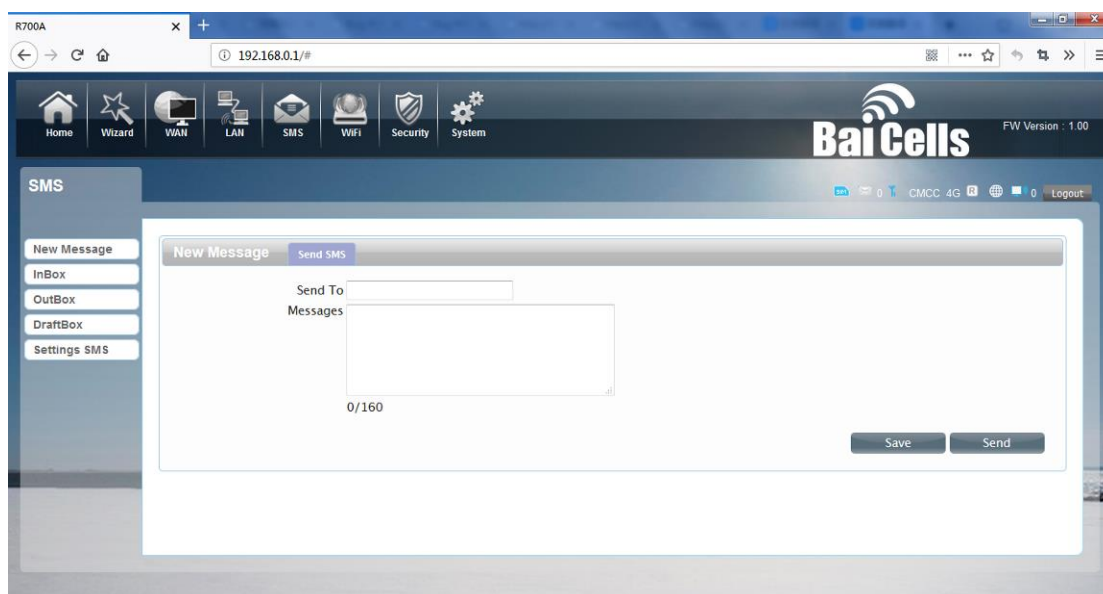


Leased Hosts: the R700 each wireless device list and USB device can view the Host name, MAC Address, IP Address, information about the Remaining Time.

## ●SMS

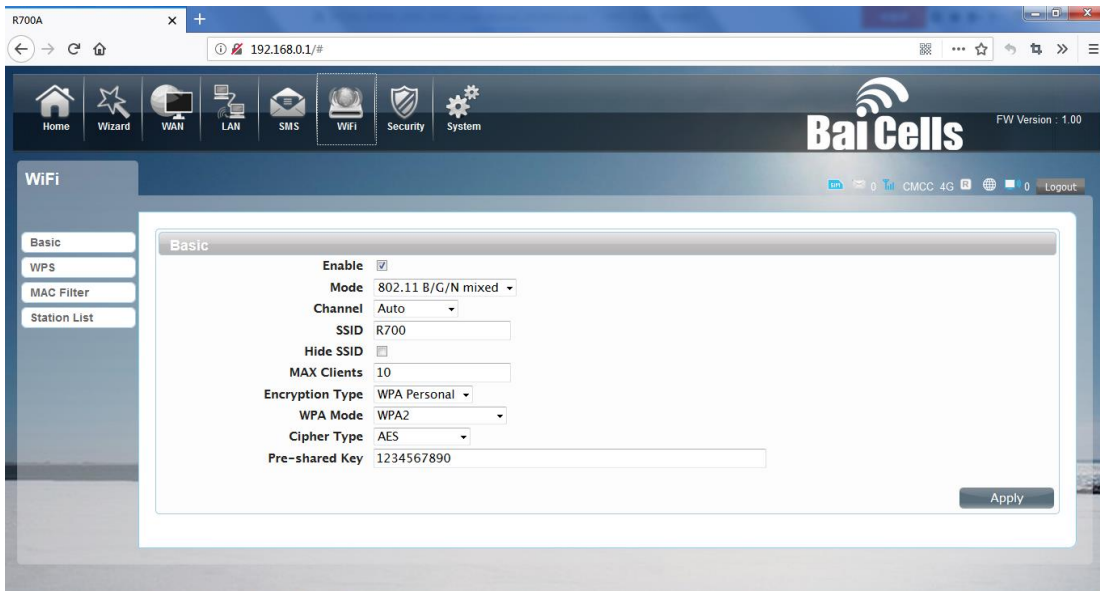
When using SIM card to access network, you could also send text messages at the time. You can send, receive, reply, forward, and save test messages. You can send 10 text messages at the same time; SMS number intervals with a semicolon.

Also you can set the storage location of messages, and so on. We can operate the SMS in this page.



## ●Wi-Fi

### 1. Basic

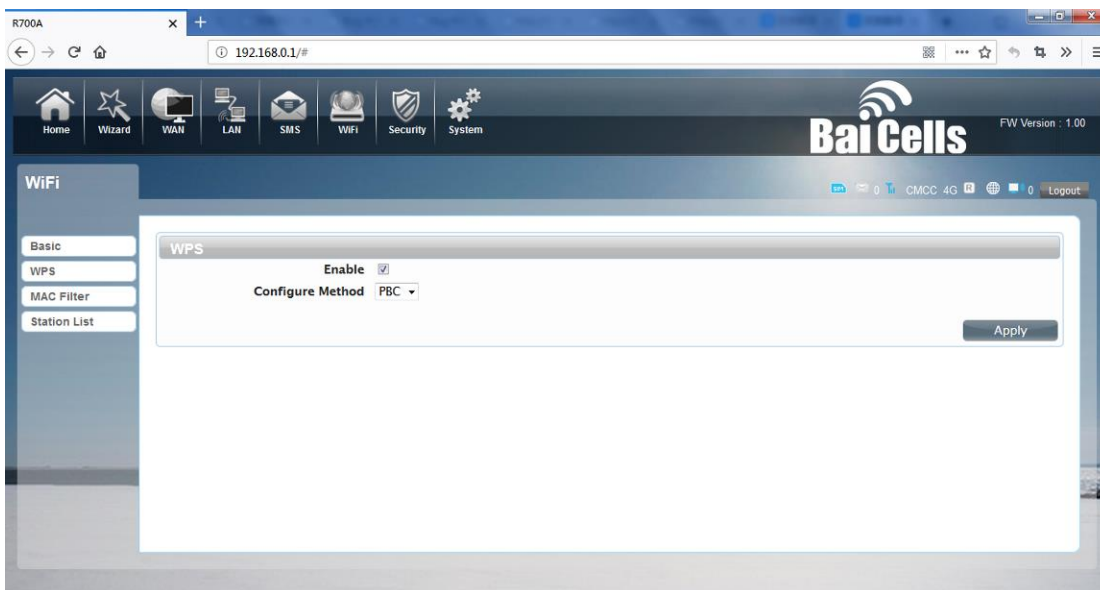


We can set the Wi-Fi configuration in this page, like B/G/N mode, Channel, SSID, WI-FI KEY and so on.

## 2. WPS

R700 supports two kinds of WPS authentication, PBC and PIN. Default is PBC authentication.

### WPS PBC authentication:

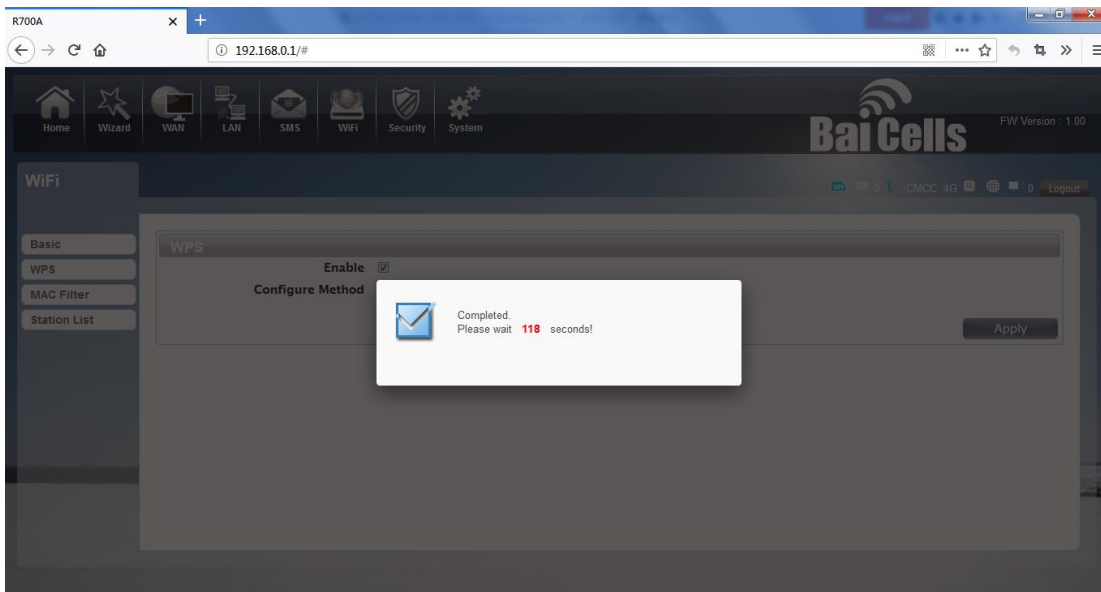


If your Wi-Fi is enabled, device supports WPS (Wi-Fi Protected Setup) and you have forgotten or do not wish to enter your password to connect to your R700, you may use the following available procedures for quick access to Wi-Fi.

Open the WPS:

WPS can be opened by two methods. The first method is ,Entering the management interface page, press

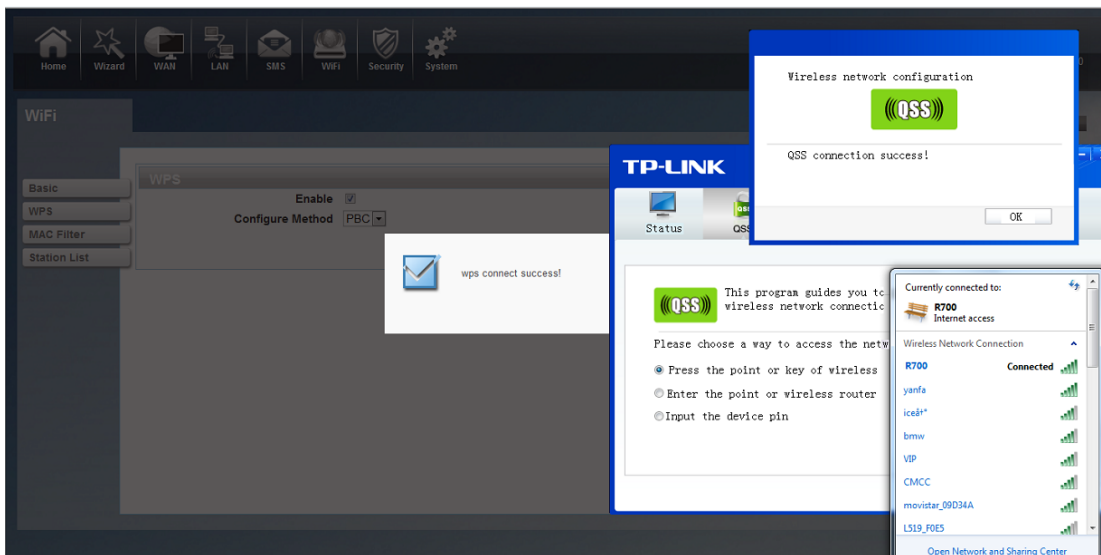
the “Apply” button, open the WPS. It will last 120 seconds. Like the following picture.



Using WPS to connecting the R700 (Computer for example):

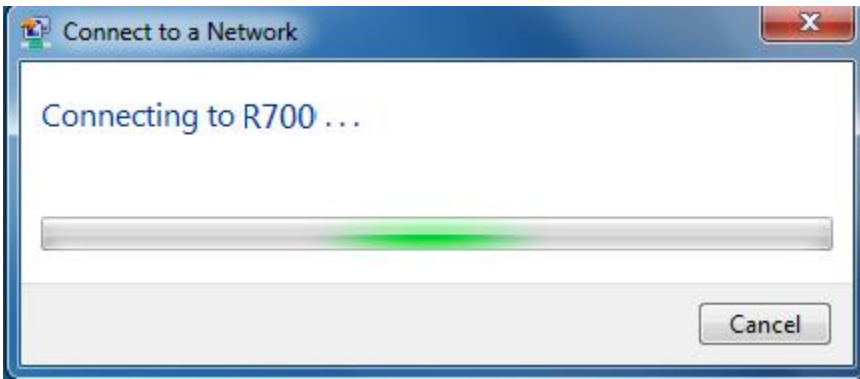
You can press the WPS button on the wireless card if your wireless card also supports WPS authentication.

Waiting for a moment, it will be prompted to connect successfully.

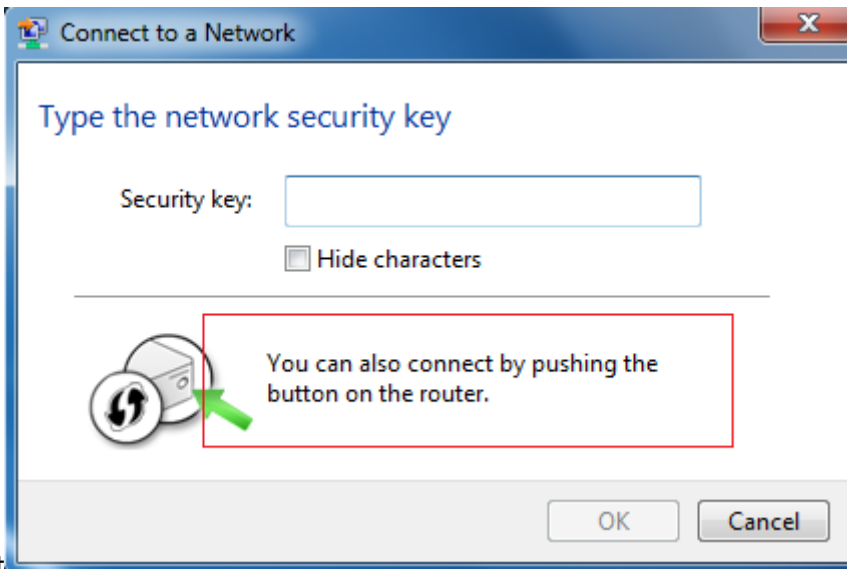


Or

Select the SSID of the device and connect. Then you can see like the following picture.



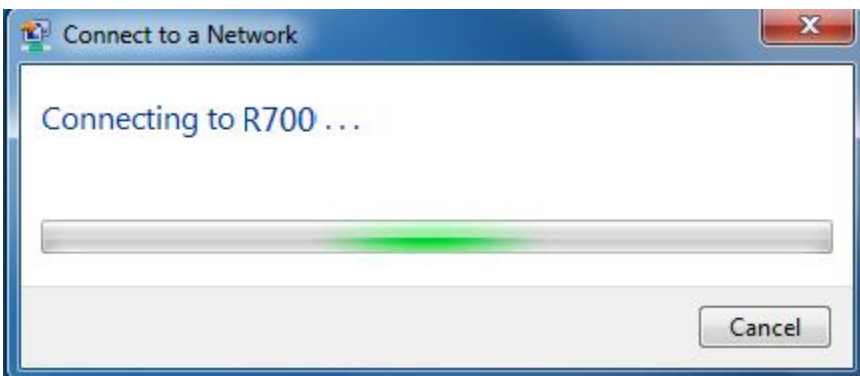
The second method is: Select the SSID of the device and



connect.

Press the WPS button on the R700, activate the WPS. It will last 120 seconds.

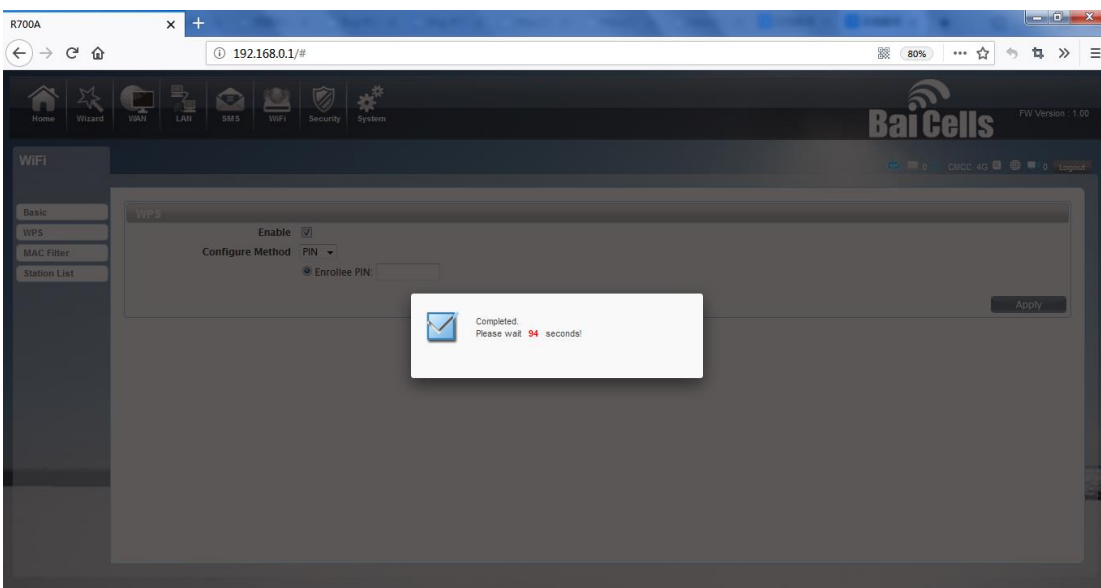
Then you can see like the following picture.



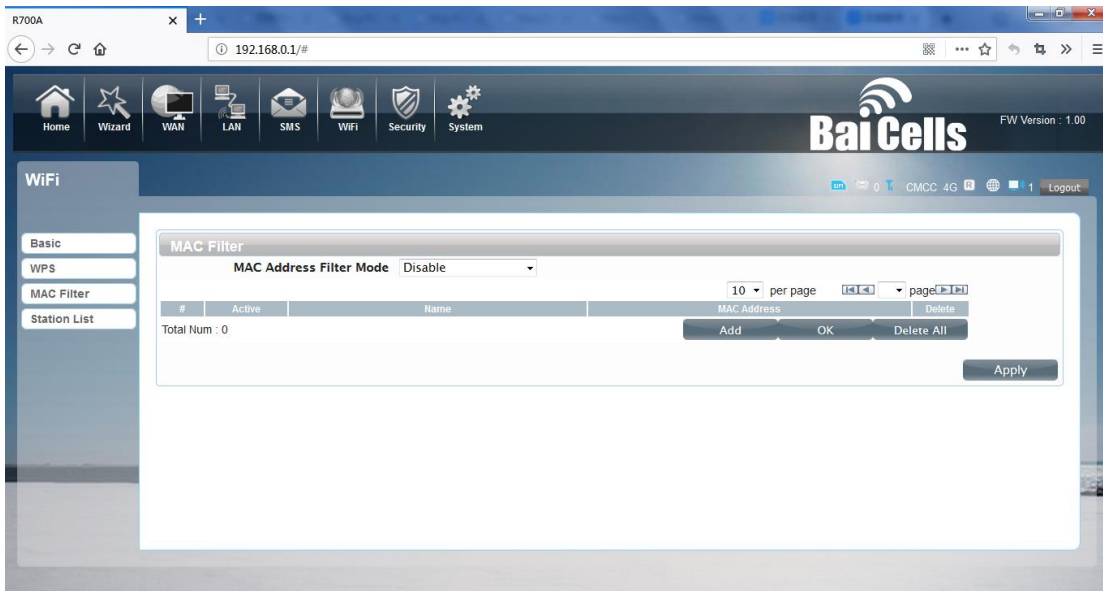


### WPS PIN authentication:

The connection to the R700 is achieved by inputting the relevant PIN key into the enrollee PIN text box, which you may find in the wireless network card. When you applied, it will last 120 seconds. The premise is that the wireless network card or the clients must support WPS PIN authentication. Like the following pictures.



### 3. MAC Filter

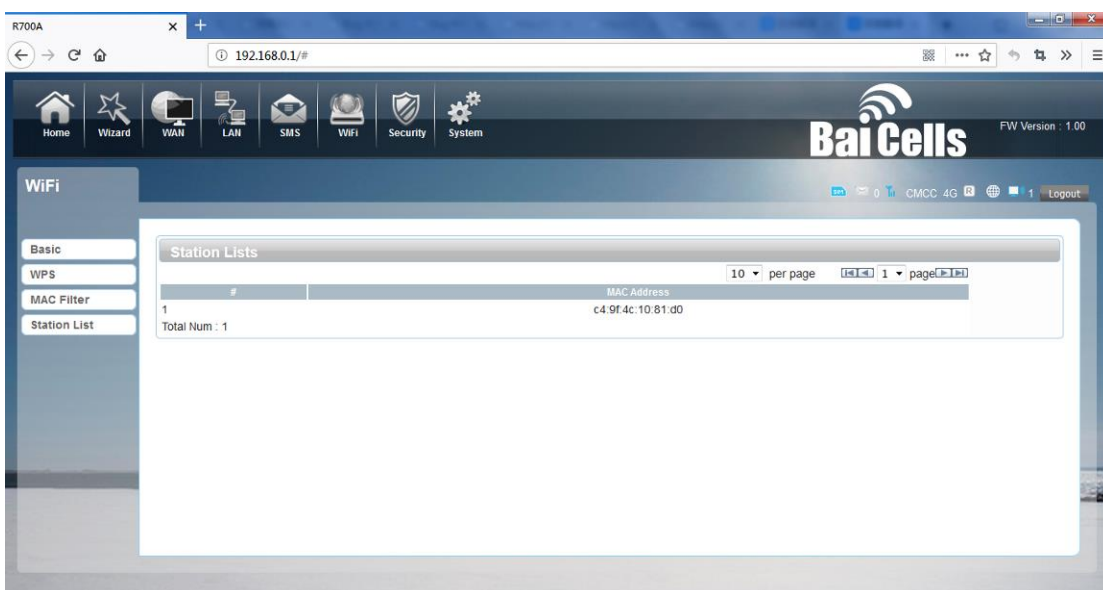


Deny list Stations: If you add the computers or wireless devices MAC address into the list, it can prohibiting the computers or wireless devices connect to the R700. The computers or wireless devices MAC address which are not in the list can able to connect to R700.

Allow list Stations: Opposite with Deny list Stations. It only allows the devices in the list to connect to the R700; other wireless devices are unable to connect to the R700

Disable: It means close the function of the MAC Address Filter.

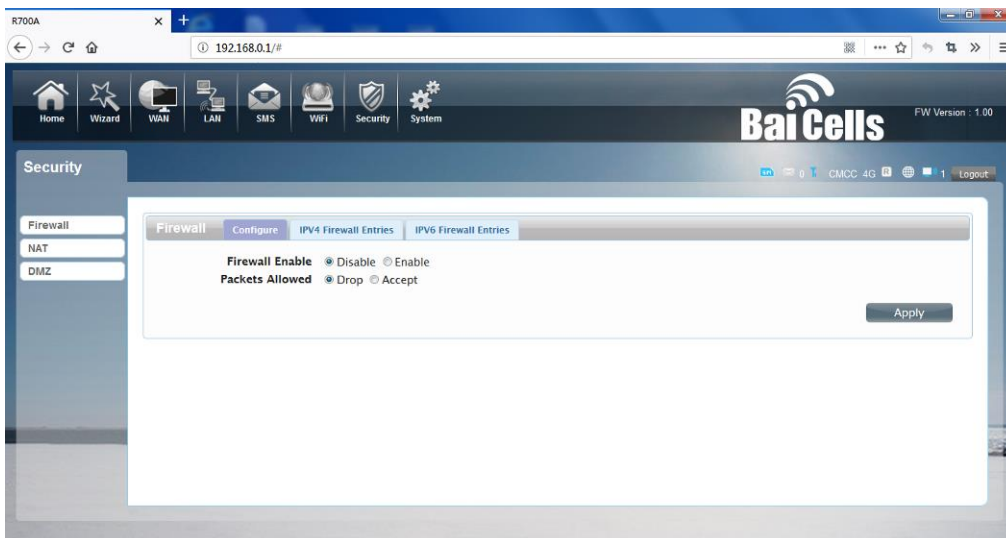
## 4. Station List



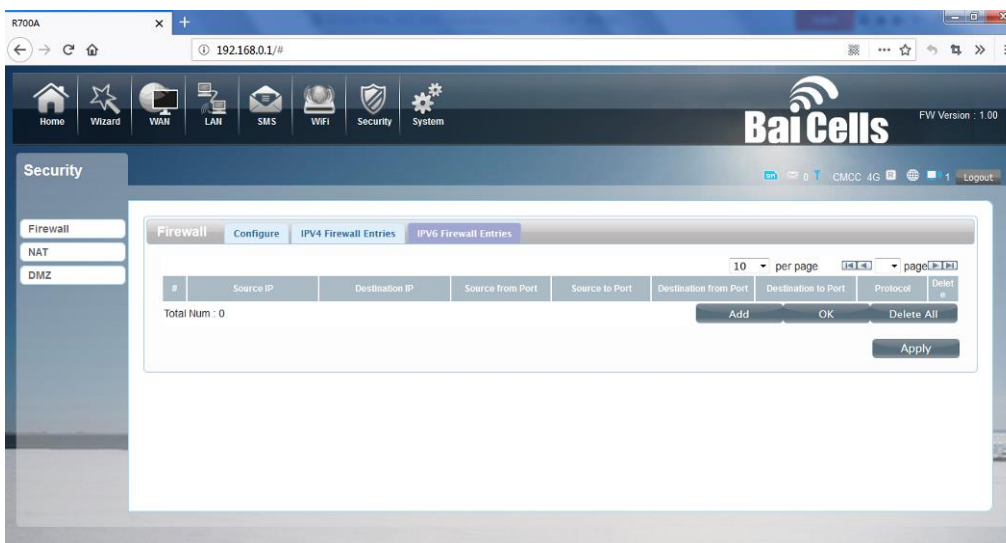
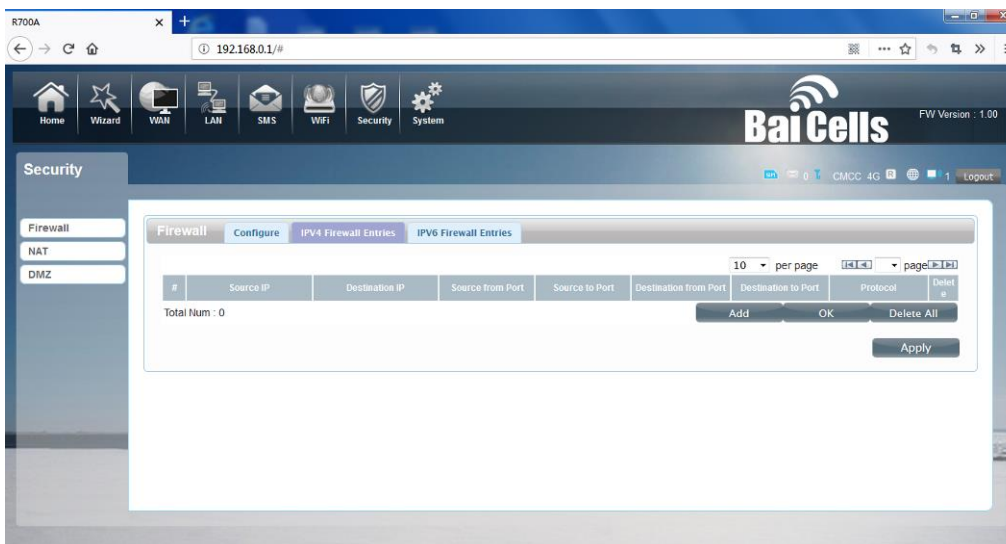
Show the information of wireless devices which are connected to the R700.

## ●Security

# 1. Firewall



Firewall configuration: You can Disable or Enable the Firewall function. Also you can set the matching packets rule to receive or reject.

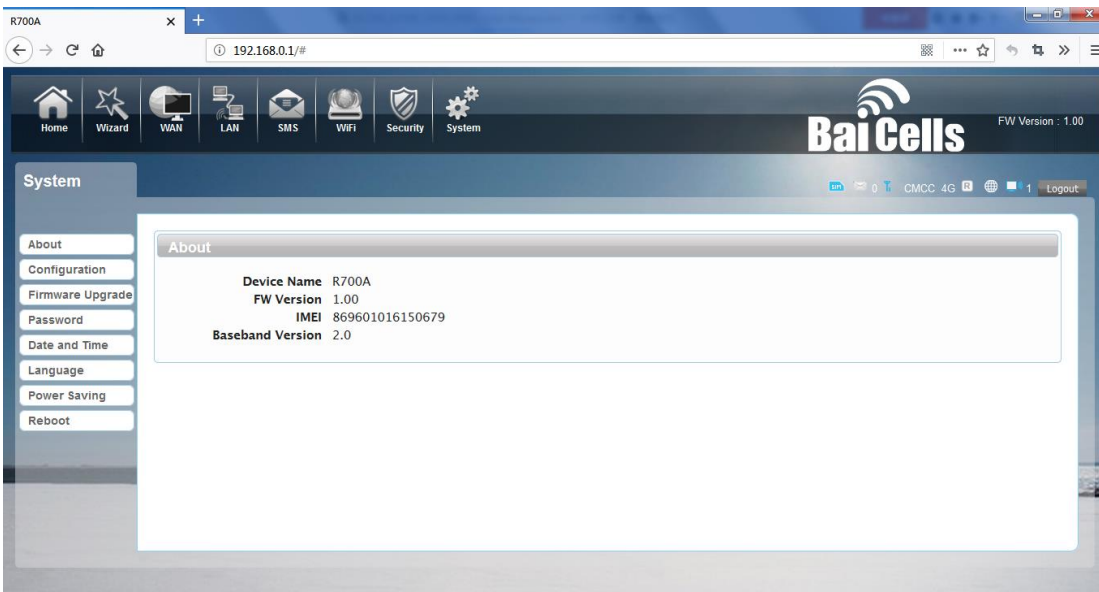


You can add the rule in the list.

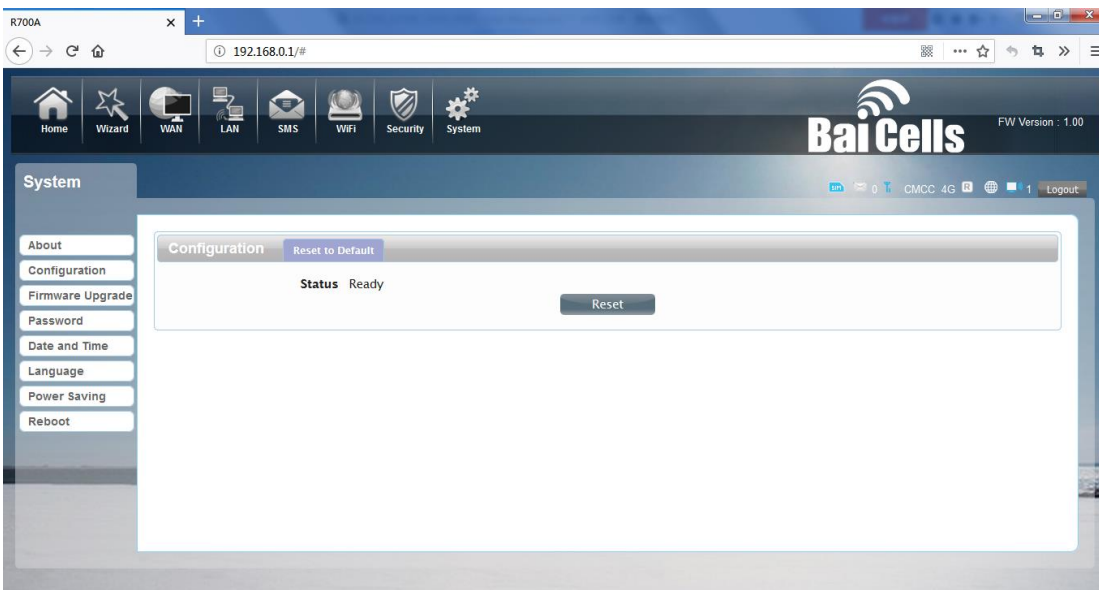
# ●System

## 1. About

R700 displays some basic information, such as device name, firmware version, IMEI, baseband version.



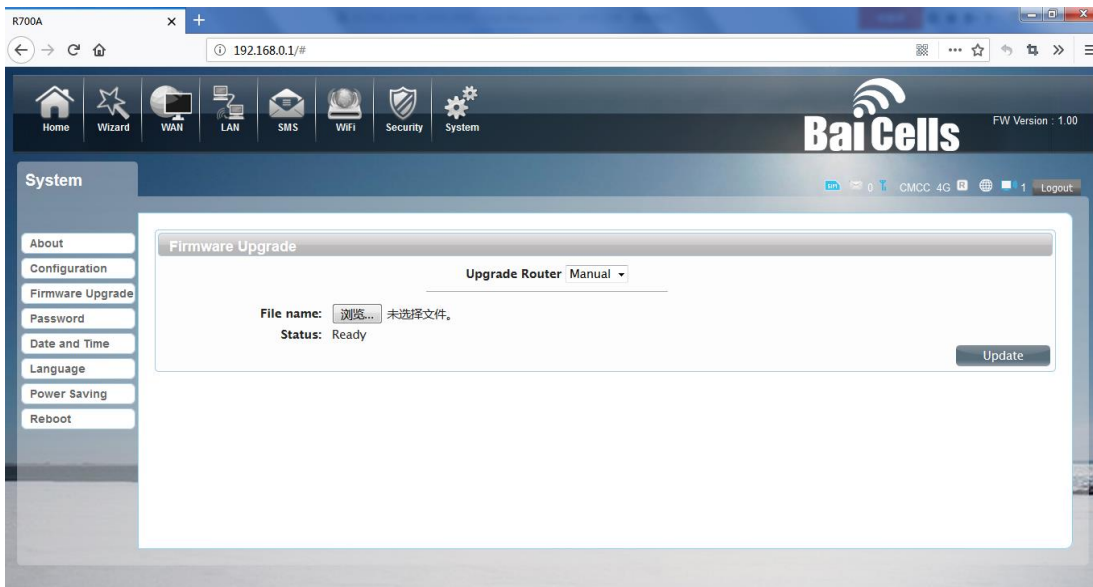
## 2. Configuration



Restore the factory settings, all the personal configuration will be deleted, all configuration pages will be restored to the factory defaults.

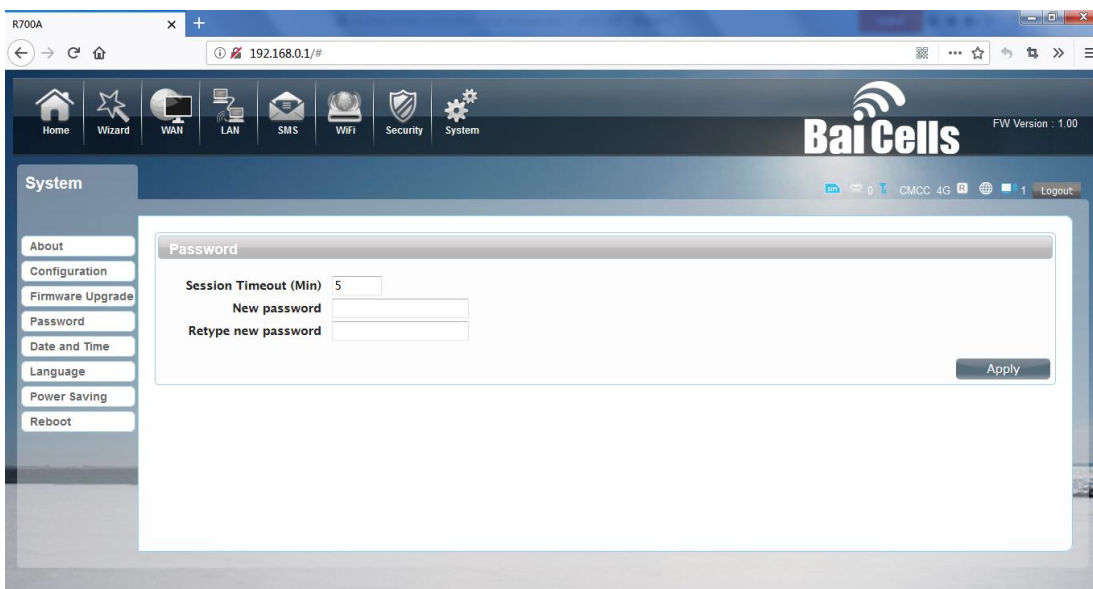
## 3. Firmware Upgrade





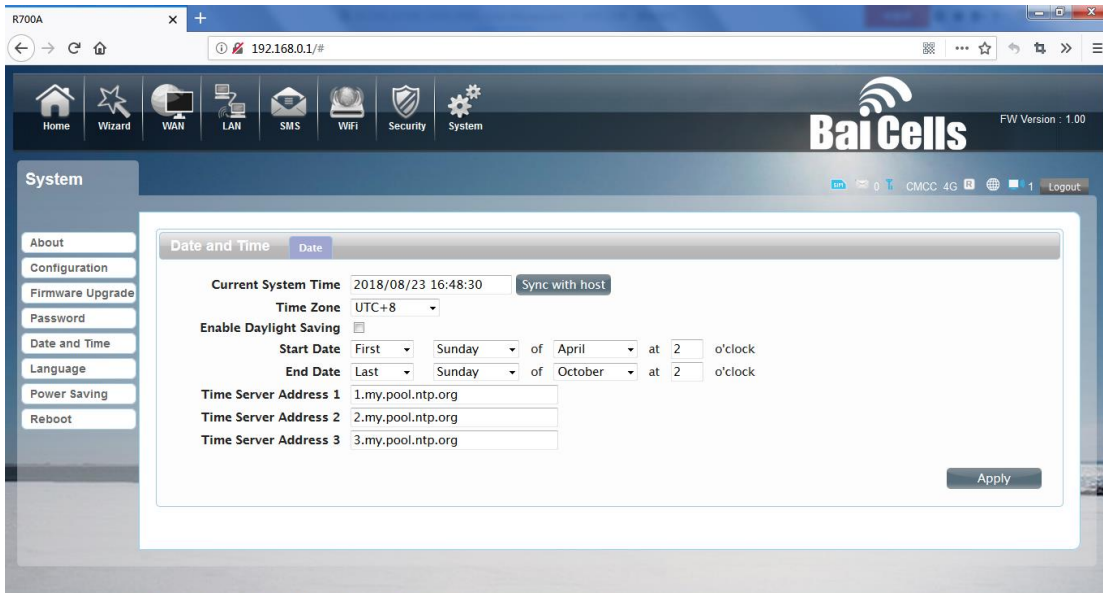
Select the file to update the software

## 4. Password



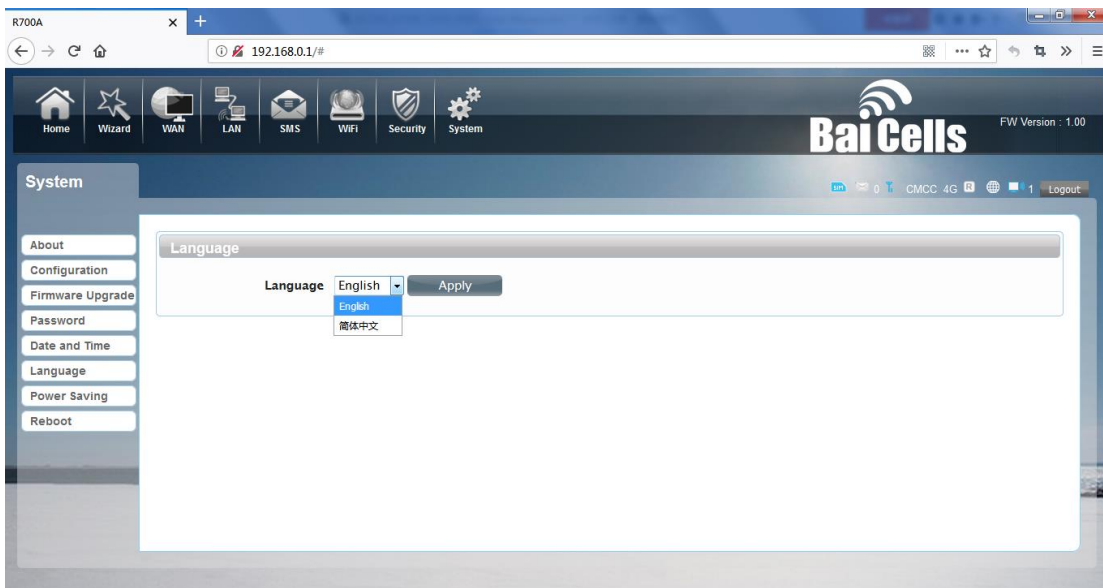
Modify the login password for administrator interface. Also you can set the time to logout the UI automatically.

## 5. Date and Time



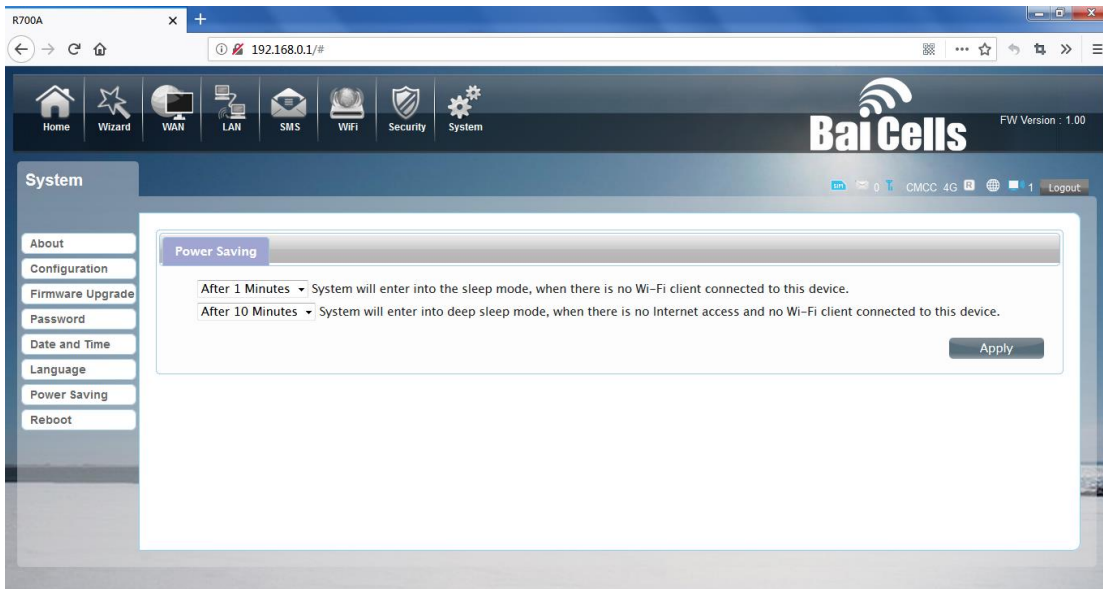
You can synchronize the time with the host; you can also select the time zone

## 6. Language



You can change the UI language in this page.

## 7. Power saving

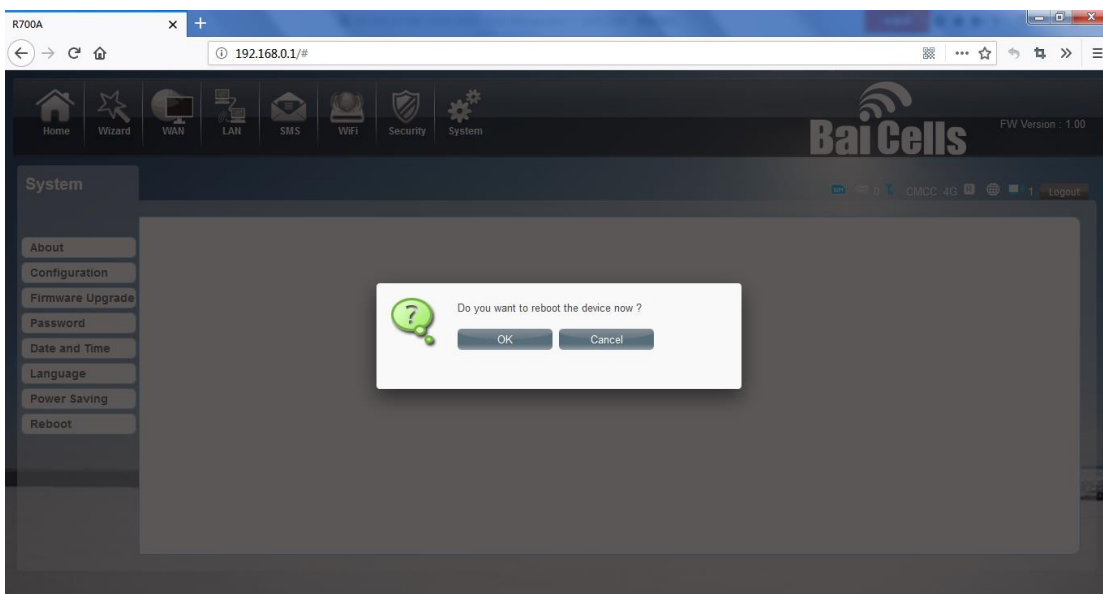


You can change the time of sleep mode or deep sleep mode. In this page you also can Disable the Power saving function.

Sleep mode: System will enter into the sleep mode, when there is no Wi-Fi client connected to this device.

Deep sleep mode: System will enter into deep sleep mode, when there is no Internet access and no Wi-Fi client connected to this device.

## 8. Reboot



## 9. FCC Compliance

This device complies with part 15 of the FCC Rules. Operation is subject to the following two conditions: (1) This device may not cause harmful interference, and (2) this device must accept any interference received, including interference that may cause undesired operation.

Any Changes or modifications not expressly approved by the party responsible for compliance could void the user's authority to operate the equipment.

This equipment has been tested and found to comply with the limits for a Class B digital device, pursuant to part 15 of the FCC Rules. These limits are designed to provide reasonable protection against harmful interference in a residential installation. This equipment generates uses and can radiate radio frequency energy and, if not installed and used in accordance with the instructions, may cause harmful interference to radio communications. However, there is no guarantee that interference will not occur in a particular installation. If this equipment does cause harmful interference to radio or television reception, which can be determined by turning the equipment off and on, the user is encouraged to try to correct the interference by one or more of the following measures:

- Reorient or relocate the receiving antenna.
- Increase the separation between the equipment and receiver.
- Connect the equipment into an outlet on a circuit different from that to which the receiver is connected.
- Consult the dealer or an experienced radio/TV technician for help.

## 10. Warning

Your mobile wifi is a radio transmitter and receiver. It is designed and manufactured not to exceed the emission limits for exposure to radiofrequency (RF) energy set by the Federal Communications Commission of the U.S. Government. These limits are part of comprehensive guidelines and establish permitted levels of RF energy for the general population. The guidelines are based on standards that were developed by independent scientific organizations through periodic and thorough evaluation of scientific studies. The standards include a substantial safety margin designed to assure the safety of all persons, regardless of age and health. The exposure standard for wireless mobile wifi employs a unit of measurement known as the Specific Absorption Rate, or SAR. The SAR limit set by the FCC is 1.6 W/kg. \* Tests for SAR are conducted with the wifi transmitting at its highest certified power level in all tested frequency bands. Although the SAR is determined at the highest certified power level, the actual SAR level of the wifi while operating can be well below the maximum value. This is because the wifi is designed to operate at multiple power levels so as to use only the power required to reach the network. In general, the closer you are to a wireless base station antenna, the lower the power output. Before a wifi model is available for sale to the public, it must be tested and certified to the FCC that it does not exceed the limit established by the government adopted requirement for safe exposure. The tests are performed in positions and locations (e.g., at the ear and worn on the body) as required by the FCC for each model. The highest SAR value for this mobile wifi when worn on the body, as described in this user guide, is 0.258W/Kg(Body-worn measurements differ among wifi models, depending upon available accessories and FCC requirements). The maximum scaled SAR in hotspot mode is 0.258W/Kg. While there may be differences between the SAR levels of various wifis and at various positions, they all meet the government requirement for safe exposure. The FCC has granted an Equipment Authorization for this model wifi with all reported SAR levels evaluated as in compliance with the FCC RF exposure guidelines. SAR information on this model wifi is on file with the FCC and can be found under the

Display Grant section of <http://www.fcc.gov/oet/fccid> after searching on FCC ID: 2AG32R700A Additional information on Specific Absorption Rates (SAR) can be found on the Cellular Telecommunications Industry Association (CTIA) web-site at <http://www.wow-com.com>