
The Stelera C105

User
Manual

Contents

Chapter 1	Getting Started	3
Chapter 2	Connecting	8
Chapter 3	Settings	11
Chapter 4	Statistics & Information	13
Chapter 5	Q&A	155
Chapter 6	Important Safety Information and Glossary	18

The Stelera C105

Chapter 1

Getting Started



Chapter 1

What's in the box

1. Stelera C105:

Insert this into an ExpressCard Slot if available.



2. PCMCIA Adaptor Casing (optional):

Slide the C105 in this casing if a PCMCIA slot is available.



3. USB Accessories

- Stelera C105 USB Adaptor Casing:** Insert the C105 (1) into this case if no PCMCIA/ExpressCard slot is available and connect it to the PC with the USB Cable (3b).
- USB Cable:** Insert the small end into the Adaptor Casing (3a) and the two large ends into the PC. Two free USB ports are required for maximum signal strength. The gray port can be shared with a mouse or keyboard.
- Notebook Screen Hook:** Secures the C105 to a laptop computer screen.



Features

- Supports 2G, 3G and 3.5G standards
- USB, ExpressCard or PCMCIA Interface
- Windows Vista, XP and 2000 compatibility
- Does not interfere with other USB peripherals
- Six language interface (English, French, German, Italian, Spanish and Traditional Chinese)
- Plug & Play functionality
- Dual Antennas

Before You Install

Information

Before installing the C105, we recommend obtaining the following information from the SIM Card Mobile network operator:

Access Point Name (APN)

- For many carriers, the APN may simply be *Internet*.

Phone Number

- The Phone Number to dial to establish a network connection. Stelera software helps input this number correctly.

Insert SIM Card



1. Face the gold contact points toward each other.
2. Insert the SIM card into the slot.
3. Push the card in until it reaches the end of the arrow next to the slot.

Hardware Installation

With the SIM card properly inserted, the C105 may now be installed into the computer, which may be done via PCMCIA/ExpressCard Slot or USB port.



ExpressCard Slot

1. Slide the C105 into the slot (SIM card side down, LED side up).
2. The LED should light up when connection is established.

Chapter 1

PCMCIA Adaptor

1. Slide the C105 into the PCMCIA Adaptor (LED & Gold Strip Up, SIM Card Side Down) as far as possible.



2. With the same orientation (antenna side up), slide the C105-Adaptor unit into the PCMCIA slot.



3. The LED should light up when connection is established.

USB

1. Slide the C105 into the USB adaptor casing (USB adaptor label & C105 LED side up).



2. Insert the small USB plug into the adaptor casing. Insert the two large USB plugs into the computer.
3. The LED should light up when connection is established, though it may be obscured.



Software Installation

The process and appearance of certain software elements in Windows Vista will be somewhat different than in 2000/XP. These differences are minor and should not limit the functionality of the C105 in any way.

New Hardware Detection

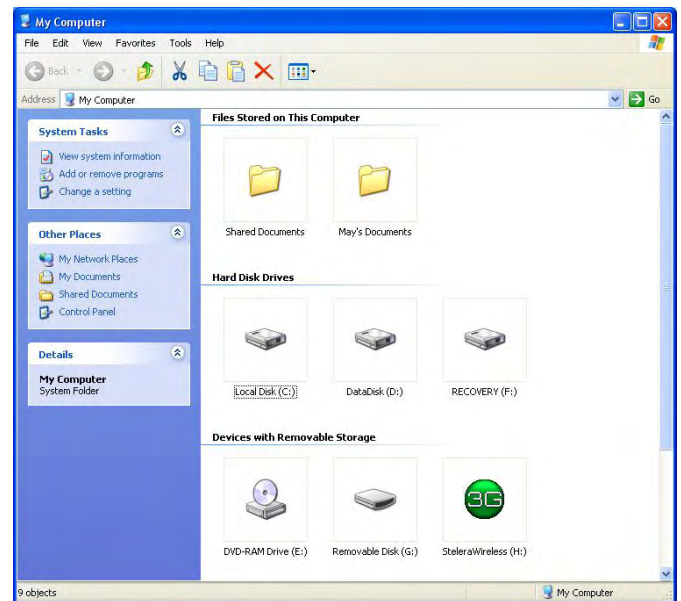
Windows 2000/XP

Once the C105 is connected, a dialog box should pop-up from the Toolbar Hardware Connection Icon. The device will be identified as the Stelera C105 3.5G HSDPA Utility.

Windows Vista

In Vista, a pop-up window may appear. Click **Allow** to proceed.

After the first pop-up, all other aspects for software installation will be identical in all compatible versions of Windows.

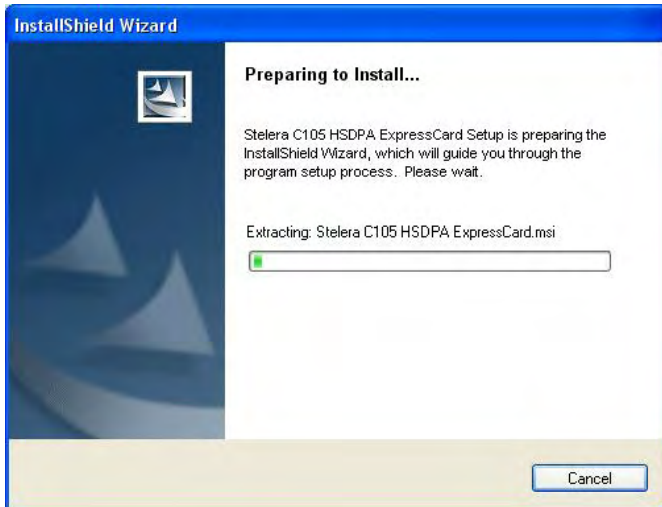


Software installation should proceed automatically. If it does not, it may be initiated from *My Computer*, where the C105 will be identified as a CD-ROM device. Sometimes a restart will occur during installation. If it does, reinitiate installation from *My Computer*.

Chapter 1

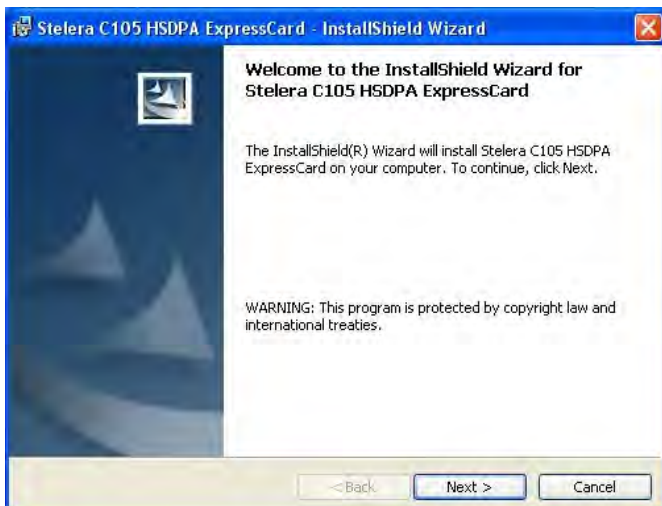
InstallShield Wizard

Preparation



The C105 will automatically use the appropriate language for your OS, if available.

Welcome



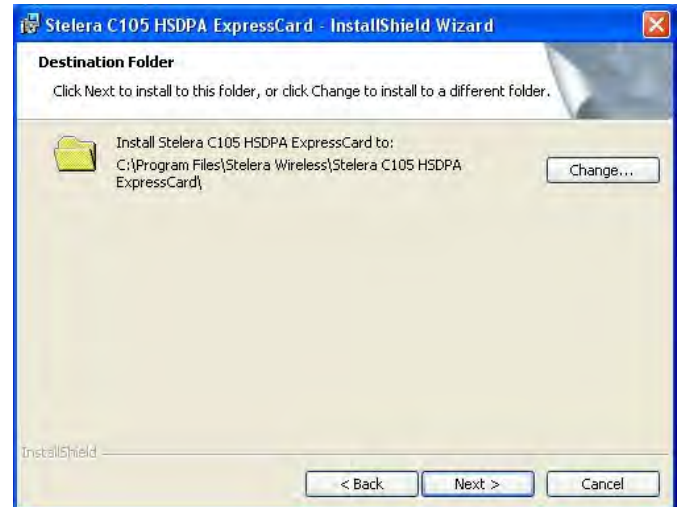
The Setup Wizard window opens automatically. The first page contains OS compatibility and legal disclaimers. Click **Next** to continue.

License Agreement



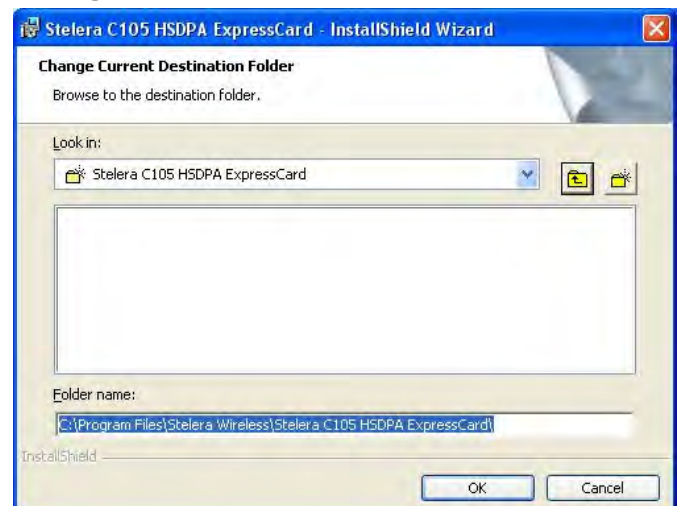
Click **I accept the terms in the license agreement** > **Next** to continue.

Select Installation Folder



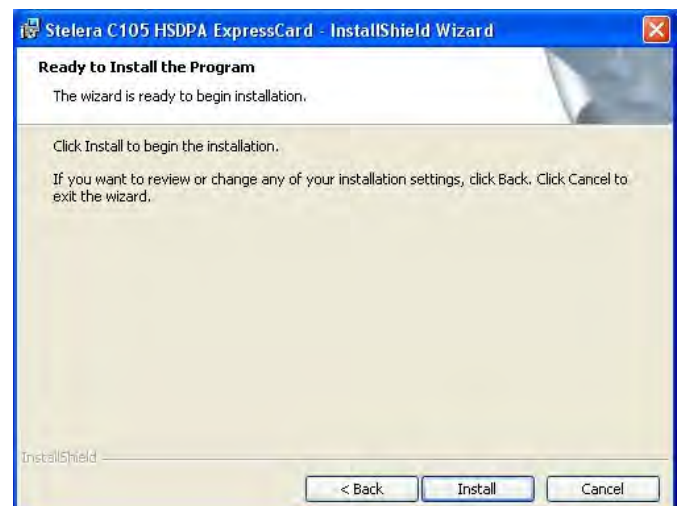
Click **Change** to manually select a folder.

Change Current Destination Folder



Highlight the folder and click **OK** to select it. Click **Cancel** to close the *Browse* window.

Confirm Installation

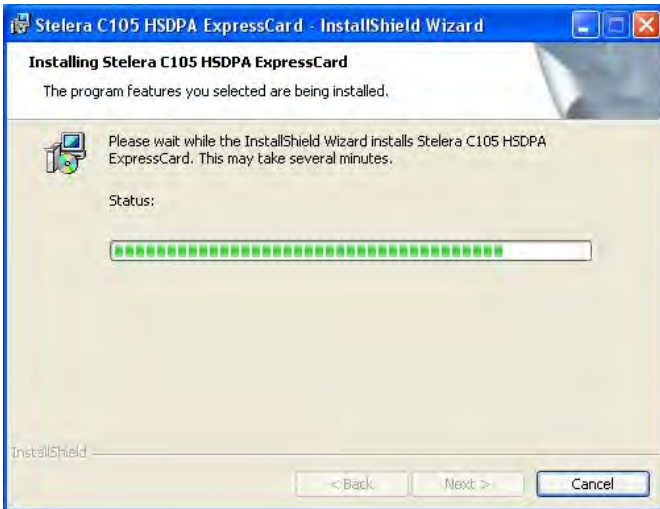


Click **Back** to change any preceding information or settings. Click

Chapter 1

Install to begin installation.

Installation



Installation time will vary, depending on the computer.

Home Screen

1. Signal Strength
2. Minimize
3. Radio Technology
4. Mobile Network Operator
5. Connection Status
6. Connection Time Elapse
7. Total Data Uploaded
8. Total Data Downloaded
9. Compose Message
10. Radio On/Off
11. Menu
12. Home Screen
13. Connect/Disconnect

Note: The Home screen only indicates 3G (internet) connection status. After installation, the C105 automatically initiates 2G (SMS) functions upon successful connection to the computer. Text messages can be sent or received, even if the Home screen indicates no connection.

Menu Screen

Setting: General, SMS, SIM, Radio and Network preferences.

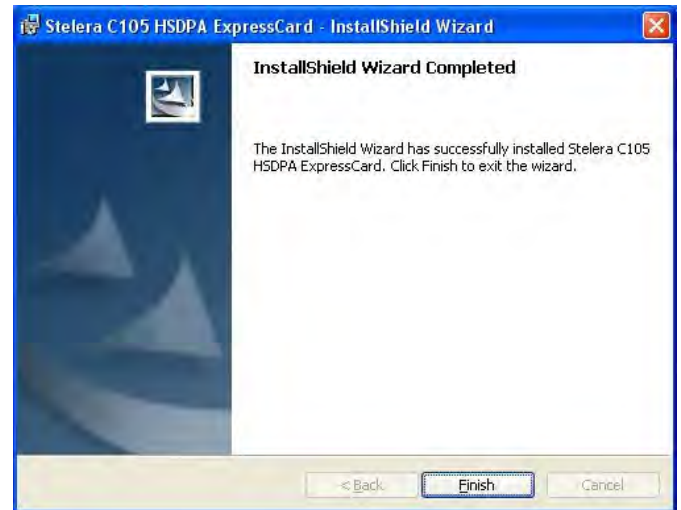
Statistics: Upload, Download graphs and totals.

Contacts: C105, SIM Card and Outlook Contact lists.

Profile: Connection profile setup/options.

Information: Device, Version and Signal specifics.

Installation Complete



When installation is complete, click **Finish** to exit. The Connection Manager will open automatically and bring up the Home Screen. The Quick Start Guide will also automatically open, but only if you have Adobe Acrobat 6.0+.



The Stelera C105

Chapter 2

Connecting




Chapter 2

Establishing a Connection

With the C105 fully installed, an online connection can now be made. The C105 will automatically scan your system and create a default profile, which should work in the vast majority of cases. To test it, simply click the Connect button.

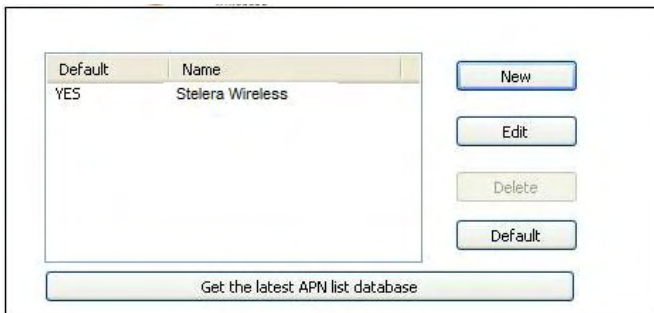


Connection should take about 5 seconds. When established, the Home screen should say Connected, with the onscreen clock running and the Download/Upload tallies running. The toolbar icon  will also change color to indicate the connection protocol (same as LED indicator). See Specifications for details.

If connection is unsuccessful, check that the device and SIM card are properly connected and inserted. If they are, a new internet profile may need to be created.

Create a Profile

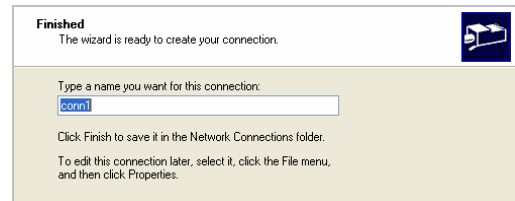
1. Click **Menu > Profile**. The profile menu will contain the C105 default profile, named *Stelera*.



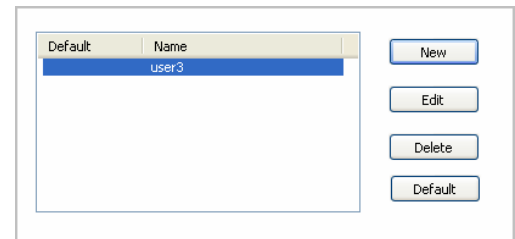
2. Click **New** to create a new profile. Depending on the carrier, all 4 spaces may not need to be filled to proceed.

3. Choose a *Profile Name*. The name is arbitrary and is helpful when different connection methods are available.
4. Inquire with the Mobile network operator (SIM carrier) as to whether the *User Name* and *Password* are required.
5. The *Password* can be any combination of letters, numbers or symbols and is case sensitive.
6. Enter the Access Point Name (*APN*), supplied by the SIM card carrier. With all required slots filled, click **Next**.

7. Enter the phone number for establishing the wireless connection, supplied by the SIM card carrier; click **Next**.



8. The *Finished* window is a double check of the *Profile Name*, which can be modified here. If profile settings need to be changed, click **Back**. If everything is fine, click **Finish**.



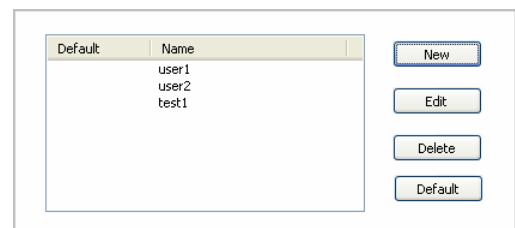
9. On the *Profile* window, click the newly created profile and then click **Default**. Click **OK** to set this profile as the default (only the default can be connected).
10. The Stelera C105 is now ready for a wireless connection. Click the **Connect** icon to establish it. Connection should take about 5 seconds. When established, the Home screen should say **Connected**, with the onscreen clock running and the **Download/Upload** tallies counting.

Note: If you switch to a different SIM card, the default profile will no longer be valid. You will have to create a new profile in the manner just described. If you do not have access to all the information necessary to create a new profile, uninstall and reinstall the Stelera software. The new default profile should work for the new SIM card.

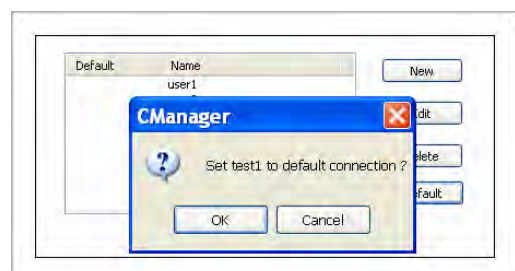
Choose a Profile

Different profiles may be needed, depending on current location.

1. Click **Menu > Profile**.

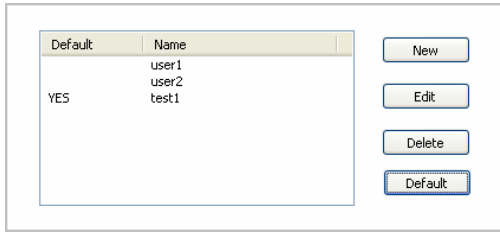


2. Highlight the desired profile and click **Default**.



Chapter 2

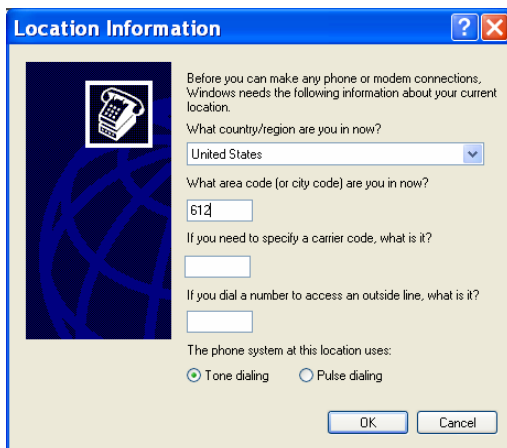
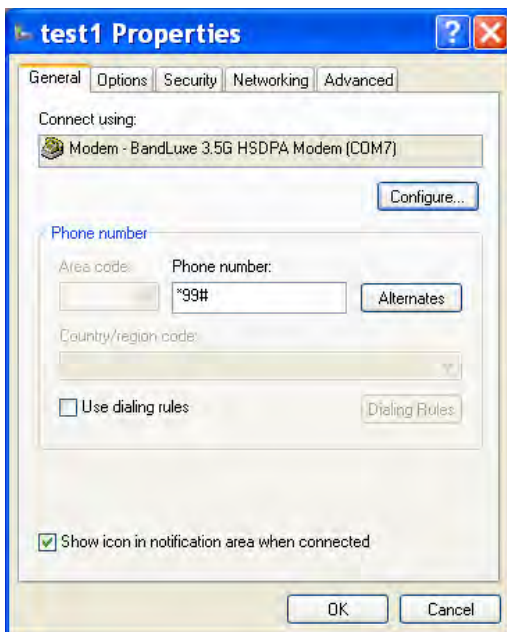
3. Click **OK** on the confirmation window if this is the desired profile.



4. The word **YES** will appear next to the default profile.

Profile Properties

Profiles can be fine tuned after creation. In the *Profile* window, simply click **Edit** to adjust the default profile. To adjust a non-default profile, highlight it and then click **Edit**. Click **Next** on the *Edit* window to view the *Properties* menu, *General* Tab.



General

Connect using

If other modems are available, they will be listed here. Click **Configure** to adjust the Stelera modem settings.

Phone number

Check **Use dialing rules** to access the *Location Information* window to add more specific dialing information such as **tone/pulse dialing**, **current region**, **area & carrier code**, and **outside line access number**.

Click **OK** when completed.

This and other *Properties* menu tabs are generic to the Windows OS and will not be discussed further.

Connecting & Disconnecting



If a default profile has been selected, a connection can be made or ended at any time by clicking the **Connect** button on the *Menu* screen. However, connection status will not be obvious unless the *Home* screen is displayed. The *Statistics* or *Signal Information* windows also clearly display connection status.

The Stelera C105

Chapter 3

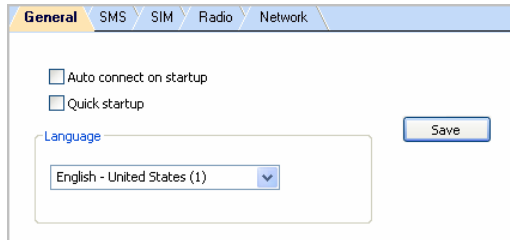
Settings



Chapter 3

General

Check *Auto connect on startup* to have the C105 connect to the internet automatically during startup. If speed is essential, clicking *Quick startup* will cause the auto startup to proceed even faster. However, if you plan to install the C105 onto multiple computers, disable the **Quick startup** function. Do not have the C105 connected to the computer when you turn it on when *Quick startup* is enabled.



Language

The Connection Manager offers English, French, German, Spanish, Italian and Traditional Chinese. To choose a language, click the menu and highlight & select a language. Click **Save** to implement the chosen language. The Connection Manager will then return to the Home Screen with the chosen language.

Radio

Dual Mode- Features various network search options. Note that 3G (including 3.5G) *First* is the default setting.

Frequency Band

Save network scanning time by eliminating unnecessary frequencies or choose *Worldwide* if local standards are uncertain.

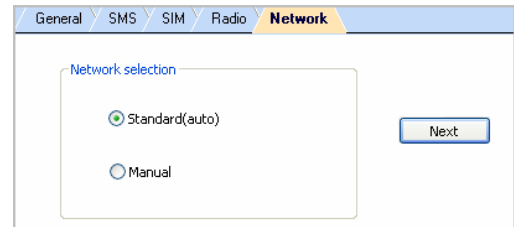


After making changes to either, click **Apply**.

Network

Network Selection

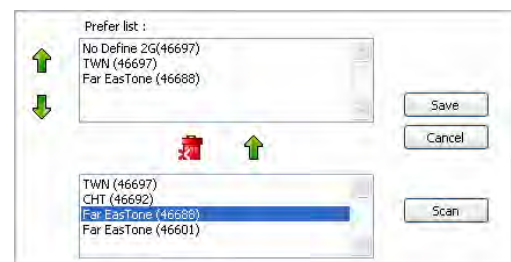
Standard (auto) Search for networks in the order specified in the *Prefer* list. Click **Standard (auto) > Next** to view and adjust the *Prefer* list.



The top list is the *Prefer* list; the bottom lists all available networks. Click **Scan** to bring up the list of all available networks.

In the *Prefer* list, highlight a network and click the up arrow to the left to move it up the list (increase its preference); clicking the down arrow does the opposite. Clicking the red icon removes the highlighted network from the *Prefer* list.

In the bottom list, highlight a network and click the up arrow above to move that network to the *Prefer* list.

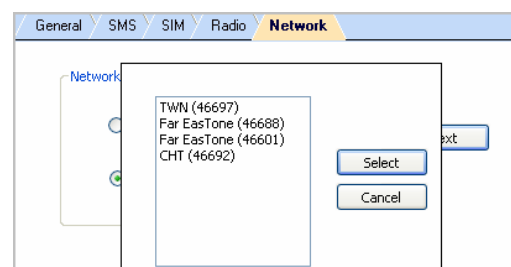


If changes are made, click **Save**.

Manual

Choose a network from all available. Click **Manual > Next** to see the list. Highlight a network and click **Select**. If no change is needed, click **Cancel**.

Note that **Network** can only be accessed when the C105 is not connected to a network.



The Stelera C105

Chapter 4

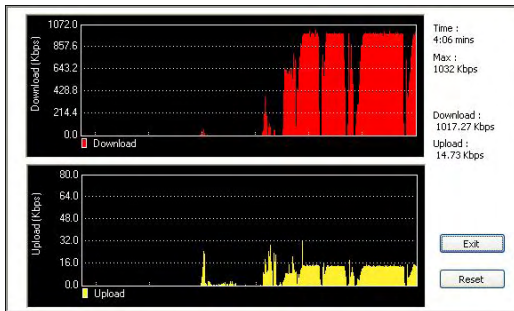
Statistics & Information



Chapter 4

Statistics

The *Statistics* screen displays a graph of recent upload and download activity. If there is no data, the C105 is offline. Click **Menu > Statistics**.



Time: Elapsed Connection Time

- Returns to zero upon disconnection
- Reset does not affect it

Max: Maximum Throughput

Download: Current Downloading Throughput

Upload: Current Uploading Throughput

Click **Reset** to end the current graphs and start over. This will not affect the actual connection. To leave this window, click **Exit**.

Information

The *Information* screen offers version or signal specifications. Click **Menu > Information**.

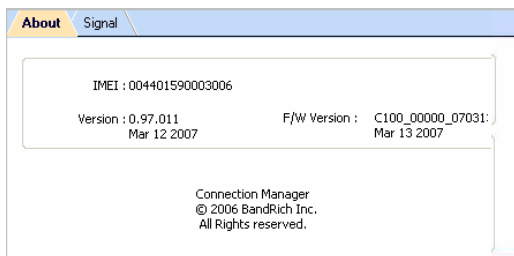
About

Click **Menu > Information > About** tab to see version data.

IMEI: International Mobile Equipment Identity number

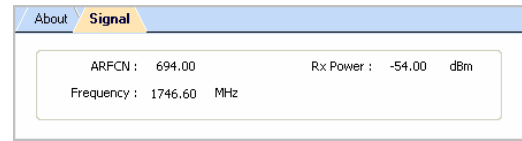
Version: Connection Manager Software Version

F/W Version: Firmware Version

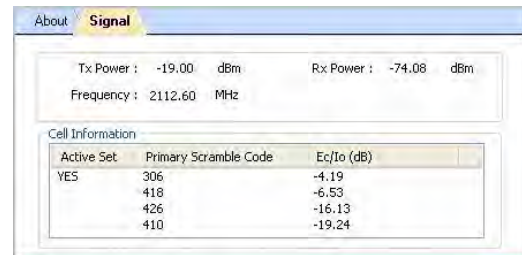


Signal

Click the **Signal** tab to see signal data. The bottom half of the screen will be empty when there is no connection or during a 2G connection. Displayed indicators will vary, depending on your protocol.



Connected (2G)



Connected (3G)

ARFCN: See *Glossary*

Tx & Rx Power: Transmission/Reception strength, in decibel meters (dBm)

Frequency: In MHz

Active Set: UMTS cell actually transmitting data, marked YES

Primary Scramble Code: Individual UMTS cell ID code

Ec/Io: Reception/Interference (S/N), Connected (3G) in decibels (dB)

The Stelera C105

Chapter 5

Q&A



Chapter 5

Q: I am trying to install the C105 onto another computer, but the software installation window is not opening, nor is there an icon in *My Computer*, what do I do?

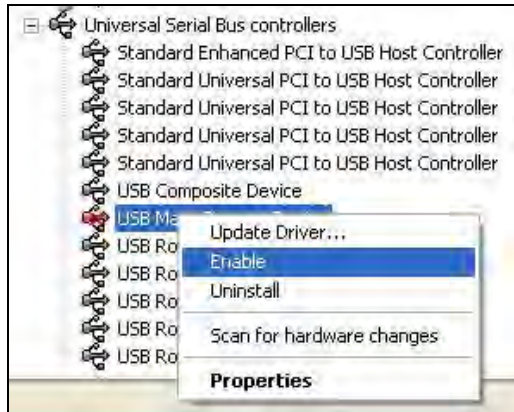
A: *Quick startup* has already been enabled on a different computer. Reconnect the C105 to that computer and disable this function. There are two ways to do this.

1. Click **Menu > Setting > General** tab. Uncheck *Quick startup* and click **Save**. See *Chapter 4* for more information.
2. This method varies depending on the OS.

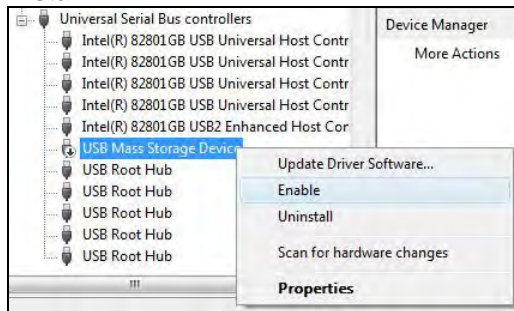
Vista / XP

- a. Right-click on *My Computer > Manage > Universal Series Bus controllers*. Right-click **USB Mass Storage Device** and choose **Enable**. The C105 should now appear as a CDROM USB Device.

XP



Vista



b-1 (XP): The InstallShield Wizard should start running automatically. If it does not, click on the Stelera icon in *My Computer*. The software will reload as seen in *Chapter 1*.

b-2 (Vista): Shortly after enabling the C105, an AutoPlay window may pop-up. Choose AUTORUN_C105.EXE

Q: Why does the Home screen display *No Device*?



A: Make sure that the C105 is plugged in/inserted correctly. If it is, and *No Device* is still displayed, check the LED.

If the LED is not lit, the problem could be:

- The USB cord or adapter casing is not functioning (if applicable).
- The C105 is not slid correctly into the adapter casing.
- The USB port or PCMCIA/ExpressCard Slot is not active. Check the *Device Manager*.

Q: The Home screen is stuck on *Initial SIM Card*, what do I do?

A: Replug/reconnect the C105. If this does not work, restart the computer. If this does not work, check the SIM card, which may have a poor connection or be locked.

Q: Why does the C105 need 2 USB ports?

A: This is necessary to supply sufficient power to transmit during peak loads and to avoid dropped calls.

Q: The SIM card is working, so why can't the C105 make a connection?



A: Check the profile information; click **Menu > Profile**. See *Chapter 2* for details.

If profile settings are in order, the radio or network settings may need adjustment. Click **Menu > Setting**. See *Chapter 4* for details. If *Radio* and *Network settings* are in order, please check the signal strength indicator in the upper left corner of the Connection Manager.

Q: How do I import contacts into the Connection Manager?

A: Click **Menu > Contacts >**

- Import from the SIM Card.
- Import from Outlook.
- Import from the C105 Contacts folder.

Chapter 5

Q: Can I use the Connection Manager on an airplane?

A: Yes, you can simply unplug the C105. This will allow you to compose messages, adjust most settings, or perform other Connection Manager functions. However, removing the SIM card, while keeping the C105 plugged in, is not the same as unplugging it. Removing the SIM card will cause the Connection Manager software to close after a few moments.

You may also keep the C105 plugged in, but in Flight Mode. Click the Connection Manager RF icon; if the X is on, the radio is off and the C105 is safe for in-flight use.



The words *Flight Mode* will also appear on the Home Screen.

Q: My OS is Microsoft 2000 SP4, so why is software installation still not working?

A: Two more Microsoft HotFix downloads are needed:

1. KB893803: Windows Install 3.1

<http://www.microsoft.com/downloads/details.aspx?FamilyID=889482fc-5f56-4a38-b838-de776fd4138c&displaylang=en&Hash=PAFe2q2M7AKWEGBcm62PeiJS4ViwKMUiwH7KOHOV4d4P8gXcVDuwnXID19LT%2bqx85W4mPHaGPwG4ne6KUKaD3Q%3d%3d#filelist>

2. KB842773: Windows 2000 HotFix (Update for BITS 2.0 and WinHTTP 5.1)

<http://www.microsoft.com/downloads/details.aspx?FamilyID=3ee866a0-3a09-4fdf-8bdb-c906850ab9f2&DisplayLang=en>

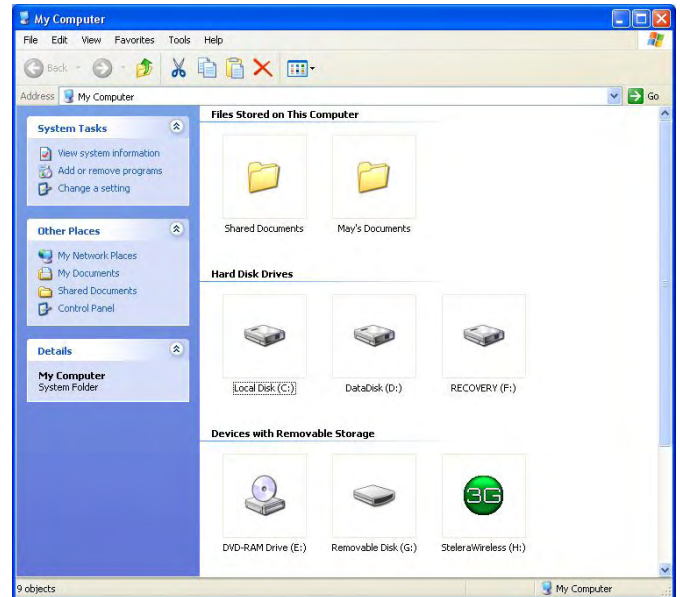
Q: The InstallShield Wizard does not automatically open when I first plug in the C105, what do I do?

A: In *My Computer*, right click on the drive with the Connection Manager icon and select AutoPlay. This should initiate the InstallShield Wizard.

 STELERA C105(H:)

Q: My computer cannot boot with the C105 connected. Why?

A: As discussed in Chapter 1, during installation the C105 is displayed in *My Computer* as a portable storage device.

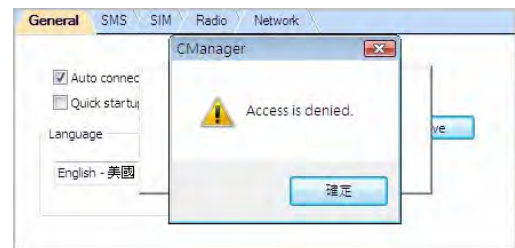


The computer treats the C105 as if it were a CD drive. Because of this, your computer may be trying to boot from it, as if it were expecting a Boot CD. Disconnect the C105 before booting.

Q: How do I view the .pdf Quick Start Guide and User Manual?

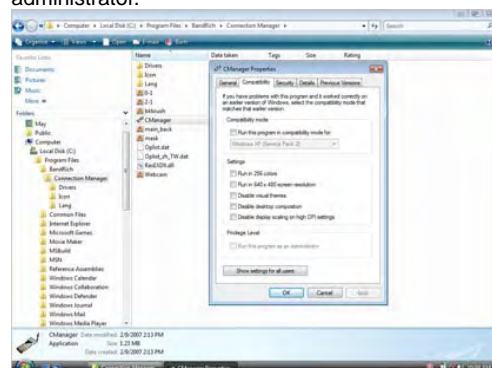
A: Click **Start > Programs > Stelera > Stelera C105 3.5G HSDPA** utility and choose either document, both of which require Adobe Acrobat 6.0.

Q: The Connection Manager is having troubles running on Vista. What do I do?



A: You may be having a problem with Vista's user control functions.

1. Open the Connection Manager folder.
2. Right click **CManager.exe > Properties > Compatibility** tab.
3. Check Run this program as an administrator.



4. Click **Apply > OK**.

The Stelera C105

Chapter 6

Important Safety Information and Glossary



Chapter 6

Safety Information

Important Notice

Due to the transmission and reception properties of cellular communications, data can occasionally be lost or delayed. This can be due to the variation in radio signal strength that results from changes in the characteristics of the radio transmission path.

Although data loss is rare, the environment where you operate the C105 may adversely affect communications. Variations in radio signal strength are referred to as fading. Fading is caused by several different factors including signal reflection, the ionosphere, and interference from other radio channels.

BandRich Inc. or its partners will not be held responsible for damages of any kind resulting from the delays or errors in data transmitted or received by the Stelera C105, or failure of the Stelera C105 to transmit or receive such data.

Stelera™ is a registered trademark of BandRich Inc.

Potential Hazards

Do not operate the Stelera C105 in an environment that may be susceptible to radio interference resulting in danger; specifically:

Areas where prohibited by the law.

- Follow any special rules and regulations and obey all signs and notices. Always turn off the host device and remove the C105 from the card slot when instructed to do so, or when you suspect that it may cause interference or danger.

Where explosive atmospheres may be present.

- Do not operate your C105 in any area where a potentially explosive atmosphere may exist. Sparks in such areas could cause an explosion or fire resulting in bodily injury or even death. Be aware and comply with all signs and instructions.
- Users are advised not to operate the C105 while at a refueling point or service station. Users are reminded to observe restrictions on the use of radio equipment in fuel depots (fuel storage and distribution areas), chemical plants or where blasting operations are in progress.
- Areas with a potentially explosive atmosphere are often but not always clearly marked. Potential locations can include gas stations, below deck on boats, chemical transfer or storage facilities, vehicles using liquefied petroleum gas (such as propane or butane), areas where the air contains chemicals or particles, such as grain, dust or metal powders, and any other area where you would normally be advised to turn off your vehicle engine.

Near Medical and life support equipment.

- Do not operate your C105 in any area where medical equipment, life support equipment, or near any equipment that may be susceptible to any form of radio interference. In such areas, the host communications device must be turned off. The C105 may transmit signals that could interfere with this equipment.

On an aircraft, either on the ground or airborne.

- In addition to FAA requirements, many airline regulations state that you must suspend wireless operations before boarding an airplane. Please ensure that the host device is turned off and your C105 is removed from the card slot prior to boarding aircraft in order to comply with these regulations. The C105 can transmit signals that could interfere with various onboard systems and controls.

While operating a vehicle.

- The driver or mobile network operator of any vehicle should not operate a wireless data device while in control of a vehicle. Doing so will detract from the driver or mobile network operator's control and operation of that vehicle. In some countries, operating such communications devices while in control of a vehicle is an offense.

Regulations

CE Marking

This device has been tested to and conforms to the regulatory requirements of the European Union and has attained CE Marking. The CE Mark is a conformity marking consisting of the letters "CE". The CE Mark applies to products regulated by certain European health, safety and environmental protection legislation. The CE Mark is obligatory for products it applies to: the manufacturer affixes the marking in order to be allowed to sell his product in the European market.

This product conforms to the essential requirements of the R&TTE directive 1999/5/EC in order to attain CE Marking. A notified body has determined that this device has properly demonstrated that the requirements of the directive have been met and has issued a favorable certificate of expert opinion. As such the device will bear the notified body number 0678 after the CE mark.

The CE Marking is not a quality mark. Foremost, it refers to the safety rather than to the quality of a product. Secondly, CE Marking is mandatory for the product it applies to, whereas most quality markings are voluntary.

Marking: The product shall bear the CE mark, the notified body number(s) as depicted to the right. CE 0678.

15.21 Federal Communications Commission (FCC) Statement

You are cautioned that changes or modifications not expressly approved by the part responsible for compliance could void the user's authority to operate the equipment.

15.105(b) Federal Communications Commission (FCC) Statement

This equipment has been tested and found to comply with the limits for a Class B digital device, pursuant to part 15 of the FCC rules. These limits are designed to provide reasonable protection against harmful interference in a residential installation. This equipment generates, uses and can radiate radio frequency energy and, if not installed and used in accordance with the instructions, may cause harmful interference to radio communications. However, there is no guarantee that interference will not occur in a particular installation. If this equipment does cause harmful interference to radio or television reception, which can be determined by turning the equipment off and on, the user is encouraged to try to correct the interference by one or more of the following measures:

- Reorient or relocate the receiving antenna.
- Increase the separation between the equipment and receiver.
- Connect the equipment into an outlet on a circuit different from that to which the receiver is connected.
- Consult the dealer or an experienced radio/TV technician for help.

You are cautioned that changes or modifications not expressly approved by the party responsible for compliance could void your authority to operate the equipment.

THIS DEVICE COMPLIES WITH PART 15 OF THE FCC RULES. OPERATION IS SUBJECT TO THE FOLLOWING TWO CONDITIONS:

- (1) THIS DEVICE MAY NOT CAUSE HARMFUL INTERFERENCE, AND
- (2) THIS DEVICE MUST ACCEPT ANY INTERFERENCE RECEIVED, INCLUDING INTERFERENCE THAT MAY CAUSE UNDESIRE OPERATION.

Chapter 6

FCC RF Radiation Exposure Statement:

1. This Transmitter must not be co-located or operating in conjunction with any other antenna or transmitter.
2. This equipment complies with FCC RF radiation exposure limits set forth for an uncontrolled environment. This equipment should be installed and operated with a minimum distance of 20 centimeters between the radiator and your body.

Guidelines when used either in the normal use position against the ear or when positioned at least 1.5 cm away from the body. When a carry case, belt clip or holder is used for bodyworn operation, it should not contain metal and should position the product at least 1.5 cm away from your body. In order to transmit data files or messages, this device requires a quality connection to the network. In some cases, transmission of data files or messages may be delayed until such a connection is available. Ensure the above separation distance instructions are followed until the transmission is completed. The highest SAR value for this device when tested for use at the body is 1.56 W/kg.

Specifications

System Requirements



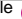

Operating System: Windows 2000 SP4+, XP SP2+ or Vista

Hard Drive Space: 30 MB

Web Browser: Internet Explorer 6.0+

Interface: ExpressCard slot, 2 USB ports or PCMCIA slot

LED Indicators

Color	Indicator	Flashing	Solid
Off	Not Connected/ Flight Mode	NA	NA
Red 	SIM Card/Service	No coverage/ still searching	Error (SIM card missing, failed verification)
Green 	WCDMA	Available	Connected
Blue 	HSDPA	NA	Connected
Pink/Purple 	GPRS/EDGE	Available	Connected

Hardware

Dimensions: 119.6 x 42 x 11.3mm (LWH, including antenna)

Weight: 40g

Onboard Memory: 64 MB NAND Flash & 64 MB SDRAM

GSM Bands: 850, 900, 1800, 1900

UMTS Bands: 850, 1900, 2100

Connectivity

Internet: DUN

Data Speed (HSDPA) in bps: Downlink: 7.2Mbps/3.6Mbps/1.8Mbps/
384Kbps

Uplink: 384Kbps (Max)

Radio/Band Selection: 3/3.5G: EU+Asia (2100), US (850/1900)

2G: EU+Asia (900/1800), US (850/1900)

IP Settings: APN, DNS, DHCP vs. Static, Radius

Glossary

2G: Second-generation mobile networking technology. Represents a switchover from analog to digital; most 2G networks use GSM.

3G: Third-generation mobile networking technology that enables simultaneous transfer of voice and non-voice data; most 3G networks use WCDMA.

3.5G: A more recent standard of mobile networking technology; generally uses HSDPA.

APN (Access Point Name/Network): Provides GPRS routing information. Consists of:

Network ID: Identifies the external service requested by a GPRS user.

Mobile network operator ID: Specifies routing information.

ARFCN (Absolute Radio Frequency Channel Number): The specific ID numbers for all radio channels used in cellular mobile communications.

Bps (bits per second): How data flow is measured.

DNS (Domain Name System): Helps route network traffic by making the addressing process more user-friendly.

DHCP (Dynamic Host Configuration Protocol): How devices obtain IP addresses from a server.

DUN (Dial-Up Network): Windows component that enables online access via a modem.

EDGE (Enhanced Data GSM Environment/Enhanced Data for Global Evolution): Advanced GPRS that delivers multimedia and other data needing greater bandwidth at up to 237 kbps.

GPRS (General Packet Radio Service): Delivers data in packets at up to 86 kbps.

GSM (Global System for Mobile Communications): The most popular cellular network, mostly operates in 850-900 or 1800-1900 MHz; the primary 2G system.

IMEI (International Mobile Equipment Identity): A number unique to each GSM/UMTS device that can be used block network access by a stolen mobile device.

IP (Internet Protocol): Routes packets over a network.

HSDPA (High Speed Downlink Packet Access): Advanced WCDMA that delivers bandwidth intensive data at up to 7.2Mbps; typically associated with 3.5G.

Kbps (Kilobits per second): A data flow measure; 1024 bits/second.

LAN (Local Area Network): A data network with limited range but good bandwidth.

Mbps (Megabits per second): A data flow measure; 1,048,576 bits/second.

PPP (Point-to-Point Protocol): An internet connection method.

PIN (Personal Identity Number): Four to eight digit numbers SIM card security code; allows access to the carrier's network.

Rx: Shorthand for *Reception*.

SIM (Subscriber Identity Module): A small card that contains key mobile device identification, subscription and contact information.

Tx: Shorthand for *Transmission*.

WCDMA (Wideband Code Division Multiple Access): Advanced EDGE that supports 384kbps data flow. Most 3G networks use this standard; aka UMTS.