



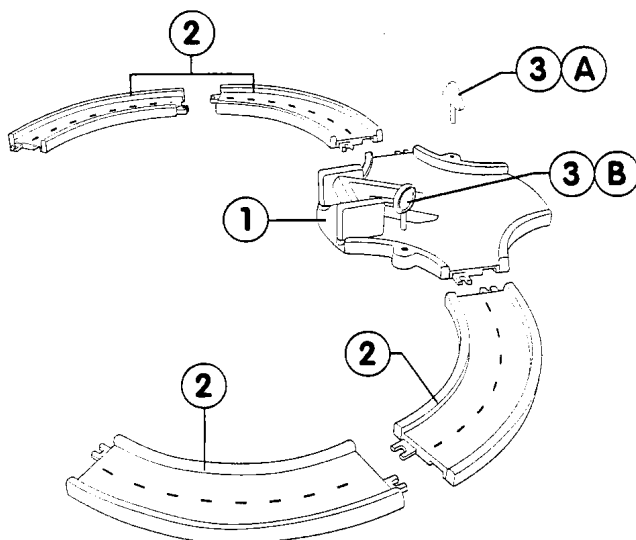
Radio Control Garage

This toy is to be assembled by
an adult. Assembly instructions.

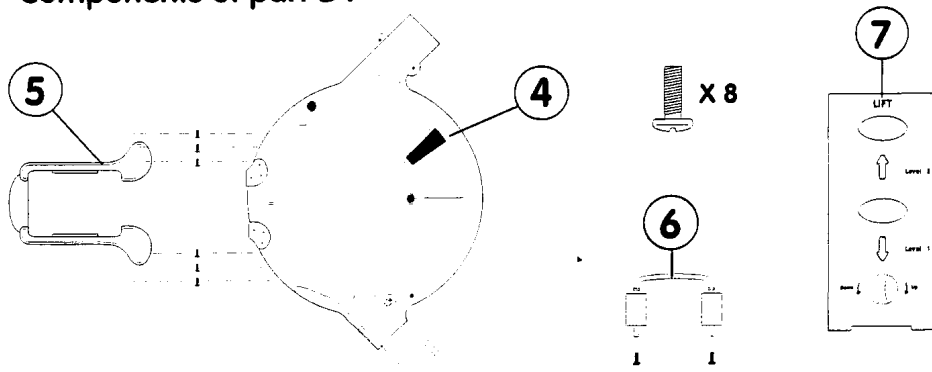


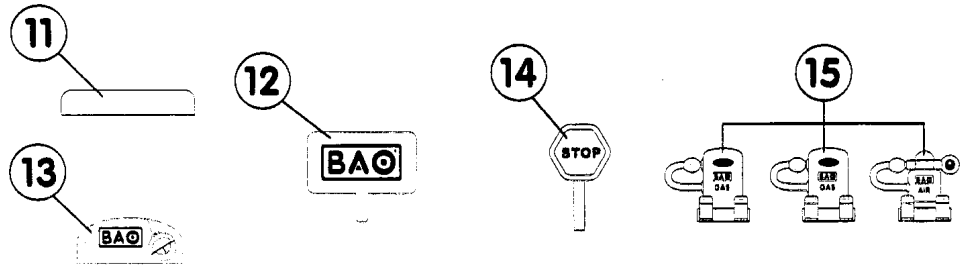
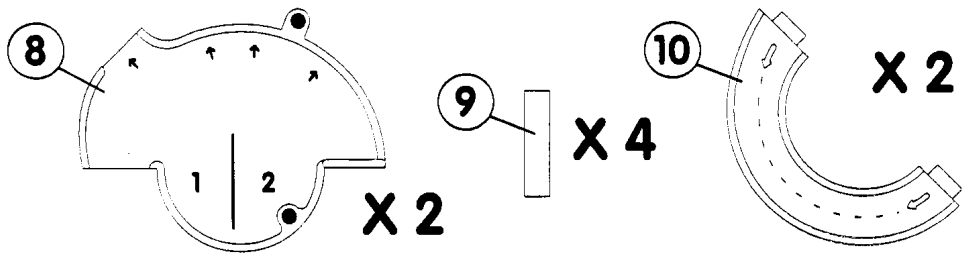
Ref: 8213

Part A :

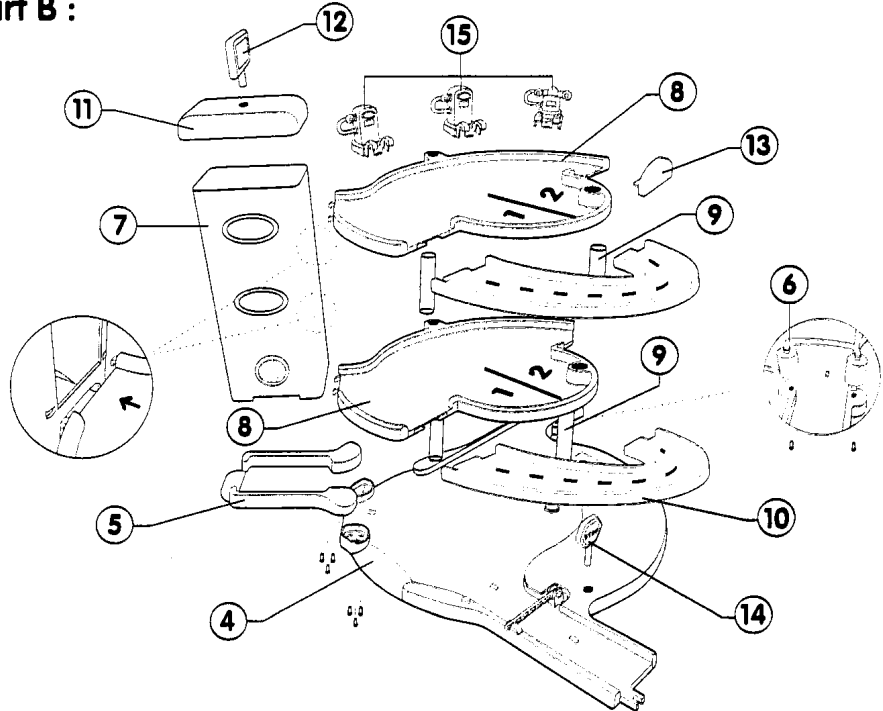


Components of part B :





Part B :



HOW TO ASSEMBLE THE TOY :

- There are two parts to assemble: Part A and part B (page 1).

PART A :

- Clip 2 tracks ② together.
- Clip the other 2 tracks ② together.
- Clip the tracks ② onto the "cross" ① .

PART B :

- Fit & screw the part ⑤ onto part ④ (6 screws).
 - Insert the "lift tower" ⑦ into the rectangle hole of the base ⑤ .
 - Fit & screw the car wash ⑥ into the 2 holes of the base ④ (2 screws).
 - Insert 2 pieces of tube ⑨ into the 2 holes of the base ④ .
 - Insert the 1st level ⑧ onto the 2 tubes ⑨ & inside the 2 lower holes of the " lift tower" ⑦ .
 - Insert 2 pieces of tube ⑨ into the 2 holes of the 1st level ⑧ .
 - Insert the 2nd level ⑧ onto the 2 tubes ⑨ & inside the 2 upper holes of the "lift tower" ⑦ .
 - Now clip & install the curved track ⑩ to connect the base ④ to the 1st level ⑧ .
 - Do the same between 1st level & 2nd level.
 - Insert the part ⑬ onto the 2nd level ⑧ (see drawing).
 - Insert the BAO logo ⑫ into the hole of the lift roof ⑪ .
 - Insert the roof ⑪ on top of the lift ⑦ .
 - Clip the 3 accessories ⑮ anywhere on the edge of the 1st level or 2nd level.
 - Now connect the tracks ② of part A to the base ④ of part B.
- The garage is now fully assembled.



BATTERIES:

- There are 3 battery compartments : – base of garage
 - remote control
 - car

BASE :

- The battery compartment is located underneath the base ④ . Use a cruciform screwdriver to open the cover and install 2 new AA (UM-3 / LR6) batteries.
- Close the cover and put the screwdriver away in a safe place.

REMOTE CONTROL :

- The battery compartment is located at the back of the remote. Use a cruciform screwdriver to open the cover and install 1 new 9V (6F22-UE) battery.
- Close the cover and put the screwdriver away in a safe place.

CAR :

- The battery compartment is located underneath the car. Use a cruciform screwdriver to open the cover and install 2 new AAA (LR03) batteries.
- Close the cover and put the screwdriver away in a safe place.

INSTRUCTIONS :

- Batteries should be installed and changed by an adult.
- Open the battery compartment with a screw-driver.
- Make sure the batteries are installed in the right direction according to the diagram. A wrong position can damage the toy, provoke fire or the explosion of the batteries.



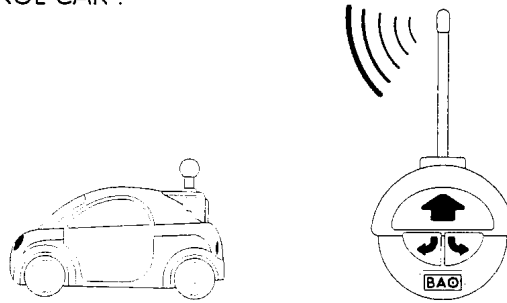
- Close the lid of the battery compartment.
- Always change all the batteries. Do not mix used and new batteries.
- Do not store batteries with metal objects: fire or explosion hazard.
- Remove batteries when the toy is not used for a long period of time.
- Do not throw batteries in a fire.
- Do not attempt to recharge batteries which are not rechargeable.
- Do not attempt to open batteries or rechargeable batteries.
- In case a battery is swallowed consult immediately a doctor or a poison center.
- If available get rid of your used batteries through a collection center.
- Use preferably alkaline batteries.
- Never let button-cell batteries in reach of young children.
- Rechargeable batteries are only to be charged under adult supervision.
- Rechargeable batteries are to be removed from the toy before being charged.
- Only batteries of the same or equivalent type as recommended are to be used.
- Used batteries should be removed from the toy.
The supply terminals are not to be short-circuited.
- Different types of batteries or new and used batteries should not be mixed.
- In case of malfunction, open the battery compartment, remove the batteries, re-install them and close the battery compartment.




HOW TO PLAY :

- The electronic garage has 4 electronic sounds & a radio-control car.



RADIO-CONTROL CAR :



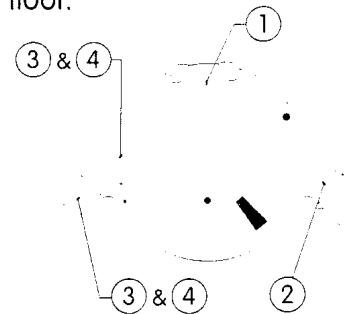
- Check if you have placed all the batteries in the remote and the car.
- Switch "ON" the car : slide the switch to "ON" position.
- To drive the car forward, press the button .
- To reverse left, press the button .
- To reverse right, press the button .

Remark :

- The car can be driven within the garage and may leave the track through the exits and operate on the open floor.

ELECTRONIC SWITCHES :

- The base has 4 electronic switches :
 - Lift sound effect ①
 - Car wash sound effect ②
 - Brake sound effect ③
 - Acceleration sound effect ④



- When the car passes the switches it will trigger automatically the sound effects.

Remark :

- The sound of brake ③ and of acceleration ④ are in sequence activated by the direction of the car.



FCC ID: PQE8213 Users Manual

This device complies with Part 15 of the FCC Rules. Operation is subject to the following two conditions: (1) this device may not cause harmful interference, and (2) this device must accept any interference received, including interference that may cause undesired operation.

Warning: Changes or modifications to this unit not expressly approved by the party responsible for compliance could void the user's authority to operate the equipment.

NOTE: This equipment has been tested and found to comply with the limits for a Class B digital device, pursuant to Part 15 of the FCC Rules. These limits are designed to provide reasonable protection against harmful interference in a residential installation. This equipment generates, uses and can radiate radio frequency energy and, if not installed and used in accordance with the instructions, may cause harmful interference to radio communications.

However, there is no guarantee that interference will not occur in a particular installation. If this equipment does cause harmful interference to radio or television reception, which can be determined by turning the equipment off and on, the user is encouraged to try to correct the interference by one or more of the following measures:

- ☐ Reorient or relocate the receiving antenna.
- ☐ Increase the separation between the equipment and receiver.
- ☐ Connect the equipment into an outlet on a circuit different from that to which the receiver is needed.
- ☐ Consult the dealer or an experienced radio/TV technician for help.