

PLAYBULB

zoocoro

 APP
control
SPEAKER LAMP

Manual

CONTENTS 目录

PLAYBULB

ZOOCORO

PRODUCT STORY 产品故事	02
MEMBER INTRODUCTION 家庭成员	03-13
TECHNICAL SPECIFICATION (EN) 技术规格 (英文)	15
TECHNICAL SPECIFICATION (CHINESE) 技术规格 (中文)	16
SPECIFICATIONS 规格	17
START GUIDE 启动指南	18-23
BLUETOOTH SPEAKER CONNECTION 蓝牙音箱连接	24-27
PLAYBULB X APPLICATION CONTROL PLAYBULB X 应用程序控制	28-41
TAP SETTING 拍拍设置	45-50
SAFETY INFORMATION (EN) 安全信息 (英文)	51
SAFETY INFORMATION (CHINESE) 安全信息 (中文)	52
WARRANTY CARD (EN) 保修卡 (英文)	53
WARRANTY CARD (CHINESE) 保修卡 (中文)	54
DOWNLOAD OTHER LANGUAGES 其他语言说明下载	55

THE BIRTH OF ZOOCORO
zoocoro的诞生

ZOOCORO

EN:

Zoocoro, the latest series of smart Bluetooth speaker lamp, is a perfect combination of design, technology and sound quality. Themed with animals and made of soft vinyl, it is suitable for users of any age. The main members of Zoocoro are Bunny, Duck, Piggy, Airwhale and Bear. Zoocoro combines smart lighting and audio in a fun design, perfect for any bedroom.

中文:

动物合唱乐园Zoocoro是最新设计的一套智能蓝牙音箱灯，将设计、技术、灯光和音质完美兼容，产品外观以动物为主题，材质选用安全的软性搪胶，任何年龄的用户都适用。Zoocoro主要团员有：Bunny、Duck、Piggy、Airwhale 和 Bear，这些都是相对受小孩和女性喜爱的卡通形象。它们不仅仅可以把小孩天马行空的幻想带到现实生活，更给了成年消费者一种全新体验的智能蓝牙音箱灯。

THE FAMILY

家庭成员

PLAYBULB
zoocoro



zoocoro 04

姓名 / NAME : Bunny
身高 / HEIGHT: 208mm
宽度 / WIDTH : 134mm
长度 / LENGTH: 147mm



PLAYBULB
zoocoro



zoocoro 06

姓名 / NAME : Duck
身高 / HEIGHT: 152mm
宽度 / WIDTH : 175mm
长度 / LENGTH: 141mm

PLAYBULB
ZOOCORO



ZOOCORO 07

PLAYBULB
zoocoro



zoocoro 08

姓名 / NAME : Piggy
身高 / HEIGHT: 118mm
宽度 / WIDTH : 131mm
长度 / LENGTH: 160mm

PLAYBULB
zoocoro



PLAYBULB
zoocoro



姓名 / NAME : Airwhale
身高 / HEIGHT: 114.83mm
宽度 / WIDTH : 175.29mm
长度 / LENGTH: 162.55mm

PLAYBULB
ZOOCORO



PLAYBULB
zoocoro

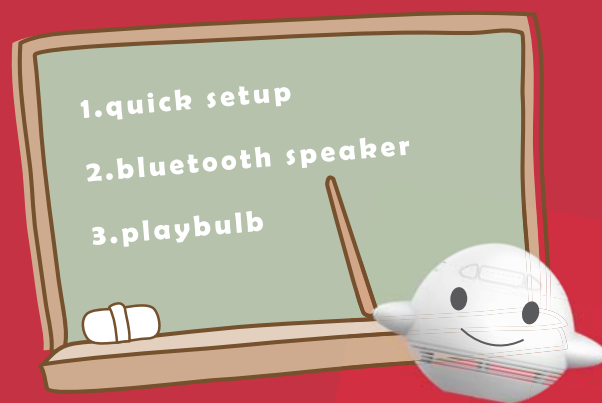


姓名 / NAME : Bear
身高 / HEIGHT: 113.8mm
宽度 / WIDTH : 140mm
长度 / LENGTH: 158mm

PLAYBULB
zoocoro



PLAYBULB
zoocoro



LET'S INTRODUCE HOW TO USE ZOOCORO
REPRESENTED BY AIRWHALE

下面让我们以airwhale为代表来为大家说明介绍

TECHNICAL SPECIFICATION

PLAYBULB

zoocoro

1. Operating voltage: 3.0-4.2V
 2. Amplifier power: 1*3W
 3. Impedance : 4 ohm
 4. Frequency response : 20HZ~20KHZ
 5. SN: more than 80dB
 6. Distortion: less than 10%
 7. Wireless range: up to 10 meters/33FT
 8. Wireless input: 5V500mA, battery charging: 4.2V300mA
 9. Charging time: 3-4 hours
 10. LED lighting time: 4 hours, music playback time: 3 hours
 11. WRGB: LED x4, warm white LED x 4 (0.4W)
- CRI: ≥ 80
Color temperature: 2700-3200K WRGB 0.4W

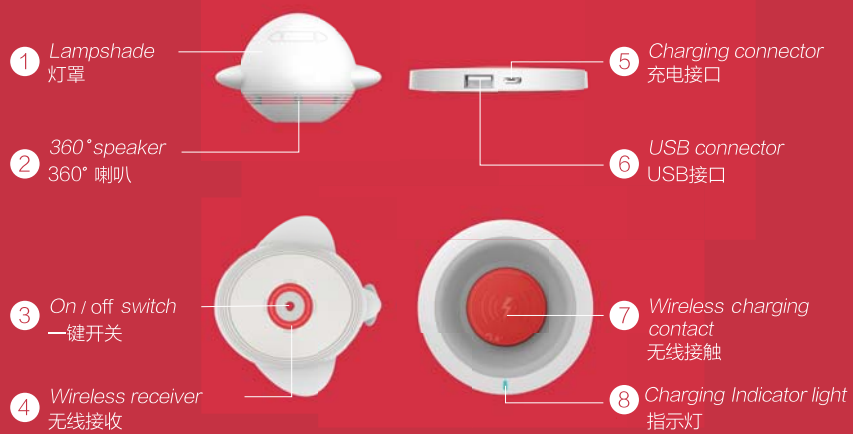
ZOOCORO

- 1.工作供电: 3.0-4.2V
 - 2.功放功率: 1*3W
 - 3.阻抗:4欧姆
 - 4.频响: 20HZ~20KHZ
 - 5.SN: 大于80 dB
 - 6.失真: 小于1%
 - 7.无线传输距离: 大于10米
 - 8.无线输入: 5V500mA, 电池充电: 4.2V300mA
 - 9.充电时间: 3-4小时
 - 10.单LED亮灯时间: 4小时, 单音乐播放时间: 3小时
 - 11.WRGB:LED灯4颗、暖白LED灯4颗、暖白LED灯0.4W
- 显指: ≥ 80
色温: 2700 -3200K WRGB 0.4W

SPECIFICATION 规格

PLAYBULB

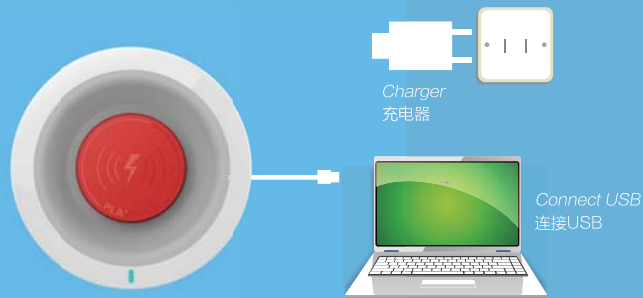
zoocoro



QUICK START GUIDE
快速启动指南

STEP 1
Start guide
启动指南

PLAYBULB
ZOOCORO



EN:

- 1.Connect the male micro USB to the wireless charging board
- 2.Connect the male USB to any USB powered equipment including AC charger,USB port from computer / laptop,etc
- 3.The indicator of the charging board will be shown blue

中文:

- 1.把USB连接线的Micro-USB 插到充电盘的Micro-USB接口
- 2.把USB头插到5V的充电器或是电脑USB口上
- 3.充电盘指示灯会显示蓝色

APP
Control
SPEAKER LAMP

STEP 2
Start guide
启动指南

PLAYBULB
zoocoro



EN:

1. Press the red ON button on the bottom of the speaker lamp
2. The lampshade will light, and you can hear "PAIRING" (start pairing)

中文:

1. 音箱气氛灯底部的红色按键是开关，按下ON
2. 灯罩会发出灯光，并响起提示音“PAIRING”（启动配对）

STEP 3
Start guide
启动指南

PLAYBULB
zoocoro



Choose your favorite color to set
选择自己喜欢的颜色进行设置

EN:

1. TapTap for zoocoro changing
2. KickTapTap to enter settings

中文:

1. 拍拍变色的色彩变化
2. 点击TapTap进入设置页面

APP
control
SPEAKER LAMP

STEP 4
Start guide
启动指南

PLAYBULB
zoocoro



EN:

1. Enter and tap once, and repeat till fifth
2. Tap the speaker lamp, and it will change to the preset colors
3. Please refer to the TAP SETTING for more details. (41p-45p)

中文:

1. 进入拍拍页面点击拍第一下进行设置，依次类推设置其他四拍
2. 拍拍音箱灯,灯罩会变化出预定设置的颜色
3. 详细细节请参考拍拍设置 (41-45)

STEP 5
Start guide
启动指南

PLAYBULB
ZOOCORO



The blue light is on
蓝灯亮起

EN:

- 1.Put the speaker lamp on the charging board that has been set up
- 2.The charging board indicator will change from blue to red while charging
- 3.After full charge, the indicator will turn blue

中文:

- 1.把音箱气氛灯放在已经设置好的充电盘上面
- 2.充电盘指示灯会由蓝色变为红色，这时正在给飞机音箱气氛灯充电
- 3.音箱气氛灯充满后显示蓝灯

APP
control
SPEAKER LAMP

BLUETOOTH SPEAKER
CONNECTION SETUP
蓝牙音箱连接设置

STEP 1
Bluetooth
Settings
蓝牙音箱
连接设置

PLAYBULB
zoocoro



EN:

1. Press the red ON button on the bottom of the speaker lamp to switch power on
2. The lampshade will light, and you can hear "PAIRING" (start pairing)

中文:

1. 音箱气氛灯底部的红色按键是开关，按下ON
2. 灯罩会发出灯光，并发出提示音“PAIRING”（启动配对）

APP
control
SPEAKER LAMP

zoocoro | 25

STEP 2
Bluetooth
Settings
蓝牙音箱
连接设置

PLAYBULB
ZOOCORO



EN:

1. Go to Bluetooth settings on your device, when PLAYBULB ZOOCORO appears connect to this. You will hear an audio beep which means it has been connected.

中文:

1. 打开手机设置 开启蓝牙，找到 PLAYBULB ZOOCORO，点击连接，当音箱传出“滴滴的声音”说明已经和手机蓝牙连接上

STEP 3
Bluetooth
Settings
蓝牙音箱
连接设置

PLAYBULB
ZOOCORO



EN:

1. Once you have established the Bluetooth connection, you can play music from your mobile device from any app, downloaded audio or internet stream.

中文:

1. 连上蓝牙后，音箱可播放手机上的音乐，网上音乐以及第三方APP的音乐

PLAYBULB X APP CONTROL
PLAYBULB X 应用程序控制

STEP 1
Application
control
应用程序控制

PLAYBULB
ZOOCORO

Download and install PLAYBULB X
下载安装 PLAYBULB X



EN:

1. Download and install PLAYBULB X from App Store, or Google Play Store, 豌豆荚, 360助手, 91助手, 百度助手, 安卓市场, 腾讯的应用宝。

中文:

1. 在App Store或Google Play, 豌豆荚, 360助手, 91助手, 百度助手, 安卓市场, 腾讯的应用宝上下载并安装PLAYBULB X。

STEP 2
Application
control
应用程序控制

PLAYBULB
zoocoro



EN:

1. Turn on bluetooth setting in your phone / tablet, enter the app, and click device to see available playbulb products
2. Find Bunny, Duck, Piggy, Airwhale and Bear speaker lamp, and tap to connect it
3. Tap to enter settings for more control

Note: if you can not find the them , please confirm the bluetooth setting on your phones. Also make sure the products switch power on.

中文:

1. 打开手机设置, 开启蓝牙, 进入APP页面点击设备
2. 找到兔子、鸭子、猪 飞机或熊的音箱气氛灯, 点击连接
3. 点击进入设置页面进行一系列的灯光操作

注: 如果找不到请确认音箱气氛灯的开关已经打开, 手机上的蓝牙设置为开, 不然无法连接APP

STEP 3
Application control
应用程序控制

PLAYBULB
zoocoro



EN:

1. Sliding the color wheel to change colors
2. The speaker lamp can be any color you slide

中文:

1. 点击色盘对音箱灯变色
2. 点到的颜色会变成音箱灯发出的颜色

STEP 5
Application
control
应用程序控制

PLAYBULB
ZOOCORO



EN:

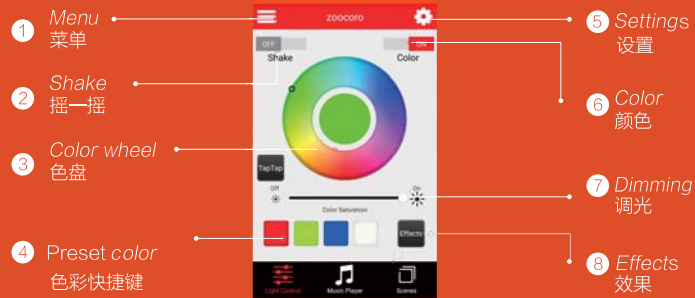
1. Go to the home page: please click the icon to enter PLAYBULB X
2. Skip or browse the tutorial of PLAYBULB X
3. Click to connect the selected PLAYBULB

中文:

1. 进入主界面:连接后, 请点击图标进入应用程序PLAYBULB X
2. 跳过或浏览PLAYBULB X教程
3. 点击进入PLAYBULB彩色LED灯的控制界面

STEP 6
Application control
应用程序控制

PLAYBULB
ZOOCORO

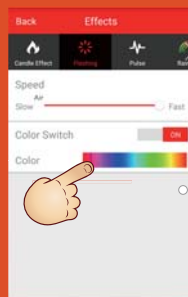


EN: 中文:

- | | |
|---|-------------------|
| 1. Click Menu to enter the Menu page | 1. 点击菜单，进入菜单页面 |
| 2. Shake your device to change color | 2. 打开摇动按钮，摇一摇改变颜色 |
| 3. Turn on the color button, and you can choose the colors | 3. 打开颜色按钮，你可以选择颜色 |
| 4. Click to choose the colors | 4. 点击选择颜色 |
| 5. Click to enter settings | 5. 点击进入设置界面 |
| 6. Switch on the colorful light and white light | 6. 打开五颜六色的光和白光 |
| 7. Adjust the brightness from 0% to 100% | 7. 调整灯光亮度从0%到100% |
| 8. Click the effects button to experience 5 different effects | 8. 点击效果按钮进入界面选择颜色 |

STEP 7
Application
control
应用程序控制

PLAYBULB
zoocoro



EN:

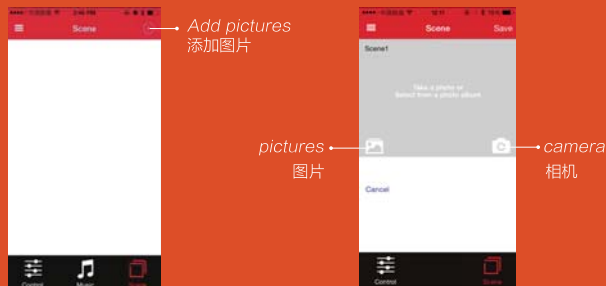
1. Color Effect: click the effect button to choose the Effect from flashing, pulsing, candle, rainbow and rainbow fading
2. Speed: adjust the speed of colors changing slowly or quickly
3. Color switch: open it, and you can choose the colors, close it, and the light will be white

中文:

1. 色彩效果: 点击效果按钮进入到子界面, 然后点击选择颜色效果如下, 闪烁、脉冲、蜡烛、彩虹、彩虹渐变
2. 速度: 以缓慢或快速的滑动来调整颜色变化的速度
3. 彩色开关: 打开它, 你可以选择颜色栏中的颜色, 关闭它, 将发出白色的光

STEP 8
Application
control
应用程序控制

PLAYBULB
ZOOCORO



EN:

1.Scene: click on the scene icon, and choose colors from the pictures
PLAYBULB will be the colors you choose. You can also add scene pictures
from your mobile devices

中文:

1.场景: 点击场景图标进入场景界面,在图片和图片上选择颜色,
PLAYBULB 将显示相应的颜色,可从您的移动设备添加场景图片

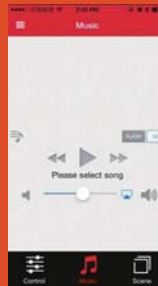
STEP 9
Application control
应用程序控制

PLAYBULB
ZOOCORO

Click device
点击设备

Music play list
音乐播放列表

Volume
音量



Previous Play / pause / next
前一首歌曲 播放 / 暂停 / 下一首歌

EN:

1. Music: click the music icon for the music player – here you can play audio that is stored on your device

Note: please make sure you have connected the lamp in your Bluetooth settings

中文:

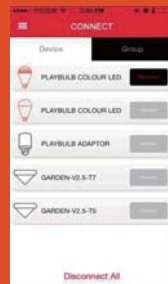
1. 音乐播放: 点击音乐进入音乐播放器界面, 然后你就可以开始播放音乐

注意: 请确保“PLAYBULB ZOOCORO”连接在手机设置

STEP 10

Application
control
应用程序控制

PLAYBULB
zoocoro



EN:

- 1.Group control: enter the device list in the menu, and select the PLAYBULB you want to add to the group
- 2.Rename the group: click the group and rename it in rename option
- 3.Device: enter the device list including all the PLAYBULB within the wireless range

中文:

- 1.群组控制:输入菜单列表, 进入设备列表, 选择你想添加的连接PLAYBULB为一组
- 2.重命组名:点击群组名称, 在重命名选项中重命组名
- 3.设备:进入菜单列表点击进入设备的列表, 包括所有连接PLAYBULB 蓝牙无线范围内的设备

STEP 11

Application control
应用程序控制

PLAYBULB
zoocoro



EN:

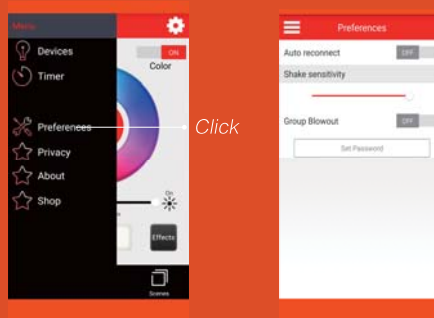
- 1.Timer: click to set timer on the menu list
- 2.How to set: take Wake up mode for example,set and save operating time,colors and mode
- 3.Enable the Repeat setting:The timer will be operated according to the setting everyday

中文:

- 1.定时器:点击菜单图标进入菜单列表,然后点击进入设置定时器
- 2.如何设置:以唤醒模式为例,设置和保存时间、运行时间、颜色、模式
- 3.“重复”(Repeat)设置之后,以后每天按所设时间运行启动“重复”功能

STEP 13
Application
control
应用程序控制

PLAYBULB
ZOOCORO



EN:

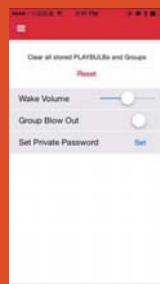
1. Preference : click the preference setting in the Menu list

中文:

1.偏好:点击菜单图标进入菜单列表, 然后点击进入设置的偏好

STEP 14
Application
control
应用程序控制

PLAYBULB
ZOOCORO



EN:

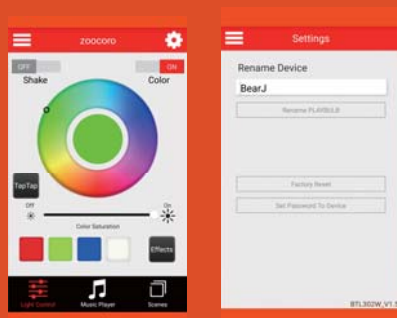
1. Tail volume: slide to adjust the volume of music in the Wake mode
2. Set your password: Key in 4-digits password ,it's to protect the PLAYBULB from controlling by others

中文:

1. 音量:滑动调整唤醒模式的音乐音量
2. 设置私人密码:点击设置为这个应用程序设置你自己的密码

STEP 15
Application
control
应用程序控制

PLAYBULB
ZOOCORO



EN:

- 1.Settings: click the setting icon to enter the settings
- 2.Rename device: click and input the new name, and click yes to save
- 3.Set your own password: click on the settings for this application to set your own password press to set the password to the PLAYBULB

中文:

- 1.设置:点击设置图标进入设置界面
- 2.重命名设备:点击输入一个新的名称, 并点击是的, 以保存
- 3.设置私人密码: 点击将密码写进PLAYBULB

SETTING OPTIONS / TAP COLORS
TAP SETTING

设置选择 / 点击颜色 / 拍拍设置

STEP 1
Tap setting
拍拍设置

PLAYBULB
zoocoro



EN:

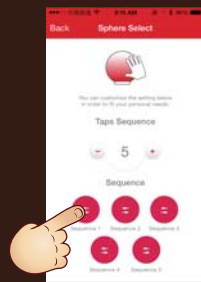
1. Turn on Bluetooth
2. Go to the APP and click TapTap for colors changing settings

中文:

- 1.打开手机蓝牙
- 2.进入APP页面，点击 TapTap 进行色彩选择设置

STEP 2
Tap setting
拍拍设置

PLAYBULB
zoocoro

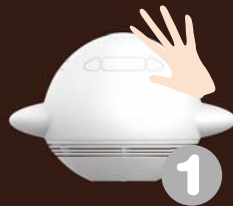
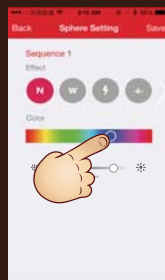


EN:
1. Tap once for colors changing settings

中文:
1. 进入设置 点击拍第一下进行色彩设置

STEP 3
Tap setting
拍拍设置

PLAYBULB
ZOOCORO



EN:

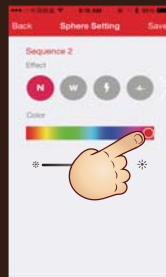
1.The color you tap first is white
(you can set it with your own preference)

中文:

1.选择第一拍的颜色这里是白色（可根据自己喜欢的颜色进行选择）

STEP 4
Tap setting
拍拍设置
设置选择

PLAYBULB
zoocoro



EN:

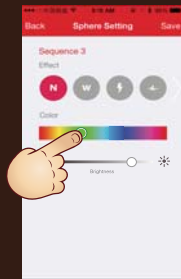
1. The color you tap second is red
(you can set it with your own preference)

中文:

1. 选择第二拍的颜色这里是红色（可根据自己喜欢的颜色进行选择）

STEP 5
Tap setting
拍拍设置
设置选择

PLAYBULB
ZOOCORO



EN:

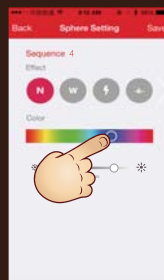
1.The color you tap third is green
(you can set it with your own preference)

中文:

1.选择第三拍的颜色这里是绿色（可根据自己喜欢的颜色进行选择）

STEP 6
Tap setting
拍拍设置

PLAYBULB
zoocoro



EN:

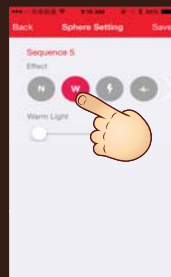
1.The color you tap fourth is blue
(you can set it with your own preference)

中文:

1.选择第四拍的颜色这里是蓝色（可根据自己喜欢的颜色进行选择）

STEP 7
Tap setting
拍拍设置
设置选择

PLAYBULB
ZOOCORO



EN:

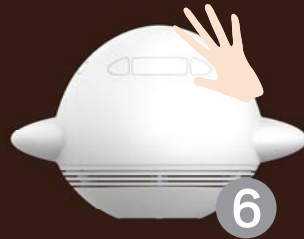
1. The color you tap fifth is rainbow fade
(you can set it with your own preference)

中文:

1. 选择第五拍的颜色这里是彩虹渐变(可根据自己喜欢的颜色进行选择)

STEP 8
Tap setting
拍拍设置
设置选择

PLAYBULB
zoocoro



EN:

1. Turn off the light when you tap Sixth
2. For any number of sequence setting , the last one is default OFF , which is default , no need to set it

中文:

1. 第六拍关闭灯光
2. 任何拍打的设置，最后一下是关灯，这是默认的，不用设

SAFETY INFORMATION

PLAYBULB

zoocoro

Long-term exposure to loud music may cause hearing damage. It is best to avoid extreme volume when listening to audio for extended periods

- The product is not suitable for use in totally enclosed housing
- The product is not compatible with dimmable switches or light fixtures
- Please keep the product far away from water or moisture
- For safety reasons and under the terms of warranty, do not attempt to disassemble the product
- Not for emergency lighting
- Before replacing, turn off light fixture to avoid shock and let the product cool

长期暴露于大声的音乐可能会导致听力损伤。持续听音乐最好避免极端音量

- 本产品不适合全密闭使用
- 本产品不适用于可调光开关或照明设备
- 请将本产品远离水或潮湿环境
- 出于安全保修期内请勿拆卸本产品
- 非紧急照明
- 替换前请关掉照明设备，以防触电并使产品冷却

WARRANTY CARD

PLAYBULB

zoocoro

Thank you for your purchase of MIPOW's product. MIPOW warrants that the product is, at the time of its original purchase free of defects in workmanship and material. This Limited Warranty for the product shall last for twelve (12) months from the date of original purchase. This original warranty card and original invoice must be presented at the time you require warranty service or such warranty will be voided. This limited warranty is valid only if the product is used for the purpose for which it was designed. It does not apply to damage or loss caused by negligence; physical abuse; misuse; accident; exposure to moisture; dampness or extreme temperatures; unauthorized modifications; unauthorized opening or repair; acts of nature; or other actions beyond the reasonable control of MIPOW. In case of when the warranty does not apply, a repair or replacement charge will be incurred. The customer shall be responsible for sending the defective product to and collecting the repaired or replaced product from the service center.

NB: MIPOW reserves the right to interpret the terms and conditions contained herein; and the right for any changes without prior notice.

多谢选购MIPOW产品。MIPOW保证：本产品于购买时并无任何材质或制品上的瑕疵。本产品的有限保养自购买起十二（12）个月内。当需要保养服务时，顾客必须出示保养证正本和发票正本，否则保养将被作废。

保养服务只限于产品在正常使用下有效。此有限保养不适用于因人为疏忽、粗鲁的操作、不正确的使用、意外事故、暴露于湿气之下、潮湿或过度高温、未经授权的修正、未经授权的开启或修复、不可抗力；或其它MIPOW无法合理控制的行为所造成的损坏或损失。如损坏未能合乎本保养条例，顾客将被收取维修或更换零件的费用。顾客必须自行将有瑕疵的产品交到客户服务中心，并自行取回已修复或更换的本产品。

注：MIPOW拥有任何对本人所述的条件和条件之最终裁决权，及有权随时对条款和条件作出更改，而无需另行通知。

OTHER LANGUAGES 其他语言

PLAYBULB

ZOOCORO

한국어	www.playbulb.com
日本語	www.playbulb.com
El español	www.playbulb.com
Deutsch	www.playbulb.com
Português	www.playbulb.com
Français	www.playbulb.com
In Italiano	www.playbulb.com



This device complies with part 15 of the FCC Rules. Operation is subject to the following two conditions: (1) This device may not cause harmful interference, and (2) this device must accept any interference received, including interference that may cause undesired operation.

This device must not be co-located or operating in conjunction with any other antenna or transmitter.

This equipment has been tested and found to comply with the limits for a Class B digital device, pursuant to part 15 of the FCC Rules. These limits are designed to provide reasonable protection against harmful interference in a residential installation. This equipment generates, uses and can radiate radio frequency energy and, if not installed and used in accordance with the instructions, may cause harmful interference to radio communications. However, there is no guarantee that interference will not occur in a particular installation. If this equipment does cause harmful interference to radio or television reception, which can be determined by turning the equipment off and on, the user is encouraged to try to correct the interference by one or more of the following measures:

- Reorient or relocate the receiving antenna.
- Increase the separation between the equipment and receiver.
- Connect the equipment into an outlet on a circuit different from that to which the receiver is connected.
- Consult the dealer or an experienced radio/TV technician for help.

To comply with FCC's RF radiation exposure limits for general population/uncontrolled exposure, this device must be installed to provide a separation distance of at least 20cm from all persons.

WARNING: Any changes or modifications to this unit not expressly approved by the party responsible for compliance could void the user's authority to operate the equipment.

This device must not be collocated or operating in conjunction with any other antenna or transmitter.

zoocoro