

Ultra-Flat Bluetooth Keyboard User Manual

Version 1.0



CAUTION: To use this product properly, please read the user's guide before installation

Welcome

Congratulations on selecting the Ultra-Flat Bluetooth Keyboard, it's super slim size with 85 keys. Advanced patent on less noise and adopt latex spring circle and scissor structure, This creative and easy-to-use Bluetooth Keyboard will bring you the novel feeling of wireless transmitting.

Package Contents

The retail package contains:

- Ultra-Flat Bluetooth Keyboard
- User Manual
- Power USB2.0 Cable

If any items are damaged or missing, please contact your vendor.

System Requirement

IBM or PC Compatible/Mac PC enable with Bluetooth wireless technology.

Windows system with Bluetooth software installed (Windows XP SP2 or above, Windows vista, Toshiba stack, Widcomm BTW, or IVT Bluecoil).

Mac OS 10.2.8 or above with Bluetooth software installed.

Operation

Note: on the first use, the battery might be empty, so you should recharge it for 20min-30min.

Installation Guide

Step 1. Charging the battery



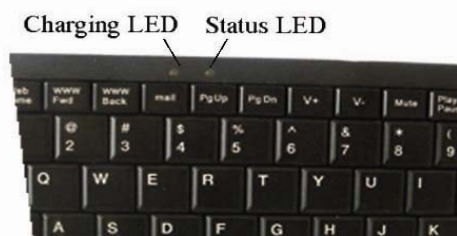
When to charge

1. First-Time Use: Please charge at least 6 hours for the first time usage and charge at least 2 hours when battery runs low

How to charge

Plug the USB cable into your keyboard and computer by USB port

2. respectively and it starts charging. Keyboard can work uninterruptedly during charging. When charging, the RED led will light and come to dark; When finish charging, the RED led will be in dark of off.



1. Switch the keyboard ON, using the ON/OFF button:
The Green led will light for 2 seconds

2. Click the PAIR/CONNECT button, at the right of the keyboard:



Pair/Pair connect

The Green led will light for 2 seconds and be blinking intermittently

3. Now the Flat Bluetooth keyboard is under pairing state and it's waiting for connecting with your device
4. When low power, the Green led light for 1 second and blink Intermittently

Step 2.

Pairing your Bluetooth Keyboard with your computer Before pairing your Bluetooth Keyboard with your computer, you should read through the instructions that came with your Bluetooth hardware and software for detail how to pair a device to your specific Bluetooth configuration.

Follow below steps to pair your Bluetooth Keyboard under Widcomm BTW, Microsoft Bluetooth driver and IVT Bluecoil

.Before you can install your Bluetooth Keyboard, please make sure you have done the Bluetooth dongle installation procedure.

.Press the "Discovery" button on the bottom of the keyboard for 2-5 seconds. The keyboard will be switched to the standby mode for pairing, the Green light LED will flash..

Next Pairing Steps

A. Steps for matching WIDCOMM

- 1) .Double click the BTW icon in toolbar, select "Bluetooth" and click "search for devices"



2) On Bluetooth Keyboard type the stochastic match code and press the Enter key



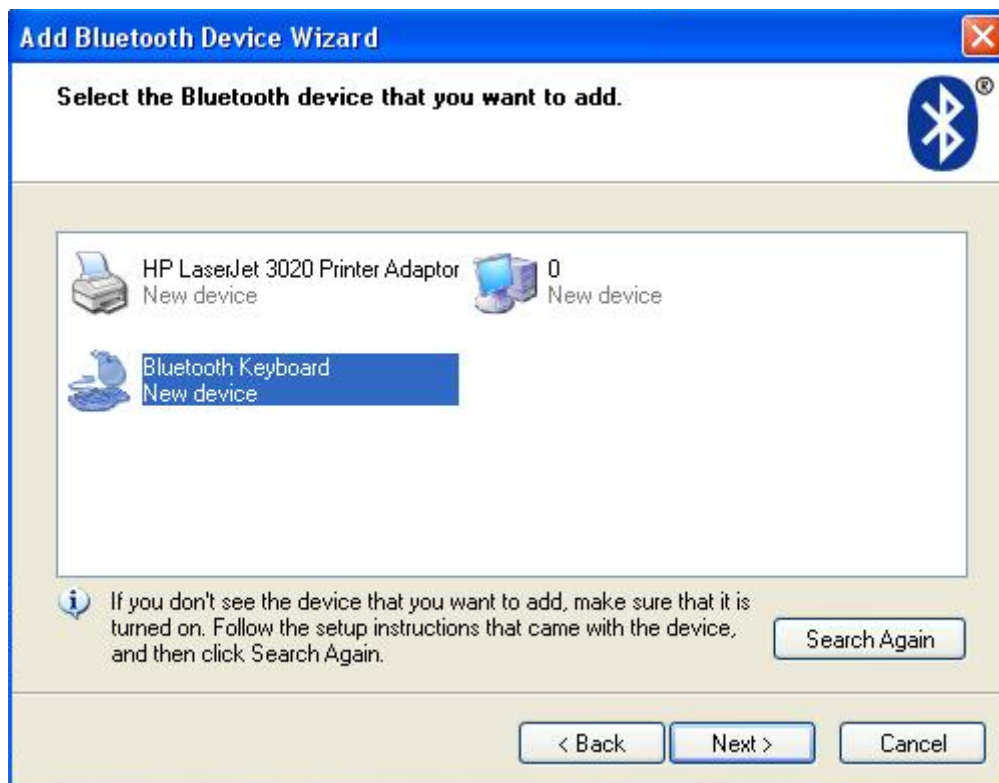


B. Steps for matching on Microsoft built-in software

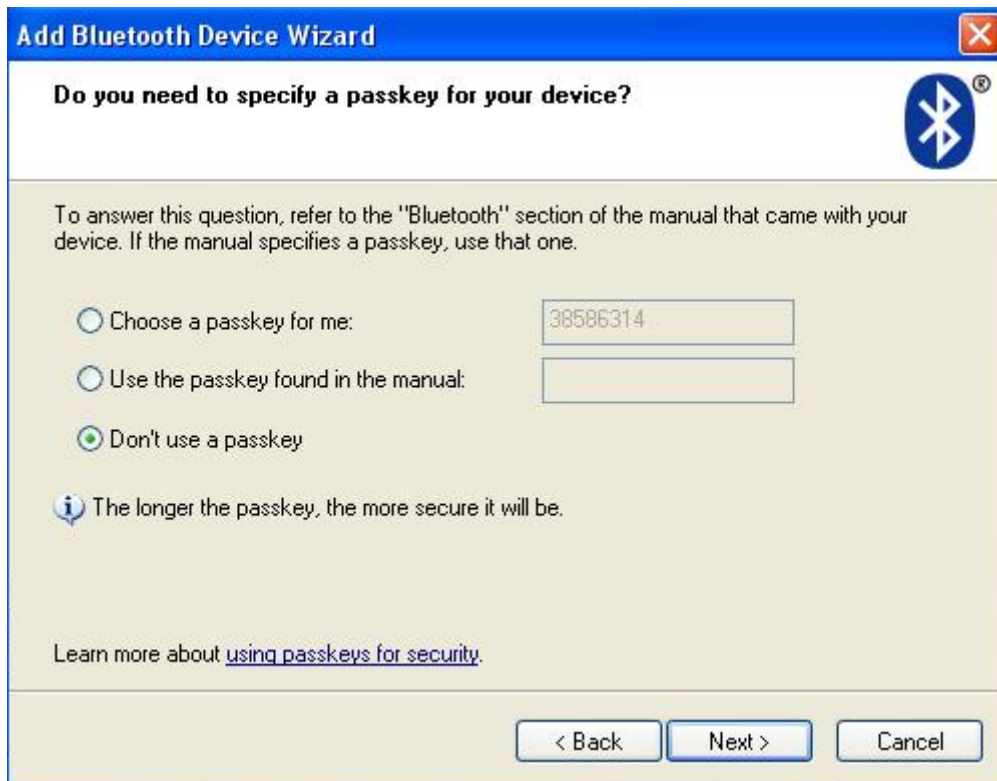
1) . Click Start menu, click Control Panel and double click "Bluetooth Devices"., On the "Devices" tab, click "Add".



2) .Select "My device is set up and ready to be found", when find the Bluetooth Keyboard, you can select it and click "next"

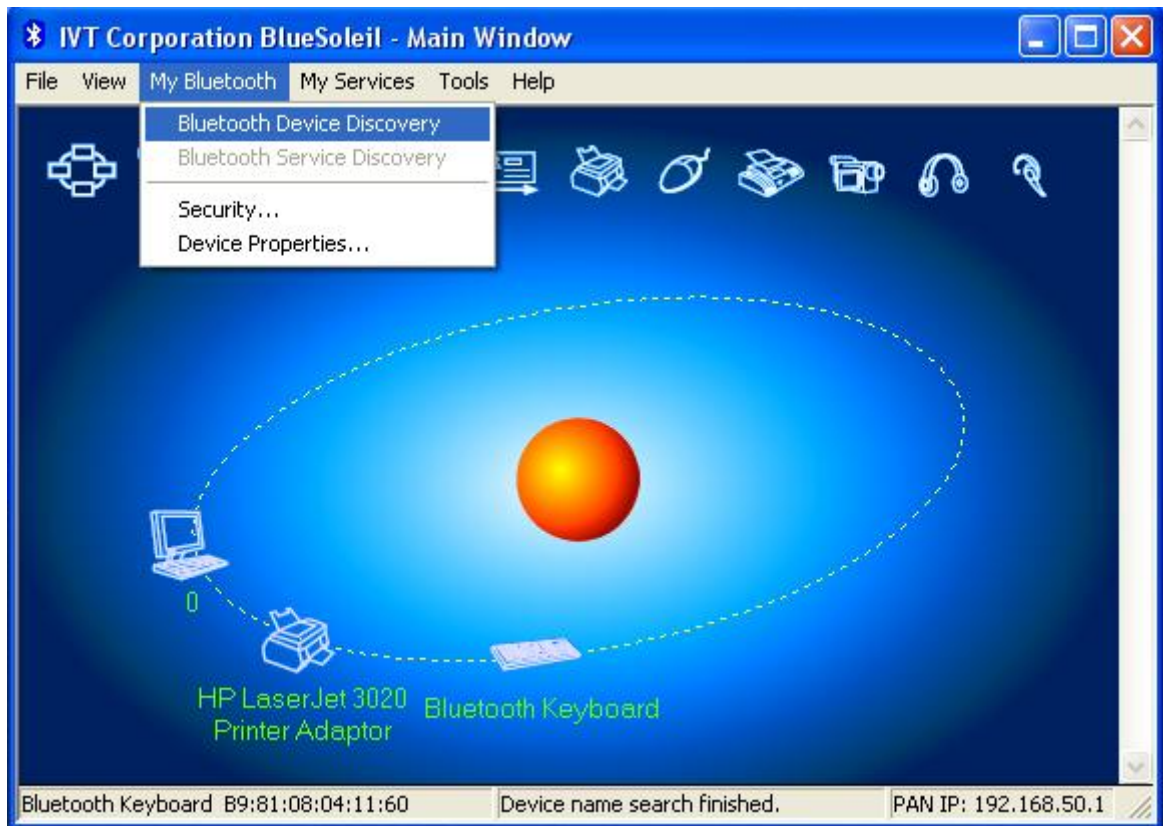


3) . Select "Don't use passkey", and click "next", operating system will finish the installation of the new facility automatically.

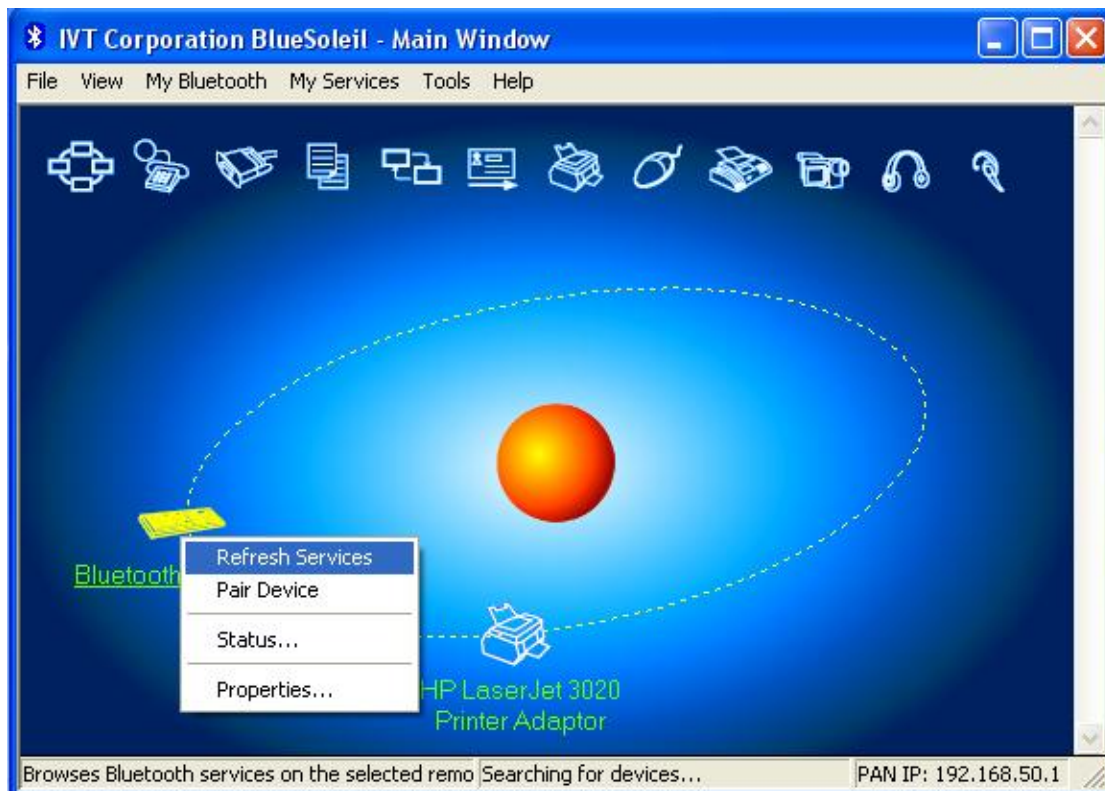


C.Steps for matching on IVT Bluecoil

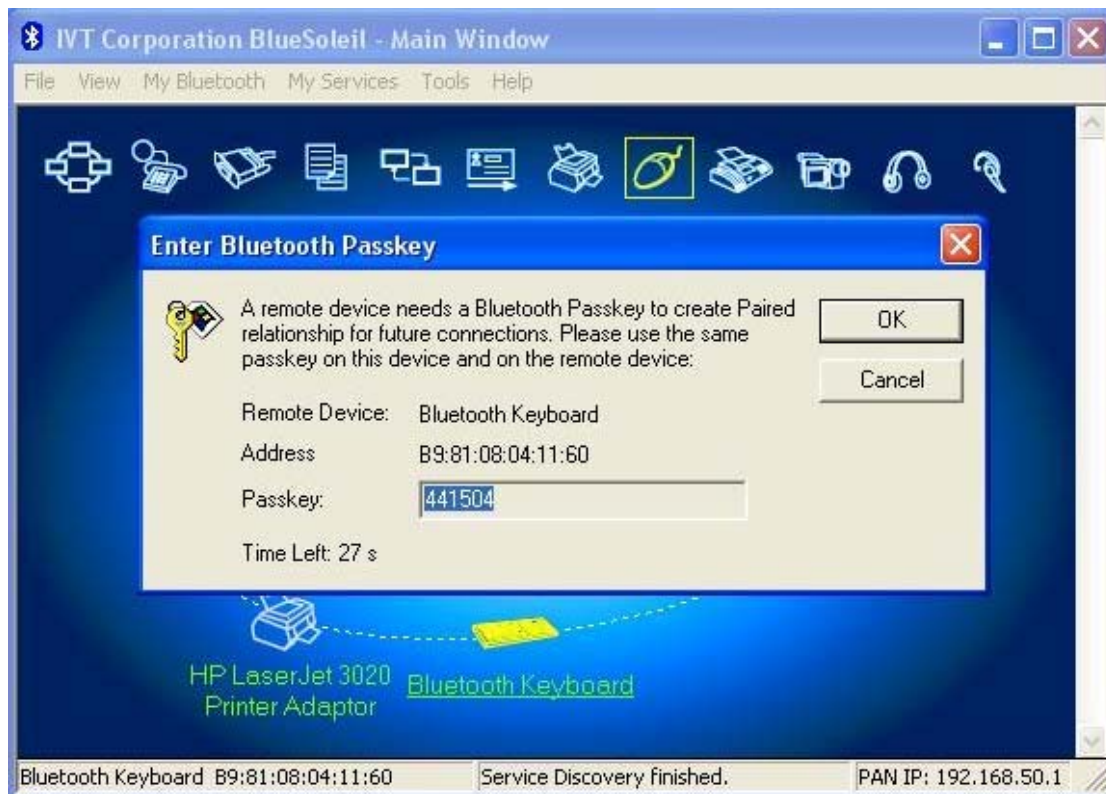
1) .Make sure the bluetooth function have been activated on the computer system, double click the bluetooth icon in toolbar, then click "Bluetooth Device Discovery" under "My Bluetooth" in toolbar.



2) . Select the found bluetooth keyboard device, press the right button and select "Refresh Services"



3) . Then select the Bluetooth Keyboard icon, press right button to select “Connect” and click “Bluetooth Human Interface Device Service”, On Bluetooth Keyboard type the stochastic match code and press the Enter key



Product Specifications

- . Bluetooth Specification: Version 2.1 Class 2.HID 1.0 Compliant
- . Frequency: 2.4GHz Spectrum
- . Integrated Recharged Li-Battery
- . Working distance among bluetooth: 10 meters
- . Operation Current: < 5mA
- . Standby Current: 1.2mA
- . Sleep Current: < 0.2 mA
- . Transmit Range: up to 10 meters
- .Control audio functions directly from the keyboard
- .One-touch hot keys to quickly access to music and multimedia function
- .Compatible with Andriod OS
- .Compatible with Windows® 2000/ XP/Vista/7

- . Storage Temperature: -40 ~ +125 degree
- .Dimensions: 246mm(L)x101.7mm(W)x6.0mm(H)

Troubleshooting

If you are unable to connect your Bluetooth Keyboard to the computer, or the keyboard work unconventionally, please try the following:

.Before you install your Bluetooth Keyboard, please make sure you have done the Bluetooth Dongle installation procedure, and Bluetooth facility is turned on.

.Ensure Bluetooth Keyboard has been paired to PC completely. (The system may require pairing again after restart PC If use low battery to pair)

.Ensure the Bluetooth Keyboard is within a 10 meters range of your PC

.Ensure your bluetooth device of PC have not be changed.(you have to re-connect if changed)

.If your PC bluetooth facility is connected to other bluetooth device, please kindly confirm that the speed of the Bluetooth facility is enough.

Federal Communication Commission Interference Statement

This device complies with Part 15 of the FCC Rules.

Operation is subject to the Following two conditions:

1. This device may not cause harmful interference.
2. This device must accept any interference received., including interference that may cause undesired operation.

Caution: Changes or modifications not expressly approved by the party responsible for compliance could void the user's authority to operate the equipment.

**Dispose of batteries according to local regulations.
Do not dispose as household waste**

FCC WARNING

This device complies with Part 15 of the FCC Rules. Operation is subject to the following two conditions:

- (1) this device may not cause harmful interference, and
- (2) this device must accept any interference received, including interference that may cause undesired operation.

NOTE: This equipment has been tested and found to comply with the limits for a Class B digital device, pursuant to part 15 of the FCC Rules. These limits are designed to provide reasonable protection against harmful interference in a residential installation. This equipment generates, uses and can radiate radio frequency energy and, if not installed and used in accordance with the instructions, may cause harmful interference to radio communications. However, there is no guarantee that interference will not occur in a particular installation. If this equipment does cause harmful interference to radio or television reception, which can be determined by turning the equipment off and on, the user is encouraged to try to correct the interference by one or more of the following measures:

- Reorient or relocate the receiving antenna.
- Increase the separation between the equipment and receiver.
- Connect the equipment into an outlet on a circuit different from that to which the receiver is connected.
- Consult the dealer or an experienced radio/TV technician for help.

NOTE: The manufacturer is not responsible for and radio or TV interference caused by unauthorized modifications to this equipment. Such modifications could void the user's authority to operate the equipment.