



WiPG-1000P

Quick Installation Guide

Version: 2.0
Date: September 19, 2016

1. Package Contents

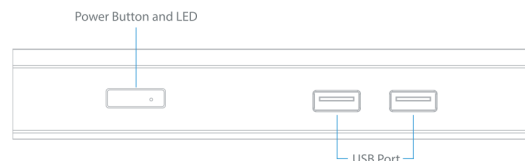
- wePresent WiPG-1000P Box
- wePresent USB Token
- Power Adapter (DC +5V, 2.6A)
- 2 WiFi Antennas
- Quick Installation Guide
- Wall Mount Kit
- Warranty Card
- CE DoC

2. USB Token Contents

- MirrorOp Installer for Windows
- MirrorOp Installer for Mac
- Executable MirrorOp Application for Windows
- Executable MirrorOp Application for Mac
- SVS Driver (For Mac Extended Screen)
- SNMP MIB File
- User Manual

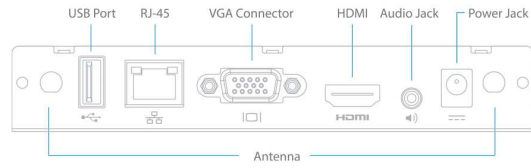
3. Physical Details

- **Front Panel**



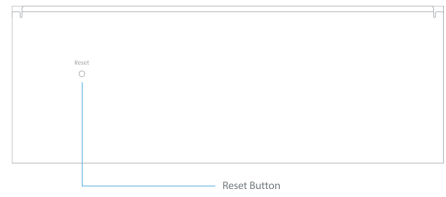
Power Button and LED	Power On/Off Button. LED Indicator: System Loading(Red), Ready(Green)
USB Port (Front)	2 USB Ports for USB Mouse and Keyboard

• **Rear Panel**



Antenna	WiFi Antenna
USB Port (Rear)	USB Port for USB IWB Device (HID Type)
RJ-45	10/100M RJ-45 Port
VGA	VGA Connector
HDMI	HDMI Connector
Audio Jack	Audio Jack (3.5mm)
Power Jack	Power Jack (5V/2.6A)

• **Bottom Side**



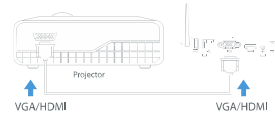
Reset Button	Press the Reset button and the Power button on the device to execute hardware reset.
---------------------	--

4. What You Might Need

- Projector/Display with VGA/HDMI Interface
- Windows or Mac PC/Laptop
- Apple iPhone, iPad or iPod Touch
- Android Phone or Tablet
- Speaker (Optional, for Audio Projection Feature)
- USB Mouse and Keyboard (Optional, for Remote Desktop Feature)
- USB HID IWB Device (Optional, for IWB over IP Feature)

5. Quick Installation

- 1) Connect WiPG-1000 device to the projector/display through the VGA/HDMI port and turn on the projector/display power.



- 2) Connect the power adaptor to the WiPG-1000 device and press the Power button to turn on the WiPG-1000 device. The system will be ready when the LED light turns green.

- The default standby screen as shown below will be displayed when the system is ready.



- 3) Insert the speaker cable to the WiPG-1000 audio jack for audio output (Optional when using VGA).

- 4) Insert the USB mouse or keyboard/USB touch device to the WiPG-1000 front USB port for on-screen display (OSD) control. (Optional)
- 5) The MirrorOp app for iOS and Android can be downloaded from the iOS App Store or Google Play Store.

6. Windows

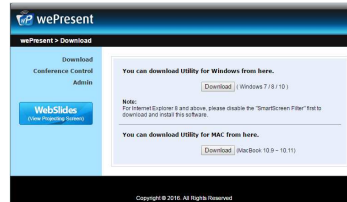
- Do Not Support Windows Phone, Windows RT
- 6.1 Install the application
 - 1) Make sure your PC is WiFi-enabled, and connect your PC to the wePresent WiPG-1000 box through WiFi. You can find the WiFi network name (SSID) of your WiPG-1000 box on the standby screen of the projector/display. [Default SSID is WiPG-1000]

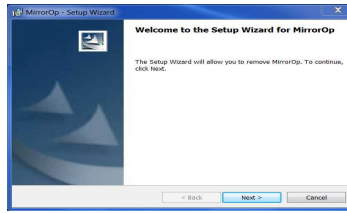



- 2) Open your browser, and enter the IP address of your WiPG-1000 box in the address bar of the browser. You can find the IP address on the standby screen of the projector/display. [Default IP address is 192.168.100.10]

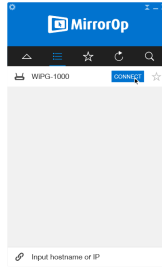


3) Download the wePresent software (i.e. “MirrorOp”) for “Windows 7/8/10”, and follow the Setup Wizard to install the software. (You can also install the “MirrorOp” software from the USB token directly.) Make sure the software is not blocked by your firewall.

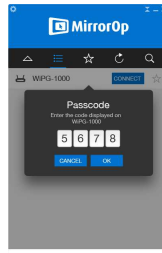




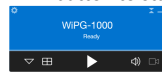
- 6.2 Start the application
 - 1) Click the MirrorOp icon  on the desktop to execute the application, or launch the application from the USB token directly. (You can find the MirrorOp application in the USB drive.)
 - 2) It will start to search for the wePresent WiPG-1000 receiver automatically.



- 3) Click on the WiPG-1000 device and enter the login code shown on the display.




4)Click the “PLAY” button to start the screen sharing.

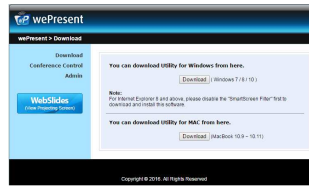


7. Mac

- 7.1 Install the application
 - 1)Make sure your Mac is WiFi-enabled, and connect your Mac to the wePresent WiPG-1000 box through WiFi.
 - 2)Open your browser, and enter the IP address of your WiPG-1000 box in the address bar of the browser. You can find the IP address on the standby screen of the projector/display. [Default IP address is 192.168.100.10]




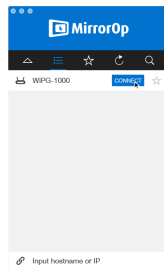
3) Download the software for “Mac 10.7~10.10”, and you will see a DMG file with a MirrorOp icon .



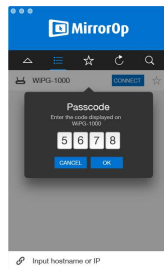
4) Drag the MirrorOp icon  into the Applications folder.



- 7.2 Start the application
 - 1) Click on the MirrorOp icon  from the Applications folder to execute the application.
 - 2) It will start to search for the wePresent WiPG-1000 receiver automatically.



3) Click on the WiPG-1000 device and enter the login code shown on the display.



4) Click the "PLAY" button to start the screen sharing.



8. Safety Information

< Federal Communications Commission (FCC) Statement >

- This equipment has been tested and found to comply with the limits for a Class B digital device, pursuant to part 15 of the FCC rules. These limits are designed to provide reasonable protection against harmful interference in a residential installation.

- This equipment generates, uses and can radiate radio frequency energy and, if not installed and used in accordance with the instructions, may cause harmful interference to radio communications. However, there is no guarantee that interference will not occur in a particular installation. If this equipment does cause harmful interference to radio or television reception, which can be determined by turning the equipment off and on, the user is encouraged to try to correct the interference by one or more of the following measures:
 - Reorient or relocate the receiving antenna.
 - Increase the separation between the equipment and receiver.
 - Connect the equipment into an outlet on a circuit different from that to which the receiver is connected.
 - Consult the dealer or an experienced radio/TV technician for help.

- You are cautioned that changes or modifications not expressly

approved by the party responsible for compliance could void the user's authority to operate the equipment.

< FCC RF Radiation Exposure Statement >

- This Transmitter must not be co-located or operating in conjunction with any other antenna or transmitter.
- This equipment complies with FCC RF radiation exposure limits set forth for an uncontrolled environment. This equipment should be installed and operated with a minimum distance of 20 centimeters between the radiator and your body.

Caution:

- Operation in the band 5150-5250 MHz is only for indoor use to reduce the potential for harmful interference to co-channel mobile satellite systems. Please note that high-power radars are allocated as primary users (i.e. Priority users) of the bands 5250-5350 MHz and 5650-5850 MHz and that these radars could cause interference and/or damage to LE-LAN devices.

Canada

This device complies with Industry Canada's licence-exempt RSSs.

Operation is subject to the following two conditions:

- (1) This device may not cause interference; and
- (2) This device must accept any interference, including interference that may cause undesired operation of the device.

Le présent appareil est conforme aux CNR d'Industrie Canada applicables aux appareils radio exempts de licence. L'exploitation est autorisée aux deux conditions suivantes: (1) l'appareil ne doit pas produire de brouillage, et (2) l'utilisateur de l'appareil doit accepter tout brouillage radioélectrique subi, même si le brouillage est susceptible d'en compromettre le fonctionnement.

Radiation Exposure Statement:

The product comply with the Canada portable RF exposure limit set forth for an uncontrolled environment and are safe for intended operation as described in this manual. The further RF exposure reduction can be achieved if the product can be kept as far as possible from the user body or set the device to lower output power if such function is available.

Informations concernant l'exposition aux fréquences radio (RF)

Le produit est conforme aux limites d'exposition pour les appareils portables RF pour les Etats-Unis et le Canada établies pour un environnement non contrôlé. Le produit est sûr pour un

fonctionnement tel que décrit dans ce manuel. La réduction aux expositions RF peut être augmentée si l'appareil peut être conservé aussi loin que possible du corps de l'utilisateur ou que le dispositif est réglé sur la puissance de sortie la plus faible si une telle fonction est disponible.

The device shall automatically discontinue transmission in cases of absence of information to transmit, or operational failure. Note that this is not intended to prohibit transmission of control or signalling information or the use of repetitive codes where required by the technology.

The device for operation in the band 5150–5250 MHz is only for indoor use to reduce the potential for harmful interference to co-channel mobile satellite systems;
This device is restricted to indoor use.

This device and its antenna(s) must not be co-located or operating in conjunction with any other antenna or transmitter.

CAN ICES-3 (B)/NMB-3(B)

The Country Code Selection feature is disabled for products marketed in the US/Canada

. This radio transmitter (**9393B-WP1KP16**) has been approved by Industry Canada to operate with the antenna types listed below with the maximum permissible gain indicated. Antenna types not included in this list, having a gain greater than the maximum gain indicated for that type, are strictly prohibited for use with this device.

No.	Model	Ant. Type	Ant. Connector	Gain (dBi)	Remark
1	AN2450-4828RS	Dipole	SMA Male Reverse	2	2.4GHz / 5GHz
2				2	2.4GHz / 5GHz

Le présent émetteur radio (9393B-WP1KP16) a été approuvé par Industrie Canada pour fonctionner avec les types d'antenne énumérés ci-dessous et ayant un gain admissible maximal et l'impédance requise pour chaque type d'antenne. Les types d'antenne non inclus dans cette liste, ou dont le gain est supérieur au gain maximal indiqué, sont strictement interdits pour l'exploitation de l'émetteur.

No.	Model	Ant. Type	Ant. Connector	Gain (dBi)	Remark
1	AN2450-4828RS	Dipole	SMA Male Reverse	2	2.4GHz / 5GHz
2				2	2.4GHz / 5GHz



WiPG-1000P

網路投影閘道器
快速安裝手冊

Version: 2.0
Date: September 19, 2016

1. 包裝內容

- wePresent WiPG-1000P主機
- wePresent 隨身碟
- 電源變壓器 (DC+5V,2.6A)
- 2支無線天線
- 壁掛套件
- 快速安裝手冊
- 保證書
- CE DoC

2. 隨身碟內容

- Windows Installer (Windows 安裝程式)
- MAC Installer (Mac 安裝程式)
- MirrorOp 免安裝版程式 (Windows)
- MirrorOp 免安裝版程式 (Mac)
- VDD Driver (Windows XP/Vista 虛擬延伸桌面投影驅動程式)
- SVS Driver (Mac 虛擬延伸桌面投影驅動程式)
- SNMP 管理檔
- User Manual (使用者手冊)

3. 主機實體介紹

- 前蓋設計



電源開關與電源指示燈

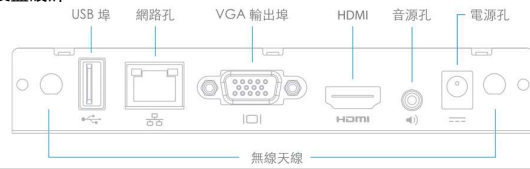
電源開關按鈕

LED指示燈：系統啟動（紅），待機（綠）

USB埠

兩組USB埠可供鍵盤，滑鼠及觸碰設備

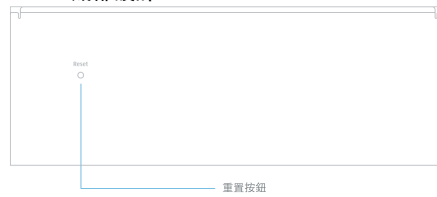
• 後蓋設計



無線天線	WiFi 天線
USB 埠 (後方)	提供和觸控螢幕連接的USB埠 (HID類別)
網路孔	10/100M 網路孔
VGA	VGA 連接埠
HDMI	HDMI 連接埠
音源孔	音源孔(3.5mm)
電源孔	電源孔(5V)

- 操作溫度宣告 : 0~40°C
- 額定電壓電流 : 5V 2.6A

• 底部設計



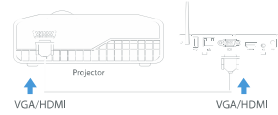
重置按鈕	按下重置按鈕並開啟電源，來進行硬體重置
------	---------------------

4. 你可能需要以下設備

- 投影機/顯示器並且可支援 VGA/HDMI 輸出
- Windows 或 Mac 電腦/筆記型電腦
- Apple iPhone、iPad 或 iPod Touch 裝置
- Android Phone 或 Tablet 裝置
- 喇叭 (非必要, 主要做聲音輸出功能)
- USB 滑鼠和鍵盤 (非必要, 主要做遠端桌面控制功能)
- USB HID 互動式電子白板 (非必要, 可搭配 UMT 功能使用)

5. 快速安裝指南

- 1) 將wePresent WiPG-1000 透過 VGA/HDMI 線連接至投影機 / 顯示器, 並將投影機 / 顯示器的電源打開。



- 2) 將電源變壓器插入WiPG-1000後, 請按壓電源開關並開啟WiPG-1000, **當系統已經開機完畢後, LED 燈號切換成綠色。**
 - 當系統完成開機後, 它將會顯示預設的待機畫面在投影機 / 顯示器的畫面上。



- 3) 將喇叭線插入WiPG-1000 的音源孔來得到音效輸出(選項, 配合VGA輸出)。
- 4) 插入USB滑鼠或鍵盤/USB觸控裝置至WiPG-1000 前USB埠, 來使用遠端控制功能(選項)。

6. Windows 系統應用

- 不支援 Windows Phone, Windows RT

- 6.1 安裝程式

- 1) 請先確認您電腦的無線網路已經啟用，並且將您的電腦透過WiFi連線至wePresent WiPG-1000。您可以找到在開始/待機畫面中，找到WiFi名字(SSID)。



- 2) 開啟網路瀏覽器並輸入裝置主機名稱或者是 IP 位址在瀏覽器位址列上，您可以在投影畫面上找到 IP 位址和主機名稱 (預設主機名為 WIPG-1000, 預設 IP 位址為 192.168.100.10)



- 3) 下載 Windows所使用的軟體，並依照安裝精靈來執行軟體安裝 (您也可以直接在wePresent隨身碟中執行軟體安裝)。請同時確認您的防火牆可允許軟體通過。

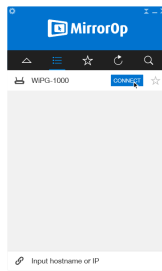


• 6.2 執行軟體

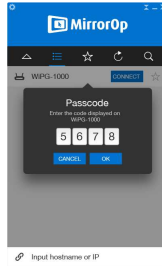



1) 點選桌面 MirrorOp 圖示 來執行軟體，或直接從 wePresent 隨身碟中來執行(您可在 USB 根目錄找到程式)。

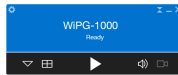
2) 接下來，程式將會自動找尋 WiPG-1000 裝置。



3) 選擇欲連線的 WiPG-1000 裝置，並輸入登入密碼。



4) 登入成功後，按下投影按鈕  開始投影。




7. Mac系統應用

• 7.1 安裝程式


1) 首先啟用您的無線網路功能，並連線至 WiPG-1000。

2) 開啟網路瀏覽器並輸入裝置主機名稱或者是 IP 位址在瀏覽器上，您可以在投影畫面上找到 IP 位址和主機名稱。(預設主機名為 WiPG-1000，預設 IP 位址為 192.168.100.10)




3) 下載 Mac 系統使用的軟體，您將會看到圖示為  的DMG檔。



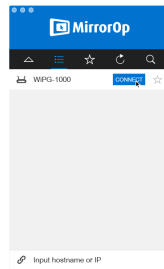
4) 將  圖示拖曳至「應用程式」資料夾。



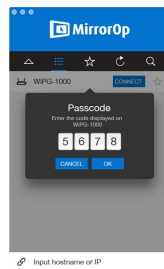
- 7.2 執行軟體


1) 在軟體資料夾中，點選 MirrorOp 圖示  來執行軟體，或直接從wePresent隨身碟中來執行(您可在USB根目錄找到程式)。

2) 接下來，程式將會自動找尋WiPG-1000裝置。



3) 選擇欲連線的WiPG-1000裝置，並輸入登入碼。



4) 登入成功後，按下投影按鈕  開始投影。



8. 安全資訊

< NCC 警語 >

1. 低功率電波輻射性電機管理辦法

第十二條 經型式認證合格之低功率射頻電機，非經許可，公司、商號或使用者均不得擅自變更頻率、加大功率或變更原設計之特性及功能。

第十四條 低功率射頻電機之使用不得影響飛航安全及干擾合法通信；經發現有干擾現象時，應立即停用，並改善至無干擾時方得繼續使用。

前項合法通信，指依電信法規定作業之無線電通信。低功率射頻電機須忍受合法通信或工業、科學及醫療用電波輻射性電機設備之干擾。

2. 無線資訊傳輸設備必須具備安全功能，以保護未經授權之一方任意更改軟體進而避免發射機操作於非經認證之頻率、輸出功率、調變形式或其他射頻參數設定。

3. 無線資訊傳輸設備避免影響附近雷達系統之操作。

4. MPE 標準值及送測產品實測值(電磁波暴露量 MPE 標準值 $1\text{mW}/\text{cm}^2$ ，送測產品實測值為： $0.02990\text{ mW}/\text{cm}^2$)