

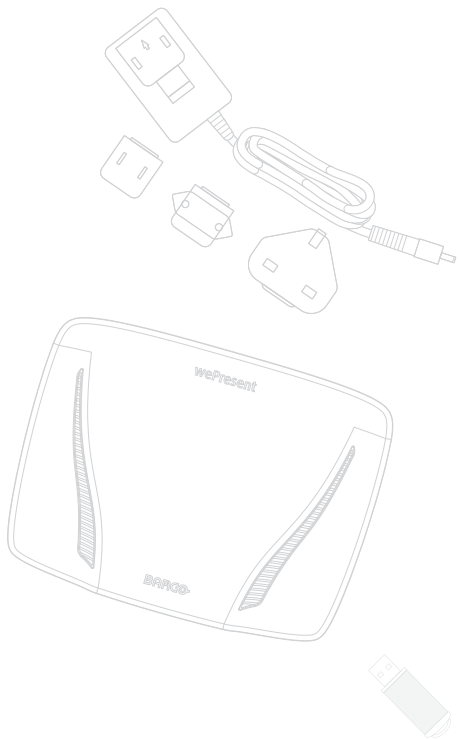


# WiCS-2100

## QUICK INSTALLATION GUIDE

Version: 1.0 | Date: Feb, 2017





## 1. Package Contents

- wePresent WiCS-2100 (Base Unit)
- wePresent USB Token
- Power Adapter (DC +12V, 2A)  
[Manufacturer: Asian Power Devices Inc./Model: WA-24Q12R]
- Wall-Mount Kit
- Quick Installation Guide
- Warranty Card
- CE DoC and Warning Statement

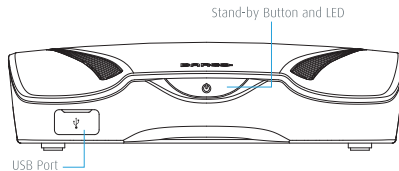
## 2. USB Token Contents

- MirrorOp Installer for Windows
- MirrorOp Installer for Mac
- Executable MirrorOp Application for Windows
- Executable MirrorOp Application for Mac
- VDD Driver (For Windows XP/Vista Virtual Extended Screen)
- SVS Driver (For Mac Extended Screen)
- User Manual (For WiCS-2100)
- User Manual (For MirrorOp)
- Quick Installation Guide

### 3. Physical Details

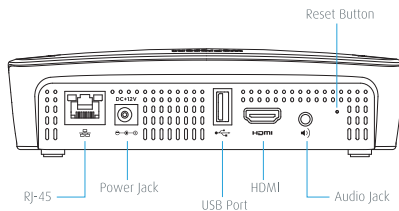
#### • Front

Stand-by Button and LED	Stand-by button: press the button to enter stand-by mode LED indicator: system loading (red), ready (blue)
USB Port (Front)	USB host 2.0 port for USB mouse/keyboard/thumb drive/touch device



#### • Rear

USB Port (Rear)	USB host 2.0 port for USB mouse/keyboard/thumb drive/touch device
RJ-45	10/100/1000M RJ-45 port PoE (Power Over Ethernet)
HDMI	Standard-A, HDMI 1.4b output
Audio Jack	3.5mm phone jack, stereo analog output
Power Jack	DC 12V in
Reset Button	Long press the reset button till the LED turns blinking red



\* The USB port can only supply up to 5V/0.5A to the USB touch device or USB drive.

\* Operation Temperature: "0-40°C"  
\* PoE rating: 42.5-57V --- 0.27-0.23A



The power supply shall comply with the LPS (Limited Power Source) requirements.

## 4. What You Might Need

- Projector/display with HDMI interface
- Windows or Mac computer
- Apple iPhone, iPad or iPod touch
- Android phone or tablet
- Speaker (Optional)
- USB mouse and keyboard (Optional)
- USB HID touch screen/IWB device (Optional)

## 5. Quick Installation

- 1) Connect the wePresent WiCS-2100 to the projector/display through the HDMI port and turn on the projector/display power.
- 2) Connect the power adapter to the WiCS-2100 to turn on the WiCS-2100. The system is ready when the LED light turns blue.
  - The default standby screen as shown on the left will be on display when the system is ready.



- 3) Insert the speaker cable to the WiCS-2100 audio jack for enhanced audio output. (Optional)
- 4) Insert the USB mouse/keyboard/touch device to the WiCS-2100 front/rear USB port for OSD (On-Screen Display) control. (Optional)
- 5) The MirrorOp app for iOS and Android can be downloaded from the iOS App Store or Google Play Store.

## 6. Download the MirrorOp App

- Do Not Support Windows Phone, Windows RT

- 1) Make sure your PC/Mac is WiFi-enabled, and connect your PC/Mac to the wePresent WiCS-2100 through WiFi. You can find the WiFi network name (SSID) of your WiCS-2100 on the start/standby screen of the projector/display. [Default SSID is WiCS-2100-xxx (xxx are the last three digits of the MAC ID shown on the bottom the WiCS-2100)]

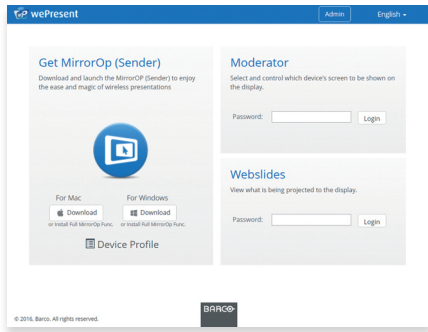




Windows



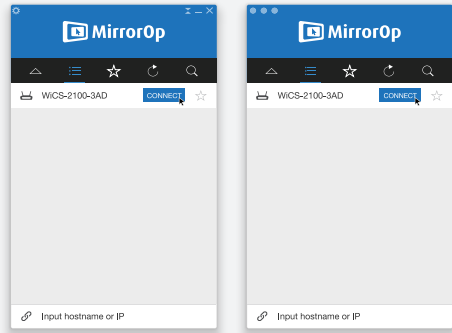
Mac

- 2) Open your browser, and enter the IP address or the device host name in the address bar of the browser. You can find the IP address and host name on the standby screen of the projector/display. [Default IP address is 192.168.100.10; default host name is WiCS-2100-xxx (xxx are the last three digits of the MAC ID shown on the bottom the WiCS-2100)]



- 3) Click  [Download](#) or  [Download](#) to download the "MirrorOp (Sender)" app for "Mac" (10.9 and above) or "Windows" (Win 7/8/10). [If you want to install the full version of the MirrorOp app, click "Install Full MirrorOp Func." or install it from the USB token directly.] Make sure the software is not blocked by your firewall.

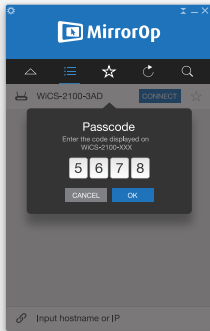
## 7. Start the MirrorOp App



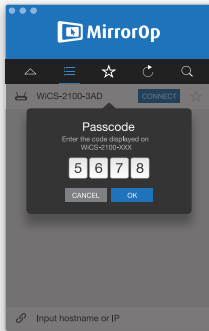
Windows

Mac


- 1) After downloading the MirrorOp app, you will see the user interface of MirrorOp as above.

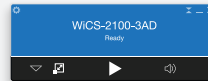


Windows

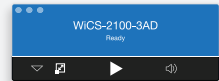


Mac


2) The MirrorOp app will automatically locate the WICS-2100. (If not, you can click  or input the hostname/IP in the text box to connect to the device.) Enter the passcode shown on the display.



Windows



Mac

3) Click  and start sharing your screen.



MANUFACTURER: BARCO NV  
ADD: PRESIDENT KENNEDYPARK 35, 8500 KORTRIJK, BELGIUM  
TEL: +32 56 233211

IMPORTER: BARCO NV  
ADD: PRESIDENT KENNEDYPARK 35, 8500 KORTRIJK, BELGIUM  
TEL: +32 56 233211

